

Data Path : Z:\voasrv\HPCHEM1\MSVOA_X\Data\VX120825\
 Data File : VX048752.D
 Acq On : 08 Dec 2025 14:16
 Operator : JC/MD
 Sample : Q3787-07
 Misc : 5.0mL/MSVOA_X/WATER
 ALS Vial : 12 Sample Multiplier: 1

Instrument :
 MSVOA_X
 ClientSampleId :
 OWBR-02-170-120425

Quant Time: Dec 09 04:10:34 2025
 Quant Method : Z:\voasrv\HPCHEM1\MSVOA_X\Method\82X120425W.M
 Quant Title : SW846 8260
 QLast Update : Fri Dec 05 03:27:34 2025
 Response via : Initial Calibration

Compound	R.T.	QIon	Response	Conc	Units	Dev(Min)

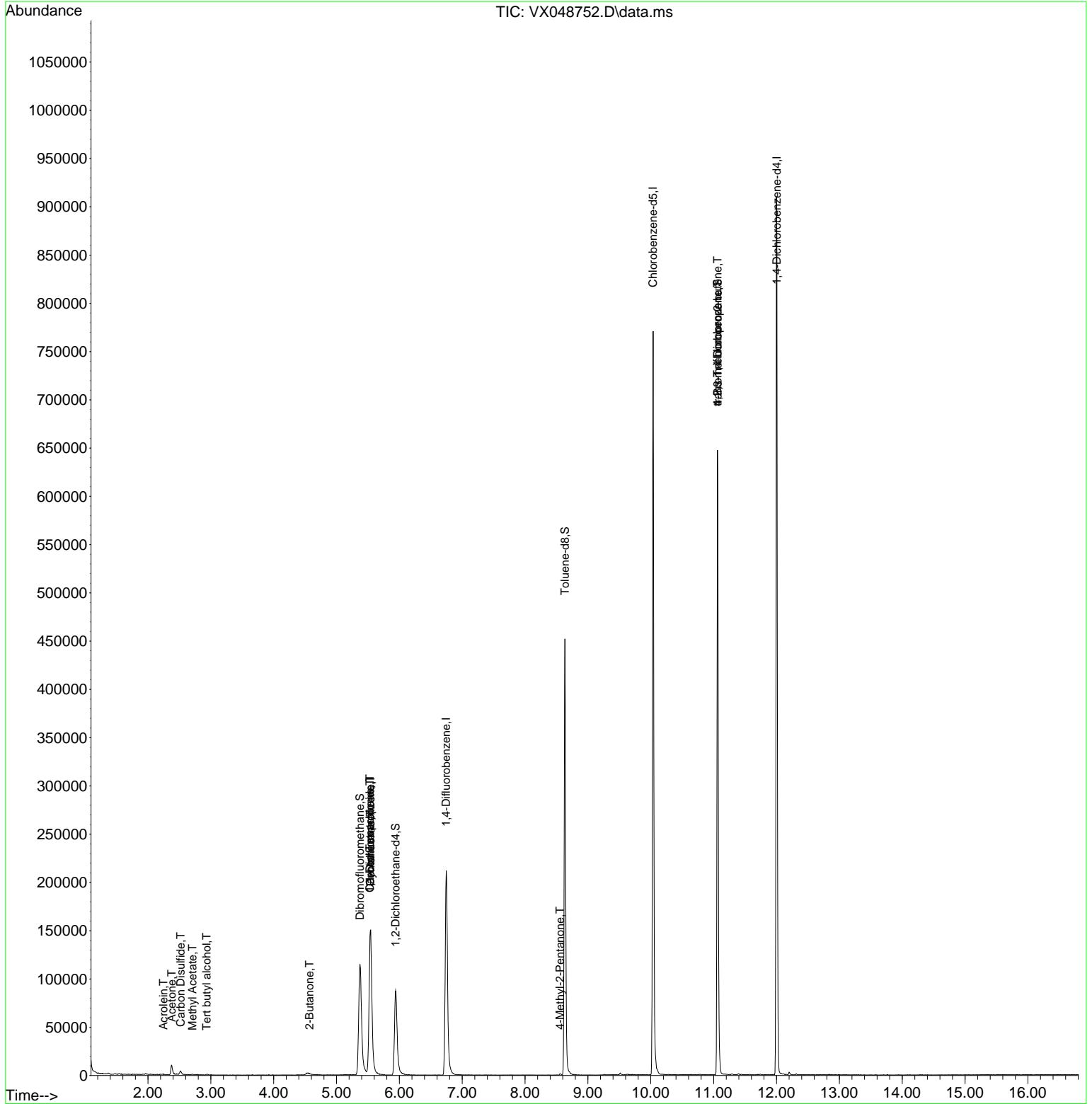
Internal Standards						
1) Pentafluorobenzene	5.544	168	152251	50.000	ug/l	0.00
34) 1,4-Difluorobenzene	6.745	114	235496	50.000	ug/l	0.00
63) Chlorobenzene-d5	10.037	117	353865	50.000	ug/l	0.00
72) 1,4-Dichlorobenzene-d4	12.006	152	191518	50.000	ug/l	0.00
System Monitoring Compounds						
33) 1,2-Dichloroethane-d4	5.940	65	94036	46.017	ug/l	0.00
Spiked Amount	50.000	Range 78 - 117	Recovery	=	92.040%	
35) Dibromofluoromethane	5.373	113	115004	70.925	ug/l	0.00
Spiked Amount	50.000	Range 75 - 124	Recovery	=	141.860%#	
50) Toluene-d8	8.635	98	277928	48.898	ug/l	0.00
Spiked Amount	50.000	Range 92 - 112	Recovery	=	97.800%	
62) 4-Bromofluorobenzene	11.061	95	181933	92.825	ug/l	0.00
Spiked Amount	50.000	Range 83 - 123	Recovery	=	185.660%#	
Target Compounds						
						Qvalue
11) Tert butyl alcohol	2.934	59	206	0.624	ug/l #	73
13) Acrolein	2.245	56	19	40.227	ug/l #	1
16) Acetone	2.380	43	13237	16.921	ug/l	98
17) Carbon Disulfide	2.520	76	1258	0.245	ug/l #	74
18) Methyl Acetate	2.709	43	1063	0.483	ug/l #	57
25) 2-Butanone	4.568	43	1538	1.332	ug/l #	83
31) Cyclohexane	5.538	56	3363	1.218	ug/l #	1
36) 1,1-Dichloropropene	5.531	75	12922	5.818	ug/l #	48
38) Carbon Tetrachloride	5.531	117	16385	6.513	ug/l #	15
51) 4-Methyl-2-Pentanone	8.555	43	1115	0.447	ug/l #	83
76) 1,2,3-Trichloropropane	11.061	75	95901	26.885	ug/l #	30
81) trans-1,4-Dichloro-2-b...	11.061	75	95901	63.863	ug/l #	3
95) Naphthalene	13.768	128	203	Below Cal	#	69

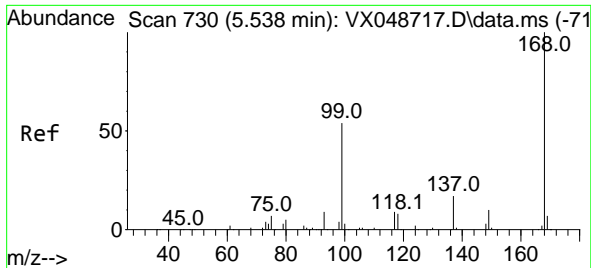
(#) = qualifier out of range (m) = manual integration (+) = signals summed

Data Path : Z:\voasrv\HPCHEM1\MSVOA_X\Data\VX120825\
 Data File : VX048752.D
 Acq On : 08 Dec 2025 14:16
 Operator : JC/MD
 Sample : Q3787-07
 Misc : 5.0mL/MSVOA_X/WATER
 ALS Vial : 12 Sample Multiplier: 1

Instrument :
 MSVOA_X
 ClientSampleId :
 OWBR-02-170-120425

Quant Time: Dec 09 04:10:34 2025
 Quant Method : Z:\voasrv\HPCHEM1\MSVOA_X\Method\82X120425W.M
 Quant Title : SW846 8260
 QLast Update : Fri Dec 05 03:27:34 2025
 Response via : Initial Calibration

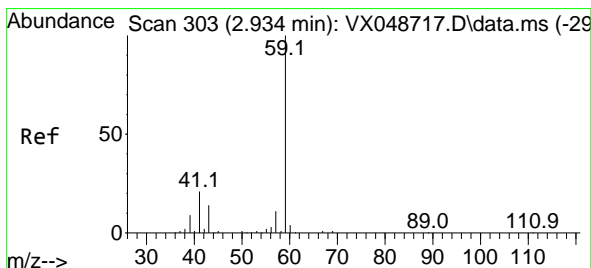
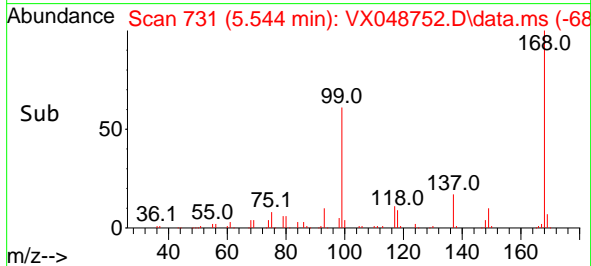
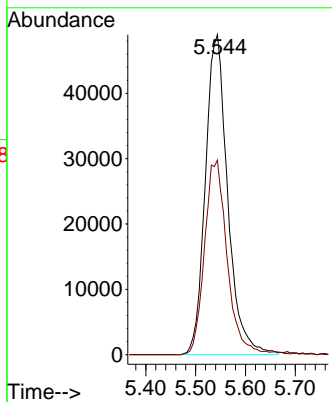
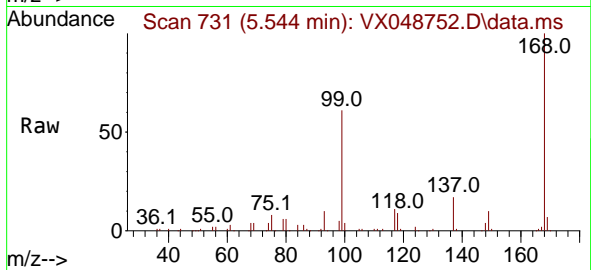




#1
 Pentafluorobenzene
 Concen: 50.000 ug/l
 RT: 5.544 min Scan# 71
 Delta R.T. 0.006 min
 Lab File: VX048752.D
 Acq: 08 Dec 2025 14:16

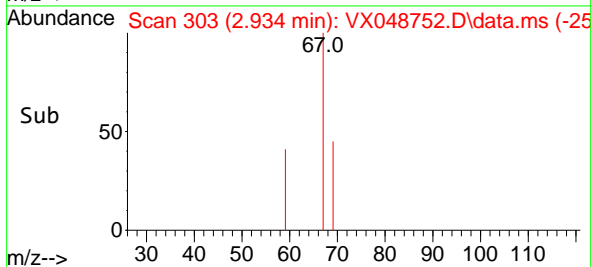
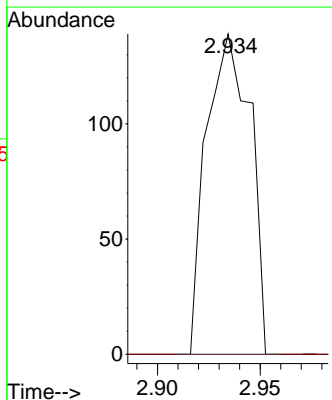
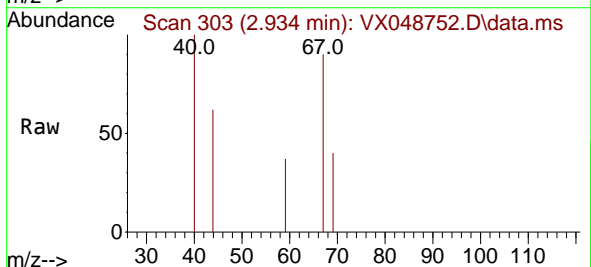
Instrument : MSVOA_X
 ClientSampleId : OWBR-02-170-120425

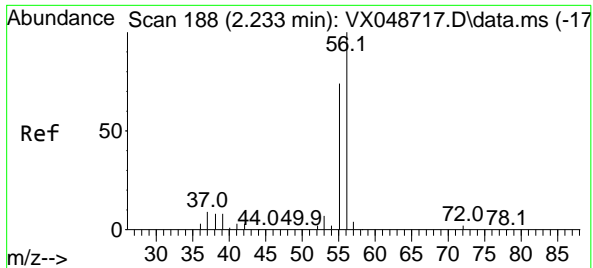
Tgt Ion:168 Resp: 152251
 Ion Ratio Lower Upper
 168 100
 99 60.8 44.2 66.4



#11
 Tert butyl alcohol
 Concen: 0.624 ug/l
 RT: 2.934 min Scan# 303
 Delta R.T. -0.000 min
 Lab File: VX048752.D
 Acq: 08 Dec 2025 14:16

Tgt Ion: 59 Resp: 206
 Ion Ratio Lower Upper
 59 100
 57 0.0 8.1 12.1#

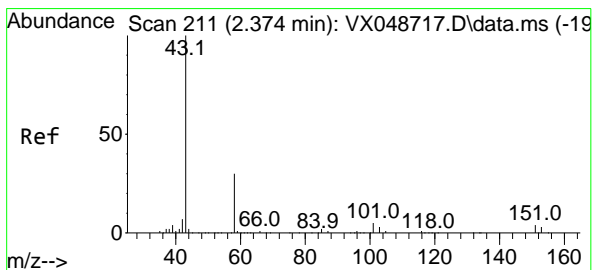
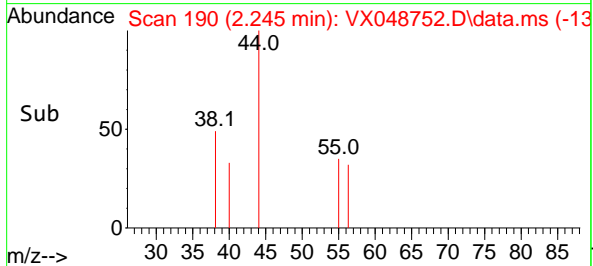
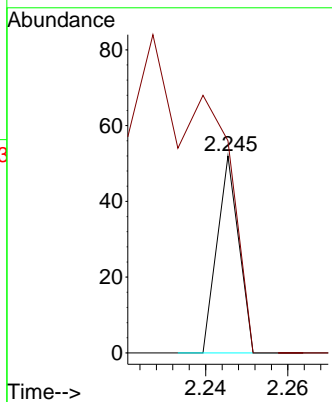
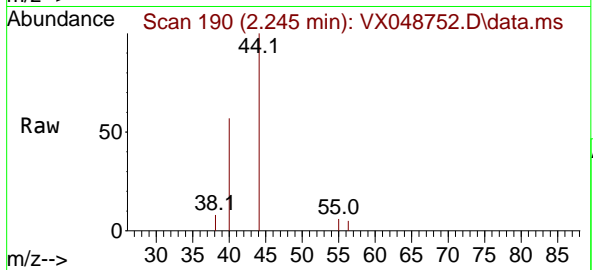




#13
 Acrolein
 Concen: 40.227 ug/l
 RT: 2.245 min Scan# 19
 Delta R.T. 0.012 min
 Lab File: VX048752.D
 Acq: 08 Dec 2025 14:16

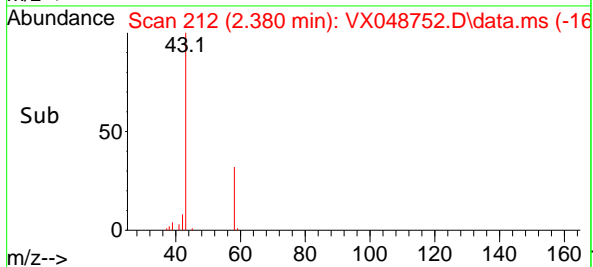
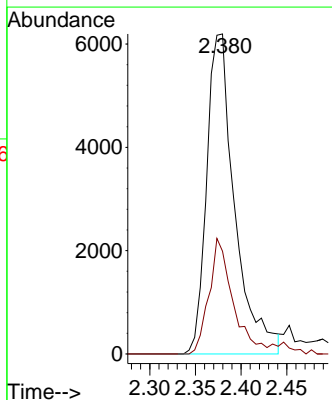
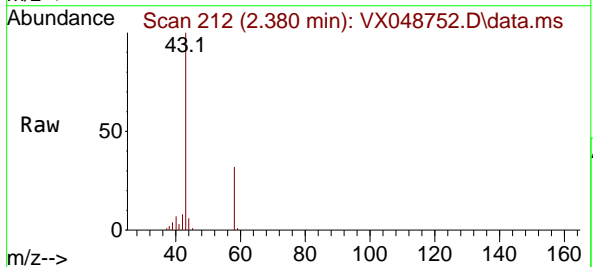
Instrument : MSVOA_X
 ClientSampleId : OWBR-02-170-120425

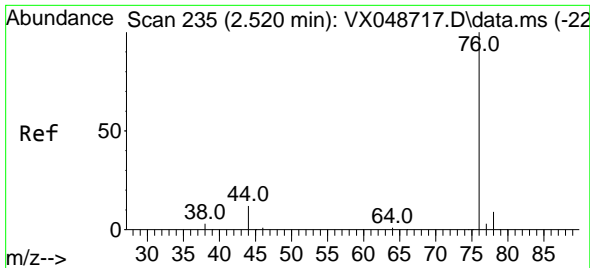
Tgt Ion: 56 Resp: 19
 Ion Ratio Lower Upper
 56 100
 55 615.8 55.8 83.6#



#16
 Acetone
 Concen: 16.921 ug/l
 RT: 2.380 min Scan# 212
 Delta R.T. 0.006 min
 Lab File: VX048752.D
 Acq: 08 Dec 2025 14:16

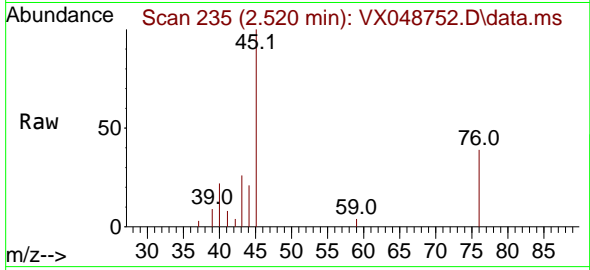
Tgt Ion: 43 Resp: 13237
 Ion Ratio Lower Upper
 43 100
 58 32.1 25.0 37.4



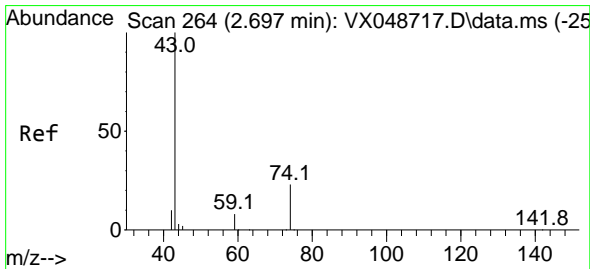
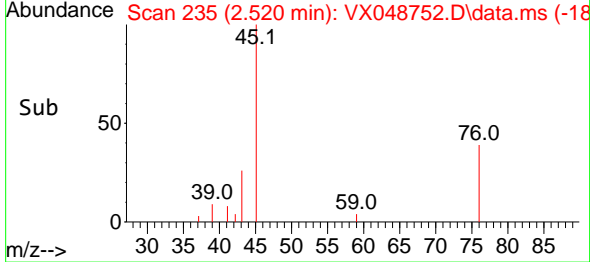
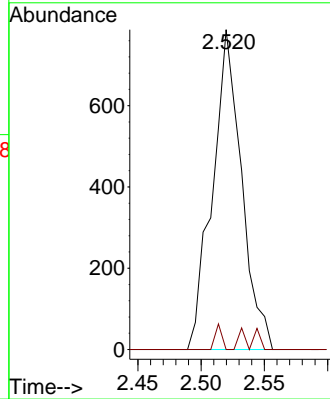


#17
 Carbon Disulfide
 Concen: 0.245 ug/l
 RT: 2.520 min Scan# 211
 Delta R.T. -0.000 min
 Lab File: VX048752.D
 Acq: 08 Dec 2025 14:16

Instrument : MSVOA_X
 ClientSampleId : OWBR-02-170-120425

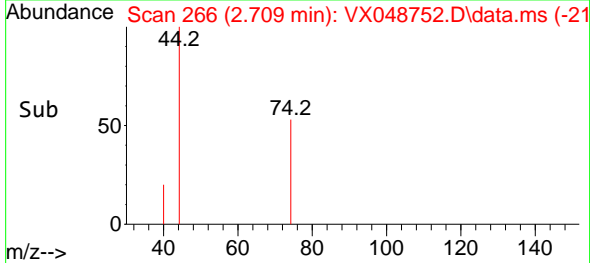
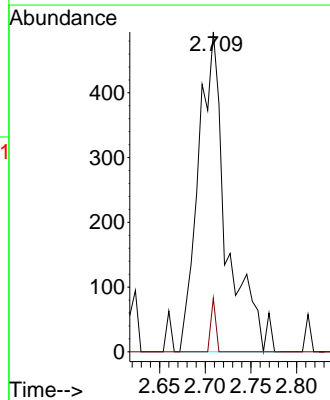
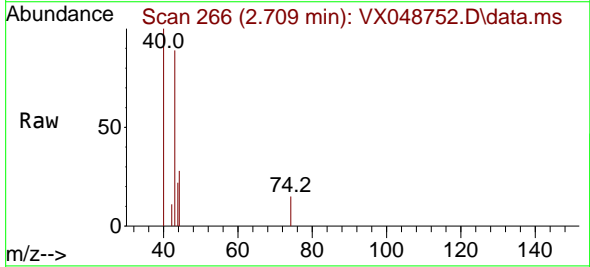


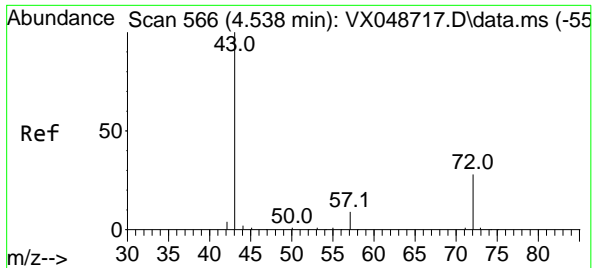
Tgt Ion: 76 Resp: 1258
 Ion Ratio Lower Upper
 76 100
 78 0.0 7.4 11.2#



#18
 Methyl Acetate
 Concen: 0.483 ug/l
 RT: 2.709 min Scan# 266
 Delta R.T. 0.012 min
 Lab File: VX048752.D
 Acq: 08 Dec 2025 14:16

Tgt Ion: 43 Resp: 1063
 Ion Ratio Lower Upper
 43 100
 74 2.8 19.2 28.8#

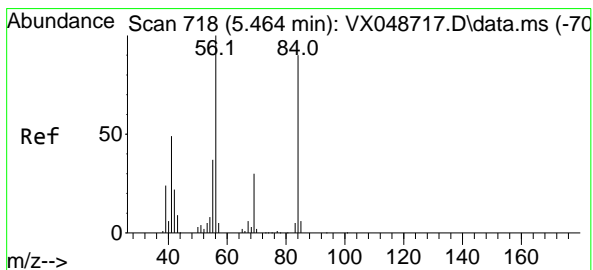
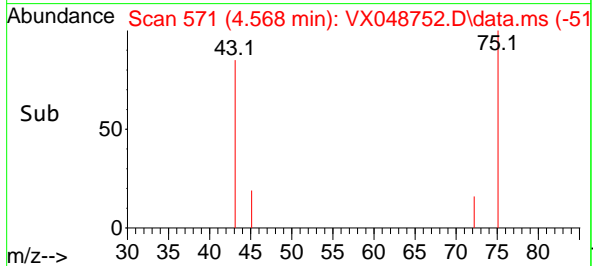
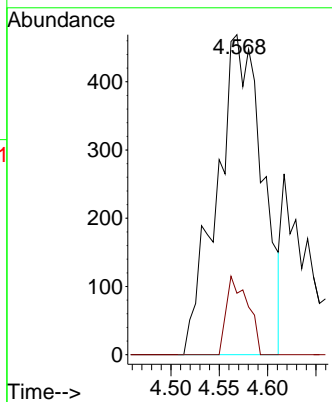
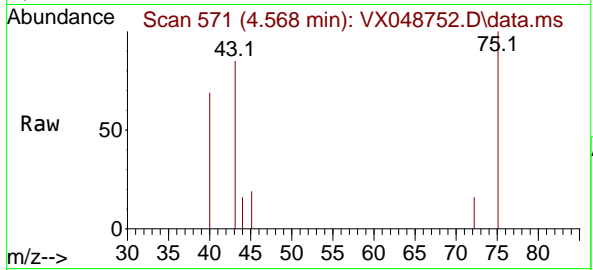




#25
 2-Butanone
 Concen: 1.332 ug/l
 RT: 4.568 min Scan# 51
 Delta R.T. 0.030 min
 Lab File: VX048752.D
 Acq: 08 Dec 2025 14:16

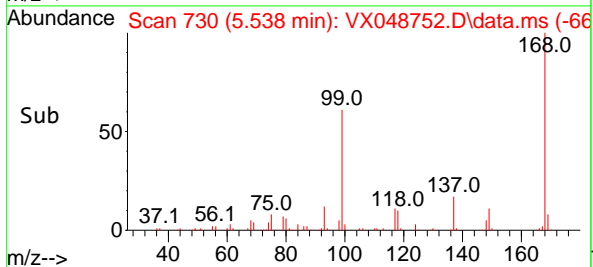
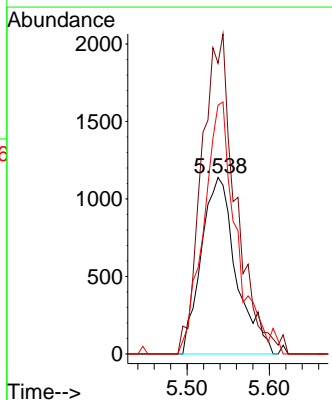
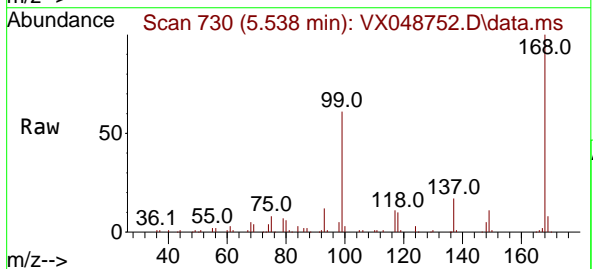
Instrument : MSVOA_X
 ClientSampleId : OWBR-02-170-120425

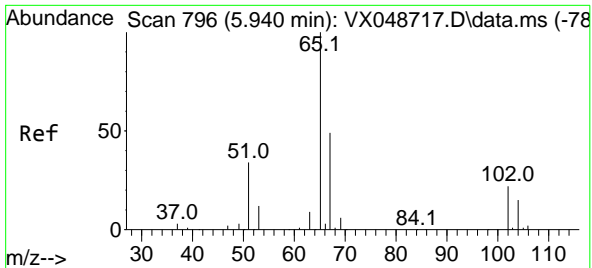
Tgt Ion: 43 Resp: 1538
 Ion Ratio Lower Upper
 43 100
 72 19.2 22.6 34.0#



#31
 Cyclohexane
 Concen: 1.218 ug/l
 RT: 5.538 min Scan# 730
 Delta R.T. 0.073 min
 Lab File: VX048752.D
 Acq: 08 Dec 2025 14:16

Tgt Ion: 56 Resp: 3363
 Ion Ratio Lower Upper
 56 100
 69 164.7 24.2 36.2#
 84 141.0 72.1 108.1#

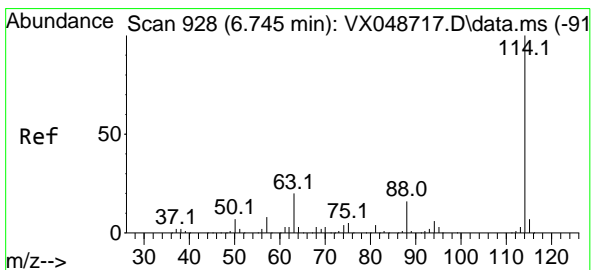
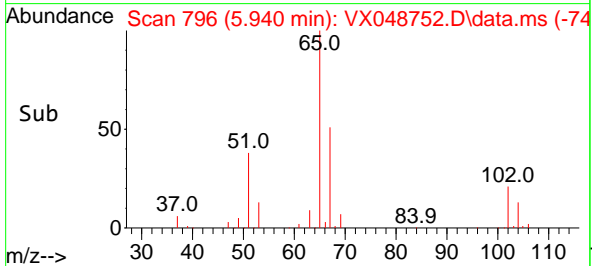
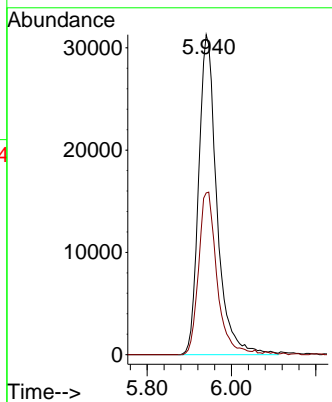
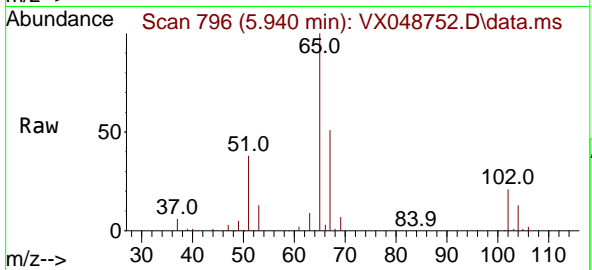




#33
 1,2-Dichloroethane-d4
 Concen: 46.017 ug/l
 RT: 5.940 min Scan# 796
 Delta R.T. -0.000 min
 Lab File: VX048752.D
 Acq: 08 Dec 2025 14:16

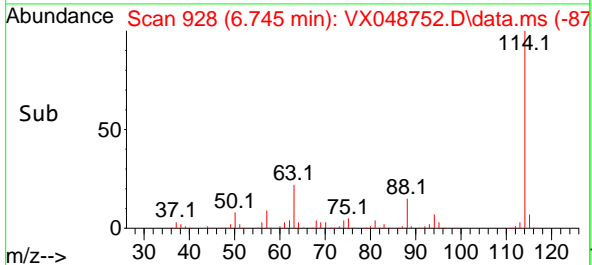
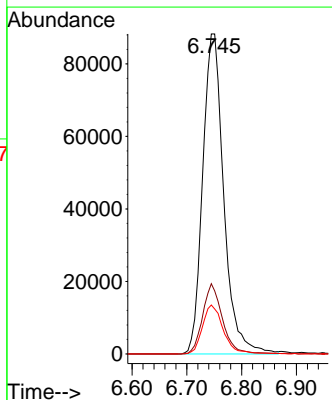
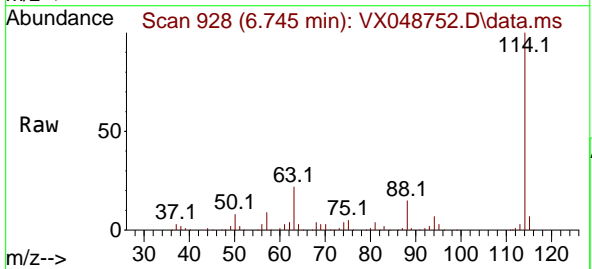
Instrument : MSVOA_X
 ClientSampleId : OWBR-02-170-120425

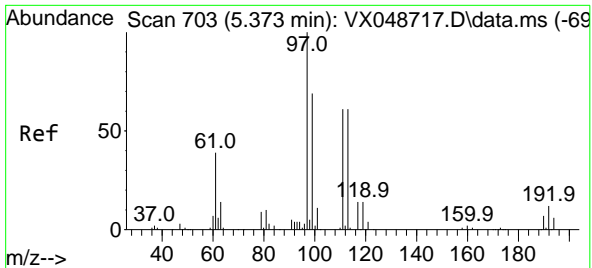
Tgt Ion: 65 Resp: 94036
 Ion Ratio Lower Upper
 65 100
 67 51.5 0.0 107.4



#34
 1,4-Difluorobenzene
 Concen: 50.000 ug/l
 RT: 6.745 min Scan# 928
 Delta R.T. -0.000 min
 Lab File: VX048752.D
 Acq: 08 Dec 2025 14:16

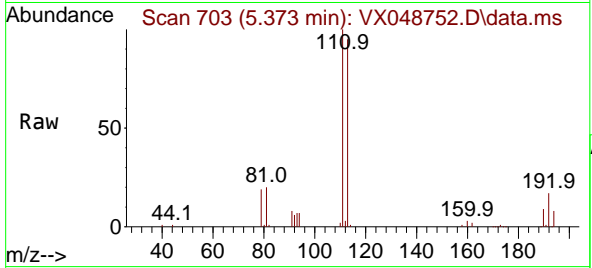
Tgt Ion: 114 Resp: 235496
 Ion Ratio Lower Upper
 114 100
 63 22.0 0.0 39.0
 88 15.3 0.0 31.8





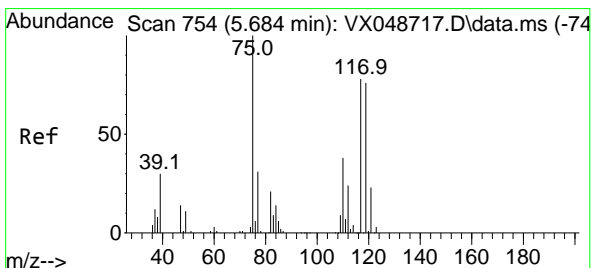
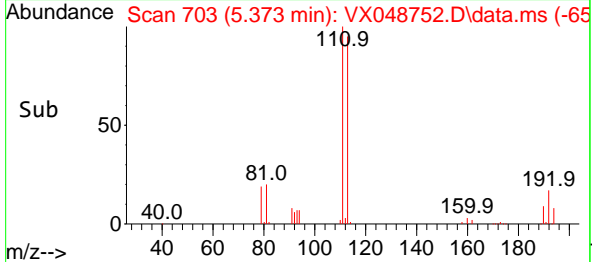
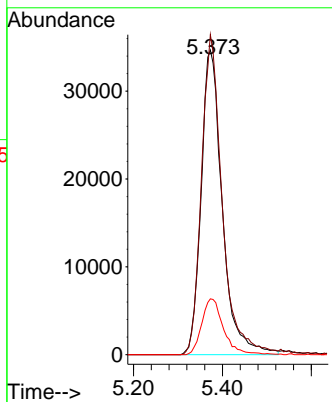
#35
 Dibromofluoromethane
 Concen: 70.925 ug/l
 RT: 5.373 min Scan# 703
 Delta R.T. -0.000 min
 Lab File: VX048752.D
 Acq: 08 Dec 2025 14:16

Instrument : MSVOA_X
 ClientSampleId : OWBR-02-170-120425



Tgt Ion: 113 Resp: 115004

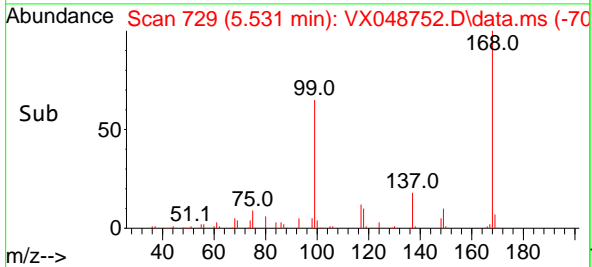
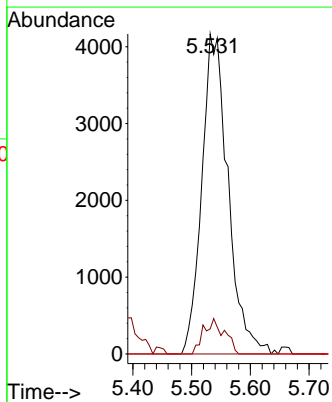
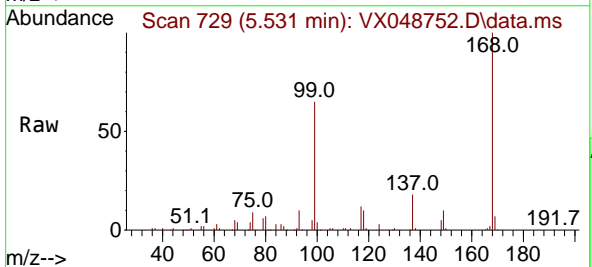
Ion	Ratio	Lower	Upper
113	100		
111	103.6	79.5	119.3
192	18.7	16.1	24.1

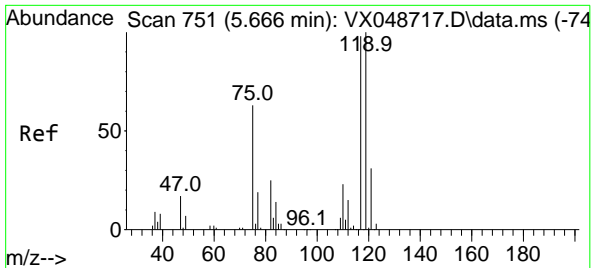


#36
 1,1-Dichloropropene
 Concen: 5.818 ug/l
 RT: 5.531 min Scan# 729
 Delta R.T. -0.152 min
 Lab File: VX048752.D
 Acq: 08 Dec 2025 14:16

Tgt Ion: 75 Resp: 12922

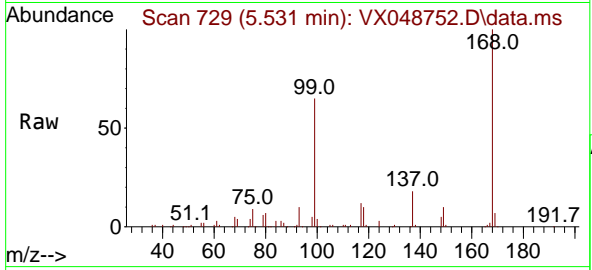
Ion	Ratio	Lower	Upper
75	100		
110	8.8	18.6	55.8#
77	0.0	25.3	37.9#



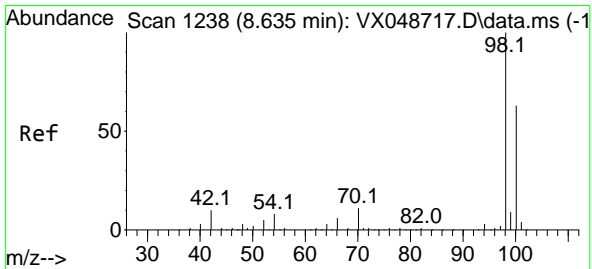
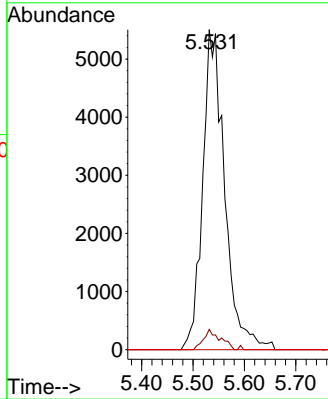
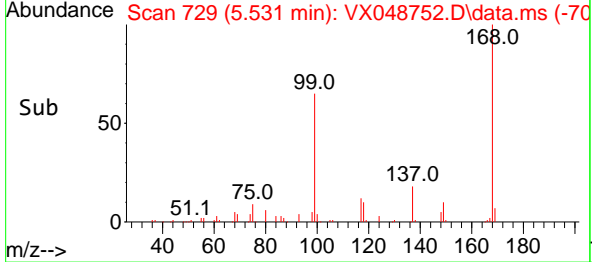


#38
 Carbon Tetrachloride
 Concen: 6.513 ug/l
 RT: 5.531 min Scan# 71
 Delta R.T. -0.134 min
 Lab File: VX048752.D
 Acq: 08 Dec 2025 14:16

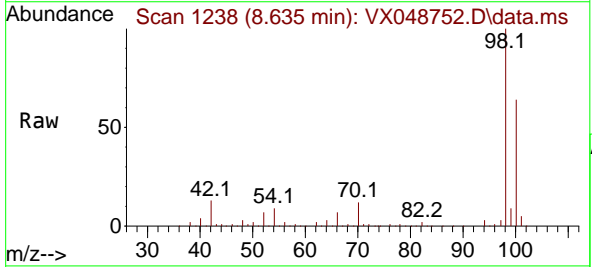
Instrument : MSVOA_X
 ClientSampleId : OWBR-02-170-120425



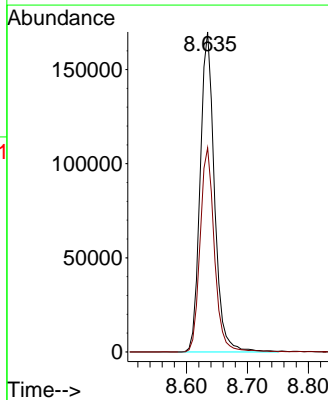
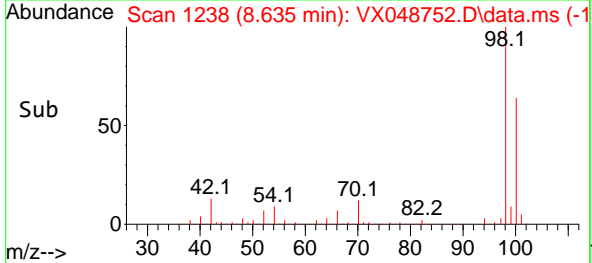
Tgt Ion: 117 Resp: 16385
 Ion Ratio Lower Upper
 117 100
 119 6.4 80.5 120.7#
 121 0.0 25.4 38.0#

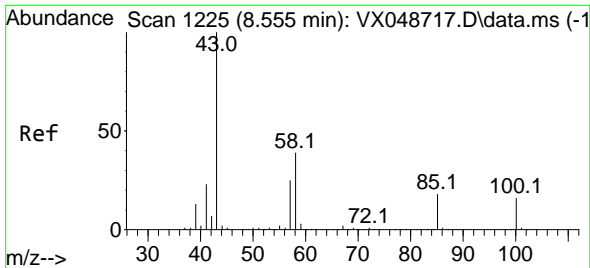


#50
 Toluene-d8
 Concen: 48.898 ug/l
 RT: 8.635 min Scan# 1238
 Delta R.T. -0.000 min
 Lab File: VX048752.D
 Acq: 08 Dec 2025 14:16



Tgt Ion: 98 Resp: 277928
 Ion Ratio Lower Upper
 98 100
 100 63.8 53.4 80.0

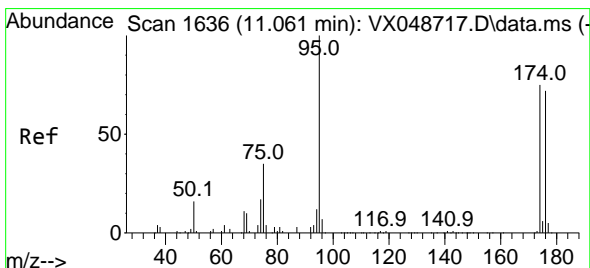
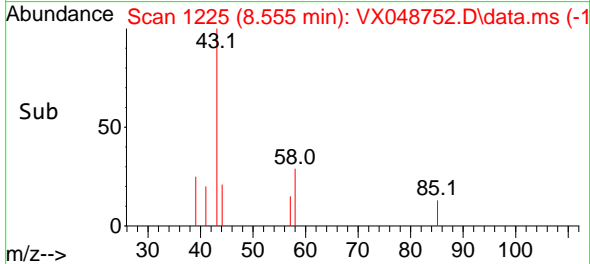
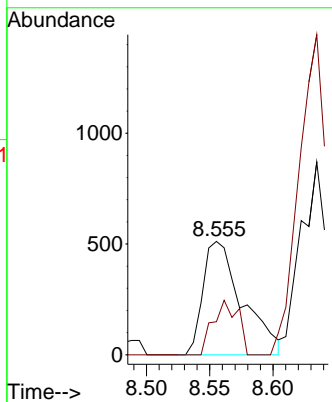
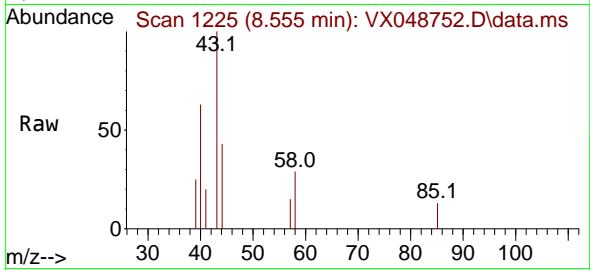




#51
 4-Methyl-2-Pentanone
 Concen: 0.447 ug/l
 RT: 8.555 min Scan# 1115
 Delta R.T. -0.000 min
 Lab File: VX048752.D
 Acq: 08 Dec 2025 14:16

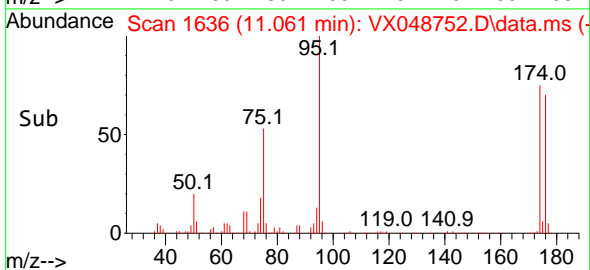
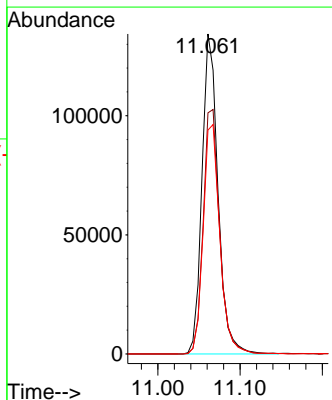
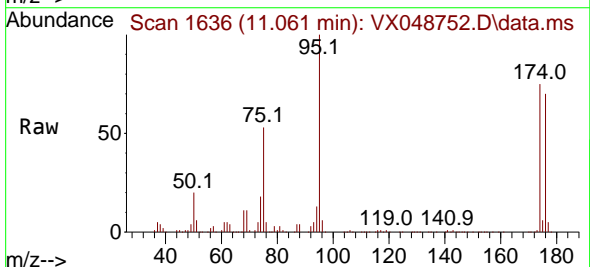
Instrument : MSVOA_X
 ClientSampleId : OWBR-02-170-120425

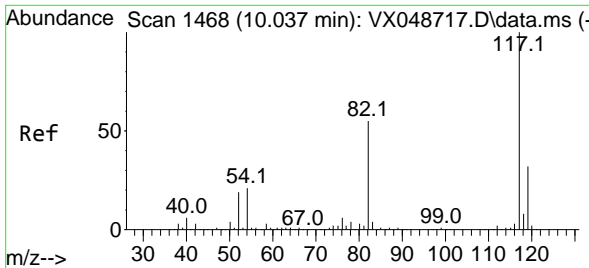
Tgt Ion: 43 Resp: 1115
 Ion Ratio Lower Upper
 43 100
 58 30.0 32.2 48.4#



#62
 4-Bromofluorobenzene
 Concen: 92.825 ug/l
 RT: 11.061 min Scan# 1636
 Delta R.T. -0.000 min
 Lab File: VX048752.D
 Acq: 08 Dec 2025 14:16

Tgt Ion: 95 Resp: 181933
 Ion Ratio Lower Upper
 95 100
 174 78.6 0.0 157.8
 176 74.9 0.0 154.0



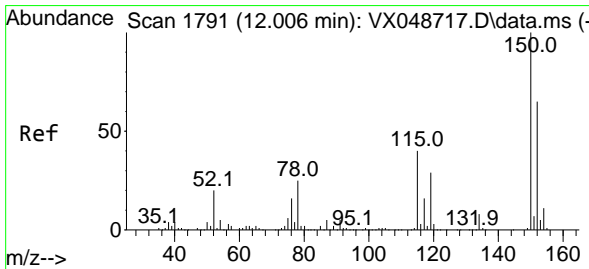
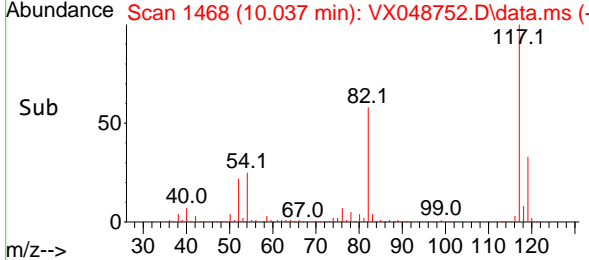
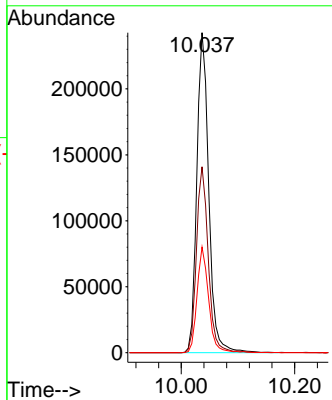
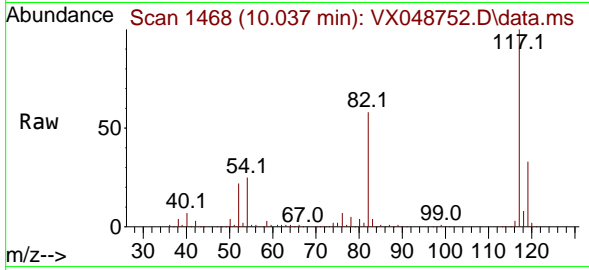


#63
 Chlorobenzene-d5
 Concen: 50.000 ug/l
 RT: 10.037 min Scan# 14
 Delta R.T. -0.000 min
 Lab File: VX048752.D
 Acq: 08 Dec 2025 14:16

Instrument :
 MSVOA_X
ClientSampleId :
 OWBR-02-170-120425

Tgt Ion:117 Resp: 353865

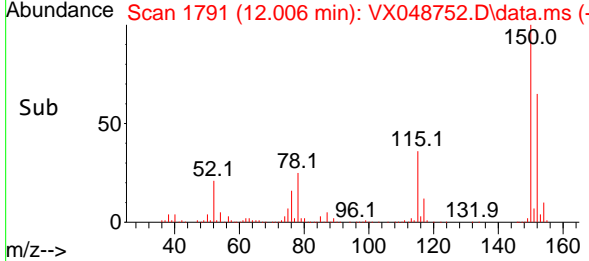
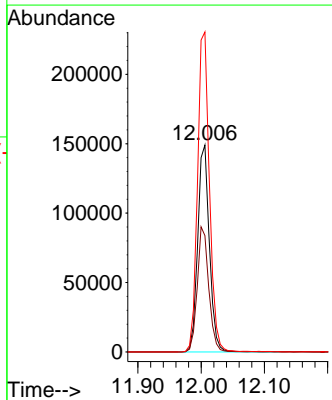
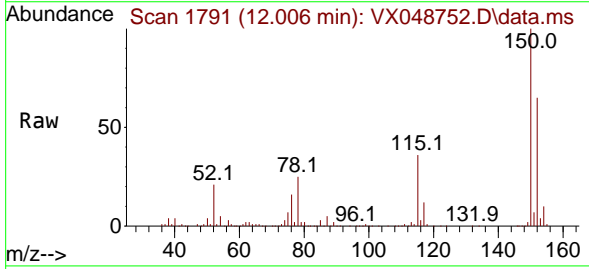
Ion	Ratio	Lower	Upper
117	100		
82	58.1	44.1	66.1
119	33.0	25.2	37.8

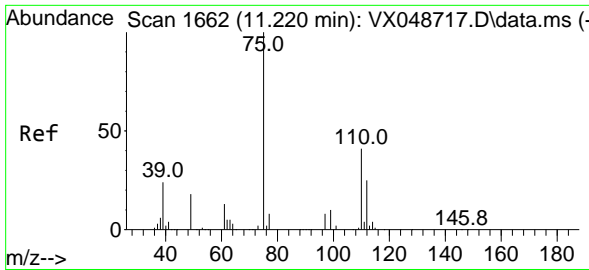


#72
 1,4-Dichlorobenzene-d4
 Concen: 50.000 ug/l
 RT: 12.006 min Scan# 1791
 Delta R.T. -0.000 min
 Lab File: VX048752.D
 Acq: 08 Dec 2025 14:16

Tgt Ion:152 Resp: 191518

Ion	Ratio	Lower	Upper
152	100		
115	59.6	42.1	126.4
150	157.4	0.0	347.8

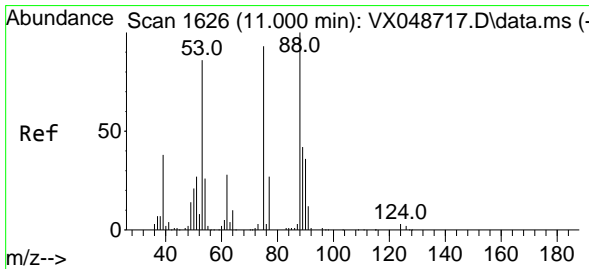
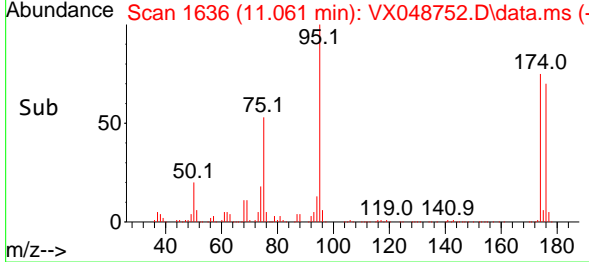
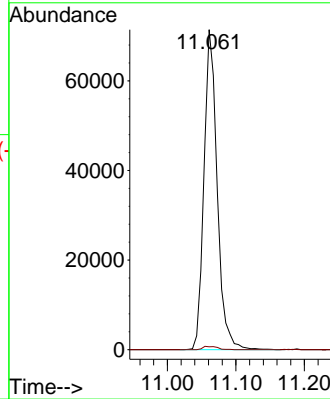
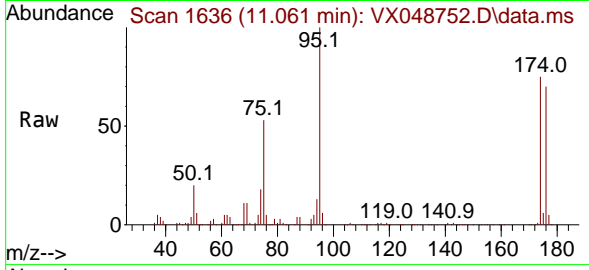




#76
 1,2,3-Trichloropropane
 Concen: 26.885 ug/l
 RT: 11.061 min Scan# 1636
 Delta R.T. -0.159 min
 Lab File: VX048752.D
 Acq: 08 Dec 2025 14:16

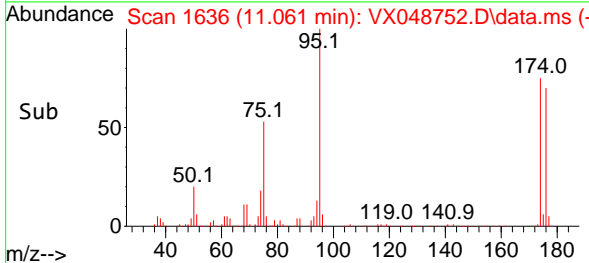
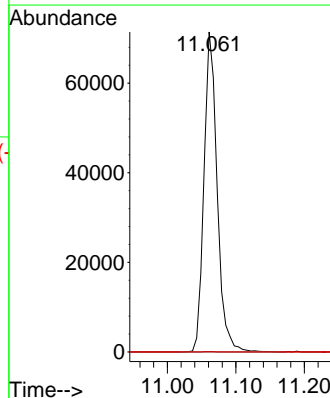
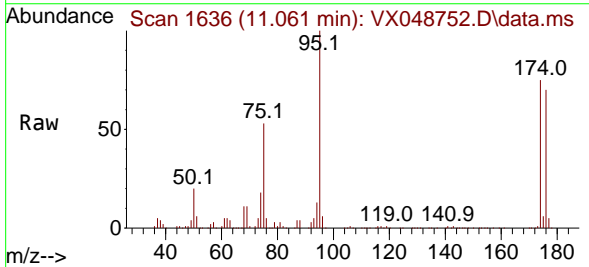
Instrument : MSVOA_X
 ClientSampleId : OWBR-02-170-120425

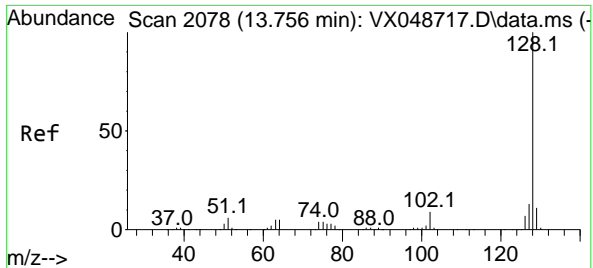
Tgt Ion: 75 Resp: 95901
 Ion Ratio Lower Upper
 75 100
 77 1.1 24.3 73.0#



#81
 trans-1,4-Dichloro-2-butene
 Concen: 63.863 ug/l
 RT: 11.061 min Scan# 1636
 Delta R.T. 0.061 min
 Lab File: VX048752.D
 Acq: 08 Dec 2025 14:16

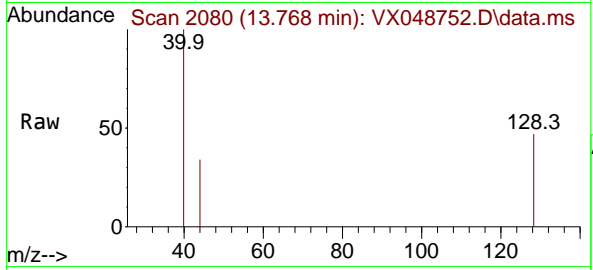
Tgt Ion: 75 Resp: 95901
 Ion Ratio Lower Upper
 75 100
 53 0.1 79.9 119.9#
 89 0.0 67.1 100.7#





#95
 Naphthalene
 Concen: Below Cal
 RT: 13.768 min Scan# 20
 Delta R.T. 0.012 min
 Lab File: VX048752.D
 Acq: 08 Dec 2025 14:16

Instrument : MSVOA_X
 ClientSampleId : OWBR-02-170-120425



Tgt Ion:128 Resp: 203

Ion	Ratio	Lower	Upper
128	100		
127	0.0	10.2	15.2#
129	0.0	8.6	13.0#

