

Data Path : Z:\voasrv\HPCHEM1\MSVOA_X\Data\VX120825\
 Data File : VX048753.D
 Acq On : 08 Dec 2025 14:36
 Operator : JC/MD
 Sample : Q3787-09
 Misc : 5.0mL/MSVOA_X/WATER
 ALS Vial : 13 Sample Multiplier: 1

Instrument :
 MSVOA_X
 ClientSampleId :
 OWBR-02-170-120425-FD

Quant Time: Dec 09 04:10:56 2025
 Quant Method : Z:\voasrv\HPCHEM1\MSVOA_X\Method\82X120425W.M
 Quant Title : SW846 8260
 QLast Update : Fri Dec 05 03:27:34 2025
 Response via : Initial Calibration

Compound	R.T.	QIon	Response	Conc	Units	Dev(Min)

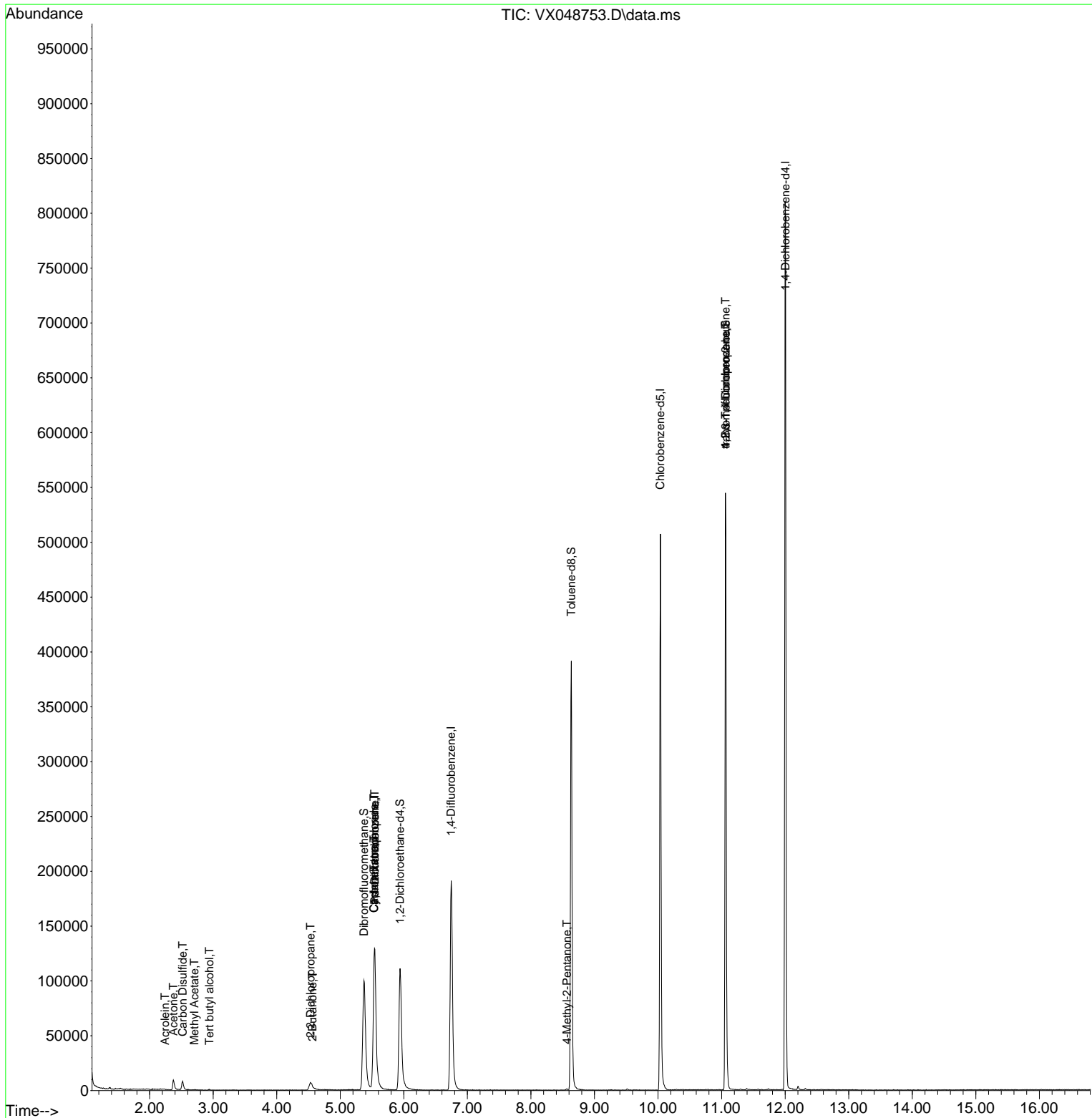
Internal Standards						
1) Pentafluorobenzene	5.543	168	129874	50.000	ug/l	0.00
34) 1,4-Difluorobenzene	6.744	114	212277	50.000	ug/l	0.00
63) Chlorobenzene-d5	10.036	117	232388	50.000	ug/l	0.00
72) 1,4-Dichlorobenzene-d4	12.006	152	176527	50.000	ug/l	0.00
System Monitoring Compounds						
33) 1,2-Dichloroethane-d4	5.940	65	123816	71.030	ug/l	0.00
Spiked Amount	50.000	Range 78 - 117	Recovery	=	142.060%#	
35) Dibromofluoromethane	5.373	113	97967	67.027	ug/l	0.00
Spiked Amount	50.000	Range 75 - 124	Recovery	=	134.060%#	
50) Toluene-d8	8.634	98	243890	47.603	ug/l	0.00
Spiked Amount	50.000	Range 92 - 112	Recovery	=	95.200%	
62) 4-Bromofluorobenzene	11.061	95	151305	85.642	ug/l	0.00
Spiked Amount	50.000	Range 83 - 123	Recovery	=	171.280%#	
Target Compounds						
						Qvalue
11) Tert butyl alcohol	2.940	59	80	0.284	ug/l #	73
13) Acrolein	2.239	56	46	40.319	ug/l #	15
16) Acetone	2.373	43	12145	18.200	ug/l #	84
17) Carbon Disulfide	2.519	76	891	0.203	ug/l #	74
18) Methyl Acetate	2.702	43	620	0.330	ug/l #	51
25) 2-Butanone	4.562	43	1956	1.986	ug/l #	84
26) 2,2-Dichloropropane	4.531	77	671	0.287	ug/l #	52
31) Cyclohexane	5.531	56	3027	1.285	ug/l #	13
36) 1,1-Dichloropropene	5.543	75	11047	5.518	ug/l #	48
38) Carbon Tetrachloride	5.531	117	13496	5.952	ug/l #	13
51) 4-Methyl-2-Pentanone	8.567	43	858	0.382	ug/l #	68
76) 1,2,3-Trichloropropane	11.061	75	80494	24.482	ug/l #	30
81) trans-1,4-Dichloro-2-b...	11.061	75	80494	58.155	ug/l #	3
95) Naphthalene	13.774	128	92	Below Cal	#	69

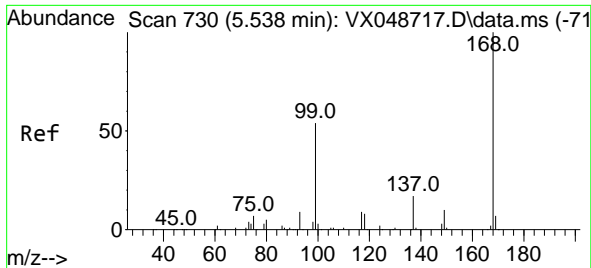
(#) = qualifier out of range (m) = manual integration (+) = signals summed

Data Path : Z:\voasrv\HPCHEM1\MSVOA_X\Data\VX120825\
 Data File : VX048753.D
 Acq On : 08 Dec 2025 14:36
 Operator : JC/MD
 Sample : Q3787-09
 Misc : 5.0mL/MSVOA_X/WATER
 ALS Vial : 13 Sample Multiplier: 1

Instrument :
 MSVOA_X
 ClientSampleId :
 OWBR-02-170-120425-FD

Quant Time: Dec 09 04:10:56 2025
 Quant Method : Z:\voasrv\HPCHEM1\MSVOA_X\Method\82X120425W.M
 Quant Title : SW846 8260
 QLast Update : Fri Dec 05 03:27:34 2025
 Response via : Initial Calibration

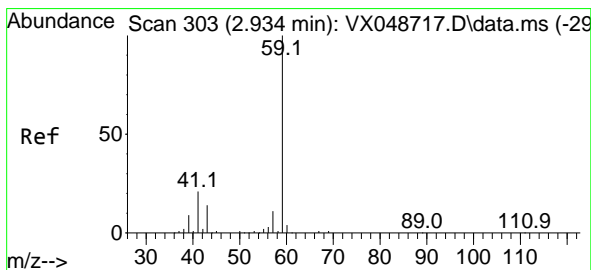
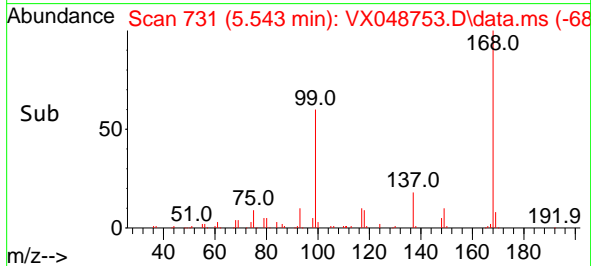
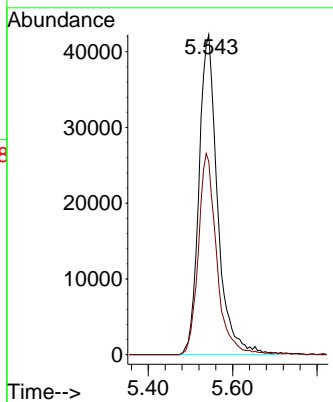
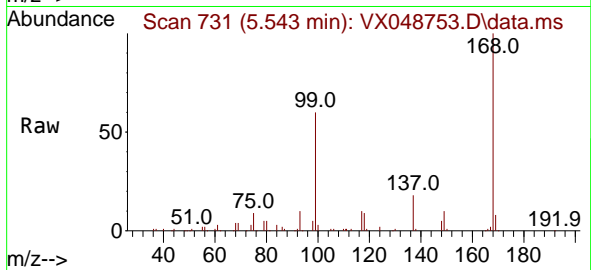




#1
 Pentafluorobenzene
 Concen: 50.000 ug/l
 RT: 5.543 min Scan# 71
 Delta R.T. 0.005 min
 Lab File: VX048753.D
 Acq: 08 Dec 2025 14:36

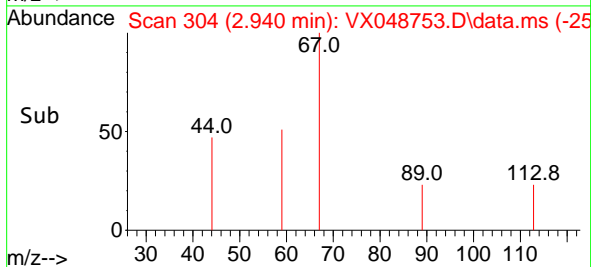
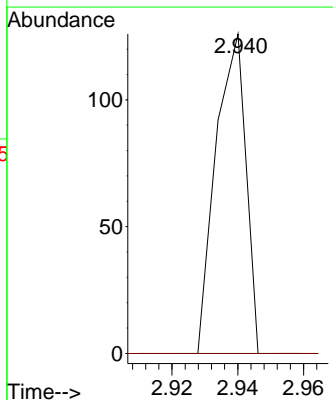
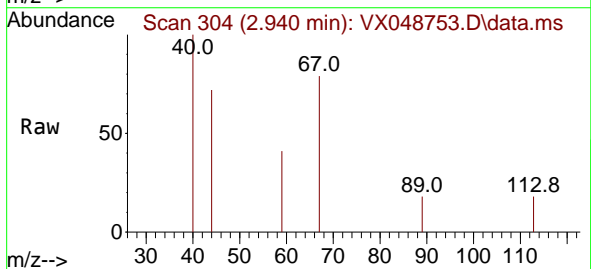
Instrument : MSVOA_X
 ClientSampleId : OWBR-02-170-120425-FD

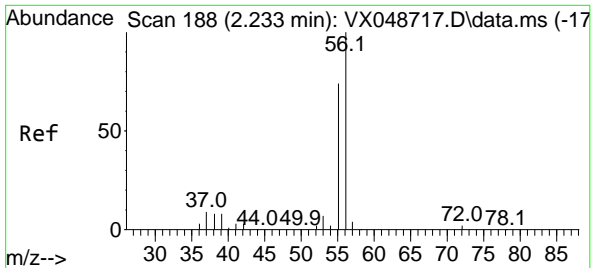
Tgt Ion:168 Resp: 129874
 Ion Ratio Lower Upper
 168 100
 99 60.5 44.2 66.4



#11
 Tert butyl alcohol
 Concen: 0.284 ug/l
 RT: 2.940 min Scan# 304
 Delta R.T. 0.006 min
 Lab File: VX048753.D
 Acq: 08 Dec 2025 14:36

Tgt Ion: 59 Resp: 80
 Ion Ratio Lower Upper
 59 100
 57 0.0 8.1 12.1#

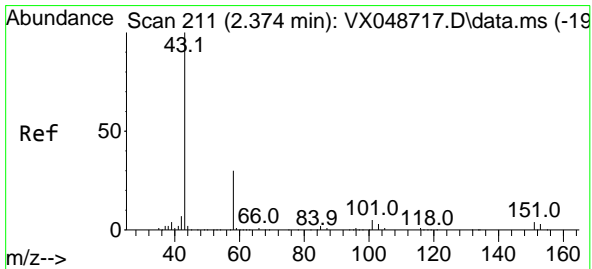
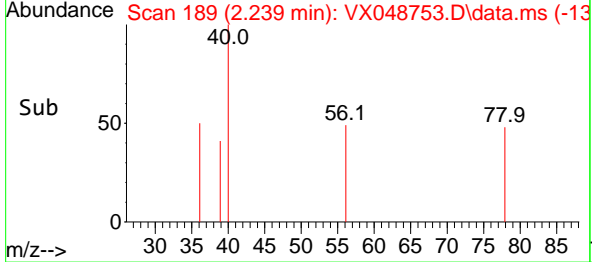
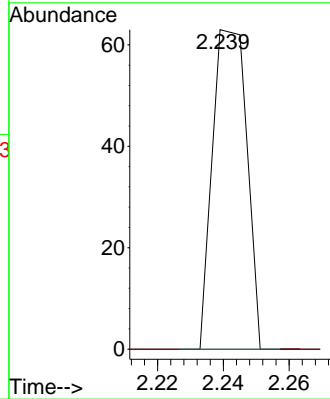
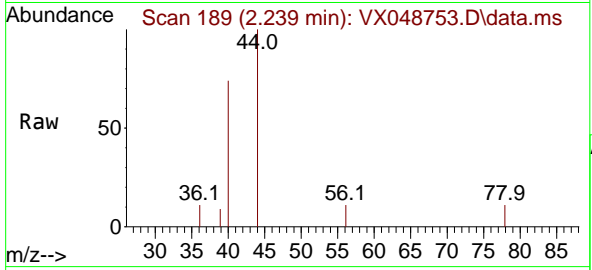




#13
 Acrolein
 Concen: 40.319 ug/l
 RT: 2.239 min Scan# 118
 Delta R.T. 0.006 min
 Lab File: VX048753.D
 Acq: 08 Dec 2025 14:36

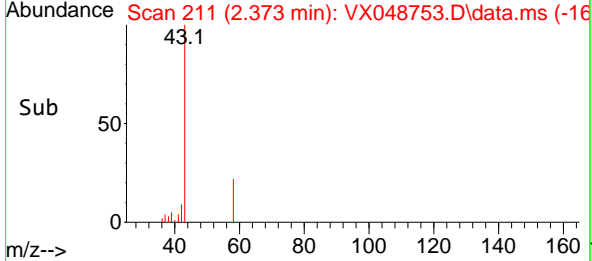
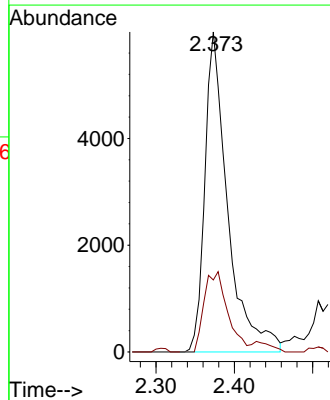
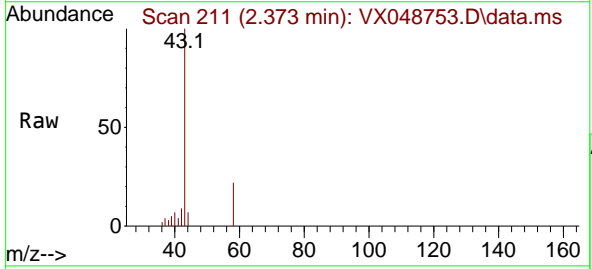
Instrument : MSVOA_X
 ClientSampleId : OWBR-02-170-120425-FD

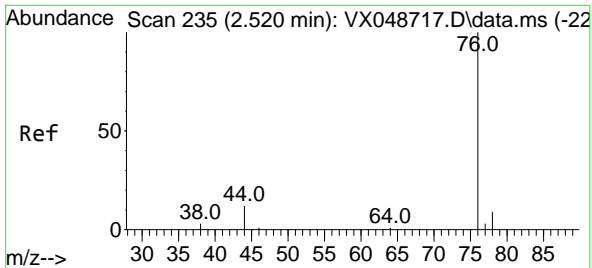
Tgt Ion: 56 Resp: 46
 Ion Ratio Lower Upper
 56 100
 55 0.0 55.8 83.6#



#16
 Acetone
 Concen: 18.200 ug/l
 RT: 2.373 min Scan# 211
 Delta R.T. -0.000 min
 Lab File: VX048753.D
 Acq: 08 Dec 2025 14:36

Tgt Ion: 43 Resp: 12145
 Ion Ratio Lower Upper
 43 100
 58 22.5 25.0 37.4#

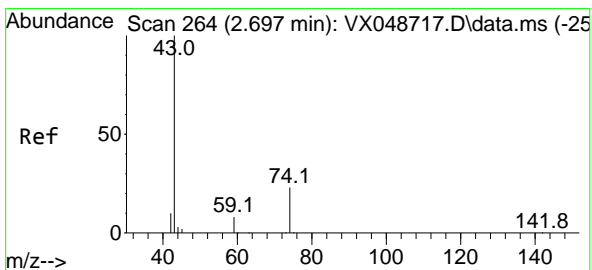
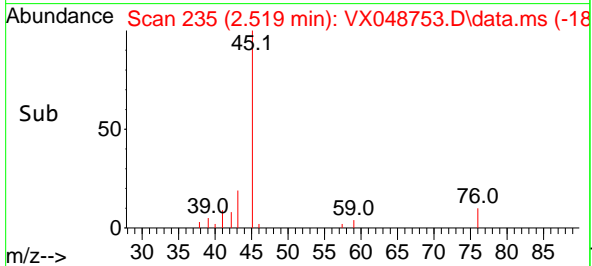
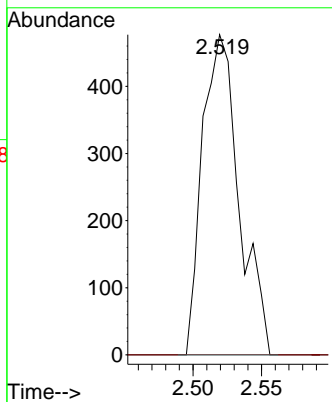
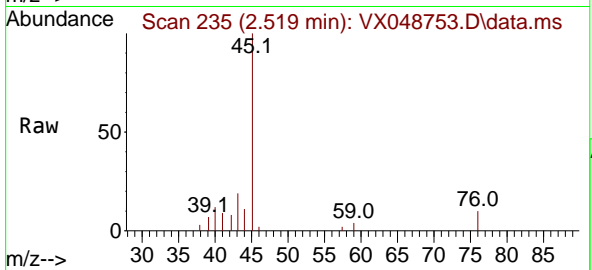




#17
 Carbon Disulfide
 Concen: 0.203 ug/l
 RT: 2.519 min Scan# 21
 Delta R.T. -0.000 min
 Lab File: VX048753.D
 Acq: 08 Dec 2025 14:36

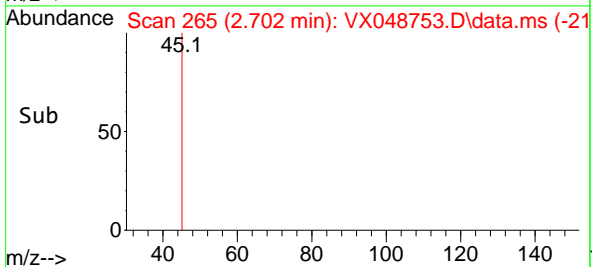
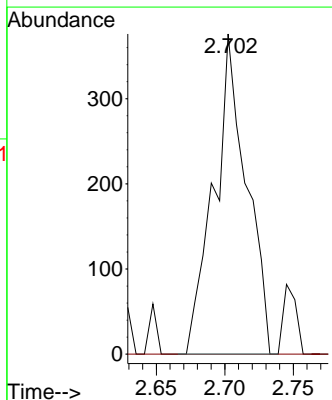
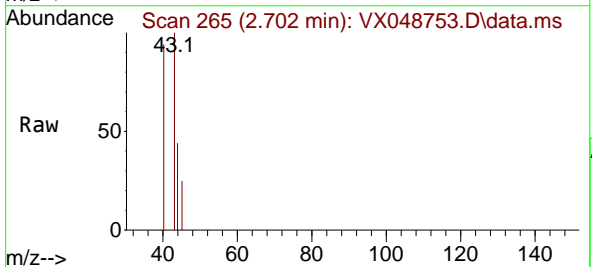
Instrument : MSVOA_X
 ClientSampleId : OWBR-02-170-120425-FD

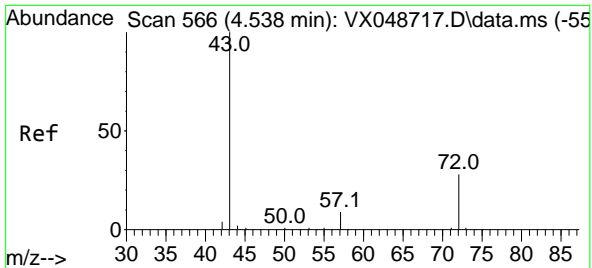
Tgt Ion: 76 Resp: 891
 Ion Ratio Lower Upper
 76 100
 78 0.0 7.4 11.2#



#18
 Methyl Acetate
 Concen: 0.330 ug/l
 RT: 2.702 min Scan# 265
 Delta R.T. 0.006 min
 Lab File: VX048753.D
 Acq: 08 Dec 2025 14:36

Tgt Ion: 43 Resp: 620
 Ion Ratio Lower Upper
 43 100
 74 0.0 19.2 28.8#

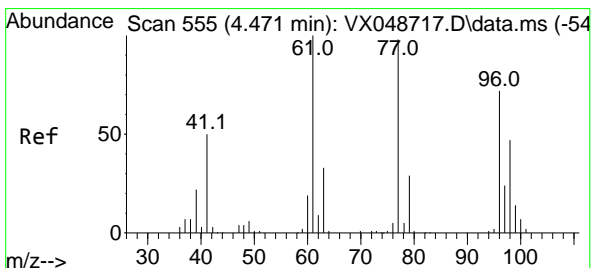
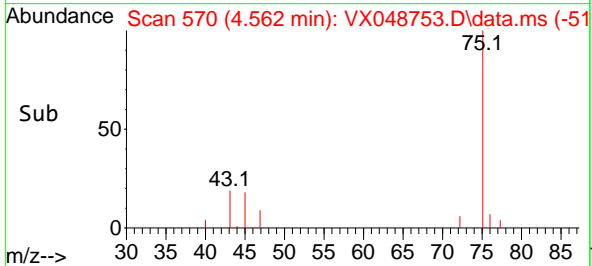
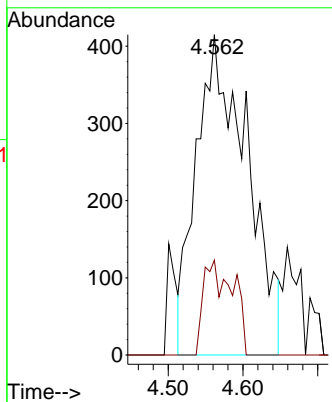
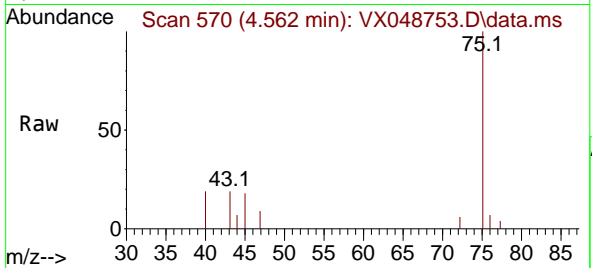




#25
 2-Butanone
 Concen: 1.986 ug/l
 RT: 4.562 min Scan# 51
 Delta R.T. 0.024 min
 Lab File: VX048753.D
 Acq: 08 Dec 2025 14:36

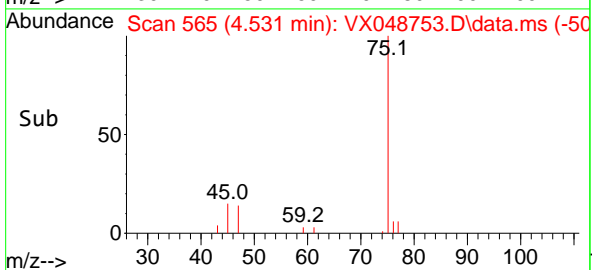
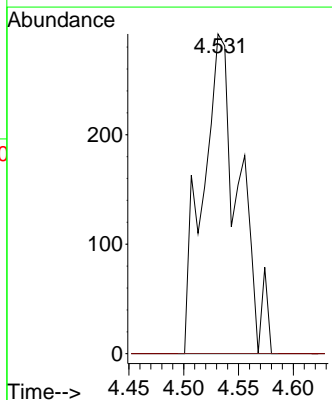
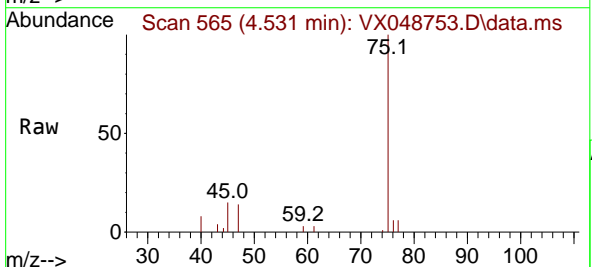
Instrument : MSVOA_X
 ClientSampleId : OWBR-02-170-120425-FD

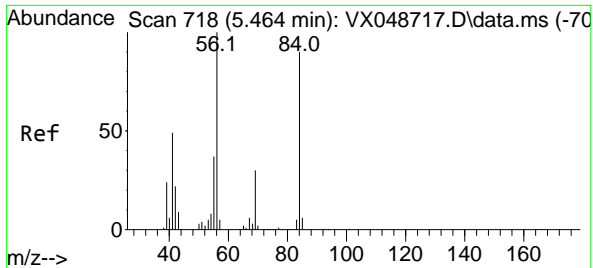
Tgt Ion: 43 Resp: 1956
 Ion Ratio Lower Upper
 43 100
 72 36.5 22.6 34.0#



#26
 2,2-Dichloropropane
 Concen: 0.287 ug/l
 RT: 4.531 min Scan# 565
 Delta R.T. 0.061 min
 Lab File: VX048753.D
 Acq: 08 Dec 2025 14:36

Tgt Ion: 77 Resp: 671
 Ion Ratio Lower Upper
 77 100
 97 0.0 11.6 34.8#



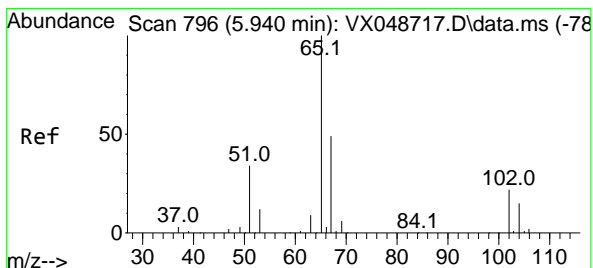
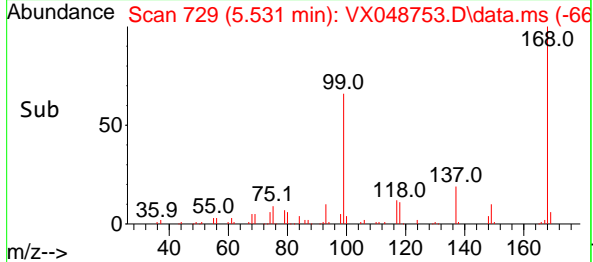
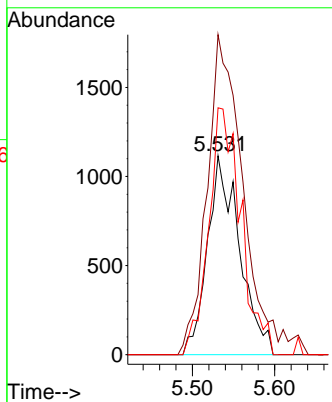
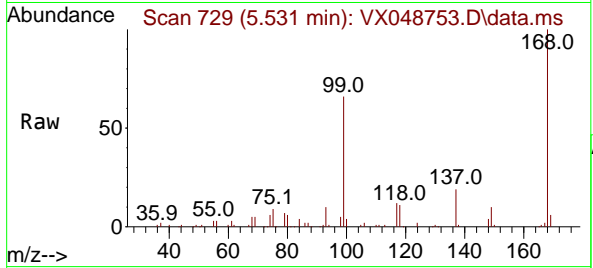


#31
 Cyclohexane
 Concen: 1.285 ug/l
 RT: 5.531 min Scan# 718
 Delta R.T. 0.067 min
 Lab File: VX048753.D
 Acq: 08 Dec 2025 14:36

Instrument : MSVOA_X
 ClientSampleId : OWBR-02-170-120425-FD

Tgt Ion: 56 Resp: 3027

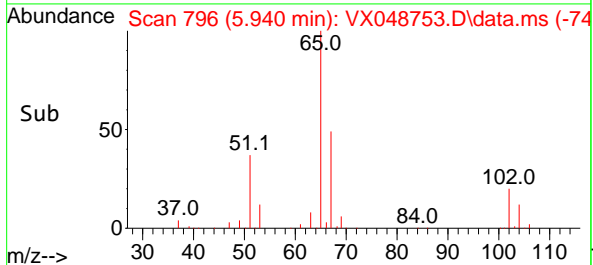
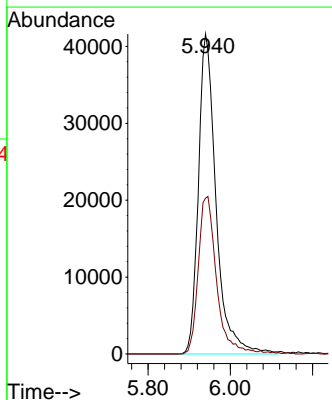
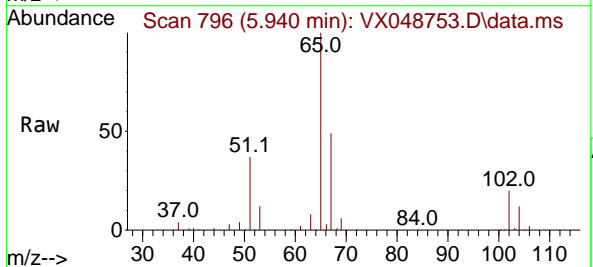
Ion	Ratio	Lower	Upper
56	100		
69	160.9	24.2	36.2#
84	124.2	72.1	108.1#

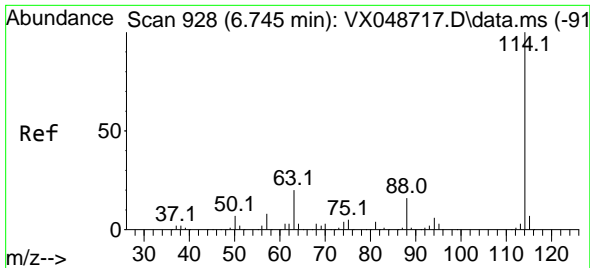


#33
 1,2-Dichloroethane-d4
 Concen: 71.030 ug/l
 RT: 5.940 min Scan# 796
 Delta R.T. -0.000 min
 Lab File: VX048753.D
 Acq: 08 Dec 2025 14:36

Tgt Ion: 65 Resp: 123816

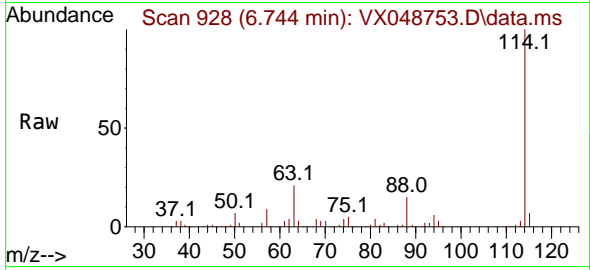
Ion	Ratio	Lower	Upper
65	100		
67	50.7	0.0	107.4



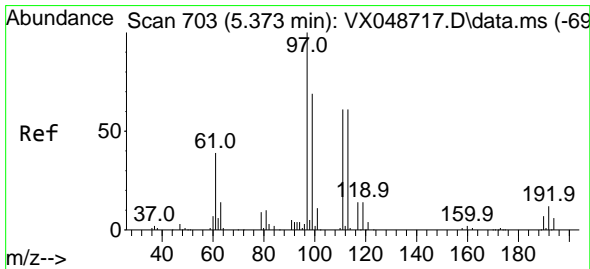
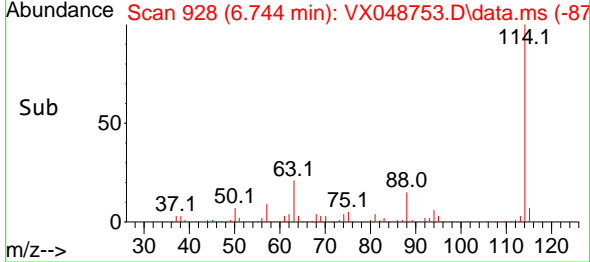
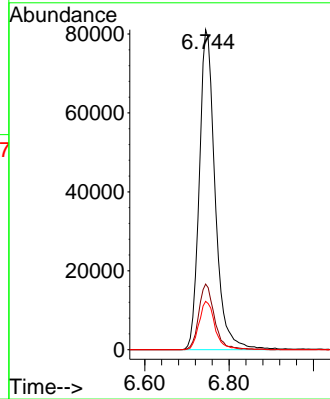


#34
 1,4-Difluorobenzene
 Concen: 50.000 ug/l
 RT: 6.744 min Scan# 91
 Delta R.T. -0.000 min
 Lab File: VX048753.D
 Acq: 08 Dec 2025 14:36

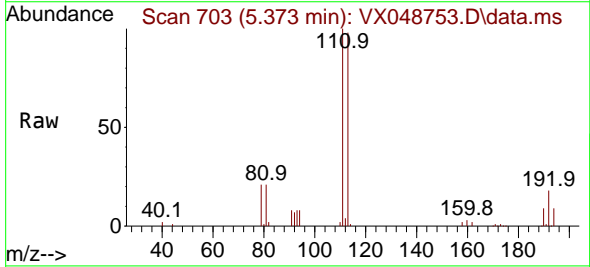
Instrument : MSVOA_X
 ClientSampleId : OWBR-02-170-120425-FD



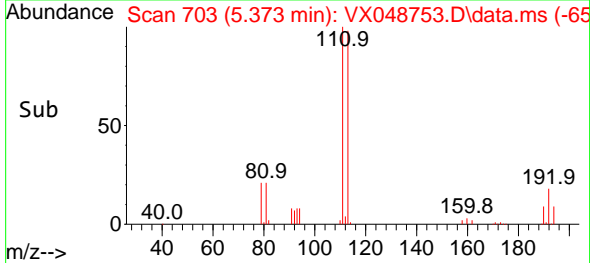
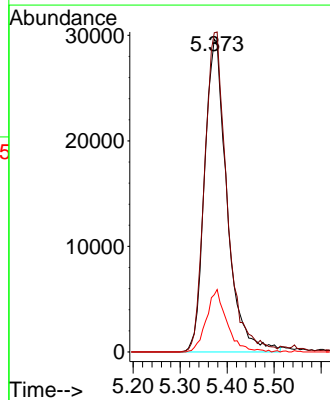
Tgt Ion:114 Resp: 212277
 Ion Ratio Lower Upper
 114 100
 63 20.5 0.0 39.0
 88 15.1 0.0 31.8

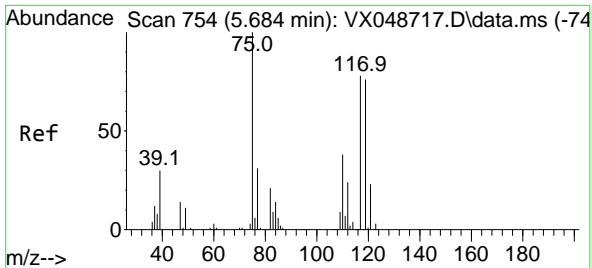


#35
 Dibromofluoromethane
 Concen: 67.027 ug/l
 RT: 5.373 min Scan# 703
 Delta R.T. -0.000 min
 Lab File: VX048753.D
 Acq: 08 Dec 2025 14:36



Tgt Ion:113 Resp: 97967
 Ion Ratio Lower Upper
 113 100
 111 102.4 79.5 119.3
 192 18.3 16.1 24.1

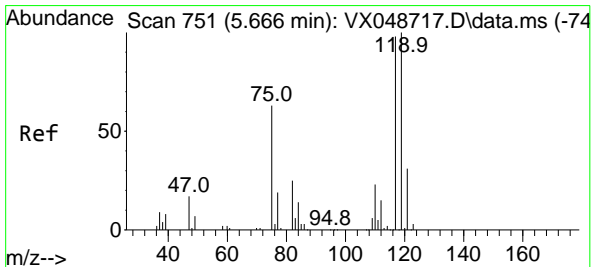
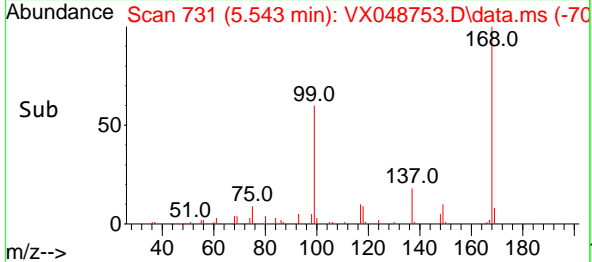
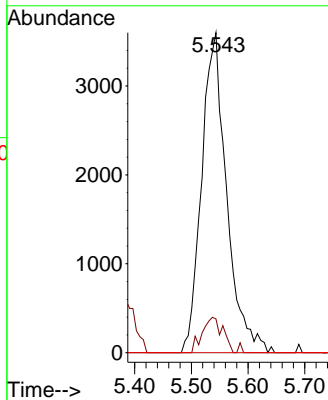
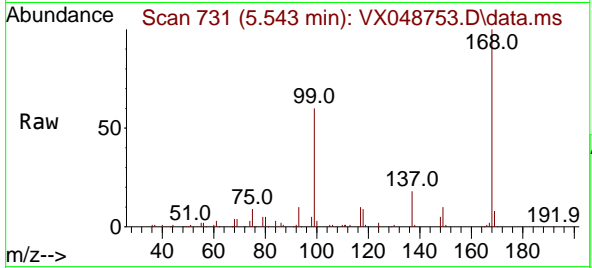




#36
 1,1-Dichloropropene
 Concen: 5.518 ug/l
 RT: 5.543 min Scan# 711
 Delta R.T. -0.141 min
 Lab File: VX048753.D
 Acq: 08 Dec 2025 14:36

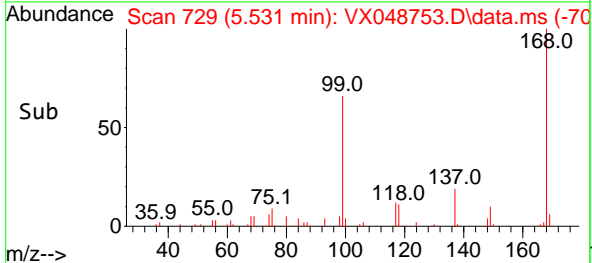
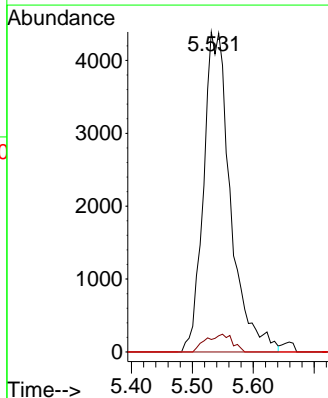
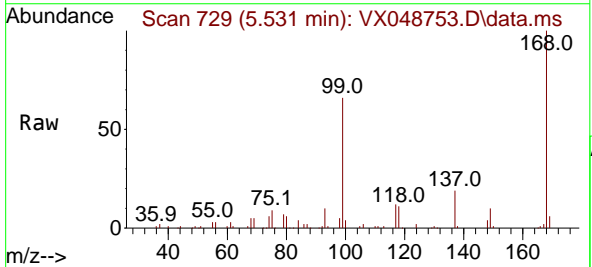
Instrument : MSVOA_X
 ClientSampleId : OWBR-02-170-120425-FD

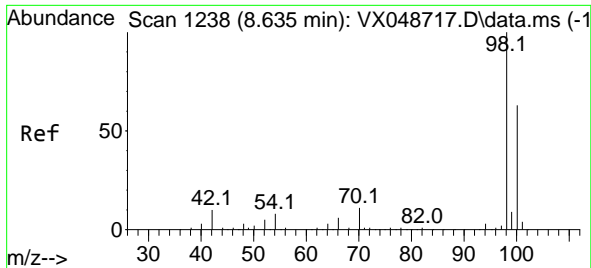
Tgt Ion	Resp	Lower	Upper
75	11047		
75	100		
110	9.0	18.6	55.8#
77	0.0	25.3	37.9#



#38
 Carbon Tetrachloride
 Concen: 5.952 ug/l
 RT: 5.531 min Scan# 729
 Delta R.T. -0.135 min
 Lab File: VX048753.D
 Acq: 08 Dec 2025 14:36

Tgt Ion	Resp	Lower	Upper
117	13496		
117	100		
119	3.9	80.5	120.7#
121	0.0	25.4	38.0#

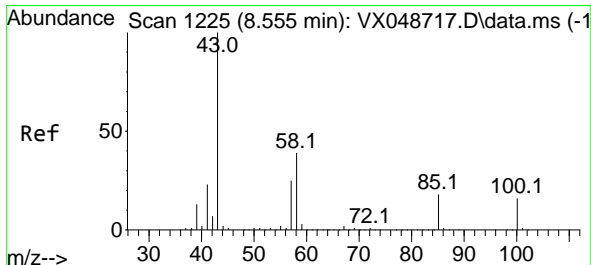
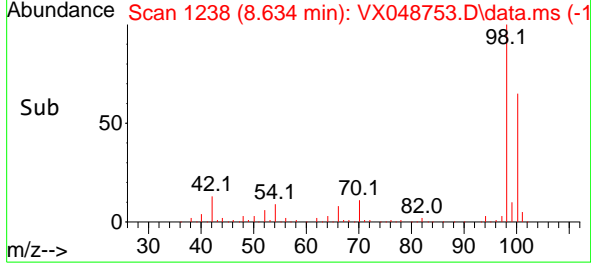
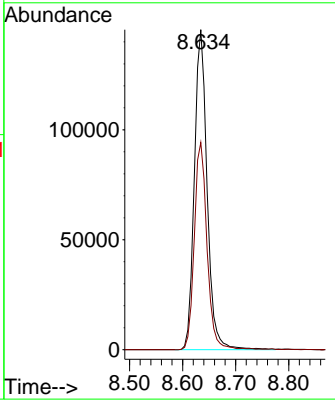
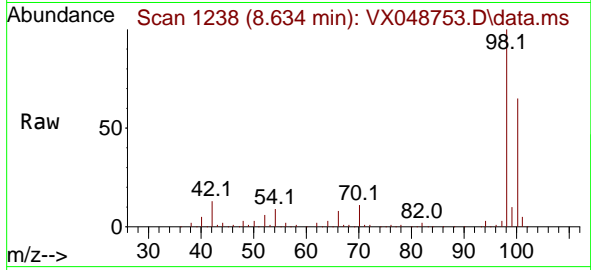




#50
 Toluene-d8
 Concen: 47.603 ug/l
 RT: 8.634 min Scan# 11
 Delta R.T. -0.000 min
 Lab File: VX048753.D
 Acq: 08 Dec 2025 14:36

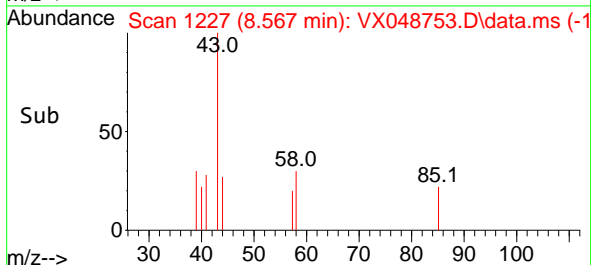
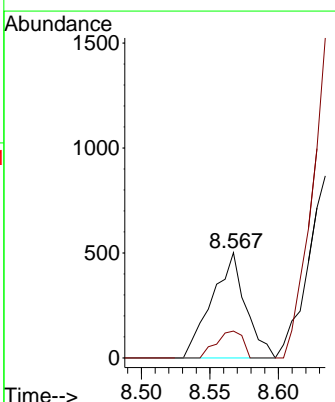
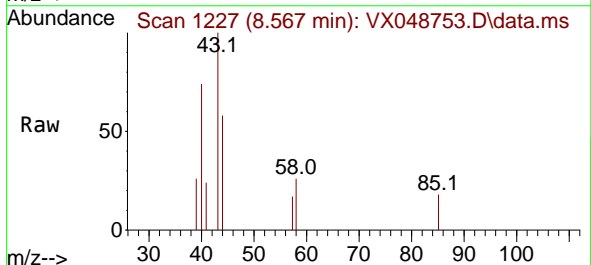
Instrument : MSVOA_X
 ClientSampleId : OWBR-02-170-120425-FD

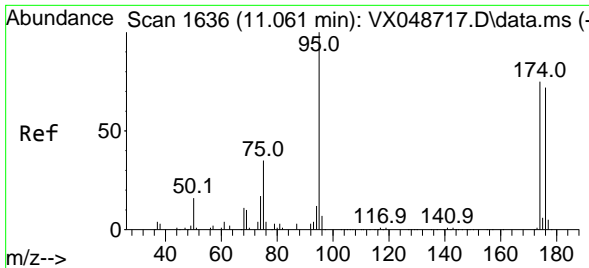
Tgt Ion: 98 Resp: 243890
 Ion Ratio Lower Upper
 98 100
 100 64.7 53.4 80.0



#51
 4-Methyl-2-Pentanone
 Concen: 0.382 ug/l
 RT: 8.567 min Scan# 1227
 Delta R.T. 0.012 min
 Lab File: VX048753.D
 Acq: 08 Dec 2025 14:36

Tgt Ion: 43 Resp: 858
 Ion Ratio Lower Upper
 43 100
 58 20.2 32.2 48.4#



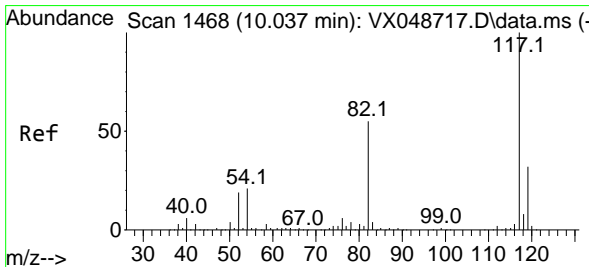
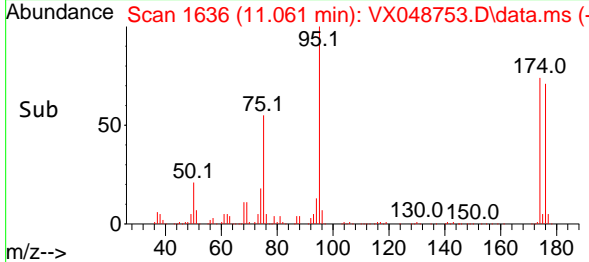
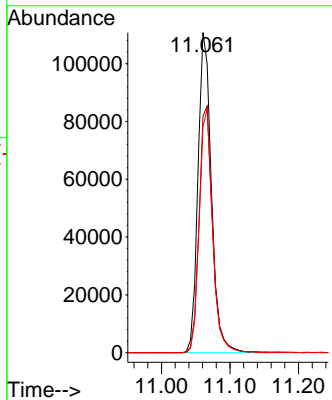
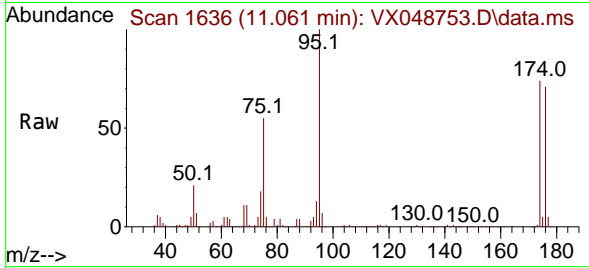


#62
 4-Bromofluorobenzene
 Concen: 85.642 ug/l
 RT: 11.061 min Scan# 11
 Delta R.T. -0.000 min
 Lab File: VX048753.D
 Acq: 08 Dec 2025 14:36

Instrument : MSVOA_X
 ClientSampleId : OWBR-02-170-120425-FD

Tgt Ion: 95 Resp: 151305

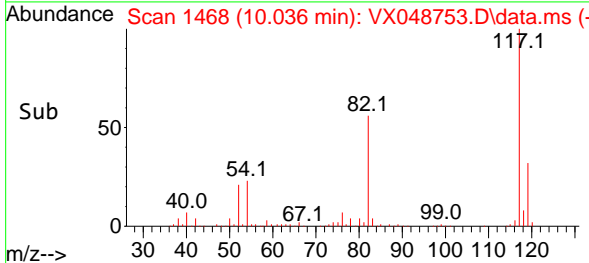
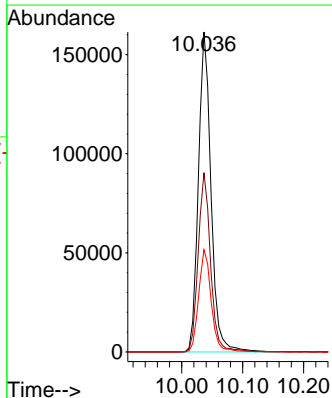
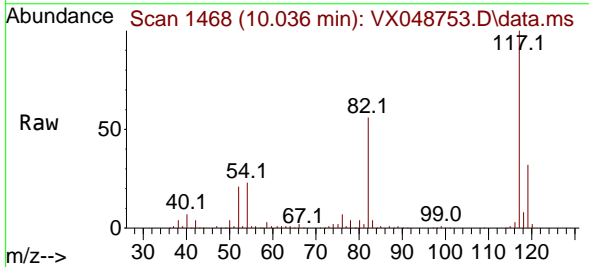
Ion	Ratio	Lower	Upper
95	100		
174	77.5	0.0	157.8
176	75.2	0.0	154.0

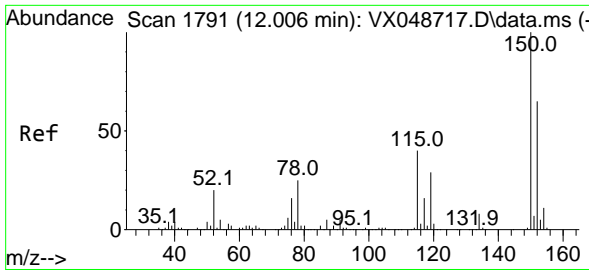


#63
 Chlorobenzene-d5
 Concen: 50.000 ug/l
 RT: 10.036 min Scan# 1468
 Delta R.T. -0.000 min
 Lab File: VX048753.D
 Acq: 08 Dec 2025 14:36

Tgt Ion: 117 Resp: 232388

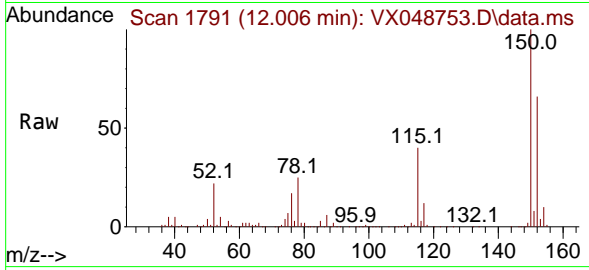
Ion	Ratio	Lower	Upper
117	100		
82	56.1	44.1	66.1
119	32.0	25.2	37.8



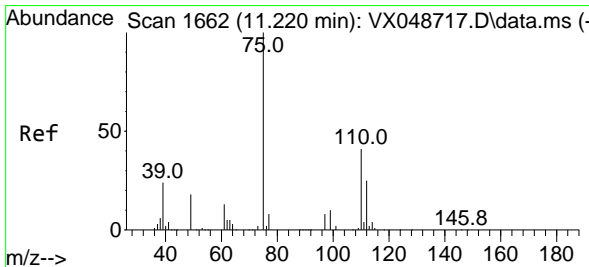
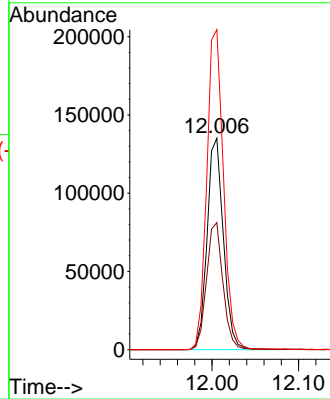
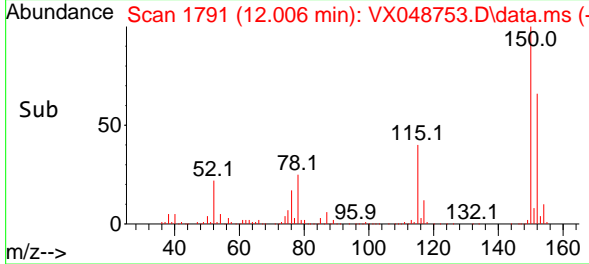


#72
 1,4-Dichlorobenzene-d4
 Concen: 50.000 ug/l
 RT: 12.006 min Scan# 11
 Delta R.T. -0.000 min
 Lab File: VX048753.D
 Acq: 08 Dec 2025 14:36

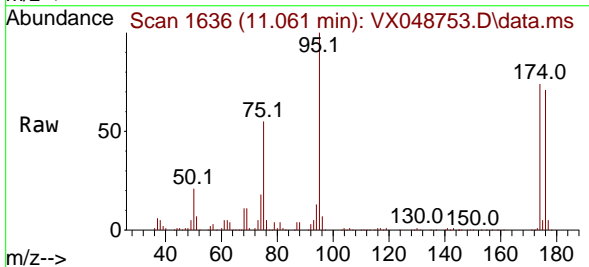
Instrument : MSVOA_X
 ClientSampleId : OWBR-02-170-120425-FD



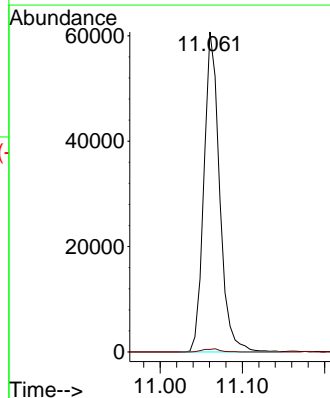
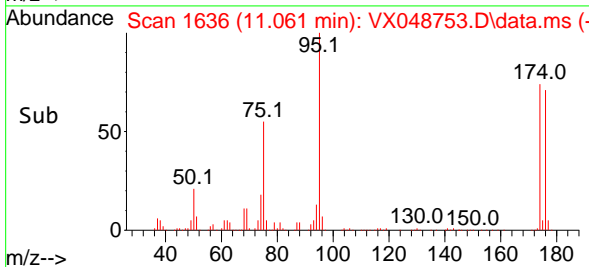
Tgt Ion:152 Resp: 176527
 Ion Ratio Lower Upper
 152 100
 115 60.8 42.1 126.4
 150 155.5 0.0 347.8

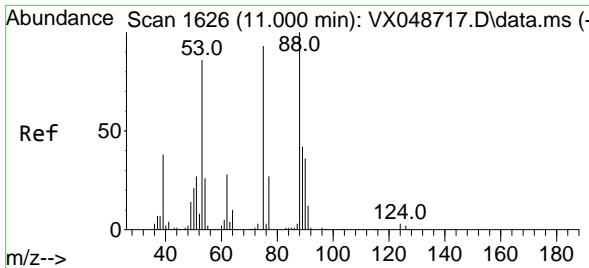


#76
 1,2,3-Trichloropropane
 Concen: 24.482 ug/l
 RT: 11.061 min Scan# 1636
 Delta R.T. -0.159 min
 Lab File: VX048753.D
 Acq: 08 Dec 2025 14:36



Tgt Ion: 75 Resp: 80494
 Ion Ratio Lower Upper
 75 100
 77 1.1 24.3 73.0#

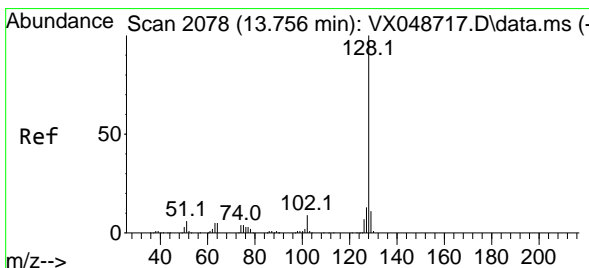
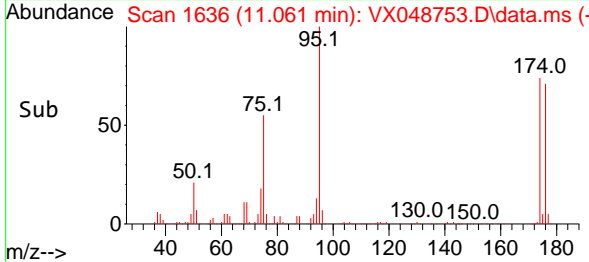
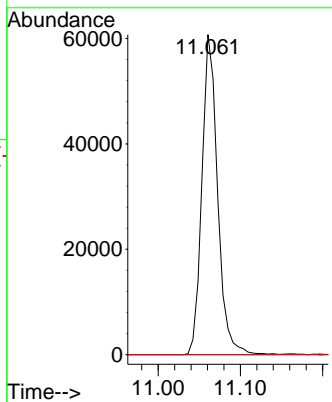
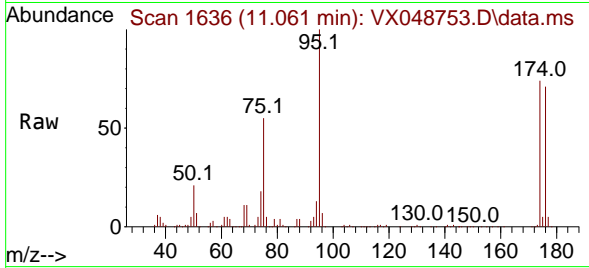




#81
 trans-1,4-Dichloro-2-butene
 Concen: 58.155 ug/l
 RT: 11.061 min Scan# 11061
 Delta R.T. 0.061 min
 Lab File: VX048753.D
 Acq: 08 Dec 2025 14:36

Instrument : MSVOA_X
 ClientSampleId : OWBR-02-170-120425-FD

Tgt Ion: 75 Resp: 80494
 Ion Ratio Lower Upper
 75 100
 53 0.0 79.9 119.9#
 89 0.0 67.1 100.7#



#95
 Naphthalene
 Concen: Below Cal
 RT: 13.774 min Scan# 2081
 Delta R.T. 0.018 min
 Lab File: VX048753.D
 Acq: 08 Dec 2025 14:36

Tgt Ion:128 Resp: 92
 Ion Ratio Lower Upper
 128 100
 127 0.0 10.2 15.2#
 129 0.0 8.6 13.0#

