

Data Path : Z:\voasrv\HPCHEM1\MSVOA\_X\Data\VX120825\  
 Data File : VX048755.D  
 Acq On : 08 Dec 2025 15:18  
 Operator : JC/MD  
 Sample : Q3787-13  
 Misc : 5.0mL/MSVOA\_X/WATER  
 ALS Vial : 15 Sample Multiplier: 1

Instrument :  
 MSVOA\_X  
 ClientSampleId :  
 OW-03B-51.5-120425-FD

Quant Time: Dec 09 04:11:39 2025  
 Quant Method : Z:\voasrv\HPCHEM1\MSVOA\_X\Method\82X120425W.M  
 Quant Title : SW846 8260  
 QLast Update : Fri Dec 05 03:27:34 2025  
 Response via : Initial Calibration

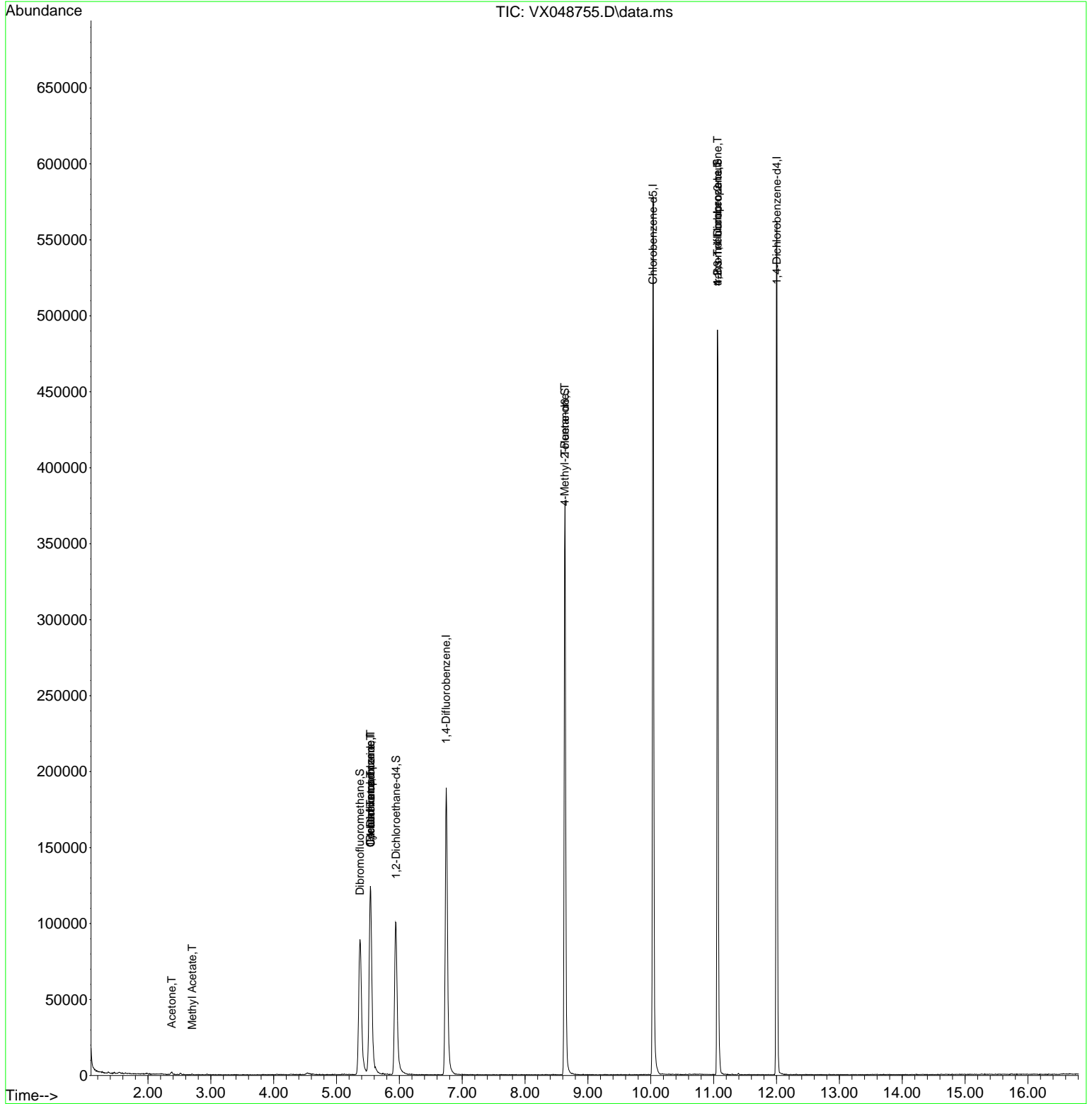
Compound	R.T.	QIon	Response	Conc	Units	Dev(Min)
-----						
Internal Standards						
1) Pentafluorobenzene	5.538	168	121788	50.000	ug/l	# 0.00
34) 1,4-Difluorobenzene	6.745	114	204088	50.000	ug/l	0.00
63) Chlorobenzene-d5	10.037	117	259488	50.000	ug/l	0.00
72) 1,4-Dichlorobenzene-d4	12.006	152	118375	50.000	ug/l	0.00
System Monitoring Compounds						
33) 1,2-Dichloroethane-d4	5.946	65	114522	70.060	ug/l	0.00
Spiked Amount	50.000	Range 78 - 117	Recovery	=	140.120%#	
35) Dibromofluoromethane	5.373	113	87733	62.433	ug/l	0.00
Spiked Amount	50.000	Range 75 - 124	Recovery	=	124.860%#	
50) Toluene-d8	8.635	98	237814	48.280	ug/l	0.00
Spiked Amount	50.000	Range 92 - 112	Recovery	=	96.560%	
62) 4-Bromofluorobenzene	11.061	95	131784	77.586	ug/l	0.00
Spiked Amount	50.000	Range 83 - 123	Recovery	=	155.180%#	
Target Compounds						
						Qvalue
16) Acetone	2.380	43	2363	3.776	ug/l	97
18) Methyl Acetate	2.703	43	533	0.303	ug/l	# 51
31) Cyclohexane	5.544	56	2977	1.347	ug/l	# 28
36) 1,1-Dichloropropene	5.544	75	10512	5.462	ug/l	# 49
38) Carbon Tetrachloride	5.544	117	12952	5.941	ug/l	# 15
51) 4-Methyl-2-Pentanone	8.629	43	1042	0.482	ug/l	# 1
76) 1,2,3-Trichloropropane	11.061	75	72394	32.835	ug/l	# 30
81) trans-1,4-Dichloro-2-b...	11.061	75	72394	77.997	ug/l	# 3
95) Naphthalene	13.768	128	99	Below Cal		# 69
-----						

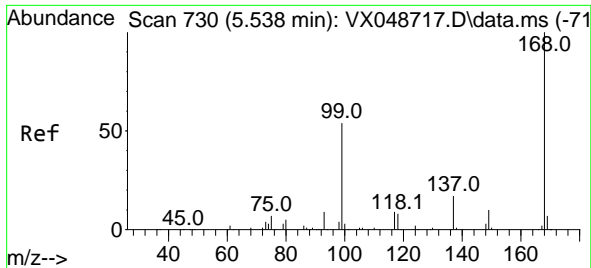
(#) = qualifier out of range (m) = manual integration (+) = signals summed

Data Path : Z:\voasrv\HPCHEM1\MSVOA\_X\Data\VX120825\  
 Data File : VX048755.D  
 Acq On : 08 Dec 2025 15:18  
 Operator : JC/MD  
 Sample : Q3787-13  
 Misc : 5.0mL/MSVOA\_X/WATER  
 ALS Vial : 15 Sample Multiplier: 1

**Instrument :**  
 MSVOA\_X  
**ClientSampleId :**  
 OW-03B-51.5-120425-FD

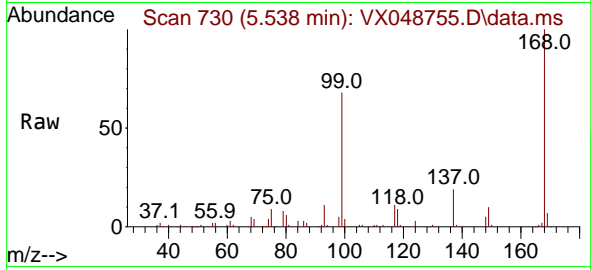
Quant Time: Dec 09 04:11:39 2025  
 Quant Method : Z:\voasrv\HPCHEM1\MSVOA\_X\Method\82X120425W.M  
 Quant Title : SW846 8260  
 QLast Update : Fri Dec 05 03:27:34 2025  
 Response via : Initial Calibration



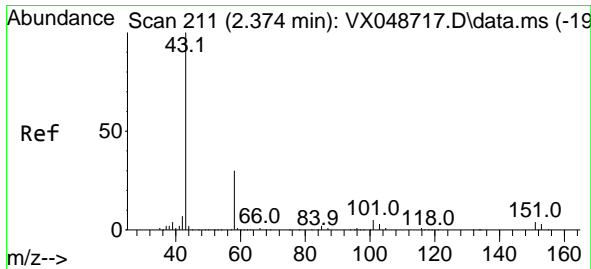
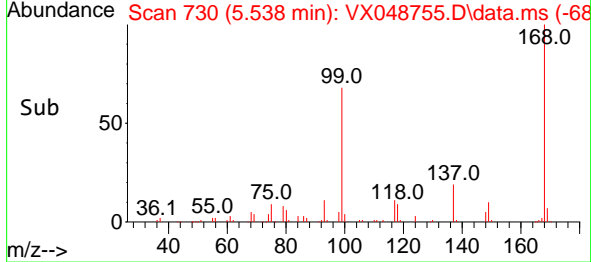
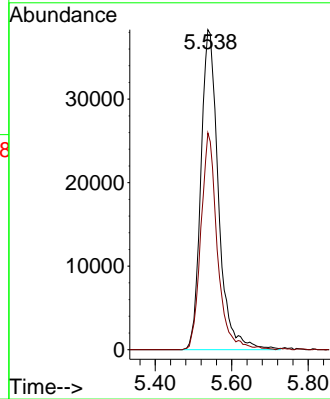


#1  
 Pentafluorobenzene  
 Concen: 50.000 ug/l  
 RT: 5.538 min Scan# 71  
 Delta R.T. -0.000 min  
 Lab File: VX048755.D  
 Acq: 08 Dec 2025 15:18

Instrument : MSVOA\_X  
 ClientSampleId : OW-03B-51.5-120425-FD

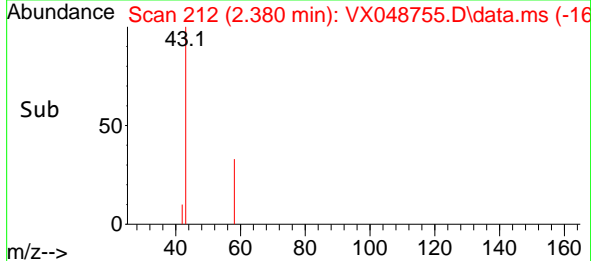
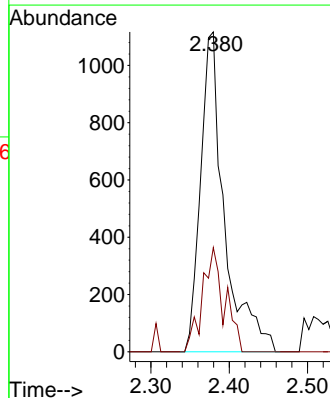
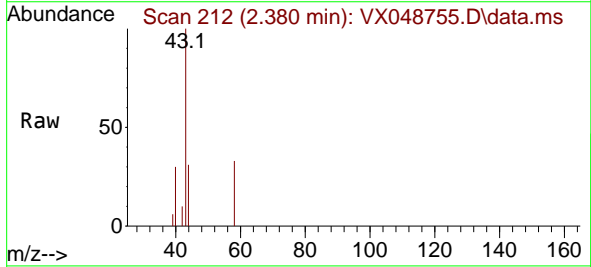


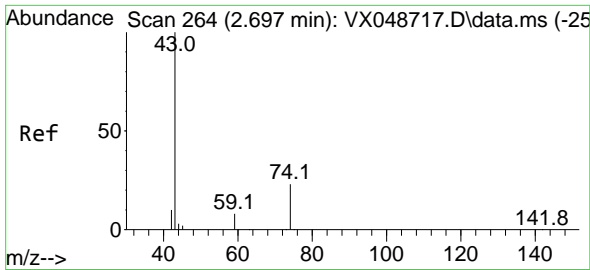
Tgt Ion:168 Resp: 121788  
 Ion Ratio Lower Upper  
 168 100  
 99 67.8 44.2 66.4#



#16  
 Acetone  
 Concen: 3.776 ug/l  
 RT: 2.380 min Scan# 212  
 Delta R.T. 0.006 min  
 Lab File: VX048755.D  
 Acq: 08 Dec 2025 15:18

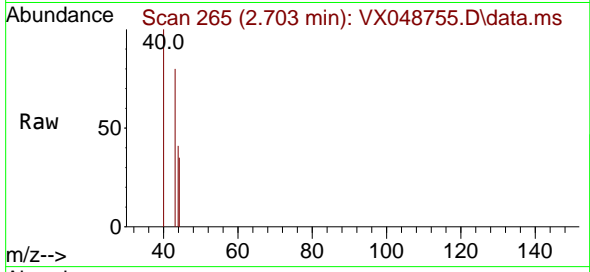
Tgt Ion: 43 Resp: 2363  
 Ion Ratio Lower Upper  
 43 100  
 58 32.6 25.0 37.4



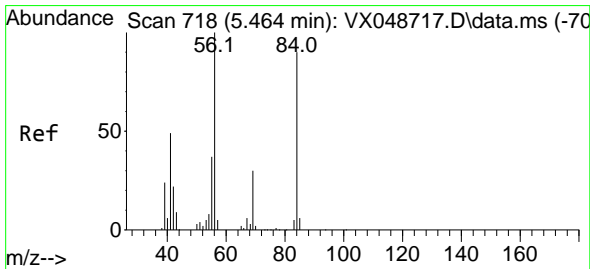
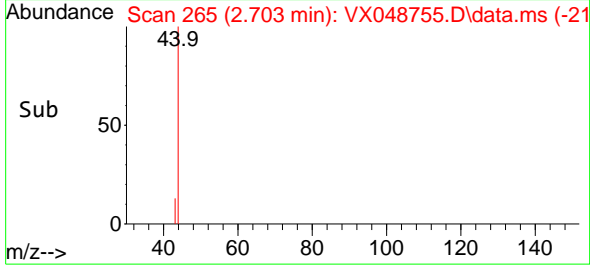
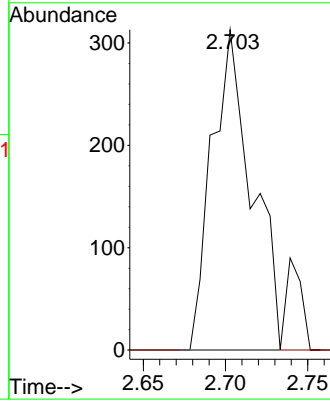


#18  
 Methyl Acetate  
 Concen: 0.303 ug/l  
 RT: 2.703 min Scan# 2  
 Delta R.T. 0.006 min  
 Lab File: VX048755.D  
 Acq: 08 Dec 2025 15:18

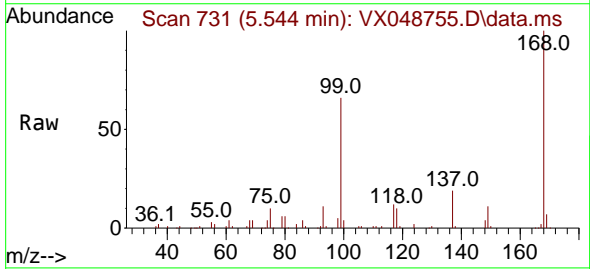
Instrument : MSVOA\_X  
 ClientSampleId : OW-03B-51.5-120425-FD



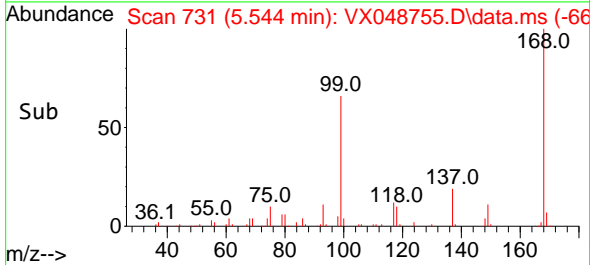
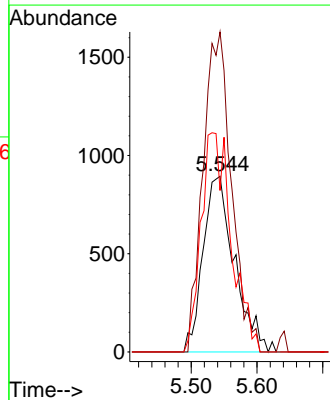
Tgt Ion: 43 Resp: 533  
 Ion Ratio Lower Upper  
 43 100  
 74 0.0 19.2 28.8#

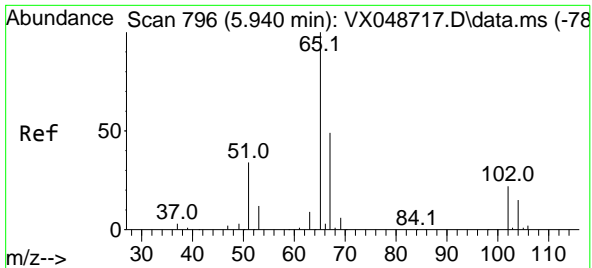


#31  
 Cyclohexane  
 Concen: 1.347 ug/l  
 RT: 5.544 min Scan# 731  
 Delta R.T. 0.079 min  
 Lab File: VX048755.D  
 Acq: 08 Dec 2025 15:18



Tgt Ion: 56 Resp: 2977  
 Ion Ratio Lower Upper  
 56 100  
 69 182.2 24.2 36.2#  
 84 91.9 72.1 108.1

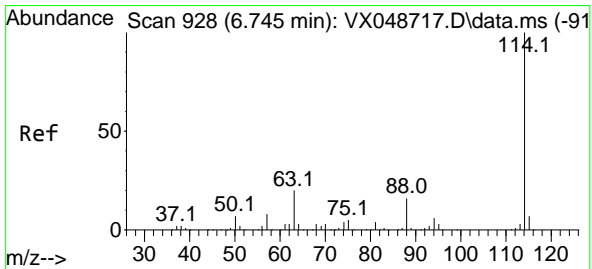
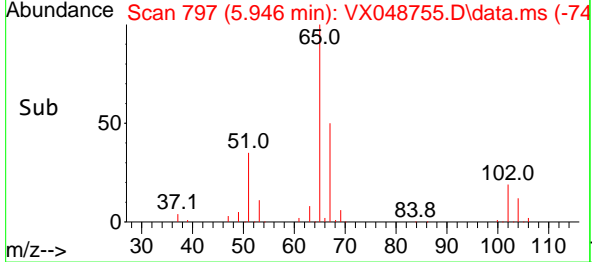
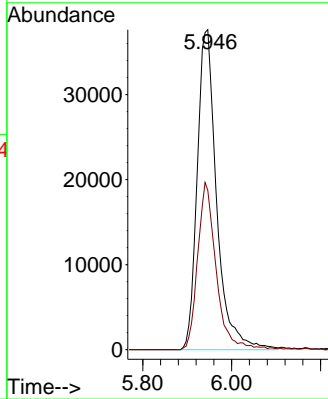
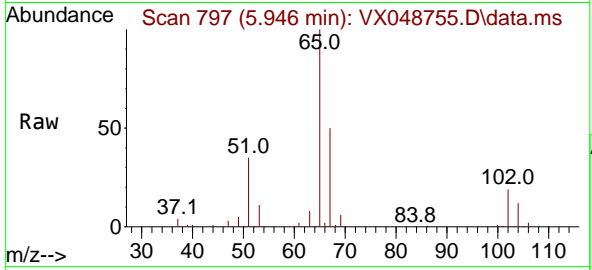




#33  
 1,2-Dichloroethane-d4  
 Concen: 70.060 ug/l  
 RT: 5.946 min Scan# 796  
 Delta R.T. 0.006 min  
 Lab File: VX048755.D  
 Acq: 08 Dec 2025 15:18

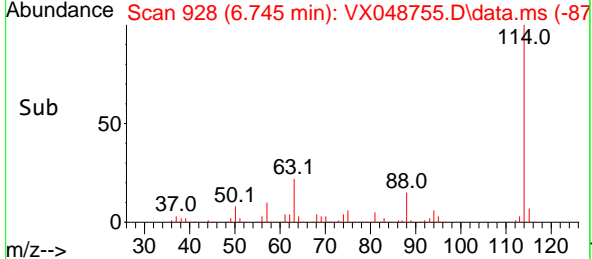
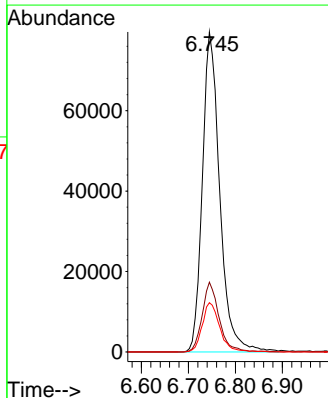
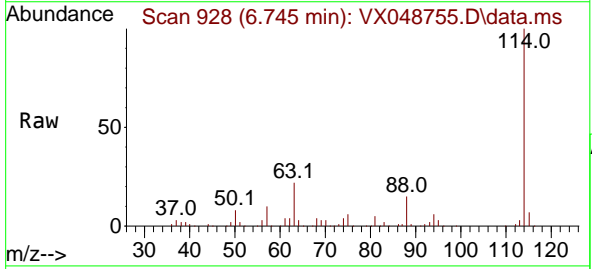
Instrument : MSVOA\_X  
 ClientSampleId : OW-03B-51.5-120425-FD

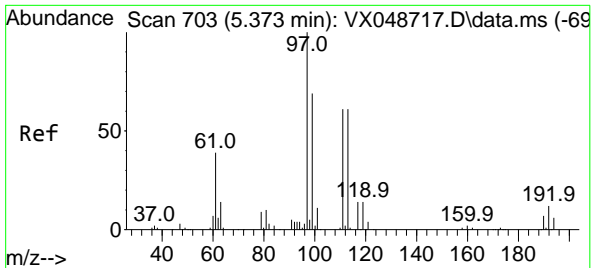
Tgt Ion: 65 Resp: 114522  
 Ion Ratio Lower Upper  
 65 100  
 67 50.0 0.0 107.4



#34  
 1,4-Difluorobenzene  
 Concen: 50.000 ug/l  
 RT: 6.745 min Scan# 928  
 Delta R.T. -0.000 min  
 Lab File: VX048755.D  
 Acq: 08 Dec 2025 15:18

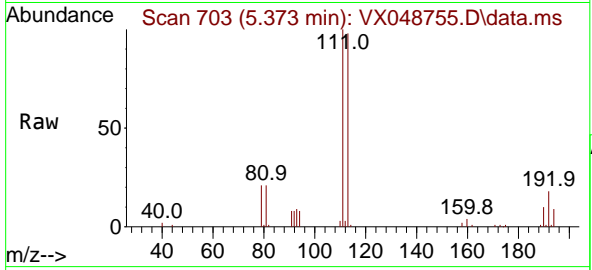
Tgt Ion: 114 Resp: 204088  
 Ion Ratio Lower Upper  
 114 100  
 63 21.8 0.0 39.0  
 88 15.4 0.0 31.8



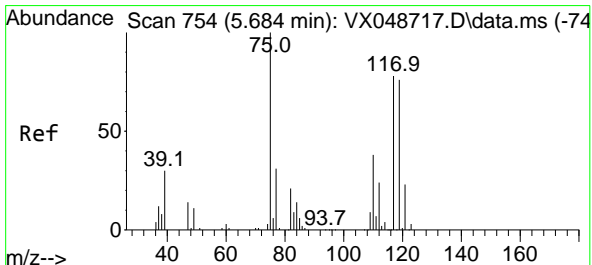
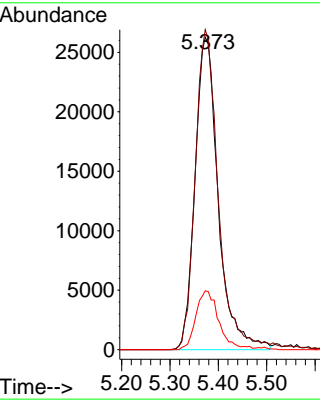
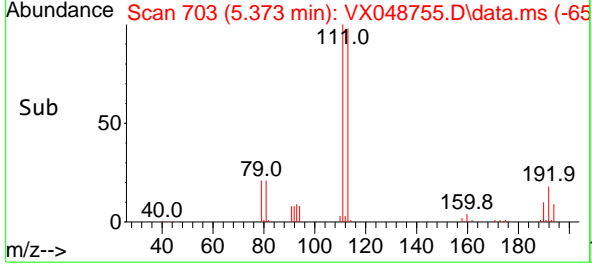


#35  
 Dibromofluoromethane  
 Concen: 62.433 ug/l  
 RT: 5.373 min Scan# 703  
 Delta R.T. 0.000 min  
 Lab File: VX048755.D  
 Acq: 08 Dec 2025 15:18

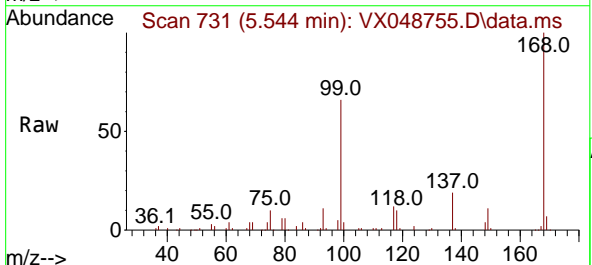
Instrument : MSVOA\_X  
 ClientSampleId : OW-03B-51.5-120425-FD



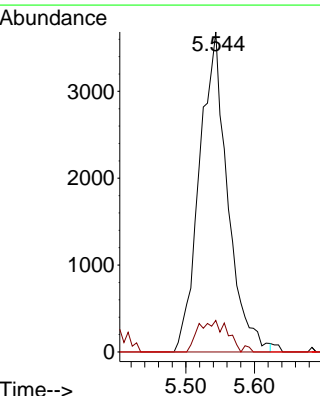
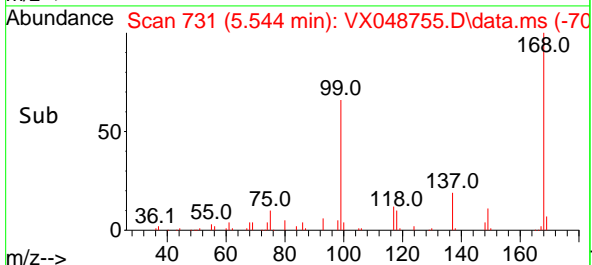
Tgt Ion:113 Resp: 87733  
 Ion Ratio Lower Upper  
 113 100  
 111 101.8 79.5 119.3  
 192 18.6 16.1 24.1

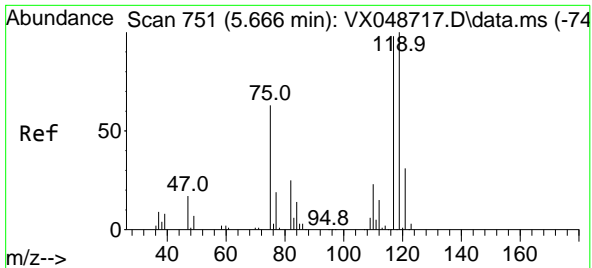


#36  
 1,1-Dichloropropene  
 Concen: 5.462 ug/l  
 RT: 5.544 min Scan# 731  
 Delta R.T. -0.140 min  
 Lab File: VX048755.D  
 Acq: 08 Dec 2025 15:18



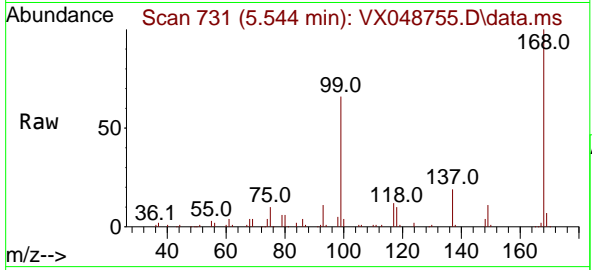
Tgt Ion: 75 Resp: 10512  
 Ion Ratio Lower Upper  
 75 100  
 110 10.0 18.6 55.8#  
 77 0.0 25.3 37.9#



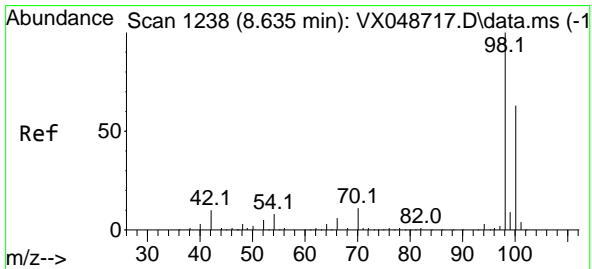
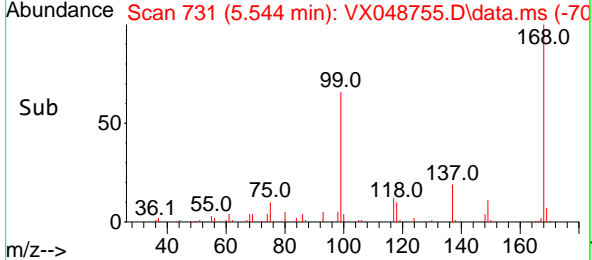
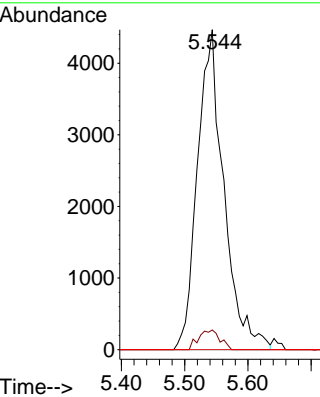


#38  
 Carbon Tetrachloride  
 Concen: 5.941 ug/l  
 RT: 5.544 min Scan# 71  
 Delta R.T. -0.122 min  
 Lab File: VX048755.D  
 Acq: 08 Dec 2025 15:18

Instrument : MSVOA\_X  
 ClientSampleId : OW-03B-51.5-120425-FD

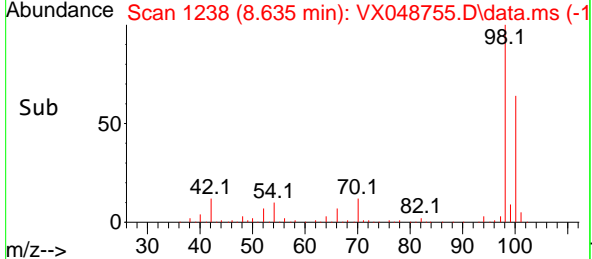
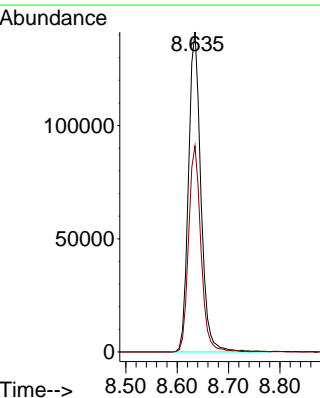
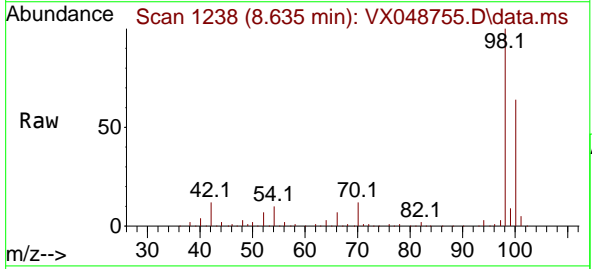


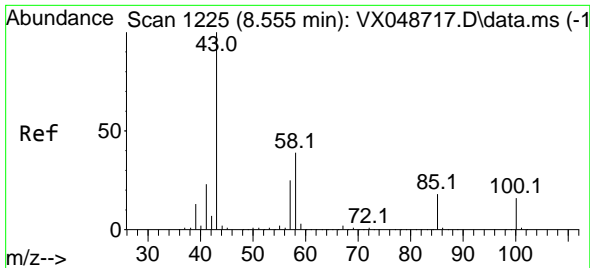
Tgt Ion: 117 Resp: 12952  
 Ion Ratio Lower Upper  
 117 100  
 119 6.2 80.5 120.7#  
 121 0.0 25.4 38.0#



#50  
 Toluene-d8  
 Concen: 48.280 ug/l  
 RT: 8.635 min Scan# 1238  
 Delta R.T. -0.000 min  
 Lab File: VX048755.D  
 Acq: 08 Dec 2025 15:18

Tgt Ion: 98 Resp: 237814  
 Ion Ratio Lower Upper  
 98 100  
 100 64.0 53.4 80.0

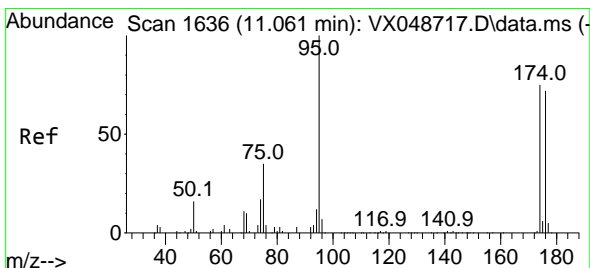
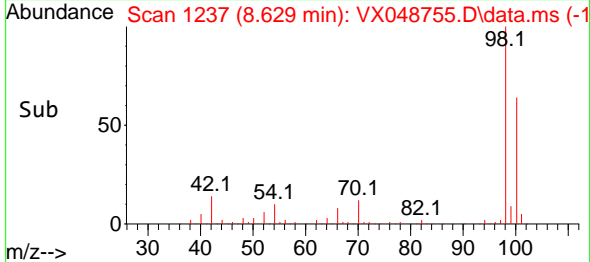
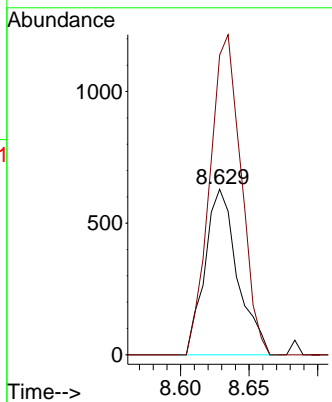
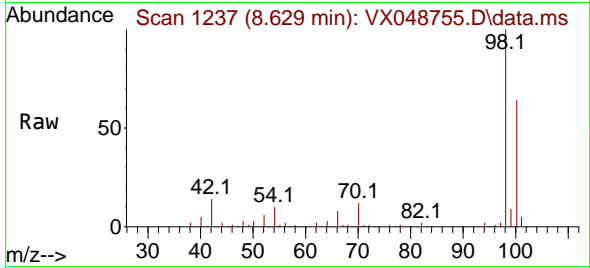




#51  
 4-Methyl-2-Pentanone  
 Concen: 0.482 ug/l  
 RT: 8.629 min Scan# 1237  
 Delta R.T. 0.073 min  
 Lab File: VX048755.D  
 Acq: 08 Dec 2025 15:18

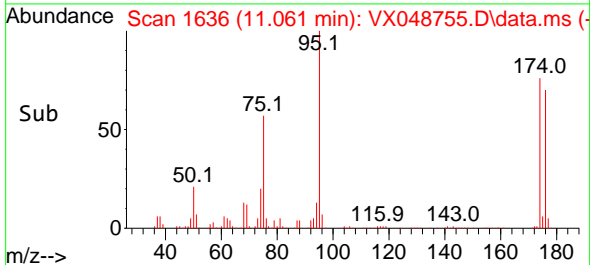
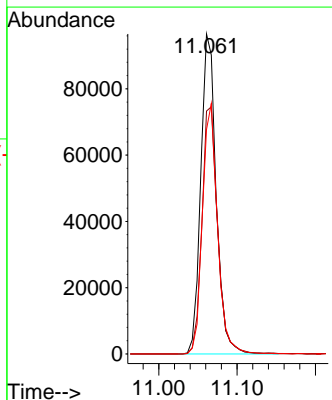
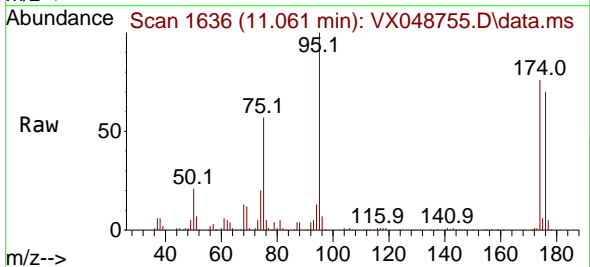
Instrument : MSVOA\_X  
 ClientSampleId : OW-03B-51.5-120425-FD

Tgt Ion: 43 Resp: 1042  
 Ion Ratio Lower Upper  
 43 100  
 58 185.8 32.2 48.4#

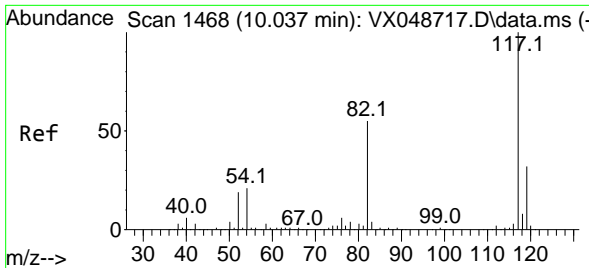


#62  
 4-Bromofluorobenzene  
 Concen: 77.586 ug/l  
 RT: 11.061 min Scan# 1636  
 Delta R.T. -0.000 min  
 Lab File: VX048755.D  
 Acq: 08 Dec 2025 15:18

Tgt Ion: 95 Resp: 131784  
 Ion Ratio Lower Upper  
 95 100  
 174 78.5 0.0 157.8  
 176 77.0 0.0 154.0





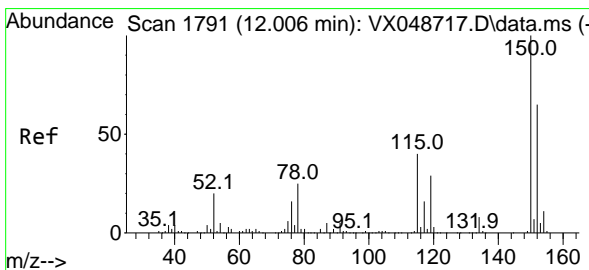
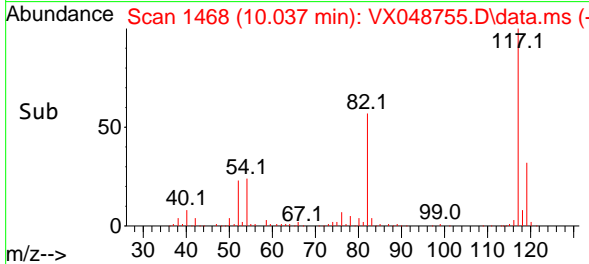
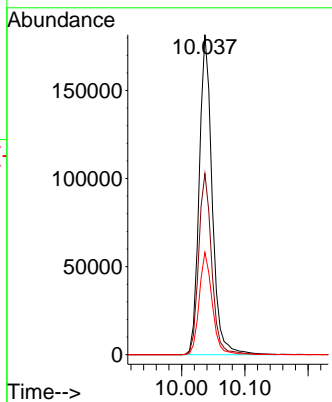
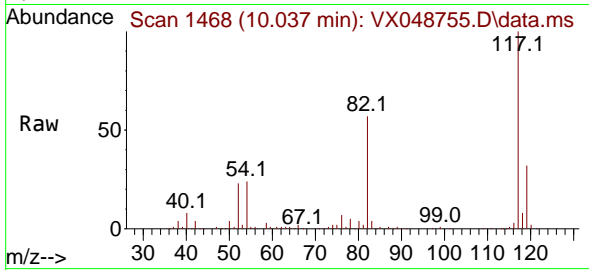


#63  
 Chlorobenzene-d5  
 Concen: 50.000 ug/l  
 RT: 10.037 min Scan# 1468  
 Delta R.T. -0.000 min  
 Lab File: VX048755.D  
 Acq: 08 Dec 2025 15:18

Instrument : MSVOA\_X  
 ClientSampleId : OW-03B-51.5-120425-FD

Tgt Ion:117 Resp: 259488

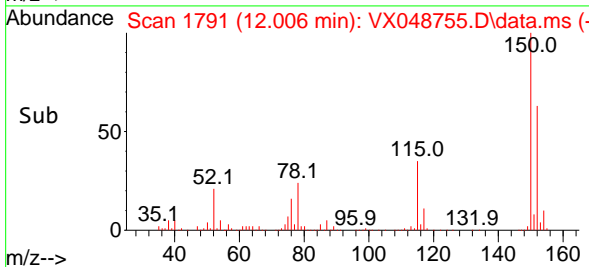
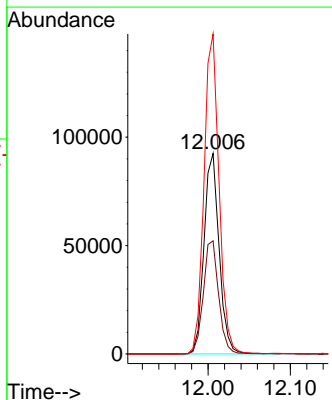
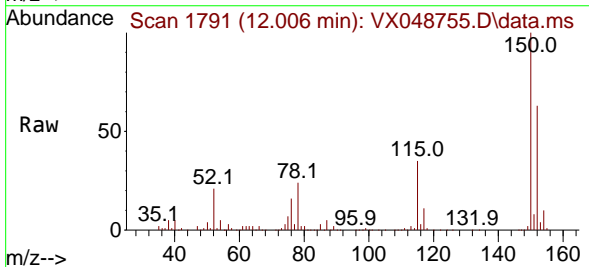
Ion	Ratio	Lower	Upper
117	100		
82	56.6	44.1	66.1
119	32.0	25.2	37.8

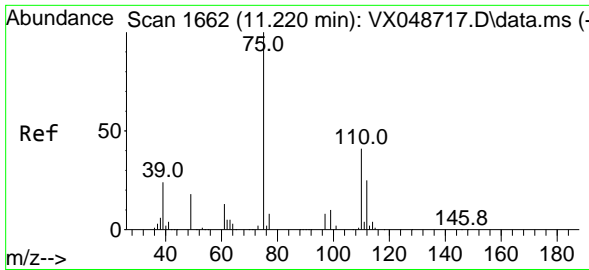


#72  
 1,4-Dichlorobenzene-d4  
 Concen: 50.000 ug/l  
 RT: 12.006 min Scan# 1791  
 Delta R.T. -0.000 min  
 Lab File: VX048755.D  
 Acq: 08 Dec 2025 15:18

Tgt Ion:152 Resp: 118375

Ion	Ratio	Lower	Upper
152	100		
115	57.2	42.1	126.4
150	158.2	0.0	347.8

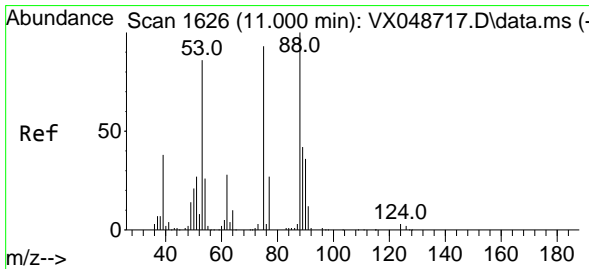
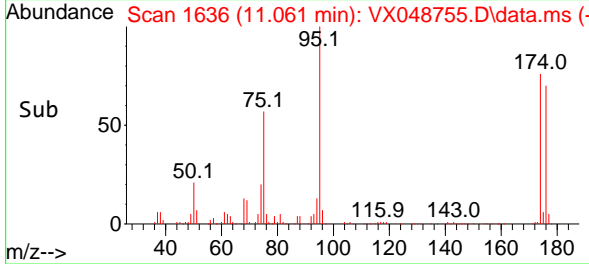
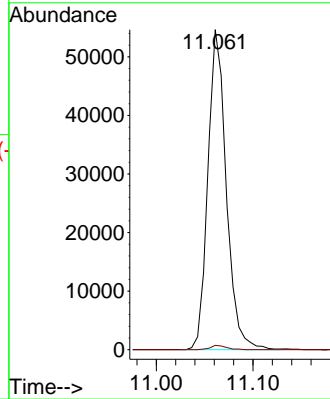
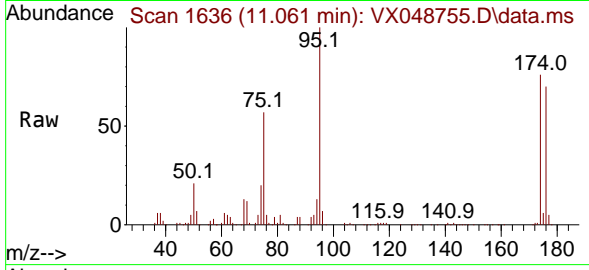




#76  
 1,2,3-Trichloropropane  
 Concen: 32.835 ug/l  
 RT: 11.061 min Scan# 1636  
 Delta R.T. -0.159 min  
 Lab File: VX048755.D  
 Acq: 08 Dec 2025 15:18

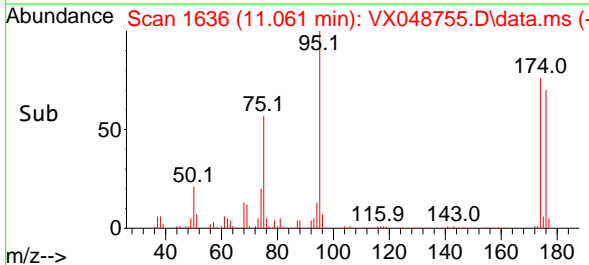
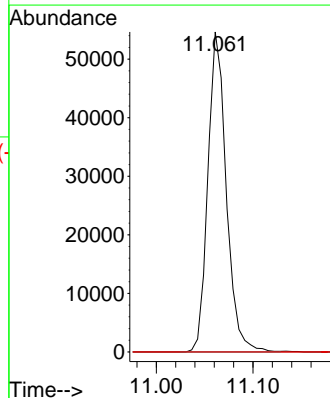
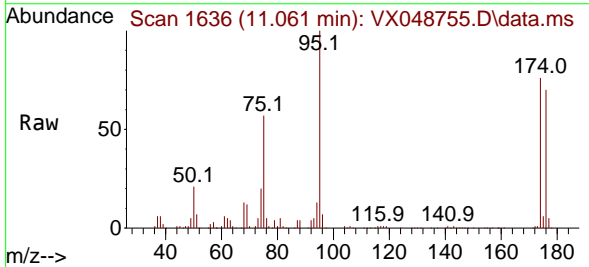
Instrument : MSVOA\_X  
 ClientSampleId : OW-03B-51.5-120425-FD

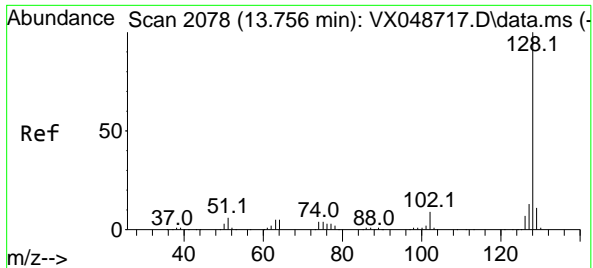
Tgt Ion: 75 Resp: 72394  
 Ion Ratio Lower Upper  
 75 100  
 77 1.2 24.3 73.0#



#81  
 trans-1,4-Dichloro-2-butene  
 Concen: 77.997 ug/l  
 RT: 11.061 min Scan# 1636  
 Delta R.T. 0.061 min  
 Lab File: VX048755.D  
 Acq: 08 Dec 2025 15:18

Tgt Ion: 75 Resp: 72394  
 Ion Ratio Lower Upper  
 75 100  
 53 0.0 79.9 119.9#  
 89 0.0 67.1 100.7#





#95  
 Naphthalene  
 Concen: Below Cal  
 RT: 13.768 min Scan# 20  
 Delta R.T. 0.012 min  
 Lab File: VX048755.D  
 Acq: 08 Dec 2025 15:18

Instrument : MSVOA\_X  
 ClientSampleId : OW-03B-51.5-120425-FD

Tgt Ion	Resp	Ion Ratio	Lower	Upper
128	99	100		
127		0.0	10.2	15.2#
129		0.0	8.6	13.0#

