

Data Path : Z:\voasrv\HPCHEM1\MSVOA\_X\Data\VX120825\  
 Data File : VX048756.D  
 Acq On : 08 Dec 2025 15:38  
 Operator : JC/MD  
 Sample : Q3787-15  
 Misc : 5.0mL/MSVOA\_X/WATER  
 ALS Vial : 16 Sample Multiplier: 1

Instrument :  
 MSVOA\_X  
 ClientSampleId :  
 OW-08B-72.5-120425

Quant Time: Dec 09 04:11:58 2025  
 Quant Method : Z:\voasrv\HPCHEM1\MSVOA\_X\Method\82X120425W.M  
 Quant Title : SW846 8260  
 QLast Update : Fri Dec 05 03:27:34 2025  
 Response via : Initial Calibration

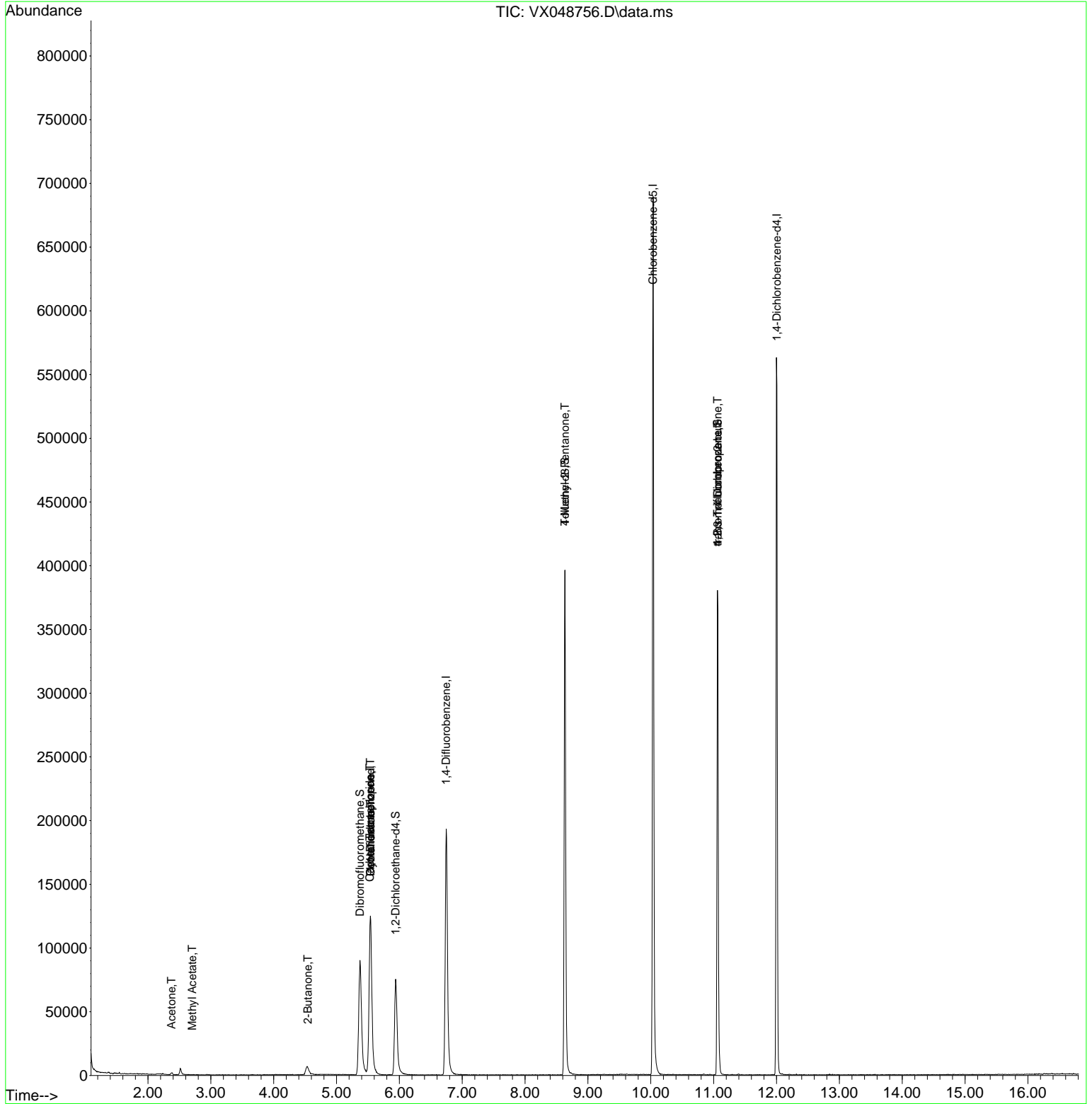
Compound	R.T.	QIon	Response	Conc	Units	Dev(Min)
-----						
Internal Standards						
1) Pentafluorobenzene	5.544	168	124545	50.000	ug/l	0.00
34) 1,4-Difluorobenzene	6.745	114	210799	50.000	ug/l	0.00
63) Chlorobenzene-d5	10.037	117	312315	50.000	ug/l	0.00
72) 1,4-Dichlorobenzene-d4	12.006	152	119855	50.000	ug/l	0.00
System Monitoring Compounds						
33) 1,2-Dichloroethane-d4	5.940	65	78747	47.108	ug/l	0.00
Spiked Amount	50.000	Range 78 - 117	Recovery	=	94.220%	
35) Dibromofluoromethane	5.373	113	86750	59.769	ug/l	0.00
Spiked Amount	50.000	Range 75 - 124	Recovery	=	119.540%	
50) Toluene-d8	8.635	98	244119	47.982	ug/l	0.00
Spiked Amount	50.000	Range 92 - 112	Recovery	=	95.960%	
62) 4-Bromofluorobenzene	11.061	95	103491	58.989	ug/l	0.00
Spiked Amount	50.000	Range 83 - 123	Recovery	=	117.980%	
Target Compounds						
						Qvalue
16) Acetone	2.374	43	2204	3.444	ug/l	97
18) Methyl Acetate	2.703	43	476	0.264	ug/l #	51
25) 2-Butanone	4.544	43	194	0.205	ug/l #	46
31) Cyclohexane	5.544	56	2877	1.273	ug/l #	11
36) 1,1-Dichloropropene	5.538	75	10164	5.113	ug/l #	49
38) Carbon Tetrachloride	5.531	117	13609	6.044	ug/l #	13
51) 4-Methyl-2-Pentanone	8.635	43	1167	0.523	ug/l #	1
76) 1,2,3-Trichloropropane	11.061	75	55538	24.879	ug/l #	30
81) trans-1,4-Dichloro-2-b...	11.061	75	55538	59.097	ug/l #	3
95) Naphthalene	13.768	128	114	Below Cal	#	69
-----						

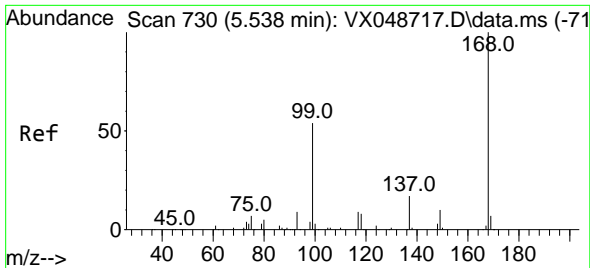
(#) = qualifier out of range (m) = manual integration (+) = signals summed

Data Path : Z:\voasrv\HPCHEM1\MSVOA\_X\Data\VX120825\  
 Data File : VX048756.D  
 Acq On : 08 Dec 2025 15:38  
 Operator : JC/MD  
 Sample : Q3787-15  
 Misc : 5.0mL/MSVOA\_X/WATER  
 ALS Vial : 16 Sample Multiplier: 1

Instrument :  
 MSVOA\_X  
 ClientSampleId :  
 OW-08B-72.5-120425

Quant Time: Dec 09 04:11:58 2025  
 Quant Method : Z:\voasrv\HPCHEM1\MSVOA\_X\Method\82X120425W.M  
 Quant Title : SW846 8260  
 QLast Update : Fri Dec 05 03:27:34 2025  
 Response via : Initial Calibration

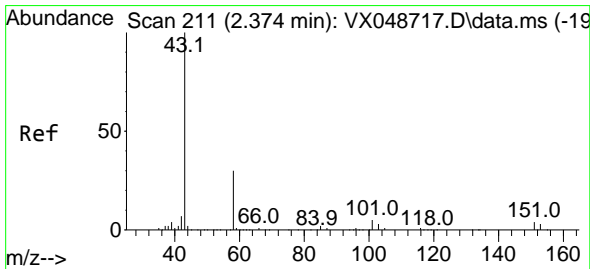
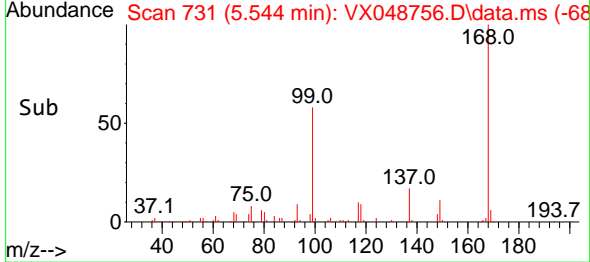
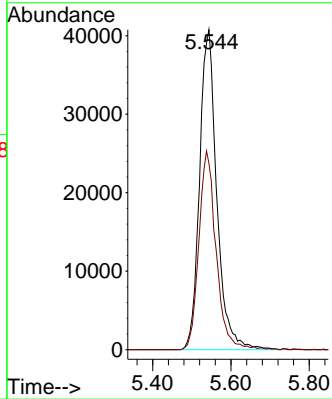
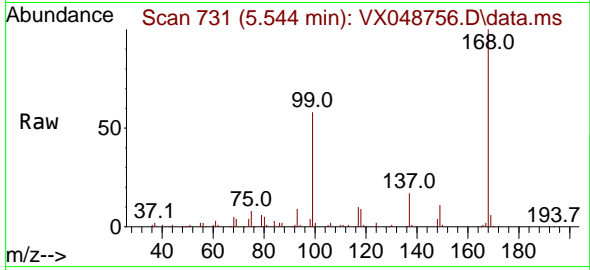




#1  
 Pentafluorobenzene  
 Concen: 50.000 ug/l  
 RT: 5.544 min Scan# 71  
 Delta R.T. 0.006 min  
 Lab File: VX048756.D  
 Acq: 08 Dec 2025 15:38

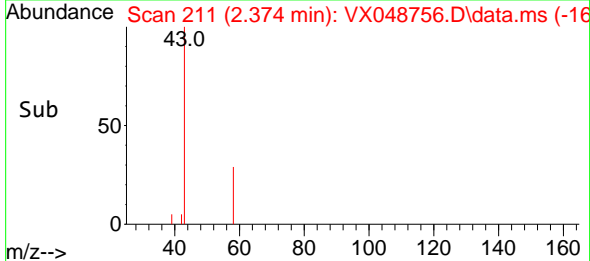
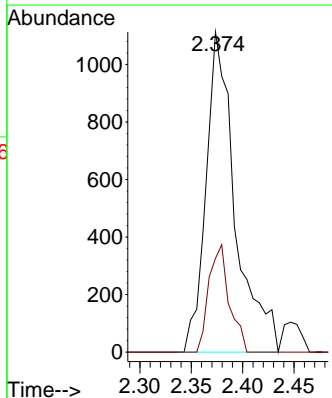
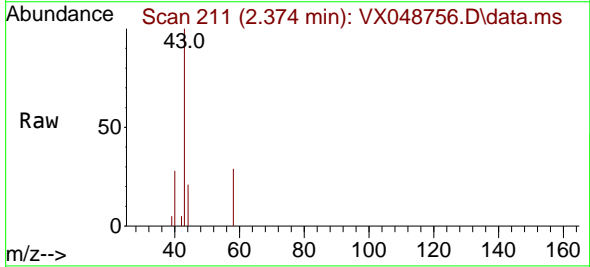
Instrument : MSVOA\_X  
 ClientSampleId : OW-08B-72.5-120425

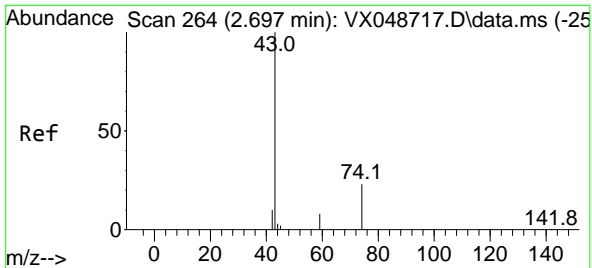
Tgt Ion:168 Resp: 124545  
 Ion Ratio Lower Upper  
 168 100  
 99 58.2 44.2 66.4



#16  
 Acetone  
 Concen: 3.444 ug/l  
 RT: 2.374 min Scan# 211  
 Delta R.T. -0.000 min  
 Lab File: VX048756.D  
 Acq: 08 Dec 2025 15:38

Tgt Ion: 43 Resp: 2204  
 Ion Ratio Lower Upper  
 43 100  
 58 29.3 25.0 37.4

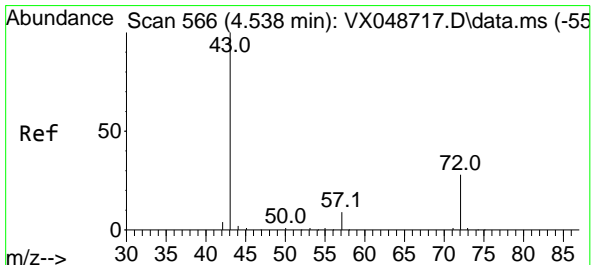
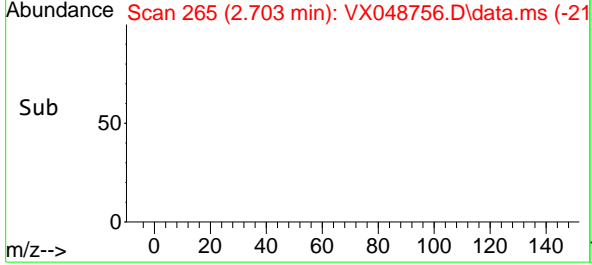
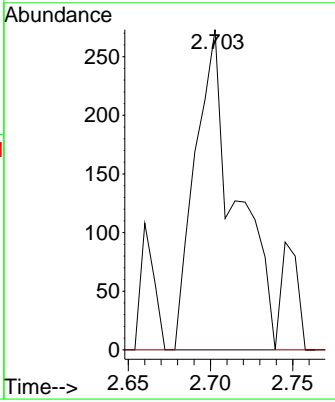
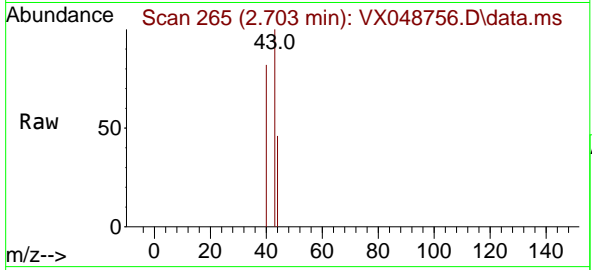




#18  
 Methyl Acetate  
 Concen: 0.264 ug/l  
 RT: 2.703 min Scan# 20  
 Delta R.T. 0.006 min  
 Lab File: VX048756.D  
 Acq: 08 Dec 2025 15:38

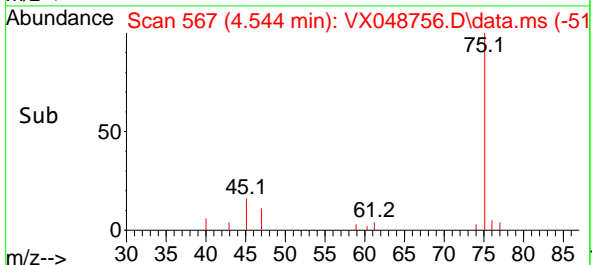
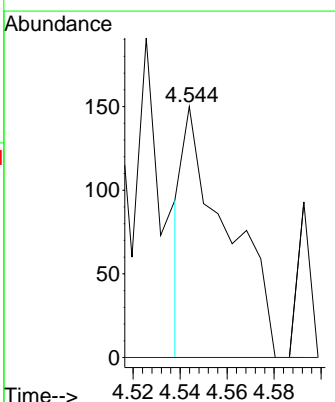
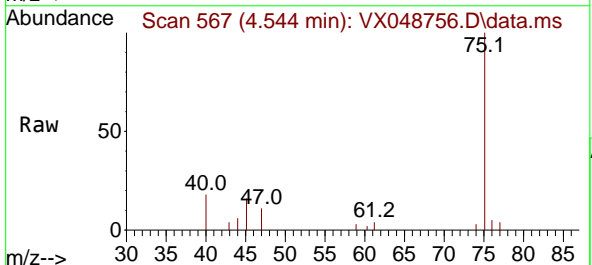
Instrument : MSVOA\_X  
 ClientSampleId : OW-08B-72.5-120425

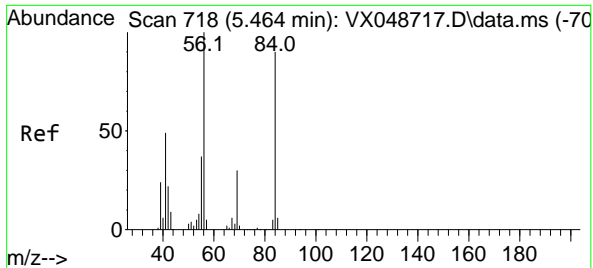
Tgt Ion	Resp	Lower	Upper
43	100		
74	0.0	19.2	28.8#



#25  
 2-Butanone  
 Concen: 0.205 ug/l  
 RT: 4.544 min Scan# 567  
 Delta R.T. 0.006 min  
 Lab File: VX048756.D  
 Acq: 08 Dec 2025 15:38

Tgt Ion	Resp	Lower	Upper
43	100		
72	0.0	22.6	34.0#



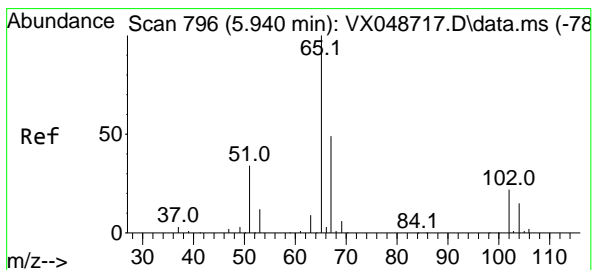
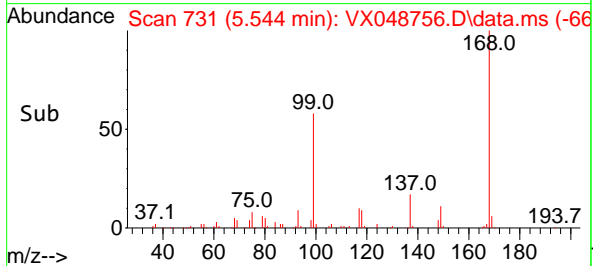
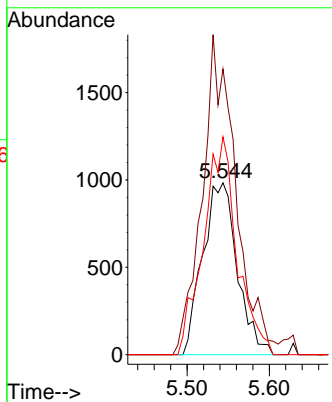
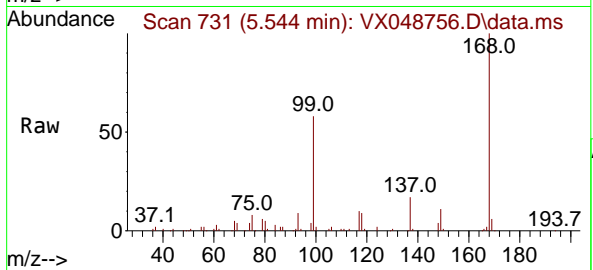


#31  
 Cyclohexane  
 Concen: 1.273 ug/l  
 RT: 5.544 min Scan# 718  
 Delta R.T. 0.079 min  
 Lab File: VX048756.D  
 Acq: 08 Dec 2025 15:38

Instrument : MSVOA\_X  
 ClientSampleId : OW-08B-72.5-120425

Tgt Ion: 56 Resp: 2877

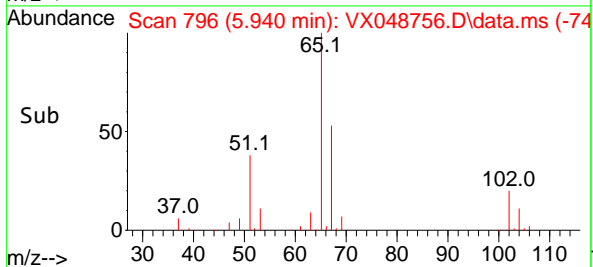
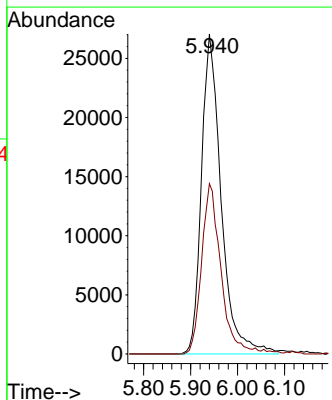
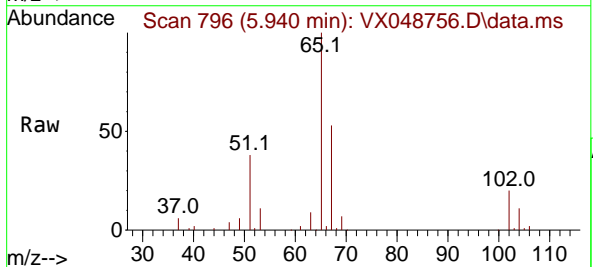
Ion	Ratio	Lower	Upper
56	100		
69	160.5	24.2	36.2#
84	126.7	72.1	108.1#

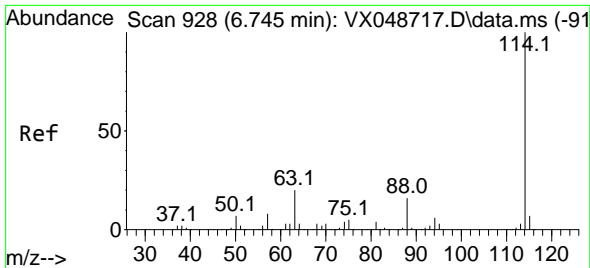


#33  
 1,2-Dichloroethane-d4  
 Concen: 47.108 ug/l  
 RT: 5.940 min Scan# 796  
 Delta R.T. -0.000 min  
 Lab File: VX048756.D  
 Acq: 08 Dec 2025 15:38

Tgt Ion: 65 Resp: 78747

Ion	Ratio	Lower	Upper
65	100		
67	51.8	0.0	107.4



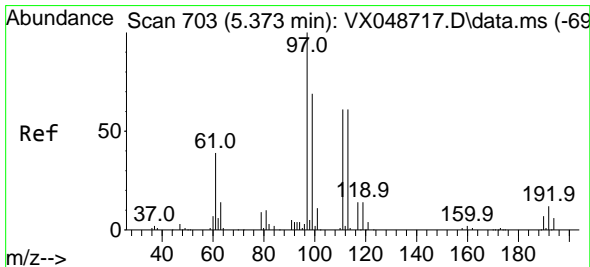
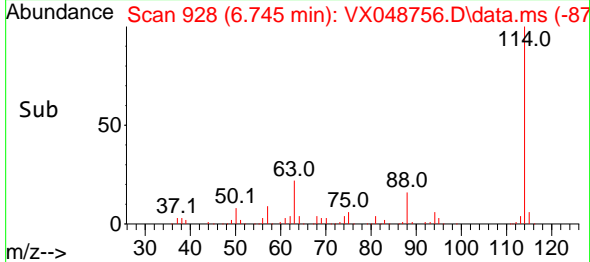
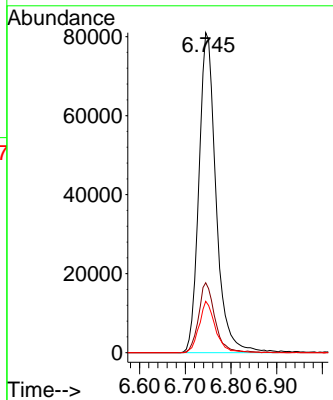
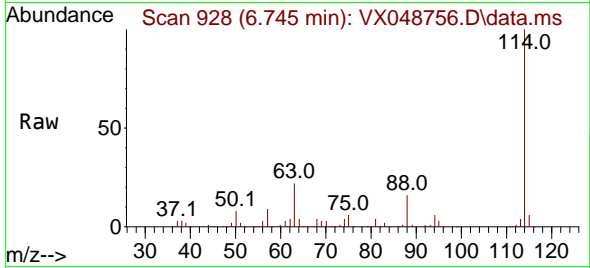


#34  
 1,4-Difluorobenzene  
 Concen: 50.000 ug/l  
 RT: 6.745 min Scan# 91  
 Delta R.T. -0.000 min  
 Lab File: VX048756.D  
 Acq: 08 Dec 2025 15:38

Instrument : MSVOA\_X  
 ClientSampleId : OW-08B-72.5-120425

Tgt Ion:114 Resp: 210799

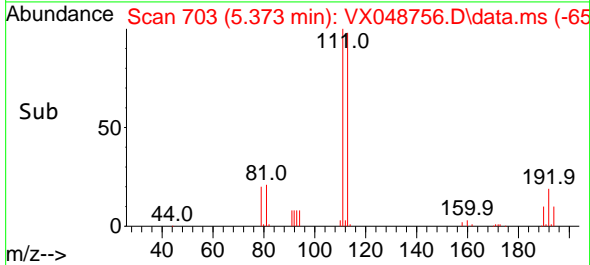
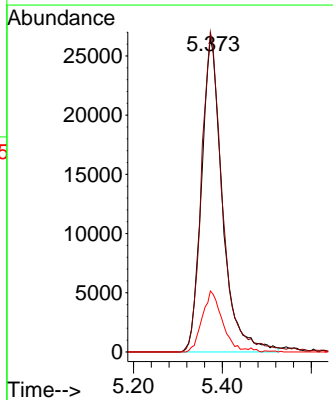
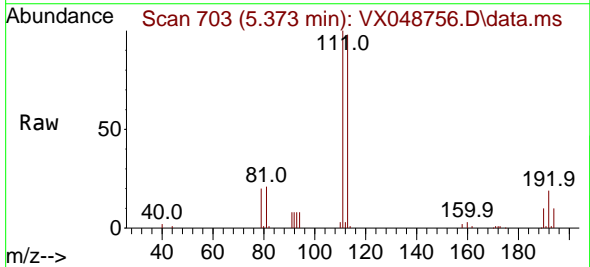
Ion	Ratio	Lower	Upper
114	100		
63	21.8	0.0	39.0
88	16.0	0.0	31.8

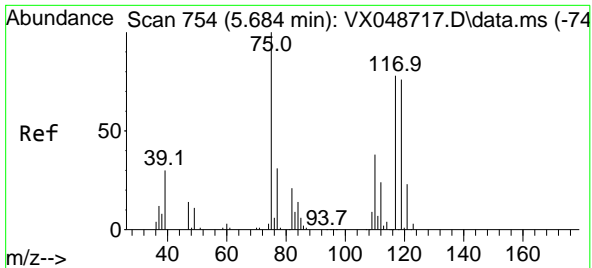


#35  
 Dibromofluoromethane  
 Concen: 59.769 ug/l  
 RT: 5.373 min Scan# 703  
 Delta R.T. -0.000 min  
 Lab File: VX048756.D  
 Acq: 08 Dec 2025 15:38

Tgt Ion:113 Resp: 86750

Ion	Ratio	Lower	Upper
113	100		
111	101.6	79.5	119.3
192	18.4	16.1	24.1

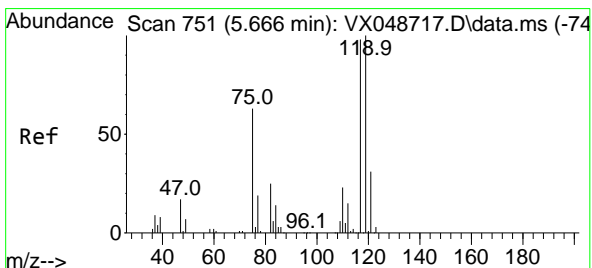
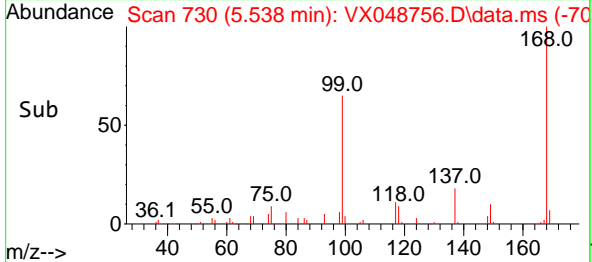
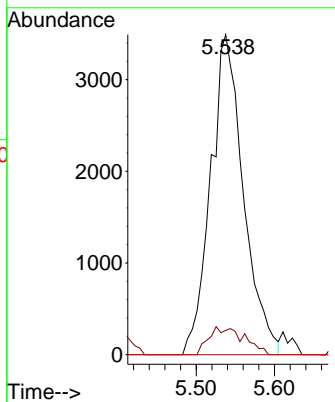
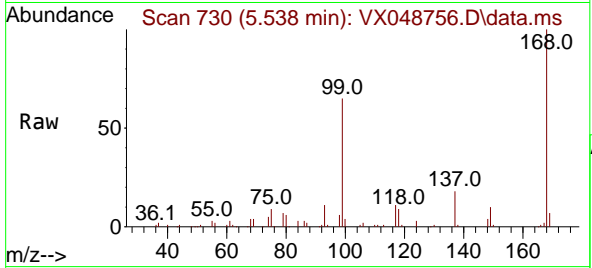




#36  
 1,1-Dichloropropene  
 Concen: 5.113 ug/l  
 RT: 5.538 min Scan# 711  
 Delta R.T. -0.146 min  
 Lab File: VX048756.D  
 Acq: 08 Dec 2025 15:38

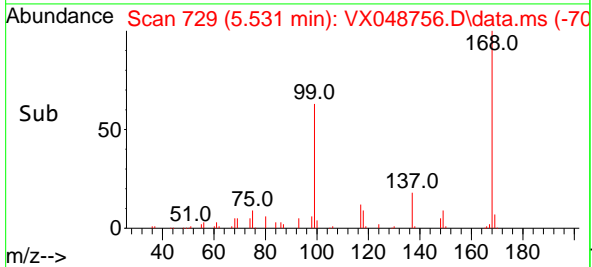
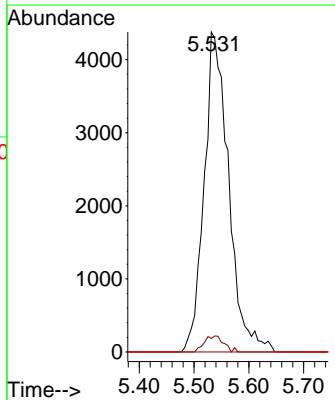
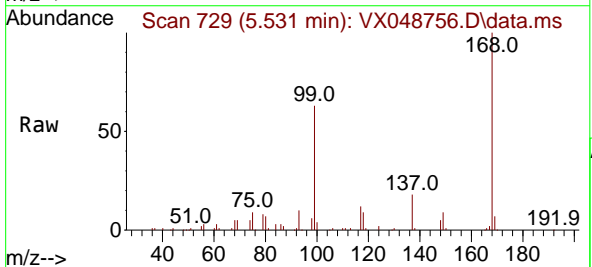
Instrument : MSVOA\_X  
 ClientSampleId : OW-08B-72.5-120425

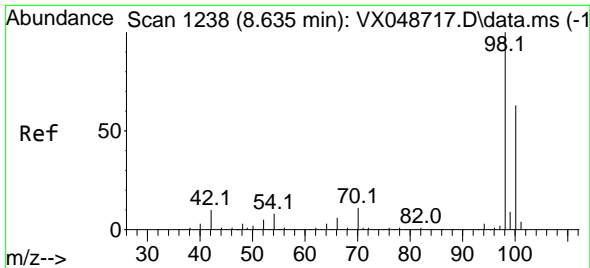
Tgt Ion	Resp	Lower	Upper
75	10164		
110	9.3	18.6	55.8#
77	0.0	25.3	37.9#



#38  
 Carbon Tetrachloride  
 Concen: 6.044 ug/l  
 RT: 5.531 min Scan# 729  
 Delta R.T. -0.134 min  
 Lab File: VX048756.D  
 Acq: 08 Dec 2025 15:38

Tgt Ion	Resp	Lower	Upper
117	13609		
119	4.2	80.5	120.7#
121	0.0	25.4	38.0#

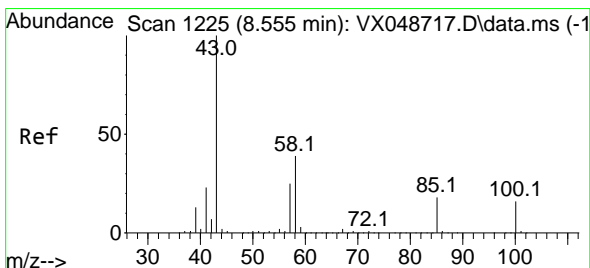
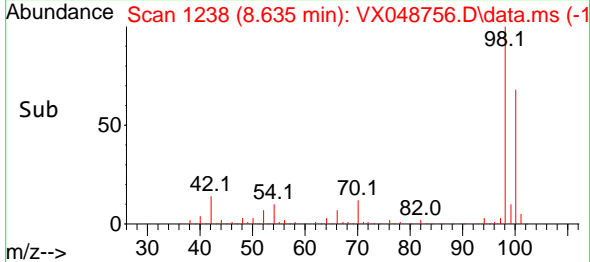
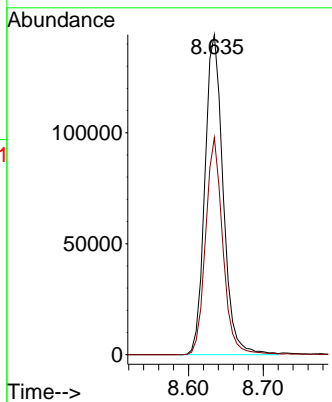
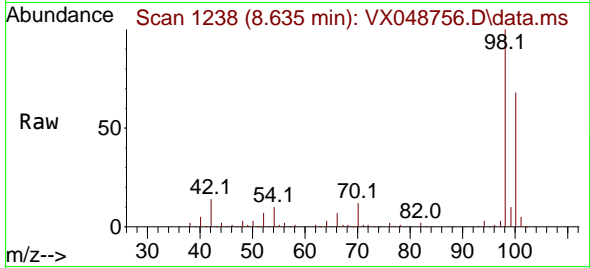




#50  
 Toluene-d8  
 Concen: 47.982 ug/l  
 RT: 8.635 min Scan# 1238  
 Delta R.T. -0.000 min  
 Lab File: VX048756.D  
 Acq: 08 Dec 2025 15:38

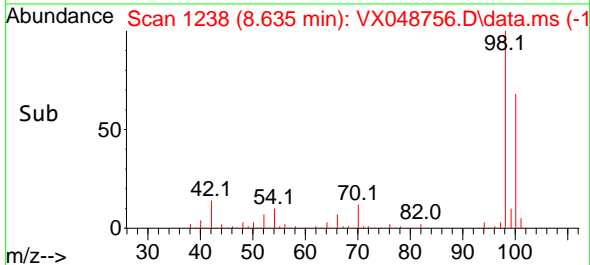
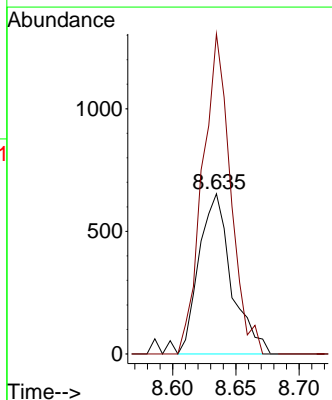
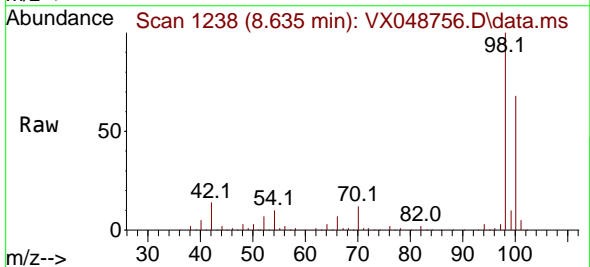
Instrument : MSVOA\_X  
 ClientSampleId : OW-08B-72.5-120425

Tgt Ion: 98 Resp: 244119  
 Ion Ratio Lower Upper  
 98 100  
 100 64.5 53.4 80.0

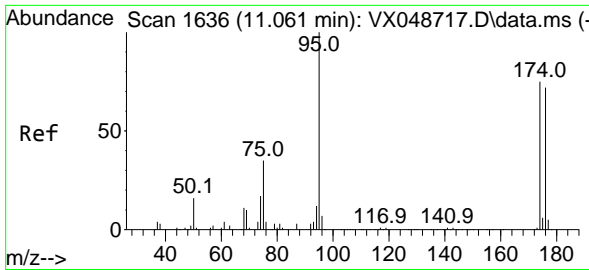


#51  
 4-Methyl-2-Pentanone  
 Concen: 0.523 ug/l  
 RT: 8.635 min Scan# 1238  
 Delta R.T. 0.079 min  
 Lab File: VX048756.D  
 Acq: 08 Dec 2025 15:38

Tgt Ion: 43 Resp: 1167  
 Ion Ratio Lower Upper  
 43 100  
 58 172.9 32.2 48.4#

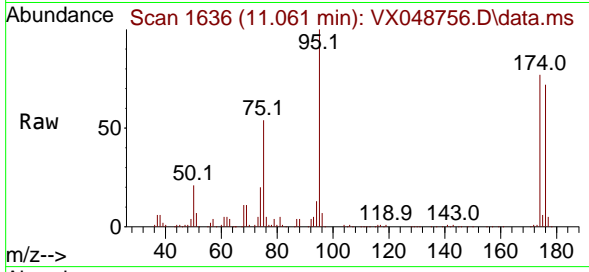




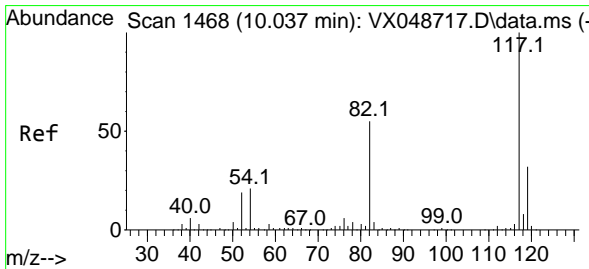
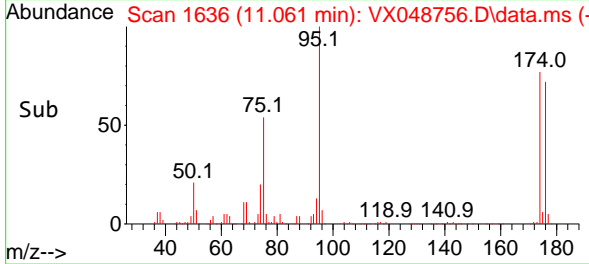
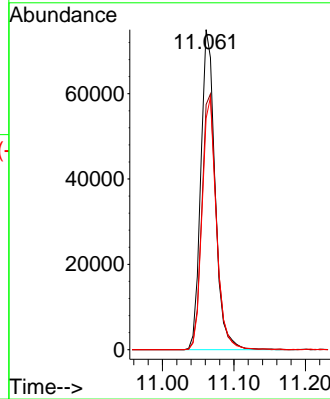


#62  
 4-Bromofluorobenzene  
 Concen: 58.989 ug/l  
 RT: 11.061 min Scan# 11  
 Delta R.T. -0.000 min  
 Lab File: VX048756.D  
 Acq: 08 Dec 2025 15:38

Instrument : MSVOA\_X  
 ClientSampleId : OW-08B-72.5-120425

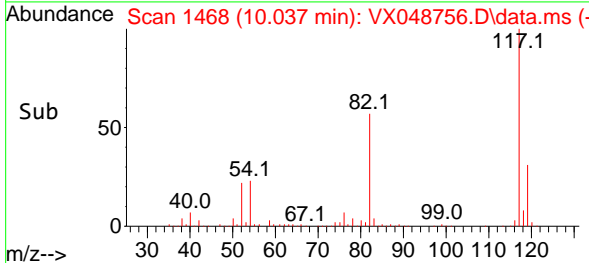
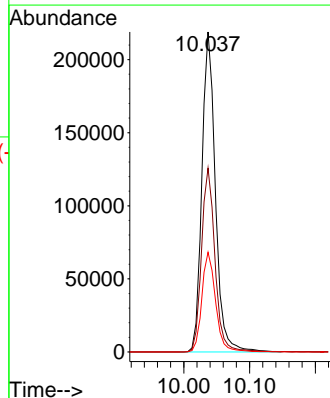
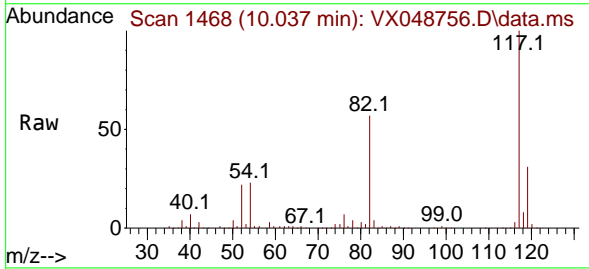


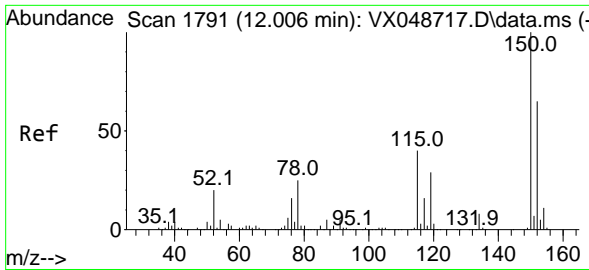
Tgt Ion: 95 Resp: 103491  
 Ion Ratio Lower Upper  
 95 100  
 174 82.3 0.0 157.8  
 176 79.5 0.0 154.0



#63  
 Chlorobenzene-d5  
 Concen: 50.000 ug/l  
 RT: 10.037 min Scan# 1468  
 Delta R.T. -0.000 min  
 Lab File: VX048756.D  
 Acq: 08 Dec 2025 15:38

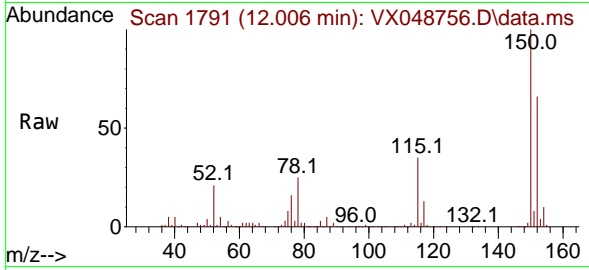
Tgt Ion: 117 Resp: 312315  
 Ion Ratio Lower Upper  
 117 100  
 82 57.5 44.1 66.1  
 119 31.2 25.2 37.8



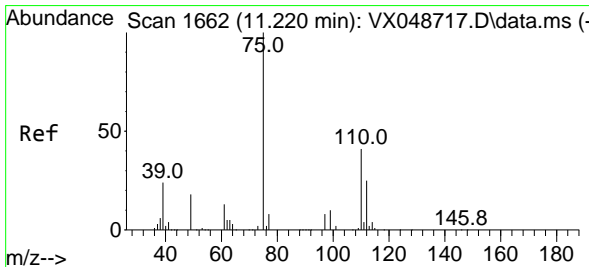
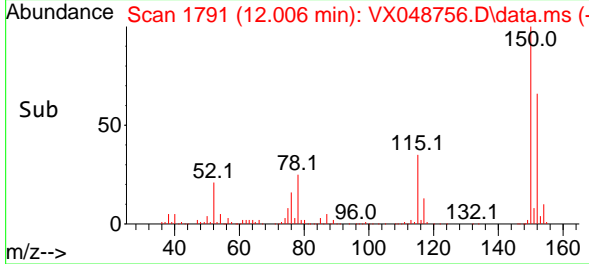
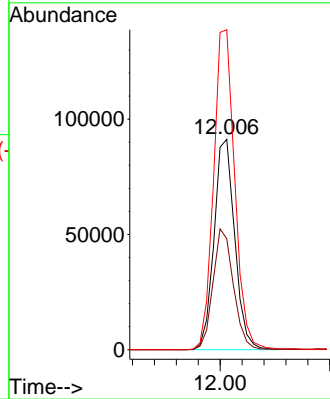


#72  
 1,4-Dichlorobenzene-d4  
 Concen: 50.000 ug/l  
 RT: 12.006 min Scan# 11  
 Delta R.T. -0.000 min  
 Lab File: VX048756.D  
 Acq: 08 Dec 2025 15:38

Instrument : MSVOA\_X  
 ClientSampleId : OW-08B-72.5-120425

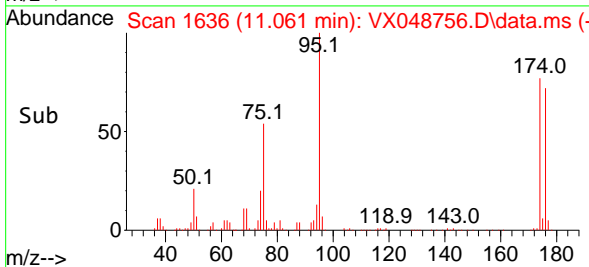
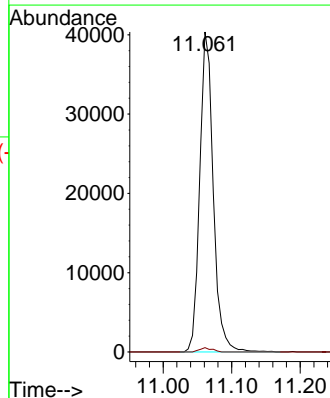
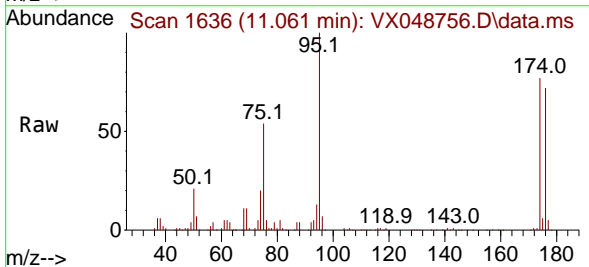


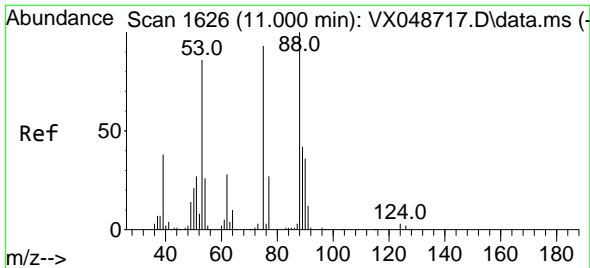
Tgt Ion:152 Resp: 119855  
 Ion Ratio Lower Upper  
 152 100  
 115 56.9 42.1 126.4  
 150 155.6 0.0 347.8



#76  
 1,2,3-Trichloropropane  
 Concen: 24.879 ug/l  
 RT: 11.061 min Scan# 1636  
 Delta R.T. -0.159 min  
 Lab File: VX048756.D  
 Acq: 08 Dec 2025 15:38

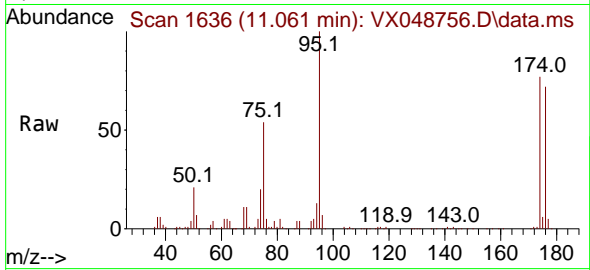
Tgt Ion: 75 Resp: 55538  
 Ion Ratio Lower Upper  
 75 100  
 77 1.2 24.3 73.0#



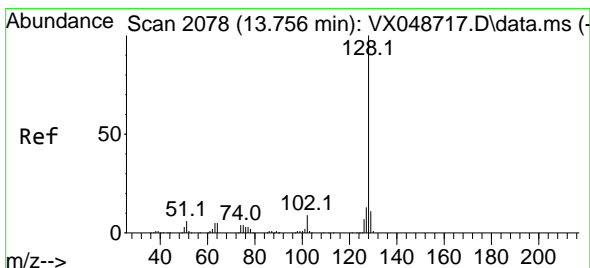
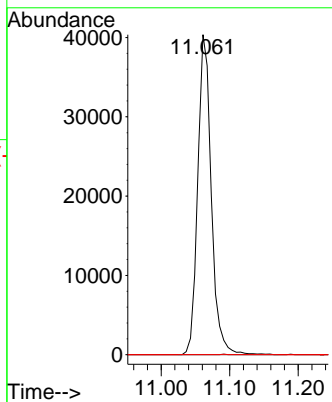
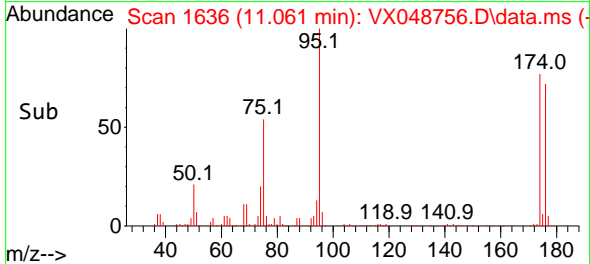


#81  
 trans-1,4-Dichloro-2-butene  
 Concen: 59.097 ug/l  
 RT: 11.061 min Scan# 1  
 Delta R.T. 0.061 min  
 Lab File: VX048756.D  
 Acq: 08 Dec 2025 15:38

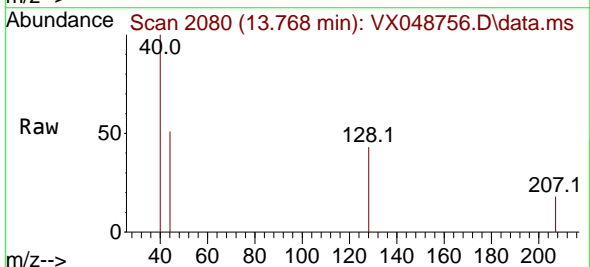
Instrument : MSVOA\_X  
 ClientSampleId : OW-08B-72.5-120425



Tgt Ion: 75 Resp: 55538  
 Ion Ratio Lower Upper  
 75 100  
 53 0.0 79.9 119.9#  
 89 0.0 67.1 100.7#



#95  
 Naphthalene  
 Concen: Below Cal  
 RT: 13.768 min Scan# 2080  
 Delta R.T. 0.012 min  
 Lab File: VX048756.D  
 Acq: 08 Dec 2025 15:38



Tgt Ion:128 Resp: 114  
 Ion Ratio Lower Upper  
 128 100  
 127 0.0 10.2 15.2#  
 129 0.0 8.6 13.0#

