

Data Path : Z:\voasrv\HPCHEM1\MSVOA_X\Data\VX120825\
 Data File : VX048757.D
 Acq On : 08 Dec 2025 15:59
 Operator : JC/MD
 Sample : Q3787-17
 Misc : 5.0mL/MSVOA_X/WATER
 ALS Vial : 17 Sample Multiplier: 1

Instrument :
 MSVOA_X
 ClientSampleId :
 OW-08B-72.5-120425-FD

Quant Time: Dec 09 04:12:18 2025
 Quant Method : Z:\voasrv\HPCHEM1\MSVOA_X\Method\82X120425W.M
 Quant Title : SW846 8260
 QLast Update : Fri Dec 05 03:27:34 2025
 Response via : Initial Calibration

Compound	R.T.	QIon	Response	Conc	Units	Dev(Min)

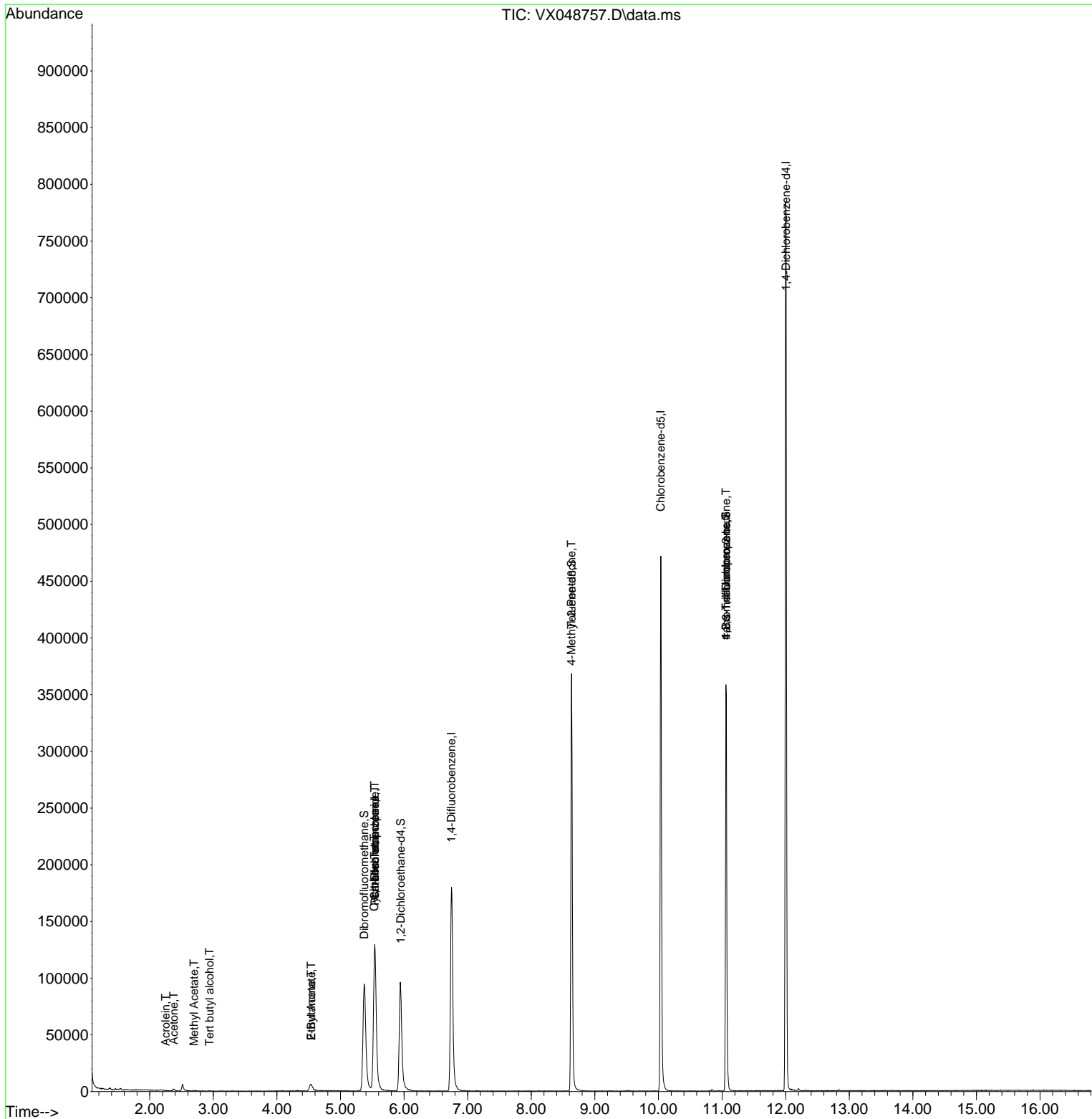
Internal Standards						
1) Pentafluorobenzene	5.544	168	127845	50.000	ug/l	0.00
34) 1,4-Difluorobenzene	6.745	114	199202	50.000	ug/l	0.00
63) Chlorobenzene-d5	10.037	117	216738	50.000	ug/l	0.00
72) 1,4-Dichlorobenzene-d4	12.006	152	171945	50.000	ug/l	0.00
System Monitoring Compounds						
33) 1,2-Dichloroethane-d4	5.946	65	103994	60.606	ug/l	0.00
Spiked Amount	50.000	Range 78 - 117	Recovery	=	121.220%#	
35) Dibromofluoromethane	5.373	113	93556	68.210	ug/l	0.00
Spiked Amount	50.000	Range 75 - 124	Recovery	=	136.420%#	
50) Toluene-d8	8.634	98	228610	47.550	ug/l	0.00
Spiked Amount	50.000	Range 92 - 112	Recovery	=	95.100%	
62) 4-Bromofluorobenzene	11.061	95	97752	58.962	ug/l	0.00
Spiked Amount	50.000	Range 83 - 123	Recovery	=	117.920%	
Target Compounds						
						Qvalue
11) Tert butyl alcohol	2.940	59	112	0.404	ug/l #	73
13) Acrolein	2.251	56	20	40.240	ug/l #	15
16) Acetone	2.380	43	2240	3.410	ug/l #	82
18) Methyl Acetate	2.697	43	521	0.282	ug/l #	87
25) 2-Butanone	4.538	43	503	0.519	ug/l #	46
31) Cyclohexane	5.531	56	3067	1.322	ug/l #	26
36) 1,1-Dichloropropene	5.537	75	11138	5.929	ug/l #	44
37) Ethyl Acetate	4.538	43	503	0.224	ug/l #	31
38) Carbon Tetrachloride	5.537	117	13579	6.381	ug/l #	12
51) 4-Methyl-2-Pentanone	8.628	43	1174	0.556	ug/l #	1
76) 1,2,3-Trichloropropane	11.061	75	51528	16.090	ug/l #	30
81) trans-1,4-Dichloro-2-b...	11.061	75	51528	38.220	ug/l #	3
95) Naphthalene	13.768	128	111	Below Cal	#	69

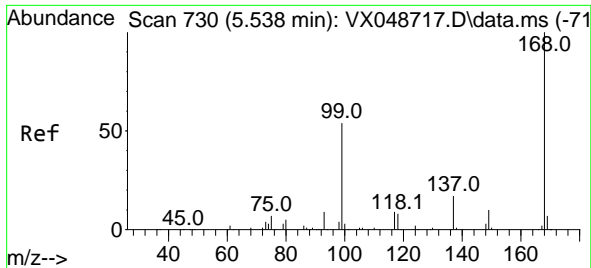
(#) = qualifier out of range (m) = manual integration (+) = signals summed

Data Path : Z:\voasrv\HPCHEM1\MSVOA_X\Data\VX120825\
 Data File : VX048757.D
 Acq On : 08 Dec 2025 15:59
 Operator : JC/MD
 Sample : Q3787-17
 Misc : 5.0mL/MSVOA_X/WATER
 ALS Vial : 17 Sample Multiplier: 1

Instrument :
 MSVOA_X
 ClientSampleId :
 OW-08B-72.5-120425-FD

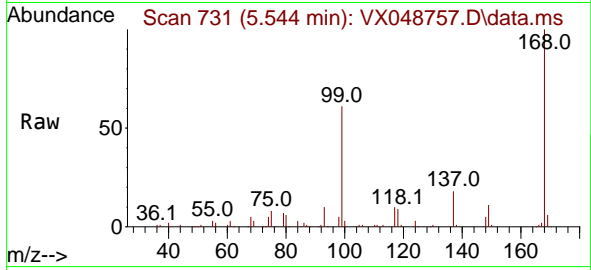
Quant Time: Dec 09 04:12:18 2025
 Quant Method : Z:\voasrv\HPCHEM1\MSVOA_X\Method\82X120425W.M
 Quant Title : SW846 8260
 QLast Update : Fri Dec 05 03:27:34 2025
 Response via : Initial Calibration



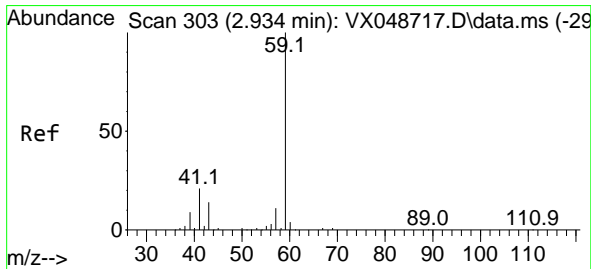
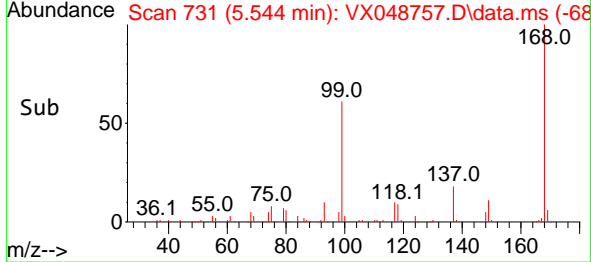
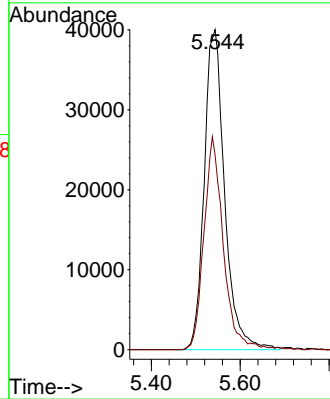


#1
 Pentafluorobenzene
 Concen: 50.000 ug/l
 RT: 5.544 min Scan# 71
 Delta R.T. 0.006 min
 Lab File: VX048757.D
 Acq: 08 Dec 2025 15:59

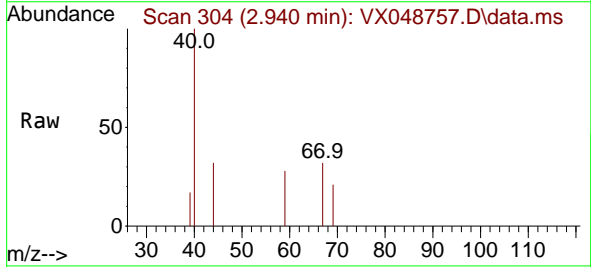
Instrument : MSVOA_X
 ClientSampleId : OW-08B-72.5-120425-FD



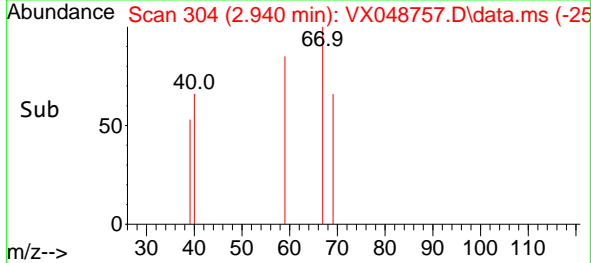
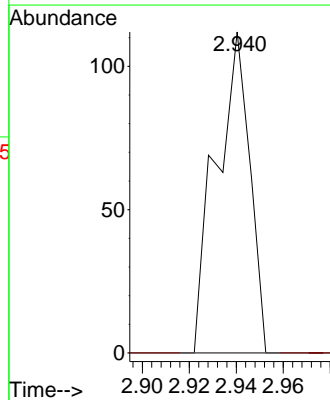
Tgt Ion:168 Resp: 127845
 Ion Ratio Lower Upper
 168 100
 99 60.9 44.2 66.4

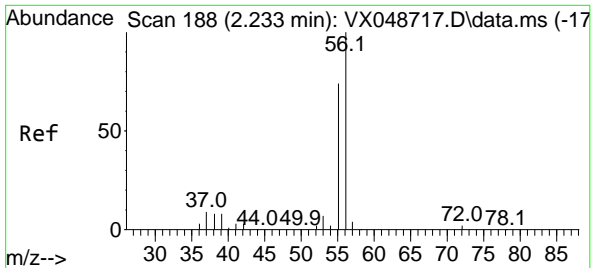


#11
 Tert butyl alcohol
 Concen: 0.404 ug/l
 RT: 2.940 min Scan# 304
 Delta R.T. 0.006 min
 Lab File: VX048757.D
 Acq: 08 Dec 2025 15:59



Tgt Ion: 59 Resp: 112
 Ion Ratio Lower Upper
 59 100
 57 0.0 8.1 12.1#

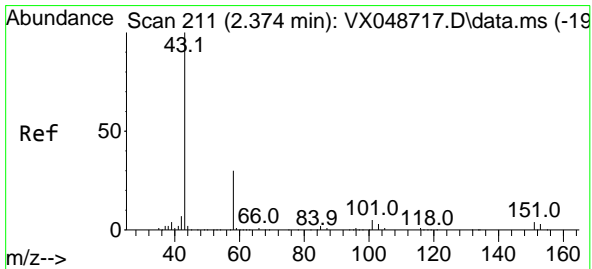
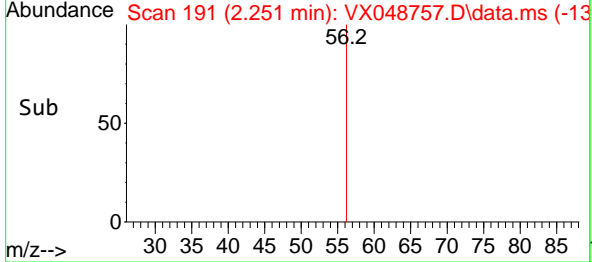
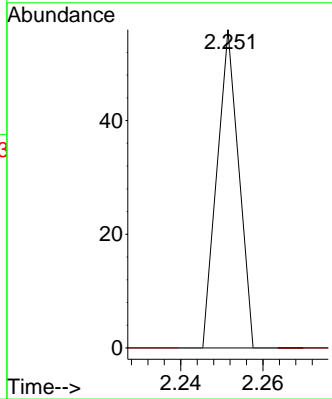
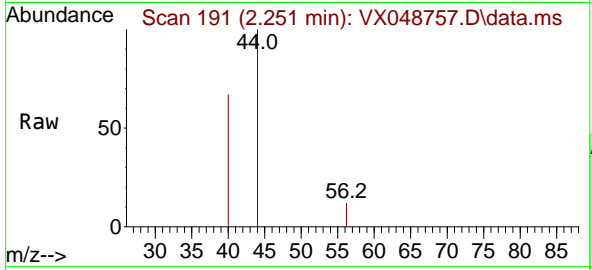




#13
 Acrolein
 Concen: 40.240 ug/l
 RT: 2.251 min Scan# 191
 Delta R.T. 0.018 min
 Lab File: VX048757.D
 Acq: 08 Dec 2025 15:59

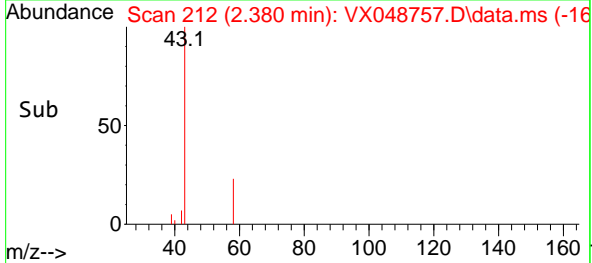
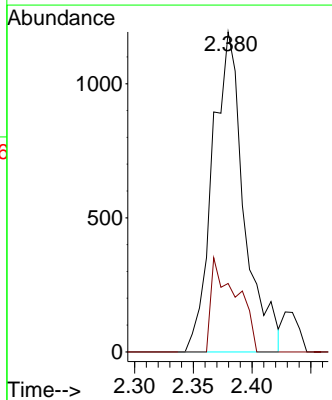
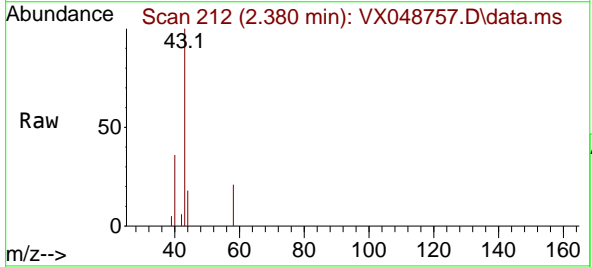
Instrument : MSVOA_X
 ClientSampleId : OW-08B-72.5-120425-FD

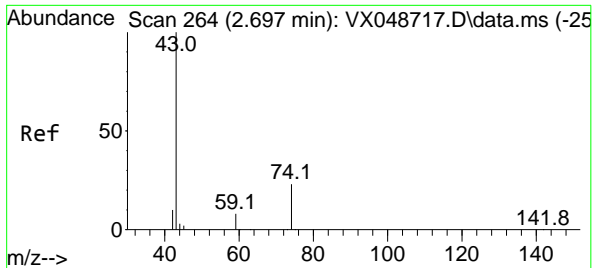
Tgt Ion: 56 Resp: 20
 Ion Ratio Lower Upper
 56 100
 55 0.0 55.8 83.6#



#16
 Acetone
 Concen: 3.410 ug/l
 RT: 2.380 min Scan# 212
 Delta R.T. 0.006 min
 Lab File: VX048757.D
 Acq: 08 Dec 2025 15:59

Tgt Ion: 43 Resp: 2240
 Ion Ratio Lower Upper
 43 100
 58 21.4 25.0 37.4#

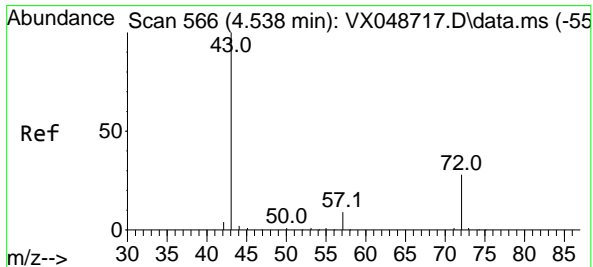
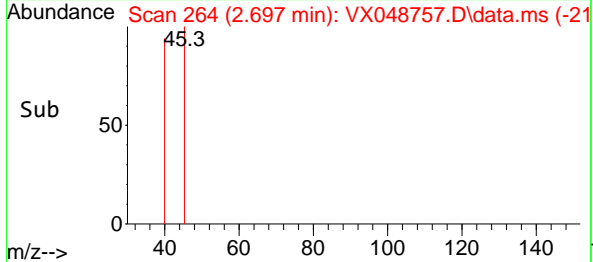
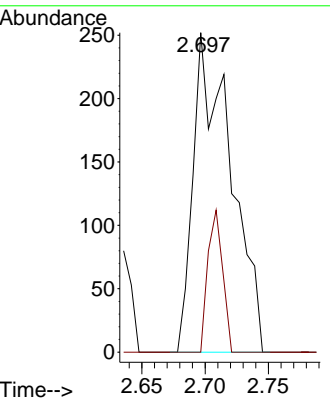
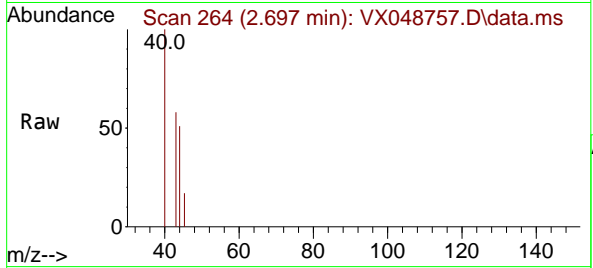




#18
 Methyl Acetate
 Concen: 0.282 ug/l
 RT: 2.697 min Scan# 20
 Delta R.T. -0.000 min
 Lab File: VX048757.D
 Acq: 08 Dec 2025 15:59

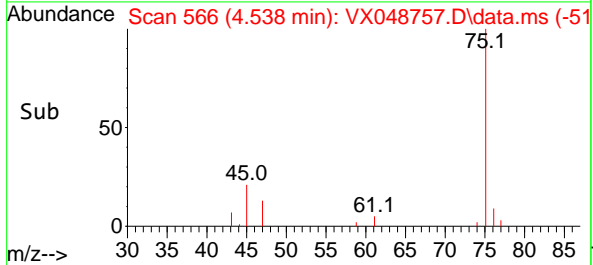
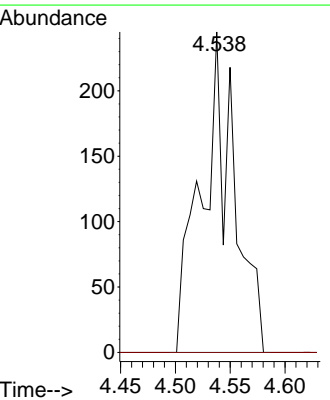
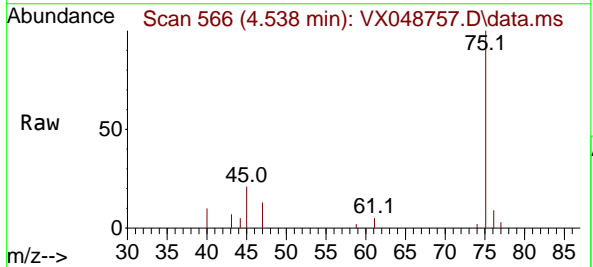
Instrument : MSVOA_X
 ClientSampleId : OW-08B-72.5-120425-FD

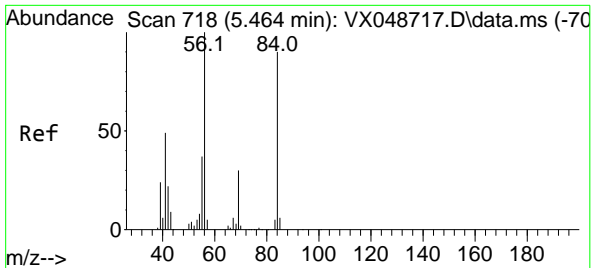
Tgt Ion: 43 Resp: 521
 Ion Ratio Lower Upper
 43 100
 74 17.5 19.2 28.8#



#25
 2-Butanone
 Concen: 0.519 ug/l
 RT: 4.538 min Scan# 566
 Delta R.T. -0.000 min
 Lab File: VX048757.D
 Acq: 08 Dec 2025 15:59

Tgt Ion: 43 Resp: 503
 Ion Ratio Lower Upper
 43 100
 72 0.0 22.6 34.0#



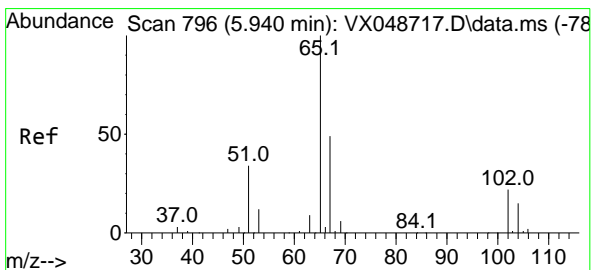
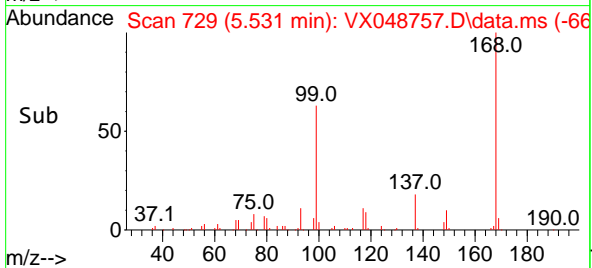
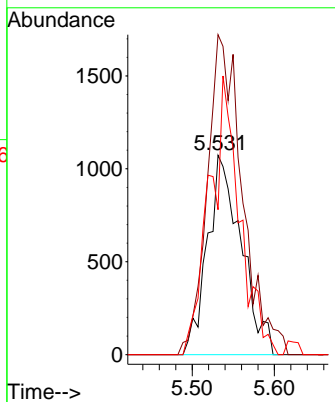
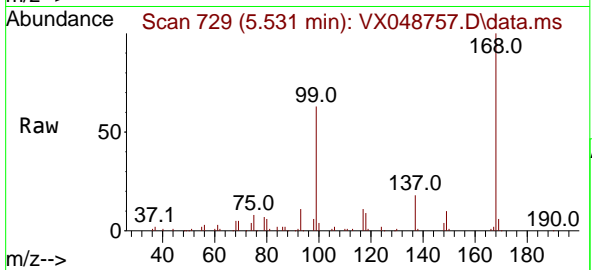


#31
 Cyclohexane
 Concen: 1.322 ug/l
 RT: 5.531 min Scan# 718
 Delta R.T. 0.067 min
 Lab File: VX048757.D
 Acq: 08 Dec 2025 15:59

Instrument : MSVOA_X
 ClientSampleId : OW-08B-72.5-120425-FD

Tgt Ion: 56 Resp: 3067

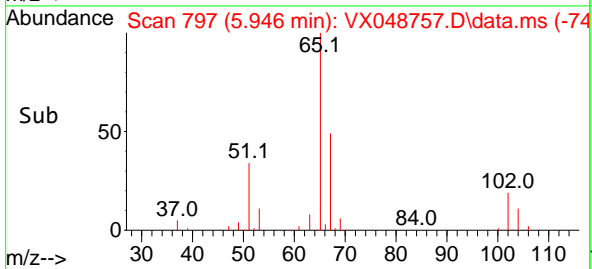
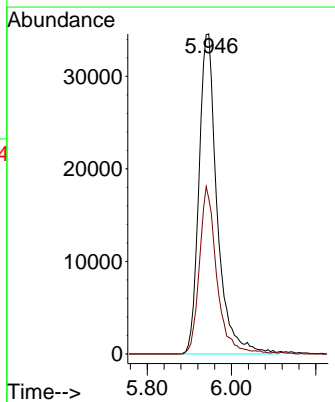
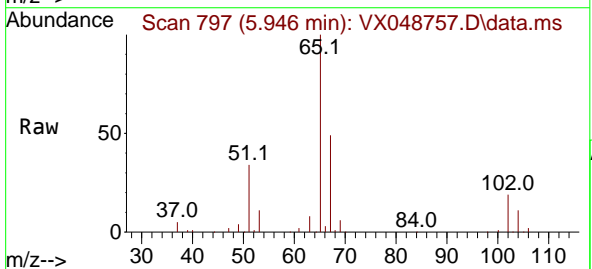
Ion	Ratio	Lower	Upper
56	100		
69	160.5	24.2	36.2#
84	72.7	72.1	108.1

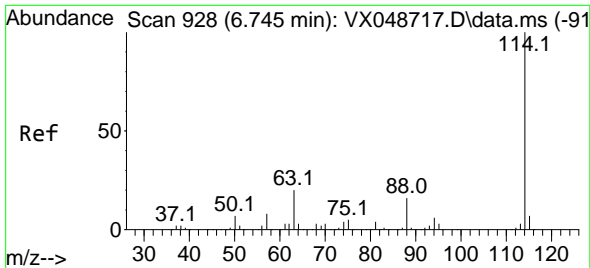


#33
 1,2-Dichloroethane-d4
 Concen: 60.606 ug/l
 RT: 5.946 min Scan# 797
 Delta R.T. 0.006 min
 Lab File: VX048757.D
 Acq: 08 Dec 2025 15:59

Tgt Ion: 65 Resp: 103994

Ion	Ratio	Lower	Upper
65	100		
67	50.0	0.0	107.4

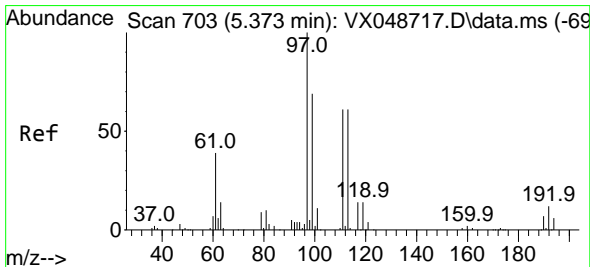
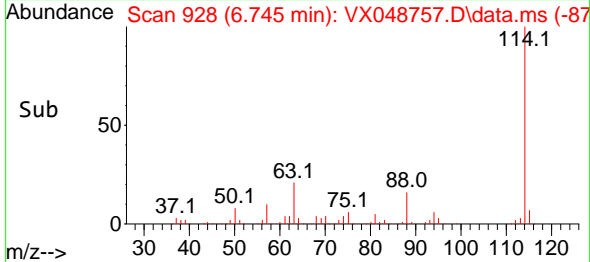
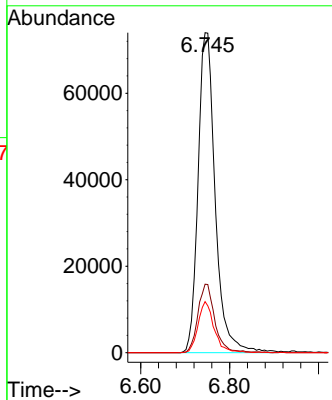
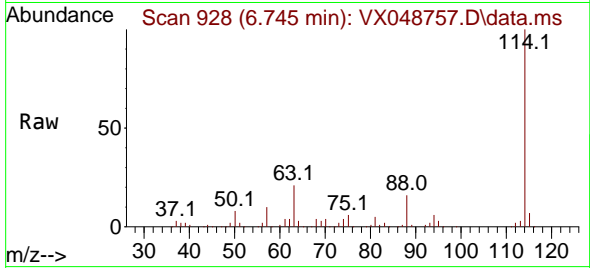




#34
 1,4-Difluorobenzene
 Concen: 50.000 ug/l
 RT: 6.745 min Scan# 91
 Delta R.T. -0.000 min
 Lab File: VX048757.D
 Acq: 08 Dec 2025 15:59

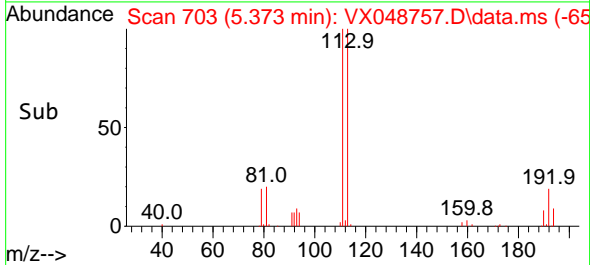
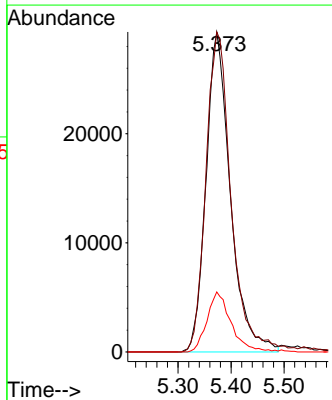
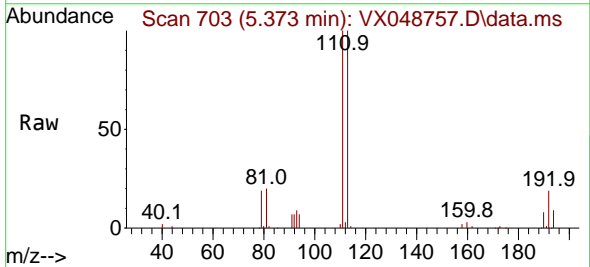
Instrument : MSVOA_X
 ClientSampleId : OW-08B-72.5-120425-FD

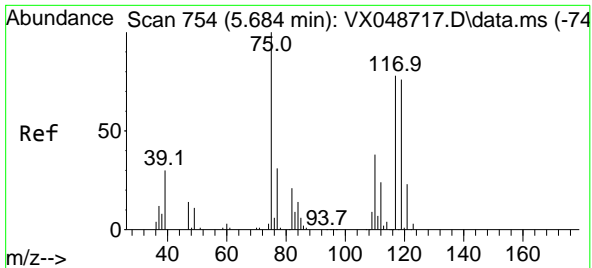
Tgt Ion	Resp	Lower	Upper
114	19202		
63	21.4	0.0	39.0
88	16.0	0.0	31.8



#35
 Dibromofluoromethane
 Concen: 68.210 ug/l
 RT: 5.373 min Scan# 703
 Delta R.T. -0.000 min
 Lab File: VX048757.D
 Acq: 08 Dec 2025 15:59

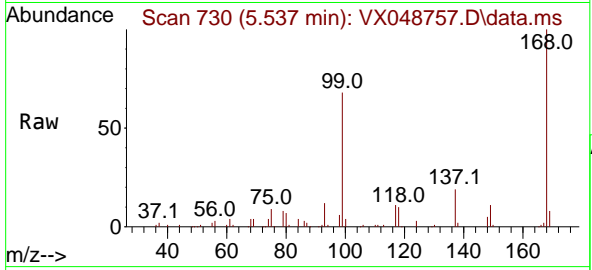
Tgt Ion	Resp	Lower	Upper
113	93556		
111	103.7	79.5	119.3
192	18.5	16.1	24.1





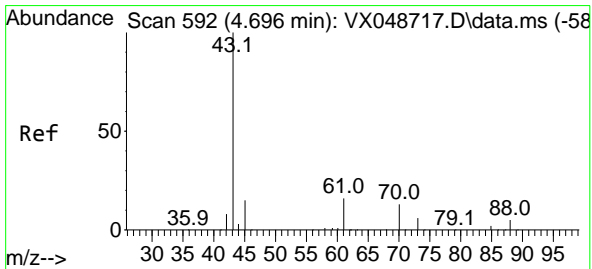
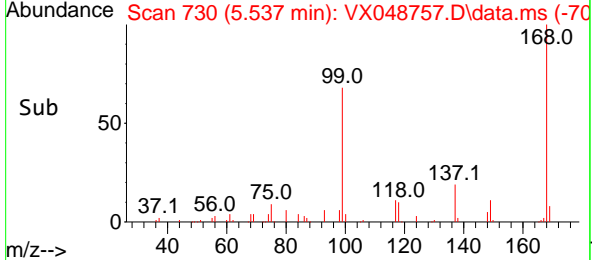
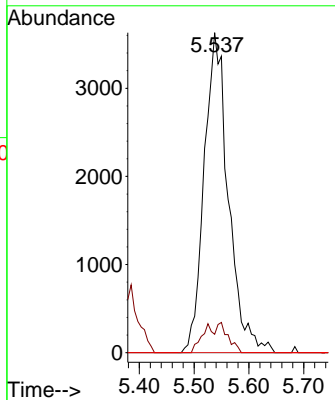
#36
 1,1-Dichloropropene
 Concen: 5.929 ug/l
 RT: 5.537 min Scan# 711
 Delta R.T. -0.146 min
 Lab File: VX048757.D
 Acq: 08 Dec 2025 15:59

Instrument : MSVOA_X
 ClientSampleId : OW-08B-72.5-120425-FD



Tgt Ion: 75 Resp: 11138

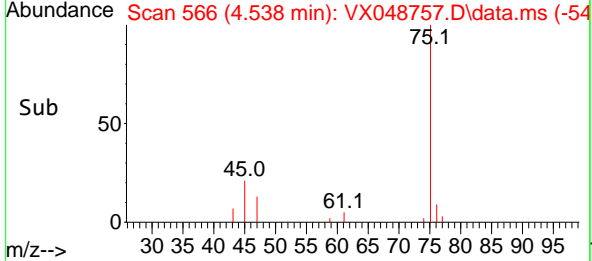
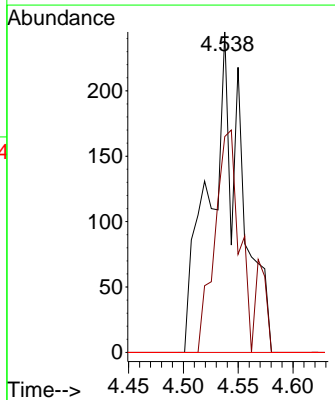
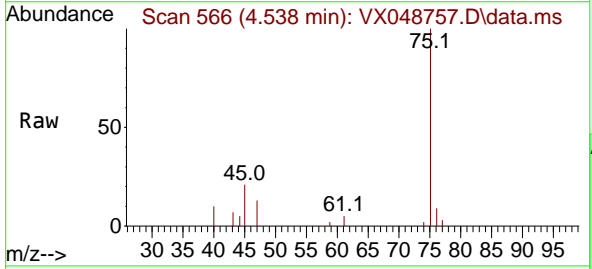
Ion	Ratio	Lower	Upper
75	100		
110	4.4	18.6	55.8#
77	0.0	25.3	37.9#

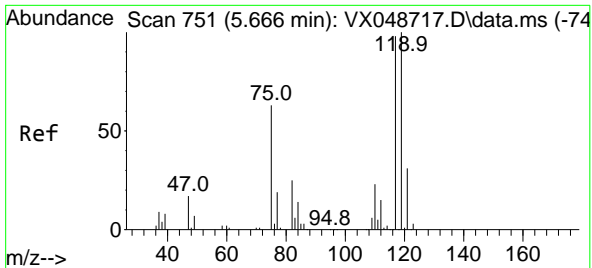


#37
 Ethyl Acetate
 Concen: 0.224 ug/l
 RT: 4.538 min Scan# 566
 Delta R.T. -0.159 min
 Lab File: VX048757.D
 Acq: 08 Dec 2025 15:59

Tgt Ion: 43 Resp: 503

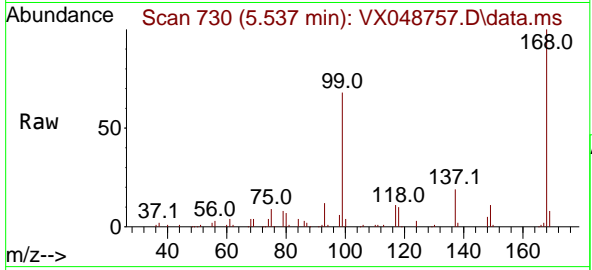
Ion	Ratio	Lower	Upper
43	100		
61	52.5	9.7	14.5#
70	0.0	8.2	12.4#



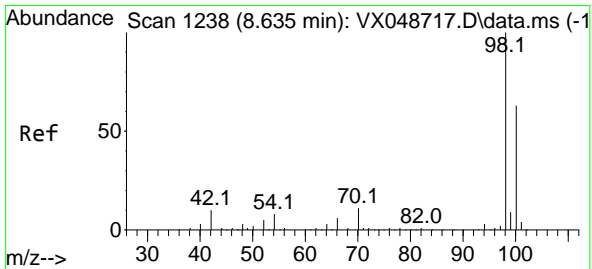
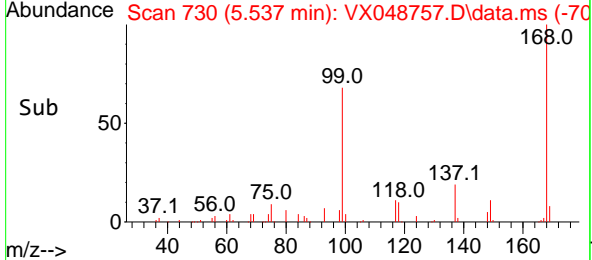
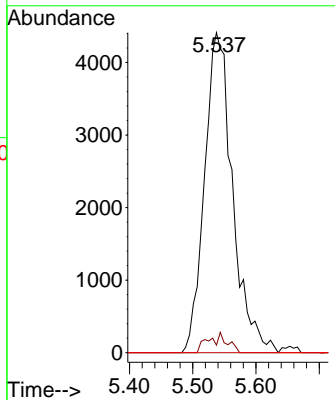


#38
 Carbon Tetrachloride
 Concen: 6.381 ug/l
 RT: 5.537 min Scan# 71
 Delta R.T. -0.128 min
 Lab File: VX048757.D
 Acq: 08 Dec 2025 15:59

Instrument : MSVOA_X
 ClientSampleId : OW-08B-72.5-120425-FD

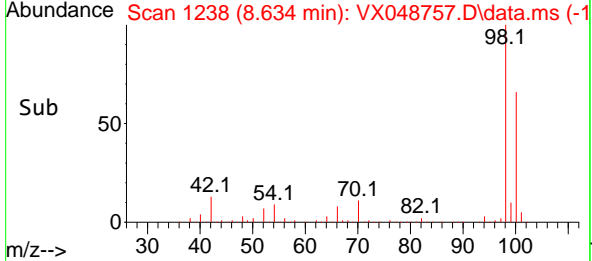
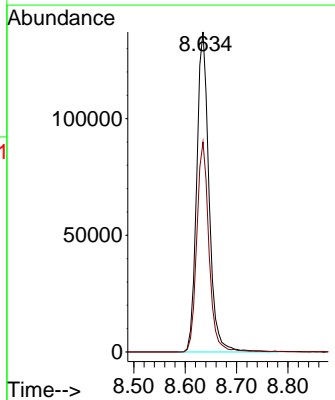
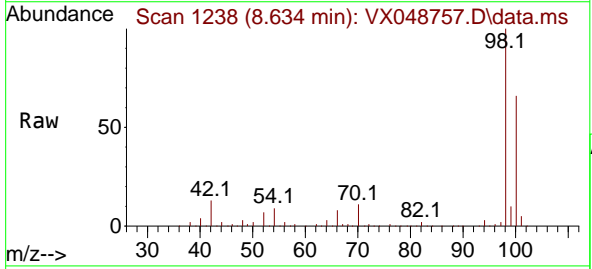


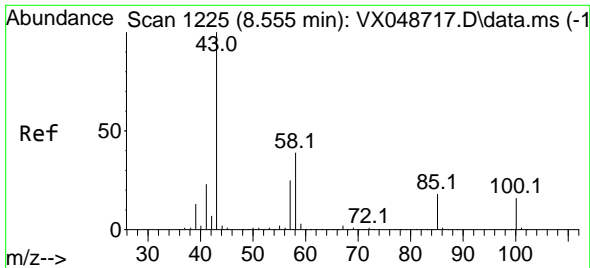
Tgt Ion:117 Resp: 13579
 Ion Ratio Lower Upper
 117 100
 119 2.3 80.5 120.7#
 121 0.0 25.4 38.0#



#50
 Toluene-d8
 Concen: 47.550 ug/l
 RT: 8.634 min Scan# 1238
 Delta R.T. -0.000 min
 Lab File: VX048757.D
 Acq: 08 Dec 2025 15:59

Tgt Ion: 98 Resp: 228610
 Ion Ratio Lower Upper
 98 100
 100 64.9 53.4 80.0

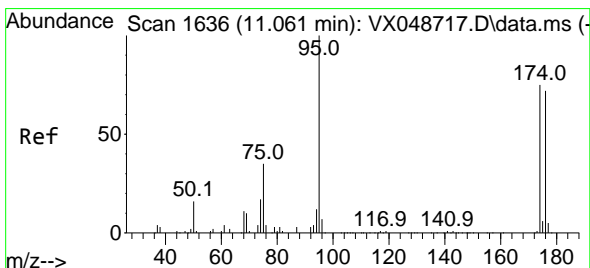
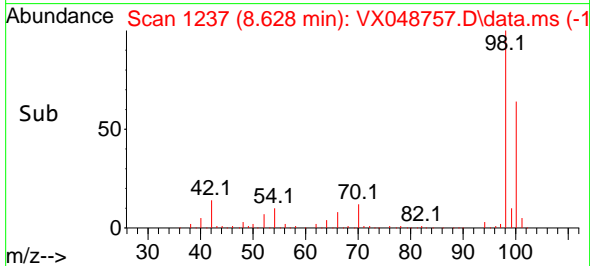
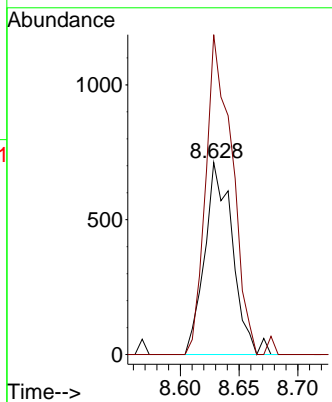
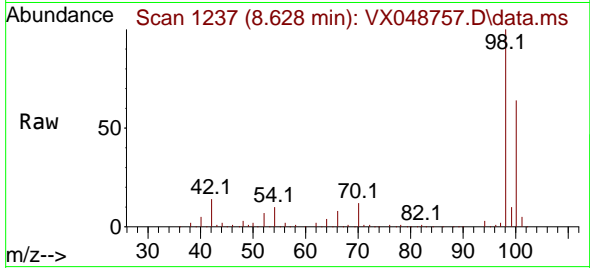




#51
 4-Methyl-2-Pentanone
 Concen: 0.556 ug/l
 RT: 8.628 min Scan# 1237
 Delta R.T. 0.073 min
 Lab File: VX048757.D
 Acq: 08 Dec 2025 15:59

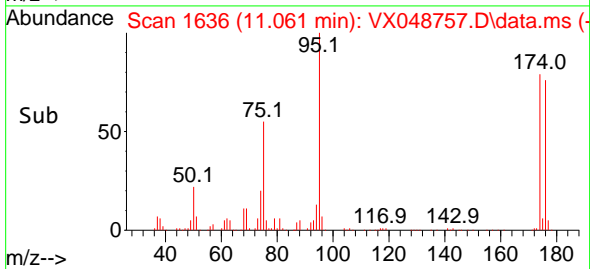
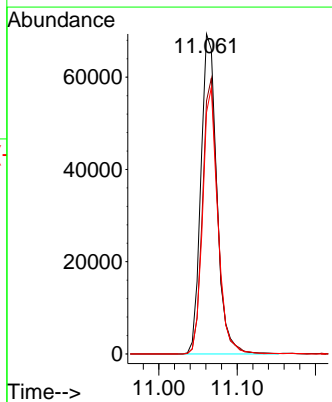
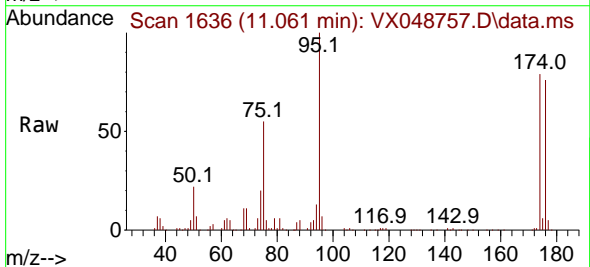
Instrument : MSVOA_X
 ClientSampleId : OW-08B-72.5-120425-FD

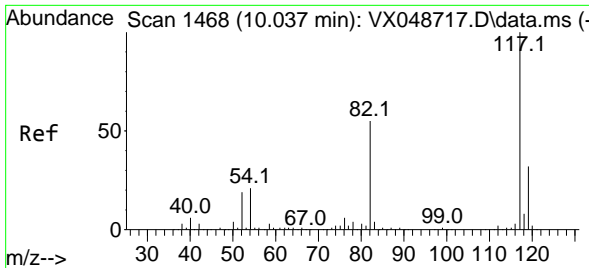
Tgt Ion: 43 Resp: 1174
 Ion Ratio Lower Upper
 43 100
 58 157.7 32.2 48.4#



#62
 4-Bromofluorobenzene
 Concen: 58.962 ug/l
 RT: 11.061 min Scan# 1636
 Delta R.T. -0.000 min
 Lab File: VX048757.D
 Acq: 08 Dec 2025 15:59

Tgt Ion: 95 Resp: 97752
 Ion Ratio Lower Upper
 95 100
 174 82.7 0.0 157.8
 176 79.5 0.0 154.0



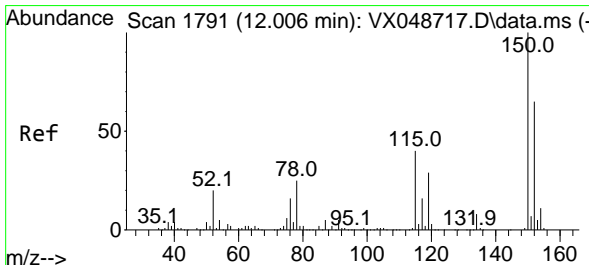
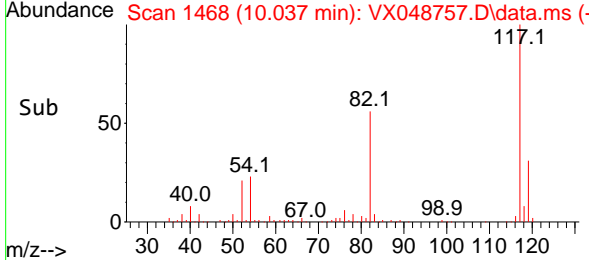
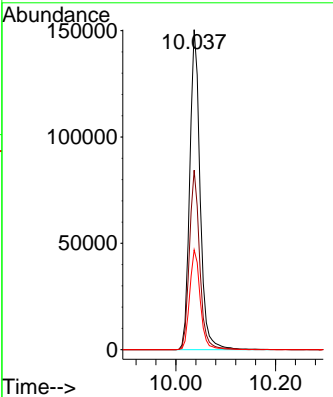
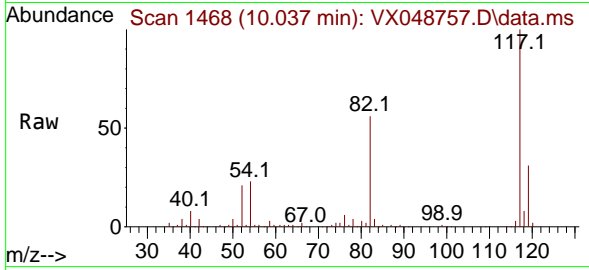


#63
 Chlorobenzene-d5
 Concen: 50.000 ug/l
 RT: 10.037 min Scan# 14
 Delta R.T. -0.000 min
 Lab File: VX048757.D
 Acq: 08 Dec 2025 15:59

Instrument : MSVOA_X
 ClientSampleId : OW-08B-72.5-120425-FD

Tgt Ion:117 Resp: 216738

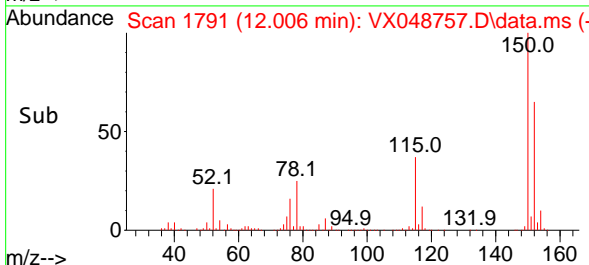
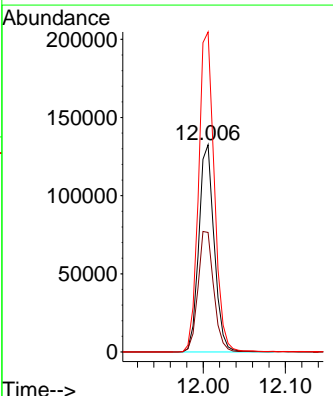
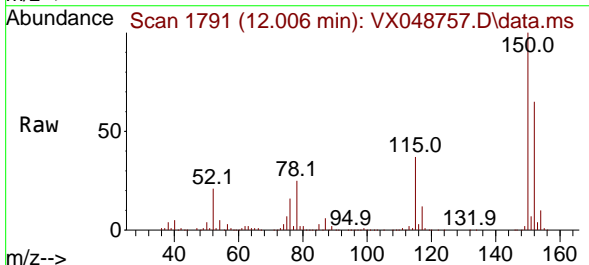
Ion	Ratio	Lower	Upper
117	100		
82	56.1	44.1	66.1
119	31.2	25.2	37.8

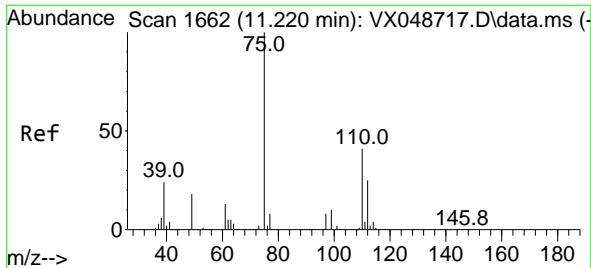


#72
 1,4-Dichlorobenzene-d4
 Concen: 50.000 ug/l
 RT: 12.006 min Scan# 1791
 Delta R.T. -0.000 min
 Lab File: VX048757.D
 Acq: 08 Dec 2025 15:59

Tgt Ion:152 Resp: 171945

Ion	Ratio	Lower	Upper
152	100		
115	59.7	42.1	126.4
150	158.7	0.0	347.8

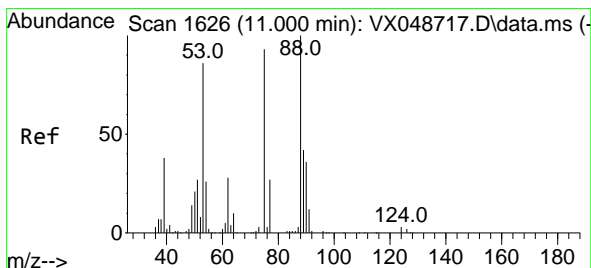
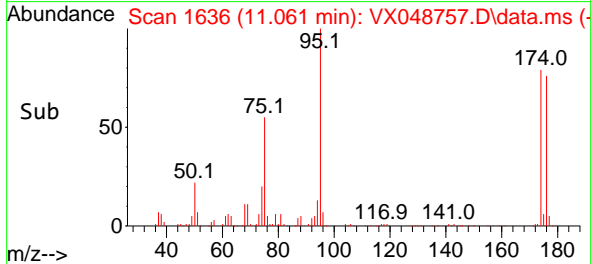
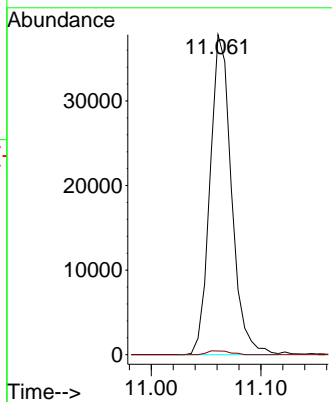
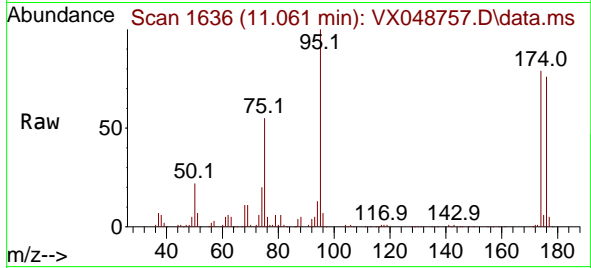




#76
 1,2,3-Trichloropropane
 Concen: 16.090 ug/l
 RT: 11.061 min Scan# 1636
 Delta R.T. -0.159 min
 Lab File: VX048757.D
 Acq: 08 Dec 2025 15:59

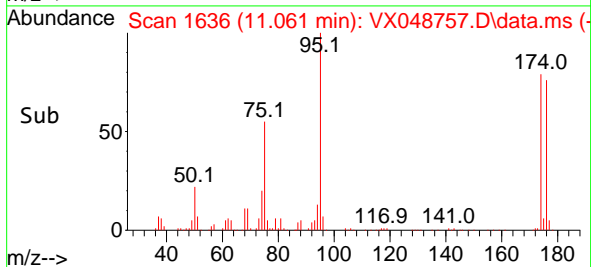
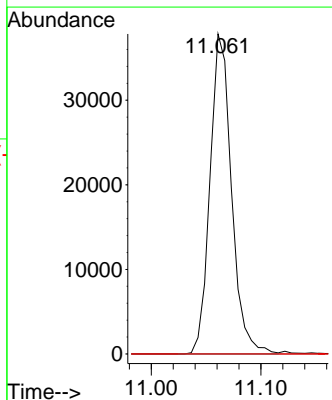
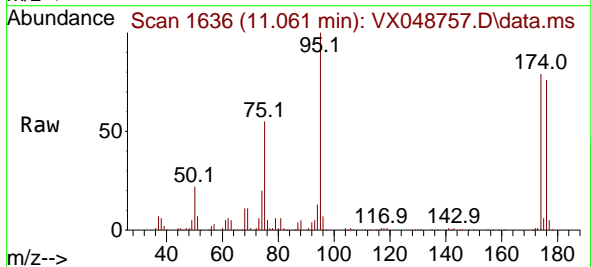
Instrument : MSVOA_X
 ClientSampleId : OW-08B-72.5-120425-FD

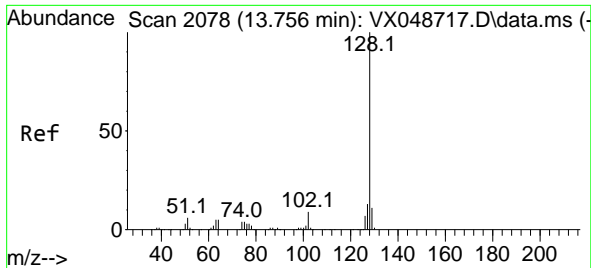
Tgt Ion: 75 Resp: 51528
 Ion Ratio Lower Upper
 75 100
 77 1.3 24.3 73.0#



#81
 trans-1,4-Dichloro-2-butene
 Concen: 38.220 ug/l
 RT: 11.061 min Scan# 1636
 Delta R.T. 0.061 min
 Lab File: VX048757.D
 Acq: 08 Dec 2025 15:59

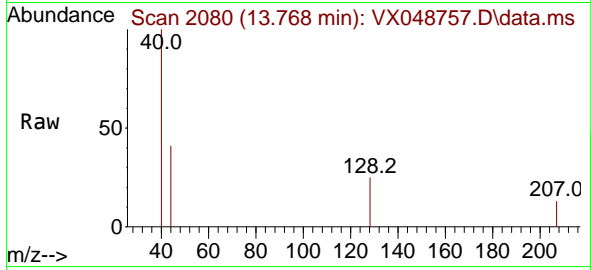
Tgt Ion: 75 Resp: 51528
 Ion Ratio Lower Upper
 75 100
 53 0.0 79.9 119.9#
 89 0.0 67.1 100.7#





#95
 Naphthalene
 Concen: Below Cal
 RT: 13.768 min Scan# 20
 Delta R.T. 0.012 min
 Lab File: VX048757.D
 Acq: 08 Dec 2025 15:59

Instrument : MSVOA_X
 ClientSampleId : OW-08B-72.5-120425-FD



Tgt Ion:128 Resp: 111

Ion	Ratio	Lower	Upper
128	100		
127	0.0	10.2	15.2#
129	0.0	8.6	13.0#

