

Data Path : Z:\voasrv\HPCHEM1\MSVOA_X\Data\VX120825\
 Data File : VX048758.D
 Acq On : 08 Dec 2025 16:19
 Operator : JC/MD
 Sample : Q3787-19
 Misc : 5.0mL/MSVOA_X/WATER
 ALS Vial : 18 Sample Multiplier: 1

Instrument :
 MSVOA_X
 ClientSampleId :
 OW-02B-21.2-120425

Quant Time: Dec 09 04:12:39 2025
 Quant Method : Z:\voasrv\HPCHEM1\MSVOA_X\Method\82X120425W.M
 Quant Title : SW846 8260
 QLast Update : Fri Dec 05 03:27:34 2025
 Response via : Initial Calibration

Compound	R.T.	QIon	Response	Conc	Units	Dev(Min)

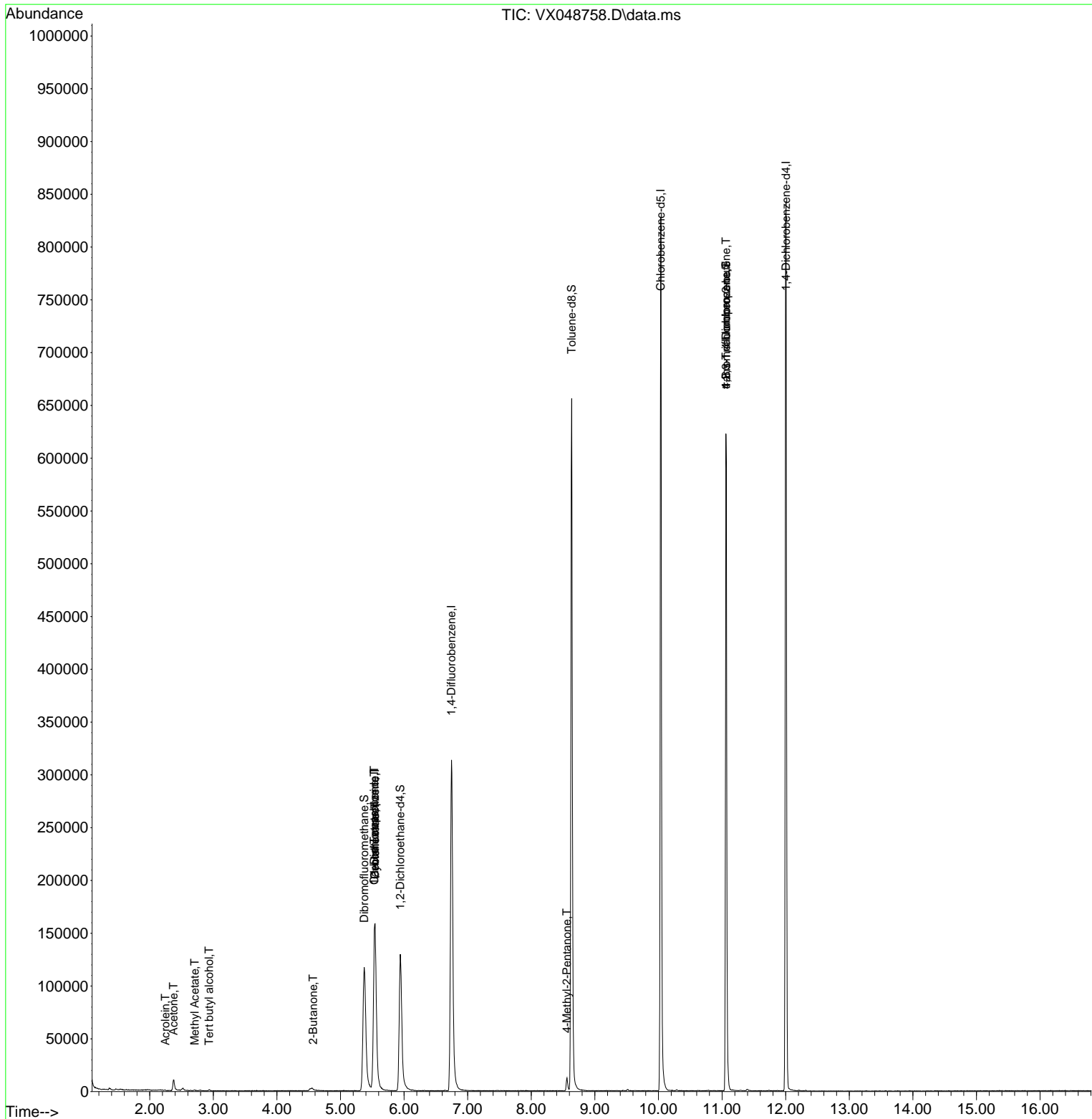
Internal Standards						
1) Pentafluorobenzene	5.543	168	166424	50.000	ug/l	0.00
34) 1,4-Difluorobenzene	6.744	114	350712	50.000	ug/l	0.00
63) Chlorobenzene-d5	10.036	117	376512	50.000	ug/l	0.00
72) 1,4-Dichlorobenzene-d4	12.006	152	184795	50.000	ug/l	0.00
System Monitoring Compounds						
33) 1,2-Dichloroethane-d4	5.940	65	141893	63.523	ug/l	0.00
Spiked Amount	50.000	Range 78 - 117	Recovery	=	127.040%#	
35) Dibromofluoromethane	5.373	113	117850	48.803	ug/l	0.00
Spiked Amount	50.000	Range 75 - 124	Recovery	=	97.600%	
50) Toluene-d8	8.634	98	406956	48.077	ug/l	0.00
Spiked Amount	50.000	Range 92 - 112	Recovery	=	96.160%	
62) 4-Bromofluorobenzene	11.061	95	173490	59.438	ug/l	0.00
Spiked Amount	50.000	Range 83 - 123	Recovery	=	118.880%	
Target Compounds						
						Qvalue
11) Tert butyl alcohol	2.934	59	213	0.591	ug/l #	73
13) Acrolein	2.245	56	60	40.322	ug/l #	70
16) Acetone	2.373	43	14227	16.638	ug/l	95
18) Methyl Acetate	2.708	43	1102	0.458	ug/l #	79
25) 2-Butanone	4.568	43	1226	0.971	ug/l #	46
31) Cyclohexane	5.543	56	3549	1.176	ug/l #	1
36) 1,1-Dichloropropene	5.531	75	13458	4.069	ug/l #	48
38) Carbon Tetrachloride	5.531	117	17507	4.673	ug/l #	14
51) 4-Methyl-2-Pentanone	8.561	43	8232	2.216	ug/l	96
76) 1,2,3-Trichloropropane	11.061	75	91210	26.500	ug/l #	30
81) trans-1,4-Dichloro-2-b...	11.061	75	91210	62.948	ug/l #	3
95) Naphthalene	13.767	128	121	Below Cal	#	69

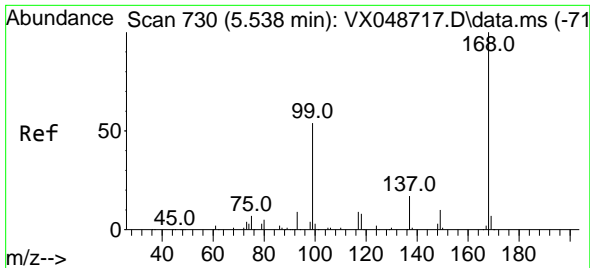
(#) = qualifier out of range (m) = manual integration (+) = signals summed

Data Path : Z:\voasrv\HPCHEM1\MSVOA_X\Data\VX120825\
 Data File : VX048758.D
 Acq On : 08 Dec 2025 16:19
 Operator : JC/MD
 Sample : Q3787-19
 Misc : 5.0mL/MSVOA_X/WATER
 ALS Vial : 18 Sample Multiplier: 1

Instrument :
 MSVOA_X
 ClientSampleId :
 OW-02B-21.2-120425

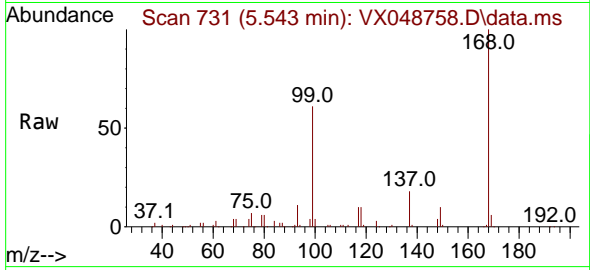
Quant Time: Dec 09 04:12:39 2025
 Quant Method : Z:\voasrv\HPCHEM1\MSVOA_X\Method\82X120425W.M
 Quant Title : SW846 8260
 QLast Update : Fri Dec 05 03:27:34 2025
 Response via : Initial Calibration



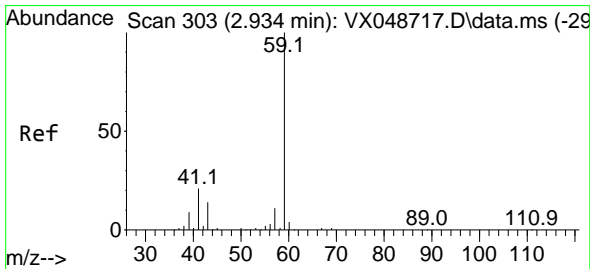
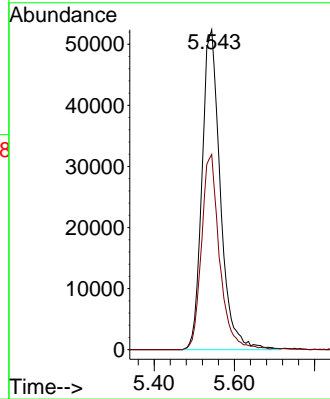
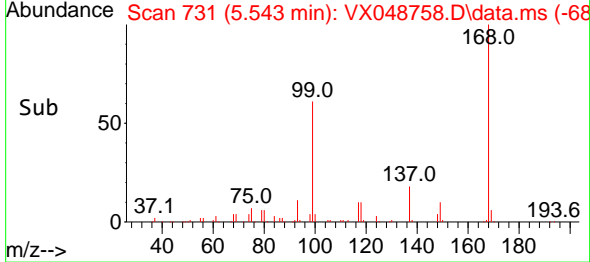


#1
 Pentafluorobenzene
 Concen: 50.000 ug/l
 RT: 5.543 min Scan# 71
 Delta R.T. 0.005 min
 Lab File: VX048758.D
 Acq: 08 Dec 2025 16:19

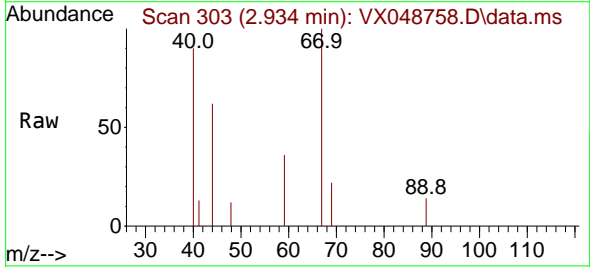
Instrument : MSVOA_X
 ClientSampleId : OW-02B-21.2-120425



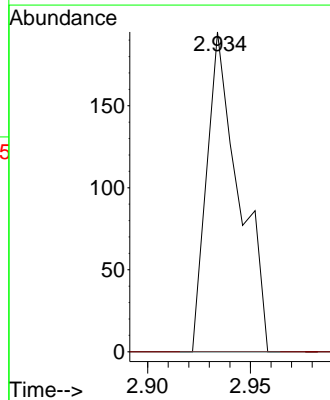
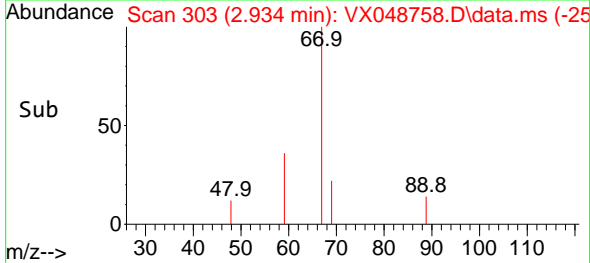
Tgt Ion:168 Resp: 166424
 Ion Ratio Lower Upper
 168 100
 99 61.0 44.2 66.4

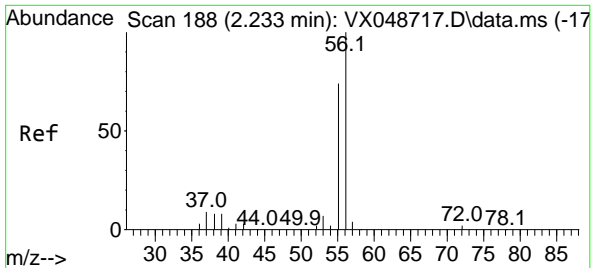


#11
 Tert butyl alcohol
 Concen: 0.591 ug/l
 RT: 2.934 min Scan# 303
 Delta R.T. -0.000 min
 Lab File: VX048758.D
 Acq: 08 Dec 2025 16:19



Tgt Ion: 59 Resp: 213
 Ion Ratio Lower Upper
 59 100
 57 0.0 8.1 12.1#

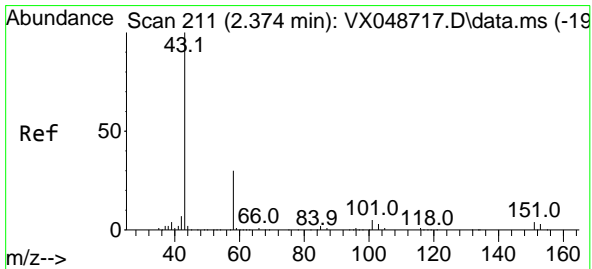
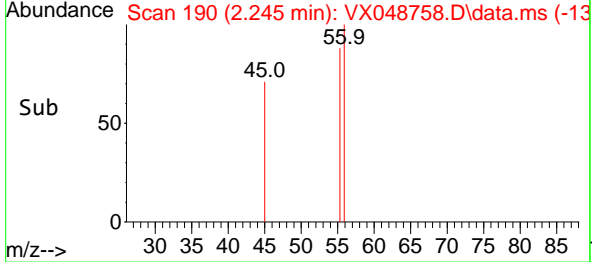
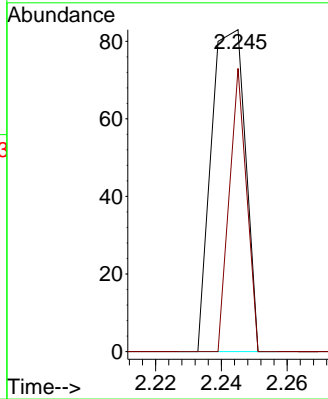
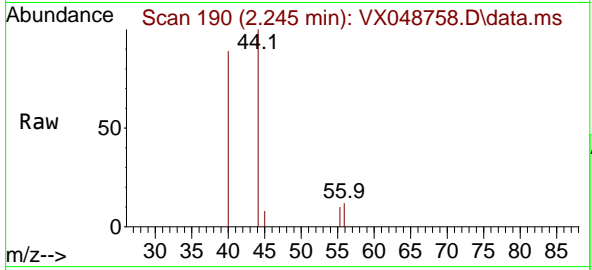




#13
 Acrolein
 Concen: 40.322 ug/l
 RT: 2.245 min Scan# 188
 Delta R.T. 0.012 min
 Lab File: VX048758.D
 Acq: 08 Dec 2025 16:19

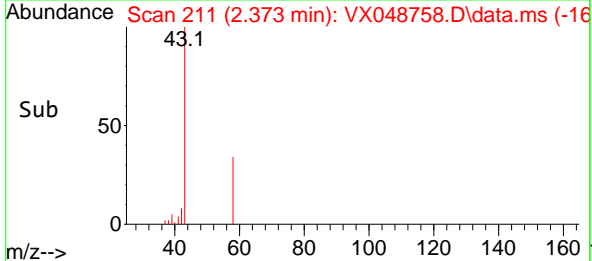
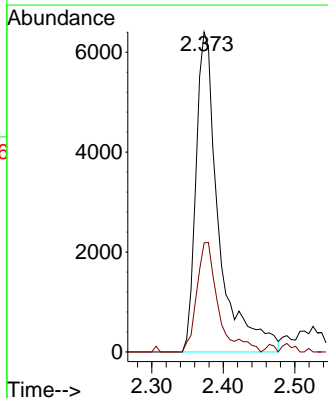
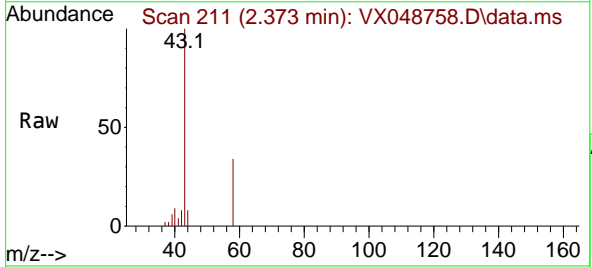
Instrument : MSVOA_X
 ClientSampleId : OW-02B-21.2-120425

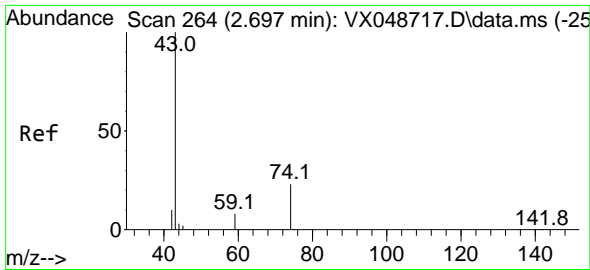
Tgt Ion: 56 Resp: 60
 Ion Ratio Lower Upper
 56 100
 55 45.0 55.8 83.6#



#16
 Acetone
 Concen: 16.638 ug/l
 RT: 2.373 min Scan# 211
 Delta R.T. -0.000 min
 Lab File: VX048758.D
 Acq: 08 Dec 2025 16:19

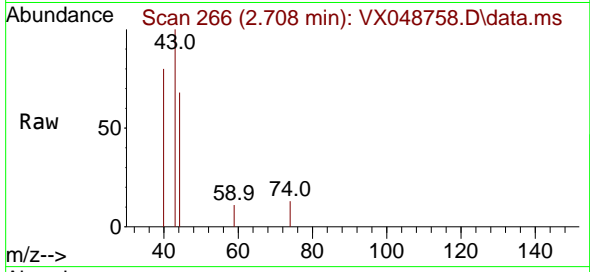
Tgt Ion: 43 Resp: 14227
 Ion Ratio Lower Upper
 43 100
 58 34.1 25.0 37.4



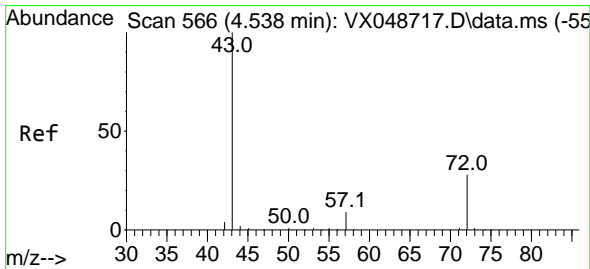
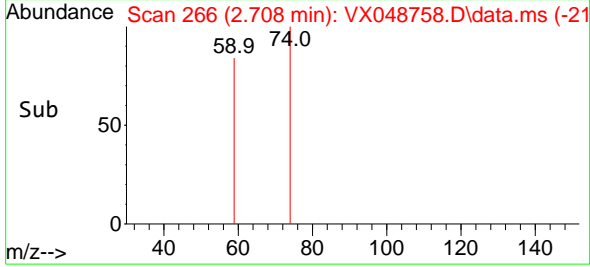
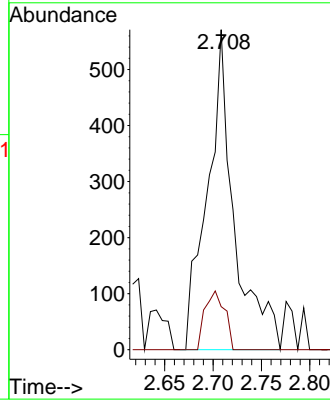


#18
 Methyl Acetate
 Concen: 0.458 ug/l
 RT: 2.708 min Scan# 20
 Delta R.T. 0.012 min
 Lab File: VX048758.D
 Acq: 08 Dec 2025 16:19

Instrument : MSVOA_X
 ClientSampleId : OW-02B-21.2-120425

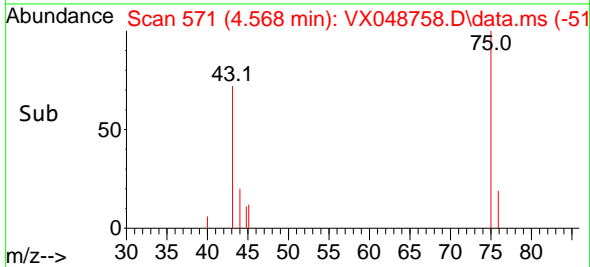
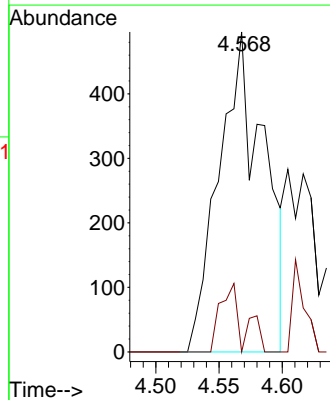
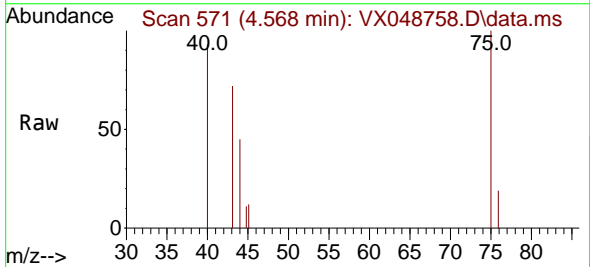


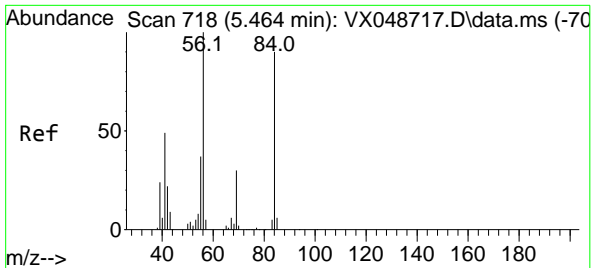
Tgt Ion: 43 Resp: 1102
 Ion Ratio Lower Upper
 43 100
 74 13.6 19.2 28.8#



#25
 2-Butanone
 Concen: 0.971 ug/l
 RT: 4.568 min Scan# 571
 Delta R.T. 0.030 min
 Lab File: VX048758.D
 Acq: 08 Dec 2025 16:19

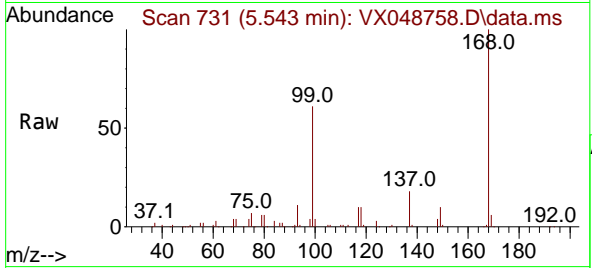
Tgt Ion: 43 Resp: 1226
 Ion Ratio Lower Upper
 43 100
 72 0.0 22.6 34.0#





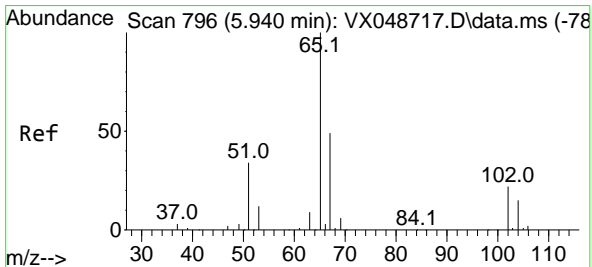
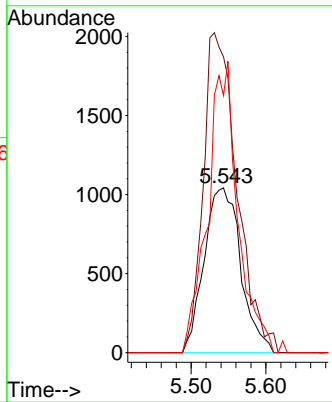
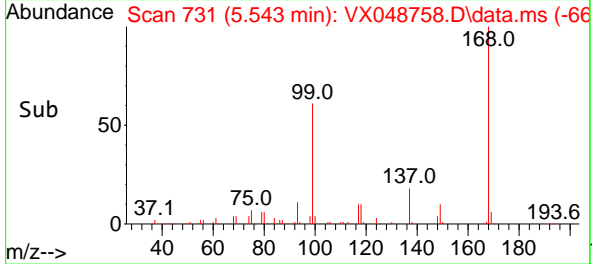
#31
 Cyclohexane
 Concen: 1.176 ug/l
 RT: 5.543 min Scan# 718
 Delta R.T. 0.079 min
 Lab File: VX048758.D
 Acq: 08 Dec 2025 16:19

Instrument : MSVOA_X
 ClientSampleId : OW-02B-21.2-120425



Tgt Ion: 56 Resp: 3549

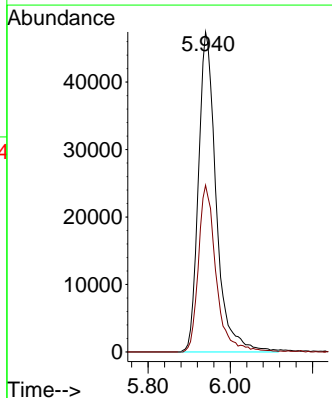
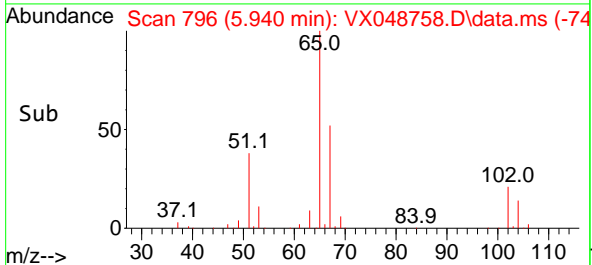
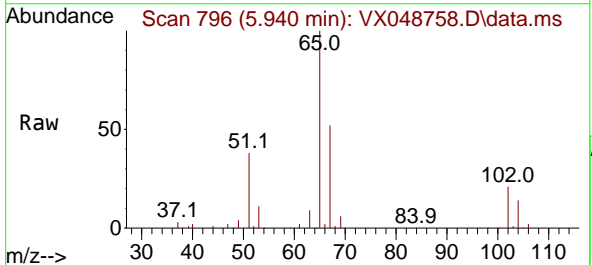
Ion	Ratio	Lower	Upper
56	100		
69	179.7	24.2	36.2#
84	156.0	72.1	108.1#

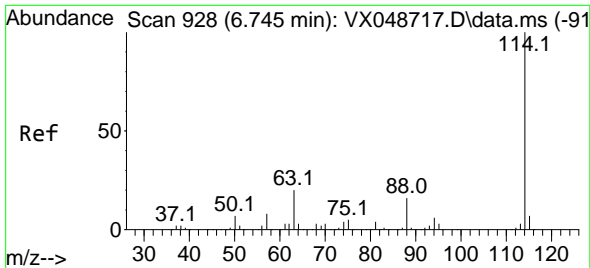


#33
 1,2-Dichloroethane-d4
 Concen: 63.523 ug/l
 RT: 5.940 min Scan# 796
 Delta R.T. -0.000 min
 Lab File: VX048758.D
 Acq: 08 Dec 2025 16:19

Tgt Ion: 65 Resp: 141893

Ion	Ratio	Lower	Upper
65	100		
67	51.9	0.0	107.4



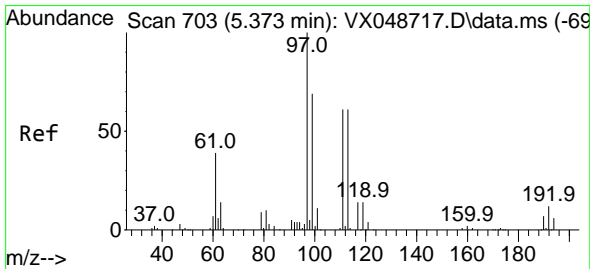
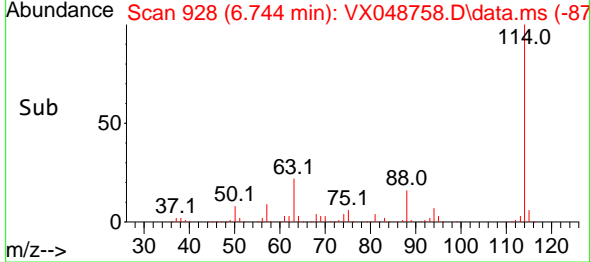
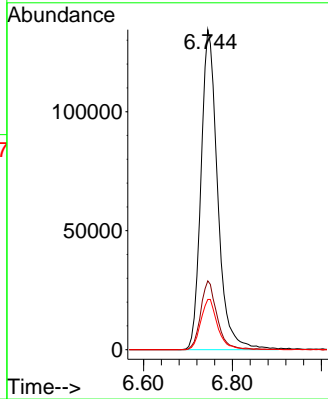
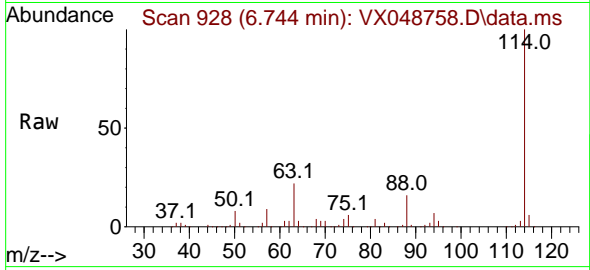


#34
 1,4-Difluorobenzene
 Concen: 50.000 ug/l
 RT: 6.744 min Scan# 91
 Delta R.T. -0.000 min
 Lab File: VX048758.D
 Acq: 08 Dec 2025 16:19

Instrument : MSVOA_X
 ClientSampleId : OW-02B-21.2-120425

Tgt Ion:114 Resp: 350712

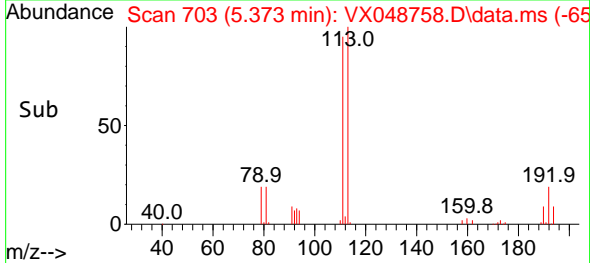
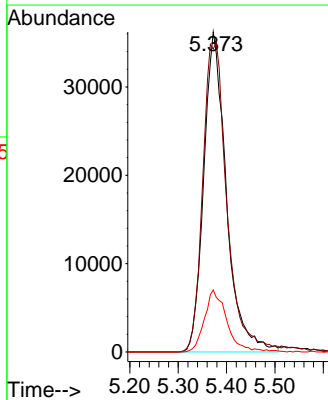
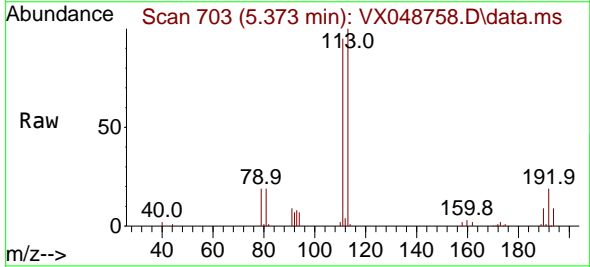
Ion	Ratio	Lower	Upper
114	100		
63	21.5	0.0	39.0
88	15.7	0.0	31.8

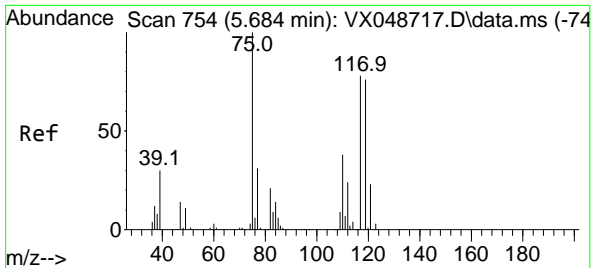


#35
 Dibromofluoromethane
 Concen: 48.803 ug/l
 RT: 5.373 min Scan# 703
 Delta R.T. -0.000 min
 Lab File: VX048758.D
 Acq: 08 Dec 2025 16:19

Tgt Ion:113 Resp: 117850

Ion	Ratio	Lower	Upper
113	100		
111	103.7	79.5	119.3
192	19.3	16.1	24.1

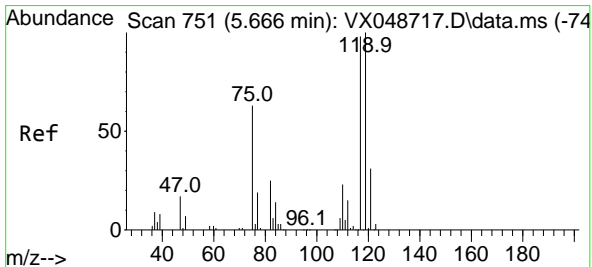
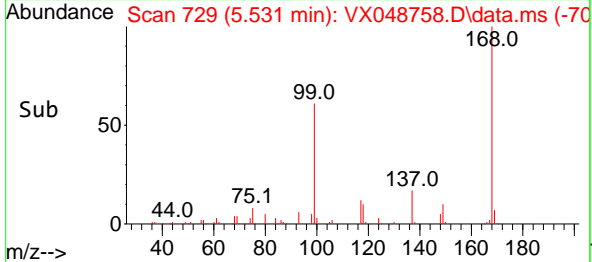
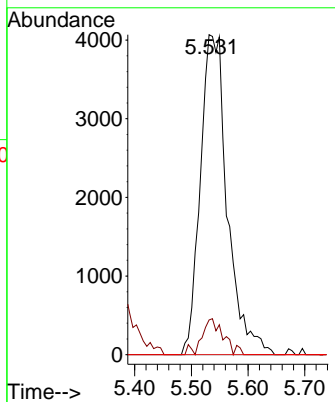
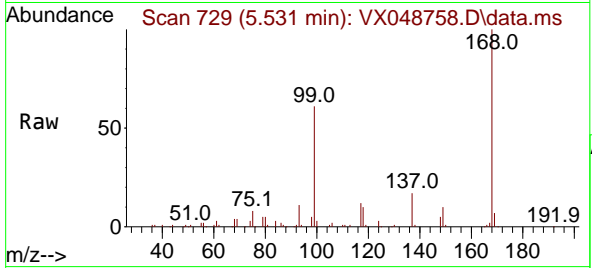




#36
 1,1-Dichloropropene
 Concen: 4.069 ug/l
 RT: 5.531 min Scan# 729
 Delta R.T. -0.153 min
 Lab File: VX048758.D
 Acq: 08 Dec 2025 16:19

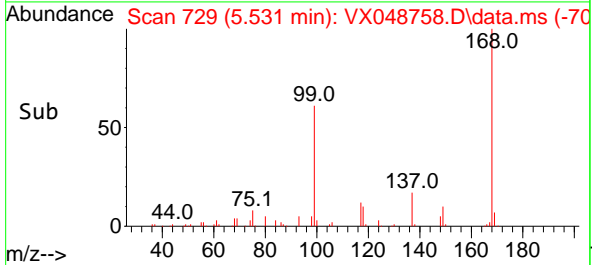
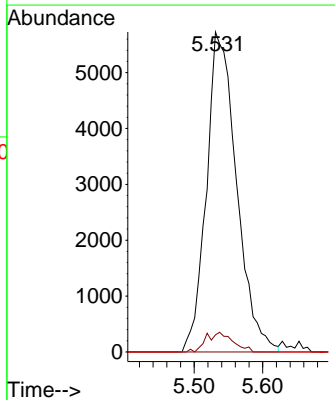
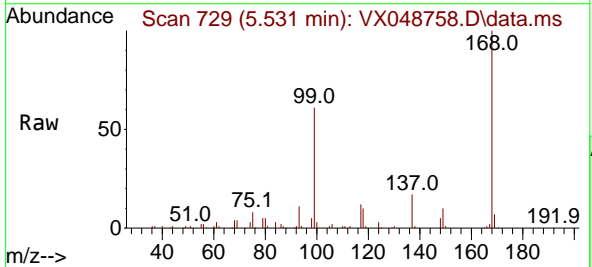
Instrument : MSVOA_X
 ClientSampleId : OW-02B-21.2-120425

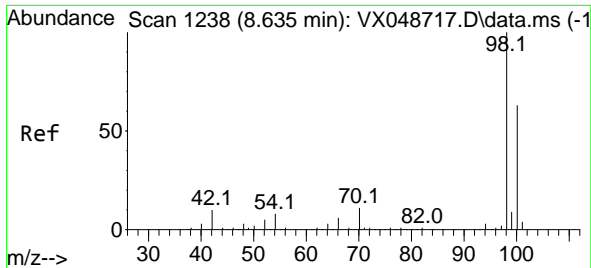
Tgt Ion	Resp	Lower	Upper
75	13458		
75	100		
110	8.5	18.6	55.8#
77	0.0	25.3	37.9#



#38
 Carbon Tetrachloride
 Concen: 4.673 ug/l
 RT: 5.531 min Scan# 729
 Delta R.T. -0.135 min
 Lab File: VX048758.D
 Acq: 08 Dec 2025 16:19

Tgt Ion	Resp	Lower	Upper
117	17507		
117	100		
119	5.3	80.5	120.7#
121	0.0	25.4	38.0#

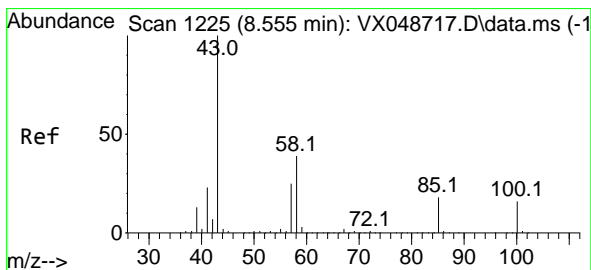
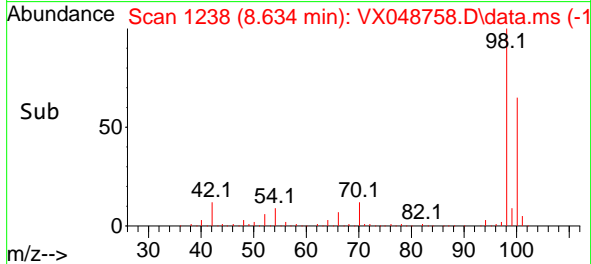
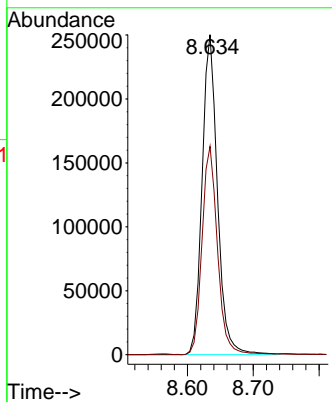
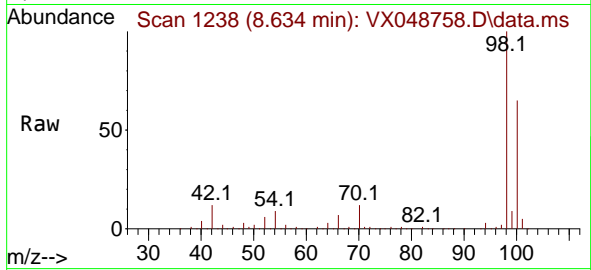




#50
 Toluene-d8
 Concen: 48.077 ug/l
 RT: 8.634 min Scan# 11
 Delta R.T. -0.000 min
 Lab File: VX048758.D
 Acq: 08 Dec 2025 16:19

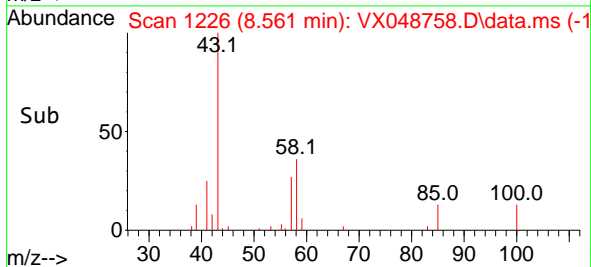
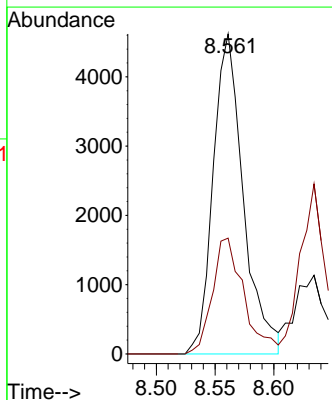
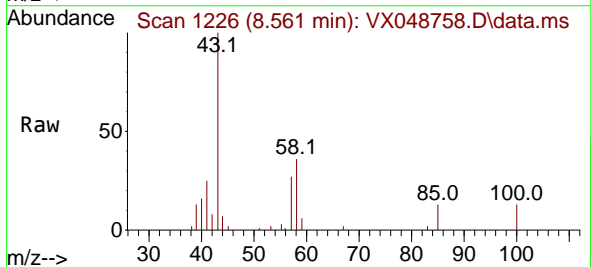
Instrument : MSVOA_X
 ClientSampleId : OW-02B-21.2-120425

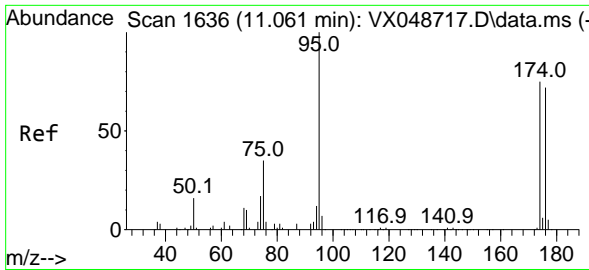
Tgt Ion: 98 Resp: 406956
 Ion Ratio Lower Upper
 98 100
 100 65.5 53.4 80.0



#51
 4-Methyl-2-Pentanone
 Concen: 2.216 ug/l
 RT: 8.561 min Scan# 1226
 Delta R.T. 0.006 min
 Lab File: VX048758.D
 Acq: 08 Dec 2025 16:19

Tgt Ion: 43 Resp: 8232
 Ion Ratio Lower Upper
 43 100
 58 37.9 32.2 48.4



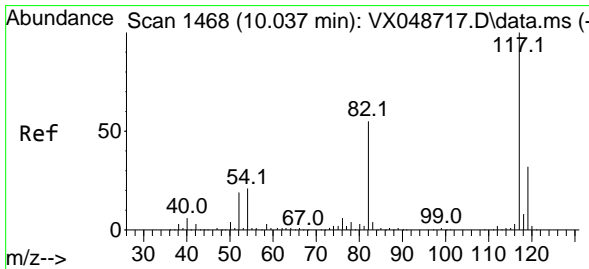
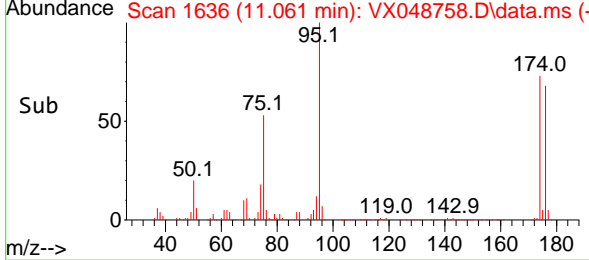
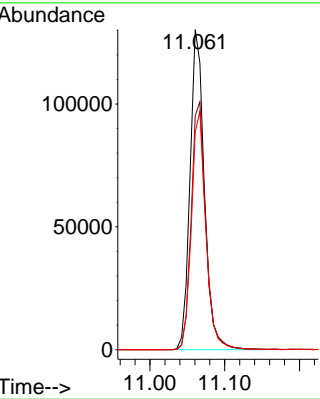
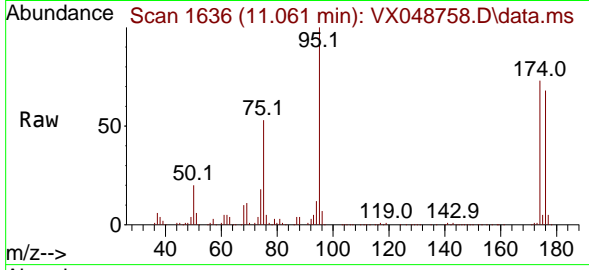


#62
 4-Bromofluorobenzene
 Concen: 59.438 ug/l
 RT: 11.061 min Scan# 11
 Delta R.T. -0.000 min
 Lab File: VX048758.D
 Acq: 08 Dec 2025 16:19

Instrument : MSVOA_X
 ClientSampleId : OW-02B-21.2-120425

Tgt Ion: 95 Resp: 173490

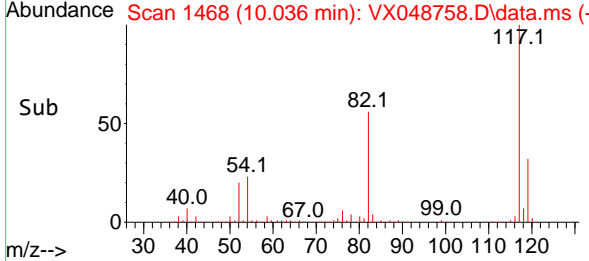
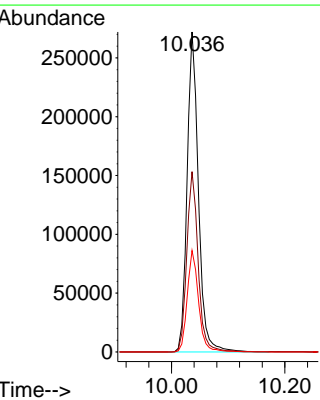
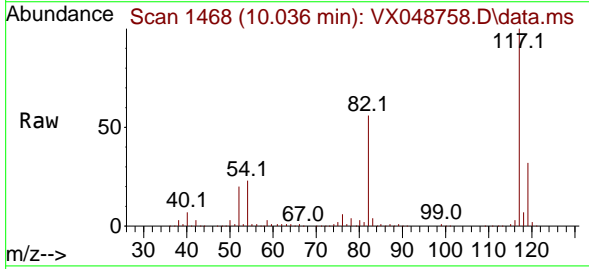
Ion	Ratio	Lower	Upper
95	100		
174	79.3	0.0	157.8
176	75.0	0.0	154.0

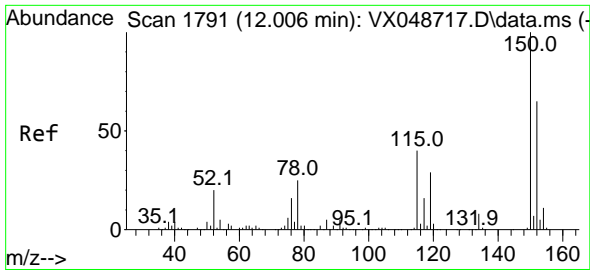


#63
 Chlorobenzene-d5
 Concen: 50.000 ug/l
 RT: 10.036 min Scan# 1468
 Delta R.T. -0.000 min
 Lab File: VX048758.D
 Acq: 08 Dec 2025 16:19

Tgt Ion: 117 Resp: 376512

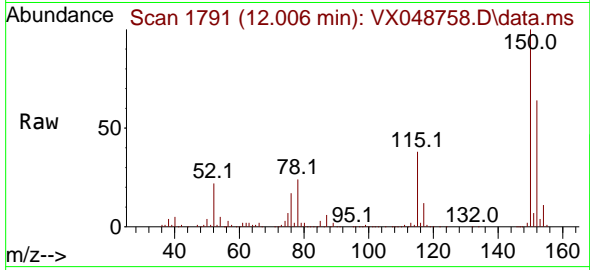
Ion	Ratio	Lower	Upper
117	100		
82	56.3	44.1	66.1
119	31.7	25.2	37.8



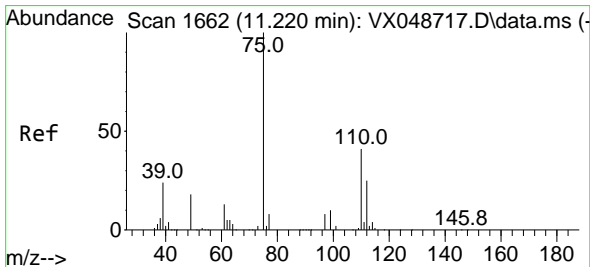
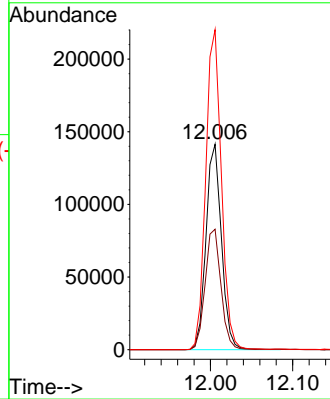
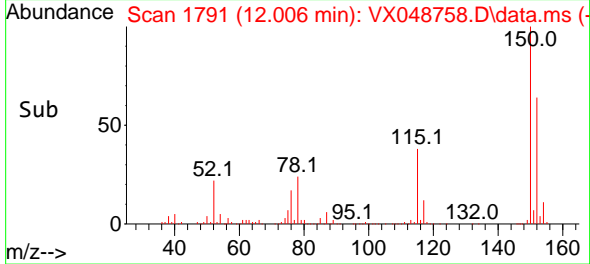


#72
 1,4-Dichlorobenzene-d4
 Concen: 50.000 ug/l
 RT: 12.006 min Scan# 1791
 Delta R.T. -0.000 min
 Lab File: VX048758.D
 Acq: 08 Dec 2025 16:19

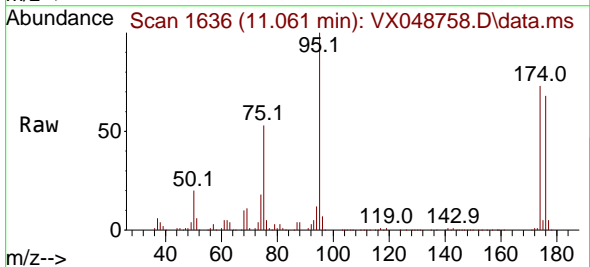
Instrument : MSVOA_X
 ClientSampleId : OW-02B-21.2-120425



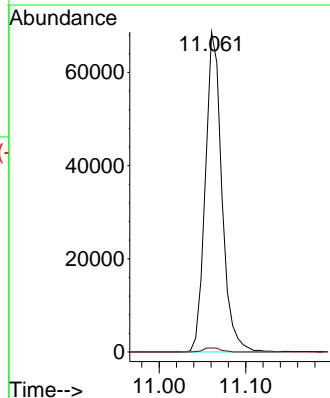
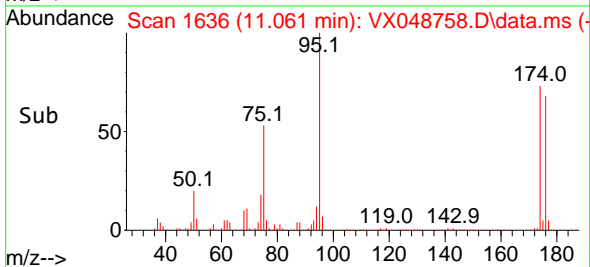
Tgt Ion:152 Resp: 184795
 Ion Ratio Lower Upper
 152 100
 115 60.2 42.1 126.4
 150 157.3 0.0 347.8

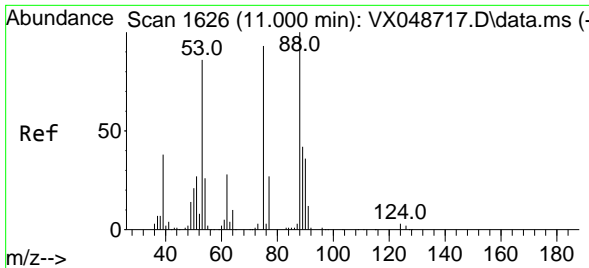


#76
 1,2,3-Trichloropropane
 Concen: 26.500 ug/l
 RT: 11.061 min Scan# 1636
 Delta R.T. -0.159 min
 Lab File: VX048758.D
 Acq: 08 Dec 2025 16:19



Tgt Ion: 75 Resp: 91210
 Ion Ratio Lower Upper
 75 100
 77 1.3 24.3 73.0#



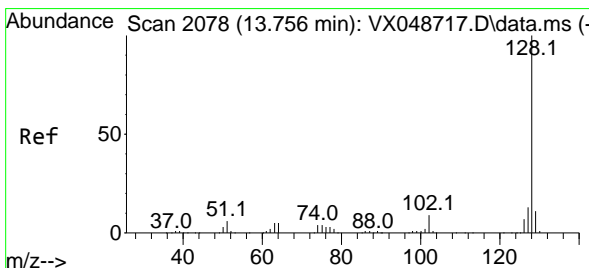
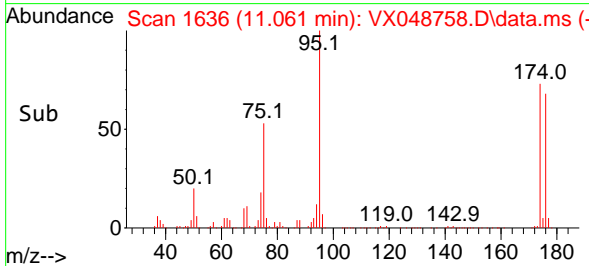
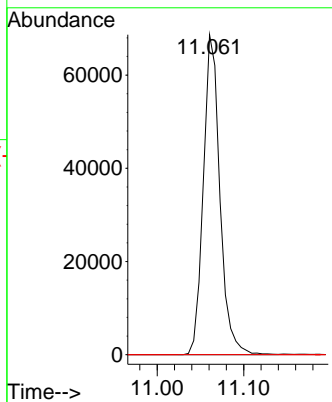
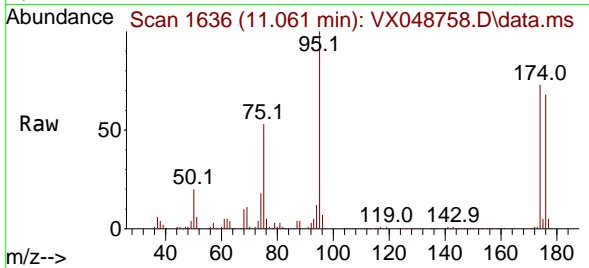


#81
 trans-1,4-Dichloro-2-butene
 Concen: 62.948 ug/l
 RT: 11.061 min Scan# 11
 Delta R.T. 0.060 min
 Lab File: VX048758.D
 Acq: 08 Dec 2025 16:19

Instrument : MSVOA_X
 ClientSampleId : OW-02B-21.2-120425

Tgt Ion: 75 Resp: 91210

Ion	Ratio	Lower	Upper
75	100		
53	0.0	79.9	119.9#
89	0.0	67.1	100.7#



#95
 Naphthalene
 Concen: Below Cal
 RT: 13.767 min Scan# 2080
 Delta R.T. 0.012 min
 Lab File: VX048758.D
 Acq: 08 Dec 2025 16:19

Tgt Ion: 128 Resp: 121

Ion	Ratio	Lower	Upper
128	100		
127	0.0	10.2	15.2#
129	0.0	8.6	13.0#

