

Data Path : Z:\voasrv\HPCHEM1\MSVOA\_X\Data\VX120825\  
 Data File : VX048762.D  
 Acq On : 08 Dec 2025 17:41  
 Operator : JC/MD  
 Sample : Q3788-11  
 Misc : 5.0mL/MSVOA\_X/WATER  
 ALS Vial : 22 Sample Multiplier: 1

Instrument :  
 MSVOA\_X  
 ClientSampleId :  
 MW-16B-87.5-120525

Quant Time: Dec 09 04:14:11 2025  
 Quant Method : Z:\voasrv\HPCHEM1\MSVOA\_X\Method\82X120425W.M  
 Quant Title : SW846 8260  
 QLast Update : Fri Dec 05 03:27:34 2025  
 Response via : Initial Calibration

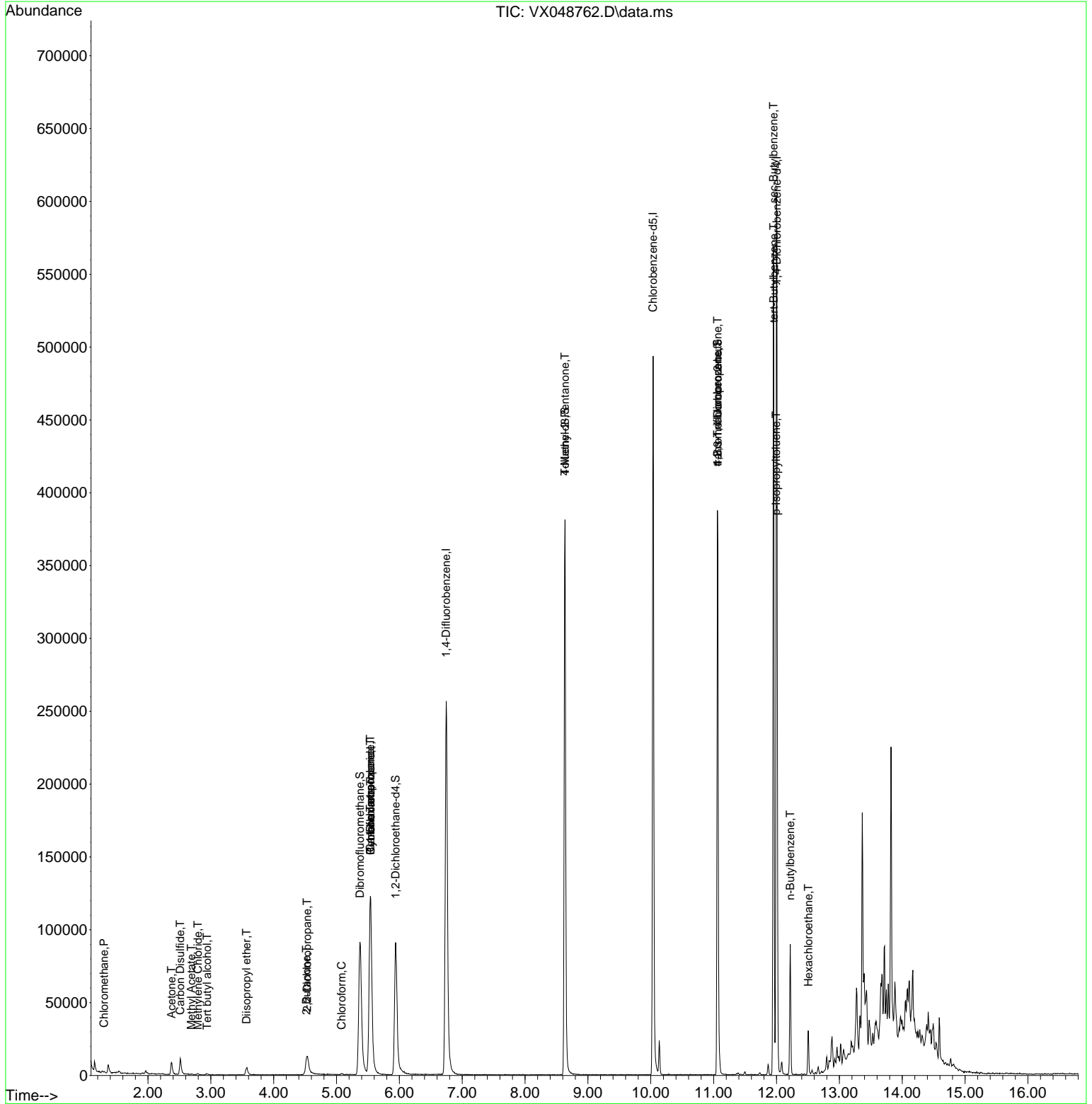
Compound	R.T.	QIon	Response	Conc	Units	Dev(Min)
-----						
Internal Standards						
1) Pentafluorobenzene	5.544	168	123961	50.000	ug/l	0.00
34) 1,4-Difluorobenzene	6.745	114	277457	50.000	ug/l	0.00
63) Chlorobenzene-d5	10.037	117	227659	50.000	ug/l	0.00
72) 1,4-Dichlorobenzene-d4	12.006	152	124497	50.000	ug/l	0.00
System Monitoring Compounds						
33) 1,2-Dichloroethane-d4	5.940	65	98874	59.427	ug/l	0.00
Spiked Amount	50.000	Range 78 - 117	Recovery	=	118.860%#	
35) Dibromofluoromethane	5.373	113	90194	47.212	ug/l	0.00
Spiked Amount	50.000	Range 75 - 124	Recovery	=	94.420%	
50) Toluene-d8	8.635	98	238014	35.543	ug/l	0.00
Spiked Amount	50.000	Range 92 - 112	Recovery	=	71.080%#	
62) 4-Bromofluorobenzene	11.061	95	101242	43.843	ug/l	0.00
Spiked Amount	50.000	Range 83 - 123	Recovery	=	87.680%	
Target Compounds						
						Qvalue
3) Chloromethane	1.301	50	634	0.398	ug/l #	67
11) Tert butyl alcohol	2.941	59	599	2.230	ug/l #	73
16) Acetone	2.374	43	11034	17.324	ug/l	99
17) Carbon Disulfide	2.514	76	1117	0.267	ug/l #	74
18) Methyl Acetate	2.691	43	574	0.320	ug/l #	51
20) Methylene Chloride	2.794	84	420	0.264	ug/l #	65
22) Diisopropyl ether	3.568	45	2918	0.646	ug/l #	1
25) 2-Butanone	4.520	43	759	0.807	ug/l #	46
26) 2,2-Dichloropropane	4.532	77	1200	0.538	ug/l #	52
30) Chloroform	5.080	83	704	0.261	ug/l #	83
31) Cyclohexane	5.544	56	3144	1.398	ug/l #	49
36) 1,1-Dichloropropene	5.538	75	10655	4.072	ug/l #	48
38) Carbon Tetrachloride	5.538	117	13146	4.436	ug/l #	14
51) 4-Methyl-2-Pentanone	8.635	43	1314	0.447	ug/l #	1
76) 1,2,3-Trichloropropane	11.061	75	55589	23.973	ug/l #	30
81) trans-1,4-Dichloro-2-b...	11.061	75	55589	56.946	ug/l #	3
83) tert-Butylbenzene	11.957	119	4529	0.632	ug/l #	1
85) sec-Butylbenzene	11.951	105	6766	0.779	ug/l	94
86) p-Isopropyltoluene	11.994	119	12066	1.625	ug/l	93
89) n-Butylbenzene	12.219	91	12640	1.819	ug/l #	77
90) Hexachloroethane	12.506	117	431	0.284	ug/l #	13
95) Naphthalene	13.756	128	216	Below Cal	#	1

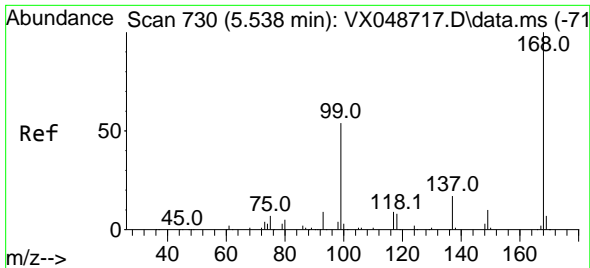
(#) = qualifier out of range (m) = manual integration (+) = signals summed

Data Path : Z:\voasrv\HPCHEM1\MSVOA\_X\Data\VX120825\  
 Data File : VX048762.D  
 Acq On : 08 Dec 2025 17:41  
 Operator : JC/MD  
 Sample : Q3788-11  
 Misc : 5.0mL/MSVOA\_X/WATER  
 ALS Vial : 22 Sample Multiplier: 1

Instrument :  
 MSVOA\_X  
 ClientSampleId :  
 MW-16B-87.5-120525

Quant Time: Dec 09 04:14:11 2025  
 Quant Method : Z:\voasrv\HPCHEM1\MSVOA\_X\Method\82X120425W.M  
 Quant Title : SW846 8260  
 QLast Update : Fri Dec 05 03:27:34 2025  
 Response via : Initial Calibration

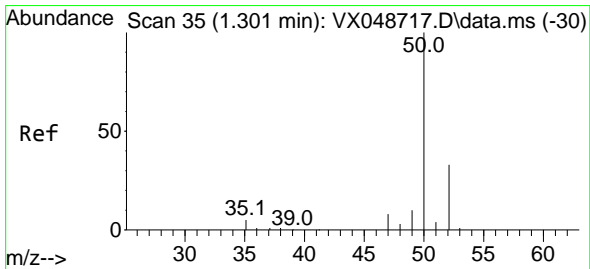
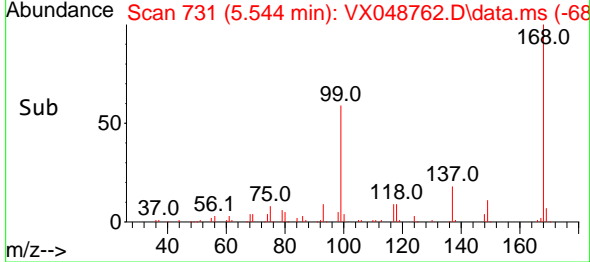
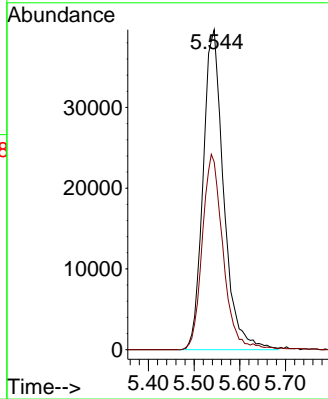
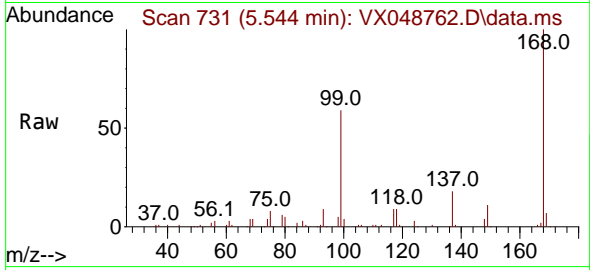




#1  
 Pentafluorobenzene  
 Concen: 50.000 ug/l  
 RT: 5.544 min Scan# 71  
 Delta R.T. 0.006 min  
 Lab File: VX048762.D  
 Acq: 08 Dec 2025 17:41

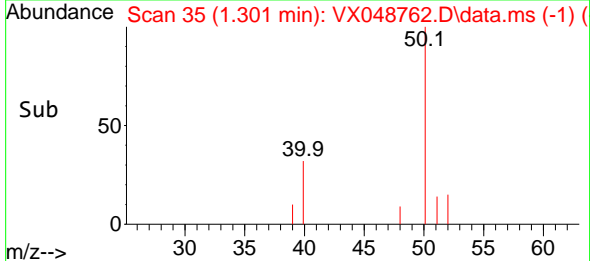
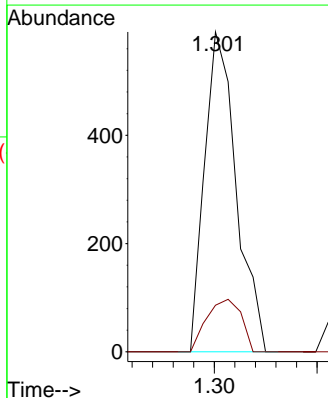
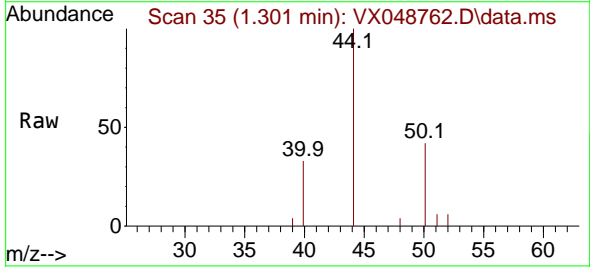
Instrument : MSVOA\_X  
 ClientSampleId : MW-16B-87.5-120525

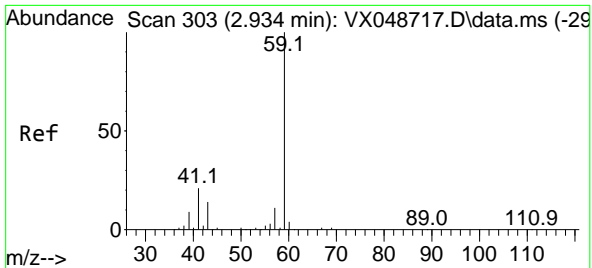
Tgt Ion:168 Resp: 123961  
 Ion Ratio Lower Upper  
 168 100  
 99 58.6 44.2 66.4



#3  
 Chloromethane  
 Concen: 0.398 ug/l  
 RT: 1.301 min Scan# 35  
 Delta R.T. 0.000 min  
 Lab File: VX048762.D  
 Acq: 08 Dec 2025 17:41

Tgt Ion: 50 Resp: 634  
 Ion Ratio Lower Upper  
 50 100  
 52 14.6 26.4 39.6#

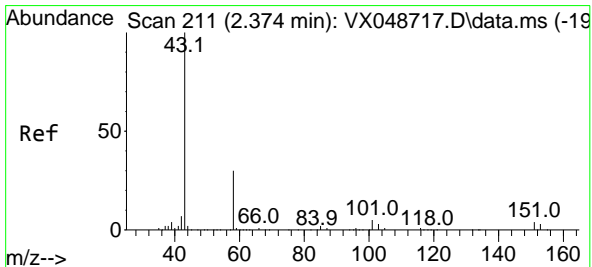
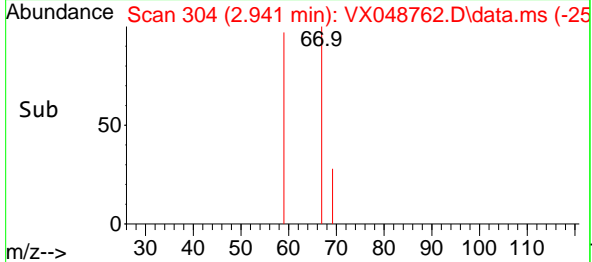
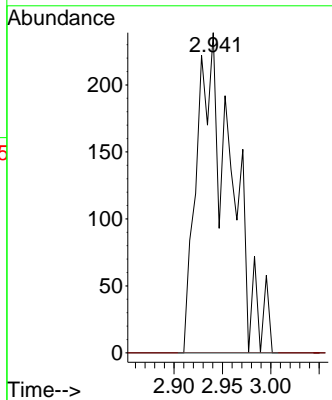
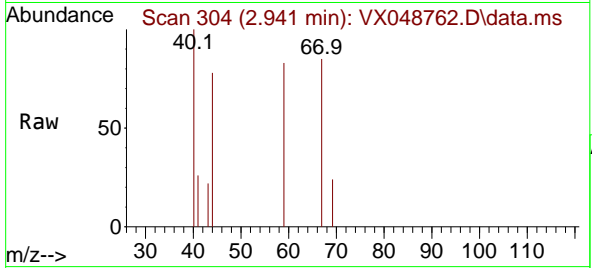




#11  
 Tert butyl alcohol  
 Concen: 2.230 ug/l  
 RT: 2.941 min Scan# 304  
 Delta R.T. 0.006 min  
 Lab File: VX048762.D  
 Acq: 08 Dec 2025 17:41

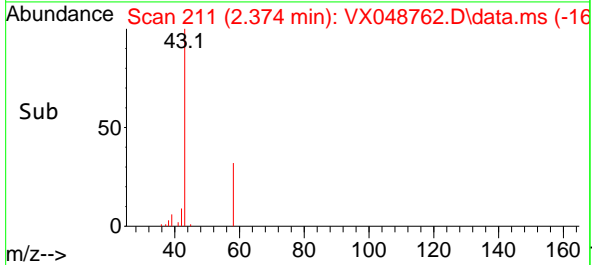
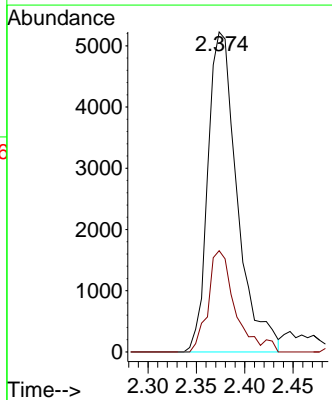
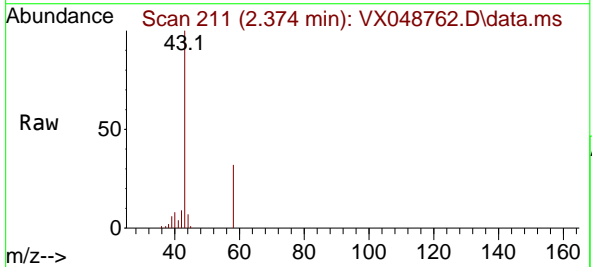
Instrument : MSVOA\_X  
 ClientSampleId : MW-16B-87.5-120525

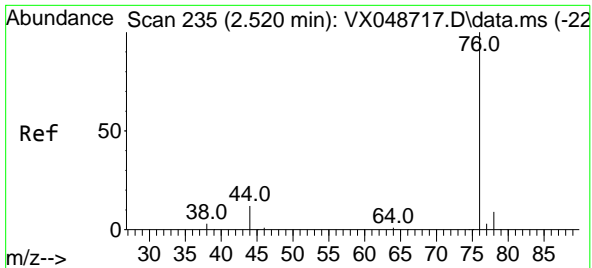
Tgt Ion: 59 Resp: 599  
 Ion Ratio Lower Upper  
 59 100  
 57 0.0 8.1 12.1#



#16  
 Acetone  
 Concen: 17.324 ug/l  
 RT: 2.374 min Scan# 211  
 Delta R.T. 0.000 min  
 Lab File: VX048762.D  
 Acq: 08 Dec 2025 17:41

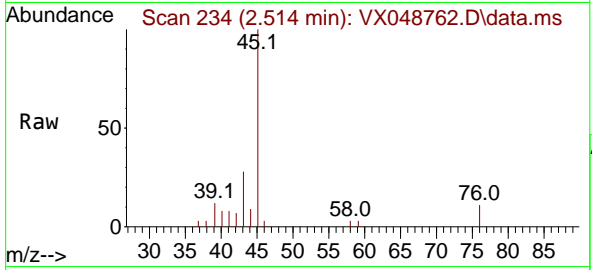
Tgt Ion: 43 Resp: 11034  
 Ion Ratio Lower Upper  
 43 100  
 58 31.7 25.0 37.4



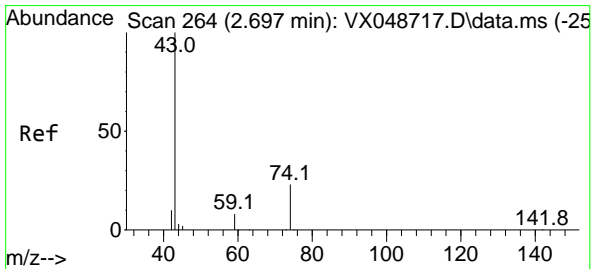
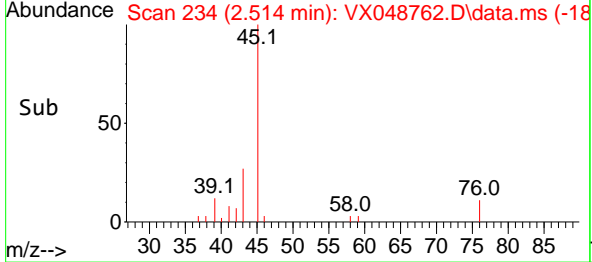
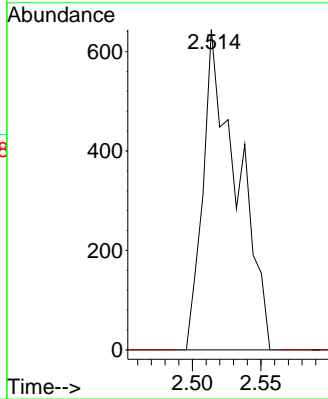


#17  
 Carbon Disulfide  
 Concen: 0.267 ug/l  
 RT: 2.514 min Scan# 21  
 Delta R.T. -0.006 min  
 Lab File: VX048762.D  
 Acq: 08 Dec 2025 17:41

Instrument : MSVOA\_X  
 ClientSampleId : MW-16B-87.5-120525

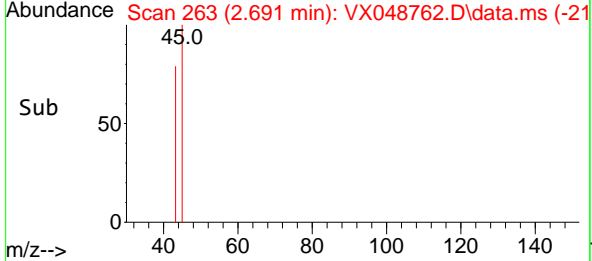
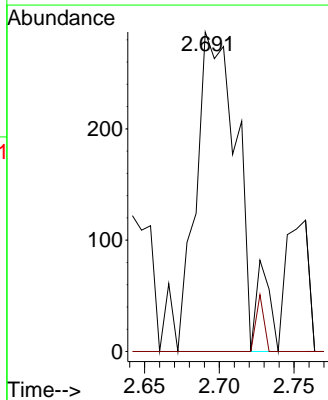
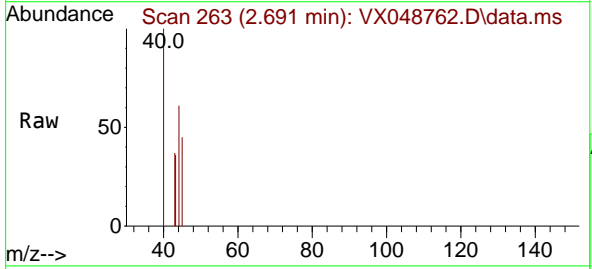


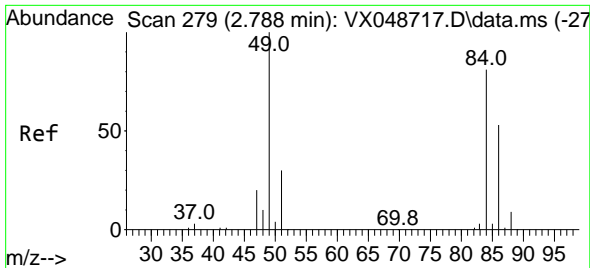
Tgt Ion: 76 Resp: 1117  
 Ion Ratio Lower Upper  
 76 100  
 78 0.0 7.4 11.2#



#18  
 Methyl Acetate  
 Concen: 0.320 ug/l  
 RT: 2.691 min Scan# 263  
 Delta R.T. -0.006 min  
 Lab File: VX048762.D  
 Acq: 08 Dec 2025 17:41

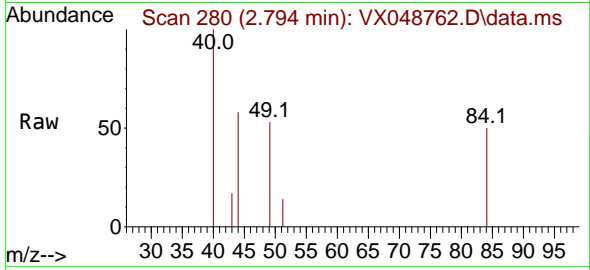
Tgt Ion: 43 Resp: 574  
 Ion Ratio Lower Upper  
 43 100  
 74 0.0 19.2 28.8#





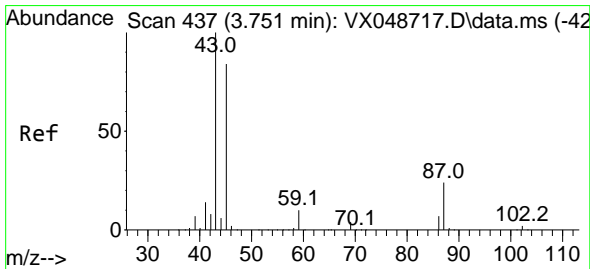
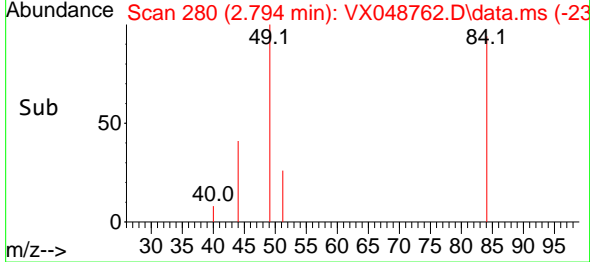
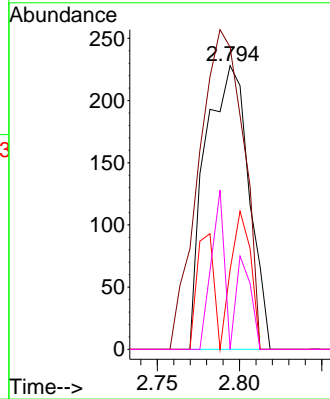
#20  
 Methylene Chloride  
 Concen: 0.264 ug/l  
 RT: 2.794 min Scan# 21  
 Delta R.T. 0.006 min  
 Lab File: VX048762.D  
 Acq: 08 Dec 2025 17:41

Instrument : MSVOA\_X  
 ClientSampleId : MW-16B-87.5-120525

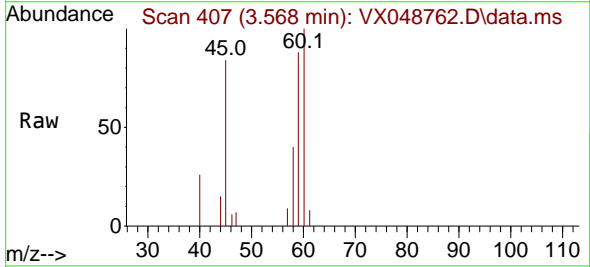


Tgt Ion: 84 Resp: 420

Ion	Ratio	Lower	Upper
84	100		
49	106.6	98.7	148.1
51	28.1	29.4	44.2#
86	0.0	52.5	78.7#

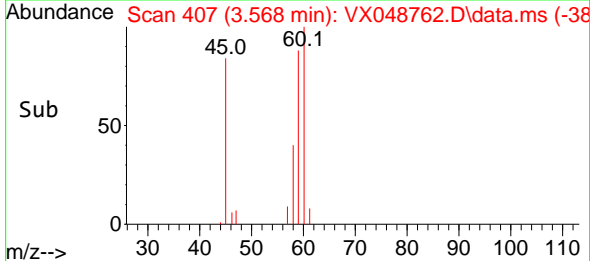
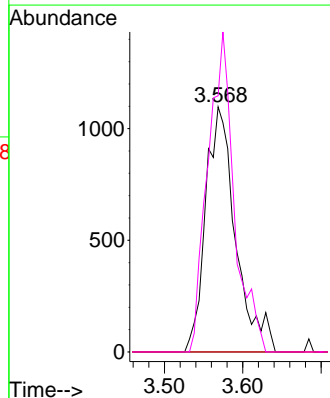


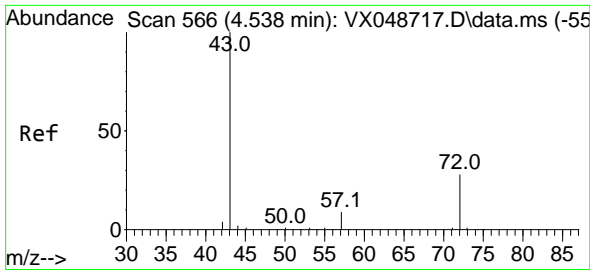
#22  
 Diisopropyl ether  
 Concen: 0.646 ug/l  
 RT: 3.568 min Scan# 407  
 Delta R.T. -0.183 min  
 Lab File: VX048762.D  
 Acq: 08 Dec 2025 17:41



Tgt Ion: 45 Resp: 2918

Ion	Ratio	Lower	Upper
45	100		
43	0.0	94.9	142.3#
87	0.0	23.2	34.8#
59	104.5	9.3	13.9#

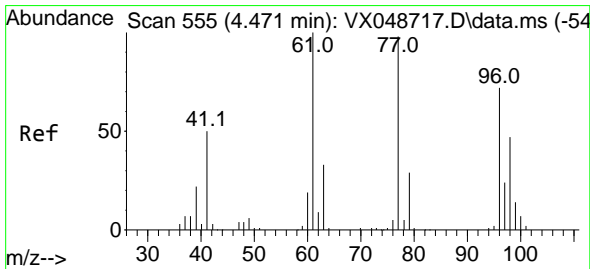
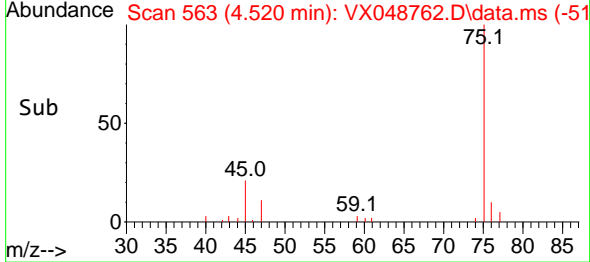
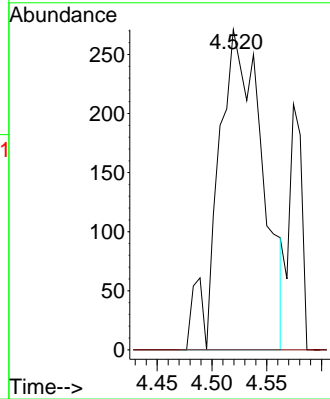
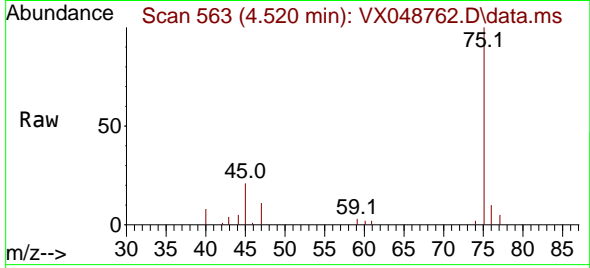




#25  
 2-Butanone  
 Concen: 0.807 ug/l  
 RT: 4.520 min Scan# 563  
 Delta R.T. -0.018 min  
 Lab File: VX048762.D  
 Acq: 08 Dec 2025 17:41

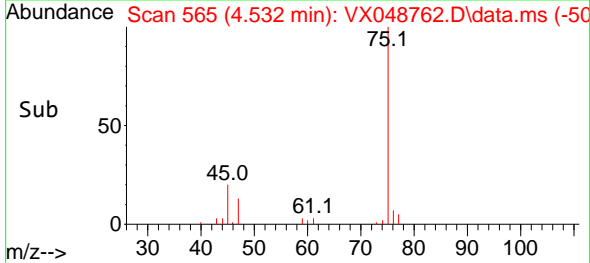
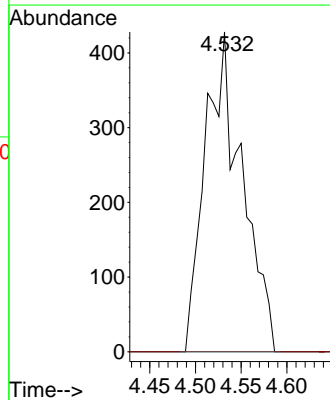
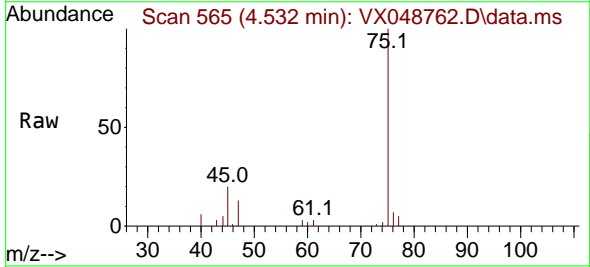
Instrument : MSVOA\_X  
 ClientSampleId : MW-16B-87.5-120525

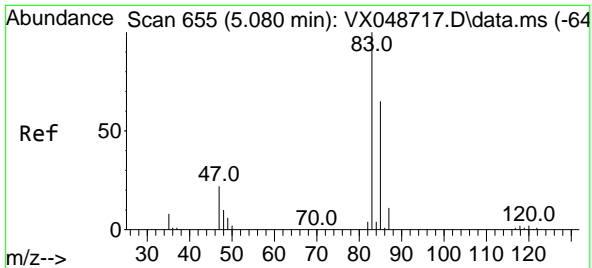
Tgt Ion: 43 Resp: 759  
 Ion Ratio Lower Upper  
 43 100  
 72 0.0 22.6 34.0#



#26  
 2,2-Dichloropropane  
 Concen: 0.538 ug/l  
 RT: 4.532 min Scan# 565  
 Delta R.T. 0.061 min  
 Lab File: VX048762.D  
 Acq: 08 Dec 2025 17:41

Tgt Ion: 77 Resp: 1200  
 Ion Ratio Lower Upper  
 77 100  
 97 0.0 11.6 34.8#

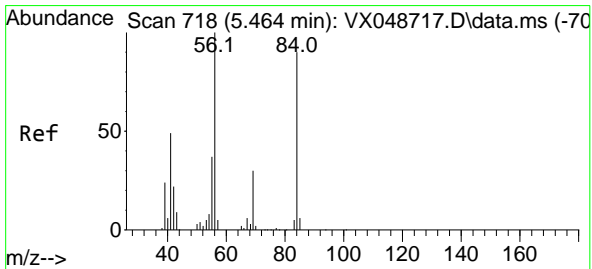
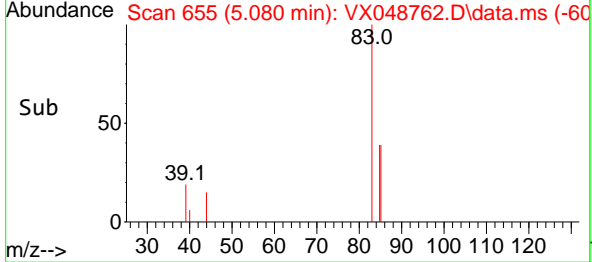
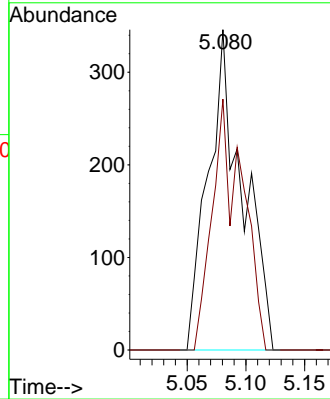
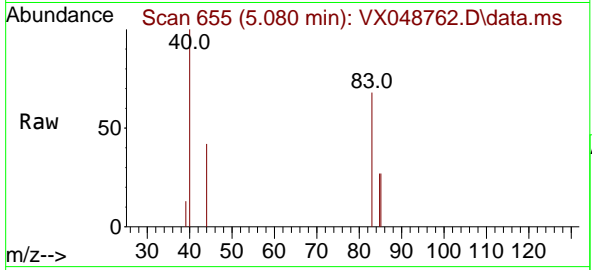




#30  
 Chloroform  
 Concen: 0.261 ug/l  
 RT: 5.080 min Scan# 61  
 Delta R.T. 0.000 min  
 Lab File: VX048762.D  
 Acq: 08 Dec 2025 17:41

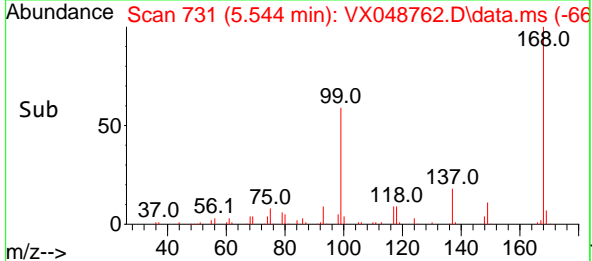
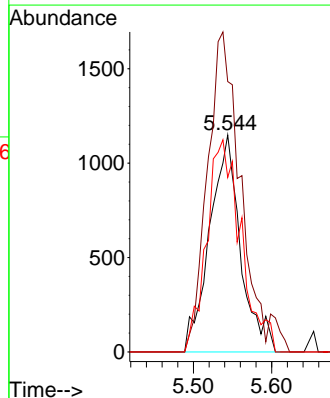
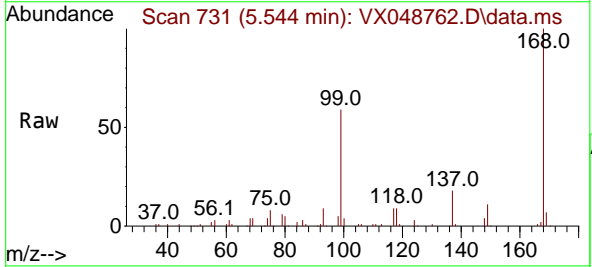
Instrument : MSVOA\_X  
 ClientSampleId : MW-16B-87.5-120525

Tgt Ion: 83 Resp: 704  
 Ion Ratio Lower Upper  
 83 100  
 85 78.3 52.1 78.1#

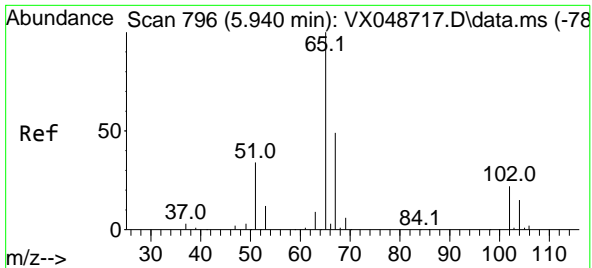


#31  
 Cyclohexane  
 Concen: 1.398 ug/l  
 RT: 5.544 min Scan# 731  
 Delta R.T. 0.079 min  
 Lab File: VX048762.D  
 Acq: 08 Dec 2025 17:41

Tgt Ion: 56 Resp: 3144  
 Ion Ratio Lower Upper  
 56 100  
 69 124.6 24.2 36.2#  
 84 80.5 72.1 108.1

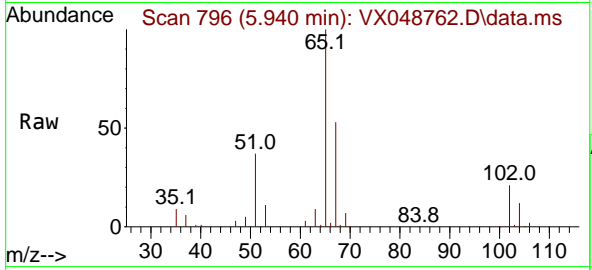




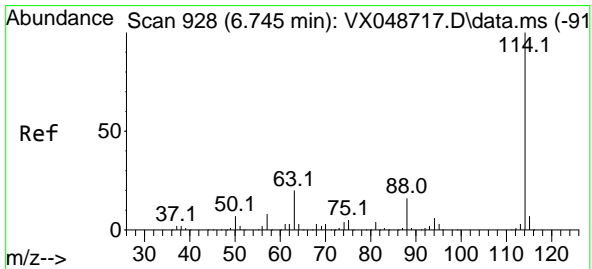
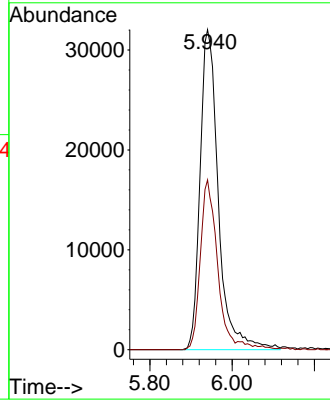
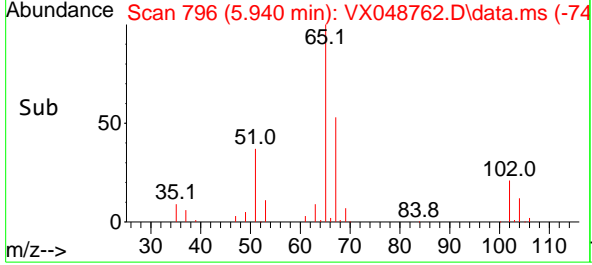


#33  
 1,2-Dichloroethane-d4  
 Concen: 59.427 ug/l  
 RT: 5.940 min Scan# 796  
 Delta R.T. 0.000 min  
 Lab File: VX048762.D  
 Acq: 08 Dec 2025 17:41

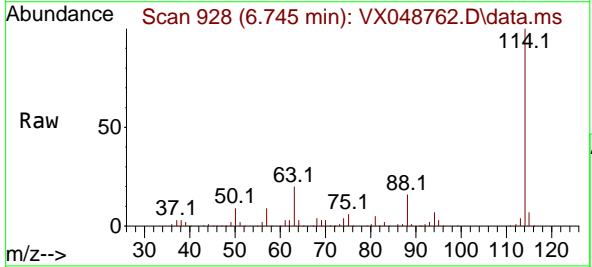
Instrument : MSVOA\_X  
 ClientSampleId : MW-16B-87.5-120525



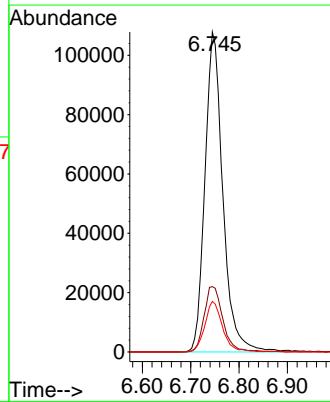
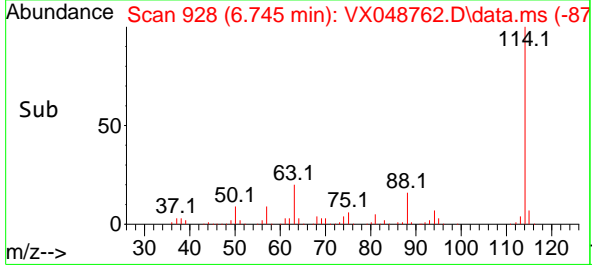
Tgt Ion: 65 Resp: 98874  
 Ion Ratio Lower Upper  
 65 100  
 67 50.8 0.0 107.4

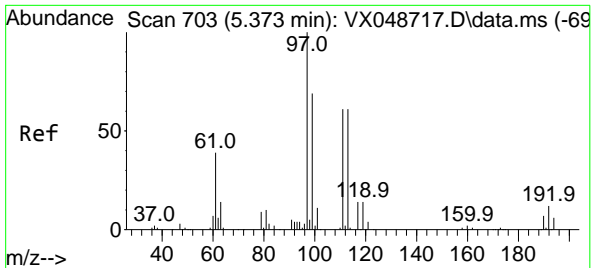


#34  
 1,4-Difluorobenzene  
 Concen: 50.000 ug/l  
 RT: 6.745 min Scan# 928  
 Delta R.T. 0.000 min  
 Lab File: VX048762.D  
 Acq: 08 Dec 2025 17:41



Tgt Ion: 114 Resp: 277457  
 Ion Ratio Lower Upper  
 114 100  
 63 20.4 0.0 39.0  
 88 15.8 0.0 31.8

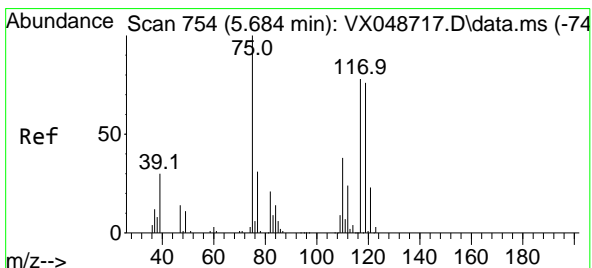
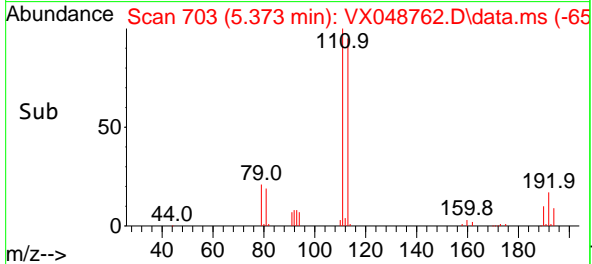
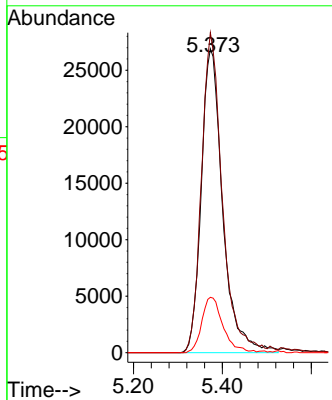
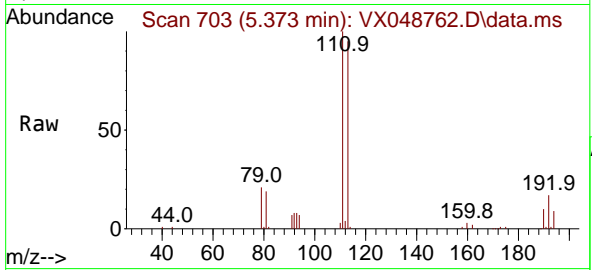




#35  
 Dibromofluoromethane  
 Concen: 47.212 ug/l  
 RT: 5.373 min Scan# 703  
 Delta R.T. 0.000 min  
 Lab File: VX048762.D  
 Acq: 08 Dec 2025 17:41

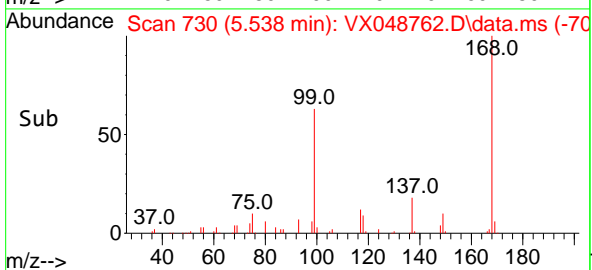
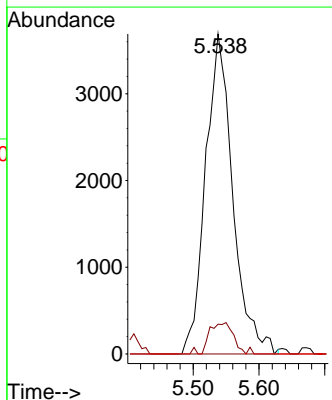
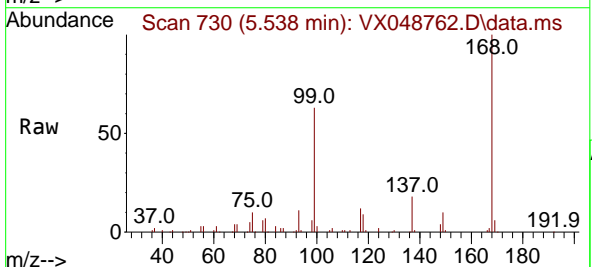
Instrument : MSVOA\_X  
 ClientSampleId : MW-16B-87.5-120525

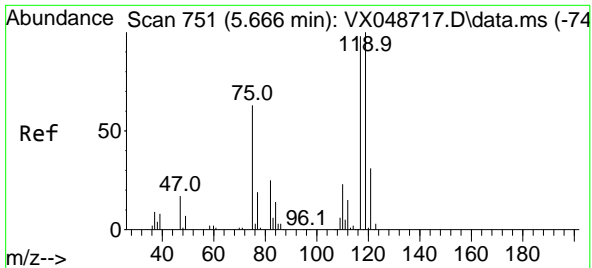
Tgt Ion	Resp	Lower	Upper
113	100		
111	102.3	79.5	119.3
192	18.0	16.1	24.1



#36  
 1,1-Dichloropropene  
 Concen: 4.072 ug/l  
 RT: 5.538 min Scan# 730  
 Delta R.T. -0.146 min  
 Lab File: VX048762.D  
 Acq: 08 Dec 2025 17:41

Tgt Ion	Resp	Lower	Upper
75	100		
110	8.3	18.6	55.8#
77	0.0	25.3	37.9#

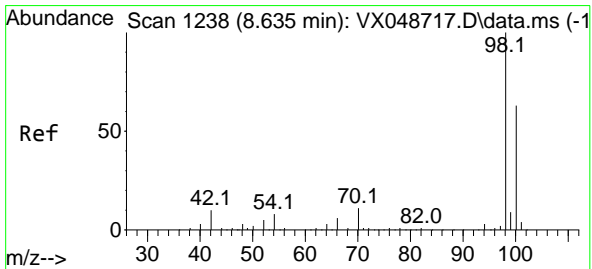
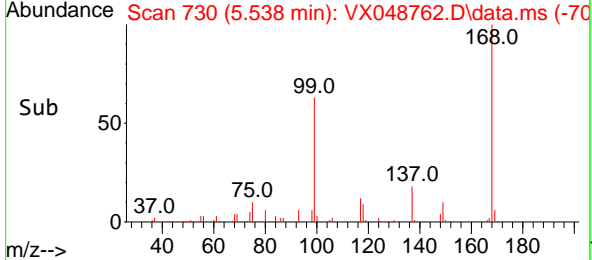
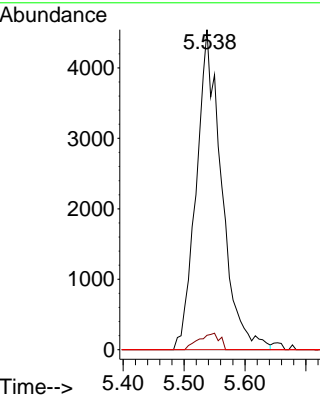
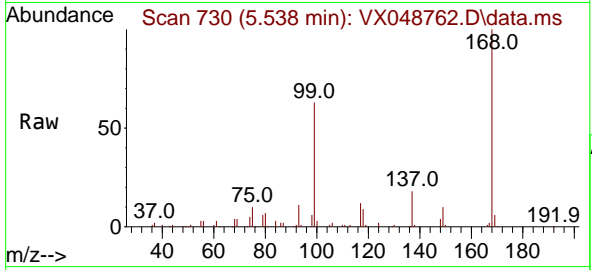




#38  
 Carbon Tetrachloride  
 Concen: 4.436 ug/l  
 RT: 5.538 min Scan# 71  
 Delta R.T. -0.128 min  
 Lab File: VX048762.D  
 Acq: 08 Dec 2025 17:41

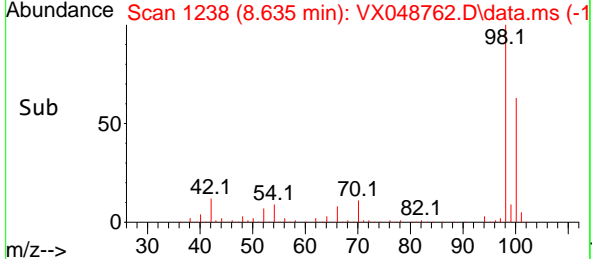
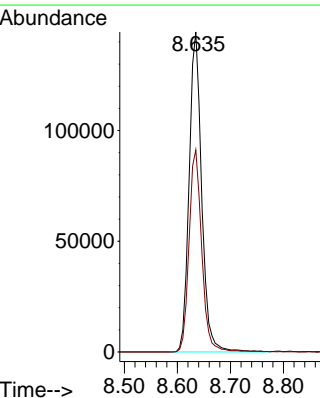
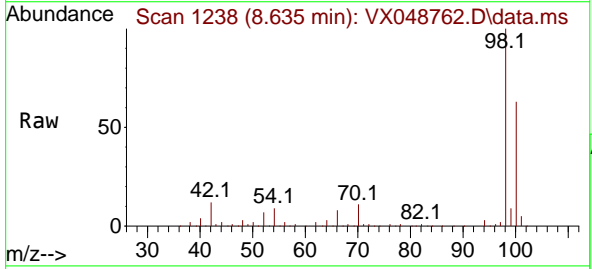
Instrument : MSVOA\_X  
 ClientSampleId : MW-16B-87.5-120525

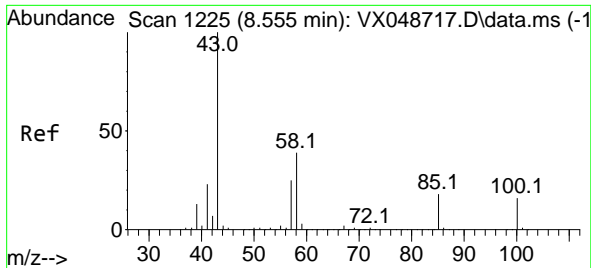
Tgt Ion	Resp	Lower	Upper
117	13146		
119	4.5	80.5	120.7#
121	0.0	25.4	38.0#



#50  
 Toluene-d8  
 Concen: 35.543 ug/l  
 RT: 8.635 min Scan# 1238  
 Delta R.T. 0.000 min  
 Lab File: VX048762.D  
 Acq: 08 Dec 2025 17:41

Tgt Ion	Resp	Lower	Upper
98	238014		
100	64.1	53.4	80.0

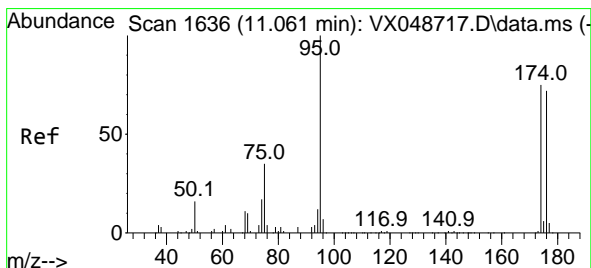
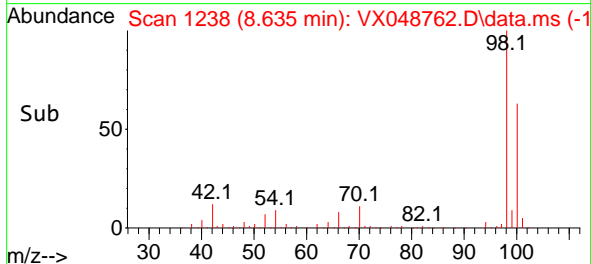
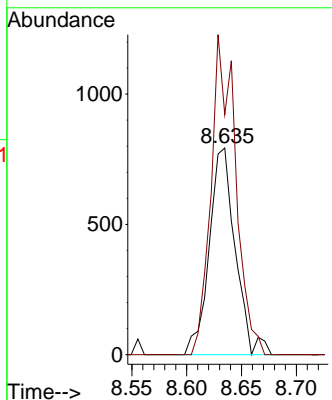
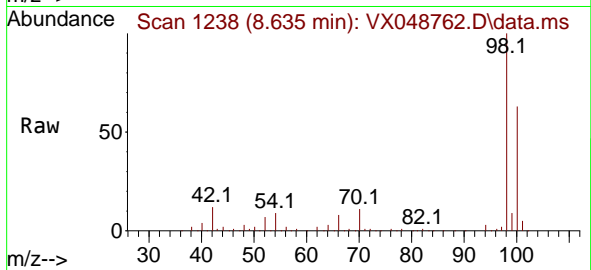




#51  
 4-Methyl-2-Pentanone  
 Concen: 0.447 ug/l  
 RT: 8.635 min Scan# 1238  
 Delta R.T. 0.079 min  
 Lab File: VX048762.D  
 Acq: 08 Dec 2025 17:41

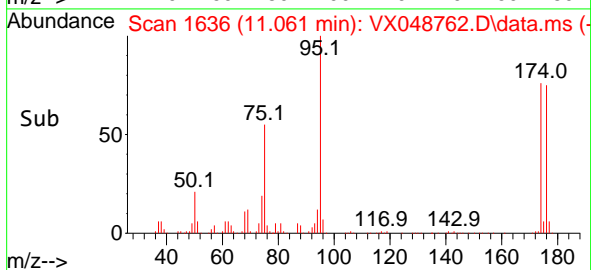
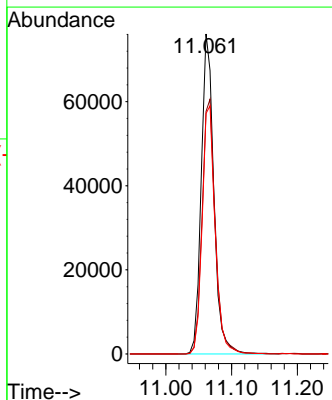
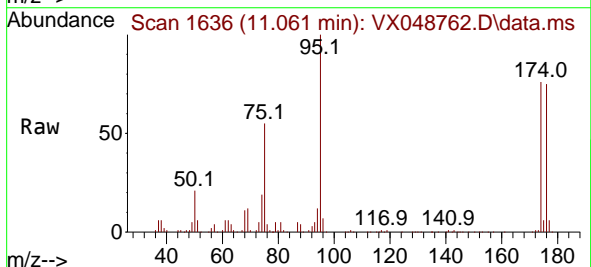
Instrument : MSVOA\_X  
 ClientSampleId : MW-16B-87.5-120525

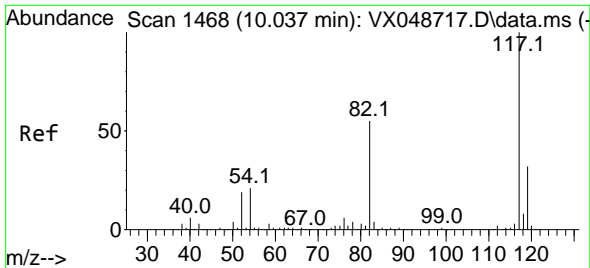
Tgt Ion: 43 Resp: 1314  
 Ion Ratio Lower Upper  
 43 100  
 58 145.7 32.2 48.4#



#62  
 4-Bromofluorobenzene  
 Concen: 43.843 ug/l  
 RT: 11.061 min Scan# 1636  
 Delta R.T. 0.000 min  
 Lab File: VX048762.D  
 Acq: 08 Dec 2025 17:41

Tgt Ion: 95 Resp: 101242  
 Ion Ratio Lower Upper  
 95 100  
 174 83.5 0.0 157.8  
 176 80.1 0.0 154.0



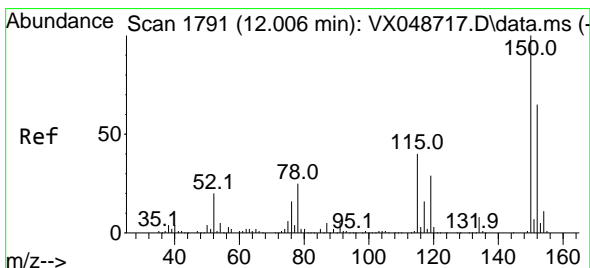
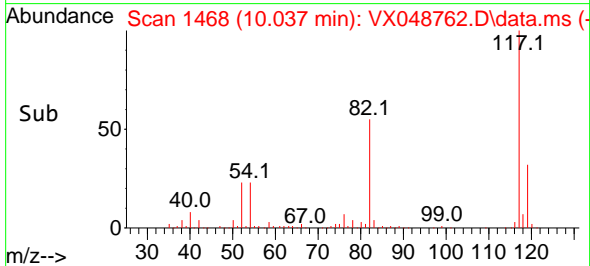
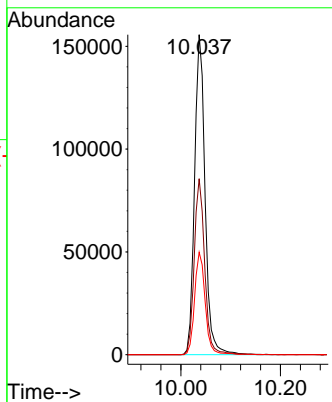
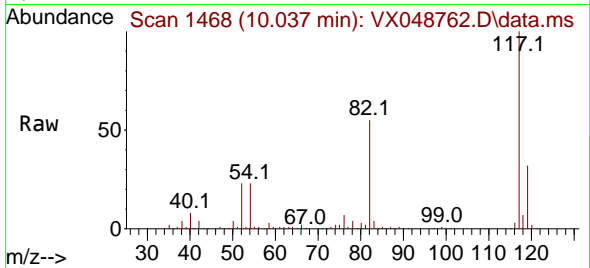


#63  
 Chlorobenzene-d5  
 Concen: 50.000 ug/l  
 RT: 10.037 min Scan# 1468  
 Delta R.T. 0.000 min  
 Lab File: VX048762.D  
 Acq: 08 Dec 2025 17:41

Instrument : MSVOA\_X  
 ClientSampleId : MW-16B-87.5-120525

Tgt Ion:117 Resp: 227659

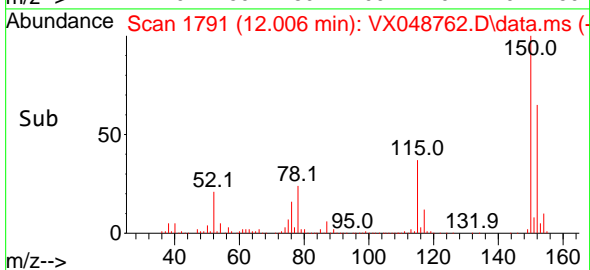
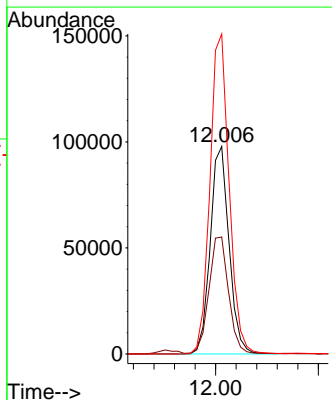
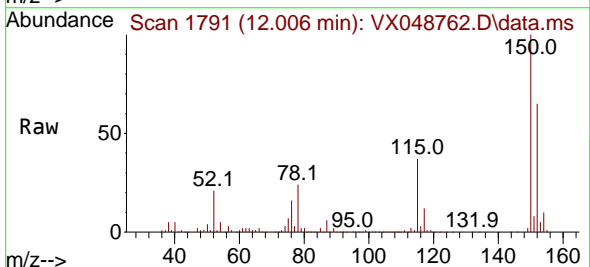
Ion	Ratio	Lower	Upper
117	100		
82	55.0	44.1	66.1
119	32.0	25.2	37.8

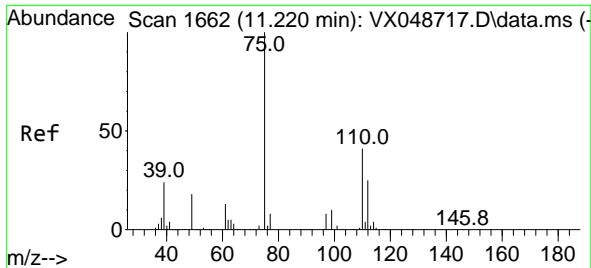


#72  
 1,4-Dichlorobenzene-d4  
 Concen: 50.000 ug/l  
 RT: 12.006 min Scan# 1791  
 Delta R.T. 0.000 min  
 Lab File: VX048762.D  
 Acq: 08 Dec 2025 17:41

Tgt Ion:152 Resp: 124497

Ion	Ratio	Lower	Upper
152	100		
115	58.9	42.1	126.4
150	156.9	0.0	347.8

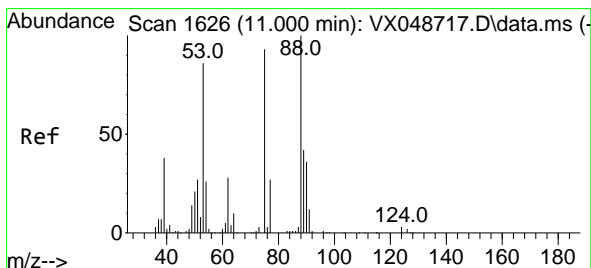
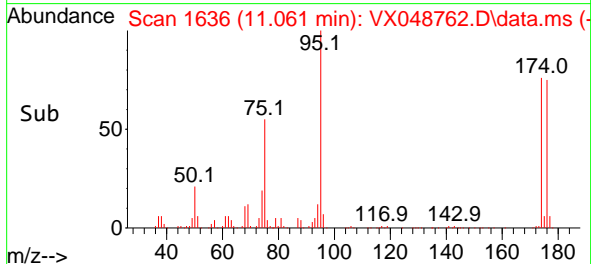
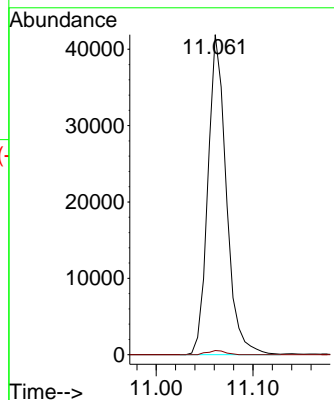
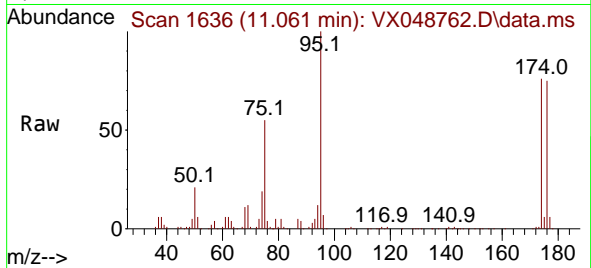




#76  
 1,2,3-Trichloropropane  
 Concen: 23.973 ug/l  
 RT: 11.061 min Scan# 1636  
 Delta R.T. -0.159 min  
 Lab File: VX048762.D  
 Acq: 08 Dec 2025 17:41

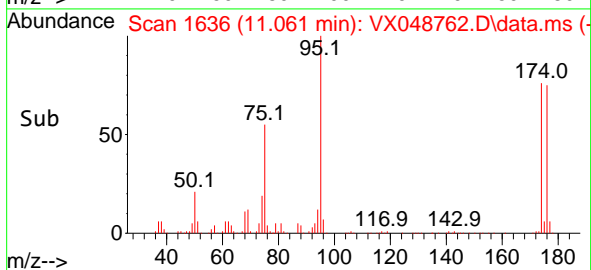
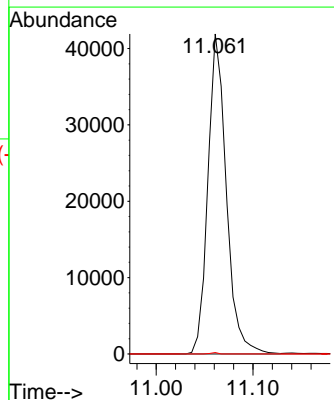
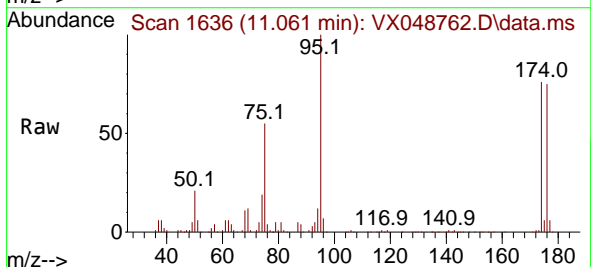
Instrument : MSVOA\_X  
 ClientSampleId : MW-16B-87.5-120525

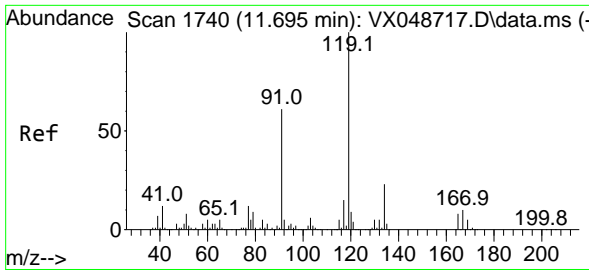
Tgt Ion: 75 Resp: 55589  
 Ion Ratio Lower Upper  
 75 100  
 77 1.3 24.3 73.0#



#81  
 trans-1,4-Dichloro-2-butene  
 Concen: 56.946 ug/l  
 RT: 11.061 min Scan# 1636  
 Delta R.T. 0.061 min  
 Lab File: VX048762.D  
 Acq: 08 Dec 2025 17:41

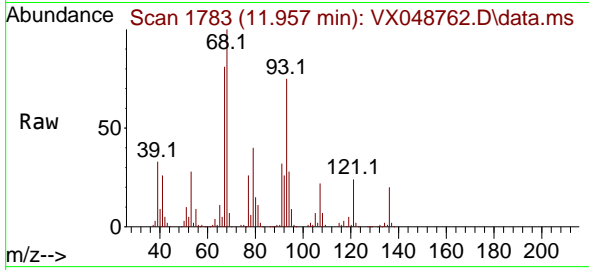
Tgt Ion: 75 Resp: 55589  
 Ion Ratio Lower Upper  
 75 100  
 53 0.0 79.9 119.9#  
 89 0.2 67.1 100.7#



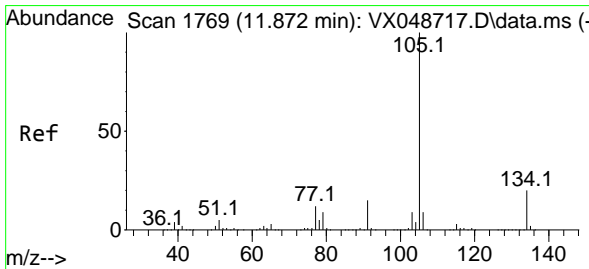
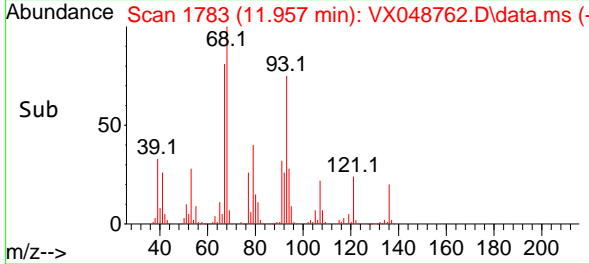
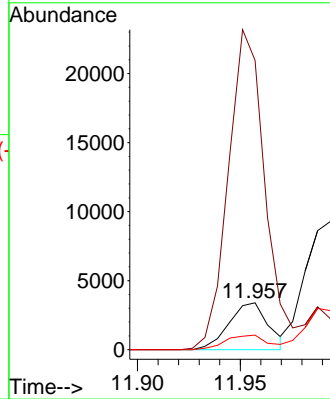


#83  
 tert-Butylbenzene  
 Concen: 0.632 ug/l  
 RT: 11.957 min Scan# 1783  
 Delta R.T. 0.262 min  
 Lab File: VX048762.D  
 Acq: 08 Dec 2025 17:41

Instrument : MSVOA\_X  
 ClientSampleId : MW-16B-87.5-120525

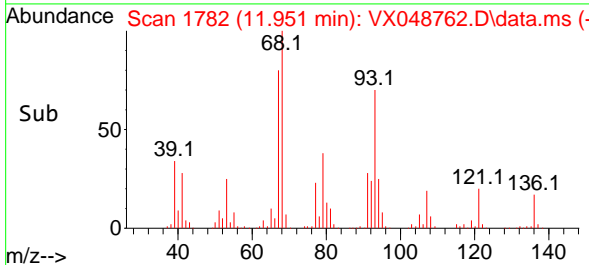
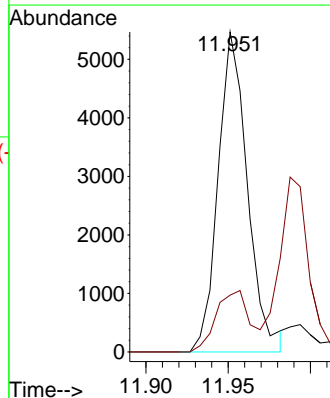
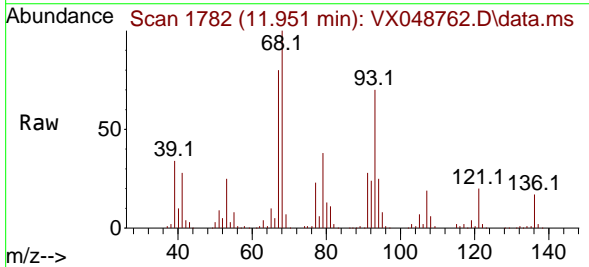


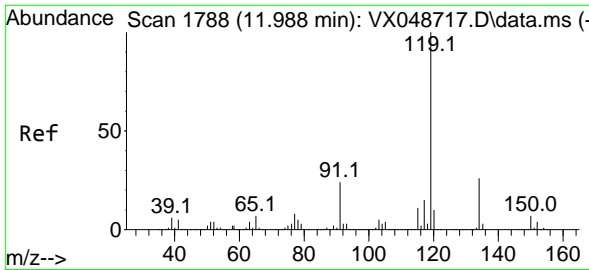
Tgt Ion:119 Resp: 4529  
 Ion Ratio Lower Upper  
 119 100  
 91 621.5 28.4 85.2#  
 134 33.4 11.2 33.5



#85  
 sec-Butylbenzene  
 Concen: 0.779 ug/l  
 RT: 11.951 min Scan# 1782  
 Delta R.T. 0.079 min  
 Lab File: VX048762.D  
 Acq: 08 Dec 2025 17:41

Tgt Ion:105 Resp: 6766  
 Ion Ratio Lower Upper  
 105 100  
 134 22.4 9.8 29.5



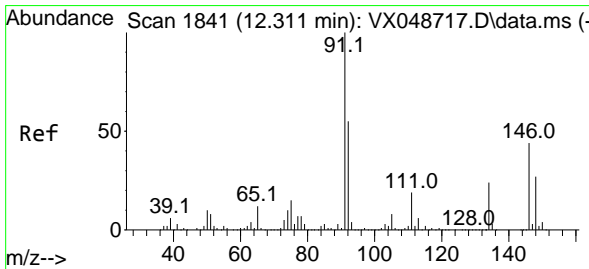
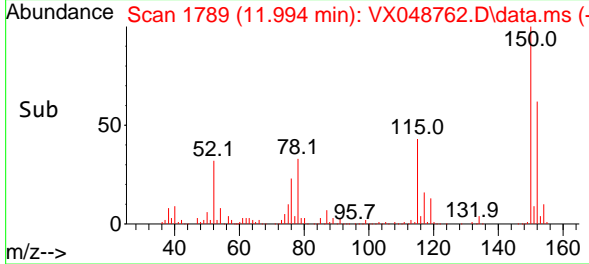
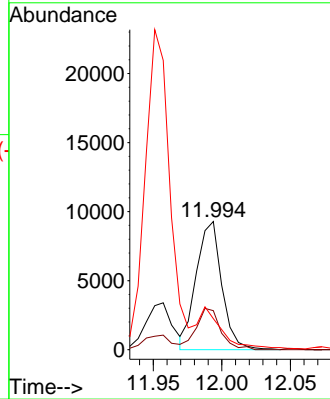
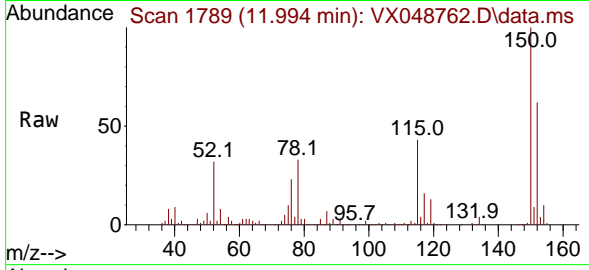


#86  
 p-Isopropyltoluene  
 Concen: 1.625 ug/l  
 RT: 11.994 min Scan# 1199  
 Delta R.T. 0.006 min  
 Lab File: VX048762.D  
 Acq: 08 Dec 2025 17:41

Instrument : MSVOA\_X  
 ClientSampleId : MW-16B-87.5-120525

Tgt Ion:119 Resp: 12066

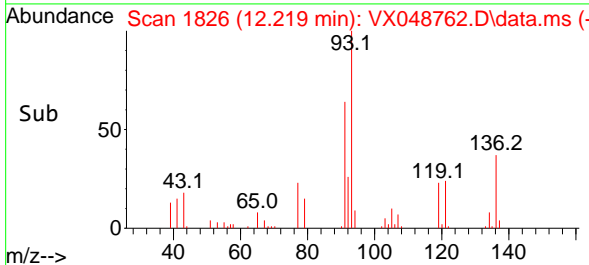
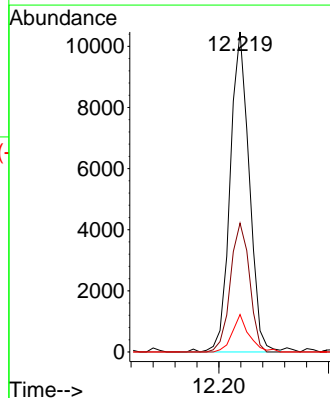
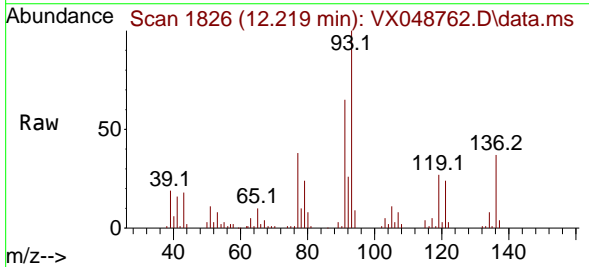
Ion	Ratio	Lower	Upper
119	100		
134	30.7	13.1	39.3
91	26.4	11.8	35.4



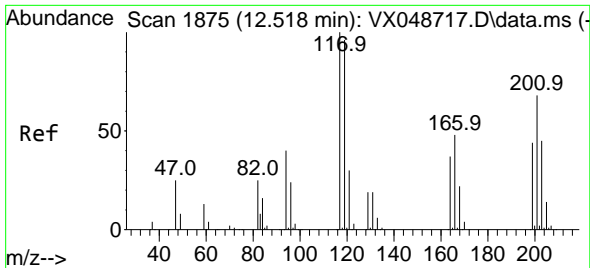
#89  
 n-Butylbenzene  
 Concen: 1.819 ug/l  
 RT: 12.219 min Scan# 1826  
 Delta R.T. -0.091 min  
 Lab File: VX048762.D  
 Acq: 08 Dec 2025 17:41

Tgt Ion: 91 Resp: 12640

Ion	Ratio	Lower	Upper
91	100		
92	40.4	27.1	81.3
134	10.3	12.9	38.6#



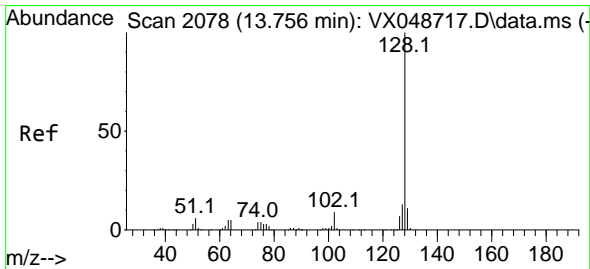
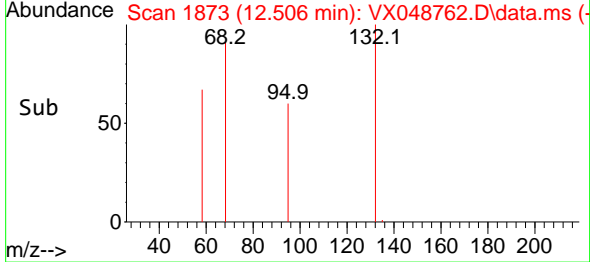
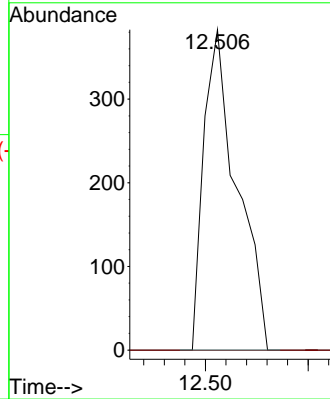
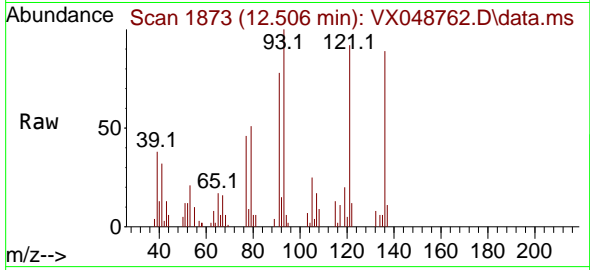




#90  
 Hexachloroethane  
 Concen: 0.284 ug/l  
 RT: 12.506 min Scan# 1875  
 Delta R.T. -0.012 min  
 Lab File: VX048762.D  
 Acq: 08 Dec 2025 17:41

Instrument : MSVOA\_X  
 ClientSampleId : MW-16B-87.5-120525

Tgt Ion:117 Resp: 431  
 Ion Ratio Lower Upper  
 117 100  
 201 0.0 36.4 109.1#



#95  
 Naphthalene  
 Concen: Below Cal  
 RT: 13.756 min Scan# 2078  
 Delta R.T. 0.000 min  
 Lab File: VX048762.D  
 Acq: 08 Dec 2025 17:41

Tgt Ion:128 Resp: 216  
 Ion Ratio Lower Upper  
 128 100  
 127 142.6 10.2 15.2#  
 129 0.0 8.6 13.0#

