

Data Path : Z:\VOASRV\HPCHEM1\MSVOA X\DATA\VX120919\  
 Data File : VX0137852.D  
 Acq On : 09 Dec 2019 15:23  
 Operator : JC/SP  
 Sample : K6184-21  
 Misc : 5.0mL/MSVOA X/WATER  
 ALS Vial : 8 Sample Multiplier: 1

Instrument :  
 MSVOA\_X  
 ClientSampleId :

Quant Time: Dec 10 03:59:24 2019  
 Quant Method : Z:\VOASRV\HPCHEM1\MSVOA\_X\METHOD\82X112619W.M  
 Quant Title : SW846 8260  
 QLast Update : Tue Nov 26 15:53:00 2019  
 Response via : Initial Calibration

Internal Standards	R.T.	QIon	Response	Conc	Units	Dev(Min)
1) Pentafluorobenzene	5.65	168	616214	50.00	ug/l	0.00
34) 1,4-Difluorobenzene	6.85	114	941664	50.00	ug/l	0.00
63) Chlorobenzene-d5	10.11	117	831164	50.00	ug/l	0.00
72) 1,4-Dichlorobenzene-d4	12.07	152	359705	50.00	ug/l	0.00

## System Monitoring Compounds

33) 1,2-Dichloroethane-d4	6.05	65	344139	48.11	ug/l	0.00
Spiked Amount	50.000		Recovery	=	96.22%	
35) Dibromofluoromethane	5.49	113	278762	47.89	ug/l	0.00
Spiked Amount	50.000		Recovery	=	95.78%	
50) Toluene-d8	8.71	98	1110865	48.98	ug/l	0.00
Spiked Amount	50.000		Recovery	=	97.96%	
62) 4-Bromofluorobenzene	11.14	95	365939	44.74	ug/l	0.00
Spiked Amount	50.000		Recovery	=	89.48%	

## Target Compounds

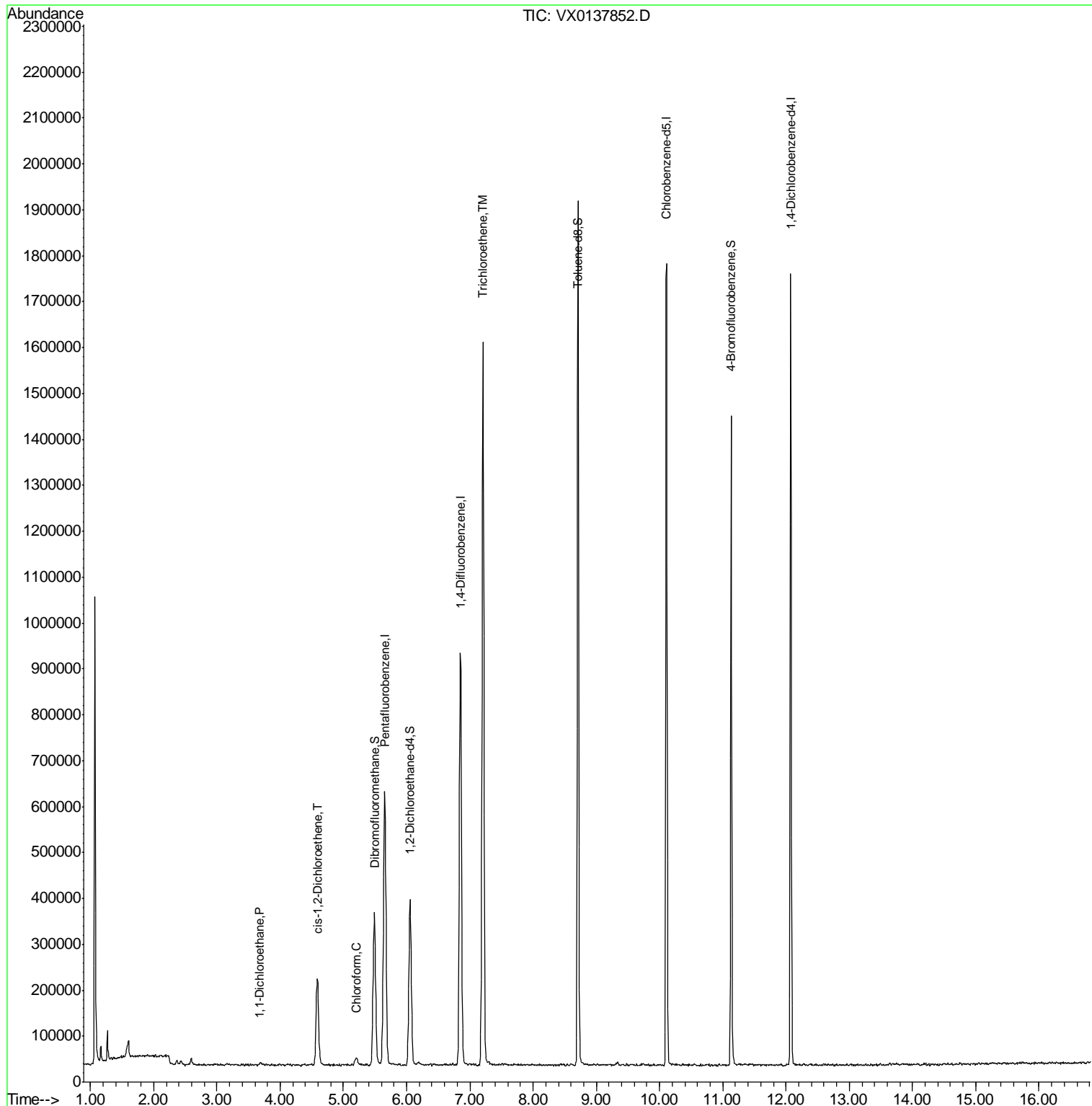
						Qvalue
24) 1,1-Dichloroethane	3.68	63	7368	0.658	ug/l #	92
27) cis-1,2-Dichloroethene	4.58	96	123946	16.894	ug/l	89
30) Chloroform	5.20	83	20571	1.811	ug/l	89
44) Trichloroethene	7.21	130	630308	88.217	ug/l	97

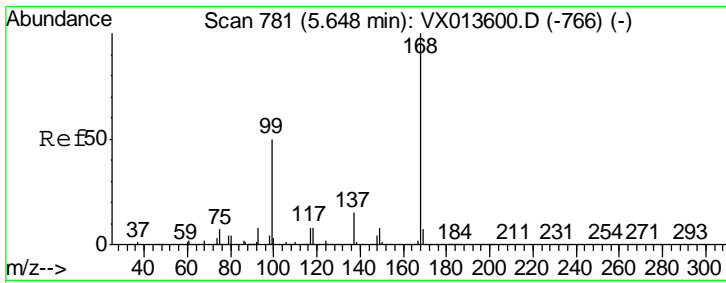
(#) = qualifier out of range (m) = manual integration (+) = signals summed

Data Path : Z:\VOASRV\HPCHEM1\MSVOA X\DATA\VX120919\  
 Data File : VX0137852.D  
 Acq On : 09 Dec 2019 15:23  
 Operator : JC/SP  
 Sample : K6184-21  
 Misc : 5.0mL/MSVOA X/WATER  
 ALS Vial : 8 Sample Multiplier: 1

Instrument :  
 MSVOA\_X  
 ClientSampled :

Quant Time: Dec 10 03:59:24 2019  
 Quant Method : Z:\VOASRV\HPCHEM1\MSVOA\_X\METHOD\82X112619W.M  
 Quant Title : SW846 8260  
 QLast Update : Tue Nov 26 15:53:00 2019  
 Response via : Initial Calibration

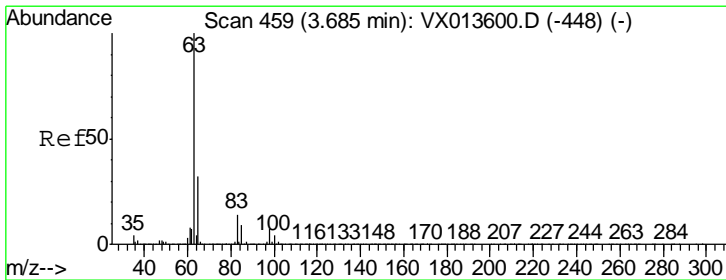
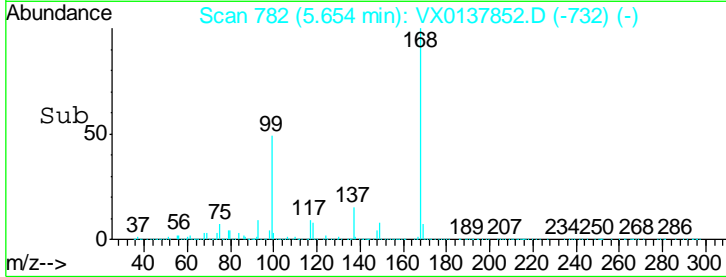
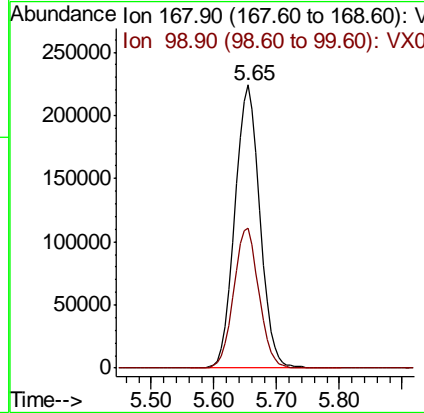
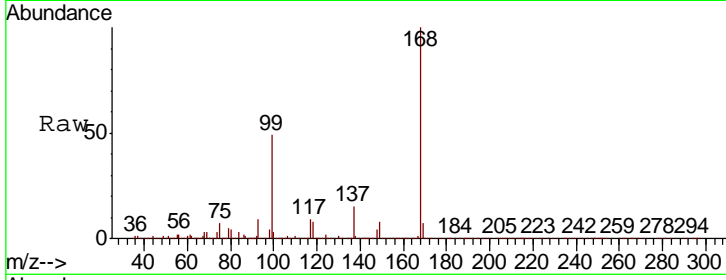




#1  
 Pentafluorobenzene  
 Concen: 50.000 ug/l  
 RT: 5.65 min Scan# 782  
 Delta R.T. 0.01 min  
 Lab File: VX0137852.D  
 Acq: 09 Dec 2019 15:23

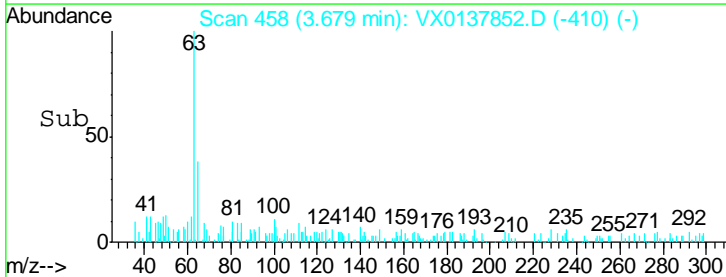
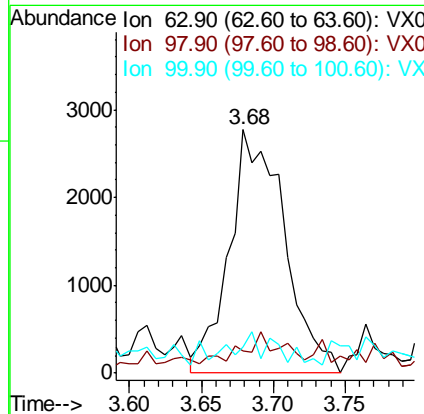
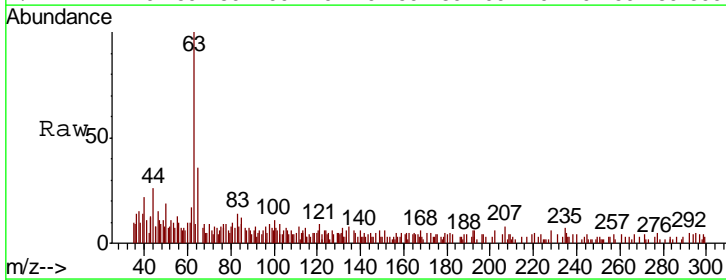
Instrument :  
 MSVOA\_X  
 ClientSampled :

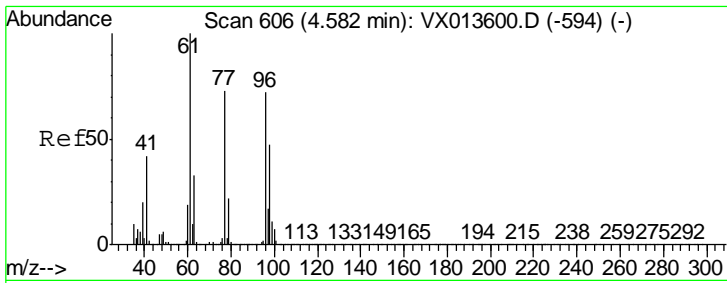
Tgt Ion	Resp	Lower	Upper
168	100		
99	49.4	39.8	59.8



#24  
 1,1-Dichloroethane  
 Concen: 0.658 ug/l  
 RT: 3.68 min Scan# 458  
 Delta R.T. -0.01 min  
 Lab File: VX0137852.D  
 Acq: 09 Dec 2019 15:23

Tgt Ion	Resp	Lower	Upper
63	100		
98	4.1	3.5	10.4
100	7.1	2.1	6.3#

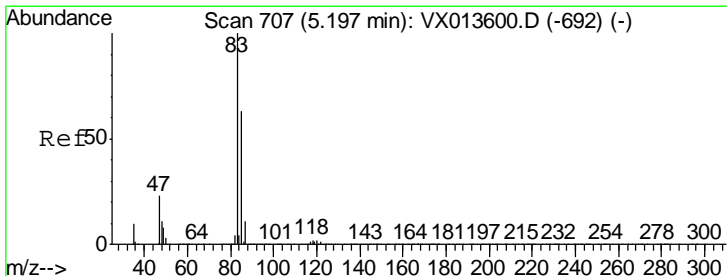
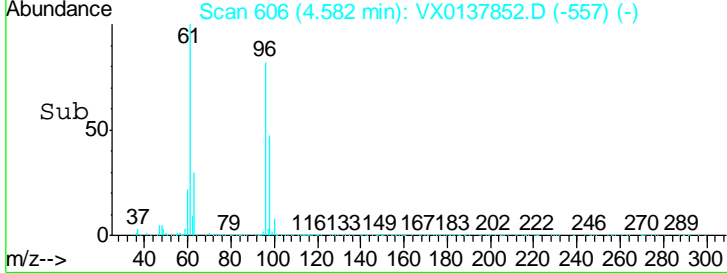
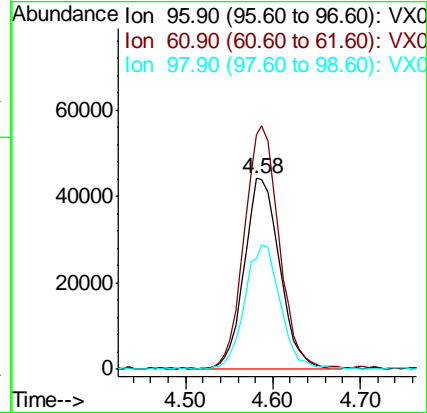
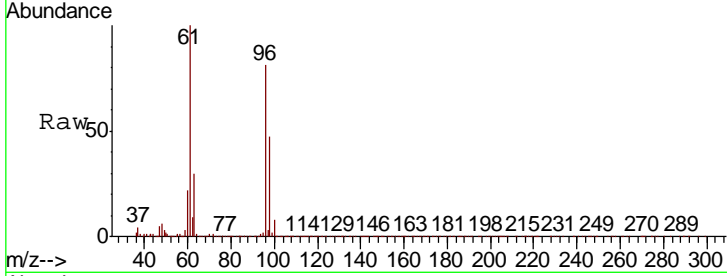




#27  
 cis-1,2-Dichloroethene  
 Concen: 16.894 ug/l  
 RT: 4.58 min Scan# 606  
 Delta R.T. -0.00 min  
 Lab File: VX0137852.D  
 Acq: 09 Dec 2019 15:23

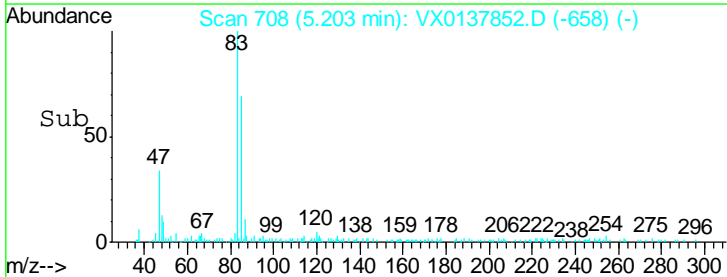
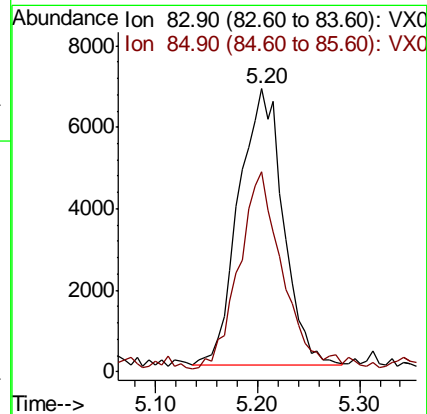
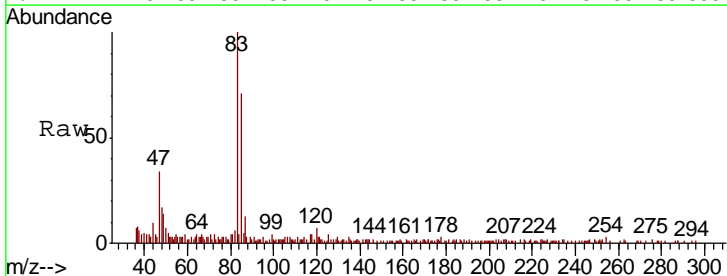
Instrument :  
 MSVOA\_X  
 ClientSampled :

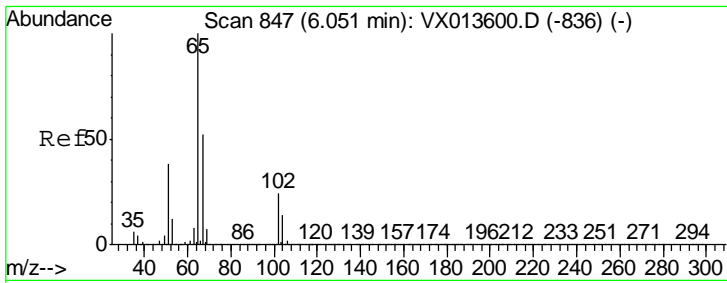
Tgt Ion	Resp	Lower	Upper
96	123946		
61	124.5	0.0	286.4
98	65.7	0.0	127.4



#30  
 Chloroform  
 Concen: 1.811 ug/l  
 RT: 5.20 min Scan# 708  
 Delta R.T. 0.01 min  
 Lab File: VX0137852.D  
 Acq: 09 Dec 2019 15:23

Tgt Ion	Resp	Lower	Upper
83	20571		
85	71.5	50.2	75.4

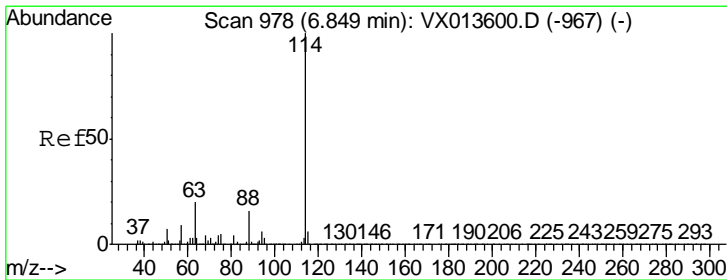
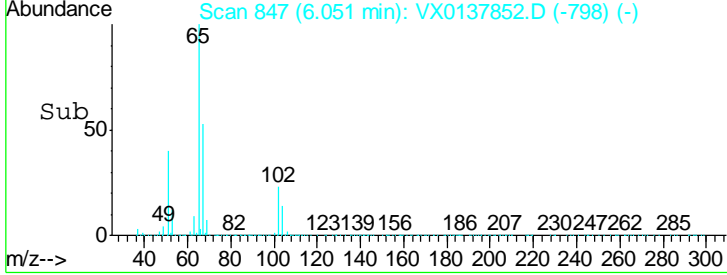
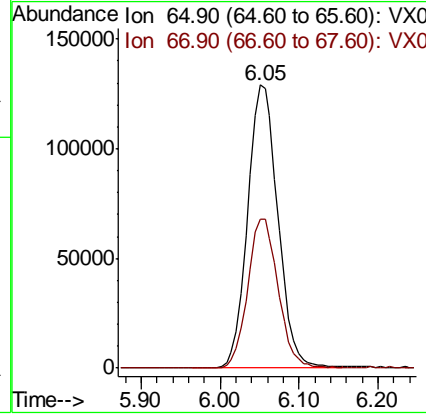
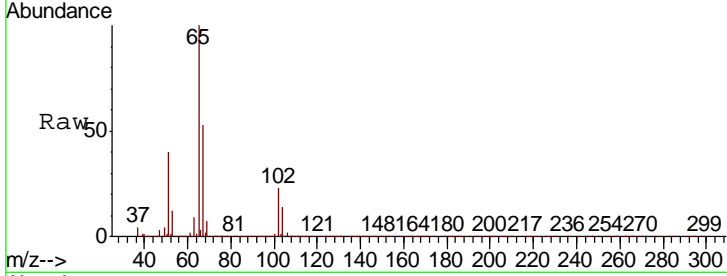




#33  
 1,2-Dichloroethane-d4  
 Concen: 48.112 ug/l  
 RT: 6.05 min Scan# 847  
 Delta R.T. -0.00 min  
 Lab File: VX0137852.D  
 Acq: 09 Dec 2019 15:23

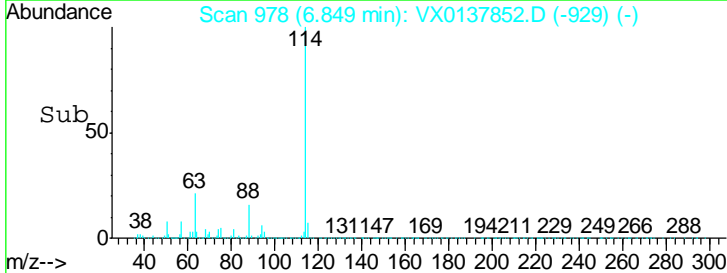
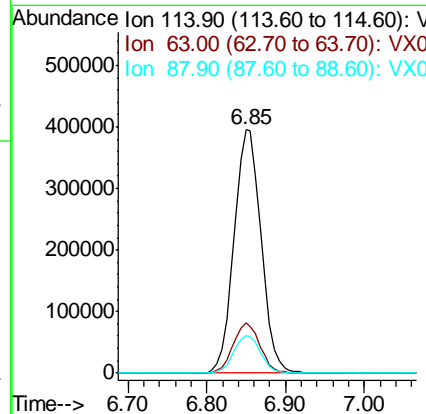
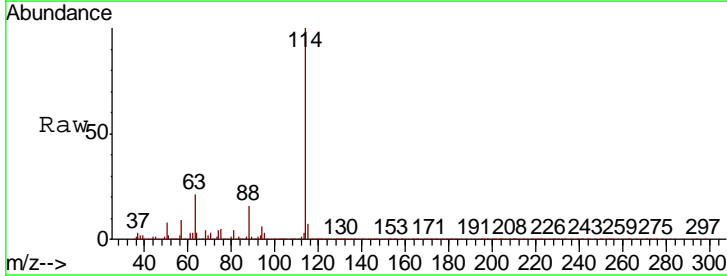
Instrument :  
 MSVOA\_X  
 ClientSampled :

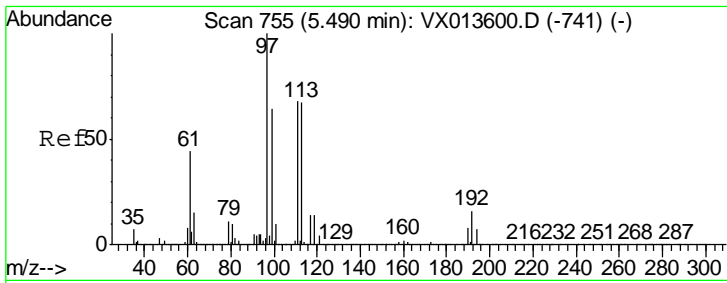
Tgt Ion	Resp	Lower	Upper
65	344139		
67	52.6	0.0	104.4



#34  
 1,4-Difluorobenzene  
 Concen: 50.000 ug/l  
 RT: 6.85 min Scan# 978  
 Delta R.T. -0.00 min  
 Lab File: VX0137852.D  
 Acq: 09 Dec 2019 15:23

Tgt Ion	Resp	Lower	Upper
114	941664		
63	20.7	0.0	39.6
88	15.7	0.0	31.4

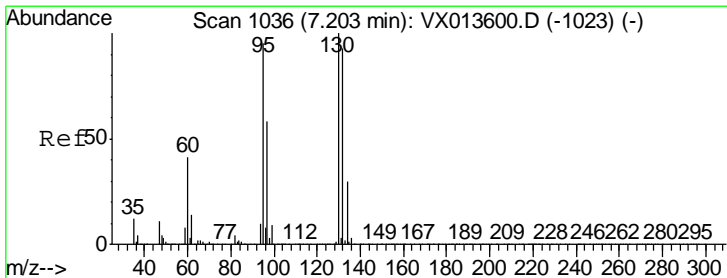
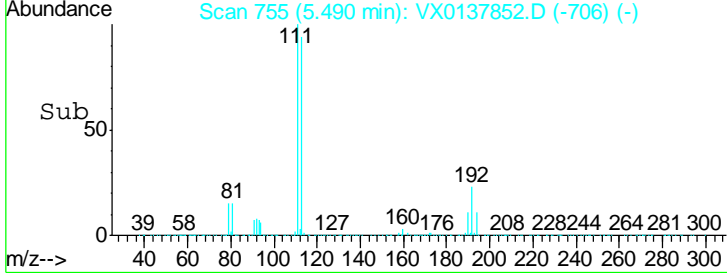
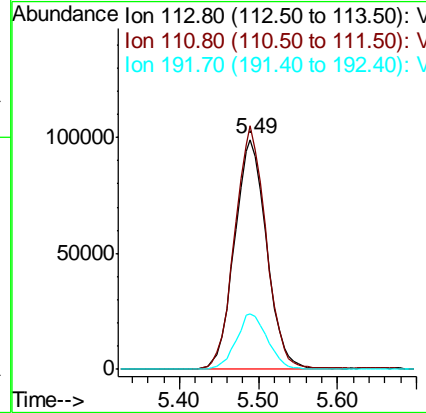
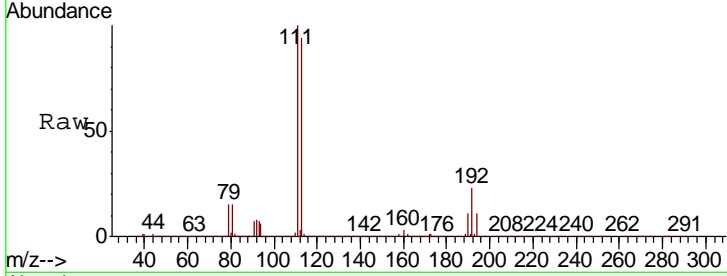




#35  
 Dibromofluoromethane  
 Concen: 47.885 ug/l  
 RT: 5.49 min Scan# 755  
 Delta R.T. -0.00 min  
 Lab File: VX0137852.D  
 Acq: 09 Dec 2019 15:23

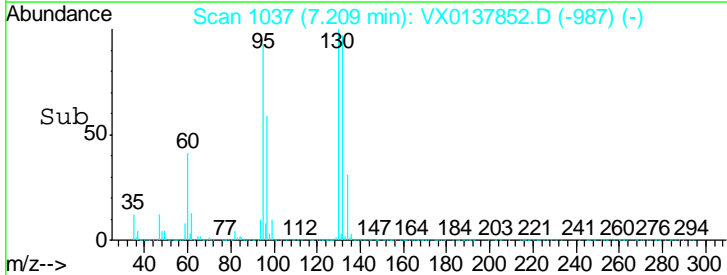
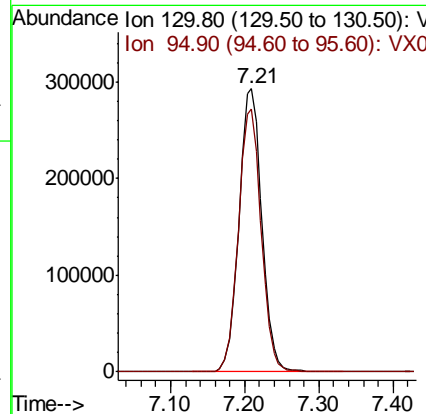
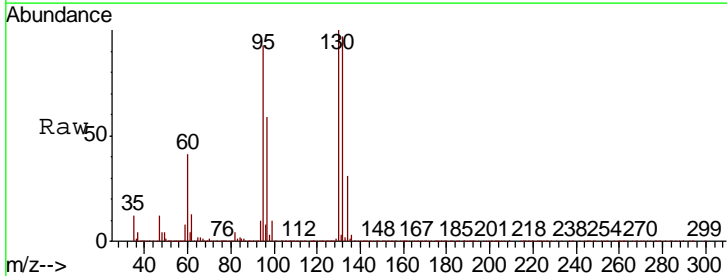
Instrument :  
 MSVOA\_X  
 ClientSampled :

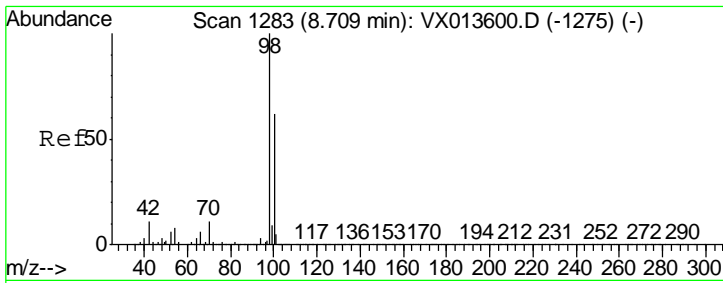
Tgt Ion	Resp	Lower	Upper
113	278762		
111	103.5	83.6	125.4
192	23.6	19.2	28.8



#44  
 Trichloroethene  
 Concen: 88.217 ug/l  
 RT: 7.21 min Scan# 1037  
 Delta R.T. 0.01 min  
 Lab File: VX0137852.D  
 Acq: 09 Dec 2019 15:23

Tgt Ion	Resp	Lower	Upper
130	630308		
95	92.9	0.0	190.8

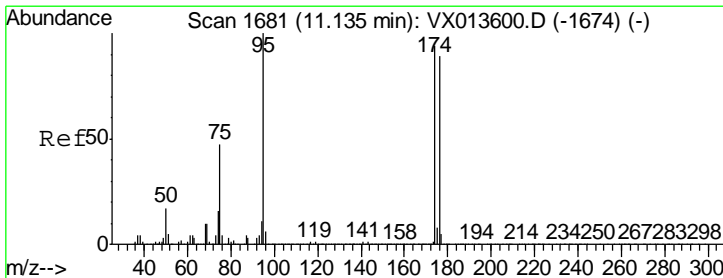
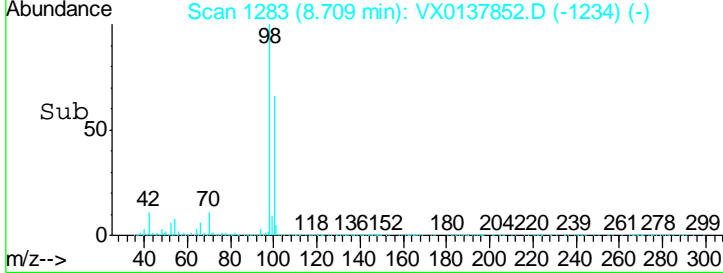
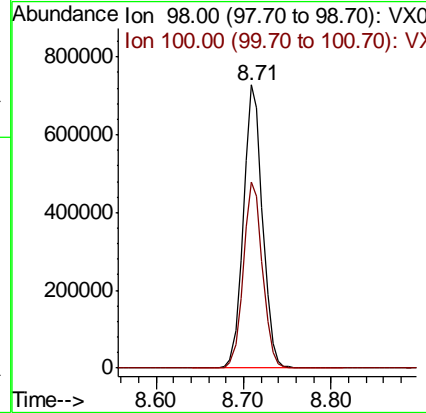
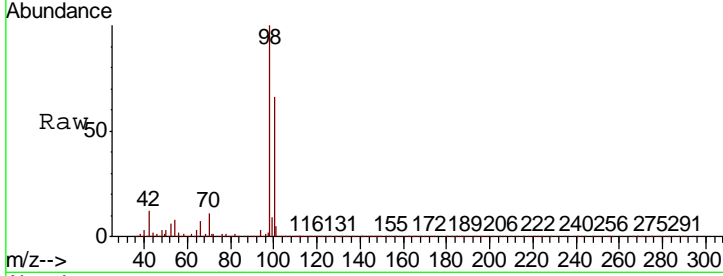




#50  
 Toluene-d8  
 Concen: 48.977 ug/l  
 RT: 8.71 min Scan# 1283  
 Delta R.T. -0.00 min  
 Lab File: VX0137852.D  
 Acq: 09 Dec 2019 15:23

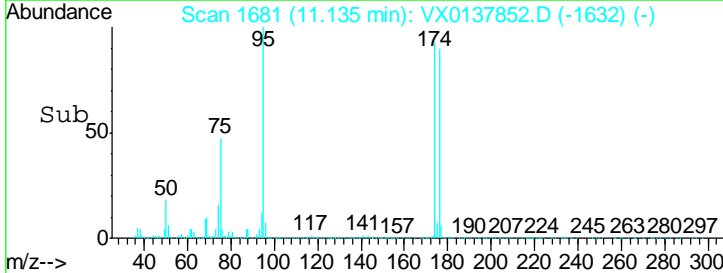
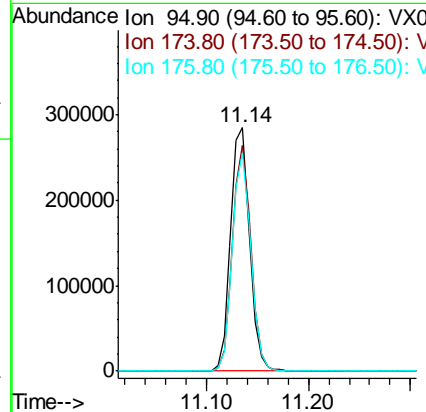
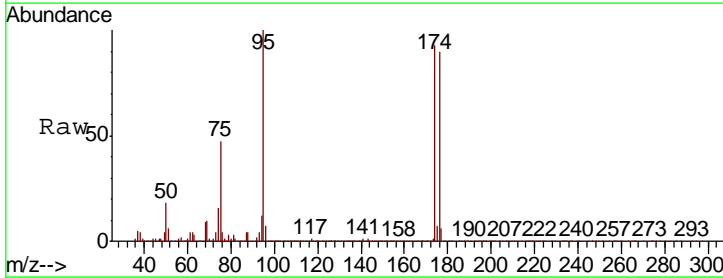
Instrument :  
 MSVOA\_X  
 ClientSampled :

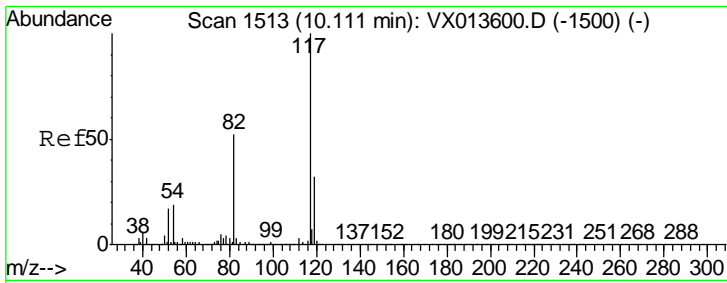
Tgt Ion	Resp	Lower	Upper
98	1110865		
100	65.7	53.1	79.7



#62  
 4-Bromofluorobenzene  
 Concen: 44.742 ug/l  
 RT: 11.14 min Scan# 1681  
 Delta R.T. -0.00 min  
 Lab File: VX0137852.D  
 Acq: 09 Dec 2019 15:23

Tgt Ion	Resp	Lower	Upper
95	365939		
174	89.8	0.0	180.0
176	87.3	0.0	173.6

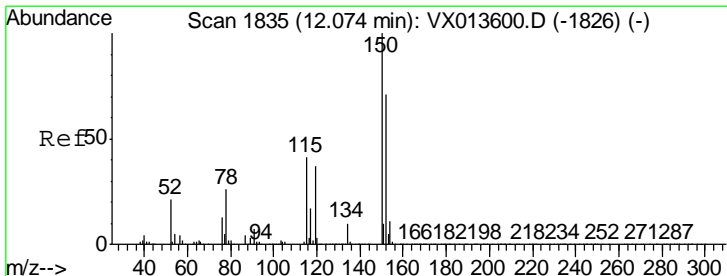
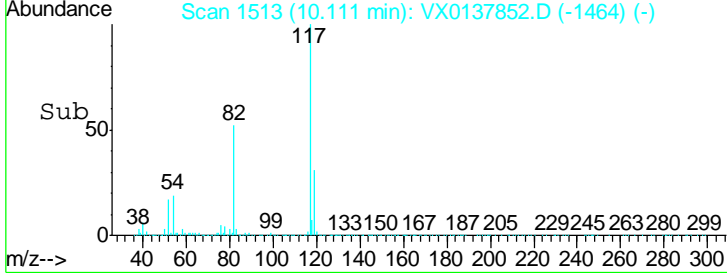
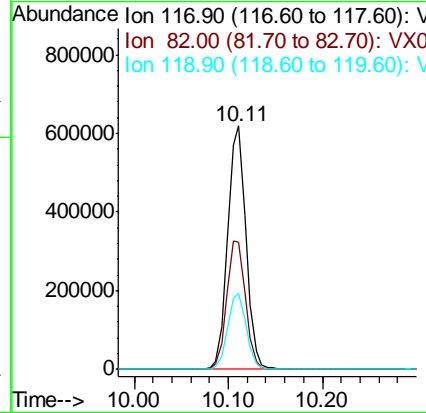
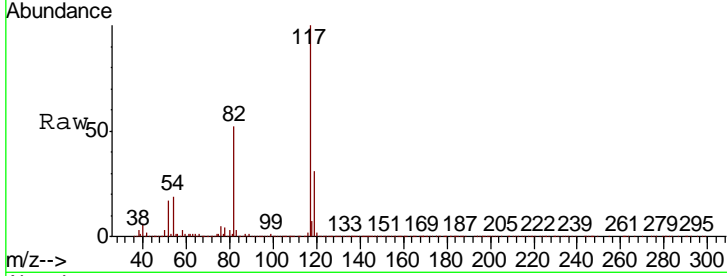




#63  
 Chlorobenzene-d5  
 Concen: 50.000 ug/l  
 RT: 10.11 min Scan# 1513  
 Delta R.T. -0.00 min  
 Lab File: VX0137852.D  
 Acq: 09 Dec 2019 15:23

Instrument : MSVOA\_X  
 ClientSampled :

Tgt Ion	Resp	Lower	Upper
117	831164		
82	52.4	41.8	62.8
119	31.4	25.8	38.8



#72  
 1,4-Dichlorobenzene-d4  
 Concen: 50.000 ug/l  
 RT: 12.07 min Scan# 1835  
 Delta R.T. -0.00 min  
 Lab File: VX0137852.D  
 Acq: 09 Dec 2019 15:23

Tgt Ion	Resp	Lower	Upper
152	359705		
115	54.7	38.4	115.1
150	155.1	0.0	346.8

