

Data Path : Z:\voasrv\HPCHEM1\MSVOA_X\Data\VX120921\
 Data File : VX025682.D
 Acq On : 10 Dec 2021 00:09
 Operator : JC/MD
 Sample : M5004-09 20X
 Misc : 6.07g/5mL/100uL/5.0mL/MSVOA_X/MEOH
 ALS Vial : 32 Sample Multiplier: 1

Instrument :
 MSVOA_X
 ClientSampleId :
 BGKW8

Integration Parameters: LSCINT.P

Integrator: RTE
 Smoothing : OFF Filtering: 5
 Sampling : 1 Min Area: 0 % of largest Peak
 Start Thrs: 0.2 Max Peaks: 100
 Stop Thrs : 0 Peak Location: TOP

If leading or trailing edge < 100 prefer < Baseline drop else tangent >
 Peak separation: 5

Method : Z:\voasrv\HPCHEM1\MSVOA_X\Method\SFAMXLM112221WMA.M
 Title : VOC Analysis

Signal : TIC: VX025682.D\data.ms

peak #	R.T. min	first scan	max scan	last scan	PK TY	peak height	corr. area	corr. % max.	% of total
1	1.368	43	46	53	rVB	58000	55515	15.66%	1.922%
2	1.660	90	94	100	rBV	42925	53175	15.00%	1.841%
3	2.306	194	200	210	rBV	82921	132892	37.49%	4.601%
4	2.617	249	251	255	rBV	294	404	0.11%	0.014%
5	2.788	277	279	283	rBV3	804	881	0.25%	0.030%
6	2.873	291	293	294	rBV	242	229	0.06%	0.008%
7	2.947	298	305	316	rVV2	7353	17984	5.07%	0.623%
8	3.050	320	322	324	rBV	444	281	0.08%	0.010%
9	3.093	324	329	331	rVB2	315	408	0.12%	0.014%
10	3.221	348	350	352	rVB	241	225	0.06%	0.008%
11	3.940	464	468	471	rBV2	367	603	0.17%	0.021%
12	4.099	491	494	495	rBV	388	315	0.09%	0.011%
13	4.221	512	514	516	rBV	358	354	0.10%	0.012%
14	4.458	544	553	566	rBV	25139	70659	19.94%	2.446%
15	4.873	619	621	624	rBV2	280	345	0.10%	0.012%
16	5.062	639	652	666	rBV2	48928	144431	40.75%	5.000%
17	5.452	714	716	721	rVB2	219	259	0.07%	0.009%
18	5.592	738	739	743	rBV2	272	368	0.10%	0.013%
19	5.794	767	772	773	rBV2	177	286	0.08%	0.010%
20	5.977	790	802	815	rBV2	118792	354440	100.00%	12.270%
21	6.214	839	841	843	rBV	313	337	0.10%	0.012%
22	6.312	851	857	859	rBV2	342	444	0.13%	0.015%
23	6.434	875	877	881	rVB2	259	290	0.08%	0.010%
24	6.635	907	910	913	rBV	251	326	0.09%	0.011%
25	6.690	916	919	923	rBV2	223	413	0.12%	0.014%
26	6.763	923	931	943	rBV	111262	265254	74.84%	9.183%
27	7.110	983	988	995	rVB2	2569	4945	1.40%	0.171%
28	7.312	1013	1021	1035	rVB	71345	154782	43.67%	5.358%
29	7.818	1101	1104	1106	rBV	313	294	0.08%	0.010%
30	7.933	1119	1123	1125	rBV2	271	333	0.09%	0.012%
31	8.037	1136	1140	1143	rVB2	230	343	0.10%	0.012%
32	8.074	1143	1146	1152	rVB2	302	518	0.15%	0.018%
33	8.324	1181	1187	1199	rVB	48669	82487	23.27%	2.856%
34	8.537	1218	1222	1224	rBV	188	298	0.08%	0.010%
35	8.574	1225	1228	1229	rVB	336	302	0.09%	0.010%
36	8.586	1229	1230	1234	rBV	211	310	0.09%	0.011%

Data Path : Z:\voasrv\HPCHEM1\MSVOA_X\Data\VX120921\
 Data File : VX025682.D
 Acq On : 10 Dec 2021 00:09
 Operator : JC/MD
 Sample : M5004-09 20X
 Misc : 6.07g/5mL/100uL/5.0mL/MSVOA_X/MEOH
 ALS Vial : 32 Sample Multiplier: 1

Instrument :
 MSVOA_X
 ClientSampleId :
 BGKW8

Integration Parameters: LSCINT.P

Integrator: RTE
 Smoothing : OFF
 Sampling : 1
 Start Thrs: 0.2
 Stop Thrs : 0

Filtering: 5
 Min Area: 0 % of largest Peak
 Max Peaks: 100
 Peak Location: TOP

If leading or trailing edge < 100 prefer < Baseline drop else tangent >
 Peak separation: 5

Method : Z:\voasrv\HPCHEM1\MSVOA_X\Method\SFAMXLM112221WMA.M
 Title : VOC Analysis

37	8.653	1234	1241	1248	rVV	184408	294456	83.08%	10.194%
38	8.720	1249	1252	1258	rVV3	2379	3993	1.13%	0.138%
39	8.952	1284	1290	1298	rVV	35003	50685	14.30%	1.755%
40	9.104	1312	1315	1316	rBV2	348	287	0.08%	0.010%
41	9.275	1339	1343	1346	rBV2	1746	2175	0.61%	0.075%
42	9.384	1356	1361	1371	rBV	105342	153135	43.20%	5.301%
43	9.720	1413	1416	1418	rVB2	444	500	0.14%	0.017%
44	9.958	1454	1455	1458	rBV2	332	323	0.09%	0.011%
45	10.055	1465	1471	1484	rVV	242678	320472	90.42%	11.095%
46	10.299	1510	1511	1513	rBV2	305	256	0.07%	0.009%
47	10.384	1524	1525	1527	rVB2	343	229	0.06%	0.008%
48	10.415	1527	1530	1532	rBV2	222	250	0.07%	0.009%
49	10.622	1561	1564	1565	rBV	312	301	0.08%	0.010%
50	10.762	1583	1587	1592	rBV2	205	375	0.11%	0.013%
51	10.823	1595	1597	1599	rVV	338	236	0.07%	0.008%
52	11.122	1642	1646	1649	rBV2	1458	1919	0.54%	0.066%
53	11.195	1653	1658	1668	rVV	128425	161631	45.60%	5.596%
54	11.274	1668	1671	1674	rVV2	389	481	0.14%	0.017%
55	11.360	1683	1685	1688	rBV	291	276	0.08%	0.010%
56	11.390	1688	1690	1692	rVB	259	244	0.07%	0.008%
57	11.439	1694	1698	1701	rBV2	185	287	0.08%	0.010%
58	11.640	1728	1731	1735	rBV2	236	287	0.08%	0.010%
59	11.750	1745	1749	1755	rVB3	887	1356	0.38%	0.047%
60	11.841	1762	1764	1769	rVB	423	356	0.10%	0.012%
61	11.927	1777	1778	1782	rVB2	688	681	0.19%	0.024%
62	11.957	1782	1783	1788	rVB2	212	286	0.08%	0.010%
63	12.024	1789	1794	1802	rVV	241004	292507	82.53%	10.126%
64	12.152	1812	1815	1819	rVV2	945	1155	0.33%	0.040%
65	12.219	1823	1826	1830	rBV2	272	361	0.10%	0.012%
66	12.323	1838	1843	1853	rVB	192320	241297	68.08%	8.354%
67	12.420	1857	1859	1862	rVB2	378	370	0.10%	0.013%
68	12.506	1870	1873	1875	rBV2	194	248	0.07%	0.009%
69	12.622	1890	1892	1895	rBV	238	286	0.08%	0.010%
70	12.731	1908	1910	1912	rBV2	274	289	0.08%	0.010%
71	12.975	1945	1950	1951	rBV2	229	359	0.10%	0.012%
72	13.036	1957	1960	1961	rBV2	290	298	0.08%	0.010%
73	13.183	1982	1984	1986	rVB	315	228	0.06%	0.008%
74	13.207	1986	1988	1991	rBV2	378	438	0.12%	0.015%
75	13.317	2002	2006	2010	rVV	217	326	0.09%	0.011%
76	13.621	2052	2056	2058	rVV	398	275	0.08%	0.010%

Data Path : Z:\voasrv\HPCHEM1\MSVOA_X\Data\VX120921\
 Data File : VX025682.D
 Acq On : 10 Dec 2021 00:09
 Operator : JC/MD
 Sample : M5004-09 20X
 Misc : 6.07g/5mL/100uL/5.0mL/MSVOA_X/MEOH
 ALS Vial : 32 Sample Multiplier: 1

Instrument :
 MSVOA_X
 ClientSampleId :
 BGKW8

Integration Parameters: LSCINT.P

Integrator: RTE
 Smoothing : OFF
 Sampling : 1
 Start Thrs : 0.2
 Stop Thrs : 0

Filtering: 5
 Min Area: 0 % of largest Peak
 Max Peaks: 100
 Peak Location: TOP

If leading or trailing edge < 100 prefer < Baseline drop else tangent >
 Peak separation: 5

Method : Z:\voasrv\HPCHEM1\MSVOA_X\Method\SFAMXML112221WMA.M
 Title : VOC Analysis

77	13.676	2061	2065	2066	rVB2	264	310	0.09%	0.011%
78	13.786	2079	2083	2085	rBV3	296	501	0.14%	0.017%
79	14.134	2136	2140	2143	rVB2	532	701	0.20%	0.024%
80	14.390	2180	2182	2186	rBV2	231	443	0.12%	0.015%
81	14.512	2198	2202	2203	rBV	246	285	0.08%	0.010%
82	14.615	2217	2219	2221	rBV	321	392	0.11%	0.014%
83	14.719	2234	2236	2239	rBV2	301	297	0.08%	0.010%
84	14.762	2239	2243	2246	rBV3	257	448	0.13%	0.016%
85	14.871	2259	2261	2263	rBV	255	247	0.07%	0.009%
86	14.993	2278	2281	2283	rBV2	234	291	0.08%	0.010%
87	15.030	2285	2287	2290	rVB	605	528	0.15%	0.018%
88	15.060	2290	2292	2294	rBV3	369	407	0.11%	0.014%
89	15.127	2300	2303	2304	rBV2	331	350	0.10%	0.012%
90	15.249	2321	2323	2327	rBV3	210	255	0.07%	0.009%
91	15.347	2338	2339	2341	rBV	337	284	0.08%	0.010%
92	15.414	2346	2350	2353	rVV3	353	390	0.11%	0.014%
93	15.682	2393	2394	2401	rBV2	395	576	0.16%	0.020%
94	15.975	2440	2442	2444	rBV2	211	244	0.07%	0.008%
95	16.152	2469	2471	2472	rBV	314	242	0.07%	0.008%
96	16.194	2476	2478	2482	rBV2	373	511	0.14%	0.018%
97	16.292	2492	2494	2498	rBV2	385	375	0.11%	0.013%
98	16.414	2512	2514	2518	rBV2	217	228	0.06%	0.008%
99	16.475	2522	2524	2527	rBV2	248	323	0.09%	0.011%
100	16.609	2543	2546	2547	rBV2	247	290	0.08%	0.010%

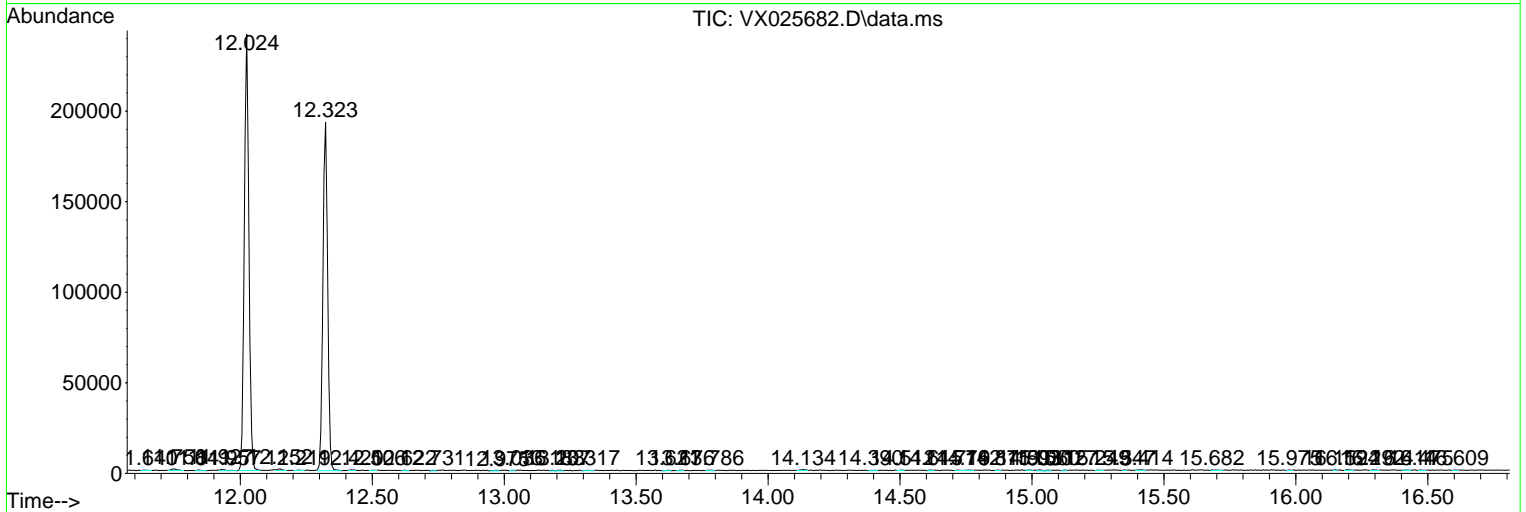
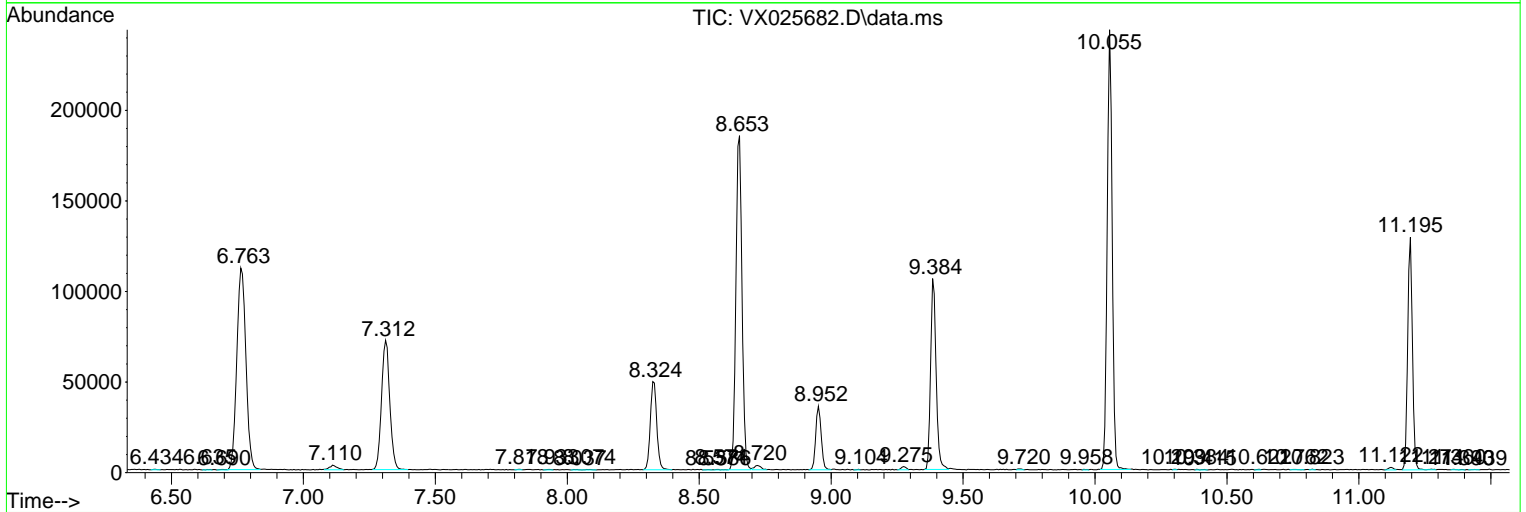
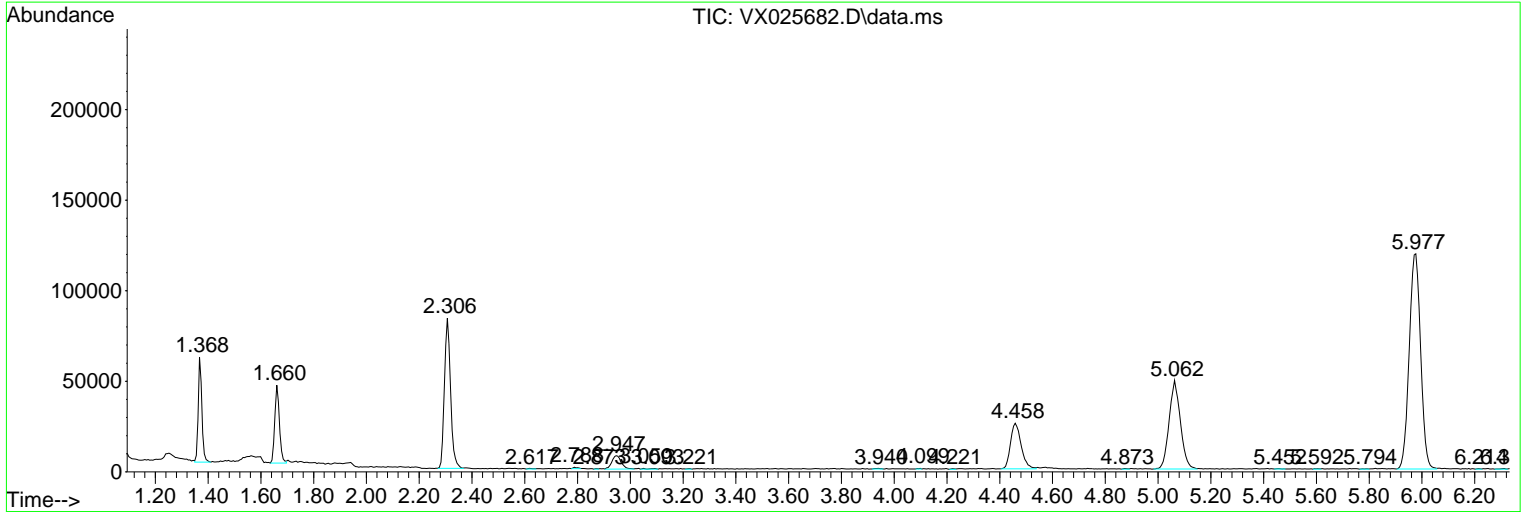
Sum of corrected areas: 2888562

Data Path : Z:\voasrv\HPCHEM1\MSVOA_X\Data\VX120921\
 Data File : VX025682.D
 Acq On : 10 Dec 2021 00:09
 Operator : JC/MD
 Sample : M5004-09 20X
 Misc : 6.07g/5mL/100uL/5.0mL/MSVOA_X/MEOH
 ALS Vial : 32 Sample Multiplier: 1

Instrument :
 MSVOA_X
 ClientSampleId :
 BGKW8

Quant Method : Z:\voasrv\HPCHEM1\MSVOA_X\Method\SFAMXLM112221WMA.M
 Quant Title : VOC Analysis

TIC Library : C:\Database\NIST20.L
 TIC Integration Parameters: LSCINT.P



Data Path : Z:\voasrv\HPCHEM1\MSVOA_X\Data\VX120921\
Data File : VX025682.D
Acq On : 10 Dec 2021 00:09
Operator : JC/MD
Sample : M5004-09 20X
Misc : 6.07g/5mL/100uL/5.0mL/MSVOA_X/MEOH
ALS Vial : 32 Sample Multiplier: 1

Instrument :
MSVOA_X
ClientSampleId :
BGKW8

Quant Method : Z:\voasrv\HPCHEM1\MSVOA_X\Method\SFAMXLM112221WMA.M
Quant Title : VOC Analysis

TIC Library : C:\Database\NIST0.L
TIC Integration Parameters: LSCINT.P

No Library Search Compounds Detected

Data Path : Z:\voasrv\HPCHEM1\MSVOA_X\Data\VX120921\
Data File : VX025682.D
Acq On : 10 Dec 2021 00:09
Operator : JC/MD
Sample : M5004-09 20X
Misc : 6.07g/5mL/100uL/5.0mL/MSVOA_X/MEOH
ALS Vial : 32 Sample Multiplier: 1

Instrument :
MSVOA_X
ClientSampleId :
BGKW8

Quant Method : Z:\voasrv\HPCHEM1\MSVOA_X\Method\SFAMXLM112221WMA.M
Quant Title : VOC Analysis

TIC Library : C:\Database\NIST20.L
TIC Integration Parameters: LSCINT.P

TIC Top Hit name	RT	EstConc	Units	Response	--Internal Standard--		
					#	RT	Resp Conc
