

Data Path : Z:\voasrv\HPCHEM1\MSVOA_X\Data\VX120921\
 Data File : VX025684.D
 Acq On : 10 Dec 2021 00:56
 Operator : JC/MD
 Sample : M5004-11 20X
 Misc : 6.28g/5mL/100uL/5.0mL/MSVOA_X/MEOH
 ALS Vial : 34 Sample Multiplier: 1

Instrument :
 MSVOA_X
 ClientSampleId :
 BGKX0

Integration Parameters: LSCINT.P

Integrator: RTE
 Smoothing : OFF Filtering: 5
 Sampling : 1 Min Area: 0 % of largest Peak
 Start Thrs: 0.2 Max Peaks: 100
 Stop Thrs : 0 Peak Location: TOP

If leading or trailing edge < 100 prefer < Baseline drop else tangent >
 Peak separation: 5

Method : Z:\voasrv\HPCHEM1\MSVOA_X\Method\SFAMXLM112221WMA.M
 Title : VOC Analysis

Signal : TIC: VX025684.D\data.ms

peak #	R.T. min	first scan	max scan	last scan	PK TY	peak height	corr. area	corr. % max.	% of total
1	1.368	43	46	54	rVB	53362	52992	14.96%	1.805%
2	1.660	90	94	101	rBV	39233	51508	14.54%	1.755%
3	2.306	194	200	210	rVB	81963	134585	37.98%	4.585%
4	2.794	276	280	284	rVB3	806	1214	0.34%	0.041%
5	2.880	292	294	297	rBV	415	423	0.12%	0.014%
6	2.947	297	305	314	rVV2	10058	23380	6.60%	0.797%
7	3.148	337	338	339	rBV	401	201	0.06%	0.007%
8	3.617	411	415	418	rBV2	433	643	0.18%	0.022%
9	3.757	436	438	441	rVB2	228	211	0.06%	0.007%
10	4.135	498	500	503	rVB2	329	270	0.08%	0.009%
11	4.294	524	526	528	rBV	276	312	0.09%	0.011%
12	4.459	545	553	567	rBV	24807	68747	19.40%	2.342%
13	4.733	597	598	600	rBV	359	346	0.10%	0.012%
14	4.904	622	626	627	rBV2	230	229	0.06%	0.008%
15	5.068	641	653	667	rVB	45353	143289	40.44%	4.882%
16	5.208	674	676	679	rBV2	220	275	0.08%	0.009%
17	5.306	688	692	693	rVB2	417	372	0.10%	0.013%
18	5.391	696	706	716	rVV4	3785	11608	3.28%	0.395%
19	5.532	727	729	732	rBV	354	492	0.14%	0.017%
20	5.666	746	751	753	rBV	333	399	0.11%	0.014%
21	5.720	757	760	764	rBV2	220	392	0.11%	0.013%
22	5.800	771	773	779	rBV2	292	453	0.13%	0.015%
23	5.970	790	801	817	rBV2	116771	354339	100.00%	12.072%
24	6.361	862	865	866	rBV	299	282	0.08%	0.010%
25	6.458	879	881	883	rBV	280	244	0.07%	0.008%
26	6.617	905	907	910	rBV2	322	368	0.10%	0.013%
27	6.678	916	917	919	rBV	337	205	0.06%	0.007%
28	6.763	923	931	942	rBV	107784	258181	72.86%	8.796%
29	6.976	962	966	967	rVB2	328	376	0.11%	0.013%
30	6.989	967	968	971	rBV	351	395	0.11%	0.013%
31	7.123	982	990	998	rVB6	5173	12746	3.60%	0.434%
32	7.214	1003	1005	1007	rBV	358	304	0.09%	0.010%
33	7.312	1013	1021	1034	rBV	73118	156814	44.26%	5.343%
34	7.537	1055	1058	1059	rBV2	226	220	0.06%	0.007%
35	7.793	1097	1100	1101	rBV2	246	262	0.07%	0.009%
36	8.074	1144	1146	1149	rBV2	258	383	0.11%	0.013%

Data Path : Z:\voasrv\HPCHEM1\MSVOA_X\Data\VX120921\
 Data File : VX025684.D
 Acq On : 10 Dec 2021 00:56
 Operator : JC/MD
 Sample : M5004-11 20X
 Misc : 6.28g/5mL/100uL/5.0mL/MSVOA_X/MEOH
 ALS Vial : 34 Sample Multiplier: 1

Instrument :
 MSVOA_X
 ClientSampleId :
 BGKX0

Integration Parameters: LSCINT.P

Integrator: RTE
 Smoothing : OFF
 Sampling : 1
 Start Thrs: 0.2
 Stop Thrs : 0

Filtering: 5
 Min Area: 0 % of largest Peak
 Max Peaks: 100
 Peak Location: TOP

If leading or trailing edge < 100 prefer < Baseline drop else tangent >
 Peak separation: 5

Method : Z:\voasrv\HPCHEM1\MSVOA_X\Method\SFAMXLM112221WMA.M
 Title : VOC Analysis

37	8.165	1159	1161	1162	rBV	222	236	0.07%	0.008%
38	8.324	1181	1187	1197	rBV	49364	81780	23.08%	2.786%
39	8.494	1213	1215	1219	rVB	304	321	0.09%	0.011%
40	8.531	1219	1221	1223	rBV	239	268	0.08%	0.009%
41	8.653	1234	1241	1248	rBV	185641	294150	83.01%	10.021%
42	8.720	1248	1252	1260	rVB3	2720	4948	1.40%	0.169%
43	8.885	1278	1279	1282	rVB	319	269	0.08%	0.009%
44	8.952	1285	1290	1301	rVB	35424	51456	14.52%	1.753%
45	9.177	1326	1327	1331	rVB2	457	391	0.11%	0.013%
46	9.275	1338	1343	1351	rVV	25661	37778	10.66%	1.287%
47	9.384	1356	1361	1371	rBV	105479	155202	43.80%	5.288%
48	9.604	1394	1397	1398	rBV	322	256	0.07%	0.009%
49	9.622	1398	1400	1403	rVV2	287	409	0.12%	0.014%
50	9.647	1403	1404	1406	rVV	315	208	0.06%	0.007%
51	9.720	1409	1416	1421	rBV4	554	1465	0.41%	0.050%
52	9.775	1421	1425	1427	rBV2	203	248	0.07%	0.008%
53	9.897	1443	1445	1447	rVV2	322	234	0.07%	0.008%
54	9.945	1449	1453	1455	rBV	331	431	0.12%	0.015%
55	10.055	1465	1471	1480	rBV	236651	313486	88.47%	10.680%
56	10.268	1505	1506	1508	rVB	305	219	0.06%	0.007%
57	10.311	1510	1513	1514	rVV2	468	475	0.13%	0.016%
58	10.360	1517	1521	1522	rVB2	290	252	0.07%	0.009%
59	10.415	1527	1530	1532	rVB	253	281	0.08%	0.010%
60	10.567	1553	1555	1557	rBV	231	215	0.06%	0.007%
61	10.653	1568	1569	1572	rVB2	299	268	0.08%	0.009%
62	10.677	1572	1573	1576	rBV	402	359	0.10%	0.012%
63	10.774	1587	1589	1590	rVB	383	239	0.07%	0.008%
64	10.963	1618	1620	1622	rBV2	266	238	0.07%	0.008%
65	11.043	1629	1633	1635	rBV	310	329	0.09%	0.011%
66	11.122	1643	1646	1651	rVB3	1218	1482	0.42%	0.050%
67	11.195	1652	1658	1664	rBV	129496	164020	46.29%	5.588%
68	11.396	1689	1691	1693	rVB2	323	303	0.09%	0.010%
69	11.427	1693	1696	1697	rBV	282	235	0.07%	0.008%
70	11.677	1735	1737	1739	rVB	312	237	0.07%	0.008%
71	11.744	1745	1748	1753	rVV4	1096	1395	0.39%	0.048%
72	11.878	1767	1770	1771	rBV2	275	312	0.09%	0.011%
73	12.024	1789	1794	1802	rVV	239294	290159	81.89%	9.886%
74	12.128	1806	1811	1812	rBV3	636	723	0.20%	0.025%
75	12.152	1812	1815	1817	rVV2	947	1064	0.30%	0.036%
76	12.195	1820	1822	1823	rBV	337	282	0.08%	0.010%

Data Path : Z:\voasrv\HPCHEM1\MSVOA_X\Data\VX120921\
 Data File : VX025684.D
 Acq On : 10 Dec 2021 00:56
 Operator : JC/MD
 Sample : M5004-11 20X
 Misc : 6.28g/5mL/100uL/5.0mL/MSVOA_X/MEOH
 ALS Vial : 34 Sample Multiplier: 1

Instrument :
 MSVOA_X
 ClientSampleId :
 BGKX0

Integration Parameters: LSCINT.P

Integrator: RTE
 Smoothing : OFF Filtering: 5
 Sampling : 1 Min Area: 0 % of largest Peak
 Start Thrs: 0.2 Max Peaks: 100
 Stop Thrs : 0 Peak Location: TOP

If leading or trailing edge < 100 prefer < Baseline drop else tangent >
 Peak separation: 5

Method : Z:\voasrv\HPCHEM1\MSVOA_X\Method\SFAMXLM112221WMA.M
 Title : VOC Analysis

77	12.262	1831	1833	1834	rBV	342	253	0.07%	0.009%
78	12.323	1837	1843	1850	rVV	194221	243337	68.67%	8.290%
79	12.603	1886	1889	1891	rBV	272	399	0.11%	0.014%
80	12.640	1894	1895	1899	rVV	274	307	0.09%	0.010%
81	12.719	1906	1908	1910	rBV	502	298	0.08%	0.010%
82	12.762	1912	1915	1920	rVB2	313	492	0.14%	0.017%
83	13.073	1963	1966	1967	rBV	284	303	0.09%	0.010%
84	13.146	1975	1978	1979	rBV	471	464	0.13%	0.016%
85	13.420	2021	2023	2025	rVV	410	252	0.07%	0.009%
86	13.573	2046	2048	2051	rVB	526	521	0.15%	0.018%
87	13.615	2051	2055	2058	rBV	352	632	0.18%	0.022%
88	13.646	2058	2060	2063	rBV	335	386	0.11%	0.013%
89	13.743	2074	2076	2079	rVB2	268	219	0.06%	0.007%
90	14.036	2122	2124	2127	rBV	229	251	0.07%	0.009%
91	14.079	2130	2131	2134	rVB	281	212	0.06%	0.007%
92	14.170	2145	2146	2148	rBV	264	213	0.06%	0.007%
93	14.371	2178	2179	2183	rVB	255	247	0.07%	0.008%
94	14.926	2268	2270	2272	rBV2	433	328	0.09%	0.011%
95	15.079	2293	2295	2300	rBV2	327	553	0.16%	0.019%
96	15.322	2333	2335	2337	rVB2	468	438	0.12%	0.015%
97	15.347	2337	2339	2340	rBV	314	250	0.07%	0.009%
98	15.731	2400	2402	2405	rVB2	383	300	0.08%	0.010%
99	15.914	2430	2432	2434	rBV2	237	245	0.07%	0.008%
100	16.133	2466	2468	2470	rVB	315	214	0.06%	0.007%

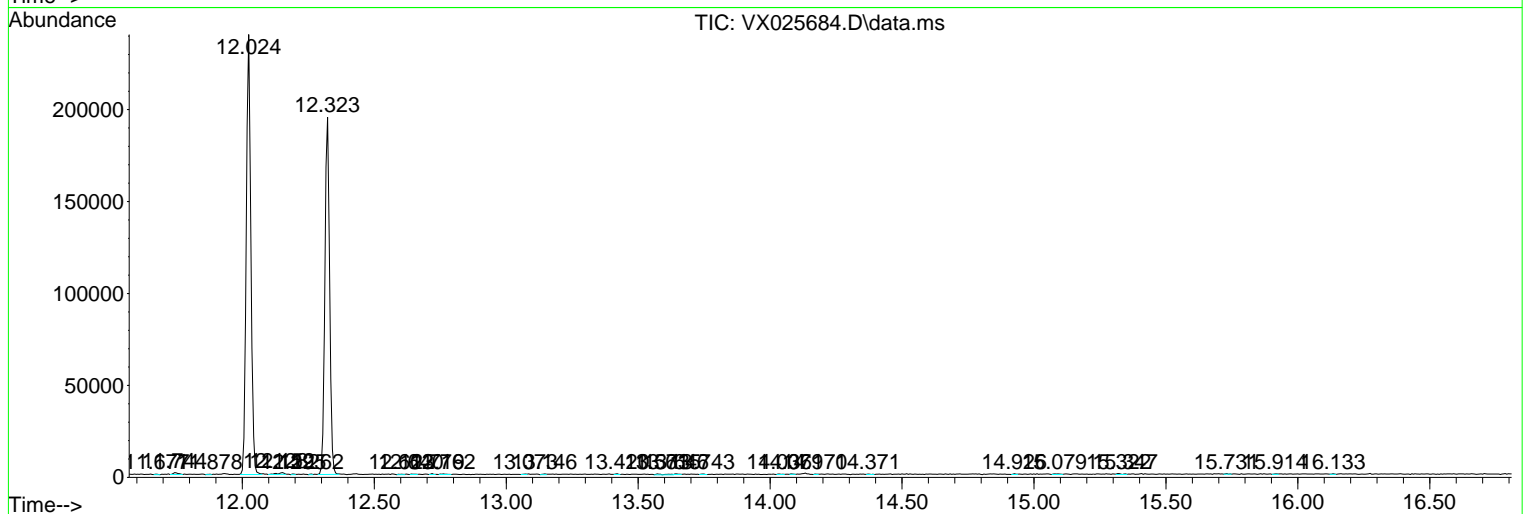
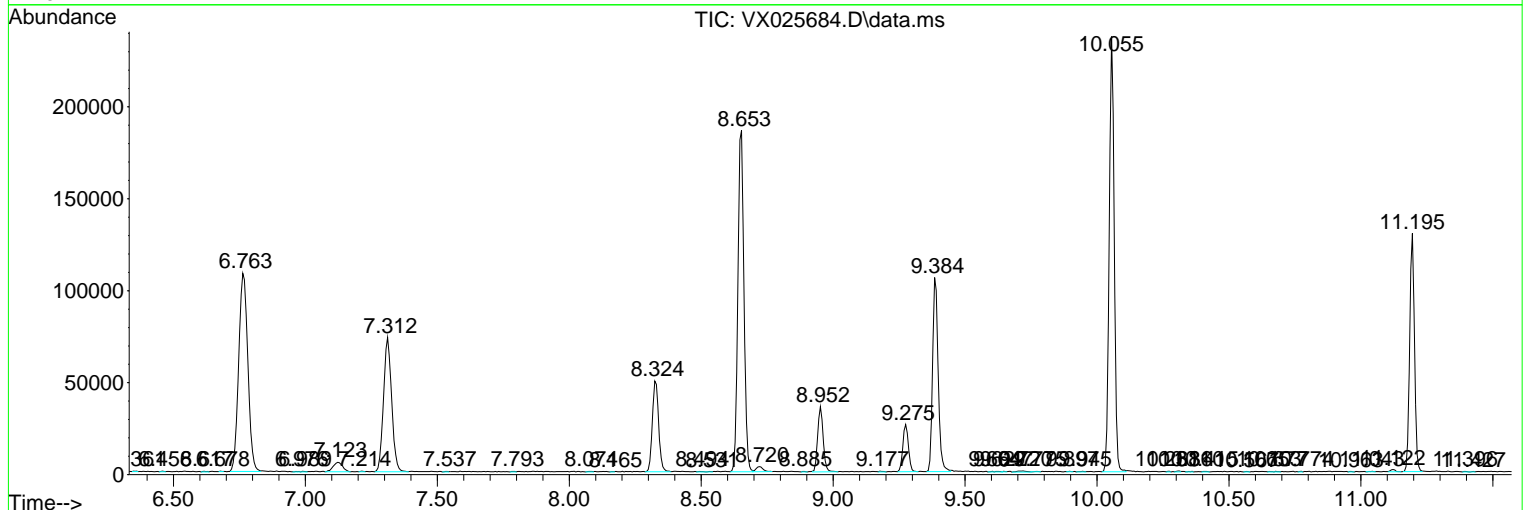
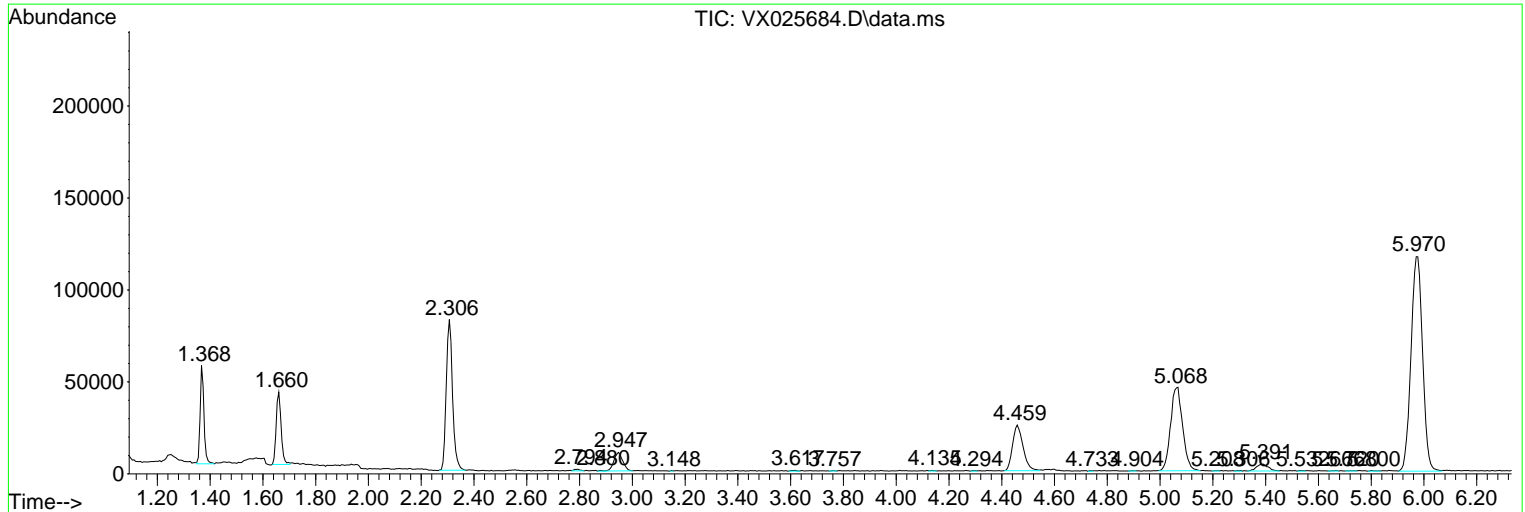
Sum of corrected areas: 2935197

Data Path : Z:\voasrv\HPCHEM1\MSVOA_X\Data\VX120921\
 Data File : VX025684.D
 Acq On : 10 Dec 2021 00:56
 Operator : JC/MD
 Sample : M5004-11 20X
 Misc : 6.28g/5mL/100uL/5.0mL/MSVOA_X/MEOH
 ALS Vial : 34 Sample Multiplier: 1

Instrument :
 MSVOA_X
ClientSampleId :
 BGKX0

Quant Method : Z:\voasrv\HPCHEM1\MSVOA_X\Method\SFAMXLM112221WMA.M
 Quant Title : VOC Analysis

TIC Library : C:\Database\NIST20.L
 TIC Integration Parameters: LSCINT.P



Data Path : Z:\voasrv\HPCHEM1\MSVOA_X\Data\VX120921\
Data File : VX025684.D
Acq On : 10 Dec 2021 00:56
Operator : JC/MD
Sample : M5004-11 20X
Misc : 6.28g/5mL/100uL/5.0mL/MSVOA_X/MEOH
ALS Vial : 34 Sample Multiplier: 1

Instrument :
MSVOA_X
ClientSampleId :
BGKX0

Quant Method : Z:\voasrv\HPCHEM1\MSVOA_X\Method\SFAMXLM112221WMA.M
Quant Title : VOC Analysis

TIC Library : C:\Database\NIST0.L
TIC Integration Parameters: LSCINT.P

No Library Search Compounds Detected

Data Path : Z:\voasrv\HPCHEM1\MSVOA_X\Data\VX120921\
Data File : VX025684.D
Acq On : 10 Dec 2021 00:56
Operator : JC/MD
Sample : M5004-11 20X
Misc : 6.28g/5mL/100uL/5.0mL/MSVOA_X/MEOH
ALS Vial : 34 Sample Multiplier: 1

Instrument :
MSVOA_X
ClientSampleId :
BGKX0

Quant Method : Z:\voasrv\HPCHEM1\MSVOA_X\Method\SFAMXLM112221WMA.M
Quant Title : VOC Analysis

TIC Library : C:\Database\NIST0.L
TIC Integration Parameters: LSCINT.P

TIC Top Hit name	RT	EstConc	Units	Response	--Internal Standard--			
					#	RT	Resp	Conc
