

Data Path : Z:\voasrv\HPCHEM1\MSVOA_X\Data\VX120922\
 Data File : VX033351.D
 Acq On : 09 Dec 2022 16:36
 Operator : JC/MD
 Sample : N5966-03
 Misc : 5.0mL/MSVOA_X/WATER
 ALS Vial : 15 Sample Multiplier: 1

Instrument :
 MSVOA_X
 ClientSampleId :
 TB-01-120822

Quant Time: Dec 10 05:57:01 2022
 Quant Method : Z:\voasrv\HPCHEM1\MSVOA_X\Method\82X120722W.M
 Quant Title : SW846 8260
 QLast Update : Wed Dec 07 12:43:54 2022
 Response via : Initial Calibration

Compound	R.T.	QIon	Response	Conc	Units	Dev(Min)

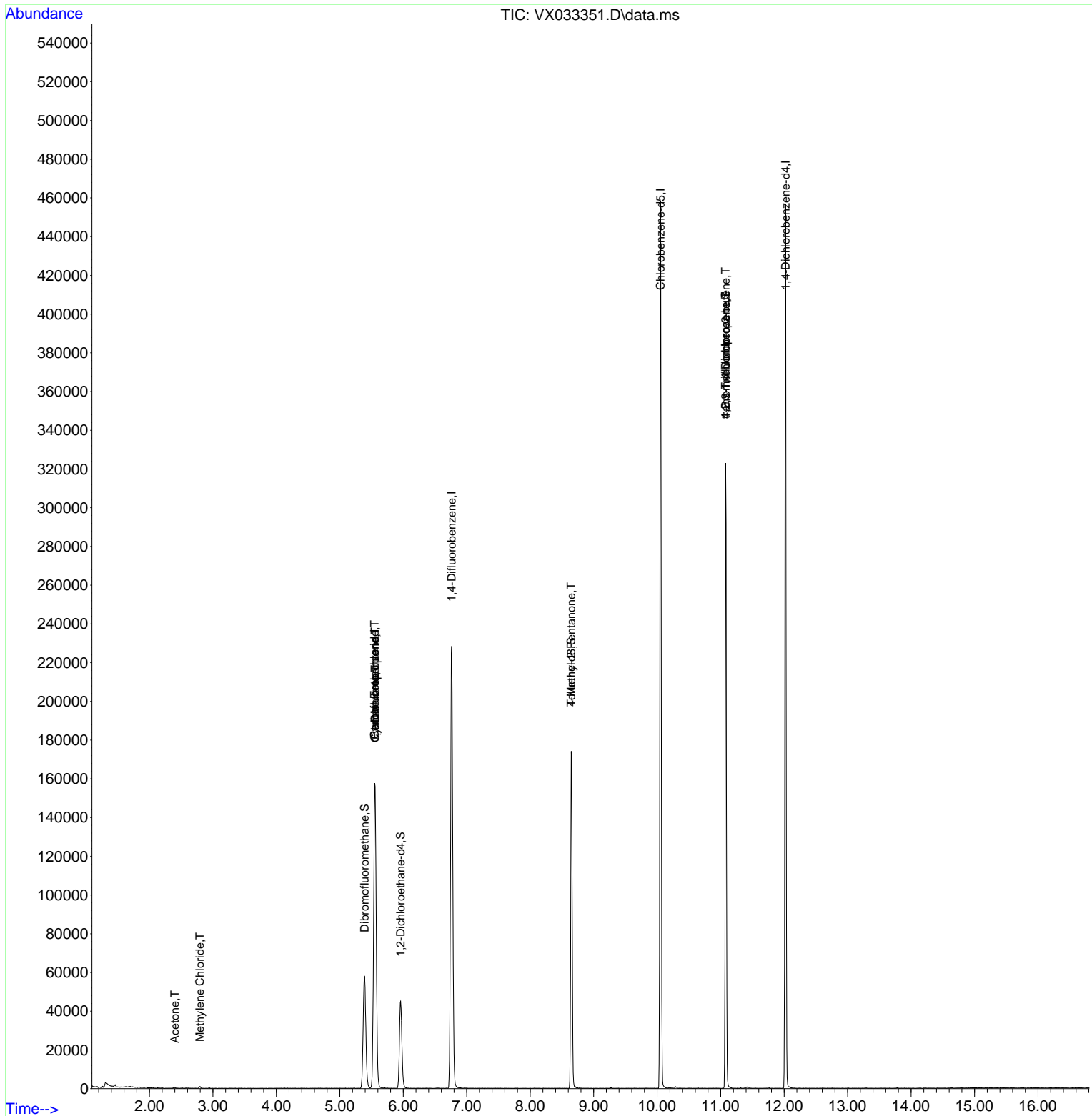
Internal Standards						
1) Pentafluorobenzene	5.550	168	152443	50.000	ug/l	0.00
34) 1,4-Difluorobenzene	6.763	114	243586	50.000	ug/l	0.00
63) Chlorobenzene-d5	10.055	117	214873	50.000	ug/l	0.00
72) 1,4-Dichlorobenzene-d4	12.024	152	97646	50.000	ug/l	0.00
System Monitoring Compounds						
33) 1,2-Dichloroethane-d4	5.958	65	46991	48.049	ug/l	0.00
Spiked Amount	50.000	Range 78 - 117	Recovery	=	96.100%	
35) Dibromofluoromethane	5.391	113	51773	47.255	ug/l	0.00
Spiked Amount	50.000	Range 75 - 124	Recovery	=	94.520%	
50) Toluene-d8	8.647	98	108951	47.537	ug/l	0.00
Spiked Amount	50.000	Range 92 - 112	Recovery	=	95.080%	
62) 4-Bromofluorobenzene	11.079	95	85092	48.556	ug/l	0.00
Spiked Amount	50.000	Range 83 - 123	Recovery	=	97.120%	
Target Compounds						
						Qvalue
16) Acetone	2.398	43	515	0.712	ug/l #	85
20) Methylene Chloride	2.794	84	530	0.328	ug/l #	74
31) Cyclohexane	5.556	56	2813	1.210	ug/l #	1
36) 1,1-Dichloropropene	5.556	75	11808	5.528	ug/l #	50
38) Carbon Tetrachloride	5.550	117	15455	6.458	ug/l #	15
51) 4-Methyl-2-Pentanone	8.647	43	477	0.232	ug/l #	1
76) 1,2,3-Trichloropropane	11.079	75	43842	22.069	ug/l #	37
81) trans-1,4-Dichloro-2-b...	11.079	75	43842	68.648	ug/l #	6

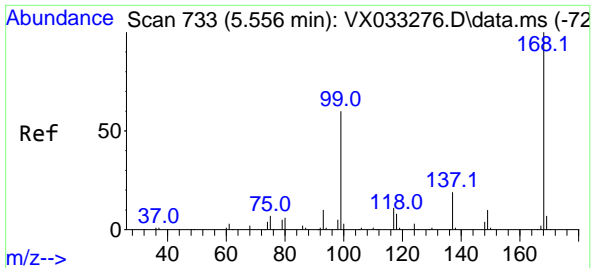
(#) = qualifier out of range (m) = manual integration (+) = signals summed

Data Path : Z:\voasrv\HPCHEM1\MSVOA_X\Data\VX120922\
 Data File : VX033351.D
 Acq On : 09 Dec 2022 16:36
 Operator : JC/MD
 Sample : N5966-03
 Misc : 5.0mL/MSVOA_X/WATER
 ALS Vial : 15 Sample Multiplier: 1

Instrument :
 MSVOA_X
 ClientSampleId :
 TB-01-120822

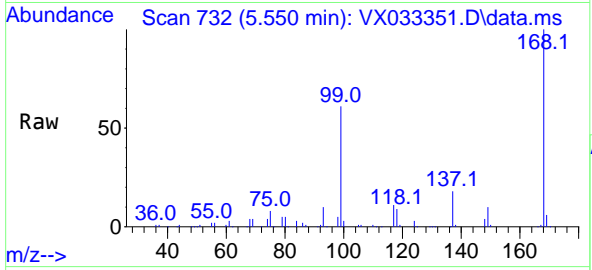
Quant Time: Dec 10 05:57:01 2022
 Quant Method : Z:\voasrv\HPCHEM1\MSVOA_X\Method\82X120722W.M
 Quant Title : SW846 8260
 QLast Update : Wed Dec 07 12:43:54 2022
 Response via : Initial Calibration



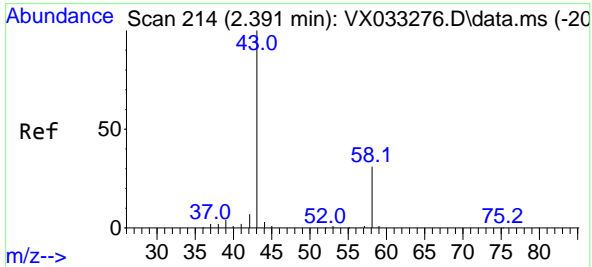
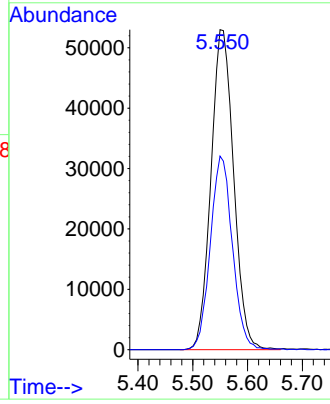
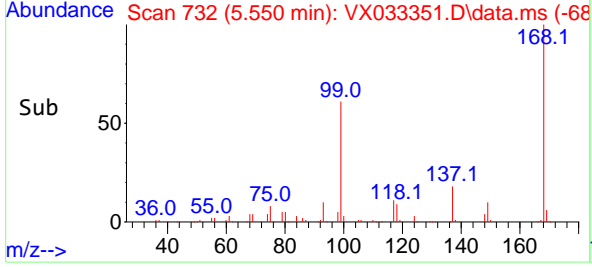


#1
 Pentafluorobenzene
 Concen: 50.000 ug/l
 RT: 5.550 min Scan# 71
 Delta R.T. -0.006 min
 Lab File: VX033351.D
 Acq: 09 Dec 2022 16:36

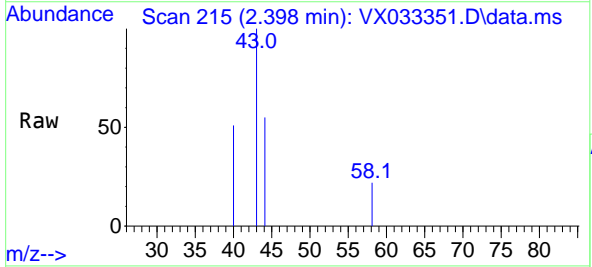
Instrument : MSVOA_X
 ClientSampleId : TB-01-120822



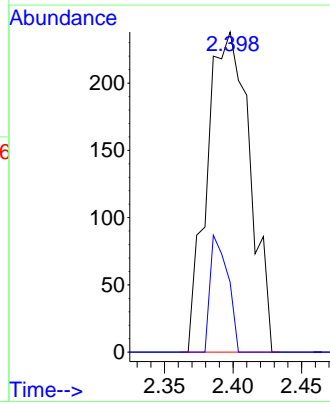
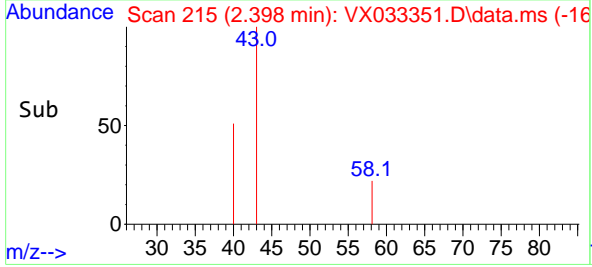
Tgt Ion:168 Resp: 152443
 Ion Ratio Lower Upper
 168 100
 99 60.5 46.1 69.1

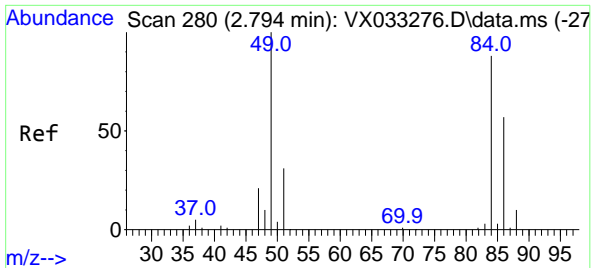


#16
 Acetone
 Concen: 0.712 ug/l
 RT: 2.398 min Scan# 215
 Delta R.T. 0.006 min
 Lab File: VX033351.D
 Acq: 09 Dec 2022 16:36



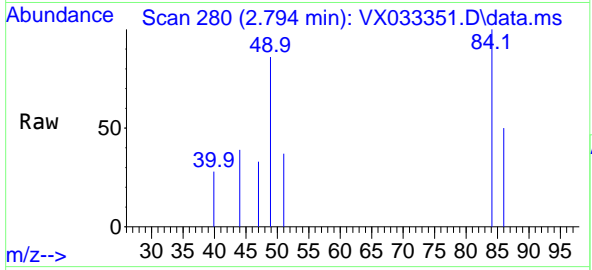
Tgt Ion: 43 Resp: 515
 Ion Ratio Lower Upper
 43 100
 58 21.8 23.8 35.8#





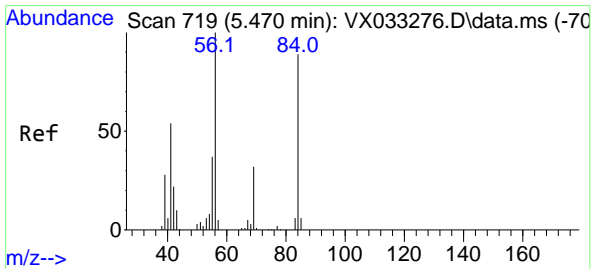
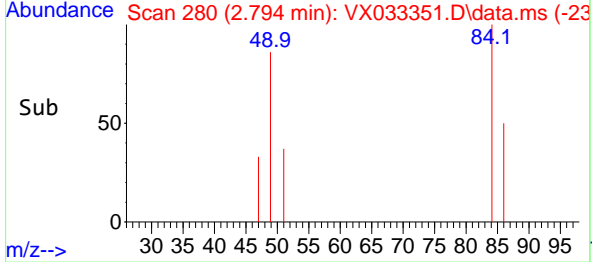
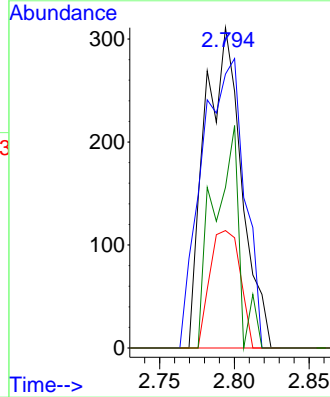
#20
 Methylene Chloride
 Concen: 0.328 ug/l
 RT: 2.794 min Scan# 21
 Delta R.T. 0.000 min
 Lab File: VX033351.D
 Acq: 09 Dec 2022 16:36

Instrument : MSVOA_X
 ClientSampleId : TB-01-120822

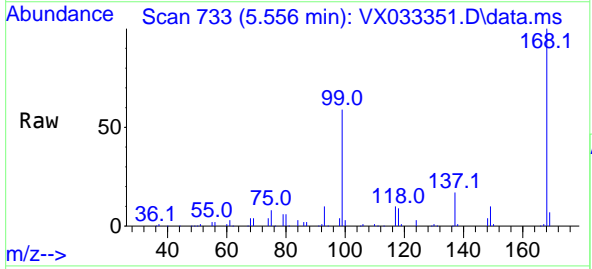


Tgt Ion: 84 Resp: 530

Ion	Ratio	Lower	Upper
84	100		
49	85.5	101.0	151.6#
51	36.7	31.1	46.7
86	50.2	52.3	78.5#

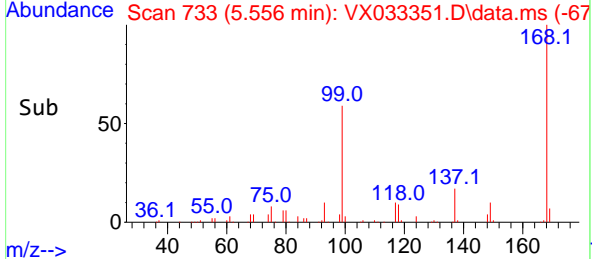
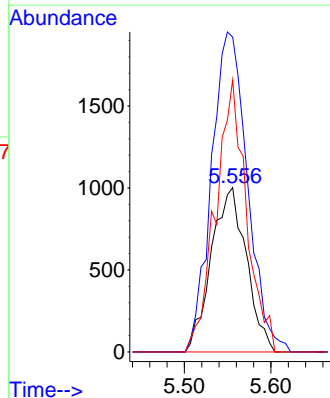


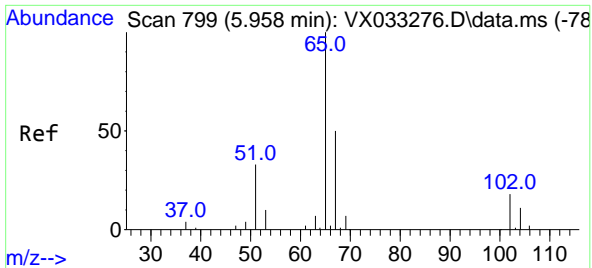
#31
 Cyclohexane
 Concen: 1.210 ug/l
 RT: 5.556 min Scan# 733
 Delta R.T. 0.086 min
 Lab File: VX033351.D
 Acq: 09 Dec 2022 16:36



Tgt Ion: 56 Resp: 2813

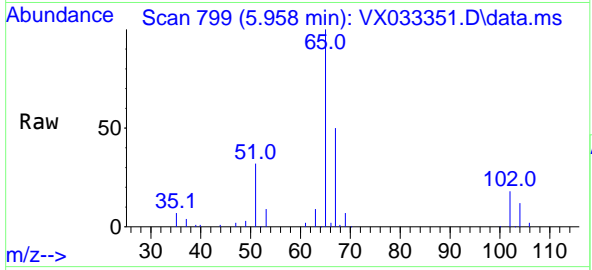
Ion	Ratio	Lower	Upper
56	100		
69	191.7	24.1	36.1#
84	165.6	66.9	100.3#



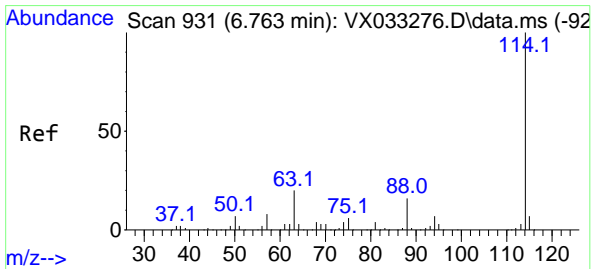
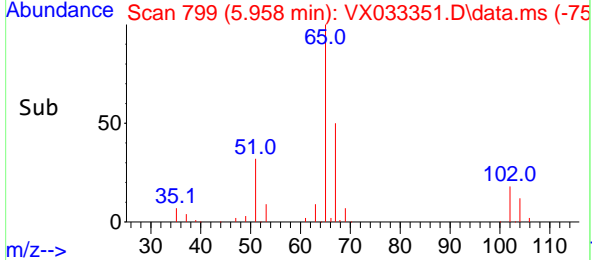
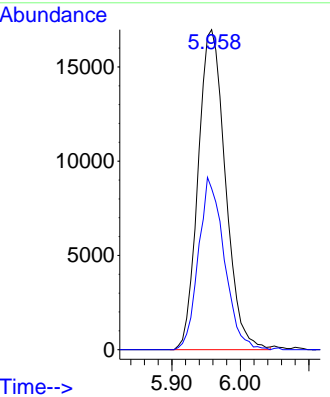


#33
 1,2-Dichloroethane-d4
 Concen: 48.049 ug/l
 RT: 5.958 min Scan# 799
 Delta R.T. 0.000 min
 Lab File: VX033351.D
 Acq: 09 Dec 2022 16:36

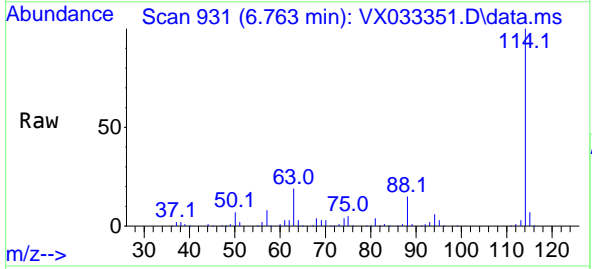
Instrument : MSVOA_X
 ClientSampleId : TB-01-120822



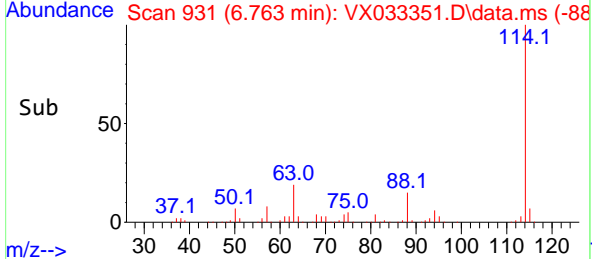
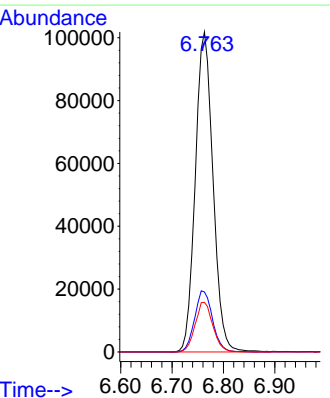
Tgt Ion: 65 Resp: 46991
 Ion Ratio Lower Upper
 65 100
 67 50.9 0.0 101.8

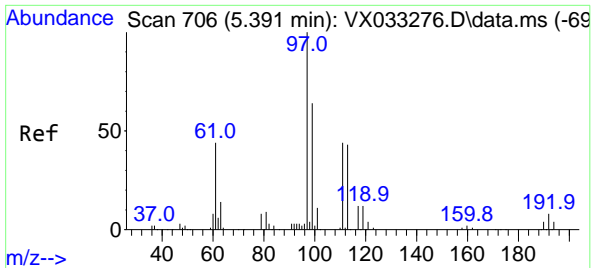


#34
 1,4-Difluorobenzene
 Concen: 50.000 ug/l
 RT: 6.763 min Scan# 931
 Delta R.T. 0.000 min
 Lab File: VX033351.D
 Acq: 09 Dec 2022 16:36



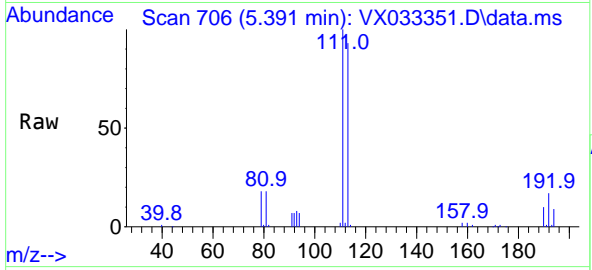
Tgt Ion: 114 Resp: 243586
 Ion Ratio Lower Upper
 114 100
 63 18.8 0.0 41.6
 88 15.5 0.0 33.4





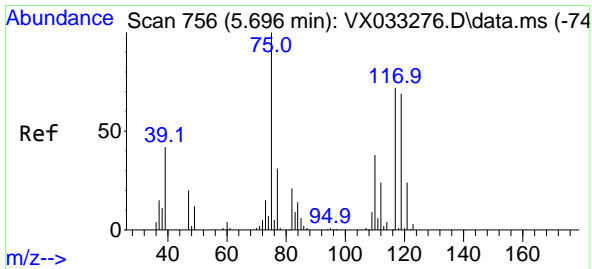
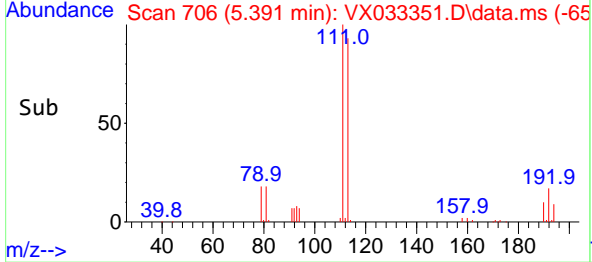
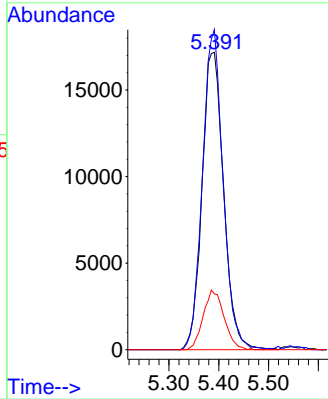
#35
 Dibromofluoromethane
 Concen: 47.255 ug/l
 RT: 5.391 min Scan# 706
 Delta R.T. 0.000 min
 Lab File: VX033351.D
 Acq: 09 Dec 2022 16:36

Instrument : MSVOA_X
 Client Sample Id : TB-01-120822



Tgt Ion: 113 Resp: 51773

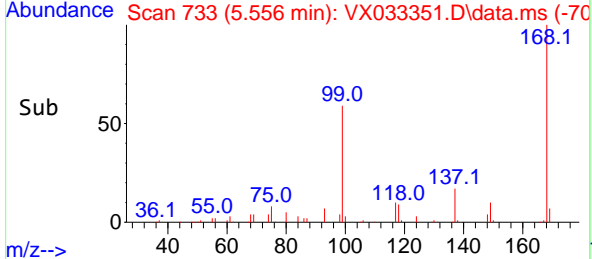
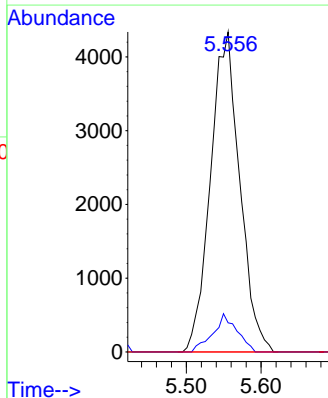
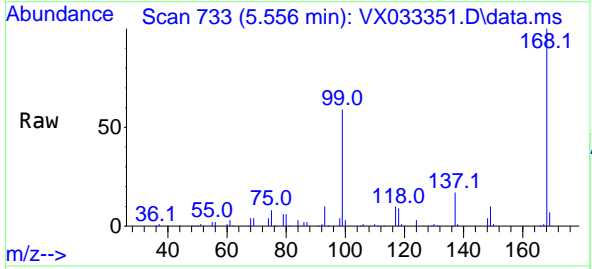
Ion	Ratio	Lower	Upper
113	100		
111	102.6	82.4	123.6
192	19.4	15.4	23.2

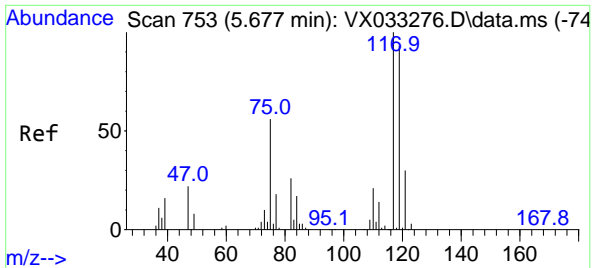


#36
 1,1-Dichloropropene
 Concen: 5.528 ug/l
 RT: 5.556 min Scan# 733
 Delta R.T. -0.140 min
 Lab File: VX033351.D
 Acq: 09 Dec 2022 16:36

Tgt Ion: 75 Resp: 11808

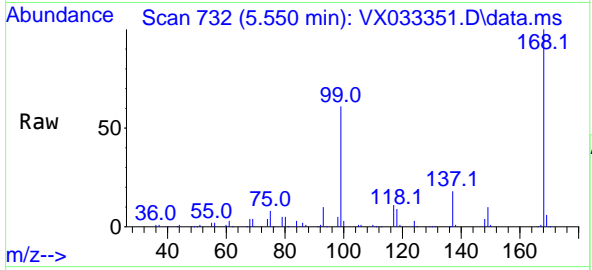
Ion	Ratio	Lower	Upper
75	100		
110	9.8	18.4	55.2#
77	0.0	24.5	36.7#



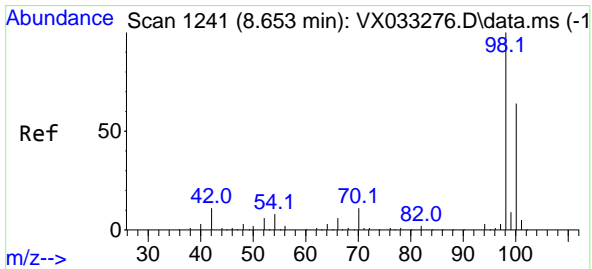
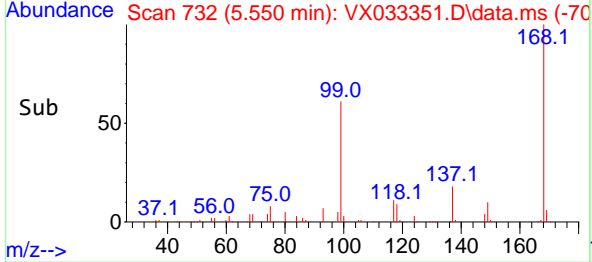
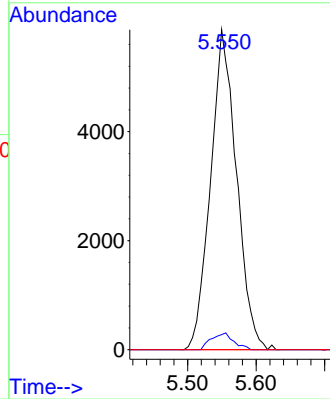


#38
 Carbon Tetrachloride
 Concen: 6.458 ug/l
 RT: 5.550 min Scan# 71
 Delta R.T. -0.128 min
 Lab File: VX033351.D
 Acq: 09 Dec 2022 16:36

Instrument : MSVOA_X
 ClientSampleId : TB-01-120822

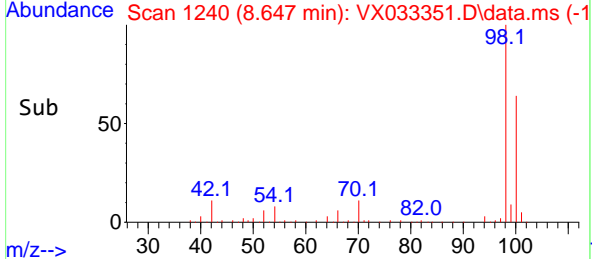
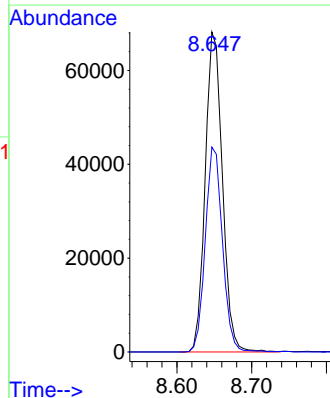
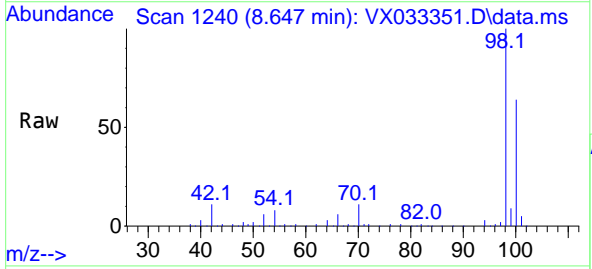


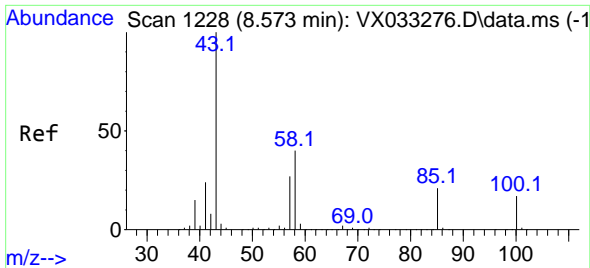
Tgt Ion:117 Resp: 15455
 Ion Ratio Lower Upper
 117 100
 119 4.7 77.2 115.8#
 121 0.0 25.8 38.6#



#50
 Toluene-d8
 Concen: 47.537 ug/l
 RT: 8.647 min Scan# 1240
 Delta R.T. -0.006 min
 Lab File: VX033351.D
 Acq: 09 Dec 2022 16:36

Tgt Ion: 98 Resp: 108951
 Ion Ratio Lower Upper
 98 100
 100 64.0 50.9 76.3

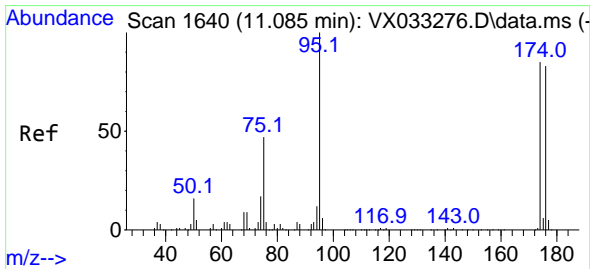
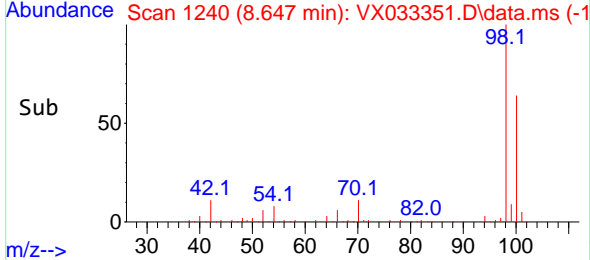
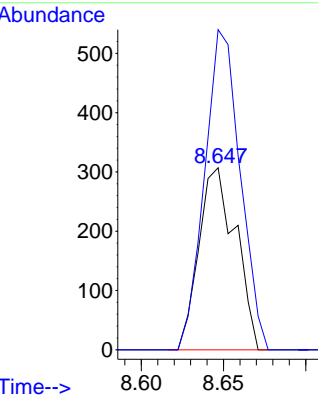
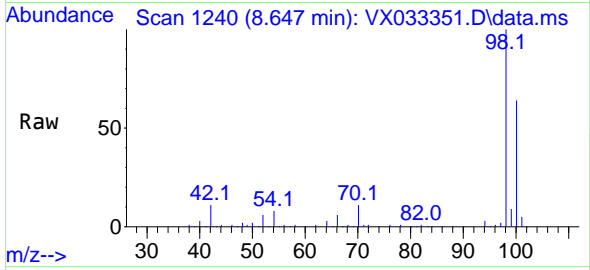




#51
 4-Methyl-2-Pentanone
 Concen: 0.232 ug/l
 RT: 8.647 min Scan# 11
 Delta R.T. 0.073 min
 Lab File: VX033351.D
 Acq: 09 Dec 2022 16:36

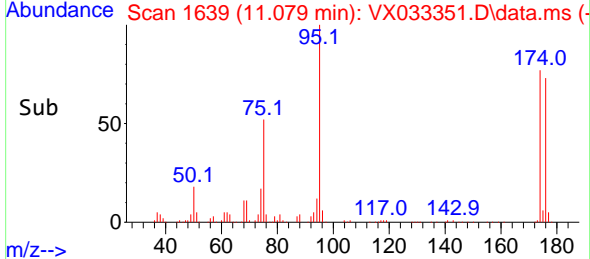
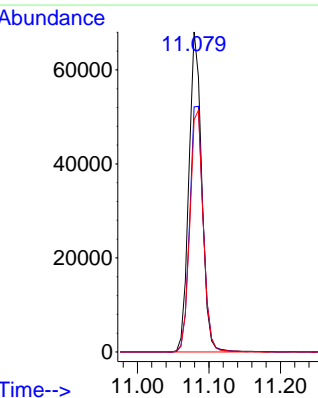
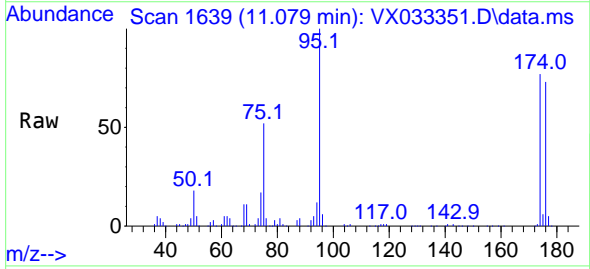
Instrument :
 MSVOA_X
 ClientSampleId :
 TB-01-120822

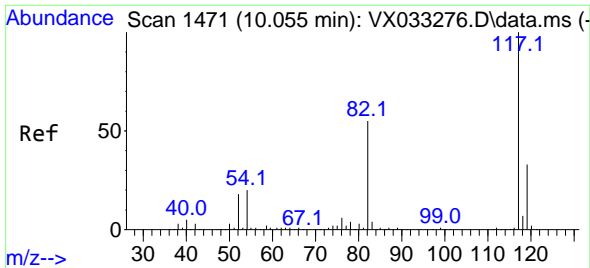
Tgt Ion: 43 Resp: 477
 Ion Ratio Lower Upper
 43 100
 58 170.2 30.9 46.3#



#62
 4-Bromofluorobenzene
 Concen: 48.556 ug/l
 RT: 11.079 min Scan# 1639
 Delta R.T. -0.006 min
 Lab File: VX033351.D
 Acq: 09 Dec 2022 16:36

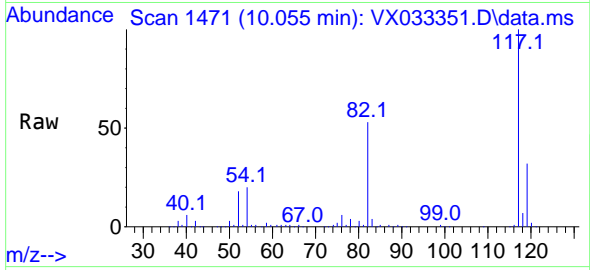
Tgt Ion: 95 Resp: 85092
 Ion Ratio Lower Upper
 95 100
 174 80.8 0.0 164.0
 176 78.1 0.0 154.4



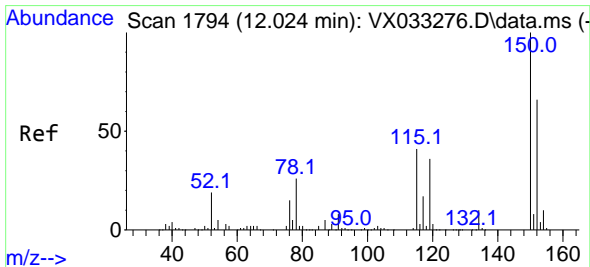
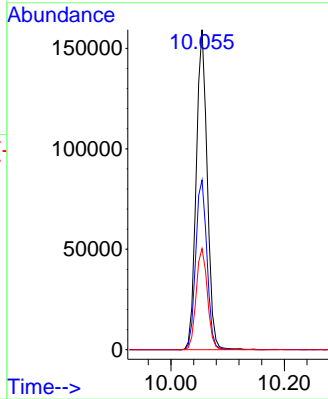
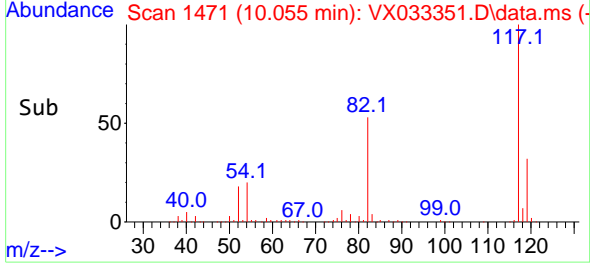


#63
 Chlorobenzene-d5
 Concen: 50.000 ug/l
 RT: 10.055 min Scan# 1471
 Delta R.T. 0.000 min
 Lab File: VX033351.D
 Acq: 09 Dec 2022 16:36

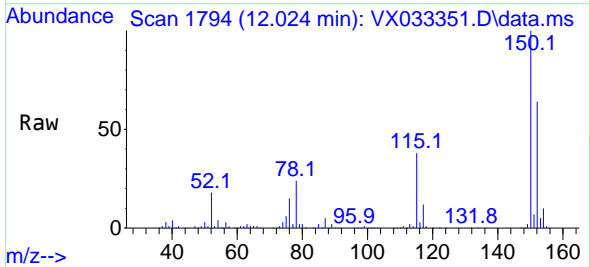
Instrument : MSVOA_X
 ClientSampleId : TB-01-120822



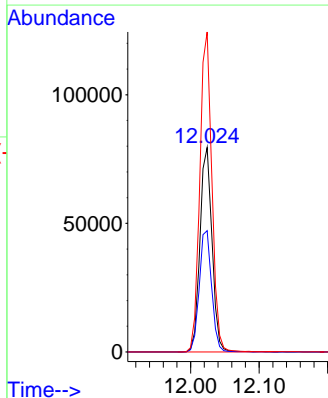
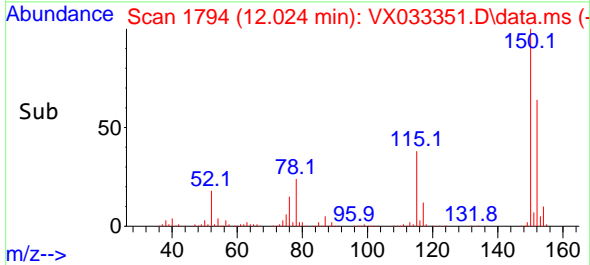
Tgt Ion:117 Resp: 214873
 Ion Ratio Lower Upper
 117 100
 82 53.0 44.3 66.5
 119 31.6 25.7 38.5

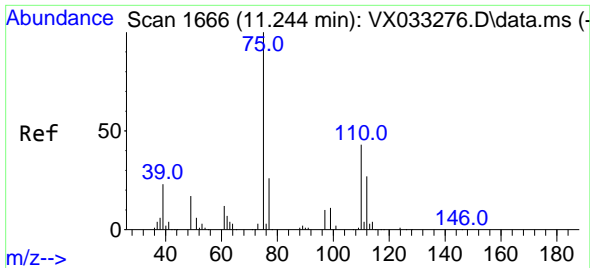


#72
 1,4-Dichlorobenzene-d4
 Concen: 50.000 ug/l
 RT: 12.024 min Scan# 1794
 Delta R.T. 0.000 min
 Lab File: VX033351.D
 Acq: 09 Dec 2022 16:36



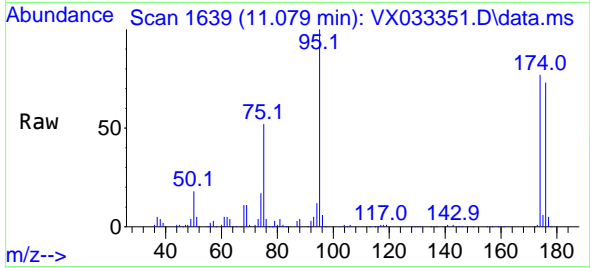
Tgt Ion:152 Resp: 97646
 Ion Ratio Lower Upper
 152 100
 115 60.9 44.0 132.0
 150 156.0 0.0 351.8



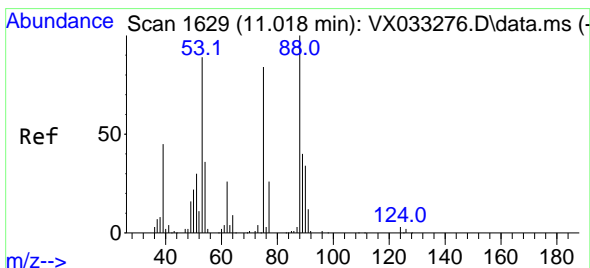
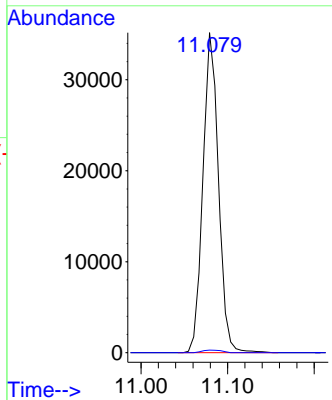
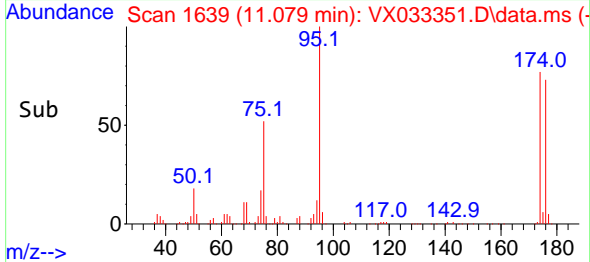


#76
 1,2,3-Trichloropropane
 Concen: 22.069 ug/l
 RT: 11.079 min Scan# 1639
 Delta R.T. -0.164 min
 Lab File: VX033351.D
 Acq: 09 Dec 2022 16:36

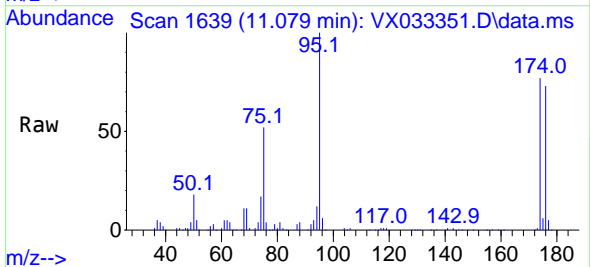
Instrument : MSVOA_X
 ClientSampleId : TB-01-120822



Tgt Ion: 75 Resp: 43842
 Ion Ratio Lower Upper
 75 100
 77 1.0 20.0 60.0#



#81
 trans-1,4-Dichloro-2-butene
 Concen: 68.648 ug/l
 RT: 11.079 min Scan# 1639
 Delta R.T. 0.061 min
 Lab File: VX033351.D
 Acq: 09 Dec 2022 16:36



Tgt Ion: 75 Resp: 43842
 Ion Ratio Lower Upper
 75 100
 53 0.0 86.9 130.3#
 89 0.0 38.3 57.5#

