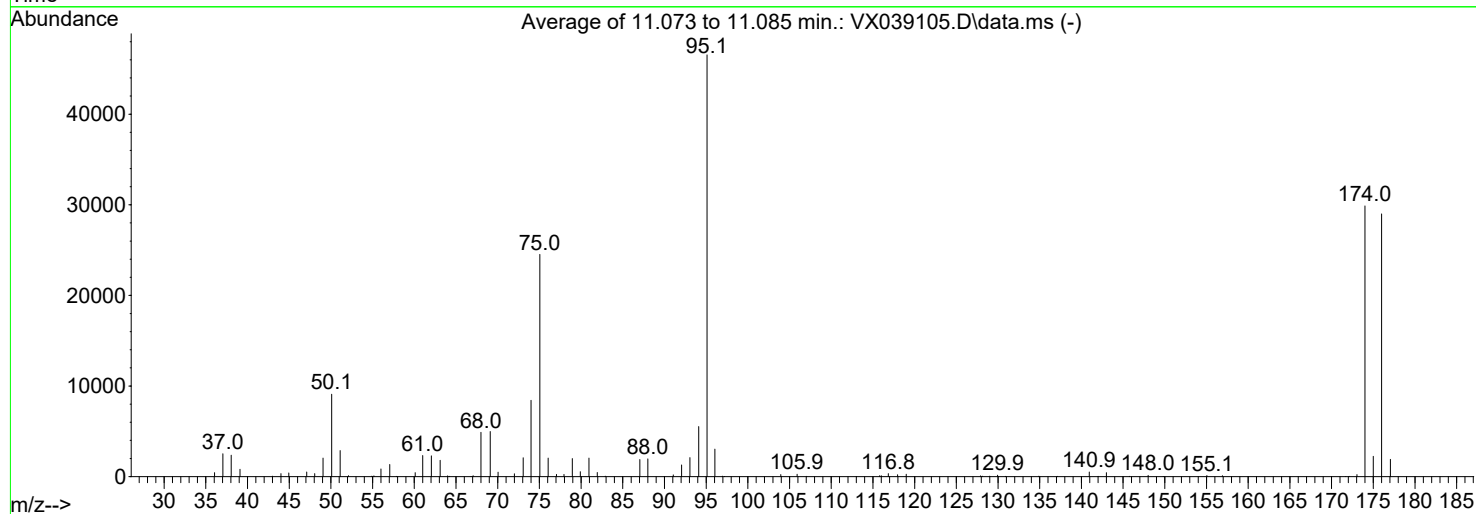
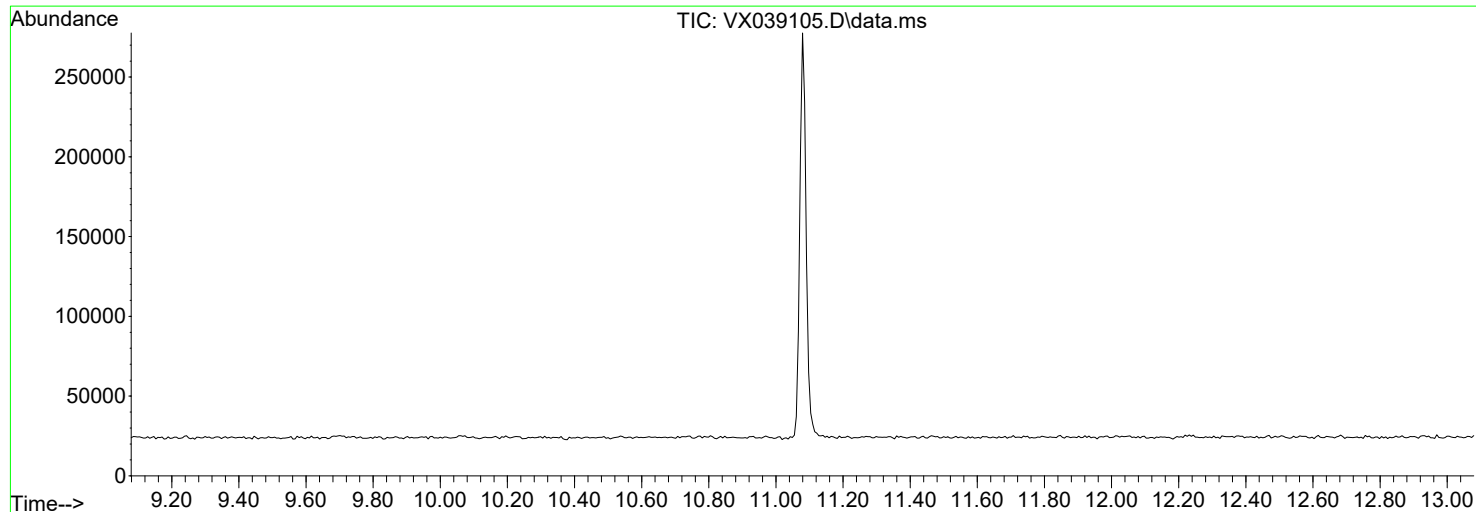


Data Path : Z:\voasrv\HPCHEM1\MSVOA\_X\Data\VX120923\  
 Data File : VX039105.D  
 Acq On : 08 Dec 2023 15:13  
 Operator : JC/MD  
 Sample : BFB653  
 Misc : 5.0mL/MSVOA\_X/WATER  
 ALS Vial : 1 Sample Multiplier: 1

Instrument :  
 MSVOA\_X  
 ClientSampleId :  
 BFB653

Integration File: LSCINT.P

Method : Z:\voasrv\HPCHEM1\MSVOA\_X\Method\SFAMXLM120523WMA.M  
 Title : VOC Analysis  
 Last Update : Tue Dec 12 03:50:51 2023



AutoFind: Scans 1638, 1639, 1640; Background Corrected with Scan 1633

Target Mass	Rel. to Mass	Lower Limit%	Upper Limit%	Rel. Abn%	Raw Abn	Result Pass/Fail
50	95	15	40	19.5	9095	PASS
75	95	30	80	52.7	24523	PASS
95	95	100	100	100.0	46549	PASS
96	95	5	9	6.5	3039	PASS
173	174	0.00	2	0.8	232	PASS
174	95	50	120	64.2	29875	PASS
175	174	5	9	7.5	2241	PASS
176	174	95	101	97.1	28997	PASS
177	176	5	9	6.6	1906	PASS

m/z	Abundance
36.10	69.0
39.10	80.0
40.00	24216.0
44.00	223.0

**Instrument :**  
MSVOA\_X  
**ClientSampleId :**  
BFB653

m/z	Abundance
36.00	522.0
37.10	2579.0
38.00	2310.0
39.10	829.0
40.00	23520.0
44.00	674.0
45.00	425.0
47.10	405.0
48.10	344.0
49.10	1806.0
50.10	8473.0
51.10	2575.0
52.10	147.0
55.20	149.0
56.00	761.0
57.00	1261.0
57.90	76.0
60.10	366.0
61.00	2159.0
62.10	2289.0
63.10	1489.0
64.00	98.0
66.80	78.0
68.00	4070.0
69.10	4352.0
70.10	431.0
72.00	318.0
73.00	1685.0
74.00	7540.0
75.10	22184.0
76.00	1936.0
77.00	261.0
78.00	283.0
78.90	1717.0
79.90	519.0
80.90	1879.0
82.00	375.0
82.90	74.0
87.00	1589.0
88.00	1387.0
91.00	175.0
92.10	1077.0
93.10	1885.0
94.10	4562.0
95.10	38984.0
96.10	2620.0
96.90	65.0
97.20	52.0
104.00	251.0
105.90	298.0
115.80	137.0
116.80	254.0
118.00	162.0
119.00	206.0
127.90	130.0
130.00	133.0
140.90	458.0
142.90	340.0
145.80	66.0
148.10	53.0
155.10	98.0
156.90	84.0
173.10	127.0
174.00	21824.0
175.00	1691.0
176.00	21648.0
177.00	1620.0

**Instrument :**  
MSVOA\_X  
**ClientSampleId :**  
BFB653

m/z	Abundance
36.10	548.0
37.00	2973.0
38.10	2898.0
39.10	1040.0
40.00	23528.0
43.00	97.0
44.00	571.0
45.00	456.0
47.20	717.0
48.00	428.0
49.10	2312.0
50.10	10977.0
51.10	3432.0
52.10	121.0
54.90	158.0
56.00	1008.0
57.00	1409.0
57.90	59.0
60.10	498.0
61.00	2696.0
62.00	2530.0
63.10	2201.0
64.00	183.0
67.10	171.0
68.00	5820.0
69.10	6109.0
70.10	460.0
72.00	396.0
73.00	2661.0
74.00	9642.0
75.00	29592.0
76.10	2594.0
77.00	245.0
77.90	257.0
78.90	2132.0
79.90	573.0
81.00	2380.0
82.00	594.0
82.90	63.0
87.10	2227.0
88.00	2490.0
91.00	237.0
92.00	1530.0
93.00	2265.0
94.10	6689.0
95.10	55152.0
96.10	3857.0
97.00	106.0
104.00	197.0
105.90	264.0
107.00	51.0
116.00	336.0
116.90	485.0
117.90	242.0
119.00	346.0
127.90	120.0
129.00	100.0
129.90	202.0
131.00	54.0
134.90	65.0
141.00	526.0
142.00	55.0
143.00	594.0
145.70	60.0
148.00	134.0
155.10	153.0
156.90	144.0
171.70	82.0
173.00	354.0
174.00	35240.0
175.00	2842.0
176.00	33744.0
177.10	2116.0

**Instrument :**  
MSVOA\_X  
**ClientSampleId :**  
BFB653

m/z	Abundance
36.10	487.0
37.10	2015.0
38.00	1905.0
39.10	794.0
40.00	23720.0
43.00	61.0
44.00	455.0
44.90	349.0
47.00	419.0
48.00	229.0
49.00	2041.0
50.10	7834.0
51.10	2627.0
52.00	71.0
55.10	110.0
56.00	763.0
57.10	1383.0
60.10	479.0
61.00	2166.0
62.10	2084.0
63.10	1702.0
64.20	117.0
67.00	144.0
68.00	4769.0
69.10	4495.0
69.90	291.0
70.10	285.0
71.90	223.0
73.10	1934.0
74.00	8078.0
75.00	21792.0
76.10	1625.0
77.10	245.0
78.00	227.0
79.00	2130.0
79.90	529.0
80.90	1877.0
81.90	417.0
87.00	1863.0
88.00	2016.0
91.10	172.0
92.00	1258.0
93.00	2165.0
94.10	5352.0
95.10	45512.0
96.00	2639.0
103.80	223.0
105.90	246.0
107.10	51.0
113.00	50.0
115.80	188.0
116.90	258.0
118.00	238.0
119.00	237.0
128.10	146.0
129.00	89.0
129.90	131.0
130.80	52.0
134.90	97.0
137.10	96.0
141.00	529.0
142.00	62.0
143.10	392.0
148.00	250.0
149.80	57.0
155.00	128.0
157.00	70.0
172.10	129.0
173.00	215.0
174.00	32560.0
175.00	2189.0
176.00	31600.0
177.00	1982.0

**Instrument :**  
MSVOA\_X  
**ClientSampleId :**  
BFB653