

Data Path : Z:\voasrv\HPCHEM1\MSVOA\_X\Data\VX120925\  
 Data File : VX048771.D  
 Acq On : 09 Dec 2025 10:36  
 Operator : JC/MD  
 Sample : Q3803-01 100X  
 Misc : 5.0mL/MSVOA\_X/WATER  
 ALS Vial : 5 Sample Multiplier: 1

Instrument :  
 MSVOA\_X  
 ClientSampleId :  
 CHASE-A

Quant Time: Dec 10 00:14:30 2025  
 Quant Method : Z:\voasrv\HPCHEM1\MSVOA\_X\Method\82X120425W.M  
 Quant Title : SW846 8260  
 QLast Update : Fri Dec 05 03:27:34 2025  
 Response via : Initial Calibration

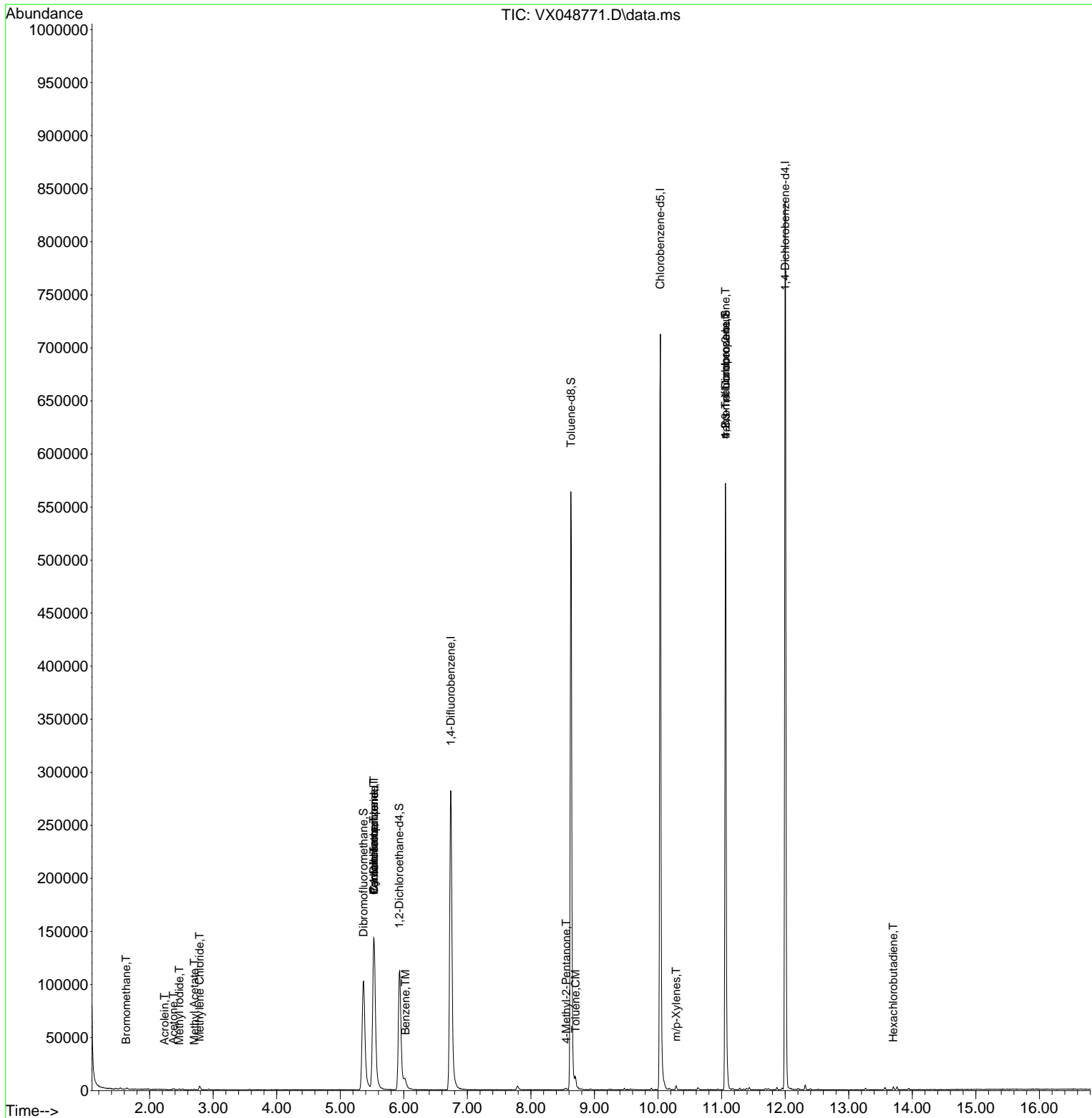
Compound	R.T.	QIon	Response	Conc	Units	Dev(Min)
-----						
Internal Standards						
1) Pentafluorobenzene	5.532	168	150176	50.000	ug/l	0.00
34) 1,4-Difluorobenzene	6.739	114	318316	50.000	ug/l	0.00
63) Chlorobenzene-d5	10.037	117	349523	50.000	ug/l	0.00
72) 1,4-Dichlorobenzene-d4	12.000	152	181526	50.000	ug/l	0.00
System Monitoring Compounds						
33) 1,2-Dichloroethane-d4	5.928	65	125893	62.458	ug/l	-0.01
Spiked Amount	50.000	Range 78 - 117	Recovery	=	124.920%#	
35) Dibromofluoromethane	5.367	113	103265	47.116	ug/l	0.00
Spiked Amount	50.000	Range 75 - 124	Recovery	=	94.240%	
50) Toluene-d8	8.629	98	366099	47.652	ug/l	0.00
Spiked Amount	50.000	Range 92 - 112	Recovery	=	95.300%	
62) 4-Bromofluorobenzene	11.061	95	162782	61.445	ug/l	0.00
Spiked Amount	50.000	Range 83 - 123	Recovery	=	122.880%	
Target Compounds						
						Qvalue
5) Bromomethane	1.630	94	357	0.281	ug/l	84
10) Methyl Iodide	2.465	142	826	0.340	ug/l #	88
13) Acrolein	2.233	56	94	40.428	ug/l	86
16) Acetone	2.374	43	1801	2.334	ug/l #	84
18) Methyl Acetate	2.703	43	986	0.454	ug/l #	67
20) Methylene Chloride	2.788	84	1656	0.859	ug/l #	84
31) Cyclohexane	5.525	56	3292	1.208	ug/l #	11
36) 1,1-Dichloropropene	5.525	75	11802	3.932	ug/l #	49
38) Carbon Tetrachloride	5.532	117	15015	4.416	ug/l #	14
40) Benzene	6.025	78	9146	1.028	ug/l	94
51) 4-Methyl-2-Pentanone	8.555	43	1229	0.365	ug/l #	53
52) Toluene	8.702	92	3578	0.667	ug/l	98
68) m/p-Xylenes	10.287	106	990	0.204	ug/l	85
76) 1,2,3-Trichloropropane	11.061	75	82371	24.363	ug/l #	30
81) trans-1,4-Dichloro-2-b...	11.061	75	82371	57.872	ug/l #	3
94) Hexachlorobutadiene	13.701	225	580	0.364	ug/l	95
95) Naphthalene	13.756	128	2173	Below Cal		99

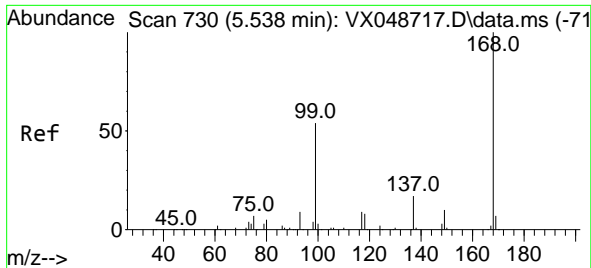
(#) = qualifier out of range (m) = manual integration (+) = signals summed

Data Path : Z:\voasrv\HPCHEM1\MSVOA\_X\Data\VX120925\  
 Data File : VX048771.D  
 Acq On : 09 Dec 2025 10:36  
 Operator : JC/MD  
 Sample : Q3803-01 100X  
 Misc : 5.0mL/MSVOA\_X/WATER  
 ALS Vial : 5 Sample Multiplier: 1

Instrument :  
 MSVOA\_X  
 ClientSampleId :  
 CHASE-A

Quant Time: Dec 10 00:14:30 2025  
 Quant Method : Z:\voasrv\HPCHEM1\MSVOA\_X\Method\82X120425W.M  
 Quant Title : SW846 8260  
 QLast Update : Fri Dec 05 03:27:34 2025  
 Response via : Initial Calibration

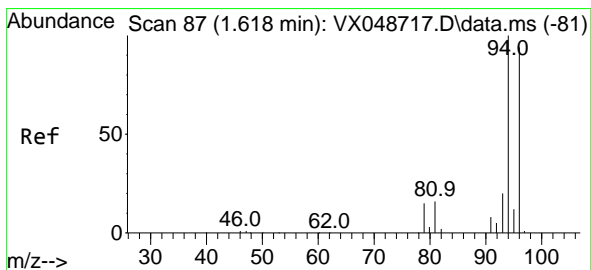
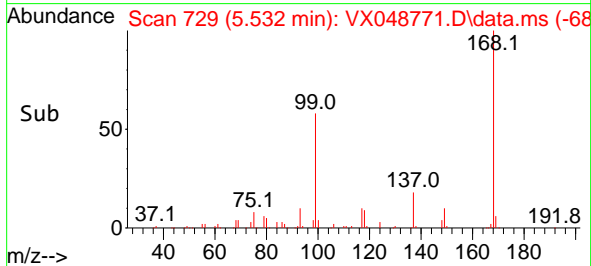
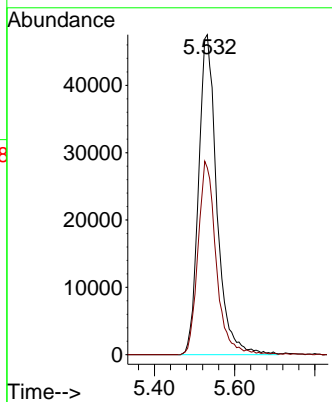
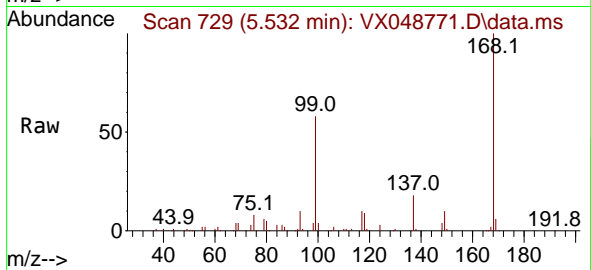




#1  
 Pentafluorobenzene  
 Concen: 50.000 ug/l  
 RT: 5.532 min Scan# 71  
 Delta R.T. -0.006 min  
 Lab File: VX048771.D  
 Acq: 09 Dec 2025 10:36

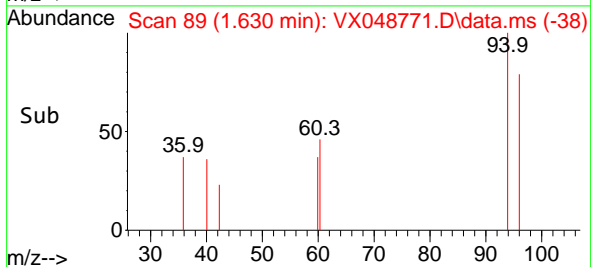
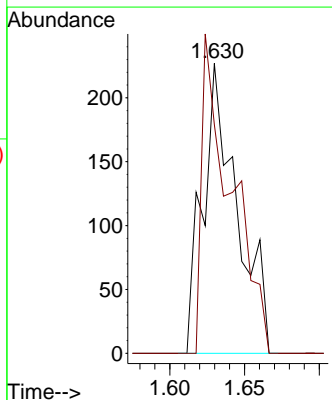
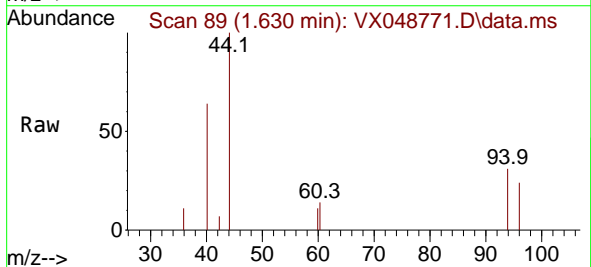
Instrument :  
 MSVOA\_X  
 ClientSampleId :  
 CHASE-A

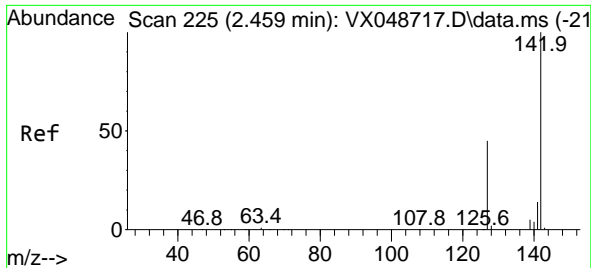
Tgt Ion:168 Resp: 150176  
 Ion Ratio Lower Upper  
 168 100  
 99 58.4 44.2 66.4



#5  
 Bromomethane  
 Concen: 0.281 ug/l  
 RT: 1.630 min Scan# 89  
 Delta R.T. 0.012 min  
 Lab File: VX048771.D  
 Acq: 09 Dec 2025 10:36

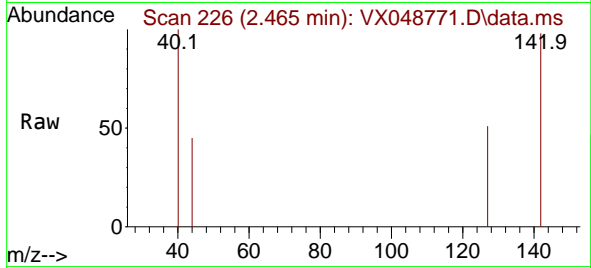
Tgt Ion: 94 Resp: 357  
 Ion Ratio Lower Upper  
 94 100  
 96 78.9 75.2 112.8



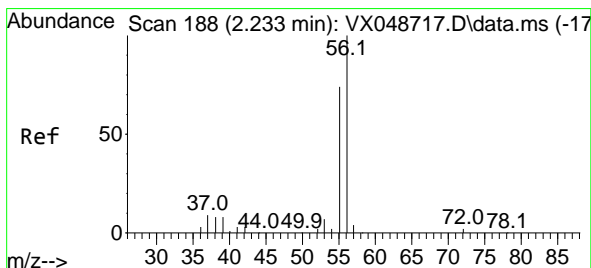
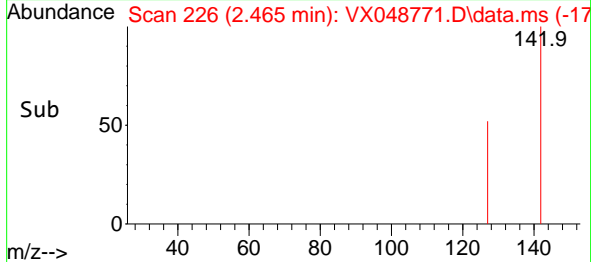
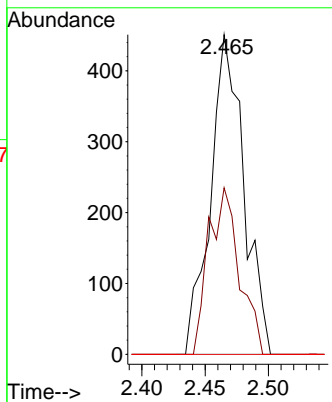


#10  
Methyl Iodide  
Concen: 0.340 ug/l  
RT: 2.465 min Scan# 21  
Delta R.T. 0.006 min  
Lab File: VX048771.D  
Acq: 09 Dec 2025 10:36

Instrument :  
MSVOA\_X  
ClientSampleId :  
CHASE-A

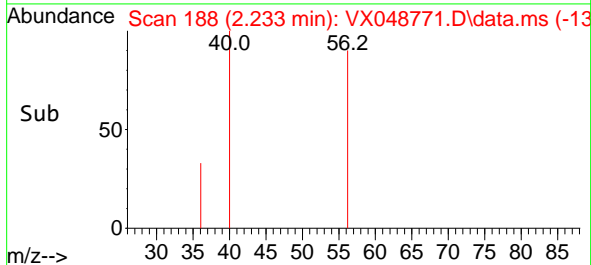
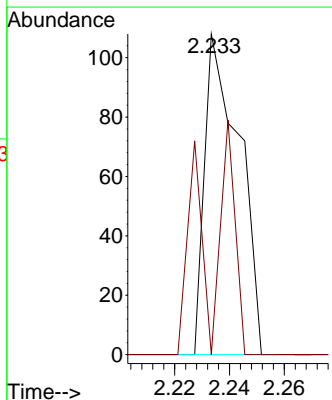
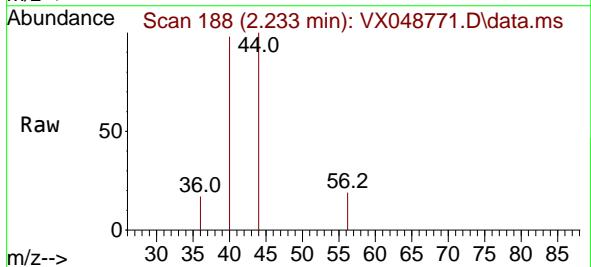


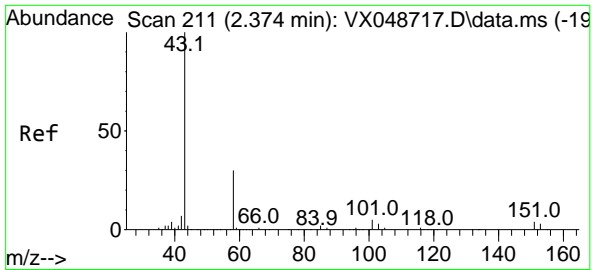
Tgt Ion:142 Resp: 826  
Ion Ratio Lower Upper  
142 100  
127 48.3 35.8 53.6  
141 0.0 11.1 16.7#



#13  
Acrolein  
Concen: 40.428 ug/l  
RT: 2.233 min Scan# 188  
Delta R.T. 0.000 min  
Lab File: VX048771.D  
Acq: 09 Dec 2025 10:36

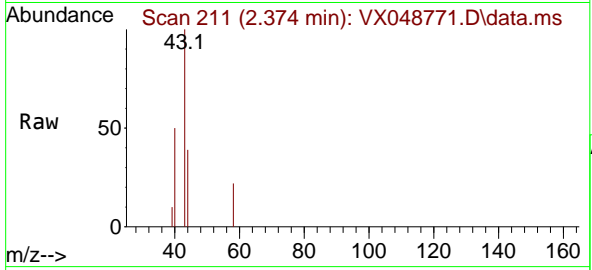
Tgt Ion: 56 Resp: 94  
Ion Ratio Lower Upper  
56 100  
55 58.5 55.8 83.6



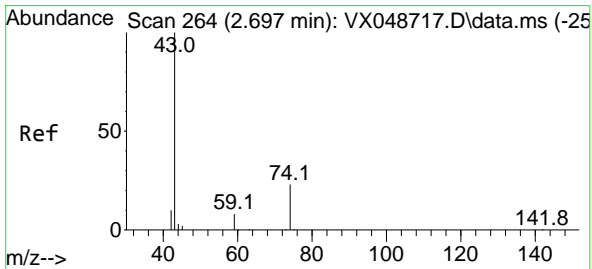
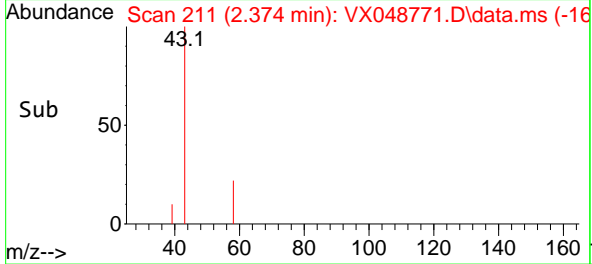
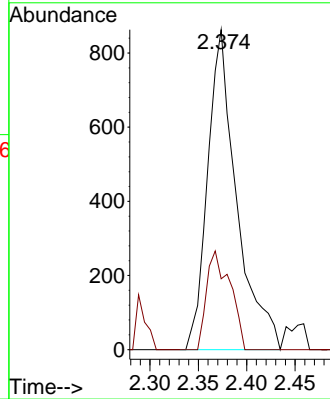


#16  
 Acetone  
 Concen: 2.334 ug/l  
 RT: 2.374 min Scan# 211  
 Delta R.T. 0.000 min  
 Lab File: VX048771.D  
 Acq: 09 Dec 2025 10:36

Instrument :  
 MSVOA\_X  
 Client Sample Id :  
 CHASE-A

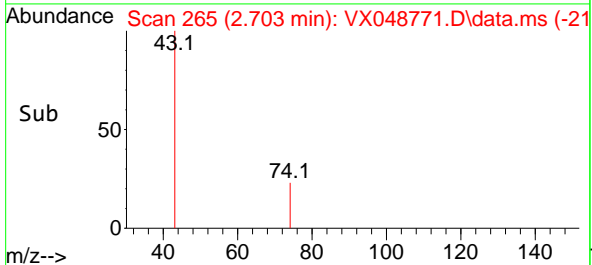
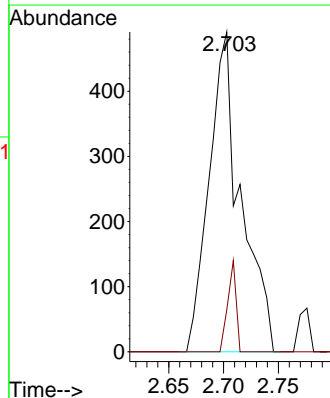
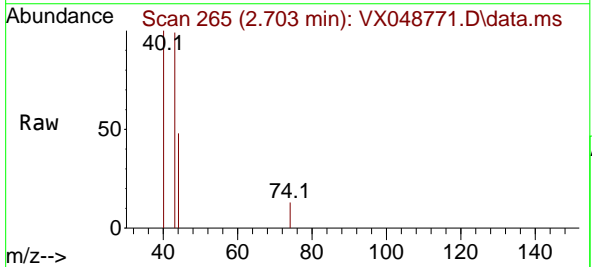


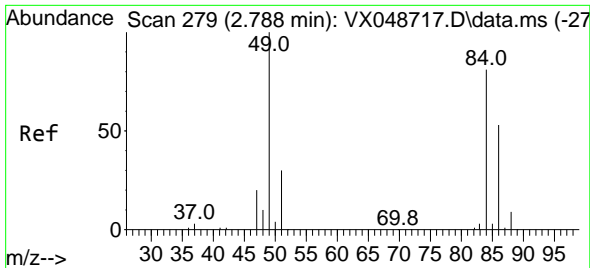
Tgt Ion: 43 Resp: 1801  
 Ion Ratio Lower Upper  
 43 100  
 58 22.1 25.0 37.4#



#18  
 Methyl Acetate  
 Concen: 0.454 ug/l  
 RT: 2.703 min Scan# 265  
 Delta R.T. 0.006 min  
 Lab File: VX048771.D  
 Acq: 09 Dec 2025 10:36

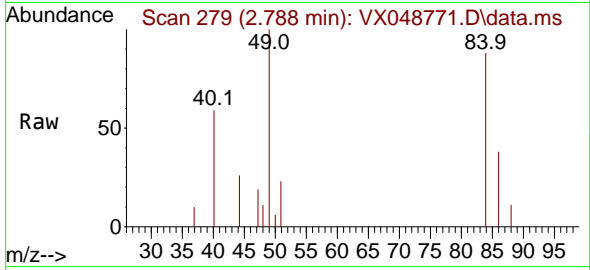
Tgt Ion: 43 Resp: 986  
 Ion Ratio Lower Upper  
 43 100  
 74 7.6 19.2 28.8#





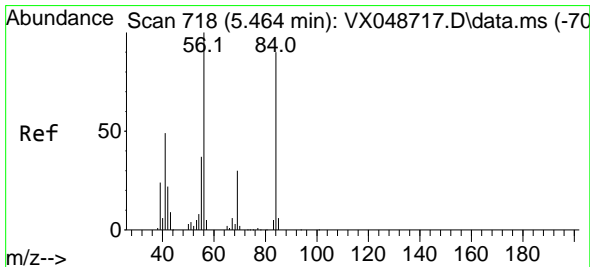
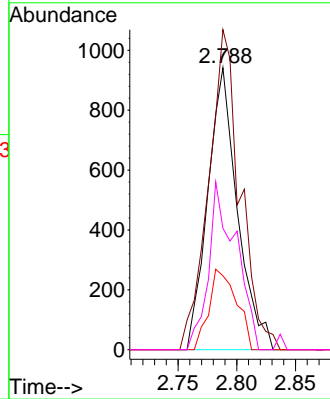
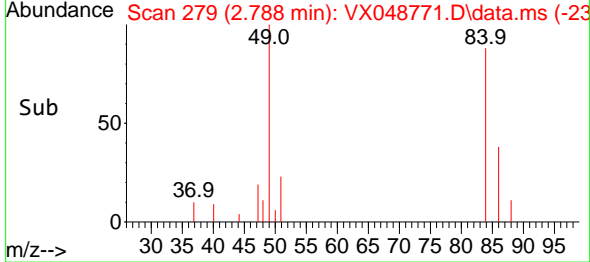
#20  
 Methylene Chloride  
 Concen: 0.859 ug/l  
 RT: 2.788 min Scan# 21  
 Delta R.T. 0.000 min  
 Lab File: VX048771.D  
 Acq: 09 Dec 2025 10:36

Instrument :  
 MSVOA\_X  
 ClientSampleId :  
 CHASE-A

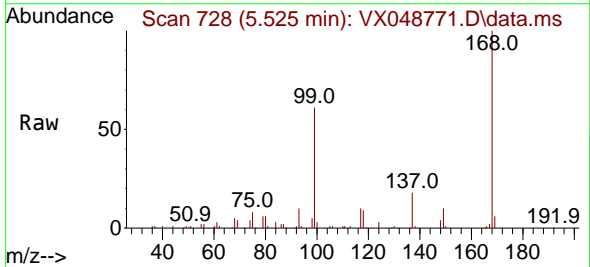


Tgt Ion: 84 Resp: 1656

Ion	Ratio	Lower	Upper
84	100		
49	113.5	98.7	148.1
51	26.2	29.4	44.2#
86	43.1	52.5	78.7#

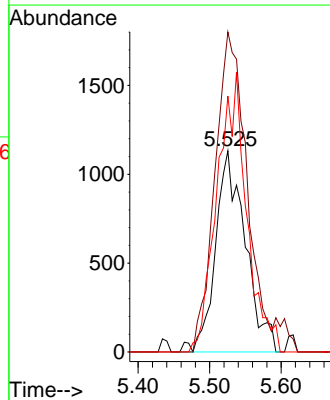
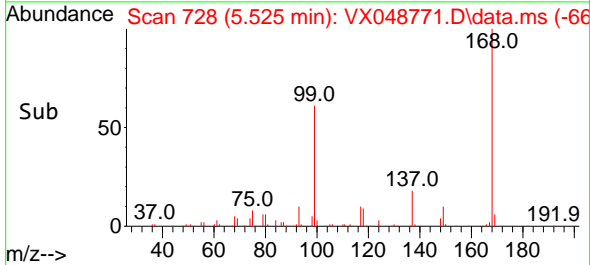


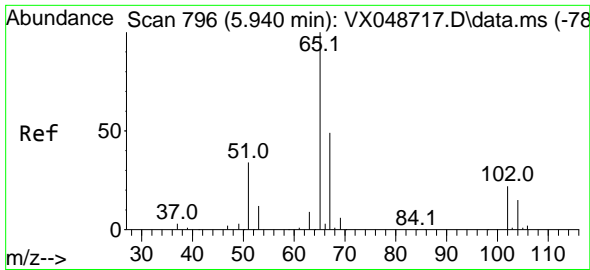
#31  
 Cyclohexane  
 Concen: 1.208 ug/l  
 RT: 5.525 min Scan# 728  
 Delta R.T. 0.061 min  
 Lab File: VX048771.D  
 Acq: 09 Dec 2025 10:36



Tgt Ion: 56 Resp: 3292

Ion	Ratio	Lower	Upper
56	100		
69	159.1	24.2	36.2#
84	127.2	72.1	108.1#

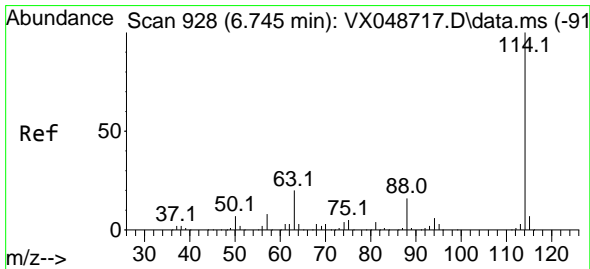
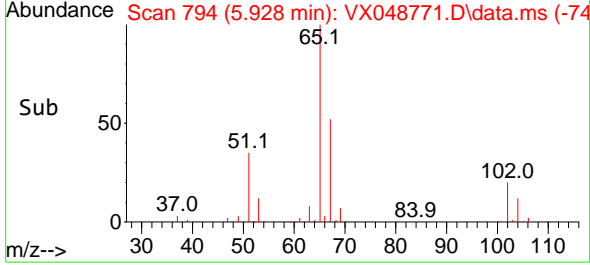
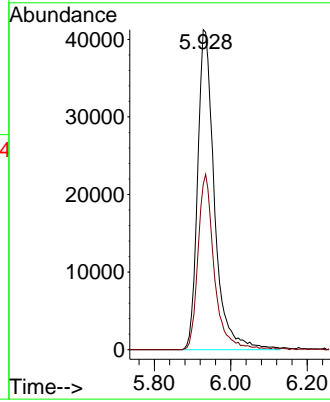
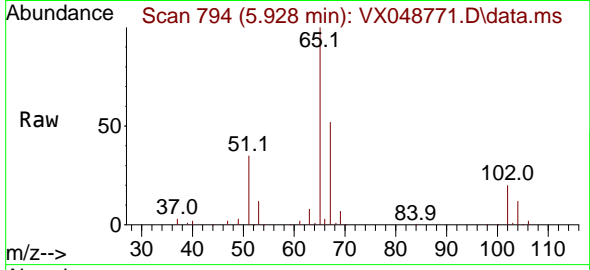




#33  
 1,2-Dichloroethane-d4  
 Concen: 62.458 ug/l  
 RT: 5.928 min Scan# 794  
 Delta R.T. -0.012 min  
 Lab File: VX048771.D  
 Acq: 09 Dec 2025 10:36

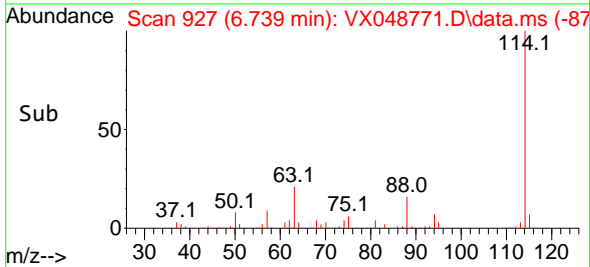
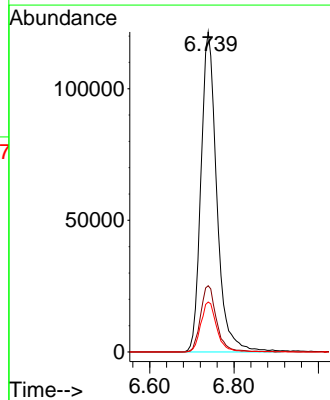
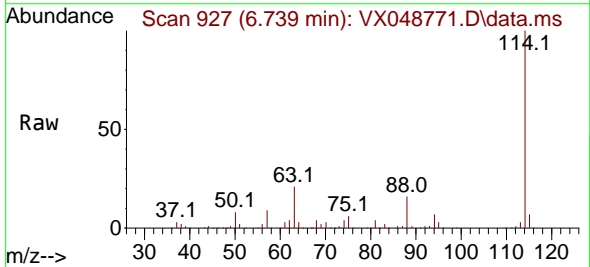
Instrument :  
 MSVOA\_X  
 ClientSampleId :  
 CHASE-A

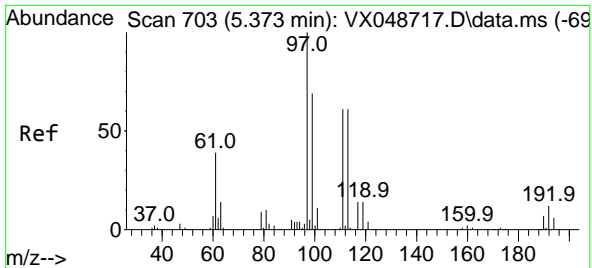
Tgt Ion: 65 Resp: 125893  
 Ion Ratio Lower Upper  
 65 100  
 67 52.9 0.0 107.4



#34  
 1,4-Difluorobenzene  
 Concen: 50.000 ug/l  
 RT: 6.739 min Scan# 927  
 Delta R.T. -0.006 min  
 Lab File: VX048771.D  
 Acq: 09 Dec 2025 10:36

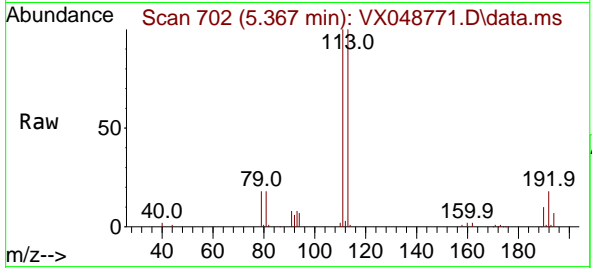
Tgt Ion: 114 Resp: 318316  
 Ion Ratio Lower Upper  
 114 100  
 63 20.7 0.0 39.0  
 88 15.6 0.0 31.8



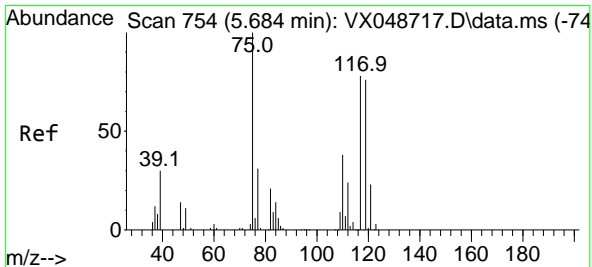
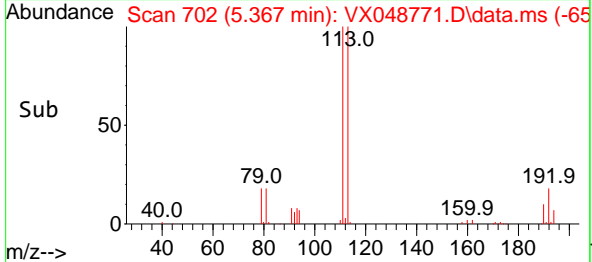
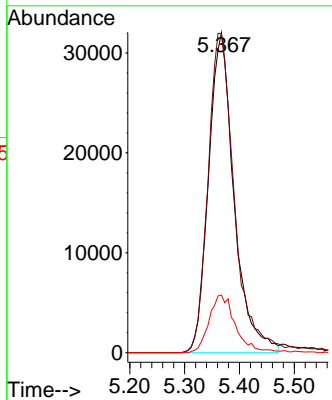


#35  
 Dibromofluoromethane  
 Concen: 47.116 ug/l  
 RT: 5.367 min Scan# 702  
 Delta R.T. -0.006 min  
 Lab File: VX048771.D  
 Acq: 09 Dec 2025 10:36

Instrument :  
 MSVOA\_X  
 ClientSampleId :  
 CHASE-A

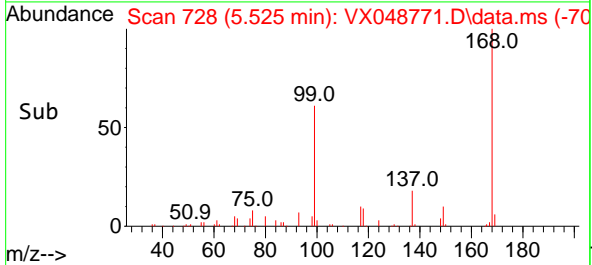
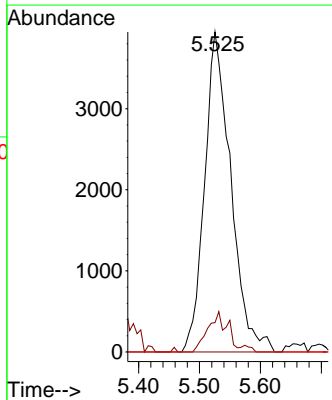
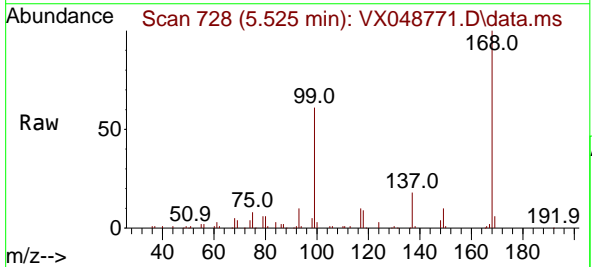


Tgt Ion:113 Resp: 103265  
 Ion Ratio Lower Upper  
 113 100  
 111 103.7 79.5 119.3  
 192 18.8 16.1 24.1

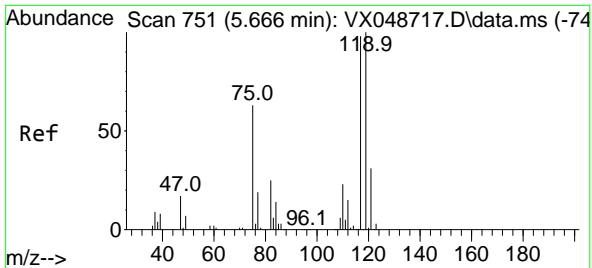


#36  
 1,1-Dichloropropene  
 Concen: 3.932 ug/l  
 RT: 5.525 min Scan# 728  
 Delta R.T. -0.158 min  
 Lab File: VX048771.D  
 Acq: 09 Dec 2025 10:36

Tgt Ion: 75 Resp: 11802  
 Ion Ratio Lower Upper  
 75 100  
 110 9.3 18.6 55.8#  
 77 0.0 25.3 37.9#



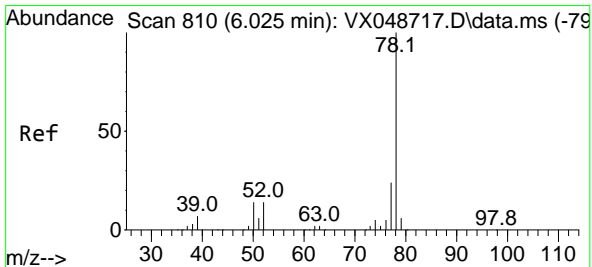
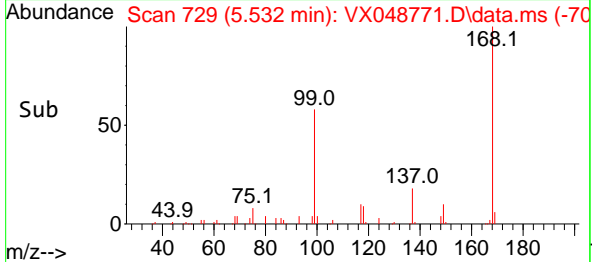
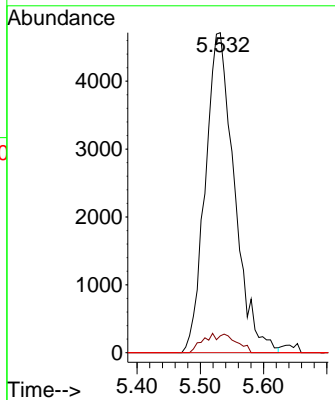
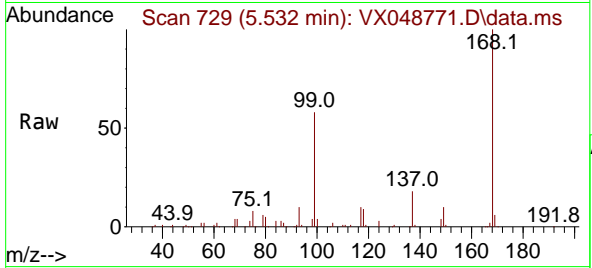




#38  
 Carbon Tetrachloride  
 Concen: 4.416 ug/l  
 RT: 5.532 min Scan# 719  
 Delta R.T. -0.134 min  
 Lab File: VX048771.D  
 Acq: 09 Dec 2025 10:36

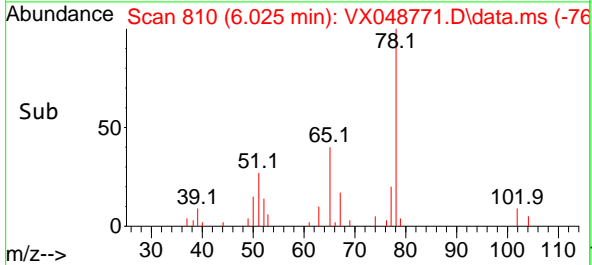
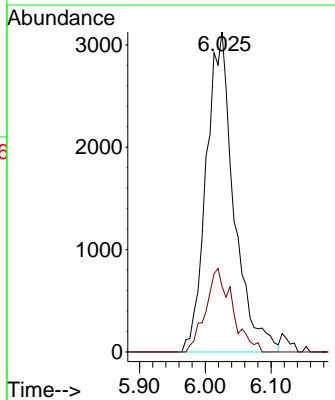
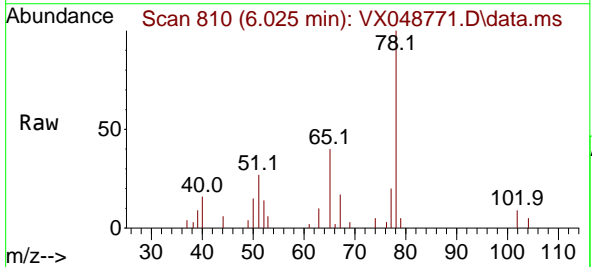
Instrument :  
 MSVOA\_X  
 ClientSampleId :  
 CHASE-A

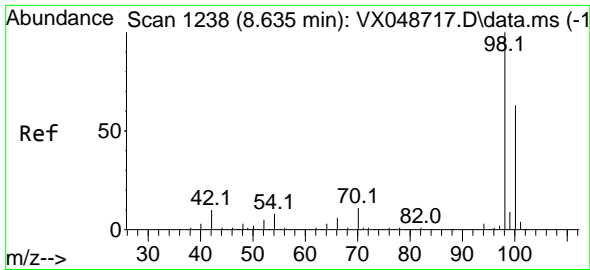
Tgt Ion:117 Resp: 15015  
 Ion Ratio Lower Upper  
 117 100  
 119 5.3 80.5 120.7#  
 121 0.0 25.4 38.0#



#40  
 Benzene  
 Concen: 1.028 ug/l  
 RT: 6.025 min Scan# 810  
 Delta R.T. 0.000 min  
 Lab File: VX048771.D  
 Acq: 09 Dec 2025 10:36

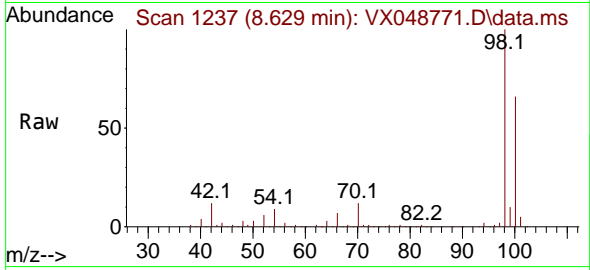
Tgt Ion: 78 Resp: 9146  
 Ion Ratio Lower Upper  
 78 100  
 77 20.4 18.8 28.2



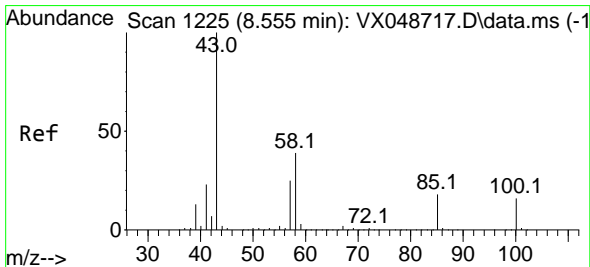
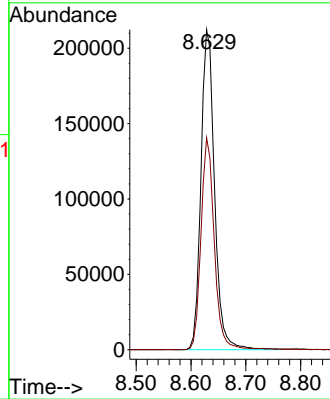
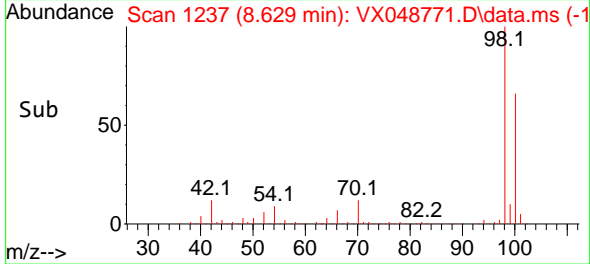


#50  
 Toluene-d8  
 Concen: 47.652 ug/l  
 RT: 8.629 min Scan# 11  
 Delta R.T. -0.006 min  
 Lab File: VX048771.D  
 Acq: 09 Dec 2025 10:36

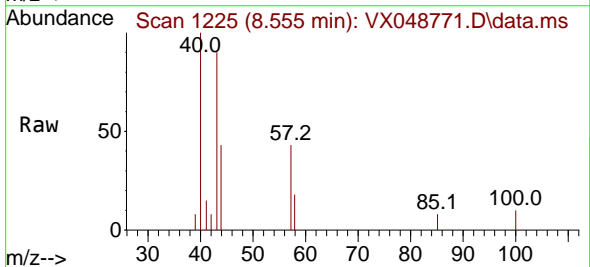
Instrument :  
 MSVOA\_X  
 ClientSampleId :  
 CHASE-A



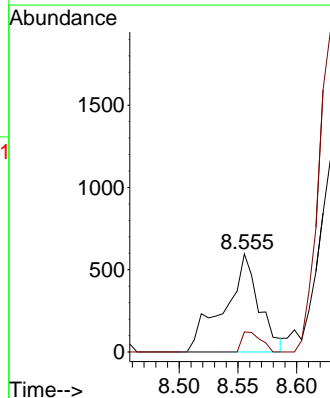
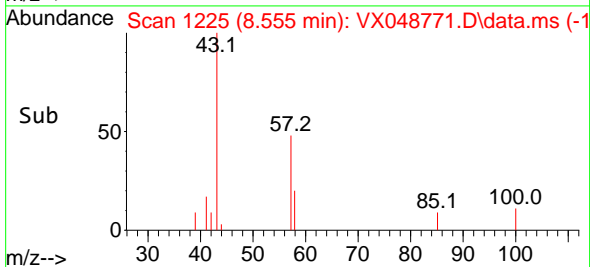
Tgt Ion: 98 Resp: 366099  
 Ion Ratio Lower Upper  
 98 100  
 100 64.8 53.4 80.0

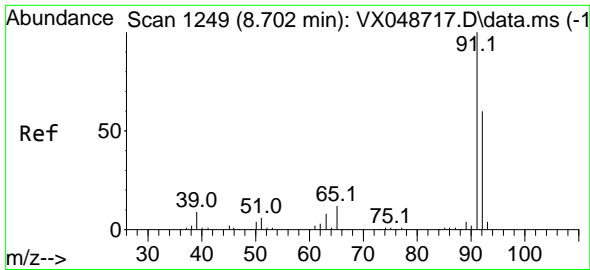


#51  
 4-Methyl-2-Pentanone  
 Concen: 0.365 ug/l  
 RT: 8.555 min Scan# 1225  
 Delta R.T. 0.000 min  
 Lab File: VX048771.D  
 Acq: 09 Dec 2025 10:36



Tgt Ion: 43 Resp: 1229  
 Ion Ratio Lower Upper  
 43 100  
 58 11.2 32.2 48.4#

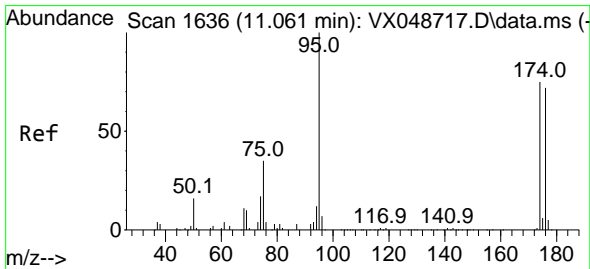
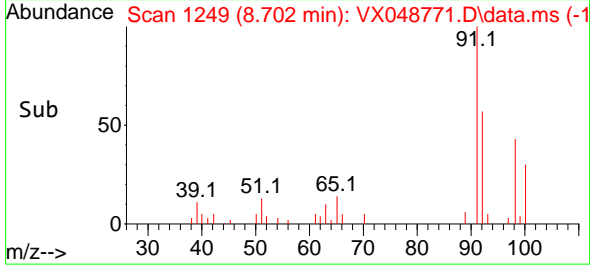
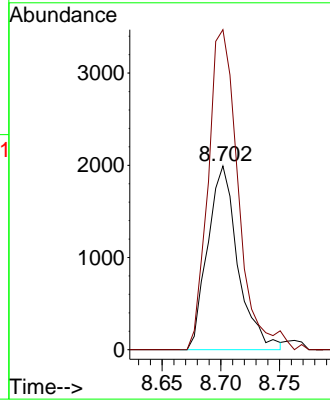
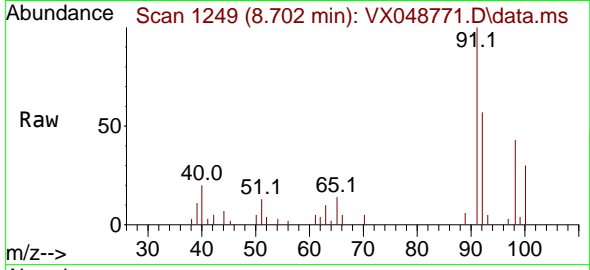




#52  
 Toluene  
 Concen: 0.667 ug/l  
 RT: 8.702 min Scan# 1249  
 Delta R.T. 0.000 min  
 Lab File: VX048771.D  
 Acq: 09 Dec 2025 10:36

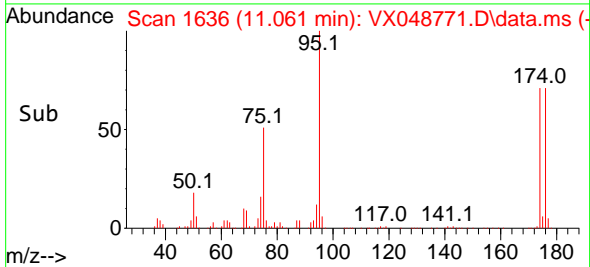
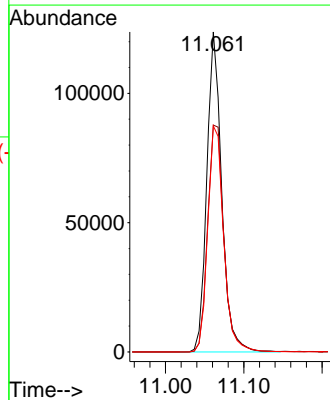
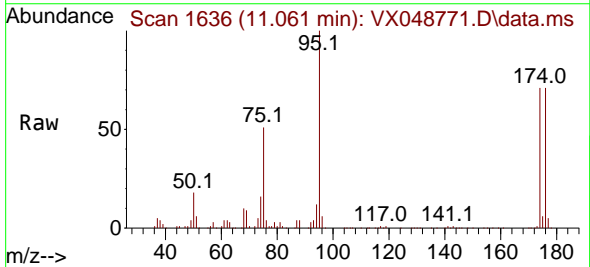
Instrument :  
 MSVOA\_X  
 ClientSampleId :  
 CHASE-A

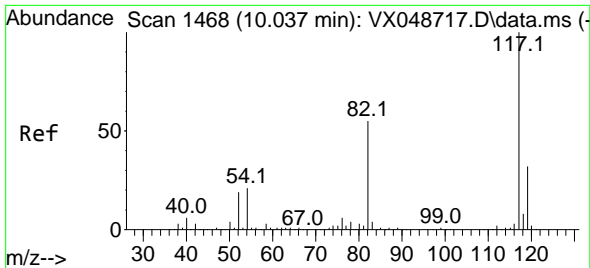
Tgt Ion: 92 Resp: 3578  
 Ion Ratio Lower Upper  
 92 100  
 91 173.7 136.3 204.5



#62  
 4-Bromofluorobenzene  
 Concen: 61.445 ug/l  
 RT: 11.061 min Scan# 1636  
 Delta R.T. 0.000 min  
 Lab File: VX048771.D  
 Acq: 09 Dec 2025 10:36

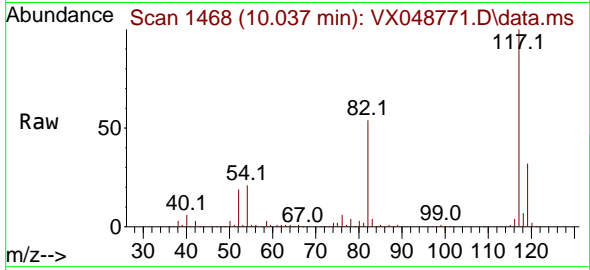
Tgt Ion: 95 Resp: 162782  
 Ion Ratio Lower Upper  
 95 100  
 174 77.9 0.0 157.8  
 176 75.6 0.0 154.0



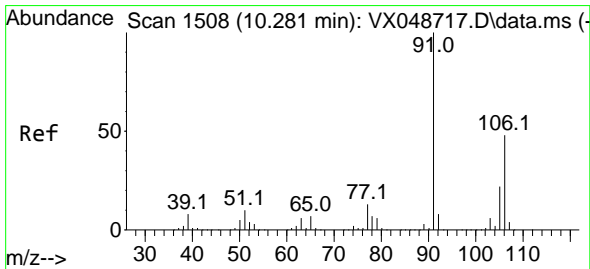
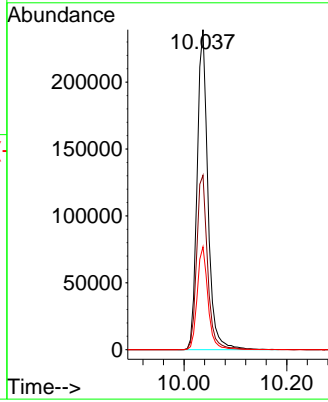
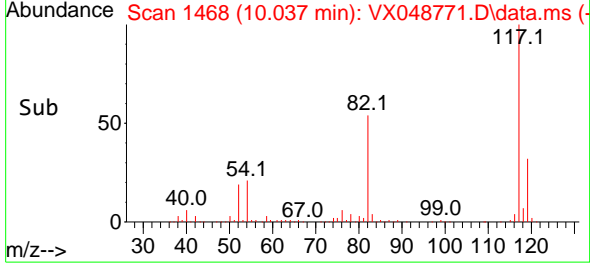


#63  
 Chlorobenzene-d5  
 Concen: 50.000 ug/l  
 RT: 10.037 min Scan# 14  
 Delta R.T. 0.000 min  
 Lab File: VX048771.D  
 Acq: 09 Dec 2025 10:36

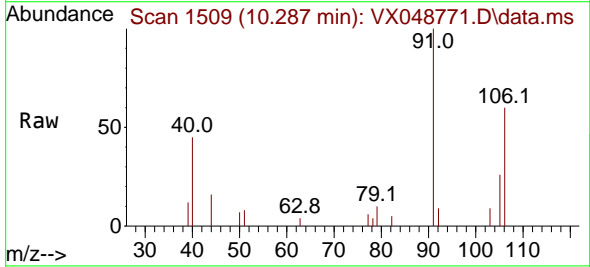
Instrument :  
 MSVOA\_X  
 ClientSampleId :  
 CHASE-A



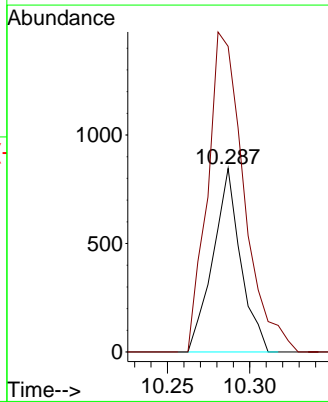
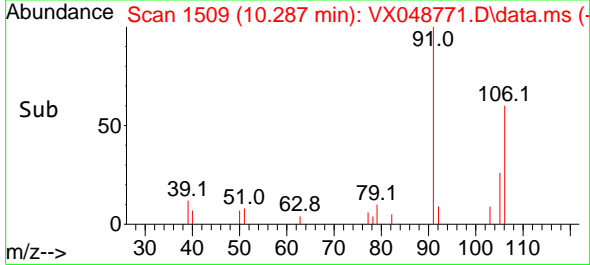
Tgt Ion:117 Resp: 349523  
 Ion Ratio Lower Upper  
 117 100  
 82 54.5 44.1 66.1  
 119 32.2 25.2 37.8

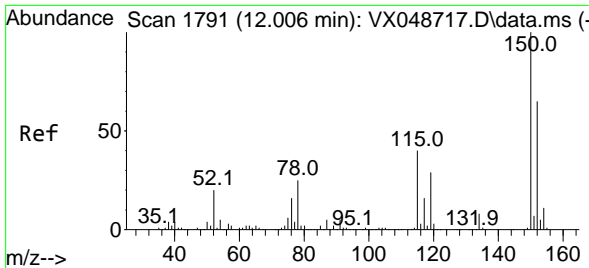


#68  
 m/p-Xylenes  
 Concen: 0.204 ug/l  
 RT: 10.287 min Scan# 1509  
 Delta R.T. 0.006 min  
 Lab File: VX048771.D  
 Acq: 09 Dec 2025 10:36



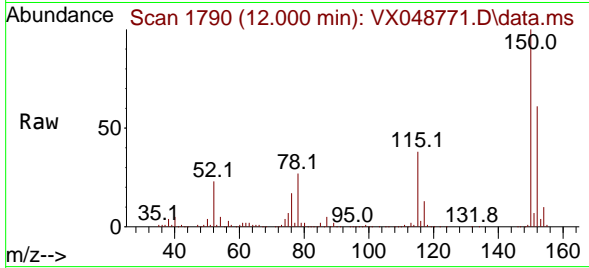
Tgt Ion:106 Resp: 990  
 Ion Ratio Lower Upper  
 106 100  
 91 228.6 164.2 246.4



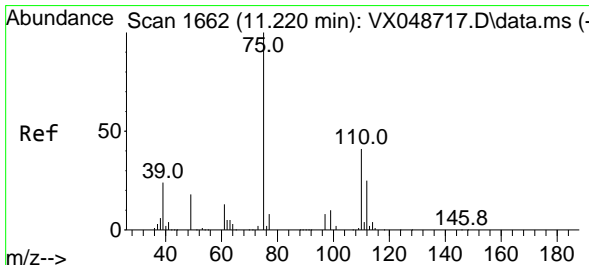
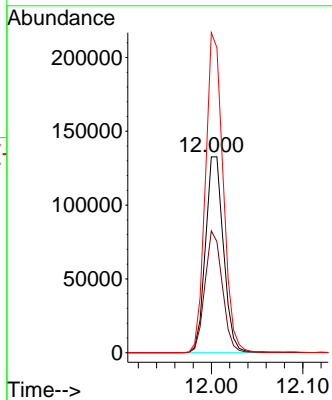
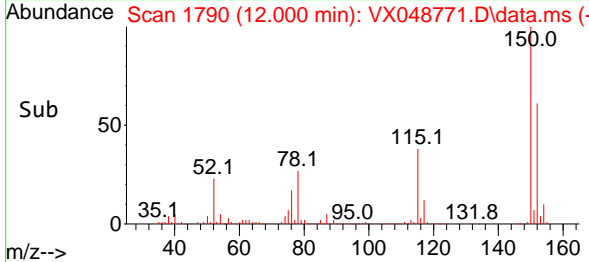


#72  
 1,4-Dichlorobenzene-d4  
 Concen: 50.000 ug/l  
 RT: 12.000 min Scan# 11  
 Delta R.T. -0.006 min  
 Lab File: VX048771.D  
 Acq: 09 Dec 2025 10:36

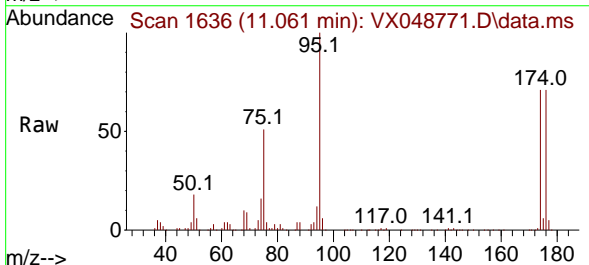
Instrument :  
 MSVOA\_X  
 ClientSampleId :  
 CHASE-A



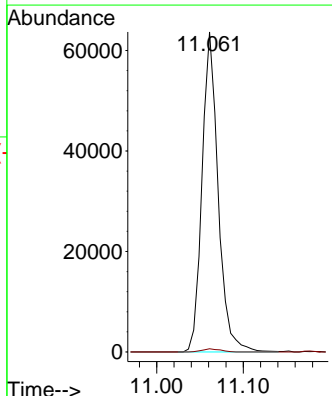
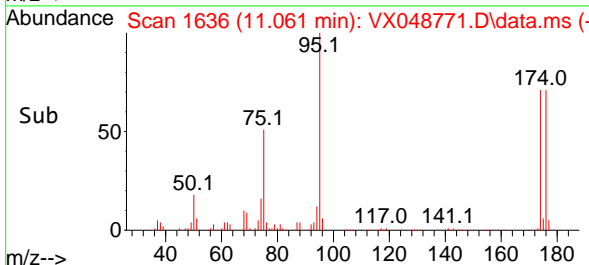
Tgt Ion:152 Resp: 181526  
 Ion Ratio Lower Upper  
 152 100  
 115 60.3 42.1 126.4  
 150 159.8 0.0 347.8

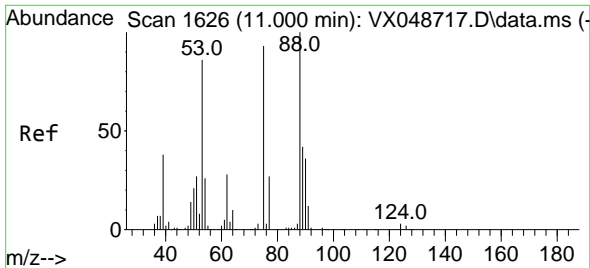


#76  
 1,2,3-Trichloropropane  
 Concen: 24.363 ug/l  
 RT: 11.061 min Scan# 1636  
 Delta R.T. -0.158 min  
 Lab File: VX048771.D  
 Acq: 09 Dec 2025 10:36



Tgt Ion: 75 Resp: 82371  
 Ion Ratio Lower Upper  
 75 100  
 77 1.1 24.3 73.0#

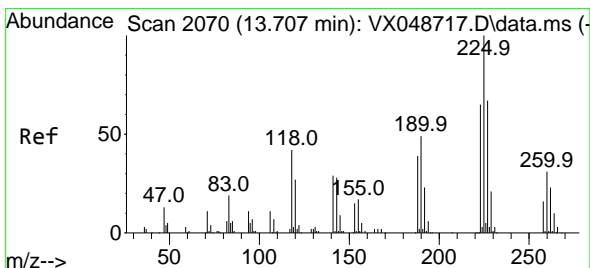
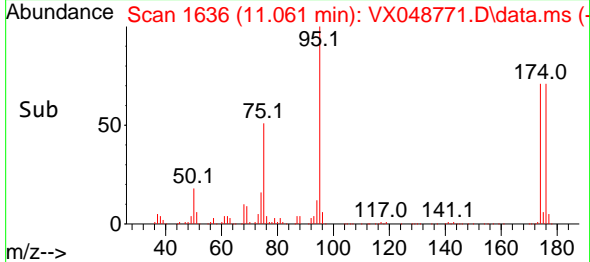
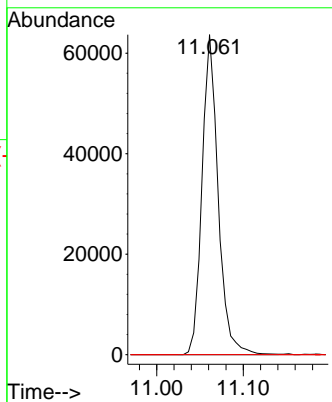
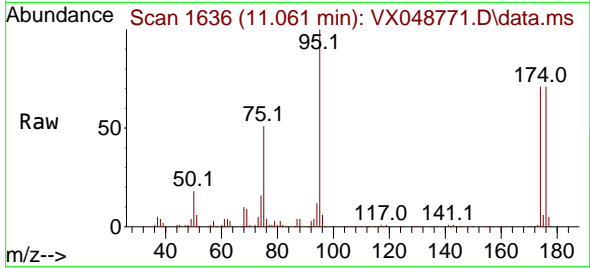




#81  
 trans-1,4-Dichloro-2-butene  
 Concen: 57.872 ug/l  
 RT: 11.061 min Scan# 1069  
 Delta R.T. 0.061 min  
 Lab File: VX048771.D  
 Acq: 09 Dec 2025 10:36

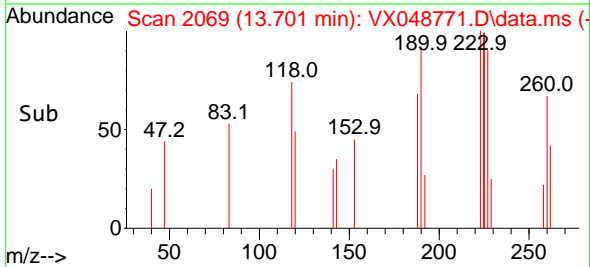
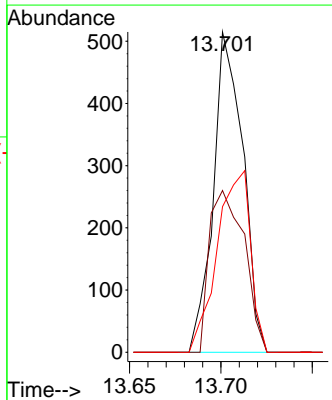
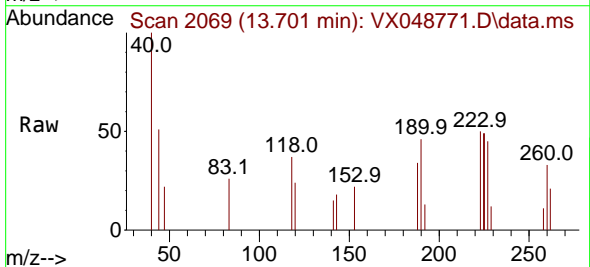
Instrument :  
 MSVOA\_X  
 ClientSampleId :  
 CHASE-A

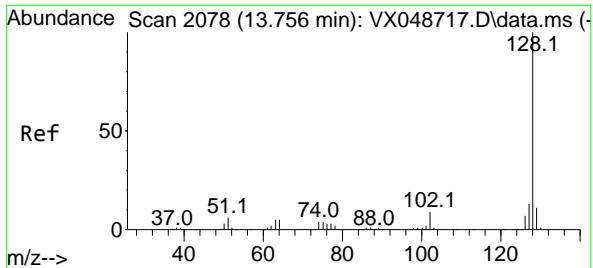
Tgt Ion: 75 Resp: 82371  
 Ion Ratio Lower Upper  
 75 100  
 53 0.0 79.9 119.9#  
 89 0.0 67.1 100.7#



#94  
 Hexachlorobutadiene  
 Concen: 0.364 ug/l  
 RT: 13.701 min Scan# 2069  
 Delta R.T. -0.006 min  
 Lab File: VX048771.D  
 Acq: 09 Dec 2025 10:36

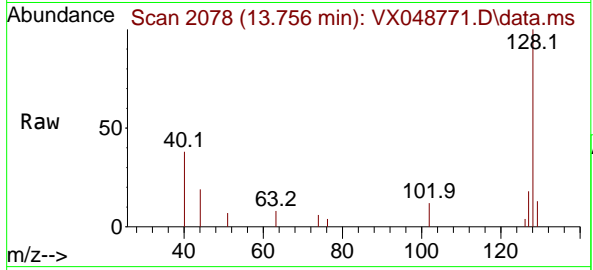
Tgt Ion: 225 Resp: 580  
 Ion Ratio Lower Upper  
 225 100  
 223 59.5 33.0 98.9  
 227 63.8 32.9 98.7





#95  
 Naphthalene  
 Concen: Below Cal  
 RT: 13.756 min Scan# 20  
 Delta R.T. 0.000 min  
 Lab File: VX048771.D  
 Acq: 09 Dec 2025 10:36

Instrument :  
 MSVOA\_X  
 ClientSampleId :  
 CHASE-A



Tgt Ion:128 Resp: 2173

Ion	Ratio	Lower	Upper
128	100		
127	13.0	10.2	15.2
129	10.5	8.6	13.0

