

Data Path : Z:\voasrv\HPCHEM1\MSVOA_X\Data\VX120925\
 Data File : VX048774.D
 Acq On : 09 Dec 2025 11:45
 Operator : JC/MD
 Sample : Q3788-01
 Misc : 5.0mL/MSVOA_X/WATER
 ALS Vial : 8 Sample Multiplier: 1

Instrument :
 MSVOA_X
 ClientSampleId :

Quant Time: Dec 10 00:16:56 2025
 Quant Method : Z:\voasrv\HPCHEM1\MSVOA_X\Method\82X120425W.M
 Quant Title : SW846 8260
 QLast Update : Fri Dec 05 03:27:34 2025
 Response via : Initial Calibration

Compound	R.T.	QIon	Response	Conc	Units	Dev(Min)
Internal Standards						
1) Pentafluorobenzene	5.538	168	135193	50.000	ug/l	0.00
34) 1,4-Difluorobenzene	6.745	114	279762	50.000	ug/l	0.00
63) Chlorobenzene-d5	10.037	117	295744	50.000	ug/l	0.00
72) 1,4-Dichlorobenzene-d4	12.006	152	153431	50.000	ug/l	0.00
System Monitoring Compounds						
33) 1,2-Dichloroethane-d4	5.940	65	94731	52.207	ug/l	0.00
Spiked Amount	50.000	Range 78 - 117	Recovery	=	104.420%	
35) Dibromofluoromethane	5.373	113	84981	44.117	ug/l	0.00
Spiked Amount	50.000	Range 75 - 124	Recovery	=	88.240%	
50) Toluene-d8	8.635	98	304625	45.115	ug/l	0.00
Spiked Amount	50.000	Range 92 - 112	Recovery	=	90.240%#	
62) 4-Bromofluorobenzene	11.061	95	131405	56.437	ug/l	0.00
Spiked Amount	50.000	Range 83 - 123	Recovery	=	112.880%	
Target Compounds						
						Qvalue
3) Chloromethane	1.301	50	2432	1.399	ug/l	99
4) Vinyl Chloride	1.386	62	1702	0.919	ug/l	95
5) Bromomethane	1.630	94	486	0.425	ug/l #	47
6) Chloroethane	1.703	64	263	0.228	ug/l #	26
9) 1,1,2-Trichlorotrifluo...	2.331	101	520	0.338	ug/l #	25
10) Methyl Iodide	2.471	142	1423	0.650	ug/l	97
11) Tert butyl alcohol	2.928	59	324	1.106	ug/l #	73
12) 1,1-Dichloroethene	2.325	96	187750	119.596	ug/l	99
13) Acrolein	2.252	56	302	41.073	ug/l	98
15) Acrylonitrile	3.081	53	388	0.425	ug/l	94
16) Acetone	2.374	43	8653	12.457	ug/l	98
17) Carbon Disulfide	2.520	76	19382	4.251	ug/l	99
18) Methyl Acetate	2.697	43	603	0.309	ug/l #	63
21) trans-1,2-Dichloroethene	3.093	96	18284	11.411	ug/l	98
24) 1,1-Dichloroethane	3.605	63	25666	9.344	ug/l	99
25) 2-Butanone	4.526	43	699	0.682	ug/l #	51
26) 2,2-Dichloropropane	4.526	77	1367	0.562	ug/l #	52
27) cis-1,2-Dichloroethene	4.477	96	167466	92.623	ug/l	94
29) Tetrahydrofuran	5.020	42	1065	1.360	ug/l #	64
36) 1,1-Dichloropropene	5.532	75	10867	4.119	ug/l #	45
38) Carbon Tetrachloride	5.532	117	14227	4.761	ug/l #	15
40) Benzene	6.038	78	2464	0.315	ug/l	99
42) 1,2-Dichloroethane	6.074	62	14210	5.133	ug/l	99
44) Trichloroethene	7.111	130	45972	22.527	ug/l	98
49) 1,4-Dioxane	7.647	88	3026	91.627	ug/l #	90
51) 4-Methyl-2-Pentanone	8.562	43	1005	0.339	ug/l	99
52) Toluene	8.702	92	2616	0.555	ug/l	87
59) 2-Hexanone	9.433	43	785	0.377	ug/l	74
68) m/p-Xylenes	10.293	106	865	0.210	ug/l	82
76) 1,2,3-Trichloropropane	11.061	75	65872	23.051	ug/l #	30
81) trans-1,4-Dichloro-2-b...	11.061	75	65872	54.755	ug/l #	3
85) sec-Butylbenzene	11.872	105	2152	0.201	ug/l	94
86) p-Isopropyltoluene	11.994	119	2007	0.219	ug/l #	66
89) n-Butylbenzene	12.317	91	2609	0.305	ug/l	99
90) Hexachloroethane	12.518	117	398	0.213	ug/l	92
91) 1,2-Dichlorobenzene	12.323	146	1021	0.207	ug/l	89

Data Path : Z:\voasrv\HPCHEM1\MSVOA_X\Data\VX120925\
Data File : VX048774.D
Acq On : 09 Dec 2025 11:45
Operator : JC/MD
Sample : Q3788-01
Misc : 5.0mL/MSVOA_X/WATER
ALS Vial : 8 Sample Multiplier: 1

Instrument :
MSVOA_X
ClientSampleId :

Quant Time: Dec 10 00:16:56 2025
Quant Method : Z:\voasrv\HPCHEM1\MSVOA_X\Method\82X120425W.M
Quant Title : SW846 8260
QLast Update : Fri Dec 05 03:27:34 2025
Response via : Initial Calibration

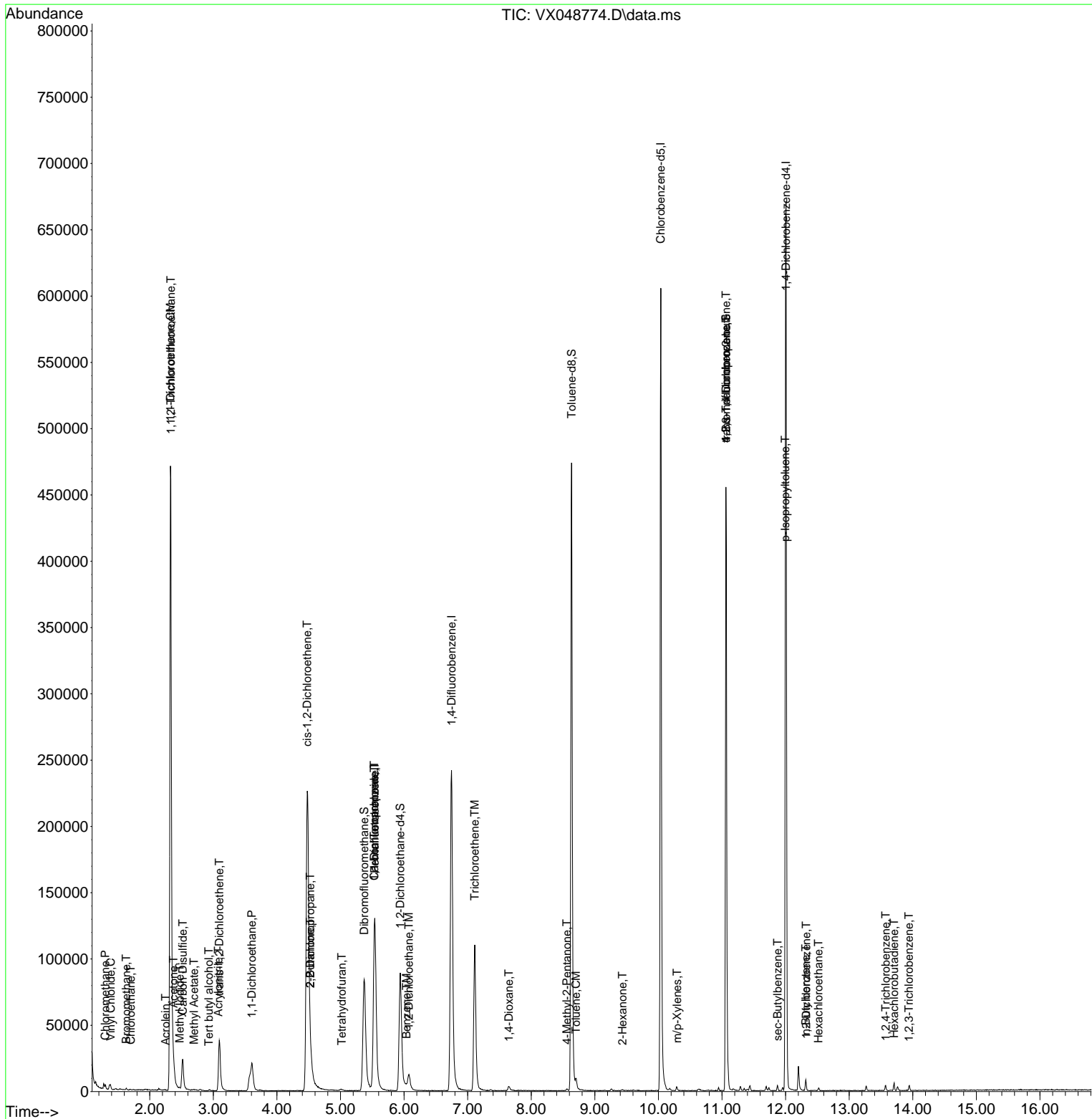
Compound	R.T.	QIon	Response	Conc	Units	Dev(Min)
93) 1,2,4-Trichlorobenzene	13.573	180	1332	0.409	ug/l	96
94) Hexachlorobutadiene	13.707	225	915	0.679	ug/l	97
95) Naphthalene	13.756	128	2377	Below Cal	#	94
96) 1,2,3-Trichlorobenzene	13.939	180	1227	0.408	ug/l	97

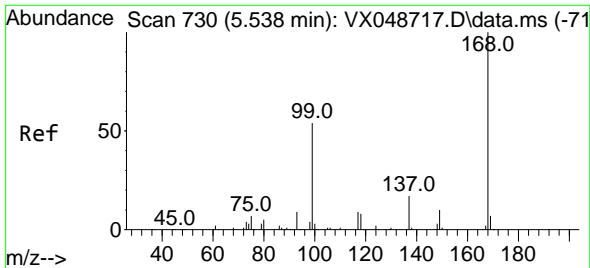
(#) = qualifier out of range (m) = manual integration (+) = signals summed

Data Path : Z:\voasrv\HPCHEM1\MSVOA_X\Data\VX120925\
 Data File : VX048774.D
 Acq On : 09 Dec 2025 11:45
 Operator : JC/MD
 Sample : Q3788-01
 Misc : 5.0mL/MSVOA_X/WATER
 ALS Vial : 8 Sample Multiplier: 1

Instrument :
 MSVOA_X
 ClientSampleId :

Quant Time: Dec 10 00:16:56 2025
 Quant Method : Z:\voasrv\HPCHEM1\MSVOA_X\Method\82X120425W.M
 Quant Title : SW846 8260
 QLast Update : Fri Dec 05 03:27:34 2025
 Response via : Initial Calibration

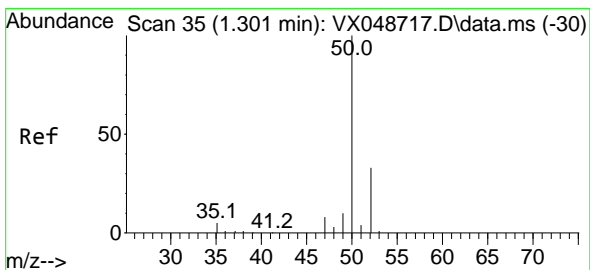
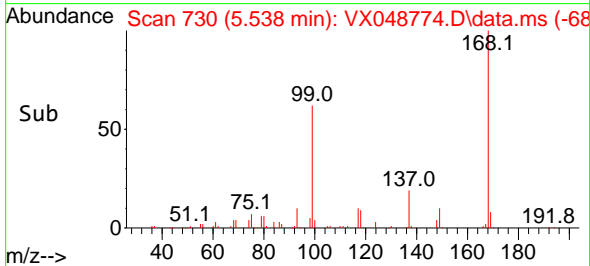
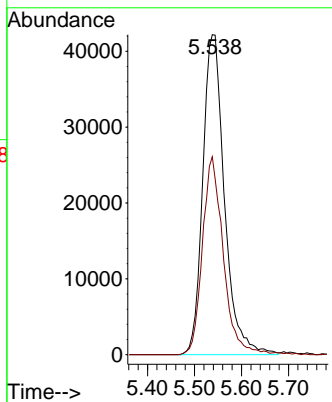
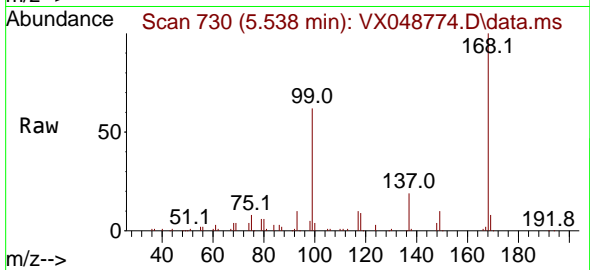




#1
 Pentafluorobenzene
 Concen: 50.000 ug/l
 RT: 5.538 min Scan# 71
 Delta R.T. -0.000 min
 Lab File: VX048774.D
 Acq: 09 Dec 2025 11:45

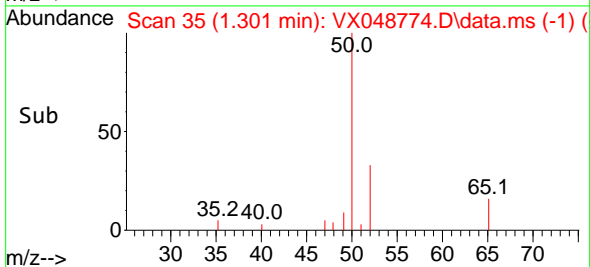
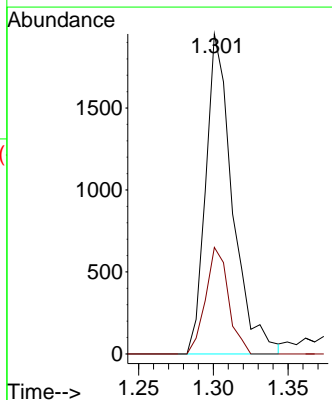
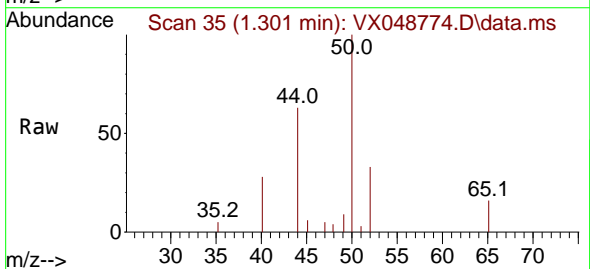
Instrument :
 MSVOA_X
 ClientSampleId :

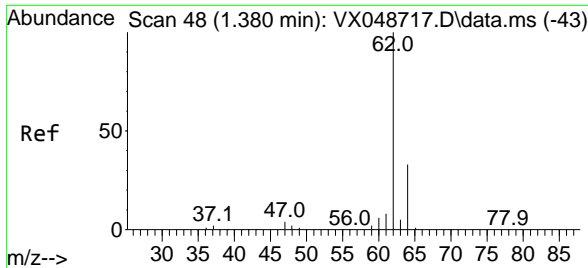
Tgt Ion:168 Resp: 135193
 Ion Ratio Lower Upper
 168 100
 99 61.8 44.2 66.4



#3
 Chloromethane
 Concen: 1.399 ug/l
 RT: 1.301 min Scan# 35
 Delta R.T. 0.000 min
 Lab File: VX048774.D
 Acq: 09 Dec 2025 11:45

Tgt Ion: 50 Resp: 2432
 Ion Ratio Lower Upper
 50 100
 52 33.3 26.4 39.6

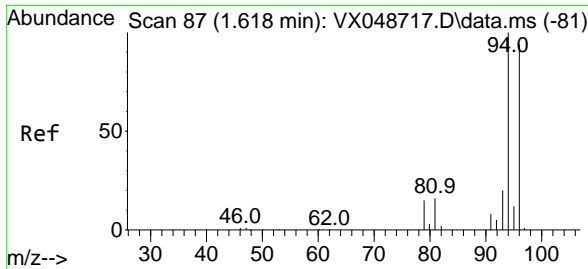
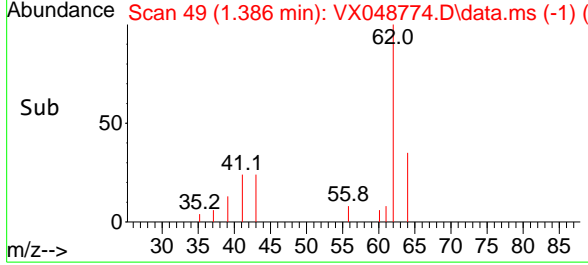
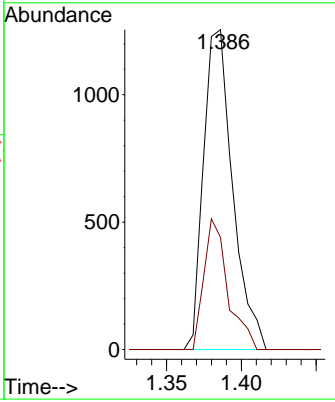
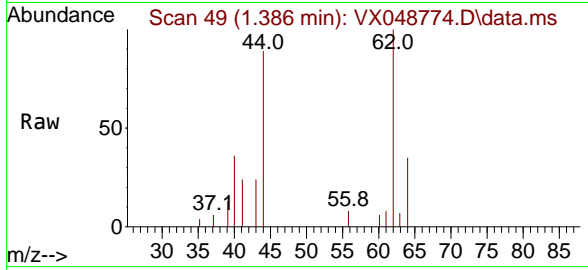




#4
 Vinyl Chloride
 Concen: 0.919 ug/l
 RT: 1.386 min Scan# 49
 Delta R.T. 0.006 min
 Lab File: VX048774.D
 Acq: 09 Dec 2025 11:45

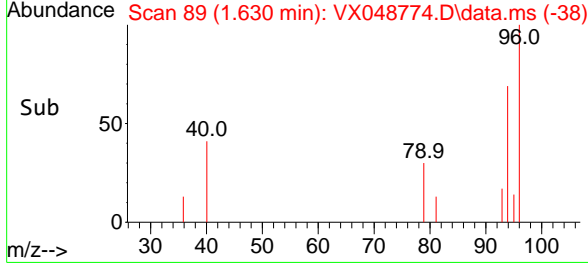
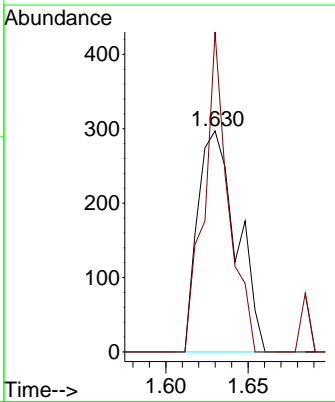
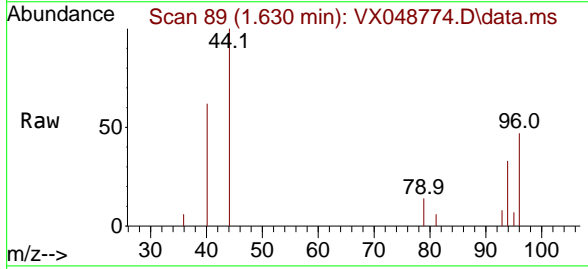
Instrument : MSVOA_X
 ClientSampleId :

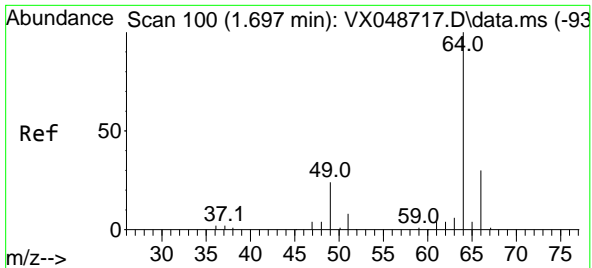
Tgt Ion: 62 Resp: 1702
 Ion Ratio Lower Upper
 62 100
 64 35.1 26.0 39.0



#5
 Bromomethane
 Concen: 0.425 ug/l
 RT: 1.630 min Scan# 89
 Delta R.T. 0.012 min
 Lab File: VX048774.D
 Acq: 09 Dec 2025 11:45

Tgt Ion: 94 Resp: 486
 Ion Ratio Lower Upper
 94 100
 96 144.8 75.2 112.8#

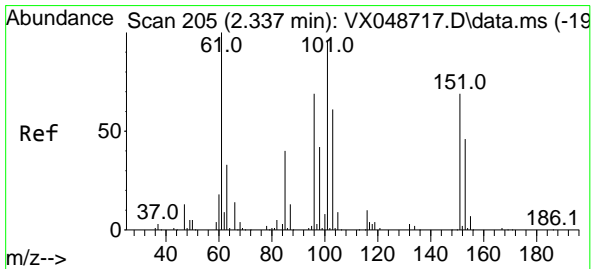
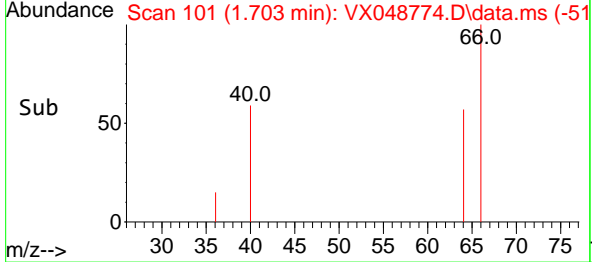
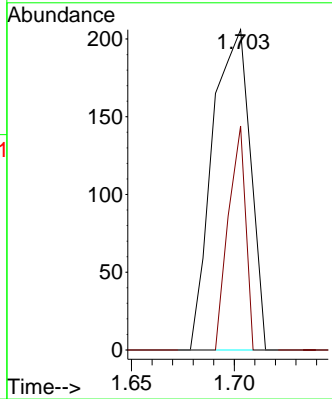
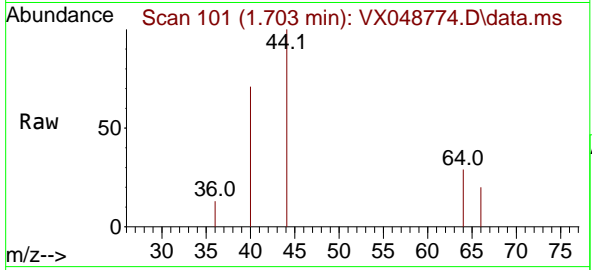




#6
 Chloroethane
 Concen: 0.228 ug/l
 RT: 1.703 min Scan# 10
 Delta R.T. 0.006 min
 Lab File: VX048774.D
 Acq: 09 Dec 2025 11:45

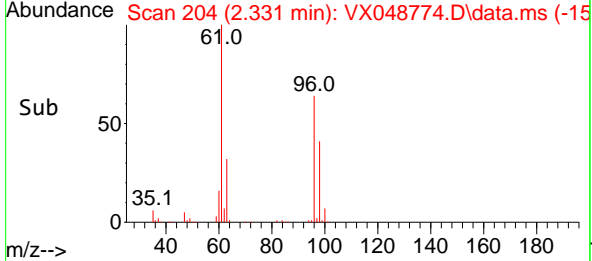
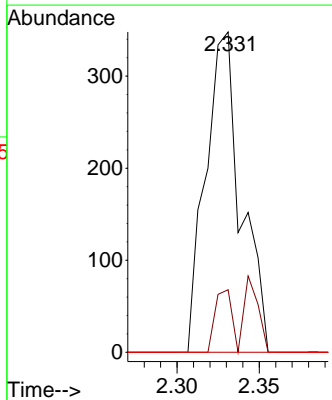
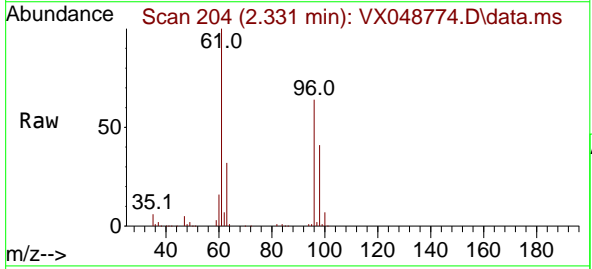
Instrument : MSVOA_X
 ClientSampleId :

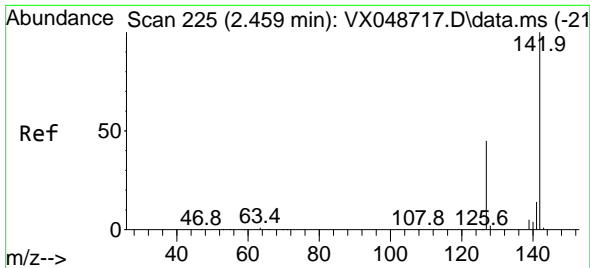
Tgt Ion: 64 Resp: 263
 Ion Ratio Lower Upper
 64 100
 66 69.9 24.0 36.0#



#9
 1,1,2-Trichlorotrifluoroethane
 Concen: 0.338 ug/l
 RT: 2.331 min Scan# 204
 Delta R.T. -0.006 min
 Lab File: VX048774.D
 Acq: 09 Dec 2025 11:45

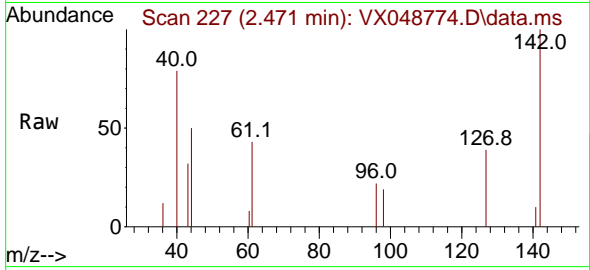
Tgt Ion:101 Resp: 520
 Ion Ratio Lower Upper
 101 100
 85 9.2 34.2 51.2#
 151 0.0 60.2 90.4#



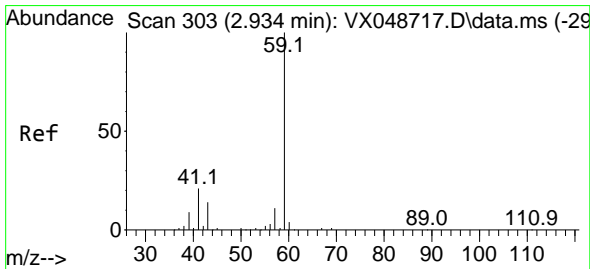
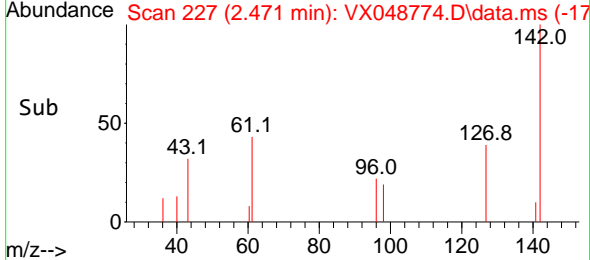
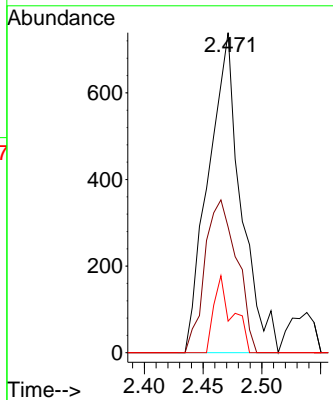


#10
Methyl Iodide
Concen: 0.650 ug/l
RT: 2.471 min Scan# 21
Delta R.T. 0.012 min
Lab File: VX048774.D
Acq: 09 Dec 2025 11:45

Instrument : MSVOA_X
ClientSampleId :

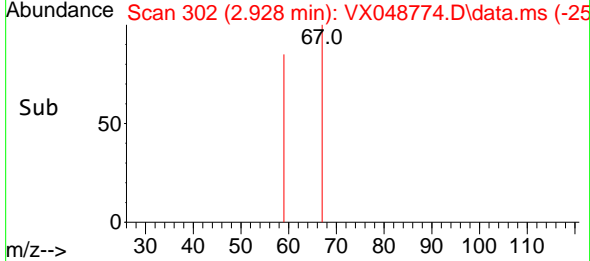
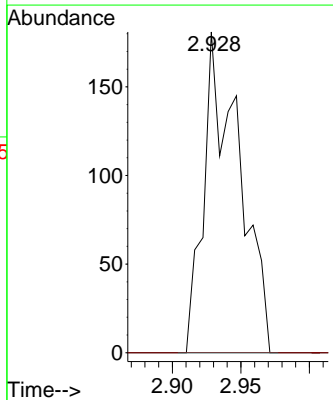
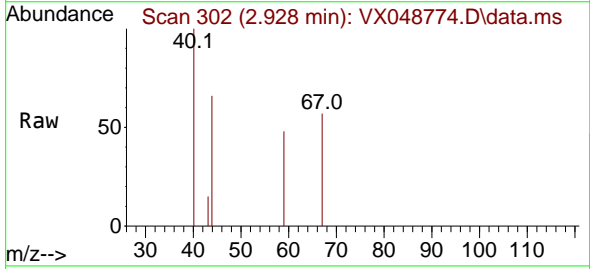


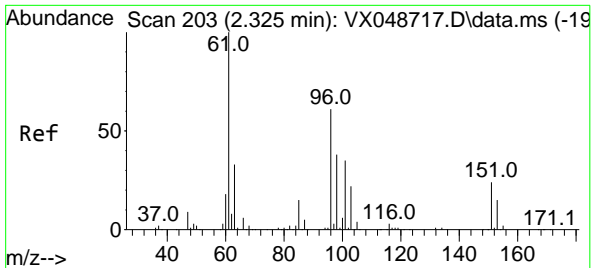
Tgt Ion:142 Resp: 1423
Ion Ratio Lower Upper
142 100
127 47.2 35.8 53.6
141 13.8 11.1 16.7



#11
Tert butyl alcohol
Concen: 1.106 ug/l
RT: 2.928 min Scan# 302
Delta R.T. -0.006 min
Lab File: VX048774.D
Acq: 09 Dec 2025 11:45

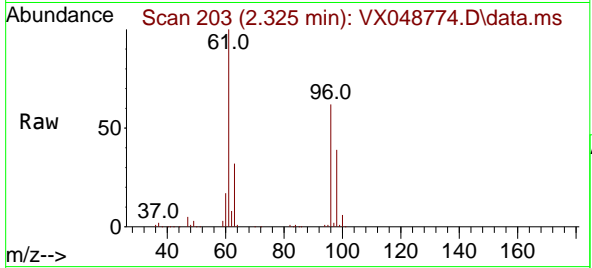
Tgt Ion: 59 Resp: 324
Ion Ratio Lower Upper
59 100
57 0.0 8.1 12.1#



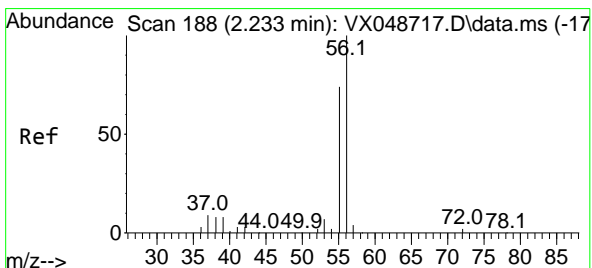
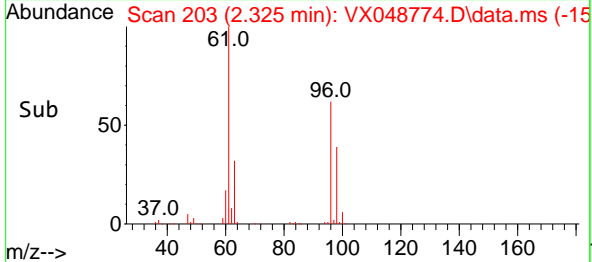
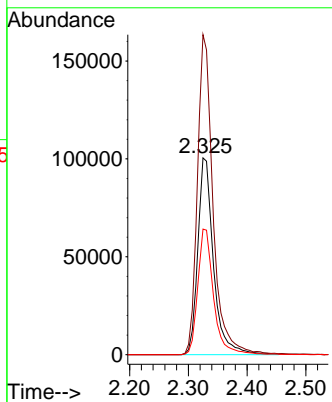


#12
 1,1-Dichloroethene
 Concen: 119.596 ug/l
 RT: 2.325 min Scan# 203
 Delta R.T. 0.000 min
 Lab File: VX048774.D
 Acq: 09 Dec 2025 11:45

Instrument : MSVOA_X
 ClientSampleId :

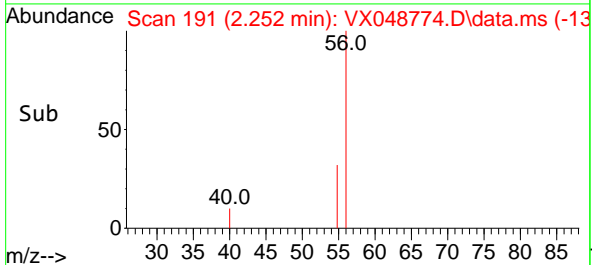
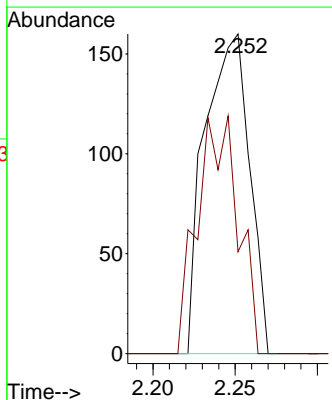
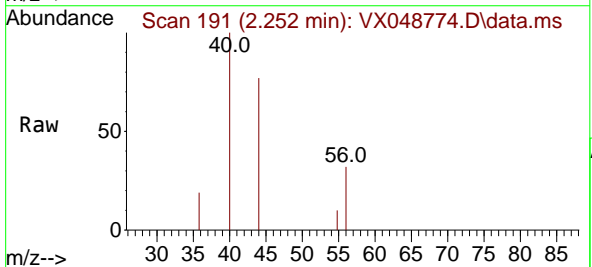


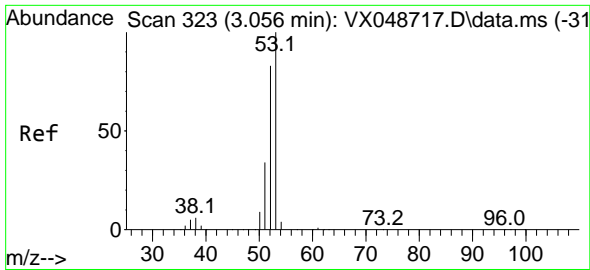
Tgt Ion: 96 Resp: 187750
 Ion Ratio Lower Upper
 96 100
 61 162.5 130.7 196.1
 98 63.8 49.8 74.8



#13
 Acrolein
 Concen: 41.073 ug/l
 RT: 2.252 min Scan# 191
 Delta R.T. 0.018 min
 Lab File: VX048774.D
 Acq: 09 Dec 2025 11:45

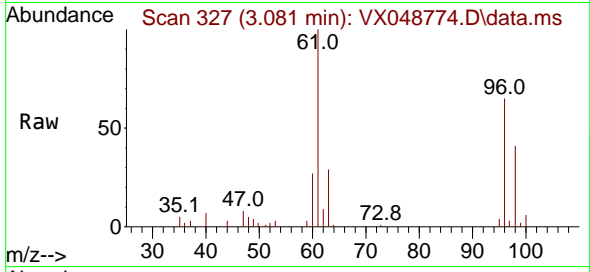
Tgt Ion: 56 Resp: 302
 Ion Ratio Lower Upper
 56 100
 55 67.9 55.8 83.6



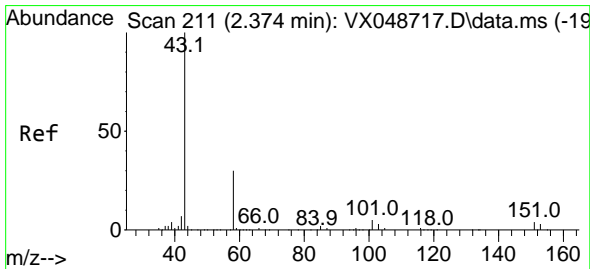
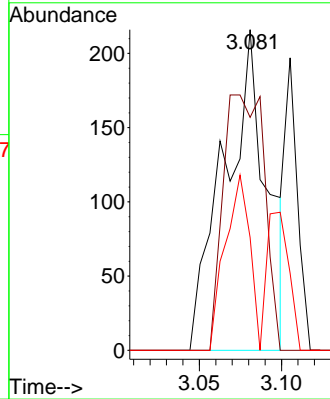
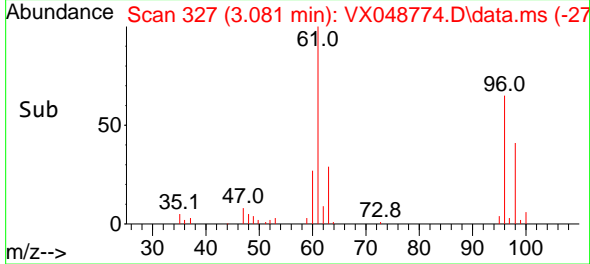


#15
 Acrylonitrile
 Concen: 0.425 ug/l
 RT: 3.081 min Scan# 31
 Delta R.T. 0.024 min
 Lab File: VX048774.D
 Acq: 09 Dec 2025 11:45

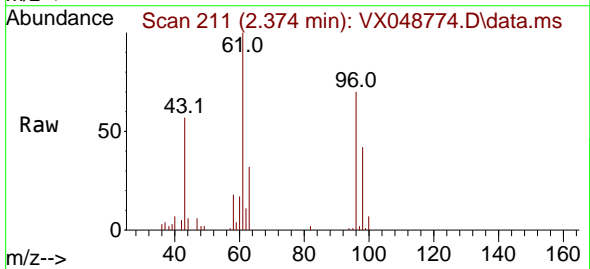
Instrument :
 MSVOA_X
 ClientSampleId :



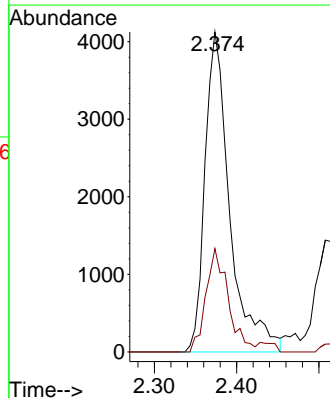
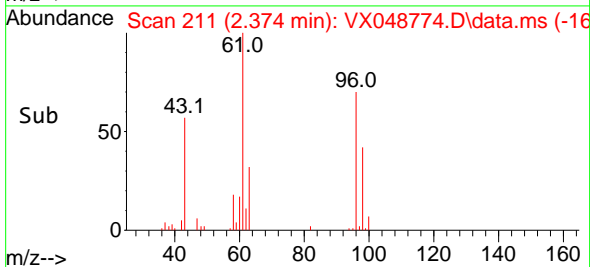
Tgt Ion: 53 Resp: 388
 Ion Ratio Lower Upper
 53 100
 52 77.3 66.3 99.5
 51 31.7 28.7 43.1

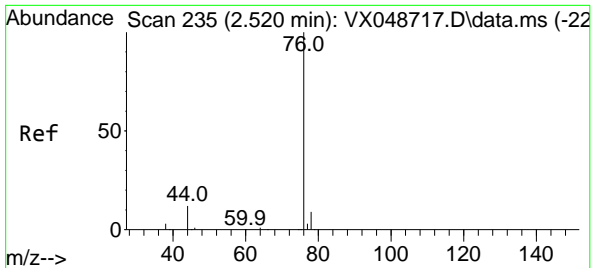


#16
 Acetone
 Concen: 12.457 ug/l
 RT: 2.374 min Scan# 211
 Delta R.T. 0.000 min
 Lab File: VX048774.D
 Acq: 09 Dec 2025 11:45



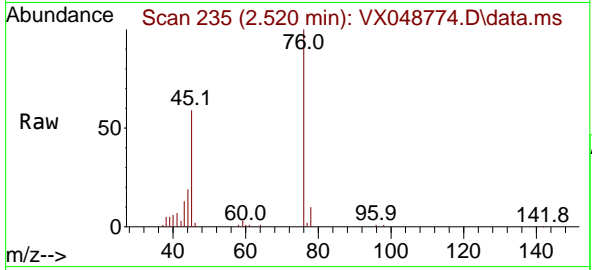
Tgt Ion: 43 Resp: 8653
 Ion Ratio Lower Upper
 43 100
 58 32.3 25.0 37.4



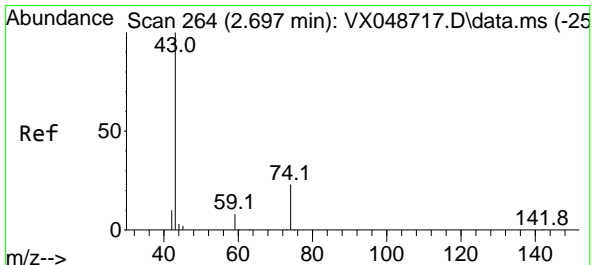
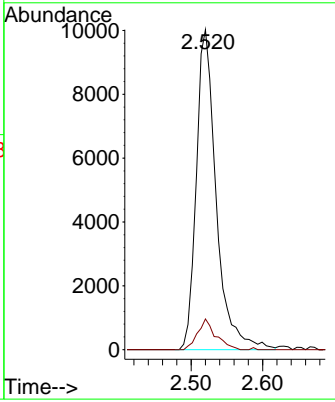
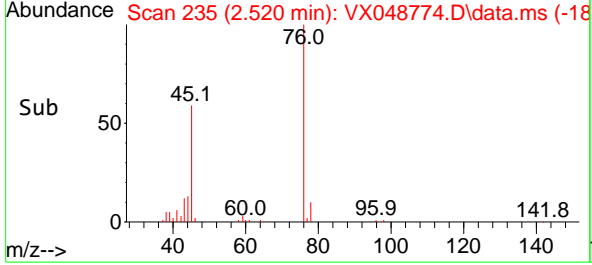


#17
 Carbon Disulfide
 Concen: 4.251 ug/l
 RT: 2.520 min Scan# 21
 Delta R.T. 0.000 min
 Lab File: VX048774.D
 Acq: 09 Dec 2025 11:45

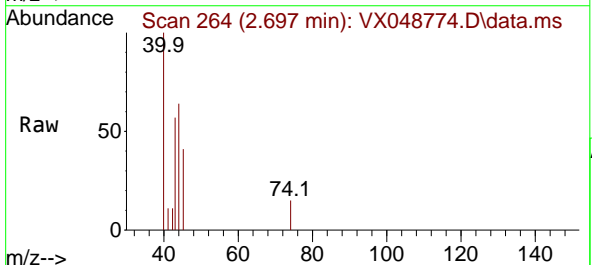
Instrument : MSVOA_X
 ClientSampleId :



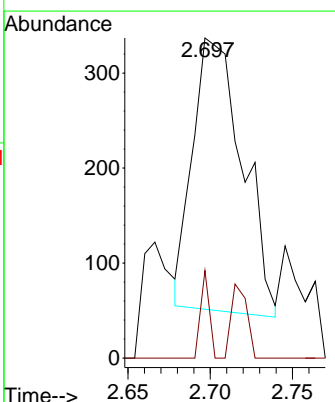
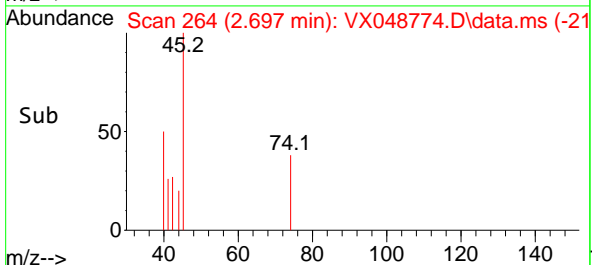
Tgt Ion: 76 Resp: 19382
 Ion Ratio Lower Upper
 76 100
 78 9.6 7.4 11.2

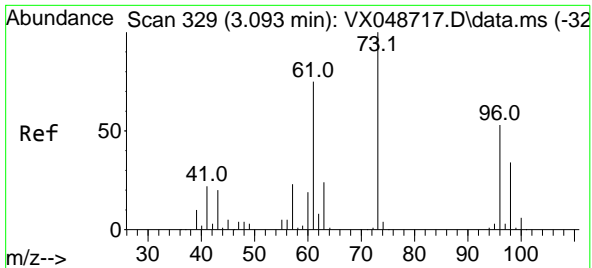


#18
 Methyl Acetate
 Concen: 0.309 ug/l
 RT: 2.697 min Scan# 264
 Delta R.T. 0.000 min
 Lab File: VX048774.D
 Acq: 09 Dec 2025 11:45



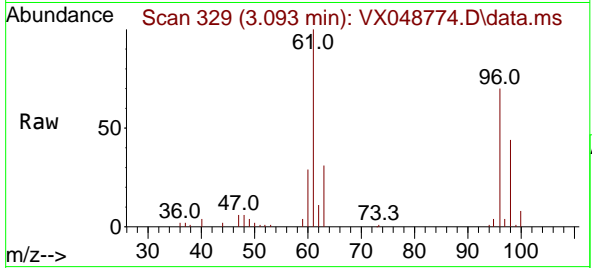
Tgt Ion: 43 Resp: 603
 Ion Ratio Lower Upper
 43 100
 74 5.6 19.2 28.8#





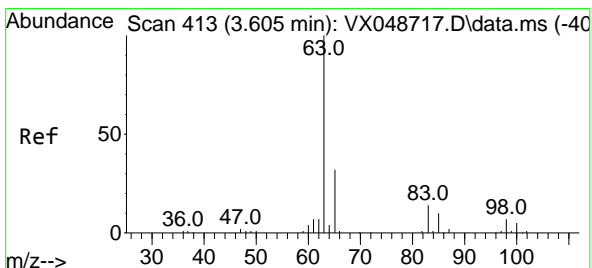
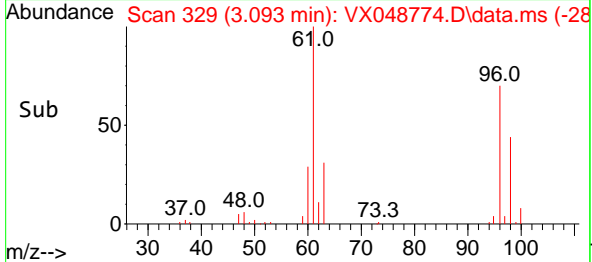
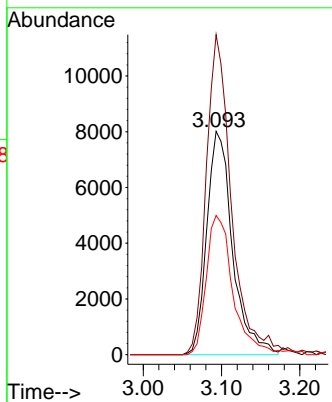
#21
 trans-1,2-Dichloroethene
 Concen: 11.411 ug/l
 RT: 3.093 min Scan# 311
 Delta R.T. 0.000 min
 Lab File: VX048774.D
 Acq: 09 Dec 2025 11:45

Instrument : MSVOA_X
 ClientSampleId :

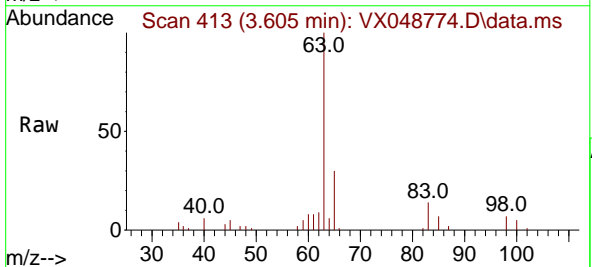


Tgt Ion: 96 Resp: 18284

Ion	Ratio	Lower	Upper
96	100		
61	143.3	112.8	169.2
98	62.4	51.0	76.4

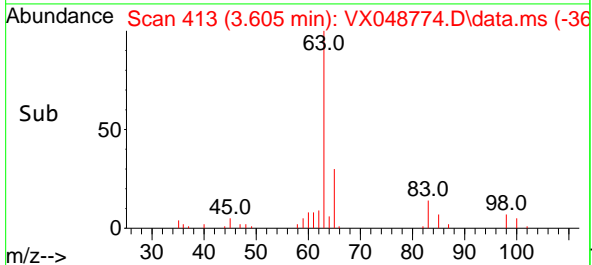
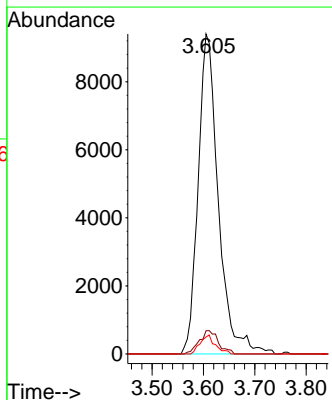


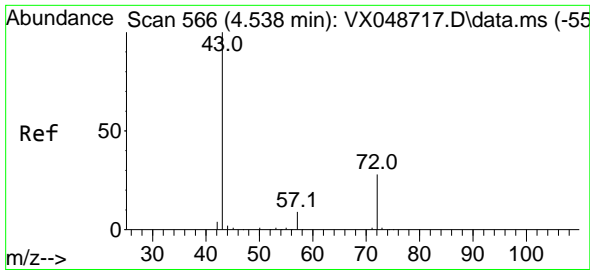
#24
 1,1-Dichloroethane
 Concen: 9.344 ug/l
 RT: 3.605 min Scan# 413
 Delta R.T. 0.000 min
 Lab File: VX048774.D
 Acq: 09 Dec 2025 11:45



Tgt Ion: 63 Resp: 25666

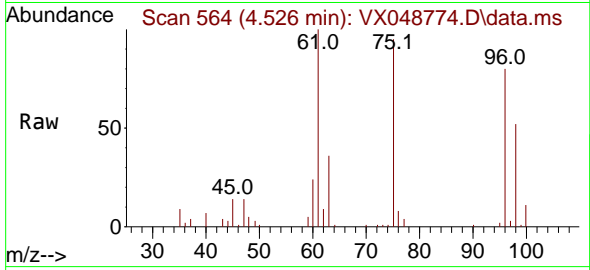
Ion	Ratio	Lower	Upper
63	100		
98	7.2	3.5	10.6
100	5.3	2.5	7.4



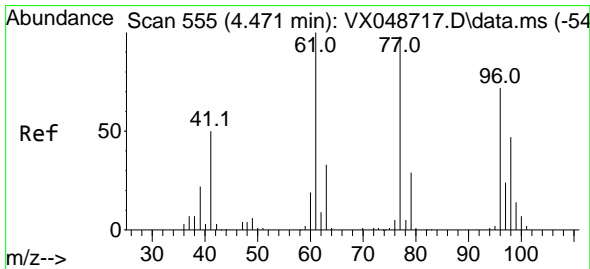
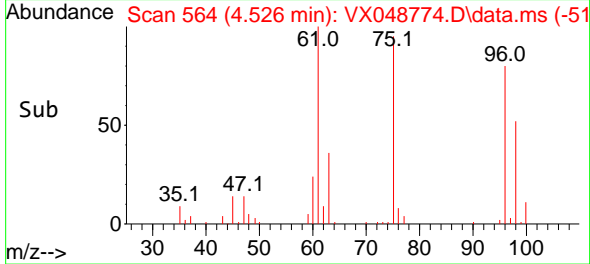
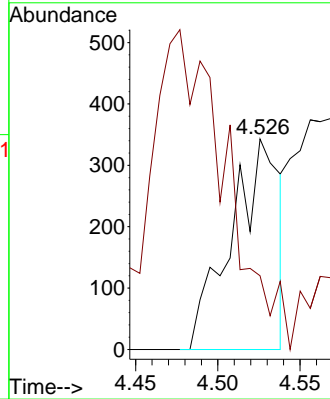


#25
 2-Butanone
 Concen: 0.682 ug/l
 RT: 4.526 min Scan# 564
 Delta R.T. -0.012 min
 Lab File: VX048774.D
 Acq: 09 Dec 2025 11:45

Instrument : MSVOA_X
 ClientSampleId :

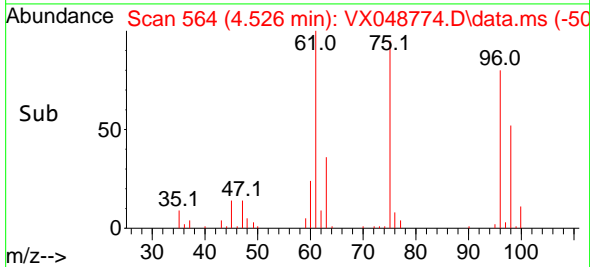
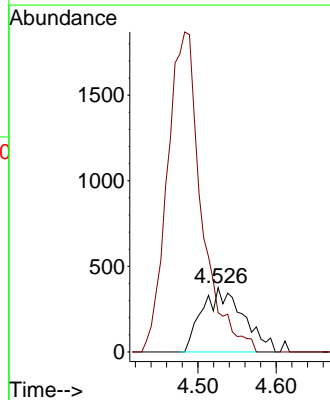
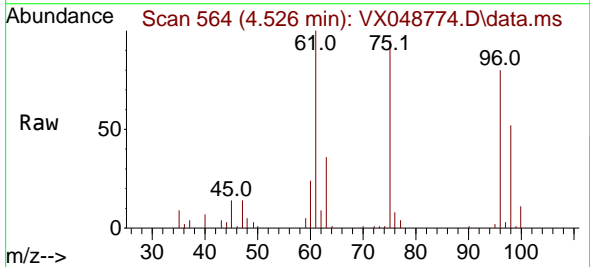


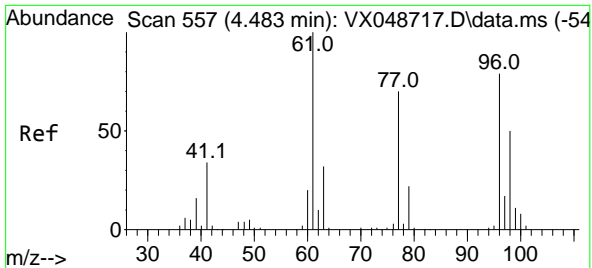
Tgt Ion: 43 Resp: 699
 Ion Ratio Lower Upper
 43 100
 72 2.6 22.6 34.0#



#26
 2,2-Dichloropropane
 Concen: 0.562 ug/l
 RT: 4.526 min Scan# 564
 Delta R.T. 0.055 min
 Lab File: VX048774.D
 Acq: 09 Dec 2025 11:45

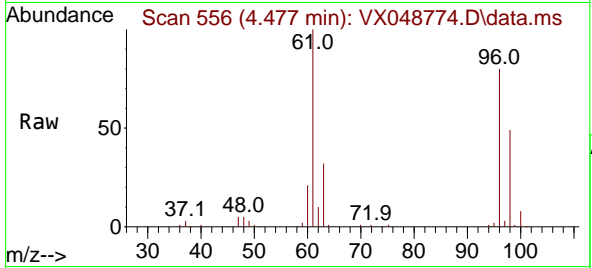
Tgt Ion: 77 Resp: 1367
 Ion Ratio Lower Upper
 77 100
 97 0.0 11.6 34.8#



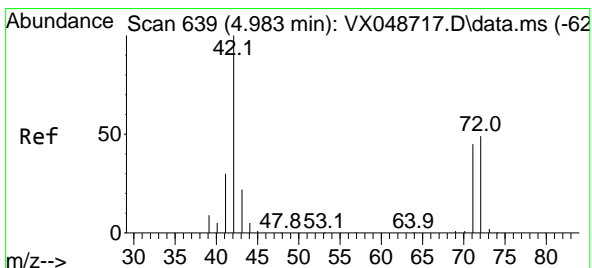
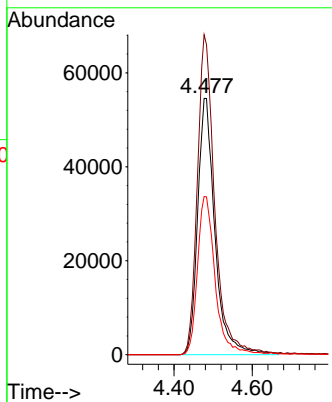
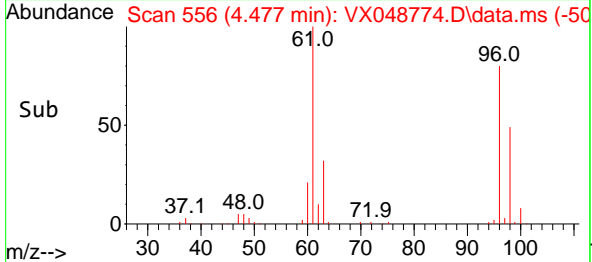


#27
 cis-1,2-Dichloroethene
 Concen: 92.623 ug/l
 RT: 4.477 min Scan# 51
 Delta R.T. -0.006 min
 Lab File: VX048774.D
 Acq: 09 Dec 2025 11:45

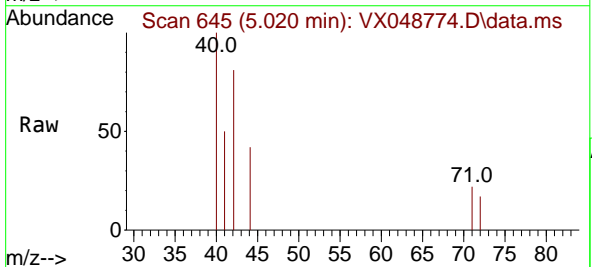
Instrument :
 MSVOA_X
 ClientSampleId :



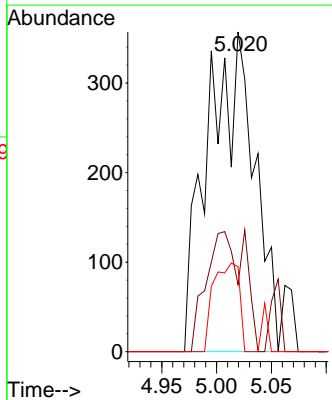
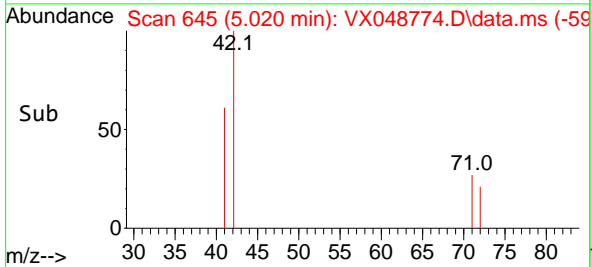
Tgt Ion: 96 Resp: 167466
 Ion Ratio Lower Upper
 96 100
 61 125.7 0.0 271.0
 98 63.1 0.0 130.2

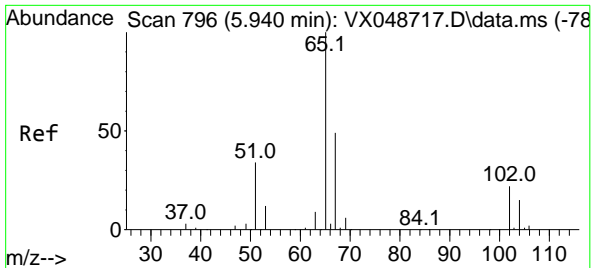


#29
 Tetrahydrofuran
 Concen: 1.360 ug/l
 RT: 5.020 min Scan# 645
 Delta R.T. 0.037 min
 Lab File: VX048774.D
 Acq: 09 Dec 2025 11:45



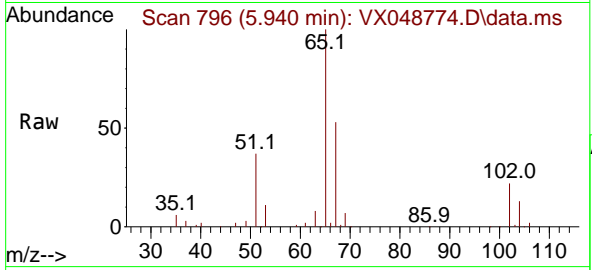
Tgt Ion: 42 Resp: 1065
 Ion Ratio Lower Upper
 42 100
 72 30.1 39.4 59.2#
 71 15.2 35.8 53.6#



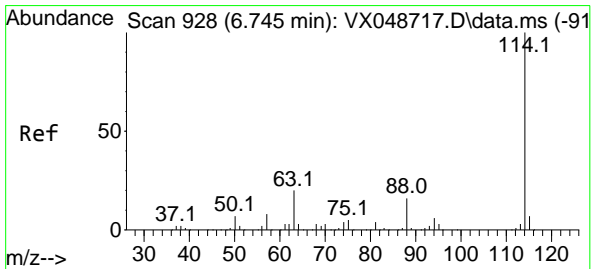
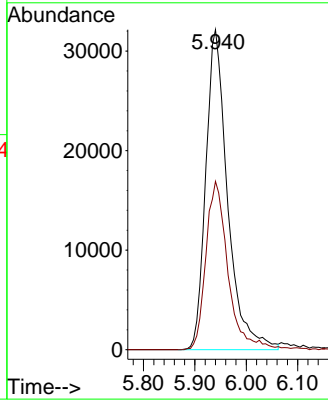
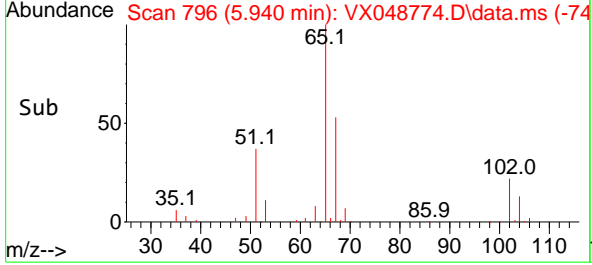


#33
 1,2-Dichloroethane-d4
 Concen: 52.207 ug/l
 RT: 5.940 min Scan# 796
 Delta R.T. 0.000 min
 Lab File: VX048774.D
 Acq: 09 Dec 2025 11:45

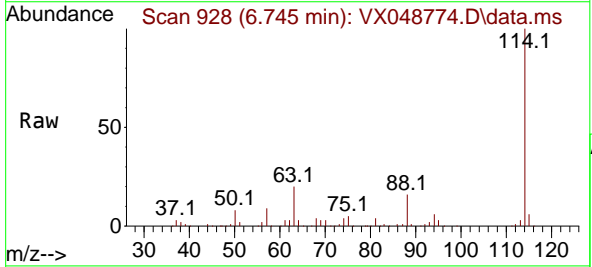
Instrument : MSVOA_X
 ClientSampleId :



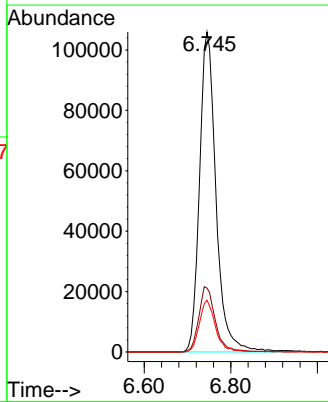
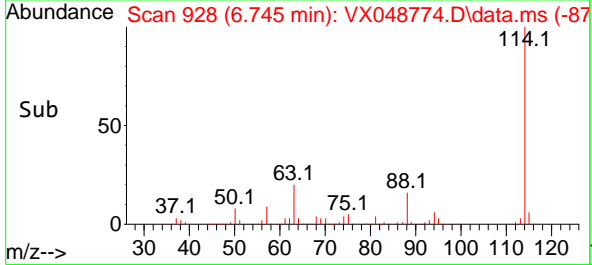
Tgt Ion: 65 Resp: 94731
 Ion Ratio Lower Upper
 65 100
 67 53.3 0.0 107.4

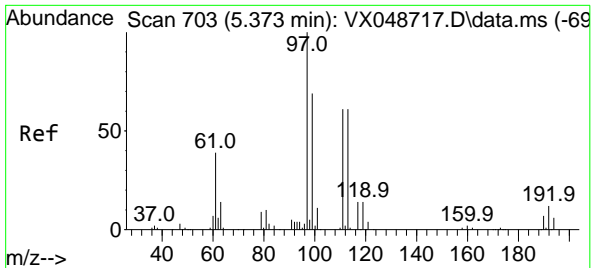


#34
 1,4-Difluorobenzene
 Concen: 50.000 ug/l
 RT: 6.745 min Scan# 928
 Delta R.T. 0.000 min
 Lab File: VX048774.D
 Acq: 09 Dec 2025 11:45



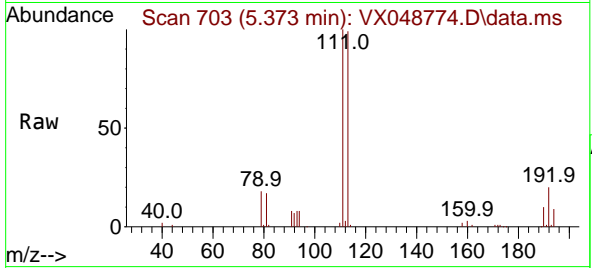
Tgt Ion: 114 Resp: 279762
 Ion Ratio Lower Upper
 114 100
 63 19.9 0.0 39.0
 88 16.2 0.0 31.8



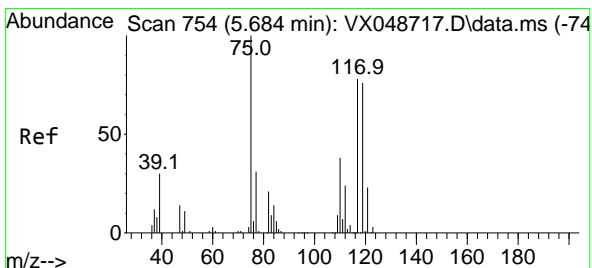
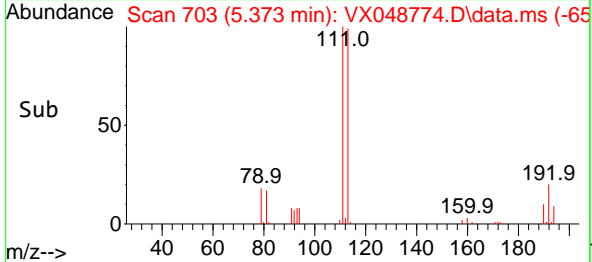
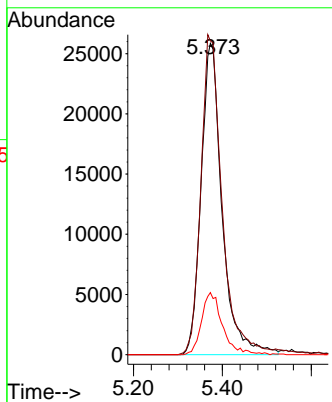


#35
 Dibromofluoromethane
 Concen: 44.117 ug/l
 RT: 5.373 min Scan# 703
 Delta R.T. 0.000 min
 Lab File: VX048774.D
 Acq: 09 Dec 2025 11:45

Instrument : MSVOA_X
 ClientSampleId :

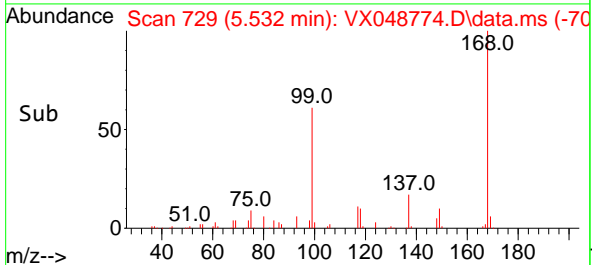
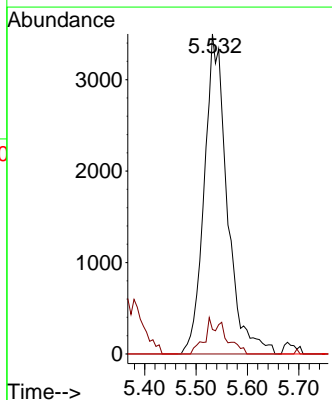
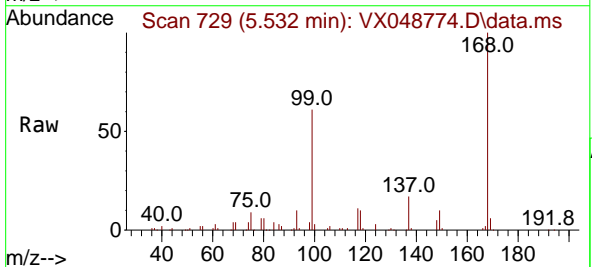


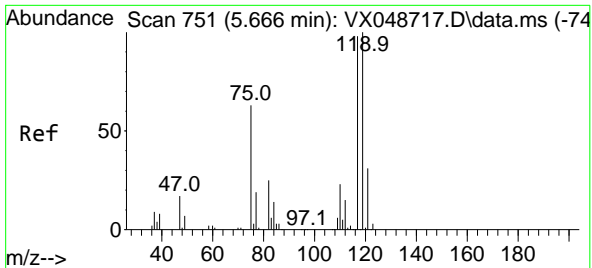
Tgt Ion: 113 Resp: 84981
 Ion Ratio Lower Upper
 113 100
 111 103.2 79.5 119.3
 192 20.0 16.1 24.1



#36
 1,1-Dichloropropene
 Concen: 4.119 ug/l
 RT: 5.532 min Scan# 729
 Delta R.T. -0.152 min
 Lab File: VX048774.D
 Acq: 09 Dec 2025 11:45

Tgt Ion: 75 Resp: 10867
 Ion Ratio Lower Upper
 75 100
 110 5.0 18.6 55.8#
 77 0.0 25.3 37.9#

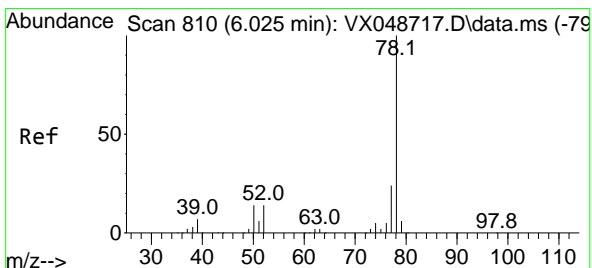
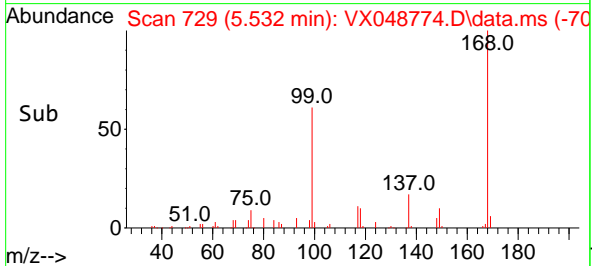
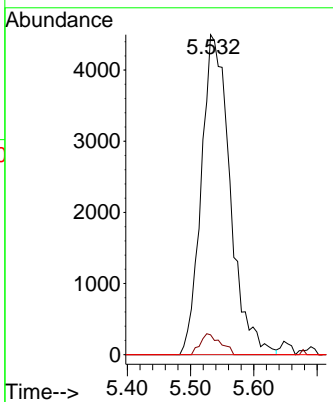
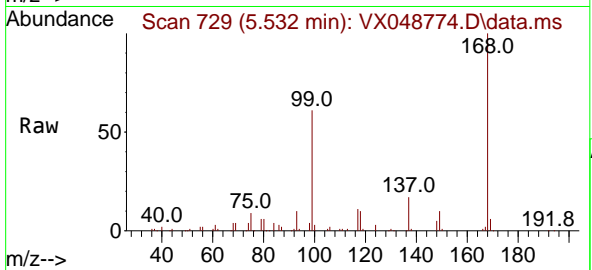




#38
 Carbon Tetrachloride
 Concen: 4.761 ug/l
 RT: 5.532 min Scan# 711
 Delta R.T. -0.134 min
 Lab File: VX048774.D
 Acq: 09 Dec 2025 11:45

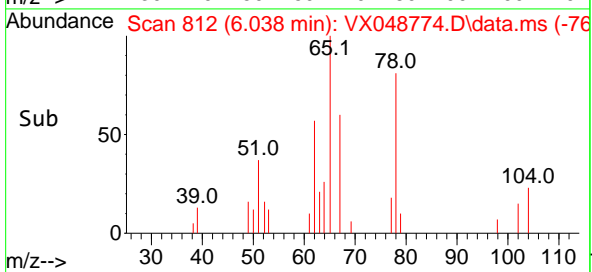
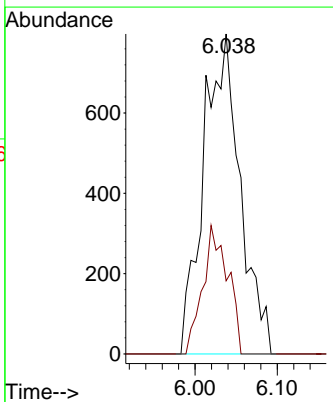
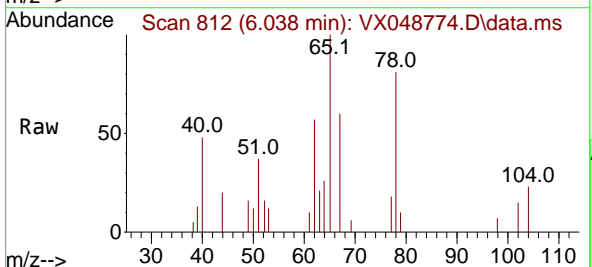
Instrument : MSVOA_X
 ClientSampleId :

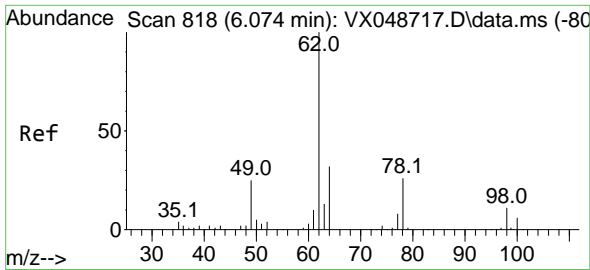
Tgt Ion	Resp	Lower	Upper
117	14227		
119	6.2	80.5	120.7#
121	0.0	25.4	38.0#



#40
 Benzene
 Concen: 0.315 ug/l
 RT: 6.038 min Scan# 812
 Delta R.T. 0.012 min
 Lab File: VX048774.D
 Acq: 09 Dec 2025 11:45

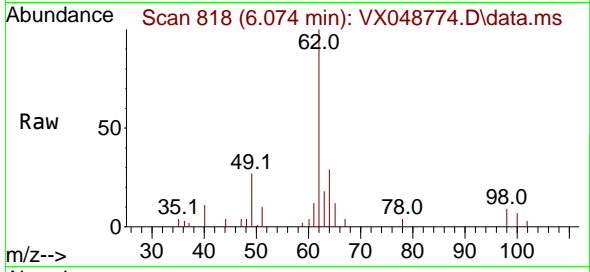
Tgt Ion	Resp	Lower	Upper
78	2464		
77	22.8	18.8	28.2



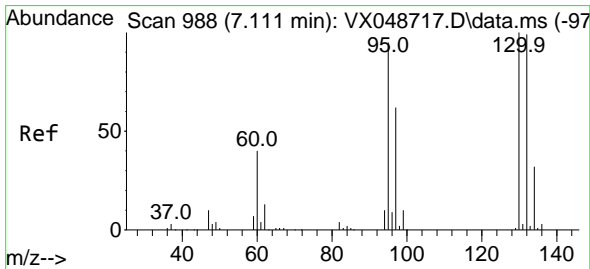
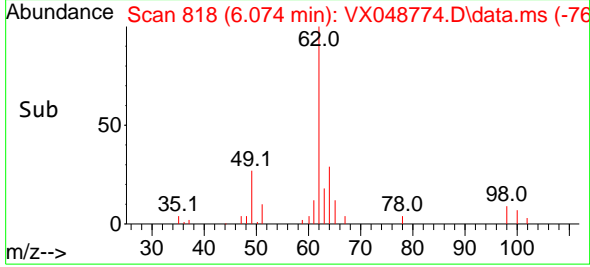
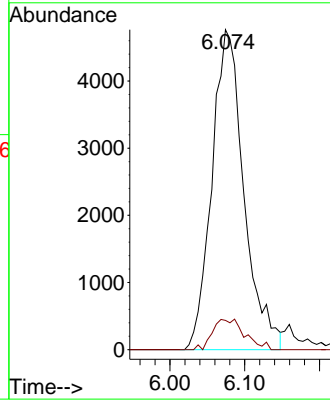


#42
 1,2-Dichloroethane
 Concen: 5.133 ug/l
 RT: 6.074 min Scan# 818
 Delta R.T. 0.000 min
 Lab File: VX048774.D
 Acq: 09 Dec 2025 11:45

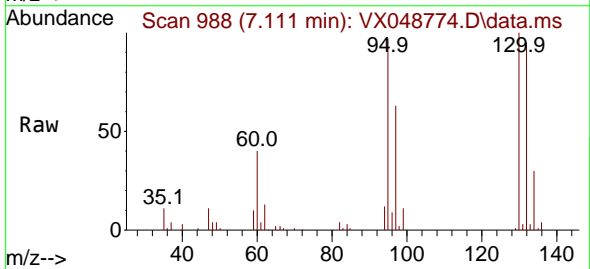
Instrument : MSVOA_X
 ClientSampleId :



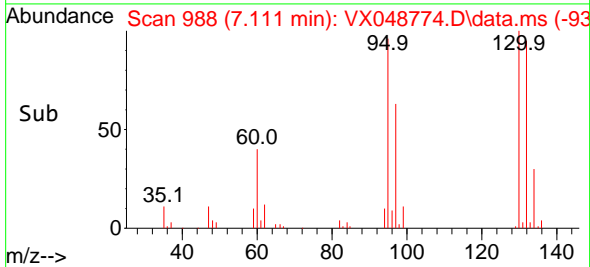
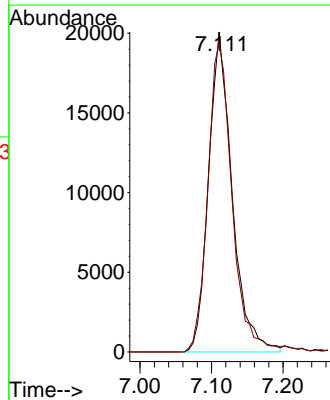
Tgt Ion: 62 Resp: 14210
 Ion Ratio Lower Upper
 62 100
 98 9.5 0.0 20.2

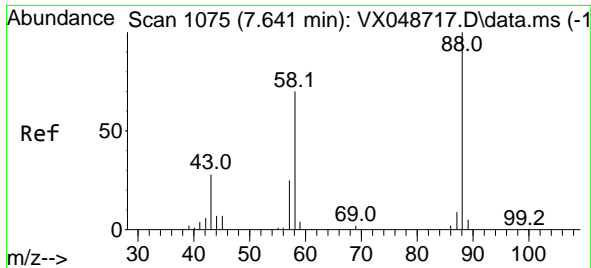


#44
 Trichloroethene
 Concen: 22.527 ug/l
 RT: 7.111 min Scan# 988
 Delta R.T. 0.000 min
 Lab File: VX048774.D
 Acq: 09 Dec 2025 11:45



Tgt Ion: 130 Resp: 45972
 Ion Ratio Lower Upper
 130 100
 95 96.5 0.0 189.6

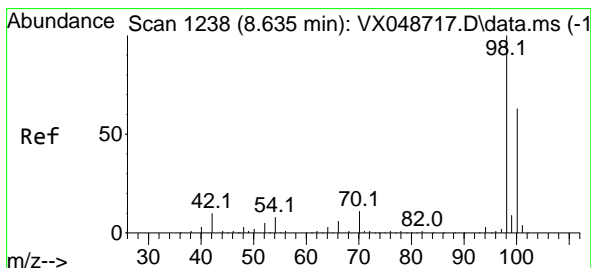
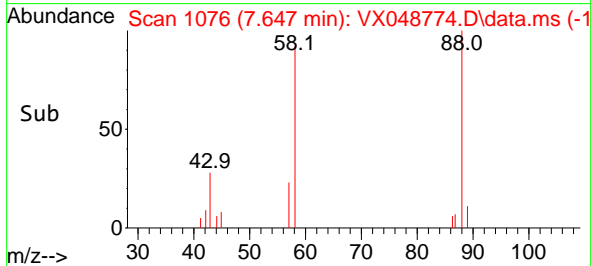
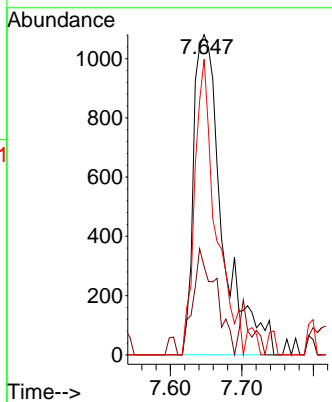
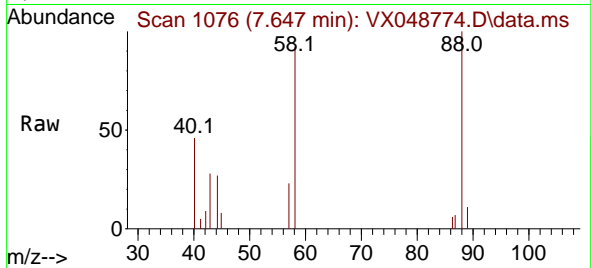




#49
 1,4-Dioxane
 Concen: 91.627 ug/l
 RT: 7.647 min Scan# 1076
 Delta R.T. 0.006 min
 Lab File: VX048774.D
 Acq: 09 Dec 2025 11:45

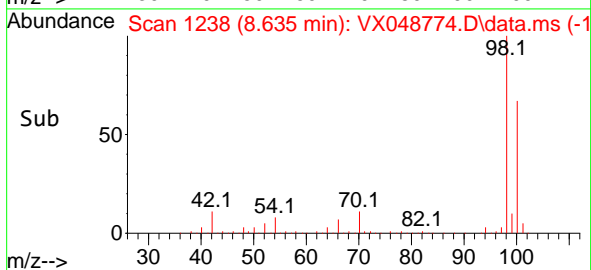
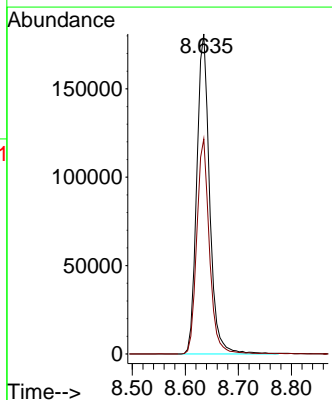
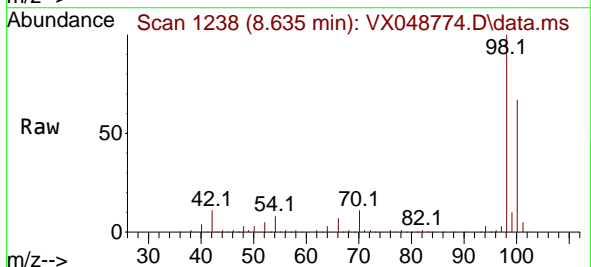
Instrument : MSVOA_X
 ClientSampleId :

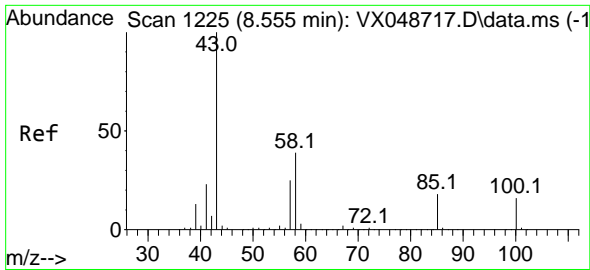
Tgt Ion	Resp	Lower	Upper
88	3026		
43	26.4	28.6	43.0#
58	67.2	58.0	87.0



#50
 Toluene-d8
 Concen: 45.115 ug/l
 RT: 8.635 min Scan# 1238
 Delta R.T. 0.000 min
 Lab File: VX048774.D
 Acq: 09 Dec 2025 11:45

Tgt Ion	Resp	Lower	Upper
98	304625		
100	66.1	53.4	80.0

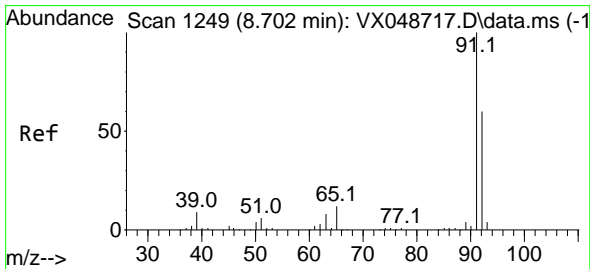
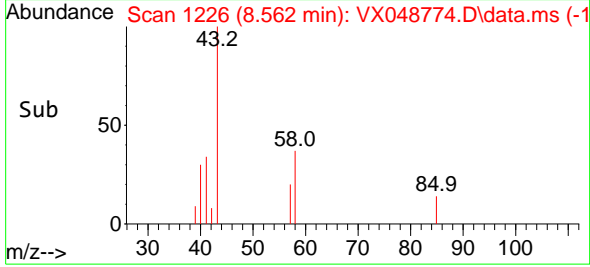
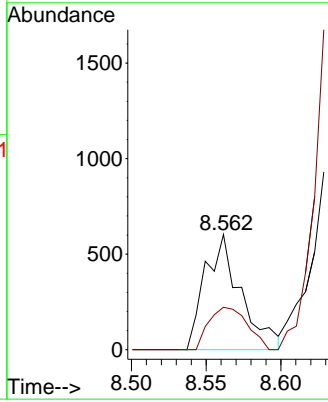
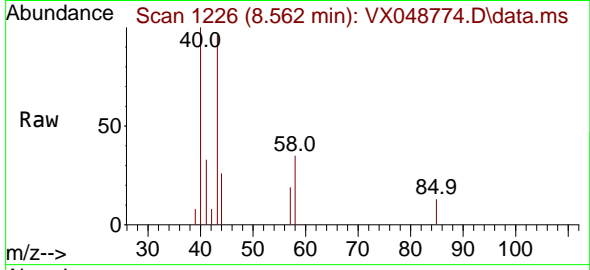




#51
 4-Methyl-2-Pentanone
 Concen: 0.339 ug/l
 RT: 8.562 min Scan# 1226
 Delta R.T. 0.006 min
 Lab File: VX048774.D
 Acq: 09 Dec 2025 11:45

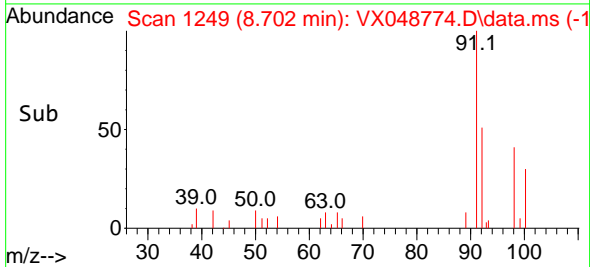
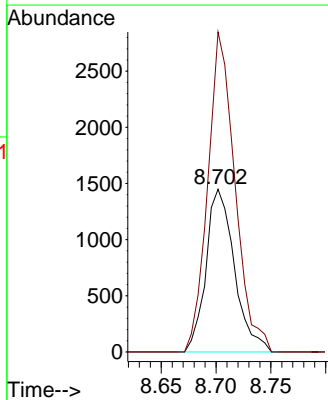
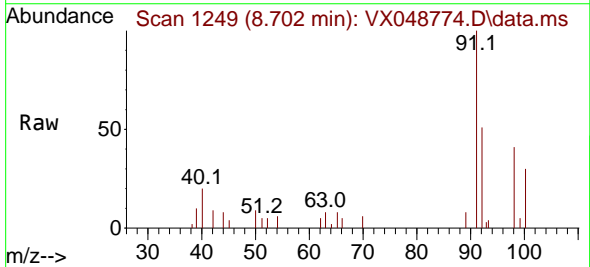
Instrument : MSVOA_X
 ClientSampleId :

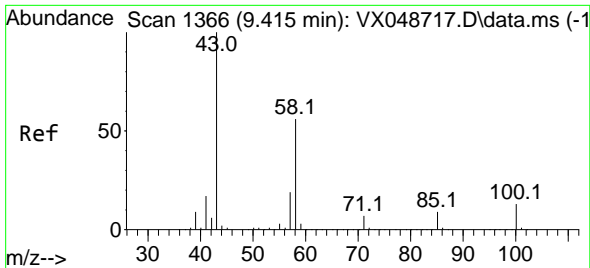
Tgt Ion: 43 Resp: 1005
 Ion Ratio Lower Upper
 43 100
 58 39.6 32.2 48.4



#52
 Toluene
 Concen: 0.555 ug/l
 RT: 8.702 min Scan# 1249
 Delta R.T. 0.000 min
 Lab File: VX048774.D
 Acq: 09 Dec 2025 11:45

Tgt Ion: 92 Resp: 2616
 Ion Ratio Lower Upper
 92 100
 91 188.1 136.3 204.5

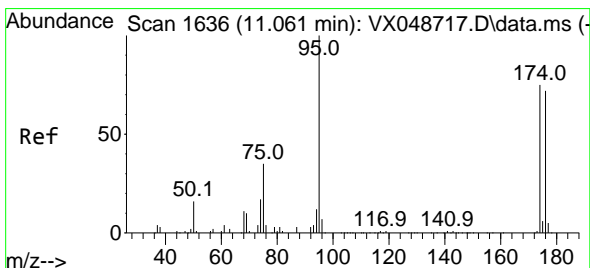
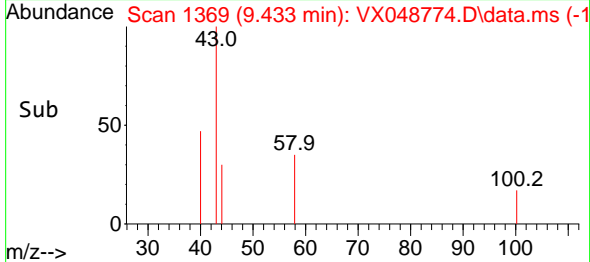
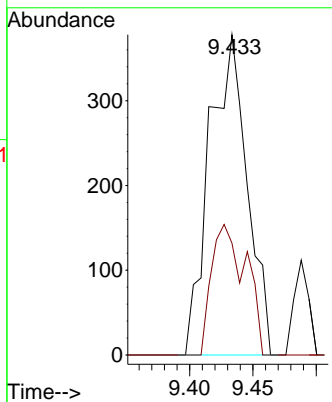
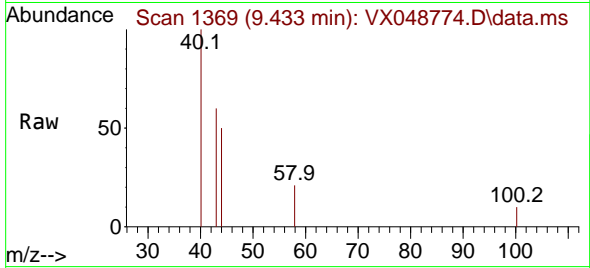




#59
 2-Hexanone
 Concen: 0.377 ug/l
 RT: 9.433 min Scan# 1369
 Delta R.T. 0.018 min
 Lab File: VX048774.D
 Acq: 09 Dec 2025 11:45

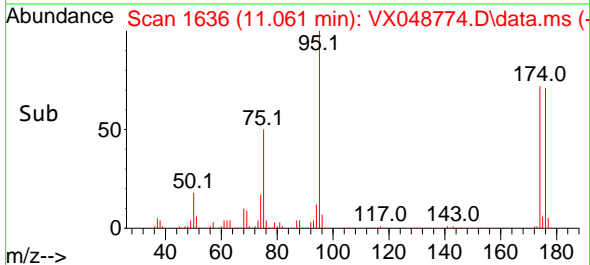
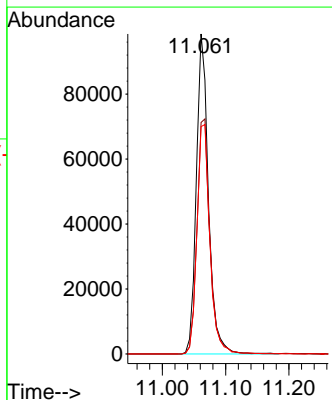
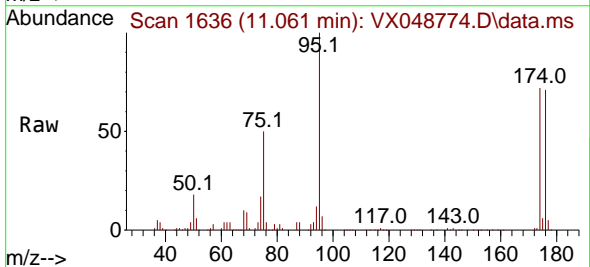
Instrument : MSVOA_X
 ClientSampleId :

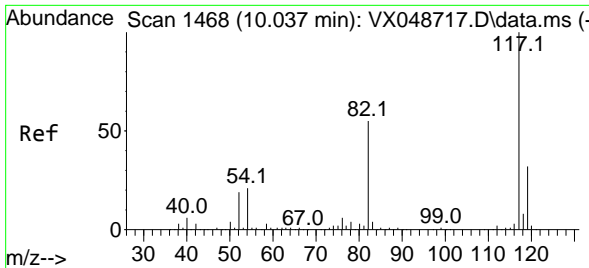
Tgt Ion: 43 Resp: 785
 Ion Ratio Lower Upper
 43 100
 58 36.9 27.8 83.4



#62
 4-Bromofluorobenzene
 Concen: 56.437 ug/l
 RT: 11.061 min Scan# 1636
 Delta R.T. 0.000 min
 Lab File: VX048774.D
 Acq: 09 Dec 2025 11:45

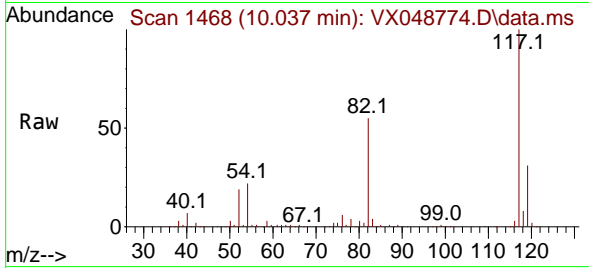
Tgt Ion: 95 Resp: 131405
 Ion Ratio Lower Upper
 95 100
 174 78.1 0.0 157.8
 176 76.7 0.0 154.0



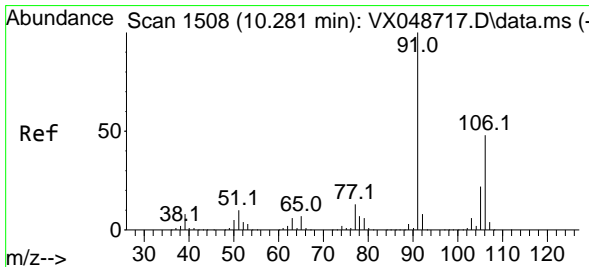
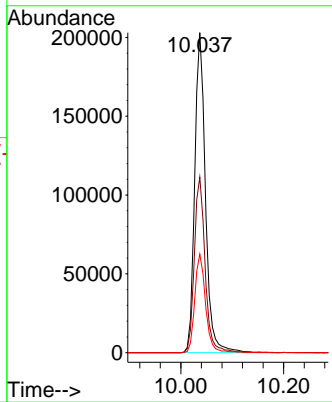
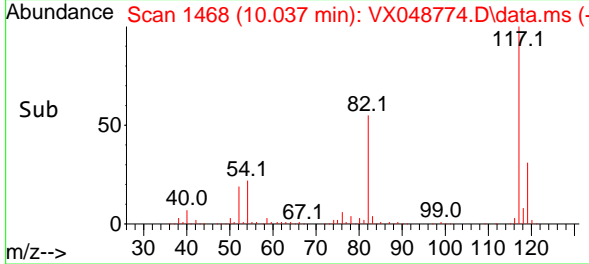


#63
 Chlorobenzene-d5
 Concen: 50.000 ug/l
 RT: 10.037 min Scan# 14
 Delta R.T. 0.000 min
 Lab File: VX048774.D
 Acq: 09 Dec 2025 11:45

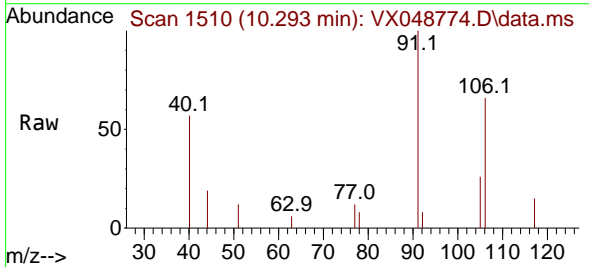
Instrument :
 MSVOA_X
 ClientSampleId :



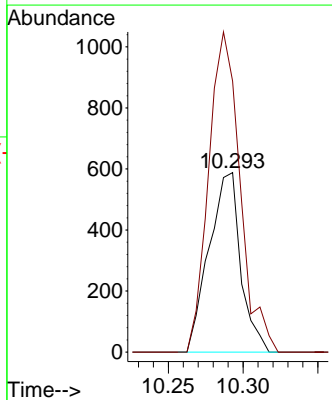
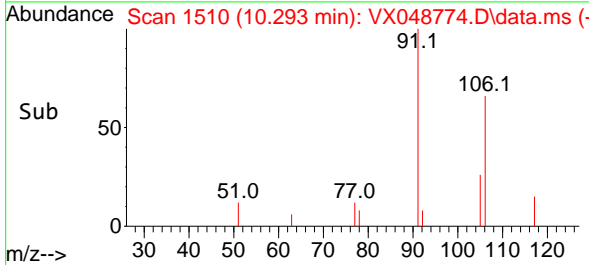
Tgt Ion:117 Resp: 295744
 Ion Ratio Lower Upper
 117 100
 82 54.8 44.1 66.1
 119 30.8 25.2 37.8

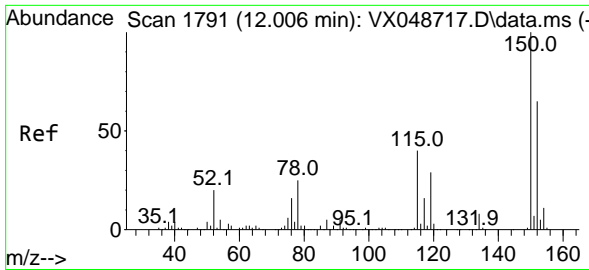


#68
 m/p-Xylenes
 Concen: 0.210 ug/l
 RT: 10.293 min Scan# 1510
 Delta R.T. 0.012 min
 Lab File: VX048774.D
 Acq: 09 Dec 2025 11:45



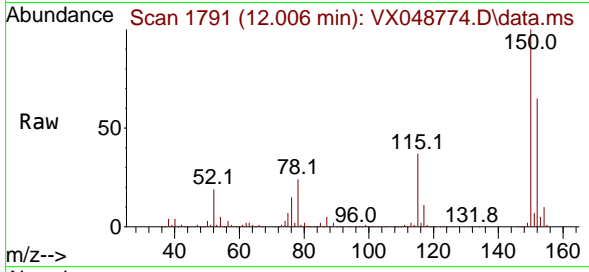
Tgt Ion:106 Resp: 865
 Ion Ratio Lower Upper
 106 100
 91 177.1 164.2 246.4



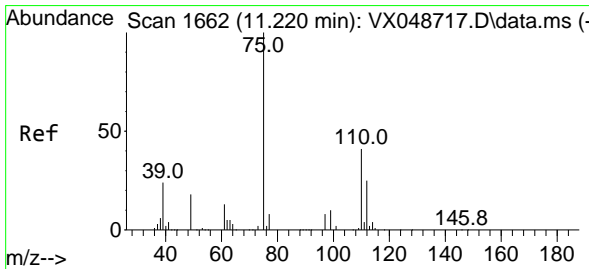
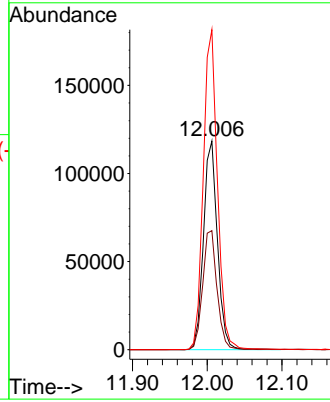
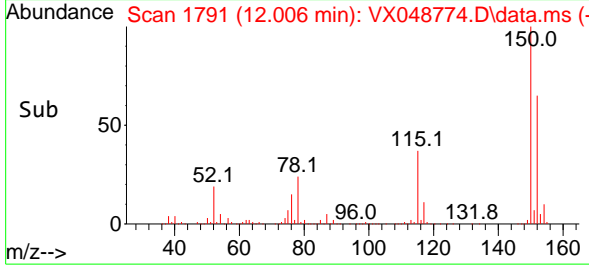


#72
 1,4-Dichlorobenzene-d4
 Concen: 50.000 ug/l
 RT: 12.006 min Scan# 1
 Delta R.T. 0.000 min
 Lab File: VX048774.D
 Acq: 09 Dec 2025 11:45

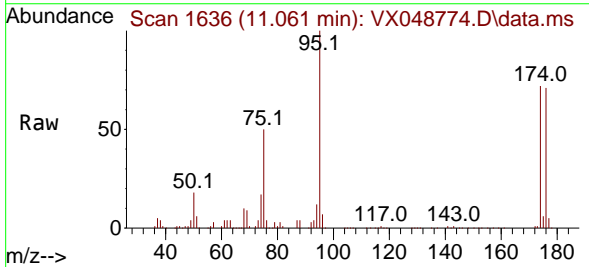
Instrument :
 MSVOA_X
 ClientSampleId :



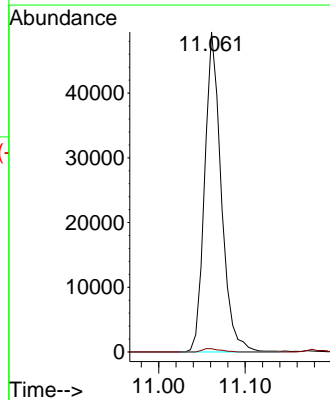
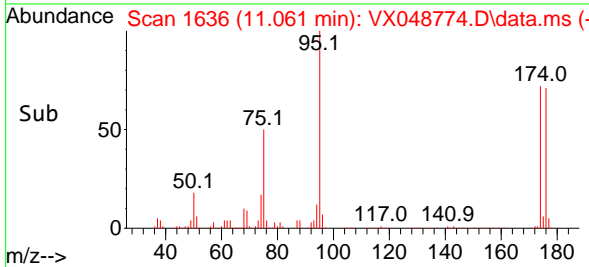
Tgt Ion:152 Resp: 153431
 Ion Ratio Lower Upper
 152 100
 115 58.8 42.1 126.4
 150 155.7 0.0 347.8

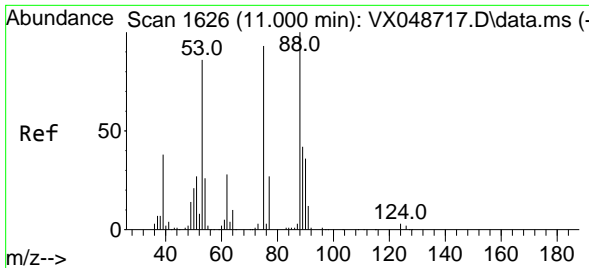


#76
 1,2,3-Trichloropropane
 Concen: 23.051 ug/l
 RT: 11.061 min Scan# 1636
 Delta R.T. -0.158 min
 Lab File: VX048774.D
 Acq: 09 Dec 2025 11:45



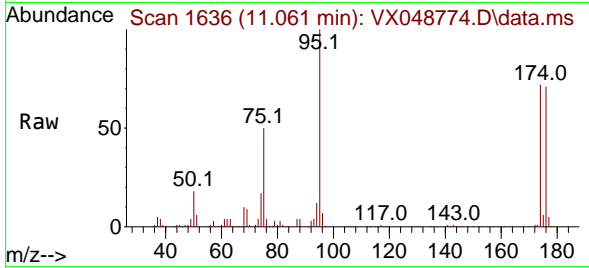
Tgt Ion: 75 Resp: 65872
 Ion Ratio Lower Upper
 75 100
 77 1.1 24.3 73.0#



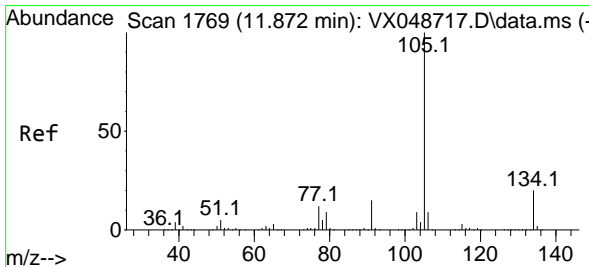
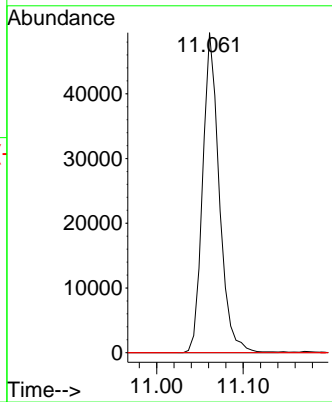
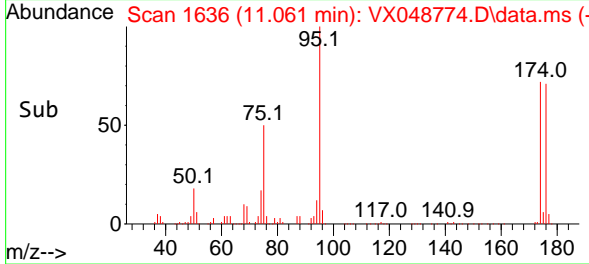


#81
 trans-1,4-Dichloro-2-butene
 Concen: 54.755 ug/l
 RT: 11.061 min Scan# 1
 Delta R.T. 0.061 min
 Lab File: VX048774.D
 Acq: 09 Dec 2025 11:45

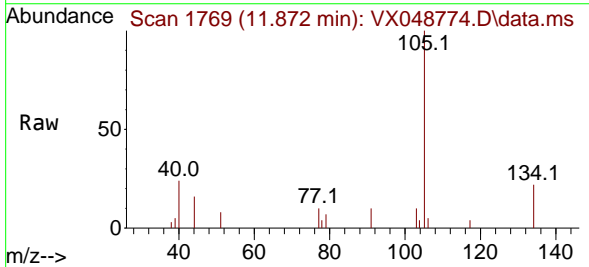
Instrument :
 MSVOA_X
 ClientSampleId :



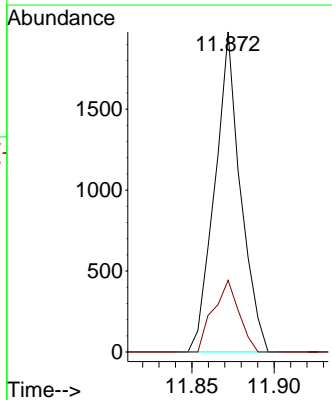
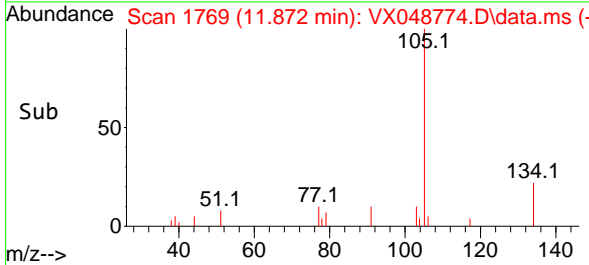
Tgt Ion: 75 Resp: 65872
 Ion Ratio Lower Upper
 75 100
 53 0.0 79.9 119.9#
 89 0.0 67.1 100.7#

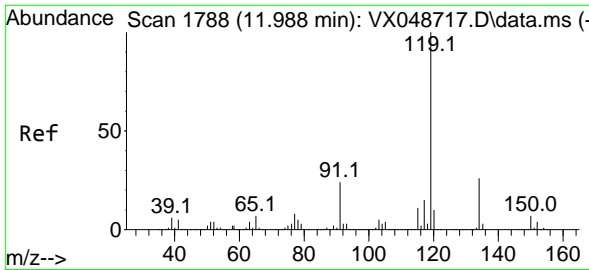


#85
 sec-Butylbenzene
 Concen: 0.201 ug/l
 RT: 11.872 min Scan# 1769
 Delta R.T. 0.000 min
 Lab File: VX048774.D
 Acq: 09 Dec 2025 11:45



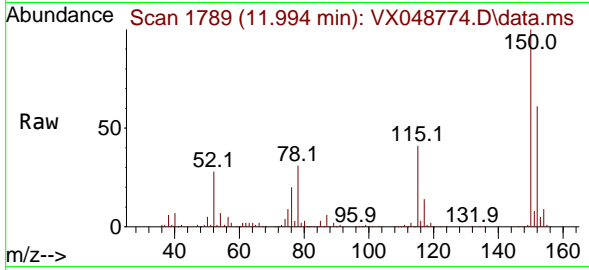
Tgt Ion: 105 Resp: 2152
 Ion Ratio Lower Upper
 105 100
 134 22.4 9.8 29.5



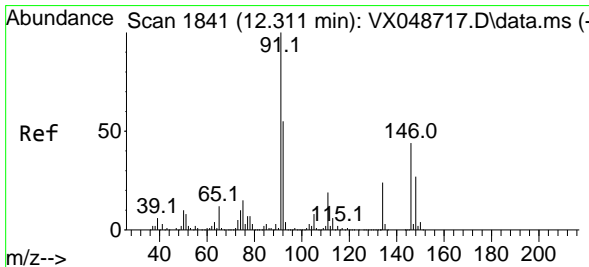
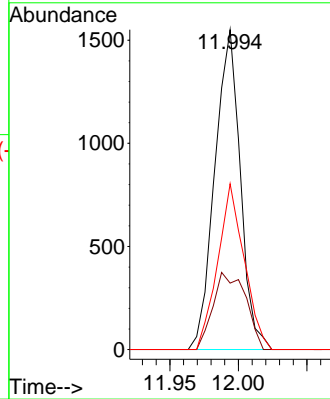
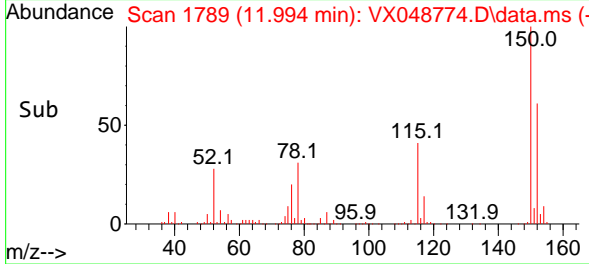


#86
 p-Isopropyltoluene
 Concen: 0.219 ug/l
 RT: 11.994 min Scan# 11
 Delta R.T. 0.006 min
 Lab File: VX048774.D
 Acq: 09 Dec 2025 11:45

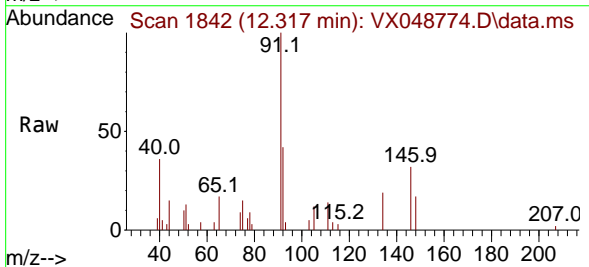
Instrument :
 MSVOA_X
 ClientSampleId :



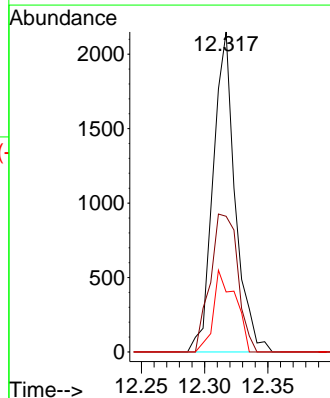
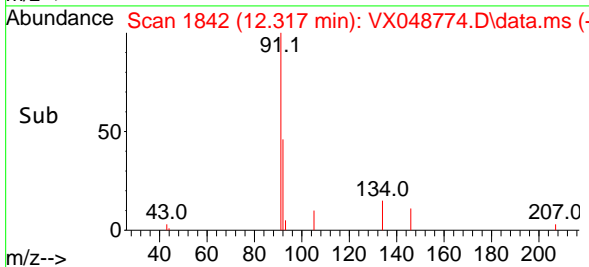
Tgt Ion:119 Resp: 2007
 Ion Ratio Lower Upper
 119 100
 134 30.7 13.1 39.3
 91 53.9 11.8 35.4#

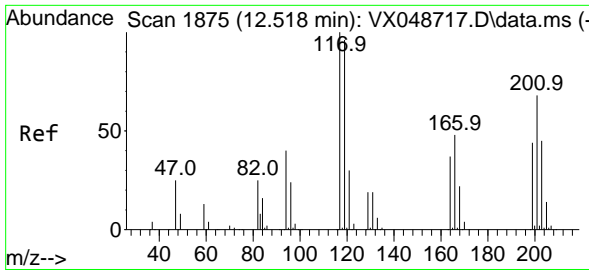


#89
 n-Butylbenzene
 Concen: 0.305 ug/l
 RT: 12.317 min Scan# 1842
 Delta R.T. 0.006 min
 Lab File: VX048774.D
 Acq: 09 Dec 2025 11:45



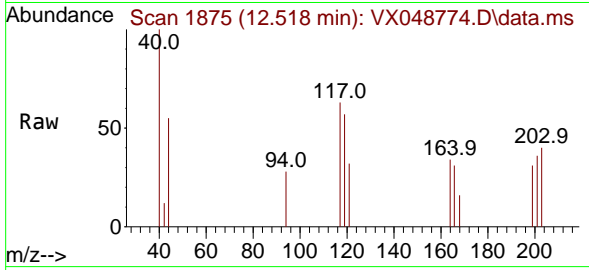
Tgt Ion: 91 Resp: 2609
 Ion Ratio Lower Upper
 91 100
 92 53.5 27.1 81.3
 134 25.4 12.9 38.6



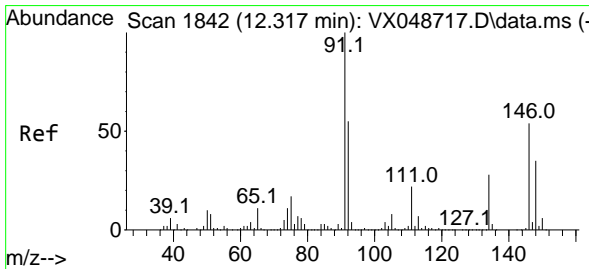
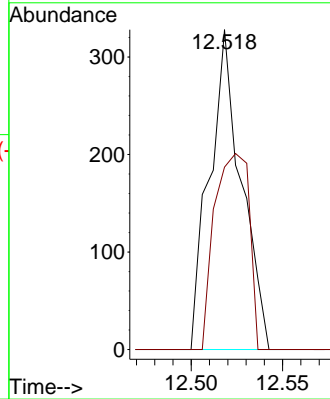
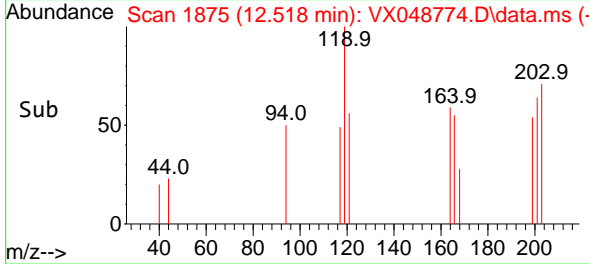


#90
 Hexachloroethane
 Concen: 0.213 ug/l
 RT: 12.518 min Scan# 1875
 Delta R.T. 0.000 min
 Lab File: VX048774.D
 Acq: 09 Dec 2025 11:45

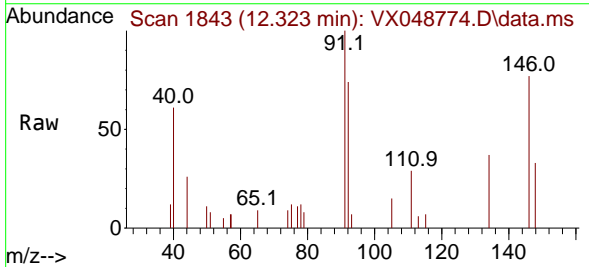
Instrument : MSVOA_X
 ClientSampleId :



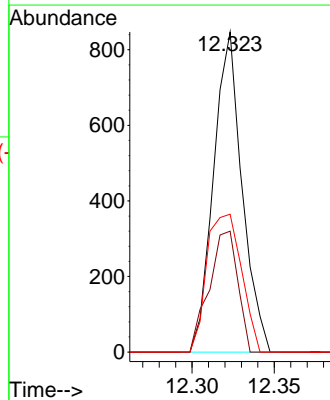
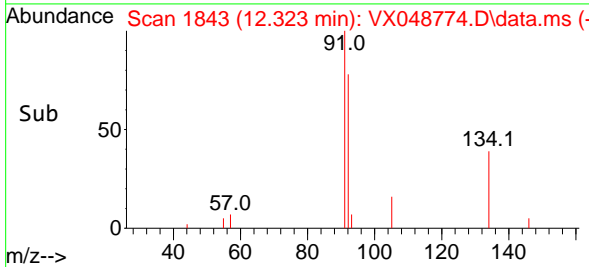
Tgt Ion:117 Resp: 398
 Ion Ratio Lower Upper
 117 100
 201 66.3 36.4 109.1

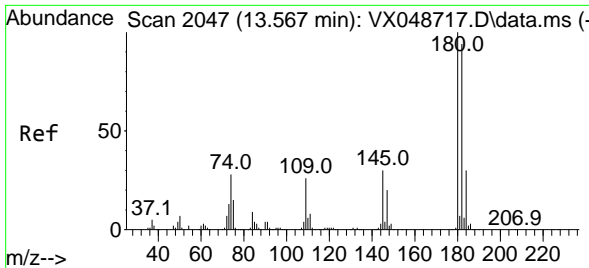


#91
 1,2-Dichlorobenzene
 Concen: 0.207 ug/l
 RT: 12.323 min Scan# 1843
 Delta R.T. 0.006 min
 Lab File: VX048774.D
 Acq: 09 Dec 2025 11:45



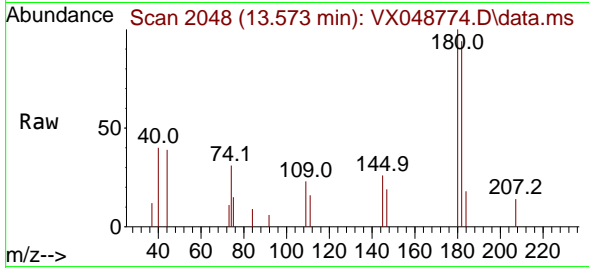
Tgt Ion:146 Resp: 1021
 Ion Ratio Lower Upper
 146 100
 111 37.9 20.8 62.5
 148 52.4 32.0 96.0



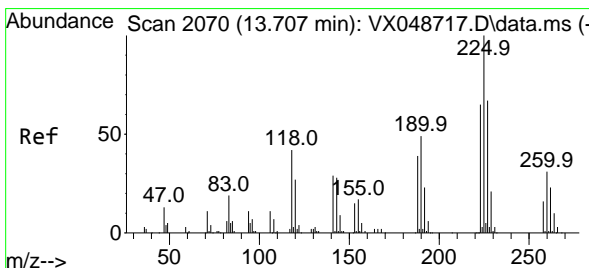
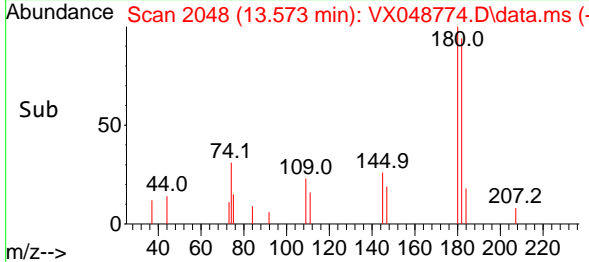
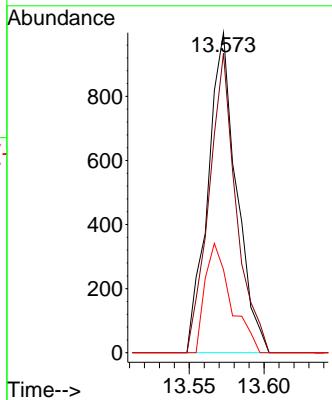


#93
 1,2,4-Trichlorobenzene
 Concen: 0.409 ug/l
 RT: 13.573 min Scan# 2048
 Delta R.T. 0.006 min
 Lab File: VX048774.D
 Acq: 09 Dec 2025 11:45

Instrument : MSVOA_X
 ClientSampleId :

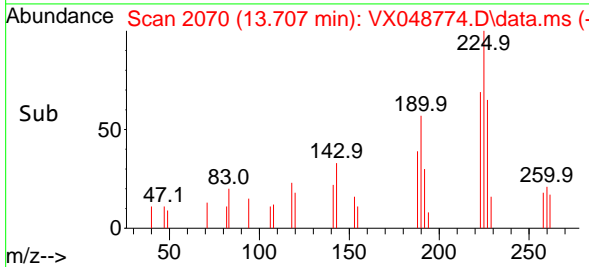
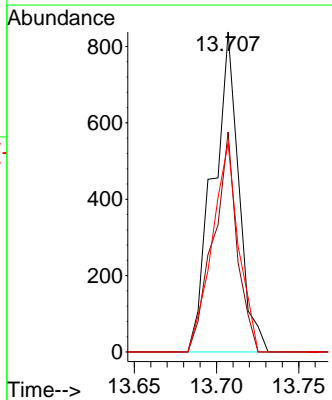
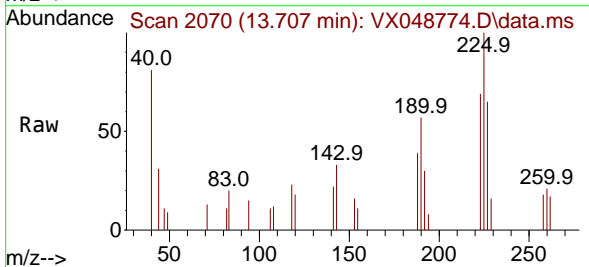


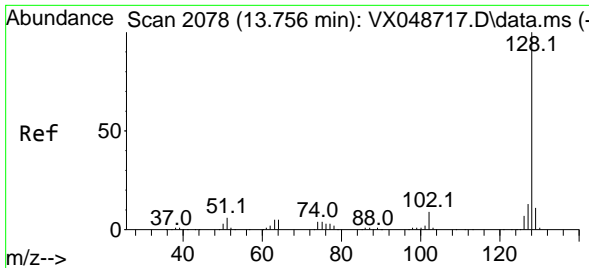
Tgt Ion:180 Resp: 1332
 Ion Ratio Lower Upper
 180 100
 182 88.9 46.9 140.8
 145 30.9 15.1 45.3



#94
 Hexachlorobutadiene
 Concen: 0.679 ug/l
 RT: 13.707 min Scan# 2070
 Delta R.T. 0.000 min
 Lab File: VX048774.D
 Acq: 09 Dec 2025 11:45

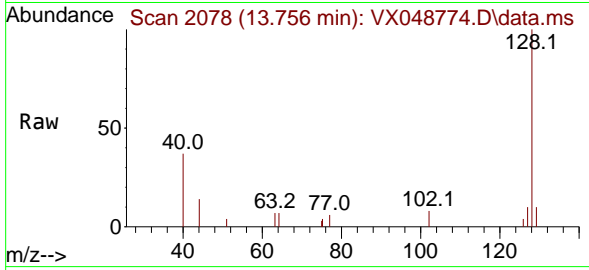
Tgt Ion:225 Resp: 915
 Ion Ratio Lower Upper
 225 100
 223 63.0 33.0 98.9
 227 67.2 32.9 98.7



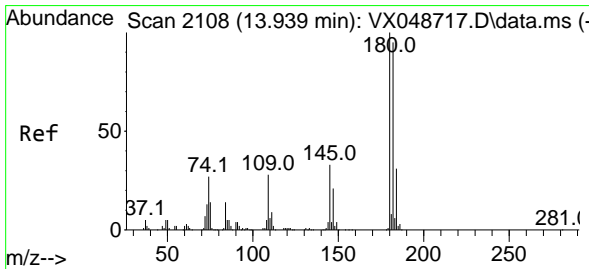
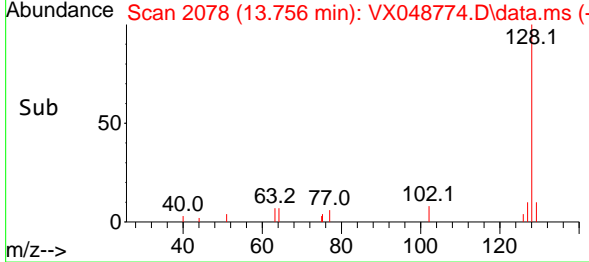
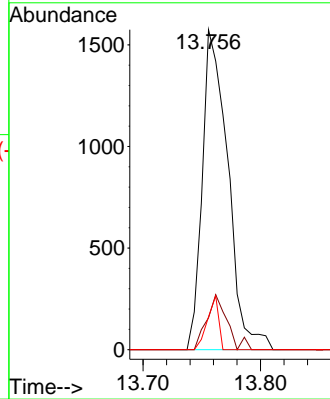


#95
 Naphthalene
 Concen: Below Cal
 RT: 13.756 min Scan# 20
 Delta R.T. 0.000 min
 Lab File: VX048774.D
 Acq: 09 Dec 2025 11:45

Instrument :
 MSVOA_X
 ClientSampleId :



Tgt Ion:128 Resp: 2377
 Ion Ratio Lower Upper
 128 100
 127 13.7 10.2 15.2
 129 7.4 8.6 13.0#



#96
 1,2,3-Trichlorobenzene
 Concen: 0.408 ug/l
 RT: 13.939 min Scan# 2108
 Delta R.T. 0.000 min
 Lab File: VX048774.D
 Acq: 09 Dec 2025 11:45

Tgt Ion:180 Resp: 1227
 Ion Ratio Lower Upper
 180 100
 182 94.5 48.0 144.2
 145 29.6 16.6 49.8

