

Data Path : Z:\voasrv\HPCHEM1\MSVOA\_X\Data\VX120925\  
 Data File : VX048774.D  
 Acq On : 09 Dec 2025 11:45  
 Operator : JC/MD  
 Sample : Q3788-01  
 Misc : 5.0mL/MSVOA\_X/WATER  
 ALS Vial : 8 Sample Multiplier: 1

Instrument :  
 MSVOA\_X  
 ClientSampleId :  
 OWBR-05-135-120525

Quant Time: Dec 10 00:16:56 2025  
 Quant Method : Z:\voasrv\HPCHEM1\MSVOA\_X\Method\82X120425W.M  
 Quant Title : SW846 8260  
 QLast Update : Fri Dec 05 03:27:34 2025  
 Response via : Initial Calibration

| Compound                      | R.T.   | QIon  | Response | Conc     | Units  | Dev(Min) |
|-------------------------------|--------|-------|----------|----------|--------|----------|
| Internal Standards            |        |       |          |          |        |          |
| 1) Pentafluorobenzene         | 5.538  | 168   | 135193   | 50.000   | ug/l   | 0.00     |
| 34) 1,4-Difluorobenzene       | 6.745  | 114   | 279762   | 50.000   | ug/l   | 0.00     |
| 63) Chlorobenzene-d5          | 10.037 | 117   | 295744   | 50.000   | ug/l   | 0.00     |
| 72) 1,4-Dichlorobenzene-d4    | 12.006 | 152   | 153431   | 50.000   | ug/l   | 0.00     |
| System Monitoring Compounds   |        |       |          |          |        |          |
| 33) 1,2-Dichloroethane-d4     | 5.940  | 65    | 94731    | 52.207   | ug/l   | 0.00     |
| Spiked Amount                 | 50.000 | Range | 78 - 117 | Recovery | =      | 104.420% |
| 35) Dibromofluoromethane      | 5.373  | 113   | 84981    | 44.117   | ug/l   | 0.00     |
| Spiked Amount                 | 50.000 | Range | 75 - 124 | Recovery | =      | 88.240%  |
| 50) Toluene-d8                | 8.635  | 98    | 304625   | 45.115   | ug/l   | 0.00     |
| Spiked Amount                 | 50.000 | Range | 92 - 112 | Recovery | =      | 90.240%# |
| 62) 4-Bromofluorobenzene      | 11.061 | 95    | 131405   | 56.437   | ug/l   | 0.00     |
| Spiked Amount                 | 50.000 | Range | 83 - 123 | Recovery | =      | 112.880% |
| Target Compounds              |        |       |          |          |        |          |
|                               |        |       |          |          |        | Qvalue   |
| 3) Chloromethane              | 1.301  | 50    | 2432     | 1.399    | ug/l   | 99       |
| 4) Vinyl Chloride             | 1.386  | 62    | 1702     | 0.919    | ug/l   | 95       |
| 5) Bromomethane               | 1.630  | 94    | 486      | 0.425    | ug/l # | 47       |
| 6) Chloroethane               | 1.703  | 64    | 263      | 0.228    | ug/l # | 26       |
| 9) 1,1,2-Trichlorotrifluo...  | 2.331  | 101   | 520      | 0.338    | ug/l # | 25       |
| 10) Methyl Iodide             | 2.471  | 142   | 1423     | 0.650    | ug/l   | 97       |
| 11) Tert butyl alcohol        | 2.928  | 59    | 324      | 1.106    | ug/l # | 73       |
| 12) 1,1-Dichloroethene        | 2.325  | 96    | 187750   | 119.596  | ug/l   | 99       |
| 13) Acrolein                  | 2.252  | 56    | 302      | 41.073   | ug/l   | 98       |
| 15) Acrylonitrile             | 3.081  | 53    | 388      | 0.425    | ug/l   | 94       |
| 16) Acetone                   | 2.374  | 43    | 8653     | 12.457   | ug/l   | 98       |
| 17) Carbon Disulfide          | 2.520  | 76    | 19382    | 4.251    | ug/l   | 99       |
| 18) Methyl Acetate            | 2.697  | 43    | 603      | 0.309    | ug/l # | 63       |
| 21) trans-1,2-Dichloroethene  | 3.093  | 96    | 18284    | 11.411   | ug/l   | 98       |
| 24) 1,1-Dichloroethane        | 3.605  | 63    | 25666    | 9.344    | ug/l   | 99       |
| 25) 2-Butanone                | 4.526  | 43    | 699      | 0.682    | ug/l # | 51       |
| 26) 2,2-Dichloropropane       | 4.526  | 77    | 1367     | 0.562    | ug/l # | 52       |
| 27) cis-1,2-Dichloroethene    | 4.477  | 96    | 167466   | 92.623   | ug/l   | 94       |
| 29) Tetrahydrofuran           | 5.020  | 42    | 1065     | 1.360    | ug/l # | 64       |
| 36) 1,1-Dichloropropene       | 5.532  | 75    | 10867    | 4.119    | ug/l # | 45       |
| 38) Carbon Tetrachloride      | 5.532  | 117   | 14227    | 4.761    | ug/l # | 15       |
| 40) Benzene                   | 6.038  | 78    | 2464     | 0.315    | ug/l   | 99       |
| 42) 1,2-Dichloroethane        | 6.074  | 62    | 14210    | 5.133    | ug/l   | 99       |
| 44) Trichloroethene           | 7.111  | 130   | 45972    | 22.527   | ug/l   | 98       |
| 49) 1,4-Dioxane               | 7.647  | 88    | 3026     | 91.627   | ug/l # | 90       |
| 51) 4-Methyl-2-Pentanone      | 8.562  | 43    | 1005     | 0.339    | ug/l   | 99       |
| 52) Toluene                   | 8.702  | 92    | 2616     | 0.555    | ug/l   | 87       |
| 59) 2-Hexanone                | 9.433  | 43    | 785      | 0.377    | ug/l   | 74       |
| 68) m/p-Xylenes               | 10.293 | 106   | 865      | 0.210    | ug/l   | 82       |
| 76) 1,2,3-Trichloropropane    | 11.061 | 75    | 65872    | 23.051   | ug/l # | 30       |
| 81) trans-1,4-Dichloro-2-b... | 11.061 | 75    | 65872    | 54.755   | ug/l # | 3        |
| 85) sec-Butylbenzene          | 11.872 | 105   | 2152     | 0.201    | ug/l   | 94       |
| 86) p-Isopropyltoluene        | 11.994 | 119   | 2007     | 0.219    | ug/l # | 66       |
| 89) n-Butylbenzene            | 12.317 | 91    | 2609     | 0.305    | ug/l   | 99       |
| 90) Hexachloroethane          | 12.518 | 117   | 398      | 0.213    | ug/l   | 92       |
| 91) 1,2-Dichlorobenzene       | 12.323 | 146   | 1021     | 0.207    | ug/l   | 89       |

Data Path : Z:\voasrv\HPCHEM1\MSVOA\_X\Data\VX120925\  
Data File : VX048774.D  
Acq On : 09 Dec 2025 11:45  
Operator : JC/MD  
Sample : Q3788-01  
Misc : 5.0mL/MSVOA\_X/WATER  
ALS Vial : 8 Sample Multiplier: 1

Instrument :  
MSVOA\_X  
ClientSampleId :  
OWBR-05-135-120525

Quant Time: Dec 10 00:16:56 2025  
Quant Method : Z:\voasrv\HPCHEM1\MSVOA\_X\Method\82X120425W.M  
Quant Title : SW846 8260  
QLast Update : Fri Dec 05 03:27:34 2025  
Response via : Initial Calibration

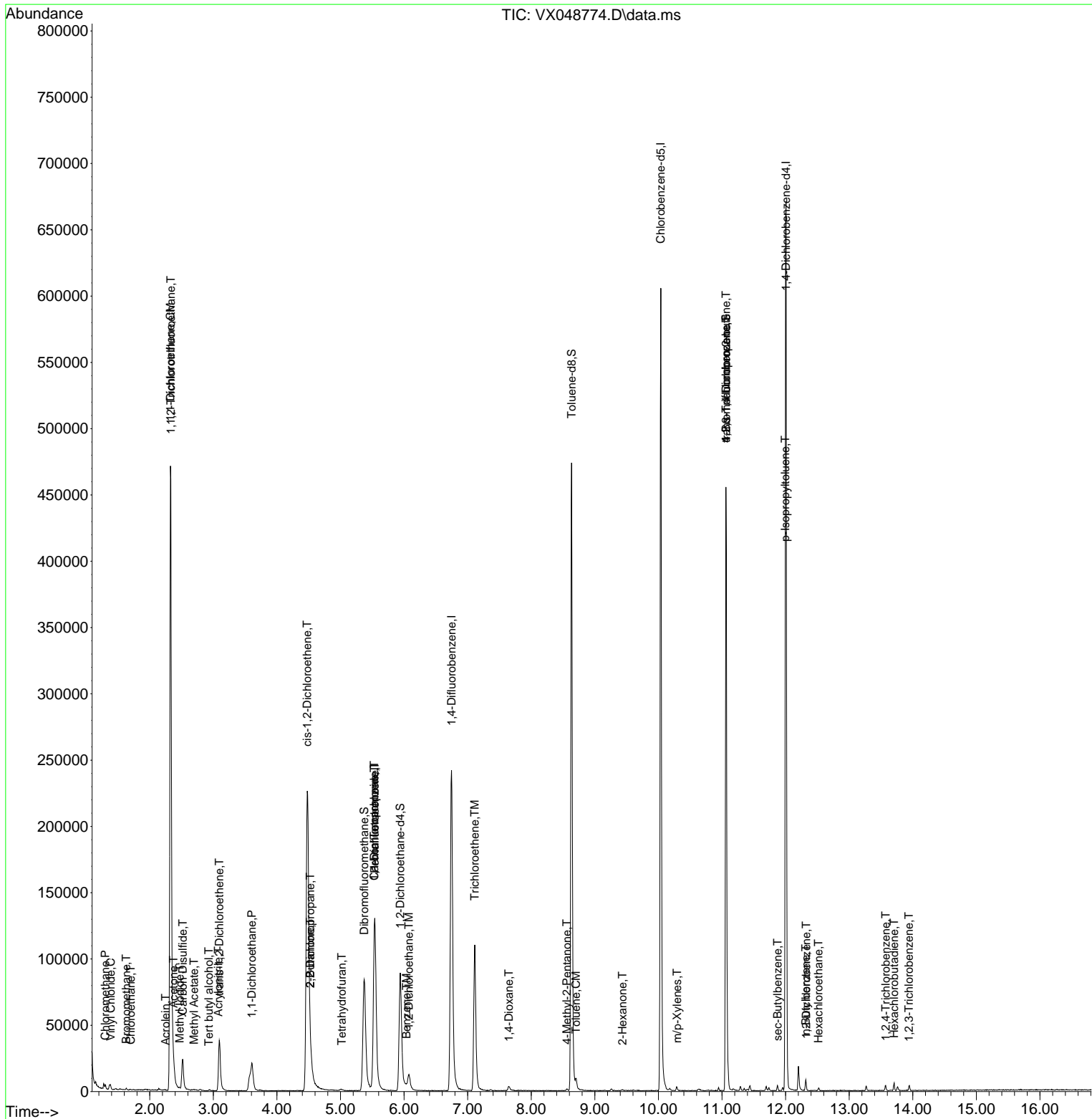
| Compound                   | R.T.   | QIon | Response | Conc      | Units | Dev(Min) |
|----------------------------|--------|------|----------|-----------|-------|----------|
| 93) 1,2,4-Trichlorobenzene | 13.573 | 180  | 1332     | 0.409     | ug/l  | 96       |
| 94) Hexachlorobutadiene    | 13.707 | 225  | 915      | 0.679     | ug/l  | 97       |
| 95) Naphthalene            | 13.756 | 128  | 2377     | Below Cal | #     | 94       |
| 96) 1,2,3-Trichlorobenzene | 13.939 | 180  | 1227     | 0.408     | ug/l  | 97       |

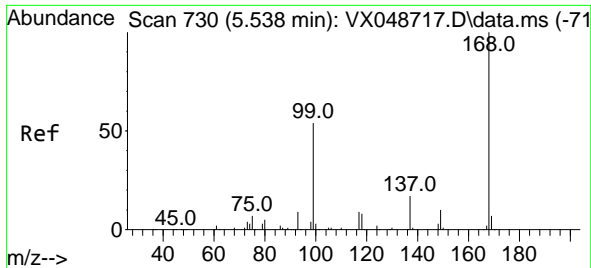
(#) = qualifier out of range (m) = manual integration (+) = signals summed

Data Path : Z:\voasrv\HPCHEM1\MSVOA\_X\Data\VX120925\  
 Data File : VX048774.D  
 Acq On : 09 Dec 2025 11:45  
 Operator : JC/MD  
 Sample : Q3788-01  
 Misc : 5.0mL/MSVOA\_X/WATER  
 ALS Vial : 8 Sample Multiplier: 1

Instrument :  
 MSVOA\_X  
 ClientSampleId :  
 OWBR-05-135-120525

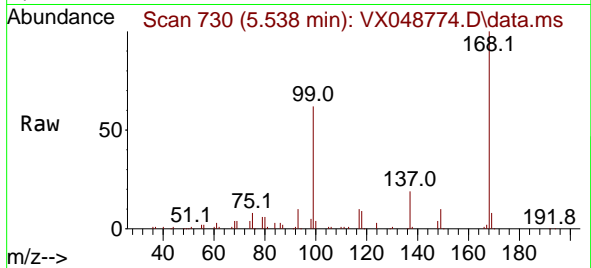
Quant Time: Dec 10 00:16:56 2025  
 Quant Method : Z:\voasrv\HPCHEM1\MSVOA\_X\Method\82X120425W.M  
 Quant Title : SW846 8260  
 QLast Update : Fri Dec 05 03:27:34 2025  
 Response via : Initial Calibration



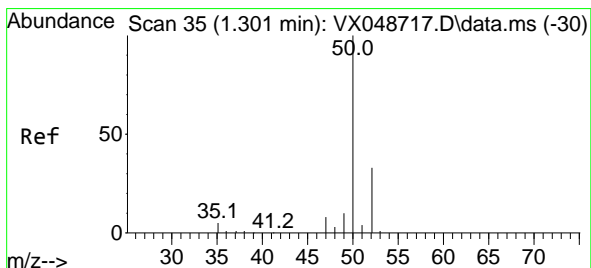
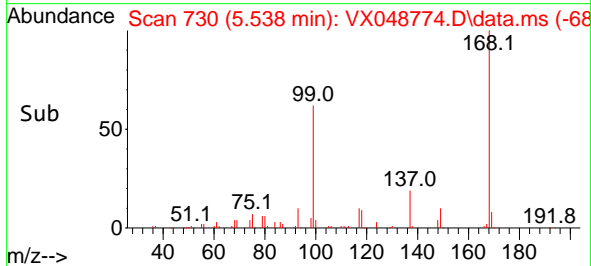
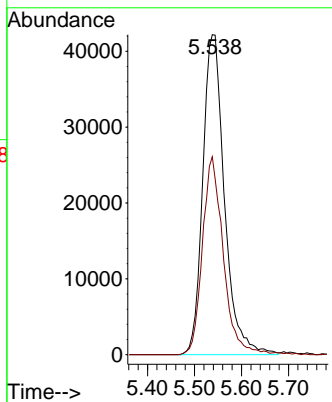


#1  
 Pentafluorobenzene  
 Concen: 50.000 ug/l  
 RT: 5.538 min Scan# 71  
 Delta R.T. -0.000 min  
 Lab File: VX048774.D  
 Acq: 09 Dec 2025 11:45

Instrument : MSVOA\_X  
 ClientSampleId : OWBR-05-135-120525

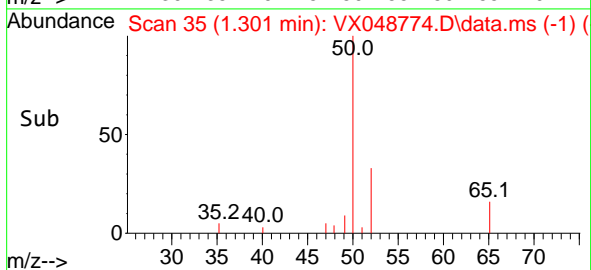
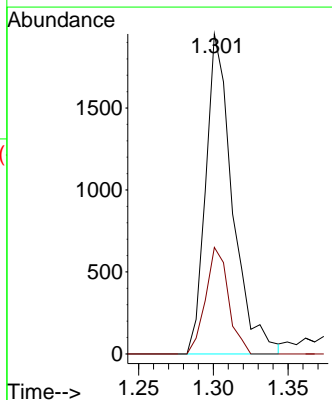
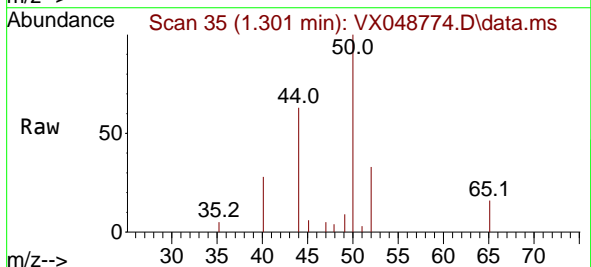


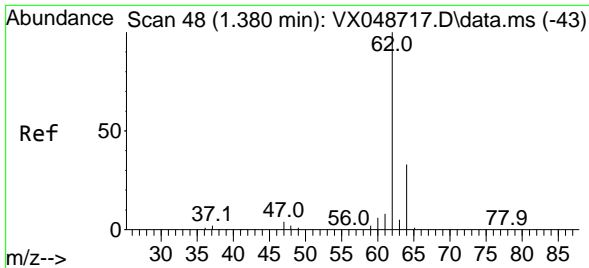
Tgt Ion:168 Resp: 135193  
 Ion Ratio Lower Upper  
 168 100  
 99 61.8 44.2 66.4



#3  
 Chloromethane  
 Concen: 1.399 ug/l  
 RT: 1.301 min Scan# 35  
 Delta R.T. 0.000 min  
 Lab File: VX048774.D  
 Acq: 09 Dec 2025 11:45

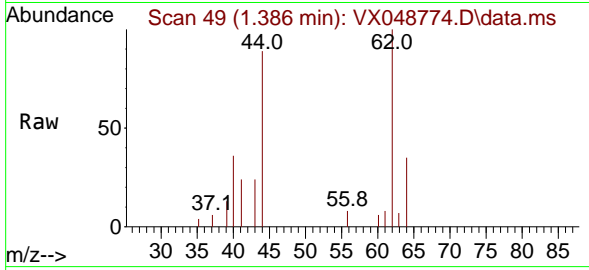
Tgt Ion: 50 Resp: 2432  
 Ion Ratio Lower Upper  
 50 100  
 52 33.3 26.4 39.6



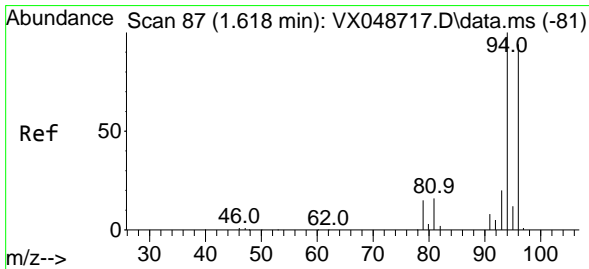
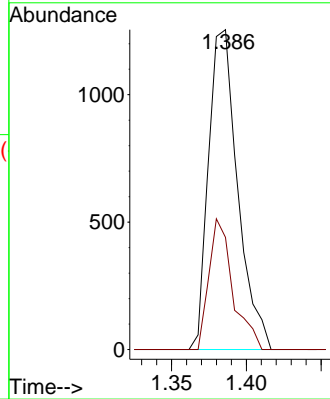
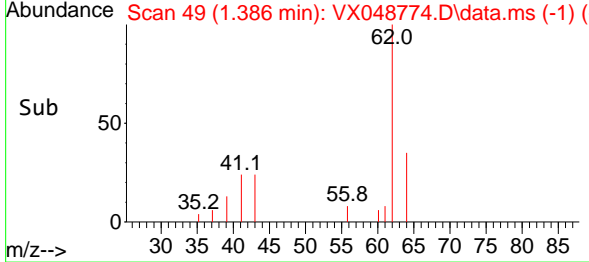


#4  
 Vinyl Chloride  
 Concen: 0.919 ug/l  
 RT: 1.386 min Scan# 49  
 Delta R.T. 0.006 min  
 Lab File: VX048774.D  
 Acq: 09 Dec 2025 11:45

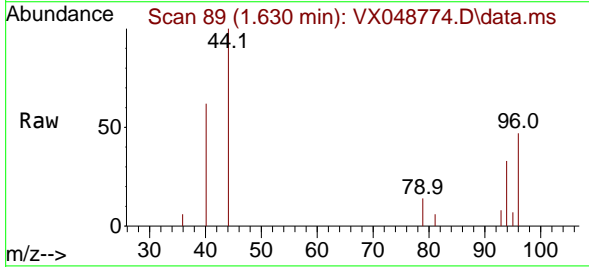
Instrument : MSVOA\_X  
 ClientSampleId : OWBR-05-135-120525



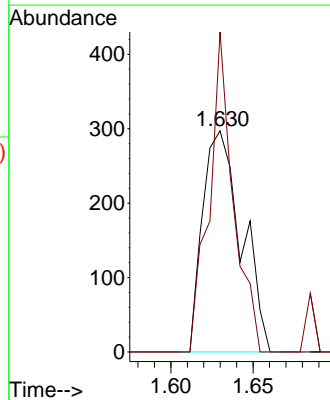
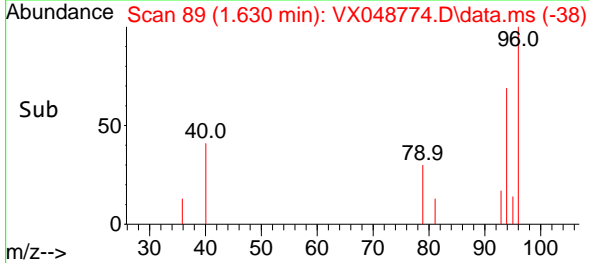
Tgt Ion: 62 Resp: 1702  
 Ion Ratio Lower Upper  
 62 100  
 64 35.1 26.0 39.0

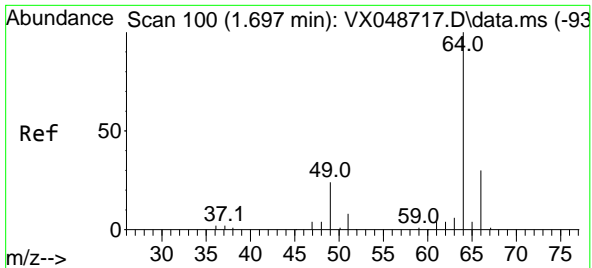


#5  
 Bromomethane  
 Concen: 0.425 ug/l  
 RT: 1.630 min Scan# 89  
 Delta R.T. 0.012 min  
 Lab File: VX048774.D  
 Acq: 09 Dec 2025 11:45



Tgt Ion: 94 Resp: 486  
 Ion Ratio Lower Upper  
 94 100  
 96 144.8 75.2 112.8#

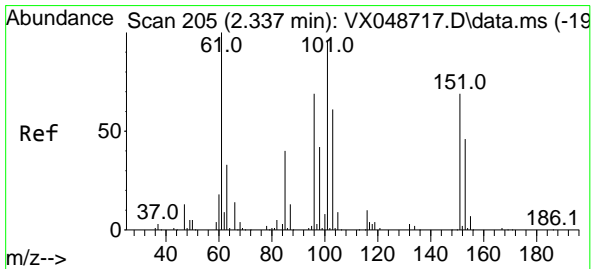
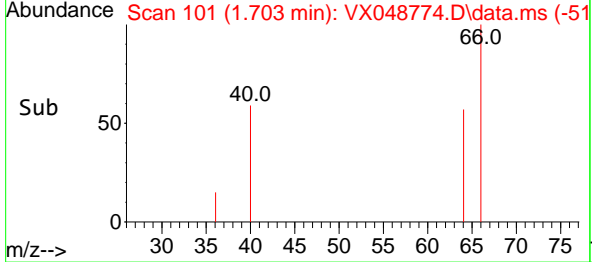
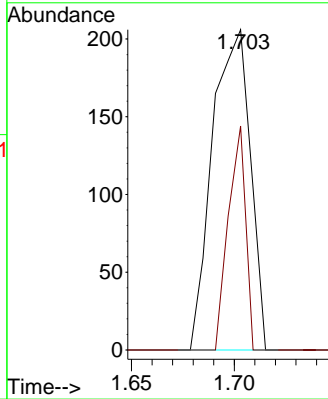
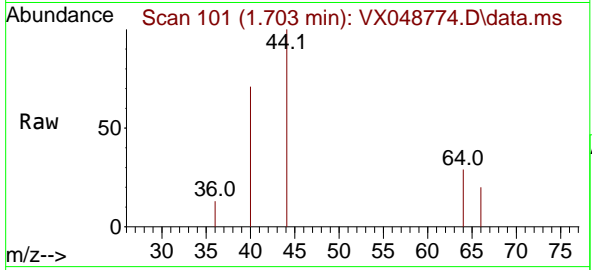




#6  
 Chloroethane  
 Concen: 0.228 ug/l  
 RT: 1.703 min Scan# 101  
 Delta R.T. 0.006 min  
 Lab File: VX048774.D  
 Acq: 09 Dec 2025 11:45

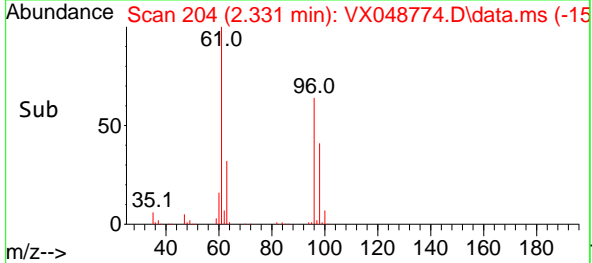
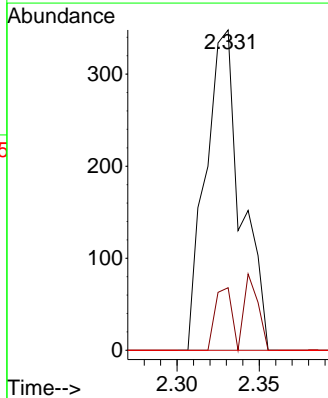
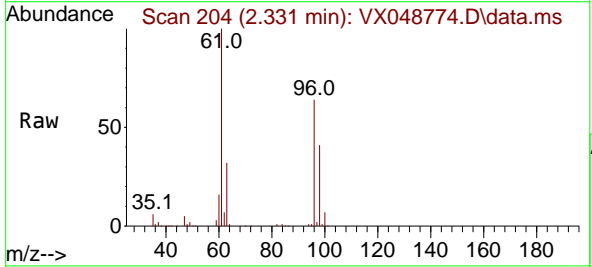
Instrument : MSVOA\_X  
 ClientSampleId : OWBR-05-135-120525

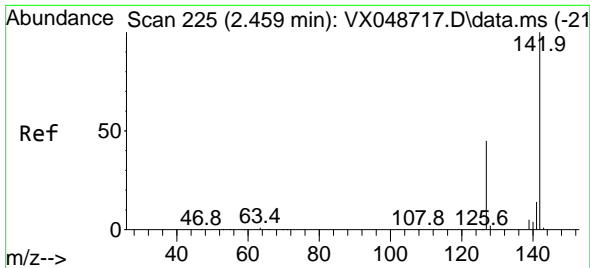
Tgt Ion: 64 Resp: 263  
 Ion Ratio Lower Upper  
 64 100  
 66 69.9 24.0 36.0#



#9  
 1,1,2-Trichlorotrifluoroethane  
 Concen: 0.338 ug/l  
 RT: 2.331 min Scan# 204  
 Delta R.T. -0.006 min  
 Lab File: VX048774.D  
 Acq: 09 Dec 2025 11:45

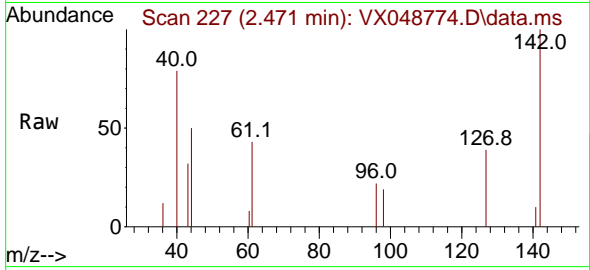
Tgt Ion: 101 Resp: 520  
 Ion Ratio Lower Upper  
 101 100  
 85 9.2 34.2 51.2#  
 151 0.0 60.2 90.4#



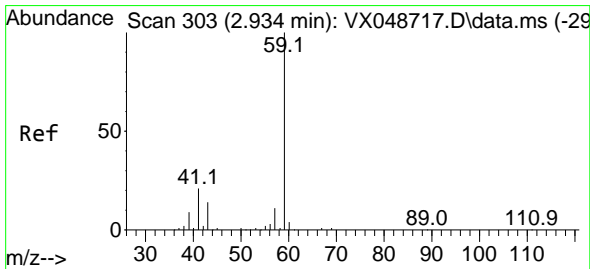
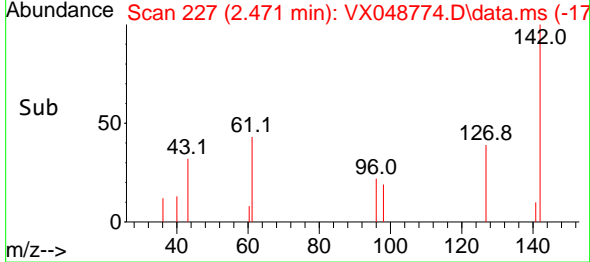
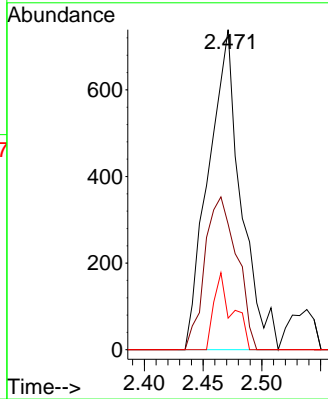


#10  
Methyl Iodide  
Concen: 0.650 ug/l  
RT: 2.471 min Scan# 21  
Delta R.T. 0.012 min  
Lab File: VX048774.D  
Acq: 09 Dec 2025 11:45

Instrument : MSVOA\_X  
ClientSampleId : OWBR-05-135-120525

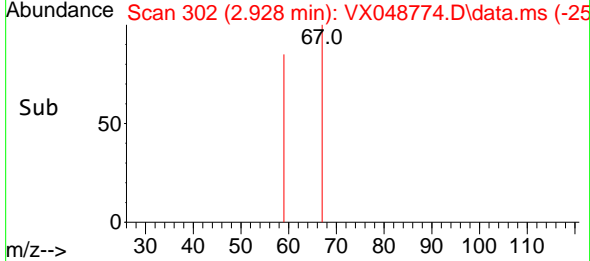
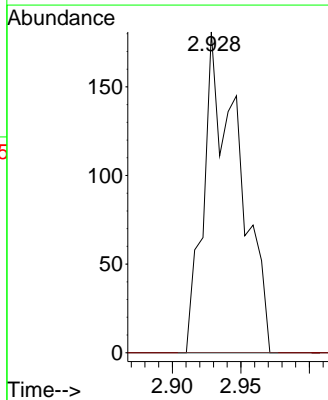
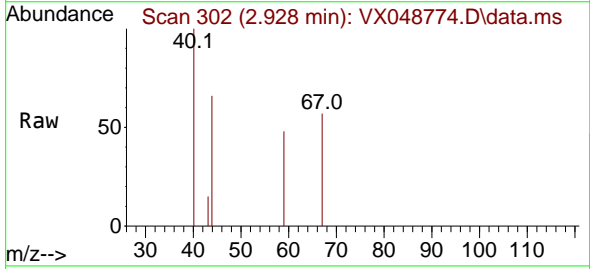


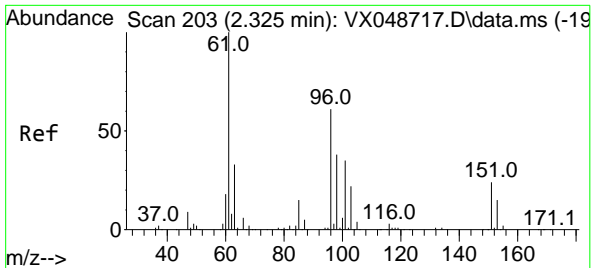
Tgt Ion:142 Resp: 1423  
Ion Ratio Lower Upper  
142 100  
127 47.2 35.8 53.6  
141 13.8 11.1 16.7



#11  
Tert butyl alcohol  
Concen: 1.106 ug/l  
RT: 2.928 min Scan# 302  
Delta R.T. -0.006 min  
Lab File: VX048774.D  
Acq: 09 Dec 2025 11:45

Tgt Ion: 59 Resp: 324  
Ion Ratio Lower Upper  
59 100  
57 0.0 8.1 12.1#



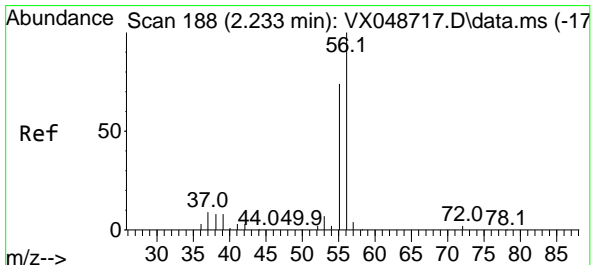
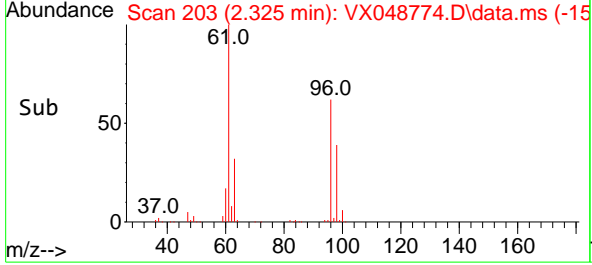
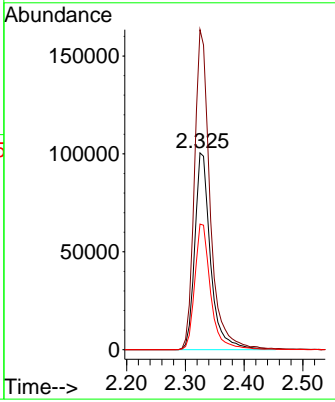
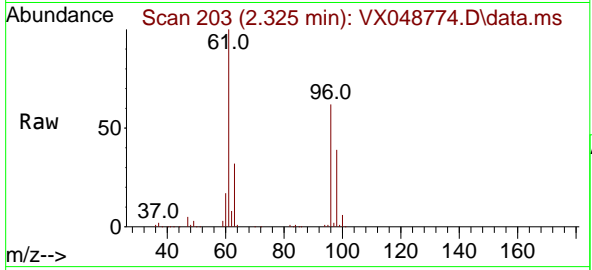


#12  
 1,1-Dichloroethene  
 Concen: 119.596 ug/l  
 RT: 2.325 min Scan# 203  
 Delta R.T. 0.000 min  
 Lab File: VX048774.D  
 Acq: 09 Dec 2025 11:45

Instrument : MSVOA\_X  
 ClientSampleId : OWBR-05-135-120525

Tgt Ion: 96 Resp: 187750

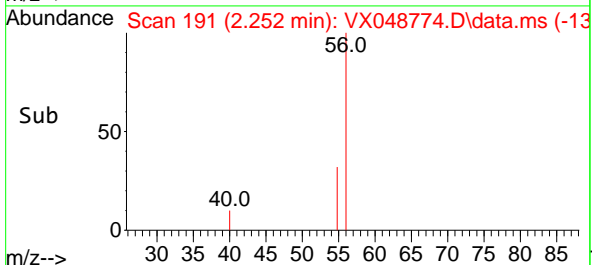
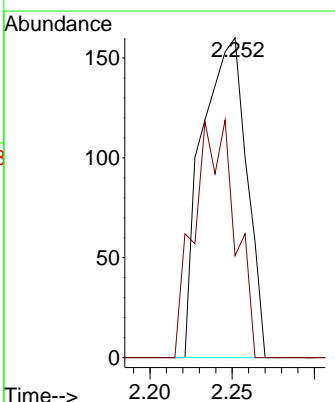
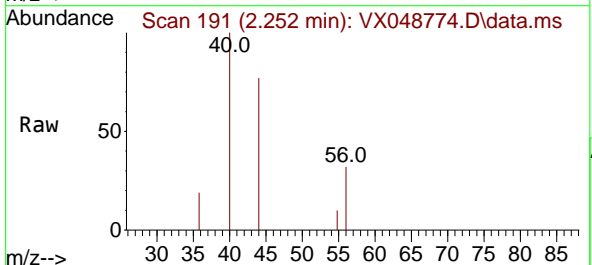
| Ion | Ratio | Lower | Upper |
|-----|-------|-------|-------|
| 96  | 100   |       |       |
| 61  | 162.5 | 130.7 | 196.1 |
| 98  | 63.8  | 49.8  | 74.8  |



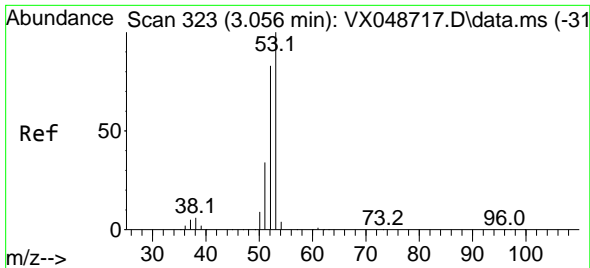
#13  
 Acrolein  
 Concen: 41.073 ug/l  
 RT: 2.252 min Scan# 191  
 Delta R.T. 0.018 min  
 Lab File: VX048774.D  
 Acq: 09 Dec 2025 11:45

Tgt Ion: 56 Resp: 302

| Ion | Ratio | Lower | Upper |
|-----|-------|-------|-------|
| 56  | 100   |       |       |
| 55  | 67.9  | 55.8  | 83.6  |

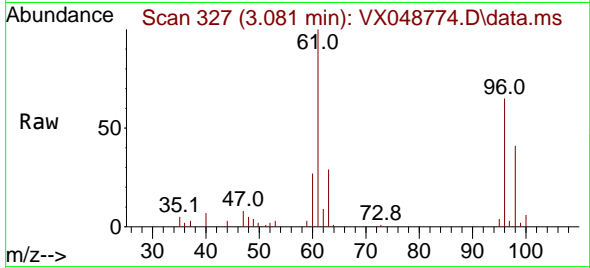






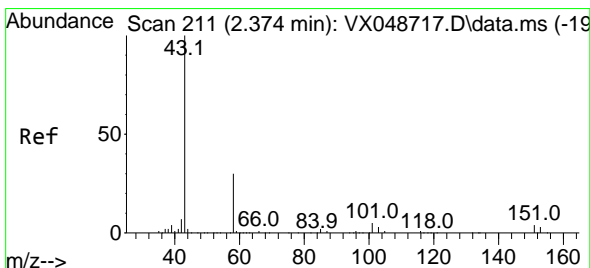
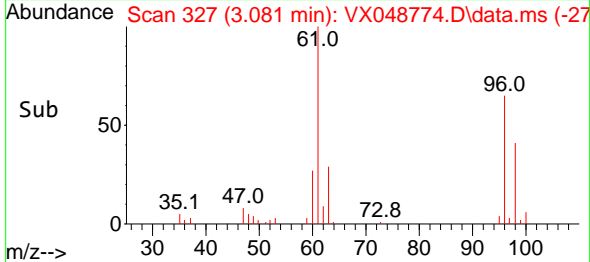
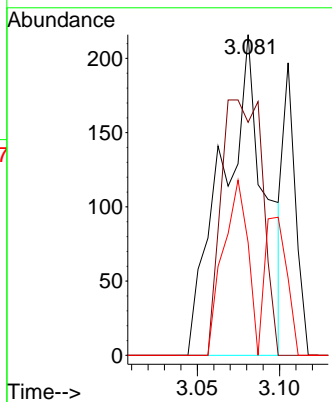
#15  
 Acrylonitrile  
 Concen: 0.425 ug/l  
 RT: 3.081 min Scan# 31  
 Delta R.T. 0.024 min  
 Lab File: VX048774.D  
 Acq: 09 Dec 2025 11:45

Instrument : MSVOA\_X  
 ClientSampleId : OWBR-05-135-120525



Tgt Ion: 53 Resp: 388

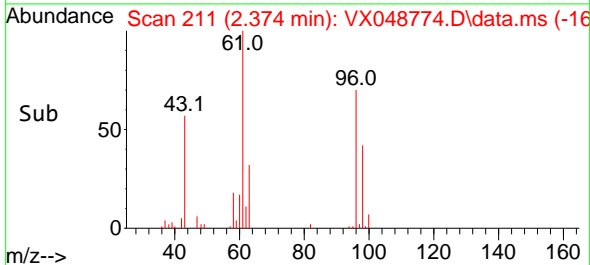
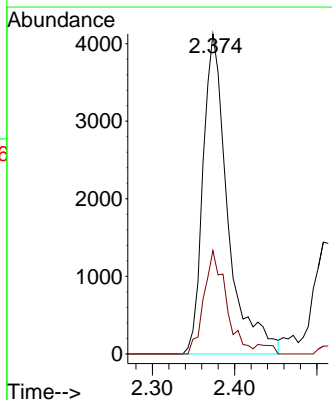
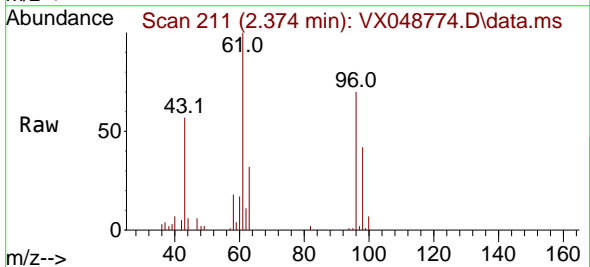
| Ion | Ratio | Lower | Upper |
|-----|-------|-------|-------|
| 53  | 100   |       |       |
| 52  | 77.3  | 66.3  | 99.5  |
| 51  | 31.7  | 28.7  | 43.1  |

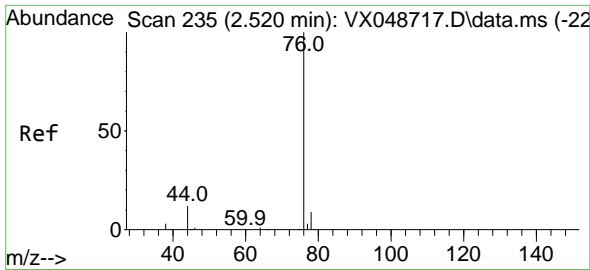


#16  
 Acetone  
 Concen: 12.457 ug/l  
 RT: 2.374 min Scan# 211  
 Delta R.T. 0.000 min  
 Lab File: VX048774.D  
 Acq: 09 Dec 2025 11:45

Tgt Ion: 43 Resp: 8653

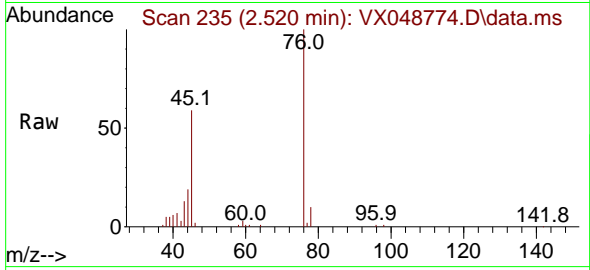
| Ion | Ratio | Lower | Upper |
|-----|-------|-------|-------|
| 43  | 100   |       |       |
| 58  | 32.3  | 25.0  | 37.4  |



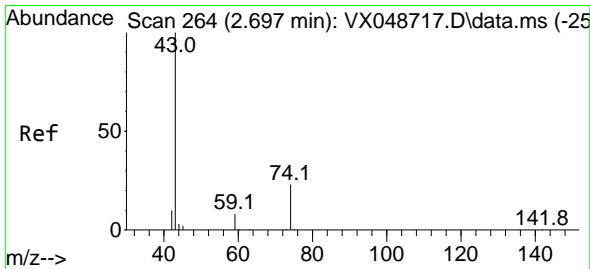
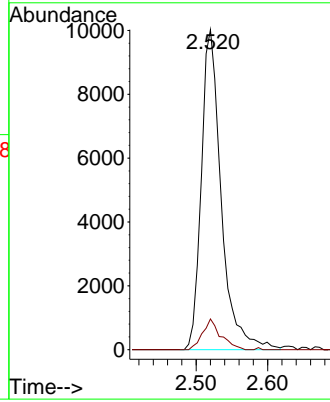
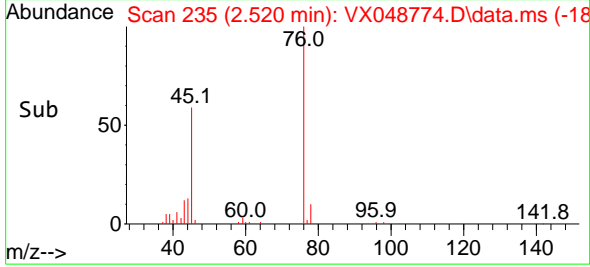


#17  
 Carbon Disulfide  
 Concen: 4.251 ug/l  
 RT: 2.520 min Scan# 21  
 Delta R.T. 0.000 min  
 Lab File: VX048774.D  
 Acq: 09 Dec 2025 11:45

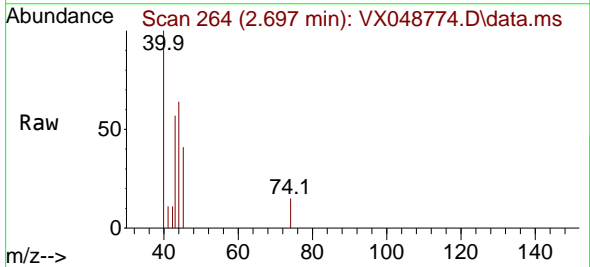
Instrument : MSVOA\_X  
 ClientSampleId : OWBR-05-135-120525



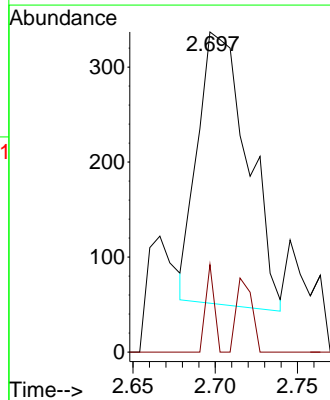
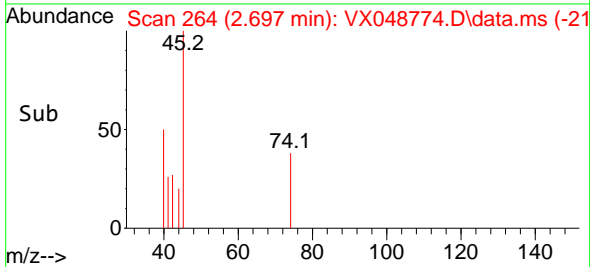
Tgt Ion: 76 Resp: 19382  
 Ion Ratio Lower Upper  
 76 100  
 78 9.6 7.4 11.2

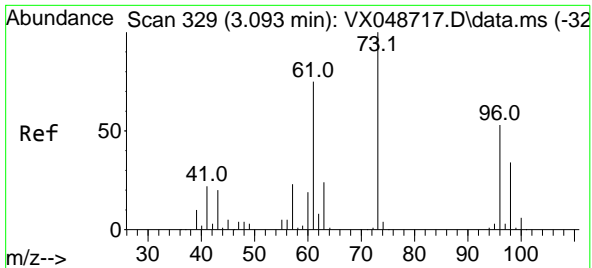


#18  
 Methyl Acetate  
 Concen: 0.309 ug/l  
 RT: 2.697 min Scan# 264  
 Delta R.T. 0.000 min  
 Lab File: VX048774.D  
 Acq: 09 Dec 2025 11:45



Tgt Ion: 43 Resp: 603  
 Ion Ratio Lower Upper  
 43 100  
 74 5.6 19.2 28.8#



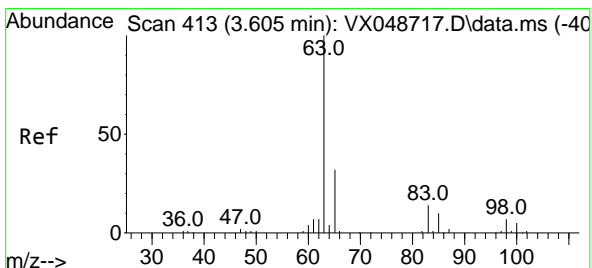
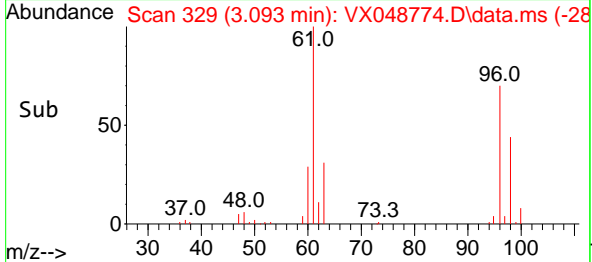
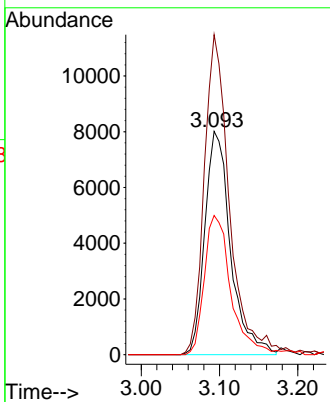
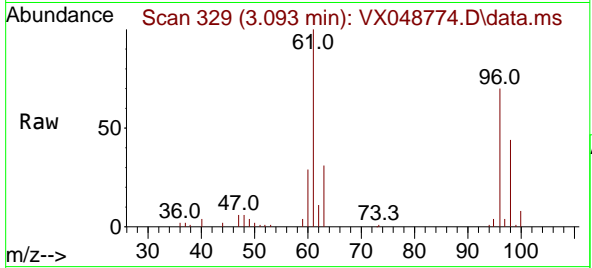


#21  
 trans-1,2-Dichloroethene  
 Concen: 11.411 ug/l  
 RT: 3.093 min Scan# 311  
 Delta R.T. 0.000 min  
 Lab File: VX048774.D  
 Acq: 09 Dec 2025 11:45

Instrument : MSVOA\_X  
 ClientSampleId : OWBR-05-135-120525

Tgt Ion: 96 Resp: 18284

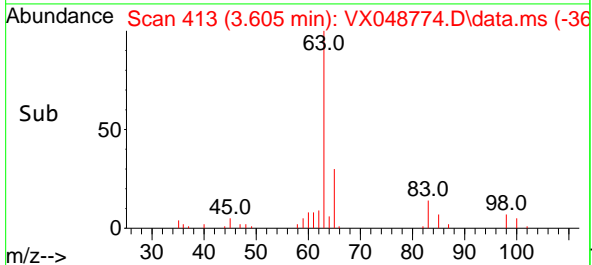
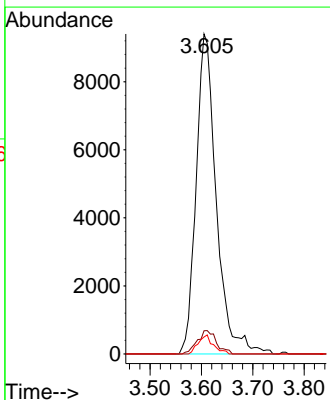
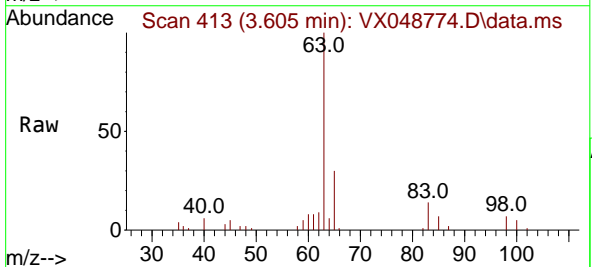
| Ion | Ratio | Lower | Upper |
|-----|-------|-------|-------|
| 96  | 100   |       |       |
| 61  | 143.3 | 112.8 | 169.2 |
| 98  | 62.4  | 51.0  | 76.4  |

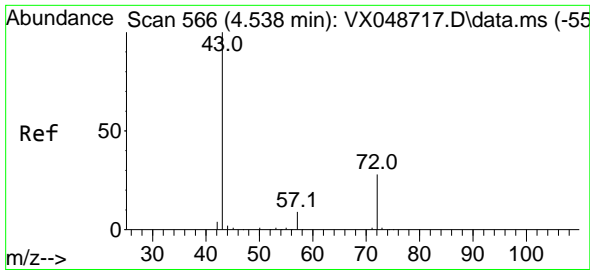


#24  
 1,1-Dichloroethane  
 Concen: 9.344 ug/l  
 RT: 3.605 min Scan# 413  
 Delta R.T. 0.000 min  
 Lab File: VX048774.D  
 Acq: 09 Dec 2025 11:45

Tgt Ion: 63 Resp: 25666

| Ion | Ratio | Lower | Upper |
|-----|-------|-------|-------|
| 63  | 100   |       |       |
| 98  | 7.2   | 3.5   | 10.6  |
| 100 | 5.3   | 2.5   | 7.4   |

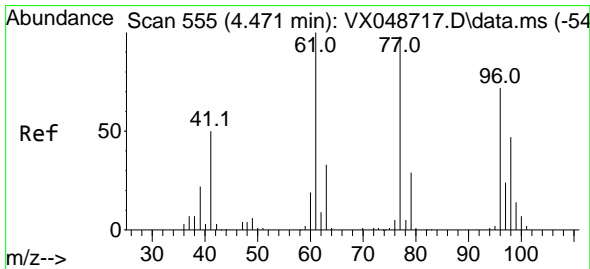
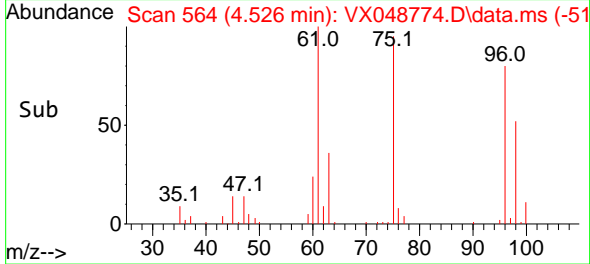
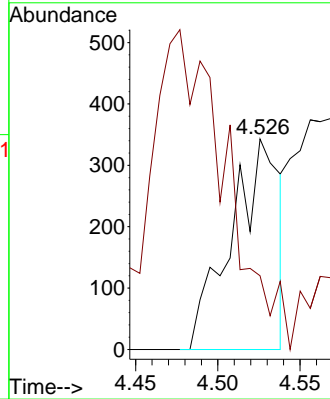
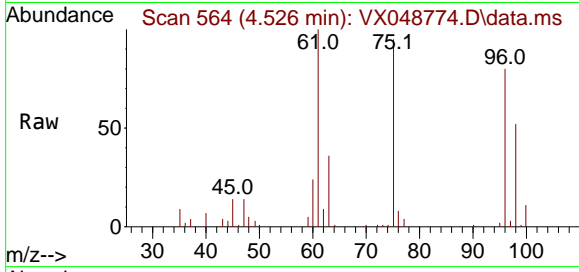




#25  
 2-Butanone  
 Concen: 0.682 ug/l  
 RT: 4.526 min Scan# 564  
 Delta R.T. -0.012 min  
 Lab File: VX048774.D  
 Acq: 09 Dec 2025 11:45

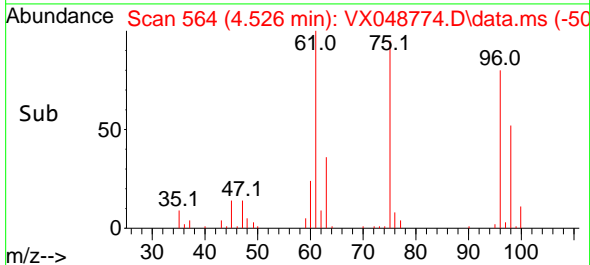
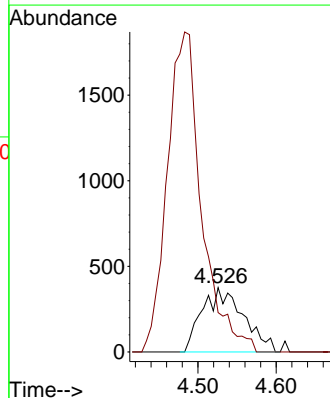
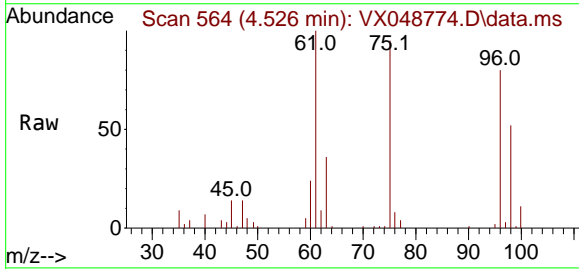
Instrument : MSVOA\_X  
 ClientSampleId : OWBR-05-135-120525

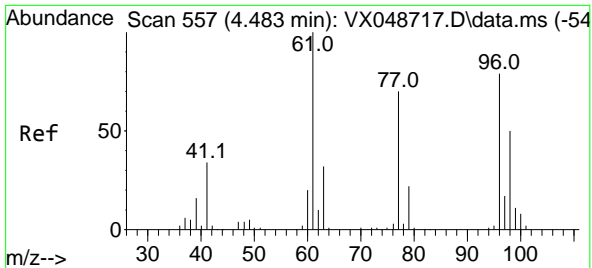
Tgt Ion: 43 Resp: 699  
 Ion Ratio Lower Upper  
 43 100  
 72 2.6 22.6 34.0#



#26  
 2,2-Dichloropropane  
 Concen: 0.562 ug/l  
 RT: 4.526 min Scan# 564  
 Delta R.T. 0.055 min  
 Lab File: VX048774.D  
 Acq: 09 Dec 2025 11:45

Tgt Ion: 77 Resp: 1367  
 Ion Ratio Lower Upper  
 77 100  
 97 0.0 11.6 34.8#



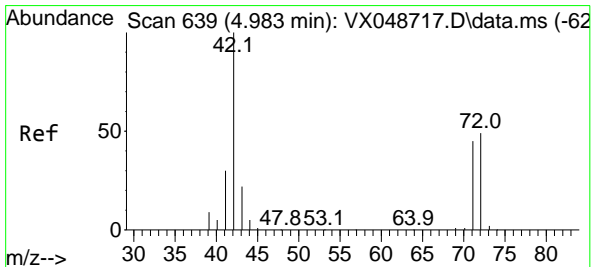
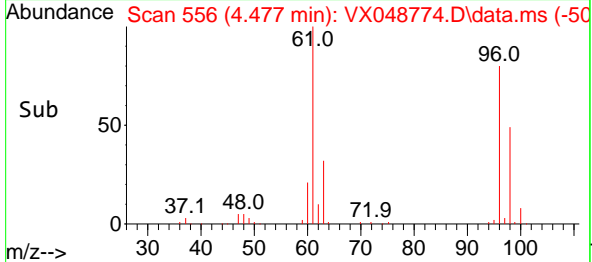
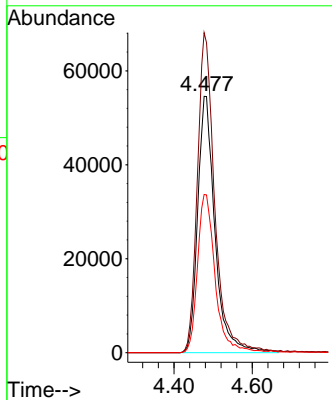
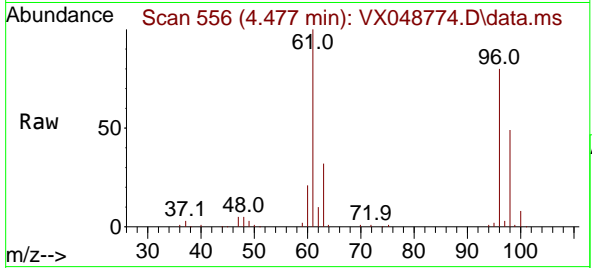


#27  
 cis-1,2-Dichloroethene  
 Concen: 92.623 ug/l  
 RT: 4.477 min Scan# 511  
 Delta R.T. -0.006 min  
 Lab File: VX048774.D  
 Acq: 09 Dec 2025 11:45

Instrument : MSVOA\_X  
 ClientSampleId : OWBR-05-135-120525

Tgt Ion: 96 Resp: 167466

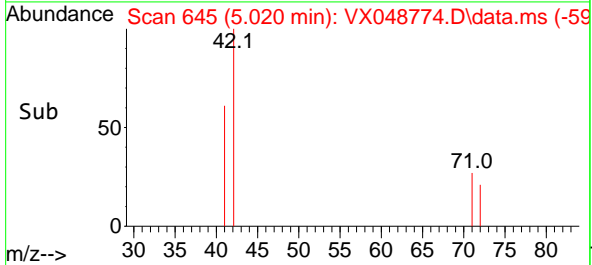
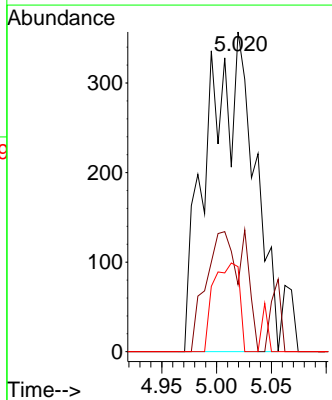
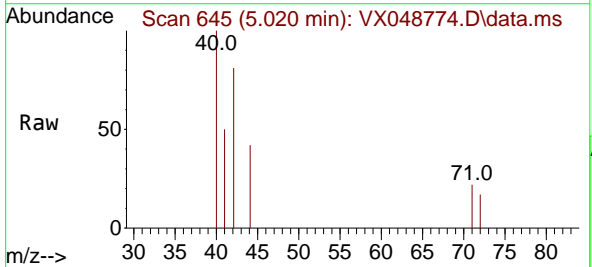
| Ion | Ratio | Lower | Upper |
|-----|-------|-------|-------|
| 96  | 100   |       |       |
| 61  | 125.7 | 0.0   | 271.0 |
| 98  | 63.1  | 0.0   | 130.2 |

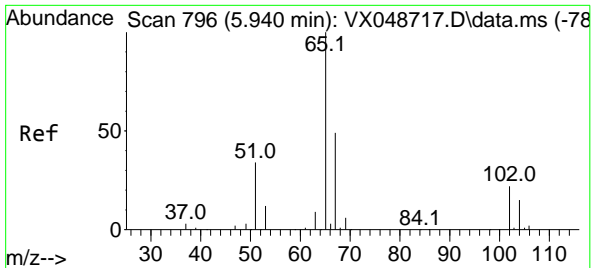


#29  
 Tetrahydrofuran  
 Concen: 1.360 ug/l  
 RT: 5.020 min Scan# 645  
 Delta R.T. 0.037 min  
 Lab File: VX048774.D  
 Acq: 09 Dec 2025 11:45

Tgt Ion: 42 Resp: 1065

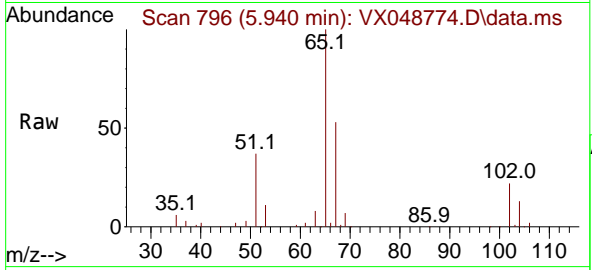
| Ion | Ratio | Lower | Upper |
|-----|-------|-------|-------|
| 42  | 100   |       |       |
| 72  | 30.1  | 39.4  | 59.2# |
| 71  | 15.2  | 35.8  | 53.6# |



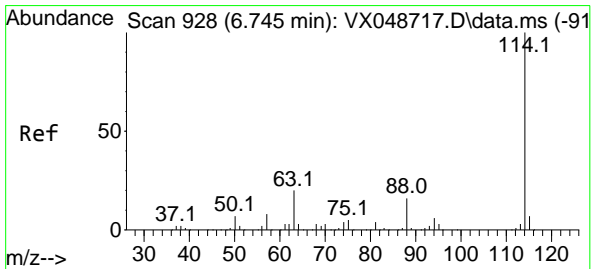
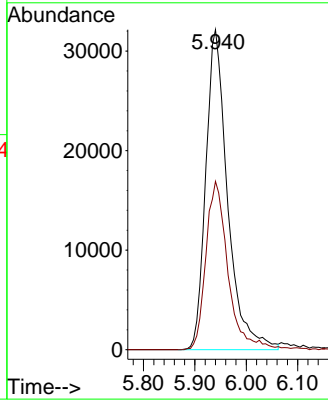
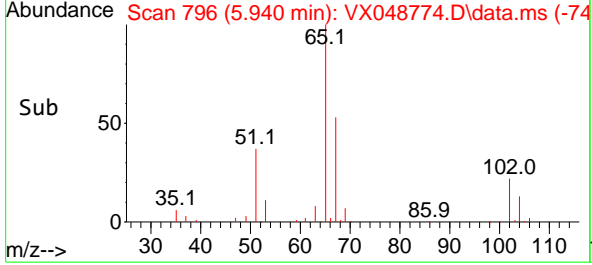


#33  
 1,2-Dichloroethane-d4  
 Concen: 52.207 ug/l  
 RT: 5.940 min Scan# 796  
 Delta R.T. 0.000 min  
 Lab File: VX048774.D  
 Acq: 09 Dec 2025 11:45

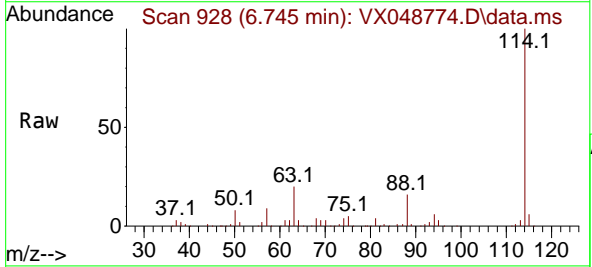
Instrument : MSVOA\_X  
 ClientSampleId : OWBR-05-135-120525



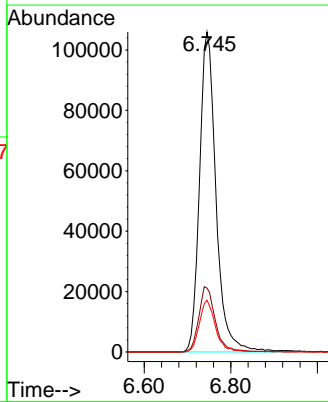
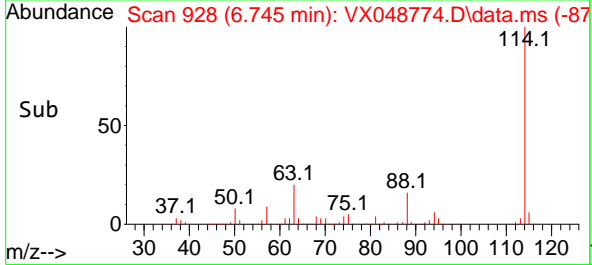
Tgt Ion: 65 Resp: 94731  
 Ion Ratio Lower Upper  
 65 100  
 67 53.3 0.0 107.4

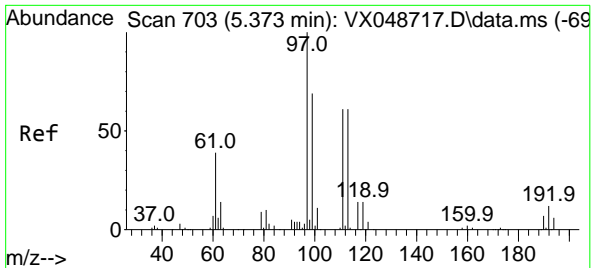


#34  
 1,4-Difluorobenzene  
 Concen: 50.000 ug/l  
 RT: 6.745 min Scan# 928  
 Delta R.T. 0.000 min  
 Lab File: VX048774.D  
 Acq: 09 Dec 2025 11:45



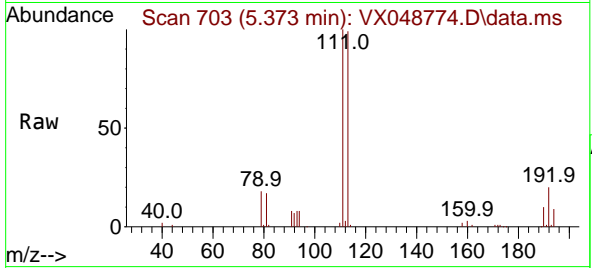
Tgt Ion: 114 Resp: 279762  
 Ion Ratio Lower Upper  
 114 100  
 63 19.9 0.0 39.0  
 88 16.2 0.0 31.8



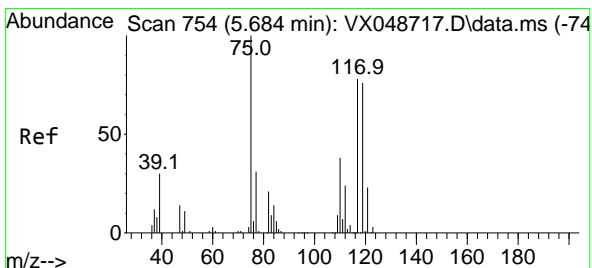
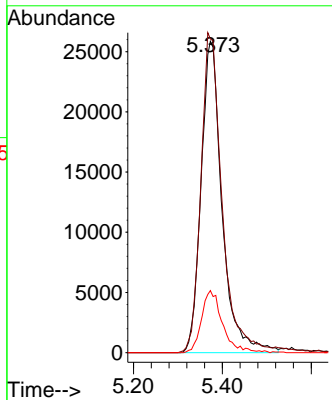
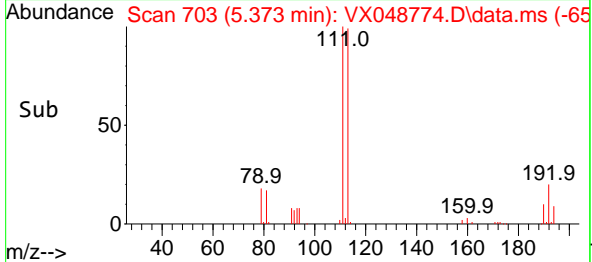


#35  
 Dibromofluoromethane  
 Concen: 44.117 ug/l  
 RT: 5.373 min Scan# 703  
 Delta R.T. 0.000 min  
 Lab File: VX048774.D  
 Acq: 09 Dec 2025 11:45

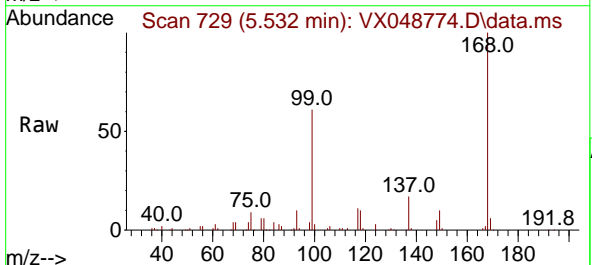
Instrument : MSVOA\_X  
 ClientSampleId : OWBR-05-135-120525



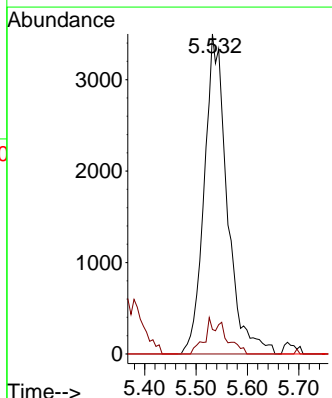
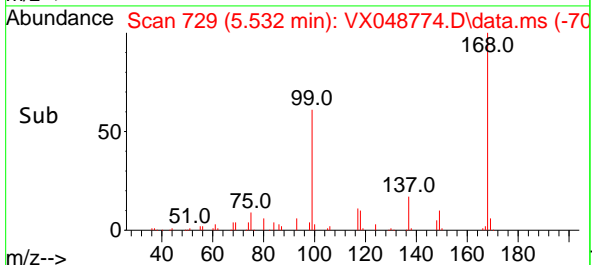
Tgt Ion:113 Resp: 84981  
 Ion Ratio Lower Upper  
 113 100  
 111 103.2 79.5 119.3  
 192 20.0 16.1 24.1

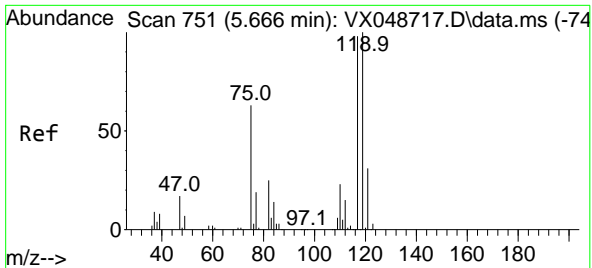


#36  
 1,1-Dichloropropene  
 Concen: 4.119 ug/l  
 RT: 5.532 min Scan# 729  
 Delta R.T. -0.152 min  
 Lab File: VX048774.D  
 Acq: 09 Dec 2025 11:45



Tgt Ion: 75 Resp: 10867  
 Ion Ratio Lower Upper  
 75 100  
 110 5.0 18.6 55.8#  
 77 0.0 25.3 37.9#

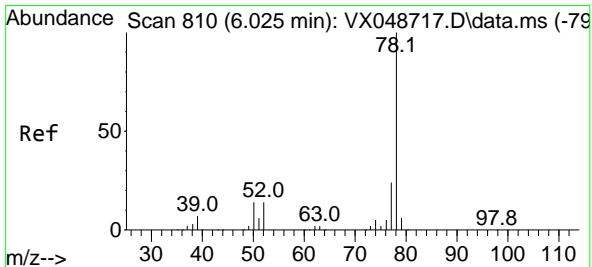
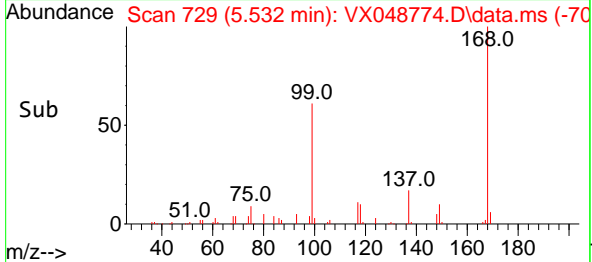
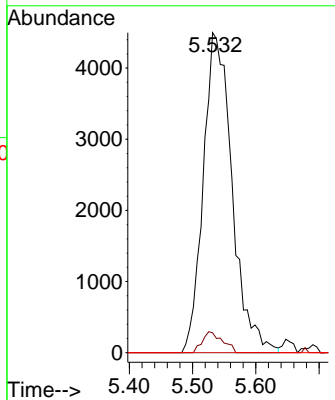
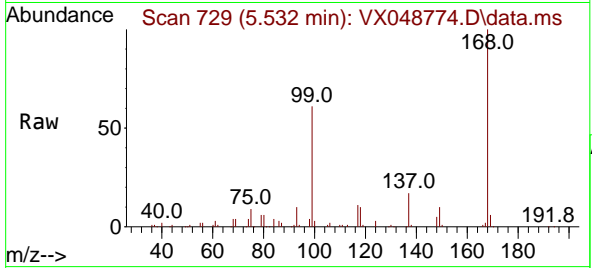




#38  
 Carbon Tetrachloride  
 Concen: 4.761 ug/l  
 RT: 5.532 min Scan# 711  
 Delta R.T. -0.134 min  
 Lab File: VX048774.D  
 Acq: 09 Dec 2025 11:45

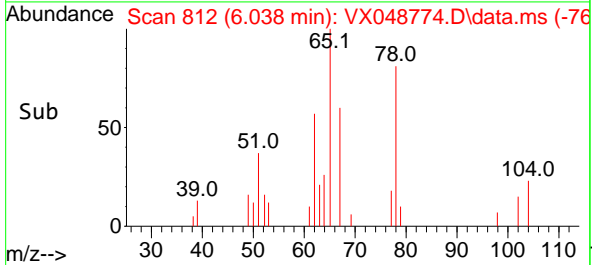
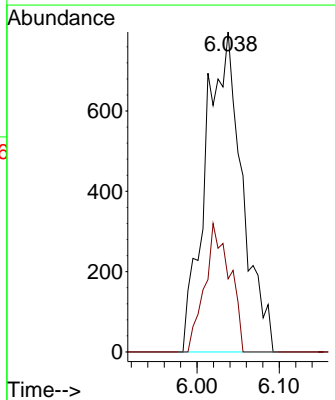
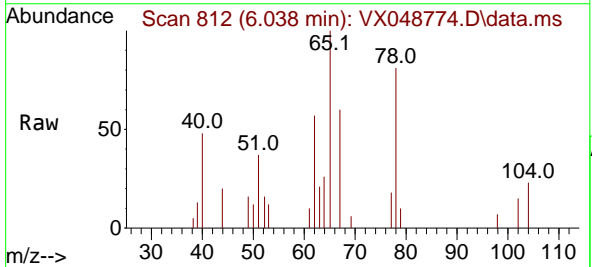
Instrument : MSVOA\_X  
 ClientSampleId : OWBR-05-135-120525

| Tgt Ion | Resp  | Lower | Upper  |
|---------|-------|-------|--------|
| 117     | 14227 |       |        |
| 119     | 6.2   | 80.5  | 120.7# |
| 121     | 0.0   | 25.4  | 38.0#  |

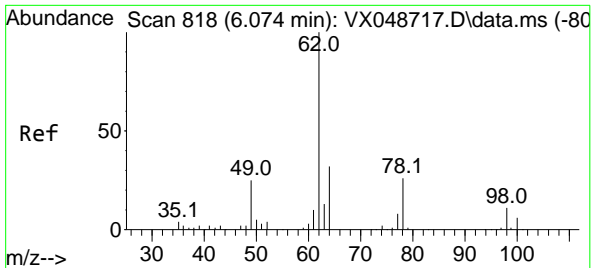


#40  
 Benzene  
 Concen: 0.315 ug/l  
 RT: 6.038 min Scan# 812  
 Delta R.T. 0.012 min  
 Lab File: VX048774.D  
 Acq: 09 Dec 2025 11:45

| Tgt Ion | Resp | Lower | Upper |
|---------|------|-------|-------|
| 78      | 2464 |       |       |
| 77      | 22.8 | 18.8  | 28.2  |



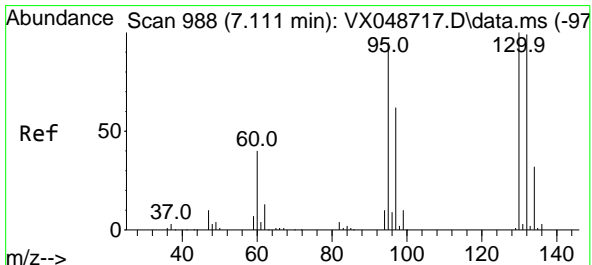
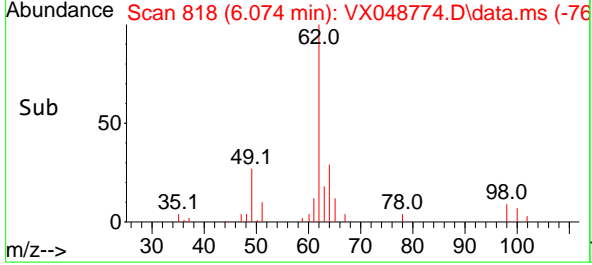
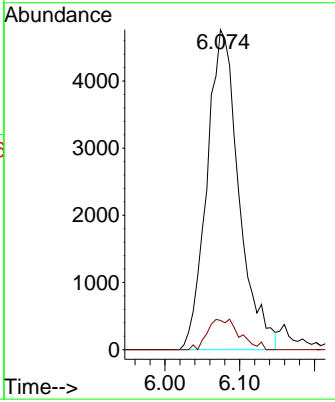
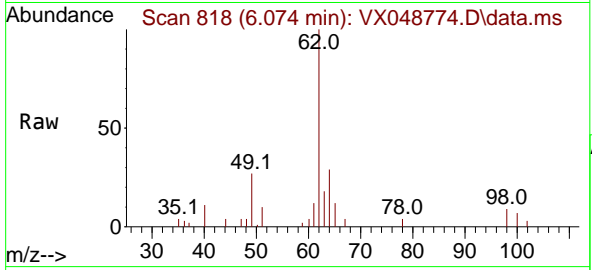




#42  
 1,2-Dichloroethane  
 Concen: 5.133 ug/l  
 RT: 6.074 min Scan# 818  
 Delta R.T. 0.000 min  
 Lab File: VX048774.D  
 Acq: 09 Dec 2025 11:45

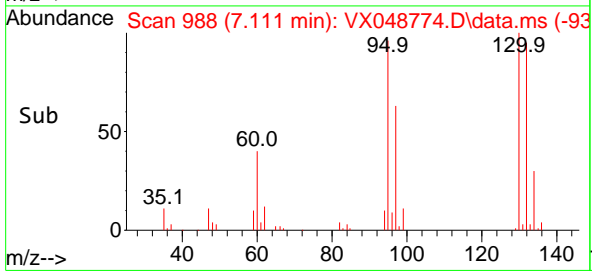
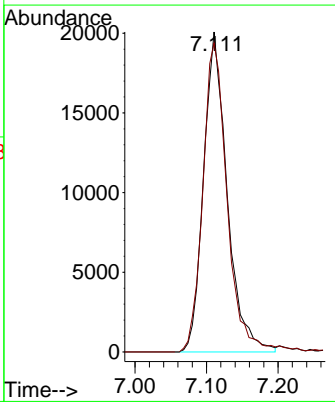
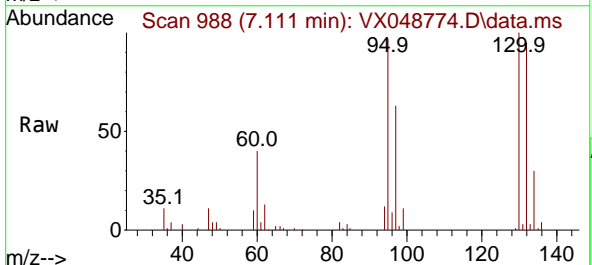
Instrument : MSVOA\_X  
 ClientSampleId : OWBR-05-135-120525

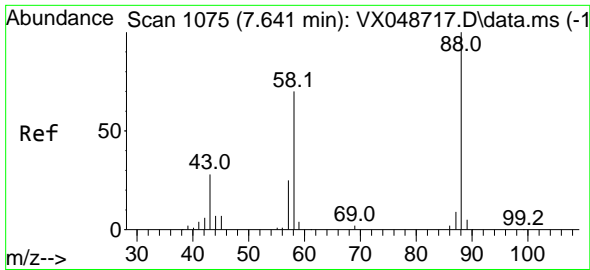
Tgt Ion: 62 Resp: 14210  
 Ion Ratio Lower Upper  
 62 100  
 98 9.5 0.0 20.2



#44  
 Trichloroethene  
 Concen: 22.527 ug/l  
 RT: 7.111 min Scan# 988  
 Delta R.T. 0.000 min  
 Lab File: VX048774.D  
 Acq: 09 Dec 2025 11:45

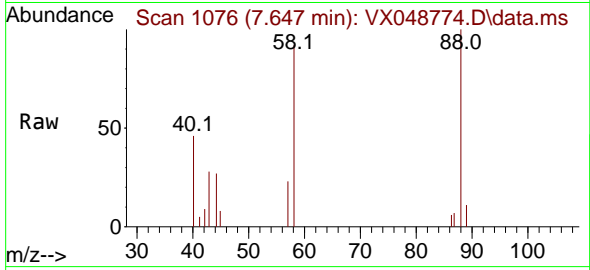
Tgt Ion:130 Resp: 45972  
 Ion Ratio Lower Upper  
 130 100  
 95 96.5 0.0 189.6



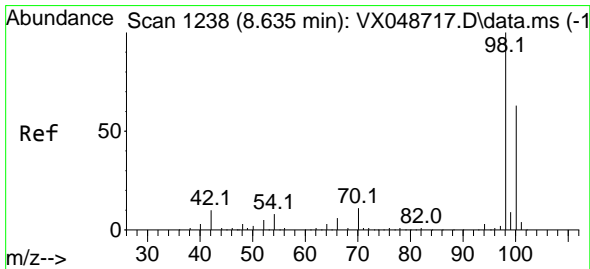
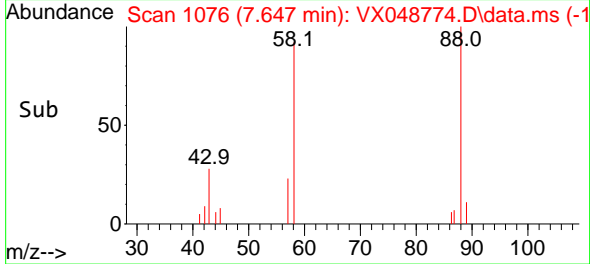
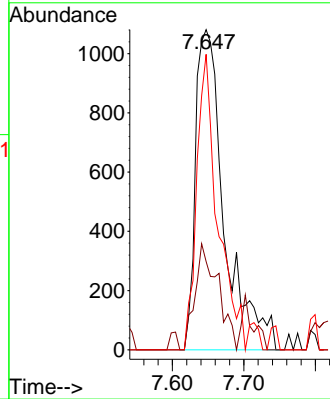


#49  
 1,4-Dioxane  
 Concen: 91.627 ug/l  
 RT: 7.647 min Scan# 1076  
 Delta R.T. 0.006 min  
 Lab File: VX048774.D  
 Acq: 09 Dec 2025 11:45

Instrument : MSVOA\_X  
 ClientSampleId : OWBR-05-135-120525

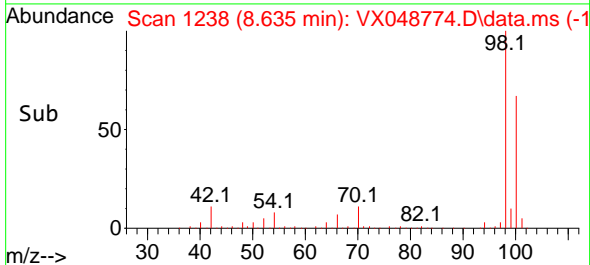
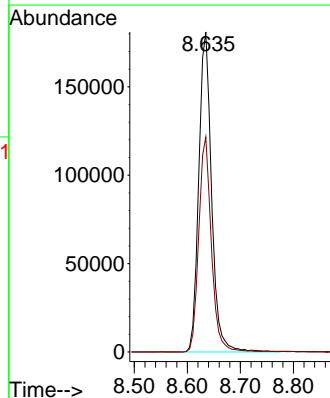
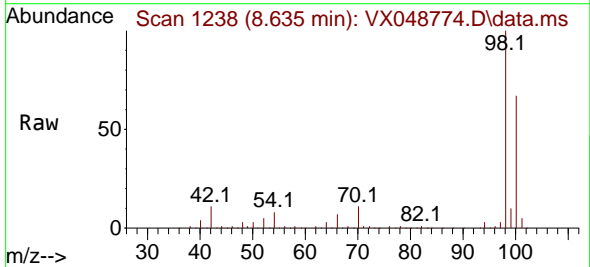


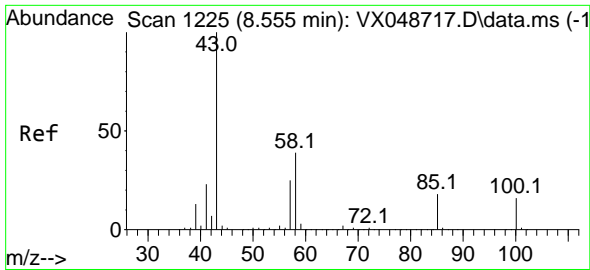
Tgt Ion: 88 Resp: 3026  
 Ion Ratio Lower Upper  
 88 100  
 43 26.4 28.6 43.0#  
 58 67.2 58.0 87.0



#50  
 Toluene-d8  
 Concen: 45.115 ug/l  
 RT: 8.635 min Scan# 1238  
 Delta R.T. 0.000 min  
 Lab File: VX048774.D  
 Acq: 09 Dec 2025 11:45

Tgt Ion: 98 Resp: 304625  
 Ion Ratio Lower Upper  
 98 100  
 100 66.1 53.4 80.0

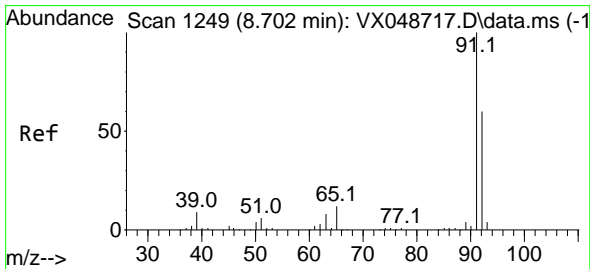
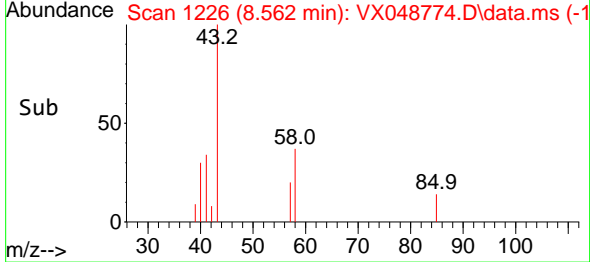
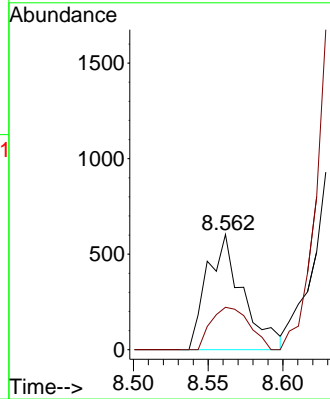
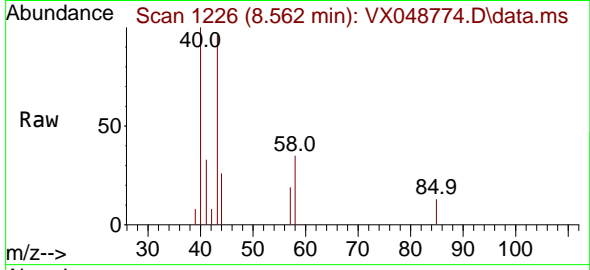




#51  
 4-Methyl-2-Pentanone  
 Concen: 0.339 ug/l  
 RT: 8.562 min Scan# 1226  
 Delta R.T. 0.006 min  
 Lab File: VX048774.D  
 Acq: 09 Dec 2025 11:45

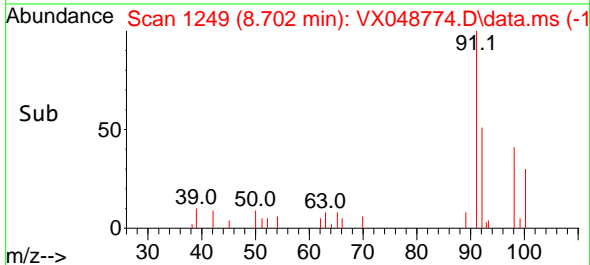
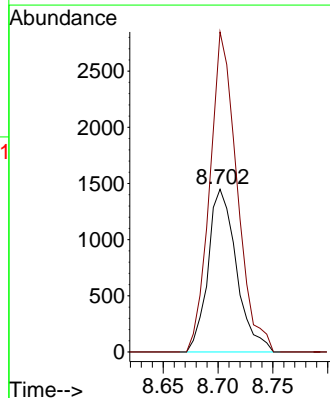
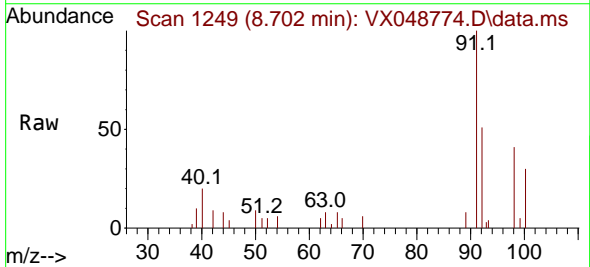
Instrument : MSVOA\_X  
 ClientSampleId : OWBR-05-135-120525

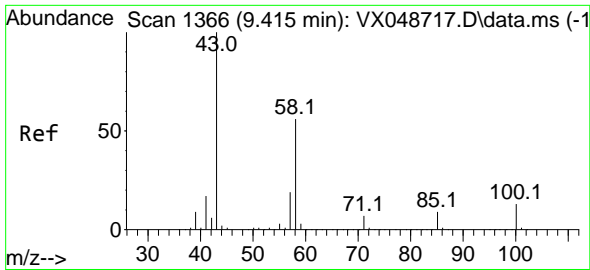
Tgt Ion: 43 Resp: 1005  
 Ion Ratio Lower Upper  
 43 100  
 58 39.6 32.2 48.4



#52  
 Toluene  
 Concen: 0.555 ug/l  
 RT: 8.702 min Scan# 1249  
 Delta R.T. 0.000 min  
 Lab File: VX048774.D  
 Acq: 09 Dec 2025 11:45

Tgt Ion: 92 Resp: 2616  
 Ion Ratio Lower Upper  
 92 100  
 91 188.1 136.3 204.5

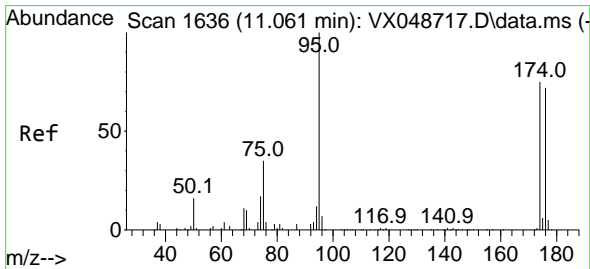
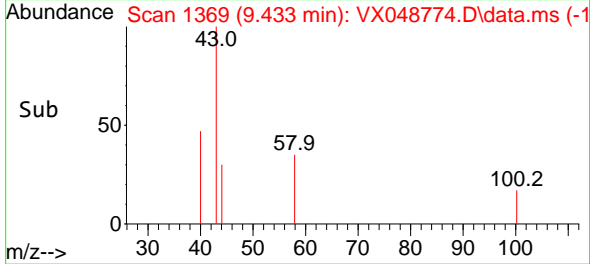
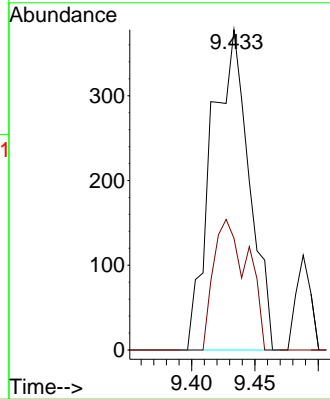
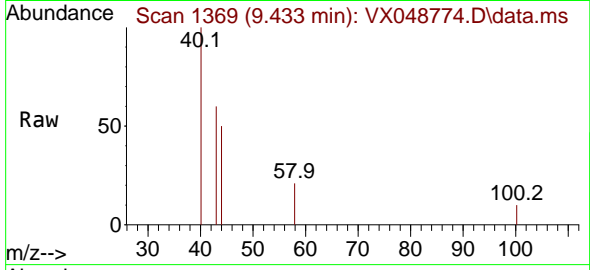




#59  
 2-Hexanone  
 Concen: 0.377 ug/l  
 RT: 9.433 min Scan# 1369  
 Delta R.T. 0.018 min  
 Lab File: VX048774.D  
 Acq: 09 Dec 2025 11:45

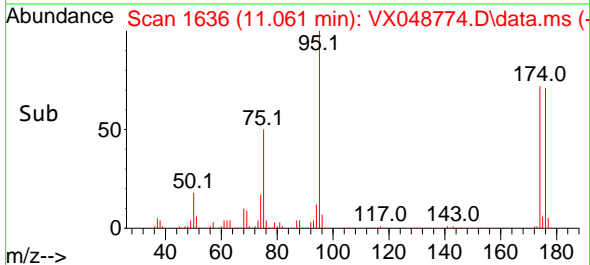
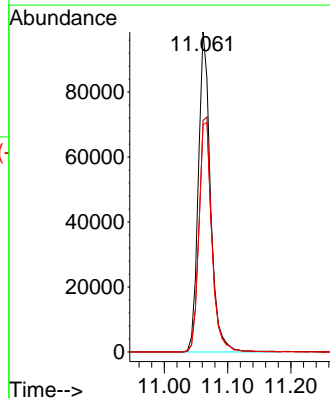
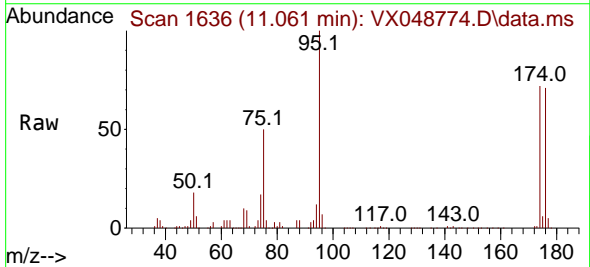
Instrument : MSVOA\_X  
 ClientSampleId : OWBR-05-135-120525

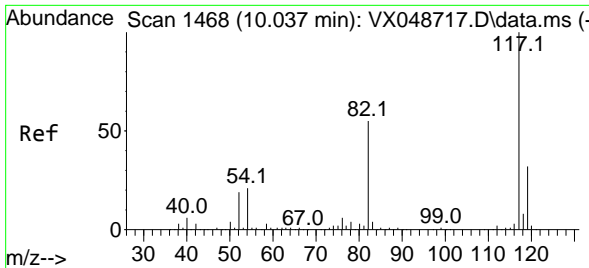
Tgt Ion: 43 Resp: 785  
 Ion Ratio Lower Upper  
 43 100  
 58 36.9 27.8 83.4



#62  
 4-Bromofluorobenzene  
 Concen: 56.437 ug/l  
 RT: 11.061 min Scan# 1636  
 Delta R.T. 0.000 min  
 Lab File: VX048774.D  
 Acq: 09 Dec 2025 11:45

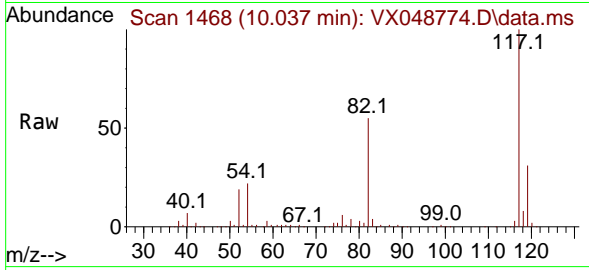
Tgt Ion: 95 Resp: 131405  
 Ion Ratio Lower Upper  
 95 100  
 174 78.1 0.0 157.8  
 176 76.7 0.0 154.0





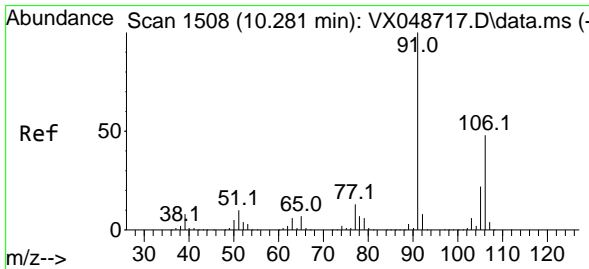
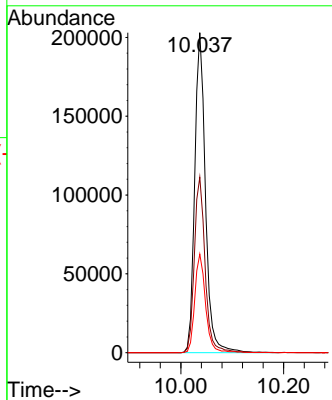
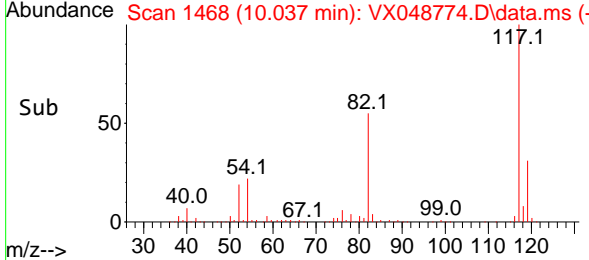
#63  
 Chlorobenzene-d5  
 Concen: 50.000 ug/l  
 RT: 10.037 min Scan# 14  
 Delta R.T. 0.000 min  
 Lab File: VX048774.D  
 Acq: 09 Dec 2025 11:45

Instrument : MSVOA\_X  
 ClientSampleId : OWBR-05-135-120525

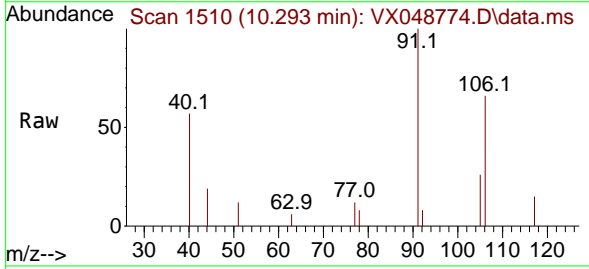


Tgt Ion:117 Resp: 295744

| Ion | Ratio | Lower | Upper |
|-----|-------|-------|-------|
| 117 | 100   |       |       |
| 82  | 54.8  | 44.1  | 66.1  |
| 119 | 30.8  | 25.2  | 37.8  |

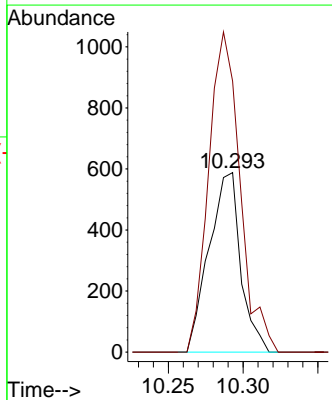
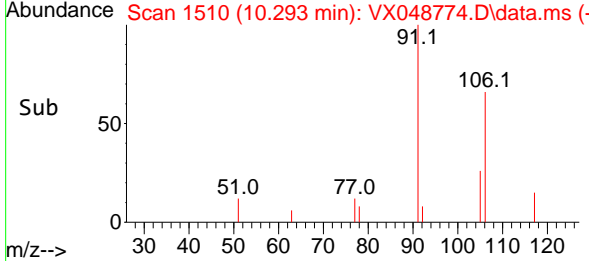


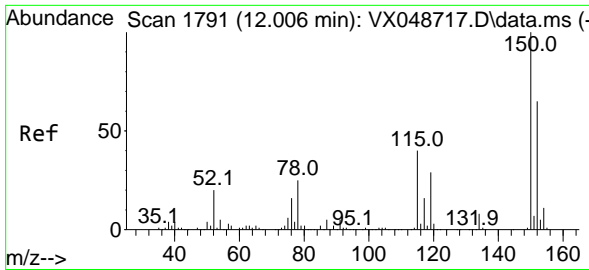
#68  
 m/p-Xylenes  
 Concen: 0.210 ug/l  
 RT: 10.293 min Scan# 1510  
 Delta R.T. 0.012 min  
 Lab File: VX048774.D  
 Acq: 09 Dec 2025 11:45



Tgt Ion:106 Resp: 865

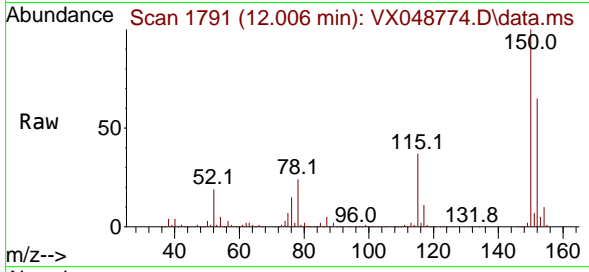
| Ion | Ratio | Lower | Upper |
|-----|-------|-------|-------|
| 106 | 100   |       |       |
| 91  | 177.1 | 164.2 | 246.4 |



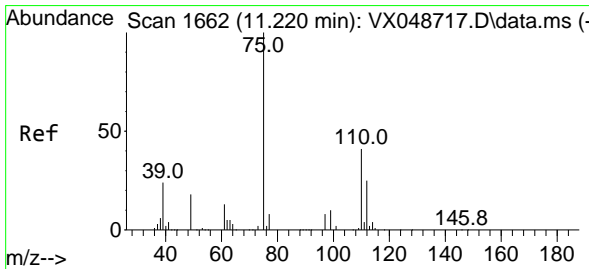
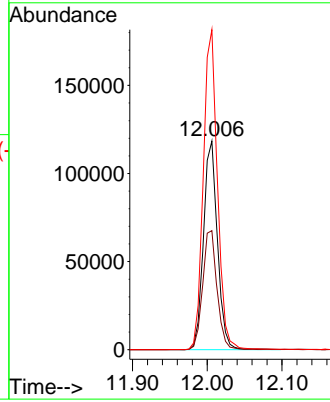
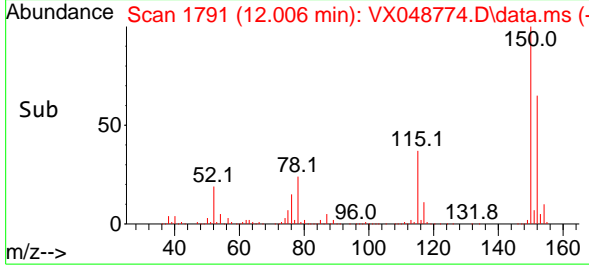


#72  
 1,4-Dichlorobenzene-d4  
 Concen: 50.000 ug/l  
 RT: 12.006 min Scan# 1  
 Delta R.T. 0.000 min  
 Lab File: VX048774.D  
 Acq: 09 Dec 2025 11:45

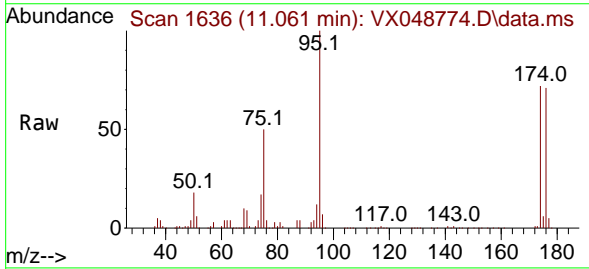
Instrument :  
 MSVOA\_X  
 ClientSampleId :  
 OWBR-05-135-120525



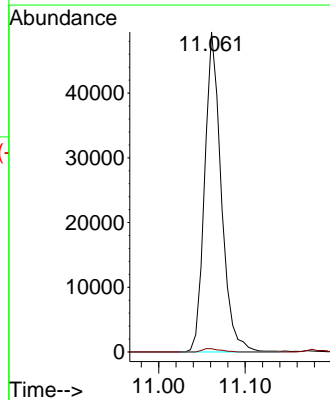
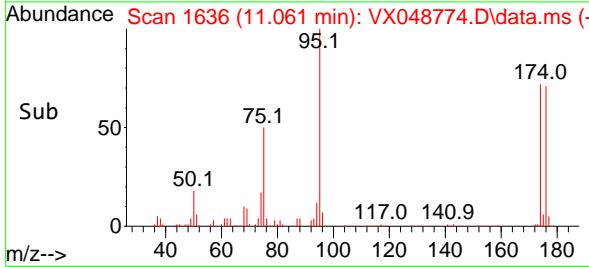
Tgt Ion:152 Resp: 153431  
 Ion Ratio Lower Upper  
 152 100  
 115 58.8 42.1 126.4  
 150 155.7 0.0 347.8

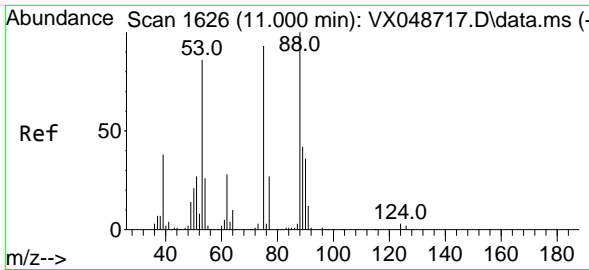


#76  
 1,2,3-Trichloropropane  
 Concen: 23.051 ug/l  
 RT: 11.061 min Scan# 1636  
 Delta R.T. -0.158 min  
 Lab File: VX048774.D  
 Acq: 09 Dec 2025 11:45



Tgt Ion: 75 Resp: 65872  
 Ion Ratio Lower Upper  
 75 100  
 77 1.1 24.3 73.0#



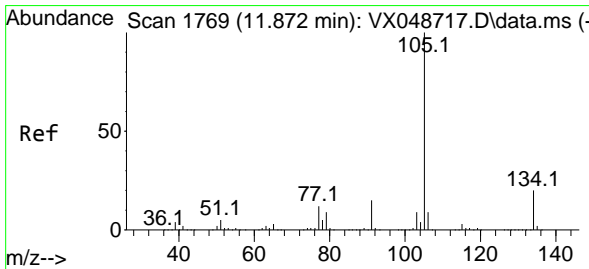
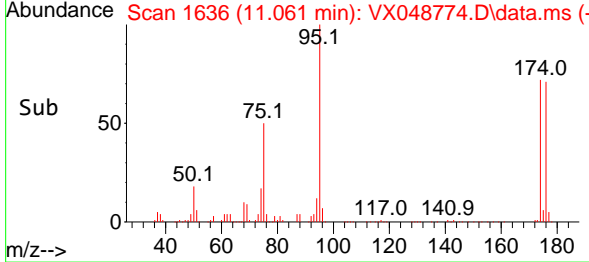
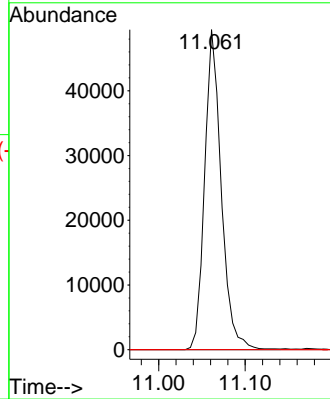
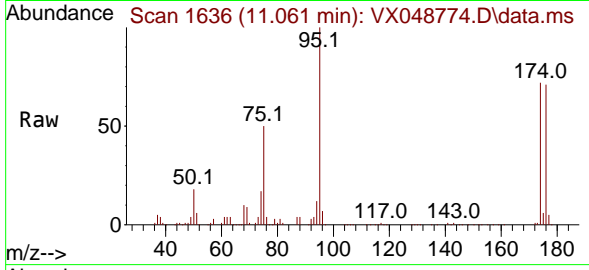


#81  
 trans-1,4-Dichloro-2-butene  
 Concen: 54.755 ug/l  
 RT: 11.061 min Scan# 11  
 Delta R.T. 0.061 min  
 Lab File: VX048774.D  
 Acq: 09 Dec 2025 11:45

Instrument : MSVOA\_X  
 ClientSampleId : OWBR-05-135-120525

Tgt Ion: 75 Resp: 65872

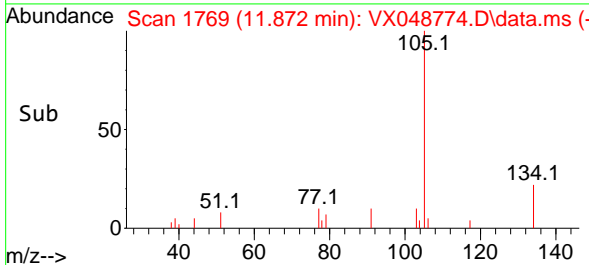
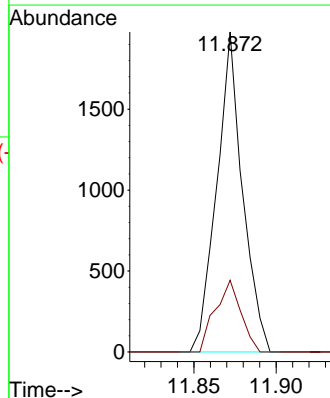
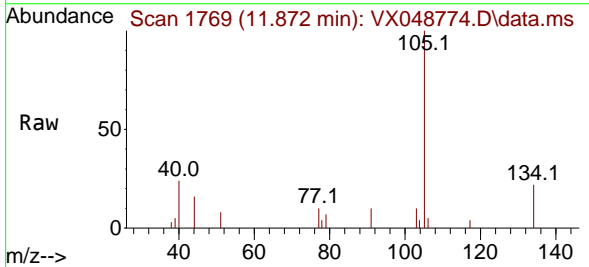
| Ion | Ratio | Lower | Upper  |
|-----|-------|-------|--------|
| 75  | 100   |       |        |
| 53  | 0.0   | 79.9  | 119.9# |
| 89  | 0.0   | 67.1  | 100.7# |

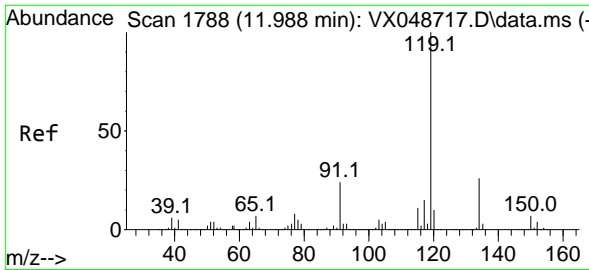


#85  
 sec-Butylbenzene  
 Concen: 0.201 ug/l  
 RT: 11.872 min Scan# 1769  
 Delta R.T. 0.000 min  
 Lab File: VX048774.D  
 Acq: 09 Dec 2025 11:45

Tgt Ion: 105 Resp: 2152

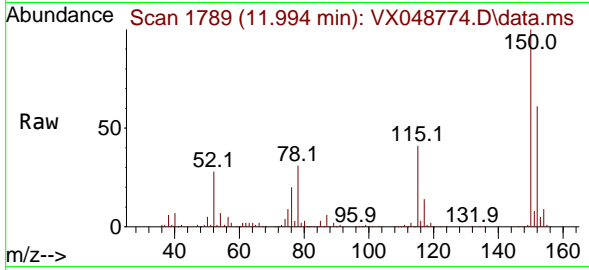
| Ion | Ratio | Lower | Upper |
|-----|-------|-------|-------|
| 105 | 100   |       |       |
| 134 | 22.4  | 9.8   | 29.5  |



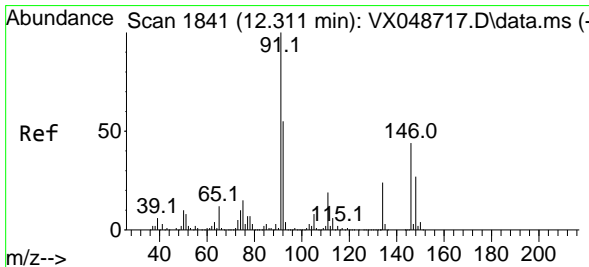
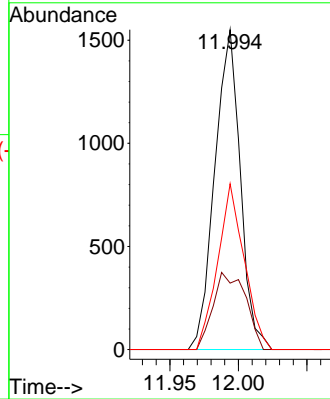
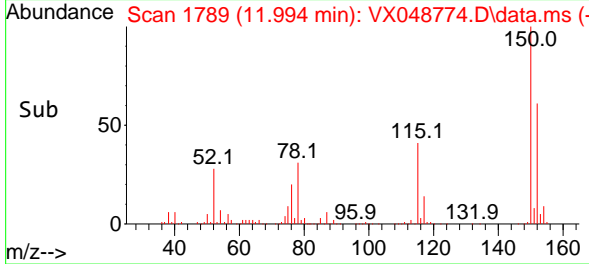


#86  
 p-Isopropyltoluene  
 Concen: 0.219 ug/l  
 RT: 11.994 min Scan# 11994  
 Delta R.T. 0.006 min  
 Lab File: VX048774.D  
 Acq: 09 Dec 2025 11:45

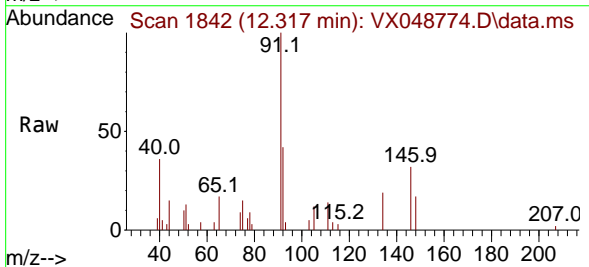
Instrument : MSVOA\_X  
 ClientSampleId : OWBR-05-135-120525



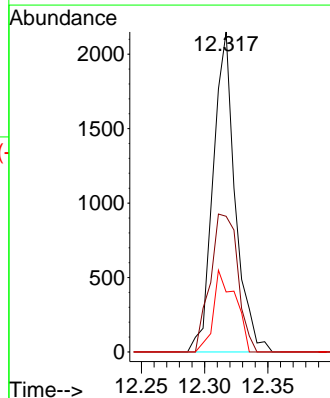
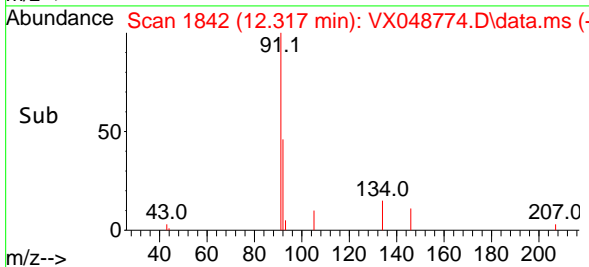
| Tgt Ion | Resp | Lower | Upper |
|---------|------|-------|-------|
| 119     | 100  |       |       |
| 134     | 30.7 | 13.1  | 39.3  |
| 91      | 53.9 | 11.8  | 35.4# |



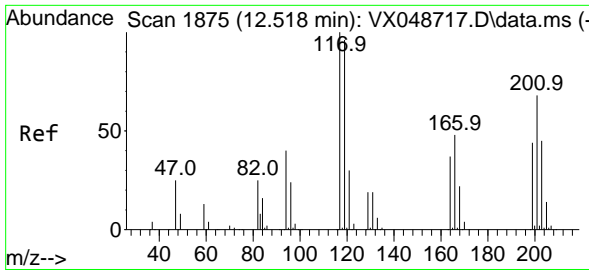
#89  
 n-Butylbenzene  
 Concen: 0.305 ug/l  
 RT: 12.317 min Scan# 1842  
 Delta R.T. 0.006 min  
 Lab File: VX048774.D  
 Acq: 09 Dec 2025 11:45



| Tgt Ion | Resp | Lower | Upper |
|---------|------|-------|-------|
| 91      | 100  |       |       |
| 92      | 53.5 | 27.1  | 81.3  |
| 134     | 25.4 | 12.9  | 38.6  |



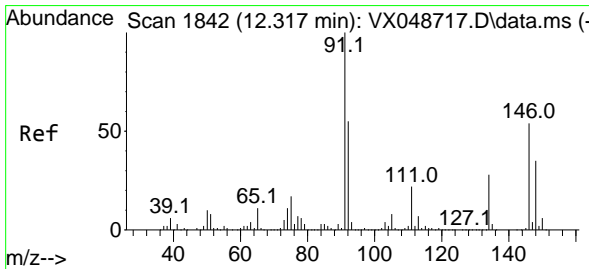
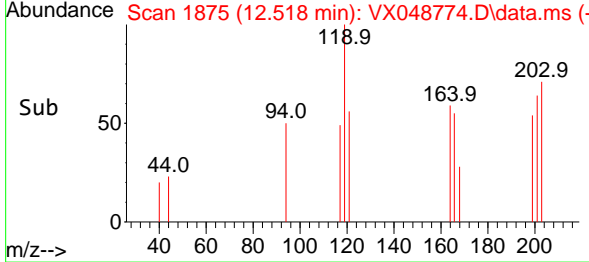
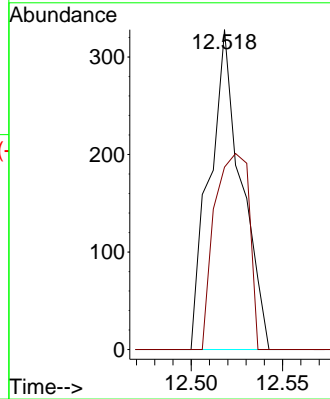
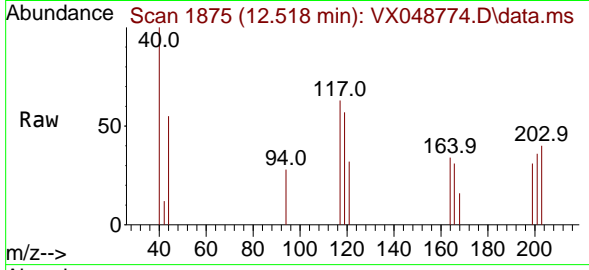




#90  
 Hexachloroethane  
 Concen: 0.213 ug/l  
 RT: 12.518 min Scan# 1875  
 Delta R.T. 0.000 min  
 Lab File: VX048774.D  
 Acq: 09 Dec 2025 11:45

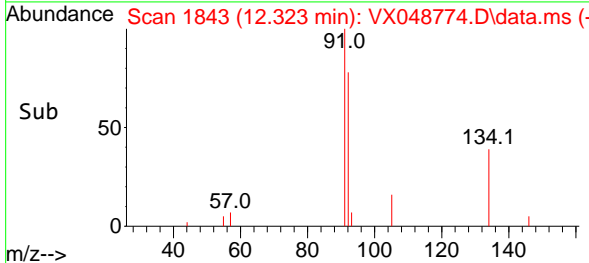
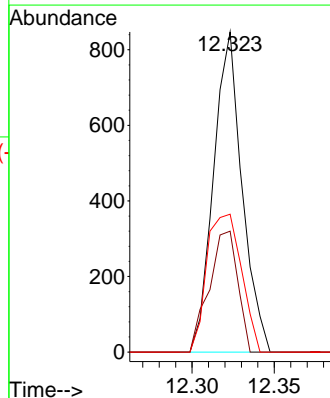
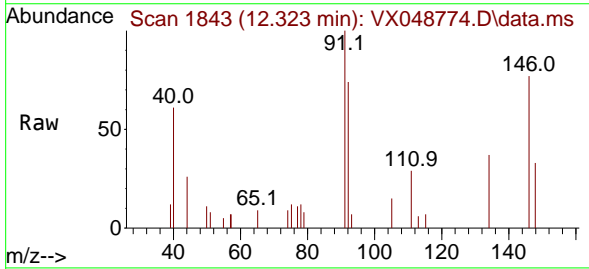
Instrument : MSVOA\_X  
 ClientSampleId : OWBR-05-135-120525

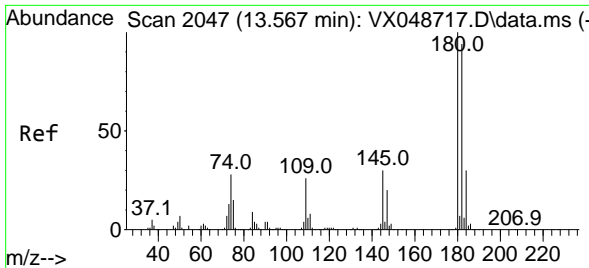
Tgt Ion:117 Resp: 398  
 Ion Ratio Lower Upper  
 117 100  
 201 66.3 36.4 109.1



#91  
 1,2-Dichlorobenzene  
 Concen: 0.207 ug/l  
 RT: 12.323 min Scan# 1843  
 Delta R.T. 0.006 min  
 Lab File: VX048774.D  
 Acq: 09 Dec 2025 11:45

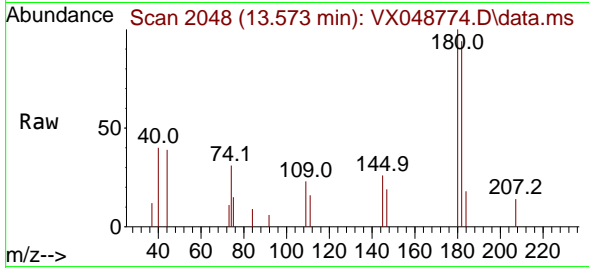
Tgt Ion:146 Resp: 1021  
 Ion Ratio Lower Upper  
 146 100  
 111 37.9 20.8 62.5  
 148 52.4 32.0 96.0





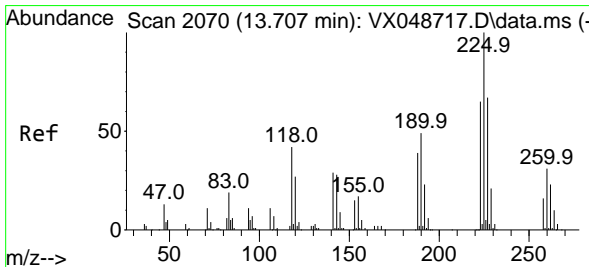
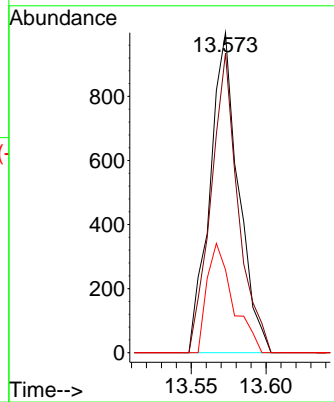
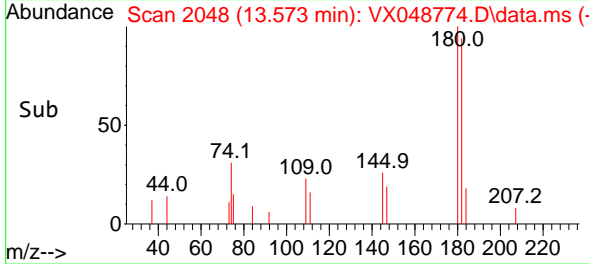
#93  
 1,2,4-Trichlorobenzene  
 Concen: 0.409 ug/l  
 RT: 13.573 min Scan# 2048  
 Delta R.T. 0.006 min  
 Lab File: VX048774.D  
 Acq: 09 Dec 2025 11:45

Instrument : MSVOA\_X  
 ClientSampleId : OWBR-05-135-120525

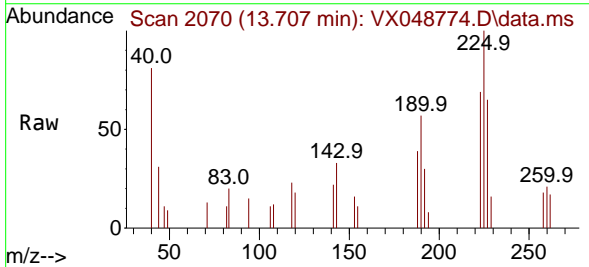


Tgt Ion:180 Resp: 1332

| Ion | Ratio | Lower | Upper |
|-----|-------|-------|-------|
| 180 | 100   |       |       |
| 182 | 88.9  | 46.9  | 140.8 |
| 145 | 30.9  | 15.1  | 45.3  |

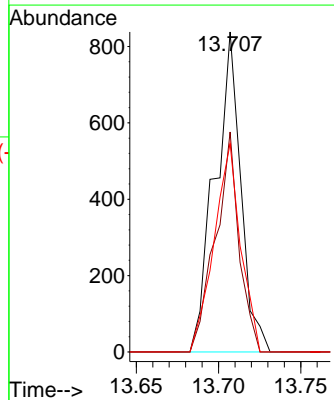
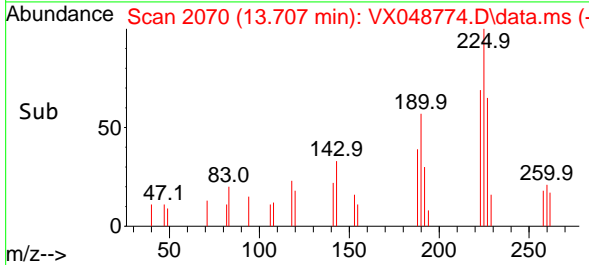


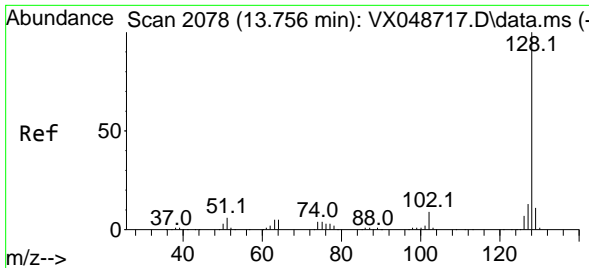
#94  
 Hexachlorobutadiene  
 Concen: 0.679 ug/l  
 RT: 13.707 min Scan# 2070  
 Delta R.T. 0.000 min  
 Lab File: VX048774.D  
 Acq: 09 Dec 2025 11:45



Tgt Ion:225 Resp: 915

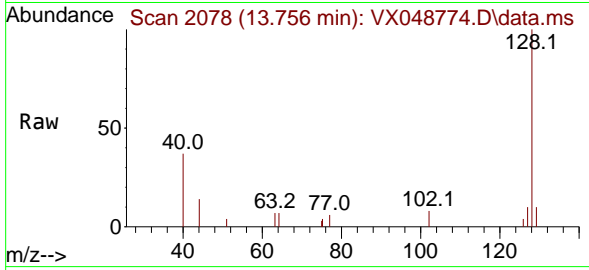
| Ion | Ratio | Lower | Upper |
|-----|-------|-------|-------|
| 225 | 100   |       |       |
| 223 | 63.0  | 33.0  | 98.9  |
| 227 | 67.2  | 32.9  | 98.7  |



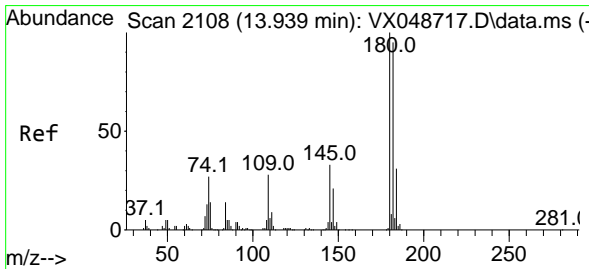
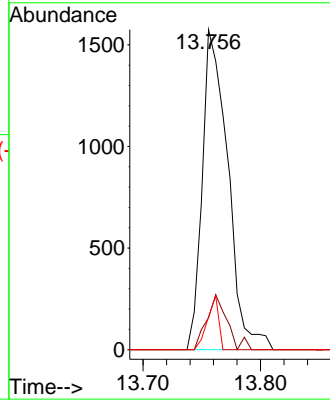
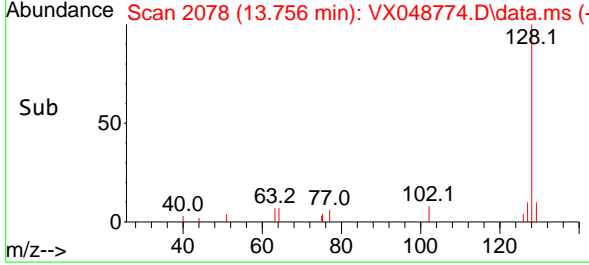


#95  
 Naphthalene  
 Concen: Below Cal  
 RT: 13.756 min Scan# 20  
 Delta R.T. 0.000 min  
 Lab File: VX048774.D  
 Acq: 09 Dec 2025 11:45

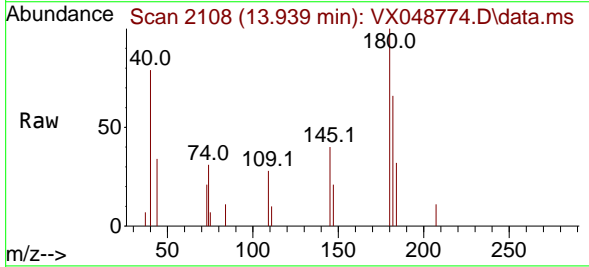
Instrument : MSVOA\_X  
 ClientSampleId : OWBR-05-135-120525



Tgt Ion:128 Resp: 2377  
 Ion Ratio Lower Upper  
 128 100  
 127 13.7 10.2 15.2  
 129 7.4 8.6 13.0#



#96  
 1,2,3-Trichlorobenzene  
 Concen: 0.408 ug/l  
 RT: 13.939 min Scan# 2108  
 Delta R.T. 0.000 min  
 Lab File: VX048774.D  
 Acq: 09 Dec 2025 11:45



Tgt Ion:180 Resp: 1227  
 Ion Ratio Lower Upper  
 180 100  
 182 94.5 48.0 144.2  
 145 29.6 16.6 49.8

