

Data Path : Z:\voasrv\HPCHEM1\MSVOA\_X\Data\VX120925\  
 Data File : VX048778.D  
 Acq On : 09 Dec 2025 13:06  
 Operator : JC/MD  
 Sample : Q3803-02  
 Misc : 5.0mL/MSVOA\_X/WATER  
 ALS Vial : 12 Sample Multiplier: 1

Instrument :  
 MSVOA\_X  
 ClientSampleId :

Quant Time: Dec 10 00:20:20 2025  
 Quant Method : Z:\voasrv\HPCHEM1\MSVOA\_X\Method\82X120425W.M  
 Quant Title : SW846 8260  
 QLast Update : Fri Dec 05 03:27:34 2025  
 Response via : Initial Calibration

| Compound                      | R.T.   | QIon           | Response | Conc    | Units    | Dev(Min) |
|-------------------------------|--------|----------------|----------|---------|----------|----------|
| Internal Standards            |        |                |          |         |          |          |
| 1) Pentafluorobenzene         | 5.537  | 168            | 177204   | 50.000  | ug/l     | 0.00     |
| 34) 1,4-Difluorobenzene       | 6.745  | 114            | 363764   | 50.000  | ug/l     | 0.00     |
| 63) Chlorobenzene-d5          | 10.037 | 117            | 381897   | 50.000  | ug/l     | 0.00     |
| 72) 1,4-Dichlorobenzene-d4    | 12.006 | 152            | 204856   | 50.000  | ug/l     | 0.00     |
| System Monitoring Compounds   |        |                |          |         |          |          |
| 33) 1,2-Dichloroethane-d4     | 5.940  | 65             | 126167   | 53.047  | ug/l     | 0.00     |
| Spiked Amount                 | 50.000 | Range 78 - 117 | Recovery | =       | 106.100% |          |
| 35) Dibromofluoromethane      | 5.373  | 113            | 109009   | 43.523  | ug/l     | 0.00     |
| Spiked Amount                 | 50.000 | Range 75 - 124 | Recovery | =       | 87.040%  |          |
| 50) Toluene-d8                | 8.634  | 98             | 395249   | 45.019  | ug/l     | 0.00     |
| Spiked Amount                 | 50.000 | Range 92 - 112 | Recovery | =       | 90.040%# |          |
| 62) 4-Bromofluorobenzene      | 11.061 | 95             | 172878   | 57.103  | ug/l     | 0.00     |
| Spiked Amount                 | 50.000 | Range 83 - 123 | Recovery | =       | 114.200% |          |
| Target Compounds              |        |                |          |         |          |          |
|                               |        |                |          |         |          | Qvalue   |
| 5) Bromomethane               | 1.630  | 94             | 476      | 0.317   | ug/l #   | 72       |
| 10) Methyl Iodide             | 2.465  | 142            | 1443     | 0.503   | ug/l #   | 95       |
| 11) Tert butyl alcohol        | 2.934  | 59             | 4812     | 12.531  | ug/l     | 98       |
| 13) Acrolein                  | 2.245  | 56             | 756      | 41.889  | ug/l #   | 1        |
| 15) Acrylonitrile             | 3.068  | 53             | 1635     | 1.366   | ug/l #   | 74       |
| 16) Acetone                   | 2.373  | 43             | 97728    | 107.334 | ug/l     | 97       |
| 17) Carbon Disulfide          | 2.520  | 76             | 2017     | 0.338   | ug/l     | 100      |
| 18) Methyl Acetate            | 2.703  | 43             | 9631     | 3.759   | ug/l     | 95       |
| 20) Methylene Chloride        | 2.788  | 84             | 124163   | 54.557  | ug/l     | 97       |
| 25) 2-Butanone                | 4.550  | 43             | 16468    | 12.255  | ug/l     | 94       |
| 29) Tetrahydrofuran           | 5.025  | 42             | 2400     | 2.339   | ug/l #   | 36       |
| 31) Cyclohexane               | 5.458  | 56             | 1006     | 0.313   | ug/l #   | 65       |
| 36) 1,1-Dichloropropene       | 5.537  | 75             | 13833    | 4.032   | ug/l #   | 48       |
| 37) Ethyl Acetate             | 4.550  | 43             | 16468    | 4.017   | ug/l #   | 71       |
| 38) Carbon Tetrachloride      | 5.531  | 117            | 17373    | 4.471   | ug/l #   | 14       |
| 39) Methylcyclohexane         | 7.366  | 83             | 831      | 0.205   | ug/l #   | 83       |
| 40) Benzene                   | 6.025  | 78             | 1362856  | 134.014 | ug/l     | 100      |
| 42) 1,2-Dichloroethane        | 6.031  | 62             | 11034    | 3.066   | ug/l #   | 73       |
| 43) Isopropyl Acetate         | 6.330  | 43             | 14411    | 2.322   | ug/l     | 95       |
| 48) Methyl methacrylate       | 7.781  | 41             | 73596    | 23.571  | ug/l #   | 41       |
| 49) 1,4-Dioxane               | 7.781  | 88             | 57       | 1.327   | ug/l #   | 1        |
| 51) 4-Methyl-2-Pentanone      | 8.555  | 43             | 294081   | 76.332  | ug/l     | 89       |
| 52) Toluene                   | 8.702  | 92             | 450003   | 73.382  | ug/l     | 100      |
| 54) cis-1,3-Dichloropropene   | 8.531  | 75             | 20866    | 5.078   | ug/l #   | 66       |
| 55) 1,1,2-Trichloroethane     | 8.994  | 97             | 3387     | 1.373   | ug/l #   | 19       |
| 57) 1,3-Dichloropropane       | 9.470  | 76             | 1571     | 0.383   | ug/l #   | 47       |
| 59) 2-Hexanone                | 9.464  | 43             | 23199    | 8.578   | ug/l #   | 46       |
| 67) Ethyl Benzene             | 10.177 | 91             | 39039    | 2.862   | ug/l     | 100      |
| 68) m/p-Xylenes               | 10.281 | 106            | 73302    | 13.795  | ug/l     | 97       |
| 69) o-Xylene                  | 10.622 | 106            | 47315    | 9.503   | ug/l     | 100      |
| 70) Styrene                   | 10.640 | 104            | 14331    | 1.677   | ug/l #   | 54       |
| 76) 1,2,3-Trichloropropane    | 11.061 | 75             | 86153    | 22.580  | ug/l #   | 30       |
| 78) n-propylbenzene           | 11.286 | 91             | 4497     | 0.281   | ug/l     | 99       |
| 79) 2-Chlorotoluene           | 11.439 | 91             | 2280     | 0.234   | ug/l     | 71       |
| 80) 1,3,5-Trimethylbenzene    | 11.433 | 105            | 7650     | 0.674   | ug/l     | 98       |
| 81) trans-1,4-Dichloro-2-b... | 11.061 | 75             | 86153    | 53.636  | ug/l #   | 3        |

Data Path : Z:\voasrv\HPCHEM1\MSVOA\_X\Data\VX120925\  
 Data File : VX048778.D  
 Acq On : 09 Dec 2025 13:06  
 Operator : JC/MD  
 Sample : Q3803-02  
 Misc : 5.0mL/MSVOA\_X/WATER  
 ALS Vial : 12 Sample Multiplier: 1

Instrument :  
 MSVOA\_X  
 ClientSampleId :

Quant Time: Dec 10 00:20:20 2025  
 Quant Method : Z:\voasrv\HPCHEM1\MSVOA\_X\Method\82X120425W.M  
 Quant Title : SW846 8260  
 QLast Update : Fri Dec 05 03:27:34 2025  
 Response via : Initial Calibration

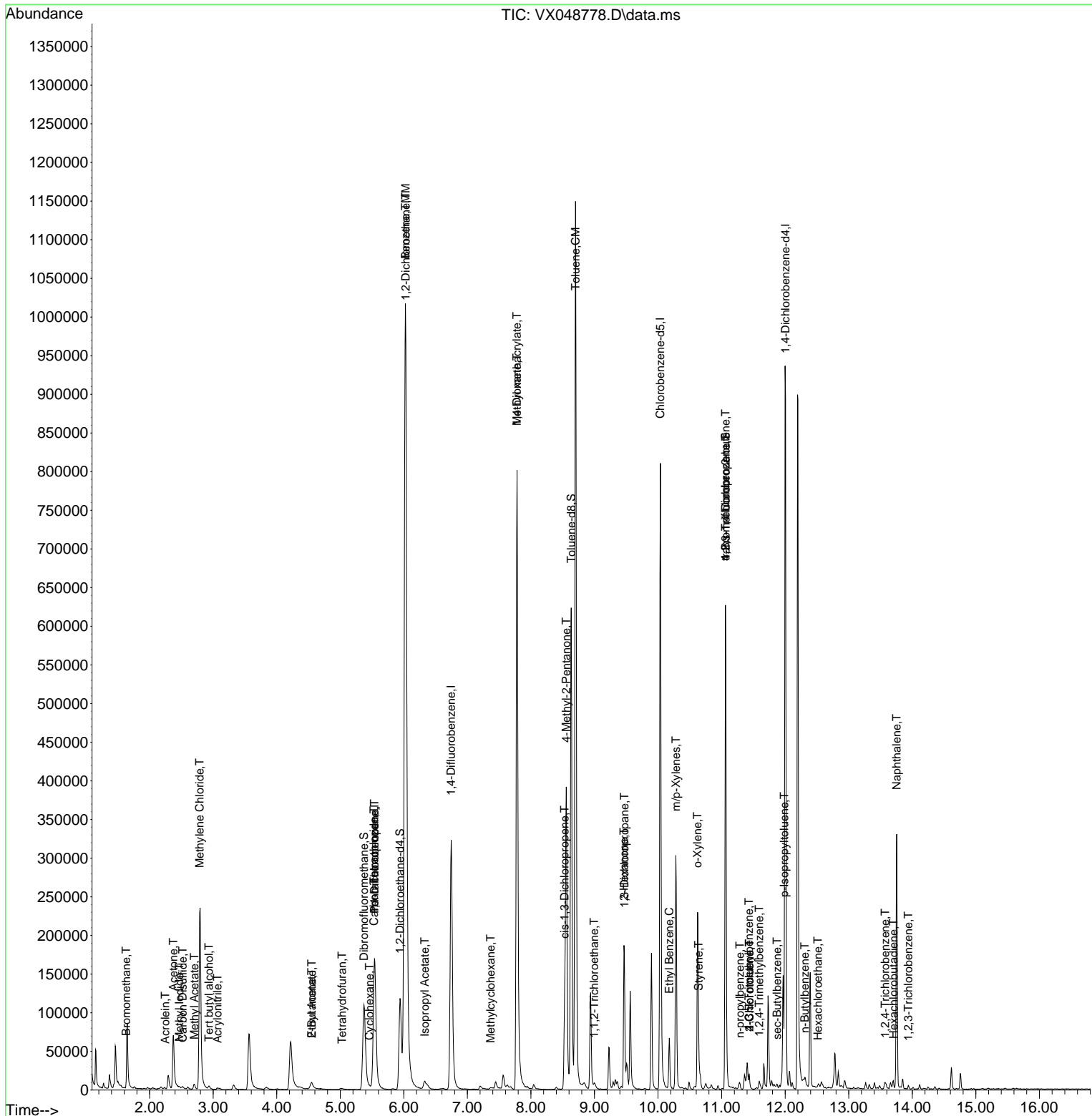
| Compound                   | R.T.   | QIon | Response | Conc   | Units  | Dev(Min) |
|----------------------------|--------|------|----------|--------|--------|----------|
| 82) 4-Chlorotoluene        | 11.439 | 91   | 2280     | 0.200  | ug/l   | 76       |
| 84) 1,2,4-Trimethylbenzene | 11.591 | 105  | 4235     | 0.370  | ug/l   | 74       |
| 85) sec-Butylbenzene       | 11.872 | 105  | 2980     | 0.209  | ug/l   | 100      |
| 86) p-Isopropyltoluene     | 11.988 | 119  | 2594     | 0.212  | ug/l # | 65       |
| 89) n-Butylbenzene         | 12.311 | 91   | 3610     | 0.316  | ug/l   | 86       |
| 90) Hexachloroethane       | 12.518 | 117  | 520      | 0.209  | ug/l   | 79       |
| 93) 1,2,4-Trichlorobenzene | 13.573 | 180  | 1363     | 0.313  | ug/l   | 97       |
| 94) Hexachlorobutadiene    | 13.707 | 225  | 634      | 0.352  | ug/l   | 99       |
| 95) Naphthalene            | 13.756 | 128  | 194012   | 16.976 | ug/l   | 100      |
| 96) 1,2,3-Trichlorobenzene | 13.938 | 180  | 1184     | 0.295  | ug/l   | 94       |

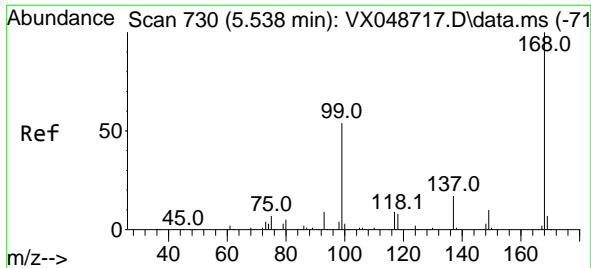
(#) = qualifier out of range (m) = manual integration (+) = signals summed

Data Path : Z:\voasrv\HPCHEM1\MSVOA\_X\Data\VX120925\  
 Data File : VX048778.D  
 Acq On : 09 Dec 2025 13:06  
 Operator : JC/MD  
 Sample : Q3803-02  
 Misc : 5.0mL/MSVOA\_X/WATER  
 ALS Vial : 12 Sample Multiplier: 1

Instrument :  
 MSVOA\_X  
 ClientSampleId :

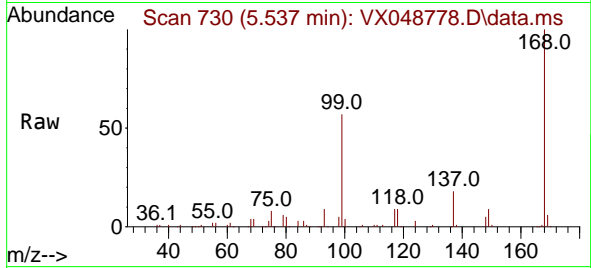
Quant Time: Dec 10 00:20:20 2025  
 Quant Method : Z:\voasrv\HPCHEM1\MSVOA\_X\Method\82X120425W.M  
 Quant Title : SW846 8260  
 QLast Update : Fri Dec 05 03:27:34 2025  
 Response via : Initial Calibration



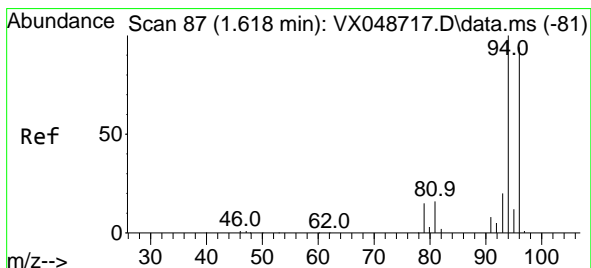
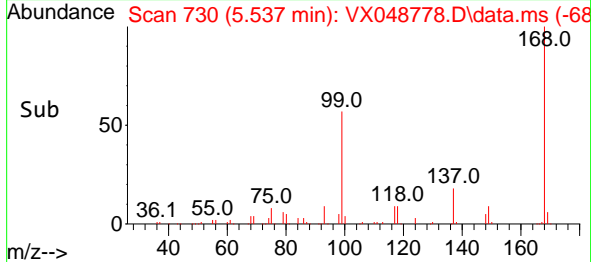
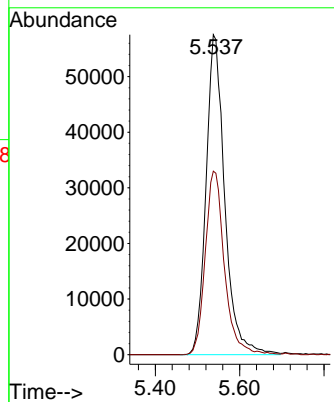


#1  
 Pentafluorobenzene  
 Concen: 50.000 ug/l  
 RT: 5.537 min Scan# 71  
 Delta R.T. -0.001 min  
 Lab File: VX048778.D  
 Acq: 09 Dec 2025 13:06

Instrument :  
 MSVOA\_X  
 ClientSampleId :

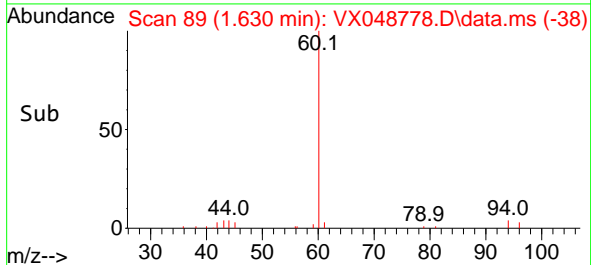
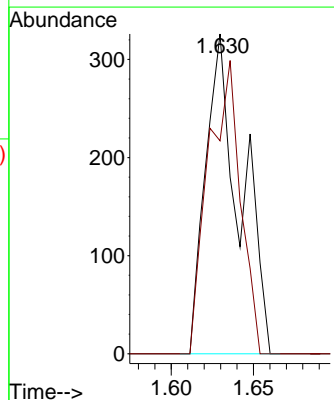
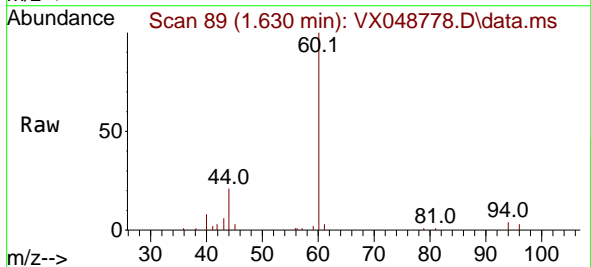


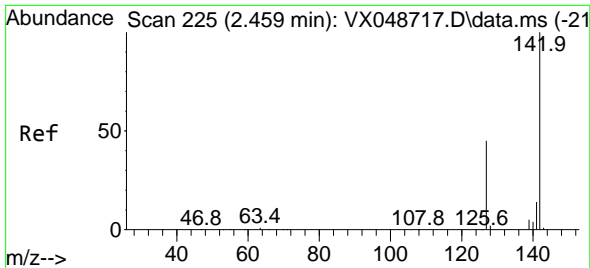
Tgt Ion:168 Resp: 177204  
 Ion Ratio Lower Upper  
 168 100  
 99 57.4 44.2 66.4



#5  
 Bromomethane  
 Concen: 0.317 ug/l  
 RT: 1.630 min Scan# 89  
 Delta R.T. 0.012 min  
 Lab File: VX048778.D  
 Acq: 09 Dec 2025 13:06

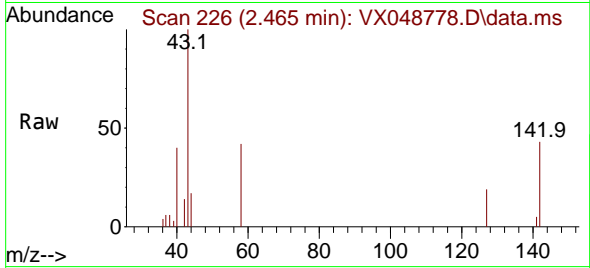
Tgt Ion: 94 Resp: 476  
 Ion Ratio Lower Upper  
 94 100  
 96 66.6 75.2 112.8#



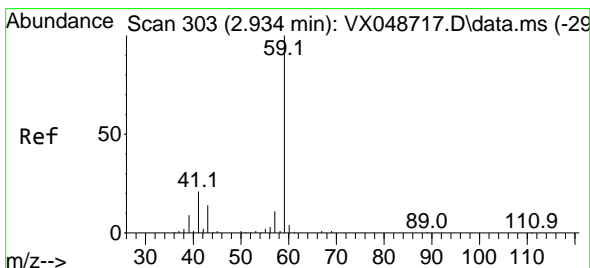
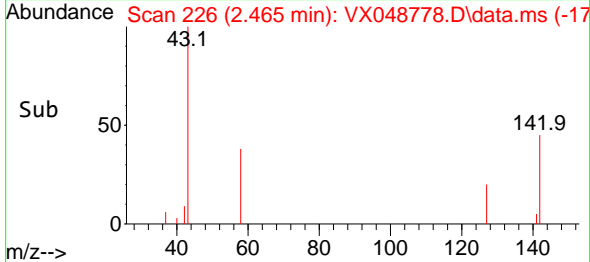
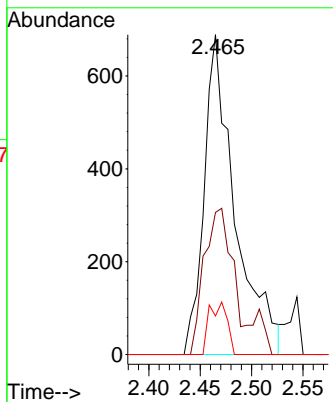


#10  
Methyl Iodide  
Concen: 0.503 ug/l  
RT: 2.465 min Scan# 21  
Delta R.T. 0.006 min  
Lab File: VX048778.D  
Acq: 09 Dec 2025 13:06

Instrument : MSVOA\_X  
ClientSampleId :

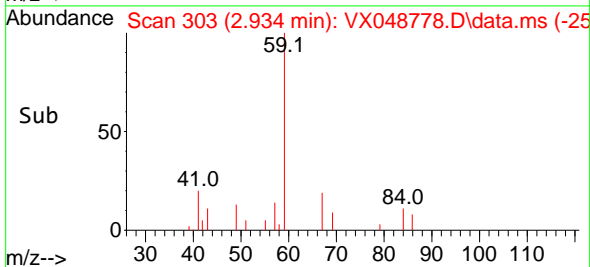
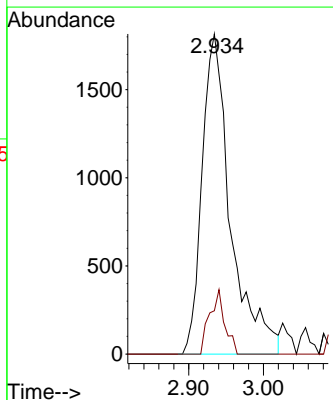
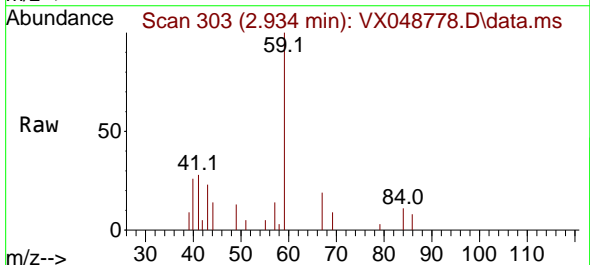


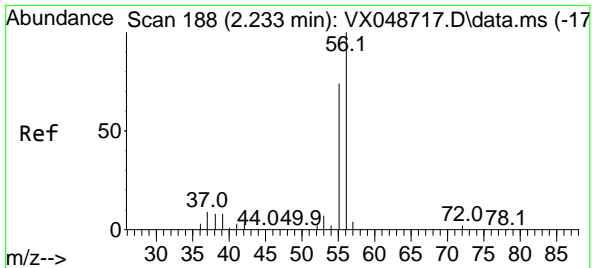
Tgt Ion:142 Resp: 1443  
Ion Ratio Lower Upper  
142 100  
127 42.8 35.8 53.6  
141 9.5 11.1 16.7#



#11  
Tert butyl alcohol  
Concen: 12.531 ug/l  
RT: 2.934 min Scan# 303  
Delta R.T. -0.000 min  
Lab File: VX048778.D  
Acq: 09 Dec 2025 13:06

Tgt Ion: 59 Resp: 4812  
Ion Ratio Lower Upper  
59 100  
57 10.7 8.1 12.1

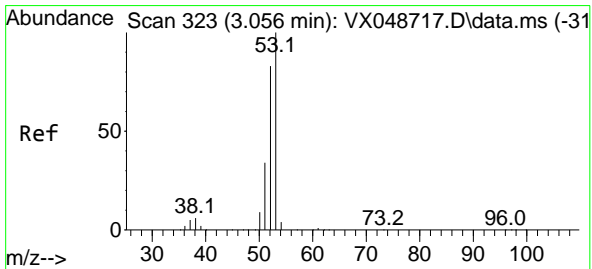
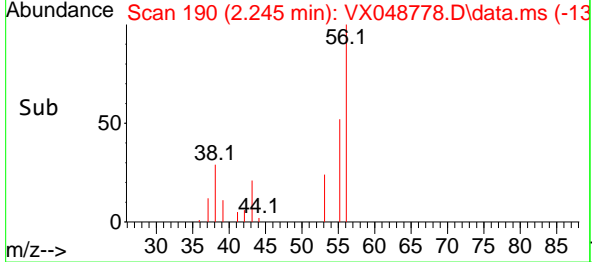
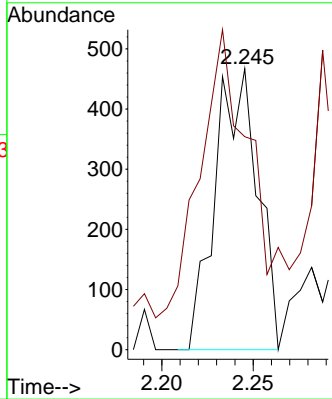
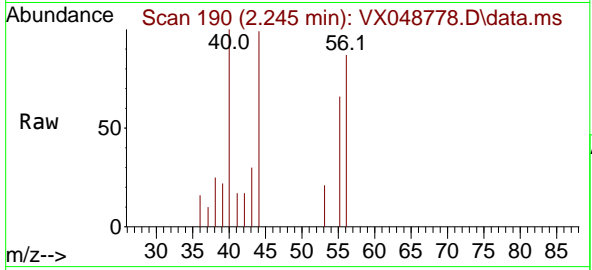




#13  
 Acrolein  
 Concen: 41.889 ug/l  
 RT: 2.245 min Scan# 190  
 Delta R.T. 0.012 min  
 Lab File: VX048778.D  
 Acq: 09 Dec 2025 13:06

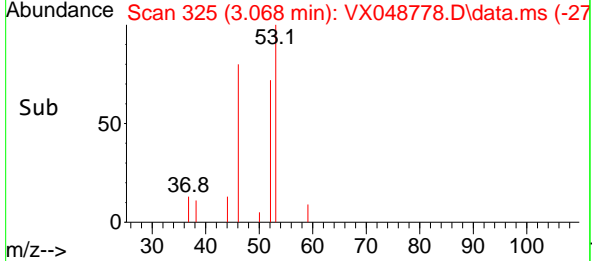
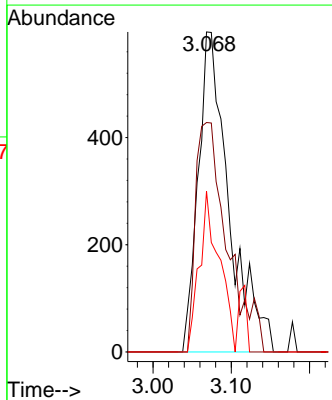
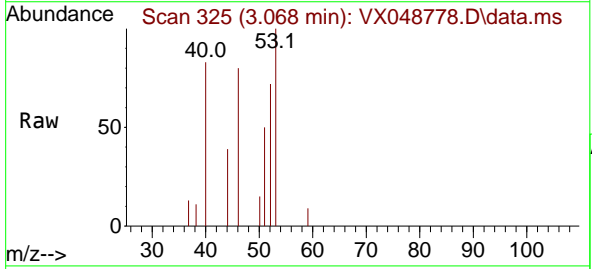
Instrument : MSVOA\_X  
 ClientSampleId :

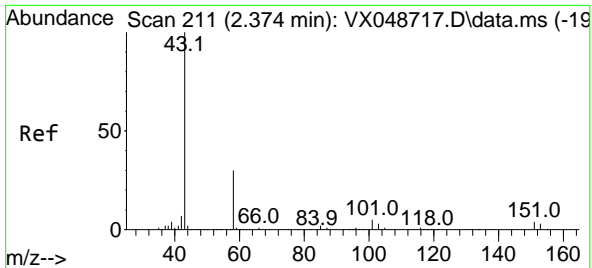
Tgt Ion: 56 Resp: 756  
 Ion Ratio Lower Upper  
 56 100  
 55 152.4 55.8 83.6#



#15  
 Acrylonitrile  
 Concen: 1.366 ug/l  
 RT: 3.068 min Scan# 325  
 Delta R.T. 0.012 min  
 Lab File: VX048778.D  
 Acq: 09 Dec 2025 13:06

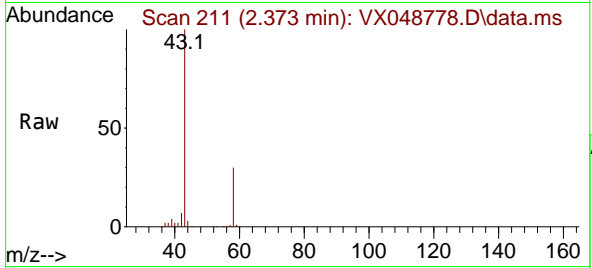
Tgt Ion: 53 Resp: 1635  
 Ion Ratio Lower Upper  
 53 100  
 52 73.5 66.3 99.5  
 51 0.0 28.7 43.1#



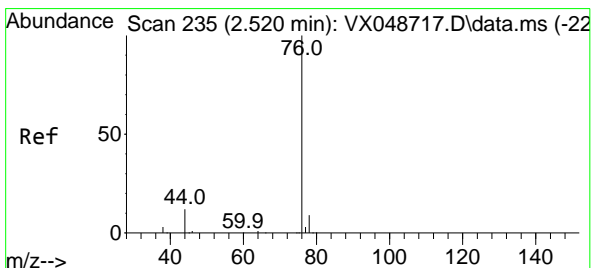
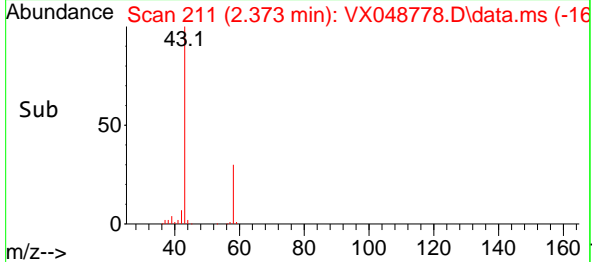
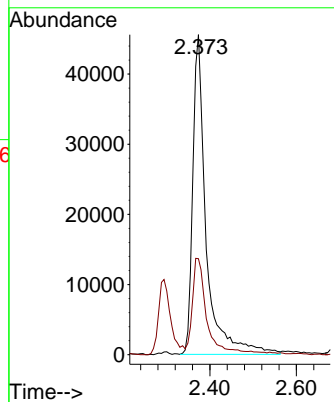


#16  
 Acetone  
 Concen: 107.334 ug/l  
 RT: 2.373 min Scan# 211  
 Delta R.T. -0.000 min  
 Lab File: VX048778.D  
 Acq: 09 Dec 2025 13:06

Instrument :  
 MSVOA\_X  
 ClientSampleId :

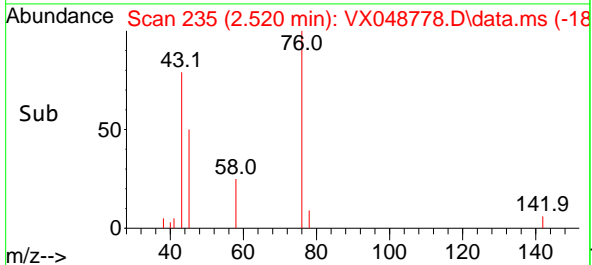
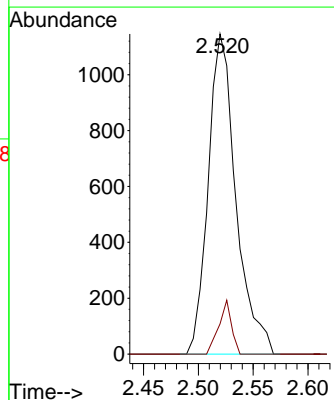
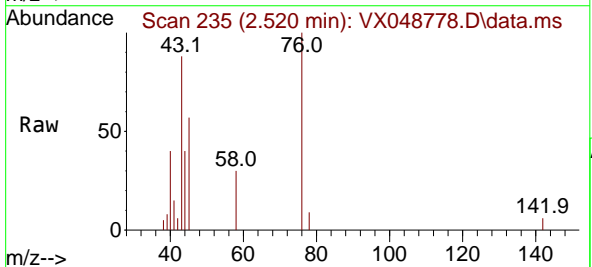


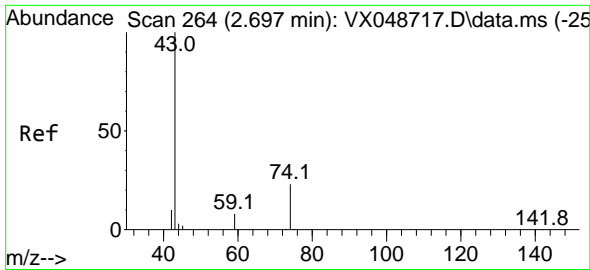
Tgt Ion: 43 Resp: 97728  
 Ion Ratio Lower Upper  
 43 100  
 58 29.5 25.0 37.4



#17  
 Carbon Disulfide  
 Concen: 0.338 ug/l  
 RT: 2.520 min Scan# 235  
 Delta R.T. -0.000 min  
 Lab File: VX048778.D  
 Acq: 09 Dec 2025 13:06

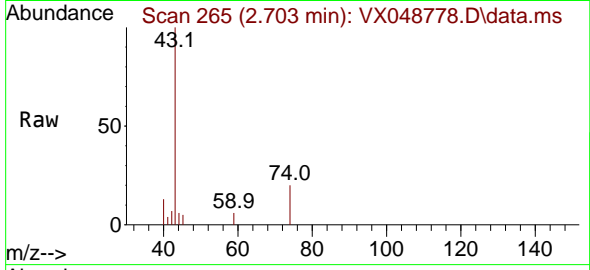
Tgt Ion: 76 Resp: 2017  
 Ion Ratio Lower Upper  
 76 100  
 78 9.4 7.4 11.2



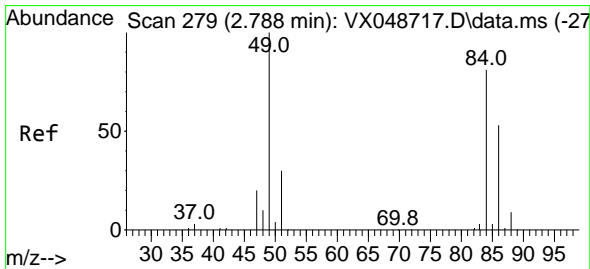
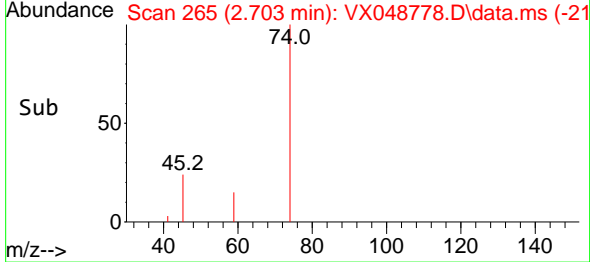
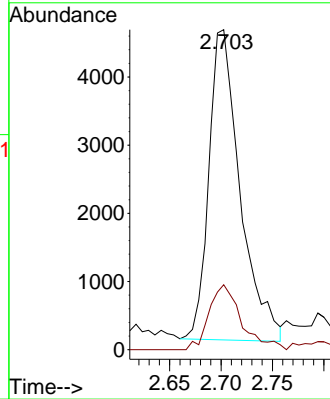


#18  
 Methyl Acetate  
 Concen: 3.759 ug/l  
 RT: 2.703 min Scan# 20  
 Delta R.T. 0.006 min  
 Lab File: VX048778.D  
 Acq: 09 Dec 2025 13:06

Instrument :  
 MSVOA\_X  
 ClientSampleId :

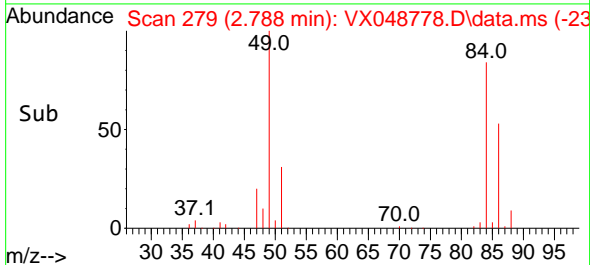
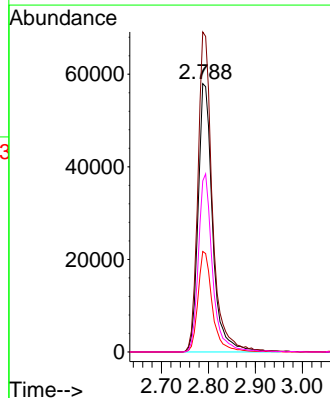
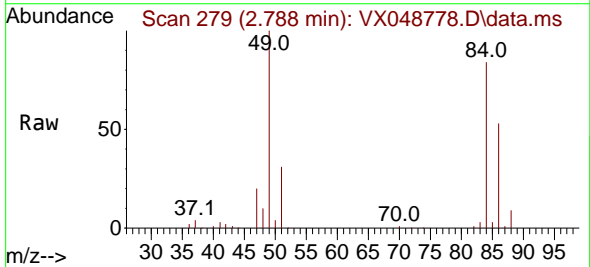


Tgt Ion: 43 Resp: 9631  
 Ion Ratio Lower Upper  
 43 100  
 74 21.6 19.2 28.8

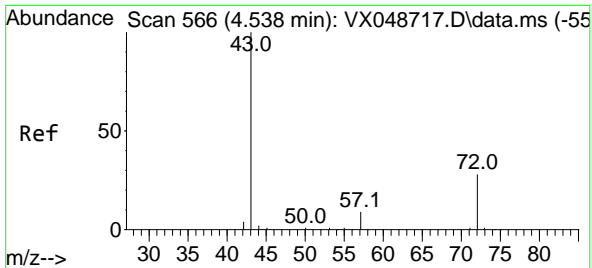


#20  
 Methylene Chloride  
 Concen: 54.557 ug/l  
 RT: 2.788 min Scan# 279  
 Delta R.T. -0.000 min  
 Lab File: VX048778.D  
 Acq: 09 Dec 2025 13:06

Tgt Ion: 84 Resp: 124163  
 Ion Ratio Lower Upper  
 84 100  
 49 119.2 98.7 148.1  
 51 37.4 29.4 44.2  
 86 63.7 52.5 78.7



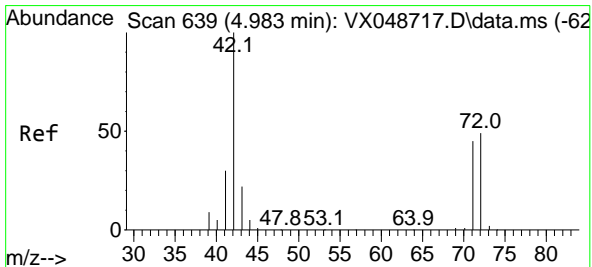
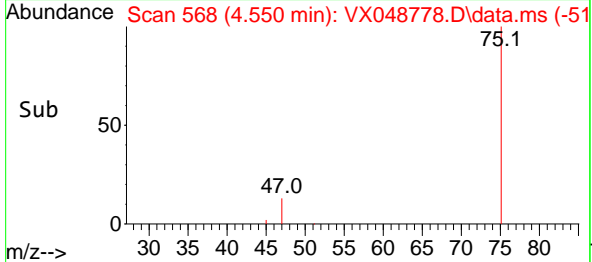
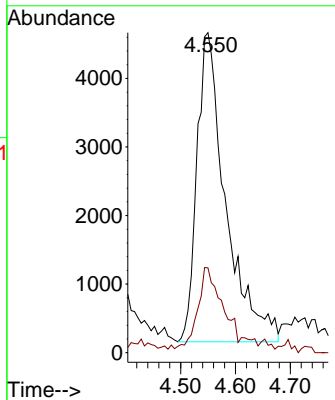
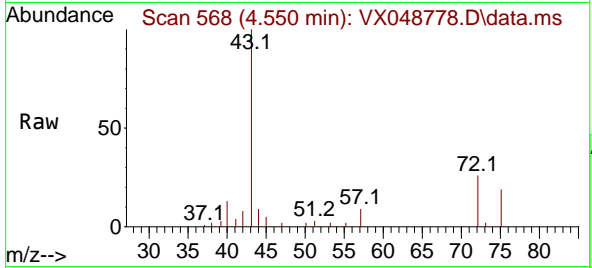




#25  
 2-Butanone  
 Concen: 12.255 ug/l  
 RT: 4.550 min Scan# 568  
 Delta R.T. 0.012 min  
 Lab File: VX048778.D  
 Acq: 09 Dec 2025 13:06

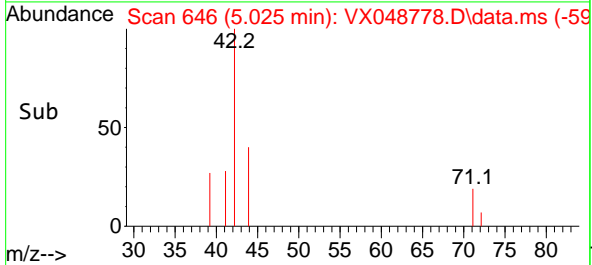
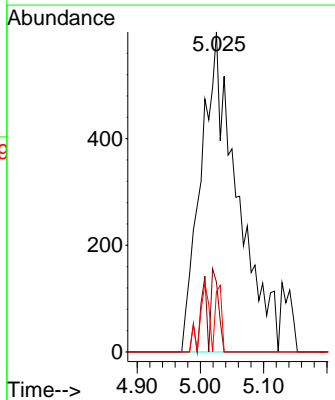
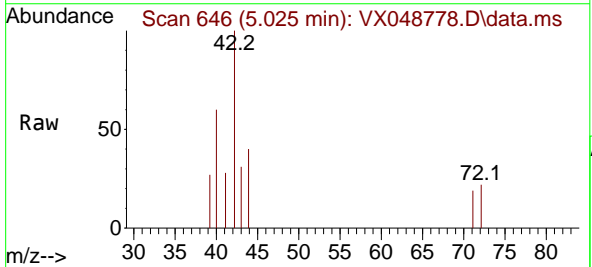
Instrument : MSVOA\_X  
 ClientSampleId :

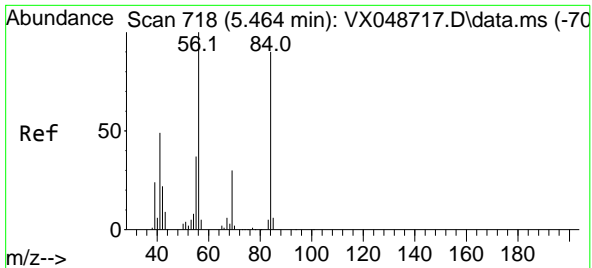
Tgt Ion: 43 Resp: 16468  
 Ion Ratio Lower Upper  
 43 100  
 72 25.4 22.6 34.0



#29  
 Tetrahydrofuran  
 Concen: 2.339 ug/l  
 RT: 5.025 min Scan# 646  
 Delta R.T. 0.043 min  
 Lab File: VX048778.D  
 Acq: 09 Dec 2025 13:06

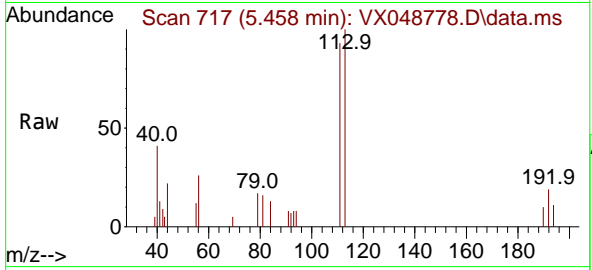
Tgt Ion: 42 Resp: 2400  
 Ion Ratio Lower Upper  
 42 100  
 72 5.3 39.4 59.2#  
 71 3.6 35.8 53.6#





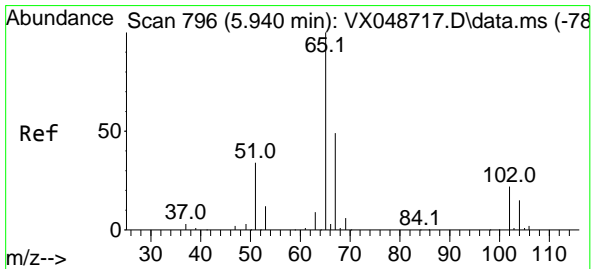
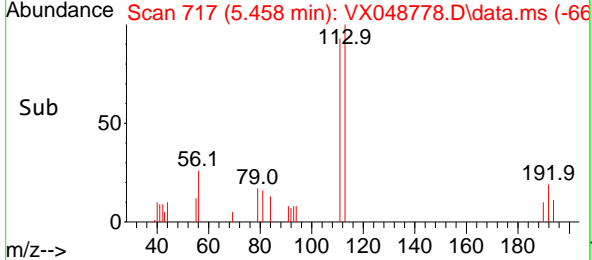
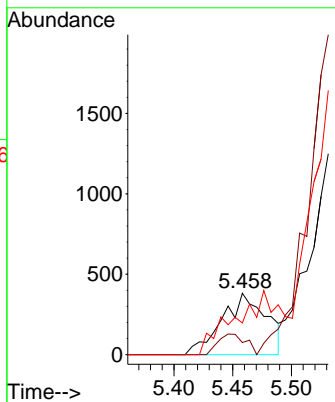
#31  
 Cyclohexane  
 Concen: 0.313 ug/l  
 RT: 5.458 min Scan# 717  
 Delta R.T. -0.006 min  
 Lab File: VX048778.D  
 Acq: 09 Dec 2025 13:06

Instrument :  
 MSVOA\_X  
 ClientSampleId :



Tgt Ion: 56 Resp: 1006

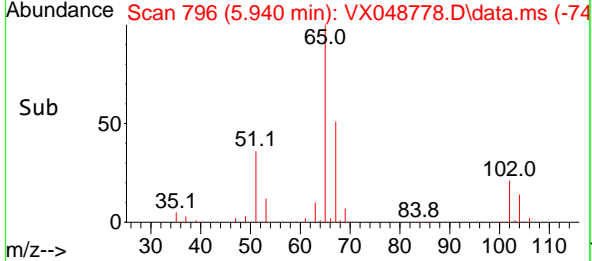
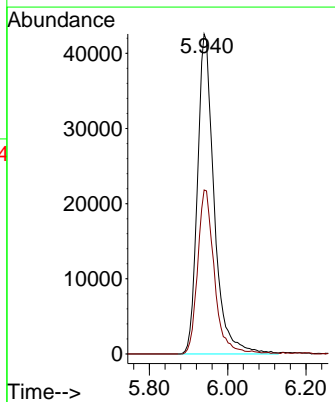
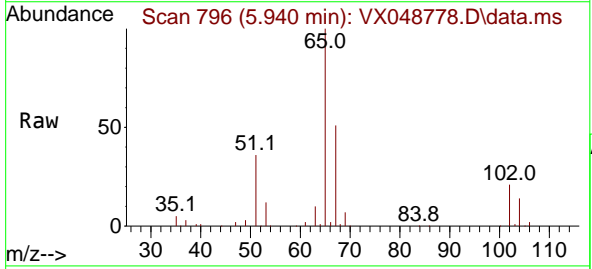
| Ion | Ratio | Lower | Upper  |
|-----|-------|-------|--------|
| 56  | 100   |       |        |
| 69  | 19.6  | 24.2  | 36.2#  |
| 84  | 51.6  | 72.1  | 108.1# |

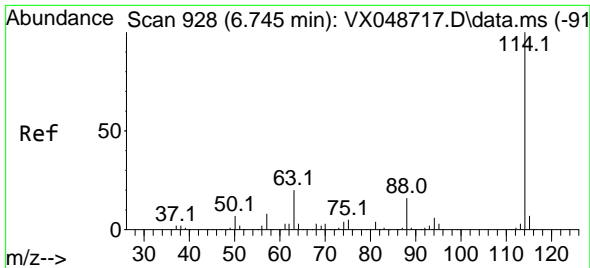


#33  
 1,2-Dichloroethane-d4  
 Concen: 53.047 ug/l  
 RT: 5.940 min Scan# 796  
 Delta R.T. -0.000 min  
 Lab File: VX048778.D  
 Acq: 09 Dec 2025 13:06

Tgt Ion: 65 Resp: 126167

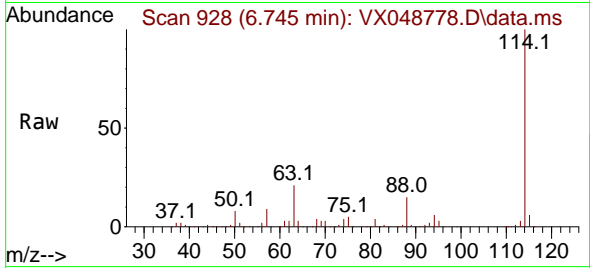
| Ion | Ratio | Lower | Upper |
|-----|-------|-------|-------|
| 65  | 100   |       |       |
| 67  | 50.8  | 0.0   | 107.4 |



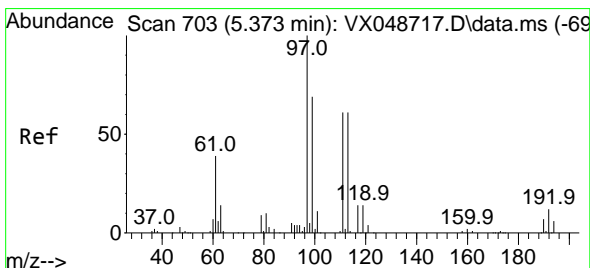
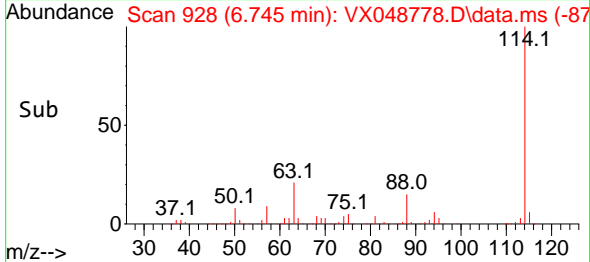
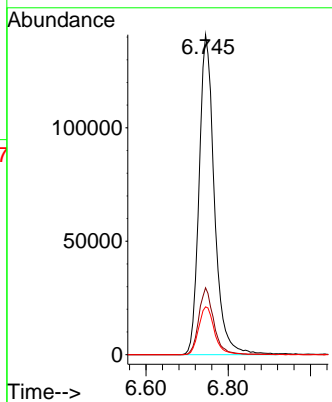


#34  
 1,4-Difluorobenzene  
 Concen: 50.000 ug/l  
 RT: 6.745 min Scan# 91  
 Delta R.T. -0.000 min  
 Lab File: VX048778.D  
 Acq: 09 Dec 2025 13:06

Instrument :  
 MSVOA\_X  
 ClientSampleId :

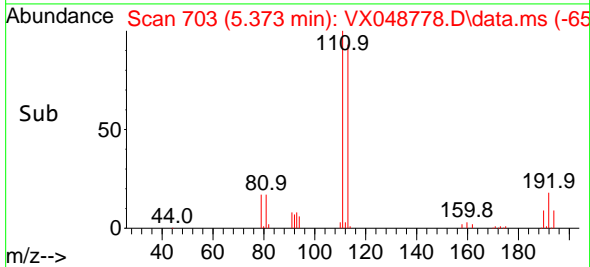
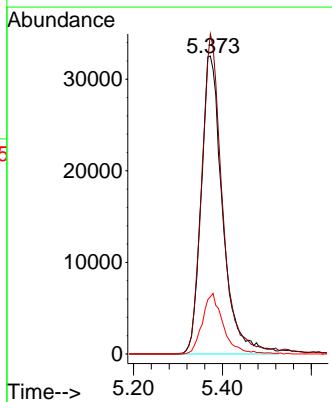
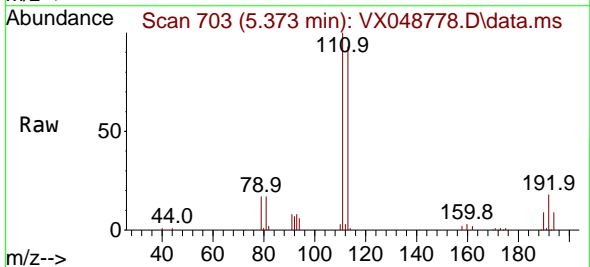


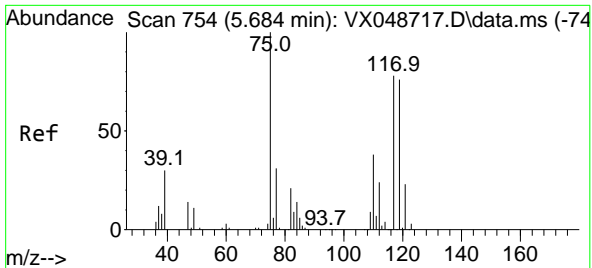
Tgt Ion:114 Resp: 363764  
 Ion Ratio Lower Upper  
 114 100  
 63 20.9 0.0 39.0  
 88 15.0 0.0 31.8



#35  
 Dibromofluoromethane  
 Concen: 43.523 ug/l  
 RT: 5.373 min Scan# 703  
 Delta R.T. -0.000 min  
 Lab File: VX048778.D  
 Acq: 09 Dec 2025 13:06

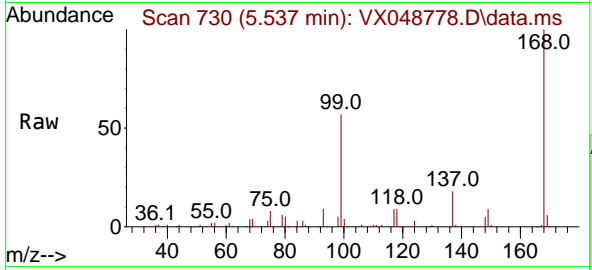
Tgt Ion:113 Resp: 109009  
 Ion Ratio Lower Upper  
 113 100  
 111 102.6 79.5 119.3  
 192 19.9 16.1 24.1





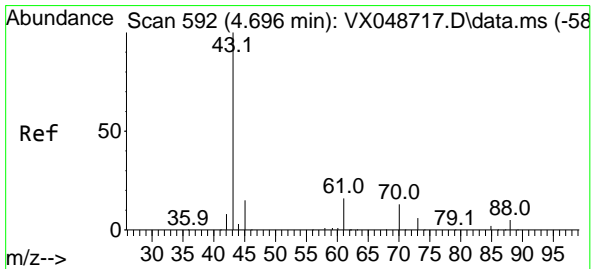
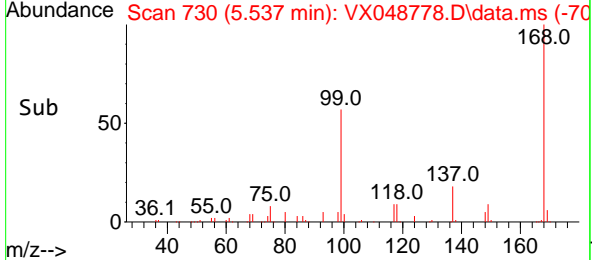
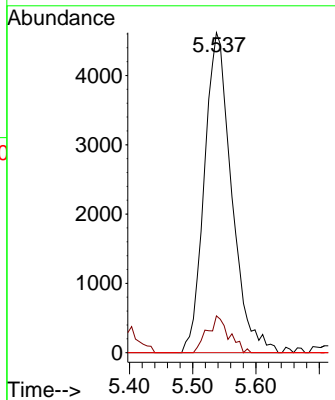
#36  
 1,1-Dichloropropene  
 Concen: 4.032 ug/l  
 RT: 5.537 min Scan# 71  
 Delta R.T. -0.146 min  
 Lab File: VX048778.D  
 Acq: 09 Dec 2025 13:06

Instrument :  
 MSVOA\_X  
 ClientSampleId :

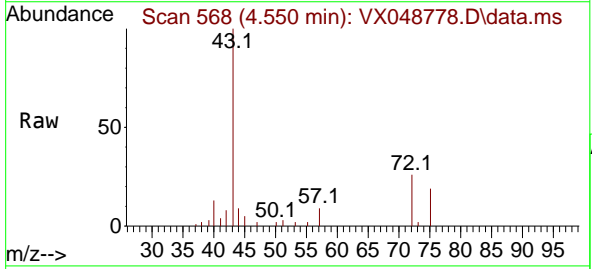


Tgt Ion: 75 Resp: 13833

| Ion | Ratio | Lower | Upper |
|-----|-------|-------|-------|
| 75  | 100   |       |       |
| 110 | 9.1   | 18.6  | 55.8# |
| 77  | 0.0   | 25.3  | 37.9# |

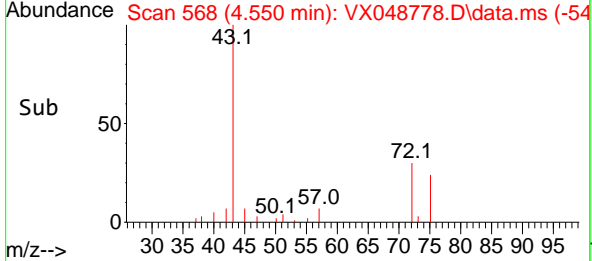
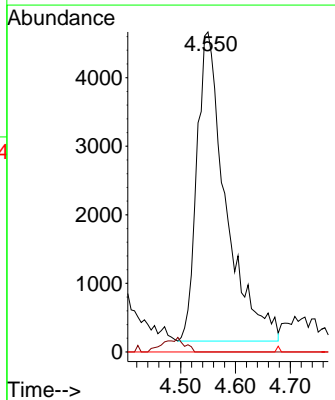


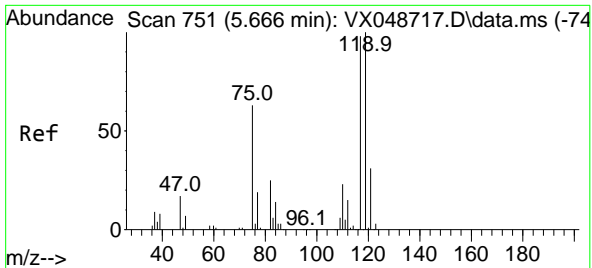
#37  
 Ethyl Acetate  
 Concen: 4.017 ug/l  
 RT: 4.550 min Scan# 568  
 Delta R.T. -0.146 min  
 Lab File: VX048778.D  
 Acq: 09 Dec 2025 13:06



Tgt Ion: 43 Resp: 16468

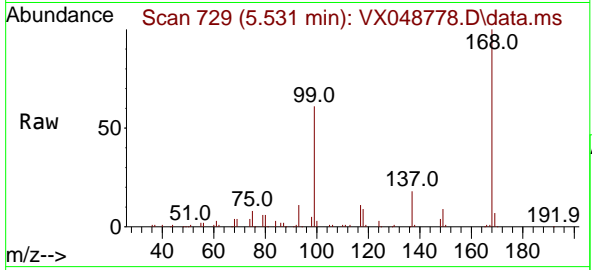
| Ion | Ratio | Lower | Upper |
|-----|-------|-------|-------|
| 43  | 100   |       |       |
| 61  | 0.0   | 9.7   | 14.5# |
| 70  | 0.0   | 8.2   | 12.4# |





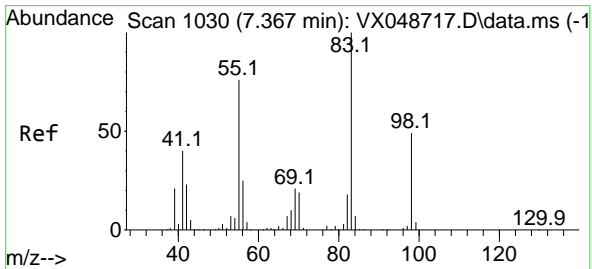
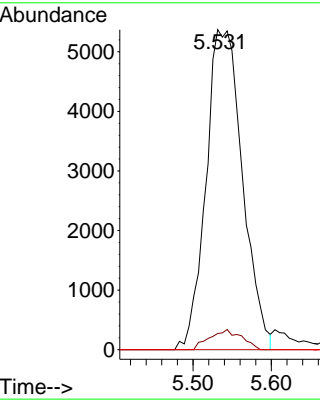
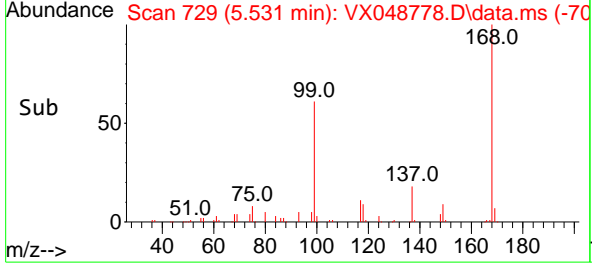
#38  
 Carbon Tetrachloride  
 Concen: 4.471 ug/l  
 RT: 5.531 min Scan# 71  
 Delta R.T. -0.134 min  
 Lab File: VX048778.D  
 Acq: 09 Dec 2025 13:06

Instrument : MSVOA\_X  
 ClientSampleId :

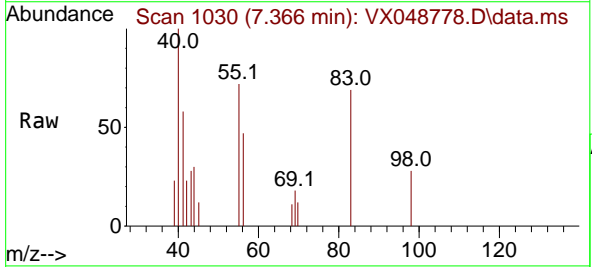


Tgt Ion: 117 Resp: 17373

| Ion | Ratio | Lower | Upper  |
|-----|-------|-------|--------|
| 117 | 100   |       |        |
| 119 | 5.1   | 80.5  | 120.7# |
| 121 | 0.0   | 25.4  | 38.0#  |

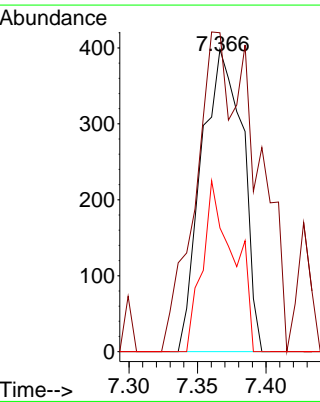
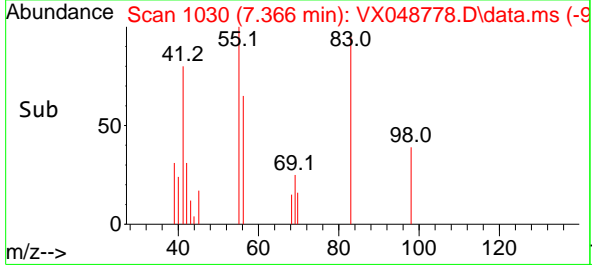


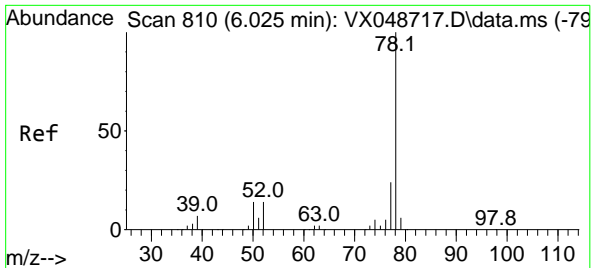
#39  
 Methylcyclohexane  
 Concen: 0.205 ug/l  
 RT: 7.366 min Scan# 1030  
 Delta R.T. -0.000 min  
 Lab File: VX048778.D  
 Acq: 09 Dec 2025 13:06



Tgt Ion: 83 Resp: 831

| Ion | Ratio | Lower | Upper |
|-----|-------|-------|-------|
| 83  | 100   |       |       |
| 55  | 92.5  | 60.6  | 90.8# |
| 98  | 41.0  | 39.3  | 58.9  |

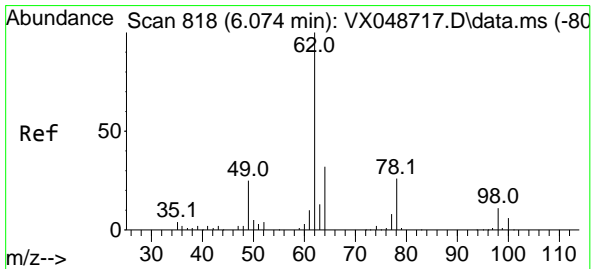
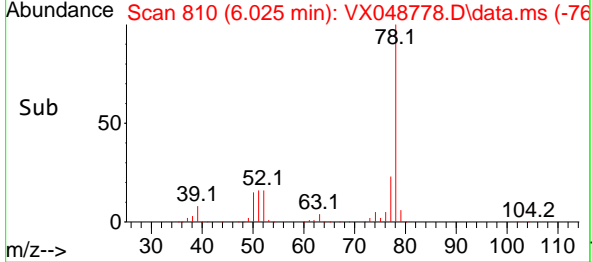
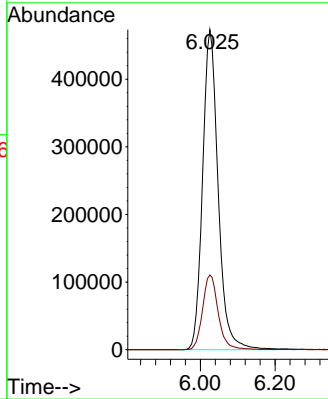
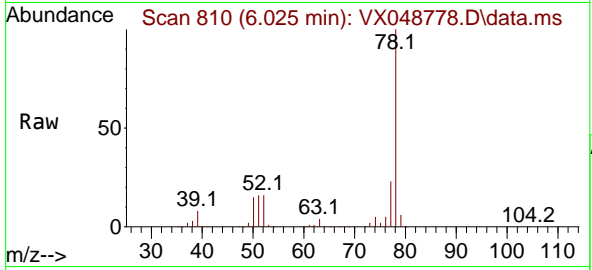




#40  
Benzene  
Concen: 134.014 ug/l  
RT: 6.025 min Scan# 810  
Delta R.T. -0.000 min  
Lab File: VX048778.D  
Acq: 09 Dec 2025 13:06

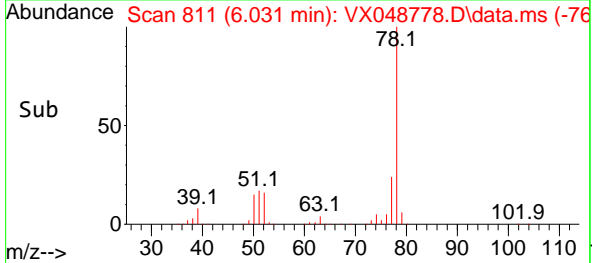
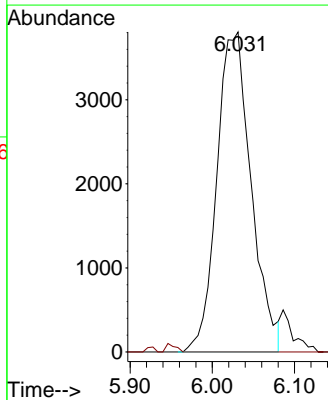
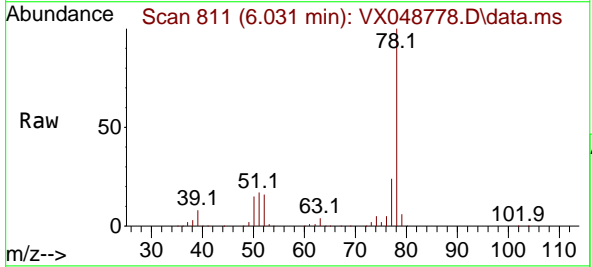
Instrument : MSVOA\_X  
ClientSampleId :

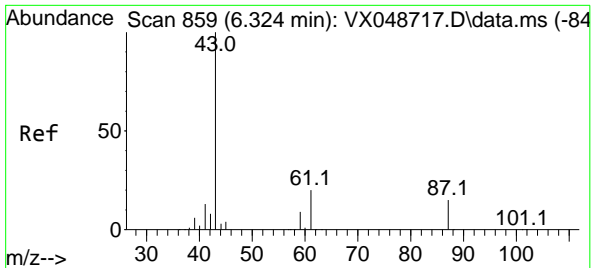
Tgt Ion: 78 Resp: 1362856  
Ion Ratio Lower Upper  
78 100  
77 23.3 18.8 28.2



#42  
1,2-Dichloroethane  
Concen: 3.066 ug/l  
RT: 6.031 min Scan# 811  
Delta R.T. -0.043 min  
Lab File: VX048778.D  
Acq: 09 Dec 2025 13:06

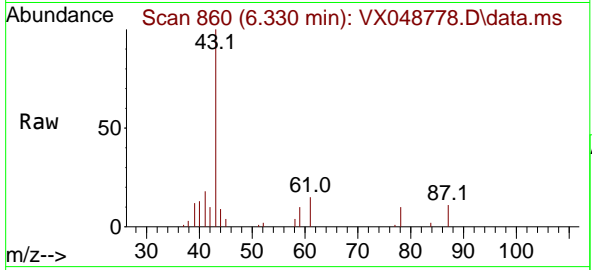
Tgt Ion: 62 Resp: 11034  
Ion Ratio Lower Upper  
62 100  
98 0.0 0.0 20.2





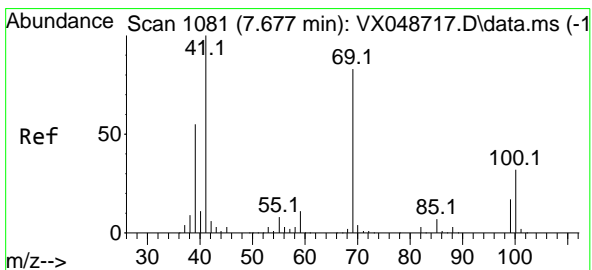
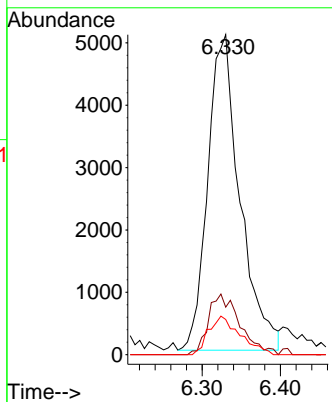
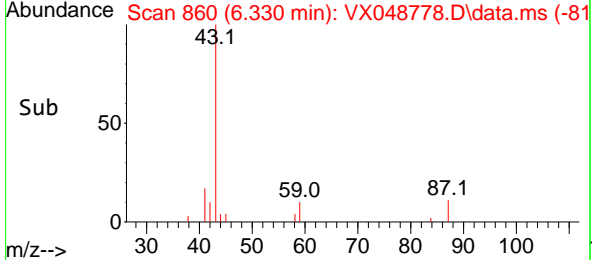
#43  
 Isopropyl Acetate  
 Concen: 2.322 ug/l  
 RT: 6.330 min Scan# 80  
 Delta R.T. 0.006 min  
 Lab File: VX048778.D  
 Acq: 09 Dec 2025 13:06

Instrument :  
 MSVOA\_X  
 ClientSampleId :

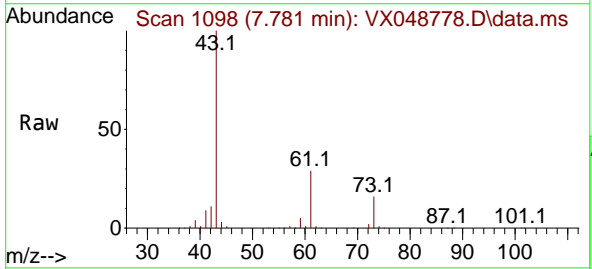


Tgt Ion: 43 Resp: 14411

| Ion | Ratio | Lower | Upper |
|-----|-------|-------|-------|
| 43  | 100   |       |       |
| 61  | 18.9  | 16.8  | 25.2  |
| 87  | 12.0  | 11.8  | 17.6  |

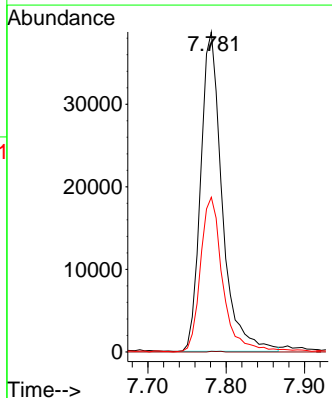
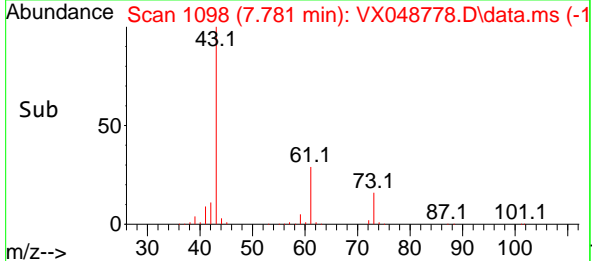


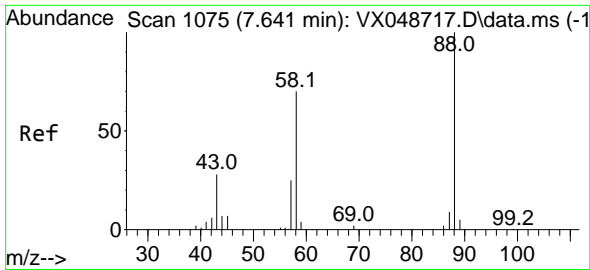
#48  
 Methyl methacrylate  
 Concen: 23.571 ug/l  
 RT: 7.781 min Scan# 1098  
 Delta R.T. 0.104 min  
 Lab File: VX048778.D  
 Acq: 09 Dec 2025 13:06



Tgt Ion: 41 Resp: 73596

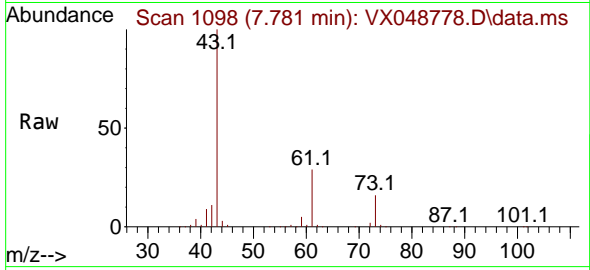
| Ion | Ratio | Lower | Upper  |
|-----|-------|-------|--------|
| 41  | 100   |       |        |
| 69  | 0.1   | 68.5  | 102.7# |
| 39  | 51.0  | 43.5  | 65.3   |



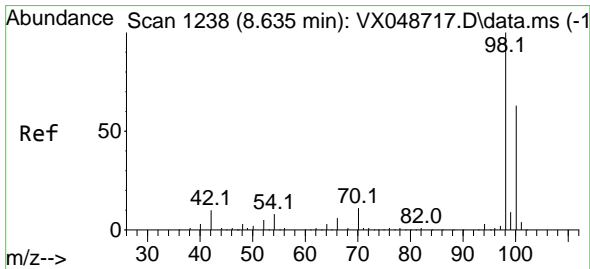
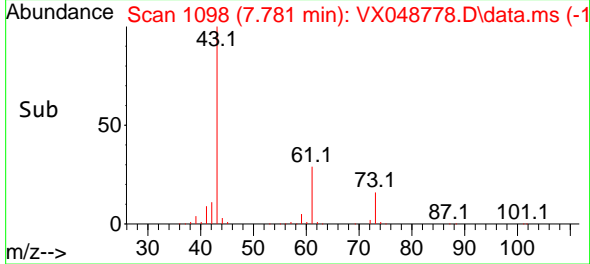
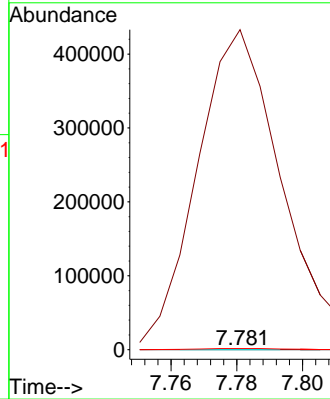


#49  
 1,4-Dioxane  
 Concen: 1.327 ug/l  
 RT: 7.781 min Scan# 1098  
 Delta R.T. 0.140 min  
 Lab File: VX048778.D  
 Acq: 09 Dec 2025 13:06

Instrument :  
 MSVOA\_X  
 ClientSampleId :

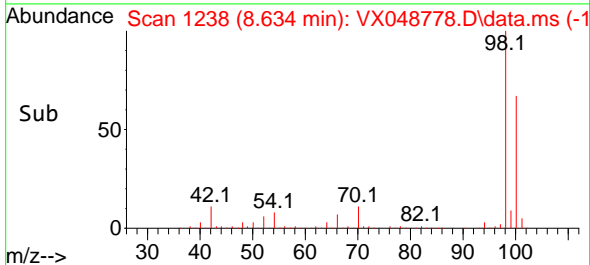
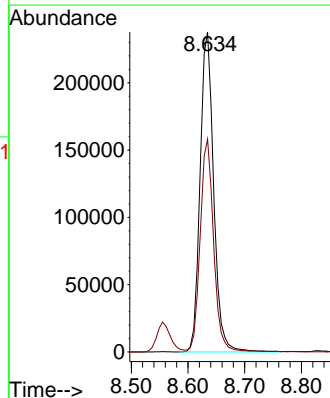
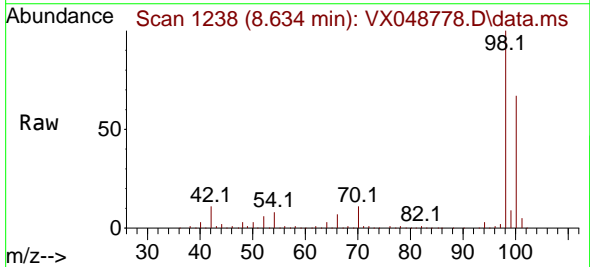


Tgt Ion: 88 Resp: 57  
 Ion Ratio Lower Upper  
 88 100  
 43 1446663.2 28.6 43.0#  
 58 5856.1 58.0 87.0#

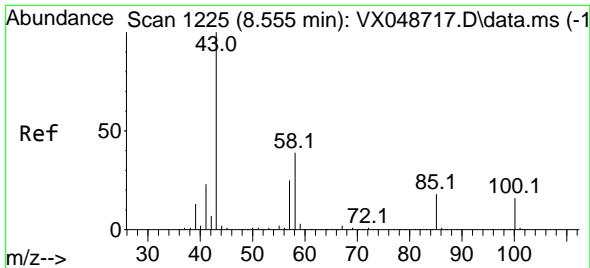


#50  
 Toluene-d8  
 Concen: 45.019 ug/l  
 RT: 8.634 min Scan# 1238  
 Delta R.T. -0.000 min  
 Lab File: VX048778.D  
 Acq: 09 Dec 2025 13:06

Tgt Ion: 98 Resp: 395249  
 Ion Ratio Lower Upper  
 98 100  
 100 65.7 53.4 80.0



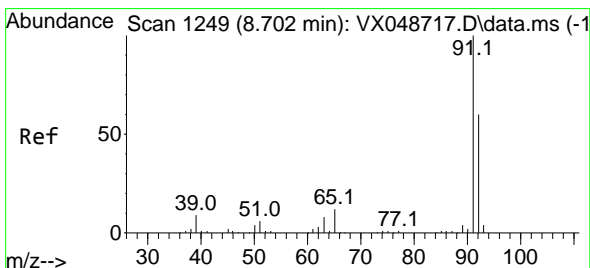
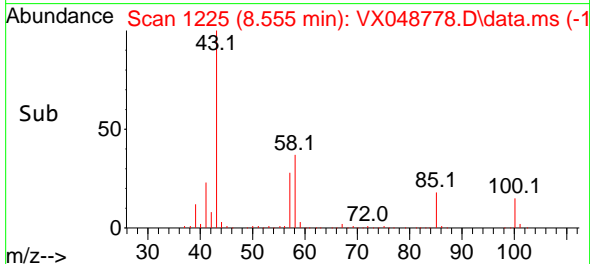
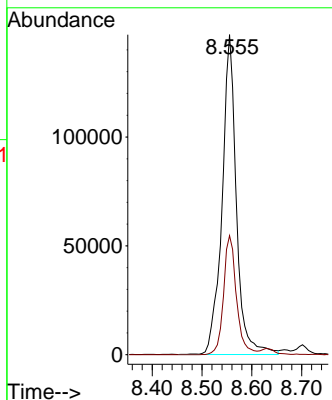
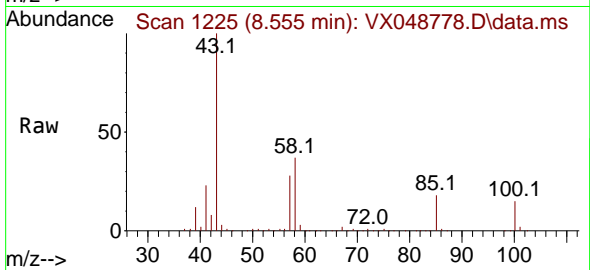




#51  
 4-Methyl-2-Pentanone  
 Concen: 76.332 ug/l  
 RT: 8.555 min Scan# 1225  
 Delta R.T. -0.000 min  
 Lab File: VX048778.D  
 Acq: 09 Dec 2025 13:06

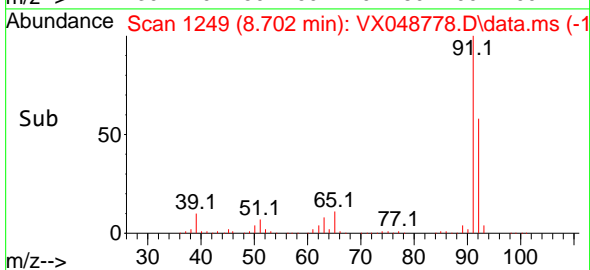
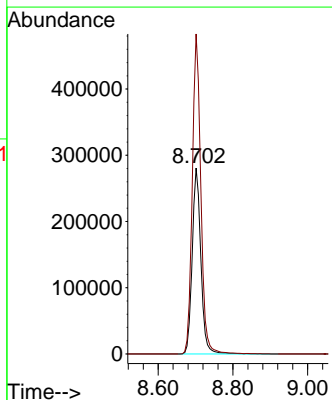
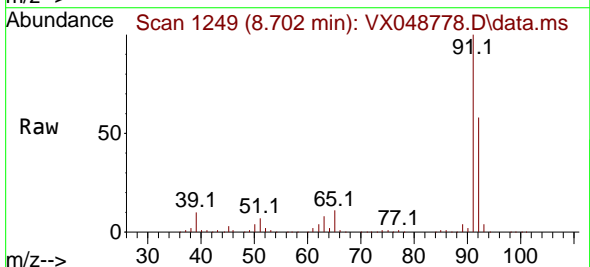
Instrument : MSVOA\_X  
 ClientSampleId :

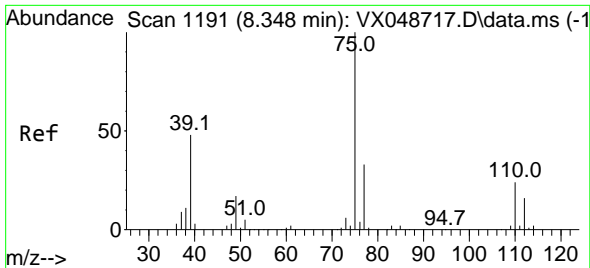
Tgt Ion: 43 Resp: 294081  
 Ion Ratio Lower Upper  
 43 100  
 58 33.4 32.2 48.4



#52  
 Toluene  
 Concen: 73.382 ug/l  
 RT: 8.702 min Scan# 1249  
 Delta R.T. -0.000 min  
 Lab File: VX048778.D  
 Acq: 09 Dec 2025 13:06

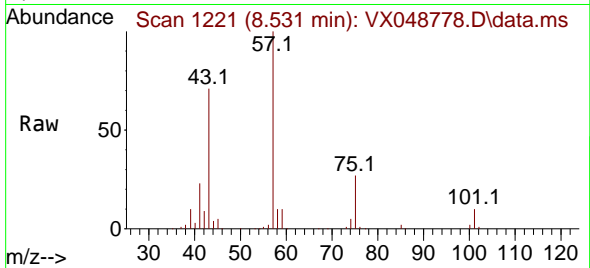
Tgt Ion: 92 Resp: 450003  
 Ion Ratio Lower Upper  
 92 100  
 91 170.3 136.3 204.5





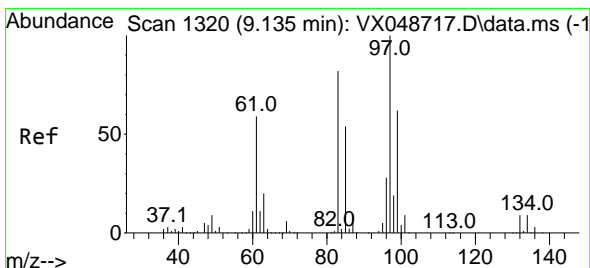
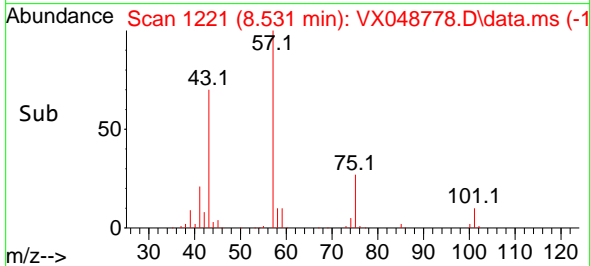
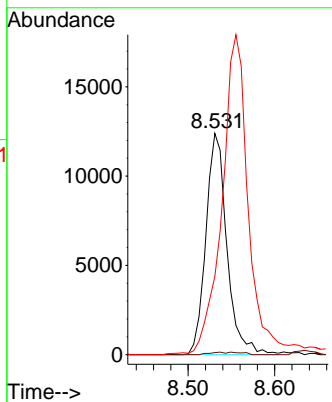
#54  
 cis-1,3-Dichloropropene  
 Concen: 5.078 ug/l  
 RT: 8.531 min Scan# 1191  
 Delta R.T. 0.183 min  
 Lab File: VX048778.D  
 Acq: 09 Dec 2025 13:06

Instrument :  
 MSVOA\_X  
 ClientSampleId :

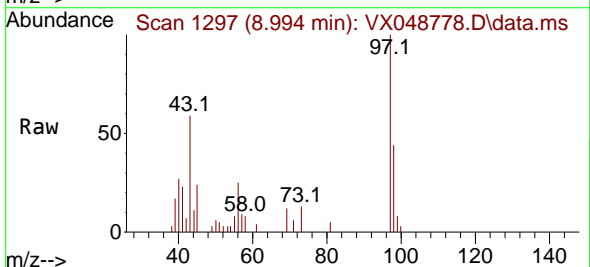


Tgt Ion: 75 Resp: 20866

| Ion | Ratio | Lower | Upper |
|-----|-------|-------|-------|
| 75  | 100   |       |       |
| 77  | 1.0   | 26.1  | 39.1# |
| 39  | 34.6  | 38.2  | 57.4# |

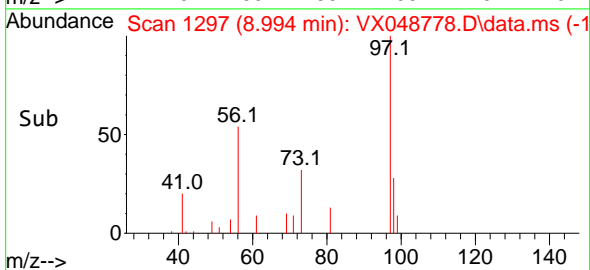
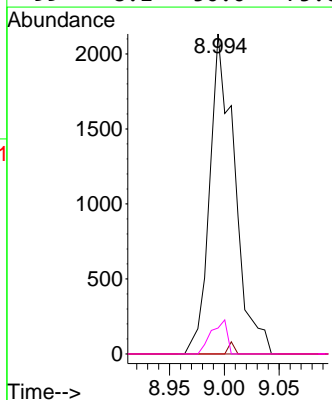


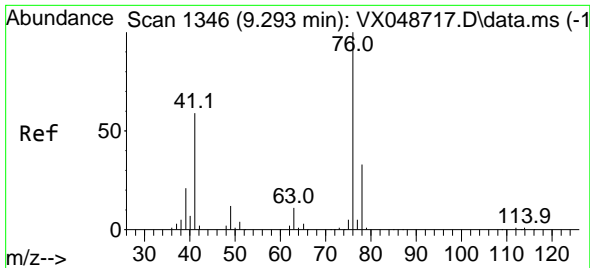
#55  
 1,1,2-Trichloroethane  
 Concen: 1.373 ug/l  
 RT: 8.994 min Scan# 1297  
 Delta R.T. -0.140 min  
 Lab File: VX048778.D  
 Acq: 09 Dec 2025 13:06



Tgt Ion: 97 Resp: 3387

| Ion | Ratio | Lower | Upper |
|-----|-------|-------|-------|
| 97  | 100   |       |       |
| 83  | 0.0   | 66.0  | 99.0# |
| 85  | 0.0   | 43.2  | 64.8# |
| 99  | 8.1   | 50.0  | 75.0# |

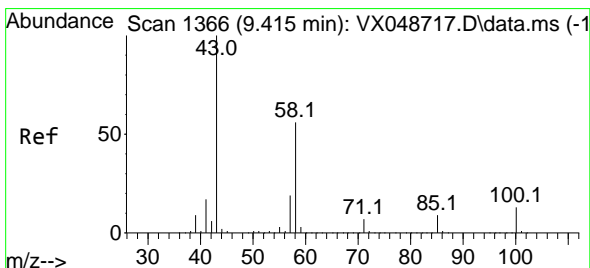
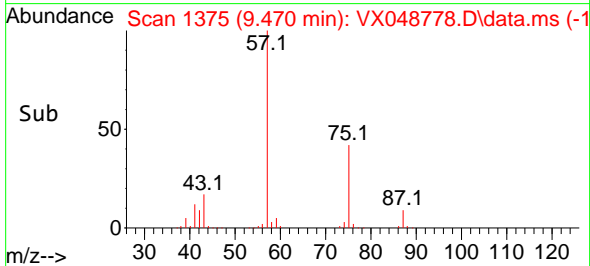
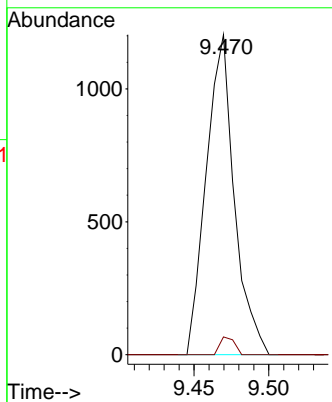
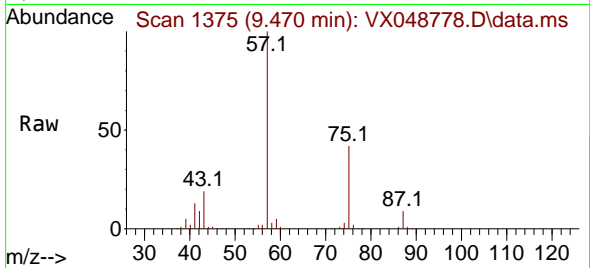




#57  
 1,3-Dichloropropane  
 Concen: 0.383 ug/l  
 RT: 9.470 min Scan# 11  
 Delta R.T. 0.177 min  
 Lab File: VX048778.D  
 Acq: 09 Dec 2025 13:06

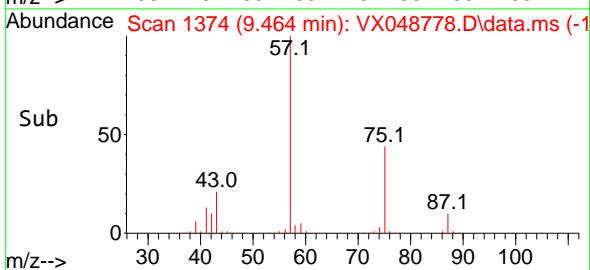
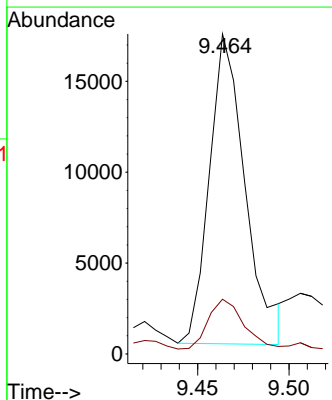
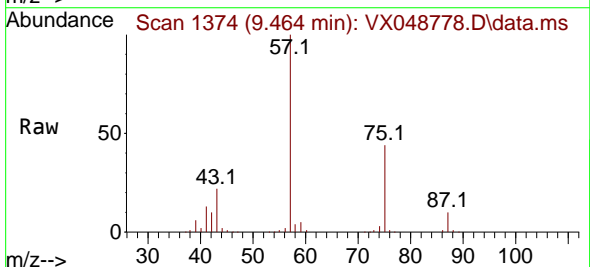
Instrument :  
 MSVOA\_X  
 ClientSampleId :

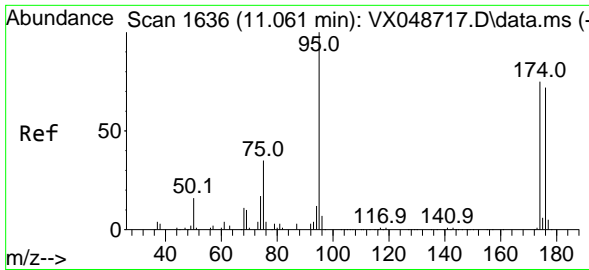
Tgt Ion: 76 Resp: 1571  
 Ion Ratio Lower Upper  
 76 100  
 78 2.9 26.0 39.0#



#59  
 2-Hexanone  
 Concen: 8.578 ug/l  
 RT: 9.464 min Scan# 1374  
 Delta R.T. 0.049 min  
 Lab File: VX048778.D  
 Acq: 09 Dec 2025 13:06

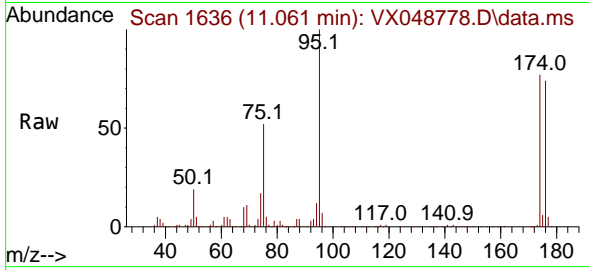
Tgt Ion: 43 Resp: 23199  
 Ion Ratio Lower Upper  
 43 100  
 58 16.4 27.8 83.4#



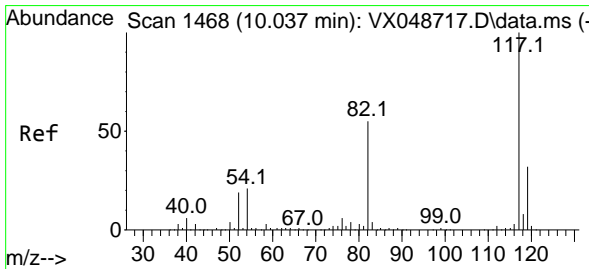
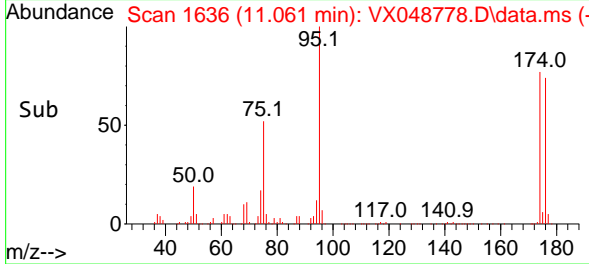
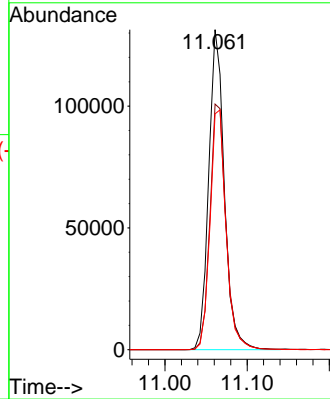


#62  
 4-Bromofluorobenzene  
 Concen: 57.103 ug/l  
 RT: 11.061 min Scan# 1  
 Delta R.T. -0.000 min  
 Lab File: VX048778.D  
 Acq: 09 Dec 2025 13:06

Instrument :  
 MSVOA\_X  
 ClientSampleId :

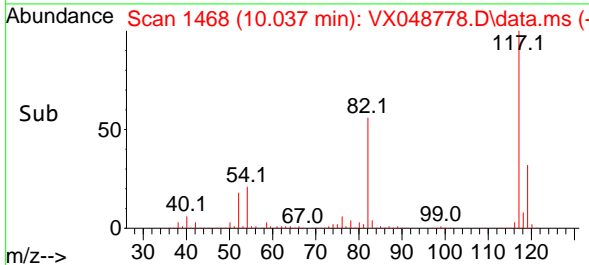
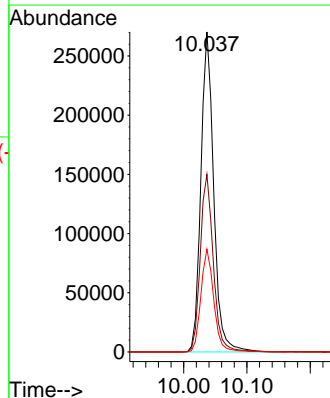
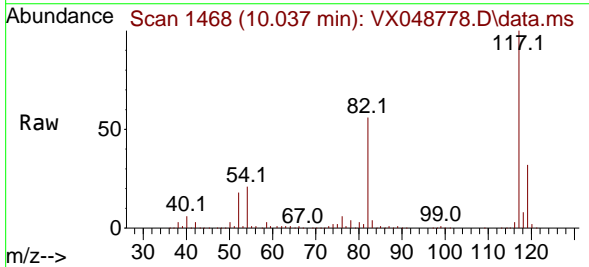


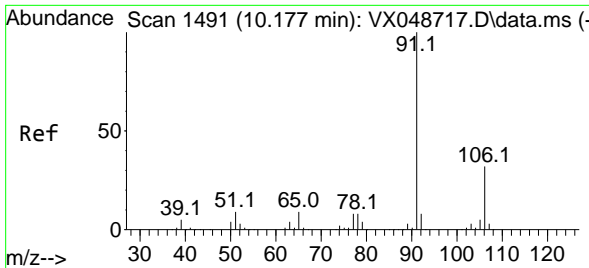
Tgt Ion: 95 Resp: 172878  
 Ion Ratio Lower Upper  
 95 100  
 174 79.4 0.0 157.8  
 176 76.9 0.0 154.0



#63  
 Chlorobenzene-d5  
 Concen: 50.000 ug/l  
 RT: 10.037 min Scan# 1468  
 Delta R.T. -0.000 min  
 Lab File: VX048778.D  
 Acq: 09 Dec 2025 13:06

Tgt Ion: 117 Resp: 381897  
 Ion Ratio Lower Upper  
 117 100  
 82 55.5 44.1 66.1  
 119 32.1 25.2 37.8

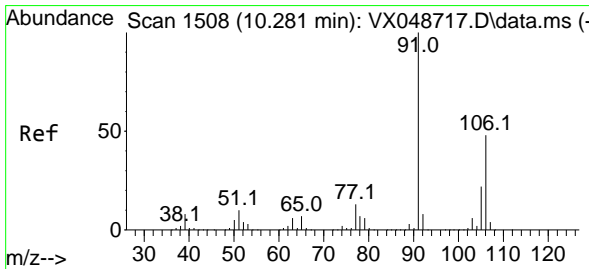
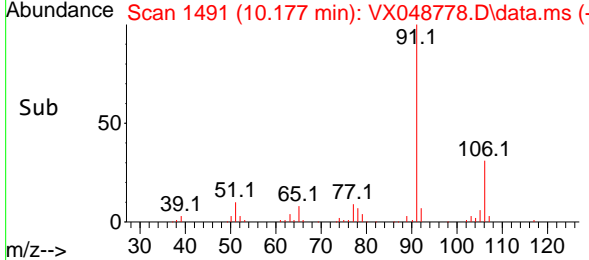
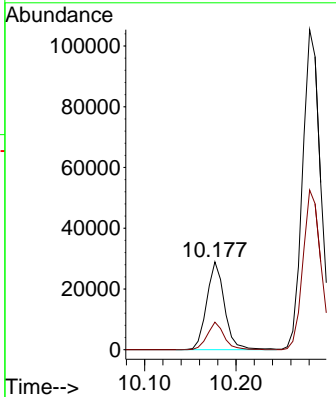
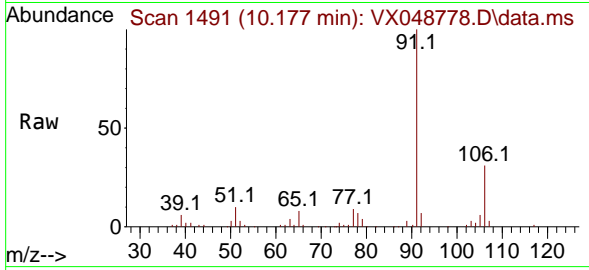




#67  
 Ethyl Benzene  
 Concen: 2.862 ug/l  
 RT: 10.177 min Scan# 1491  
 Delta R.T. -0.000 min  
 Lab File: VX048778.D  
 Acq: 09 Dec 2025 13:06

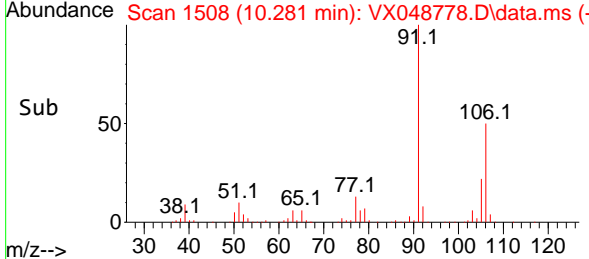
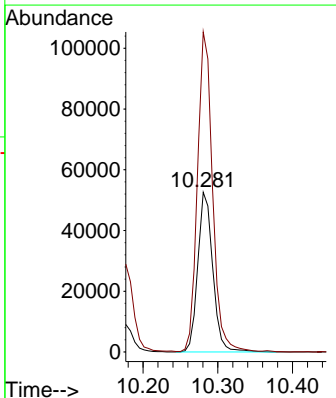
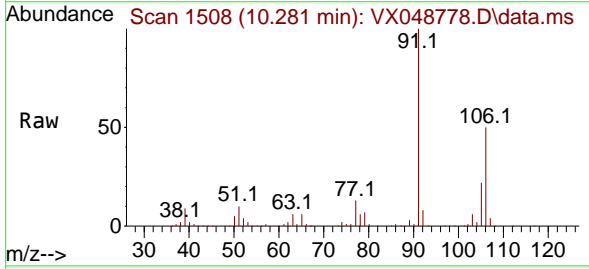
Instrument : MSVOA\_X  
 ClientSampleId :

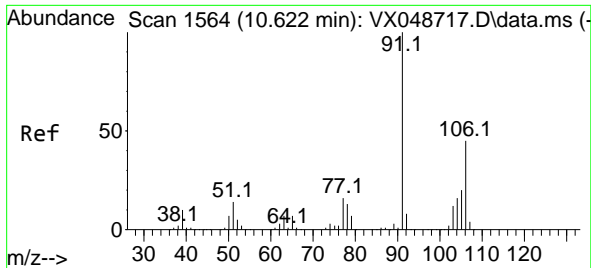
Tgt Ion: 91 Resp: 39039  
 Ion Ratio Lower Upper  
 91 100  
 106 31.4 25.3 37.9



#68  
 m/p-Xylenes  
 Concen: 13.795 ug/l  
 RT: 10.281 min Scan# 1508  
 Delta R.T. -0.000 min  
 Lab File: VX048778.D  
 Acq: 09 Dec 2025 13:06

Tgt Ion: 106 Resp: 73302  
 Ion Ratio Lower Upper  
 106 100  
 91 200.6 164.2 246.4

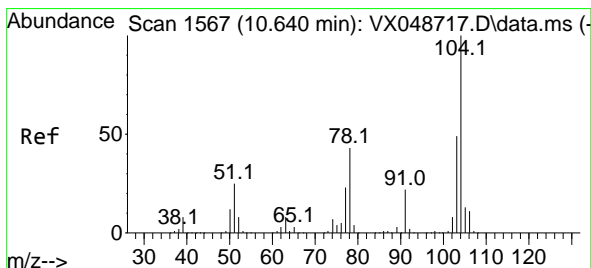
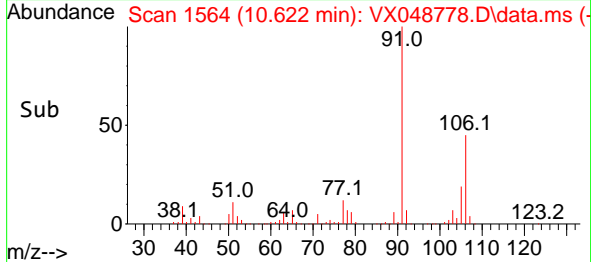
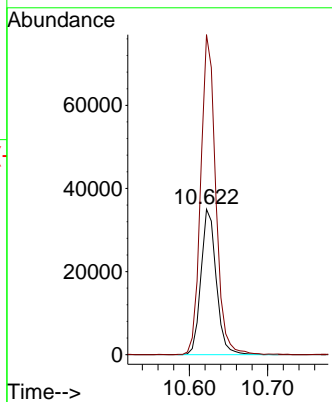
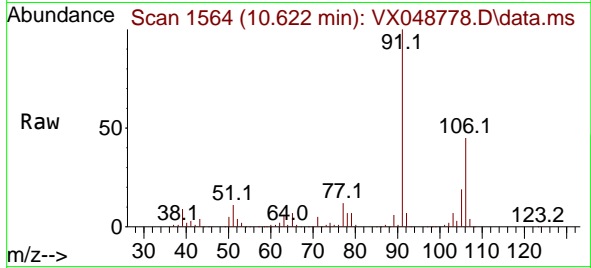




#69  
 o-Xylene  
 Concen: 9.503 ug/l  
 RT: 10.622 min Scan# 1564  
 Delta R.T. -0.000 min  
 Lab File: VX048778.D  
 Acq: 09 Dec 2025 13:06

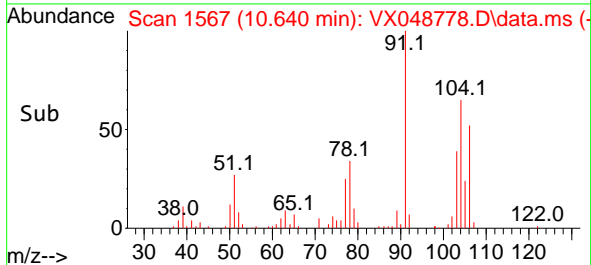
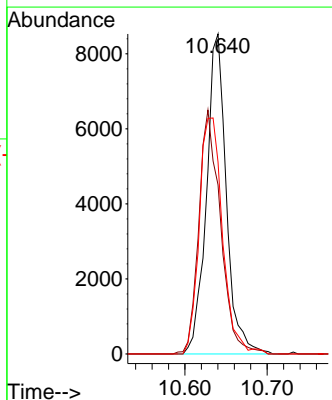
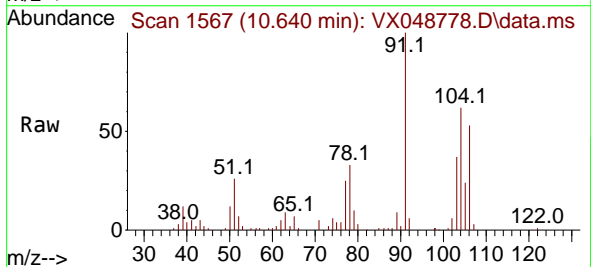
Instrument : MSVOA\_X  
 ClientSampleId :

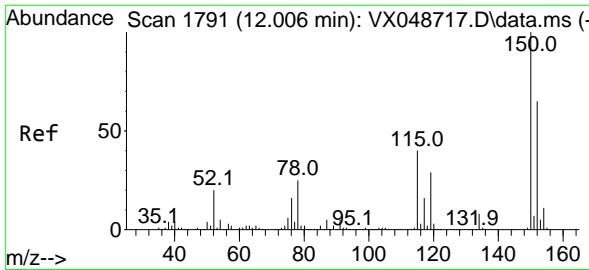
Tgt Ion:106 Resp: 47315  
 Ion Ratio Lower Upper  
 106 100  
 91 216.7 108.1 324.3



#70  
 Styrene  
 Concen: 1.677 ug/l  
 RT: 10.640 min Scan# 1567  
 Delta R.T. -0.000 min  
 Lab File: VX048778.D  
 Acq: 09 Dec 2025 13:06

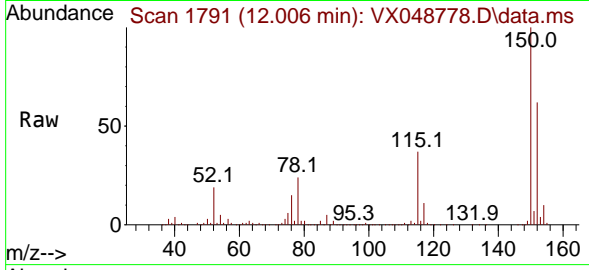
Tgt Ion:104 Resp: 14331  
 Ion Ratio Lower Upper  
 104 100  
 78 82.9 40.6 60.8#  
 103 86.5 43.4 65.2#



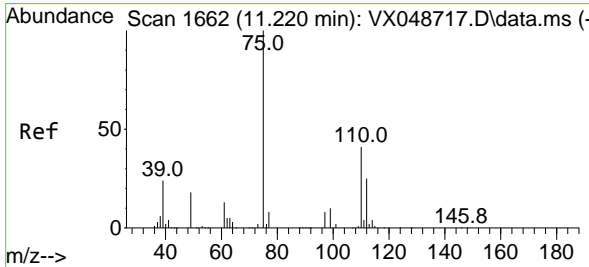
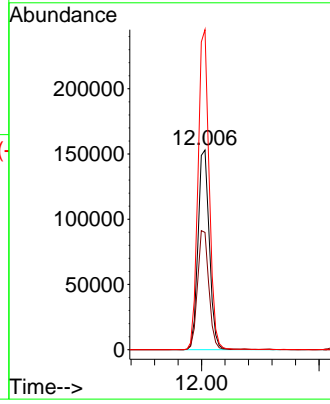
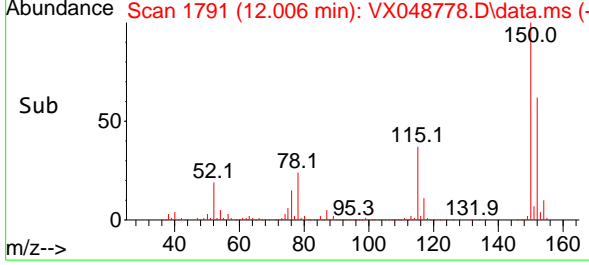


#72  
 1,4-Dichlorobenzene-d4  
 Concen: 50.000 ug/l  
 RT: 12.006 min Scan# 11  
 Delta R.T. -0.000 min  
 Lab File: VX048778.D  
 Acq: 09 Dec 2025 13:06

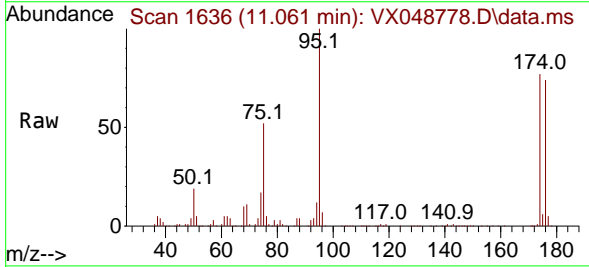
Instrument :  
 MSVOA\_X  
 ClientSampleId :



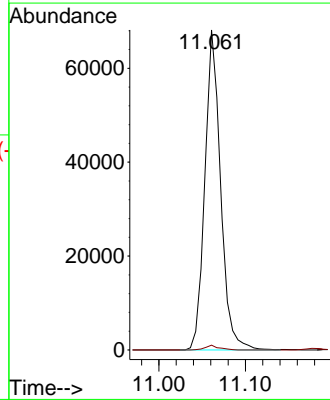
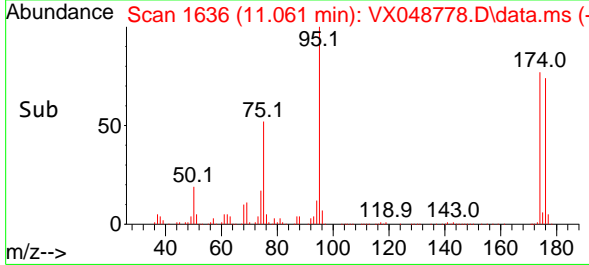
Tgt Ion:152 Resp: 204856  
 Ion Ratio Lower Upper  
 152 100  
 115 59.3 42.1 126.4  
 150 157.2 0.0 347.8

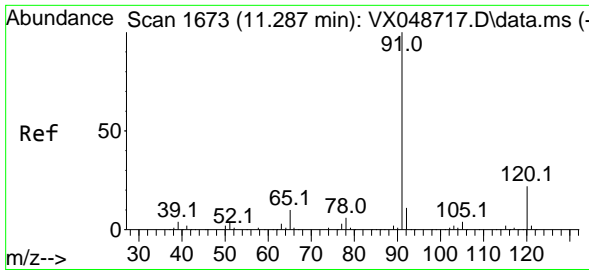


#76  
 1,2,3-Trichloropropane  
 Concen: 22.580 ug/l  
 RT: 11.061 min Scan# 1636  
 Delta R.T. -0.159 min  
 Lab File: VX048778.D  
 Acq: 09 Dec 2025 13:06



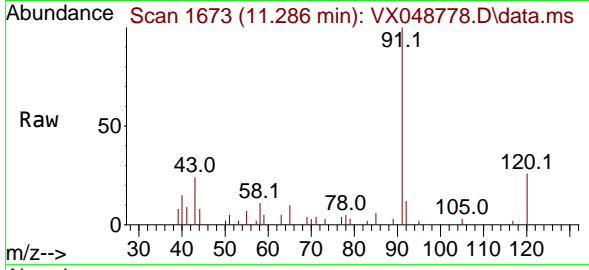
Tgt Ion: 75 Resp: 86153  
 Ion Ratio Lower Upper  
 75 100  
 77 1.3 24.3 73.0#



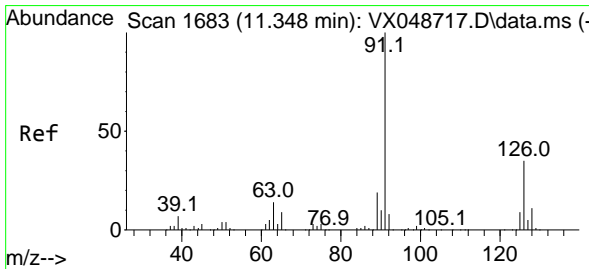
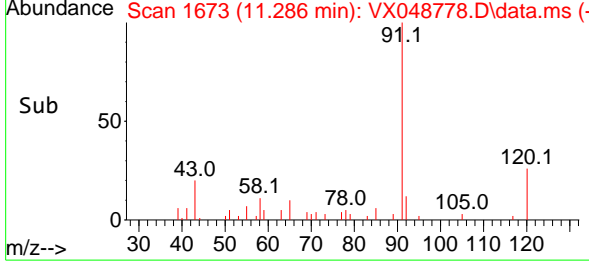
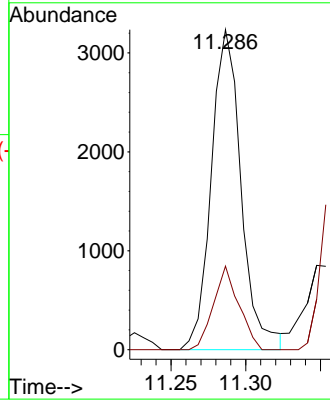


#78  
 n-propylbenzene  
 Concen: 0.281 ug/l  
 RT: 11.286 min Scan# 1673  
 Delta R.T. -0.000 min  
 Lab File: VX048778.D  
 Acq: 09 Dec 2025 13:06

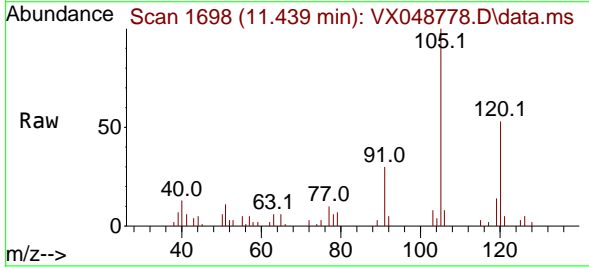
Instrument : MSVOA\_X  
 ClientSampleId :



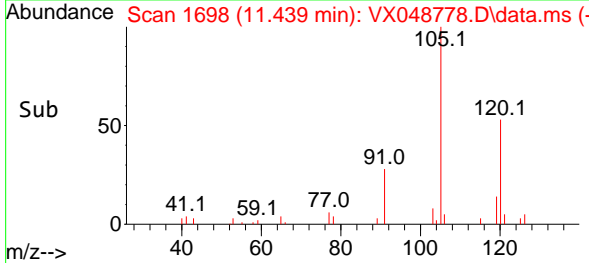
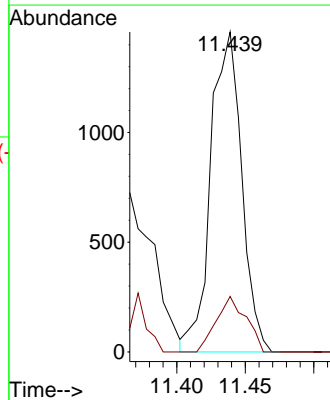
Tgt Ion: 91 Resp: 4497  
 Ion Ratio Lower Upper  
 91 100  
 120 22.2 11.4 34.2



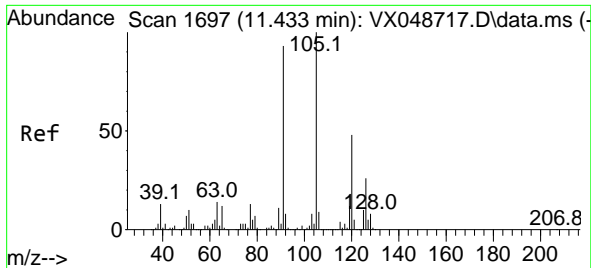
#79  
 2-Chlorotoluene  
 Concen: 0.234 ug/l  
 RT: 11.439 min Scan# 1698  
 Delta R.T. 0.091 min  
 Lab File: VX048778.D  
 Acq: 09 Dec 2025 13:06



Tgt Ion: 91 Resp: 2280  
 Ion Ratio Lower Upper  
 91 100  
 126 16.8 16.8 50.3

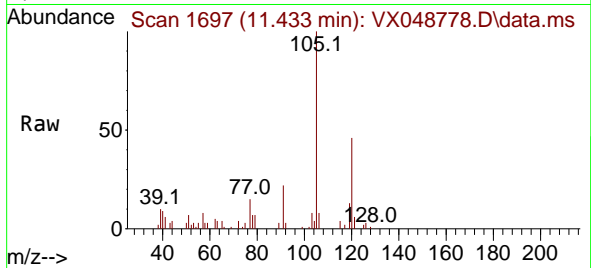




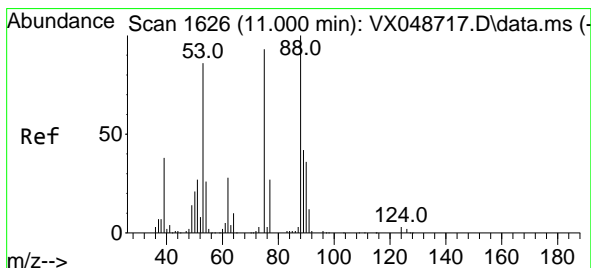
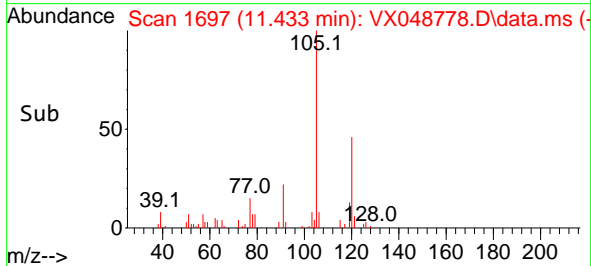
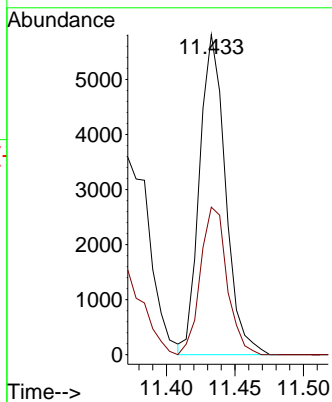


#80  
 1,3,5-Trimethylbenzene  
 Concen: 0.674 ug/l  
 RT: 11.433 min Scan# 11  
 Delta R.T. -0.000 min  
 Lab File: VX048778.D  
 Acq: 09 Dec 2025 13:06

Instrument : MSVOA\_X  
 ClientSampleId :

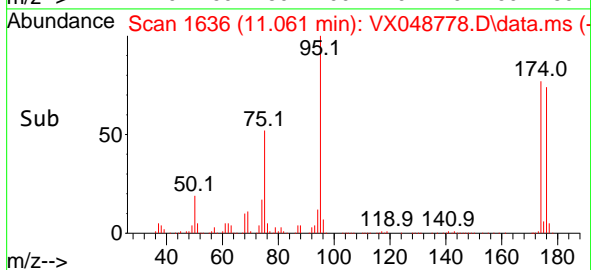
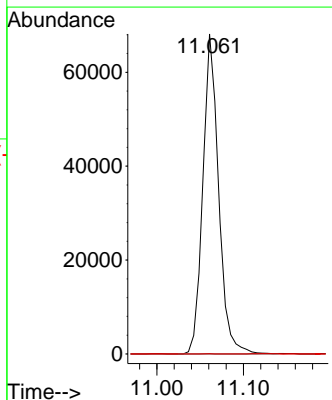
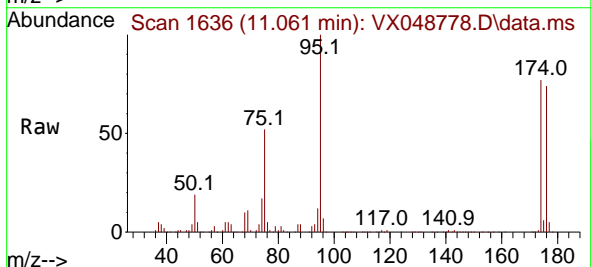


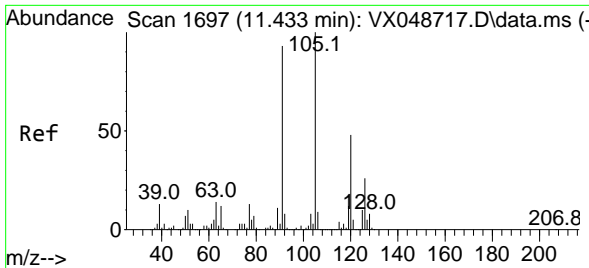
Tgt Ion: 105 Resp: 7650  
 Ion Ratio Lower Upper  
 105 100  
 120 47.2 24.4 73.2



#81  
 trans-1,4-Dichloro-2-butene  
 Concen: 53.636 ug/l  
 RT: 11.061 min Scan# 1636  
 Delta R.T. 0.061 min  
 Lab File: VX048778.D  
 Acq: 09 Dec 2025 13:06

Tgt Ion: 75 Resp: 86153  
 Ion Ratio Lower Upper  
 75 100  
 53 0.0 79.9 119.9#  
 89 0.0 67.1 100.7#

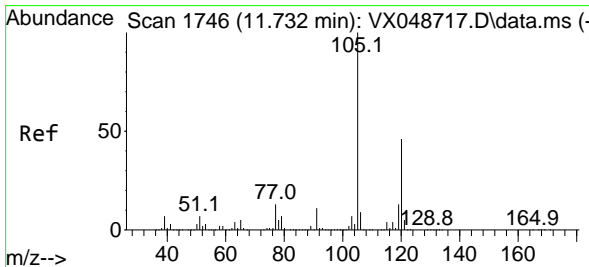
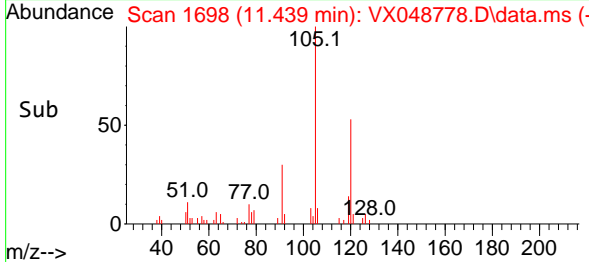
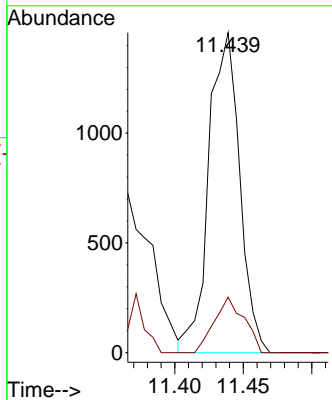
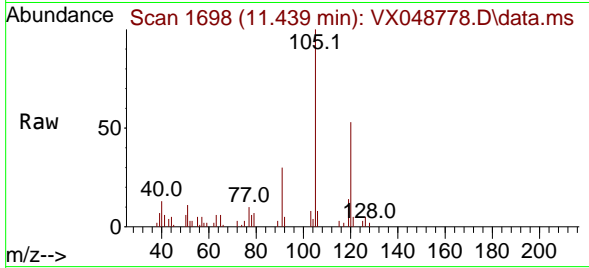




#82  
 4-Chlorotoluene  
 Concen: 0.200 ug/l  
 RT: 11.439 min Scan# 11  
 Delta R.T. 0.006 min  
 Lab File: VX048778.D  
 Acq: 09 Dec 2025 13:06

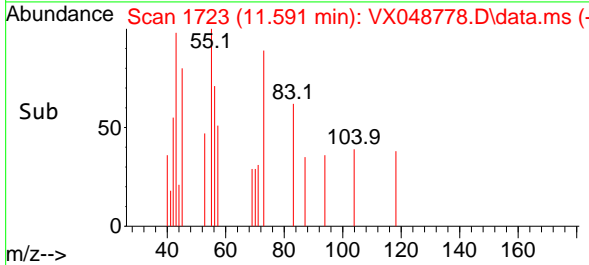
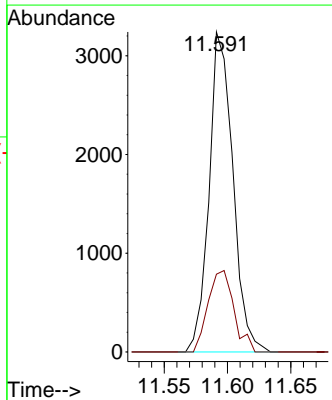
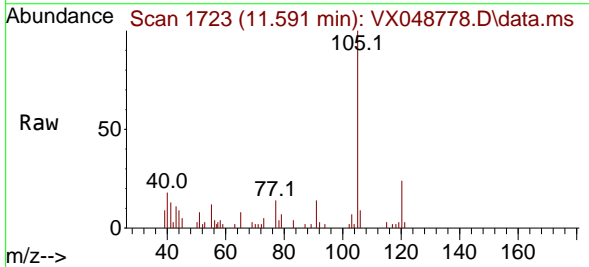
Instrument : MSVOA\_X  
 ClientSampleId :

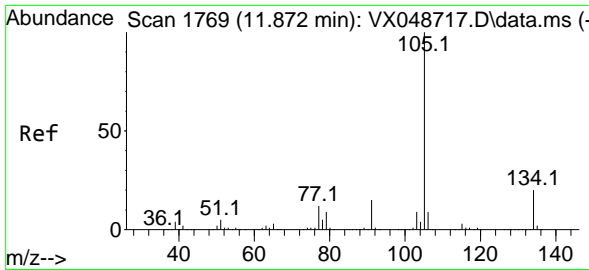
Tgt Ion: 91 Resp: 2280  
 Ion Ratio Lower Upper  
 91 100  
 126 16.8 14.7 44.1



#84  
 1,2,4-Trimethylbenzene  
 Concen: 0.370 ug/l  
 RT: 11.591 min Scan# 1723  
 Delta R.T. -0.140 min  
 Lab File: VX048778.D  
 Acq: 09 Dec 2025 13:06

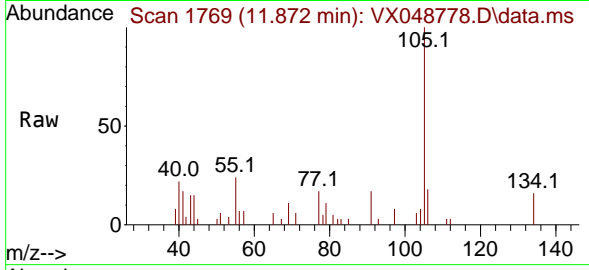
Tgt Ion: 105 Resp: 4235  
 Ion Ratio Lower Upper  
 105 100  
 120 27.6 22.3 66.8



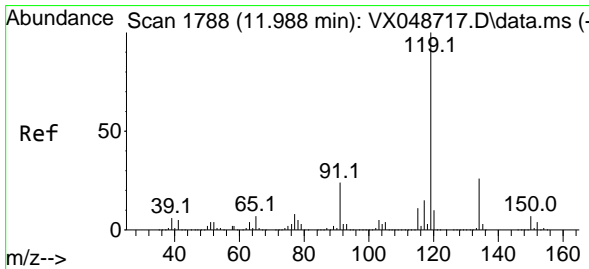
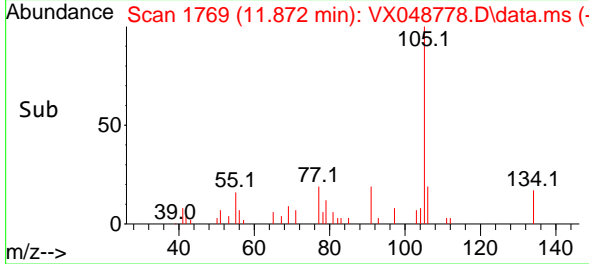
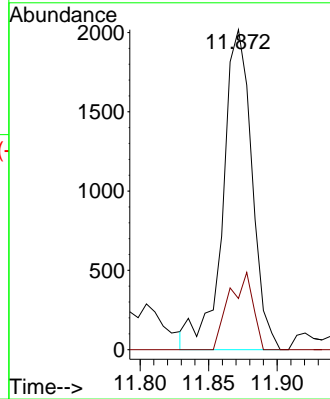


#85  
 sec-Butylbenzene  
 Concen: 0.209 ug/l  
 RT: 11.872 min Scan# 1769  
 Delta R.T. -0.000 min  
 Lab File: VX048778.D  
 Acq: 09 Dec 2025 13:06

Instrument : MSVOA\_X  
 ClientSampleId :

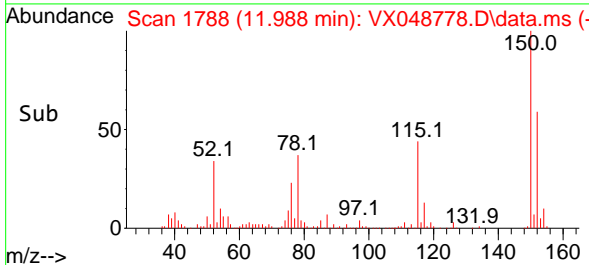
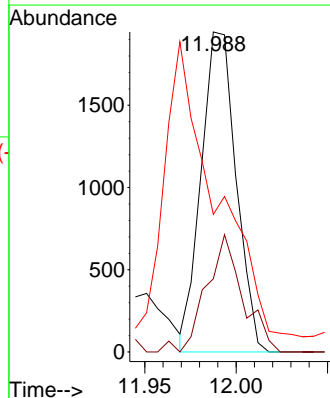
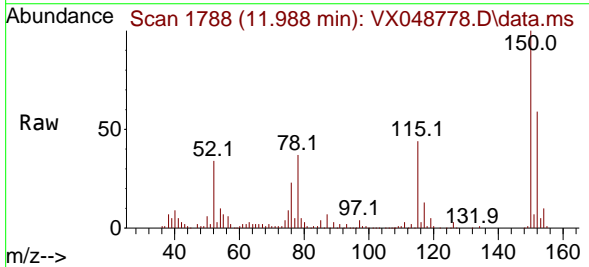


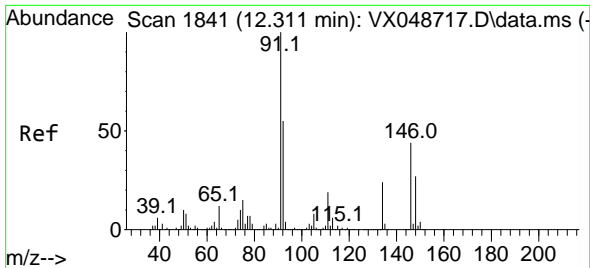
Tgt Ion:105 Resp: 2980  
 Ion Ratio Lower Upper  
 105 100  
 134 19.8 9.8 29.5



#86  
 p-Isopropyltoluene  
 Concen: 0.212 ug/l  
 RT: 11.988 min Scan# 1788  
 Delta R.T. -0.000 min  
 Lab File: VX048778.D  
 Acq: 09 Dec 2025 13:06

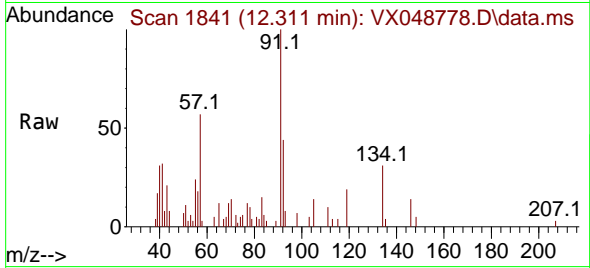
Tgt Ion:119 Resp: 2594  
 Ion Ratio Lower Upper  
 119 100  
 134 38.3 13.1 39.3  
 91 0.0 11.8 35.4#





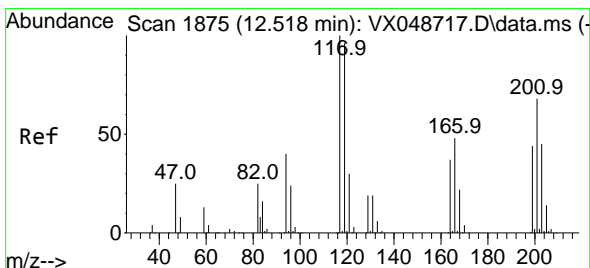
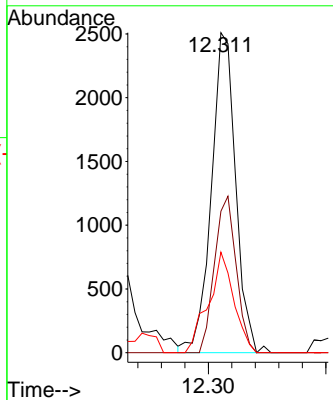
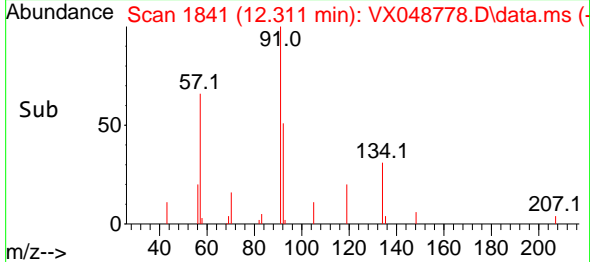
#89  
 n-Butylbenzene  
 Concen: 0.316 ug/l  
 RT: 12.311 min Scan# 1841  
 Delta R.T. -0.000 min  
 Lab File: VX048778.D  
 Acq: 09 Dec 2025 13:06

Instrument : MSVOA\_X  
 ClientSampleId :

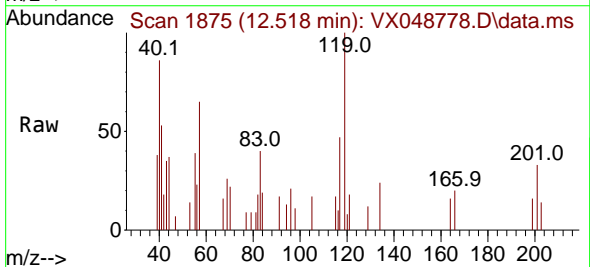


Tgt Ion: 91 Resp: 3610

| Ion | Ratio | Lower | Upper |
|-----|-------|-------|-------|
| 91  | 100   |       |       |
| 92  | 43.6  | 27.1  | 81.3  |
| 134 | 32.7  | 12.9  | 38.6  |

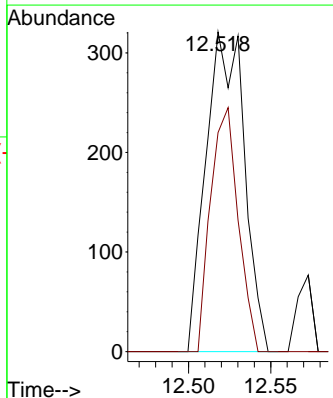
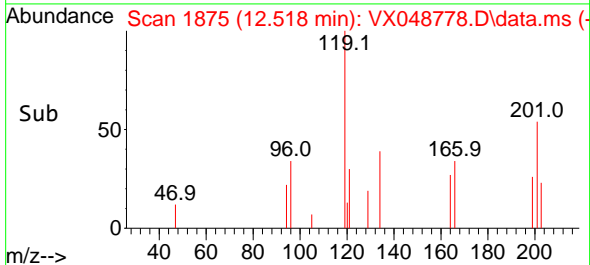


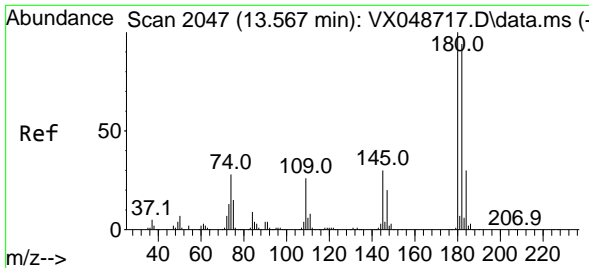
#90  
 Hexachloroethane  
 Concen: 0.209 ug/l  
 RT: 12.518 min Scan# 1875  
 Delta R.T. -0.000 min  
 Lab File: VX048778.D  
 Acq: 09 Dec 2025 13:06



Tgt Ion: 117 Resp: 520

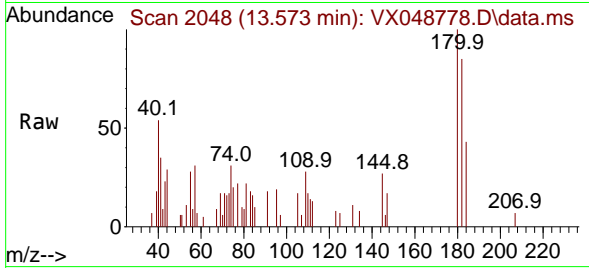
| Ion | Ratio | Lower | Upper |
|-----|-------|-------|-------|
| 117 | 100   |       |       |
| 201 | 55.0  | 36.4  | 109.1 |



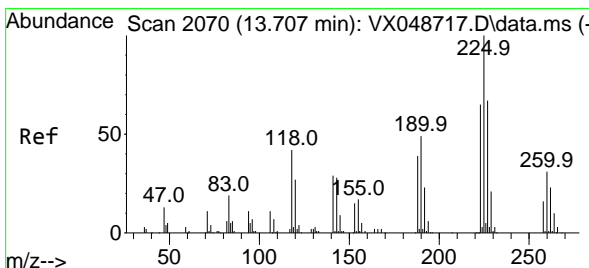
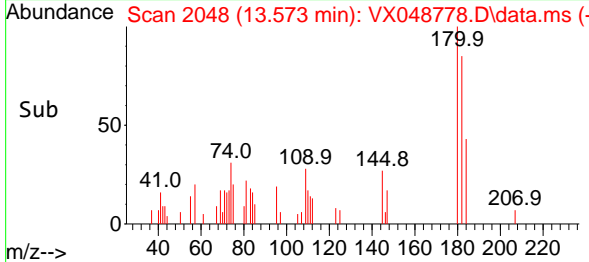
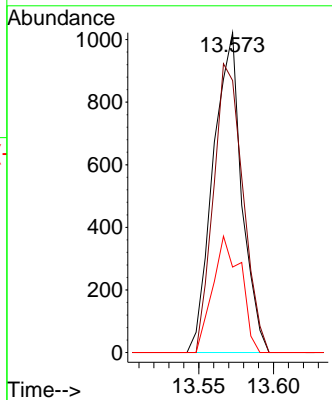


#93  
 1,2,4-Trichlorobenzene  
 Concen: 0.313 ug/l  
 RT: 13.573 min Scan# 2048  
 Delta R.T. 0.006 min  
 Lab File: VX048778.D  
 Acq: 09 Dec 2025 13:06

Instrument : MSVOA\_X  
 ClientSampleId :

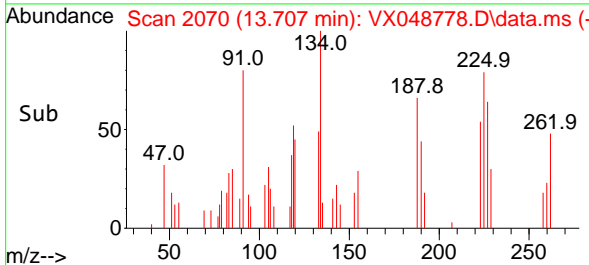
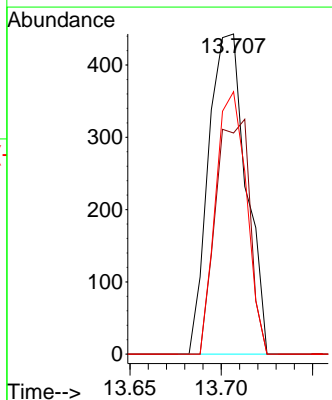
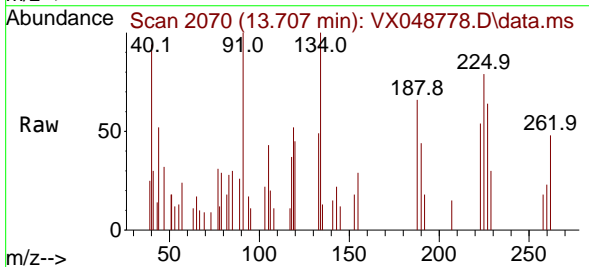


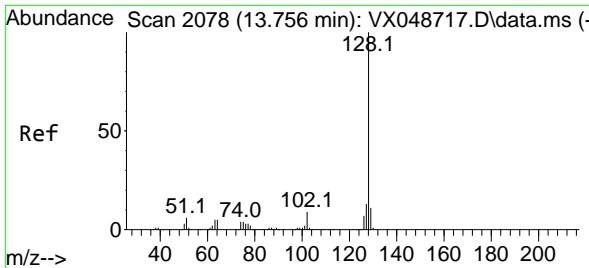
Tgt Ion:180 Resp: 1363  
 Ion Ratio Lower Upper  
 180 100  
 182 92.8 46.9 140.8  
 145 35.6 15.1 45.3



#94  
 Hexachlorobutadiene  
 Concen: 0.352 ug/l  
 RT: 13.707 min Scan# 2070  
 Delta R.T. -0.000 min  
 Lab File: VX048778.D  
 Acq: 09 Dec 2025 13:06

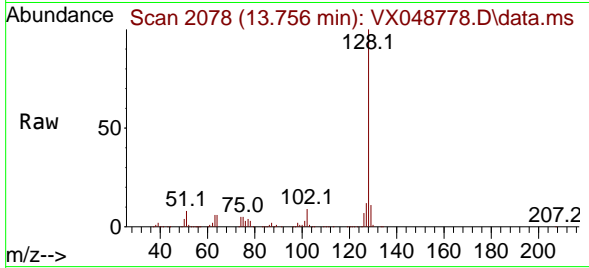
Tgt Ion:225 Resp: 634  
 Ion Ratio Lower Upper  
 225 100  
 223 66.6 33.0 98.9  
 227 67.4 32.9 98.7



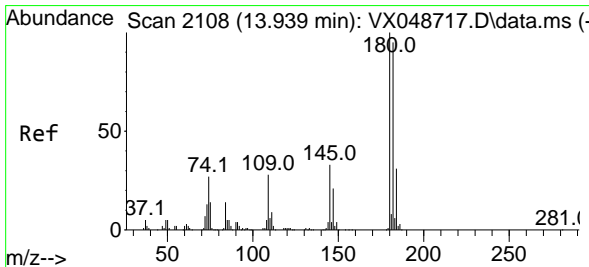
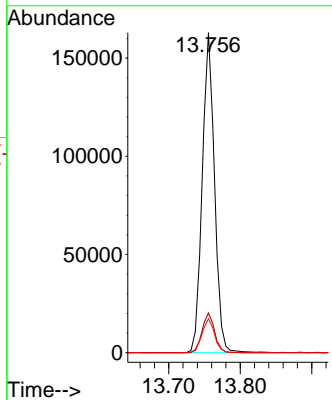
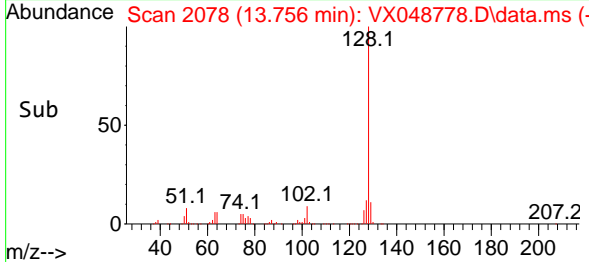


#95  
 Naphthalene  
 Concen: 16.976 ug/l  
 RT: 13.756 min Scan# 2078  
 Delta R.T. -0.000 min  
 Lab File: VX048778.D  
 Acq: 09 Dec 2025 13:06

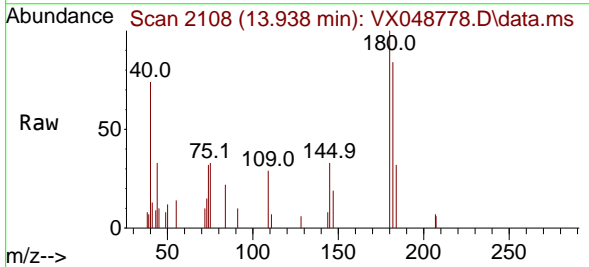
Instrument : MSVOA\_X  
 ClientSampled :



Tgt Ion:128 Resp: 194012  
 Ion Ratio Lower Upper  
 128 100  
 127 12.6 10.2 15.2  
 129 10.9 8.6 13.0



#96  
 1,2,3-Trichlorobenzene  
 Concen: 0.295 ug/l  
 RT: 13.938 min Scan# 2108  
 Delta R.T. -0.000 min  
 Lab File: VX048778.D  
 Acq: 09 Dec 2025 13:06



Tgt Ion:180 Resp: 1184  
 Ion Ratio Lower Upper  
 180 100  
 182 103.0 48.0 144.2  
 145 34.5 16.6 49.8

