

Data Path : Z:\voasrv\HPCHEM1\MSVOA\_X\Data\VX120925\  
 Data File : VX048778.D  
 Acq On : 09 Dec 2025 13:06  
 Operator : JC/MD  
 Sample : Q3803-02  
 Misc : 5.0mL/MSVOA\_X/WATER  
 ALS Vial : 12 Sample Multiplier: 1

Instrument :  
 MSVOA\_X  
 ClientSampleId :  
 CHASE-B

Quant Time: Dec 10 00:20:20 2025  
 Quant Method : Z:\voasrv\HPCHEM1\MSVOA\_X\Method\82X120425W.M  
 Quant Title : SW846 8260  
 QLast Update : Fri Dec 05 03:27:34 2025  
 Response via : Initial Calibration

Compound	R.T.	QIon	Response	Conc	Units	Dev(Min)
Internal Standards						
1) Pentafluorobenzene	5.537	168	177204	50.000	ug/l	0.00
34) 1,4-Difluorobenzene	6.745	114	363764	50.000	ug/l	0.00
63) Chlorobenzene-d5	10.037	117	381897	50.000	ug/l	0.00
72) 1,4-Dichlorobenzene-d4	12.006	152	204856	50.000	ug/l	0.00
System Monitoring Compounds						
33) 1,2-Dichloroethane-d4	5.940	65	126167	53.047	ug/l	0.00
Spiked Amount	50.000	Range 78 - 117	Recovery	=	106.100%	
35) Dibromofluoromethane	5.373	113	109009	43.523	ug/l	0.00
Spiked Amount	50.000	Range 75 - 124	Recovery	=	87.040%	
50) Toluene-d8	8.634	98	395249	45.019	ug/l	0.00
Spiked Amount	50.000	Range 92 - 112	Recovery	=	90.040%#	
62) 4-Bromofluorobenzene	11.061	95	172878	57.103	ug/l	0.00
Spiked Amount	50.000	Range 83 - 123	Recovery	=	114.200%	
Target Compounds						
						Qvalue
5) Bromomethane	1.630	94	476	0.317	ug/l #	72
10) Methyl Iodide	2.465	142	1443	0.503	ug/l #	95
11) Tert butyl alcohol	2.934	59	4812	12.531	ug/l	98
13) Acrolein	2.245	56	756	41.889	ug/l #	1
15) Acrylonitrile	3.068	53	1635	1.366	ug/l #	74
16) Acetone	2.373	43	97728	107.334	ug/l	97
17) Carbon Disulfide	2.520	76	2017	0.338	ug/l	100
18) Methyl Acetate	2.703	43	9631	3.759	ug/l	95
20) Methylene Chloride	2.788	84	124163	54.557	ug/l	97
25) 2-Butanone	4.550	43	16468	12.255	ug/l	94
29) Tetrahydrofuran	5.025	42	2400	2.339	ug/l #	36
31) Cyclohexane	5.458	56	1006	0.313	ug/l #	65
36) 1,1-Dichloropropene	5.537	75	13833	4.032	ug/l #	48
37) Ethyl Acetate	4.550	43	16468	4.017	ug/l #	71
38) Carbon Tetrachloride	5.531	117	17373	4.471	ug/l #	14
39) Methylcyclohexane	7.366	83	831	0.205	ug/l #	83
40) Benzene	6.025	78	1362856	134.014	ug/l	100
42) 1,2-Dichloroethane	6.031	62	11034	3.066	ug/l #	73
43) Isopropyl Acetate	6.330	43	14411	2.322	ug/l	95
48) Methyl methacrylate	7.781	41	73596	23.571	ug/l #	41
49) 1,4-Dioxane	7.781	88	57	1.327	ug/l #	1
51) 4-Methyl-2-Pentanone	8.555	43	294081	76.332	ug/l	89
52) Toluene	8.702	92	450003	73.382	ug/l	100
54) cis-1,3-Dichloropropene	8.531	75	20866	5.078	ug/l #	66
55) 1,1,2-Trichloroethane	8.994	97	3387	1.373	ug/l #	19
57) 1,3-Dichloropropane	9.470	76	1571	0.383	ug/l #	47
59) 2-Hexanone	9.464	43	23199	8.578	ug/l #	46
67) Ethyl Benzene	10.177	91	39039	2.862	ug/l	100
68) m/p-Xylenes	10.281	106	73302	13.795	ug/l	97
69) o-Xylene	10.622	106	47315	9.503	ug/l	100
70) Styrene	10.640	104	14331	1.677	ug/l #	54
76) 1,2,3-Trichloropropane	11.061	75	86153	22.580	ug/l #	30
78) n-propylbenzene	11.286	91	4497	0.281	ug/l	99
79) 2-Chlorotoluene	11.439	91	2280	0.234	ug/l	71
80) 1,3,5-Trimethylbenzene	11.433	105	7650	0.674	ug/l	98
81) trans-1,4-Dichloro-2-b...	11.061	75	86153	53.636	ug/l #	3

Data Path : Z:\voasrv\HPCHEM1\MSVOA\_X\Data\VX120925\  
 Data File : VX048778.D  
 Acq On : 09 Dec 2025 13:06  
 Operator : JC/MD  
 Sample : Q3803-02  
 Misc : 5.0mL/MSVOA\_X/WATER  
 ALS Vial : 12 Sample Multiplier: 1

Instrument :  
 MSVOA\_X  
 ClientSampleId :  
 CHASE-B

Quant Time: Dec 10 00:20:20 2025  
 Quant Method : Z:\voasrv\HPCHEM1\MSVOA\_X\Method\82X120425W.M  
 Quant Title : SW846 8260  
 QLast Update : Fri Dec 05 03:27:34 2025  
 Response via : Initial Calibration

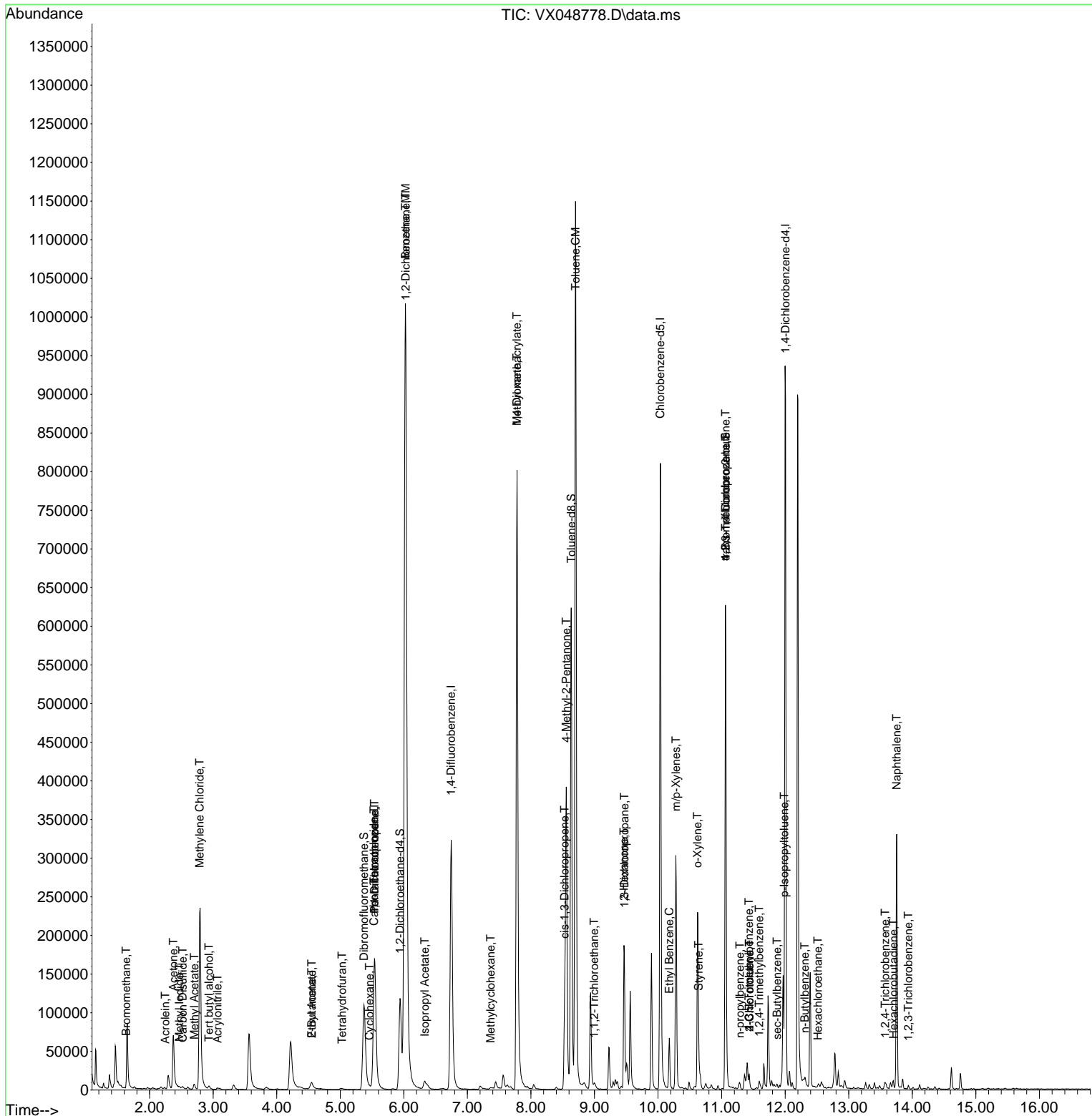
Compound	R.T.	QIon	Response	Conc	Units	Dev(Min)
82) 4-Chlorotoluene	11.439	91	2280	0.200	ug/l	76
84) 1,2,4-Trimethylbenzene	11.591	105	4235	0.370	ug/l	74
85) sec-Butylbenzene	11.872	105	2980	0.209	ug/l	100
86) p-Isopropyltoluene	11.988	119	2594	0.212	ug/l #	65
89) n-Butylbenzene	12.311	91	3610	0.316	ug/l	86
90) Hexachloroethane	12.518	117	520	0.209	ug/l	79
93) 1,2,4-Trichlorobenzene	13.573	180	1363	0.313	ug/l	97
94) Hexachlorobutadiene	13.707	225	634	0.352	ug/l	99
95) Naphthalene	13.756	128	194012	16.976	ug/l	100
96) 1,2,3-Trichlorobenzene	13.938	180	1184	0.295	ug/l	94

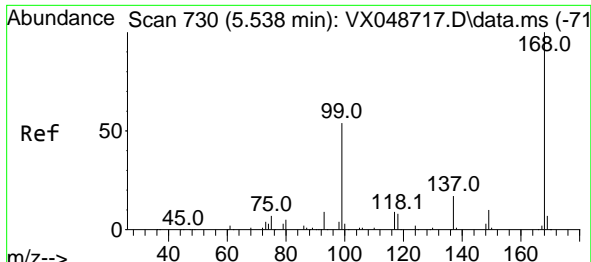
(#) = qualifier out of range (m) = manual integration (+) = signals summed

Data Path : Z:\voasrv\HPCHEM1\MSVOA\_X\Data\VX120925\  
 Data File : VX048778.D  
 Acq On : 09 Dec 2025 13:06  
 Operator : JC/MD  
 Sample : Q3803-02  
 Misc : 5.0mL/MSVOA\_X/WATER  
 ALS Vial : 12 Sample Multiplier: 1

Instrument :  
 MSVOA\_X  
 ClientSampleId :  
 CHASE-B

Quant Time: Dec 10 00:20:20 2025  
 Quant Method : Z:\voasrv\HPCHEM1\MSVOA\_X\Method\82X120425W.M  
 Quant Title : SW846 8260  
 QLast Update : Fri Dec 05 03:27:34 2025  
 Response via : Initial Calibration

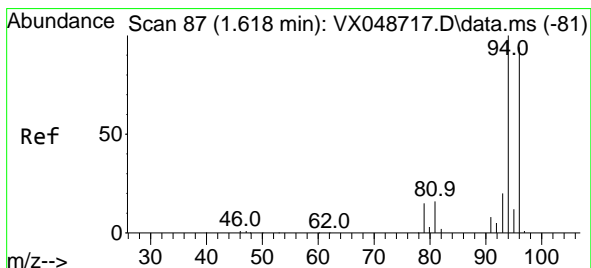
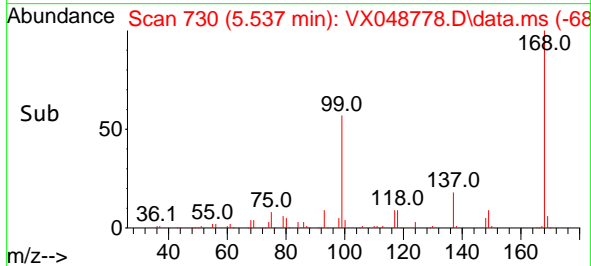
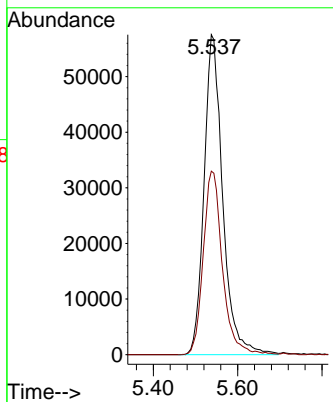
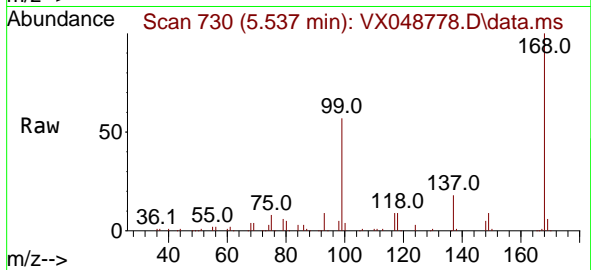




#1  
 Pentafluorobenzene  
 Concen: 50.000 ug/l  
 RT: 5.537 min Scan# 71  
 Delta R.T. -0.001 min  
 Lab File: VX048778.D  
 Acq: 09 Dec 2025 13:06

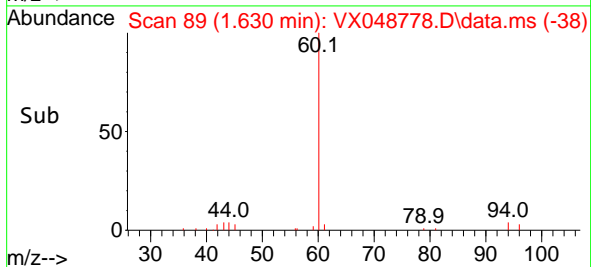
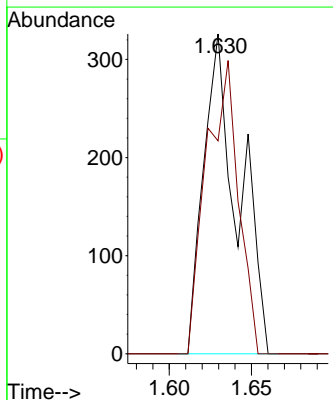
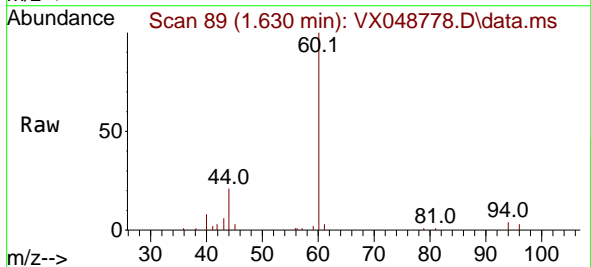
Instrument :  
 MSVOA\_X  
 ClientSampleId :  
 CHASE-B

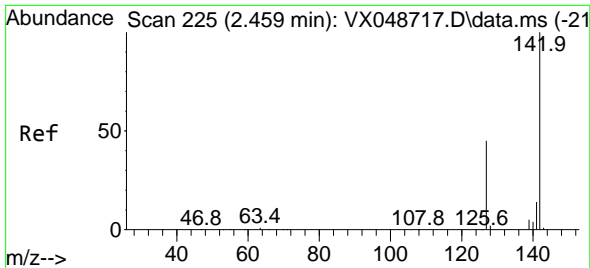
Tgt Ion:168 Resp: 177204  
 Ion Ratio Lower Upper  
 168 100  
 99 57.4 44.2 66.4



#5  
 Bromomethane  
 Concen: 0.317 ug/l  
 RT: 1.630 min Scan# 89  
 Delta R.T. 0.012 min  
 Lab File: VX048778.D  
 Acq: 09 Dec 2025 13:06

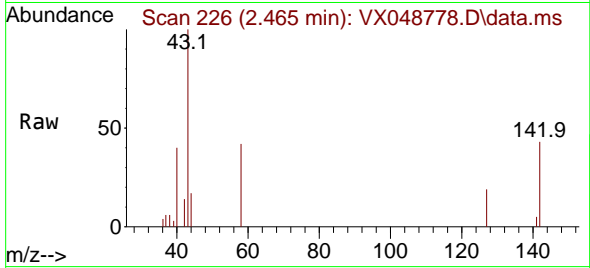
Tgt Ion: 94 Resp: 476  
 Ion Ratio Lower Upper  
 94 100  
 96 66.6 75.2 112.8#





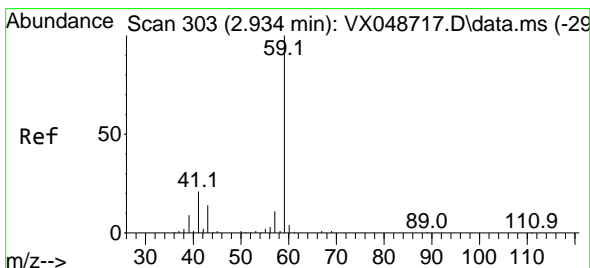
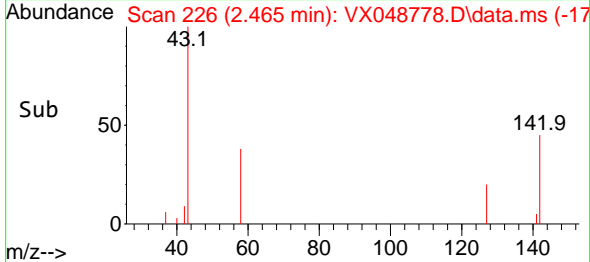
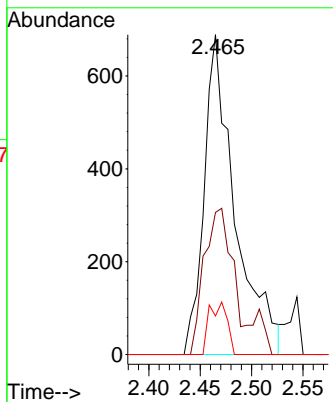
#10  
Methyl Iodide  
Concen: 0.503 ug/l  
RT: 2.465 min Scan# 21  
Delta R.T. 0.006 min  
Lab File: VX048778.D  
Acq: 09 Dec 2025 13:06

Instrument : MSVOA\_X  
Client SampleId : CHASE-B



Tgt Ion: 142 Resp: 1443

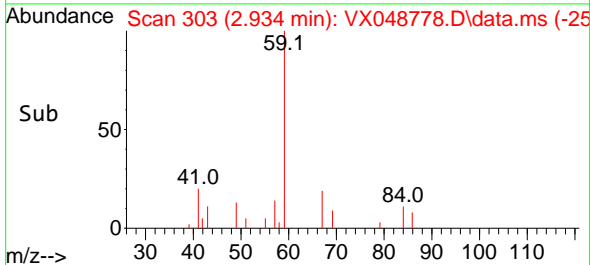
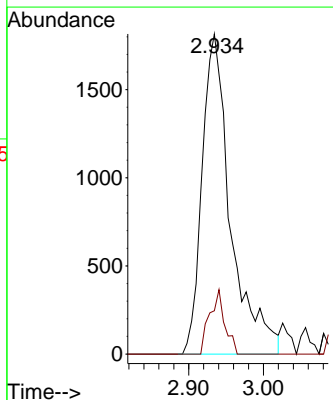
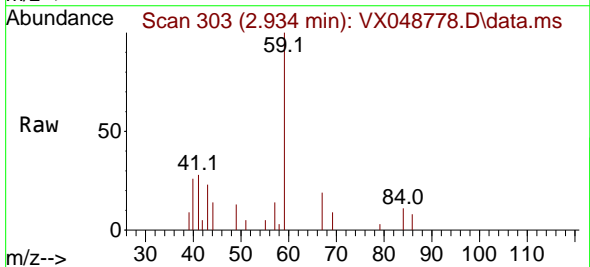
Ion	Ratio	Lower	Upper
142	100		
127	42.8	35.8	53.6
141	9.5	11.1	16.7#

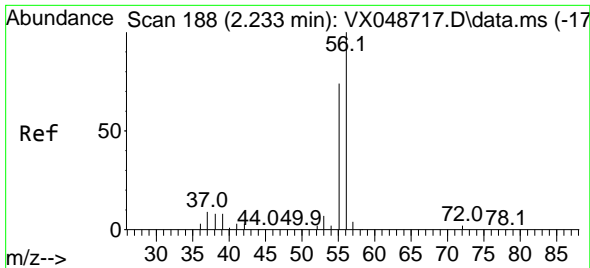


#11  
Tert butyl alcohol  
Concen: 12.531 ug/l  
RT: 2.934 min Scan# 303  
Delta R.T. -0.000 min  
Lab File: VX048778.D  
Acq: 09 Dec 2025 13:06

Tgt Ion: 59 Resp: 4812

Ion	Ratio	Lower	Upper
59	100		
57	10.7	8.1	12.1

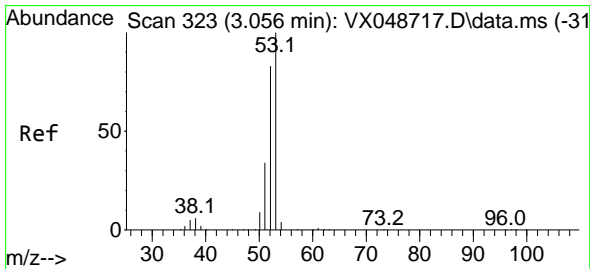
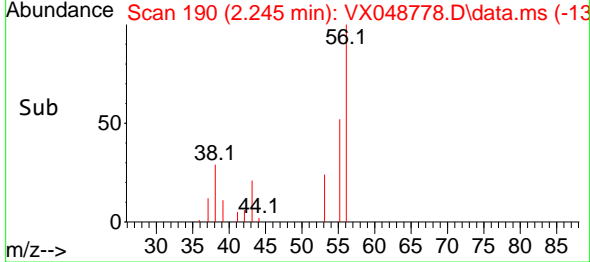
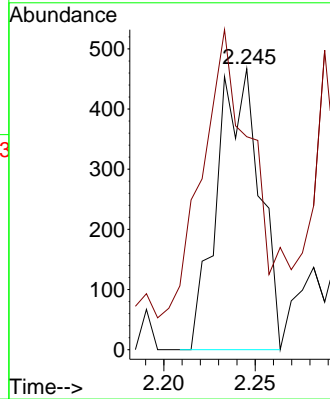
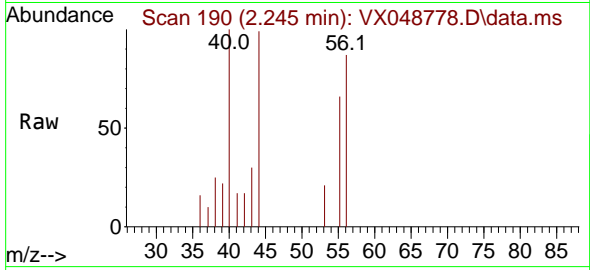




#13  
 Acrolein  
 Concen: 41.889 ug/l  
 RT: 2.245 min Scan# 190  
 Delta R.T. 0.012 min  
 Lab File: VX048778.D  
 Acq: 09 Dec 2025 13:06

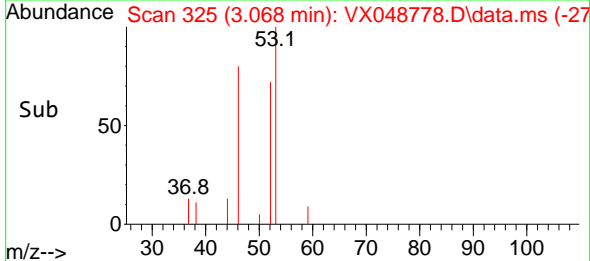
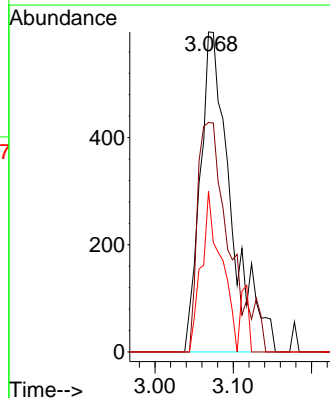
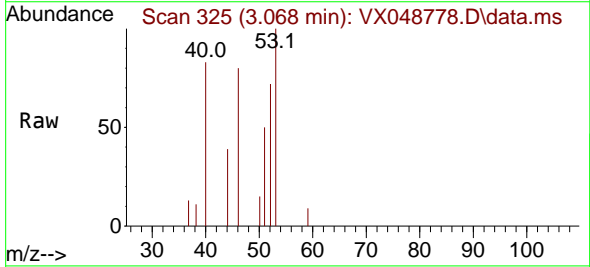
Instrument : MSVOA\_X  
 ClientSampleId : CHASE-B

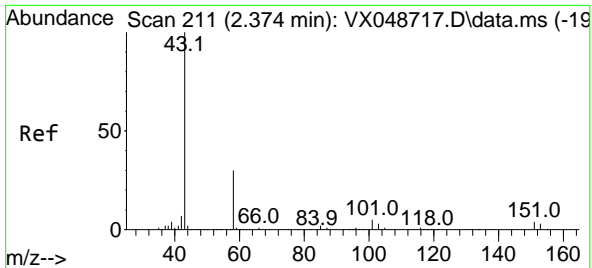
Tgt Ion: 56 Resp: 756  
 Ion Ratio Lower Upper  
 56 100  
 55 152.4 55.8 83.6#



#15  
 Acrylonitrile  
 Concen: 1.366 ug/l  
 RT: 3.068 min Scan# 325  
 Delta R.T. 0.012 min  
 Lab File: VX048778.D  
 Acq: 09 Dec 2025 13:06

Tgt Ion: 53 Resp: 1635  
 Ion Ratio Lower Upper  
 53 100  
 52 73.5 66.3 99.5  
 51 0.0 28.7 43.1#

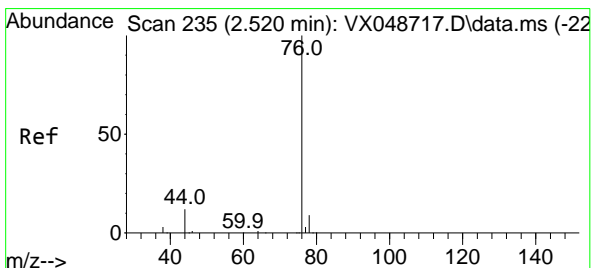
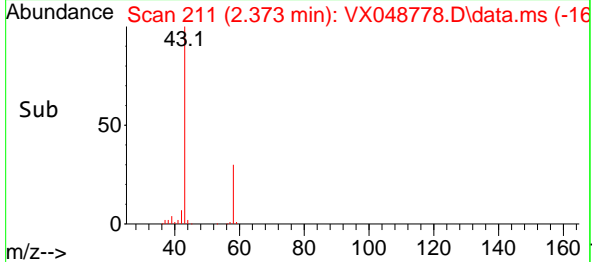
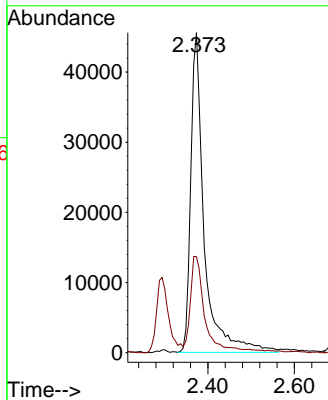
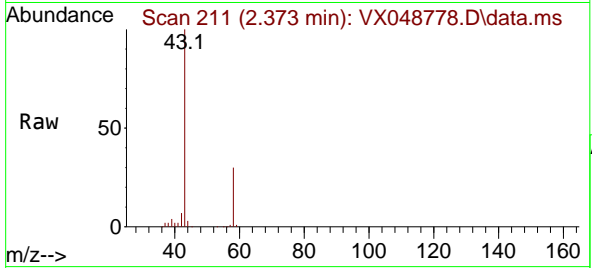




#16  
 Acetone  
 Concen: 107.334 ug/l  
 RT: 2.373 min Scan# 211  
 Delta R.T. -0.000 min  
 Lab File: VX048778.D  
 Acq: 09 Dec 2025 13:06

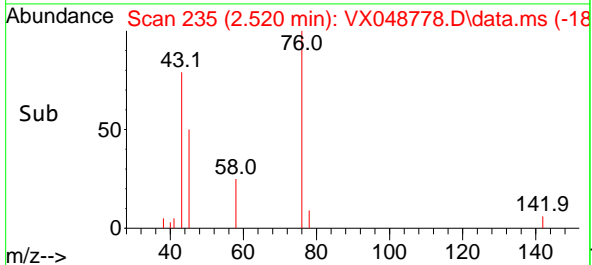
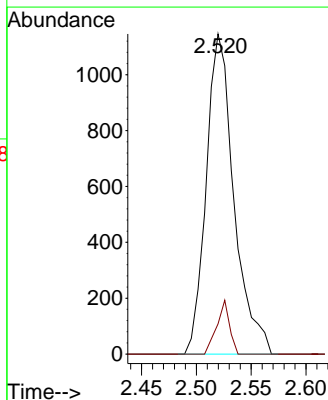
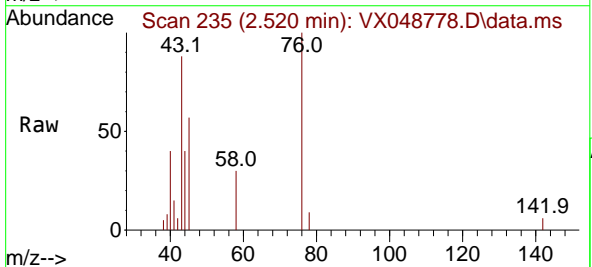
Instrument : MSVOA\_X  
 ClientSampleId : CHASE-B

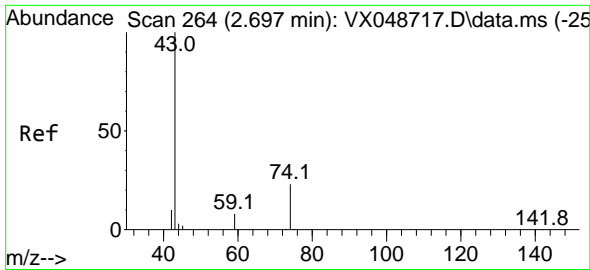
Tgt Ion: 43 Resp: 97728  
 Ion Ratio Lower Upper  
 43 100  
 58 29.5 25.0 37.4



#17  
 Carbon Disulfide  
 Concen: 0.338 ug/l  
 RT: 2.520 min Scan# 235  
 Delta R.T. -0.000 min  
 Lab File: VX048778.D  
 Acq: 09 Dec 2025 13:06

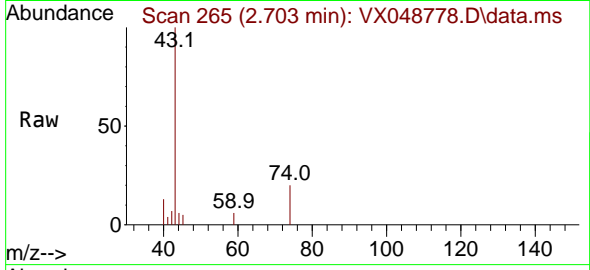
Tgt Ion: 76 Resp: 2017  
 Ion Ratio Lower Upper  
 76 100  
 78 9.4 7.4 11.2



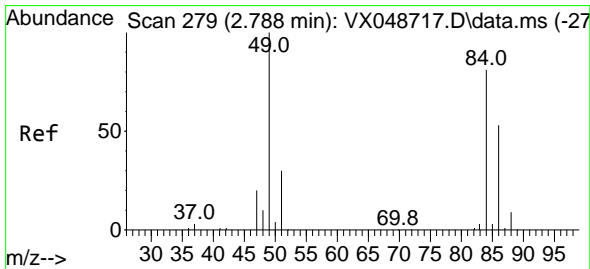
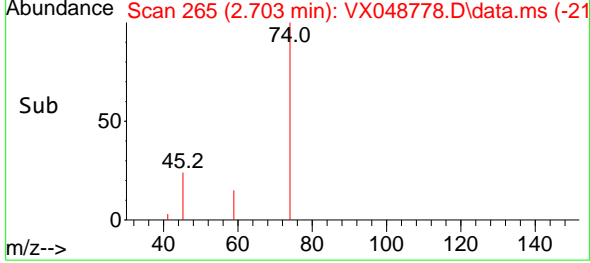
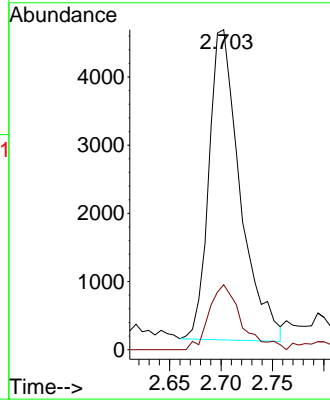


#18  
 Methyl Acetate  
 Concen: 3.759 ug/l  
 RT: 2.703 min Scan# 20  
 Delta R.T. 0.006 min  
 Lab File: VX048778.D  
 Acq: 09 Dec 2025 13:06

Instrument :  
 MSVOA\_X  
 ClientSampleId :  
 CHASE-B

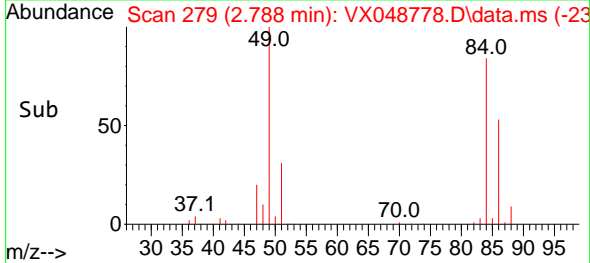
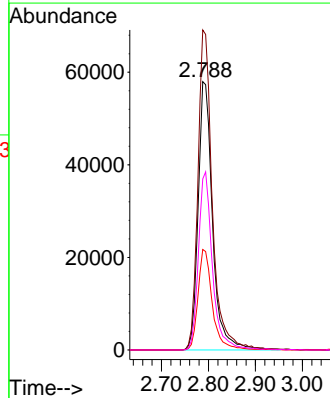
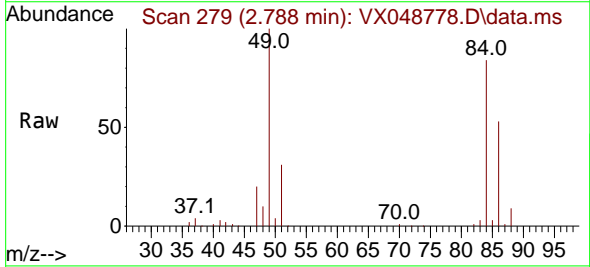


Tgt Ion: 43 Resp: 9631  
 Ion Ratio Lower Upper  
 43 100  
 74 21.6 19.2 28.8

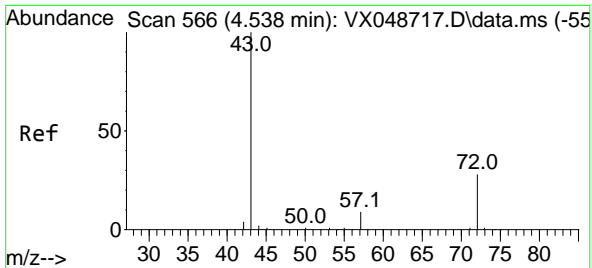


#20  
 Methylene Chloride  
 Concen: 54.557 ug/l  
 RT: 2.788 min Scan# 279  
 Delta R.T. -0.000 min  
 Lab File: VX048778.D  
 Acq: 09 Dec 2025 13:06

Tgt Ion: 84 Resp: 124163  
 Ion Ratio Lower Upper  
 84 100  
 49 119.2 98.7 148.1  
 51 37.4 29.4 44.2  
 86 63.7 52.5 78.7



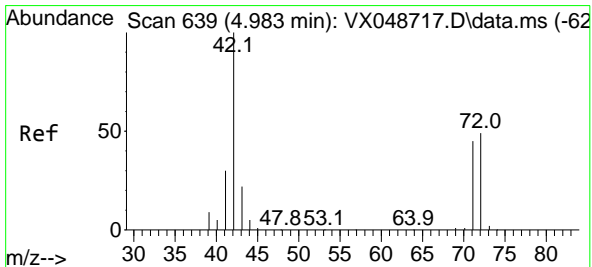
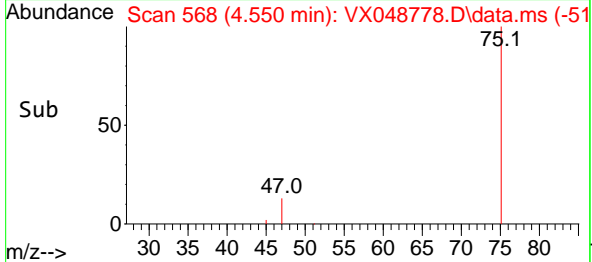
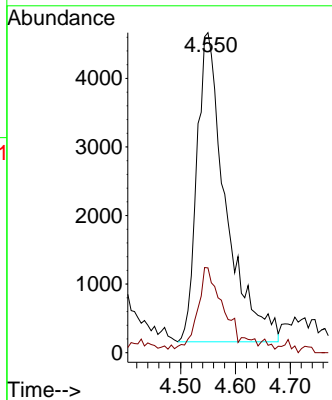
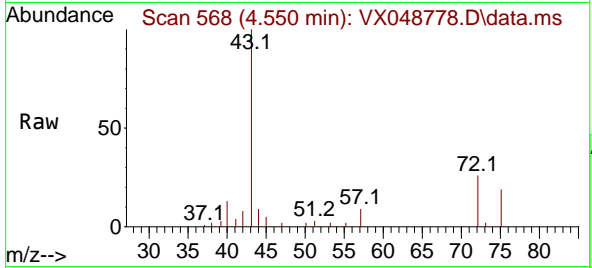




#25  
 2-Butanone  
 Concen: 12.255 ug/l  
 RT: 4.550 min Scan# 50  
 Delta R.T. 0.012 min  
 Lab File: VX048778.D  
 Acq: 09 Dec 2025 13:06

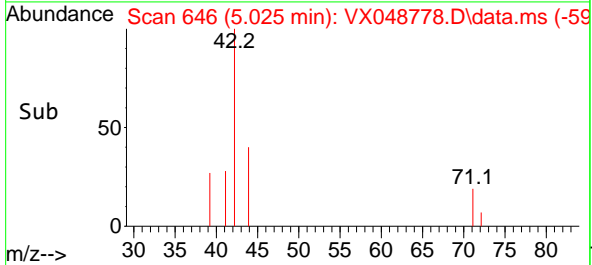
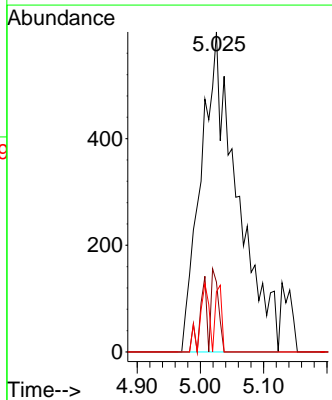
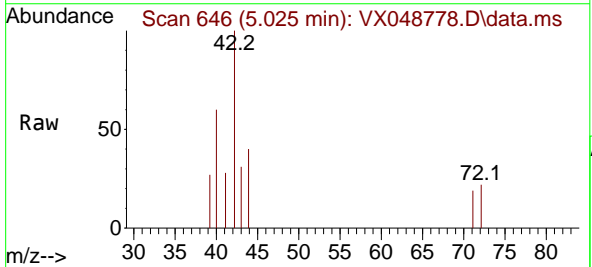
Instrument :  
 MSVOA\_X  
 ClientSampleId :  
 CHASE-B

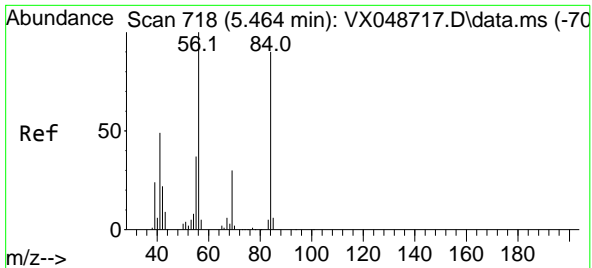
Tgt Ion: 43 Resp: 16468  
 Ion Ratio Lower Upper  
 43 100  
 72 25.4 22.6 34.0



#29  
 Tetrahydrofuran  
 Concen: 2.339 ug/l  
 RT: 5.025 min Scan# 646  
 Delta R.T. 0.043 min  
 Lab File: VX048778.D  
 Acq: 09 Dec 2025 13:06

Tgt Ion: 42 Resp: 2400  
 Ion Ratio Lower Upper  
 42 100  
 72 5.3 39.4 59.2#  
 71 3.6 35.8 53.6#



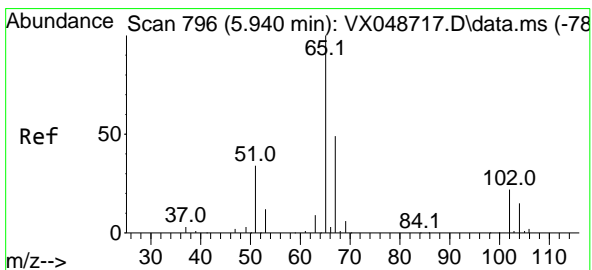
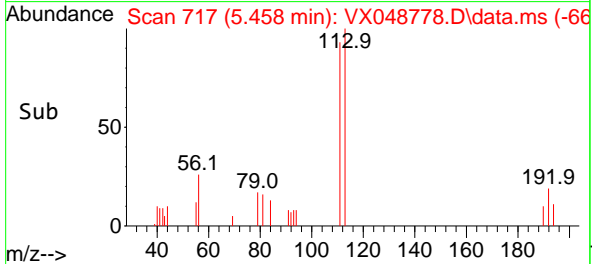
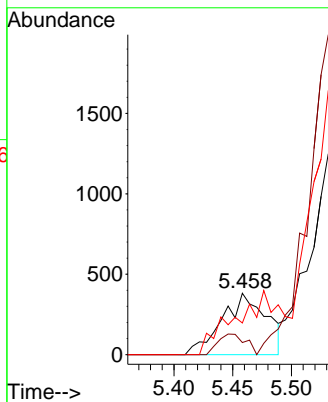
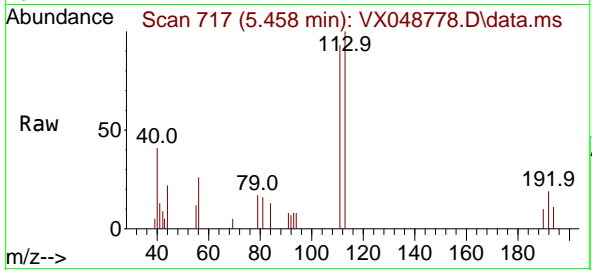


#31  
 Cyclohexane  
 Concen: 0.313 ug/l  
 RT: 5.458 min Scan# 717  
 Delta R.T. -0.006 min  
 Lab File: VX048778.D  
 Acq: 09 Dec 2025 13:06

Instrument :  
 MSVOA\_X  
 ClientSampleId :  
 CHASE-B

Tgt Ion: 56 Resp: 1006

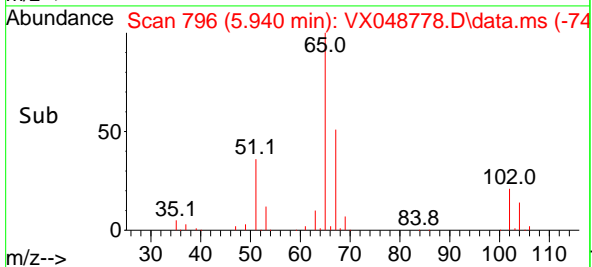
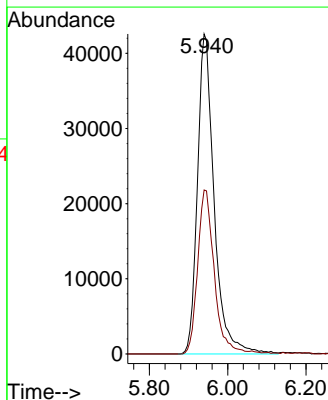
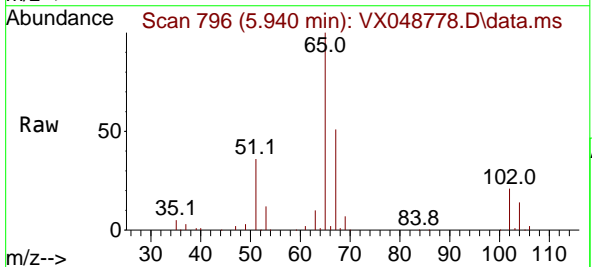
Ion	Ratio	Lower	Upper
56	100		
69	19.6	24.2	36.2#
84	51.6	72.1	108.1#

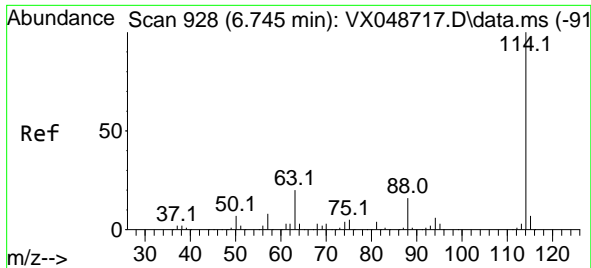


#33  
 1,2-Dichloroethane-d4  
 Concen: 53.047 ug/l  
 RT: 5.940 min Scan# 796  
 Delta R.T. -0.000 min  
 Lab File: VX048778.D  
 Acq: 09 Dec 2025 13:06

Tgt Ion: 65 Resp: 126167

Ion	Ratio	Lower	Upper
65	100		
67	50.8	0.0	107.4



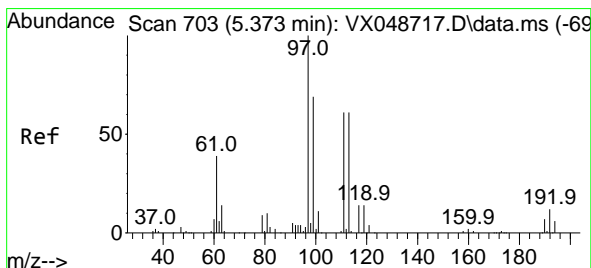
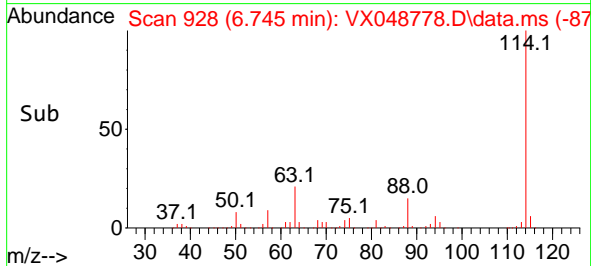
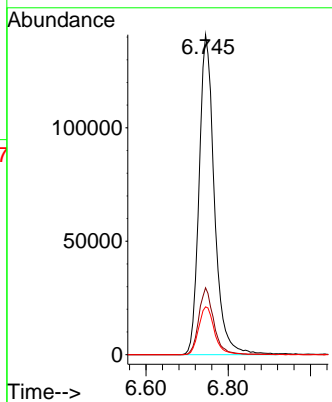
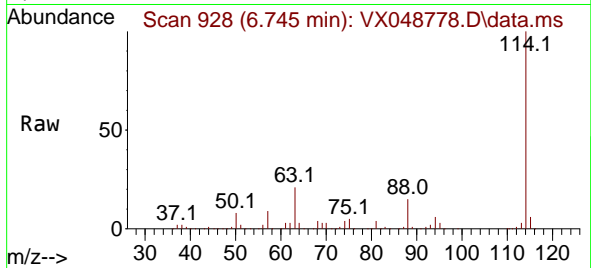


#34  
 1,4-Difluorobenzene  
 Concen: 50.000 ug/l  
 RT: 6.745 min Scan# 91  
 Delta R.T. -0.000 min  
 Lab File: VX048778.D  
 Acq: 09 Dec 2025 13:06

Instrument :  
 MSVOA\_X  
 ClientSampleId :  
 CHASE-B

Tgt Ion:114 Resp: 363764

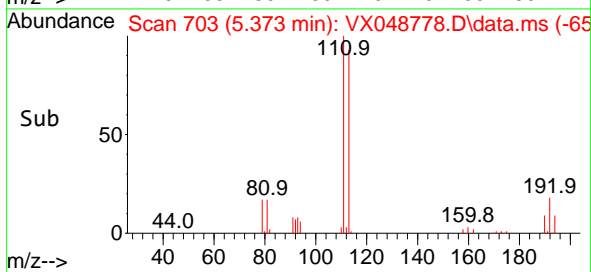
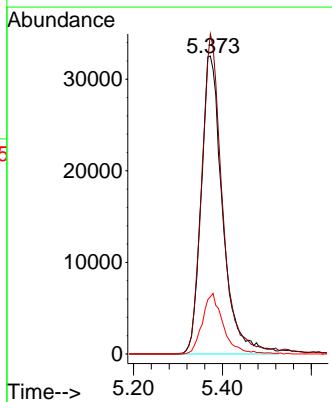
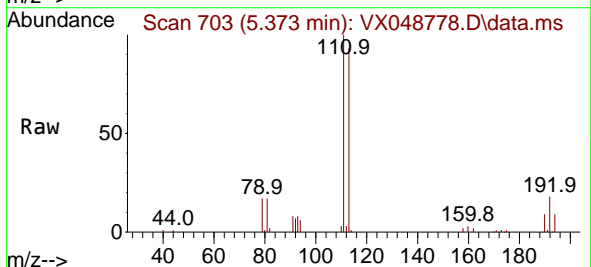
Ion	Ratio	Lower	Upper
114	100		
63	20.9	0.0	39.0
88	15.0	0.0	31.8

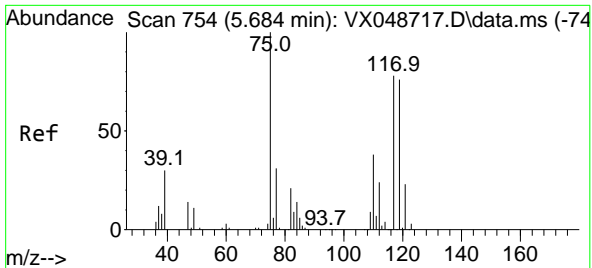


#35  
 Dibromofluoromethane  
 Concen: 43.523 ug/l  
 RT: 5.373 min Scan# 703  
 Delta R.T. -0.000 min  
 Lab File: VX048778.D  
 Acq: 09 Dec 2025 13:06

Tgt Ion:113 Resp: 109009

Ion	Ratio	Lower	Upper
113	100		
111	102.6	79.5	119.3
192	19.9	16.1	24.1

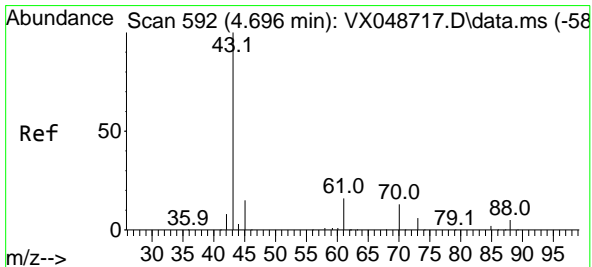
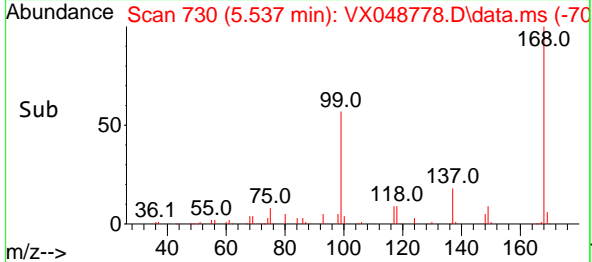
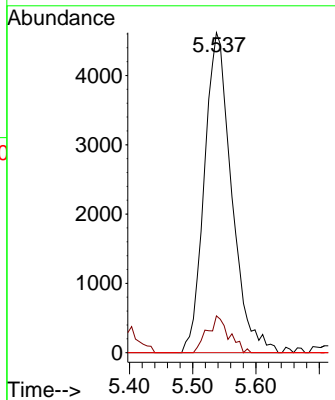
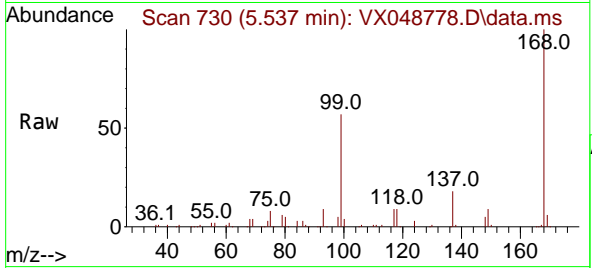




#36  
 1,1-Dichloropropene  
 Concen: 4.032 ug/l  
 RT: 5.537 min Scan# 71  
 Delta R.T. -0.146 min  
 Lab File: VX048778.D  
 Acq: 09 Dec 2025 13:06

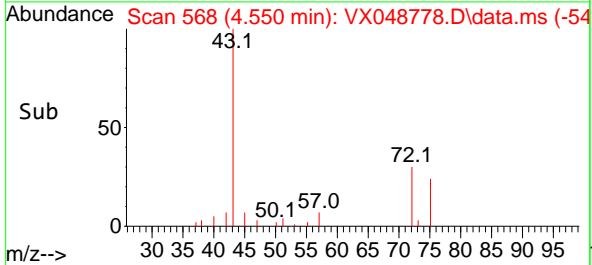
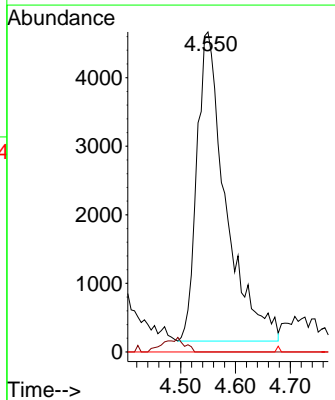
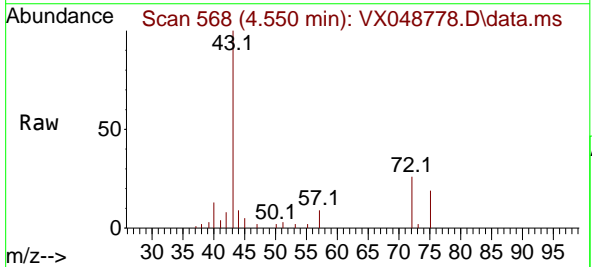
Instrument :  
 MSVOA\_X  
 ClientSampleId :  
 CHASE-B

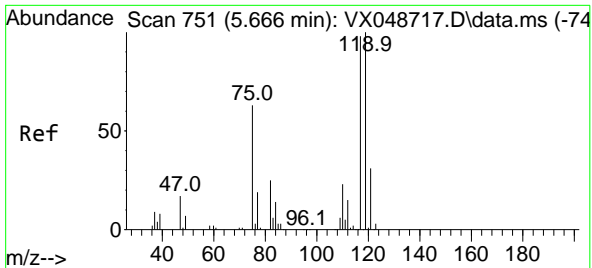
Tgt Ion	Resp	Lower	Upper
75	13833		
110	9.1	18.6	55.8#
77	0.0	25.3	37.9#



#37  
 Ethyl Acetate  
 Concen: 4.017 ug/l  
 RT: 4.550 min Scan# 568  
 Delta R.T. -0.146 min  
 Lab File: VX048778.D  
 Acq: 09 Dec 2025 13:06

Tgt Ion	Resp	Lower	Upper
43	16468		
61	0.0	9.7	14.5#
70	0.0	8.2	12.4#



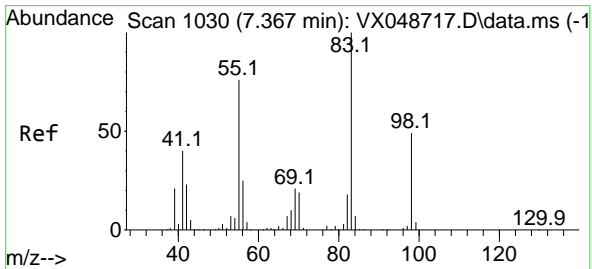
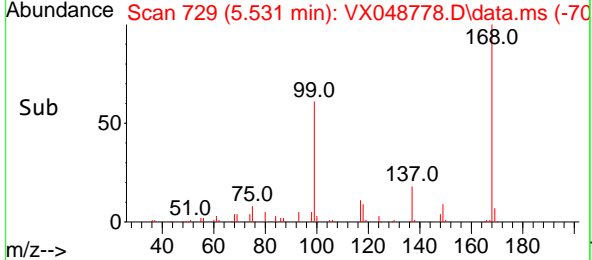
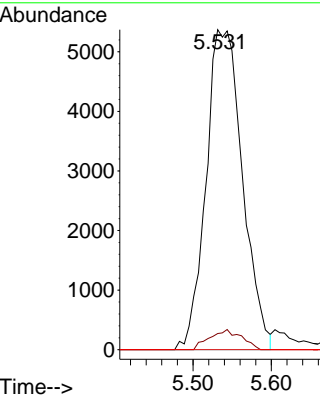
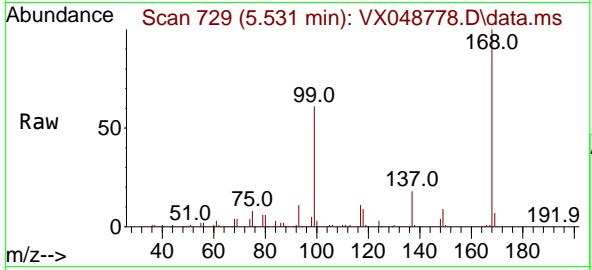


#38  
 Carbon Tetrachloride  
 Concen: 4.471 ug/l  
 RT: 5.531 min Scan# 711  
 Delta R.T. -0.134 min  
 Lab File: VX048778.D  
 Acq: 09 Dec 2025 13:06

Instrument :  
 MSVOA\_X  
 ClientSampleId :  
 CHASE-B

Tgt Ion: 117 Resp: 17373

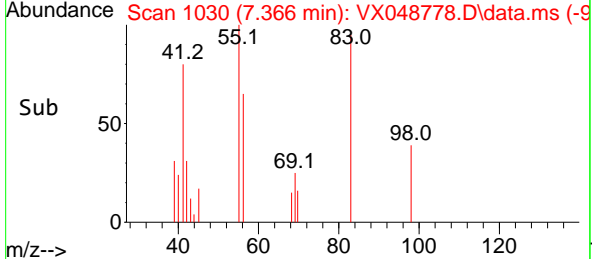
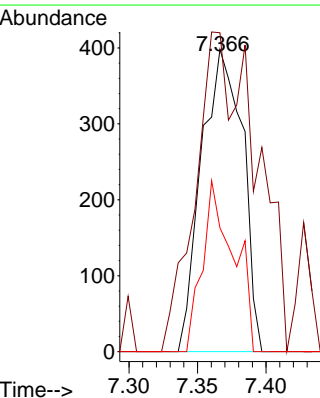
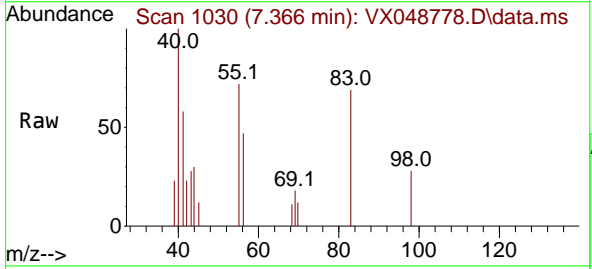
Ion	Ratio	Lower	Upper
117	100		
119	5.1	80.5	120.7#
121	0.0	25.4	38.0#

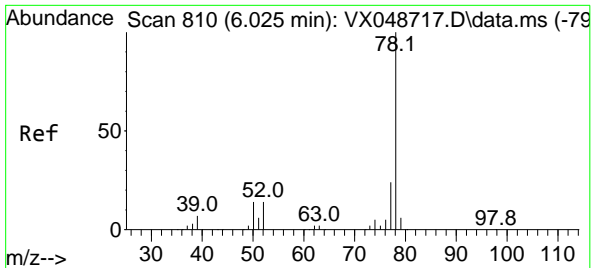


#39  
 Methylcyclohexane  
 Concen: 0.205 ug/l  
 RT: 7.366 min Scan# 1030  
 Delta R.T. -0.000 min  
 Lab File: VX048778.D  
 Acq: 09 Dec 2025 13:06

Tgt Ion: 83 Resp: 831

Ion	Ratio	Lower	Upper
83	100		
55	92.5	60.6	90.8#
98	41.0	39.3	58.9

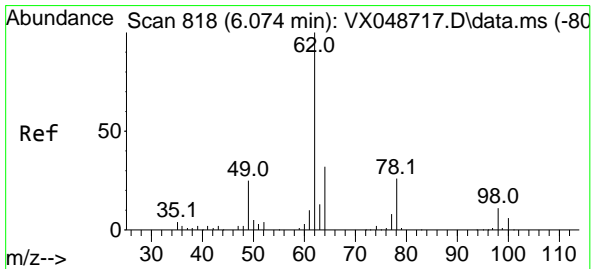
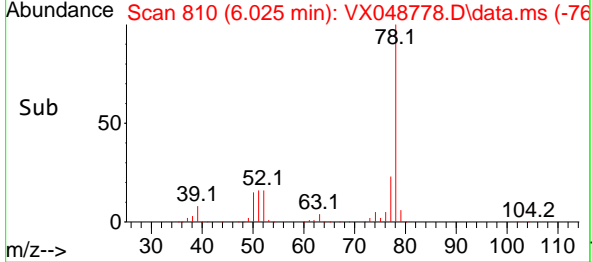
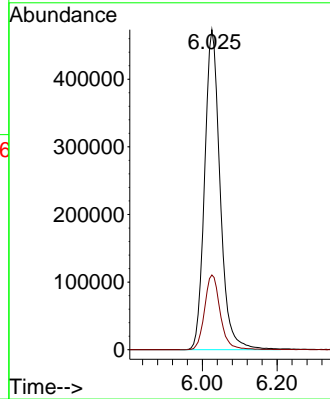
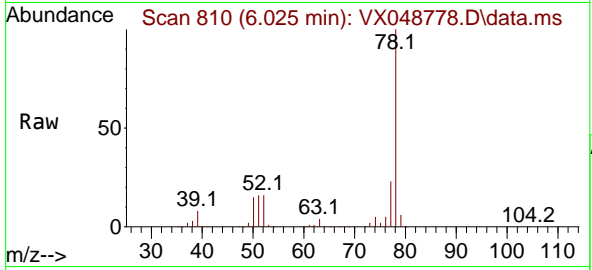




#40  
Benzene  
Concen: 134.014 ug/l  
RT: 6.025 min Scan# 810  
Delta R.T. -0.000 min  
Lab File: VX048778.D  
Acq: 09 Dec 2025 13:06

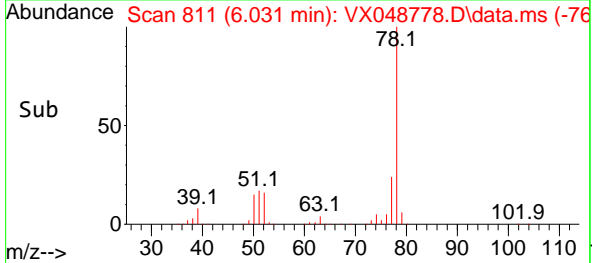
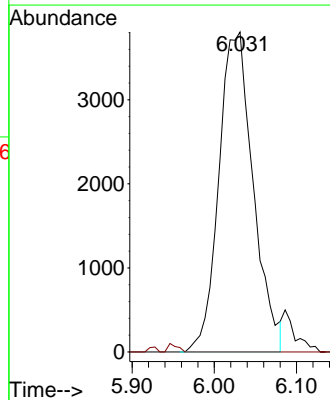
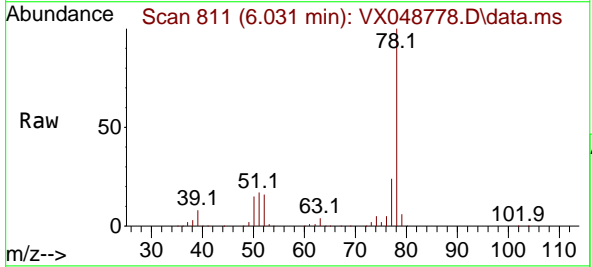
Instrument : MSVOA\_X  
ClientSampleId : CHASE-B

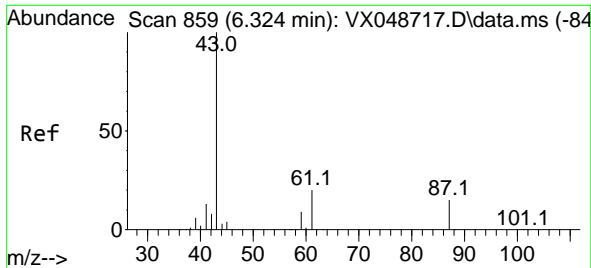
Tgt Ion: 78 Resp: 1362856  
Ion Ratio Lower Upper  
78 100  
77 23.3 18.8 28.2



#42  
1,2-Dichloroethane  
Concen: 3.066 ug/l  
RT: 6.031 min Scan# 811  
Delta R.T. -0.043 min  
Lab File: VX048778.D  
Acq: 09 Dec 2025 13:06

Tgt Ion: 62 Resp: 11034  
Ion Ratio Lower Upper  
62 100  
98 0.0 0.0 20.2



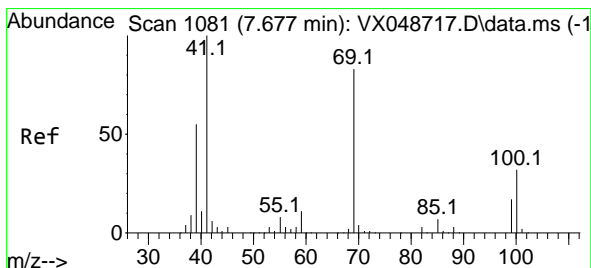
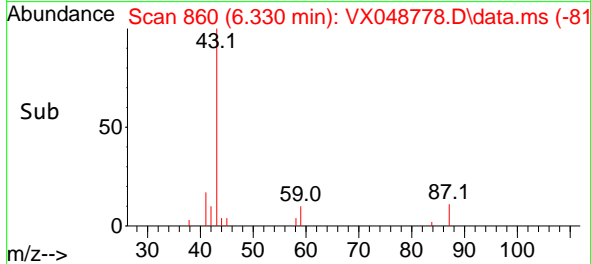
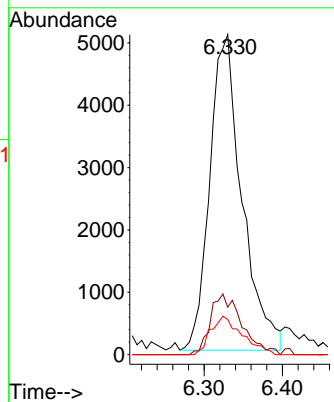
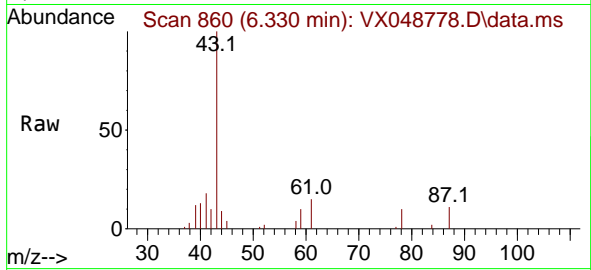


#43  
 Isopropyl Acetate  
 Concen: 2.322 ug/l  
 RT: 6.330 min Scan# 80  
 Delta R.T. 0.006 min  
 Lab File: VX048778.D  
 Acq: 09 Dec 2025 13:06

Instrument :  
 MSVOA\_X  
 ClientSampleId :  
 CHASE-B

Tgt Ion: 43 Resp: 14411

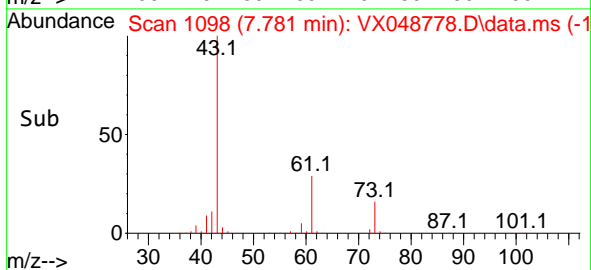
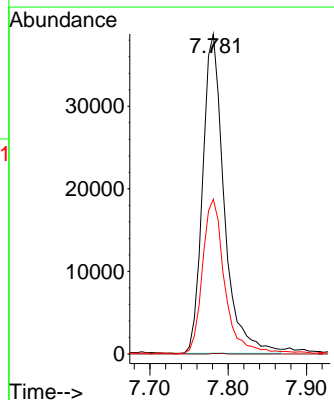
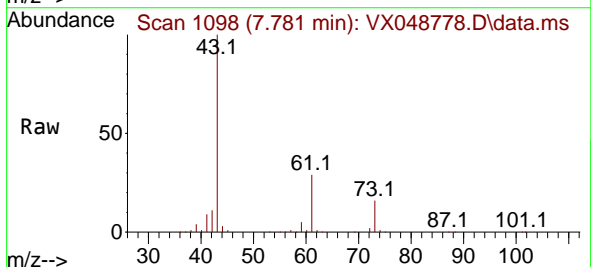
Ion	Ratio	Lower	Upper
43	100		
61	18.9	16.8	25.2
87	12.0	11.8	17.6

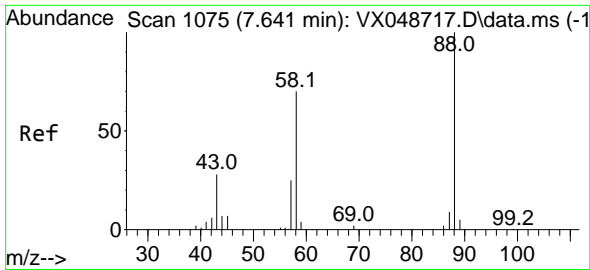


#48  
 Methyl methacrylate  
 Concen: 23.571 ug/l  
 RT: 7.781 min Scan# 1098  
 Delta R.T. 0.104 min  
 Lab File: VX048778.D  
 Acq: 09 Dec 2025 13:06

Tgt Ion: 41 Resp: 73596

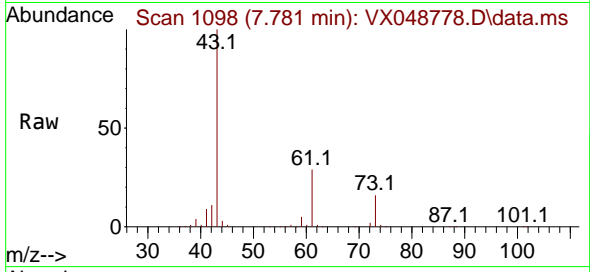
Ion	Ratio	Lower	Upper
41	100		
69	0.1	68.5	102.7#
39	51.0	43.5	65.3



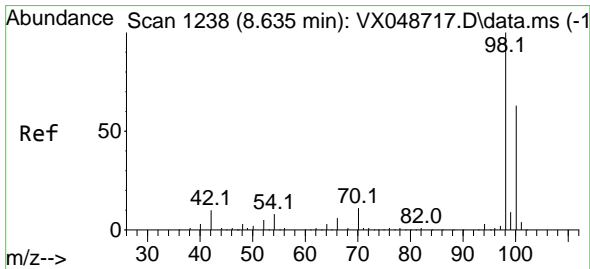
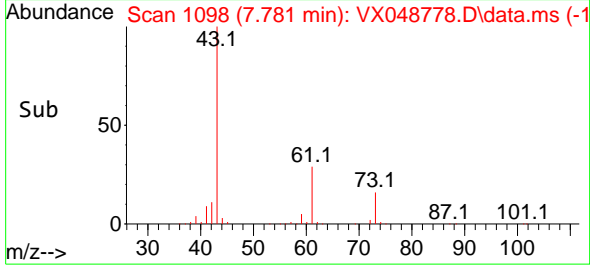
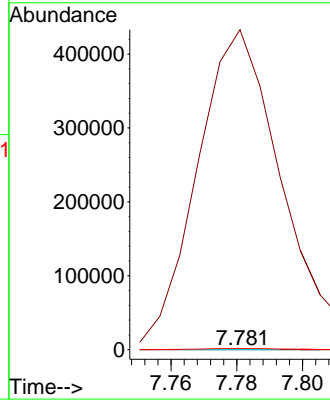


#49  
 1,4-Dioxane  
 Concen: 1.327 ug/l  
 RT: 7.781 min Scan# 1098  
 Delta R.T. 0.140 min  
 Lab File: VX048778.D  
 Acq: 09 Dec 2025 13:06

Instrument :  
 MSVOA\_X  
 ClientSampleId :  
 CHASE-B

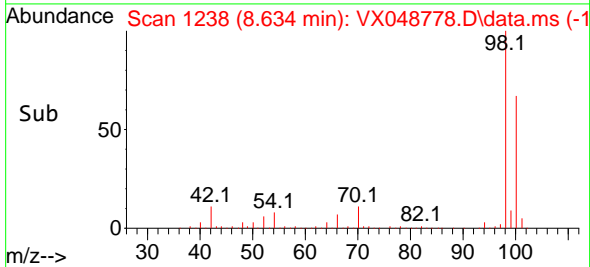
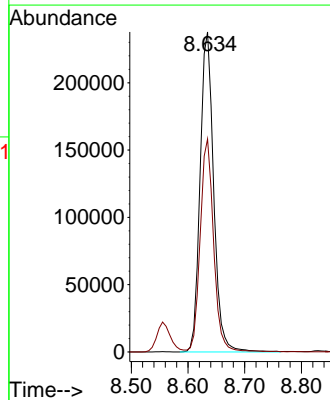
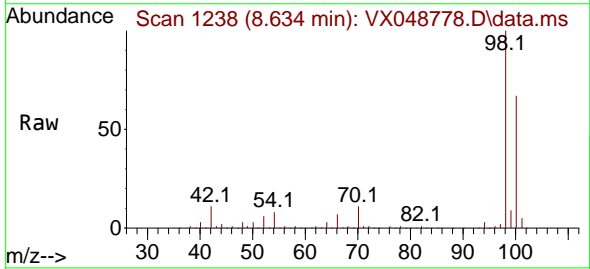


Tgt Ion: 88 Resp: 57  
 Ion Ratio Lower Upper  
 88 100  
 43 1446663.2 28.6 43.0#  
 58 5856.1 58.0 87.0#

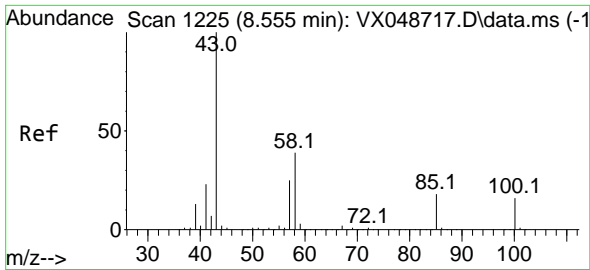


#50  
 Toluene-d8  
 Concen: 45.019 ug/l  
 RT: 8.634 min Scan# 1238  
 Delta R.T. -0.000 min  
 Lab File: VX048778.D  
 Acq: 09 Dec 2025 13:06

Tgt Ion: 98 Resp: 395249  
 Ion Ratio Lower Upper  
 98 100  
 100 65.7 53.4 80.0



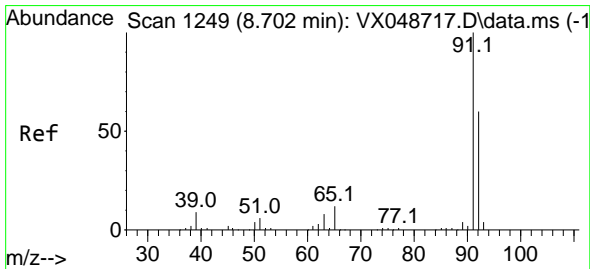
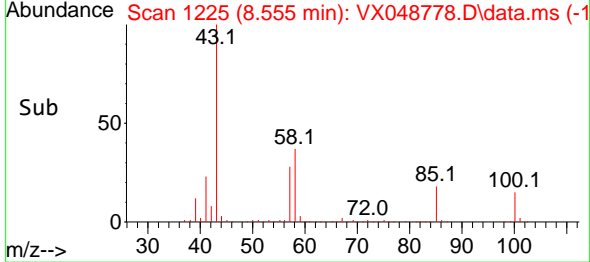
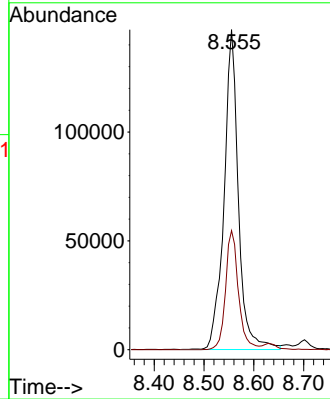
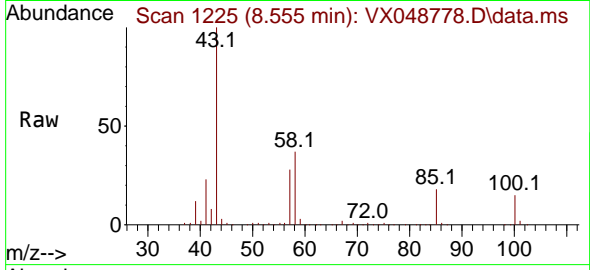




#51  
 4-Methyl-2-Pentanone  
 Concen: 76.332 ug/l  
 RT: 8.555 min Scan# 1225  
 Delta R.T. -0.000 min  
 Lab File: VX048778.D  
 Acq: 09 Dec 2025 13:06

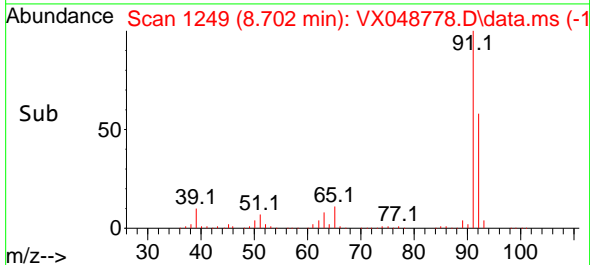
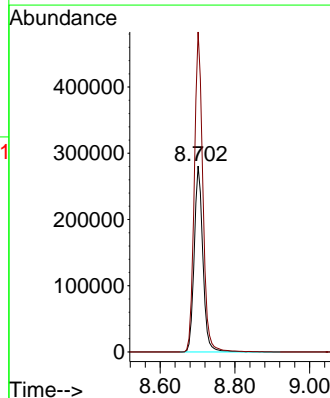
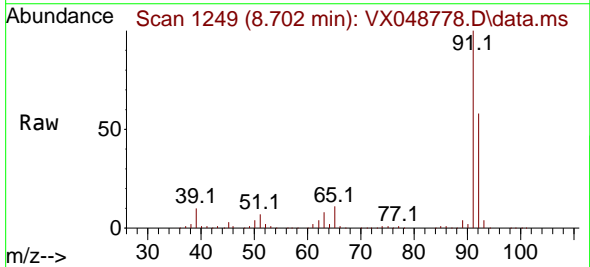
Instrument :  
 MSVOA\_X  
 ClientSampleId :  
 CHASE-B

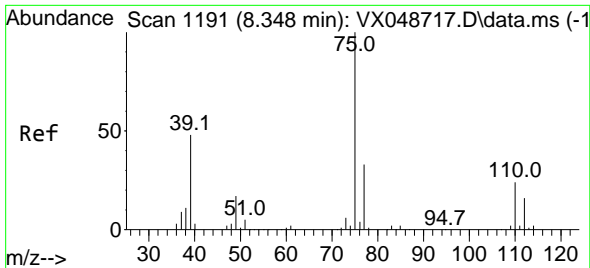
Tgt Ion: 43 Resp: 294081  
 Ion Ratio Lower Upper  
 43 100  
 58 33.4 32.2 48.4



#52  
 Toluene  
 Concen: 73.382 ug/l  
 RT: 8.702 min Scan# 1249  
 Delta R.T. -0.000 min  
 Lab File: VX048778.D  
 Acq: 09 Dec 2025 13:06

Tgt Ion: 92 Resp: 450003  
 Ion Ratio Lower Upper  
 92 100  
 91 170.3 136.3 204.5

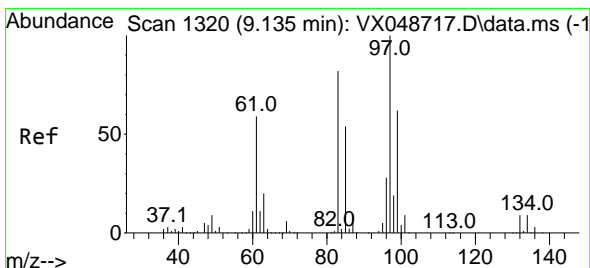
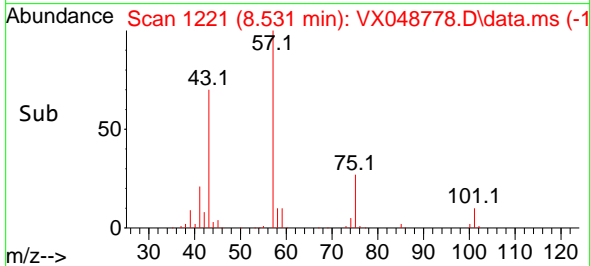
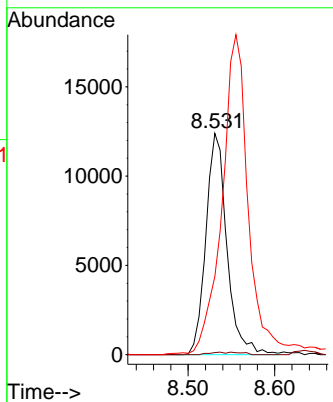
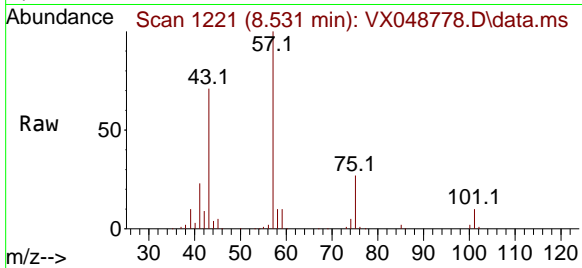




#54  
 cis-1,3-Dichloropropene  
 Concen: 5.078 ug/l  
 RT: 8.531 min Scan# 1191  
 Delta R.T. 0.183 min  
 Lab File: VX048778.D  
 Acq: 09 Dec 2025 13:06

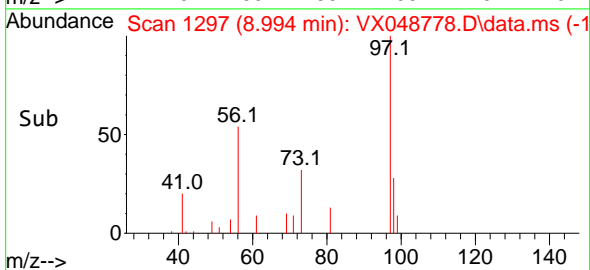
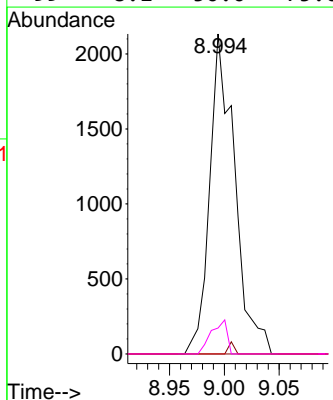
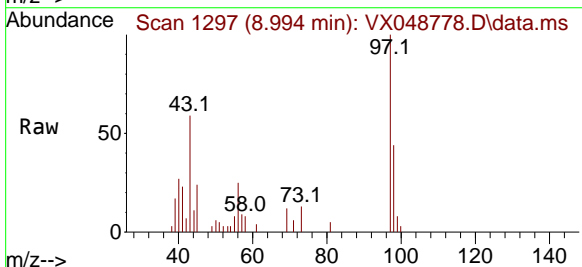
Instrument : MSVOA\_X  
 ClientSampleId : CHASE-B

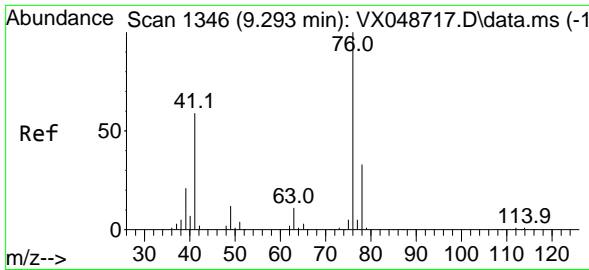
Tgt Ion	Resp	Lower	Upper
75	20866		
75	100		
77	1.0	26.1	39.1#
39	34.6	38.2	57.4#



#55  
 1,1,2-Trichloroethane  
 Concen: 1.373 ug/l  
 RT: 8.994 min Scan# 1297  
 Delta R.T. -0.140 min  
 Lab File: VX048778.D  
 Acq: 09 Dec 2025 13:06

Tgt Ion	Resp	Lower	Upper
97	3387		
97	100		
83	0.0	66.0	99.0#
85	0.0	43.2	64.8#
99	8.1	50.0	75.0#

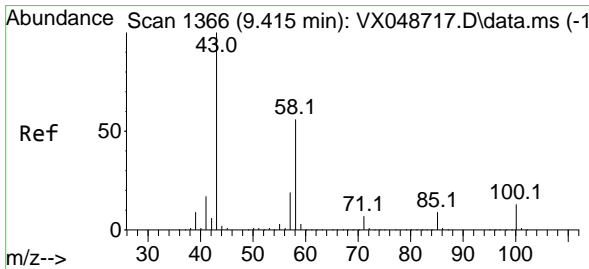
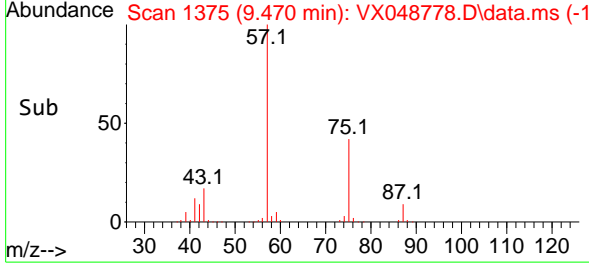
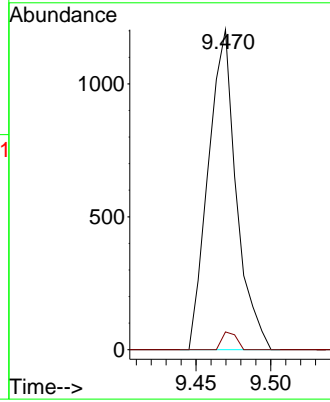
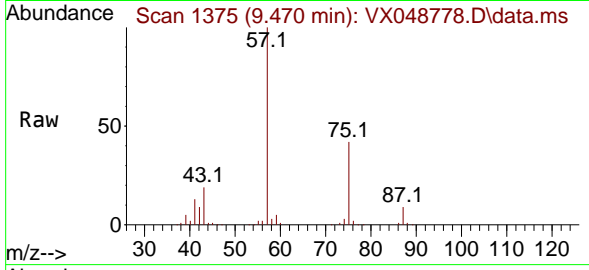




#57  
 1,3-Dichloropropane  
 Concen: 0.383 ug/l  
 RT: 9.470 min Scan# 1375  
 Delta R.T. 0.177 min  
 Lab File: VX048778.D  
 Acq: 09 Dec 2025 13:06

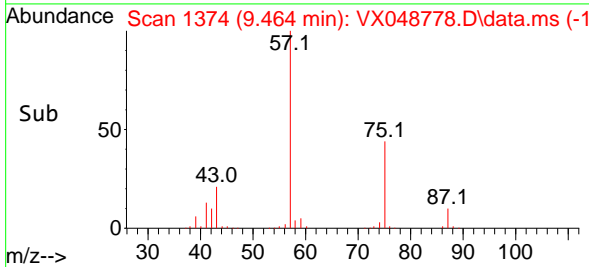
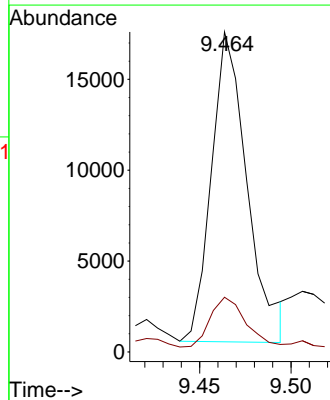
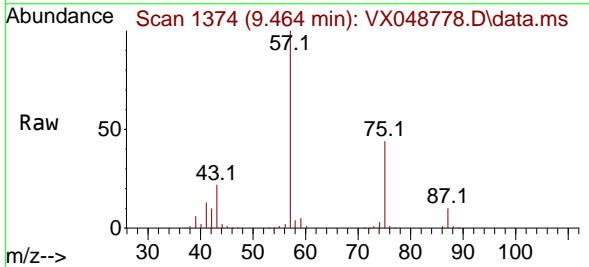
Instrument :  
 MSVOA\_X  
 ClientSampleId :  
 CHASE-B

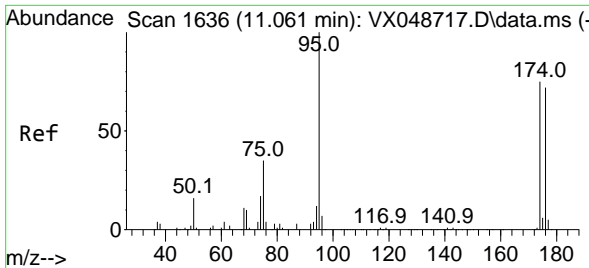
Tgt Ion: 76 Resp: 1571  
 Ion Ratio Lower Upper  
 76 100  
 78 2.9 26.0 39.0#



#59  
 2-Hexanone  
 Concen: 8.578 ug/l  
 RT: 9.464 min Scan# 1374  
 Delta R.T. 0.049 min  
 Lab File: VX048778.D  
 Acq: 09 Dec 2025 13:06

Tgt Ion: 43 Resp: 23199  
 Ion Ratio Lower Upper  
 43 100  
 58 16.4 27.8 83.4#



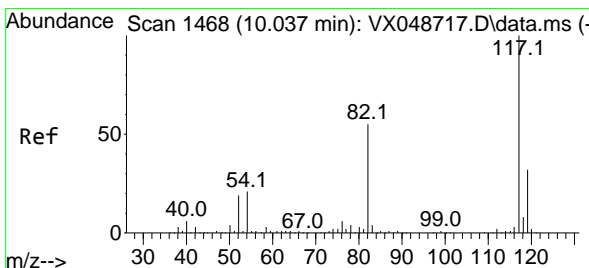
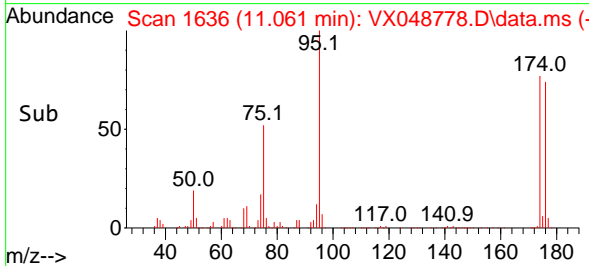
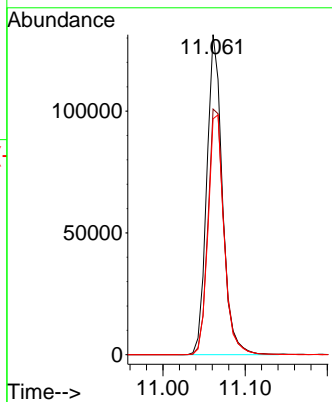
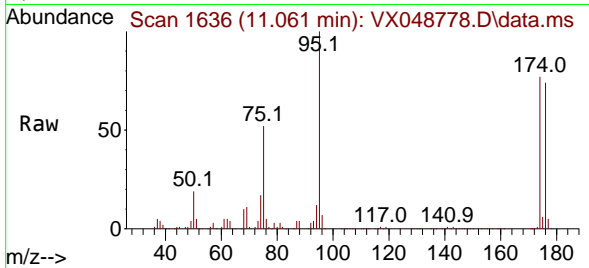


#62  
 4-Bromofluorobenzene  
 Concen: 57.103 ug/l  
 RT: 11.061 min Scan# 11  
 Delta R.T. -0.000 min  
 Lab File: VX048778.D  
 Acq: 09 Dec 2025 13:06

Instrument :  
 MSVOA\_X  
 ClientSampleId :  
 CHASE-B

Tgt Ion: 95 Resp: 172878

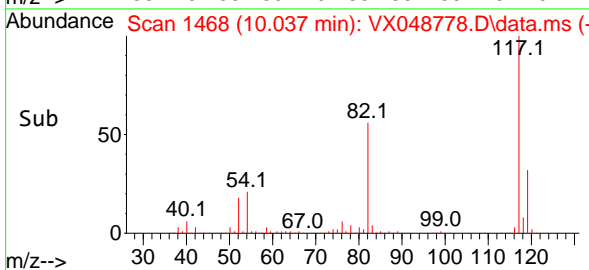
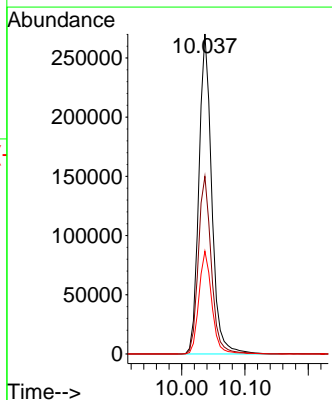
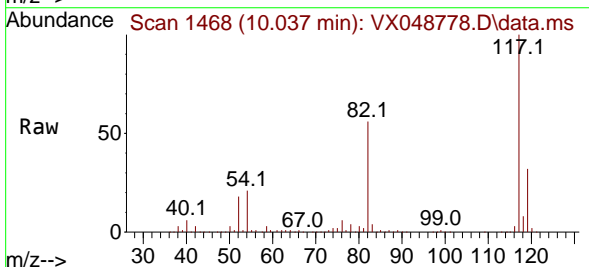
Ion	Ratio	Lower	Upper
95	100		
174	79.4	0.0	157.8
176	76.9	0.0	154.0

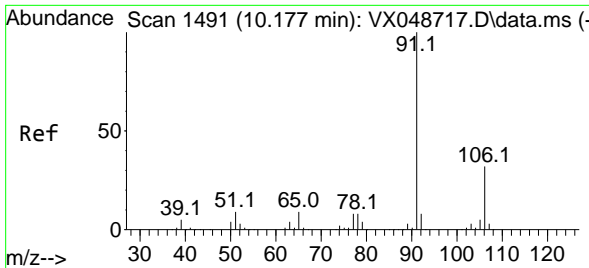


#63  
 Chlorobenzene-d5  
 Concen: 50.000 ug/l  
 RT: 10.037 min Scan# 1468  
 Delta R.T. -0.000 min  
 Lab File: VX048778.D  
 Acq: 09 Dec 2025 13:06

Tgt Ion: 117 Resp: 381897

Ion	Ratio	Lower	Upper
117	100		
82	55.5	44.1	66.1
119	32.1	25.2	37.8

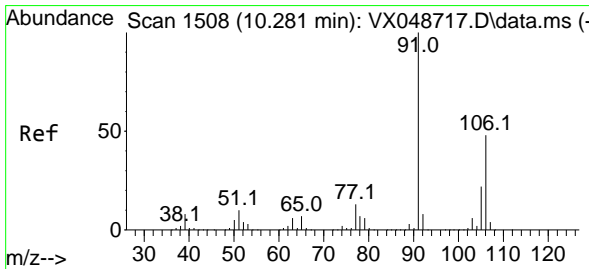
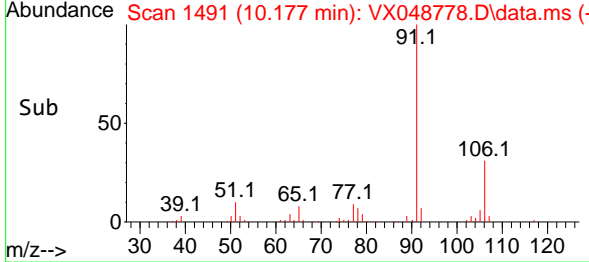
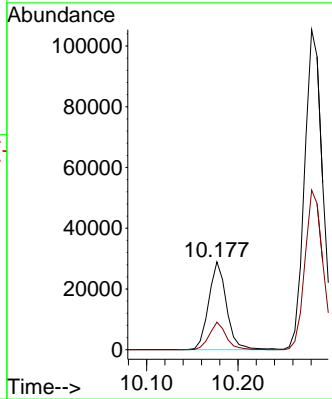
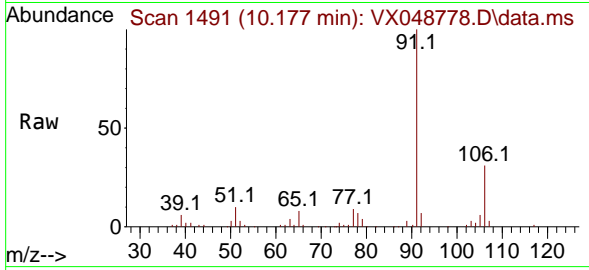




#67  
 Ethyl Benzene  
 Concen: 2.862 ug/l  
 RT: 10.177 min Scan# 1491  
 Delta R.T. -0.000 min  
 Lab File: VX048778.D  
 Acq: 09 Dec 2025 13:06

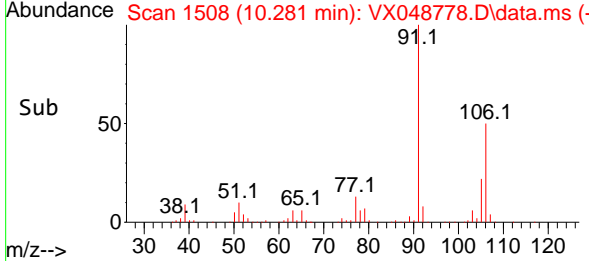
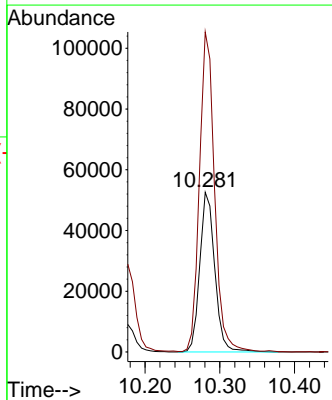
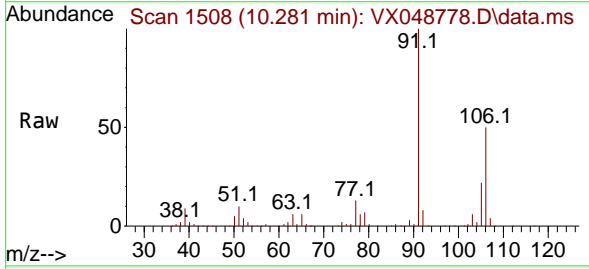
Instrument : MSVOA\_X  
 ClientSampleId : CHASE-B

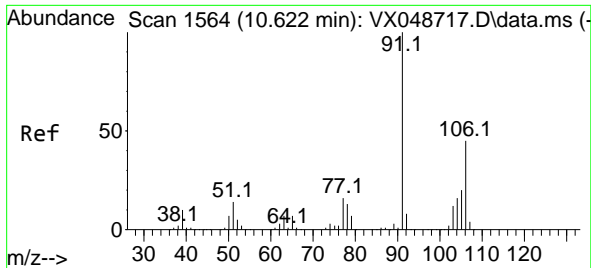
Tgt Ion: 91 Resp: 39039  
 Ion Ratio Lower Upper  
 91 100  
 106 31.4 25.3 37.9



#68  
 m/p-Xylenes  
 Concen: 13.795 ug/l  
 RT: 10.281 min Scan# 1508  
 Delta R.T. -0.000 min  
 Lab File: VX048778.D  
 Acq: 09 Dec 2025 13:06

Tgt Ion: 106 Resp: 73302  
 Ion Ratio Lower Upper  
 106 100  
 91 200.6 164.2 246.4

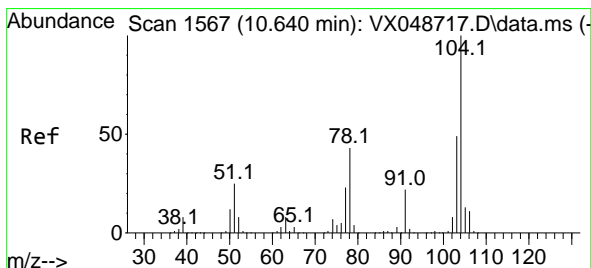
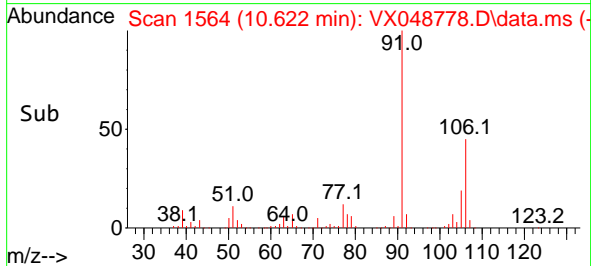
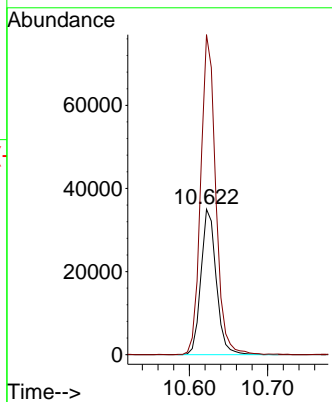
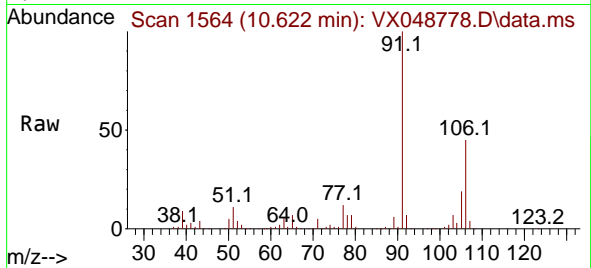




#69  
 o-Xylene  
 Concen: 9.503 ug/l  
 RT: 10.622 min Scan# 1564  
 Delta R.T. -0.000 min  
 Lab File: VX048778.D  
 Acq: 09 Dec 2025 13:06

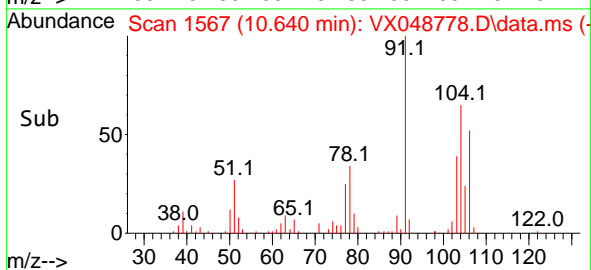
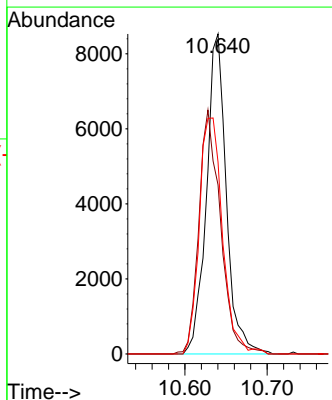
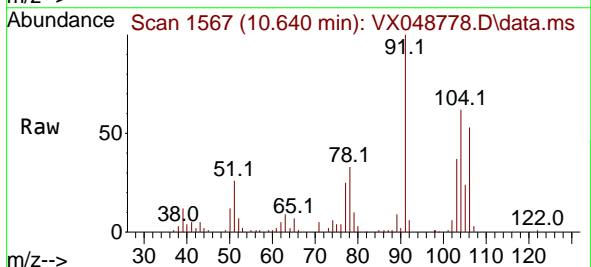
Instrument : MSVOA\_X  
 ClientSampleId : CHASE-B

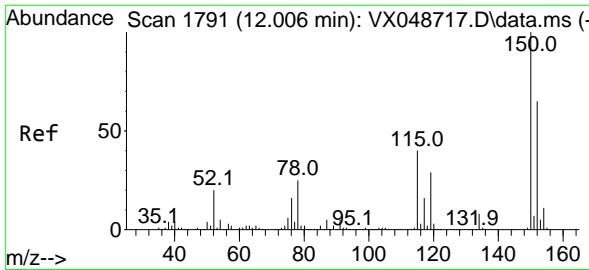
Tgt Ion:106 Resp: 47315  
 Ion Ratio Lower Upper  
 106 100  
 91 216.7 108.1 324.3



#70  
 Styrene  
 Concen: 1.677 ug/l  
 RT: 10.640 min Scan# 1567  
 Delta R.T. -0.000 min  
 Lab File: VX048778.D  
 Acq: 09 Dec 2025 13:06

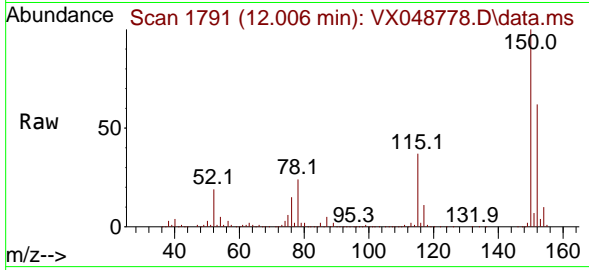
Tgt Ion:104 Resp: 14331  
 Ion Ratio Lower Upper  
 104 100  
 78 82.9 40.6 60.8#  
 103 86.5 43.4 65.2#



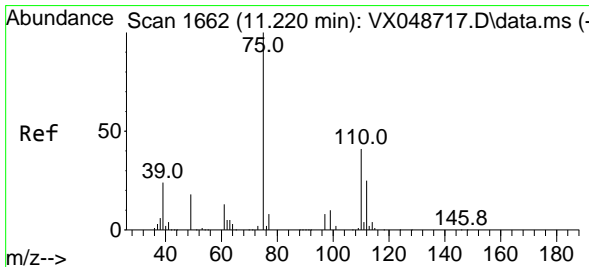
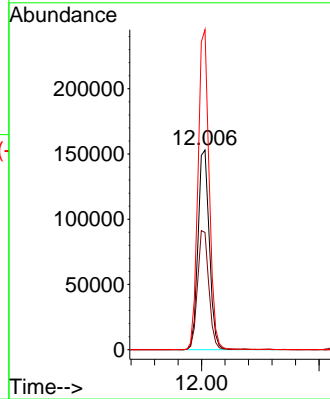
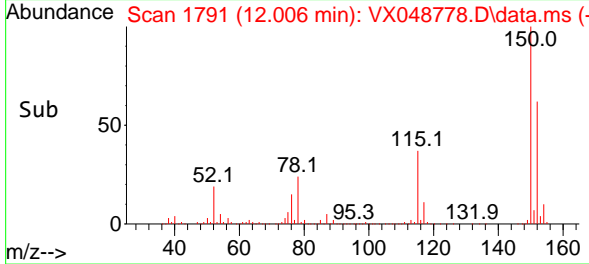


#72  
 1,4-Dichlorobenzene-d4  
 Concen: 50.000 ug/l  
 RT: 12.006 min Scan# 11  
 Delta R.T. -0.000 min  
 Lab File: VX048778.D  
 Acq: 09 Dec 2025 13:06

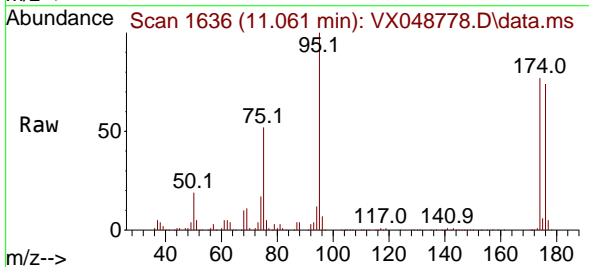
Instrument :  
 MSVOA\_X  
 ClientSampleId :  
 CHASE-B



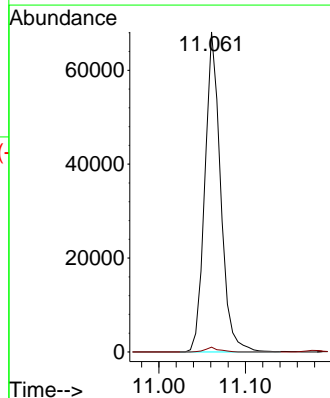
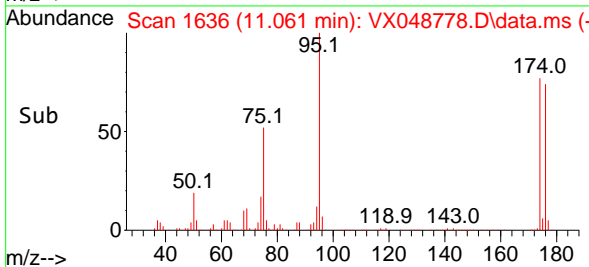
Tgt Ion:152 Resp: 204856  
 Ion Ratio Lower Upper  
 152 100  
 115 59.3 42.1 126.4  
 150 157.2 0.0 347.8

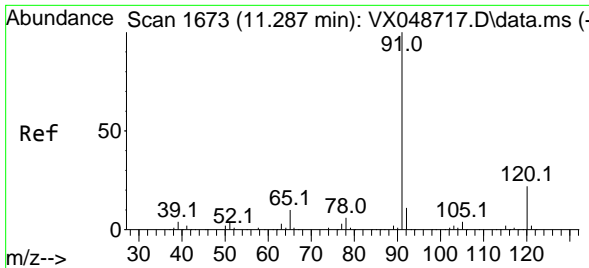


#76  
 1,2,3-Trichloropropane  
 Concen: 22.580 ug/l  
 RT: 11.061 min Scan# 1636  
 Delta R.T. -0.159 min  
 Lab File: VX048778.D  
 Acq: 09 Dec 2025 13:06



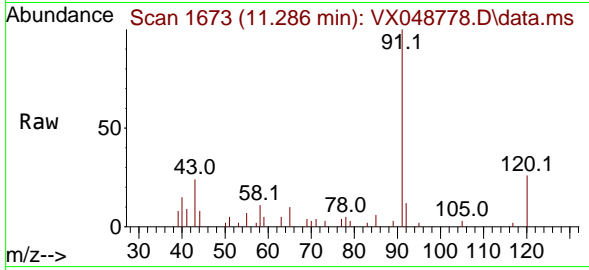
Tgt Ion: 75 Resp: 86153  
 Ion Ratio Lower Upper  
 75 100  
 77 1.3 24.3 73.0#



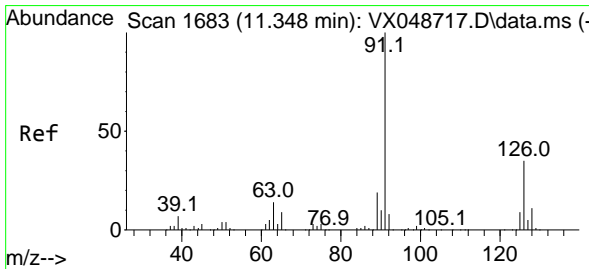
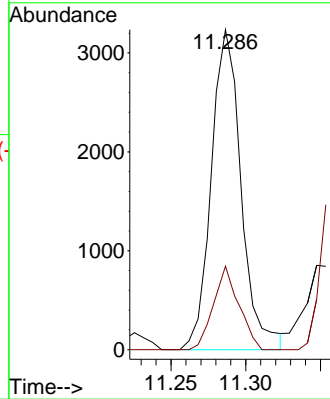
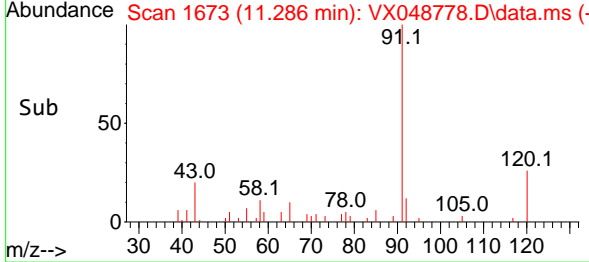


#78  
 n-propylbenzene  
 Concen: 0.281 ug/l  
 RT: 11.286 min Scan# 1673  
 Delta R.T. -0.000 min  
 Lab File: VX048778.D  
 Acq: 09 Dec 2025 13:06

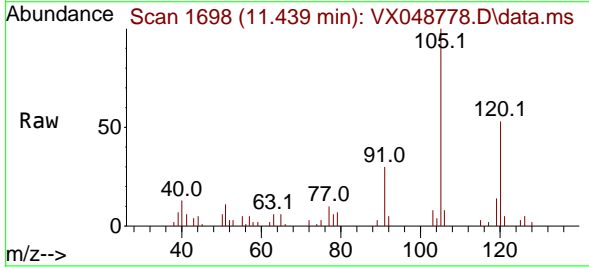
Instrument : MSVOA\_X  
 ClientSampleId : CHASE-B



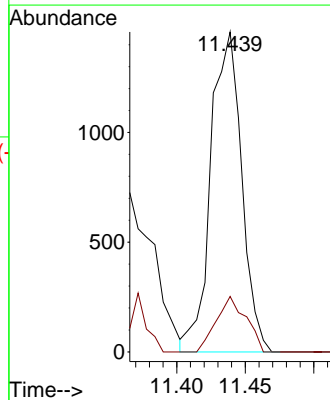
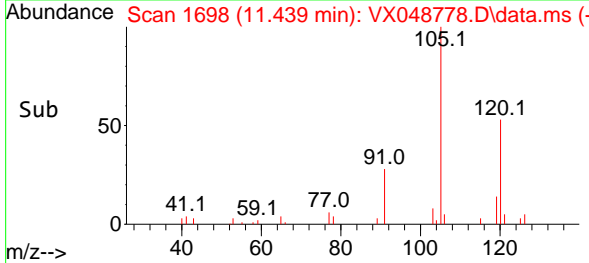
Tgt Ion: 91 Resp: 4497  
 Ion Ratio Lower Upper  
 91 100  
 120 22.2 11.4 34.2



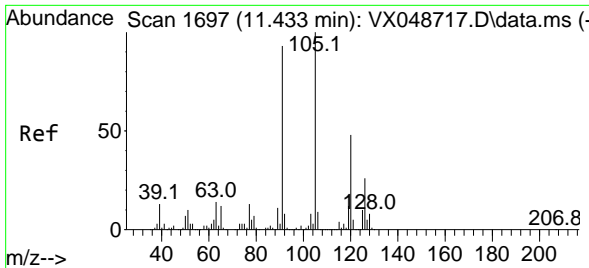
#79  
 2-Chlorotoluene  
 Concen: 0.234 ug/l  
 RT: 11.439 min Scan# 1698  
 Delta R.T. 0.091 min  
 Lab File: VX048778.D  
 Acq: 09 Dec 2025 13:06



Tgt Ion: 91 Resp: 2280  
 Ion Ratio Lower Upper  
 91 100  
 126 16.8 16.8 50.3

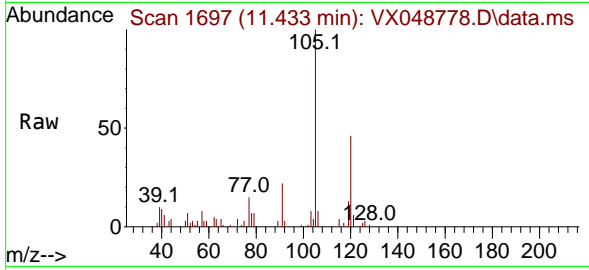




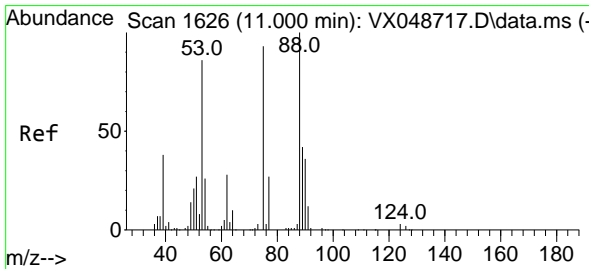
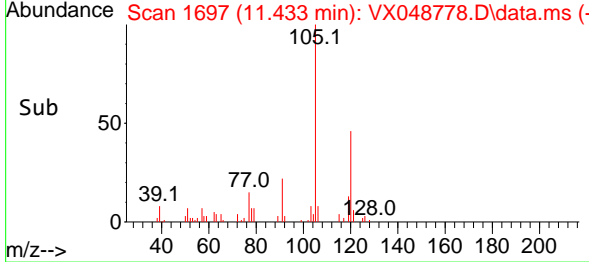
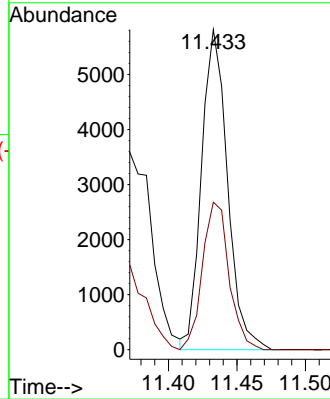


#80  
 1,3,5-Trimethylbenzene  
 Concen: 0.674 ug/l  
 RT: 11.433 min Scan# 11  
 Delta R.T. -0.000 min  
 Lab File: VX048778.D  
 Acq: 09 Dec 2025 13:06

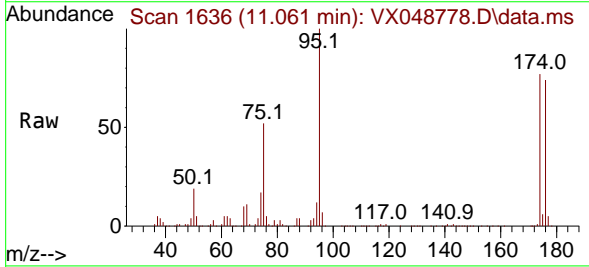
Instrument :  
 MSVOA\_X  
 ClientSampleId :  
 CHASE-B



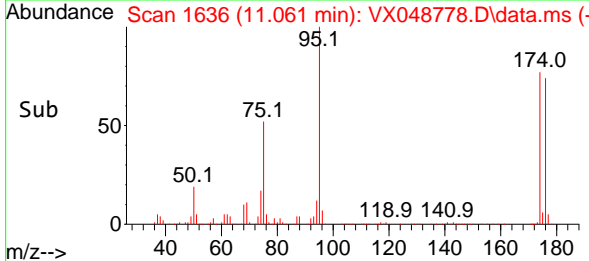
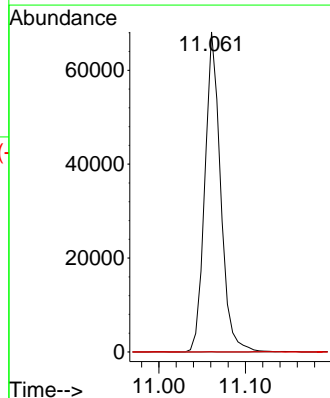
Tgt Ion: 105 Resp: 7650  
 Ion Ratio Lower Upper  
 105 100  
 120 47.2 24.4 73.2

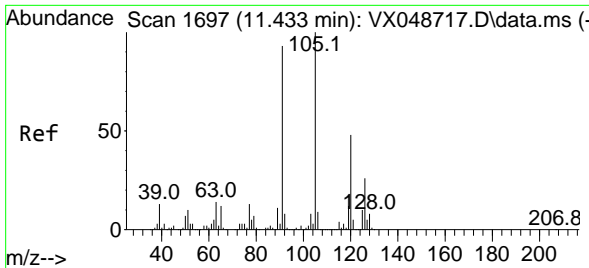


#81  
 trans-1,4-Dichloro-2-butene  
 Concen: 53.636 ug/l  
 RT: 11.061 min Scan# 1636  
 Delta R.T. 0.061 min  
 Lab File: VX048778.D  
 Acq: 09 Dec 2025 13:06



Tgt Ion: 75 Resp: 86153  
 Ion Ratio Lower Upper  
 75 100  
 53 0.0 79.9 119.9#  
 89 0.0 67.1 100.7#

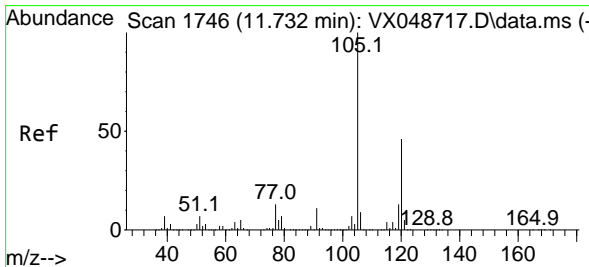
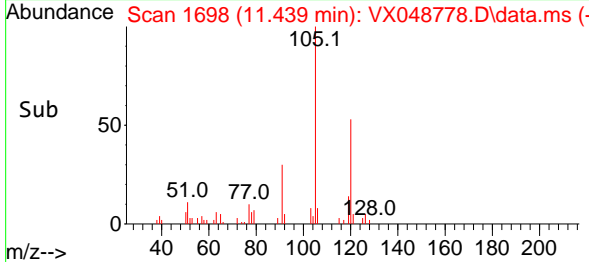
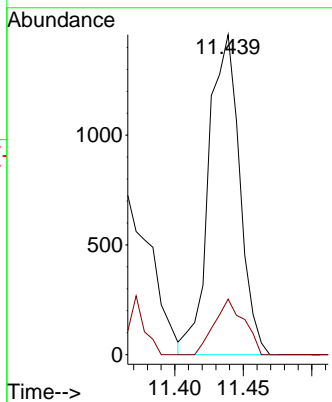
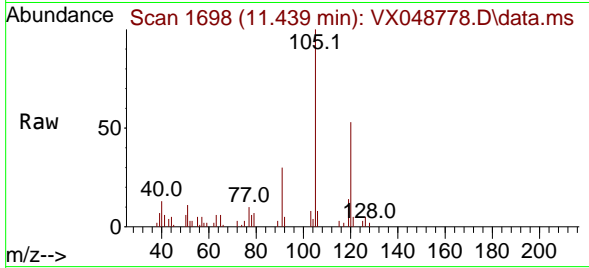




#82  
 4-Chlorotoluene  
 Concen: 0.200 ug/l  
 RT: 11.439 min Scan# 1  
 Delta R.T. 0.006 min  
 Lab File: VX048778.D  
 Acq: 09 Dec 2025 13:06

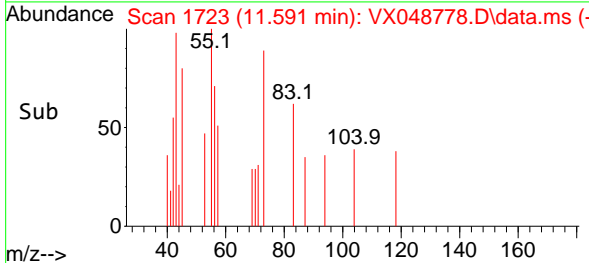
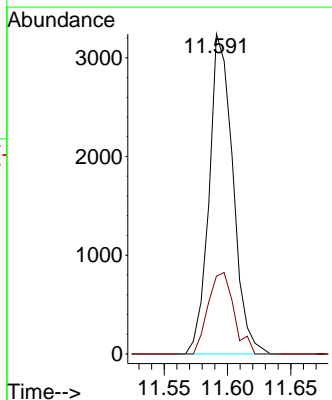
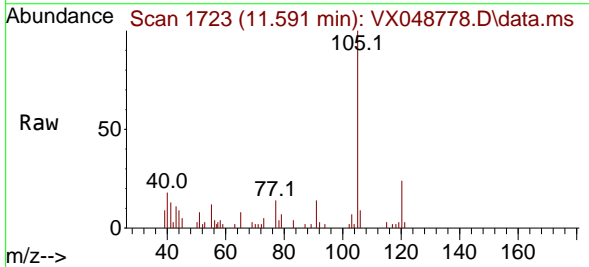
Instrument :  
 MSVOA\_X  
 ClientSampleId :  
 CHASE-B

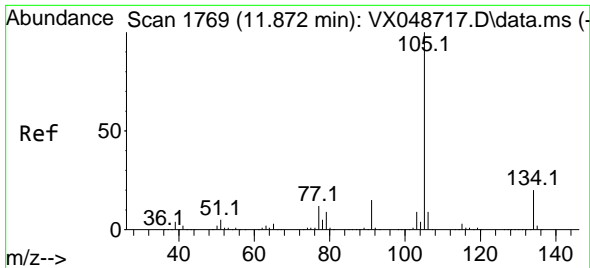
Tgt Ion: 91 Resp: 2280  
 Ion Ratio Lower Upper  
 91 100  
 126 16.8 14.7 44.1



#84  
 1,2,4-Trimethylbenzene  
 Concen: 0.370 ug/l  
 RT: 11.591 min Scan# 1723  
 Delta R.T. -0.140 min  
 Lab File: VX048778.D  
 Acq: 09 Dec 2025 13:06

Tgt Ion: 105 Resp: 4235  
 Ion Ratio Lower Upper  
 105 100  
 120 27.6 22.3 66.8

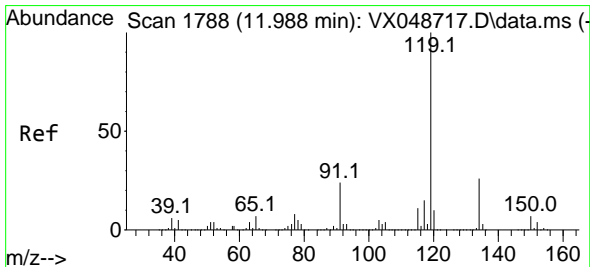
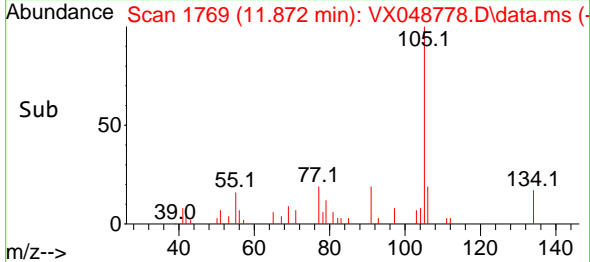
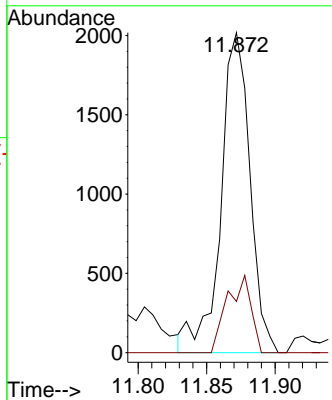
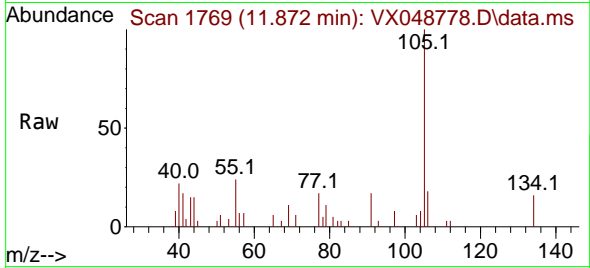




#85  
 sec-Butylbenzene  
 Concen: 0.209 ug/l  
 RT: 11.872 min Scan# 1769  
 Delta R.T. -0.000 min  
 Lab File: VX048778.D  
 Acq: 09 Dec 2025 13:06

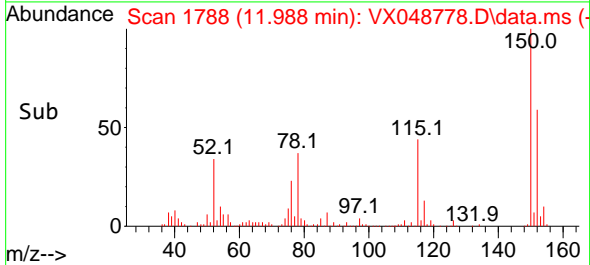
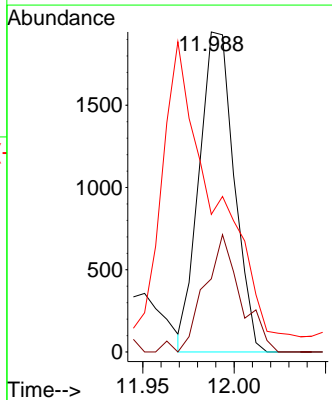
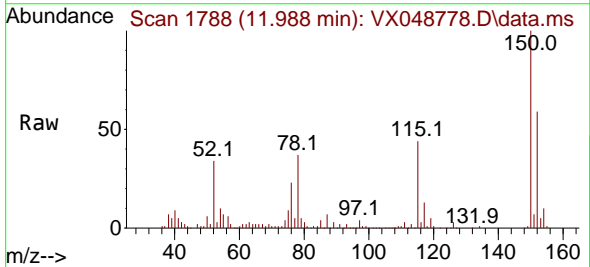
Instrument : MSVOA\_X  
 ClientSampleId : CHASE-B

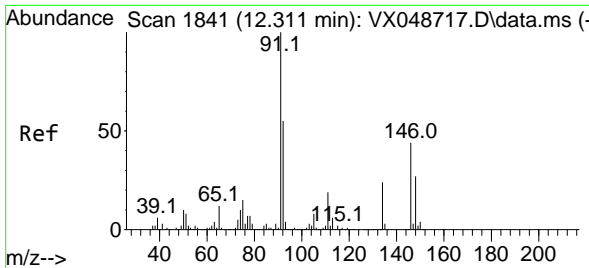
Tgt Ion:105 Resp: 2980  
 Ion Ratio Lower Upper  
 105 100  
 134 19.8 9.8 29.5



#86  
 p-Isopropyltoluene  
 Concen: 0.212 ug/l  
 RT: 11.988 min Scan# 1788  
 Delta R.T. -0.000 min  
 Lab File: VX048778.D  
 Acq: 09 Dec 2025 13:06

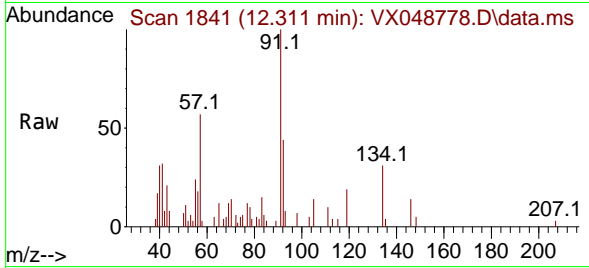
Tgt Ion:119 Resp: 2594  
 Ion Ratio Lower Upper  
 119 100  
 134 38.3 13.1 39.3  
 91 0.0 11.8 35.4#





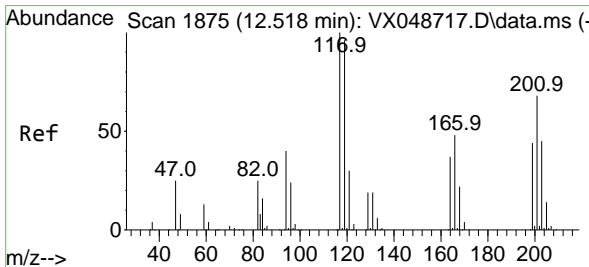
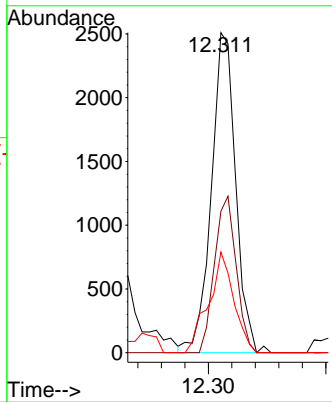
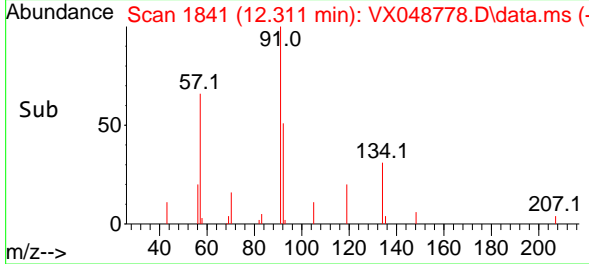
#89  
 n-Butylbenzene  
 Concen: 0.316 ug/l  
 RT: 12.311 min Scan# 1841  
 Delta R.T. -0.000 min  
 Lab File: VX048778.D  
 Acq: 09 Dec 2025 13:06

Instrument : MSVOA\_X  
 ClientSampleId : CHASE-B

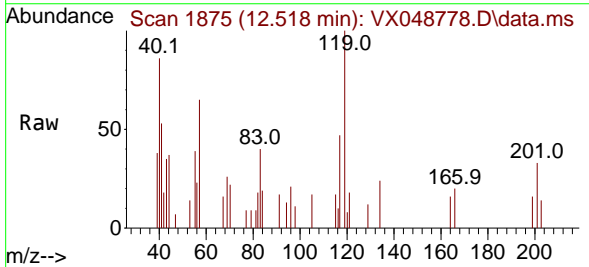


Tgt Ion: 91 Resp: 3610

Ion	Ratio	Lower	Upper
91	100		
92	43.6	27.1	81.3
134	32.7	12.9	38.6

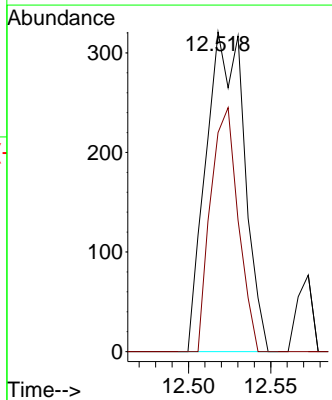
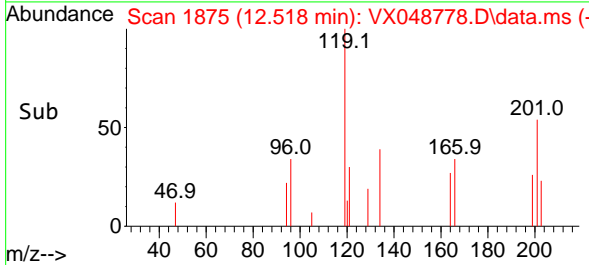


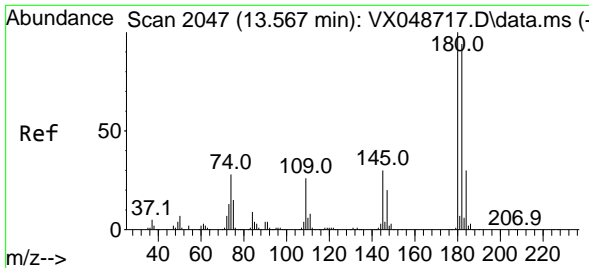
#90  
 Hexachloroethane  
 Concen: 0.209 ug/l  
 RT: 12.518 min Scan# 1875  
 Delta R.T. -0.000 min  
 Lab File: VX048778.D  
 Acq: 09 Dec 2025 13:06



Tgt Ion: 117 Resp: 520

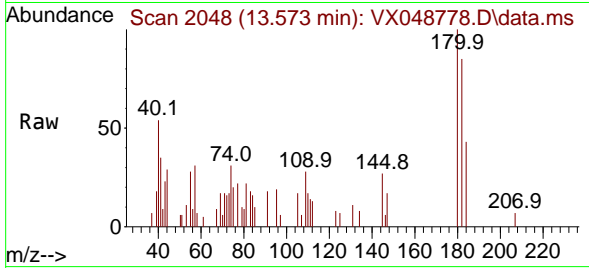
Ion	Ratio	Lower	Upper
117	100		
201	55.0	36.4	109.1



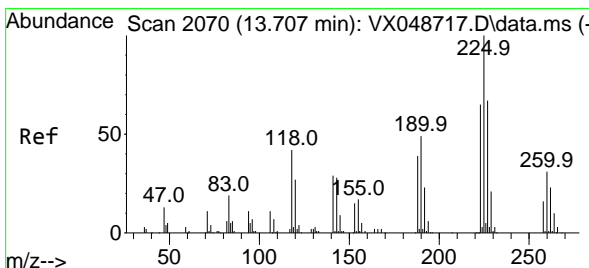
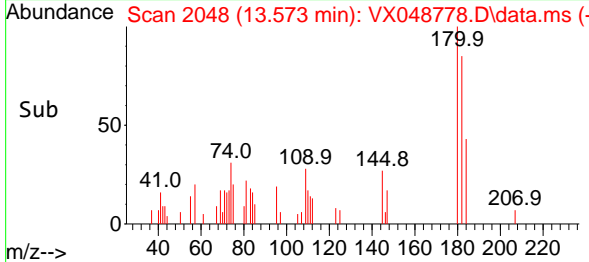
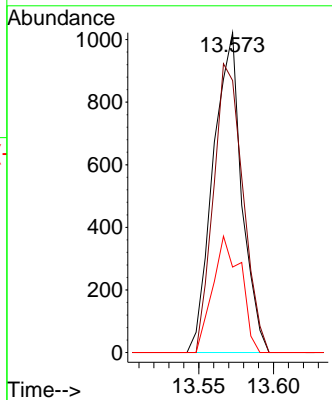


#93  
 1,2,4-Trichlorobenzene  
 Concen: 0.313 ug/l  
 RT: 13.573 min Scan# 2048  
 Delta R.T. 0.006 min  
 Lab File: VX048778.D  
 Acq: 09 Dec 2025 13:06

Instrument :  
 MSVOA\_X  
 ClientSampleId :  
 CHASE-B

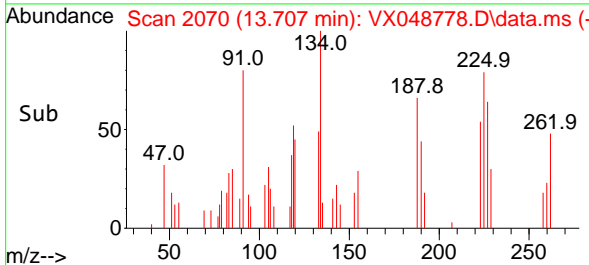
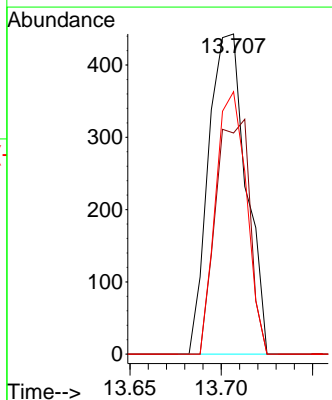
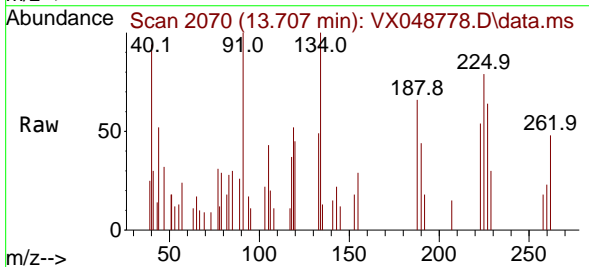


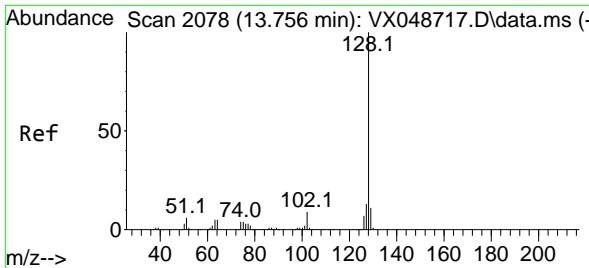
Tgt Ion:180 Resp: 1363  
 Ion Ratio Lower Upper  
 180 100  
 182 92.8 46.9 140.8  
 145 35.6 15.1 45.3



#94  
 Hexachlorobutadiene  
 Concen: 0.352 ug/l  
 RT: 13.707 min Scan# 2070  
 Delta R.T. -0.000 min  
 Lab File: VX048778.D  
 Acq: 09 Dec 2025 13:06

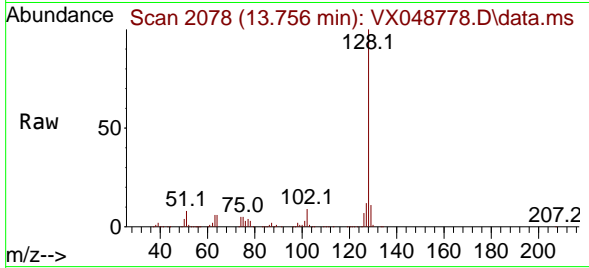
Tgt Ion:225 Resp: 634  
 Ion Ratio Lower Upper  
 225 100  
 223 66.6 33.0 98.9  
 227 67.4 32.9 98.7



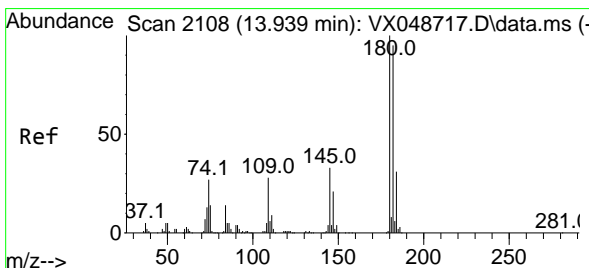
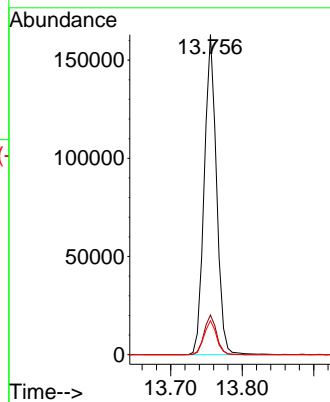
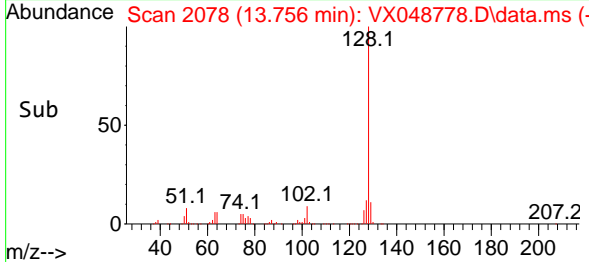


#95  
 Naphthalene  
 Concen: 16.976 ug/l  
 RT: 13.756 min Scan# 2078  
 Delta R.T. -0.000 min  
 Lab File: VX048778.D  
 Acq: 09 Dec 2025 13:06

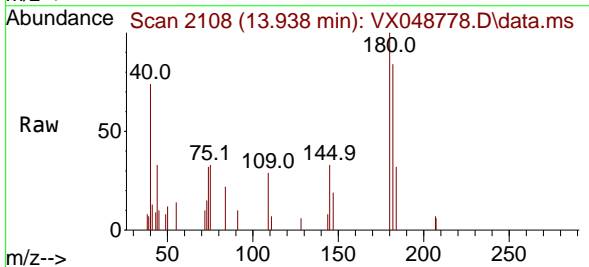
Instrument :  
 MSVOA\_X  
 ClientSampleId :  
 CHASE-B



Tgt Ion:128 Resp: 194012  
 Ion Ratio Lower Upper  
 128 100  
 127 12.6 10.2 15.2  
 129 10.9 8.6 13.0



#96  
 1,2,3-Trichlorobenzene  
 Concen: 0.295 ug/l  
 RT: 13.938 min Scan# 2108  
 Delta R.T. -0.000 min  
 Lab File: VX048778.D  
 Acq: 09 Dec 2025 13:06



Tgt Ion:180 Resp: 1184  
 Ion Ratio Lower Upper  
 180 100  
 182 103.0 48.0 144.2  
 145 34.5 16.6 49.8

