

Data Path : Z:\voasrv\HPCHEM1\MSVOA\_X\Data\VX120925\  
 Data File : VX048779.D  
 Acq On : 09 Dec 2025 13:26  
 Operator : JC/MD  
 Sample : Q3803-03  
 Misc : 5.0mL/MSVOA\_X/WATER  
 ALS Vial : 13 Sample Multiplier: 1

Instrument :  
 MSVOA\_X  
 ClientSampleId :  
 CHASE-C

Quant Time: Dec 10 00:20:56 2025  
 Quant Method : Z:\voasrv\HPCHEM1\MSVOA\_X\Method\82X120425W.M  
 Quant Title : SW846 8260  
 QLast Update : Fri Dec 05 03:27:34 2025  
 Response via : Initial Calibration

Compound	R.T.	QIon	Response	Conc	Units	Dev(Min)
Internal Standards						
1) Pentafluorobenzene	5.538	168	172970	50.000	ug/l	0.00
34) 1,4-Difluorobenzene	6.745	114	357782	50.000	ug/l	0.00
63) Chlorobenzene-d5	10.037	117	381992	50.000	ug/l	0.00
72) 1,4-Dichlorobenzene-d4	12.000	152	203775	50.000	ug/l	0.00
System Monitoring Compounds						
33) 1,2-Dichloroethane-d4	5.940	65	131669	56.715	ug/l	0.00
Spiked Amount	50.000	Range 78 - 117	Recovery	=	113.440%	
35) Dibromofluoromethane	5.373	113	114500	46.479	ug/l	0.00
Spiked Amount	50.000	Range 75 - 124	Recovery	=	92.960%	
50) Toluene-d8	8.635	98	400978	46.435	ug/l	0.00
Spiked Amount	50.000	Range 92 - 112	Recovery	=	92.880%	
62) 4-Bromofluorobenzene	11.061	95	178250	59.862	ug/l	0.00
Spiked Amount	50.000	Range 83 - 123	Recovery	=	119.720%	
Target Compounds						
						Qvalue
5) Bromomethane	1.630	94	300	0.205	ug/l	98
10) Methyl Iodide	2.471	142	883	0.315	ug/l #	94
11) Tert butyl alcohol	2.934	59	2901	7.740	ug/l #	91
13) Acrolein	2.246	56	641	41.664	ug/l #	41
15) Acrylonitrile	3.081	53	611	0.523	ug/l #	80
16) Acetone	2.374	43	81455	91.652	ug/l	98
17) Carbon Disulfide	2.520	76	1689	0.290	ug/l #	93
18) Methyl Acetate	2.697	43	7506	3.002	ug/l	98
20) Methylene Chloride	2.794	84	146390	65.899	ug/l	97
25) 2-Butanone	4.556	43	11252	8.578	ug/l	95
29) Tetrahydrofuran	5.007	42	297	0.297	ug/l #	52
36) 1,1-Dichloropropene	5.544	75	13828	4.098	ug/l #	48
38) Carbon Tetrachloride	5.532	117	17604	4.606	ug/l #	15
40) Benzene	6.025	78	461432	46.133	ug/l	100
42) 1,2-Dichloroethane	6.025	62	4195	1.185	ug/l #	73
43) Isopropyl Acetate	6.318	43	16388	2.684	ug/l	94
48) Methyl methacrylate	7.781	41	62383	20.314	ug/l #	41
49) 1,4-Dioxane	7.781	88	26	0.616	ug/l #	1
51) 4-Methyl-2-Pentanone	8.555	43	547632	144.521	ug/l	92
52) Toluene	8.702	92	268758	44.559	ug/l	98
54) cis-1,3-Dichloropropene	8.531	75	24742	6.122	ug/l #	67
55) 1,1,2-Trichloroethane	9.000	97	1698	0.700	ug/l #	19
56) Ethyl methacrylate	9.013	69	982	0.259	ug/l #	79
57) 1,3-Dichloropropane	9.464	76	2144	0.531	ug/l #	42
59) 2-Hexanone	9.464	43	27451	10.320	ug/l #	53
67) Ethyl Benzene	10.177	91	43974	3.223	ug/l	95
68) m/p-Xylenes	10.281	106	83551	15.720	ug/l	98
69) o-Xylene	10.622	106	71940	14.445	ug/l	98
70) Styrene	10.640	104	18392	2.151	ug/l #	42
74) N-amyl acetate	10.836	43	1278	0.214	ug/l #	1
76) 1,2,3-Trichloropropane	11.061	75	89253	23.516	ug/l #	30
78) n-propylbenzene	11.287	91	4257	0.268	ug/l	96
80) 1,3,5-Trimethylbenzene	11.433	105	9502	0.842	ug/l	96
81) trans-1,4-Dichloro-2-b...	11.061	75	89253	55.860	ug/l #	3
84) 1,2,4-Trimethylbenzene	11.591	105	5515	0.484	ug/l	79
85) sec-Butylbenzene	11.732	105	58268	4.099	ug/l #	57

Data Path : Z:\voasrv\HPCHEM1\MSVOA\_X\Data\VX120925\  
Data File : VX048779.D  
Acq On : 09 Dec 2025 13:26  
Operator : JC/MD  
Sample : Q3803-03  
Misc : 5.0mL/MSVOA\_X/WATER  
ALS Vial : 13 Sample Multiplier: 1

Instrument :  
MSVOA\_X  
ClientSampleId :  
CHASE-C

Quant Time: Dec 10 00:20:56 2025  
Quant Method : Z:\voasrv\HPCHEM1\MSVOA\_X\Method\82X120425W.M  
Quant Title : SW846 8260  
QLast Update : Fri Dec 05 03:27:34 2025  
Response via : Initial Calibration

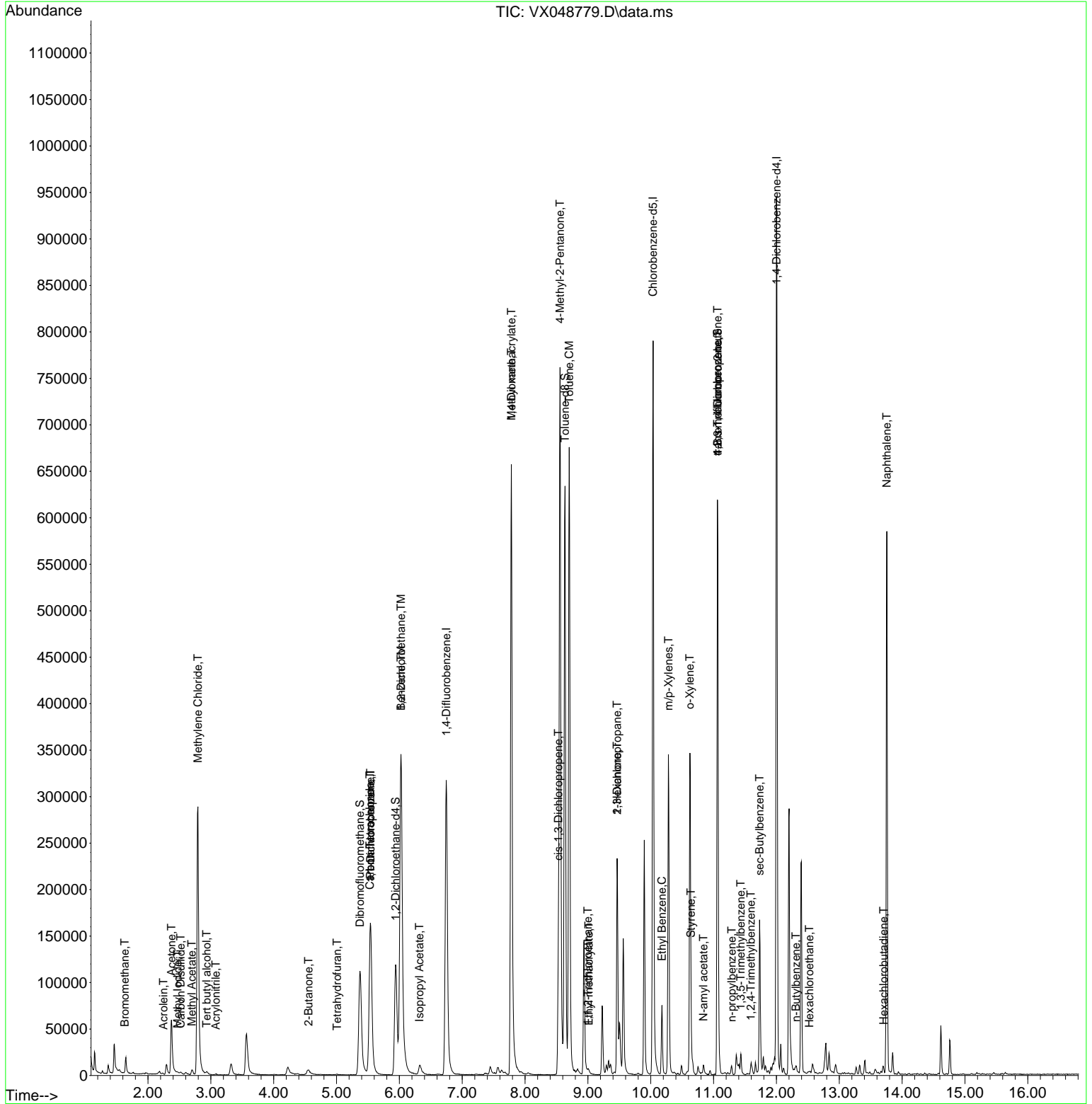
Compound	R.T.	QIon	Response	Conc	Units	Dev(Min)
89) n-Butylbenzene	12.311	91	2580	0.227	ug/l #	80
90) Hexachloroethane	12.524	117	542	0.219	ug/l #	20
94) Hexachlorobutadiene	13.707	225	409	0.229	ug/l	95
95) Naphthalene	13.756	128	353978	30.772	ug/l	100

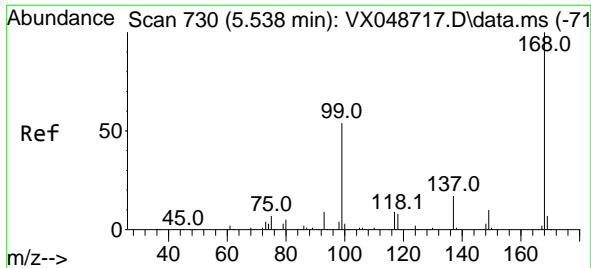
(#) = qualifier out of range (m) = manual integration (+) = signals summed

Data Path : Z:\voasrv\HPCHEM1\MSVOA\_X\Data\VX120925\  
 Data File : VX048779.D  
 Acq On : 09 Dec 2025 13:26  
 Operator : JC/MD  
 Sample : Q3803-03  
 Misc : 5.0mL/MSVOA\_X/WATER  
 ALS Vial : 13 Sample Multiplier: 1

Instrument :  
 MSVOA\_X  
 ClientSampleId :  
 CHASE-C

Quant Time: Dec 10 00:20:56 2025  
 Quant Method : Z:\voasrv\HPCHEM1\MSVOA\_X\Method\82X120425W.M  
 Quant Title : SW846 8260  
 QLast Update : Fri Dec 05 03:27:34 2025  
 Response via : Initial Calibration

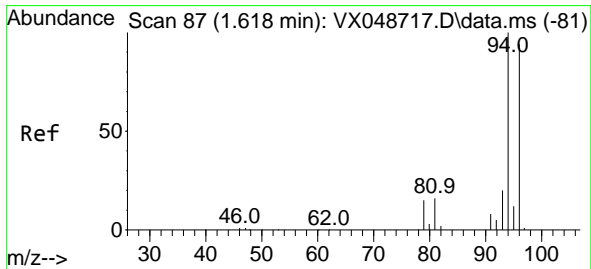
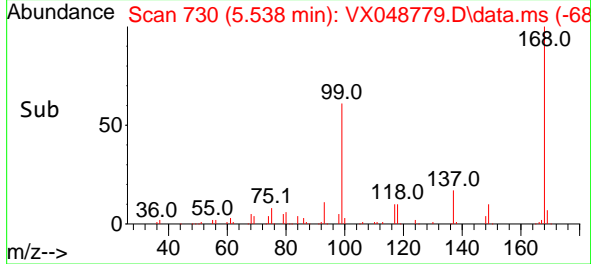
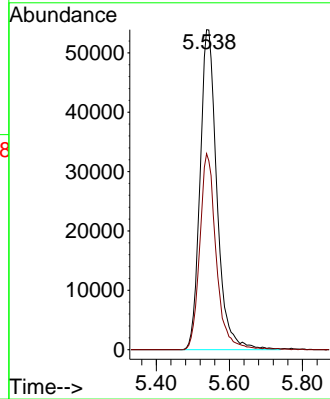
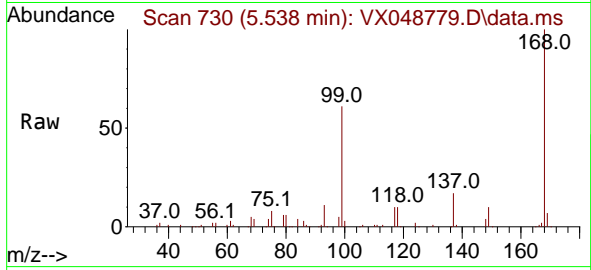




#1  
 Pentafluorobenzene  
 Concen: 50.000 ug/l  
 RT: 5.538 min Scan# 71  
 Delta R.T. -0.000 min  
 Lab File: VX048779.D  
 Acq: 09 Dec 2025 13:26

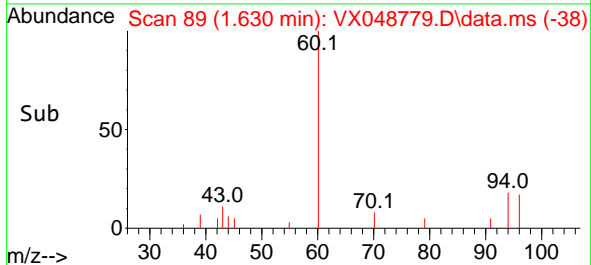
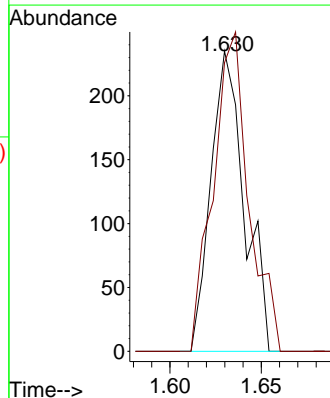
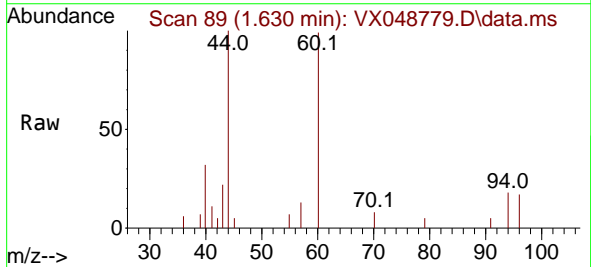
Instrument :  
 MSVOA\_X  
 ClientSampleId :  
 CHASE-C

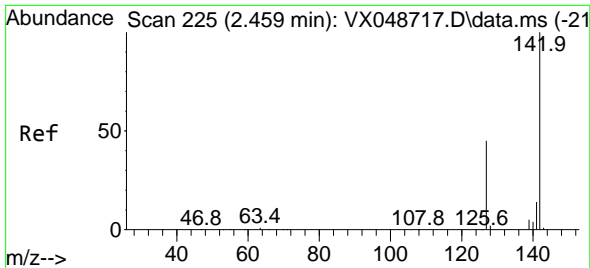
Tgt Ion:168 Resp: 172970  
 Ion Ratio Lower Upper  
 168 100  
 99 61.3 44.2 66.4



#5  
 Bromomethane  
 Concen: 0.205 ug/l  
 RT: 1.630 min Scan# 89  
 Delta R.T. 0.012 min  
 Lab File: VX048779.D  
 Acq: 09 Dec 2025 13:26

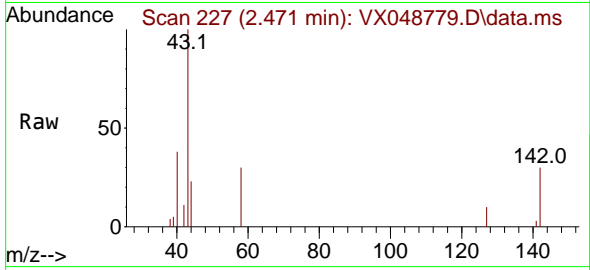
Tgt Ion: 94 Resp: 300  
 Ion Ratio Lower Upper  
 94 100  
 96 96.2 75.2 112.8



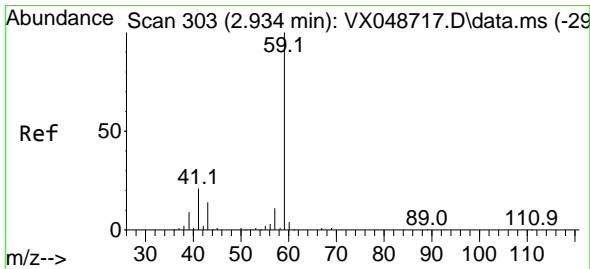
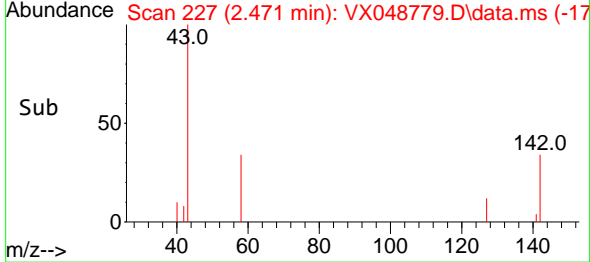
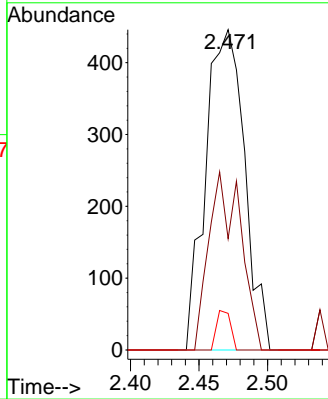


#10  
Methyl Iodide  
Concen: 0.315 ug/l  
RT: 2.471 min Scan# 21  
Delta R.T. 0.012 min  
Lab File: VX048779.D  
Acq: 09 Dec 2025 13:26

Instrument : MSVOA\_X  
ClientSampleId : CHASE-C

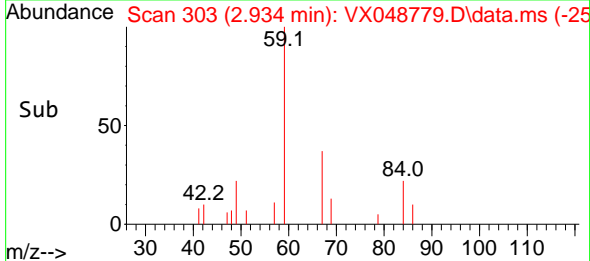
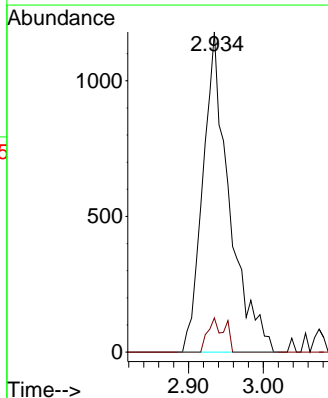
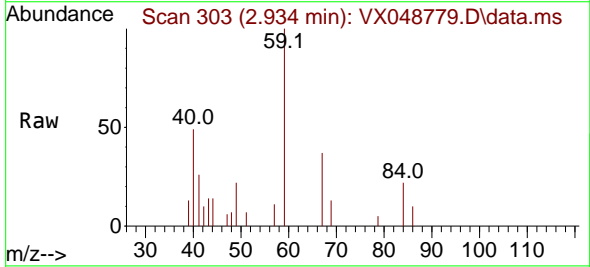


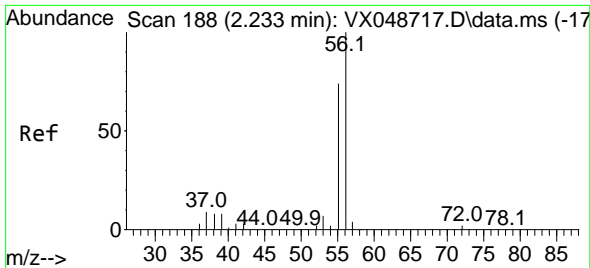
Tgt Ion:142 Resp: 883  
Ion Ratio Lower Upper  
142 100  
127 45.3 35.8 53.6  
141 4.4 11.1 16.7#



#11  
Tert butyl alcohol  
Concen: 7.740 ug/l  
RT: 2.934 min Scan# 303  
Delta R.T. 0.000 min  
Lab File: VX048779.D  
Acq: 09 Dec 2025 13:26

Tgt Ion: 59 Resp: 2901  
Ion Ratio Lower Upper  
59 100  
57 6.7 8.1 12.1#

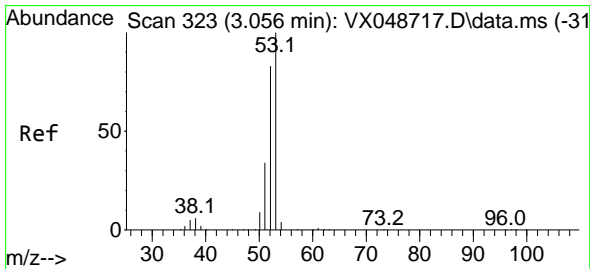
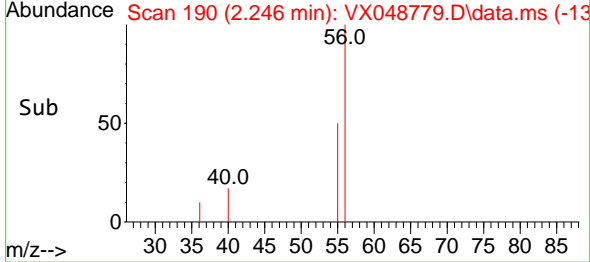
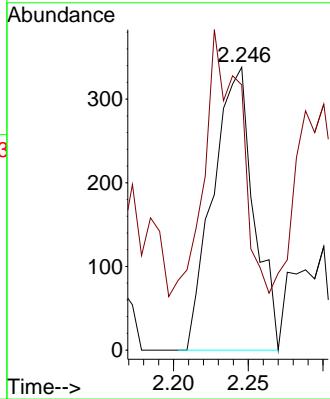
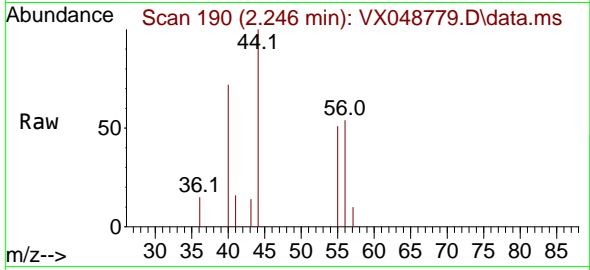




#13  
 Acrolein  
 Concen: 41.664 ug/l  
 RT: 2.246 min Scan# 11  
 Delta R.T. 0.012 min  
 Lab File: VX048779.D  
 Acq: 09 Dec 2025 13:26

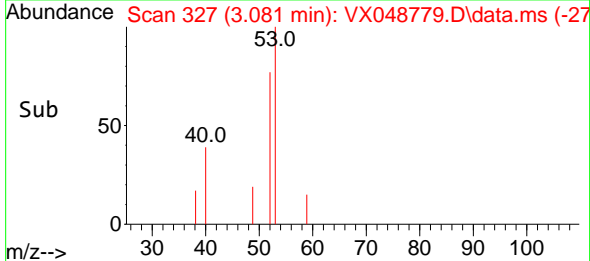
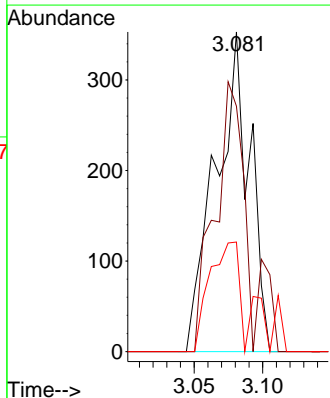
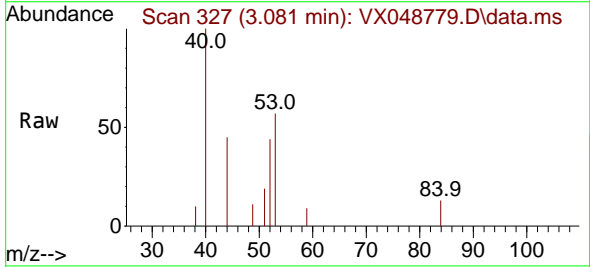
Instrument : MSVOA\_X  
 ClientSampleId : CHASE-C

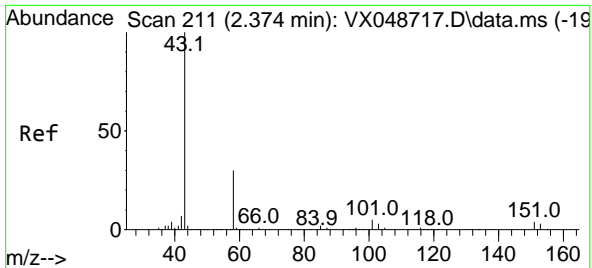
Tgt Ion: 56 Resp: 641  
 Ion Ratio Lower Upper  
 56 100  
 55 117.8 55.8 83.6#



#15  
 Acrylonitrile  
 Concen: 0.523 ug/l  
 RT: 3.081 min Scan# 327  
 Delta R.T. 0.024 min  
 Lab File: VX048779.D  
 Acq: 09 Dec 2025 13:26

Tgt Ion: 53 Resp: 611  
 Ion Ratio Lower Upper  
 53 100  
 52 81.0 66.3 99.5  
 51 0.0 28.7 43.1#

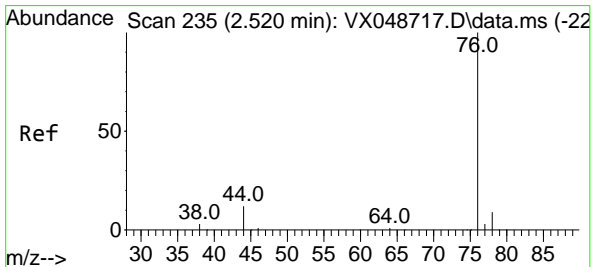
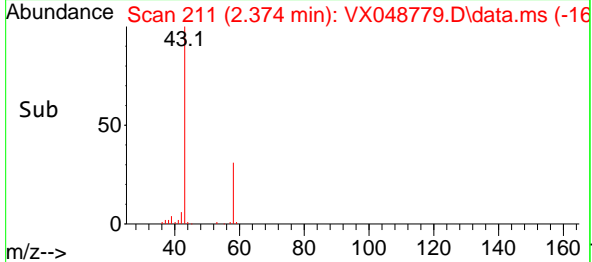
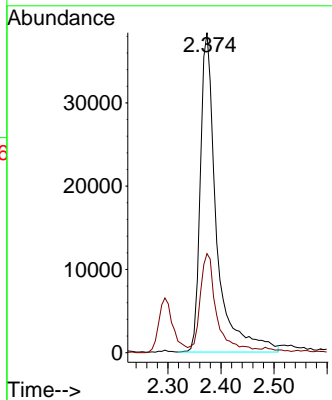
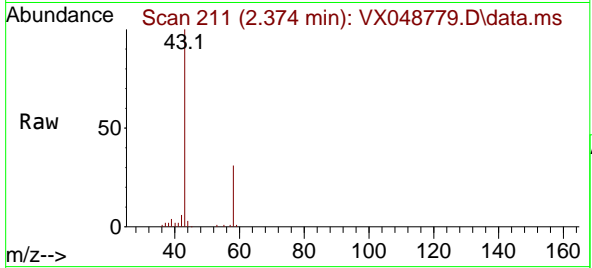




#16  
 Acetone  
 Concen: 91.652 ug/l  
 RT: 2.374 min Scan# 211  
 Delta R.T. 0.000 min  
 Lab File: VX048779.D  
 Acq: 09 Dec 2025 13:26

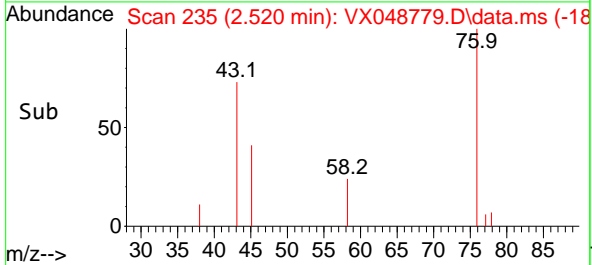
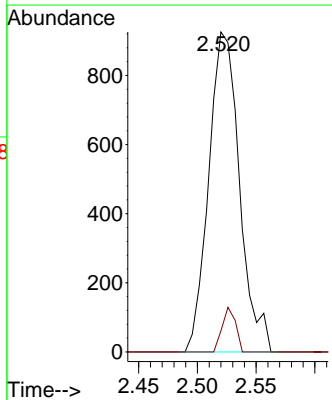
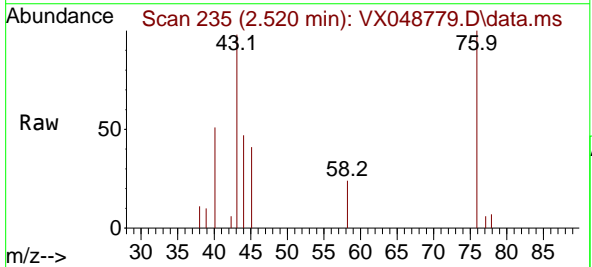
Instrument : MSVOA\_X  
 ClientSampleId : CHASE-C

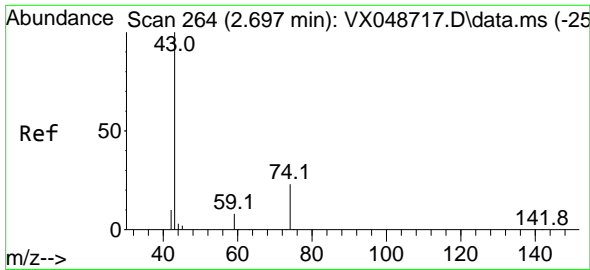
Tgt Ion: 43 Resp: 81455  
 Ion Ratio Lower Upper  
 43 100  
 58 30.2 25.0 37.4



#17  
 Carbon Disulfide  
 Concen: 0.290 ug/l  
 RT: 2.520 min Scan# 235  
 Delta R.T. 0.000 min  
 Lab File: VX048779.D  
 Acq: 09 Dec 2025 13:26

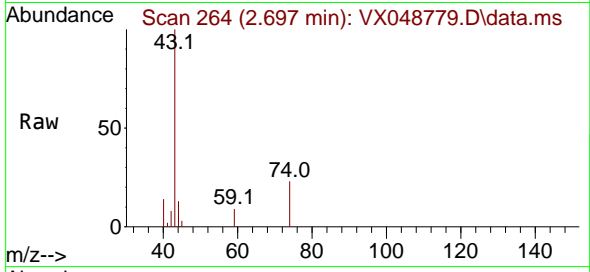
Tgt Ion: 76 Resp: 1689  
 Ion Ratio Lower Upper  
 76 100  
 78 6.6 7.4 11.2#



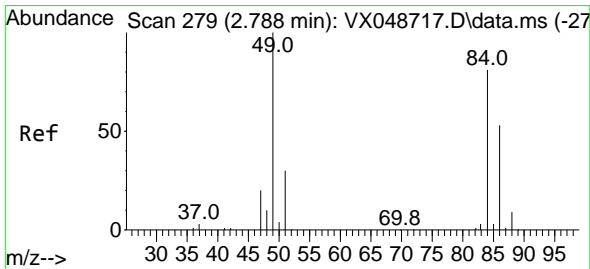
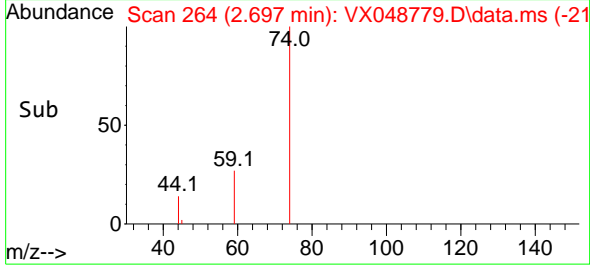
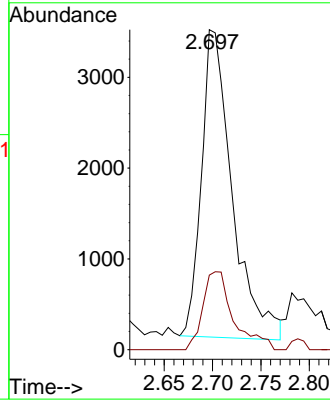


#18  
 Methyl Acetate  
 Concen: 3.002 ug/l  
 RT: 2.697 min Scan# 20  
 Delta R.T. 0.000 min  
 Lab File: VX048779.D  
 Acq: 09 Dec 2025 13:26

Instrument :  
 MSVOA\_X  
 ClientSampleId :  
 CHASE-C

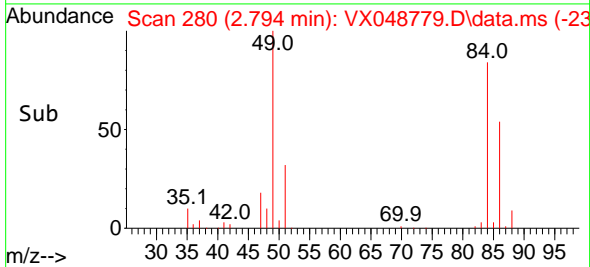
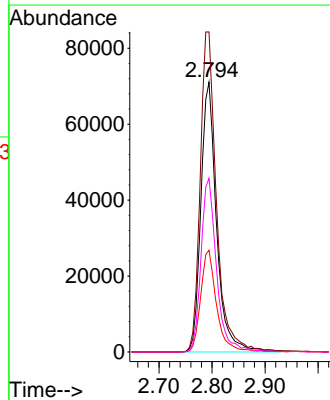
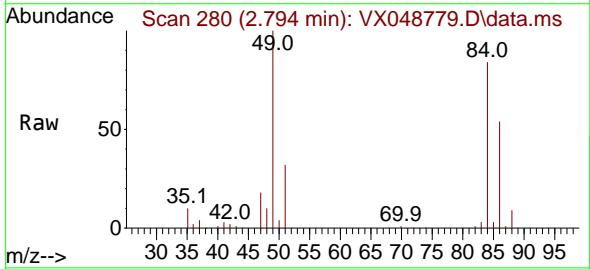


Tgt Ion: 43 Resp: 7506  
 Ion Ratio Lower Upper  
 43 100  
 74 25.2 19.2 28.8

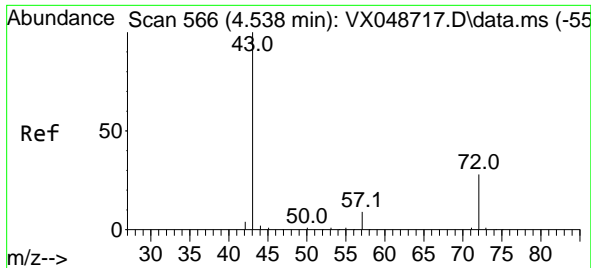


#20  
 Methylene Chloride  
 Concen: 65.899 ug/l  
 RT: 2.794 min Scan# 280  
 Delta R.T. 0.006 min  
 Lab File: VX048779.D  
 Acq: 09 Dec 2025 13:26

Tgt Ion: 84 Resp: 146390  
 Ion Ratio Lower Upper  
 84 100  
 49 118.6 98.7 148.1  
 51 37.7 29.4 44.2  
 86 64.3 52.5 78.7



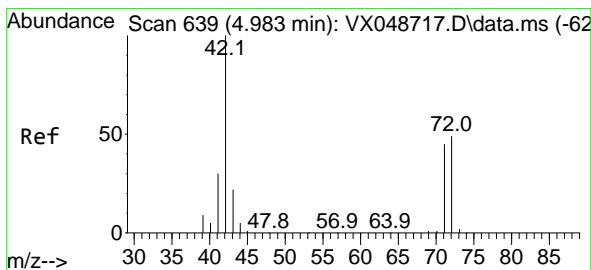
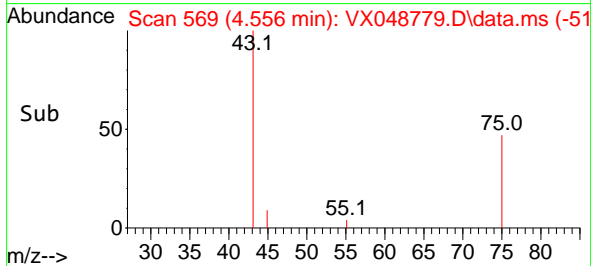
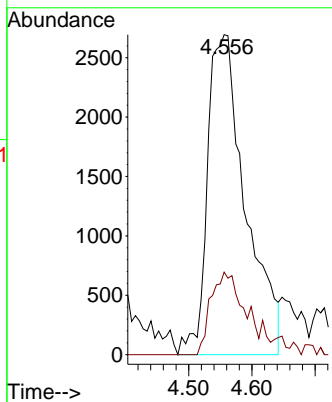
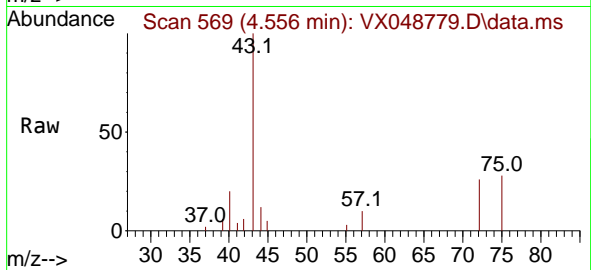




#25  
 2-Butanone  
 Concen: 8.578 ug/l  
 RT: 4.556 min Scan# 509  
 Delta R.T. 0.018 min  
 Lab File: VX048779.D  
 Acq: 09 Dec 2025 13:26

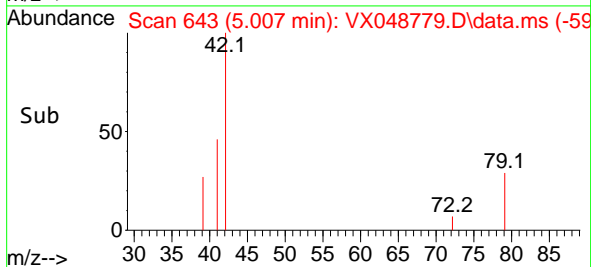
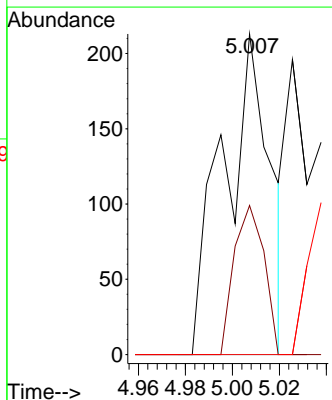
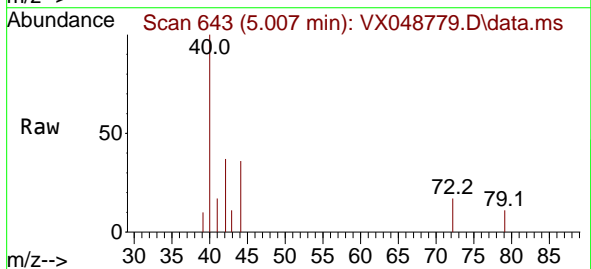
Instrument :  
 MSVOA\_X  
 ClientSampleId :  
 CHASE-C

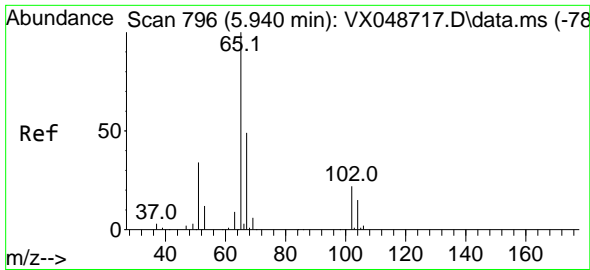
Tgt Ion: 43 Resp: 11252  
 Ion Ratio Lower Upper  
 43 100  
 72 25.8 22.6 34.0



#29  
 Tetrahydrofuran  
 Concen: 0.297 ug/l  
 RT: 5.007 min Scan# 643  
 Delta R.T. 0.024 min  
 Lab File: VX048779.D  
 Acq: 09 Dec 2025 13:26

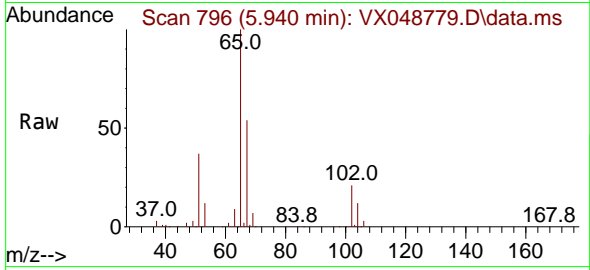
Tgt Ion: 42 Resp: 297  
 Ion Ratio Lower Upper  
 42 100  
 72 29.6 39.4 59.2#  
 71 0.0 35.8 53.6#



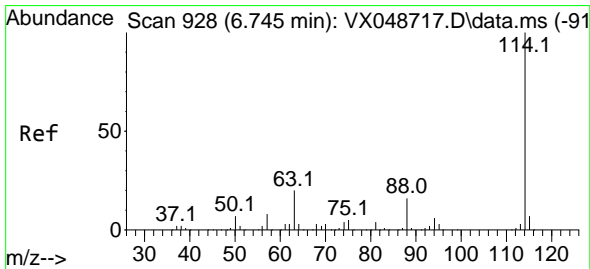
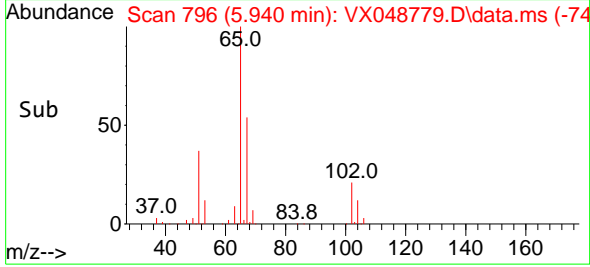
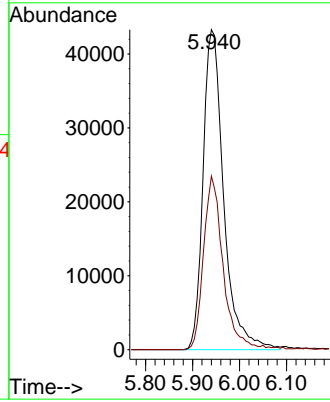


#33  
 1,2-Dichloroethane-d4  
 Concen: 56.715 ug/l  
 RT: 5.940 min Scan# 796  
 Delta R.T. 0.000 min  
 Lab File: VX048779.D  
 Acq: 09 Dec 2025 13:26

Instrument : MSVOA\_X  
 ClientSampleId : CHASE-C

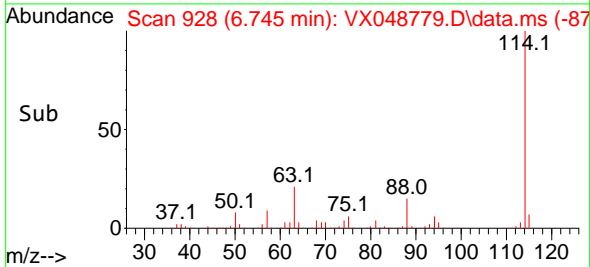
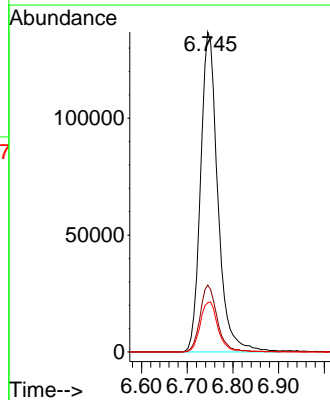
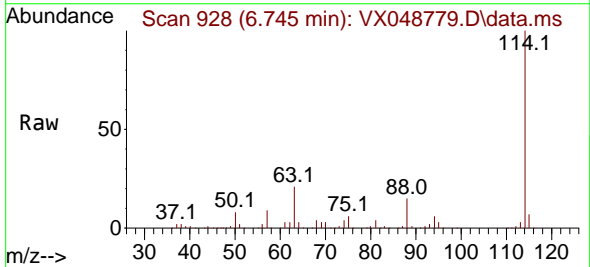


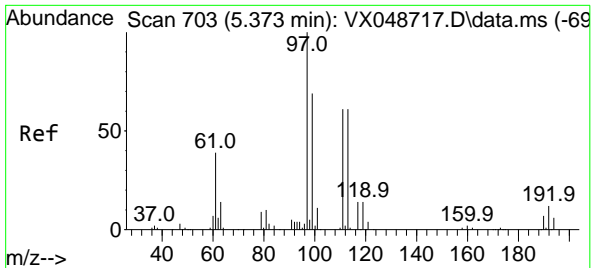
Tgt Ion: 65 Resp: 131669  
 Ion Ratio Lower Upper  
 65 100  
 67 52.0 0.0 107.4



#34  
 1,4-Difluorobenzene  
 Concen: 50.000 ug/l  
 RT: 6.745 min Scan# 928  
 Delta R.T. 0.000 min  
 Lab File: VX048779.D  
 Acq: 09 Dec 2025 13:26

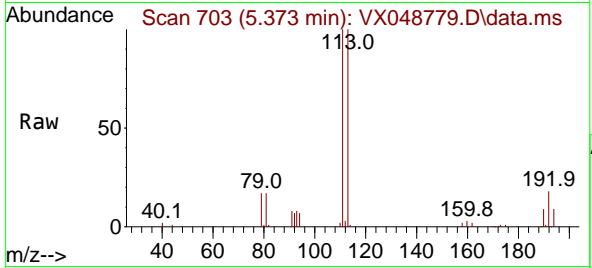
Tgt Ion: 114 Resp: 357782  
 Ion Ratio Lower Upper  
 114 100  
 63 20.9 0.0 39.0  
 88 15.4 0.0 31.8



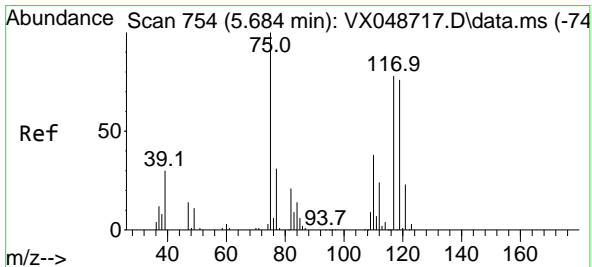
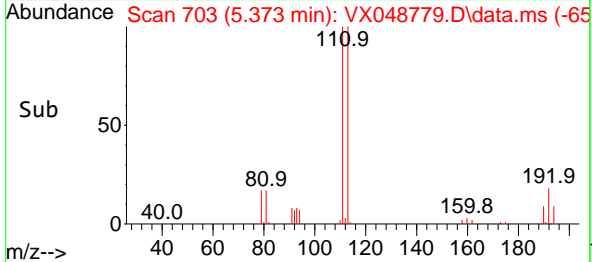
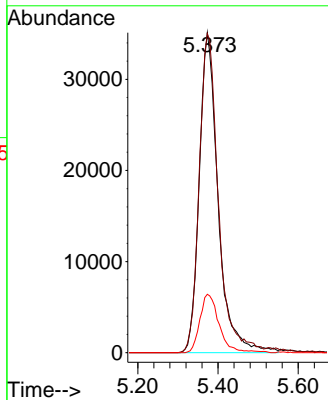


#35  
 Dibromofluoromethane  
 Concen: 46.479 ug/l  
 RT: 5.373 min Scan# 703  
 Delta R.T. 0.000 min  
 Lab File: VX048779.D  
 Acq: 09 Dec 2025 13:26

Instrument :  
 MSVOA\_X  
 ClientSampleId :  
 CHASE-C

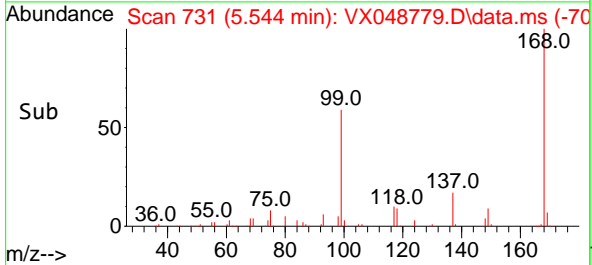
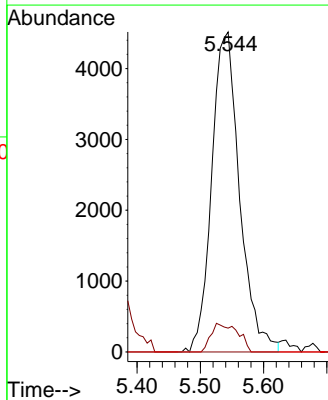
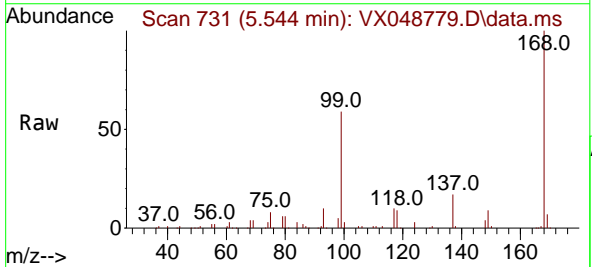


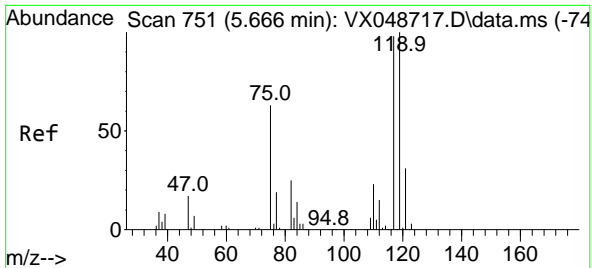
Tgt Ion:113 Resp: 114500  
 Ion Ratio Lower Upper  
 113 100  
 111 101.3 79.5 119.3  
 192 18.7 16.1 24.1



#36  
 1,1-Dichloropropene  
 Concen: 4.098 ug/l  
 RT: 5.544 min Scan# 731  
 Delta R.T. -0.140 min  
 Lab File: VX048779.D  
 Acq: 09 Dec 2025 13:26

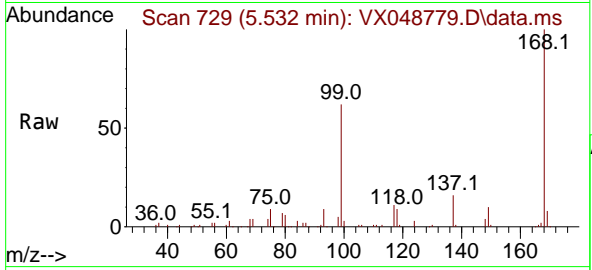
Tgt Ion: 75 Resp: 13828  
 Ion Ratio Lower Upper  
 75 100  
 110 8.5 18.6 55.8#  
 77 0.0 25.3 37.9#



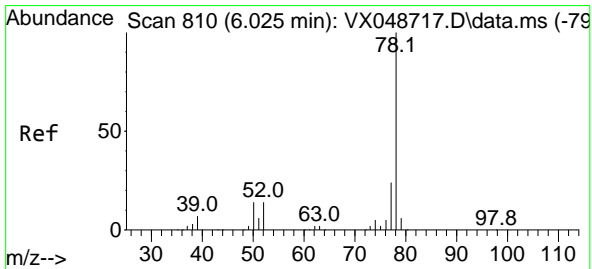
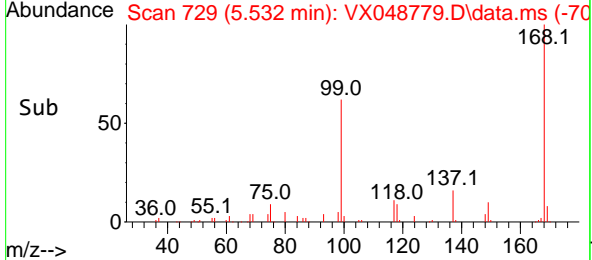
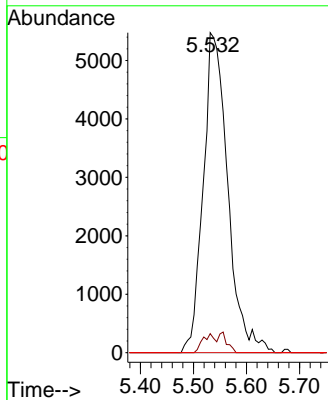


#38  
 Carbon Tetrachloride  
 Concen: 4.606 ug/l  
 RT: 5.532 min Scan# 71  
 Delta R.T. -0.134 min  
 Lab File: VX048779.D  
 Acq: 09 Dec 2025 13:26

Instrument :  
 MSVOA\_X  
 ClientSampleId :  
 CHASE-C

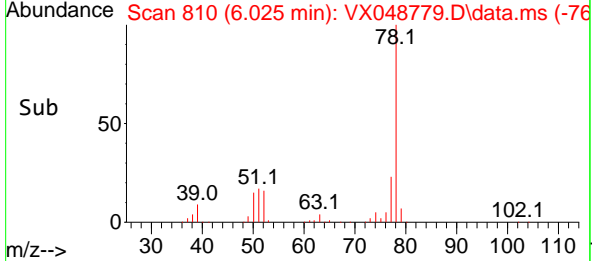
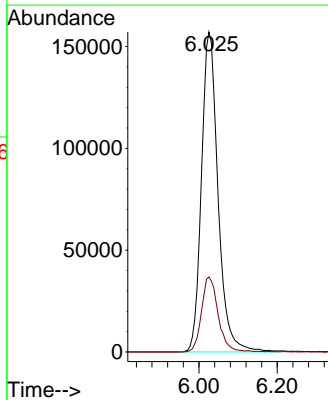
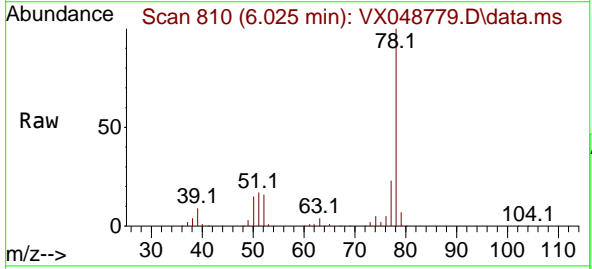


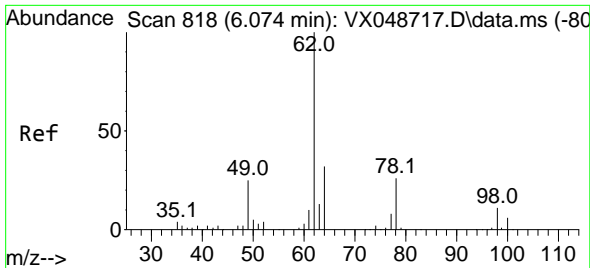
Tgt Ion:117 Resp: 17604  
 Ion Ratio Lower Upper  
 117 100  
 119 5.9 80.5 120.7#  
 121 0.0 25.4 38.0#



#40  
 Benzene  
 Concen: 46.133 ug/l  
 RT: 6.025 min Scan# 810  
 Delta R.T. 0.000 min  
 Lab File: VX048779.D  
 Acq: 09 Dec 2025 13:26

Tgt Ion: 78 Resp: 461432  
 Ion Ratio Lower Upper  
 78 100  
 77 23.5 18.8 28.2

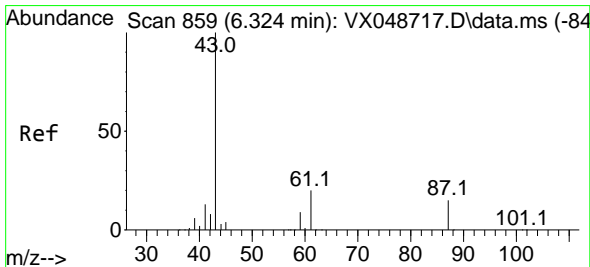
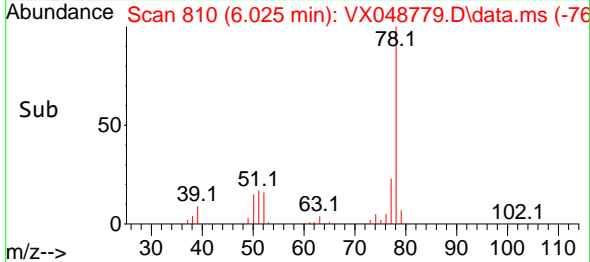
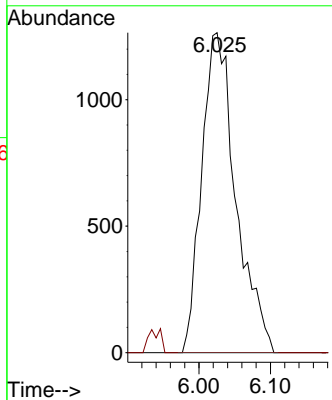
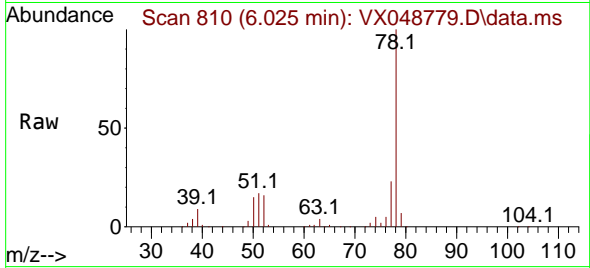




#42  
 1,2-Dichloroethane  
 Concen: 1.185 ug/l  
 RT: 6.025 min Scan# 810  
 Delta R.T. -0.049 min  
 Lab File: VX048779.D  
 Acq: 09 Dec 2025 13:26

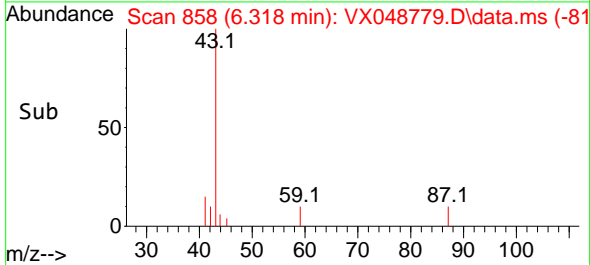
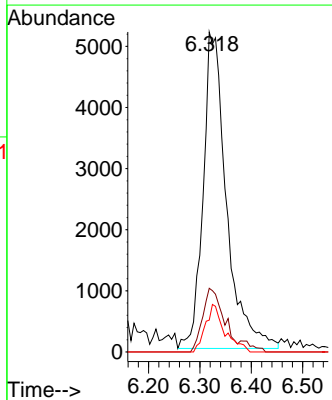
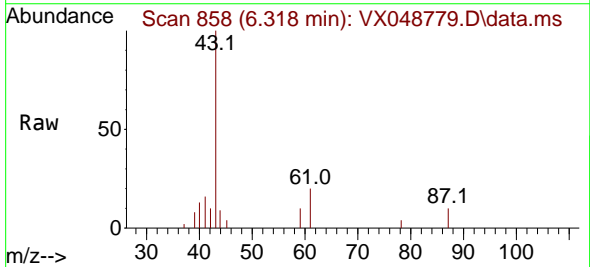
Instrument : MSVOA\_X  
 ClientSampleId : CHASE-C

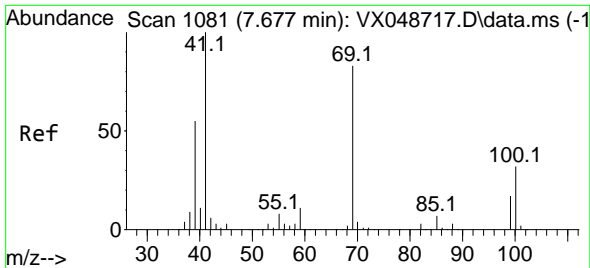
Tgt Ion	Resp	Ion Ratio	Lower	Upper
62	4195	100		
98		0.0	0.0	20.2



#43  
 Isopropyl Acetate  
 Concen: 2.684 ug/l  
 RT: 6.318 min Scan# 858  
 Delta R.T. -0.006 min  
 Lab File: VX048779.D  
 Acq: 09 Dec 2025 13:26

Tgt Ion	Resp	Ion Ratio	Lower	Upper
43	16388	100		
61		18.0	16.8	25.2
87		12.4	11.8	17.6

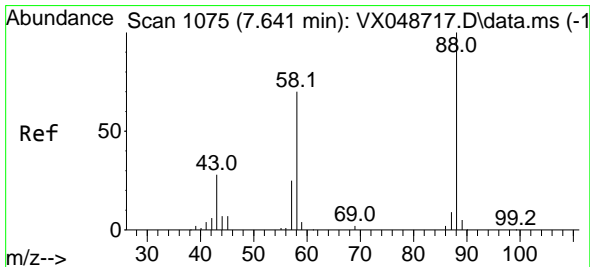
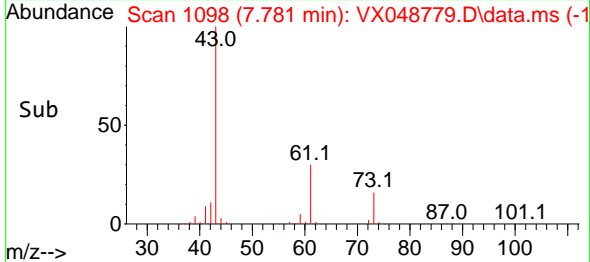
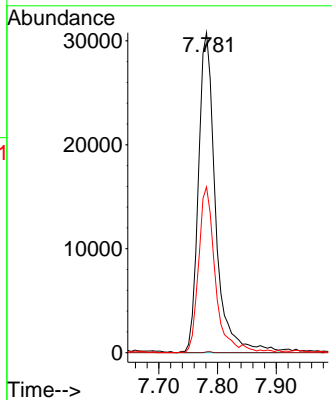
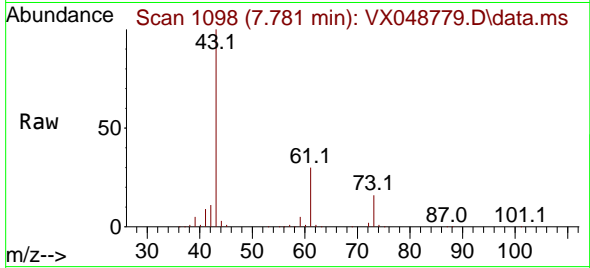




#48  
 Methyl methacrylate  
 Concen: 20.314 ug/l  
 RT: 7.781 min Scan# 1098  
 Delta R.T. 0.104 min  
 Lab File: VX048779.D  
 Acq: 09 Dec 2025 13:26

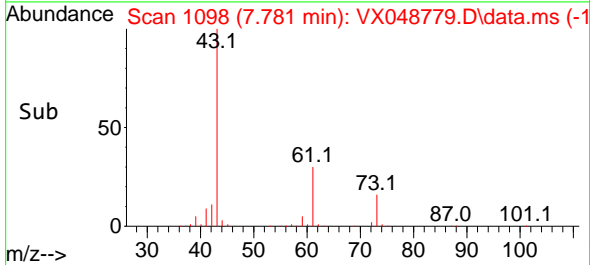
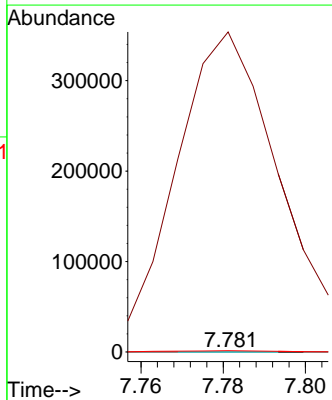
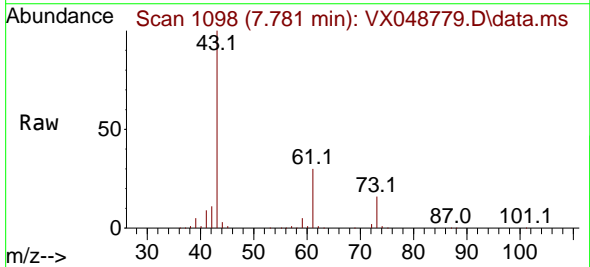
Instrument :  
 MSVOA\_X  
 ClientSampleId :  
 CHASE-C

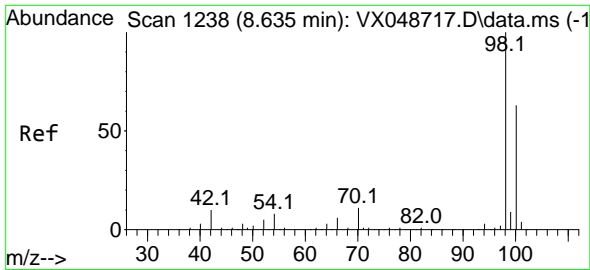
Tgt Ion: 41 Resp: 62383  
 Ion Ratio Lower Upper  
 41 100  
 69 0.1 68.5 102.7#  
 39 50.3 43.5 65.3



#49  
 1,4-Dioxane  
 Concen: 0.616 ug/l  
 RT: 7.781 min Scan# 1098  
 Delta R.T. 0.140 min  
 Lab File: VX048779.D  
 Acq: 09 Dec 2025 13:26

Tgt Ion: 88 Resp: 26  
 Ion Ratio Lower Upper  
 88 100  
 43 2612346.2 28.6 43.0#  
 58 10426.9 58.0 87.0#

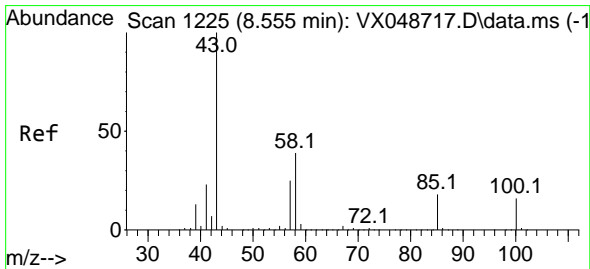
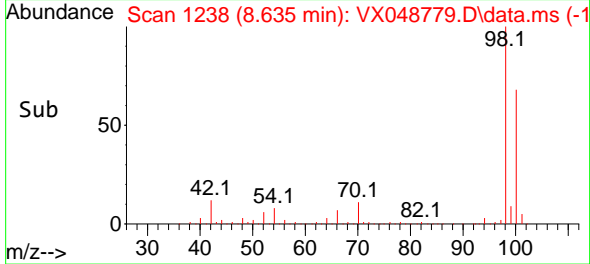
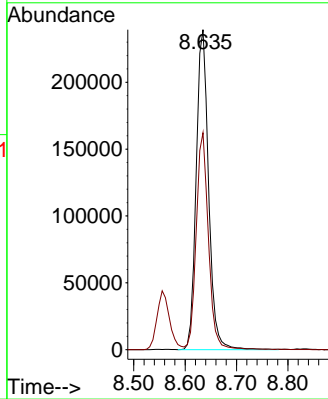
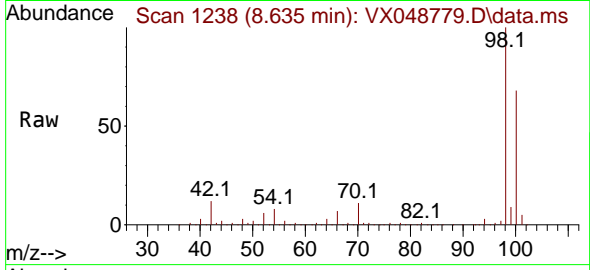




#50  
 Toluene-d8  
 Concen: 46.435 ug/l  
 RT: 8.635 min Scan# 11  
 Delta R.T. 0.000 min  
 Lab File: VX048779.D  
 Acq: 09 Dec 2025 13:26

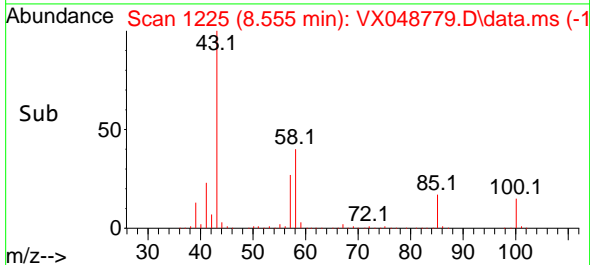
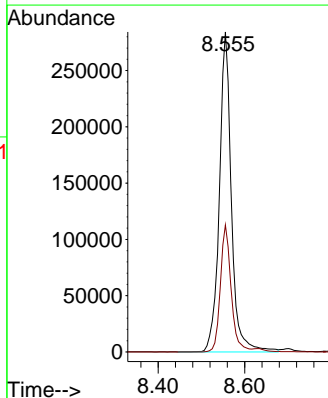
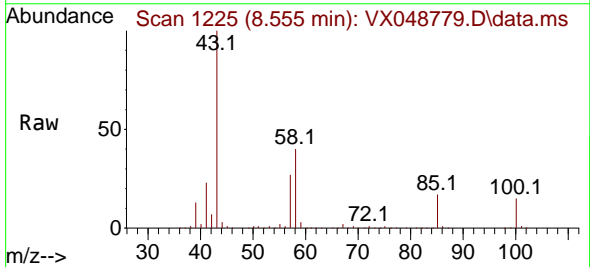
Instrument :  
 MSVOA\_X  
 ClientSampleId :  
 CHASE-C

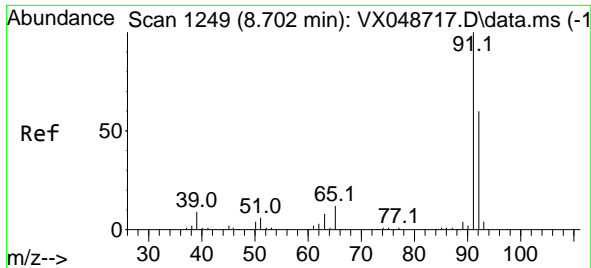
Tgt Ion: 98 Resp: 400978  
 Ion Ratio Lower Upper  
 98 100  
 100 66.7 53.4 80.0



#51  
 4-Methyl-2-Pentanone  
 Concen: 144.521 ug/l  
 RT: 8.555 min Scan# 1225  
 Delta R.T. 0.000 min  
 Lab File: VX048779.D  
 Acq: 09 Dec 2025 13:26

Tgt Ion: 43 Resp: 547632  
 Ion Ratio Lower Upper  
 43 100  
 58 35.6 32.2 48.4

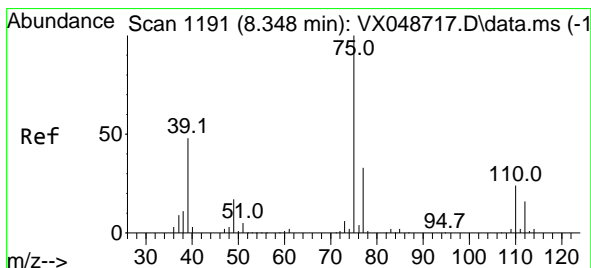
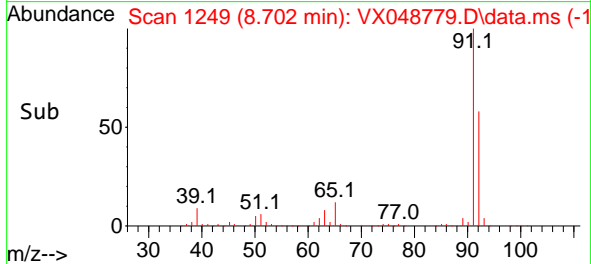
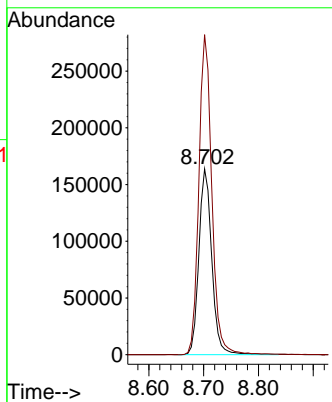
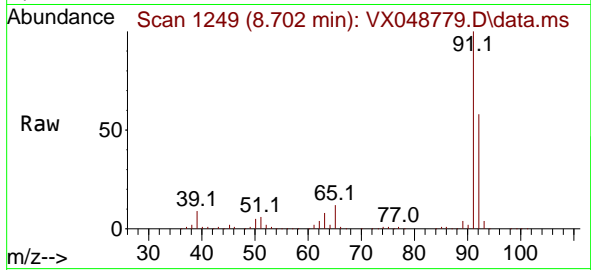




#52  
 Toluene  
 Concen: 44.559 ug/l  
 RT: 8.702 min Scan# 1121  
 Delta R.T. 0.000 min  
 Lab File: VX048779.D  
 Acq: 09 Dec 2025 13:26

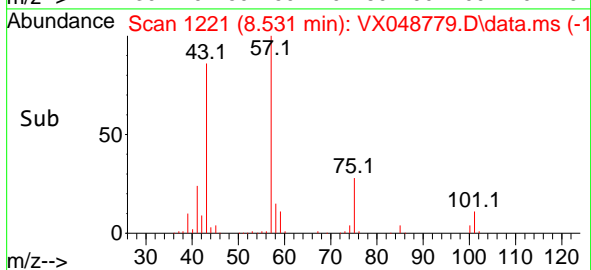
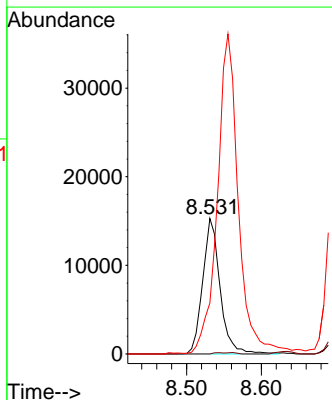
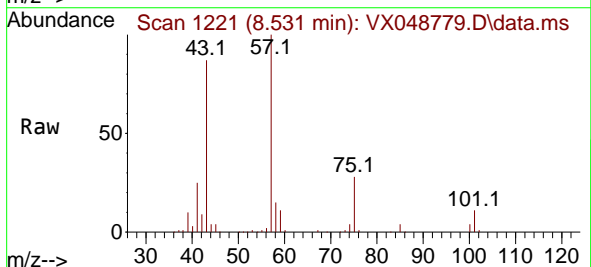
Instrument :  
 MSVOA\_X  
 ClientSampleId :  
 CHASE-C

Tgt Ion: 92 Resp: 268758  
 Ion Ratio Lower Upper  
 92 100  
 91 173.0 136.3 204.5

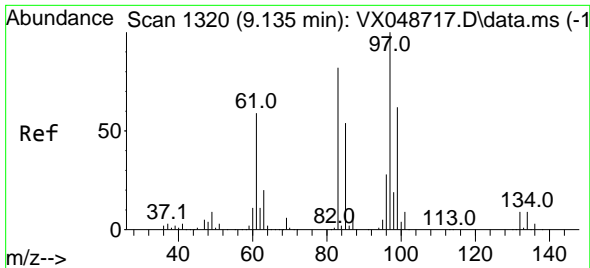


#54  
 cis-1,3-Dichloropropene  
 Concen: 6.122 ug/l  
 RT: 8.531 min Scan# 1221  
 Delta R.T. 0.183 min  
 Lab File: VX048779.D  
 Acq: 09 Dec 2025 13:26

Tgt Ion: 75 Resp: 24742  
 Ion Ratio Lower Upper  
 75 100  
 77 0.0 26.1 39.1#  
 39 37.0 38.2 57.4#





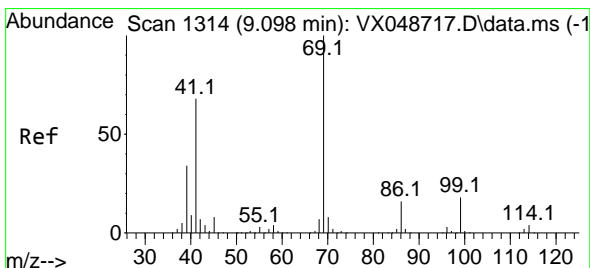
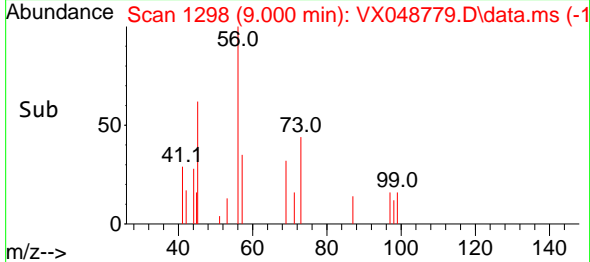
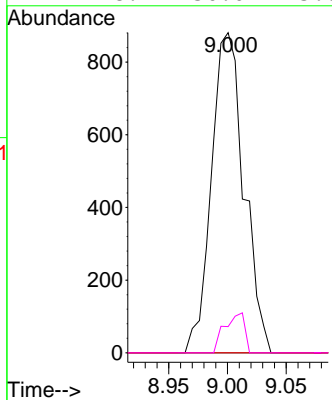
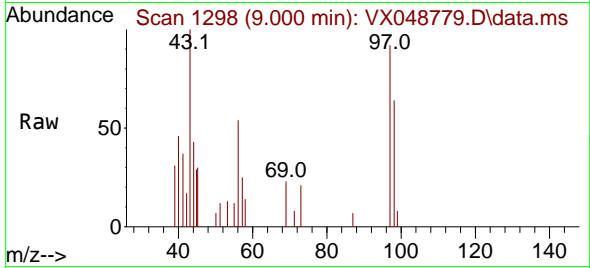


#55  
 1,1,2-Trichloroethane  
 Concen: 0.700 ug/l  
 RT: 9.000 min Scan# 11  
 Delta R.T. -0.134 min  
 Lab File: VX048779.D  
 Acq: 09 Dec 2025 13:26

Instrument :  
 MSVOA\_X  
 ClientSampleId :  
 CHASE-C

Tgt Ion: 97 Resp: 1698

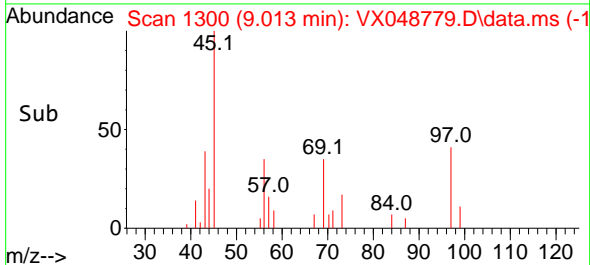
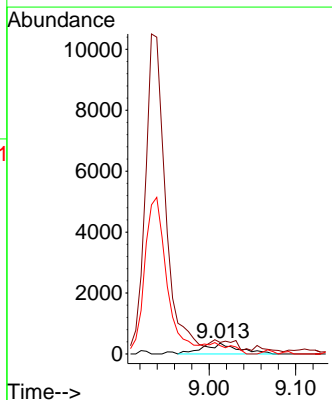
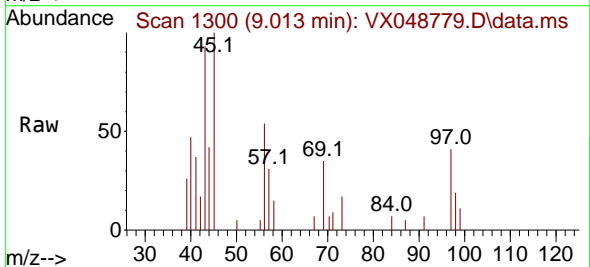
Ion	Ratio	Lower	Upper
97	100		
83	0.0	66.0	99.0#
85	0.0	43.2	64.8#
99	8.2	50.0	75.0#

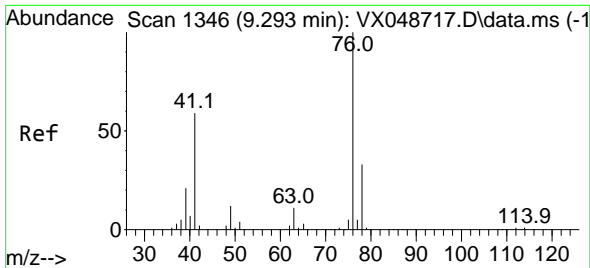


#56  
 Ethyl methacrylate  
 Concen: 0.259 ug/l  
 RT: 9.013 min Scan# 1300  
 Delta R.T. -0.085 min  
 Lab File: VX048779.D  
 Acq: 09 Dec 2025 13:26

Tgt Ion: 69 Resp: 982

Ion	Ratio	Lower	Upper
69	100		
41	67.4	53.4	80.2
39	0.0	27.5	41.3#

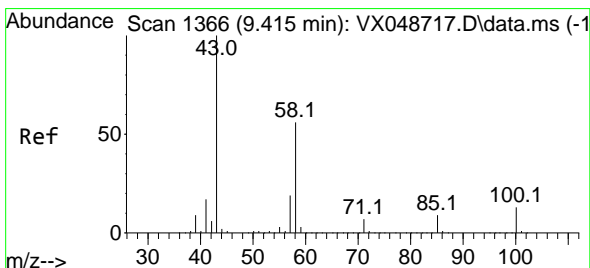
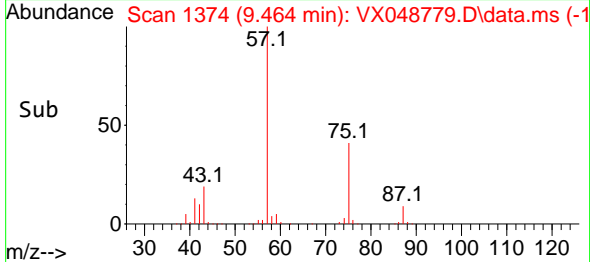
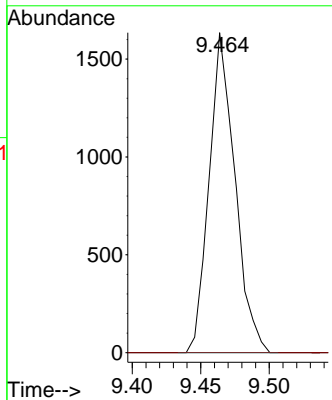
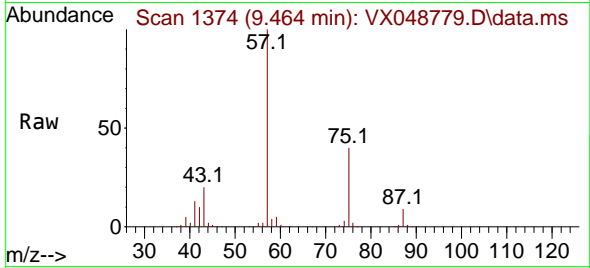




#57  
 1,3-Dichloropropane  
 Concen: 0.531 ug/l  
 RT: 9.464 min Scan# 1374  
 Delta R.T. 0.171 min  
 Lab File: VX048779.D  
 Acq: 09 Dec 2025 13:26

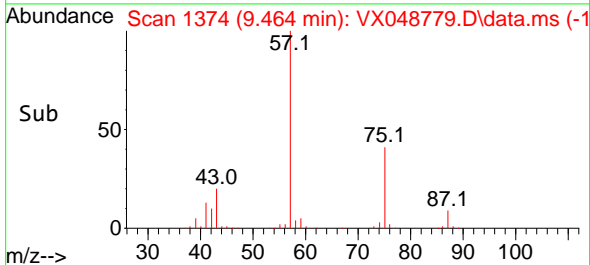
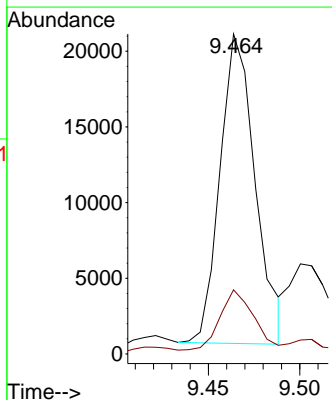
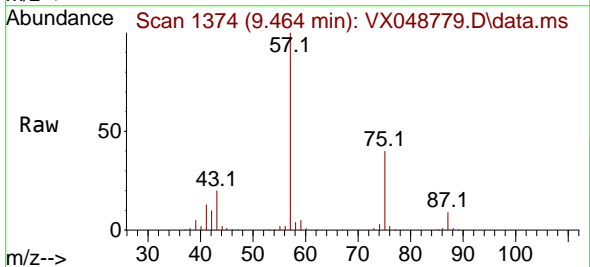
Instrument :  
 MSVOA\_X  
 ClientSampleId :  
 CHASE-C

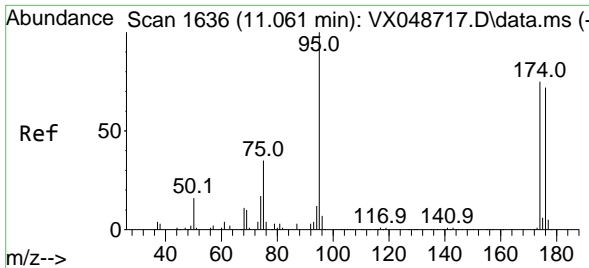
Tgt Ion: 76 Resp: 2144  
 Ion Ratio Lower Upper  
 76 100  
 78 0.0 26.0 39.0#



#59  
 2-Hexanone  
 Concen: 10.320 ug/l  
 RT: 9.464 min Scan# 1374  
 Delta R.T. 0.049 min  
 Lab File: VX048779.D  
 Acq: 09 Dec 2025 13:26

Tgt Ion: 43 Resp: 27451  
 Ion Ratio Lower Upper  
 43 100  
 58 21.5 27.8 83.4#



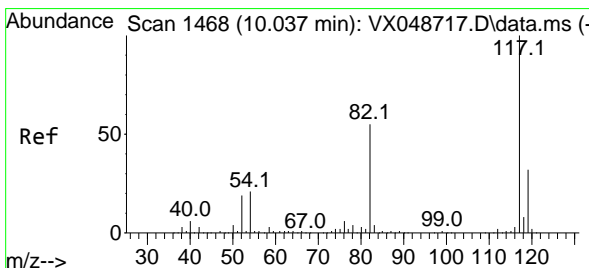
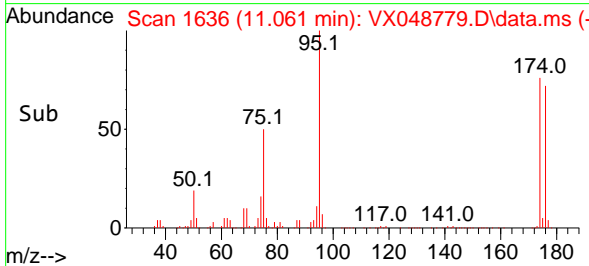
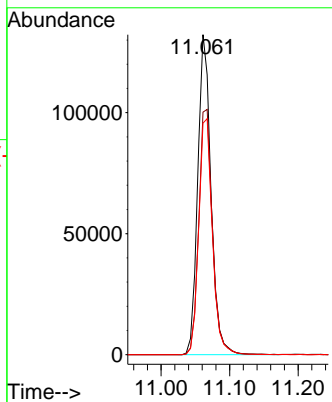
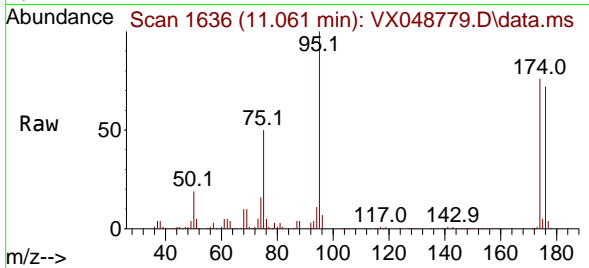


#62  
 4-Bromofluorobenzene  
 Concen: 59.862 ug/l  
 RT: 11.061 min Scan# 11  
 Delta R.T. 0.000 min  
 Lab File: VX048779.D  
 Acq: 09 Dec 2025 13:26

Instrument :  
 MSVOA\_X  
 ClientSampleId :  
 CHASE-C

Tgt Ion: 95 Resp: 178250

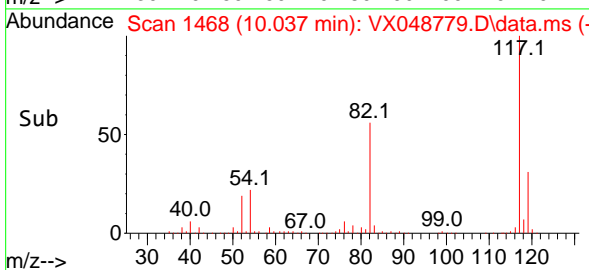
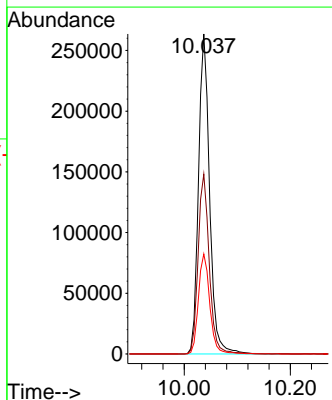
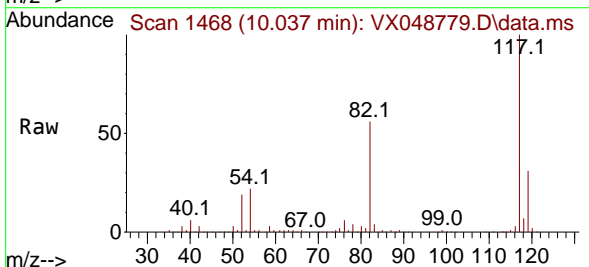
Ion	Ratio	Lower	Upper
95	100		
174	79.7	0.0	157.8
176	76.1	0.0	154.0

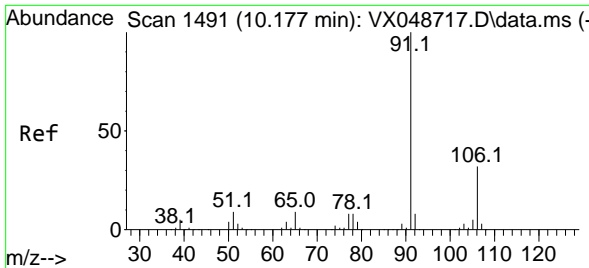


#63  
 Chlorobenzene-d5  
 Concen: 50.000 ug/l  
 RT: 10.037 min Scan# 1468  
 Delta R.T. 0.000 min  
 Lab File: VX048779.D  
 Acq: 09 Dec 2025 13:26

Tgt Ion: 117 Resp: 381992

Ion	Ratio	Lower	Upper
117	100		
82	56.2	44.1	66.1
119	31.2	25.2	37.8

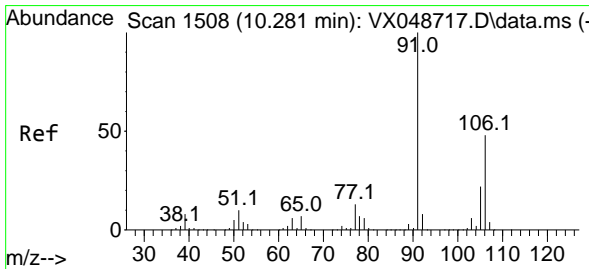
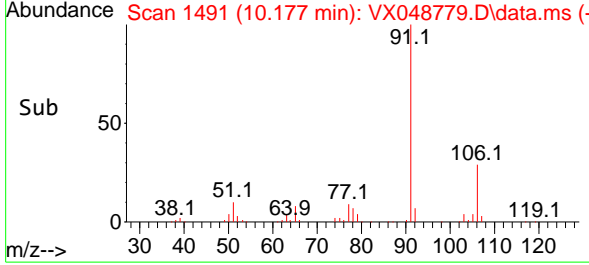
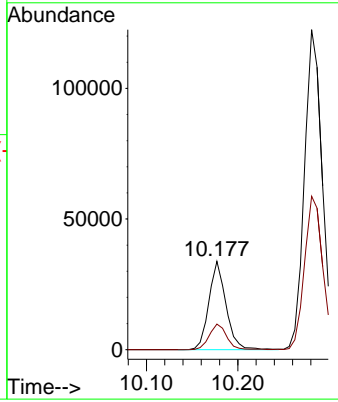
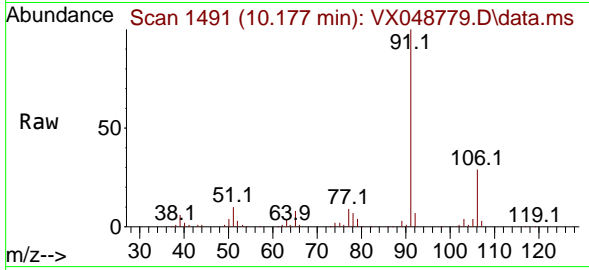




#67  
 Ethyl Benzene  
 Concen: 3.223 ug/l  
 RT: 10.177 min Scan# 1491  
 Delta R.T. 0.000 min  
 Lab File: VX048779.D  
 Acq: 09 Dec 2025 13:26

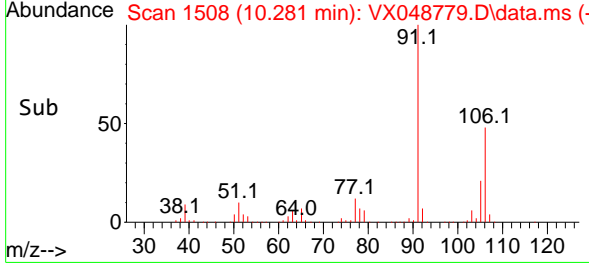
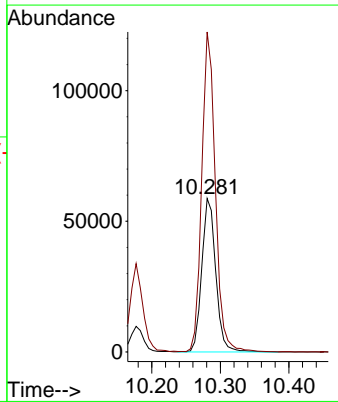
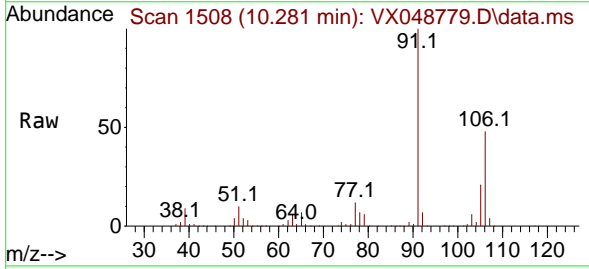
Instrument : MSVOA\_X  
 ClientSampleId : CHASE-C

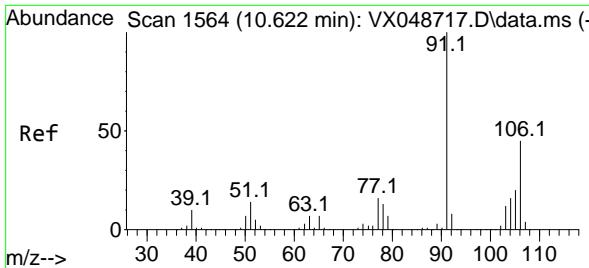
Tgt Ion: 91 Resp: 43974  
 Ion Ratio Lower Upper  
 91 100  
 106 29.0 25.3 37.9



#68  
 m/p-Xylenes  
 Concen: 15.720 ug/l  
 RT: 10.281 min Scan# 1508  
 Delta R.T. 0.000 min  
 Lab File: VX048779.D  
 Acq: 09 Dec 2025 13:26

Tgt Ion: 106 Resp: 83551  
 Ion Ratio Lower Upper  
 106 100  
 91 202.6 164.2 246.4

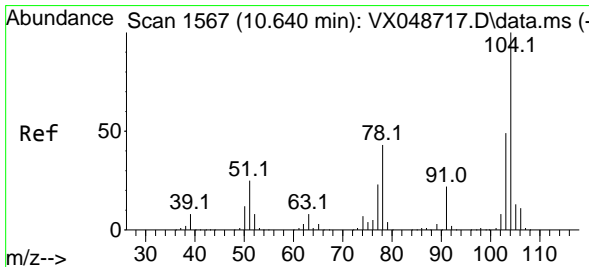
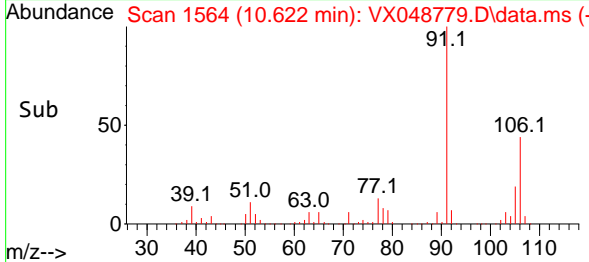
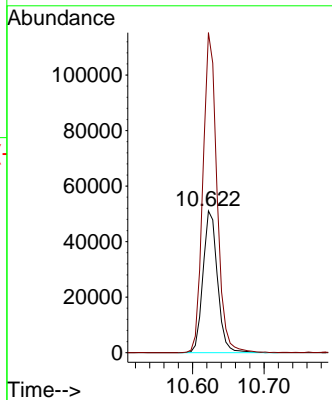
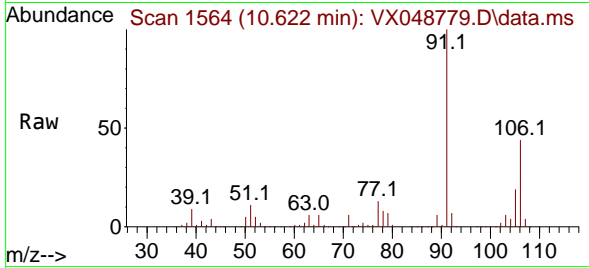




#69  
 o-Xylene  
 Concen: 14.445 ug/l  
 RT: 10.622 min Scan# 1564  
 Delta R.T. 0.000 min  
 Lab File: VX048779.D  
 Acq: 09 Dec 2025 13:26

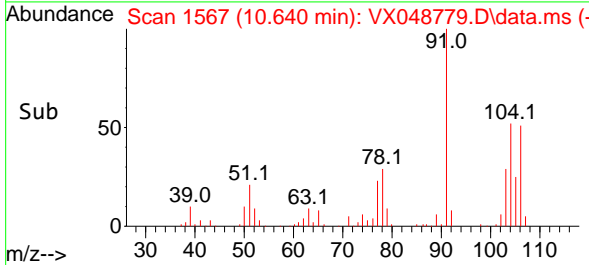
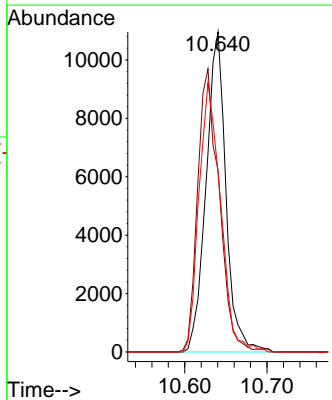
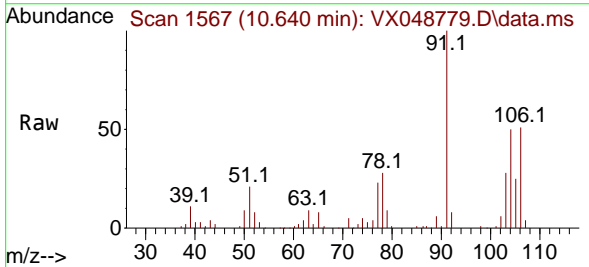
Instrument :  
 MSVOA\_X  
 ClientSampleId :  
 CHASE-C

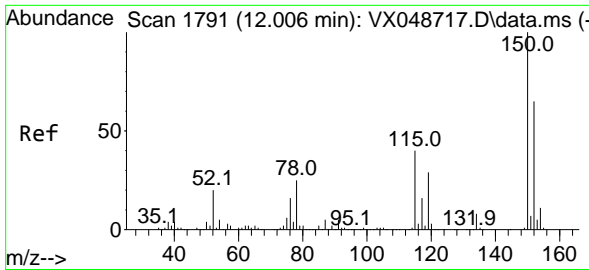
Tgt Ion:106 Resp: 71940  
 Ion Ratio Lower Upper  
 106 100  
 91 219.1 108.1 324.3



#70  
 Styrene  
 Concen: 2.151 ug/l  
 RT: 10.640 min Scan# 1567  
 Delta R.T. 0.000 min  
 Lab File: VX048779.D  
 Acq: 09 Dec 2025 13:26

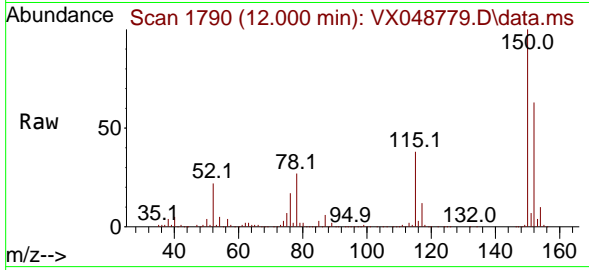
Tgt Ion:104 Resp: 18392  
 Ion Ratio Lower Upper  
 104 100  
 78 95.7 40.6 60.8#  
 103 91.5 43.4 65.2#



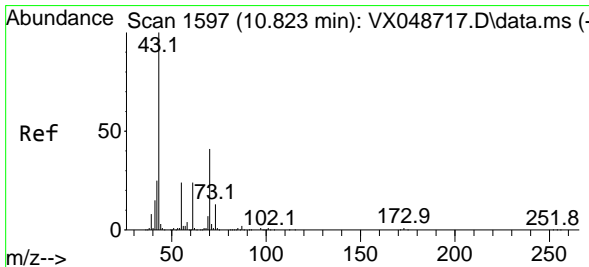
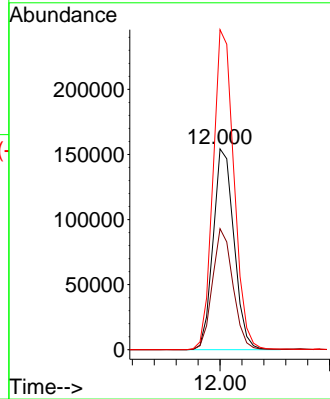
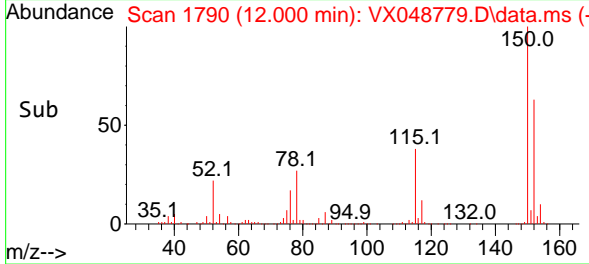


#72  
 1,4-Dichlorobenzene-d4  
 Concen: 50.000 ug/l  
 RT: 12.000 min Scan# 11  
 Delta R.T. -0.006 min  
 Lab File: VX048779.D  
 Acq: 09 Dec 2025 13:26

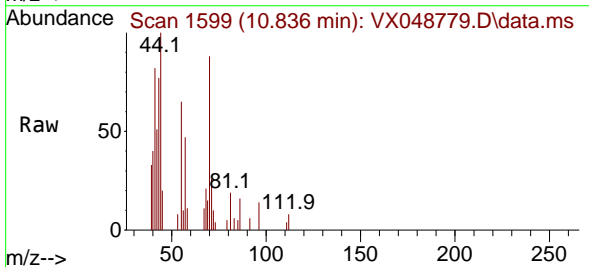
Instrument :  
 MSVOA\_X  
 ClientSampleId :  
 CHASE-C



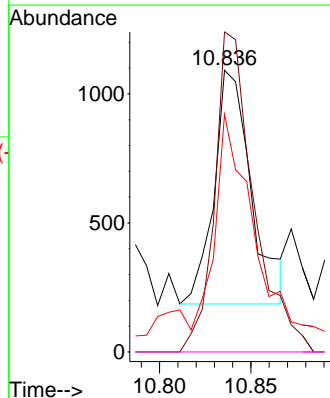
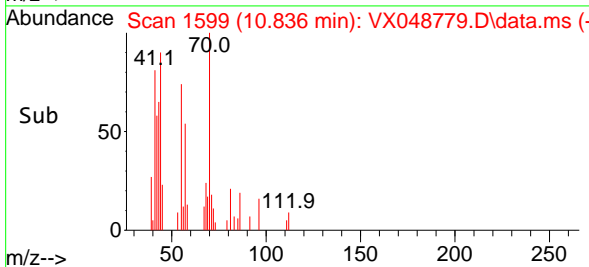
Tgt Ion:152 Resp: 203775  
 Ion Ratio Lower Upper  
 152 100  
 115 59.3 42.1 126.4  
 150 160.1 0.0 347.8

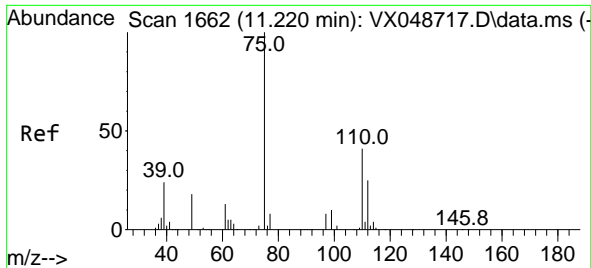


#74  
 N-amy1 acetate  
 Concen: 0.214 ug/l  
 RT: 10.836 min Scan# 1599  
 Delta R.T. 0.012 min  
 Lab File: VX048779.D  
 Acq: 09 Dec 2025 13:26



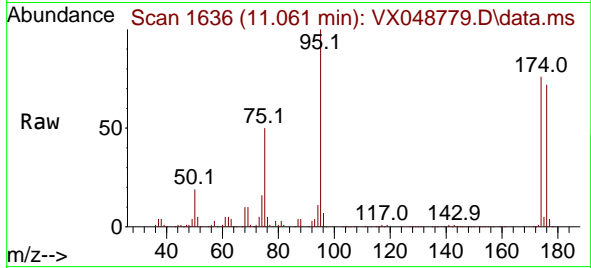
Tgt Ion: 43 Resp: 1278  
 Ion Ratio Lower Upper  
 43 100  
 70 144.4 33.9 50.9#  
 55 118.2 19.1 28.7#  
 61 0.0 19.0 28.6#



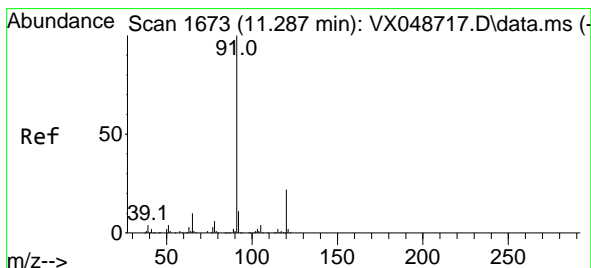
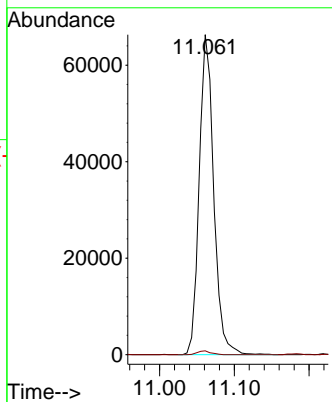
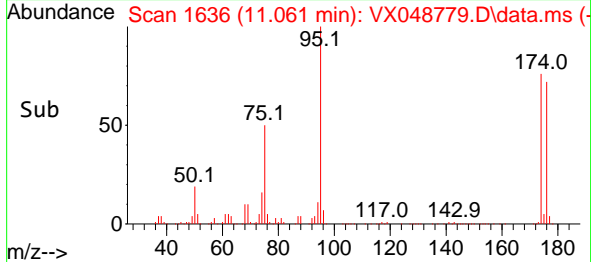


#76  
 1,2,3-Trichloropropane  
 Concen: 23.516 ug/l  
 RT: 11.061 min Scan# 1636  
 Delta R.T. -0.158 min  
 Lab File: VX048779.D  
 Acq: 09 Dec 2025 13:26

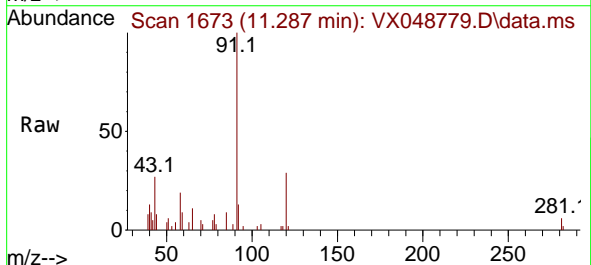
Instrument :  
 MSVOA\_X  
 ClientSampleId :  
 CHASE-C



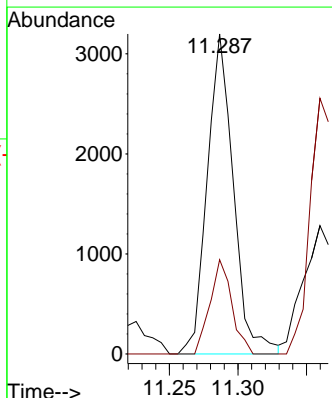
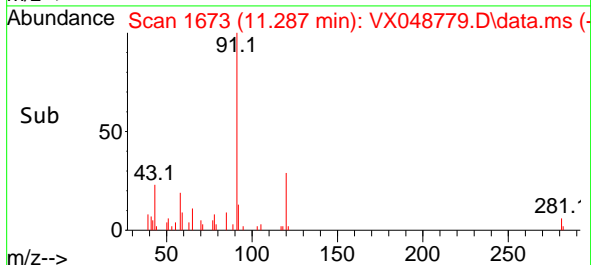
Tgt Ion: 75 Resp: 89253  
 Ion Ratio Lower Upper  
 75 100  
 77 1.1 24.3 73.0#

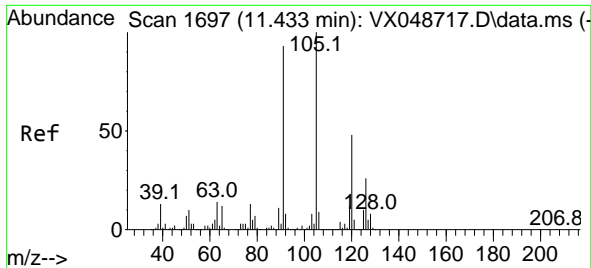


#78  
 n-propylbenzene  
 Concen: 0.268 ug/l  
 RT: 11.287 min Scan# 1673  
 Delta R.T. 0.000 min  
 Lab File: VX048779.D  
 Acq: 09 Dec 2025 13:26



Tgt Ion: 91 Resp: 4257  
 Ion Ratio Lower Upper  
 91 100  
 120 24.6 11.4 34.2

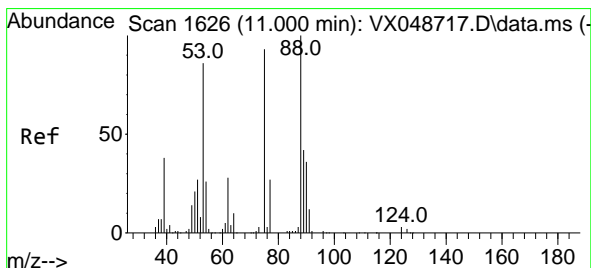
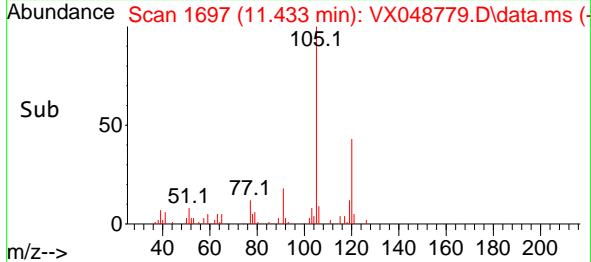
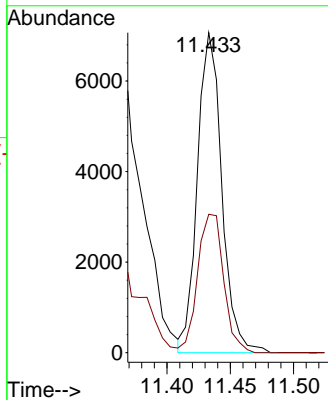
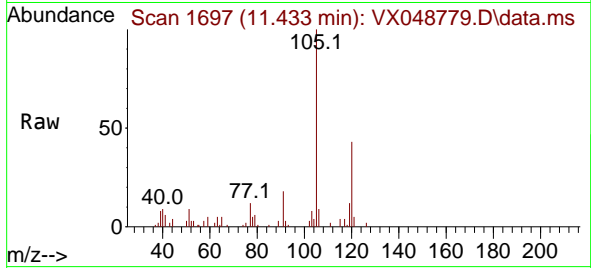




#80  
 1,3,5-Trimethylbenzene  
 Concen: 0.842 ug/l  
 RT: 11.433 min Scan# 1  
 Delta R.T. 0.000 min  
 Lab File: VX048779.D  
 Acq: 09 Dec 2025 13:26

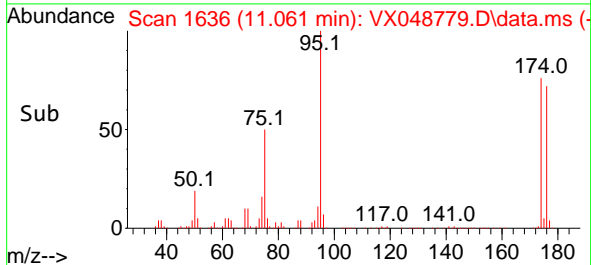
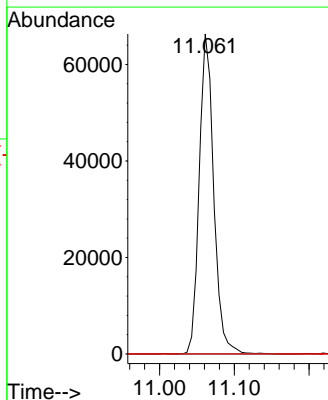
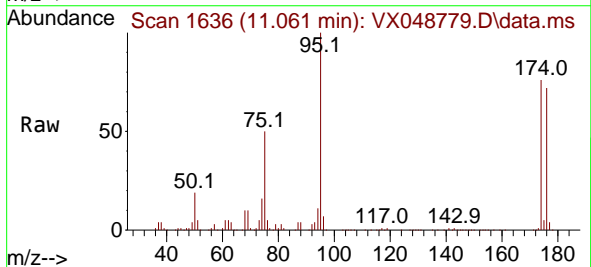
Instrument :  
 MSVOA\_X  
 ClientSampleId :  
 CHASE-C

Tgt Ion:105 Resp: 9502  
 Ion Ratio Lower Upper  
 105 100  
 120 46.1 24.4 73.2

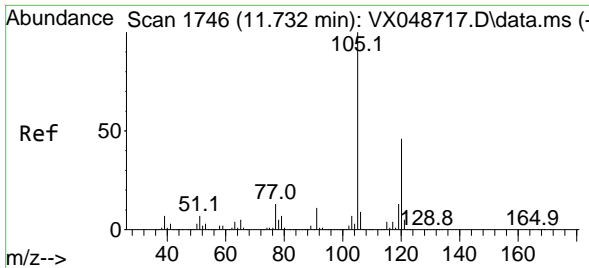


#81  
 trans-1,4-Dichloro-2-butene  
 Concen: 55.860 ug/l  
 RT: 11.061 min Scan# 1636  
 Delta R.T. 0.061 min  
 Lab File: VX048779.D  
 Acq: 09 Dec 2025 13:26

Tgt Ion: 75 Resp: 89253  
 Ion Ratio Lower Upper  
 75 100  
 53 0.0 79.9 119.9#  
 89 0.0 67.1 100.7#



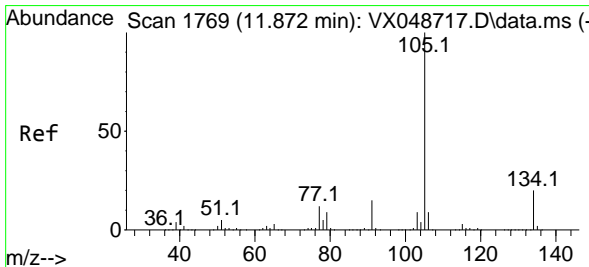
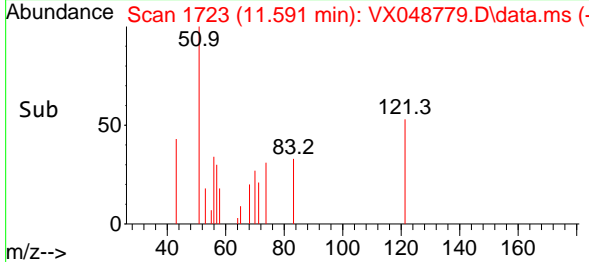
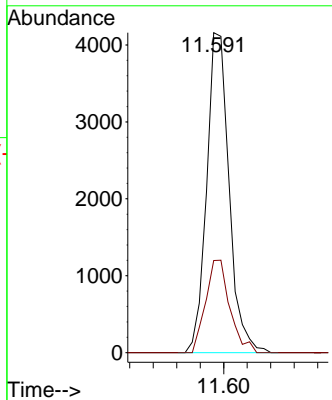
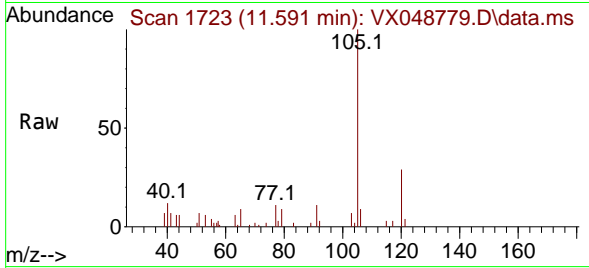




#84  
 1,2,4-Trimethylbenzene  
 Concen: 0.484 ug/l  
 RT: 11.591 min Scan# 1723  
 Delta R.T. -0.140 min  
 Lab File: VX048779.D  
 Acq: 09 Dec 2025 13:26

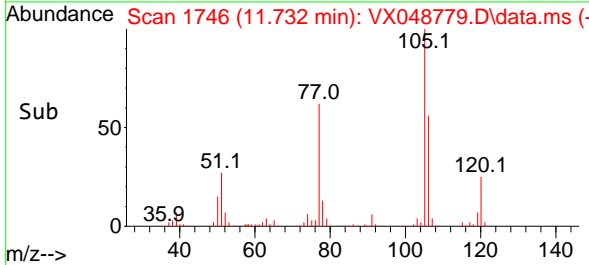
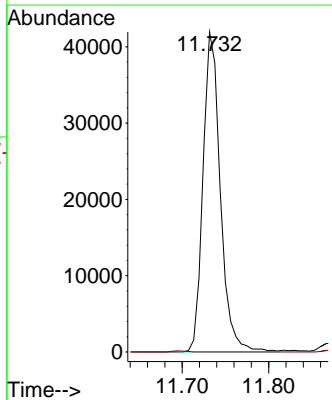
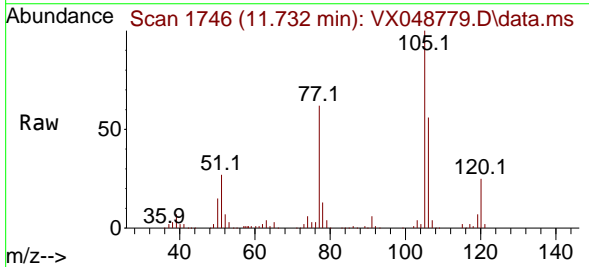
Instrument :  
 MSVOA\_X  
 ClientSampleId :  
 CHASE-C

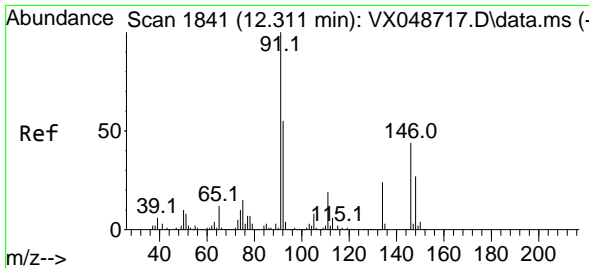
Tgt Ion:105 Resp: 5515  
 Ion Ratio Lower Upper  
 105 100  
 120 31.1 22.3 66.8



#85  
 sec-Butylbenzene  
 Concen: 4.099 ug/l  
 RT: 11.732 min Scan# 1746  
 Delta R.T. -0.140 min  
 Lab File: VX048779.D  
 Acq: 09 Dec 2025 13:26

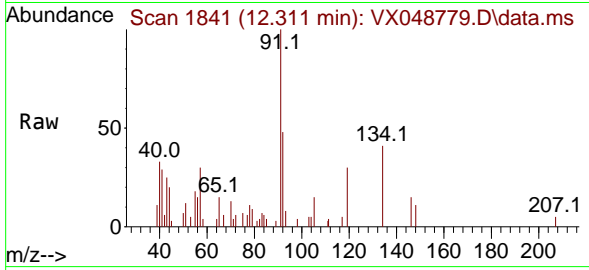
Tgt Ion:105 Resp: 58268  
 Ion Ratio Lower Upper  
 105 100  
 134 0.0 9.8 29.5#





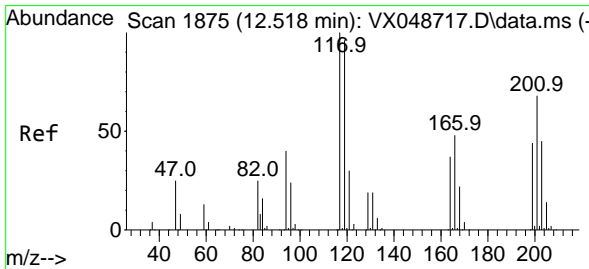
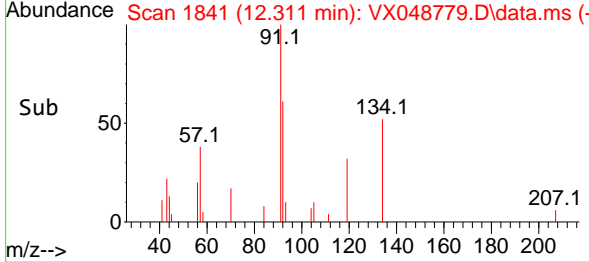
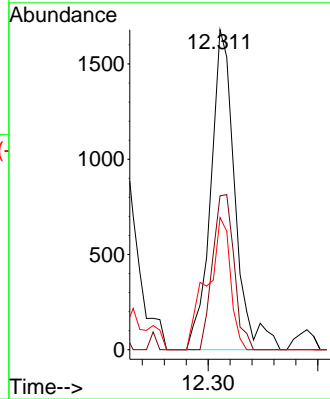
#89  
 n-Butylbenzene  
 Concen: 0.227 ug/l  
 RT: 12.311 min Scan# 1841  
 Delta R.T. 0.000 min  
 Lab File: VX048779.D  
 Acq: 09 Dec 2025 13:26

Instrument : MSVOA\_X  
 ClientSampleId : CHASE-C



Tgt Ion: 91 Resp: 2580

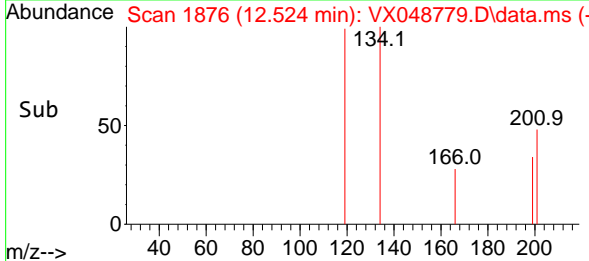
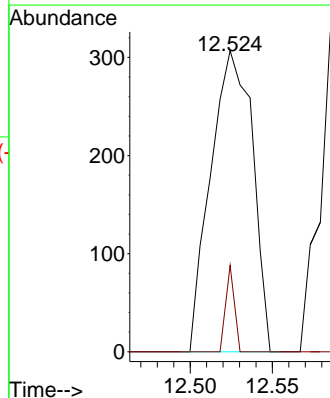
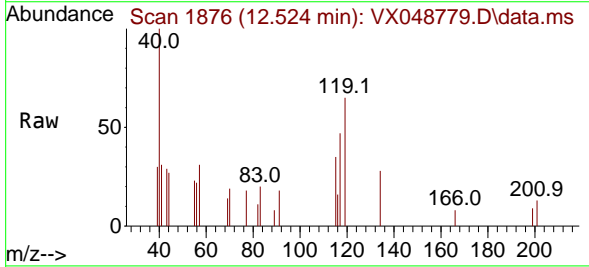
Ion	Ratio	Lower	Upper
91	100		
92	43.0	27.1	81.3
134	39.8	12.9	38.6#

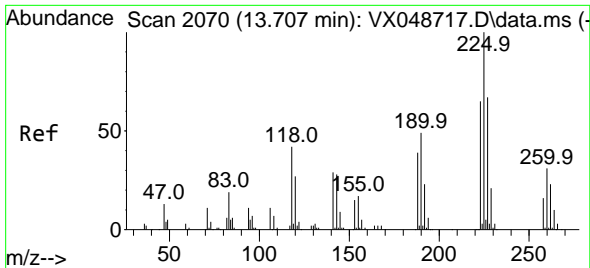


#90  
 Hexachloroethane  
 Concen: 0.219 ug/l  
 RT: 12.524 min Scan# 1876  
 Delta R.T. 0.006 min  
 Lab File: VX048779.D  
 Acq: 09 Dec 2025 13:26

Tgt Ion: 117 Resp: 542

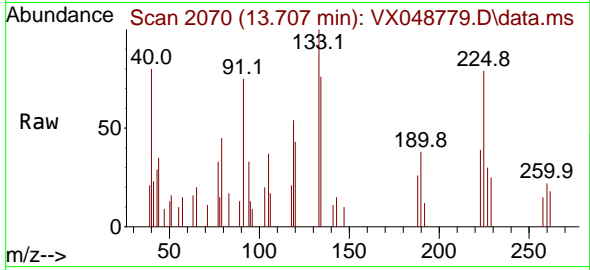
Ion	Ratio	Lower	Upper
117	100		
201	5.9	36.4	109.1#





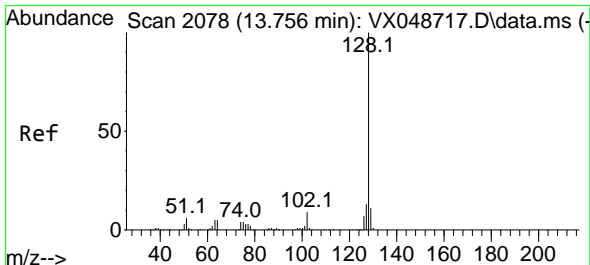
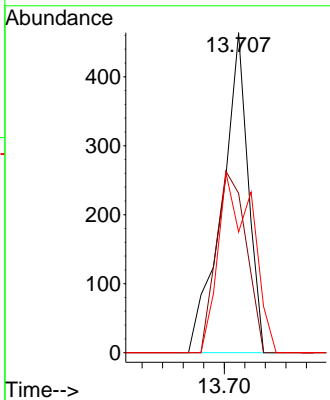
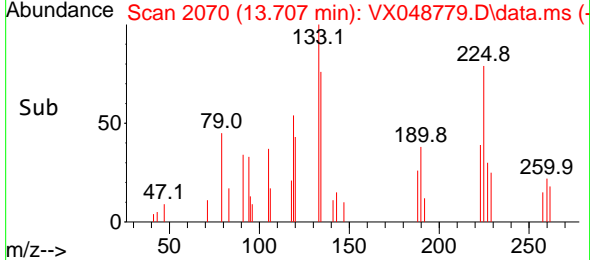
#94  
 Hexachlorobutadiene  
 Concen: 0.229 ug/l  
 RT: 13.707 min Scan# 2070  
 Delta R.T. 0.000 min  
 Lab File: VX048779.D  
 Acq: 09 Dec 2025 13:26

Instrument : MSVOA\_X  
 ClientSampleId : CHASE-C

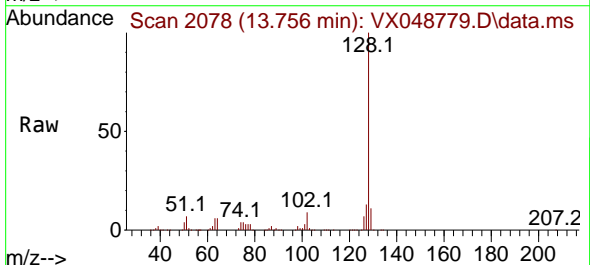


Tgt Ion: 225 Resp: 409

Ion	Ratio	Lower	Upper
225	100		
223	65.5	33.0	98.9
227	73.6	32.9	98.7



#95  
 Naphthalene  
 Concen: 30.772 ug/l  
 RT: 13.756 min Scan# 2078  
 Delta R.T. 0.000 min  
 Lab File: VX048779.D  
 Acq: 09 Dec 2025 13:26



Tgt Ion: 128 Resp: 353978

Ion	Ratio	Lower	Upper
128	100		
127	12.7	10.2	15.2
129	10.7	8.6	13.0

