

Data Path : Z:\voasrv\HPCHEM1\MSVOA\_X\Data\VX120925\  
 Data File : VX048781.D  
 Acq On : 09 Dec 2025 14:07  
 Operator : JC/MD  
 Sample : Q3803-05  
 Misc : 5.0mL/MSVOA\_X/WATER  
 ALS Vial : 15 Sample Multiplier: 1

Instrument :  
 MSVOA\_X  
 ClientSampleId :  
 CHASE-E

Quant Time: Dec 10 00:22:06 2025  
 Quant Method : Z:\voasrv\HPCHEM1\MSVOA\_X\Method\82X120425W.M  
 Quant Title : SW846 8260  
 QLast Update : Fri Dec 05 03:27:34 2025  
 Response via : Initial Calibration

Compound	R.T.	QIon	Response	Conc	Units	Dev(Min)
Internal Standards						
1) Pentafluorobenzene	5.543	168	154092	50.000	ug/l	0.00
34) 1,4-Difluorobenzene	6.745	114	319884	50.000	ug/l	0.00
63) Chlorobenzene-d5	10.037	117	331882	50.000	ug/l	0.00
72) 1,4-Dichlorobenzene-d4	12.006	152	182415	50.000	ug/l	0.00
System Monitoring Compounds						
33) 1,2-Dichloroethane-d4	5.940	65	108937	52.672	ug/l	0.00
Spiked Amount	50.000	Range	78 - 117	Recovery	=	105.340%
35) Dibromofluoromethane	5.373	113	99549	45.198	ug/l	0.00
Spiked Amount	50.000	Range	75 - 124	Recovery	=	90.400%
50) Toluene-d8	8.634	98	356333	46.154	ug/l	0.00
Spiked Amount	50.000	Range	92 - 112	Recovery	=	92.300%
62) 4-Bromofluorobenzene	11.061	95	155819	58.528	ug/l	0.00
Spiked Amount	50.000	Range	83 - 123	Recovery	=	117.060%
Target Compounds						
						Qvalue
10) Methyl Iodide	2.471	142	595	0.238	ug/l #	83
11) Tert butyl alcohol	2.934	59	4950	14.824	ug/l	99
13) Acrolein	2.245	56	701	42.002	ug/l #	15
14) Allyl chloride	2.636	41	729	0.243	ug/l #	27
16) Acetone	2.373	43	87747	110.827	ug/l	99
18) Methyl Acetate	2.703	43	3719	1.669	ug/l	100
20) Methylene Chloride	2.794	84	137957	69.711	ug/l	99
25) 2-Butanone	4.550	43	12190	10.432	ug/l	90
29) Tetrahydrofuran	4.995	42	194	0.217	ug/l #	30
31) Cyclohexane	5.464	56	1428	0.511	ug/l #	92
36) 1,1-Dichloropropene	5.531	75	12532	4.154	ug/l #	49
37) Ethyl Acetate	4.550	43	12190	3.382	ug/l #	71
38) Carbon Tetrachloride	5.537	117	15588	4.562	ug/l #	14
39) Methylcyclohexane	7.379	83	1231	0.345	ug/l #	79
40) Benzene	6.025	78	724968	81.067	ug/l	98
42) 1,2-Dichloroethane	6.025	62	5976	1.888	ug/l #	73
43) Isopropyl Acetate	6.330	43	15406	2.823	ug/l	96
48) Methyl methacrylate	7.781	41	59623	21.715	ug/l #	41
49) 1,4-Dioxane	7.781	88	117	3.098	ug/l #	1
51) 4-Methyl-2-Pentanone	8.531	43	66487	19.625	ug/l #	35
52) Toluene	8.701	92	325876	60.430	ug/l	99
54) cis-1,3-Dichloropropene	8.531	75	23403	6.477	ug/l #	59
55) 1,1,2-Trichloroethane	9.000	97	2088	0.962	ug/l #	20
57) 1,3-Dichloropropane	9.470	76	1996	0.553	ug/l #	46
59) 2-Hexanone	9.464	43	26395	11.099	ug/l #	54
60) Dibromochloromethane	9.250	129	708	0.264	ug/l #	11
64) Tetrachloroethene	9.262	164	744	0.308	ug/l #	83
67) Ethyl Benzene	10.177	91	37558	3.168	ug/l	92
68) m/p-Xylenes	10.280	106	68821	14.904	ug/l	99
69) o-Xylene	10.622	106	45531	10.523	ug/l	100
70) Styrene	10.640	104	16679	2.245	ug/l #	61
74) N-amyl acetate	10.841	43	2762	0.517	ug/l #	16
76) 1,2,3-Trichloropropane	11.061	75	78135	22.998	ug/l #	30
78) n-propylbenzene	11.286	91	3551	0.249	ug/l	98
79) 2-Chlorotoluene	11.360	91	2164	0.249	ug/l #	41
80) 1,3,5-Trimethylbenzene	11.433	105	8808	0.872	ug/l	96

Data Path : Z:\voasrv\HPCHEM1\MSVOA\_X\Data\VX120925\  
Data File : VX048781.D  
Acq On : 09 Dec 2025 14:07  
Operator : JC/MD  
Sample : Q3803-05  
Misc : 5.0mL/MSVOA\_X/WATER  
ALS Vial : 15 Sample Multiplier: 1

Instrument :  
MSVOA\_X  
ClientSampleId :  
CHASE-E

Quant Time: Dec 10 00:22:06 2025  
Quant Method : Z:\voasrv\HPCHEM1\MSVOA\_X\Method\82X120425W.M  
Quant Title : SW846 8260  
QLast Update : Fri Dec 05 03:27:34 2025  
Response via : Initial Calibration

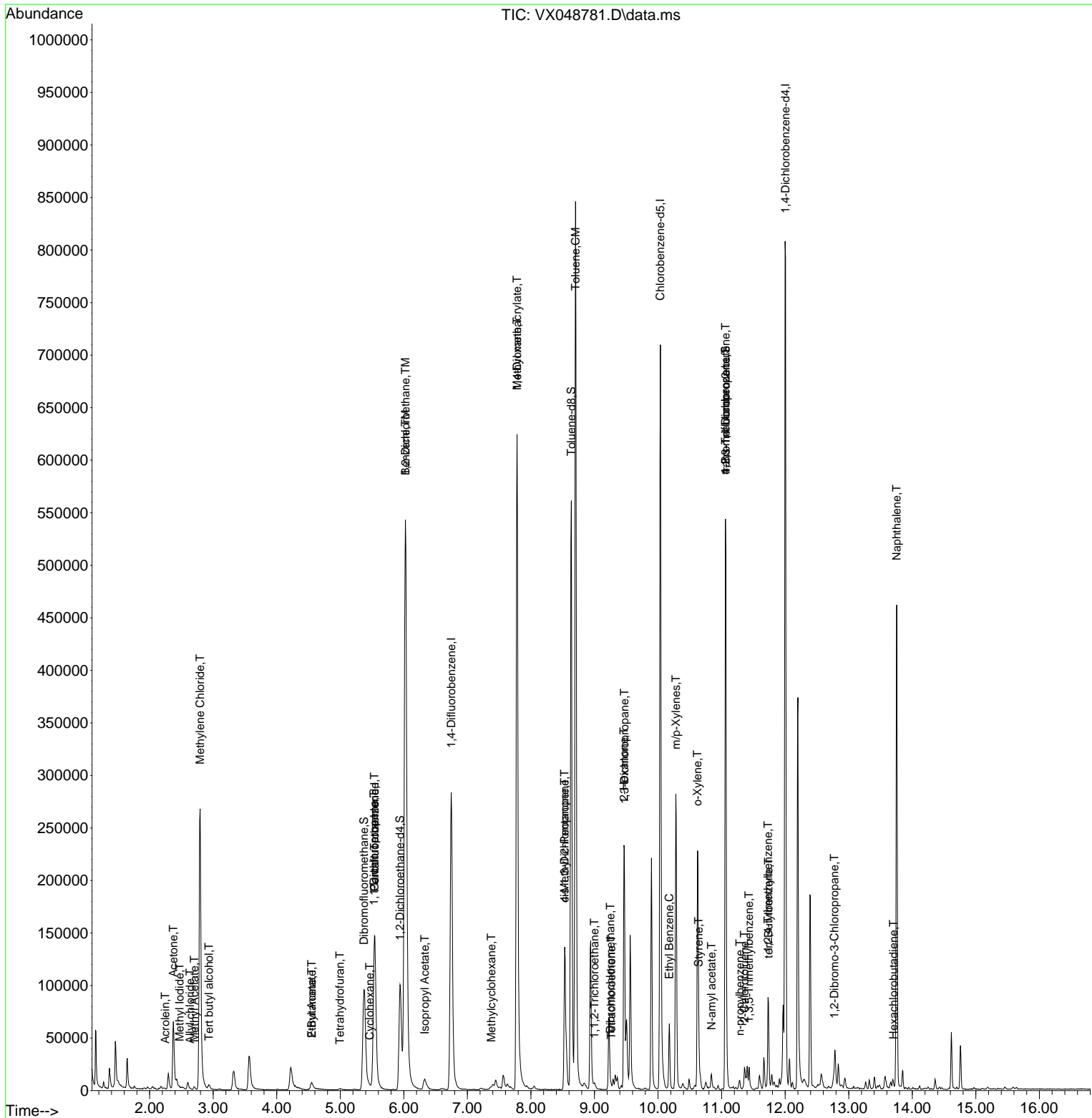
Compound	R.T.	QIon	Response	Conc	Units	Dev(Min)
81) trans-1,4-Dichloro-2-b...	11.061	75	78135	54.628	ug/l #	3
83) tert-Butylbenzene	11.738	119	3494	0.333	ug/l #	72
84) 1,2,4-Trimethylbenzene	11.731	105	35785	3.511	ug/l	79
92) 1,2-Dibromo-3-Chloropr...	12.774	75	341	0.338	ug/l #	1
94) Hexachlorobutadiene	13.707	225	362	0.226	ug/l	80
95) Naphthalene	13.755	128	273039	26.757	ug/l	99

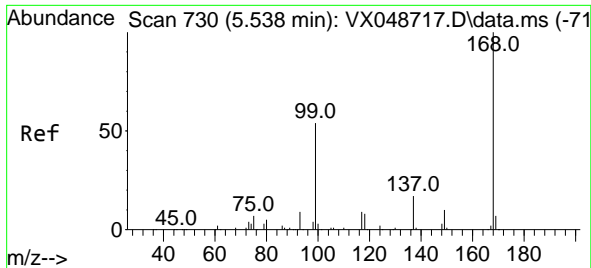
(#) = qualifier out of range (m) = manual integration (+) = signals summed

Data Path : Z:\voasrv\HPCHEM1\MSVOA\_X\Data\VX120925\  
 Data File : VX048781.D  
 Acq On : 09 Dec 2025 14:07  
 Operator : JC/MD  
 Sample : Q3803-05  
 Misc : 5.0mL/MSVOA\_X/WATER  
 ALS Vial : 15 Sample Multiplier: 1

Instrument :  
 MSVOA\_X  
 ClientSampleId :  
 CHASE-E

Quant Time: Dec 10 00:22:06 2025  
 Quant Method : Z:\voasrv\HPCHEM1\MSVOA\_X\Method\82X120425W.M  
 Quant Title : SW846 8260  
 QLast Update : Fri Dec 05 03:27:34 2025  
 Response via : Initial Calibration

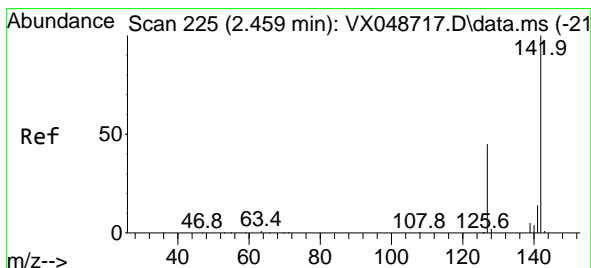
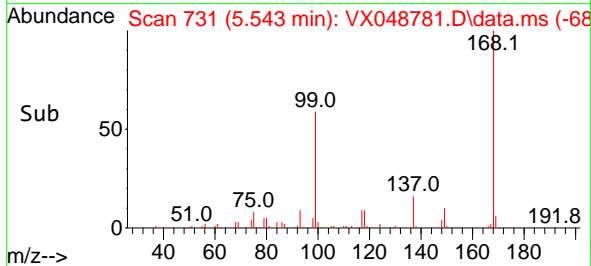
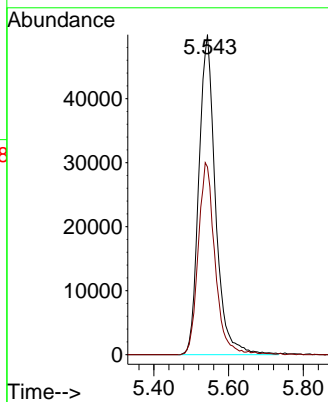
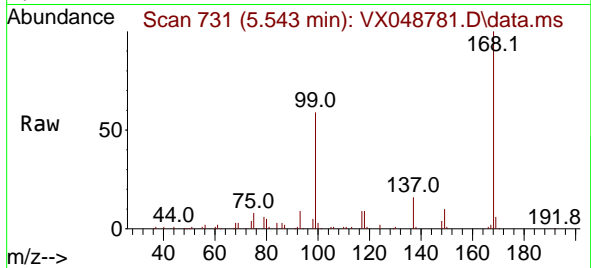




#1  
 Pentafluorobenzene  
 Concen: 50.000 ug/l  
 RT: 5.543 min Scan# 71  
 Delta R.T. 0.005 min  
 Lab File: VX048781.D  
 Acq: 09 Dec 2025 14:07

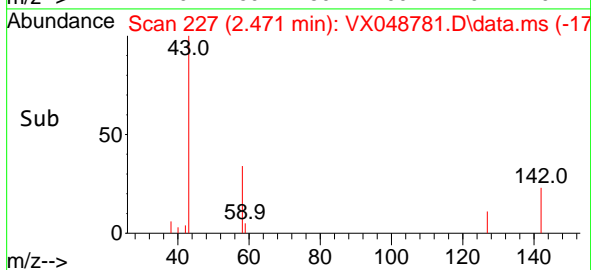
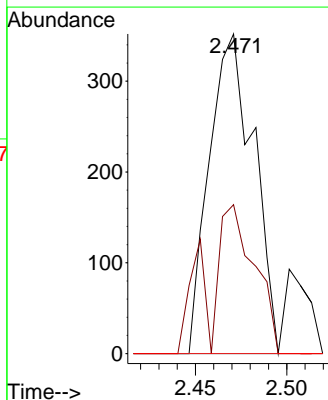
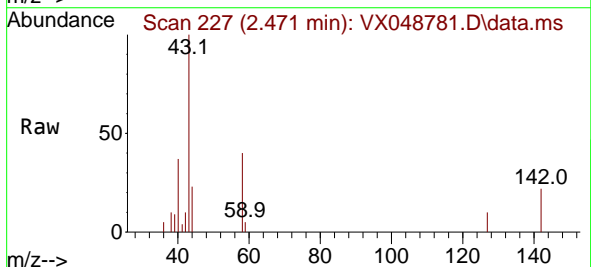
Instrument :  
 MSVOA\_X  
 ClientSampleId :  
 CHASE-E

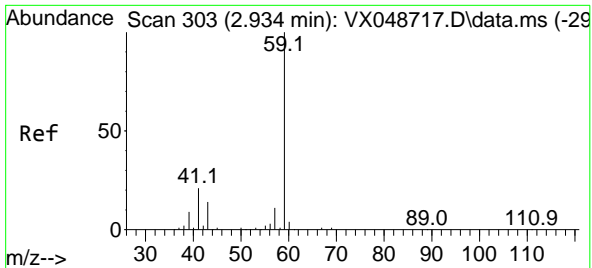
Tgt Ion:168 Resp: 154092  
 Ion Ratio Lower Upper  
 168 100  
 99 58.6 44.2 66.4



#10  
 Methyl Iodide  
 Concen: 0.238 ug/l  
 RT: 2.471 min Scan# 227  
 Delta R.T. 0.012 min  
 Lab File: VX048781.D  
 Acq: 09 Dec 2025 14:07

Tgt Ion:142 Resp: 595  
 Ion Ratio Lower Upper  
 142 100  
 127 36.8 35.8 53.6  
 141 0.0 11.1 16.7#

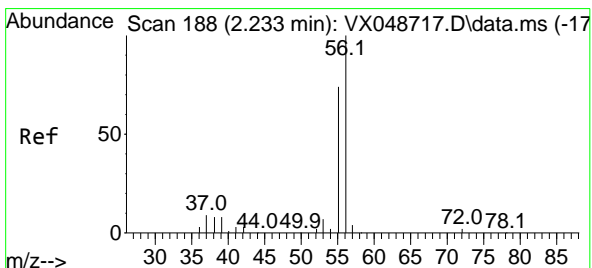
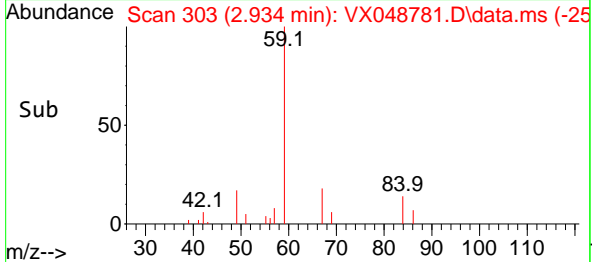
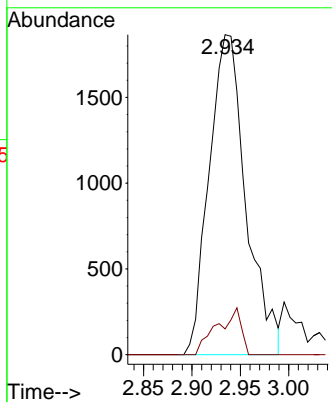
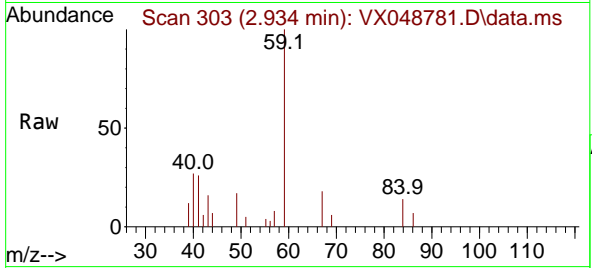




#11  
 Tert butyl alcohol  
 Concen: 14.824 ug/l  
 RT: 2.934 min Scan# 30  
 Delta R.T. -0.000 min  
 Lab File: VX048781.D  
 Acq: 09 Dec 2025 14:07

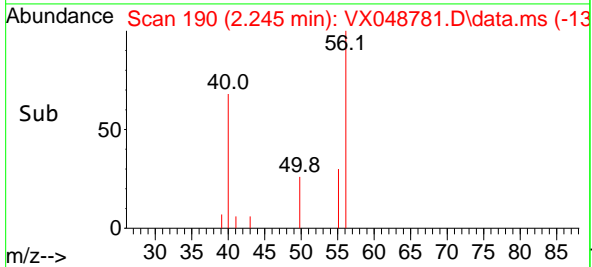
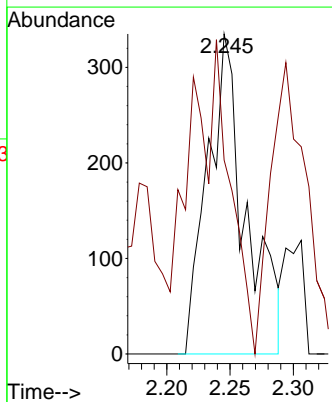
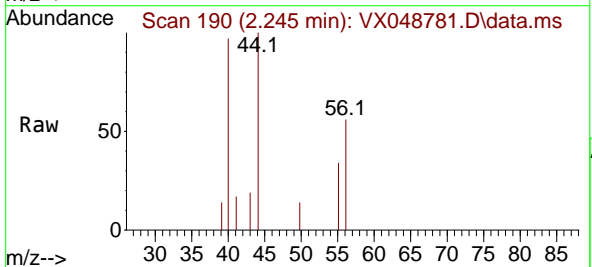
Instrument :  
 MSVOA\_X  
 ClientSampleId :  
 CHASE-E

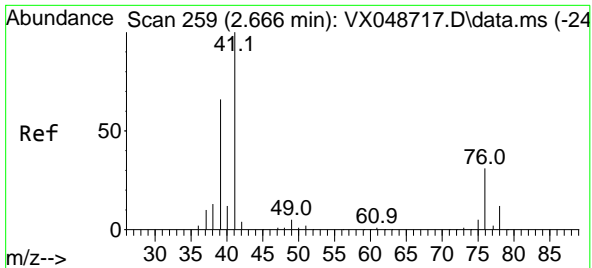
Tgt Ion: 59 Resp: 4950  
 Ion Ratio Lower Upper  
 59 100  
 57 9.6 8.1 12.1



#13  
 Acrolein  
 Concen: 42.002 ug/l  
 RT: 2.245 min Scan# 190  
 Delta R.T. 0.012 min  
 Lab File: VX048781.D  
 Acq: 09 Dec 2025 14:07

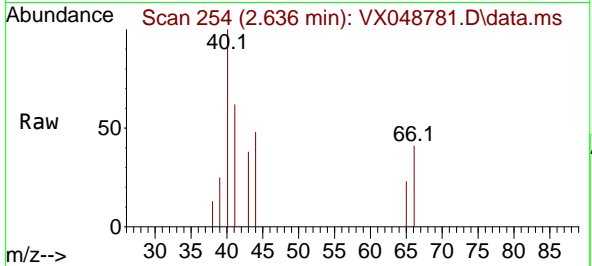
Tgt Ion: 56 Resp: 701  
 Ion Ratio Lower Upper  
 56 100  
 55 0.0 55.8 83.6#





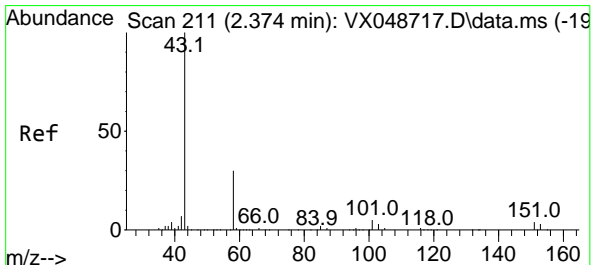
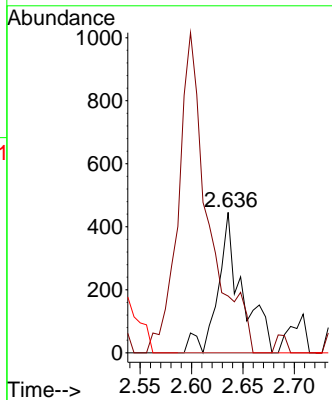
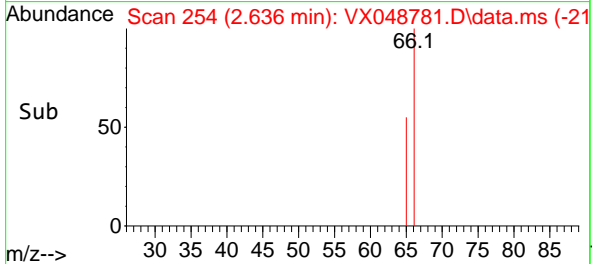
#14  
 Allyl chloride  
 Concen: 0.243 ug/l  
 RT: 2.636 min Scan# 211  
 Delta R.T. -0.031 min  
 Lab File: VX048781.D  
 Acq: 09 Dec 2025 14:07

Instrument : MSVOA\_X  
 ClientSampleId : CHASE-E

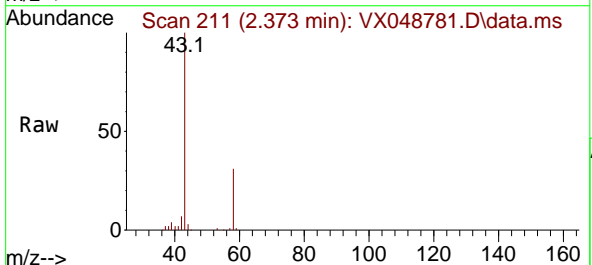


Tgt Ion: 41 Resp: 729

Ion	Ratio	Lower	Upper
41	100		
39	0.0	49.8	74.6#
76	0.0	27.3	40.9#

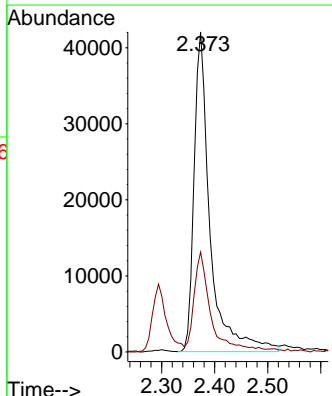
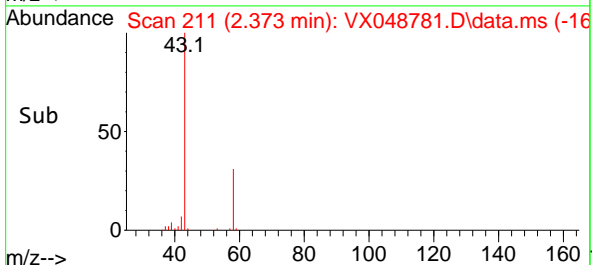


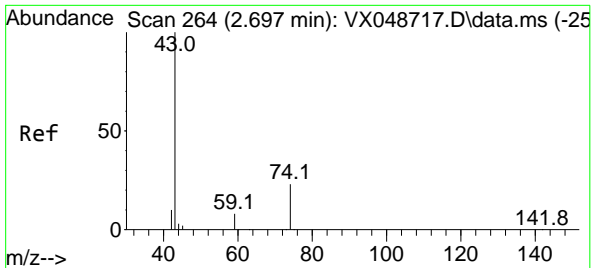
#16  
 Acetone  
 Concen: 110.827 ug/l  
 RT: 2.373 min Scan# 211  
 Delta R.T. -0.000 min  
 Lab File: VX048781.D  
 Acq: 09 Dec 2025 14:07



Tgt Ion: 43 Resp: 87747

Ion	Ratio	Lower	Upper
43	100		
58	30.6	25.0	37.4



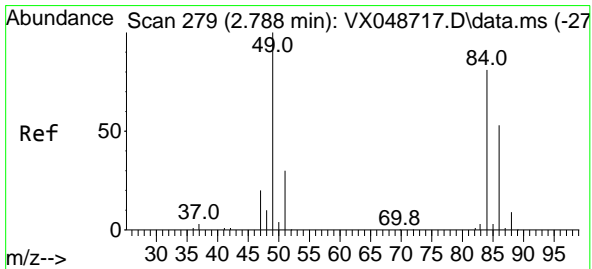
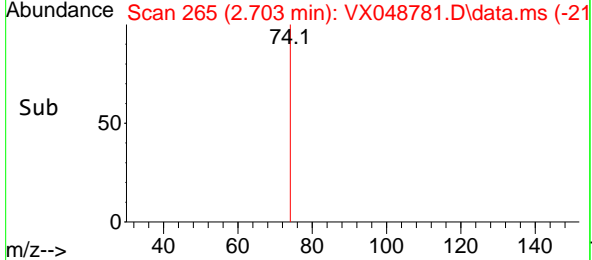
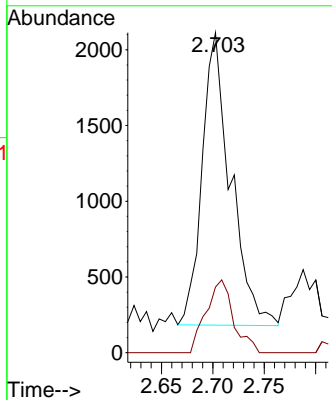
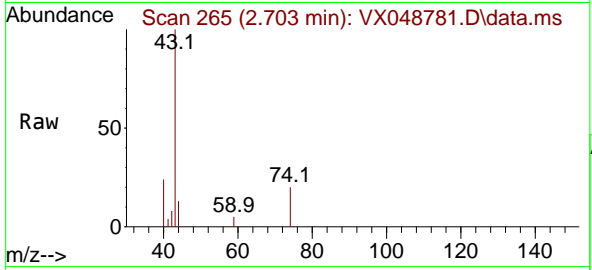


#18  
 Methyl Acetate  
 Concen: 1.669 ug/l  
 RT: 2.703 min Scan# 20  
 Delta R.T. 0.006 min  
 Lab File: VX048781.D  
 Acq: 09 Dec 2025 14:07

Instrument : MSVOA\_X  
 ClientSampleId : CHASE-E

Tgt Ion: 43 Resp: 3719

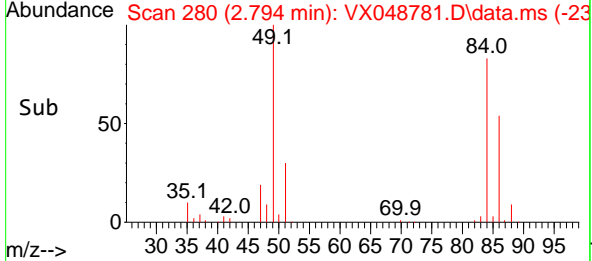
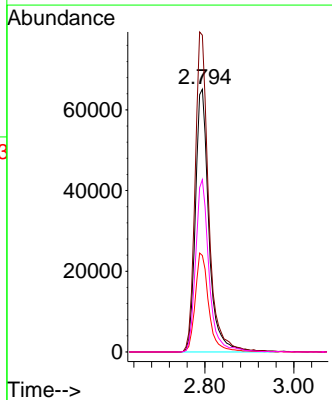
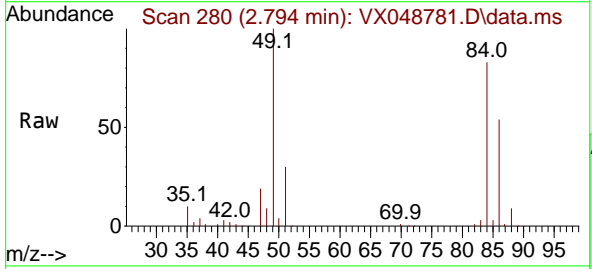
Ion	Ratio	Lower	Upper
43	100		
74	23.9	19.2	28.8

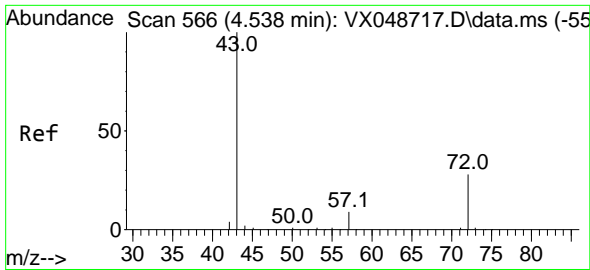


#20  
 Methylene Chloride  
 Concen: 69.711 ug/l  
 RT: 2.794 min Scan# 280  
 Delta R.T. 0.006 min  
 Lab File: VX048781.D  
 Acq: 09 Dec 2025 14:07

Tgt Ion: 84 Resp: 137957

Ion	Ratio	Lower	Upper
84	100		
49	120.6	98.7	148.1
51	36.7	29.4	44.2
86	65.6	52.5	78.7

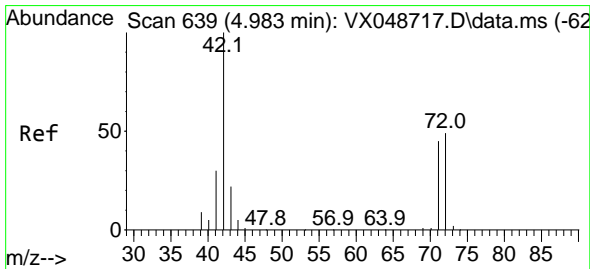
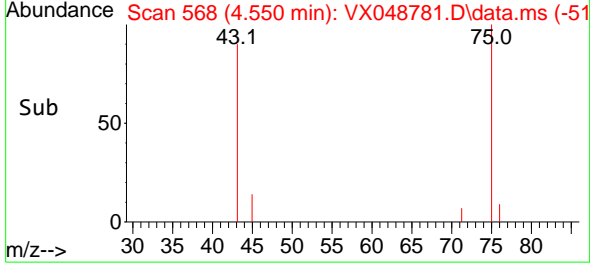
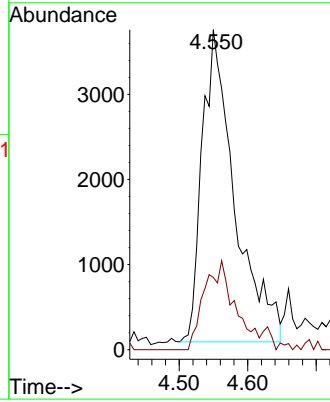
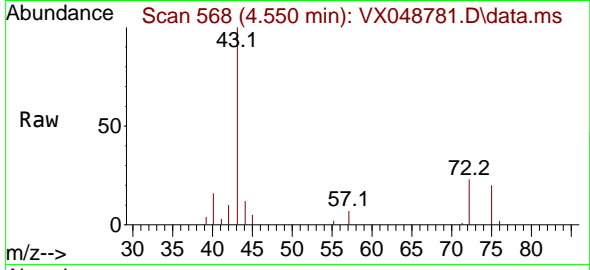




#25  
 2-Butanone  
 Concen: 10.432 ug/l  
 RT: 4.550 min Scan# 50  
 Delta R.T. 0.012 min  
 Lab File: VX048781.D  
 Acq: 09 Dec 2025 14:07

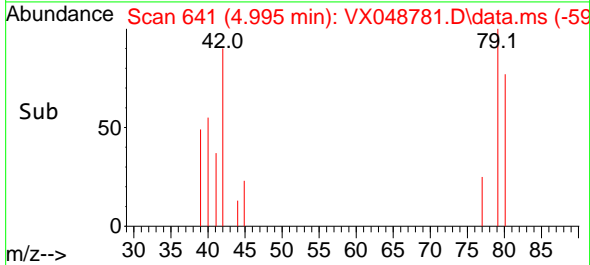
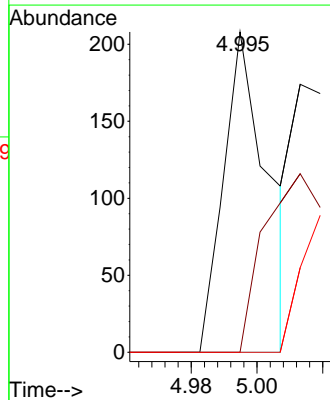
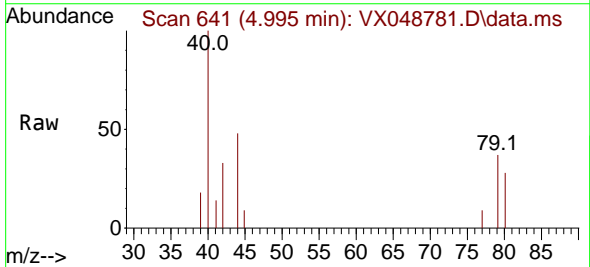
Instrument :  
 MSVOA\_X  
 ClientSampleId :  
 CHASE-E

Tgt Ion: 43 Resp: 12190  
 Ion Ratio Lower Upper  
 43 100  
 72 23.2 22.6 34.0

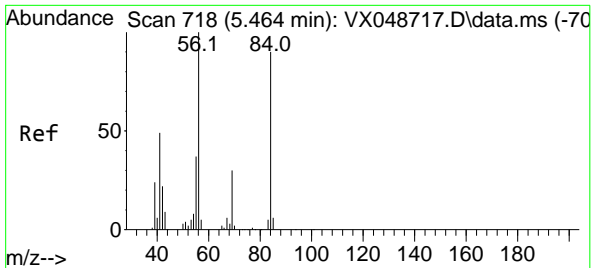


#29  
 Tetrahydrofuran  
 Concen: 0.217 ug/l  
 RT: 4.995 min Scan# 641  
 Delta R.T. 0.012 min  
 Lab File: VX048781.D  
 Acq: 09 Dec 2025 14:07

Tgt Ion: 42 Resp: 194  
 Ion Ratio Lower Upper  
 42 100  
 72 0.0 39.4 59.2#  
 71 0.0 35.8 53.6#

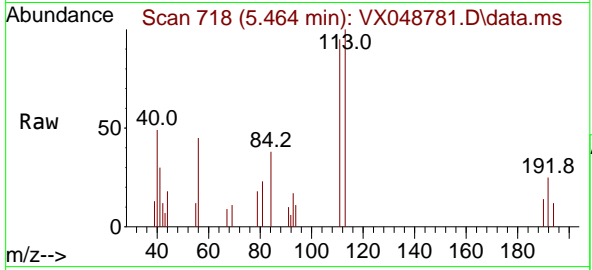




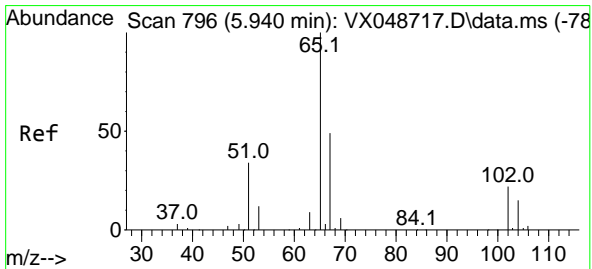
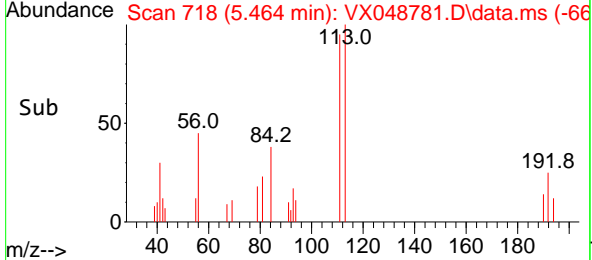
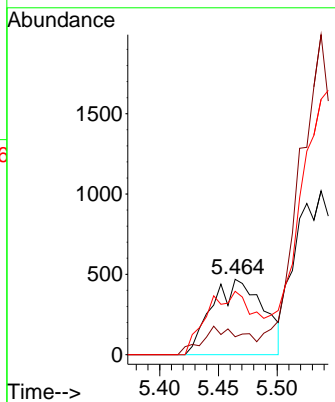


#31  
 Cyclohexane  
 Concen: 0.511 ug/l  
 RT: 5.464 min Scan# 718  
 Delta R.T. -0.000 min  
 Lab File: VX048781.D  
 Acq: 09 Dec 2025 14:07

Instrument : MSVOA\_X  
 ClientSampleId : CHASE-E

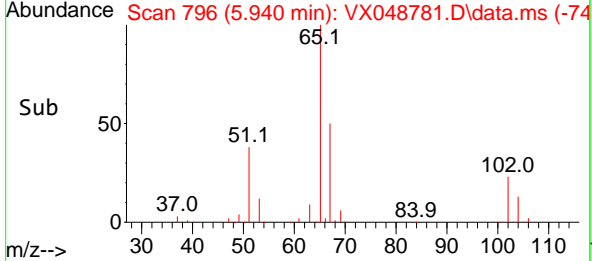
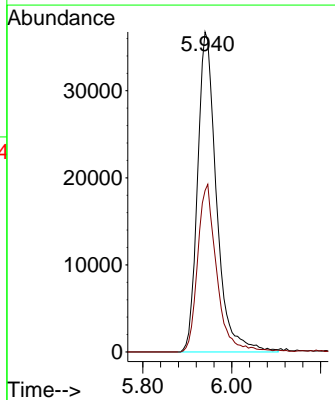
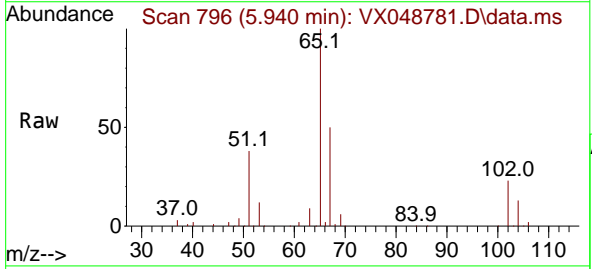


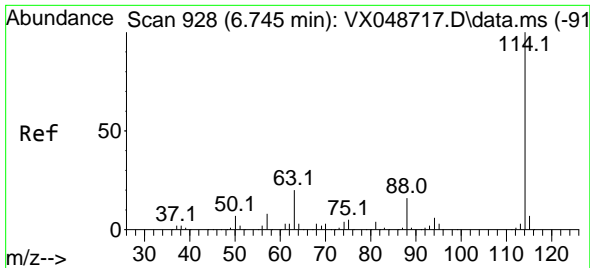
Tgt Ion: 56 Resp: 1428  
 Ion Ratio Lower Upper  
 56 100  
 69 23.7 24.2 36.2#  
 84 84.0 72.1 108.1



#33  
 1,2-Dichloroethane-d4  
 Concen: 52.672 ug/l  
 RT: 5.940 min Scan# 796  
 Delta R.T. -0.000 min  
 Lab File: VX048781.D  
 Acq: 09 Dec 2025 14:07

Tgt Ion: 65 Resp: 108937  
 Ion Ratio Lower Upper  
 65 100  
 67 52.7 0.0 107.4



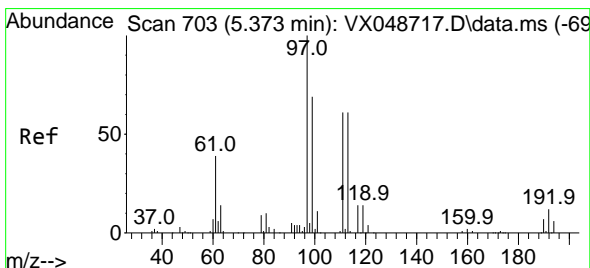
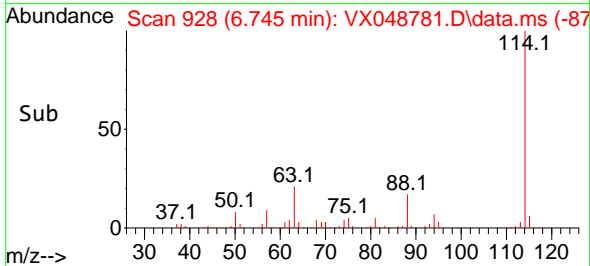
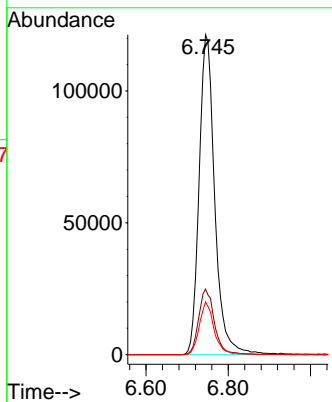
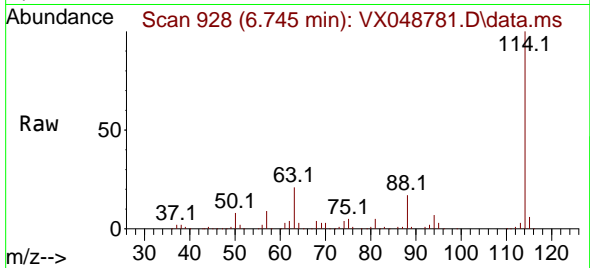


#34  
 1,4-Difluorobenzene  
 Concen: 50.000 ug/l  
 RT: 6.745 min Scan# 91  
 Delta R.T. -0.000 min  
 Lab File: VX048781.D  
 Acq: 09 Dec 2025 14:07

Instrument :  
 MSVOA\_X  
 ClientSampleId :  
 CHASE-E

Tgt Ion:114 Resp: 319884

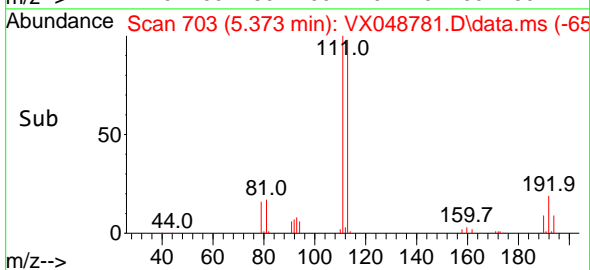
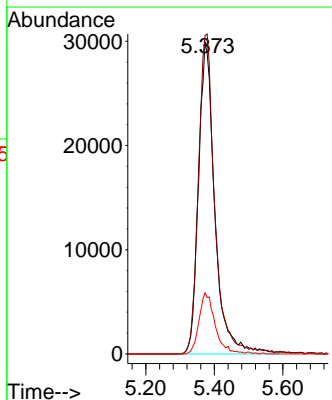
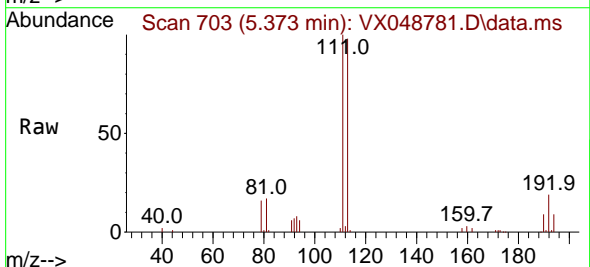
Ion	Ratio	Lower	Upper
114	100		
63	20.5	0.0	39.0
88	16.5	0.0	31.8

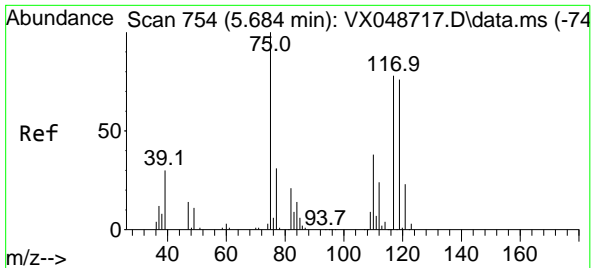


#35  
 Dibromofluoromethane  
 Concen: 45.198 ug/l  
 RT: 5.373 min Scan# 703  
 Delta R.T. -0.000 min  
 Lab File: VX048781.D  
 Acq: 09 Dec 2025 14:07

Tgt Ion:113 Resp: 99549

Ion	Ratio	Lower	Upper
113	100		
111	102.0	79.5	119.3
192	19.2	16.1	24.1

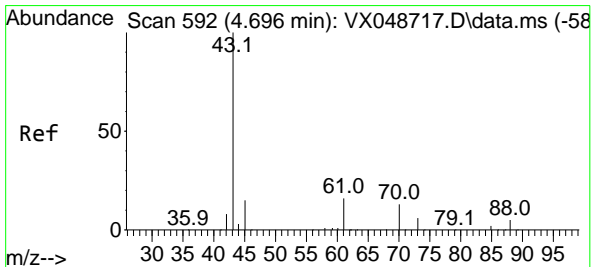
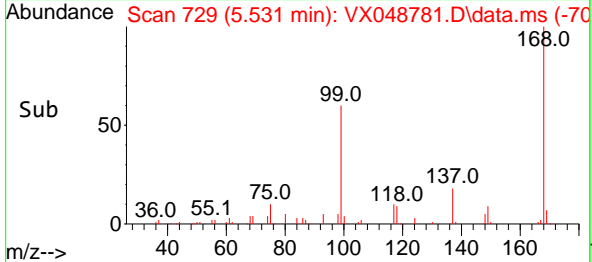
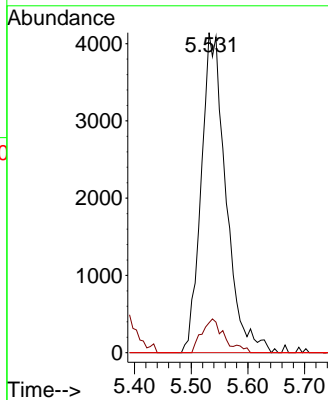
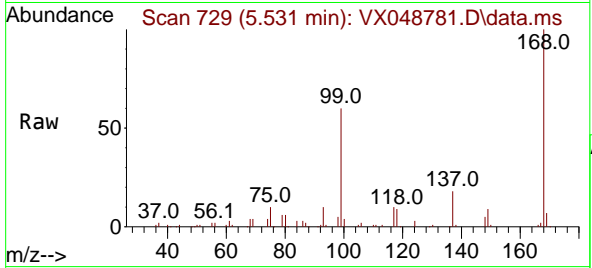




#36  
 1,1-Dichloropropene  
 Concen: 4.154 ug/l  
 RT: 5.531 min Scan# 711  
 Delta R.T. -0.153 min  
 Lab File: VX048781.D  
 Acq: 09 Dec 2025 14:07

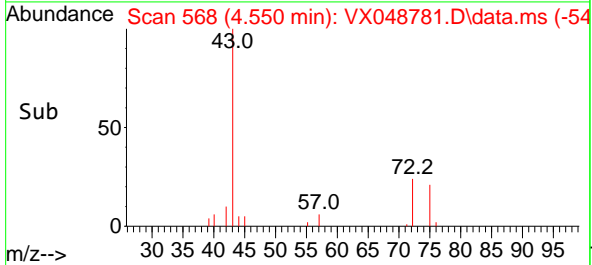
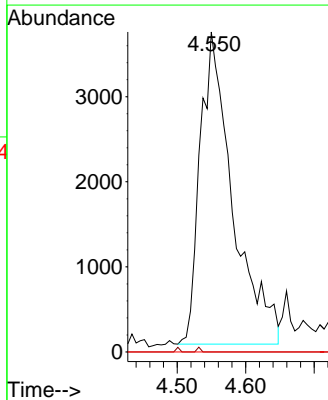
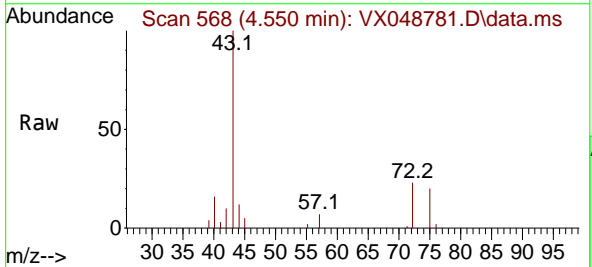
Instrument :  
 MSVOA\_X  
 ClientSampleId :  
 CHASE-E

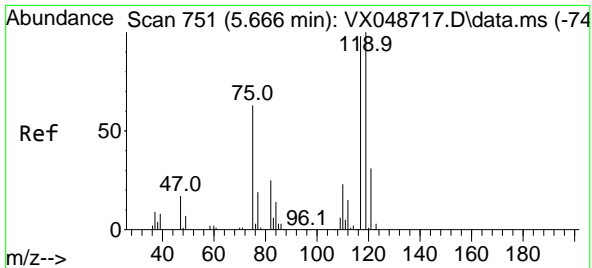
Tgt Ion	Resp	Lower	Upper
75	12532		
75	100		
110	9.7	18.6	55.8#
77	0.0	25.3	37.9#



#37  
 Ethyl Acetate  
 Concen: 3.382 ug/l  
 RT: 4.550 min Scan# 568  
 Delta R.T. -0.147 min  
 Lab File: VX048781.D  
 Acq: 09 Dec 2025 14:07

Tgt Ion	Resp	Lower	Upper
43	12190		
43	100		
61	0.2	9.7	14.5#
70	0.0	8.2	12.4#

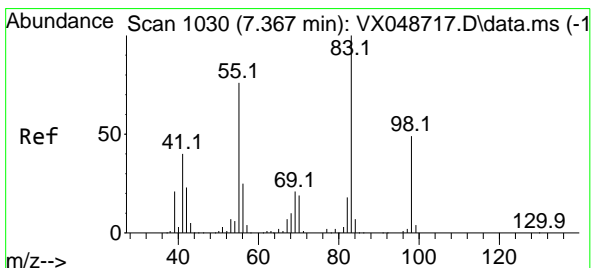
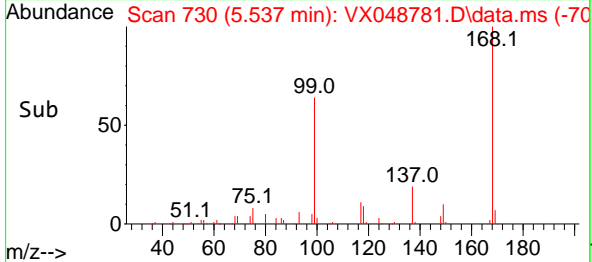
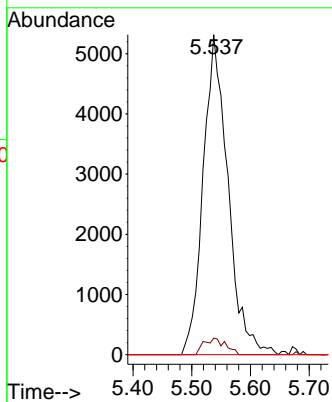
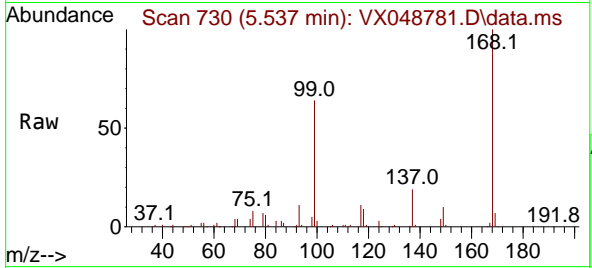




#38  
 Carbon Tetrachloride  
 Concen: 4.562 ug/l  
 RT: 5.537 min Scan# 71  
 Delta R.T. -0.128 min  
 Lab File: VX048781.D  
 Acq: 09 Dec 2025 14:07

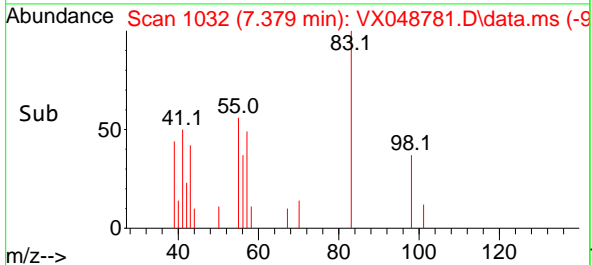
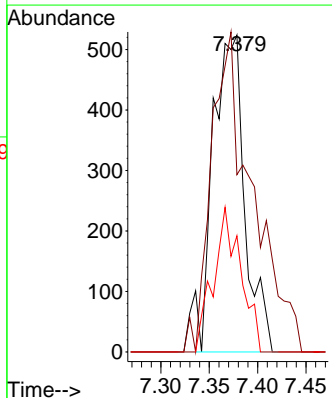
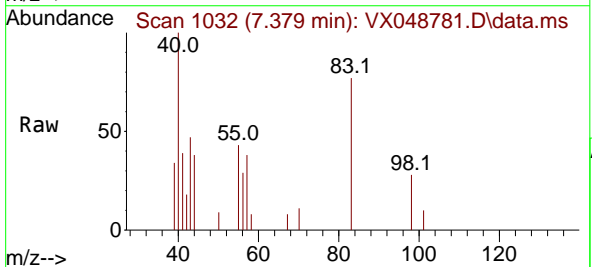
Instrument :  
 MSVOA\_X  
 ClientSampleId :  
 CHASE-E

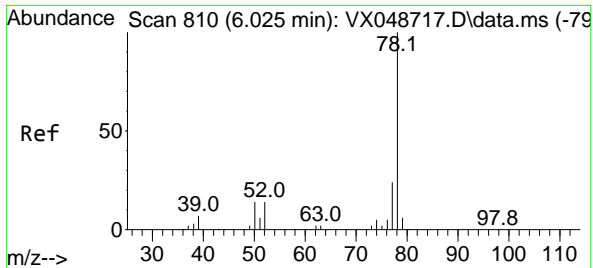
Tgt Ion	Resp	Lower	Upper
117	15588		
117	100		
119	5.2	80.5	120.7#
121	0.0	25.4	38.0#



#39  
 Methylcyclohexane  
 Concen: 0.345 ug/l  
 RT: 7.379 min Scan# 1032  
 Delta R.T. 0.012 min  
 Lab File: VX048781.D  
 Acq: 09 Dec 2025 14:07

Tgt Ion	Resp	Lower	Upper
83	1231		
83	100		
55	55.9	60.6	90.8#
98	36.6	39.3	58.9#

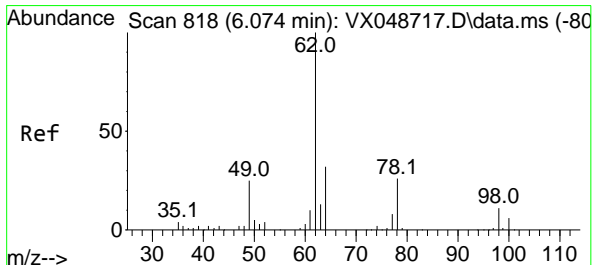
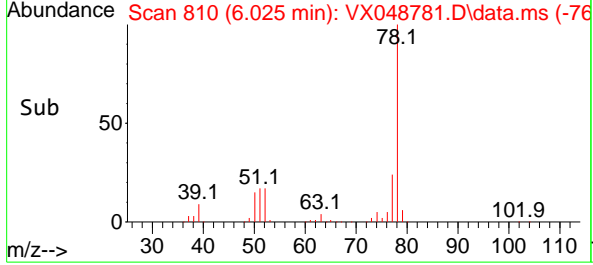
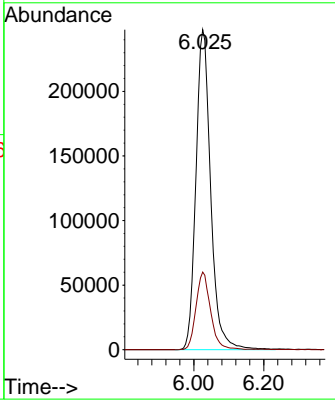
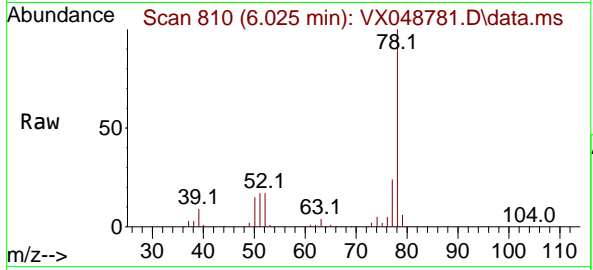




#40  
Benzene  
Concen: 81.067 ug/l  
RT: 6.025 min Scan# 810  
Delta R.T. -0.000 min  
Lab File: VX048781.D  
Acq: 09 Dec 2025 14:07

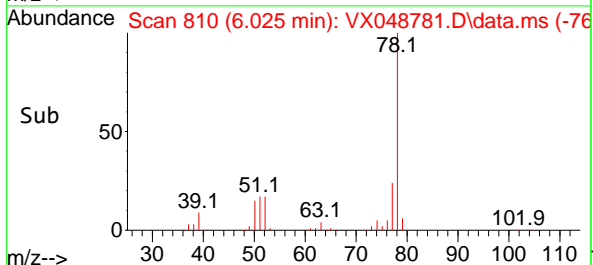
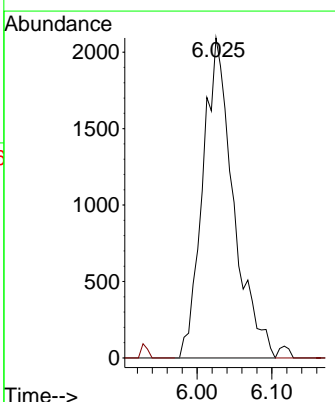
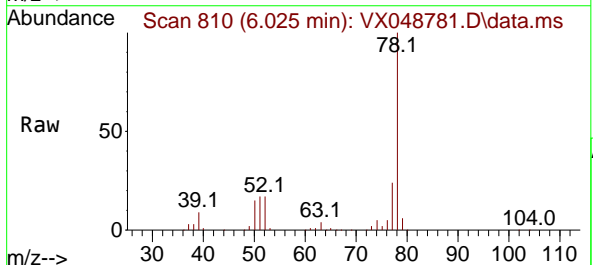
Instrument : MSVOA\_X  
ClientSampleId : CHASE-E

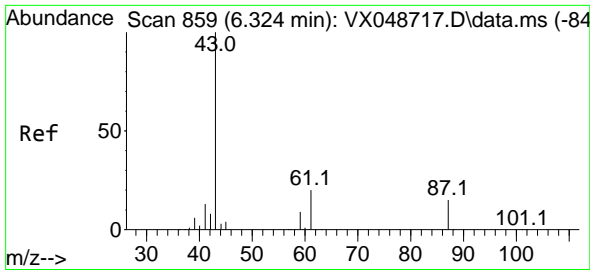
Tgt Ion: 78 Resp: 724968  
Ion Ratio Lower Upper  
78 100  
77 24.3 18.8 28.2



#42  
1,2-Dichloroethane  
Concen: 1.888 ug/l  
RT: 6.025 min Scan# 810  
Delta R.T. -0.049 min  
Lab File: VX048781.D  
Acq: 09 Dec 2025 14:07

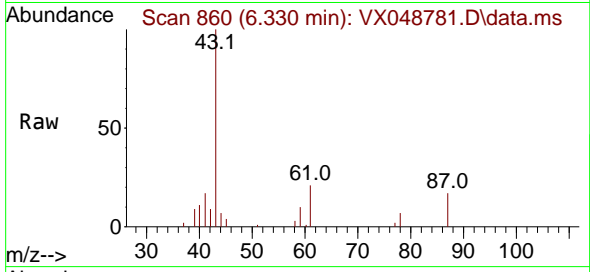
Tgt Ion: 62 Resp: 5976  
Ion Ratio Lower Upper  
62 100  
98 0.0 0.0 20.2



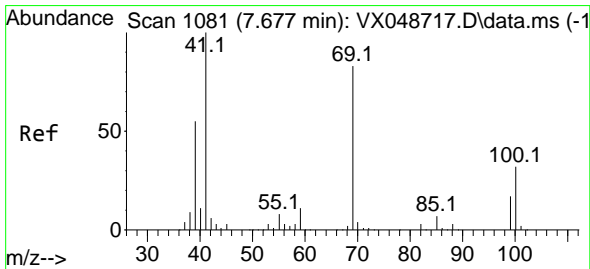
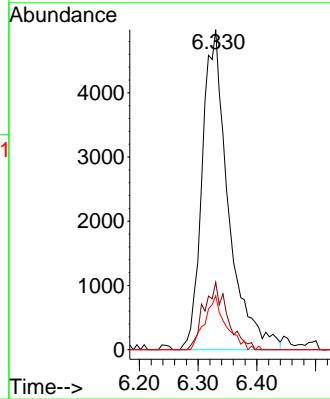
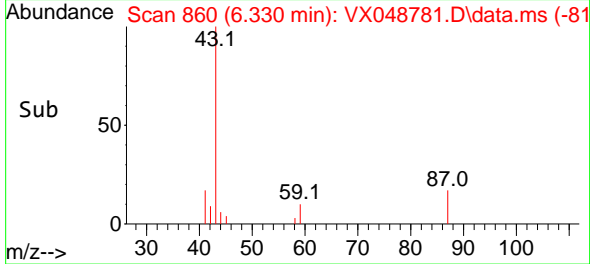


#43  
 Isopropyl Acetate  
 Concen: 2.823 ug/l  
 RT: 6.330 min Scan# 80  
 Delta R.T. 0.006 min  
 Lab File: VX048781.D  
 Acq: 09 Dec 2025 14:07

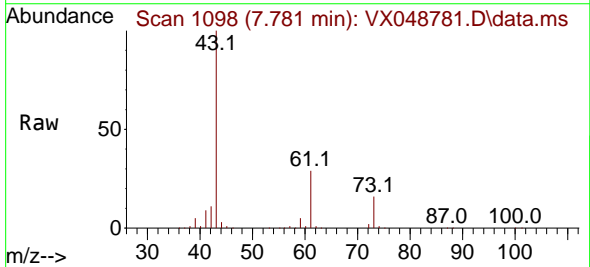
Instrument :  
 MSVOA\_X  
 ClientSampleId :  
 CHASE-E



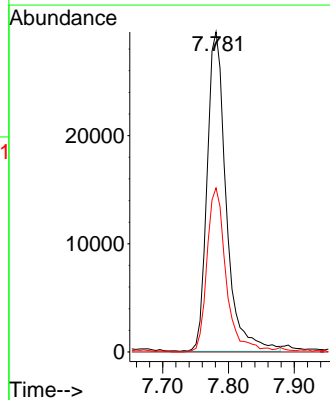
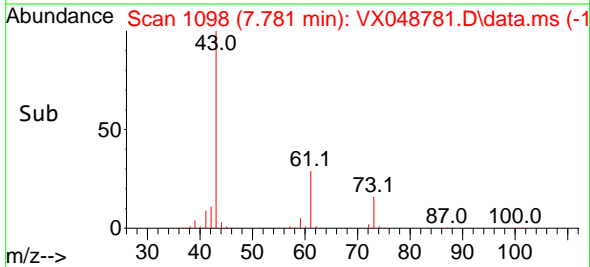
Tgt Ion: 43 Resp: 15406  
 Ion Ratio Lower Upper  
 43 100  
 61 18.9 16.8 25.2  
 87 13.7 11.8 17.6

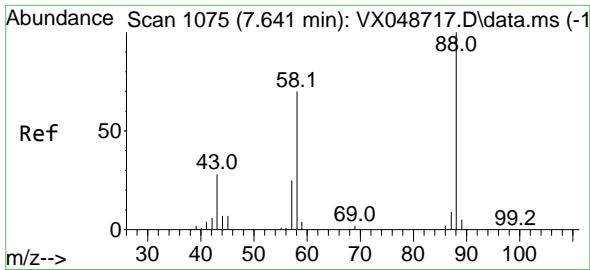


#48  
 Methyl methacrylate  
 Concen: 21.715 ug/l  
 RT: 7.781 min Scan# 1098  
 Delta R.T. 0.103 min  
 Lab File: VX048781.D  
 Acq: 09 Dec 2025 14:07



Tgt Ion: 41 Resp: 59623  
 Ion Ratio Lower Upper  
 41 100  
 69 0.0 68.5 102.7#  
 39 51.4 43.5 65.3

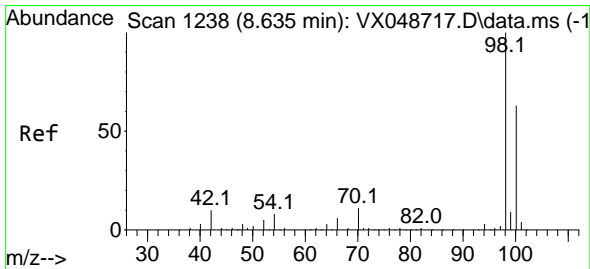
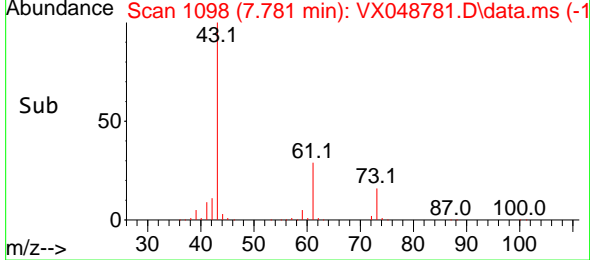
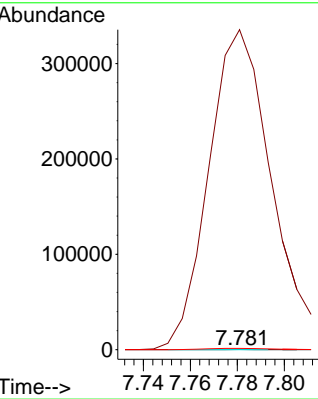
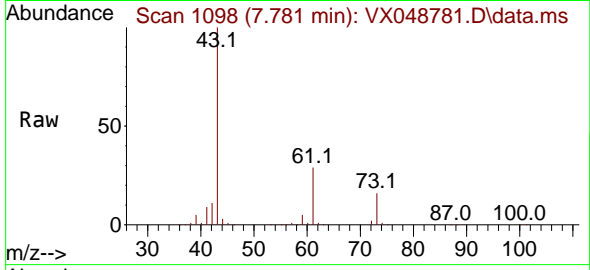




#49  
 1,4-Dioxane  
 Concen: 3.098 ug/l  
 RT: 7.781 min Scan# 1098  
 Delta R.T. 0.140 min  
 Lab File: VX048781.D  
 Acq: 09 Dec 2025 14:07

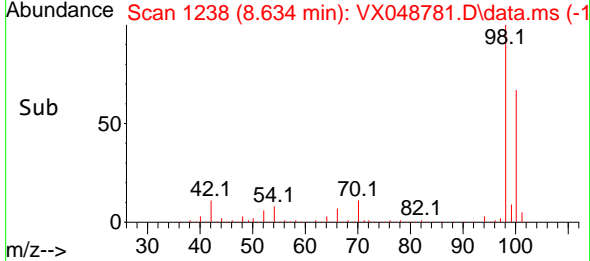
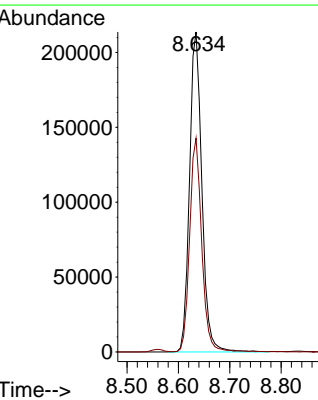
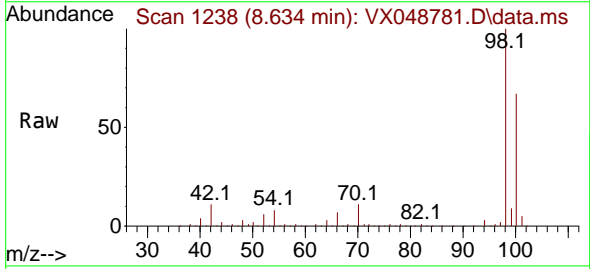
Instrument :  
 MSVOA\_X  
 ClientSampleId :  
 CHASE-E

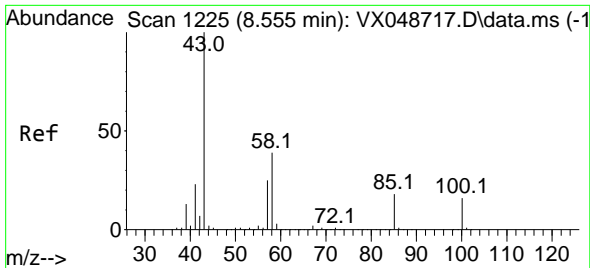
Tgt Ion: 88 Resp: 117  
 Ion Ratio Lower Upper  
 88 100  
 43 567894.0 28.6 43.0#  
 58 2600.9 58.0 87.0#



#50  
 Toluene-d8  
 Concen: 46.154 ug/l  
 RT: 8.634 min Scan# 1238  
 Delta R.T. -0.000 min  
 Lab File: VX048781.D  
 Acq: 09 Dec 2025 14:07

Tgt Ion: 98 Resp: 356333  
 Ion Ratio Lower Upper  
 98 100  
 100 64.8 53.4 80.0

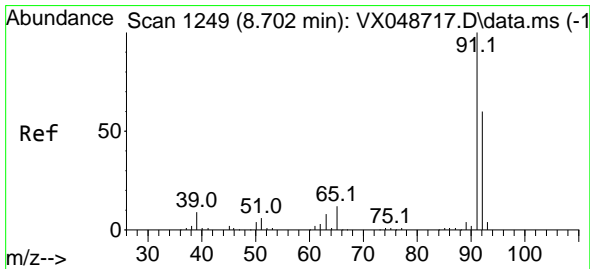
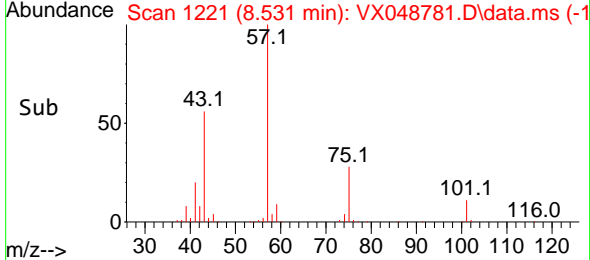
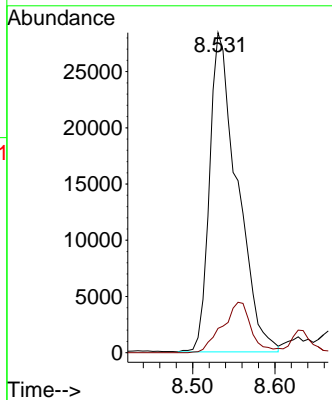
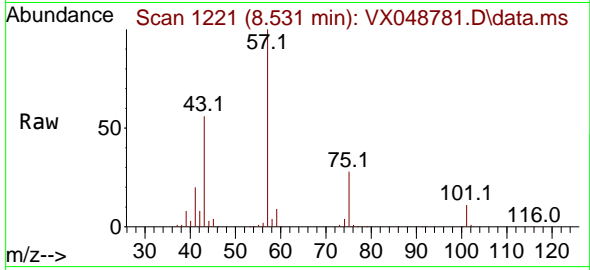




#51  
 4-Methyl-2-Pentanone  
 Concen: 19.625 ug/l  
 RT: 8.531 min Scan# 1221  
 Delta R.T. -0.025 min  
 Lab File: VX048781.D  
 Acq: 09 Dec 2025 14:07

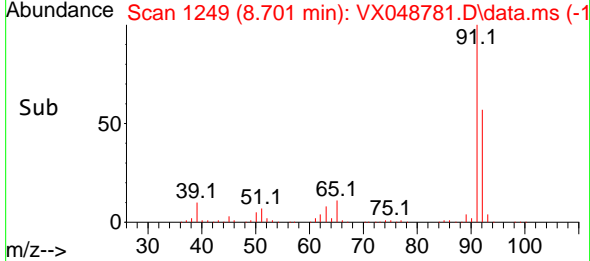
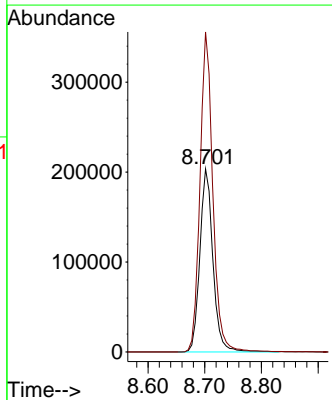
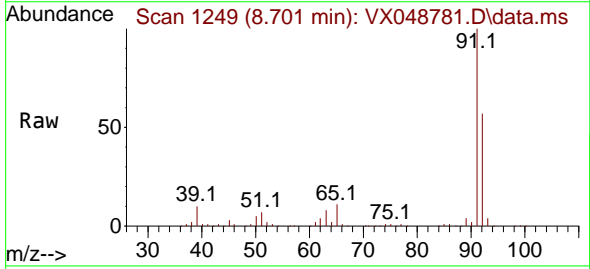
Instrument : MSVOA\_X  
 ClientSampleId : CHASE-E

Tgt Ion: 43 Resp: 66487  
 Ion Ratio Lower Upper  
 43 100  
 58 0.0 32.2 48.4#

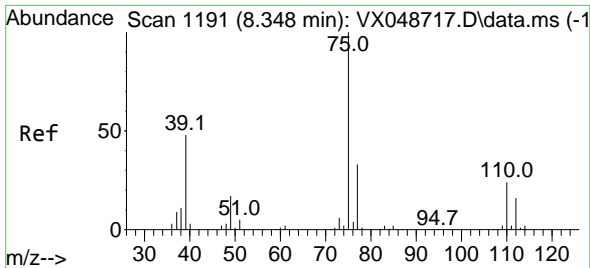


#52  
 Toluene  
 Concen: 60.430 ug/l  
 RT: 8.701 min Scan# 1249  
 Delta R.T. -0.000 min  
 Lab File: VX048781.D  
 Acq: 09 Dec 2025 14:07

Tgt Ion: 92 Resp: 325876  
 Ion Ratio Lower Upper  
 92 100  
 91 171.6 136.3 204.5





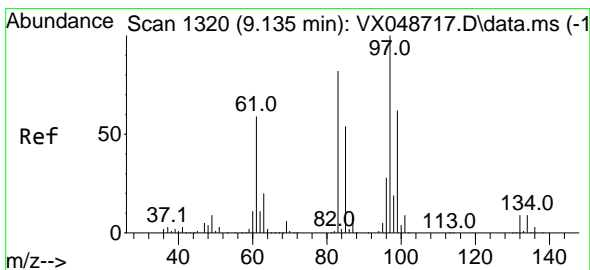
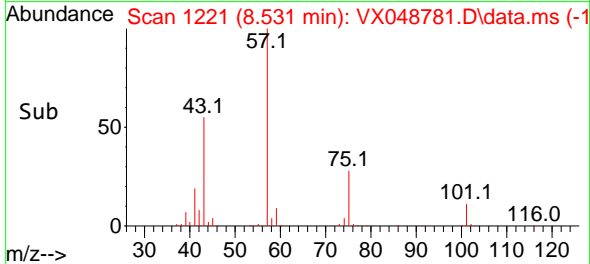
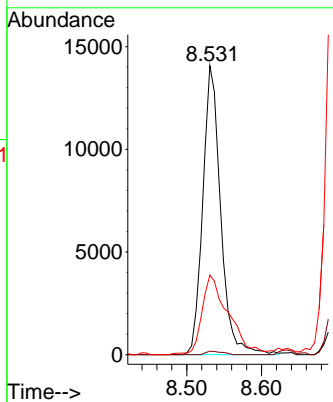
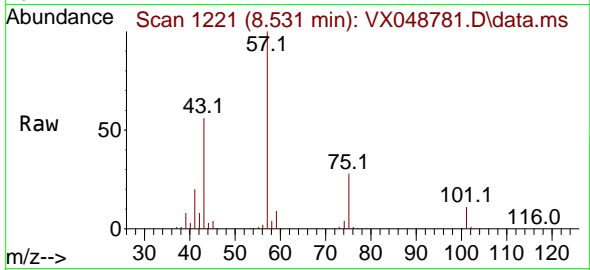


#54  
 cis-1,3-Dichloropropene  
 Concen: 6.477 ug/l  
 RT: 8.531 min Scan# 1191  
 Delta R.T. 0.183 min  
 Lab File: VX048781.D  
 Acq: 09 Dec 2025 14:07

Instrument : MSVOA\_X  
 ClientSampleId : CHASE-E

Tgt Ion: 75 Resp: 23403

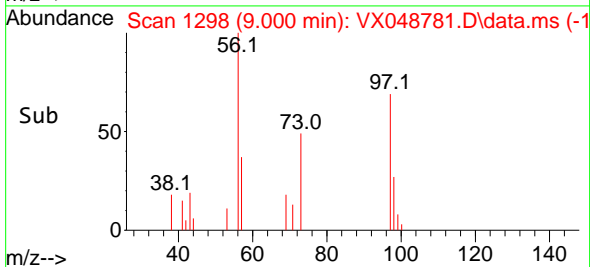
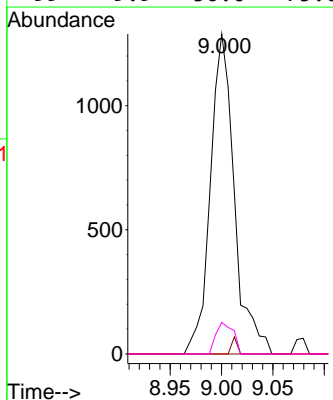
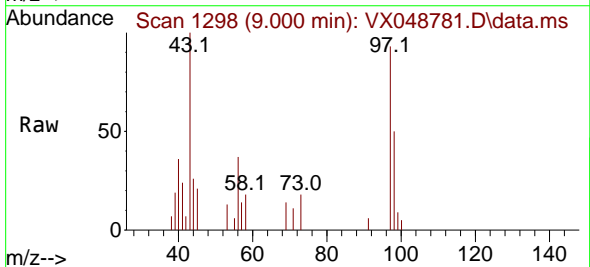
Ion	Ratio	Lower	Upper
75	100		
77	1.2	26.1	39.1#
39	27.0	38.2	57.4#

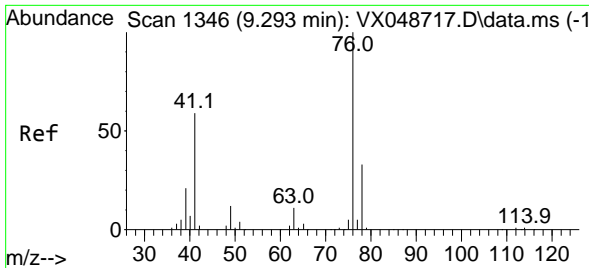


#55  
 1,1,2-Trichloroethane  
 Concen: 0.962 ug/l  
 RT: 9.000 min Scan# 1298  
 Delta R.T. -0.134 min  
 Lab File: VX048781.D  
 Acq: 09 Dec 2025 14:07

Tgt Ion: 97 Resp: 2088

Ion	Ratio	Lower	Upper
97	100		
83	0.0	66.0	99.0#
85	0.0	43.2	64.8#
99	9.9	50.0	75.0#

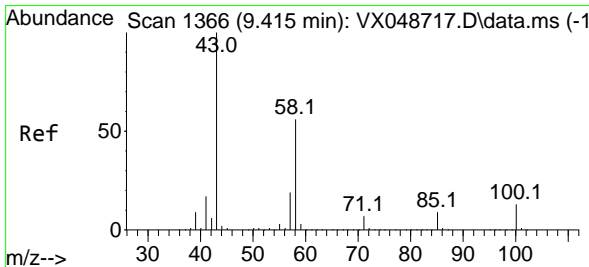
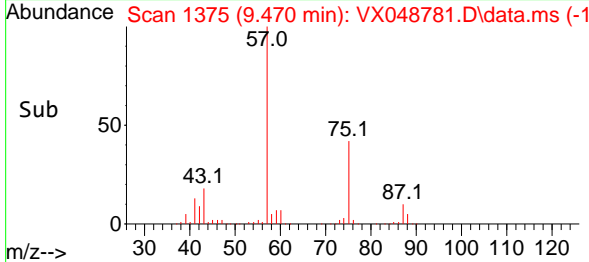
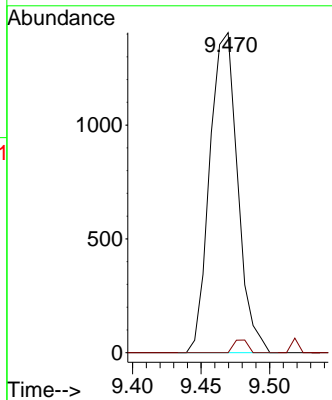
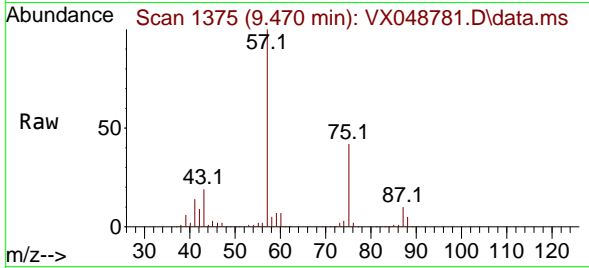




#57  
 1,3-Dichloropropane  
 Concen: 0.553 ug/l  
 RT: 9.470 min Scan# 1375  
 Delta R.T. 0.177 min  
 Lab File: VX048781.D  
 Acq: 09 Dec 2025 14:07

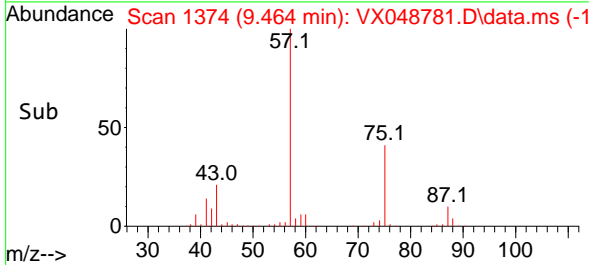
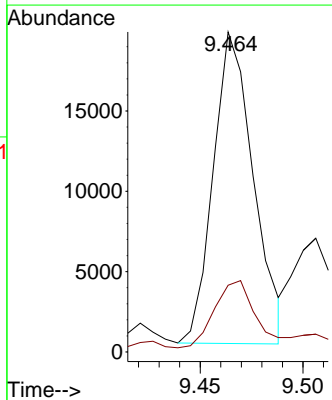
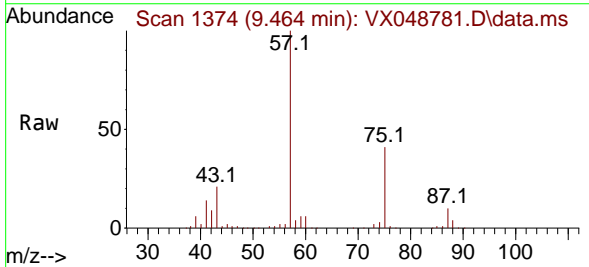
Instrument :  
 MSVOA\_X  
 ClientSampleId :  
 CHASE-E

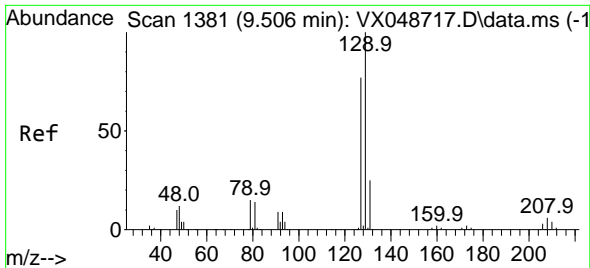
Tgt Ion: 76 Resp: 1996  
 Ion Ratio Lower Upper  
 76 100  
 78 2.1 26.0 39.0#



#59  
 2-Hexanone  
 Concen: 11.099 ug/l  
 RT: 9.464 min Scan# 1374  
 Delta R.T. 0.049 min  
 Lab File: VX048781.D  
 Acq: 09 Dec 2025 14:07

Tgt Ion: 43 Resp: 26395  
 Ion Ratio Lower Upper  
 43 100  
 58 22.5 27.8 83.4#

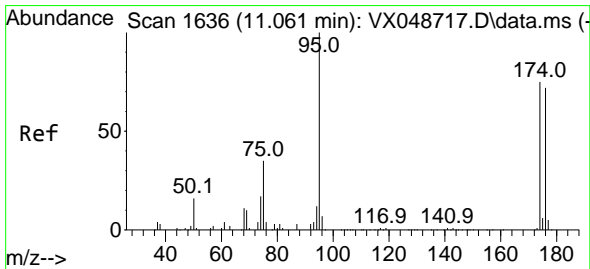
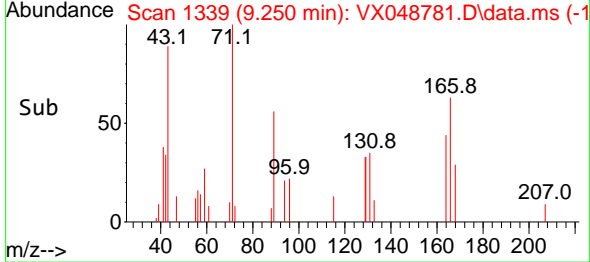
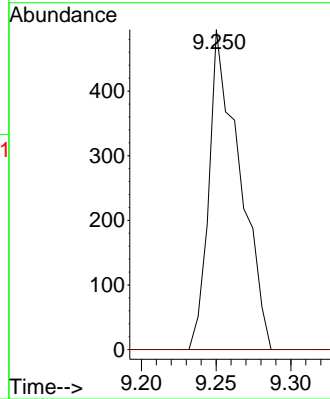
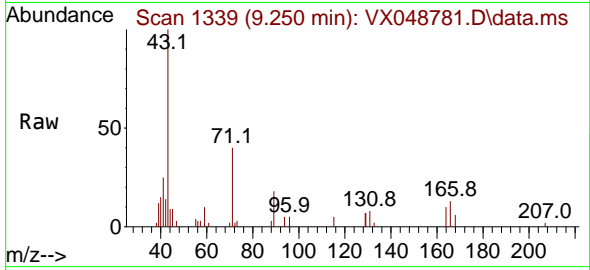




#60  
 Dibromochloromethane  
 Concen: 0.264 ug/l  
 RT: 9.250 min Scan# 11  
 Delta R.T. -0.256 min  
 Lab File: VX048781.D  
 Acq: 09 Dec 2025 14:07

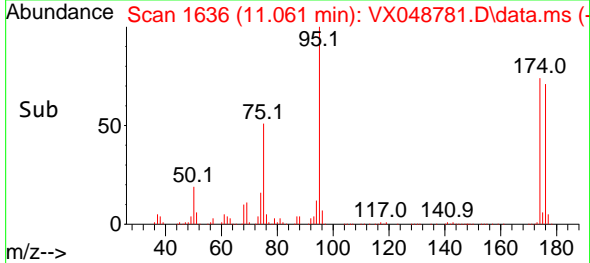
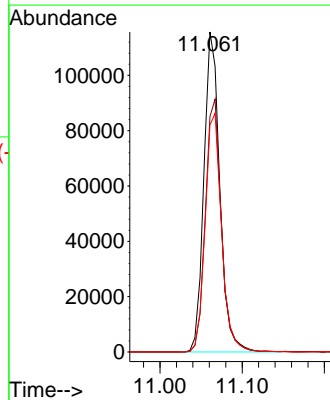
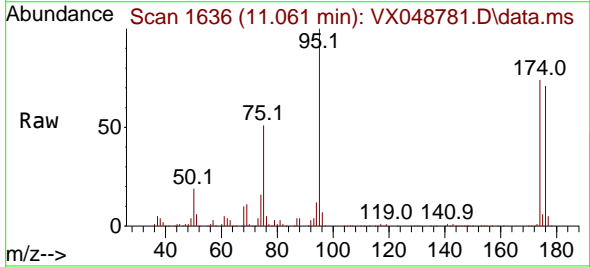
Instrument :  
 MSVOA\_X  
 ClientSampleId :  
 CHASE-E

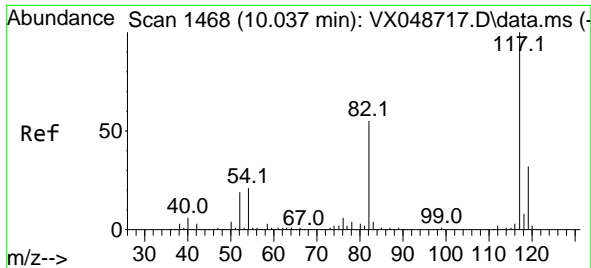
Tgt Ion:129 Resp: 708  
 Ion Ratio Lower Upper  
 129 100  
 127 0.0 38.3 114.9#



#62  
 4-Bromofluorobenzene  
 Concen: 58.528 ug/l  
 RT: 11.061 min Scan# 1636  
 Delta R.T. -0.000 min  
 Lab File: VX048781.D  
 Acq: 09 Dec 2025 14:07

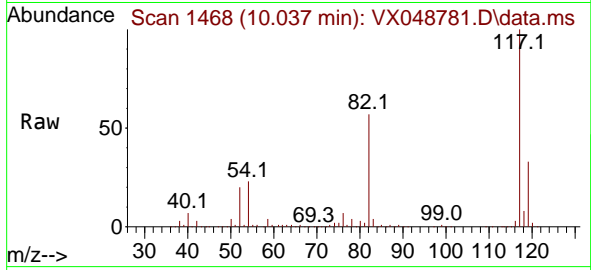
Tgt Ion: 95 Resp: 155819  
 Ion Ratio Lower Upper  
 95 100  
 174 79.3 0.0 157.8  
 176 76.8 0.0 154.0



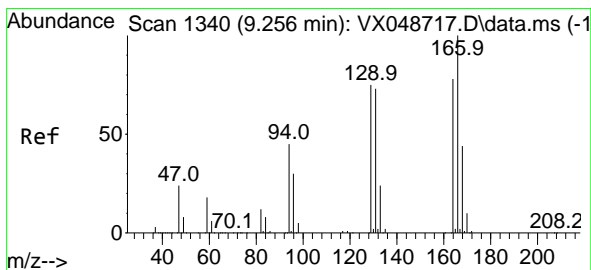
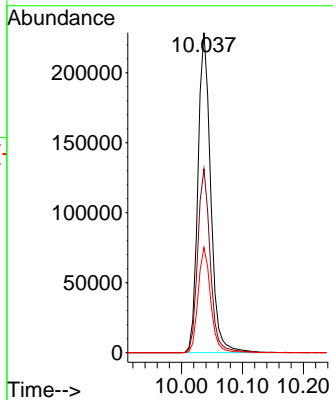
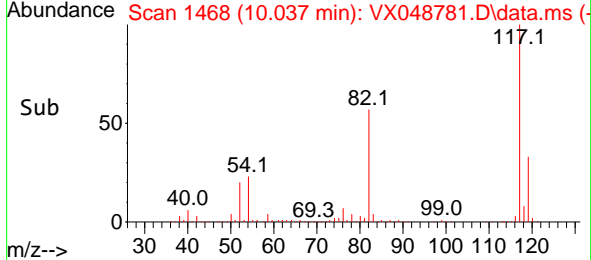


#63  
 Chlorobenzene-d5  
 Concen: 50.000 ug/l  
 RT: 10.037 min Scan# 1468  
 Delta R.T. -0.000 min  
 Lab File: VX048781.D  
 Acq: 09 Dec 2025 14:07

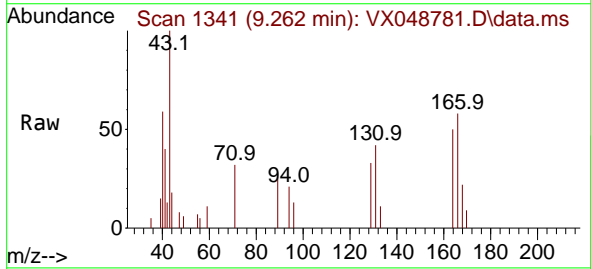
Instrument : MSVOA\_X  
 ClientSampleId : CHASE-E



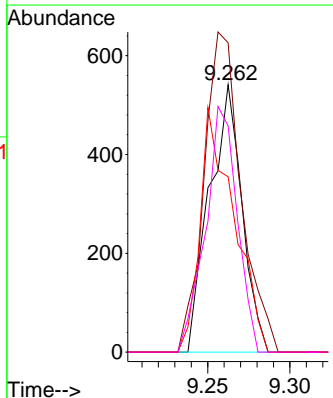
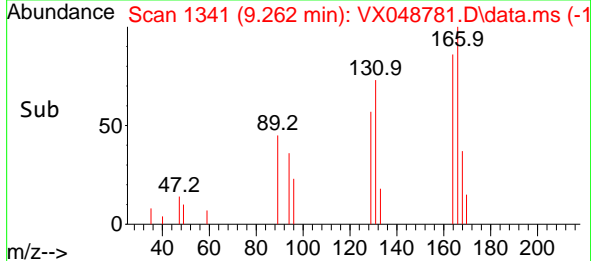
Tgt Ion:117 Resp: 331882  
 Ion Ratio Lower Upper  
 117 100  
 82 57.5 44.1 66.1  
 119 32.9 25.2 37.8

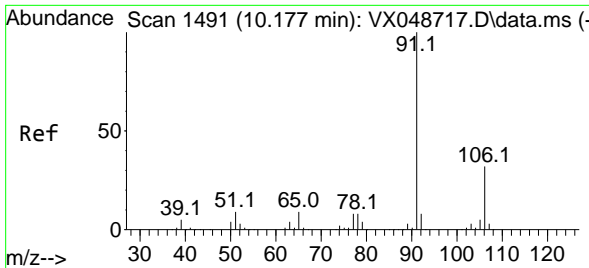


#64  
 Tetrachloroethene  
 Concen: 0.308 ug/l  
 RT: 9.262 min Scan# 1341  
 Delta R.T. 0.006 min  
 Lab File: VX048781.D  
 Acq: 09 Dec 2025 14:07



Tgt Ion:164 Resp: 744  
 Ion Ratio Lower Upper  
 164 100  
 166 115.7 103.1 154.7  
 129 65.6 76.9 115.3#  
 131 84.7 75.1 112.7

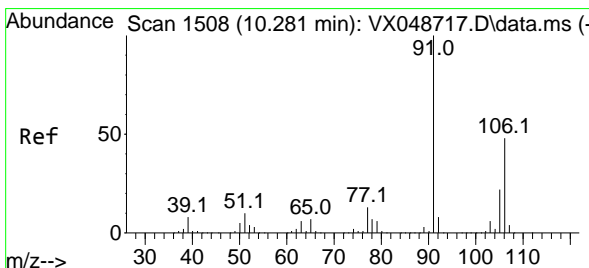
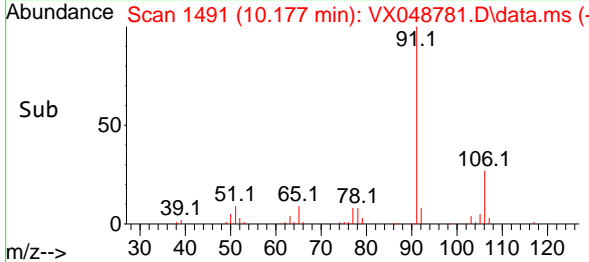
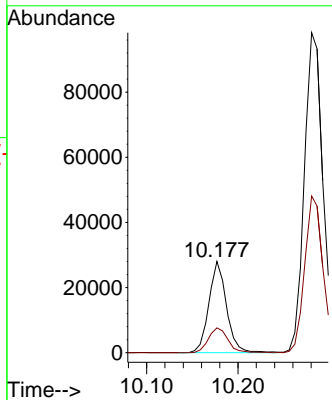
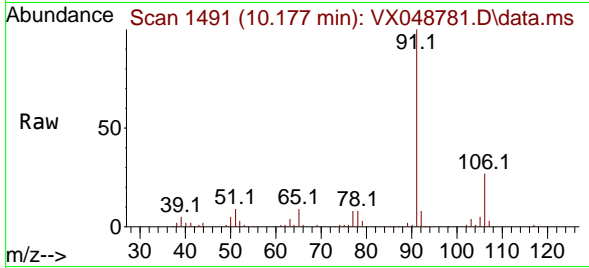




#67  
 Ethyl Benzene  
 Concen: 3.168 ug/l  
 RT: 10.177 min Scan# 1491  
 Delta R.T. -0.000 min  
 Lab File: VX048781.D  
 Acq: 09 Dec 2025 14:07

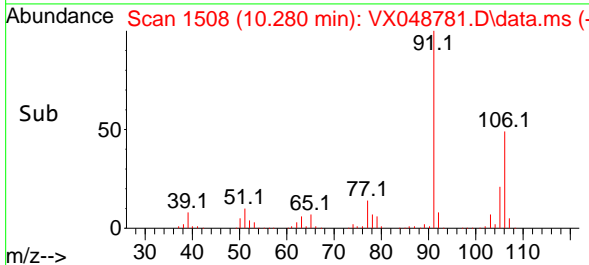
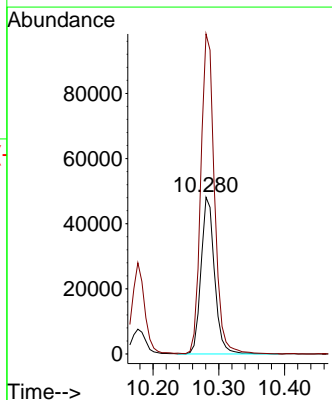
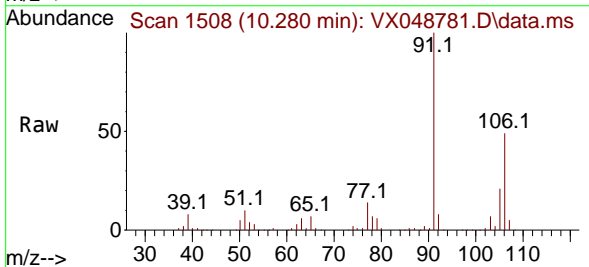
Instrument : MSVOA\_X  
 ClientSampleId : CHASE-E

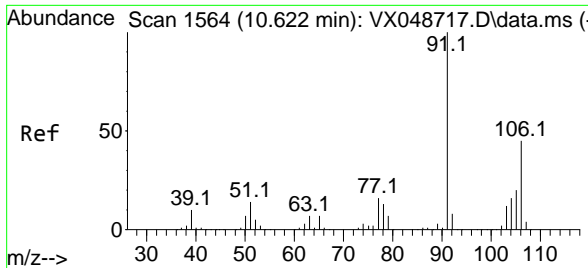
Tgt Ion: 91 Resp: 37558  
 Ion Ratio Lower Upper  
 91 100  
 106 27.2 25.3 37.9



#68  
 m/p-Xylenes  
 Concen: 14.904 ug/l  
 RT: 10.280 min Scan# 1508  
 Delta R.T. -0.000 min  
 Lab File: VX048781.D  
 Acq: 09 Dec 2025 14:07

Tgt Ion: 106 Resp: 68821  
 Ion Ratio Lower Upper  
 106 100  
 91 207.0 164.2 246.4

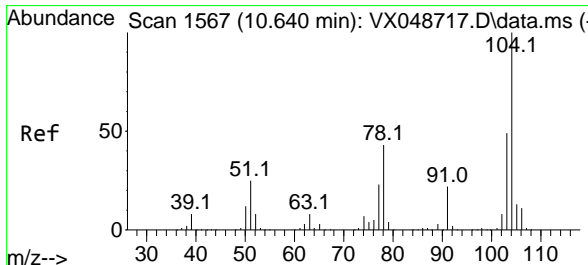
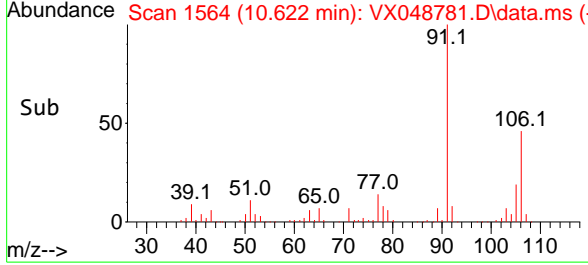
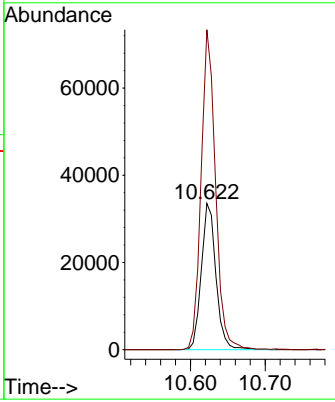
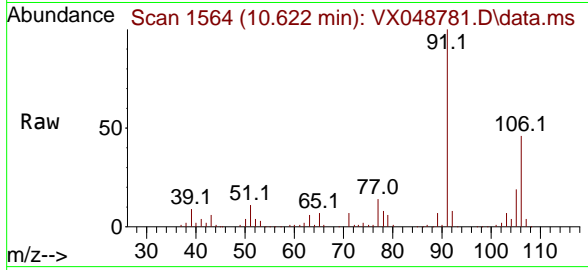




#69  
 o-Xylene  
 Concen: 10.523 ug/l  
 RT: 10.622 min Scan# 1564  
 Delta R.T. -0.000 min  
 Lab File: VX048781.D  
 Acq: 09 Dec 2025 14:07

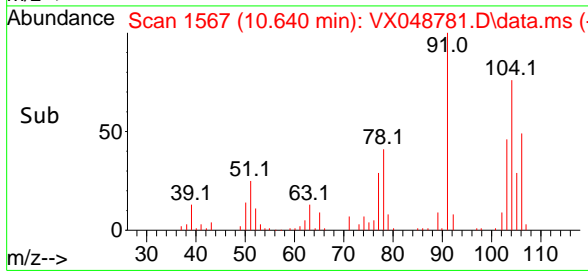
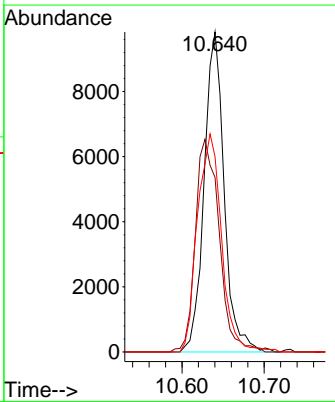
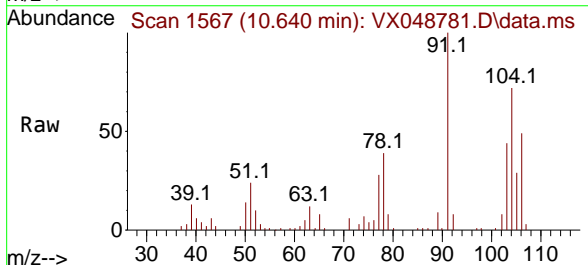
Instrument : MSVOA\_X  
 ClientSampleId : CHASE-E

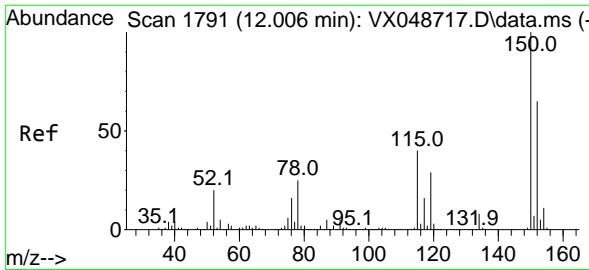
Tgt Ion:106 Resp: 45531  
 Ion Ratio Lower Upper  
 106 100  
 91 215.5 108.1 324.3



#70  
 Styrene  
 Concen: 2.245 ug/l  
 RT: 10.640 min Scan# 1567  
 Delta R.T. -0.000 min  
 Lab File: VX048781.D  
 Acq: 09 Dec 2025 14:07

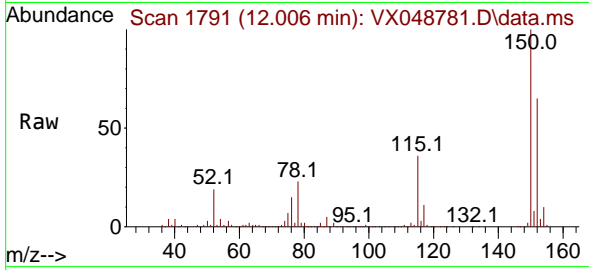
Tgt Ion:104 Resp: 16679  
 Ion Ratio Lower Upper  
 104 100  
 78 78.7 40.6 60.8#  
 103 81.8 43.4 65.2#



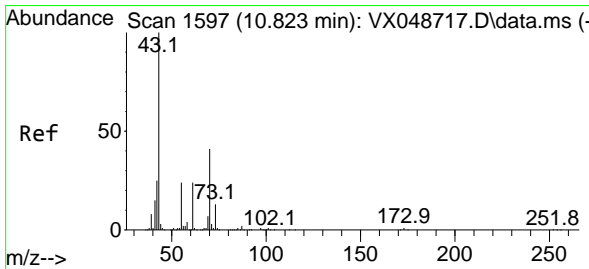
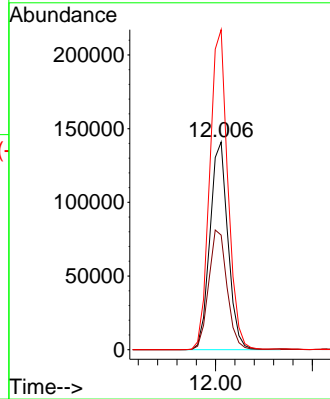
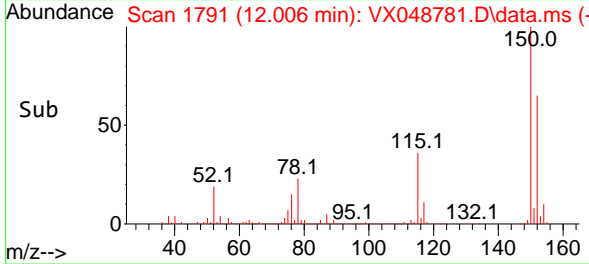


#72  
 1,4-Dichlorobenzene-d4  
 Concen: 50.000 ug/l  
 RT: 12.006 min Scan# 11  
 Delta R.T. -0.000 min  
 Lab File: VX048781.D  
 Acq: 09 Dec 2025 14:07

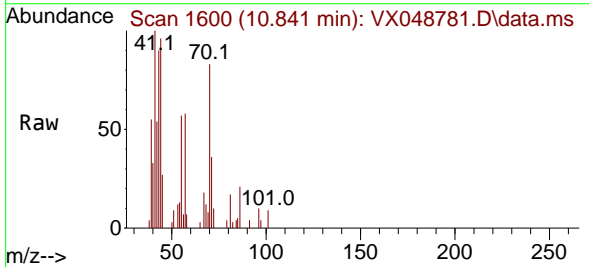
Instrument :  
 MSVOA\_X  
 ClientSampleId :  
 CHASE-E



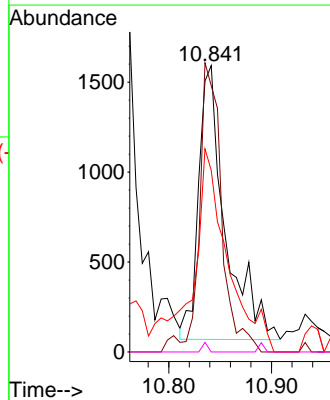
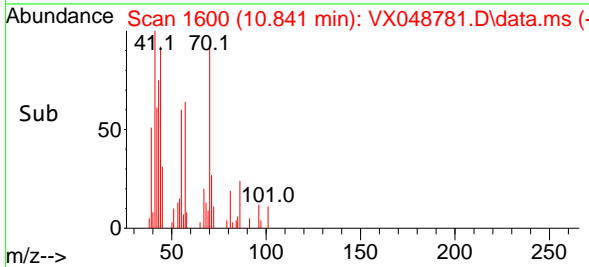
Tgt Ion:152 Resp: 182415  
 Ion Ratio Lower Upper  
 152 100  
 115 58.8 42.1 126.4  
 150 155.2 0.0 347.8

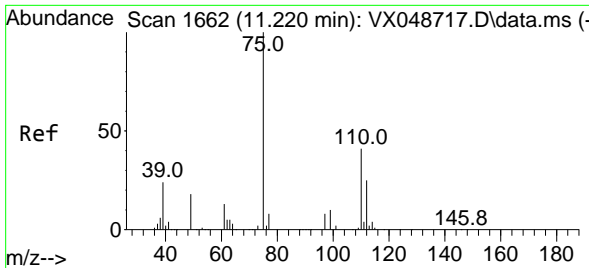


#74  
 N-amy1 acetate  
 Concen: 0.517 ug/l  
 RT: 10.841 min Scan# 1600  
 Delta R.T. 0.018 min  
 Lab File: VX048781.D  
 Acq: 09 Dec 2025 14:07



Tgt Ion: 43 Resp: 2762  
 Ion Ratio Lower Upper  
 43 100  
 70 87.9 33.9 50.9#  
 55 93.9 19.1 28.7#  
 61 0.0 19.0 28.6#

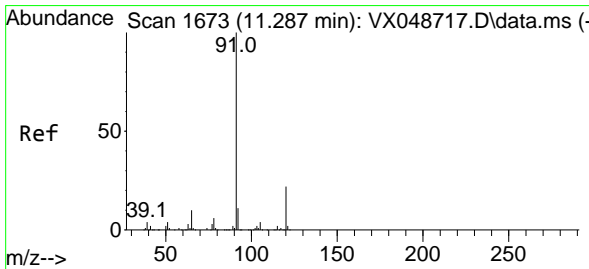
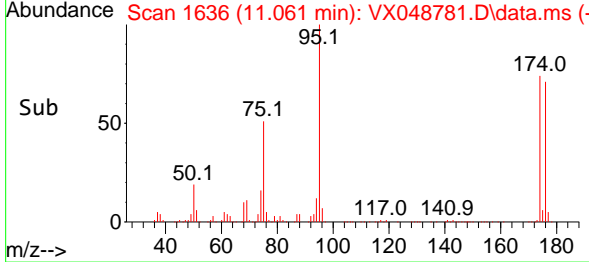
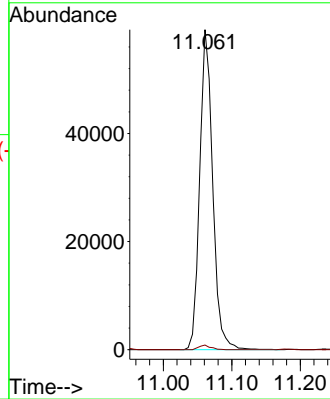
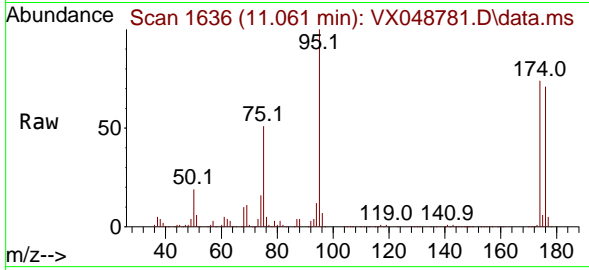




#76  
 1,2,3-Trichloropropane  
 Concen: 22.998 ug/l  
 RT: 11.061 min Scan# 1636  
 Delta R.T. -0.159 min  
 Lab File: VX048781.D  
 Acq: 09 Dec 2025 14:07

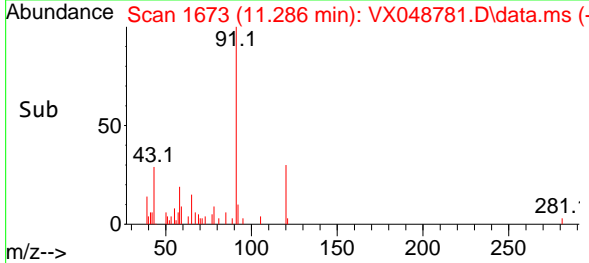
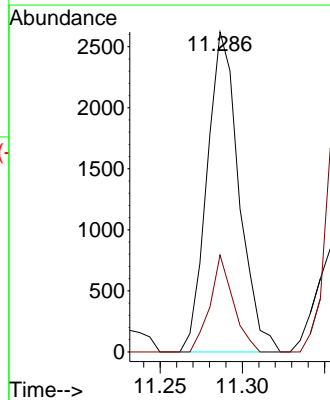
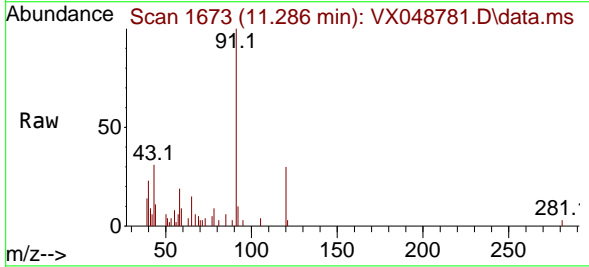
Instrument :  
 MSVOA\_X  
 ClientSampleId :  
 CHASE-E

Tgt Ion: 75 Resp: 78135  
 Ion Ratio Lower Upper  
 75 100  
 77 1.3 24.3 73.0#

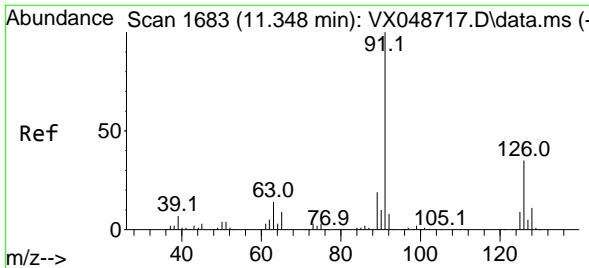


#78  
 n-propylbenzene  
 Concen: 0.249 ug/l  
 RT: 11.286 min Scan# 1673  
 Delta R.T. -0.000 min  
 Lab File: VX048781.D  
 Acq: 09 Dec 2025 14:07

Tgt Ion: 91 Resp: 3551  
 Ion Ratio Lower Upper  
 91 100  
 120 22.1 11.4 34.2



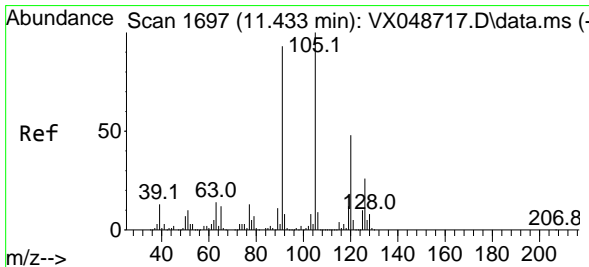
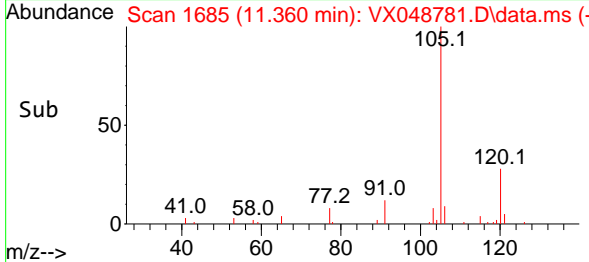
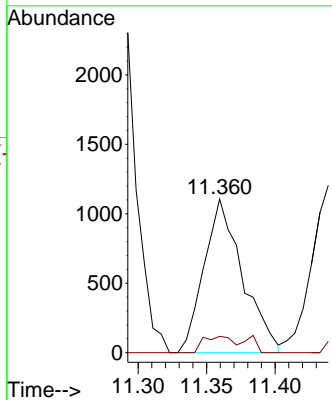
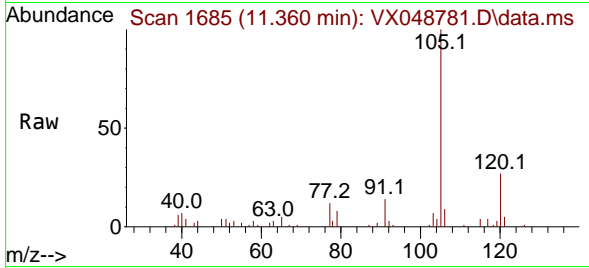




#79  
 2-Chlorotoluene  
 Concen: 0.249 ug/l  
 RT: 11.360 min Scan# 1685  
 Delta R.T. 0.012 min  
 Lab File: VX048781.D  
 Acq: 09 Dec 2025 14:07

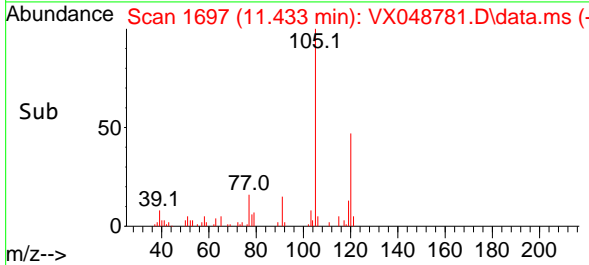
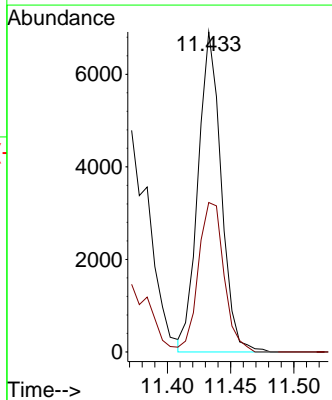
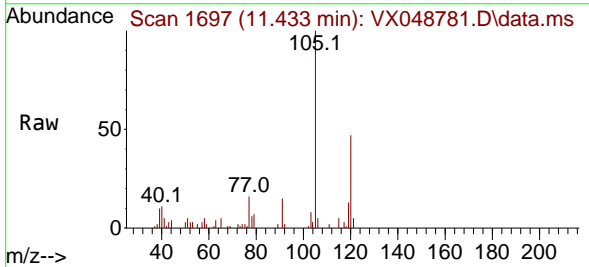
Instrument : MSVOA\_X  
 ClientSampleId : CHASE-E

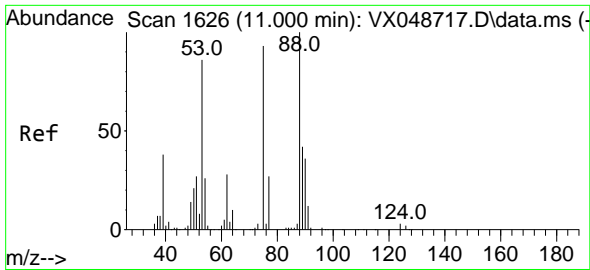
Tgt Ion: 91 Resp: 2164  
 Ion Ratio Lower Upper  
 91 100  
 126 0.0 16.8 50.3#



#80  
 1,3,5-Trimethylbenzene  
 Concen: 0.872 ug/l  
 RT: 11.433 min Scan# 1697  
 Delta R.T. -0.000 min  
 Lab File: VX048781.D  
 Acq: 09 Dec 2025 14:07

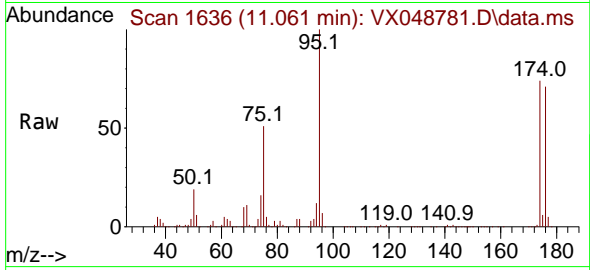
Tgt Ion: 105 Resp: 8808  
 Ion Ratio Lower Upper  
 105 100  
 120 51.7 24.4 73.2



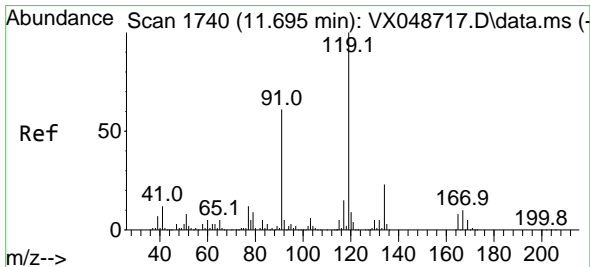
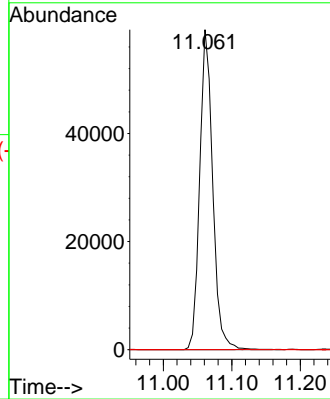
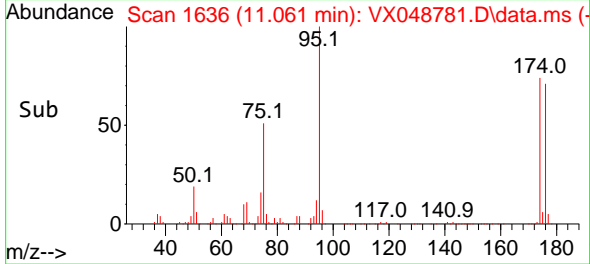


#81  
 trans-1,4-Dichloro-2-butene  
 Concen: 54.628 ug/l  
 RT: 11.061 min Scan# 1  
 Delta R.T. 0.061 min  
 Lab File: VX048781.D  
 Acq: 09 Dec 2025 14:07

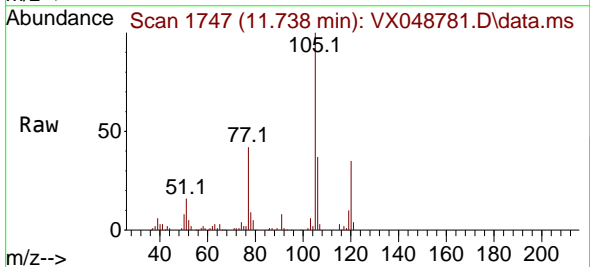
Instrument :  
 MSVOA\_X  
 ClientSampleId :  
 CHASE-E



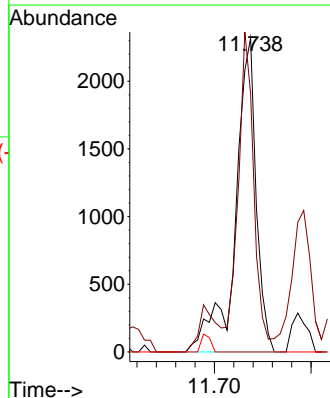
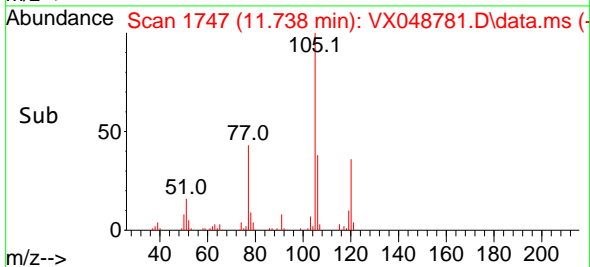
Tgt Ion: 75 Resp: 78135  
 Ion Ratio Lower Upper  
 75 100  
 53 0.0 79.9 119.9#  
 89 0.0 67.1 100.7#

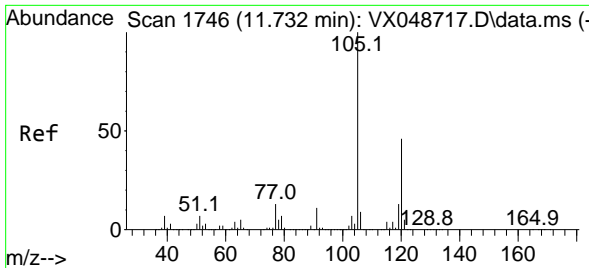


#83  
 tert-Butylbenzene  
 Concen: 0.333 ug/l  
 RT: 11.738 min Scan# 1747  
 Delta R.T. 0.042 min  
 Lab File: VX048781.D  
 Acq: 09 Dec 2025 14:07



Tgt Ion: 119 Resp: 3494  
 Ion Ratio Lower Upper  
 119 100  
 91 72.2 28.4 85.2  
 134 0.0 11.2 33.5#

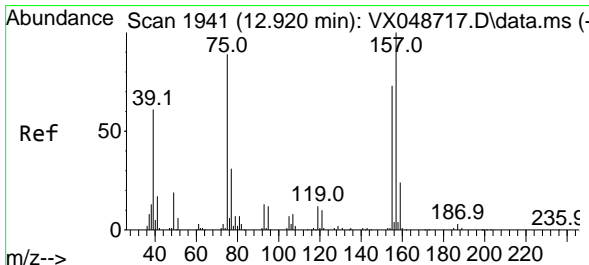
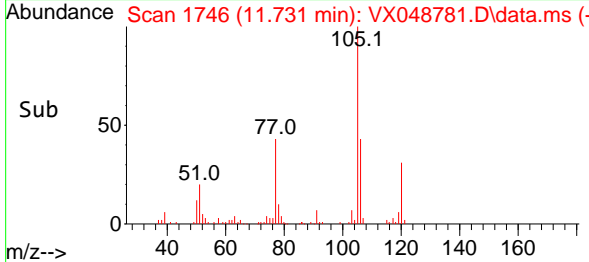
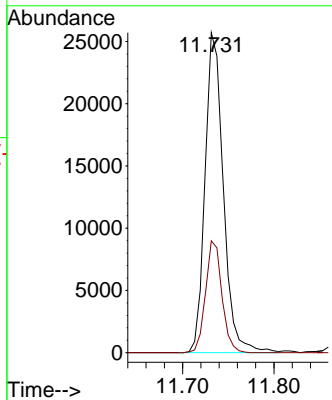
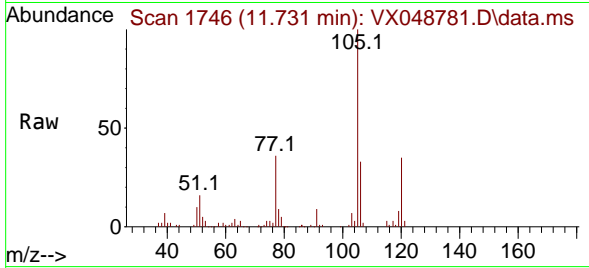




#84  
 1,2,4-Trimethylbenzene  
 Concen: 3.511 ug/l  
 RT: 11.731 min Scan# 11  
 Delta R.T. -0.000 min  
 Lab File: VX048781.D  
 Acq: 09 Dec 2025 14:07

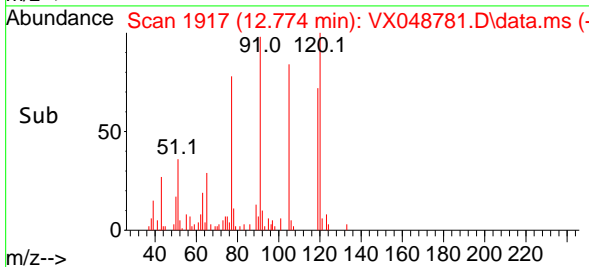
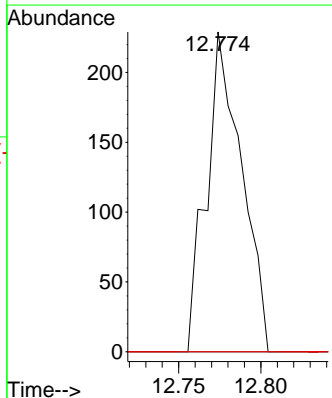
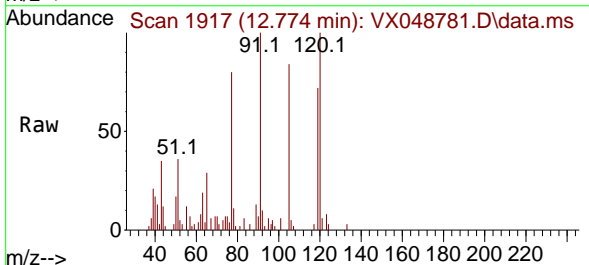
Instrument : MSVOA\_X  
 ClientSampleId : CHASE-E

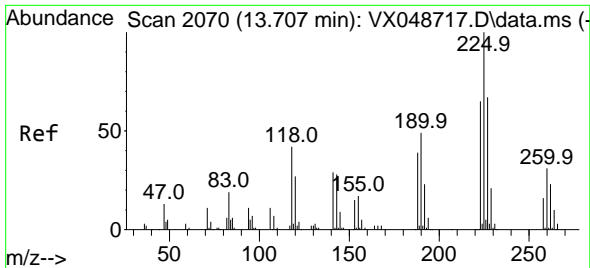
Tgt Ion: 105 Resp: 35785  
 Ion Ratio Lower Upper  
 105 100  
 120 31.2 22.3 66.8



#92  
 1,2-Dibromo-3-Chloropropane  
 Concen: 0.338 ug/l  
 RT: 12.774 min Scan# 1917  
 Delta R.T. -0.147 min  
 Lab File: VX048781.D  
 Acq: 09 Dec 2025 14:07

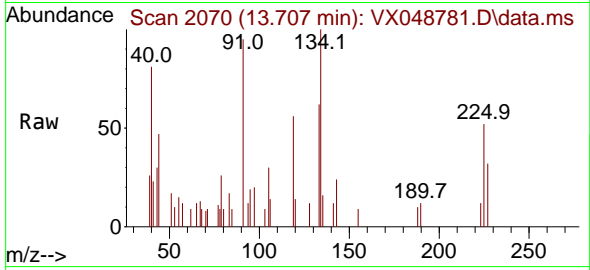
Tgt Ion: 75 Resp: 341  
 Ion Ratio Lower Upper  
 75 100  
 155 0.0 43.0 129.2#  
 157 0.0 56.0 168.2#





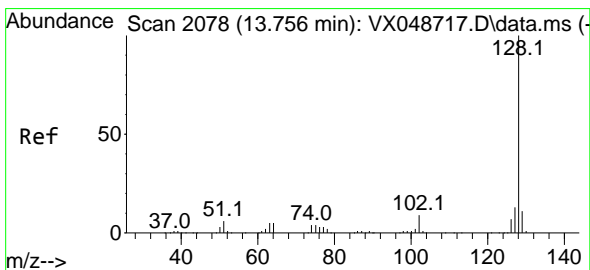
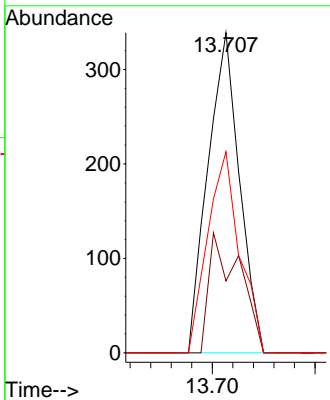
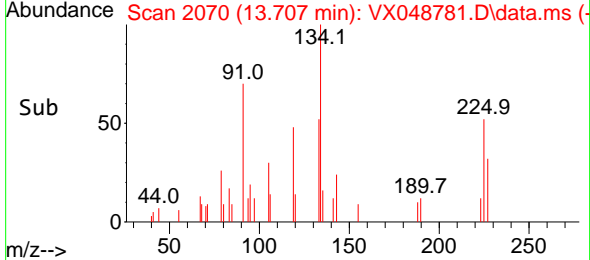
#94  
 Hexachlorobutadiene  
 Concen: 0.226 ug/l  
 RT: 13.707 min Scan# 2070  
 Delta R.T. -0.000 min  
 Lab File: VX048781.D  
 Acq: 09 Dec 2025 14:07

Instrument : MSVOA\_X  
 ClientSampleId : CHASE-E

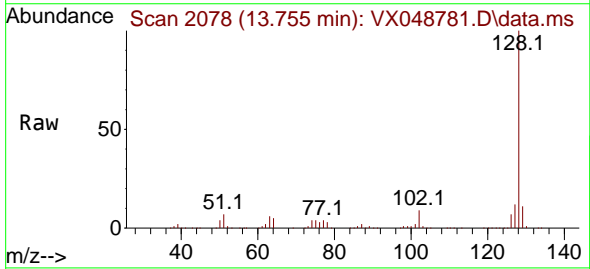


Tgt Ion: 225 Resp: 362

Ion	Ratio	Lower	Upper
225	100		
223	36.2	33.0	98.9
227	63.8	32.9	98.7



#95  
 Naphthalene  
 Concen: 26.757 ug/l  
 RT: 13.755 min Scan# 2078  
 Delta R.T. -0.000 min  
 Lab File: VX048781.D  
 Acq: 09 Dec 2025 14:07



Tgt Ion: 128 Resp: 273039

Ion	Ratio	Lower	Upper
128	100		
127	12.7	10.2	15.2
129	11.3	8.6	13.0

