

Data Path : Z:\voasrv\HPCHEM1\MSVOA_X\Data\VX120925\
 Data File : VX048782.D
 Acq On : 09 Dec 2025 14:27
 Operator : JC/MD
 Sample : Q3803-06
 Misc : 5.0mL/MSVOA_X/WATER
 ALS Vial : 16 Sample Multiplier: 1

Instrument :
 MSVOA_X
 ClientSampleId :
 CHASE-F

Quant Time: Dec 10 00:22:41 2025
 Quant Method : Z:\voasrv\HPCHEM1\MSVOA_X\Method\82X120425W.M
 Quant Title : SW846 8260
 QLast Update : Fri Dec 05 03:27:34 2025
 Response via : Initial Calibration

Compound	R.T.	QIon	Response	Conc	Units	Dev(Min)

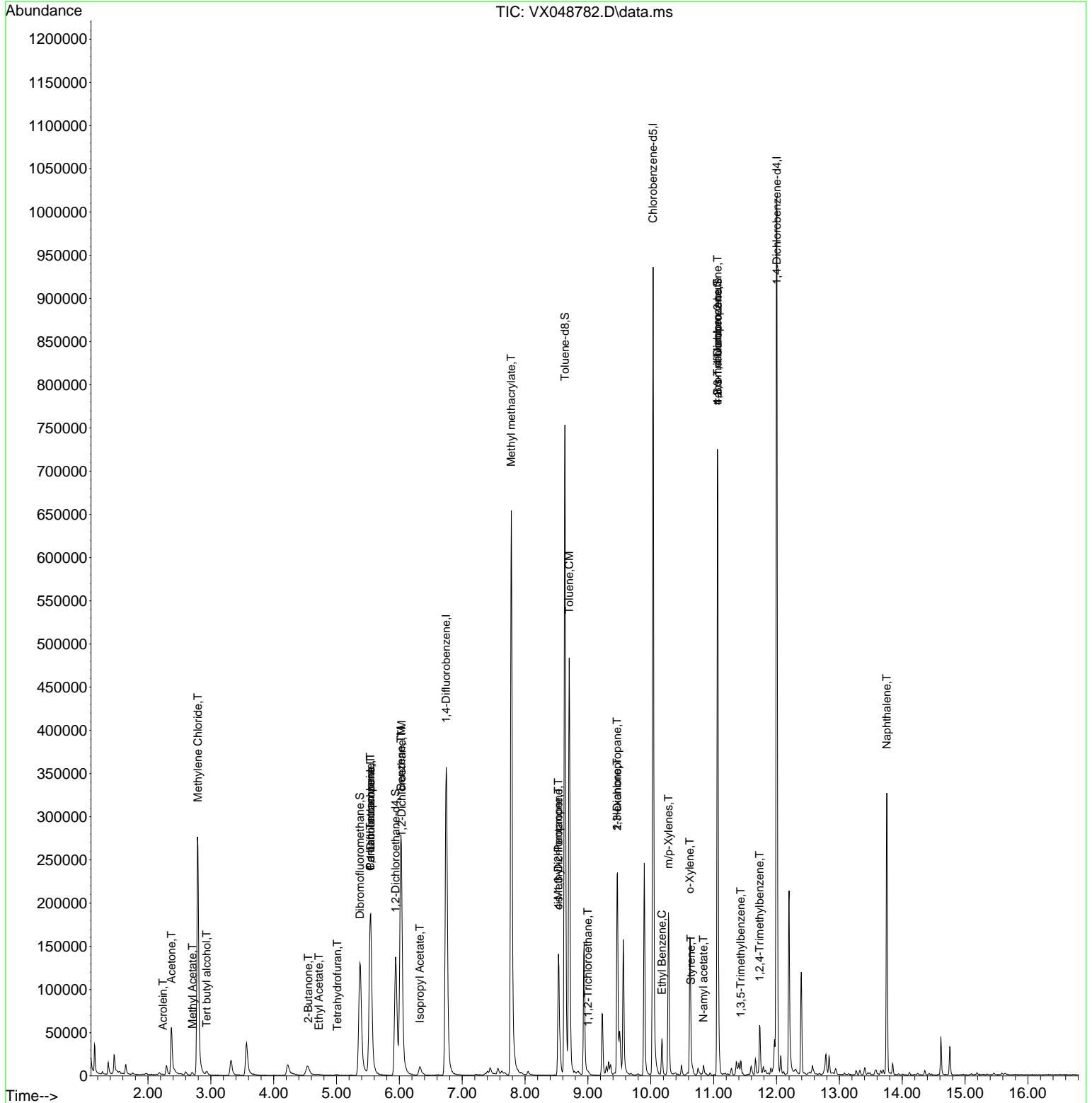
Internal Standards						
1) Pentafluorobenzene	5.544	168	201717	50.000	ug/l	0.00
34) 1,4-Difluorobenzene	6.745	114	411960	50.000	ug/l	0.00
63) Chlorobenzene-d5	10.037	117	436809	50.000	ug/l	0.00
72) 1,4-Dichlorobenzene-d4	12.006	152	231247	50.000	ug/l	0.00
System Monitoring Compounds						
33) 1,2-Dichloroethane-d4	5.940	65	148134	54.714	ug/l	0.00
Spiked Amount	50.000	Range	78 - 117	Recovery	=	109.420%
35) Dibromofluoromethane	5.373	113	131620	46.402	ug/l	0.00
Spiked Amount	50.000	Range	75 - 124	Recovery	=	92.800%
50) Toluene-d8	8.635	98	477886	48.063	ug/l	0.00
Spiked Amount	50.000	Range	92 - 112	Recovery	=	96.120%
62) 4-Bromofluorobenzene	11.061	95	206772	60.308	ug/l	0.00
Spiked Amount	50.000	Range	83 - 123	Recovery	=	120.620%
Target Compounds						
						Qvalue
11) Tert butyl alcohol	2.934	59	4160	9.517	ug/l #	93
13) Acrolein	2.239	56	364	40.901	ug/l #	1
16) Acetone	2.373	43	77452	74.728	ug/l	96
18) Methyl Acetate	2.709	43	4740	1.625	ug/l	94
20) Methylene Chloride	2.794	84	144175	55.652	ug/l	98
25) 2-Butanone	4.550	43	10536	6.888	ug/l	93
29) Tetrahydrofuran	5.013	42	612	0.524	ug/l #	36
36) 1,1-Dichloropropene	5.544	75	15282	3.934	ug/l #	48
37) Ethyl Acetate	4.721	43	2745	0.591	ug/l #	78
38) Carbon Tetrachloride	5.538	117	20355	4.626	ug/l #	13
40) Benzene	6.025	78	371382	32.247	ug/l	99
42) 1,2-Dichloroethane	6.037	62	3278	0.804	ug/l #	73
43) Isopropyl Acetate	6.324	43	16047	2.283	ug/l	95
48) Methyl methacrylate	7.781	41	61221	17.314	ug/l #	41
51) 4-Methyl-2-Pentanone	8.531	43	62344	14.289	ug/l #	35
52) Toluene	8.702	92	193241	27.825	ug/l	99
54) cis-1,3-Dichloropropene	8.531	75	24750	5.319	ug/l #	59
55) 1,1,2-Trichloroethane	9.000	97	1326	0.475	ug/l #	20
57) 1,3-Dichloropropane	9.464	76	2115	0.455	ug/l #	42
59) 2-Hexanone	9.464	43	28577	9.330	ug/l #	49
67) Ethyl Benzene	10.177	91	25591	1.640	ug/l	99
68) m/p-Xylenes	10.281	106	45171	7.433	ug/l	95
69) o-Xylene	10.622	106	31904	5.602	ug/l	97
70) Styrene	10.640	104	10975	1.123	ug/l #	62
74) N-ethyl acetate	10.835	43	2599	0.384	ug/l #	33
76) 1,2,3-Trichloropropane	11.061	75	102833	23.876	ug/l #	30
80) 1,3,5-Trimethylbenzene	11.433	105	7079	0.553	ug/l	96
81) trans-1,4-Dichloro-2-b...	11.061	75	102833	56.714	ug/l #	3
84) 1,2,4-Trimethylbenzene	11.732	105	24619	1.905	ug/l	82
95) Naphthalene	13.756	128	203178	15.691	ug/l	100

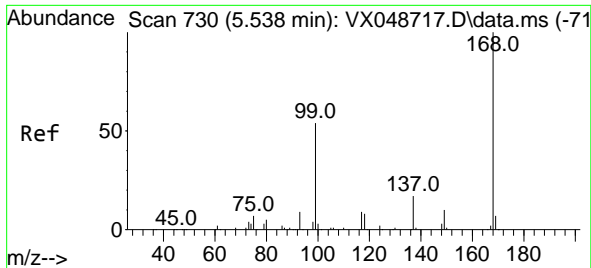
(#) = qualifier out of range (m) = manual integration (+) = signals summed

Data Path : Z:\voasrv\HPCHEM1\MSVOA_X\Data\VX120925\
 Data File : VX048782.D
 Acq On : 09 Dec 2025 14:27
 Operator : JC/MD
 Sample : Q3803-06
 Misc : 5.0mL/MSVOA_X/WATER
 ALS Vial : 16 Sample Multiplier: 1

Instrument :
 MSVOA_X
 ClientSampleId :
 CHASE-F

Quant Time: Dec 10 00:22:41 2025
 Quant Method : Z:\voasrv\HPCHEM1\MSVOA_X\Method\82X120425W.M
 Quant Title : SW846 8260
 QLast Update : Fri Dec 05 03:27:34 2025
 Response via : Initial Calibration

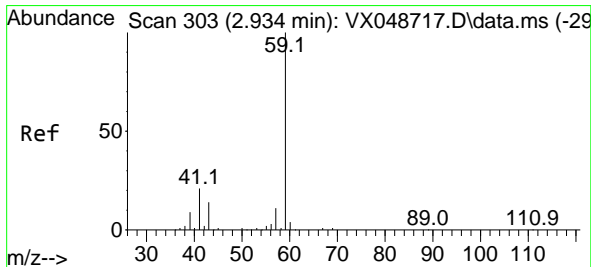
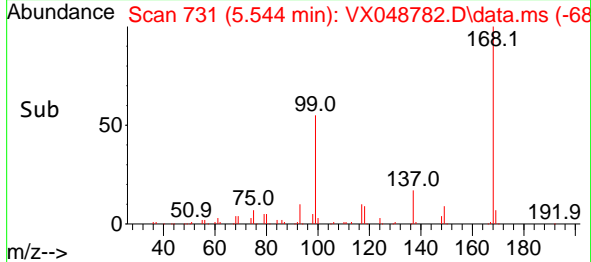
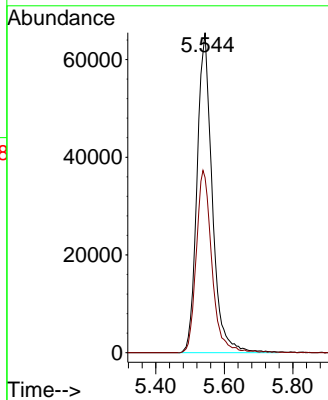
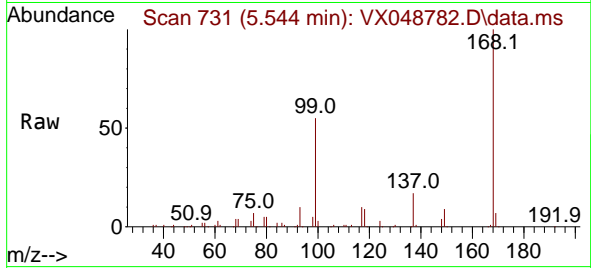




#1
 Pentafluorobenzene
 Concen: 50.000 ug/l
 RT: 5.544 min Scan# 71
 Delta R.T. 0.006 min
 Lab File: VX048782.D
 Acq: 09 Dec 2025 14:27

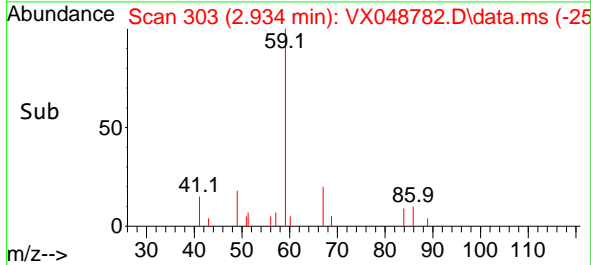
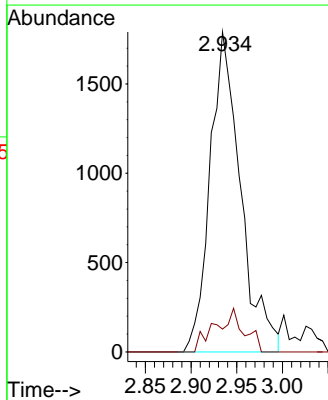
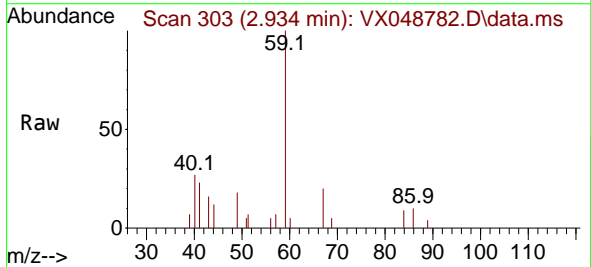
Instrument :
 MSVOA_X
 ClientSampleId :
 CHASE-F

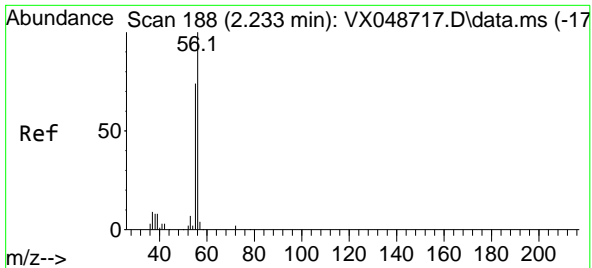
Tgt Ion:168 Resp: 201717
 Ion Ratio Lower Upper
 168 100
 99 54.7 44.2 66.4



#11
 Tert butyl alcohol
 Concen: 9.517 ug/l
 RT: 2.934 min Scan# 303
 Delta R.T. -0.000 min
 Lab File: VX048782.D
 Acq: 09 Dec 2025 14:27

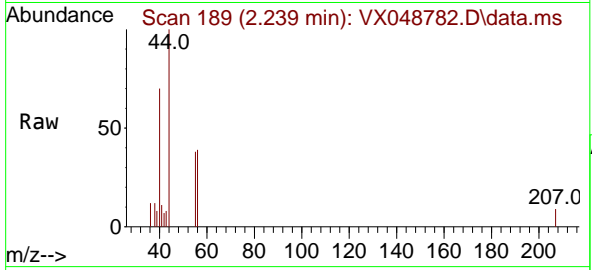
Tgt Ion: 59 Resp: 4160
 Ion Ratio Lower Upper
 59 100
 57 12.7 8.1 12.1#



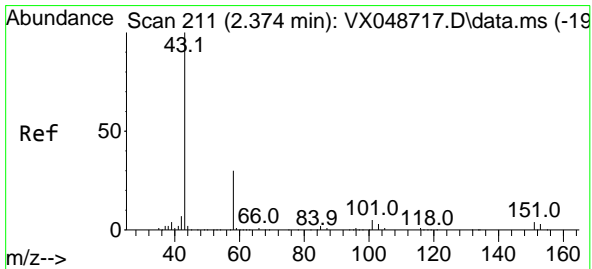
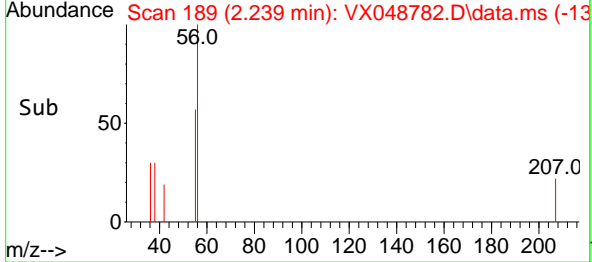
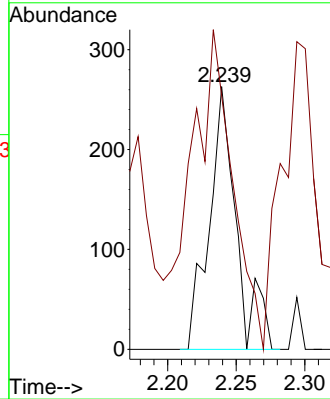


#13
 Acrolein
 Concen: 40.901 ug/l
 RT: 2.239 min Scan# 189
 Delta R.T. 0.006 min
 Lab File: VX048782.D
 Acq: 09 Dec 2025 14:27

Instrument : MSVOA_X
 ClientSampleId : CHASE-F

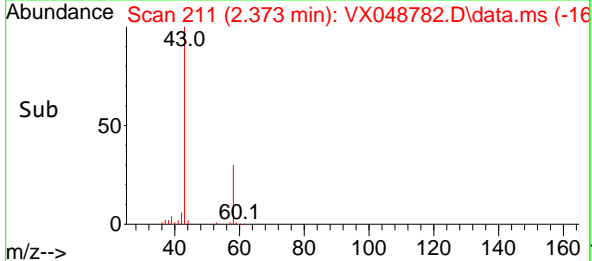
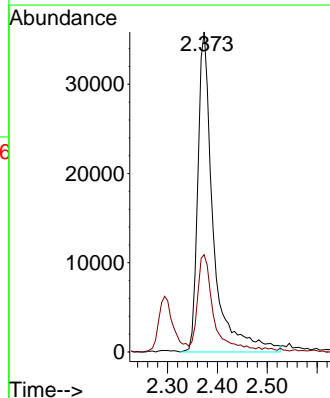
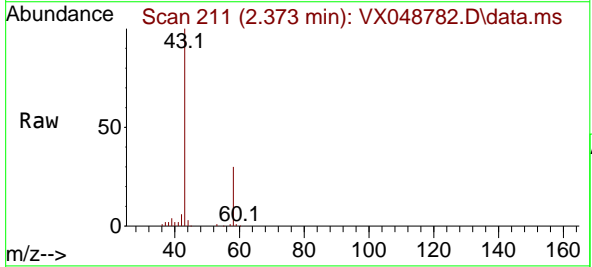


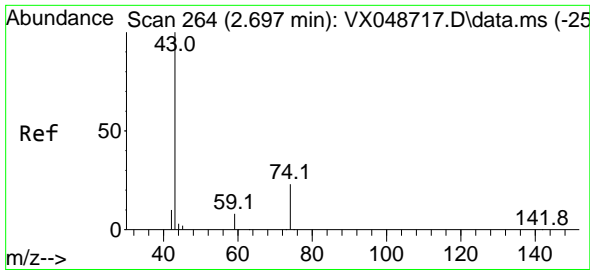
Tgt Ion: 56 Resp: 364
 Ion Ratio Lower Upper
 56 100
 55 182.1 55.8 83.6#



#16
 Acetone
 Concen: 74.728 ug/l
 RT: 2.373 min Scan# 211
 Delta R.T. -0.000 min
 Lab File: VX048782.D
 Acq: 09 Dec 2025 14:27

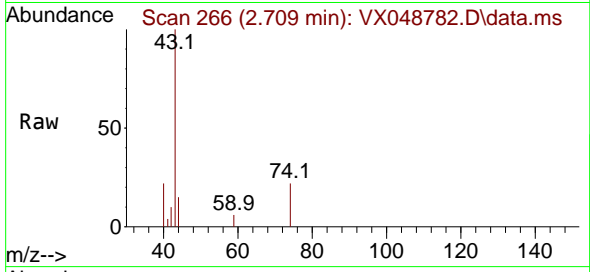
Tgt Ion: 43 Resp: 77452
 Ion Ratio Lower Upper
 43 100
 58 29.2 25.0 37.4



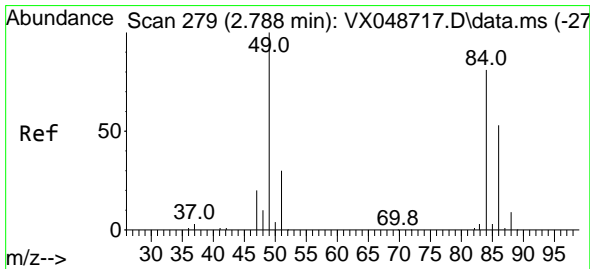
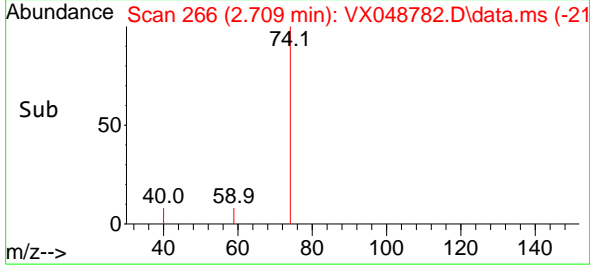
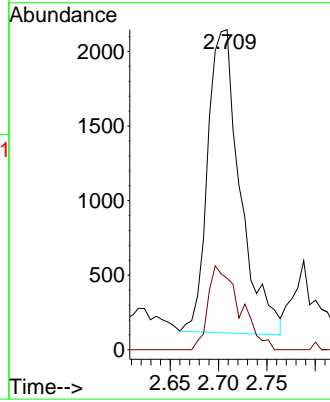


#18
 Methyl Acetate
 Concen: 1.625 ug/l
 RT: 2.709 min Scan# 20
 Delta R.T. 0.012 min
 Lab File: VX048782.D
 Acq: 09 Dec 2025 14:27

Instrument :
 MSVOA_X
 ClientSampleId :
 CHASE-F

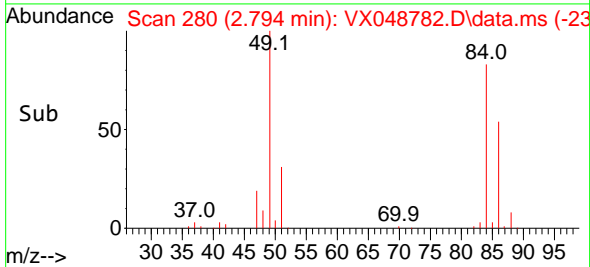
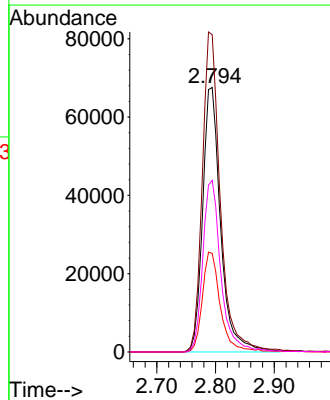
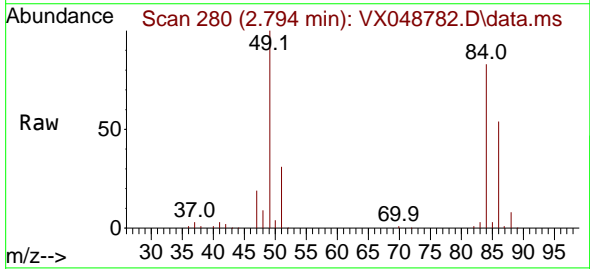


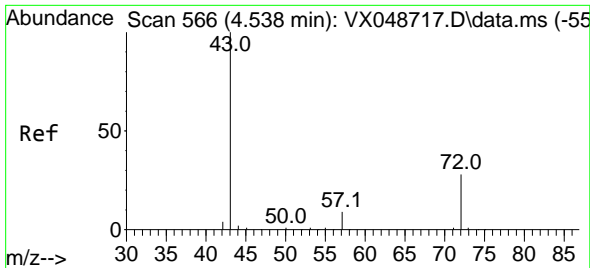
Tgt Ion: 43 Resp: 4740
 Ion Ratio Lower Upper
 43 100
 74 27.1 19.2 28.8



#20
 Methylene Chloride
 Concen: 55.652 ug/l
 RT: 2.794 min Scan# 280
 Delta R.T. 0.006 min
 Lab File: VX048782.D
 Acq: 09 Dec 2025 14:27

Tgt Ion: 84 Resp: 144175
 Ion Ratio Lower Upper
 84 100
 49 119.9 98.7 148.1
 51 37.3 29.4 44.2
 86 64.8 52.5 78.7

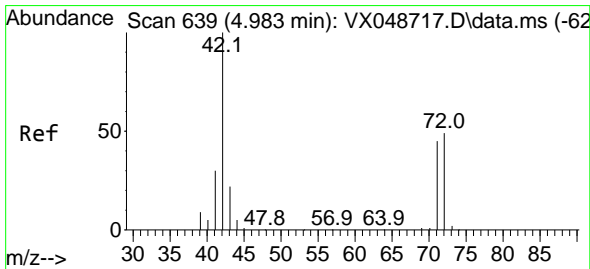
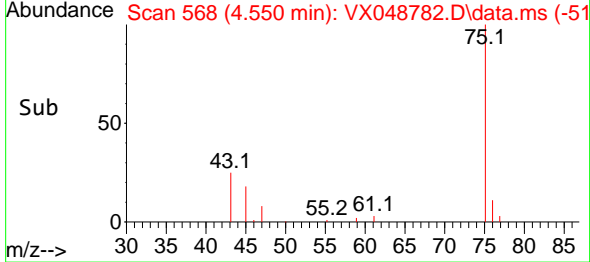
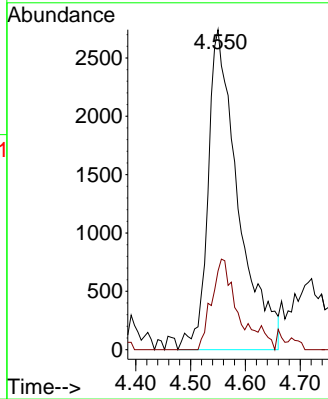
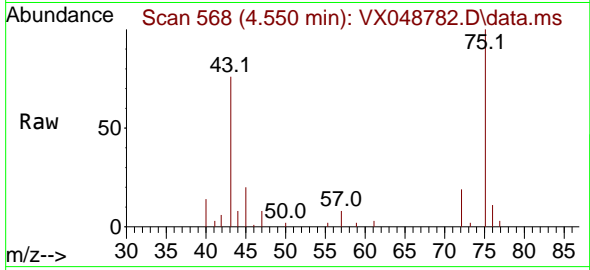




#25
 2-Butanone
 Concen: 6.888 ug/l
 RT: 4.550 min Scan# 50
 Delta R.T. 0.012 min
 Lab File: VX048782.D
 Acq: 09 Dec 2025 14:27

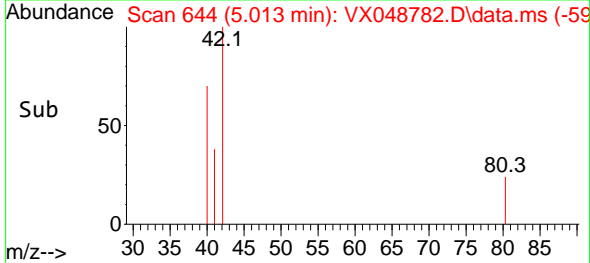
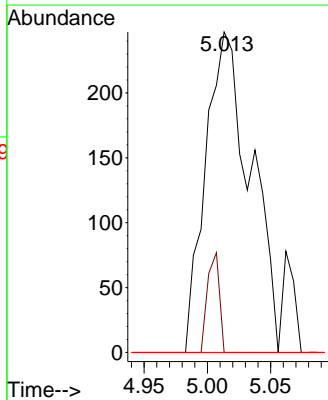
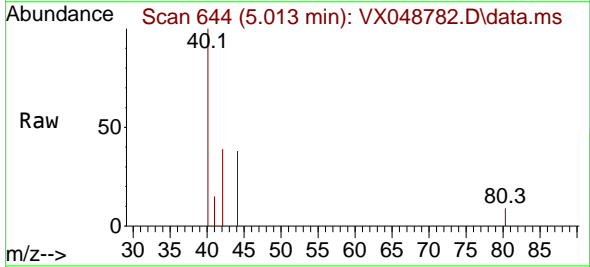
Instrument :
 MSVOA_X
 Client Sample Id :
 CHASE-F

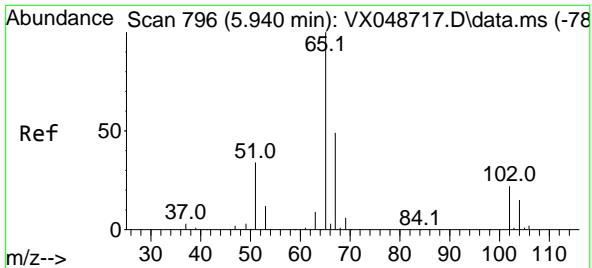
Tgt Ion: 43 Resp: 10536
 Ion Ratio Lower Upper
 43 100
 72 24.6 22.6 34.0



#29
 Tetrahydrofuran
 Concen: 0.524 ug/l
 RT: 5.013 min Scan# 644
 Delta R.T. 0.030 min
 Lab File: VX048782.D
 Acq: 09 Dec 2025 14:27

Tgt Ion: 42 Resp: 612
 Ion Ratio Lower Upper
 42 100
 72 8.2 39.4 59.2#
 71 0.0 35.8 53.6#

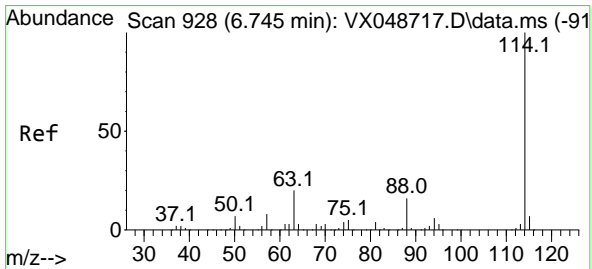
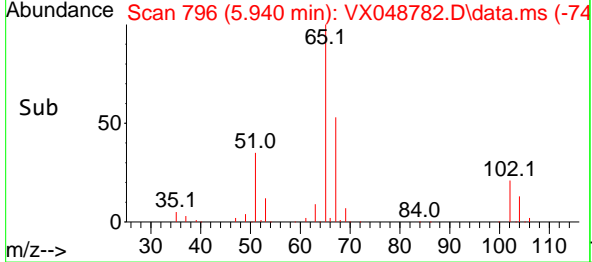
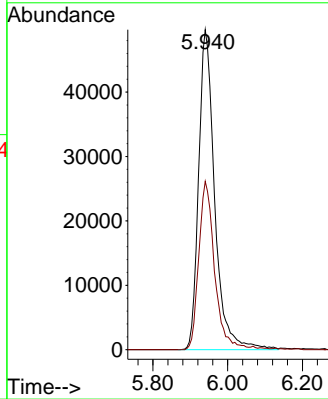
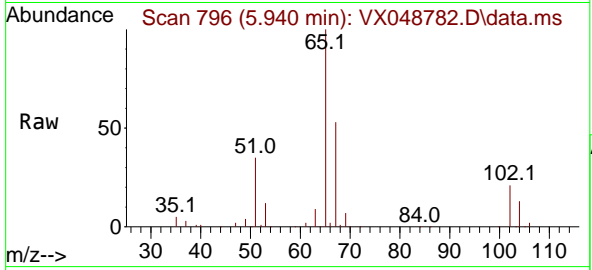




#33
 1,2-Dichloroethane-d4
 Concen: 54.714 ug/l
 RT: 5.940 min Scan# 796
 Delta R.T. -0.000 min
 Lab File: VX048782.D
 Acq: 09 Dec 2025 14:27

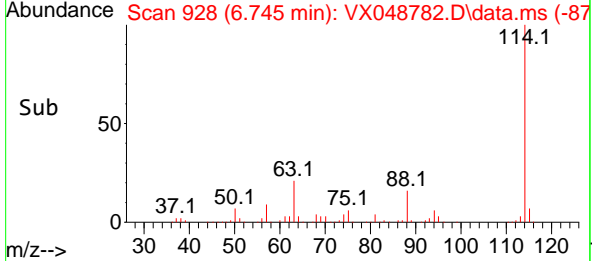
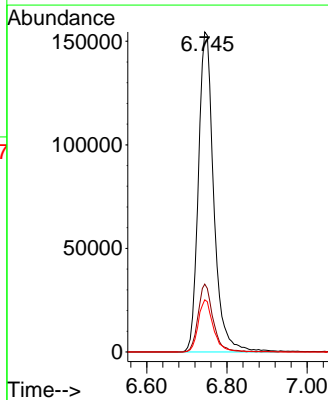
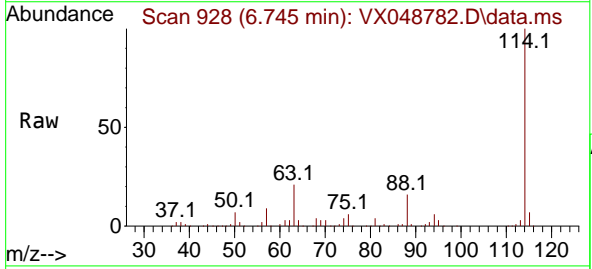
Instrument : MSVOA_X
 ClientSampleId : CHASE-F

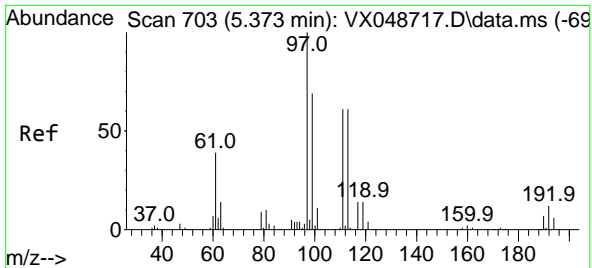
Tgt Ion: 65 Resp: 148134
 Ion Ratio Lower Upper
 65 100
 67 51.6 0.0 107.4



#34
 1,4-Difluorobenzene
 Concen: 50.000 ug/l
 RT: 6.745 min Scan# 928
 Delta R.T. -0.000 min
 Lab File: VX048782.D
 Acq: 09 Dec 2025 14:27

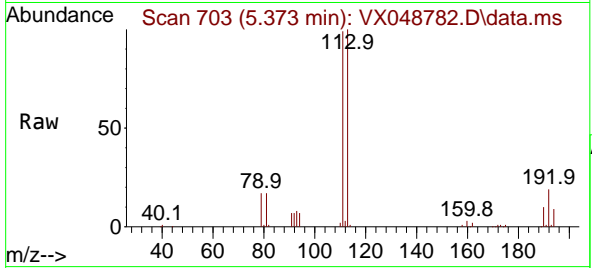
Tgt Ion: 114 Resp: 411960
 Ion Ratio Lower Upper
 114 100
 63 21.2 0.0 39.0
 88 16.3 0.0 31.8



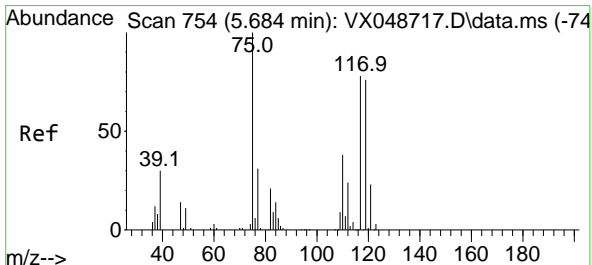
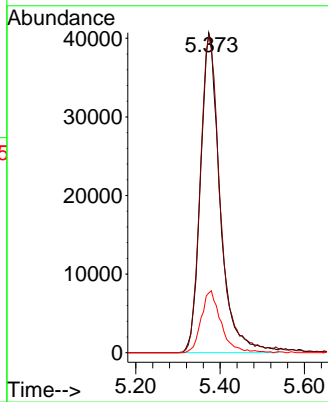
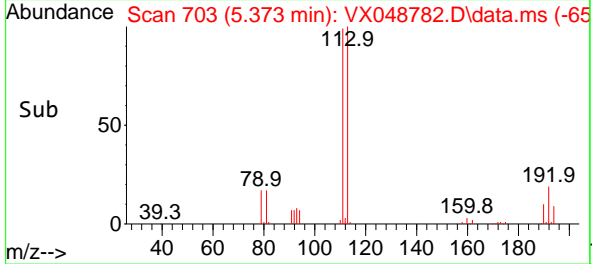


#35
 Dibromofluoromethane
 Concen: 46.402 ug/l
 RT: 5.373 min Scan# 703
 Delta R.T. -0.000 min
 Lab File: VX048782.D
 Acq: 09 Dec 2025 14:27

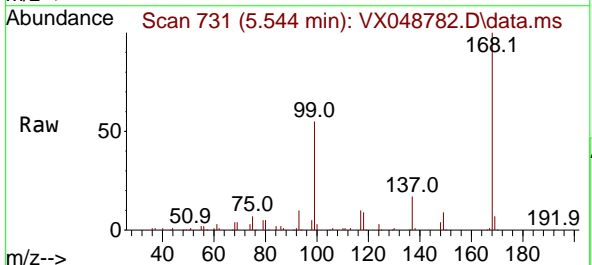
Instrument : MSVOA_X
 ClientSampleId : CHASE-F



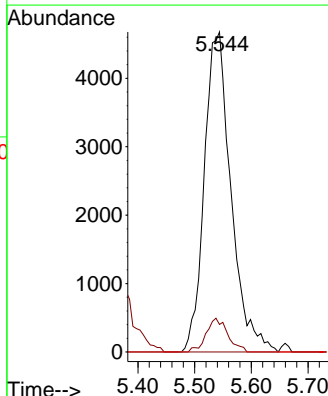
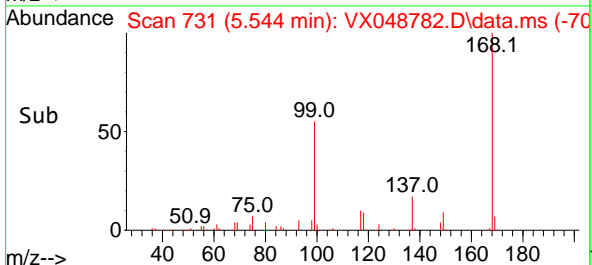
Tgt Ion: 113 Resp: 131620
 Ion Ratio Lower Upper
 113 100
 111 101.3 79.5 119.3
 192 19.6 16.1 24.1

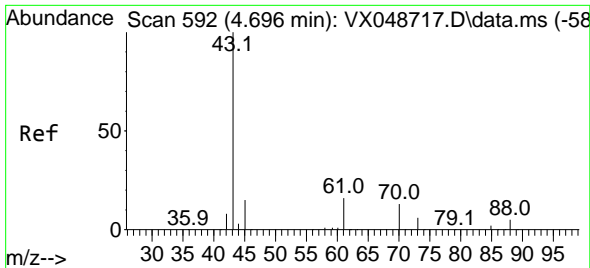


#36
 1,1-Dichloropropene
 Concen: 3.934 ug/l
 RT: 5.544 min Scan# 731
 Delta R.T. -0.140 min
 Lab File: VX048782.D
 Acq: 09 Dec 2025 14:27



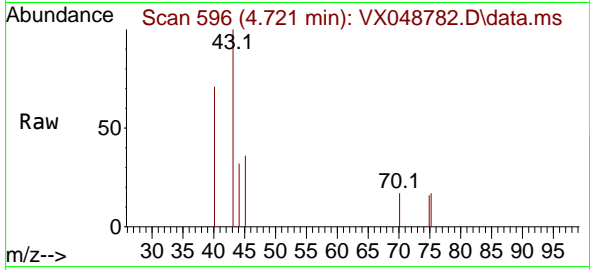
Tgt Ion: 75 Resp: 15282
 Ion Ratio Lower Upper
 75 100
 110 8.5 18.6 55.8#
 77 0.0 25.3 37.9#





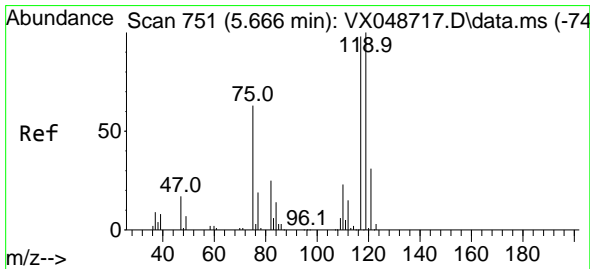
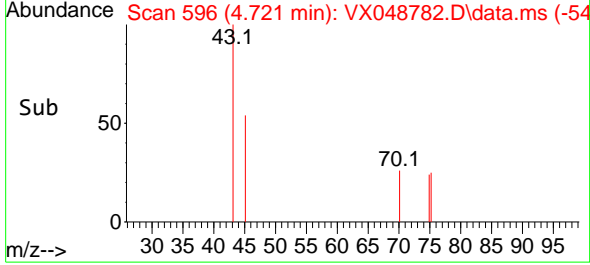
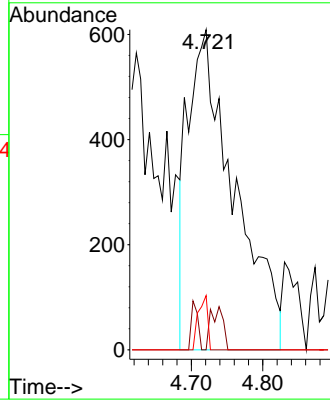
#37
 Ethyl Acetate
 Concen: 0.591 ug/l
 RT: 4.721 min Scan# 51
 Delta R.T. 0.024 min
 Lab File: VX048782.D
 Acq: 09 Dec 2025 14:27

Instrument :
 MSVOA_X
 ClientSampleId :
 CHASE-F



Tgt Ion: 43 Resp: 2745

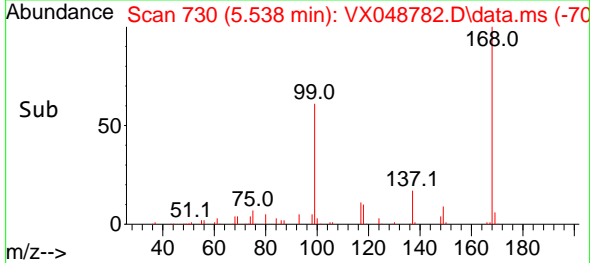
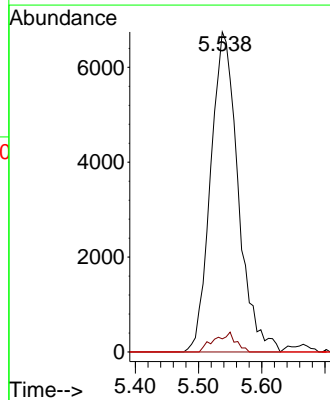
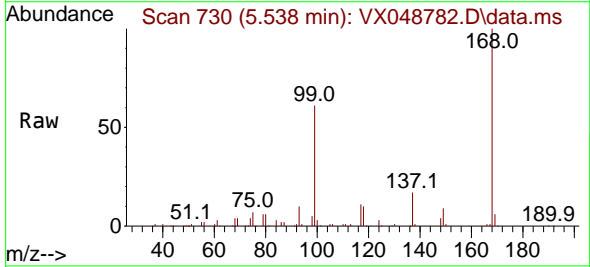
Ion	Ratio	Lower	Upper
43	100		
61	2.1	9.7	14.5#
70	3.4	8.2	12.4#

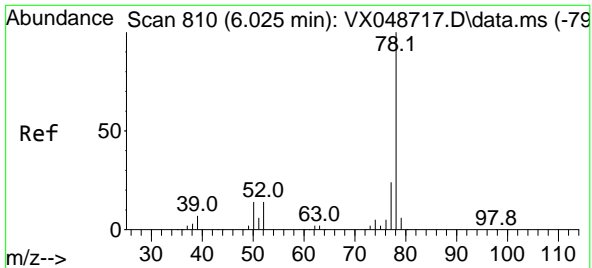


#38
 Carbon Tetrachloride
 Concen: 4.626 ug/l
 RT: 5.538 min Scan# 730
 Delta R.T. -0.128 min
 Lab File: VX048782.D
 Acq: 09 Dec 2025 14:27

Tgt Ion: 117 Resp: 20355

Ion	Ratio	Lower	Upper
117	100		
119	4.1	80.5	120.7#
121	0.0	25.4	38.0#

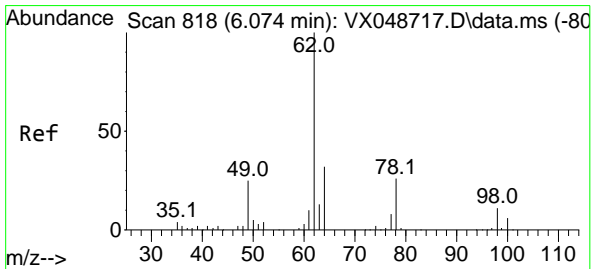
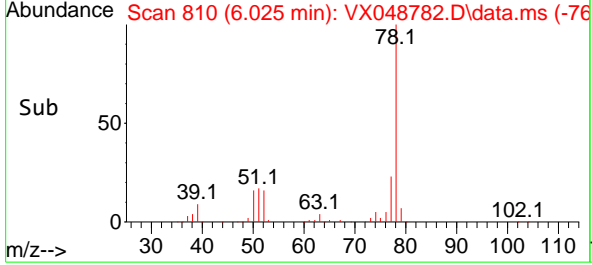
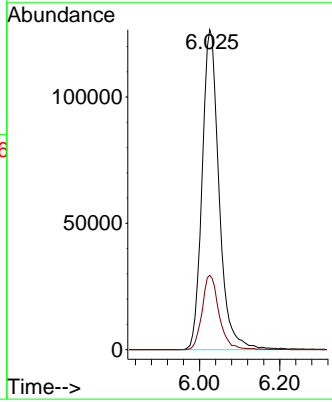
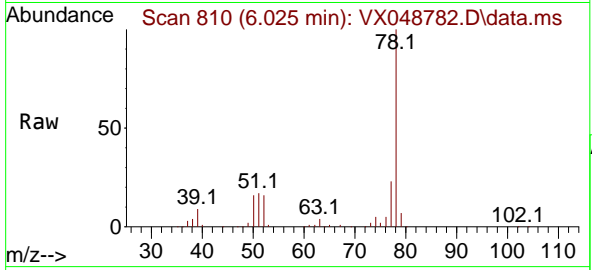




#40
Benzene
Concen: 32.247 ug/l
RT: 6.025 min Scan# 810
Delta R.T. -0.000 min
Lab File: VX048782.D
Acq: 09 Dec 2025 14:27

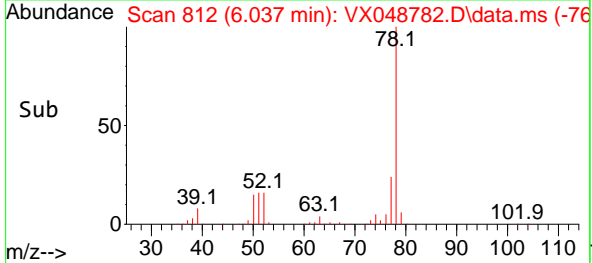
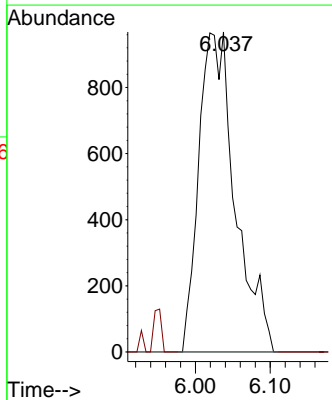
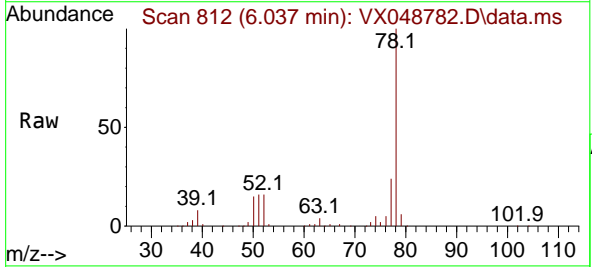
Instrument : MSVOA_X
ClientSampleId : CHASE-F

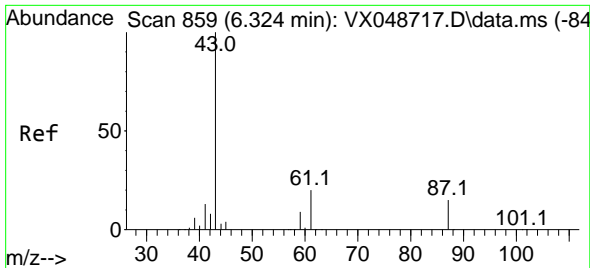
Tgt Ion: 78 Resp: 371382
Ion Ratio Lower Upper
78 100
77 23.2 18.8 28.2



#42
1,2-Dichloroethane
Concen: 0.804 ug/l
RT: 6.037 min Scan# 812
Delta R.T. -0.037 min
Lab File: VX048782.D
Acq: 09 Dec 2025 14:27

Tgt Ion: 62 Resp: 3278
Ion Ratio Lower Upper
62 100
98 0.0 0.0 20.2

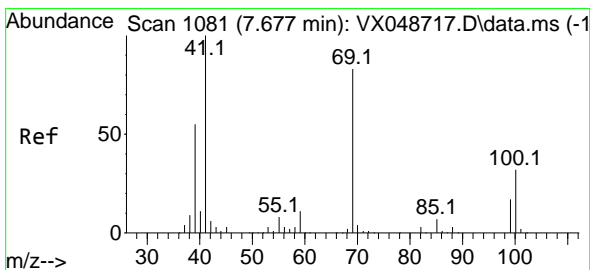
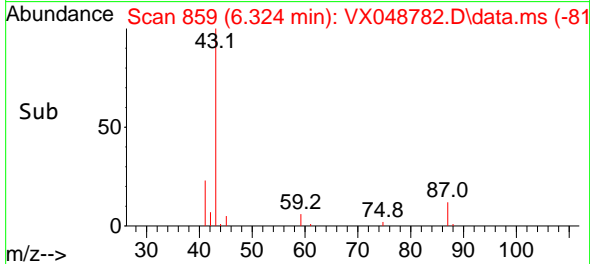
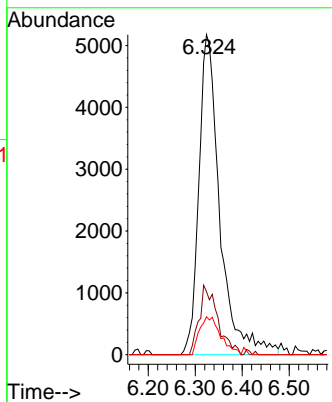
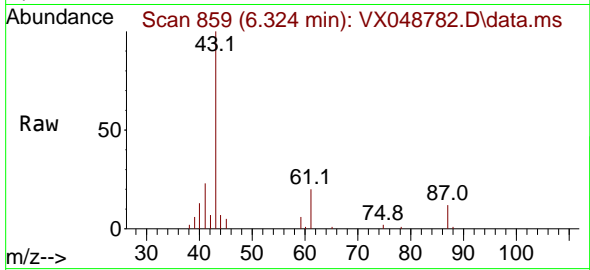




#43
 Isopropyl Acetate
 Concen: 2.283 ug/l
 RT: 6.324 min Scan# 81
 Delta R.T. -0.000 min
 Lab File: VX048782.D
 Acq: 09 Dec 2025 14:27

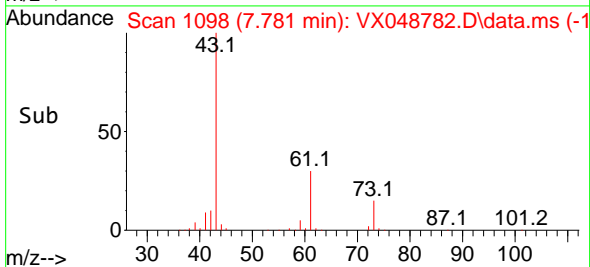
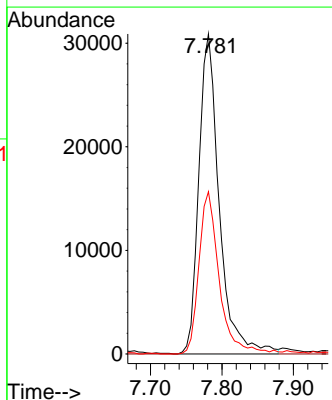
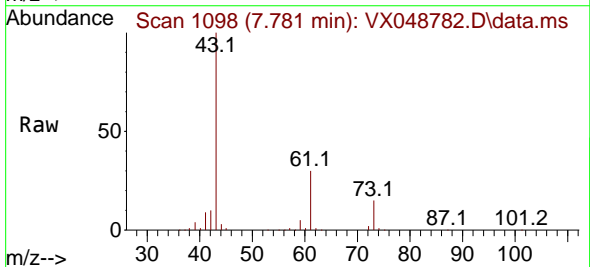
Instrument :
 MSVOA_X
 ClientSampleId :
 CHASE-F

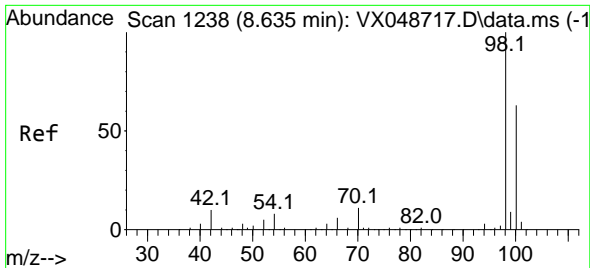
Tgt Ion	Resp	Lower	Upper
43	16047		
61	19.2	16.8	25.2
87	11.9	11.8	17.6



#48
 Methyl methacrylate
 Concen: 17.314 ug/l
 RT: 7.781 min Scan# 1098
 Delta R.T. 0.104 min
 Lab File: VX048782.D
 Acq: 09 Dec 2025 14:27

Tgt Ion	Resp	Lower	Upper
41	61221		
69	0.0	68.5	102.7#
39	50.6	43.5	65.3

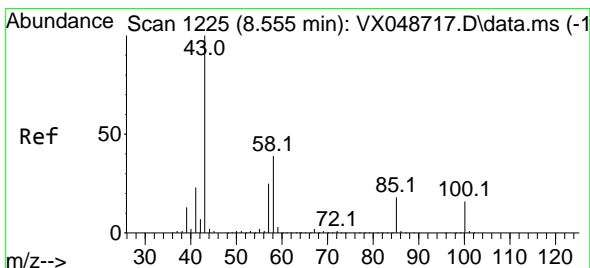
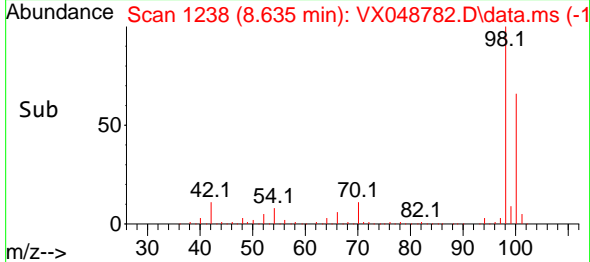
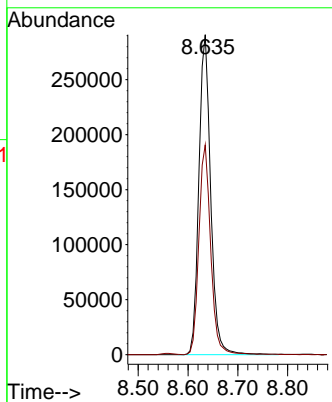
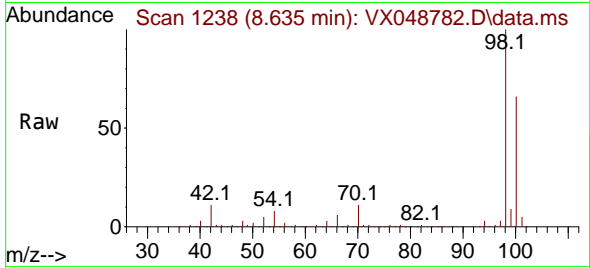




#50
 Toluene-d8
 Concen: 48.063 ug/l
 RT: 8.635 min Scan# 11
 Delta R.T. -0.000 min
 Lab File: VX048782.D
 Acq: 09 Dec 2025 14:27

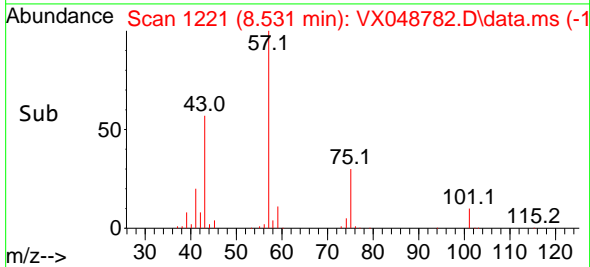
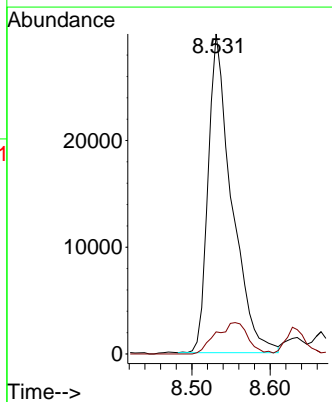
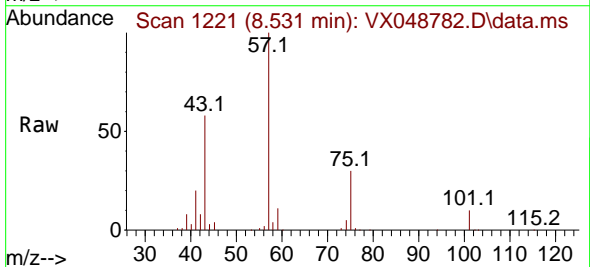
Instrument :
 MSVOA_X
 ClientSampleId :
 CHASE-F

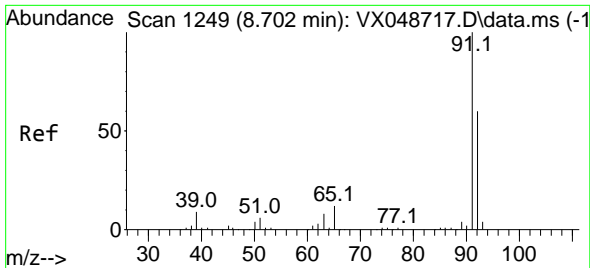
Tgt Ion: 98 Resp: 477886
 Ion Ratio Lower Upper
 98 100
 100 65.5 53.4 80.0



#51
 4-Methyl-2-Pentanone
 Concen: 14.289 ug/l
 RT: 8.531 min Scan# 1221
 Delta R.T. -0.024 min
 Lab File: VX048782.D
 Acq: 09 Dec 2025 14:27

Tgt Ion: 43 Resp: 62344
 Ion Ratio Lower Upper
 43 100
 58 0.0 32.2 48.4#

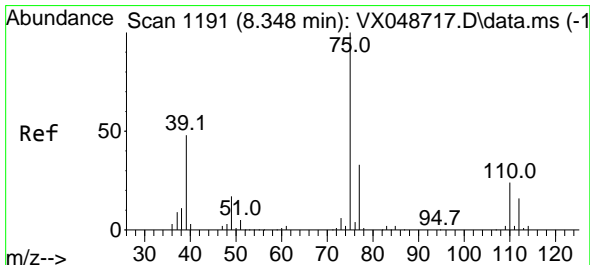
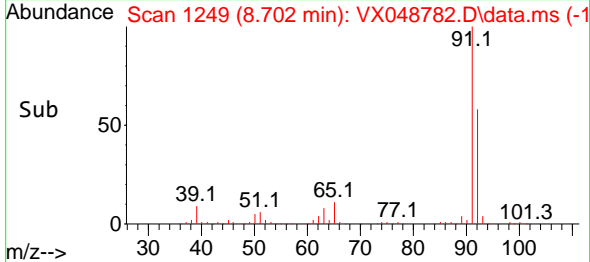
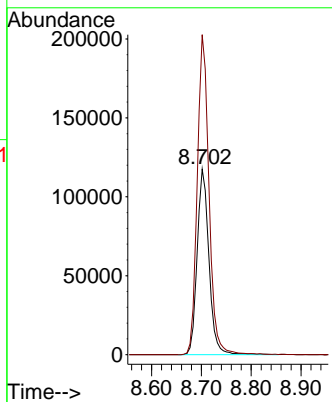
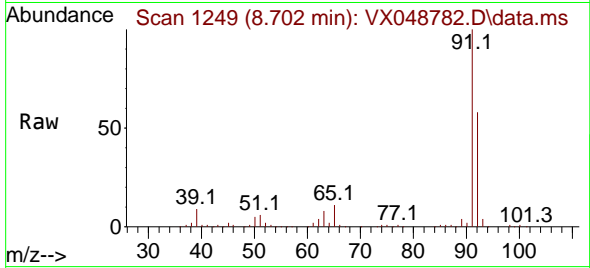




#52
 Toluene
 Concen: 27.825 ug/l
 RT: 8.702 min Scan# 11
 Delta R.T. -0.000 min
 Lab File: VX048782.D
 Acq: 09 Dec 2025 14:27

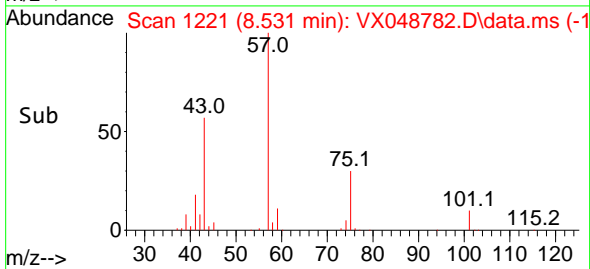
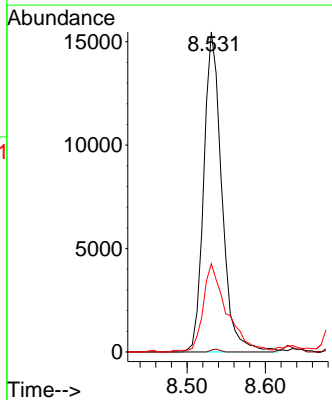
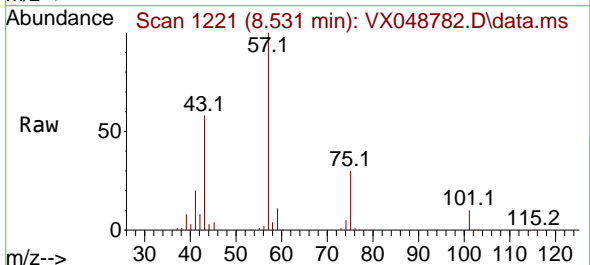
Instrument :
 MSVOA_X
 ClientSampleId :
 CHASE-F

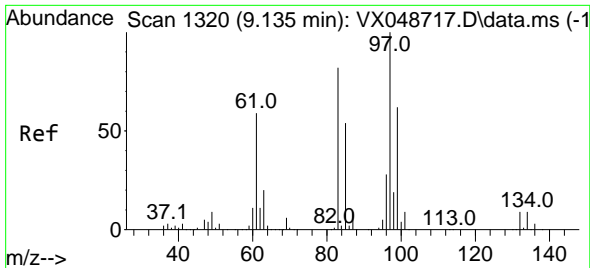
Tgt Ion: 92 Resp: 193241
 Ion Ratio Lower Upper
 92 100
 91 171.3 136.3 204.5



#54
 cis-1,3-Dichloropropene
 Concen: 5.319 ug/l
 RT: 8.531 min Scan# 1221
 Delta R.T. 0.183 min
 Lab File: VX048782.D
 Acq: 09 Dec 2025 14:27

Tgt Ion: 75 Resp: 24750
 Ion Ratio Lower Upper
 75 100
 77 0.6 26.1 39.1#
 39 27.1 38.2 57.4#

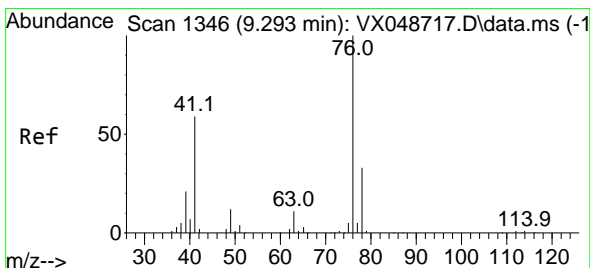
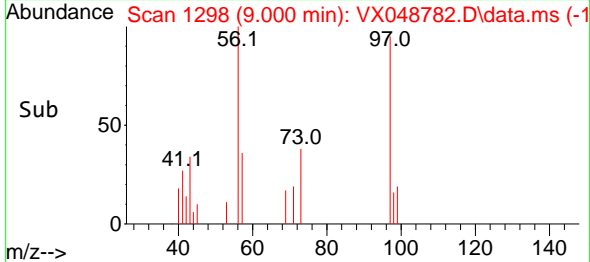
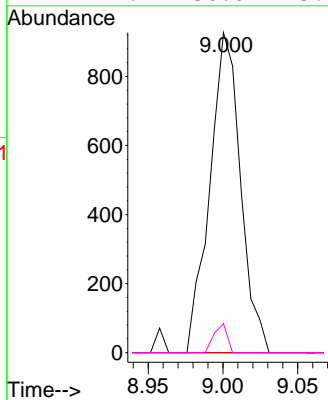
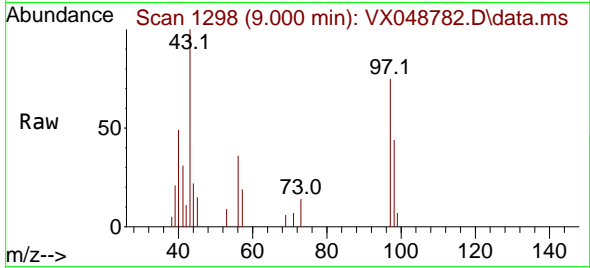




#55
 1,1,2-Trichloroethane
 Concen: 0.475 ug/l
 RT: 9.000 min Scan# 1326
 Delta R.T. -0.134 min
 Lab File: VX048782.D
 Acq: 09 Dec 2025 14:27

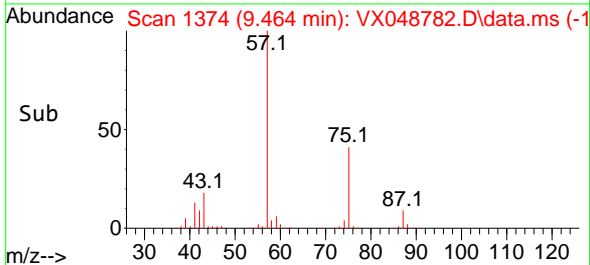
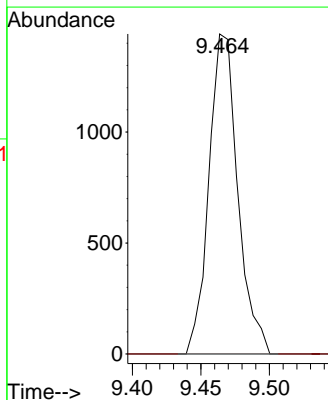
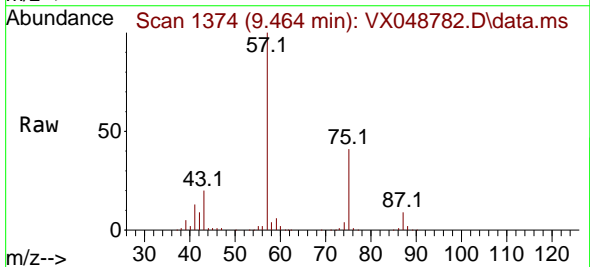
Instrument : MSVOA_X
 ClientSampleId : CHASE-F

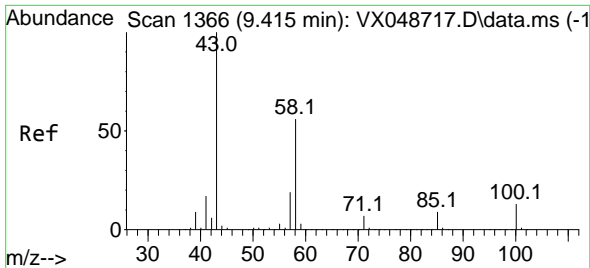
Tgt Ion	Resp	Lower	Upper
97	100		
83	0.0	66.0	99.0#
85	0.0	43.2	64.8#
99	9.1	50.0	75.0#



#57
 1,3-Dichloropropane
 Concen: 0.455 ug/l
 RT: 9.464 min Scan# 1374
 Delta R.T. 0.171 min
 Lab File: VX048782.D
 Acq: 09 Dec 2025 14:27

Tgt Ion	Resp	Lower	Upper
76	100		
78	0.0	26.0	39.0#

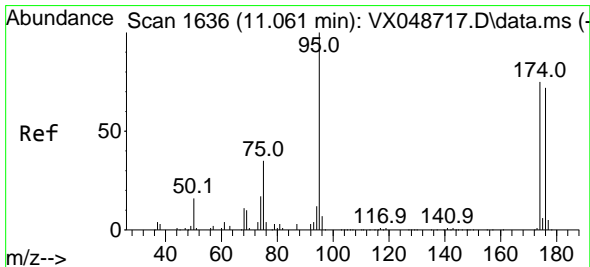
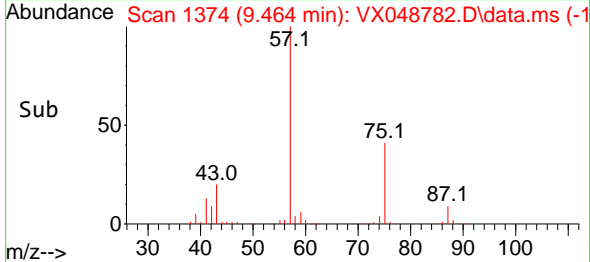
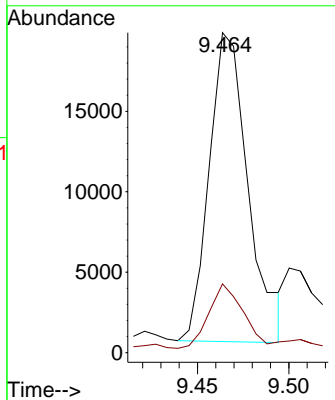
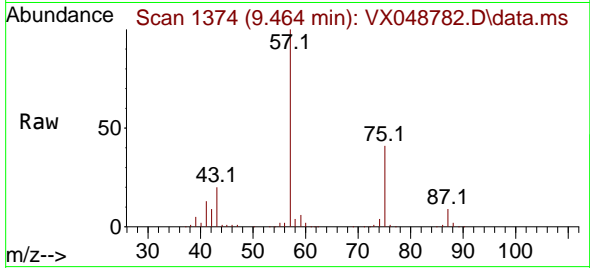




#59
 2-Hexanone
 Concen: 9.330 ug/l
 RT: 9.464 min Scan# 11
 Delta R.T. 0.049 min
 Lab File: VX048782.D
 Acq: 09 Dec 2025 14:27

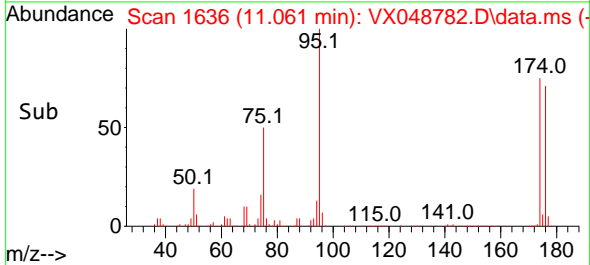
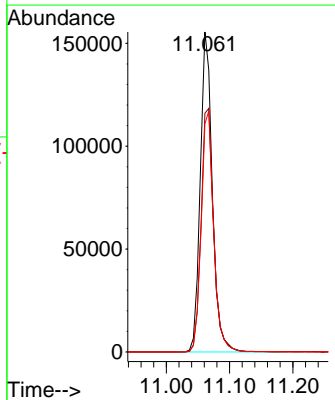
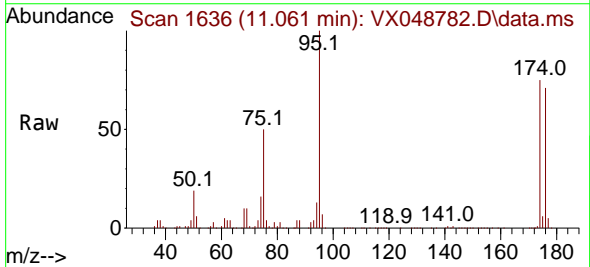
Instrument :
 MSVOA_X
 ClientSampleId :
 CHASE-F

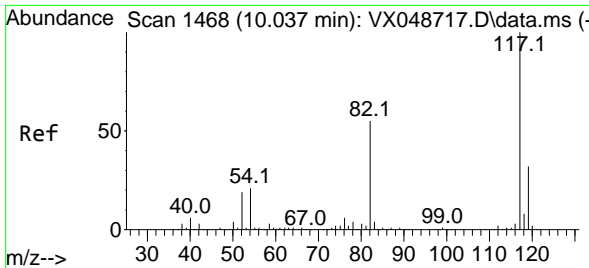
Tgt Ion: 43 Resp: 28577
 Ion Ratio Lower Upper
 43 100
 58 18.8 27.8 83.4#



#62
 4-Bromofluorobenzene
 Concen: 60.308 ug/l
 RT: 11.061 min Scan# 1636
 Delta R.T. -0.000 min
 Lab File: VX048782.D
 Acq: 09 Dec 2025 14:27

Tgt Ion: 95 Resp: 206772
 Ion Ratio Lower Upper
 95 100
 174 79.3 0.0 157.8
 176 77.4 0.0 154.0



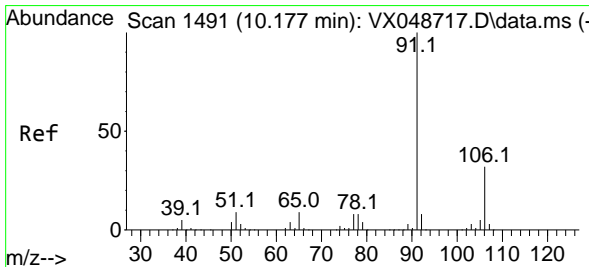
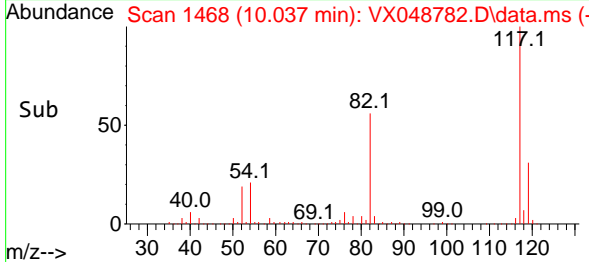
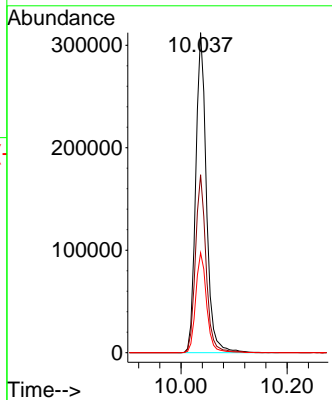
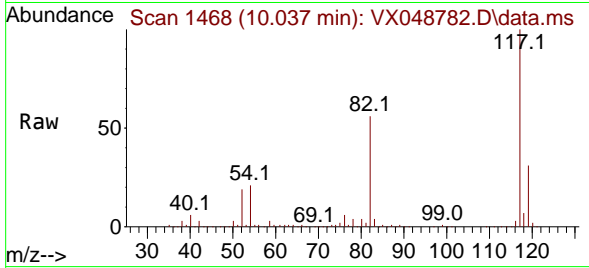


#63
 Chlorobenzene-d5
 Concen: 50.000 ug/l
 RT: 10.037 min Scan# 1491
 Delta R.T. -0.000 min
 Lab File: VX048782.D
 Acq: 09 Dec 2025 14:27

Instrument : MSVOA_X
 ClientSampleId : CHASE-F

Tgt Ion: 117 Resp: 436809

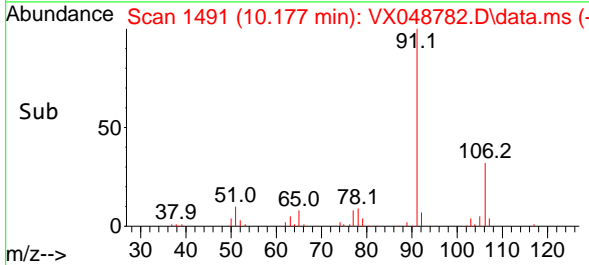
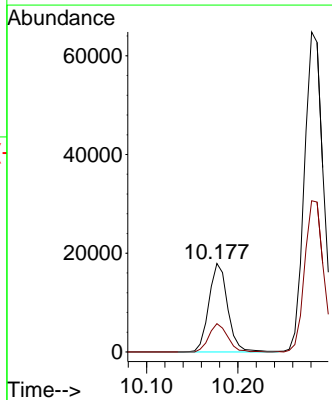
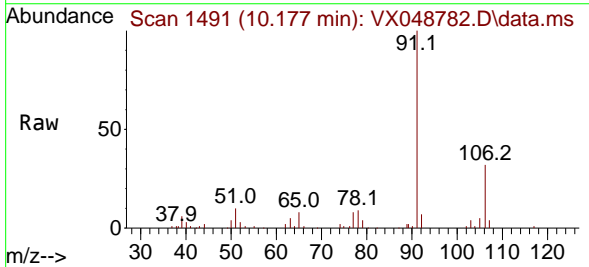
Ion	Ratio	Lower	Upper
117	100		
82	55.6	44.1	66.1
119	31.2	25.2	37.8

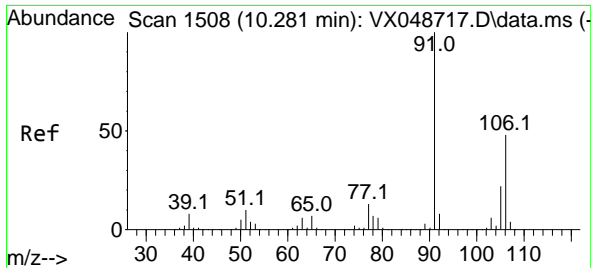


#67
 Ethyl Benzene
 Concen: 1.640 ug/l
 RT: 10.177 min Scan# 1491
 Delta R.T. -0.000 min
 Lab File: VX048782.D
 Acq: 09 Dec 2025 14:27

Tgt Ion: 91 Resp: 25591

Ion	Ratio	Lower	Upper
91	100		
106	32.1	25.3	37.9

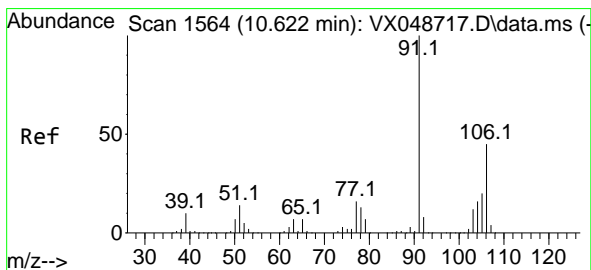
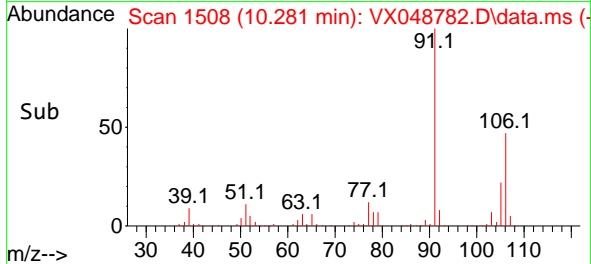
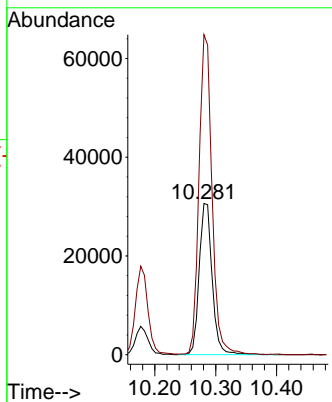
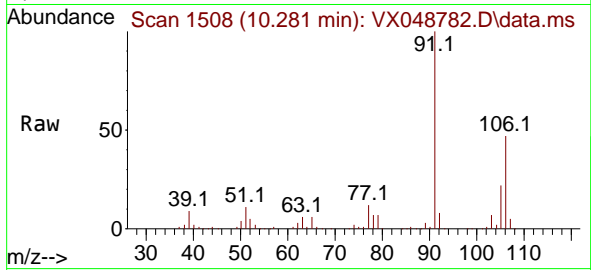




#68
 m/p-Xylenes
 Concen: 7.433 ug/l
 RT: 10.281 min Scan# 1508
 Delta R.T. -0.000 min
 Lab File: VX048782.D
 Acq: 09 Dec 2025 14:27

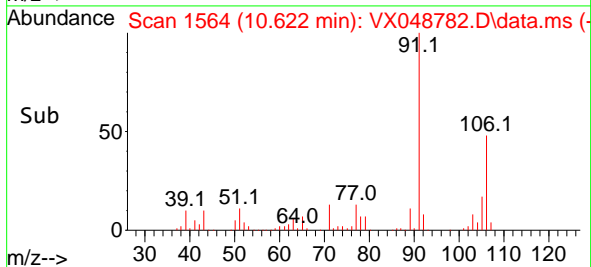
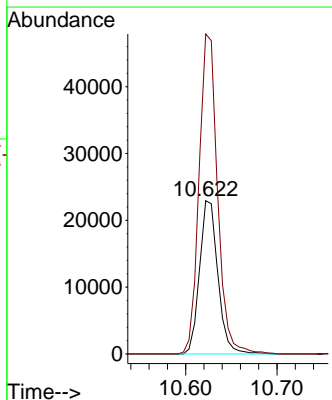
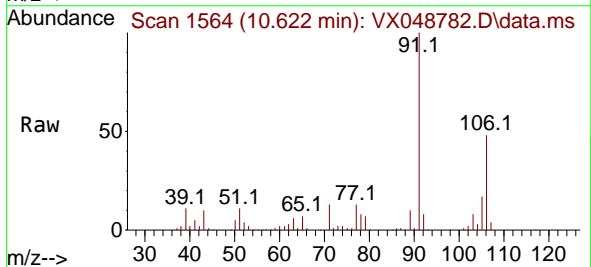
Instrument : MSVOA_X
 ClientSampleId : CHASE-F

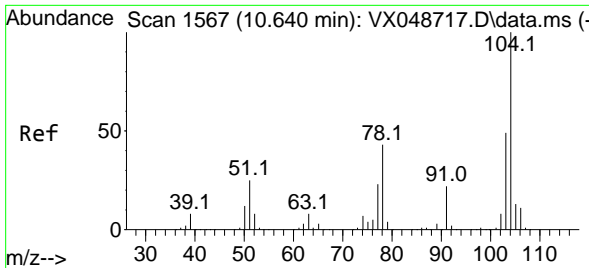
Tgt Ion:106 Resp: 45171
 Ion Ratio Lower Upper
 106 100
 91 212.8 164.2 246.4



#69
 o-Xylene
 Concen: 5.602 ug/l
 RT: 10.622 min Scan# 1564
 Delta R.T. -0.000 min
 Lab File: VX048782.D
 Acq: 09 Dec 2025 14:27

Tgt Ion:106 Resp: 31904
 Ion Ratio Lower Upper
 106 100
 91 210.8 108.1 324.3

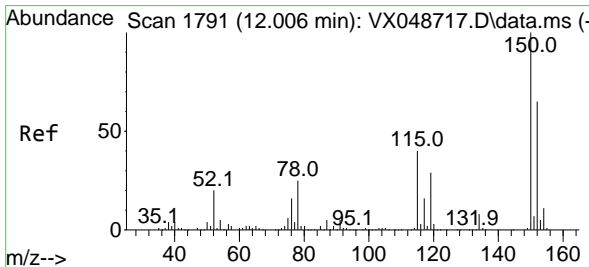
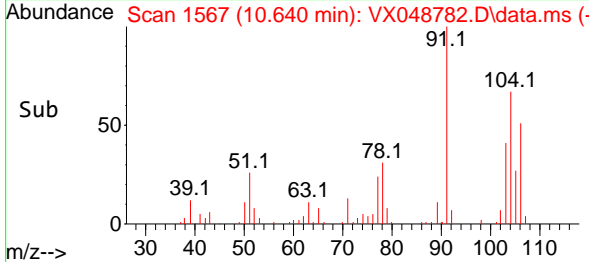
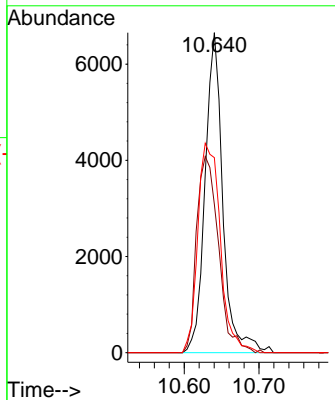
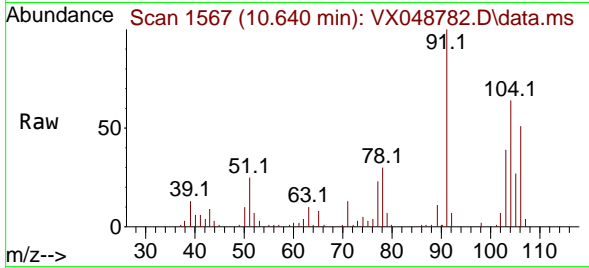




#70
 Styrene
 Concen: 1.123 ug/l
 RT: 10.640 min Scan# 11
 Delta R.T. -0.000 min
 Lab File: VX048782.D
 Acq: 09 Dec 2025 14:27

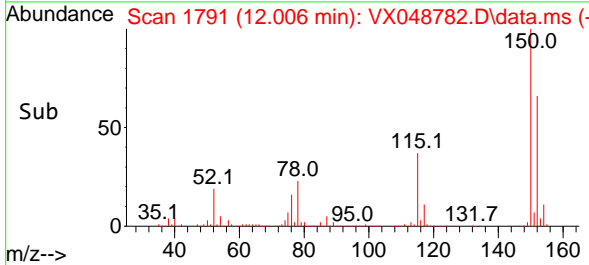
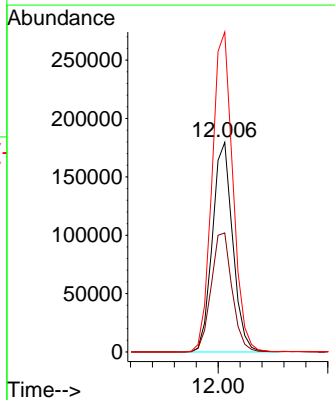
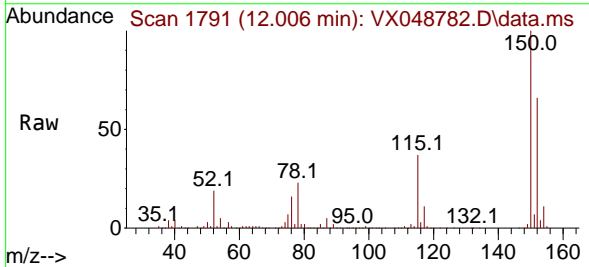
Instrument :
 MSVOA_X
 ClientSampleId :
 CHASE-F

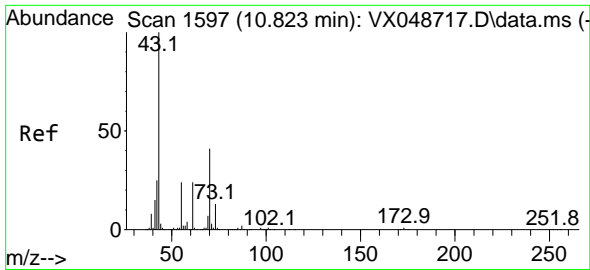
Tgt Ion	Resp	Lower	Upper
104	100		
78	75.6	40.6	60.8#
103	82.9	43.4	65.2#



#72
 1,4-Dichlorobenzene-d4
 Concen: 50.000 ug/l
 RT: 12.006 min Scan# 1791
 Delta R.T. -0.000 min
 Lab File: VX048782.D
 Acq: 09 Dec 2025 14:27

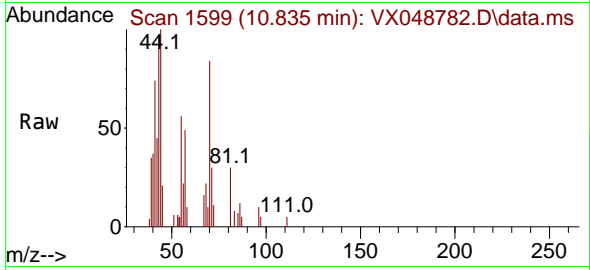
Tgt Ion	Resp	Lower	Upper
152	100		
115	58.6	42.1	126.4
150	156.8	0.0	347.8





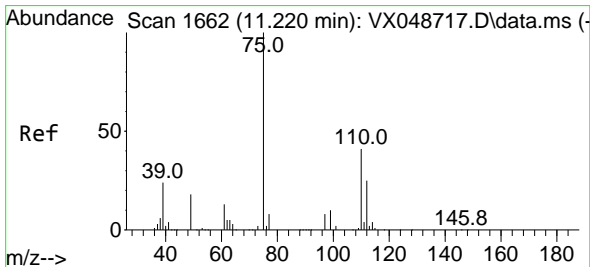
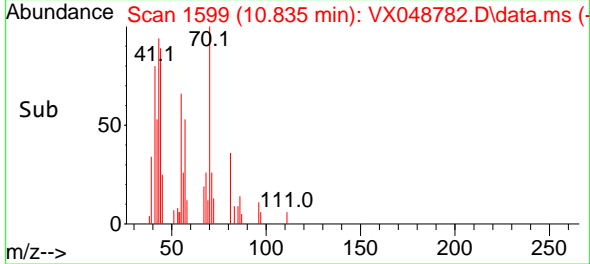
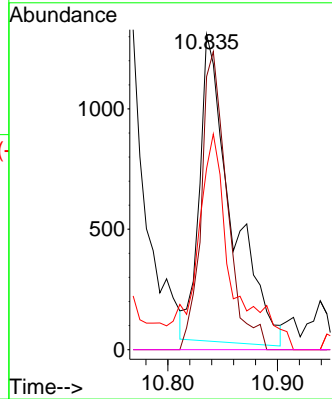
#74
 N-amy1 acetate
 Concen: 0.384 ug/l
 RT: 10.835 min Scan# 1597
 Delta R.T. 0.012 min
 Lab File: VX048782.D
 Acq: 09 Dec 2025 14:27

Instrument :
 MSVOA_X
 ClientSampleId :
 CHASE-F



Tgt Ion: 43 Resp: 2599

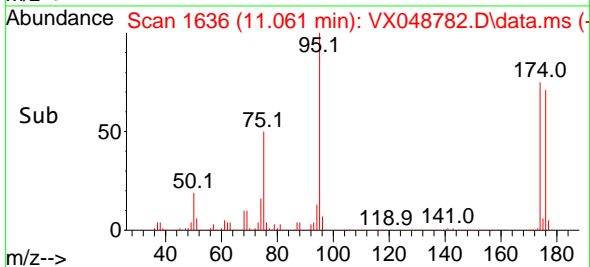
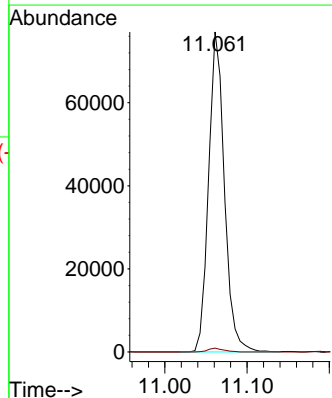
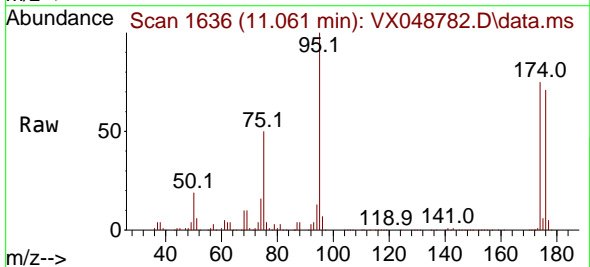
Ion	Ratio	Lower	Upper
43	100		
70	78.1	33.9	50.9#
55	75.5	19.1	28.7#
61	0.0	19.0	28.6#

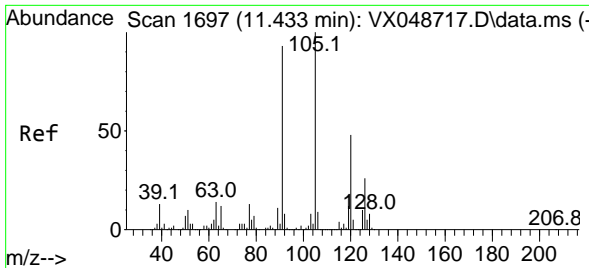


#76
 1,2,3-Trichloropropane
 Concen: 23.876 ug/l
 RT: 11.061 min Scan# 1636
 Delta R.T. -0.159 min
 Lab File: VX048782.D
 Acq: 09 Dec 2025 14:27

Tgt Ion: 75 Resp: 102833

Ion	Ratio	Lower	Upper
75	100		
77	1.2	24.3	73.0#

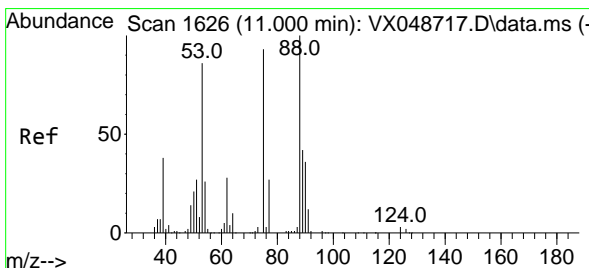
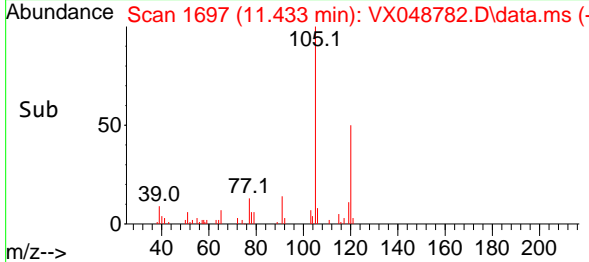
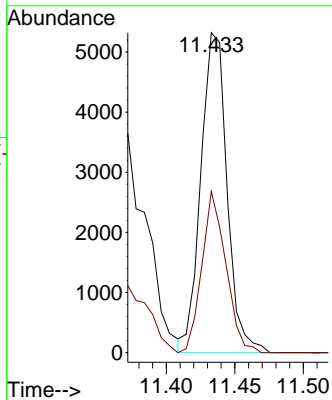
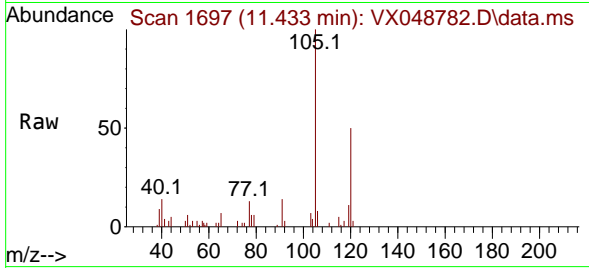




#80
 1,3,5-Trimethylbenzene
 Concen: 0.553 ug/l
 RT: 11.433 min Scan# 11
 Delta R.T. -0.000 min
 Lab File: VX048782.D
 Acq: 09 Dec 2025 14:27

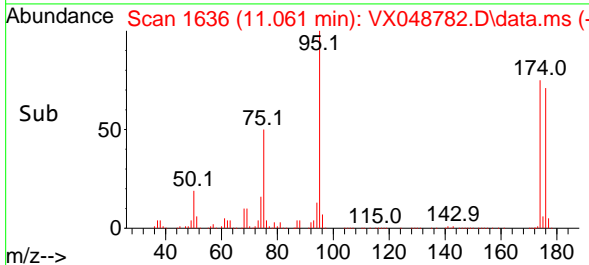
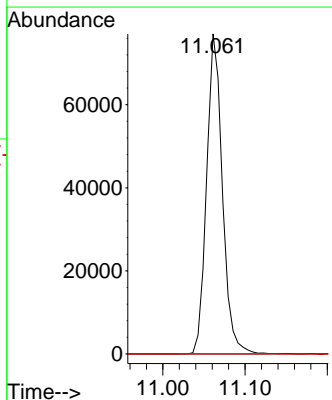
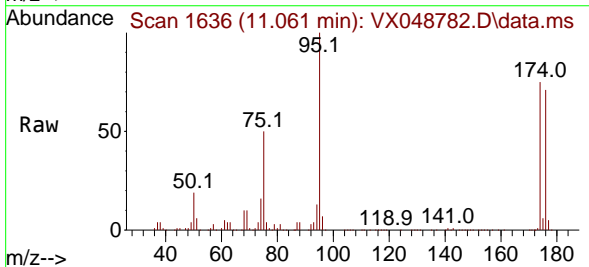
Instrument :
 MSVOA_X
 ClientSampleId :
 CHASE-F

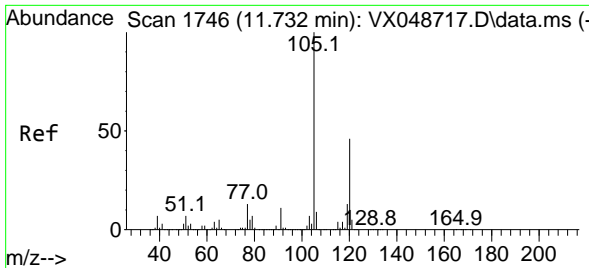
Tgt Ion: 105 Resp: 7079
 Ion Ratio Lower Upper
 105 100
 120 46.2 24.4 73.2



#81
 trans-1,4-Dichloro-2-butene
 Concen: 56.714 ug/l
 RT: 11.061 min Scan# 1636
 Delta R.T. 0.061 min
 Lab File: VX048782.D
 Acq: 09 Dec 2025 14:27

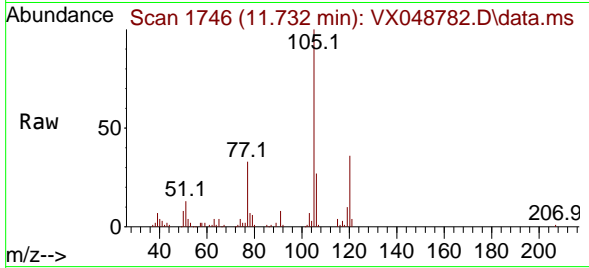
Tgt Ion: 75 Resp: 102833
 Ion Ratio Lower Upper
 75 100
 53 0.0 79.9 119.9#
 89 0.0 67.1 100.7#



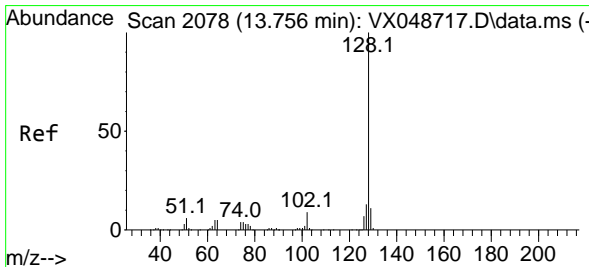
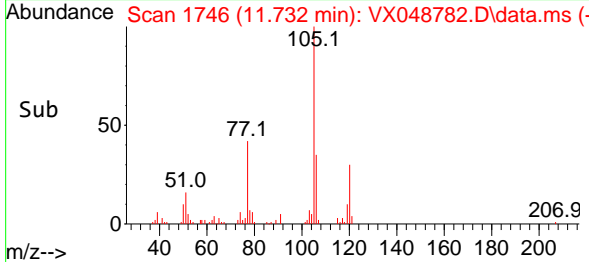
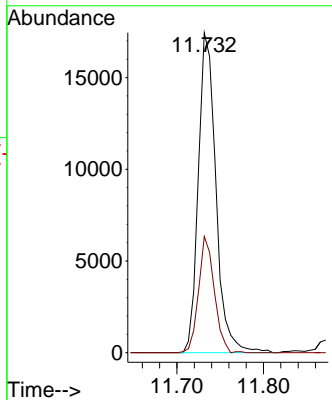


#84
 1,2,4-Trimethylbenzene
 Concen: 1.905 ug/l
 RT: 11.732 min Scan# 11
 Delta R.T. -0.000 min
 Lab File: VX048782.D
 Acq: 09 Dec 2025 14:27

Instrument :
 MSVOA_X
 ClientSampleId :
 CHASE-F



Tgt Ion:105 Resp: 24619
 Ion Ratio Lower Upper
 105 100
 120 32.5 22.3 66.8



#95
 Naphthalene
 Concen: 15.691 ug/l
 RT: 13.756 min Scan# 2078
 Delta R.T. -0.000 min
 Lab File: VX048782.D
 Acq: 09 Dec 2025 14:27

Tgt Ion:128 Resp: 203178
 Ion Ratio Lower Upper
 128 100
 127 12.5 10.2 15.2
 129 10.9 8.6 13.0

