

Data Path : Z:\voasrv\HPCHEM1\MSVOA_X\Data\VX120925\
 Data File : VX048783.D
 Acq On : 09 Dec 2025 14:48
 Operator : JC/MD
 Sample : Q3803-07
 Misc : 5.0mL/MSVOA_X/WATER
 ALS Vial : 17 Sample Multiplier: 1

Instrument :
 MSVOA_X
 ClientSampleId :
 CHASE-G

Quant Time: Dec 10 00:23:11 2025
 Quant Method : Z:\voasrv\HPCHEM1\MSVOA_X\Method\82X120425W.M
 Quant Title : SW846 8260
 QLast Update : Fri Dec 05 03:27:34 2025
 Response via : Initial Calibration

Compound	R.T.	QIon	Response	Conc	Units	Dev(Min)
Internal Standards						
1) Pentafluorobenzene	5.538	168	186300	50.000	ug/l	0.00
34) 1,4-Difluorobenzene	6.745	114	391593	50.000	ug/l	0.00
63) Chlorobenzene-d5	10.037	117	411898	50.000	ug/l	0.00
72) 1,4-Dichlorobenzene-d4	12.000	152	219312	50.000	ug/l	0.00
System Monitoring Compounds						
33) 1,2-Dichloroethane-d4	5.940	65	140505	56.191	ug/l	0.00
Spiked Amount	50.000	Range	78 - 117	Recovery	=	112.380%
35) Dibromofluoromethane	5.373	113	125191	46.431	ug/l	0.00
Spiked Amount	50.000	Range	75 - 124	Recovery	=	92.860%
50) Toluene-d8	8.635	98	442865	46.858	ug/l	0.00
Spiked Amount	50.000	Range	92 - 112	Recovery	=	93.720%
62) 4-Bromofluorobenzene	11.061	95	196539	60.305	ug/l	0.00
Spiked Amount	50.000	Range	83 - 123	Recovery	=	120.600%
Target Compounds						
						Qvalue
11) Tert butyl alcohol	2.934	59	4458	11.043	ug/l	98
13) Acrolein	2.246	56	726	41.741	ug/l #	59
14) Allyl chloride	2.642	41	1446	0.398	ug/l #	27
15) Acrylonitrile	3.075	53	274	0.218	ug/l #	71
16) Acetone	2.374	43	89569	93.570	ug/l	96
18) Methyl Acetate	2.703	43	15966	5.928	ug/l	94
20) Methylene Chloride	2.794	84	131647	55.022	ug/l	96
25) 2-Butanone	4.550	43	15117	10.700	ug/l	98
29) Tetrahydrofuran	5.013	42	502	0.465	ug/l #	59
36) 1,1-Dichloropropene	5.544	75	14787	4.004	ug/l #	48
37) Ethyl Acetate	4.550	43	15117	3.426	ug/l #	71
38) Carbon Tetrachloride	5.544	117	18655	4.460	ug/l #	14
39) Methylcyclohexane	7.373	83	890	0.204	ug/l #	80
40) Benzene	6.031	78	270598	24.718	ug/l	98
42) 1,2-Dichloroethane	6.025	62	2253	0.581	ug/l #	73
43) Isopropyl Acetate	6.330	43	14019	2.098	ug/l	97
48) Methyl methacrylate	7.781	41	56446	16.793	ug/l #	42
49) 1,4-Dioxane	7.775	88	23	0.498	ug/l #	1
51) 4-Methyl-2-Pentanone	8.555	43	1103152	265.988	ug/l	97
52) Toluene	8.702	92	150542	22.804	ug/l	98
54) cis-1,3-Dichloropropene	8.537	75	23688	5.355	ug/l #	1
55) 1,1,2-Trichloroethane	9.000	97	913	0.344	ug/l #	16
56) Ethyl methacrylate	9.013	69	986	0.237	ug/l #	1
57) 1,3-Dichloropropane	9.464	76	1981	0.449	ug/l #	42
59) 2-Hexanone	9.464	43	24702	8.485	ug/l #	52
67) Ethyl Benzene	10.177	91	41066	2.791	ug/l	98
68) m/p-Xylenes	10.281	106	79369	13.849	ug/l	100
69) o-Xylene	10.622	106	85268	15.878	ug/l	99
70) Styrene	10.640	104	12265	1.330	ug/l #	1
74) N-amyl acetate	10.842	43	2562	0.399	ug/l #	25
76) 1,2,3-Trichloropropane	11.061	75	97312	23.823	ug/l #	30
80) 1,3,5-Trimethylbenzene	11.433	105	6493	0.534	ug/l	99
81) trans-1,4-Dichloro-2-b...	11.061	75	97312	56.590	ug/l #	3
84) 1,2,4-Trimethylbenzene	11.598	105	4050	0.330	ug/l	75
85) sec-Butylbenzene	11.732	105	74707	4.884	ug/l #	57
95) Naphthalene	13.756	128	231885	19.012	ug/l	99

Data Path : Z:\voasrv\HPCHEM1\MSVOA_X\Data\VX120925\
Data File : VX048783.D
Acq On : 09 Dec 2025 14:48
Operator : JC/MD
Sample : Q3803-07
Misc : 5.0mL/MSVOA_X/WATER
ALS Vial : 17 Sample Multiplier: 1

Instrument :
MSVOA_X
ClientSampleId :
CHASE-G

Quant Time: Dec 10 00:23:11 2025
Quant Method : Z:\voasrv\HPCHEM1\MSVOA_X\Method\82X120425W.M
Quant Title : SW846 8260
QLast Update : Fri Dec 05 03:27:34 2025
Response via : Initial Calibration

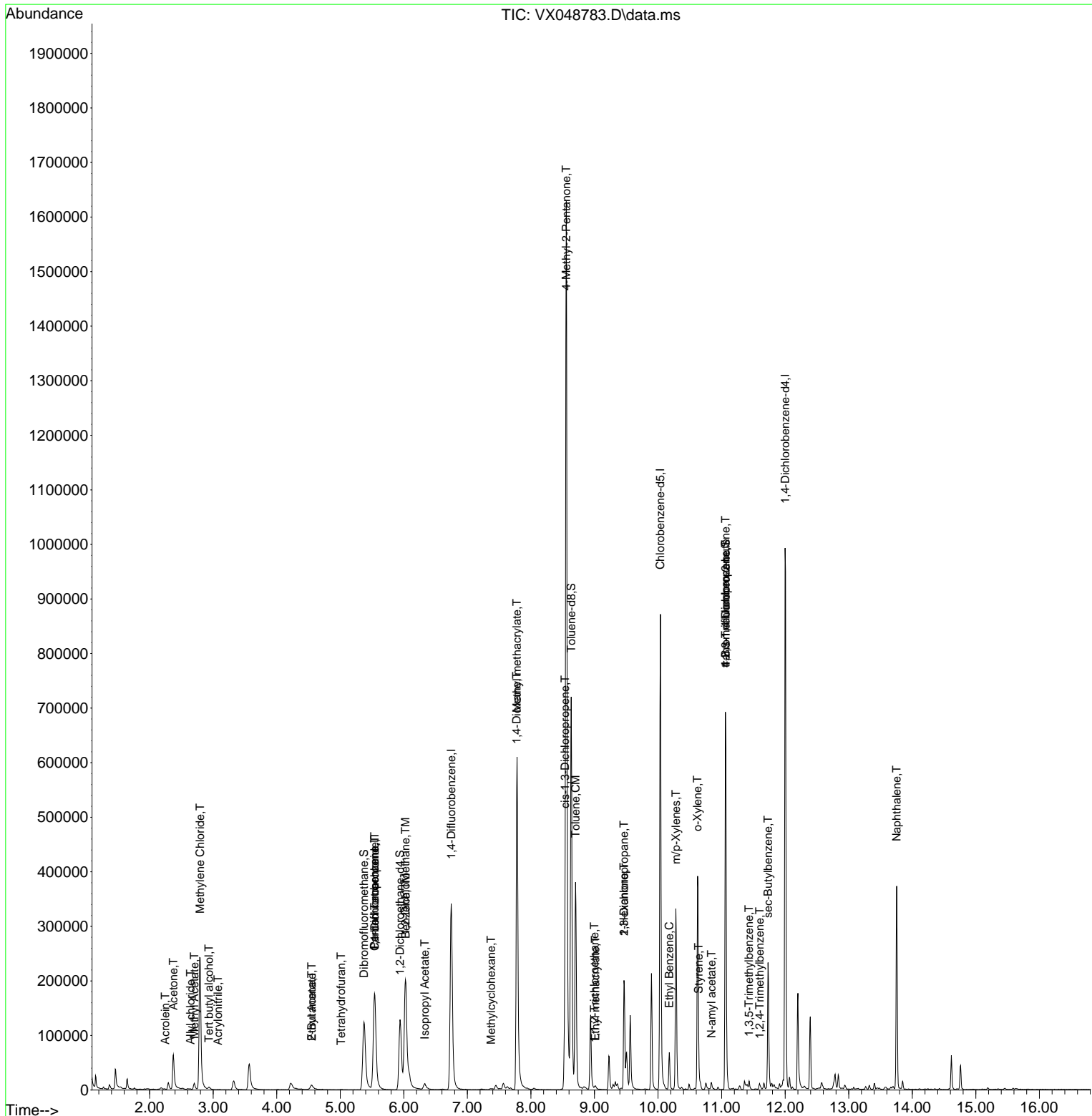
Compound	R.T.	QIon	Response	Conc	Units	Dev(Min)
----------	------	------	----------	------	-------	----------

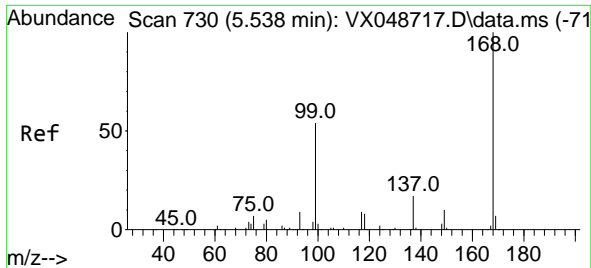
(#) = qualifier out of range (m) = manual integration (+) = signals summed

Data Path : Z:\voasrv\HPCHEM1\MSVOA_X\Data\VX120925\
 Data File : VX048783.D
 Acq On : 09 Dec 2025 14:48
 Operator : JC/MD
 Sample : Q3803-07
 Misc : 5.0mL/MSVOA_X/WATER
 ALS Vial : 17 Sample Multiplier: 1

Instrument :
 MSVOA_X
 ClientSampleId :
 CHASE-G

Quant Time: Dec 10 00:23:11 2025
 Quant Method : Z:\voasrv\HPCHEM1\MSVOA_X\Method\82X120425W.M
 Quant Title : SW846 8260
 QLast Update : Fri Dec 05 03:27:34 2025
 Response via : Initial Calibration

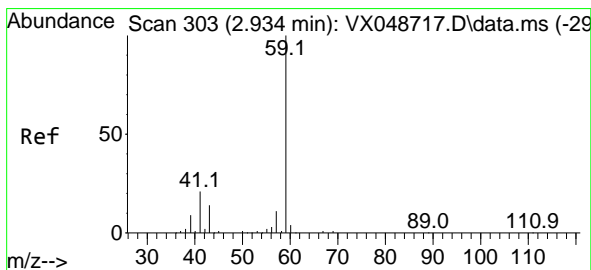
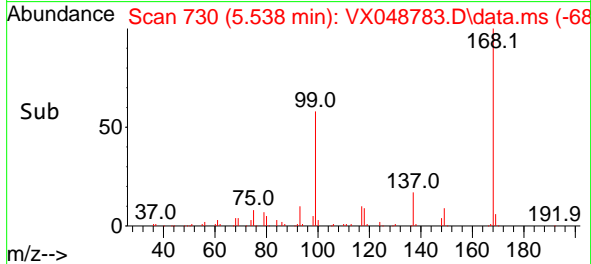
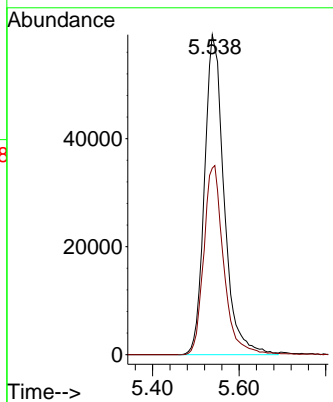
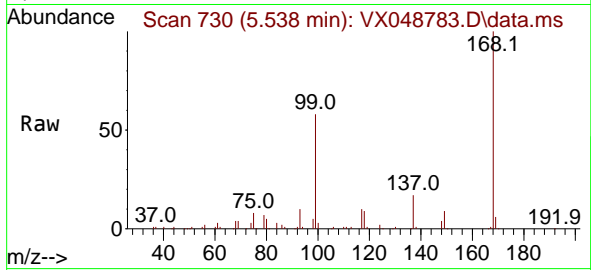




#1
 Pentafluorobenzene
 Concen: 50.000 ug/l
 RT: 5.538 min Scan# 71
 Delta R.T. -0.000 min
 Lab File: VX048783.D
 Acq: 09 Dec 2025 14:48

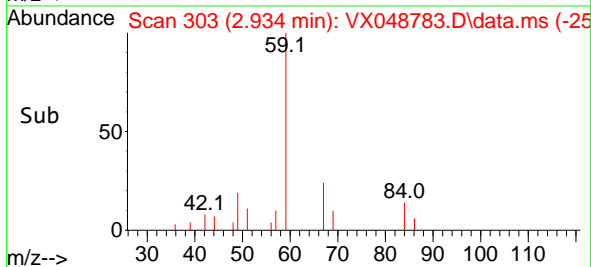
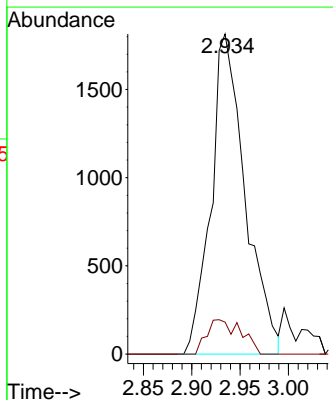
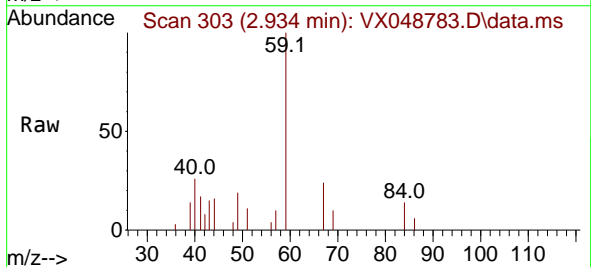
Instrument : MSVOA_X
 ClientSampleId : CHASE-G

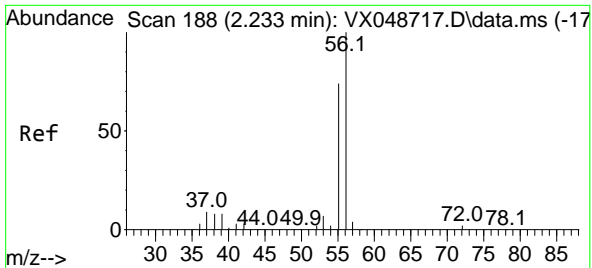
Tgt Ion:168 Resp: 186300
 Ion Ratio Lower Upper
 168 100
 99 58.3 44.2 66.4



#11
 Tert butyl alcohol
 Concen: 11.043 ug/l
 RT: 2.934 min Scan# 303
 Delta R.T. 0.000 min
 Lab File: VX048783.D
 Acq: 09 Dec 2025 14:48

Tgt Ion: 59 Resp: 4458
 Ion Ratio Lower Upper
 59 100
 57 10.8 8.1 12.1



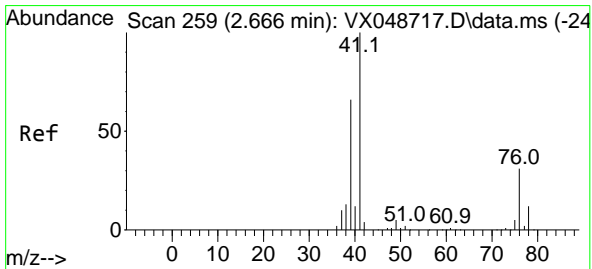
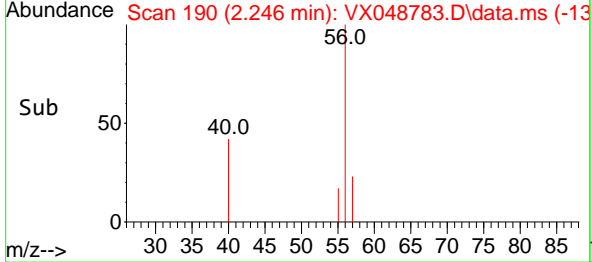
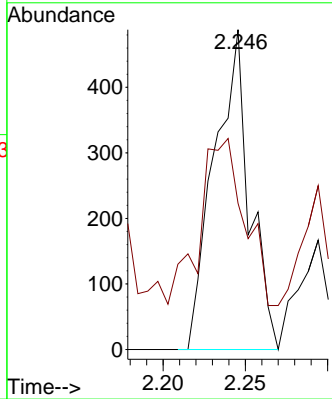
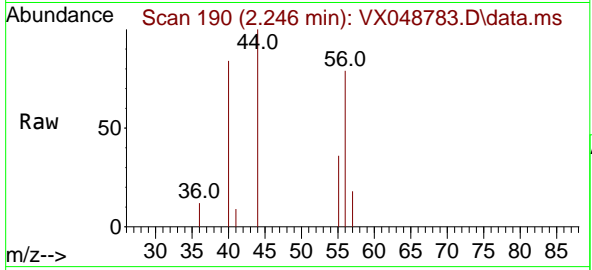


#13
 Acrolein
 Concen: 41.741 ug/l
 RT: 2.246 min Scan# 190
 Delta R.T. 0.012 min
 Lab File: VX048783.D
 Acq: 09 Dec 2025 14:48

Instrument : MSVOA_X
 ClientSampleId : CHASE-G

Tgt Ion: 56 Resp: 726

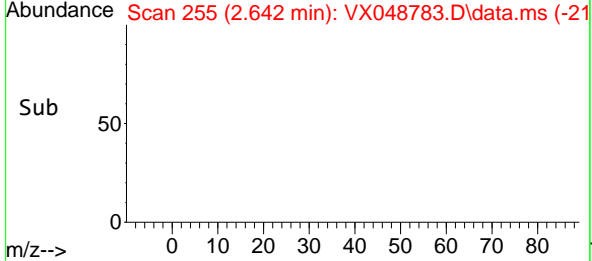
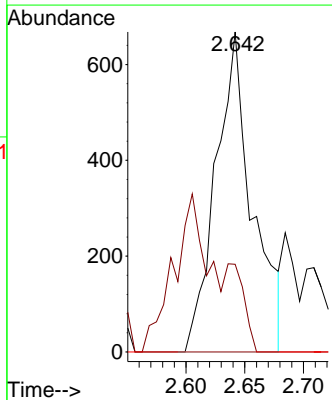
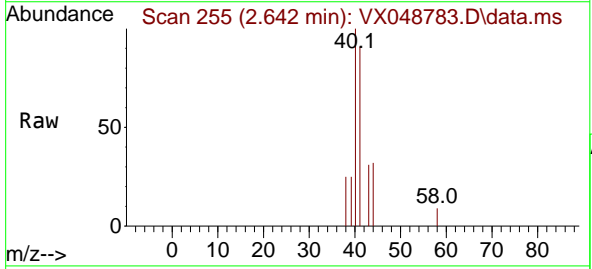
Ion	Ratio	Lower	Upper
56	100		
55	102.9	55.8	83.6#

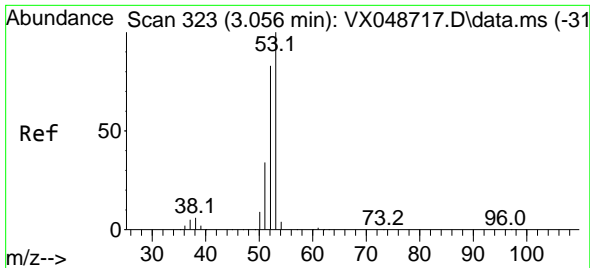


#14
 Allyl chloride
 Concen: 0.398 ug/l
 RT: 2.642 min Scan# 255
 Delta R.T. -0.024 min
 Lab File: VX048783.D
 Acq: 09 Dec 2025 14:48

Tgt Ion: 41 Resp: 1446

Ion	Ratio	Lower	Upper
41	100		
39	0.0	49.8	74.6#
76	0.0	27.3	40.9#



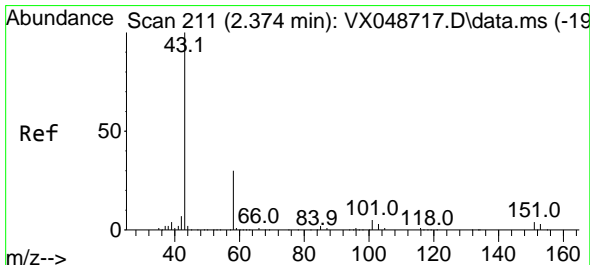
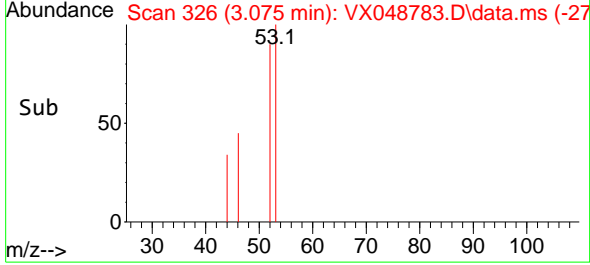
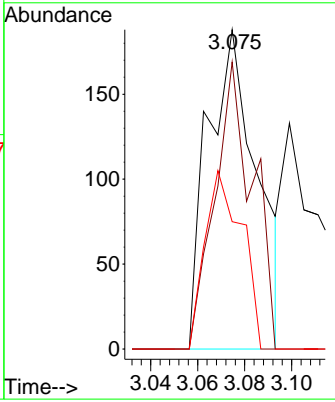
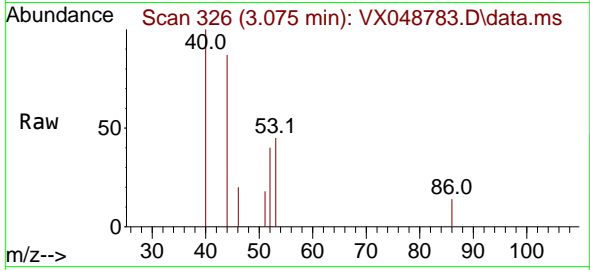


#15
 Acrylonitrile
 Concen: 0.218 ug/l
 RT: 3.075 min Scan# 31
 Delta R.T. 0.018 min
 Lab File: VX048783.D
 Acq: 09 Dec 2025 14:48

Instrument : MSVOA_X
 ClientSampleId : CHASE-G

Tgt Ion: 53 Resp: 274

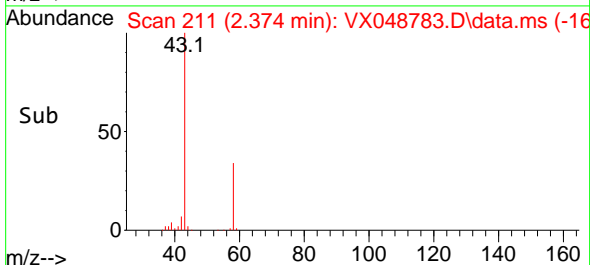
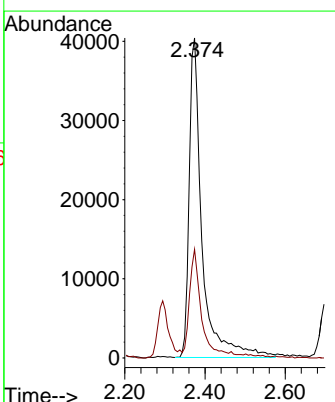
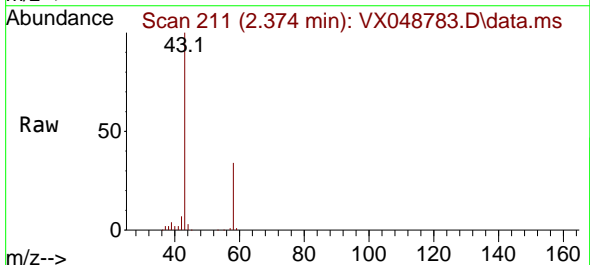
Ion	Ratio	Lower	Upper
53	100		
52	69.3	66.3	99.5
51	0.0	28.7	43.1#

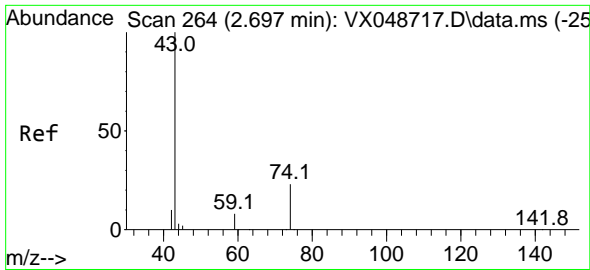


#16
 Acetone
 Concen: 93.570 ug/l
 RT: 2.374 min Scan# 211
 Delta R.T. 0.000 min
 Lab File: VX048783.D
 Acq: 09 Dec 2025 14:48

Tgt Ion: 43 Resp: 89569

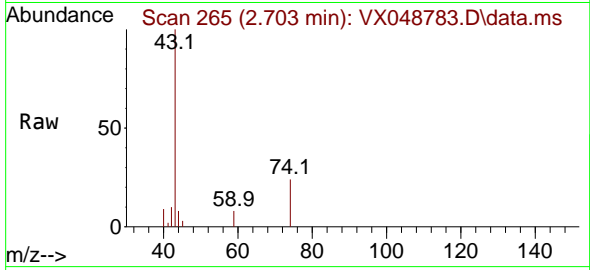
Ion	Ratio	Lower	Upper
43	100		
58	33.4	25.0	37.4



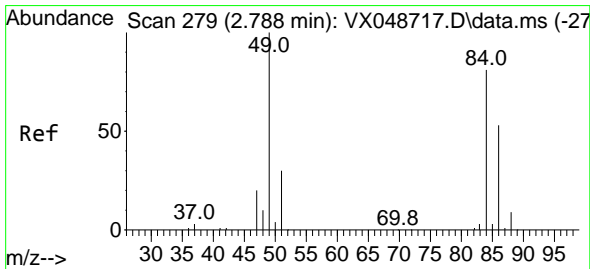
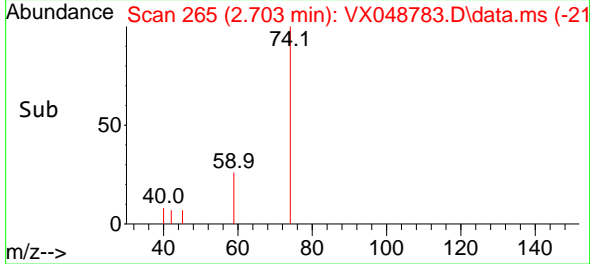
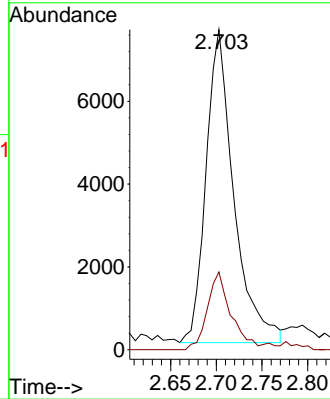


#18
 Methyl Acetate
 Concen: 5.928 ug/l
 RT: 2.703 min Scan# 20
 Delta R.T. 0.006 min
 Lab File: VX048783.D
 Acq: 09 Dec 2025 14:48

Instrument :
 MSVOA_X
 ClientSampleId :
 CHASE-G

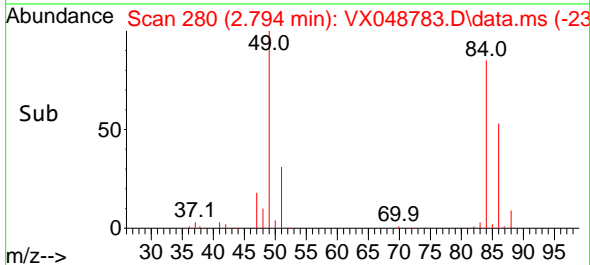
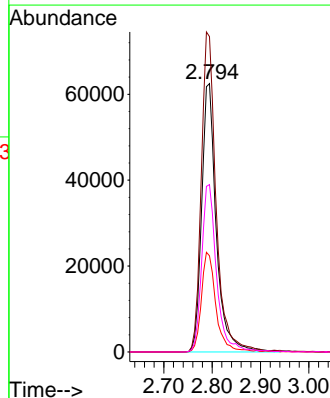
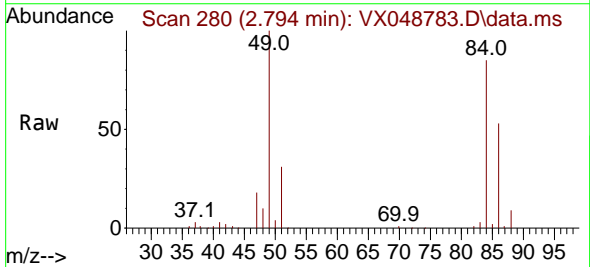


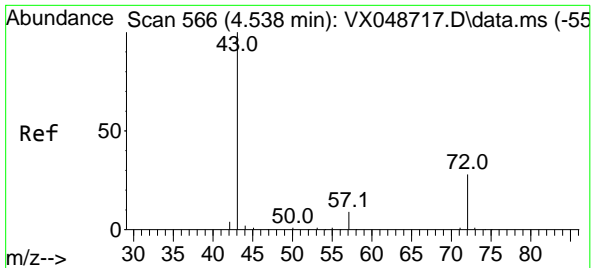
Tgt Ion: 43 Resp: 15966
 Ion Ratio Lower Upper
 43 100
 74 21.2 19.2 28.8



#20
 Methylene Chloride
 Concen: 55.022 ug/l
 RT: 2.794 min Scan# 280
 Delta R.T. 0.006 min
 Lab File: VX048783.D
 Acq: 09 Dec 2025 14:48

Tgt Ion: 84 Resp: 131647
 Ion Ratio Lower Upper
 84 100
 49 117.5 98.7 148.1
 51 35.9 29.4 44.2
 86 62.4 52.5 78.7

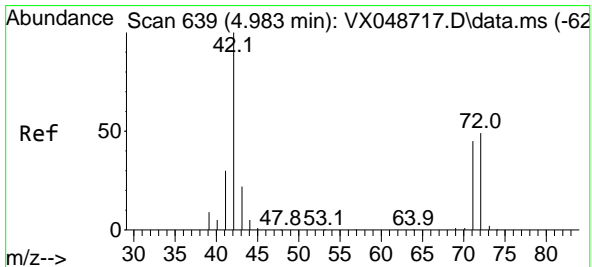
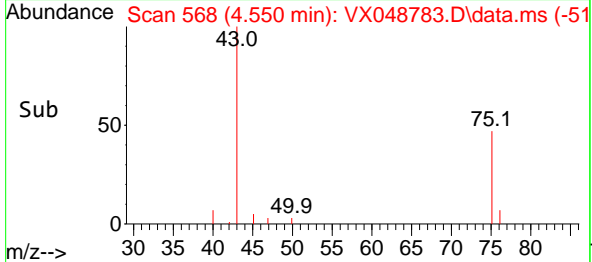
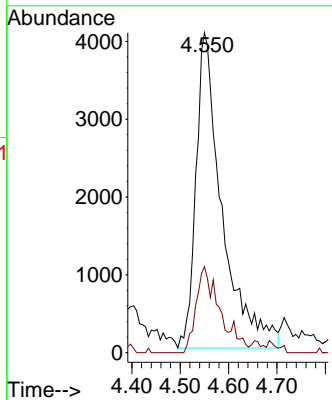
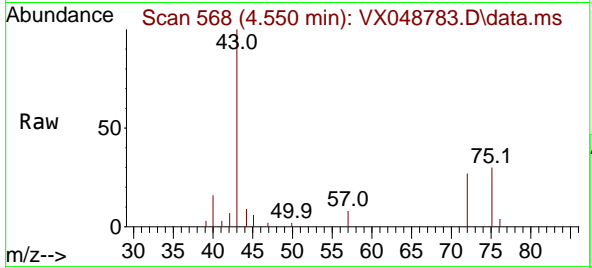




#25
 2-Butanone
 Concen: 10.700 ug/l
 RT: 4.550 min Scan# 50
 Delta R.T. 0.012 min
 Lab File: VX048783.D
 Acq: 09 Dec 2025 14:48

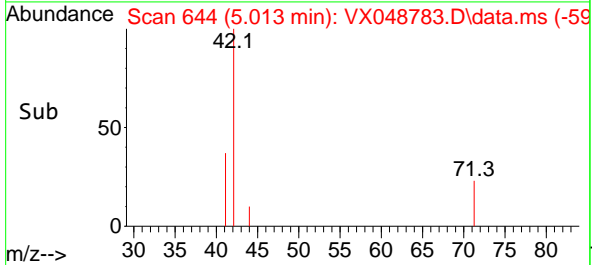
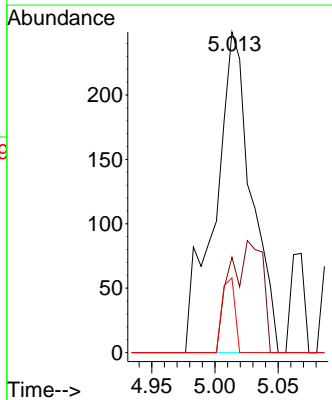
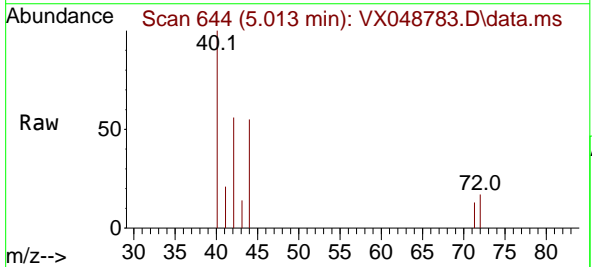
Instrument :
 MSVOA_X
 ClientSampleId :
 CHASE-G

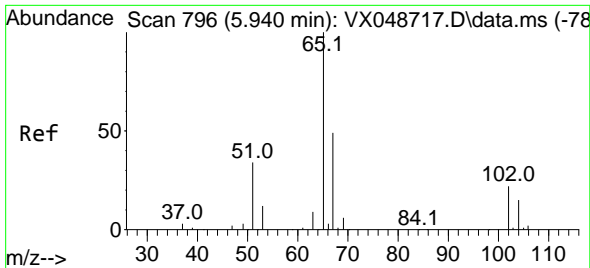
Tgt Ion: 43 Resp: 15117
 Ion Ratio Lower Upper
 43 100
 72 27.3 22.6 34.0



#29
 Tetrahydrofuran
 Concen: 0.465 ug/l
 RT: 5.013 min Scan# 644
 Delta R.T. 0.031 min
 Lab File: VX048783.D
 Acq: 09 Dec 2025 14:48

Tgt Ion: 42 Resp: 502
 Ion Ratio Lower Upper
 42 100
 72 30.7 39.4 59.2#
 71 8.0 35.8 53.6#

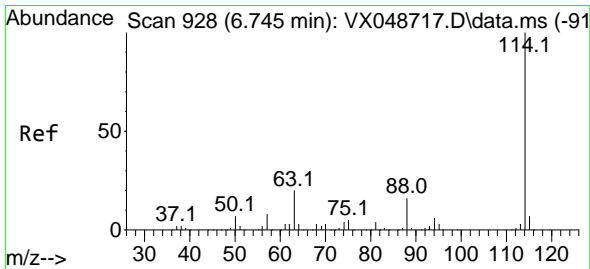
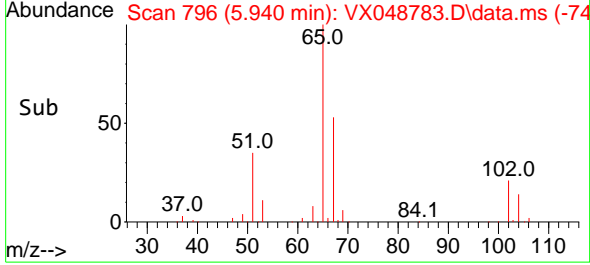
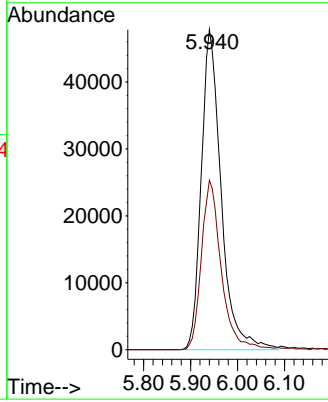
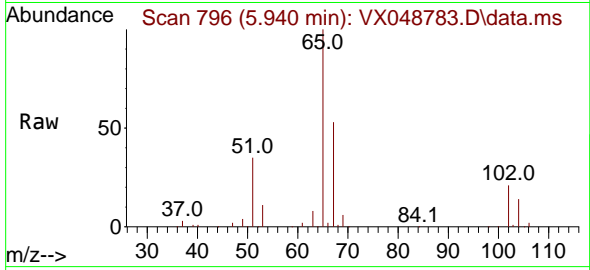




#33
 1,2-Dichloroethane-d4
 Concen: 56.191 ug/l
 RT: 5.940 min Scan# 796
 Delta R.T. 0.000 min
 Lab File: VX048783.D
 Acq: 09 Dec 2025 14:48

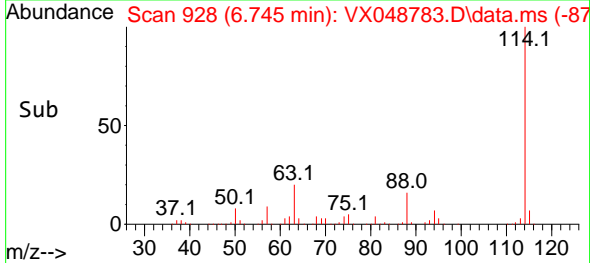
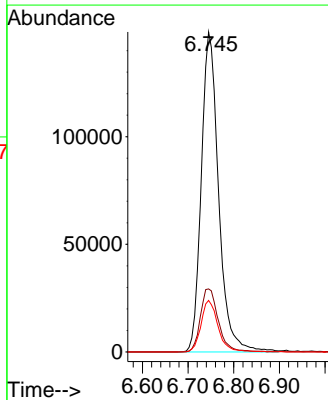
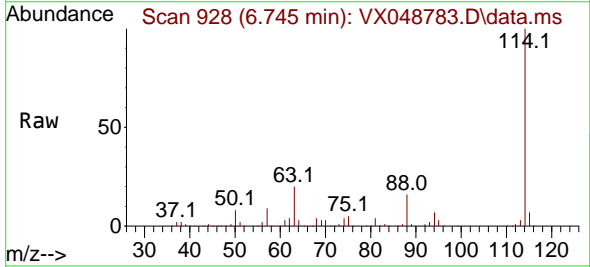
Instrument : MSVOA_X
 ClientSampleId : CHASE-G

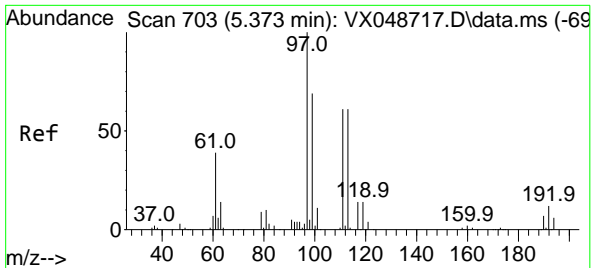
Tgt Ion: 65 Resp: 140505
 Ion Ratio Lower Upper
 65 100
 67 52.8 0.0 107.4



#34
 1,4-Difluorobenzene
 Concen: 50.000 ug/l
 RT: 6.745 min Scan# 928
 Delta R.T. 0.000 min
 Lab File: VX048783.D
 Acq: 09 Dec 2025 14:48

Tgt Ion:114 Resp: 391593
 Ion Ratio Lower Upper
 114 100
 63 19.7 0.0 39.0
 88 16.1 0.0 31.8

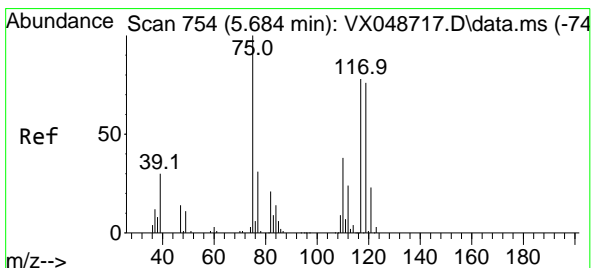
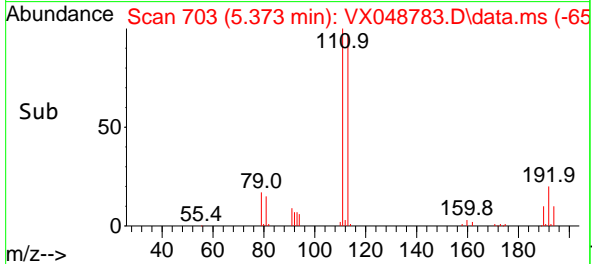
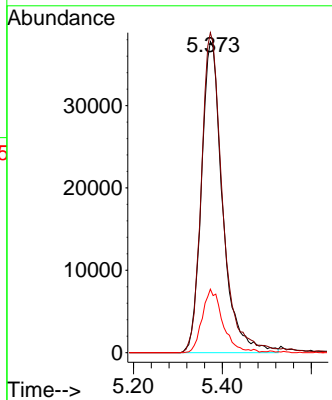
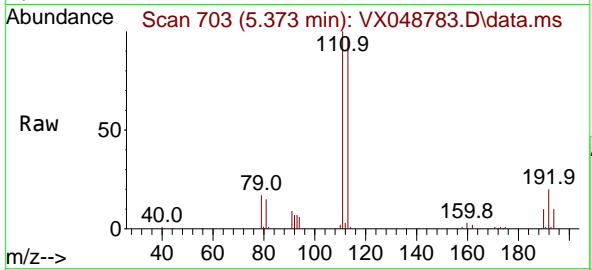




#35
 Dibromofluoromethane
 Concen: 46.431 ug/l
 RT: 5.373 min Scan# 703
 Delta R.T. 0.000 min
 Lab File: VX048783.D
 Acq: 09 Dec 2025 14:48

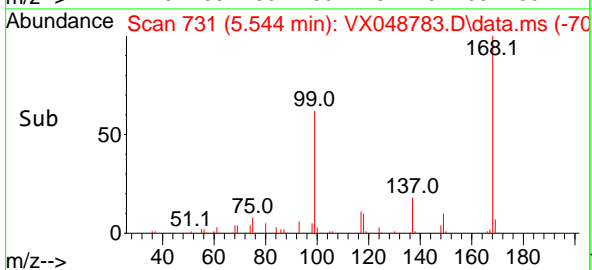
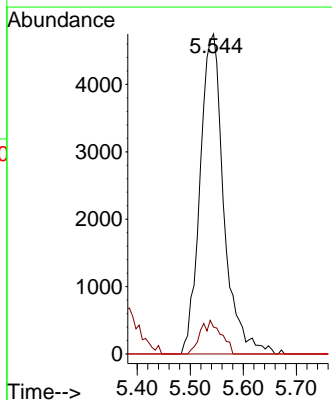
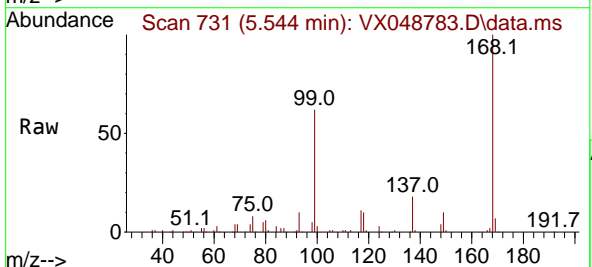
Instrument :
 MSVOA_X
 ClientSampleId :
 CHASE-G

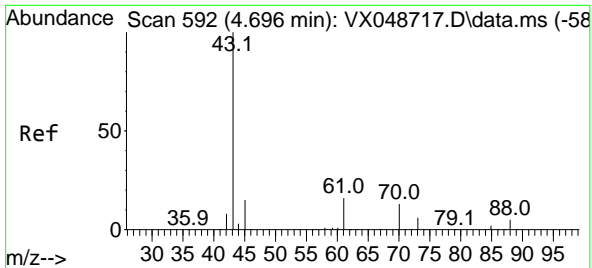
Tgt Ion: 113 Resp: 125191
 Ion Ratio Lower Upper
 113 100
 111 103.1 79.5 119.3
 192 20.0 16.1 24.1



#36
 1,1-Dichloropropene
 Concen: 4.004 ug/l
 RT: 5.544 min Scan# 731
 Delta R.T. -0.140 min
 Lab File: VX048783.D
 Acq: 09 Dec 2025 14:48

Tgt Ion: 75 Resp: 14787
 Ion Ratio Lower Upper
 75 100
 110 9.2 18.6 55.8#
 77 0.0 25.3 37.9#



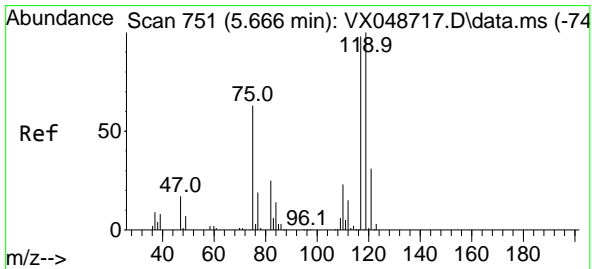
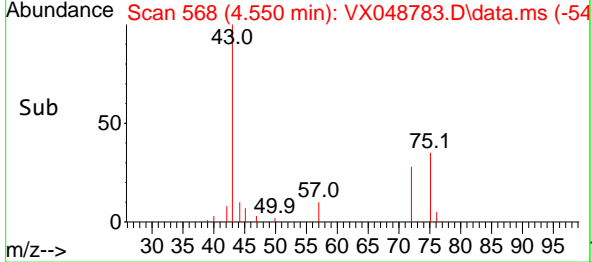
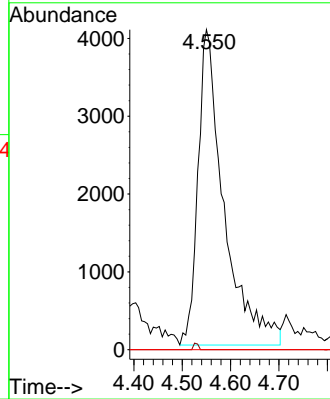
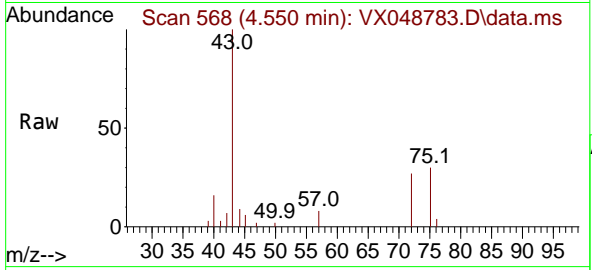


#37
 Ethyl Acetate
 Concen: 3.426 ug/l
 RT: 4.550 min Scan# 509
 Delta R.T. -0.146 min
 Lab File: VX048783.D
 Acq: 09 Dec 2025 14:48

Instrument : MSVOA_X
 ClientSampleId : CHASE-G

Tgt Ion: 43 Resp: 15117

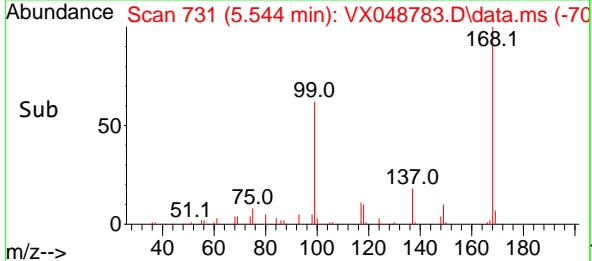
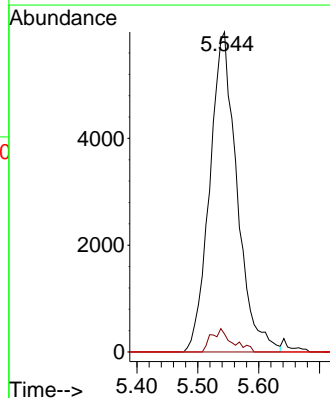
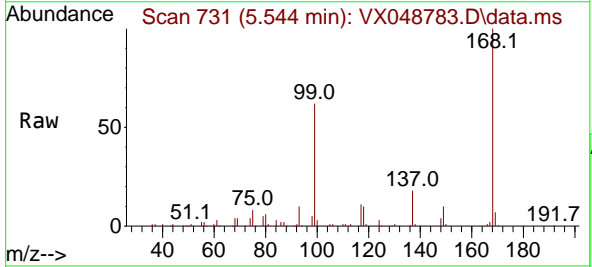
Ion	Ratio	Lower	Upper
43	100		
61	0.0	9.7	14.5#
70	0.0	8.2	12.4#

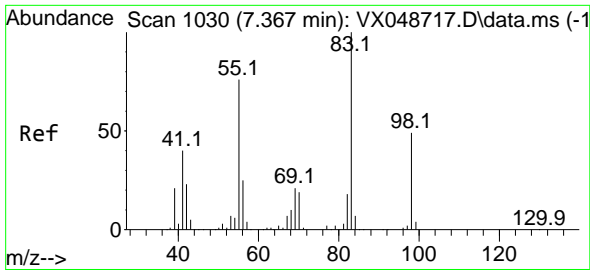


#38
 Carbon Tetrachloride
 Concen: 4.460 ug/l
 RT: 5.544 min Scan# 731
 Delta R.T. -0.122 min
 Lab File: VX048783.D
 Acq: 09 Dec 2025 14:48

Tgt Ion: 117 Resp: 18655

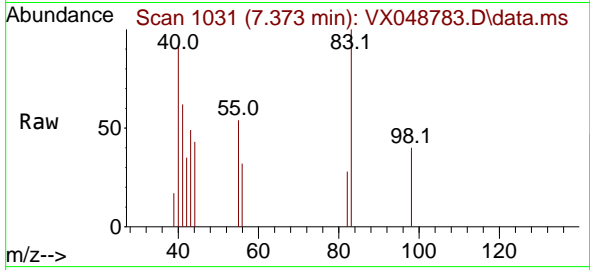
Ion	Ratio	Lower	Upper
117	100		
119	5.6	80.5	120.7#
121	0.0	25.4	38.0#



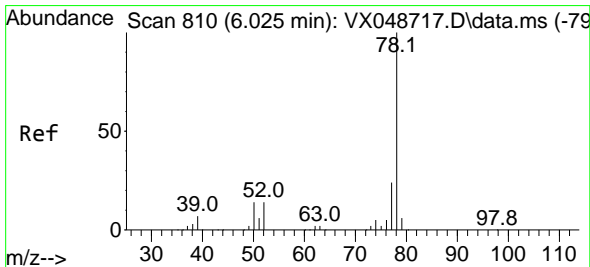
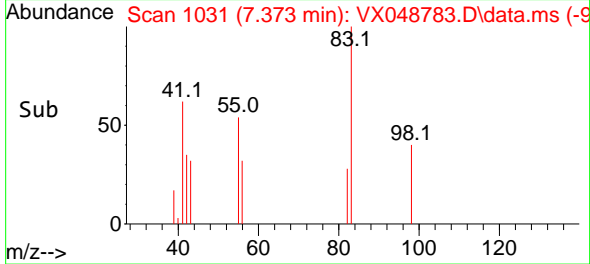
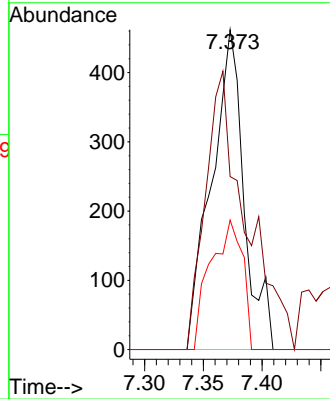


#39
 Methylcyclohexane
 Concen: 0.204 ug/l
 RT: 7.373 min Scan# 1031
 Delta R.T. 0.006 min
 Lab File: VX048783.D
 Acq: 09 Dec 2025 14:48

Instrument :
 MSVOA_X
 ClientSampleId :
 CHASE-G

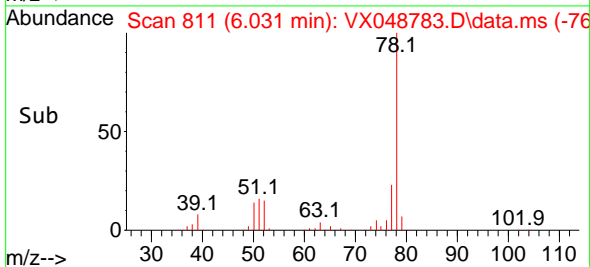
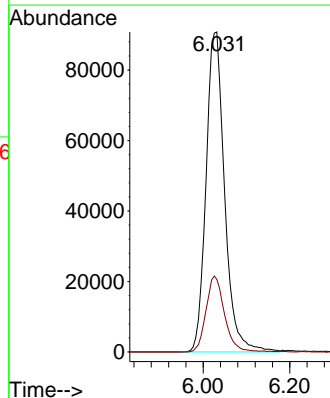
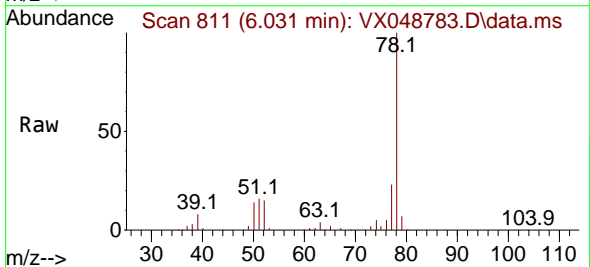


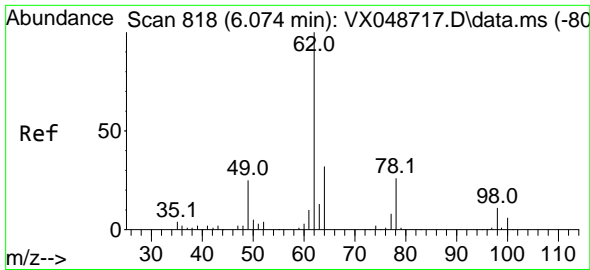
Tgt Ion: 83 Resp: 890
 Ion Ratio Lower Upper
 83 100
 55 54.1 60.6 90.8#
 98 40.5 39.3 58.9



#40
 Benzene
 Concen: 24.718 ug/l
 RT: 6.031 min Scan# 811
 Delta R.T. 0.006 min
 Lab File: VX048783.D
 Acq: 09 Dec 2025 14:48

Tgt Ion: 78 Resp: 270598
 Ion Ratio Lower Upper
 78 100
 77 22.7 18.8 28.2

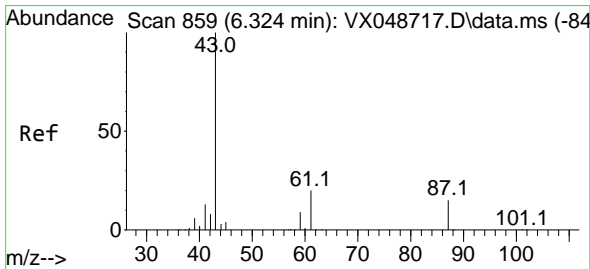
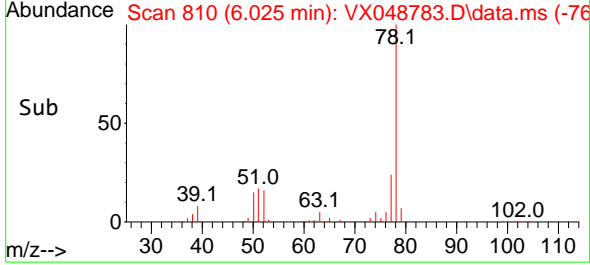
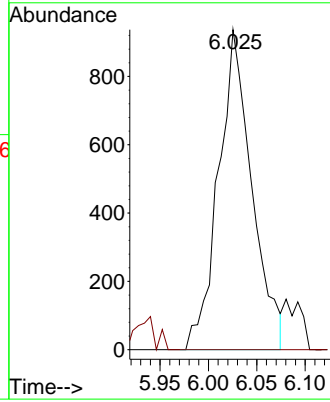
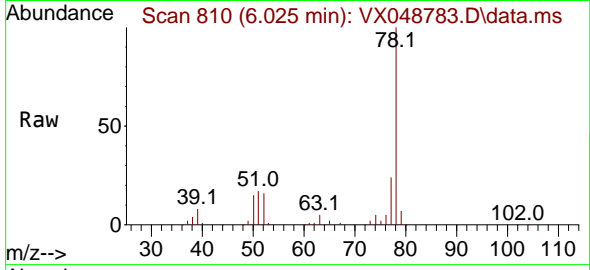




#42
 1,2-Dichloroethane
 Concen: 0.581 ug/l
 RT: 6.025 min Scan# 810
 Delta R.T. -0.049 min
 Lab File: VX048783.D
 Acq: 09 Dec 2025 14:48

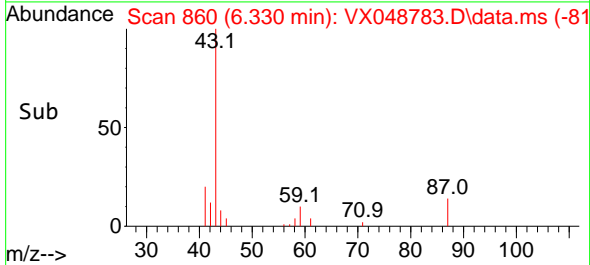
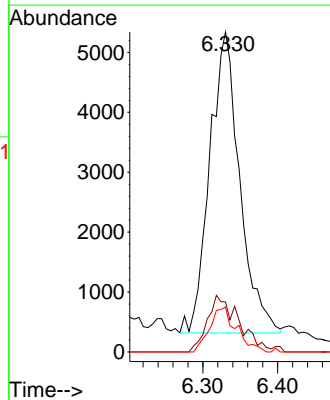
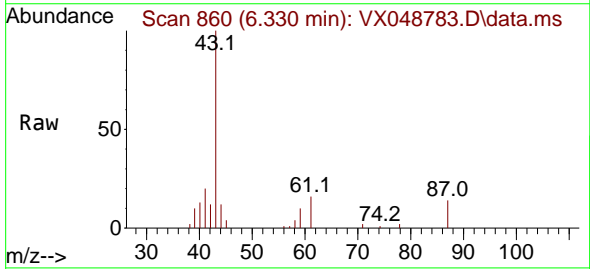
Instrument :
 MSVOA_X
 ClientSampleId :
 CHASE-G

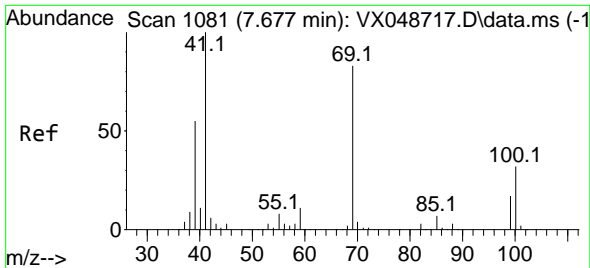
Tgt Ion: 62 Resp: 2253
 Ion Ratio Lower Upper
 62 100
 98 0.0 0.0 20.2



#43
 Isopropyl Acetate
 Concen: 2.098 ug/l
 RT: 6.330 min Scan# 860
 Delta R.T. 0.006 min
 Lab File: VX048783.D
 Acq: 09 Dec 2025 14:48

Tgt Ion: 43 Resp: 14019
 Ion Ratio Lower Upper
 43 100
 61 19.8 16.8 25.2
 87 13.4 11.8 17.6

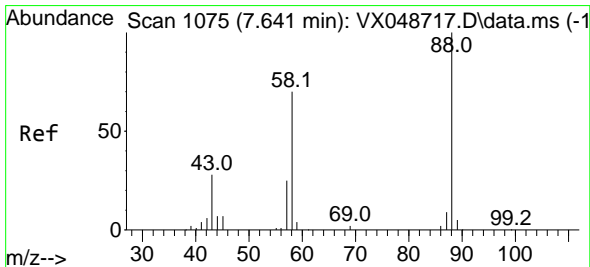
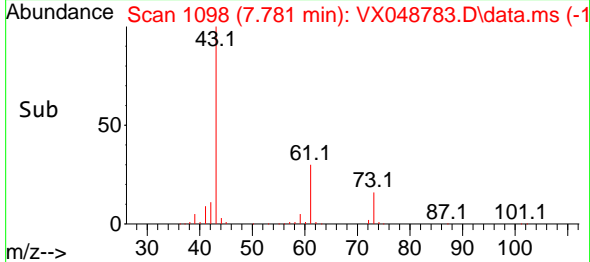
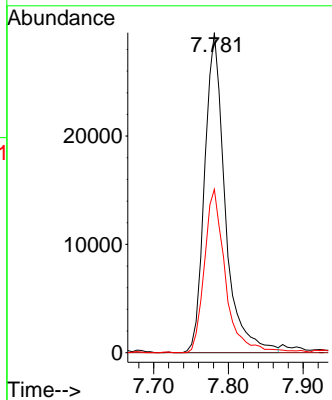
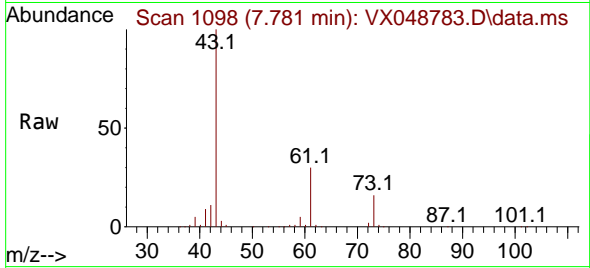




#48
 Methyl methacrylate
 Concen: 16.793 ug/l
 RT: 7.781 min Scan# 1098
 Delta R.T. 0.104 min
 Lab File: VX048783.D
 Acq: 09 Dec 2025 14:48

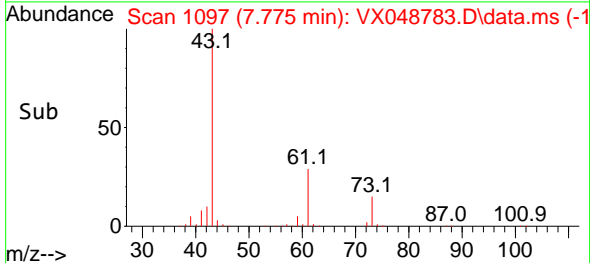
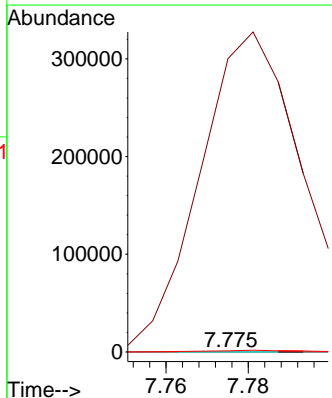
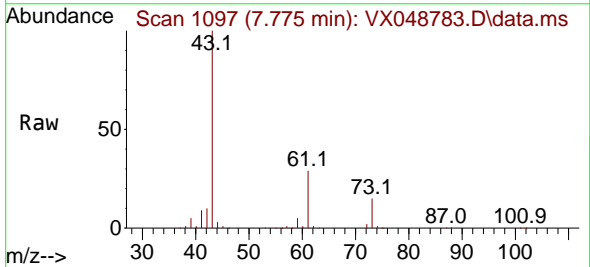
Instrument : MSVOA_X
 ClientSampleId : CHASE-G

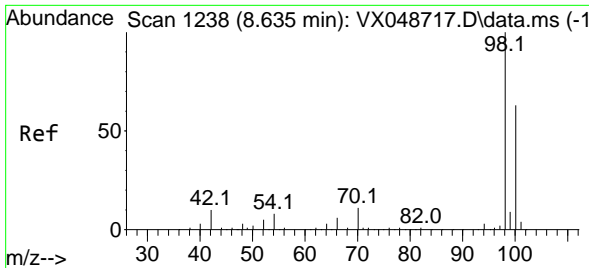
Tgt Ion: 41 Resp: 56446
 Ion Ratio Lower Upper
 41 100
 69 0.0 68.5 102.7#
 39 52.5 43.5 65.3



#49
 1,4-Dioxane
 Concen: 0.498 ug/l
 RT: 7.775 min Scan# 1097
 Delta R.T. 0.134 min
 Lab File: VX048783.D
 Acq: 09 Dec 2025 14:48

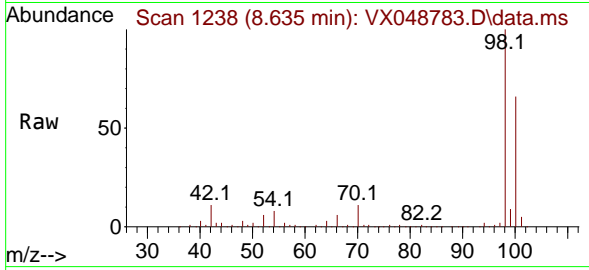
Tgt Ion: 88 Resp: 23
 Ion Ratio Lower Upper
 88 100
 43 2755347.8 28.6 43.0#
 58 13204.3 58.0 87.0#



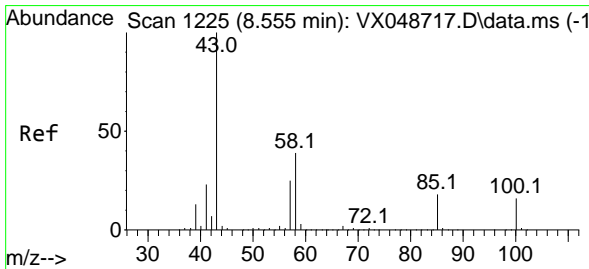
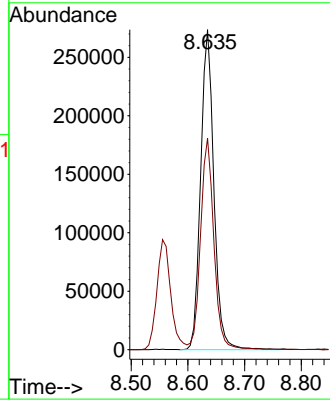
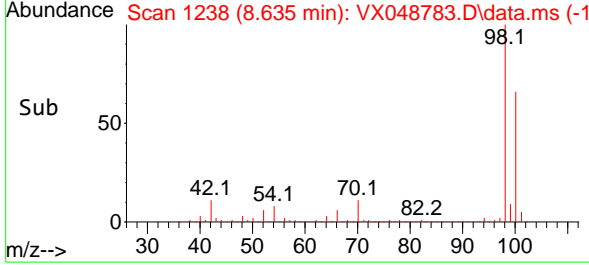


#50
 Toluene-d8
 Concen: 46.858 ug/l
 RT: 8.635 min Scan# 11
 Delta R.T. 0.000 min
 Lab File: VX048783.D
 Acq: 09 Dec 2025 14:48

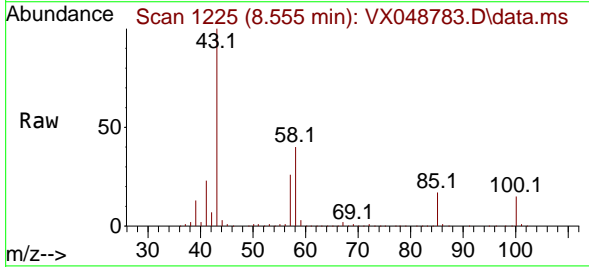
Instrument :
 MSVOA_X
 ClientSampleId :
 CHASE-G



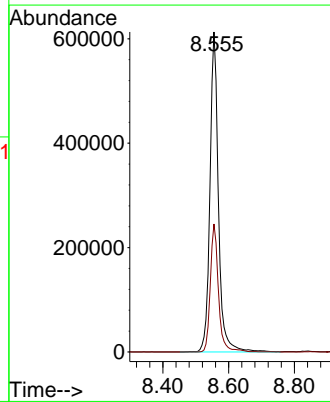
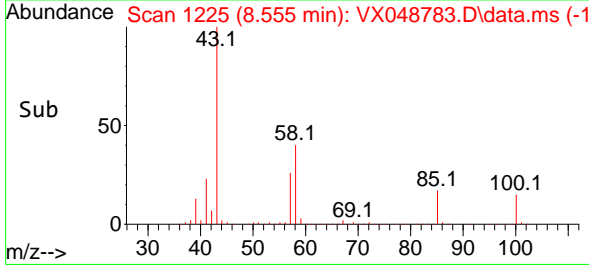
Tgt Ion: 98 Resp: 442865
 Ion Ratio Lower Upper
 98 100
 100 66.6 53.4 80.0

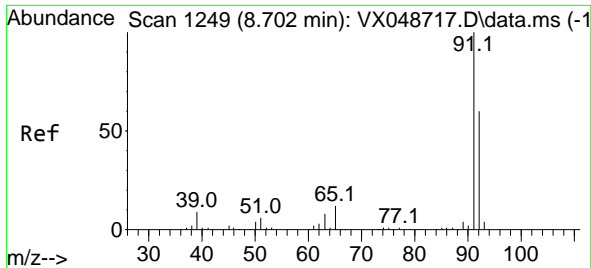


#51
 4-Methyl-2-Pentanone
 Concen: 265.988 ug/l
 RT: 8.555 min Scan# 1225
 Delta R.T. 0.000 min
 Lab File: VX048783.D
 Acq: 09 Dec 2025 14:48



Tgt Ion: 43 Resp: 1103152
 Ion Ratio Lower Upper
 43 100
 58 38.5 32.2 48.4

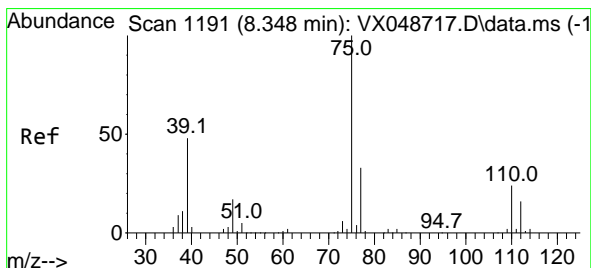
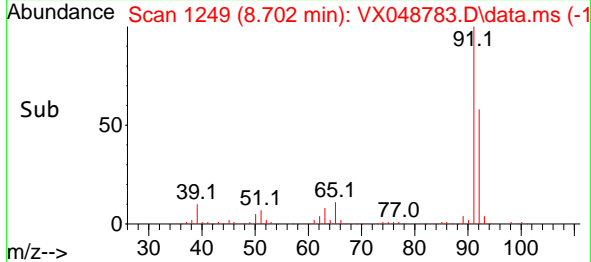
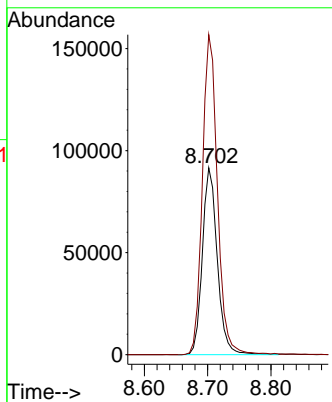
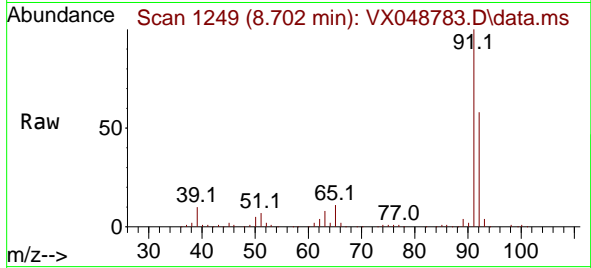




#52
 Toluene
 Concen: 22.804 ug/l
 RT: 8.702 min Scan# 1122
 Delta R.T. 0.000 min
 Lab File: VX048783.D
 Acq: 09 Dec 2025 14:48

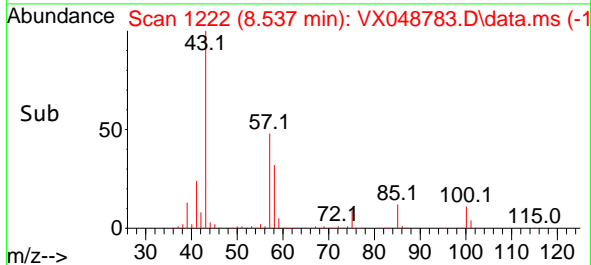
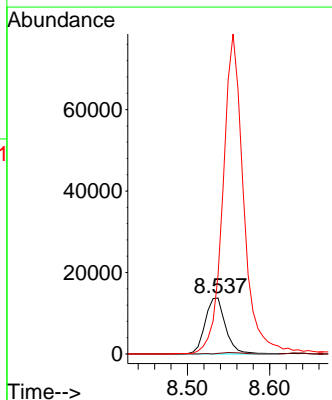
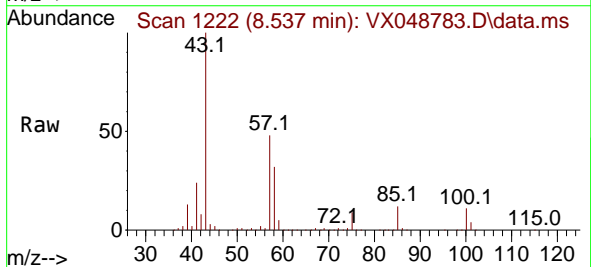
Instrument :
 MSVOA_X
 ClientSampleId :
 CHASE-G

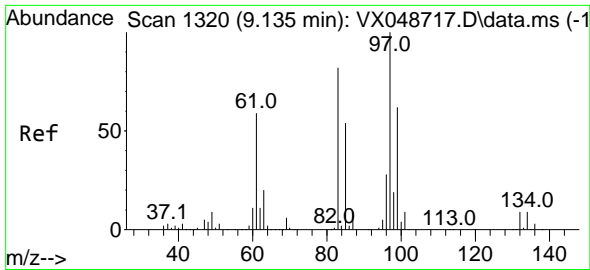
Tgt Ion: 92 Resp: 150542
 Ion Ratio Lower Upper
 92 100
 91 173.4 136.3 204.5



#54
 cis-1,3-Dichloropropene
 Concen: 5.355 ug/l
 RT: 8.537 min Scan# 1222
 Delta R.T. 0.189 min
 Lab File: VX048783.D
 Acq: 09 Dec 2025 14:48

Tgt Ion: 75 Resp: 23688
 Ion Ratio Lower Upper
 75 100
 77 1.3 26.1 39.1#
 39 139.7 38.2 57.4#



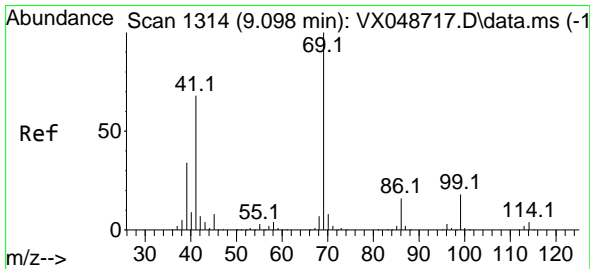
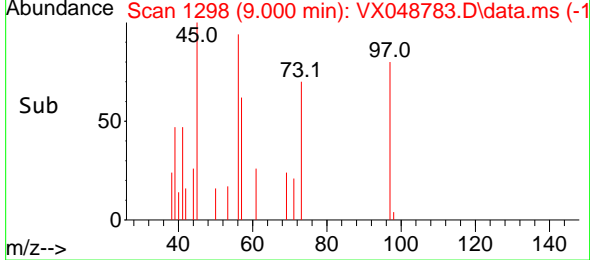
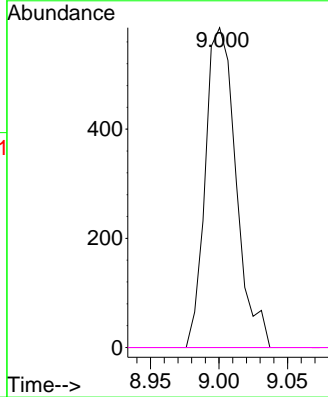
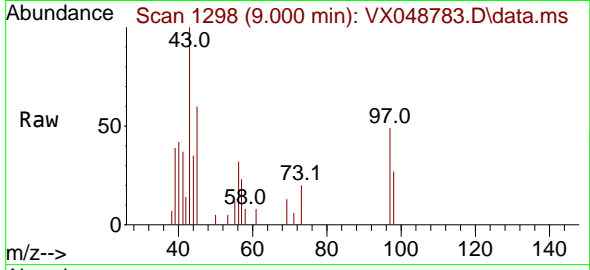


#55
 1,1,2-Trichloroethane
 Concen: 0.344 ug/l
 RT: 9.000 min Scan# 1100
 Delta R.T. -0.134 min
 Lab File: VX048783.D
 Acq: 09 Dec 2025 14:48

Instrument :
 MSVOA_X
 ClientSampleId :
 CHASE-G

Tgt Ion: 97 Resp: 913

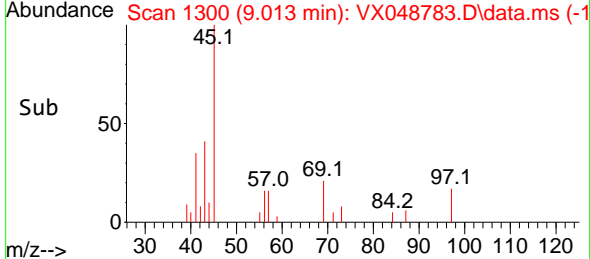
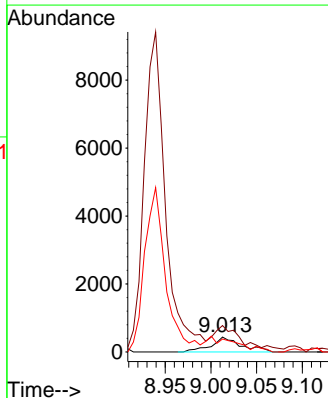
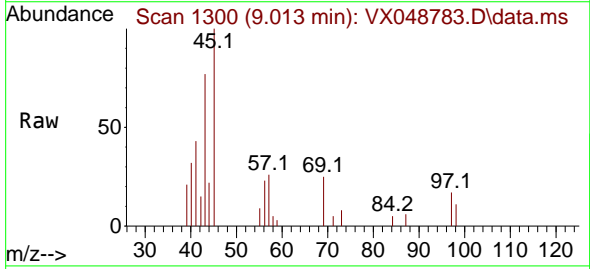
Ion	Ratio	Lower	Upper
97	100		
83	0.0	66.0	99.0#
85	0.0	43.2	64.8#
99	0.0	50.0	75.0#

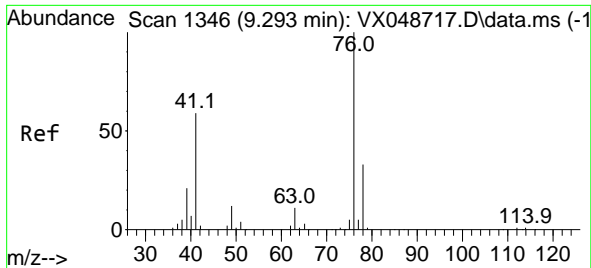


#56
 Ethyl methacrylate
 Concen: 0.237 ug/l
 RT: 9.013 min Scan# 1300
 Delta R.T. -0.085 min
 Lab File: VX048783.D
 Acq: 09 Dec 2025 14:48

Tgt Ion: 69 Resp: 986

Ion	Ratio	Lower	Upper
69	100		
41	162.1	53.4	80.2#
39	0.0	27.5	41.3#

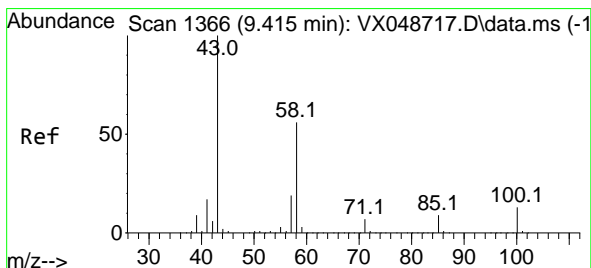
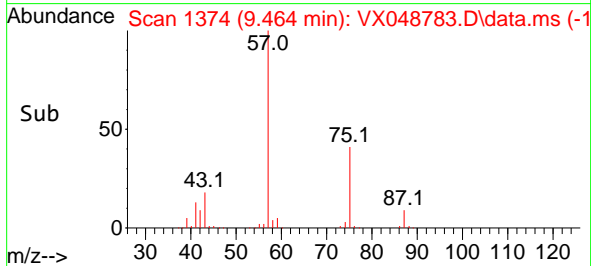
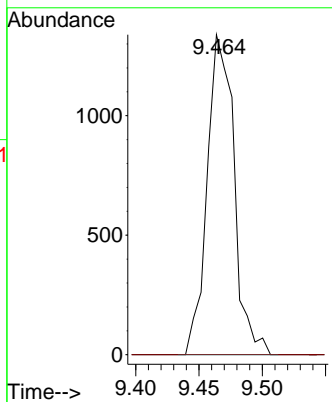
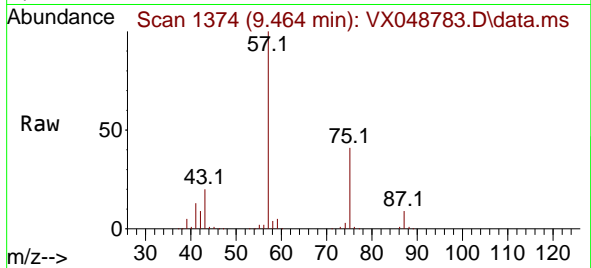




#57
 1,3-Dichloropropane
 Concen: 0.449 ug/l
 RT: 9.464 min Scan# 1374
 Delta R.T. 0.171 min
 Lab File: VX048783.D
 Acq: 09 Dec 2025 14:48

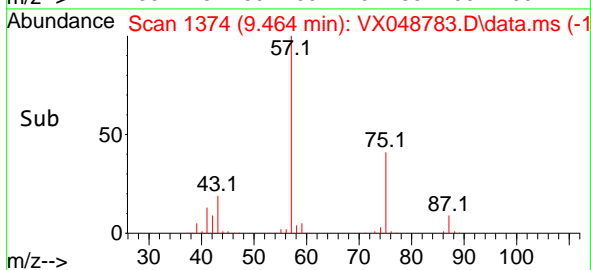
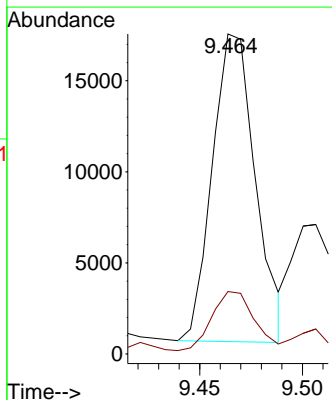
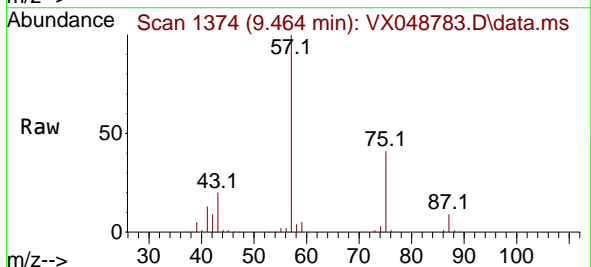
Instrument : MSVOA_X
 ClientSampleId : CHASE-G

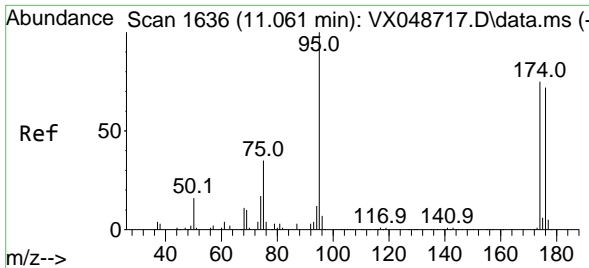
Tgt Ion: 76 Resp: 1981
 Ion Ratio Lower Upper
 76 100
 78 0.0 26.0 39.0#



#59
 2-Hexanone
 Concen: 8.485 ug/l
 RT: 9.464 min Scan# 1374
 Delta R.T. 0.049 min
 Lab File: VX048783.D
 Acq: 09 Dec 2025 14:48

Tgt Ion: 43 Resp: 24702
 Ion Ratio Lower Upper
 43 100
 58 21.0 27.8 83.4#



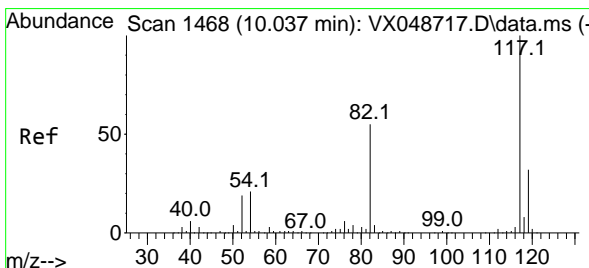
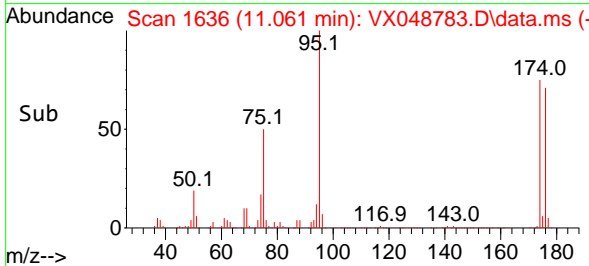
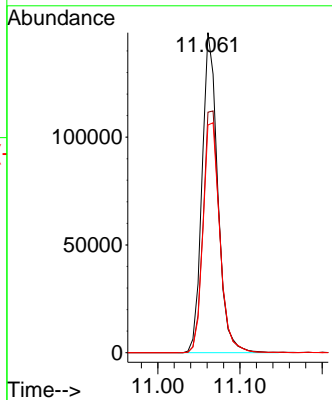
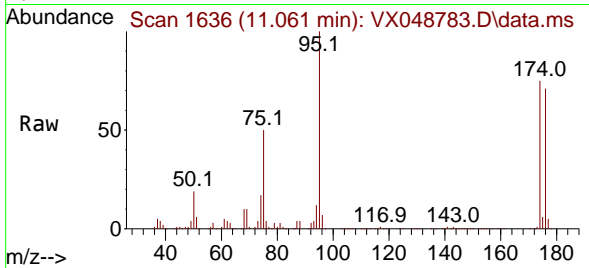


#62
 4-Bromofluorobenzene
 Concen: 60.305 ug/l
 RT: 11.061 min Scan# 1
 Delta R.T. 0.000 min
 Lab File: VX048783.D
 Acq: 09 Dec 2025 14:48

Instrument :
 MSVOA_X
 ClientSampleId :
 CHASE-G

Tgt Ion: 95 Resp: 196539

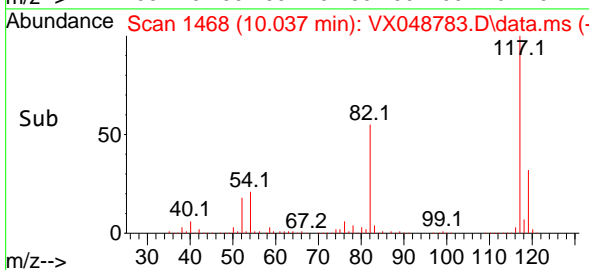
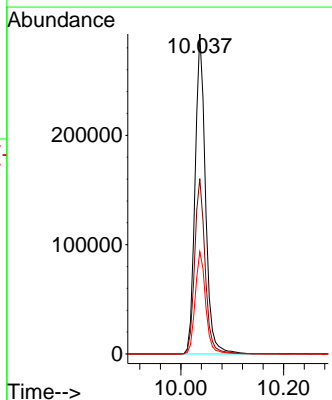
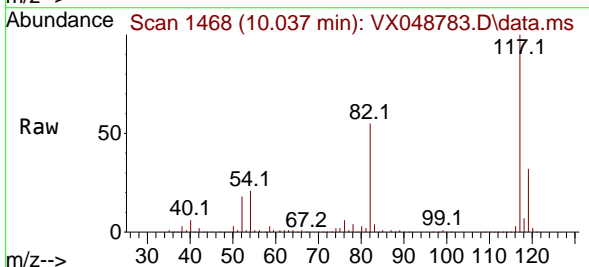
Ion	Ratio	Lower	Upper
95	100		
174	79.7	0.0	157.8
176	76.9	0.0	154.0

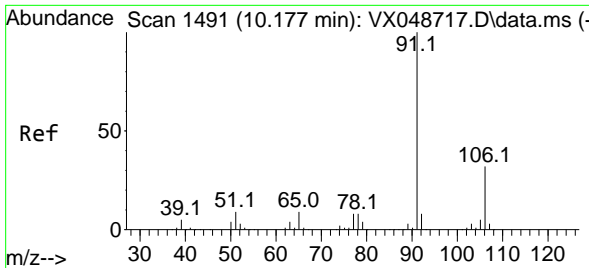


#63
 Chlorobenzene-d5
 Concen: 50.000 ug/l
 RT: 10.037 min Scan# 1468
 Delta R.T. 0.000 min
 Lab File: VX048783.D
 Acq: 09 Dec 2025 14:48

Tgt Ion: 117 Resp: 411898

Ion	Ratio	Lower	Upper
117	100		
82	54.8	44.1	66.1
119	32.0	25.2	37.8

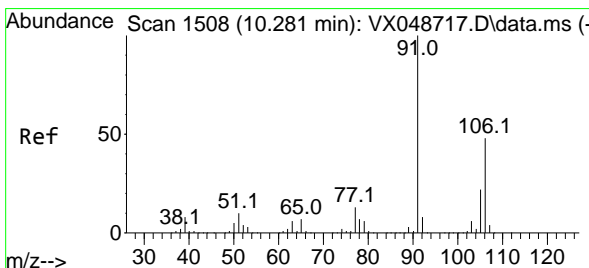
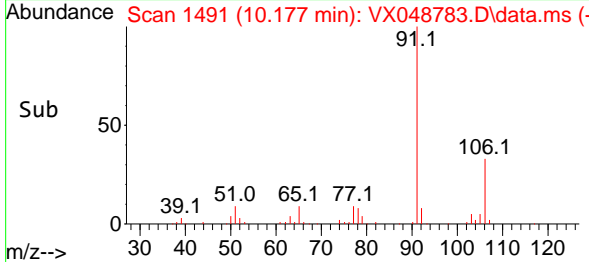
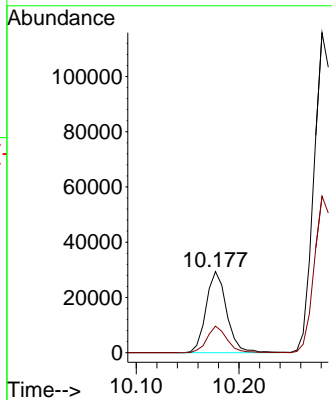
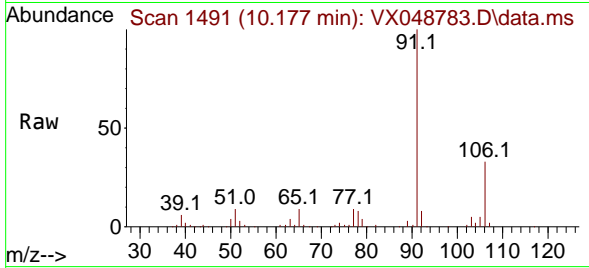




#67
 Ethyl Benzene
 Concen: 2.791 ug/l
 RT: 10.177 min Scan# 1491
 Delta R.T. 0.000 min
 Lab File: VX048783.D
 Acq: 09 Dec 2025 14:48

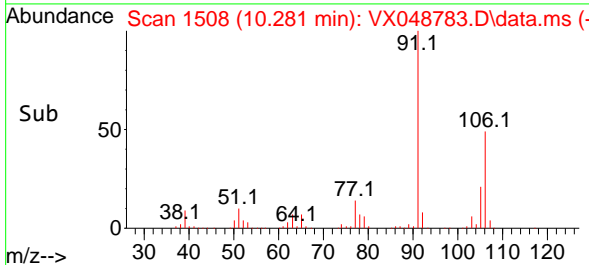
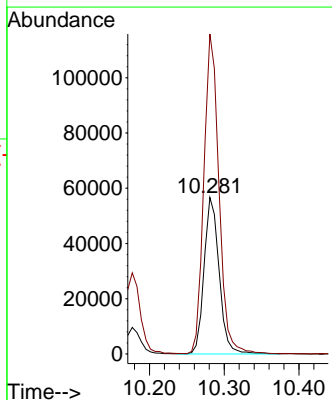
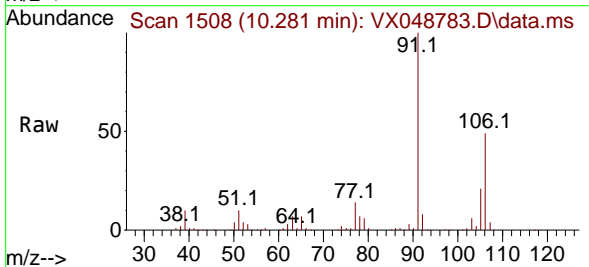
Instrument :
 MSVOA_X
 ClientSampleId :
 CHASE-G

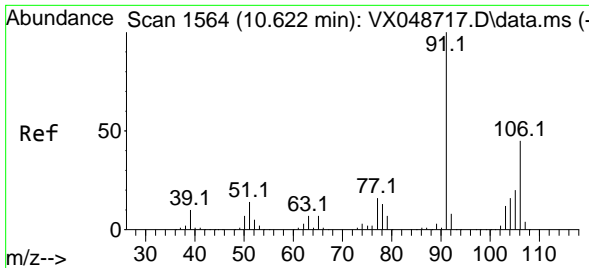
Tgt Ion: 91 Resp: 41066
 Ion Ratio Lower Upper
 91 100
 106 32.7 25.3 37.9



#68
 m/p-Xylenes
 Concen: 13.849 ug/l
 RT: 10.281 min Scan# 1508
 Delta R.T. 0.000 min
 Lab File: VX048783.D
 Acq: 09 Dec 2025 14:48

Tgt Ion: 106 Resp: 79369
 Ion Ratio Lower Upper
 106 100
 91 205.2 164.2 246.4

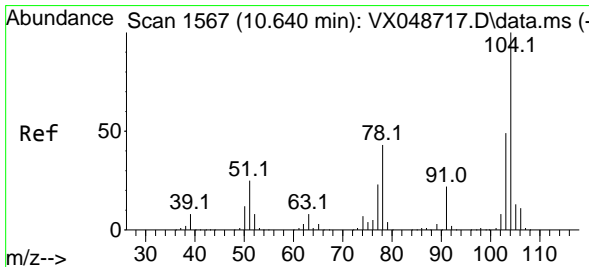
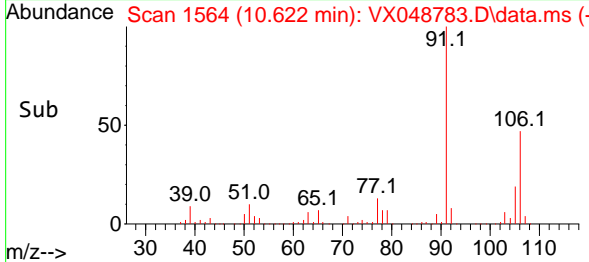
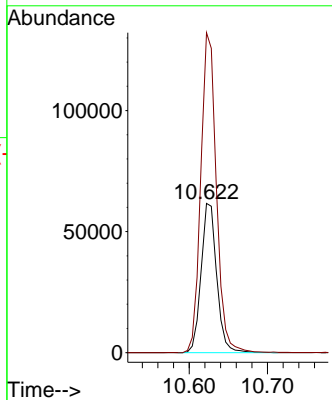
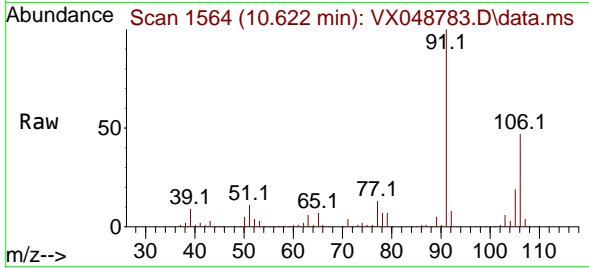




#69
 o-Xylene
 Concen: 15.878 ug/l
 RT: 10.622 min Scan# 1564
 Delta R.T. 0.000 min
 Lab File: VX048783.D
 Acq: 09 Dec 2025 14:48

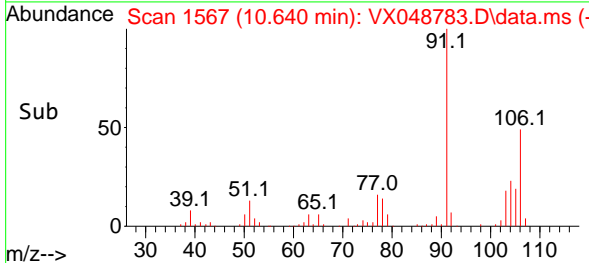
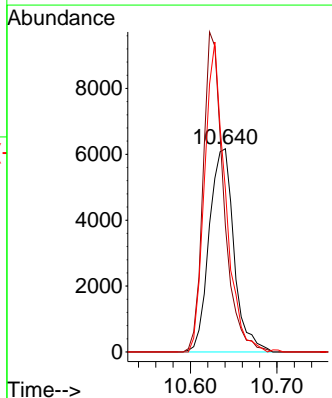
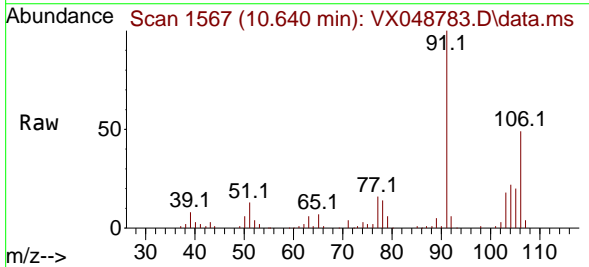
Instrument : MSVOA_X
 ClientSampleId : CHASE-G

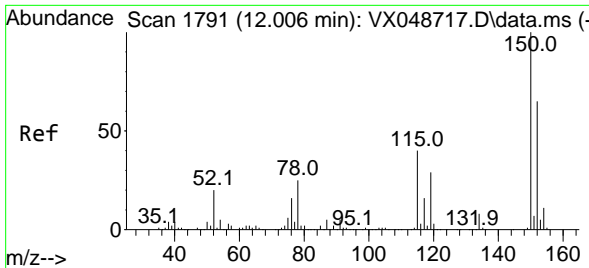
Tgt Ion:106 Resp: 85268
 Ion Ratio Lower Upper
 106 100
 91 214.3 108.1 324.3



#70
 Styrene
 Concen: 1.330 ug/l
 RT: 10.640 min Scan# 1567
 Delta R.T. 0.000 min
 Lab File: VX048783.D
 Acq: 09 Dec 2025 14:48

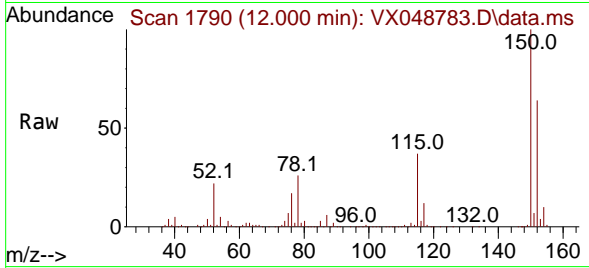
Tgt Ion:104 Resp: 12265
 Ion Ratio Lower Upper
 104 100
 78 130.0 40.6 60.8#
 103 128.2 43.4 65.2#



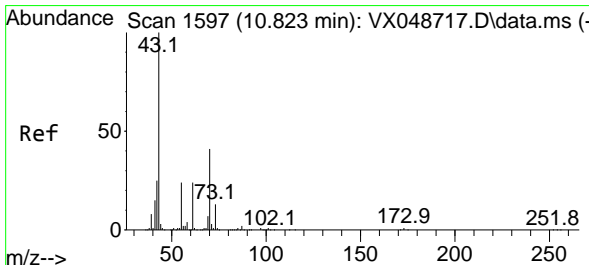
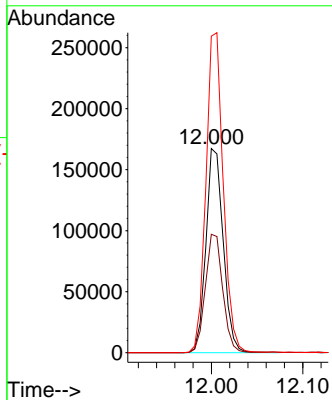
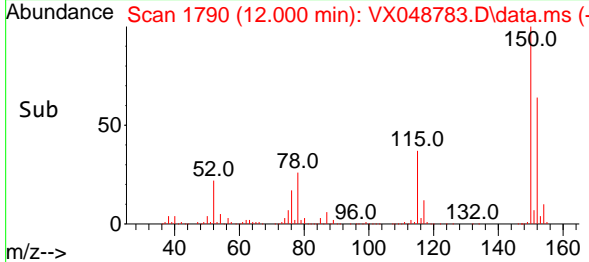


#72
 1,4-Dichlorobenzene-d4
 Concen: 50.000 ug/l
 RT: 12.000 min Scan# 11
 Delta R.T. -0.006 min
 Lab File: VX048783.D
 Acq: 09 Dec 2025 14:48

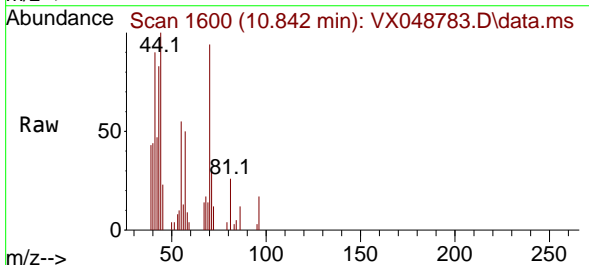
Instrument :
 MSVOA_X
 ClientSampleId :
 CHASE-G



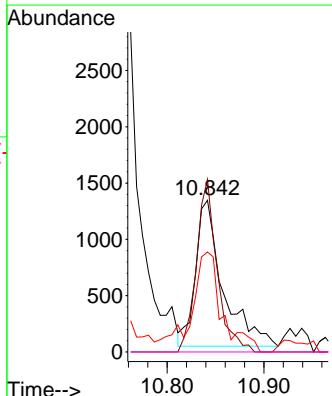
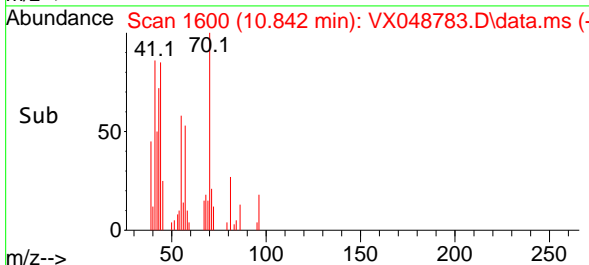
Tgt Ion:152 Resp: 219312
 Ion Ratio Lower Upper
 152 100
 115 58.5 42.1 126.4
 150 157.1 0.0 347.8

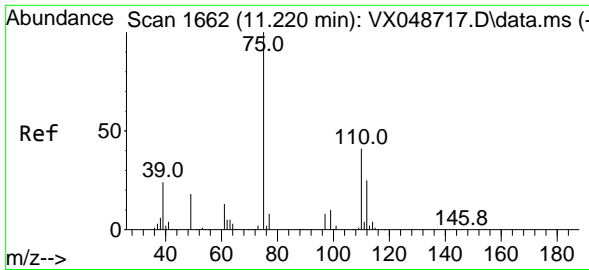


#74
 N-amy1 acetate
 Concen: 0.399 ug/l
 RT: 10.842 min Scan# 1600
 Delta R.T. 0.018 min
 Lab File: VX048783.D
 Acq: 09 Dec 2025 14:48



Tgt Ion: 43 Resp: 2562
 Ion Ratio Lower Upper
 43 100
 70 89.4 33.9 50.9#
 55 75.0 19.1 28.7#
 61 0.0 19.0 28.6#

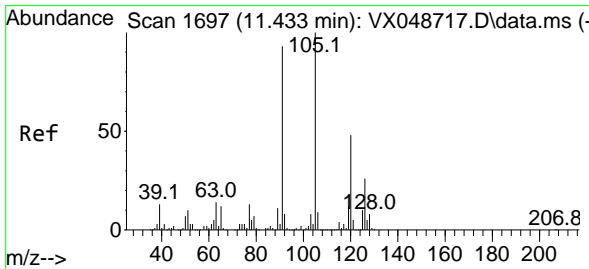
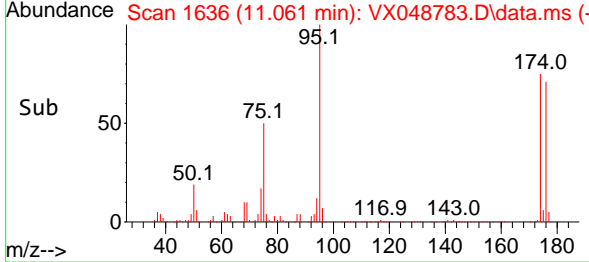
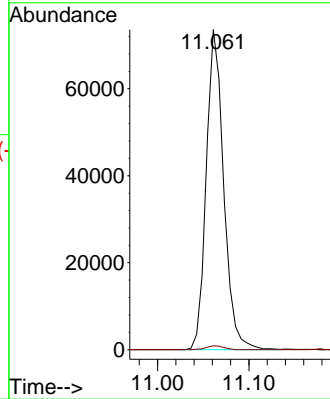
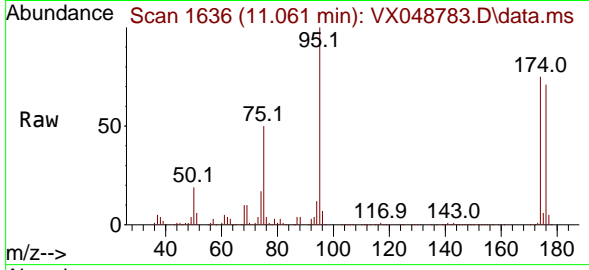




#76
 1,2,3-Trichloropropane
 Concen: 23.823 ug/l
 RT: 11.061 min Scan# 11061
 Delta R.T. -0.158 min
 Lab File: VX048783.D
 Acq: 09 Dec 2025 14:48

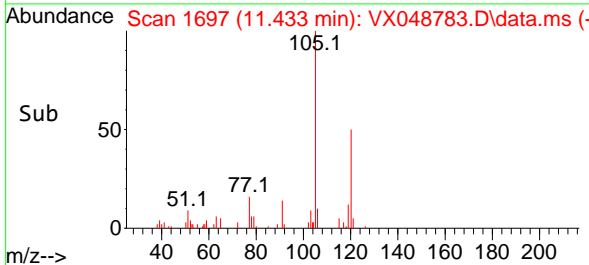
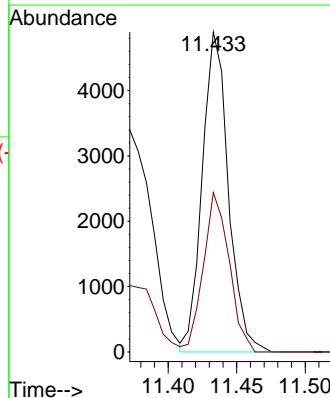
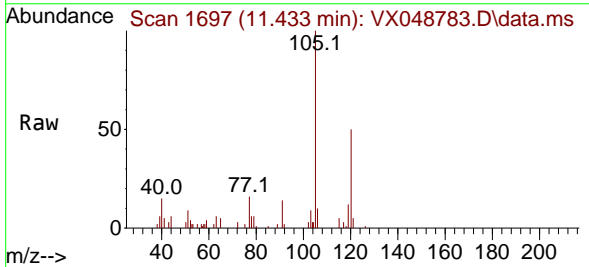
Instrument : MSVOA_X
 ClientSampleId : CHASE-G

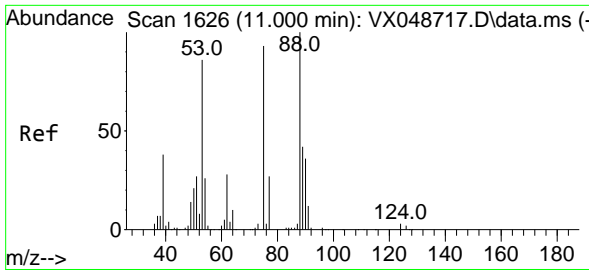
Tgt Ion: 75 Resp: 97312
 Ion Ratio Lower Upper
 75 100
 77 1.2 24.3 73.0#



#80
 1,3,5-Trimethylbenzene
 Concen: 0.534 ug/l
 RT: 11.433 min Scan# 1697
 Delta R.T. 0.000 min
 Lab File: VX048783.D
 Acq: 09 Dec 2025 14:48

Tgt Ion: 105 Resp: 6493
 Ion Ratio Lower Upper
 105 100
 120 49.2 24.4 73.2



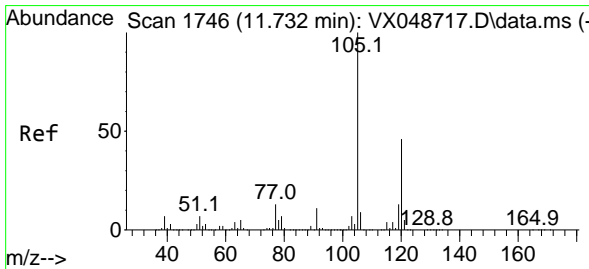
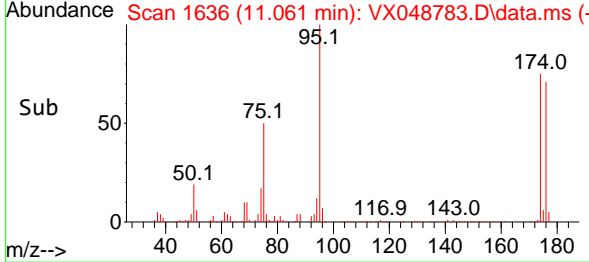
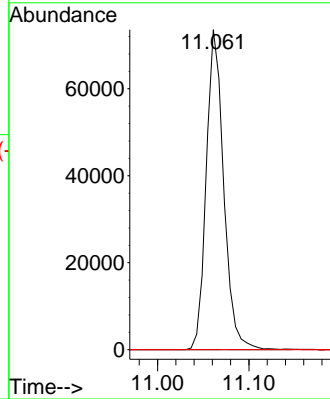
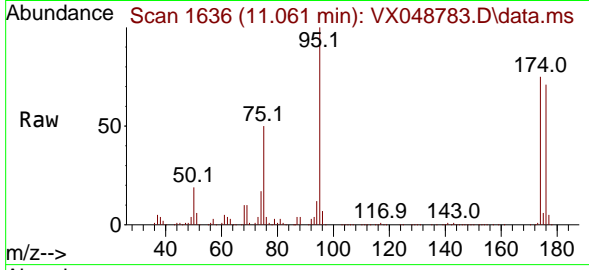


#81
 trans-1,4-Dichloro-2-butene
 Concen: 56.590 ug/l
 RT: 11.061 min Scan# 1100
 Delta R.T. 0.061 min
 Lab File: VX048783.D
 Acq: 09 Dec 2025 14:48

Instrument :
 MSVOA_X
 ClientSampleId :
 CHASE-G

Tgt Ion: 75 Resp: 97312

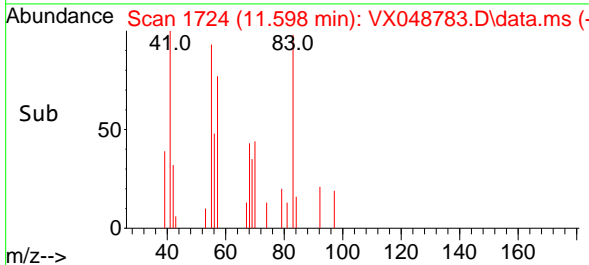
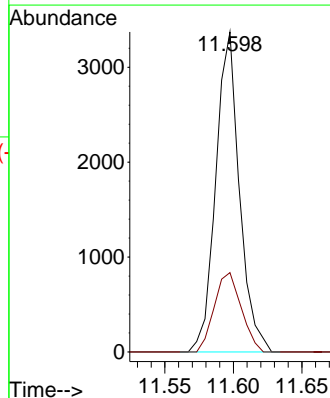
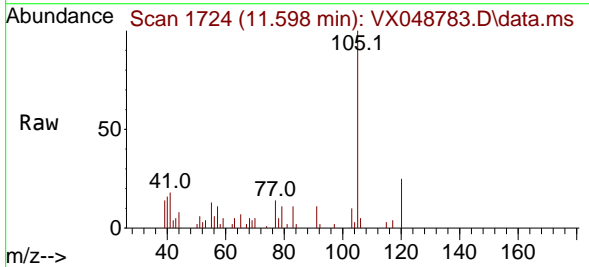
Ion	Ratio	Lower	Upper
75	100		
53	0.0	79.9	119.9#
89	0.0	67.1	100.7#

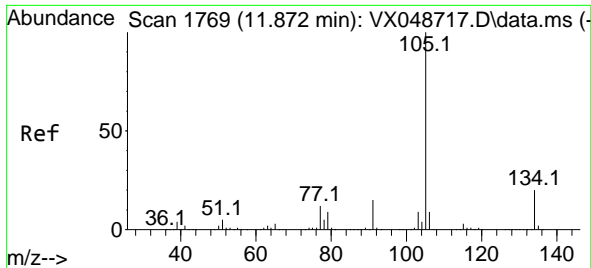


#84
 1,2,4-Trimethylbenzene
 Concen: 0.330 ug/l
 RT: 11.598 min Scan# 1724
 Delta R.T. -0.134 min
 Lab File: VX048783.D
 Acq: 09 Dec 2025 14:48

Tgt Ion: 105 Resp: 4050

Ion	Ratio	Lower	Upper
105	100		
120	28.2	22.3	66.8

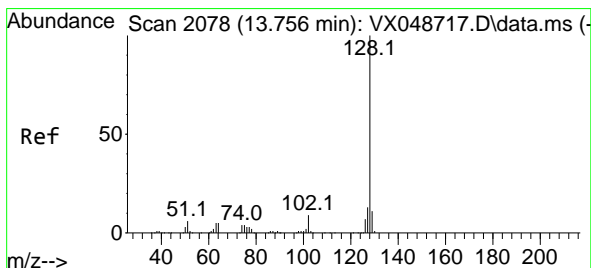
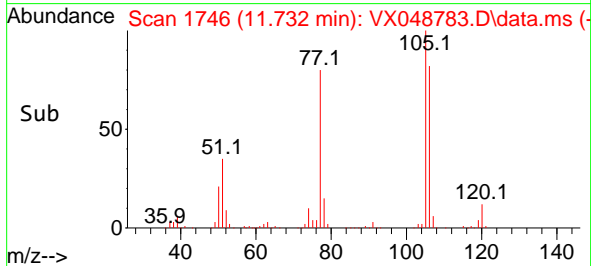
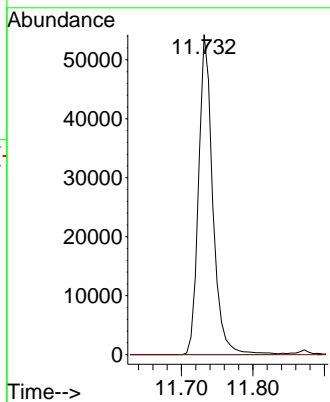
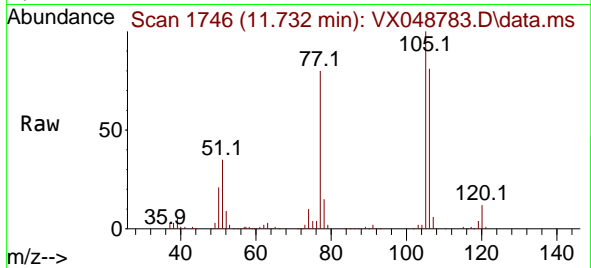




#85
 sec-Butylbenzene
 Concen: 4.884 ug/l
 RT: 11.732 min Scan# 11
 Delta R.T. -0.140 min
 Lab File: VX048783.D
 Acq: 09 Dec 2025 14:48

Instrument :
 MSVOA_X
 ClientSampleId :
 CHASE-G

Tgt Ion:105 Resp: 74707
 Ion Ratio Lower Upper
 105 100
 134 0.0 9.8 29.5#



#95
 Naphthalene
 Concen: 19.012 ug/l
 RT: 13.756 min Scan# 2078
 Delta R.T. 0.000 min
 Lab File: VX048783.D
 Acq: 09 Dec 2025 14:48

Tgt Ion:128 Resp: 231885
 Ion Ratio Lower Upper
 128 100
 127 12.2 10.2 15.2
 129 10.9 8.6 13.0

