

Data Path : Z:\voasrv\HPCHEM1\MSVOA_X\Data\VX120925\
 Data File : VX048784.D
 Acq On : 09 Dec 2025 15:08
 Operator : JC/MD
 Sample : Q3803-08
 Misc : 5.0mL/MSVOA_X/WATER
 ALS Vial : 18 Sample Multiplier: 1

Instrument :
 MSVOA_X
 ClientSampleId :
 CHASE-H

Quant Time: Dec 10 00:23:45 2025
 Quant Method : Z:\voasrv\HPCHEM1\MSVOA_X\Method\82X120425W.M
 Quant Title : SW846 8260
 QLast Update : Fri Dec 05 03:27:34 2025
 Response via : Initial Calibration

Compound	R.T.	QIon	Response	Conc	Units	Dev(Min)
Internal Standards						
1) Pentafluorobenzene	5.544	168	162347	50.000	ug/l	0.00
34) 1,4-Difluorobenzene	6.745	114	324548	50.000	ug/l	0.00
63) Chlorobenzene-d5	10.037	117	333200	50.000	ug/l	0.00
72) 1,4-Dichlorobenzene-d4	12.006	152	184210	50.000	ug/l	0.00
System Monitoring Compounds						
33) 1,2-Dichloroethane-d4	5.940	65	112173	51.479	ug/l	0.00
Spiked Amount	50.000	Range 78 - 117	Recovery	=	102.960%	
35) Dibromofluoromethane	5.379	113	99922	44.715	ug/l	0.00
Spiked Amount	50.000	Range 75 - 124	Recovery	=	89.440%	
50) Toluene-d8	8.635	98	360768	46.057	ug/l	0.00
Spiked Amount	50.000	Range 92 - 112	Recovery	=	92.120%	
62) 4-Bromofluorobenzene	11.061	95	157205	58.200	ug/l	0.00
Spiked Amount	50.000	Range 83 - 123	Recovery	=	116.400%	
Target Compounds						
						Qvalue
11) Tert butyl alcohol	2.934	59	5501	15.637	ug/l	99
13) Acrolein	2.239	56	457	41.307	ug/l #	1
14) Allyl chloride	2.642	41	1010	0.319	ug/l #	27
15) Acrylonitrile	3.075	53	345	0.315	ug/l #	67
16) Acetone	2.374	43	96061	115.158	ug/l	99
17) Carbon Disulfide	2.514	76	1750	0.320	ug/l #	90
18) Methyl Acetate	2.703	43	3924	1.672	ug/l	97
20) Methylene Chloride	2.794	84	127017	60.919	ug/l	98
25) 2-Butanone	4.550	43	17559	14.262	ug/l	91
29) Tetrahydrofuran	4.995	42	332	0.353	ug/l #	30
31) Cyclohexane	5.458	56	3482	1.182	ug/l	92
36) 1,1-Dichloropropene	5.538	75	12752	4.166	ug/l #	48
37) Ethyl Acetate	4.550	43	17559	4.801	ug/l #	71
38) Carbon Tetrachloride	5.538	117	16491	4.757	ug/l #	14
39) Methylcyclohexane	7.360	83	3205	0.886	ug/l	88
40) Benzene	6.025	78	2558139	281.945	ug/l	99
42) 1,2-Dichloroethane	6.025	62	21179	6.595	ug/l #	73
43) Isopropyl Acetate	6.324	43	15054	2.718	ug/l #	91
48) Methyl methacrylate	7.781	41	55040	19.758	ug/l #	41
51) 4-Methyl-2-Pentanone	8.531	43	68649	19.972	ug/l #	35
52) Toluene	8.702	92	1021072	186.625	ug/l	100
53) t-1,3-Dichloropropene	8.702	75	11871	3.480	ug/l #	1
54) cis-1,3-Dichloropropene	8.531	75	22090	6.026	ug/l #	58
55) 1,1,2-Trichloroethane	8.994	97	7330	3.330	ug/l #	19
56) Ethyl methacrylate	8.994	69	768	0.223	ug/l #	1
57) 1,3-Dichloropropane	9.464	76	1797	0.491	ug/l #	42
59) 2-Hexanone	9.464	43	22391	9.280	ug/l #	59
67) Ethyl Benzene	10.177	91	106738	8.969	ug/l	100
68) m/p-Xylenes	10.281	106	200328	43.212	ug/l	99
69) o-Xylene	10.622	106	126850	29.200	ug/l	100
70) Styrene	10.640	104	43305	5.807	ug/l #	63
73) Isopropylbenzene	10.945	105	4629	0.373	ug/l	93
74) N-amyl acetate	10.835	43	5453	1.011	ug/l #	1
76) 1,2,3-Trichloropropane	11.061	75	78547	22.894	ug/l #	30
78) n-propylbenzene	11.287	91	9884	0.687	ug/l	94
79) 2-Chlorotoluene	11.360	91	5617	0.641	ug/l #	49

Data Path : Z:\voasrv\HPCHEM1\MSVOA_X\Data\VX120925\
 Data File : VX048784.D
 Acq On : 09 Dec 2025 15:08
 Operator : JC/MD
 Sample : Q3803-08
 Misc : 5.0mL/MSVOA_X/WATER
 ALS Vial : 18 Sample Multiplier: 1

Instrument :
 MSVOA_X
 ClientSampleId :
 CHASE-H

Quant Time: Dec 10 00:23:45 2025
 Quant Method : Z:\voasrv\HPCHEM1\MSVOA_X\Method\82X120425W.M
 Quant Title : SW846 8260
 QLast Update : Fri Dec 05 03:27:34 2025
 Response via : Initial Calibration

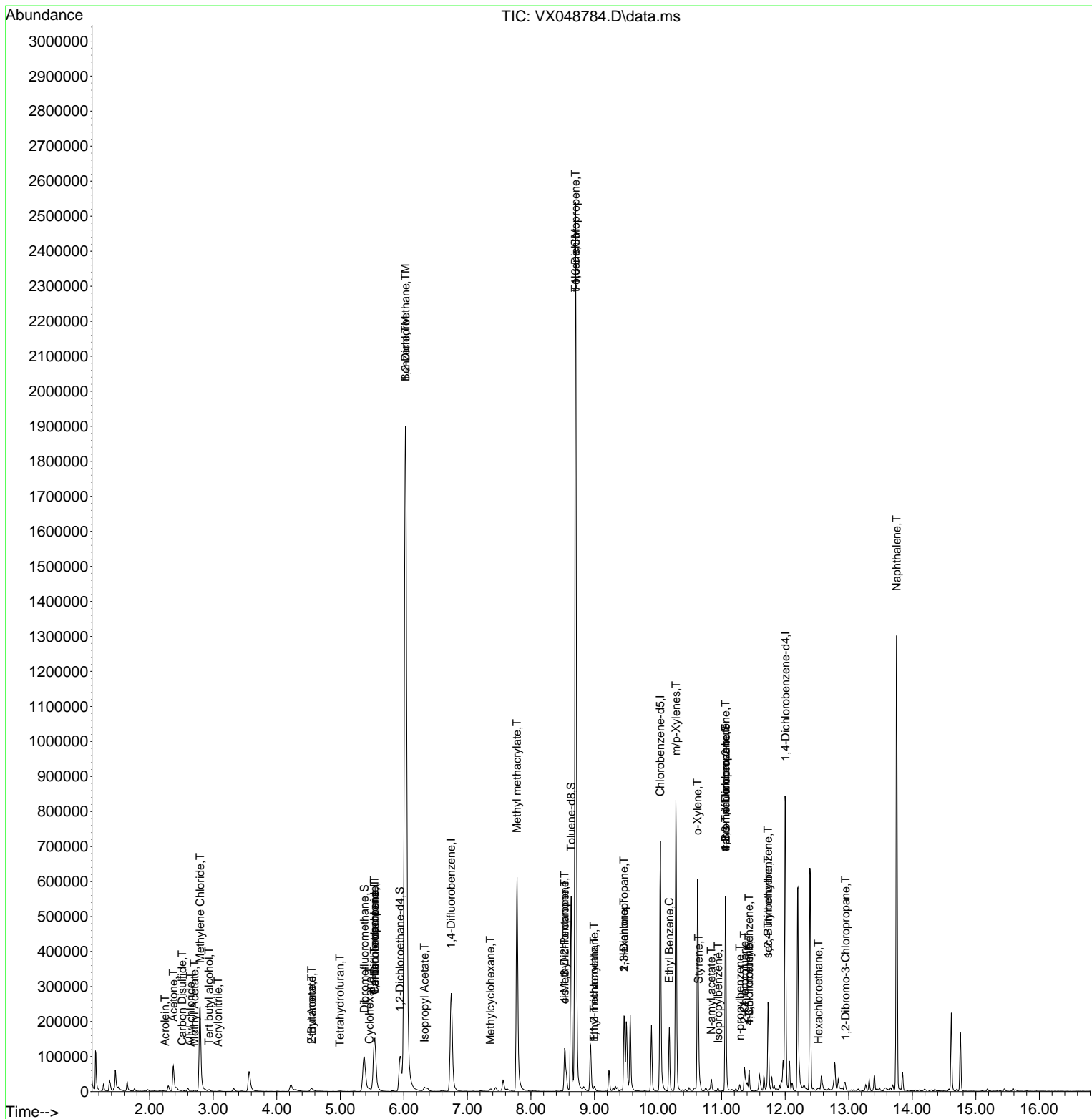
Compound	R.T.	QIon	Response	Conc	Units	Dev(Min)
80) 1,3,5-Trimethylbenzene	11.433	105	25203	2.470	ug/l	97
81) trans-1,4-Dichloro-2-b...	11.061	75	78547	54.381	ug/l #	3
82) 4-Chlorotoluene	11.433	91	3133	0.306	ug/l #	48
84) 1,2,4-Trimethylbenzene	11.732	105	100825	9.796	ug/l	85
85) sec-Butylbenzene	11.732	105	100825	7.847	ug/l #	57
90) Hexachloroethane	12.524	117	908	0.405	ug/l #	13
92) 1,2-Dibromo-3-Chloropr...	12.951	75	269	0.264	ug/l #	1
95) Naphthalene	13.756	128	803007	67.852	ug/l	100

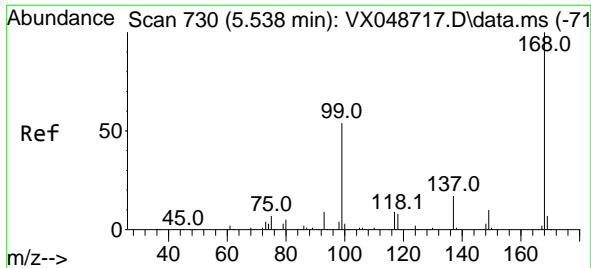
(#) = qualifier out of range (m) = manual integration (+) = signals summed

Data Path : Z:\voasrv\HPCHEM1\MSVOA_X\Data\VX120925\
 Data File : VX048784.D
 Acq On : 09 Dec 2025 15:08
 Operator : JC/MD
 Sample : Q3803-08
 Misc : 5.0mL/MSVOA_X/WATER
 ALS Vial : 18 Sample Multiplier: 1

Instrument :
 MSVOA_X
 ClientSampleId :
 CHASE-H

Quant Time: Dec 10 00:23:45 2025
 Quant Method : Z:\voasrv\HPCHEM1\MSVOA_X\Method\82X120425W.M
 Quant Title : SW846 8260
 QLast Update : Fri Dec 05 03:27:34 2025
 Response via : Initial Calibration

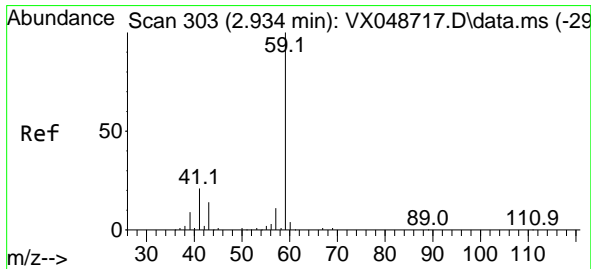
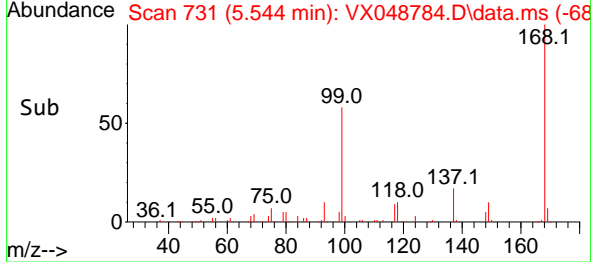
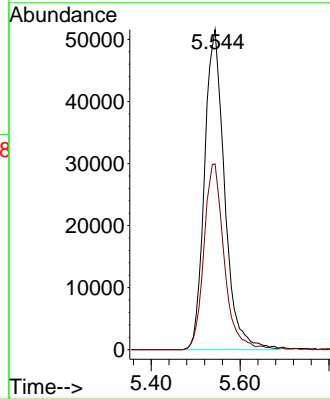
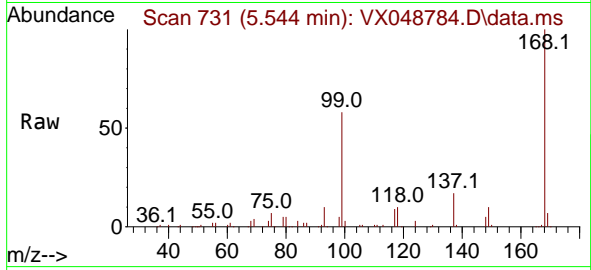




#1
 Pentafluorobenzene
 Concen: 50.000 ug/l
 RT: 5.544 min Scan# 71
 Delta R.T. 0.006 min
 Lab File: VX048784.D
 Acq: 09 Dec 2025 15:08

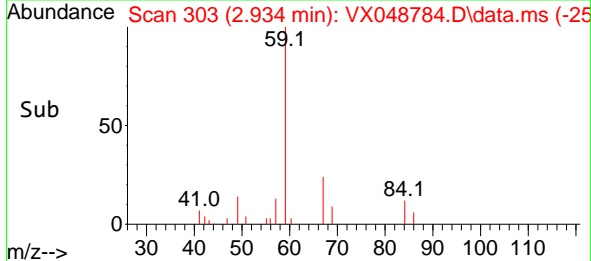
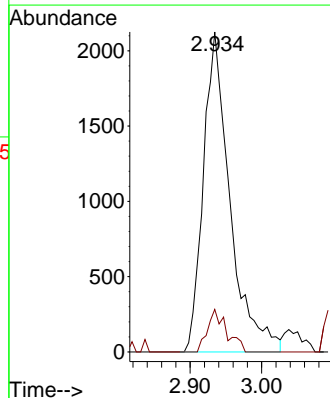
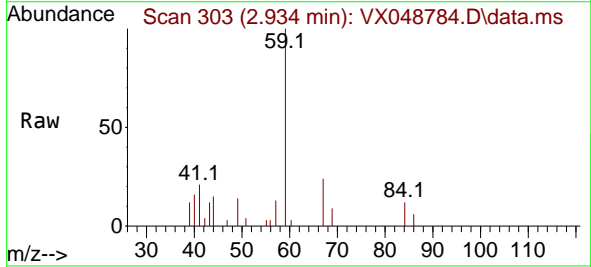
Instrument :
 MSVOA_X
 ClientSampleId :
 CHASE-H

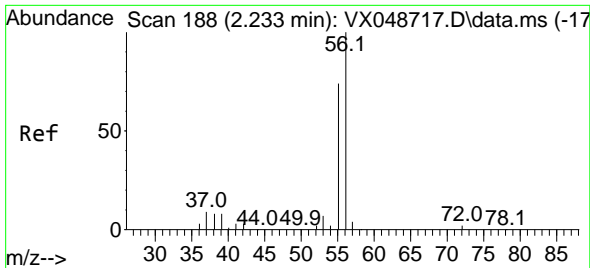
Tgt Ion:168 Resp: 162347
 Ion Ratio Lower Upper
 168 100
 99 58.1 44.2 66.4



#11
 Tert butyl alcohol
 Concen: 15.637 ug/l
 RT: 2.934 min Scan# 303
 Delta R.T. 0.000 min
 Lab File: VX048784.D
 Acq: 09 Dec 2025 15:08

Tgt Ion: 59 Resp: 5501
 Ion Ratio Lower Upper
 59 100
 57 9.5 8.1 12.1

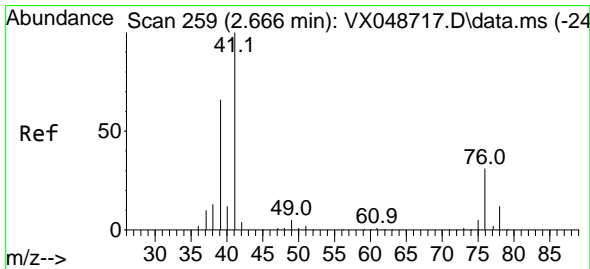
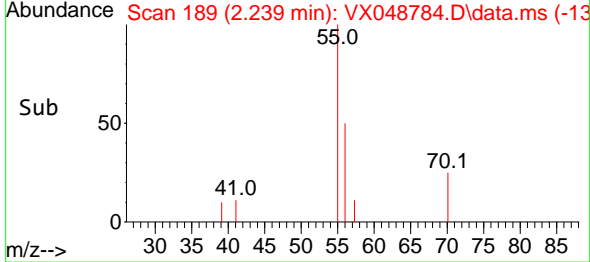
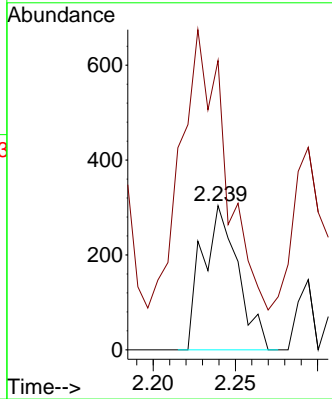
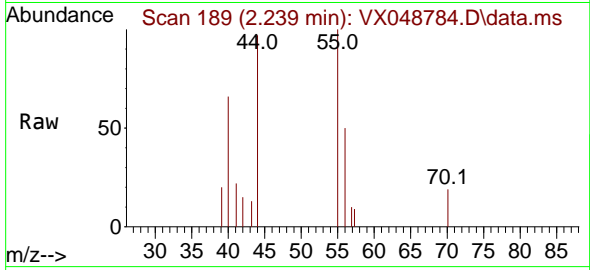




#13
 Acrolein
 Concen: 41.307 ug/l
 RT: 2.239 min Scan# 189
 Delta R.T. 0.006 min
 Lab File: VX048784.D
 Acq: 09 Dec 2025 15:08

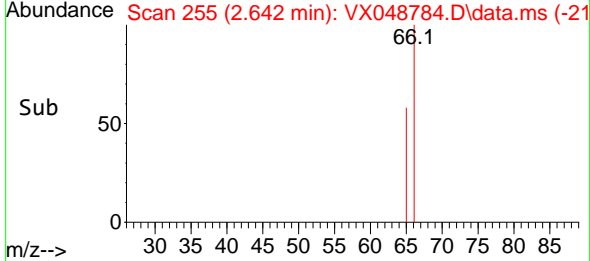
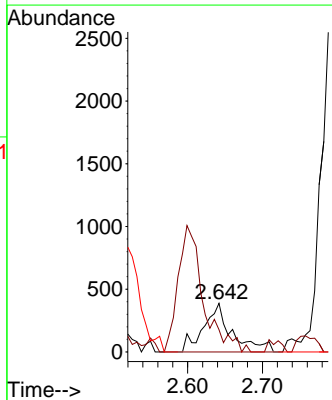
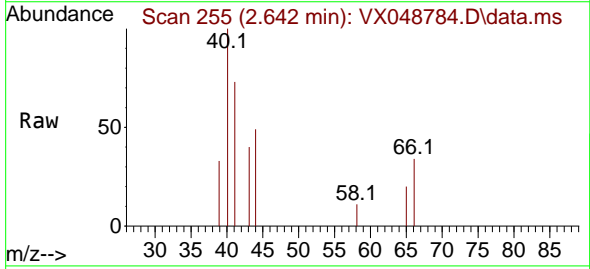
Instrument : MSVOA_X
 ClientSampleId : CHASE-H

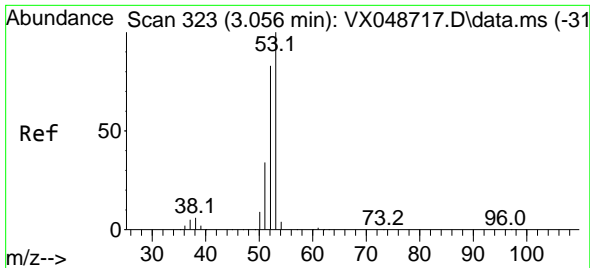
Tgt Ion: 56 Resp: 457
 Ion Ratio Lower Upper
 56 100
 55 320.1 55.8 83.6#



#14
 Allyl chloride
 Concen: 0.319 ug/l
 RT: 2.642 min Scan# 255
 Delta R.T. -0.024 min
 Lab File: VX048784.D
 Acq: 09 Dec 2025 15:08

Tgt Ion: 41 Resp: 1010
 Ion Ratio Lower Upper
 41 100
 39 0.0 49.8 74.6#
 76 0.0 27.3 40.9#

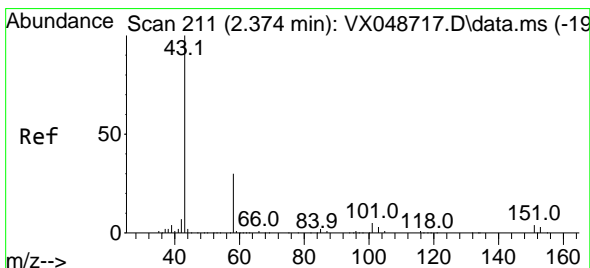
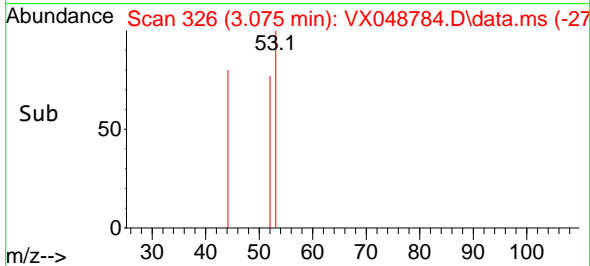
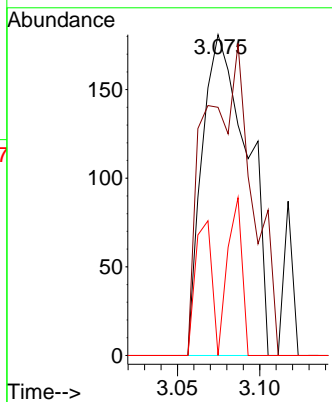
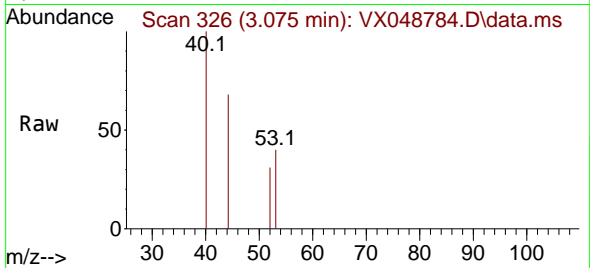




#15
 Acrylonitrile
 Concen: 0.315 ug/l
 RT: 3.075 min Scan# 31
 Delta R.T. 0.018 min
 Lab File: VX048784.D
 Acq: 09 Dec 2025 15:08

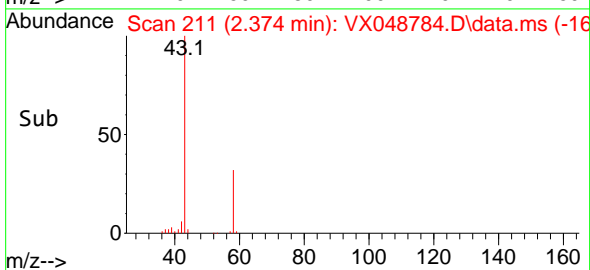
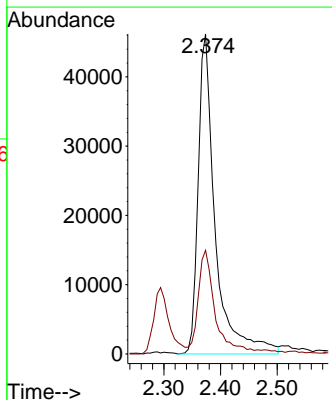
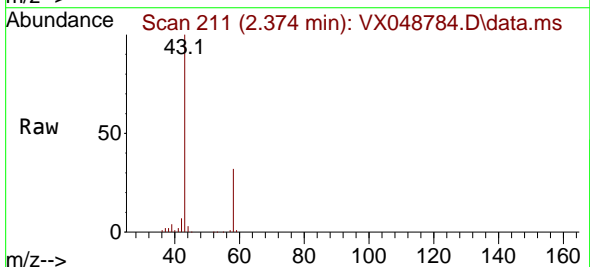
Instrument :
 MSVOA_X
 ClientSampleId :
 CHASE-H

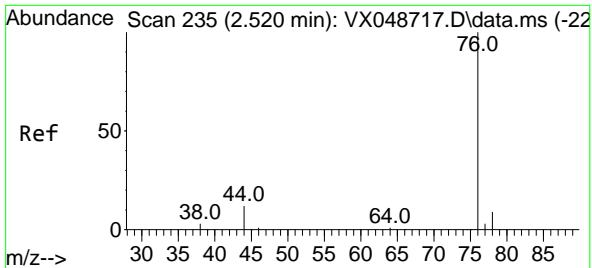
Tgt Ion	Resp	Lower	Upper
53	100		
52	101.4	66.3	99.5#
51	0.0	28.7	43.1#



#16
 Acetone
 Concen: 115.158 ug/l
 RT: 2.374 min Scan# 211
 Delta R.T. -0.000 min
 Lab File: VX048784.D
 Acq: 09 Dec 2025 15:08

Tgt Ion	Resp	Lower	Upper
43	100		
58	31.7	25.0	37.4

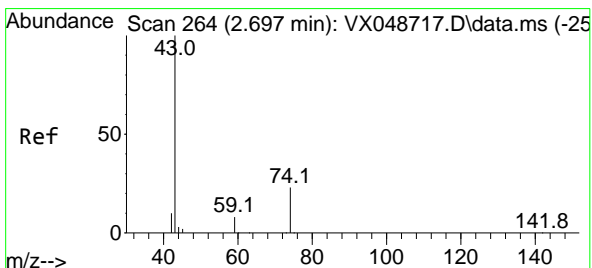
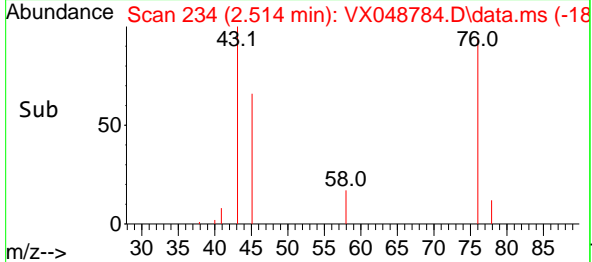
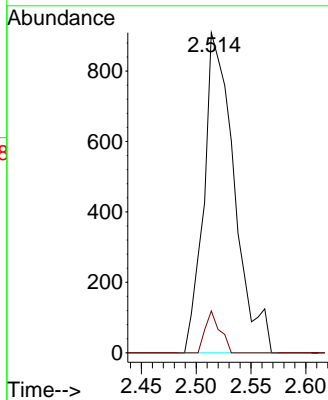
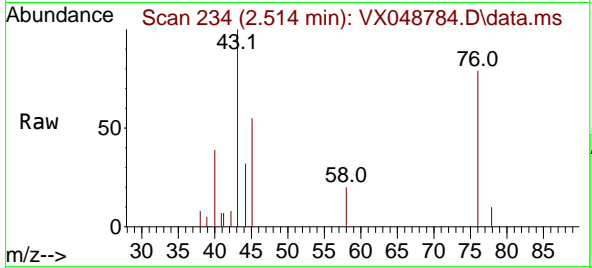




#17
 Carbon Disulfide
 Concen: 0.320 ug/l
 RT: 2.514 min Scan# 21
 Delta R.T. -0.006 min
 Lab File: VX048784.D
 Acq: 09 Dec 2025 15:08

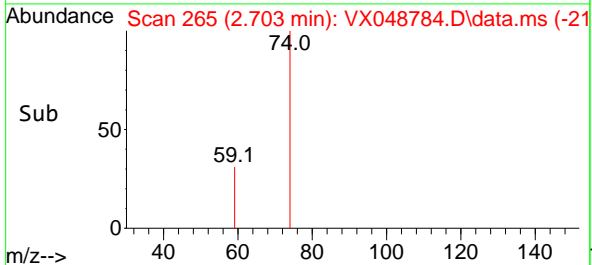
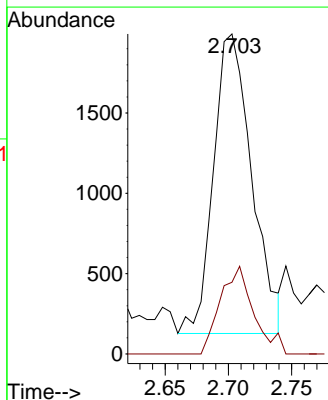
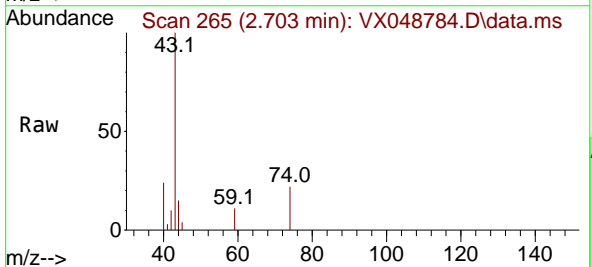
Instrument :
 MSVOA_X
 ClientSampleId :
 CHASE-H

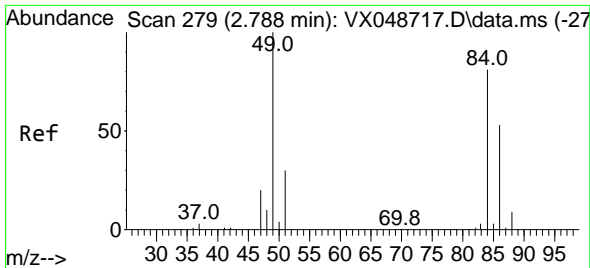
Tgt Ion: 76 Resp: 1750
 Ion Ratio Lower Upper
 76 100
 78 13.1 7.4 11.2#



#18
 Methyl Acetate
 Concen: 1.672 ug/l
 RT: 2.703 min Scan# 265
 Delta R.T. 0.006 min
 Lab File: VX048784.D
 Acq: 09 Dec 2025 15:08

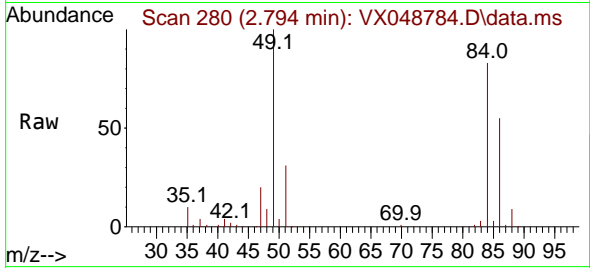
Tgt Ion: 43 Resp: 3924
 Ion Ratio Lower Upper
 43 100
 74 25.5 19.2 28.8





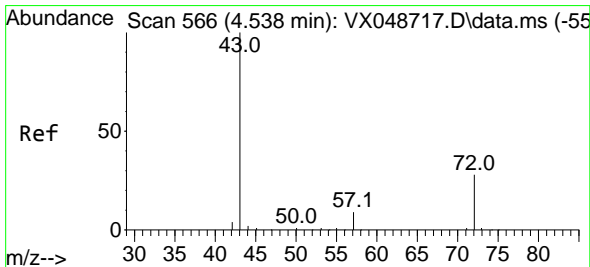
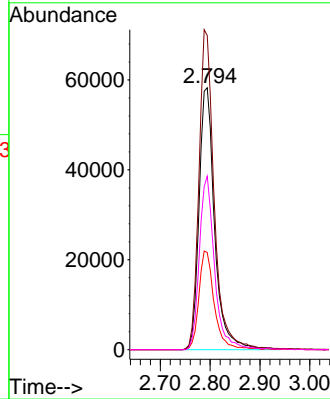
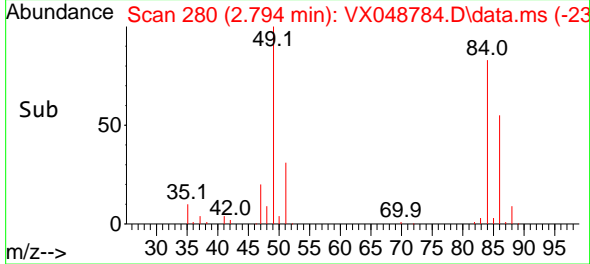
#20
 Methylene Chloride
 Concen: 60.919 ug/l
 RT: 2.794 min Scan# 21
 Delta R.T. 0.006 min
 Lab File: VX048784.D
 Acq: 09 Dec 2025 15:08

Instrument :
 MSVOA_X
 ClientSampleId :
 CHASE-H

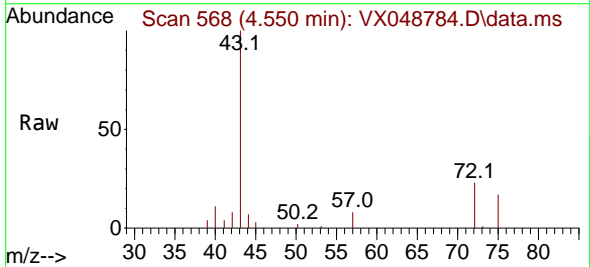


Tgt Ion: 84 Resp: 127017

Ion	Ratio	Lower	Upper
84	100		
49	119.9	98.7	148.1
51	37.1	29.4	44.2
86	66.2	52.5	78.7

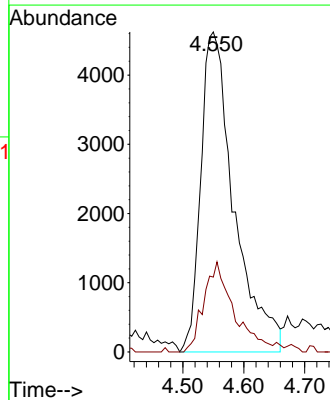
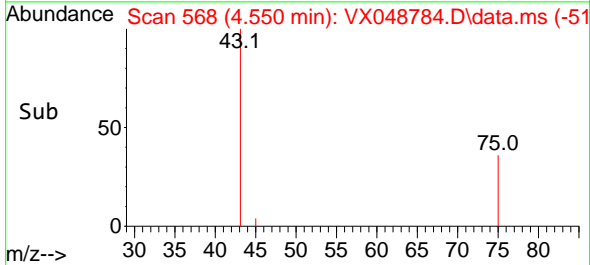


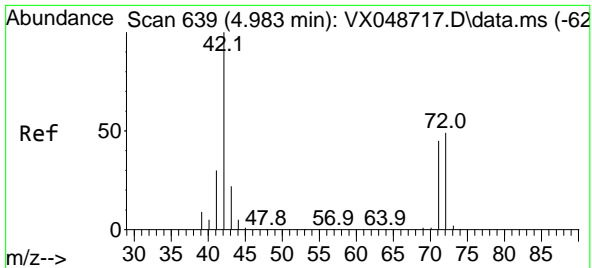
#25
 2-Butanone
 Concen: 14.262 ug/l
 RT: 4.550 min Scan# 568
 Delta R.T. 0.012 min
 Lab File: VX048784.D
 Acq: 09 Dec 2025 15:08



Tgt Ion: 43 Resp: 17559

Ion	Ratio	Lower	Upper
43	100		
72	23.4	22.6	34.0



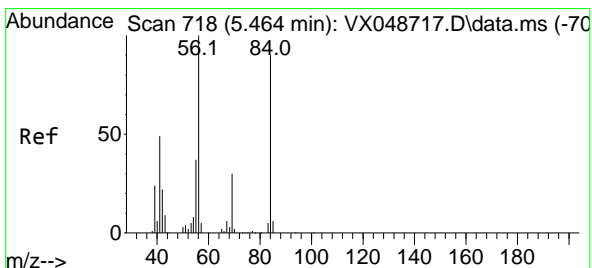
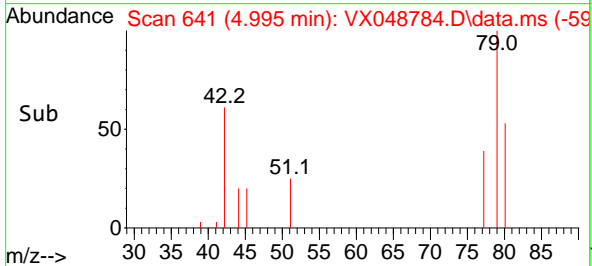
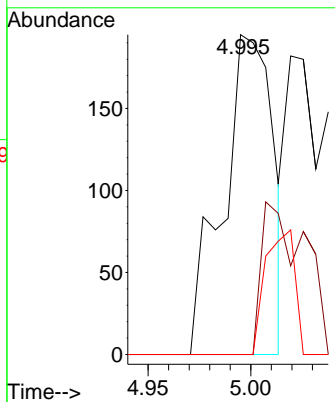
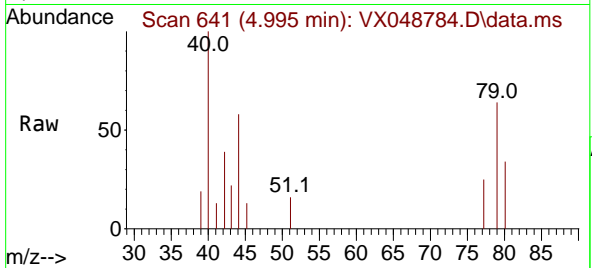


#29
 Tetrahydrofuran
 Concen: 0.353 ug/l
 RT: 4.995 min Scan# 641
 Delta R.T. 0.012 min
 Lab File: VX048784.D
 Acq: 09 Dec 2025 15:08

Instrument :
 MSVOA_X
 ClientSampleId :
 CHASE-H

Tgt Ion: 42 Resp: 332

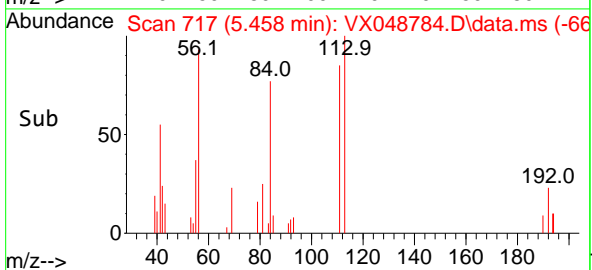
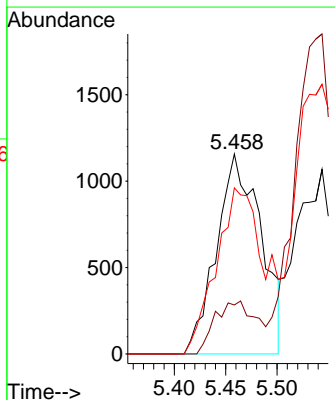
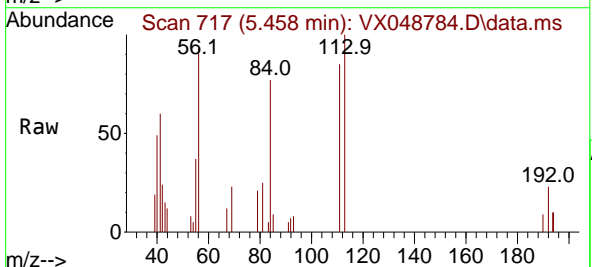
Ion	Ratio	Lower	Upper
42	100		
72	0.0	39.4	59.2#
71	0.0	35.8	53.6#

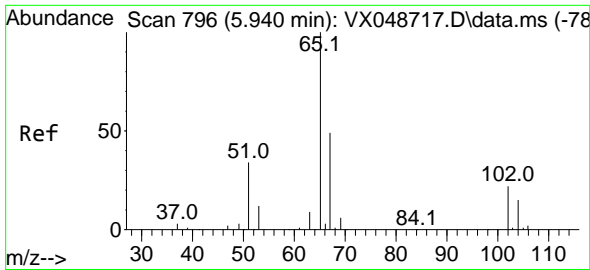


#31
 Cyclohexane
 Concen: 1.182 ug/l
 RT: 5.458 min Scan# 717
 Delta R.T. -0.006 min
 Lab File: VX048784.D
 Acq: 09 Dec 2025 15:08

Tgt Ion: 56 Resp: 3482

Ion	Ratio	Lower	Upper
56	100		
69	24.5	24.2	36.2
84	83.1	72.1	108.1

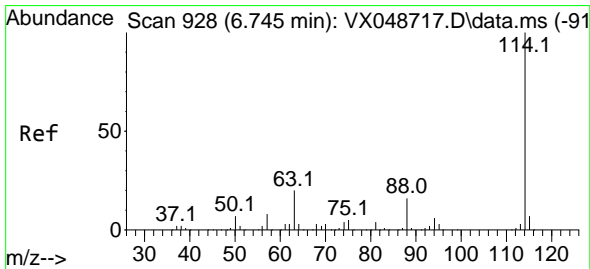
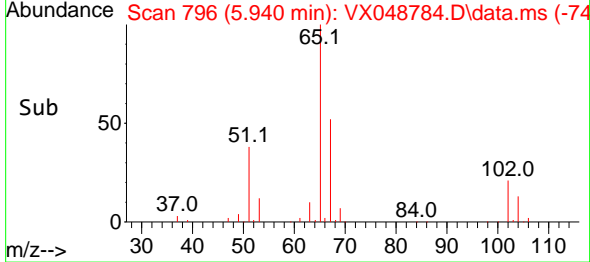
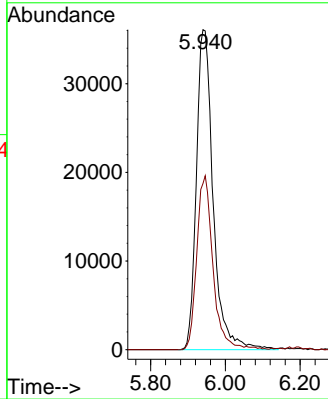
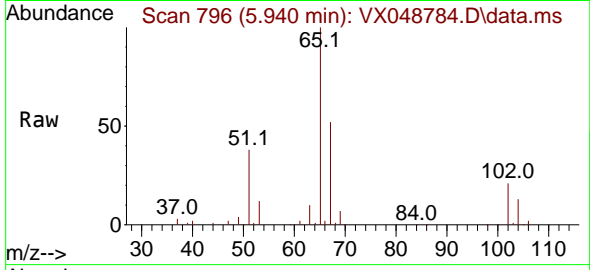




#33
 1,2-Dichloroethane-d4
 Concen: 51.479 ug/l
 RT: 5.940 min Scan# 796
 Delta R.T. -0.000 min
 Lab File: VX048784.D
 Acq: 09 Dec 2025 15:08

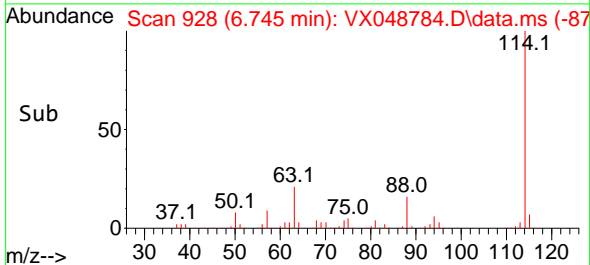
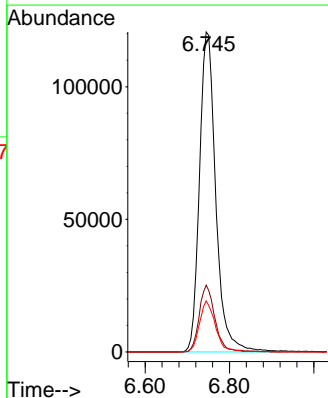
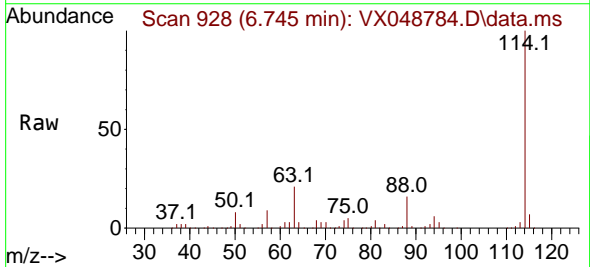
Instrument : MSVOA_X
 ClientSampleId : CHASE-H

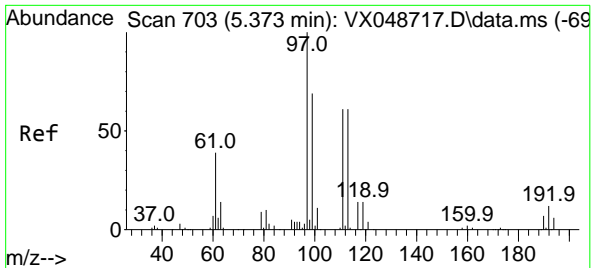
Tgt Ion: 65 Resp: 112173
 Ion Ratio Lower Upper
 65 100
 67 52.8 0.0 107.4



#34
 1,4-Difluorobenzene
 Concen: 50.000 ug/l
 RT: 6.745 min Scan# 928
 Delta R.T. -0.000 min
 Lab File: VX048784.D
 Acq: 09 Dec 2025 15:08

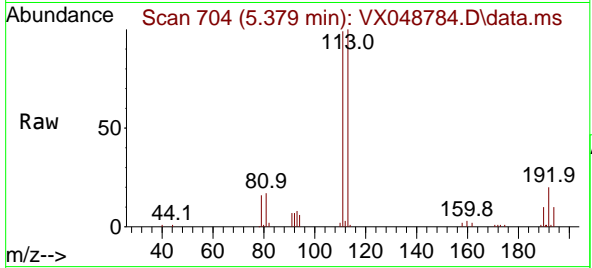
Tgt Ion: 114 Resp: 324548
 Ion Ratio Lower Upper
 114 100
 63 20.9 0.0 39.0
 88 16.0 0.0 31.8



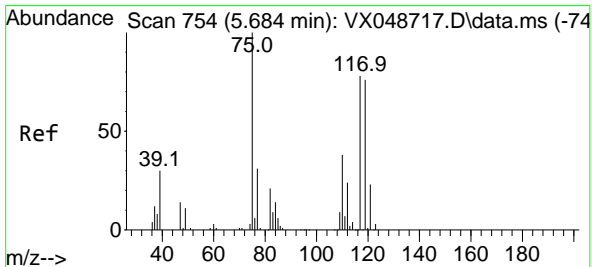
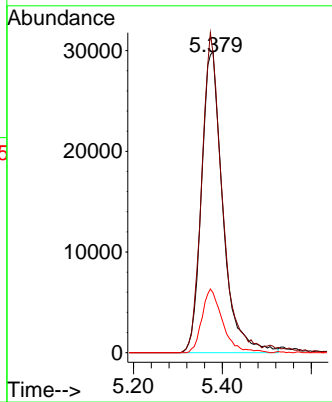
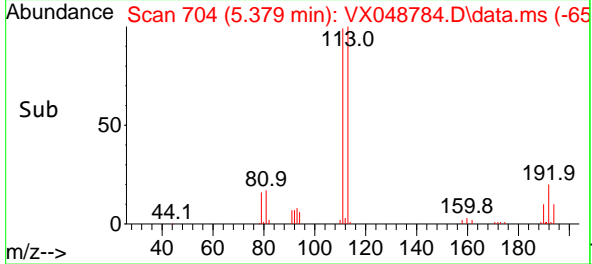


#35
 Dibromofluoromethane
 Concen: 44.715 ug/l
 RT: 5.379 min Scan# 703
 Delta R.T. 0.006 min
 Lab File: VX048784.D
 Acq: 09 Dec 2025 15:08

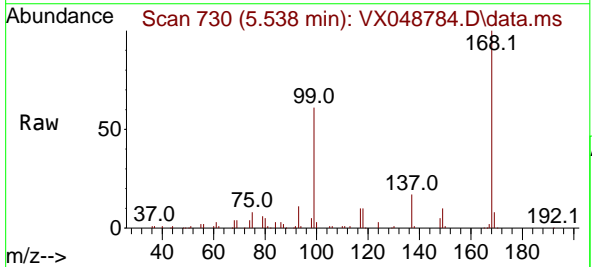
Instrument :
 MSVOA_X
 ClientSampleId :
 CHASE-H



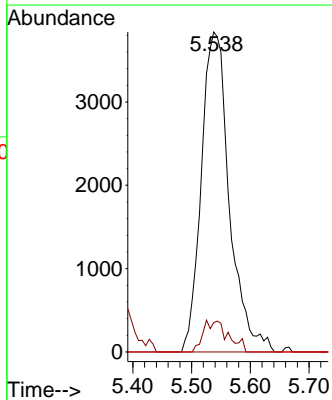
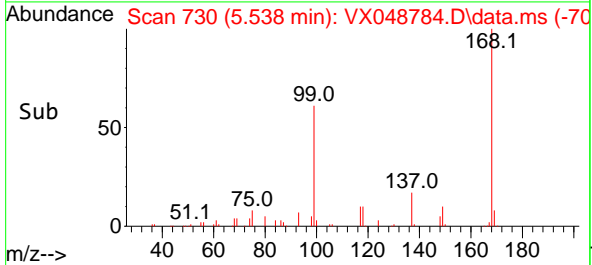
Tgt Ion:113 Resp: 99922
 Ion Ratio Lower Upper
 113 100
 111 101.3 79.5 119.3
 192 20.4 16.1 24.1

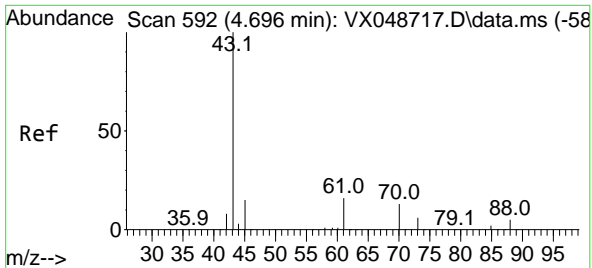


#36
 1,1-Dichloropropene
 Concen: 4.166 ug/l
 RT: 5.538 min Scan# 730
 Delta R.T. -0.146 min
 Lab File: VX048784.D
 Acq: 09 Dec 2025 15:08



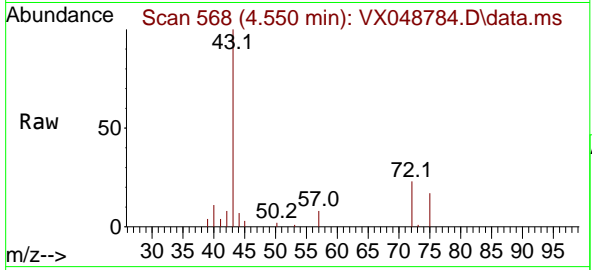
Tgt Ion: 75 Resp: 12752
 Ion Ratio Lower Upper
 75 100
 110 8.7 18.6 55.8#
 77 0.0 25.3 37.9#





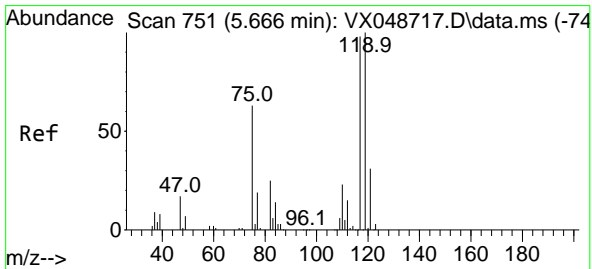
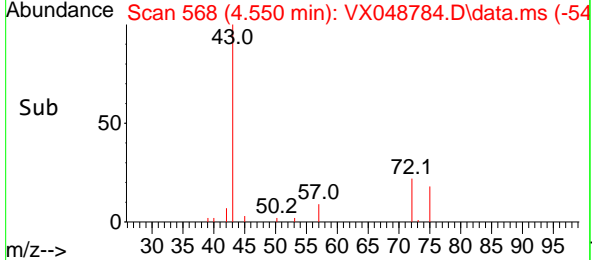
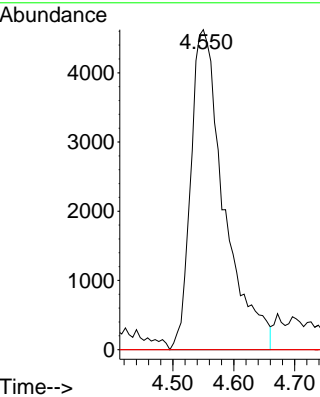
#37
 Ethyl Acetate
 Concen: 4.801 ug/l
 RT: 4.550 min Scan# 510
 Delta R.T. -0.146 min
 Lab File: VX048784.D
 Acq: 09 Dec 2025 15:08

Instrument : MSVOA_X
 Client SampleId : CHASE-H



Tgt Ion: 43 Resp: 17559

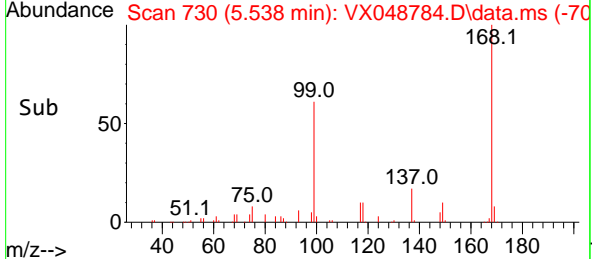
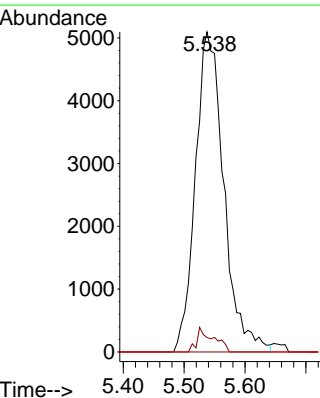
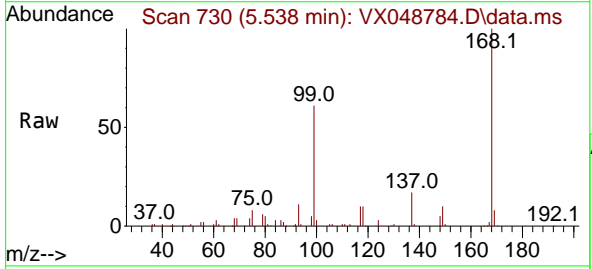
Ion	Ratio	Lower	Upper
43	100		
61	0.0	9.7	14.5#
70	0.0	8.2	12.4#

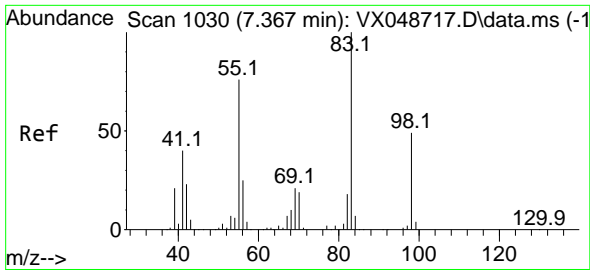


#38
 Carbon Tetrachloride
 Concen: 4.757 ug/l
 RT: 5.538 min Scan# 730
 Delta R.T. -0.128 min
 Lab File: VX048784.D
 Acq: 09 Dec 2025 15:08

Tgt Ion: 117 Resp: 16491

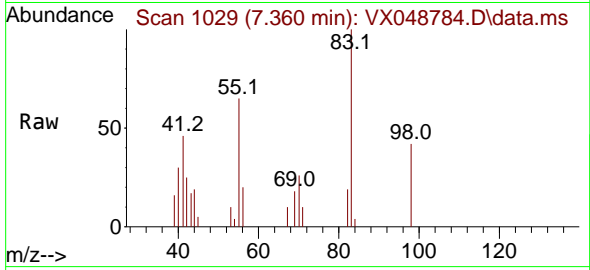
Ion	Ratio	Lower	Upper
117	100		
119	4.5	80.5	120.7#
121	0.0	25.4	38.0#



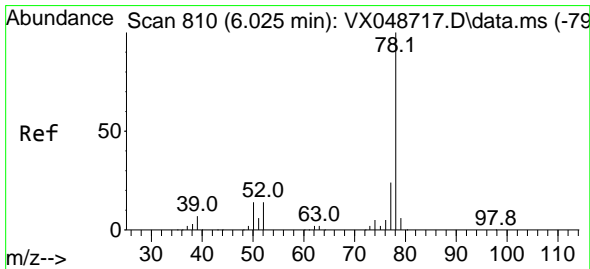
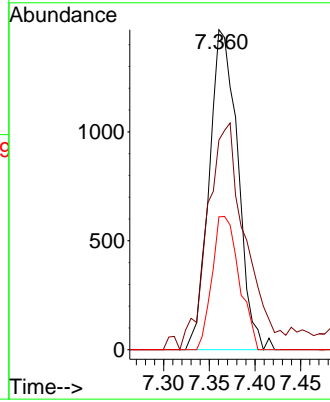
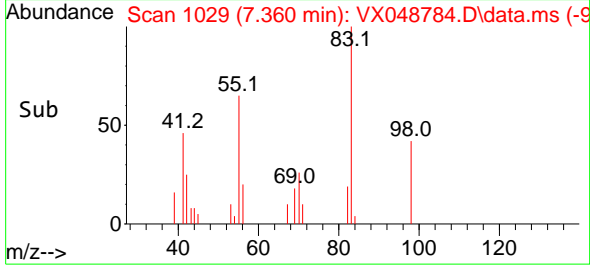


#39
 Methylcyclohexane
 Concen: 0.886 ug/l
 RT: 7.360 min Scan# 1030
 Delta R.T. -0.006 min
 Lab File: VX048784.D
 Acq: 09 Dec 2025 15:08

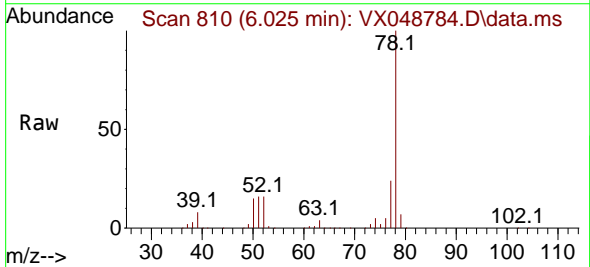
Instrument : MSVOA_X
 ClientSampleId : CHASE-H



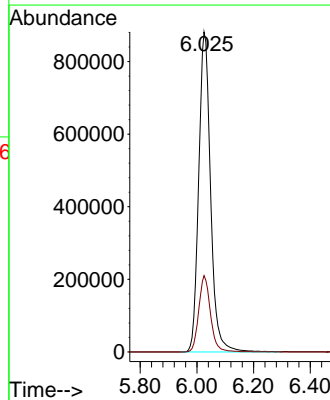
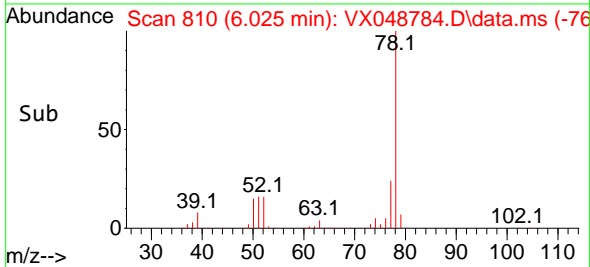
Tgt Ion: 83 Resp: 3205
 Ion Ratio Lower Upper
 83 100
 55 65.5 60.6 90.8
 98 41.5 39.3 58.9

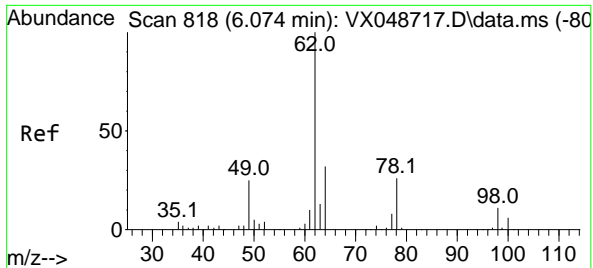


#40
 Benzene
 Concen: 281.945 ug/l
 RT: 6.025 min Scan# 810
 Delta R.T. -0.000 min
 Lab File: VX048784.D
 Acq: 09 Dec 2025 15:08



Tgt Ion: 78 Resp: 2558139
 Ion Ratio Lower Upper
 78 100
 77 23.8 18.8 28.2

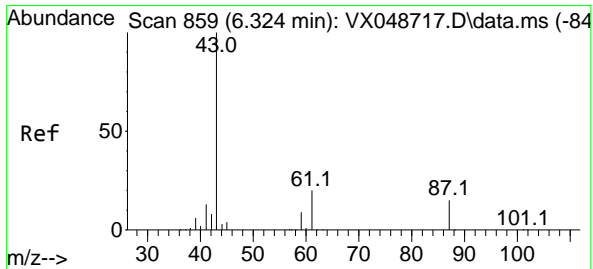
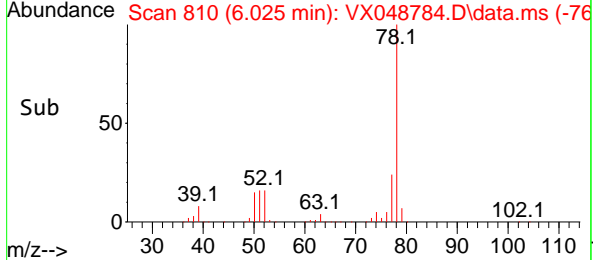
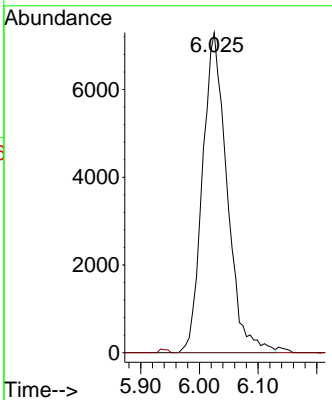
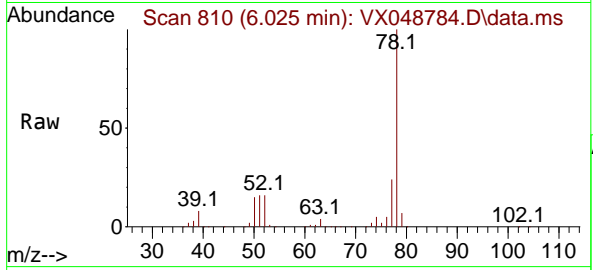




#42
 1,2-Dichloroethane
 Concen: 6.595 ug/l
 RT: 6.025 min Scan# 810
 Delta R.T. -0.049 min
 Lab File: VX048784.D
 Acq: 09 Dec 2025 15:08

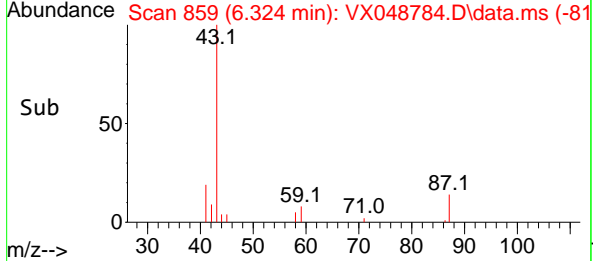
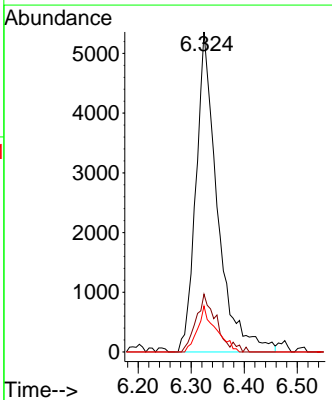
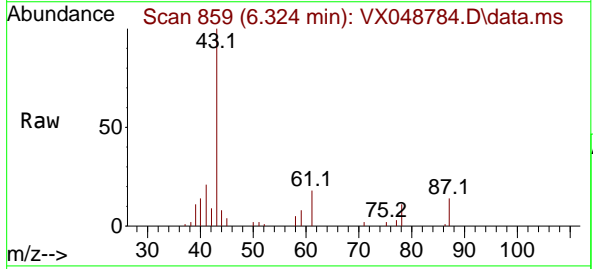
Instrument : MSVOA_X
 ClientSampleId : CHASE-H

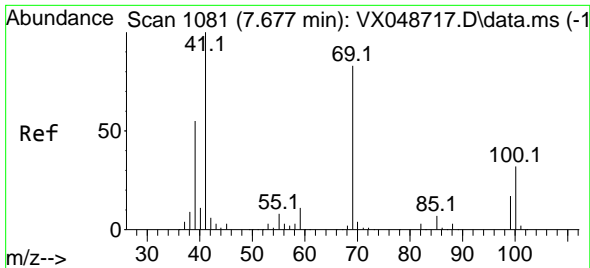
Tgt Ion	Resp	Lower	Upper
62	100		
98	0.0	0.0	20.2



#43
 Isopropyl Acetate
 Concen: 2.718 ug/l
 RT: 6.324 min Scan# 859
 Delta R.T. 0.000 min
 Lab File: VX048784.D
 Acq: 09 Dec 2025 15:08

Tgt Ion	Resp	Lower	Upper
43	100		
61	16.3	16.8	25.2#
87	12.1	11.8	17.6

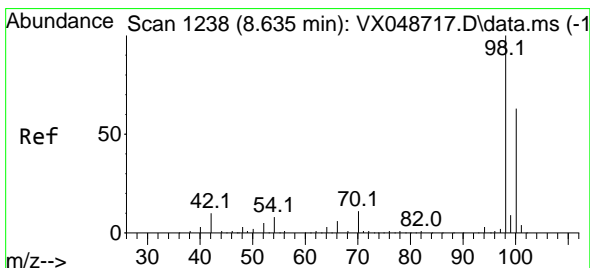
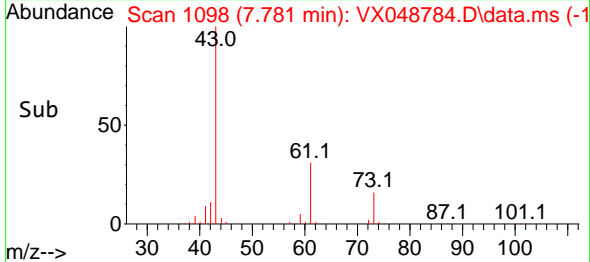
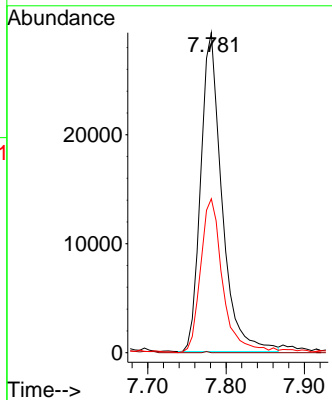
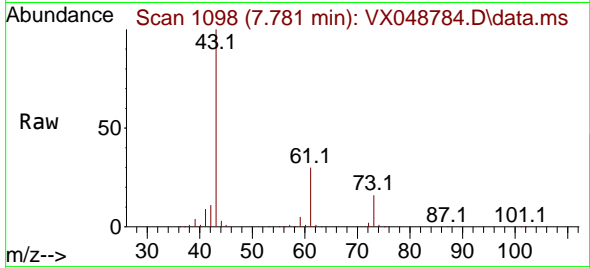




#48
 Methyl methacrylate
 Concen: 19.758 ug/l
 RT: 7.781 min Scan# 1098
 Delta R.T. 0.104 min
 Lab File: VX048784.D
 Acq: 09 Dec 2025 15:08

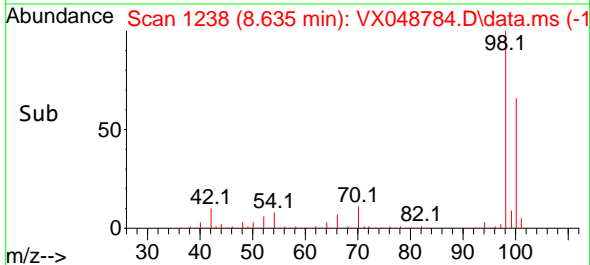
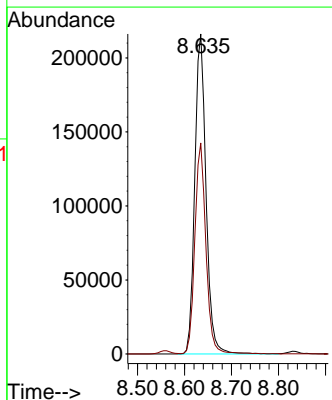
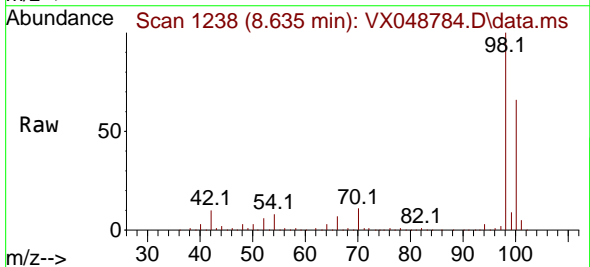
Instrument :
 MSVOA_X
 ClientSampleId :
 CHASE-H

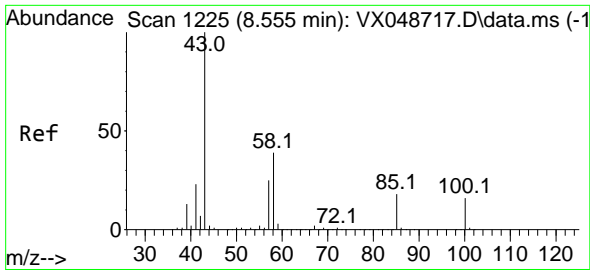
Tgt Ion: 41 Resp: 55040
 Ion Ratio Lower Upper
 41 100
 69 0.1 68.5 102.7#
 39 51.5 43.5 65.3



#50
 Toluene-d8
 Concen: 46.057 ug/l
 RT: 8.635 min Scan# 1238
 Delta R.T. -0.000 min
 Lab File: VX048784.D
 Acq: 09 Dec 2025 15:08

Tgt Ion: 98 Resp: 360768
 Ion Ratio Lower Upper
 98 100
 100 64.9 53.4 80.0

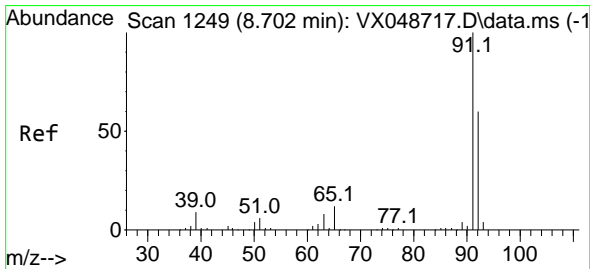
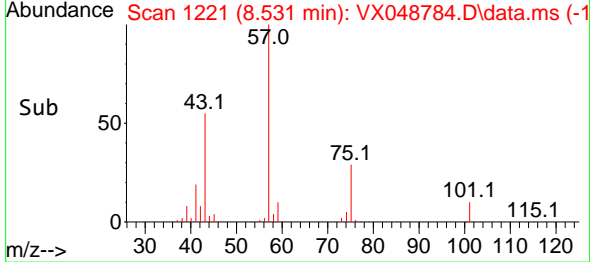
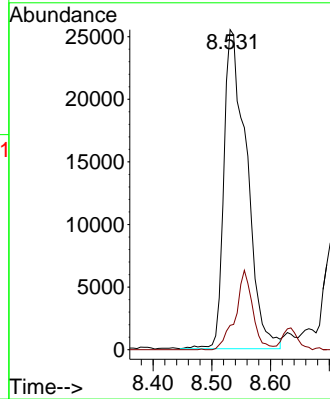
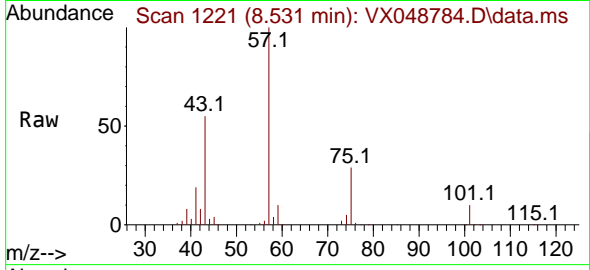




#51
 4-Methyl-2-Pentanone
 Concen: 19.972 ug/l
 RT: 8.531 min Scan# 11
 Delta R.T. -0.024 min
 Lab File: VX048784.D
 Acq: 09 Dec 2025 15:08

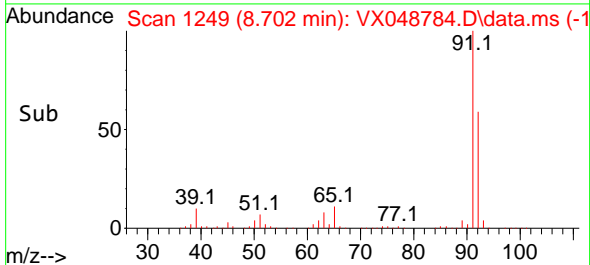
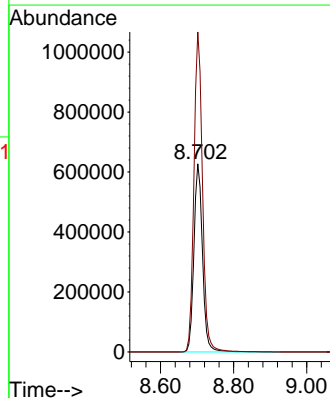
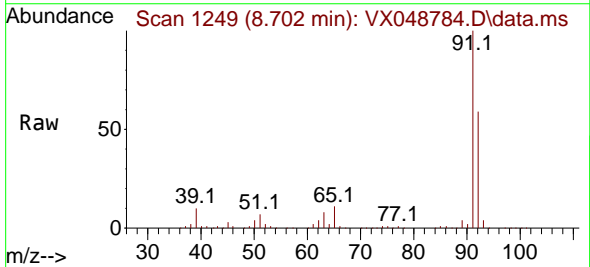
Instrument :
 MSVOA_X
 ClientSampleId :
 CHASE-H

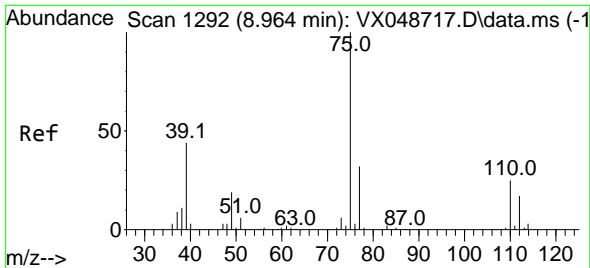
Tgt Ion: 43 Resp: 68649
 Ion Ratio Lower Upper
 43 100
 58 0.0 32.2 48.4#



#52
 Toluene
 Concen: 186.625 ug/l
 RT: 8.702 min Scan# 1249
 Delta R.T. -0.000 min
 Lab File: VX048784.D
 Acq: 09 Dec 2025 15:08

Tgt Ion: 92 Resp: 1021072
 Ion Ratio Lower Upper
 92 100
 91 170.2 136.3 204.5

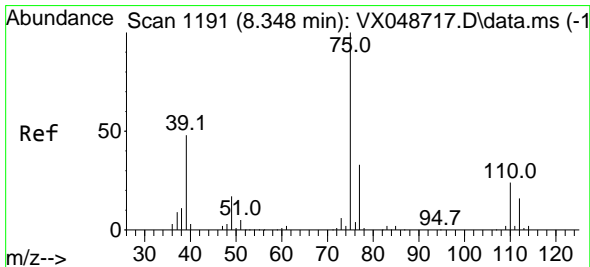
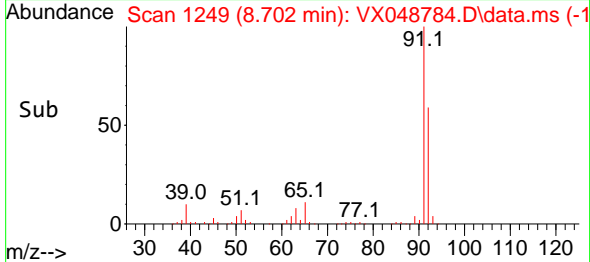
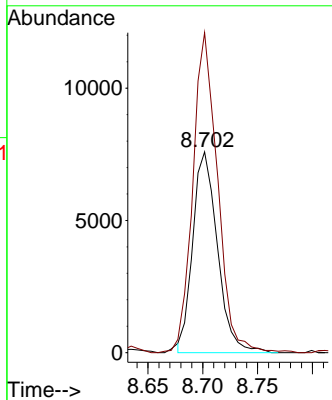
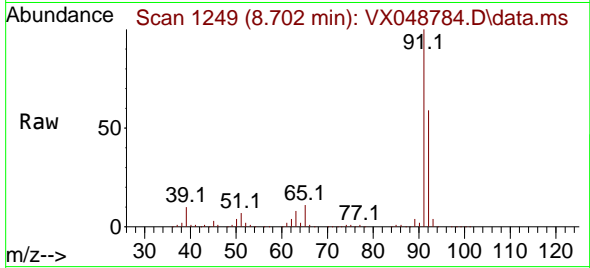




#53
 t-1,3-Dichloropropene
 Concen: 3.480 ug/l
 RT: 8.702 min Scan# 11871
 Delta R.T. -0.262 min
 Lab File: VX048784.D
 Acq: 09 Dec 2025 15:08

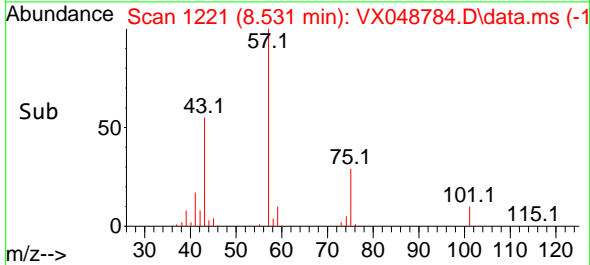
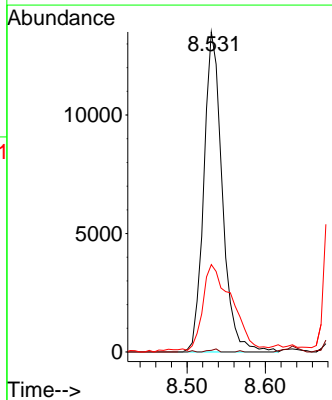
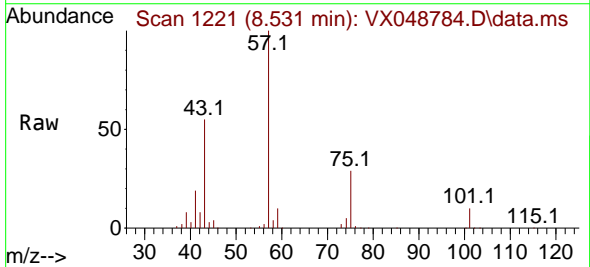
Instrument : MSVOA_X
 ClientSampleId : CHASE-H

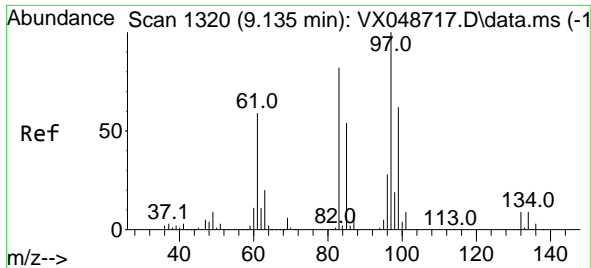
Tgt Ion: 75 Resp: 11871
 Ion Ratio Lower Upper
 75 100
 77 158.6 25.3 37.9#



#54
 cis-1,3-Dichloropropene
 Concen: 6.026 ug/l
 RT: 8.531 min Scan# 1221
 Delta R.T. 0.183 min
 Lab File: VX048784.D
 Acq: 09 Dec 2025 15:08

Tgt Ion: 75 Resp: 22090
 Ion Ratio Lower Upper
 75 100
 77 0.5 26.1 39.1#
 39 26.6 38.2 57.4#

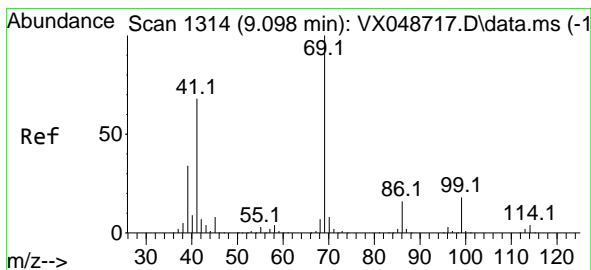
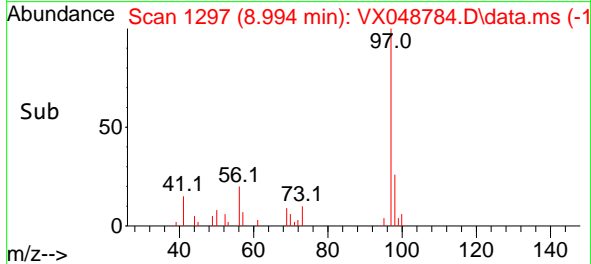
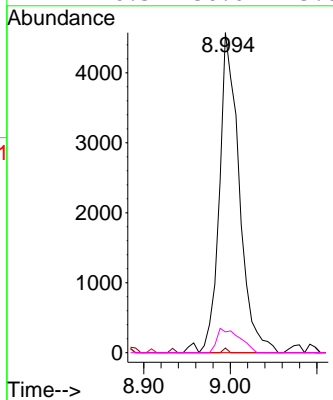
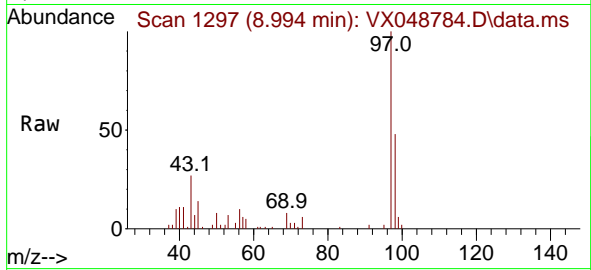




#55
 1,1,2-Trichloroethane
 Concen: 3.330 ug/l
 RT: 8.994 min Scan# 1297
 Delta R.T. -0.140 min
 Lab File: VX048784.D
 Acq: 09 Dec 2025 15:08

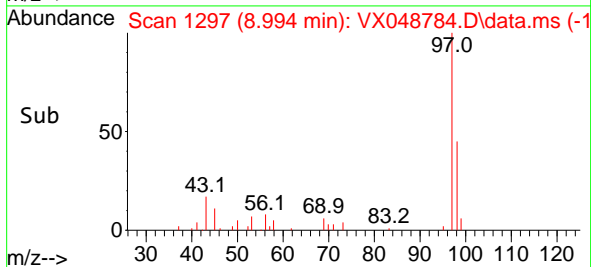
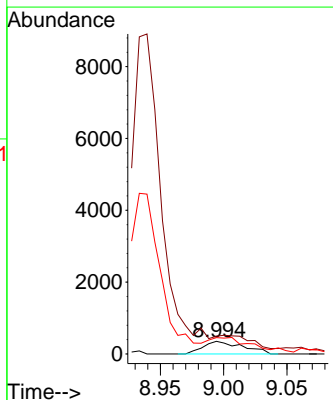
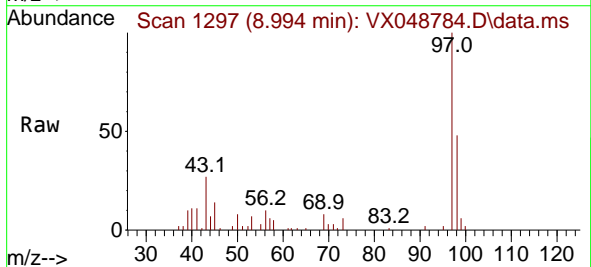
Instrument : MSVOA_X
 ClientSampleId : CHASE-H

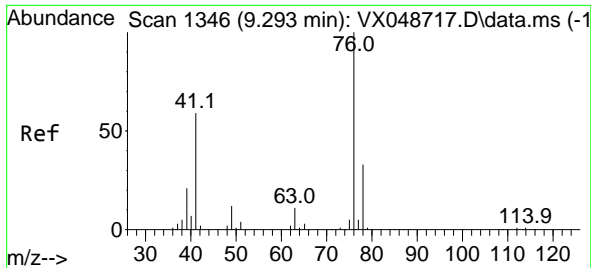
Tgt Ion	Resp	Lower	Upper
97	7330		
83	1.4	66.0	99.0#
85	0.0	43.2	64.8#
99	6.5	50.0	75.0#



#56
 Ethyl methacrylate
 Concen: 0.223 ug/l
 RT: 8.994 min Scan# 1297
 Delta R.T. -0.104 min
 Lab File: VX048784.D
 Acq: 09 Dec 2025 15:08

Tgt Ion	Resp	Lower	Upper
69	768		
41	0.0	53.4	80.2#
39	134.4	27.5	41.3#

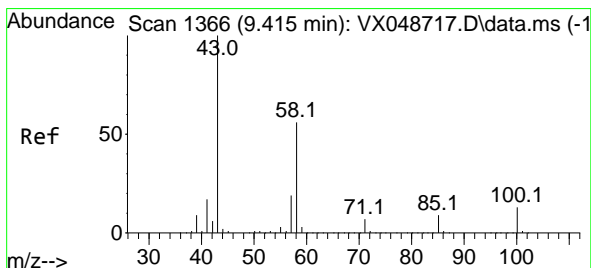
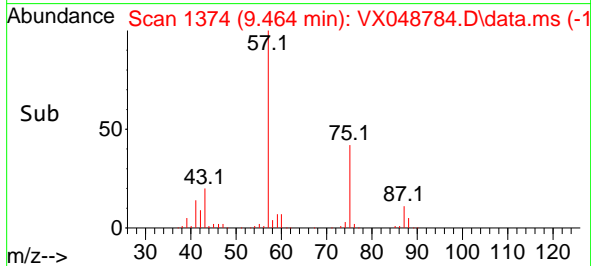
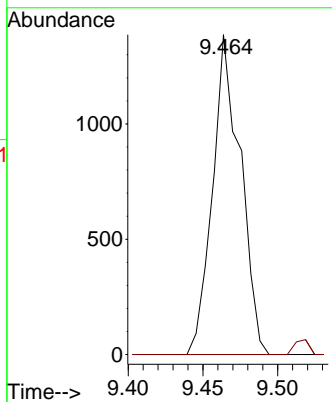
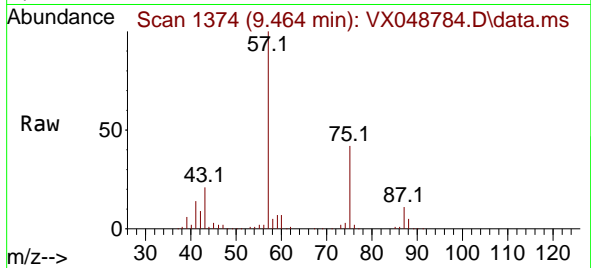




#57
 1,3-Dichloropropane
 Concen: 0.491 ug/l
 RT: 9.464 min Scan# 1374
 Delta R.T. 0.171 min
 Lab File: VX048784.D
 Acq: 09 Dec 2025 15:08

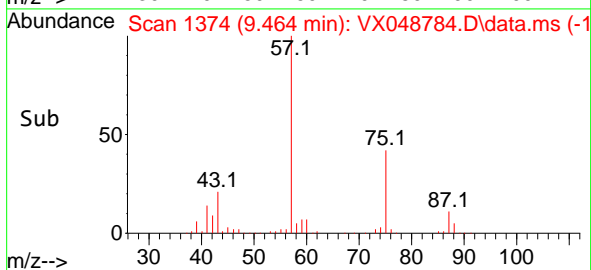
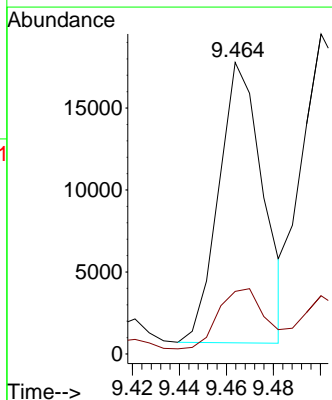
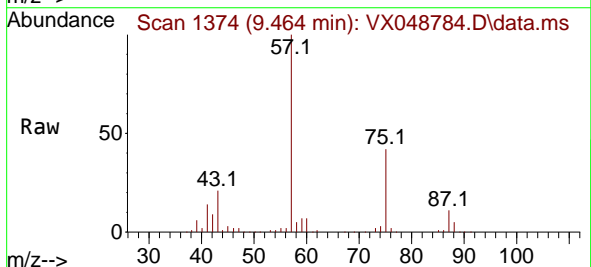
Instrument :
 MSVOA_X
 ClientSampleId :
 CHASE-H

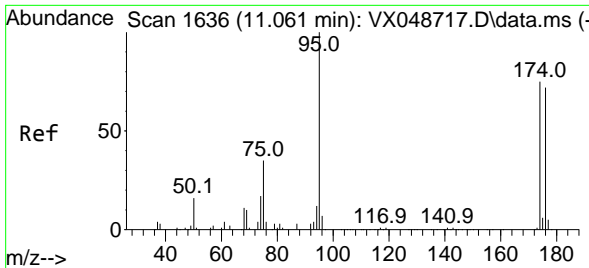
Tgt Ion: 76 Resp: 1797
 Ion Ratio Lower Upper
 76 100
 78 0.0 26.0 39.0#



#59
 2-Hexanone
 Concen: 9.280 ug/l
 RT: 9.464 min Scan# 1374
 Delta R.T. 0.049 min
 Lab File: VX048784.D
 Acq: 09 Dec 2025 15:08

Tgt Ion: 43 Resp: 22391
 Ion Ratio Lower Upper
 43 100
 58 26.0 27.8 83.4#



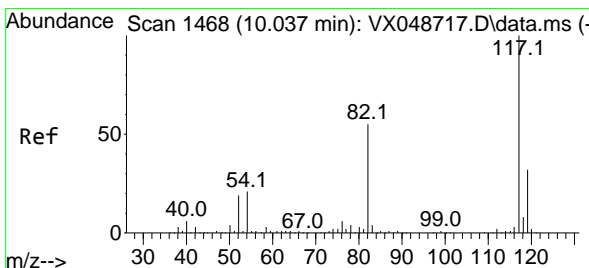
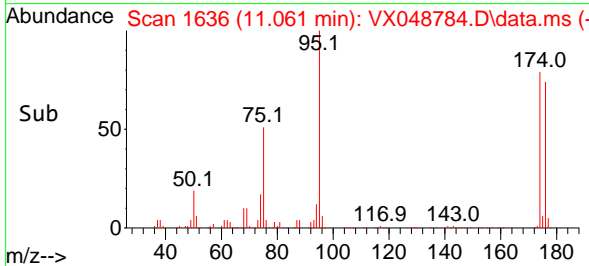
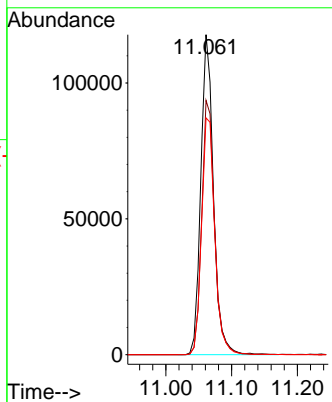
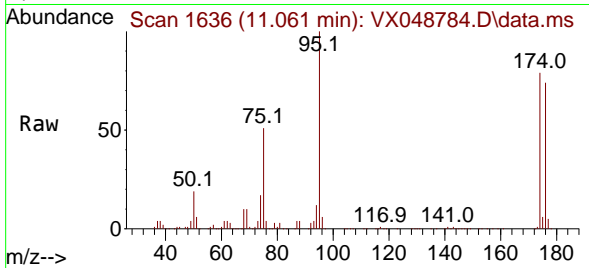


#62
 4-Bromofluorobenzene
 Concen: 58.200 ug/l
 RT: 11.061 min Scan# 11
 Delta R.T. -0.000 min
 Lab File: VX048784.D
 Acq: 09 Dec 2025 15:08

Instrument :
 MSVOA_X
 ClientSampleId :
 CHASE-H

Tgt Ion: 95 Resp: 157205

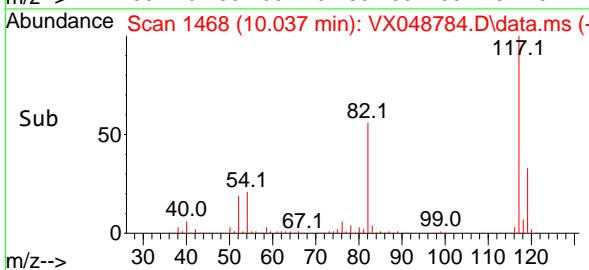
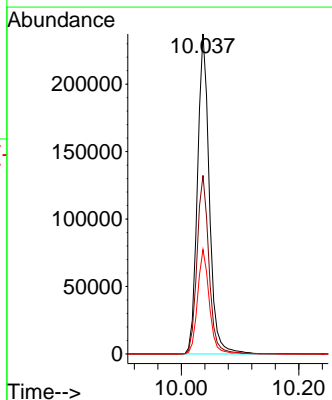
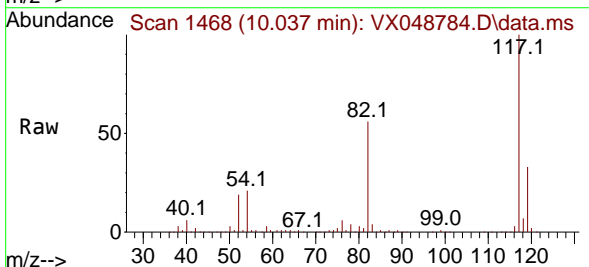
Ion	Ratio	Lower	Upper
95	100		
174	81.0	0.0	157.8
176	77.2	0.0	154.0

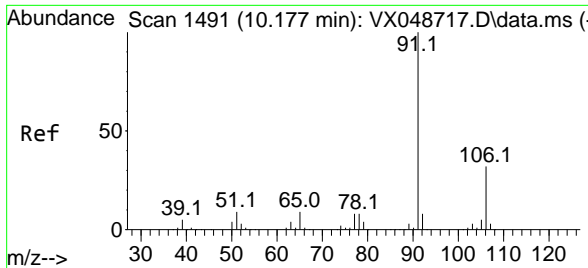


#63
 Chlorobenzene-d5
 Concen: 50.000 ug/l
 RT: 10.037 min Scan# 1468
 Delta R.T. 0.000 min
 Lab File: VX048784.D
 Acq: 09 Dec 2025 15:08

Tgt Ion: 117 Resp: 333200

Ion	Ratio	Lower	Upper
117	100		
82	55.8	44.1	66.1
119	32.7	25.2	37.8

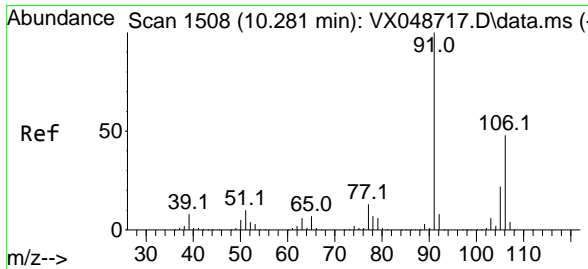
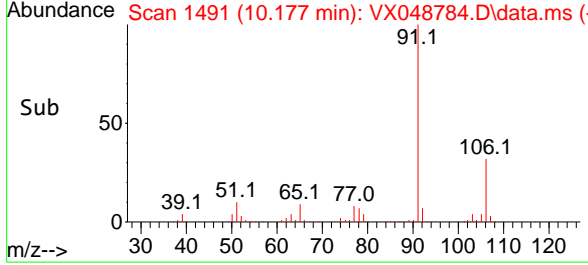
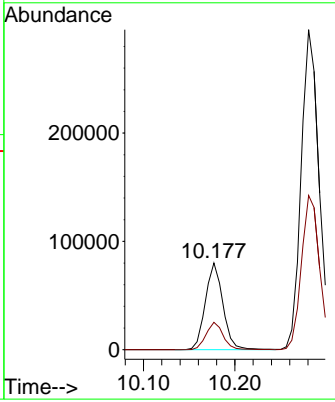
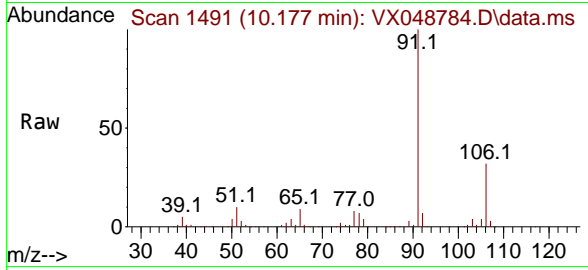




#67
 Ethyl Benzene
 Concen: 8.969 ug/l
 RT: 10.177 min Scan# 1491
 Delta R.T. 0.000 min
 Lab File: VX048784.D
 Acq: 09 Dec 2025 15:08

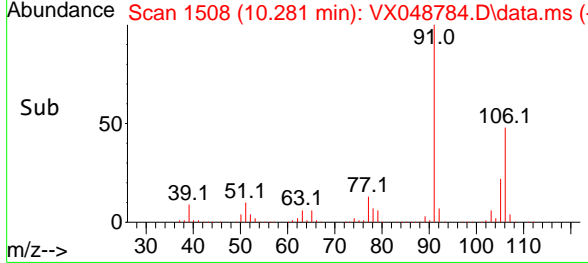
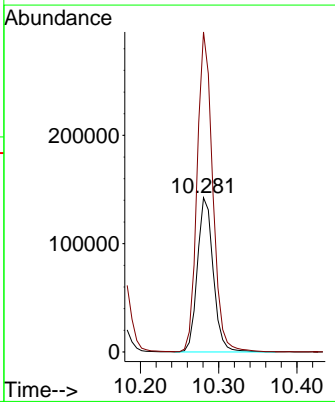
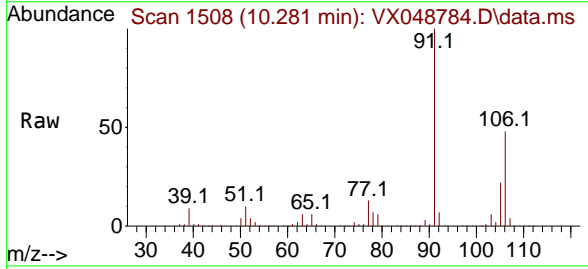
Instrument : MSVOA_X
 ClientSampleId : CHASE-H

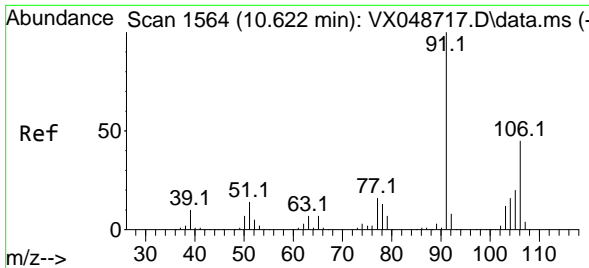
Tgt Ion: 91 Resp: 106738
 Ion Ratio Lower Upper
 91 100
 106 31.5 25.3 37.9



#68
 m/p-Xylenes
 Concen: 43.212 ug/l
 RT: 10.281 min Scan# 1508
 Delta R.T. -0.000 min
 Lab File: VX048784.D
 Acq: 09 Dec 2025 15:08

Tgt Ion:106 Resp: 200328
 Ion Ratio Lower Upper
 106 100
 91 203.5 164.2 246.4

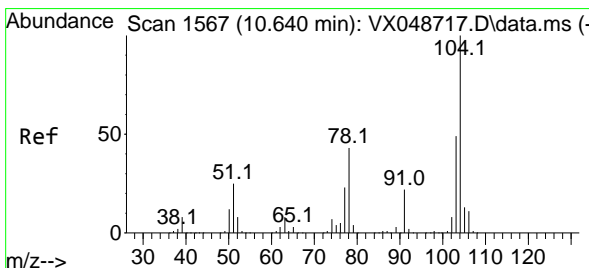
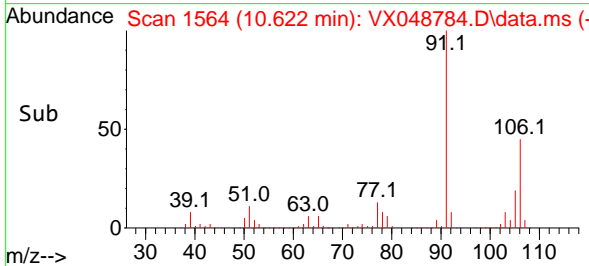
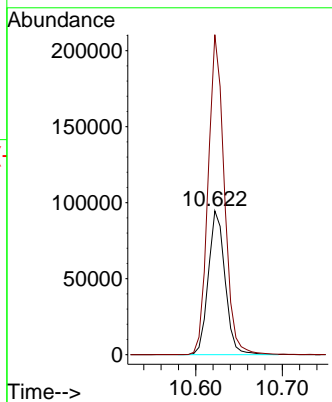
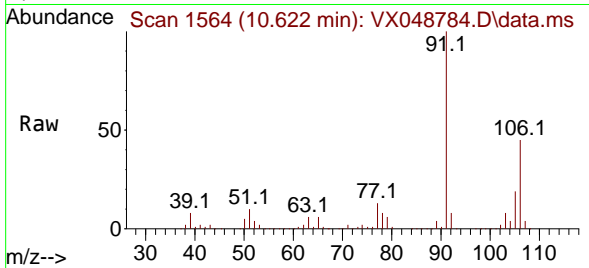




#69
 o-Xylene
 Concen: 29.200 ug/l
 RT: 10.622 min Scan# 1564
 Delta R.T. -0.000 min
 Lab File: VX048784.D
 Acq: 09 Dec 2025 15:08

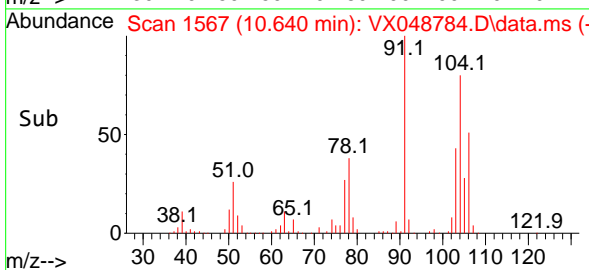
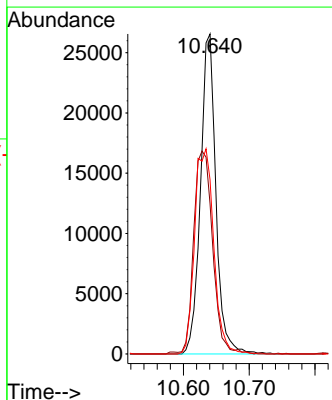
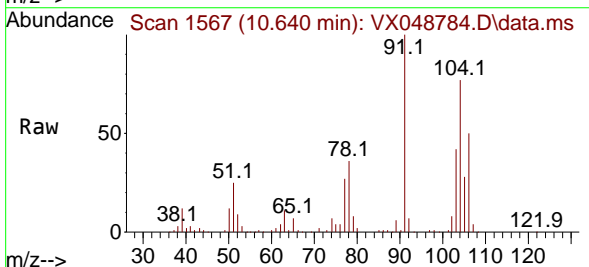
Instrument : MSVOA_X
 ClientSampleId : CHASE-H

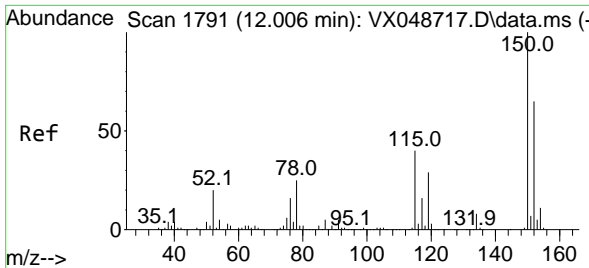
Tgt Ion:106 Resp: 126850
 Ion Ratio Lower Upper
 106 100
 91 215.6 108.1 324.3



#70
 Styrene
 Concen: 5.807 ug/l
 RT: 10.640 min Scan# 1567
 Delta R.T. 0.000 min
 Lab File: VX048784.D
 Acq: 09 Dec 2025 15:08

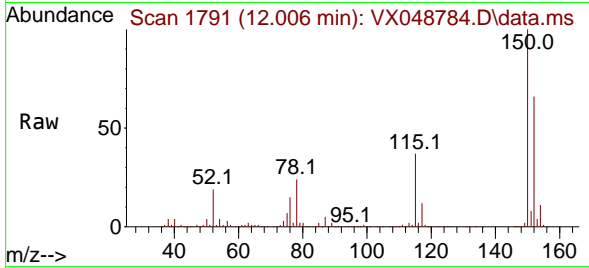
Tgt Ion:104 Resp: 43305
 Ion Ratio Lower Upper
 104 100
 78 77.6 40.6 60.8#
 103 79.2 43.4 65.2#



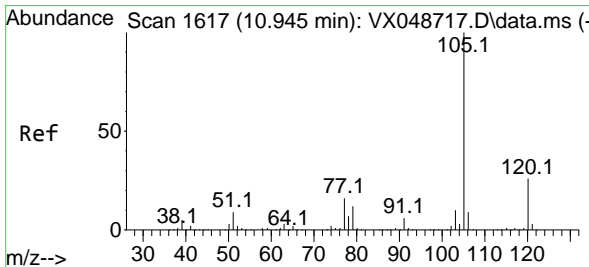
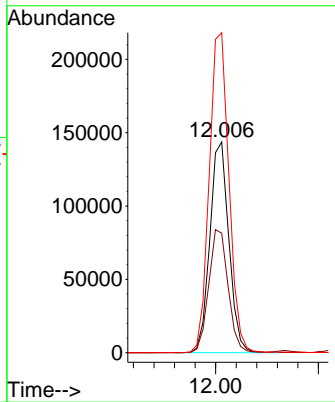
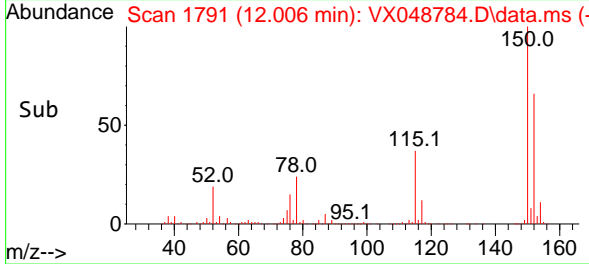


#72
 1,4-Dichlorobenzene-d4
 Concen: 50.000 ug/l
 RT: 12.006 min Scan# 1791
 Delta R.T. -0.000 min
 Lab File: VX048784.D
 Acq: 09 Dec 2025 15:08

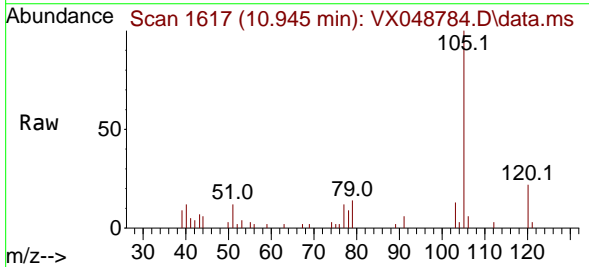
Instrument : MSVOA_X
 ClientSampleId : CHASE-H



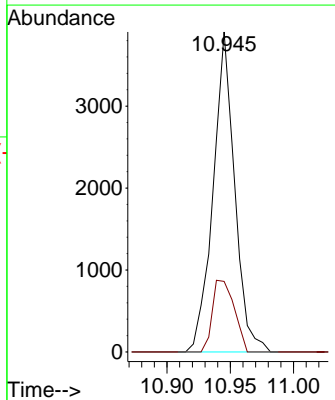
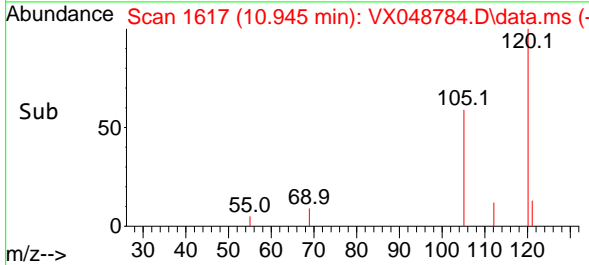
Tgt Ion:152 Resp: 184210
 Ion Ratio Lower Upper
 152 100
 115 59.4 42.1 126.4
 150 157.6 0.0 347.8

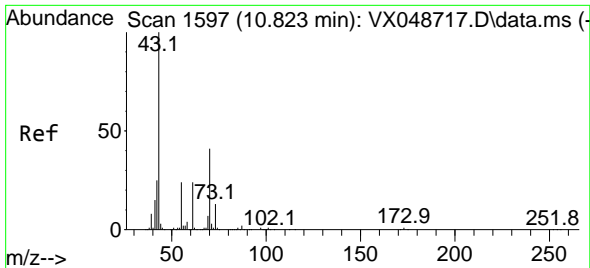


#73
 Isopropylbenzene
 Concen: 0.373 ug/l
 RT: 10.945 min Scan# 1617
 Delta R.T. -0.000 min
 Lab File: VX048784.D
 Acq: 09 Dec 2025 15:08



Tgt Ion:105 Resp: 4629
 Ion Ratio Lower Upper
 105 100
 120 22.7 13.2 39.5



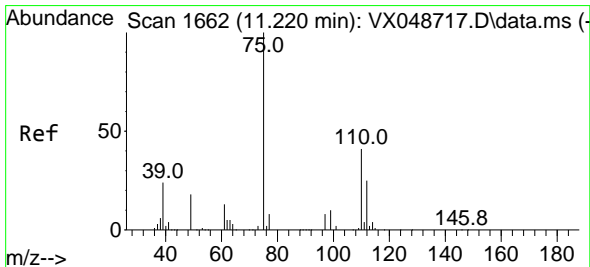
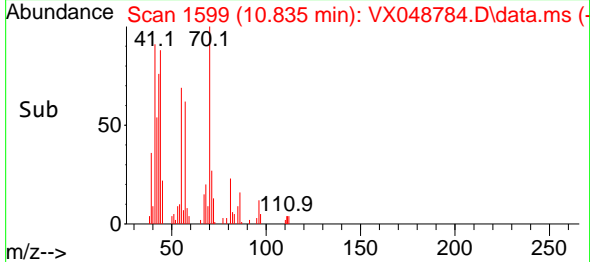
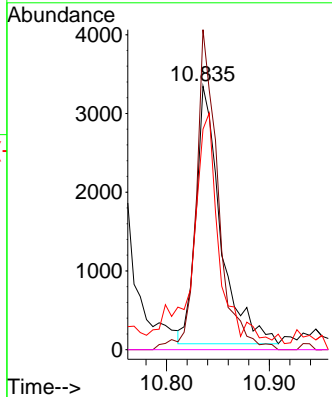
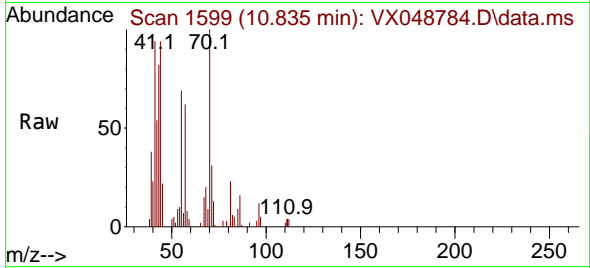


#74
 N-amy1 acetate
 Concen: 1.011 ug/l
 RT: 10.835 min Scan# 11
 Delta R.T. 0.012 min
 Lab File: VX048784.D
 Acq: 09 Dec 2025 15:08

Instrument :
 MSVOA_X
 ClientSampleId :
 CHASE-H

Tgt Ion: 43 Resp: 5453

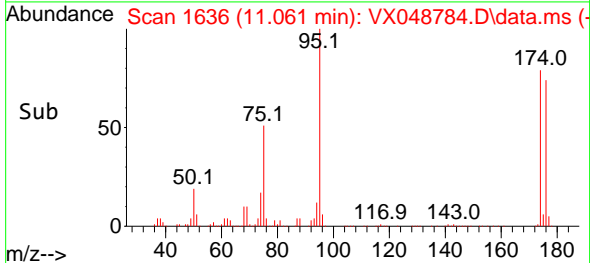
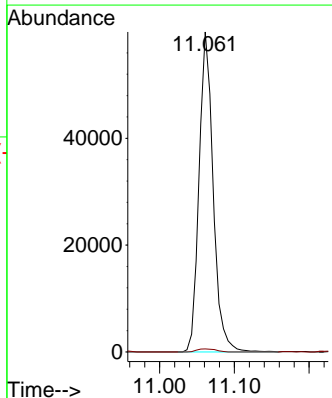
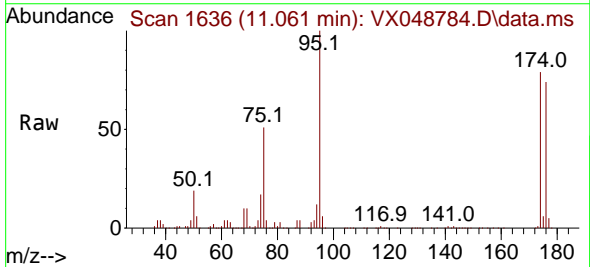
Ion	Ratio	Lower	Upper
43	100		
70	110.3	33.9	50.9#
55	101.8	19.1	28.7#
61	0.0	19.0	28.6#

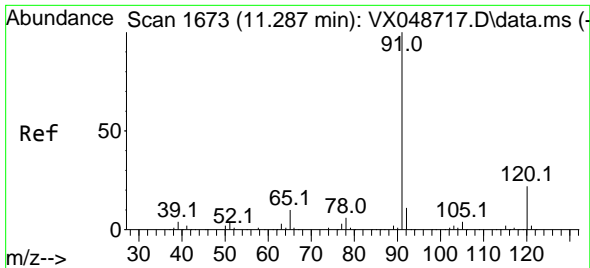


#76
 1,2,3-Trichloropropane
 Concen: 22.894 ug/l
 RT: 11.061 min Scan# 1636
 Delta R.T. -0.159 min
 Lab File: VX048784.D
 Acq: 09 Dec 2025 15:08

Tgt Ion: 75 Resp: 78547

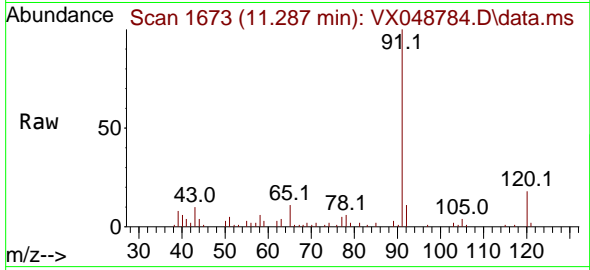
Ion	Ratio	Lower	Upper
75	100		
77	1.3	24.3	73.0#



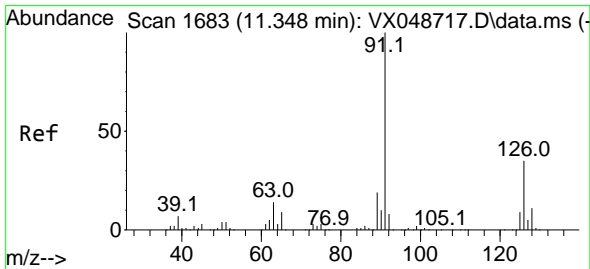
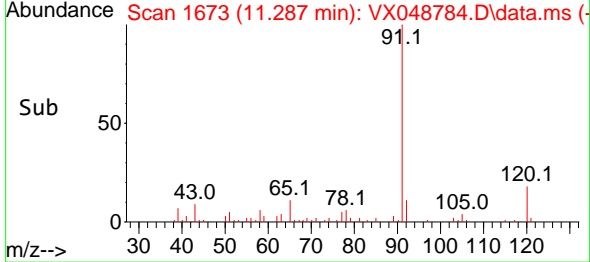
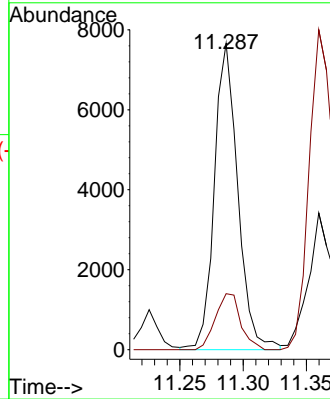


#78
 n-propylbenzene
 Concen: 0.687 ug/l
 RT: 11.287 min Scan# 1673
 Delta R.T. -0.000 min
 Lab File: VX048784.D
 Acq: 09 Dec 2025 15:08

Instrument : MSVOA_X
 ClientSampleId : CHASE-H

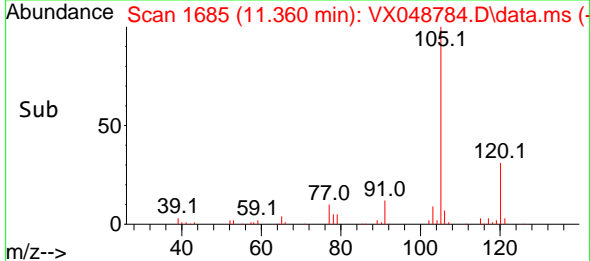
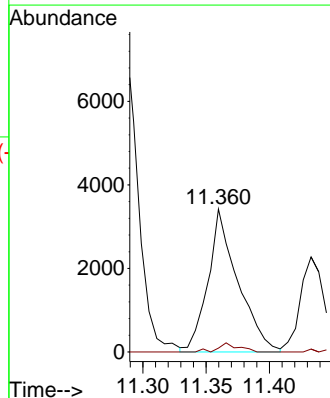
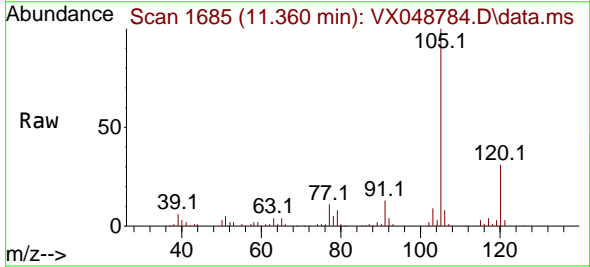


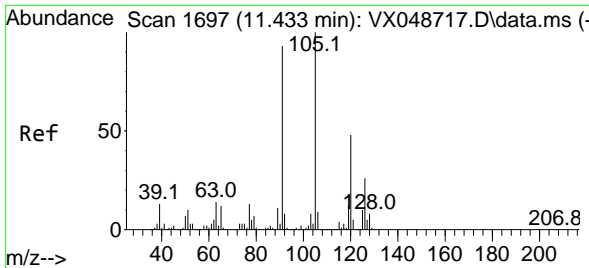
Tgt Ion: 91 Resp: 9884
 Ion Ratio Lower Upper
 91 100
 120 19.7 11.4 34.2



#79
 2-Chlorotoluene
 Concen: 0.641 ug/l
 RT: 11.360 min Scan# 1685
 Delta R.T. 0.012 min
 Lab File: VX048784.D
 Acq: 09 Dec 2025 15:08

Tgt Ion: 91 Resp: 5617
 Ion Ratio Lower Upper
 91 100
 126 4.4 16.8 50.3#

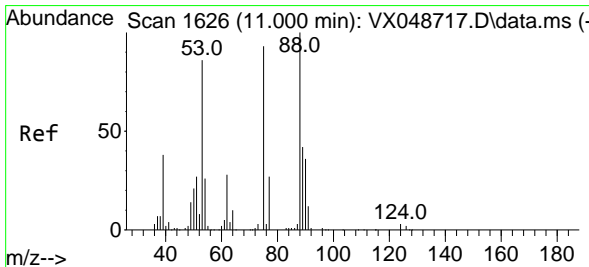
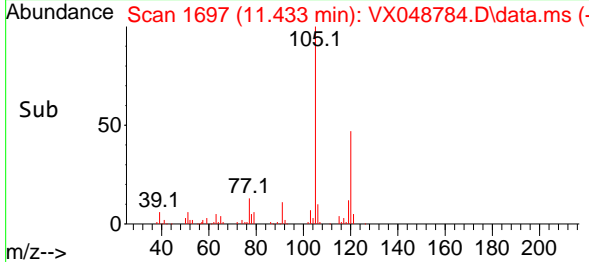
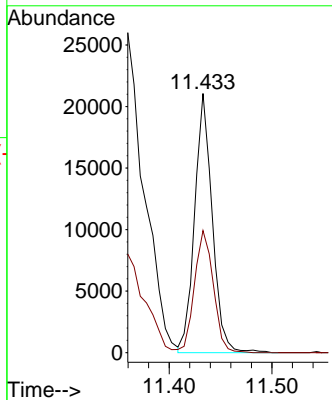
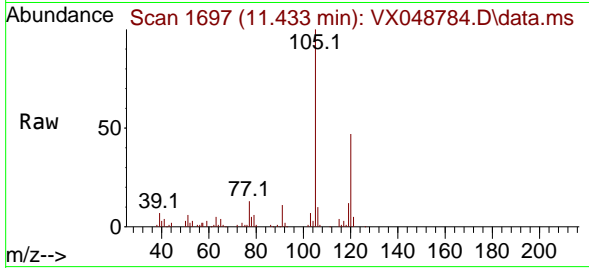




#80
 1,3,5-Trimethylbenzene
 Concen: 2.470 ug/l
 RT: 11.433 min Scan# 11
 Delta R.T. -0.000 min
 Lab File: VX048784.D
 Acq: 09 Dec 2025 15:08

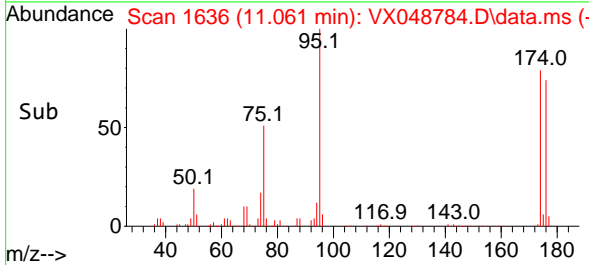
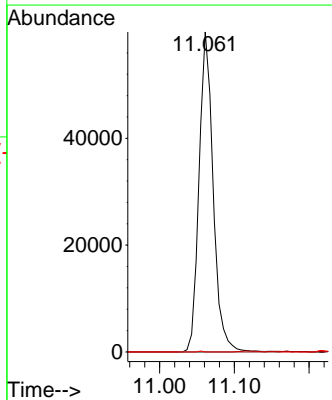
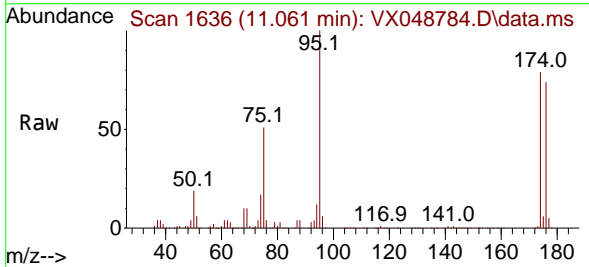
Instrument : MSVOA_X
 ClientSampleId : CHASE-H

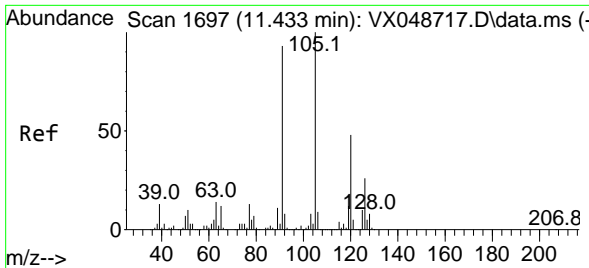
Tgt Ion: 105 Resp: 25203
 Ion Ratio Lower Upper
 105 100
 120 50.5 24.4 73.2



#81
 trans-1,4-Dichloro-2-butene
 Concen: 54.381 ug/l
 RT: 11.061 min Scan# 1636
 Delta R.T. 0.061 min
 Lab File: VX048784.D
 Acq: 09 Dec 2025 15:08

Tgt Ion: 75 Resp: 78547
 Ion Ratio Lower Upper
 75 100
 53 0.0 79.9 119.9#
 89 0.1 67.1 100.7#

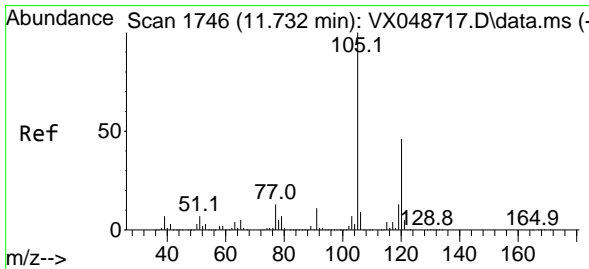
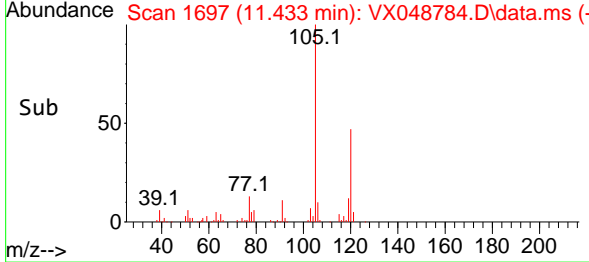
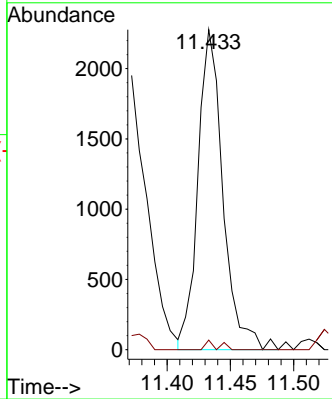
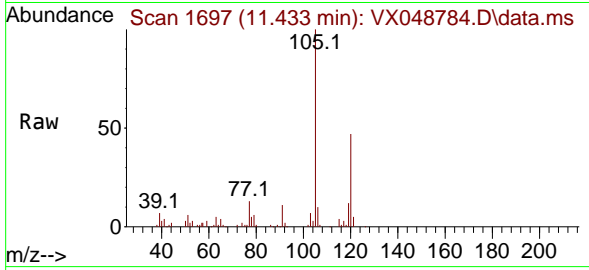




#82
 4-Chlorotoluene
 Concen: 0.306 ug/l
 RT: 11.433 min Scan# 1697
 Delta R.T. -0.000 min
 Lab File: VX048784.D
 Acq: 09 Dec 2025 15:08

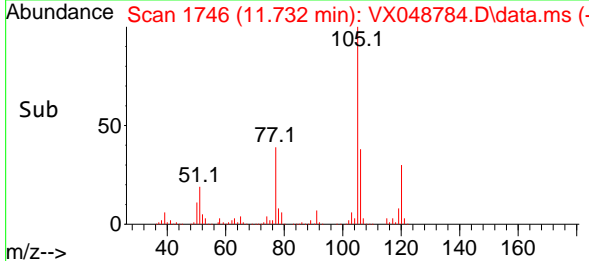
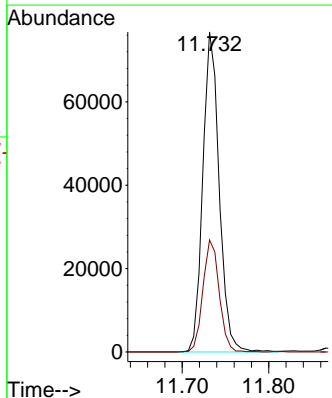
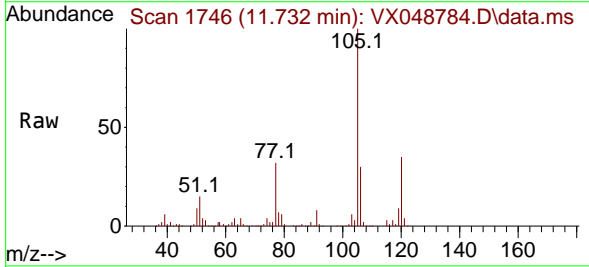
Instrument : MSVOA_X
 ClientSampleId : CHASE-H

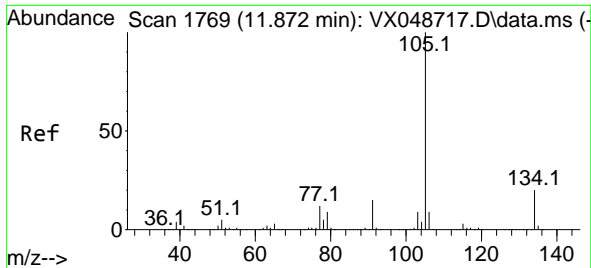
Tgt Ion: 91 Resp: 3133
 Ion Ratio Lower Upper
 91 100
 126 1.4 14.7 44.1#



#84
 1,2,4-Trimethylbenzene
 Concen: 9.796 ug/l
 RT: 11.732 min Scan# 1746
 Delta R.T. 0.000 min
 Lab File: VX048784.D
 Acq: 09 Dec 2025 15:08

Tgt Ion: 105 Resp: 100825
 Ion Ratio Lower Upper
 105 100
 120 34.8 22.3 66.8

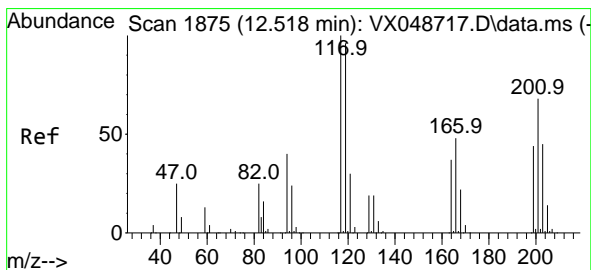
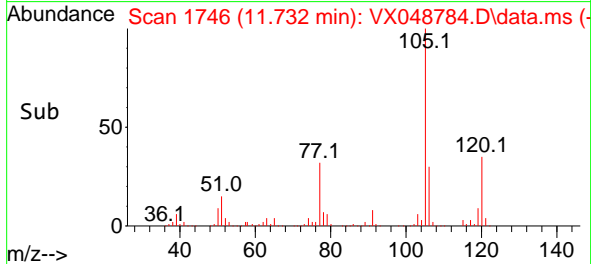
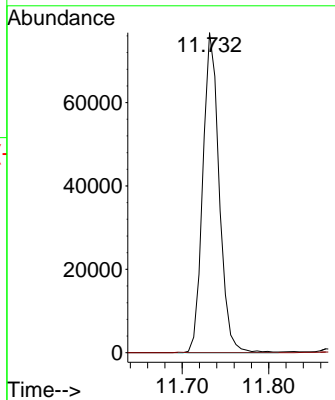
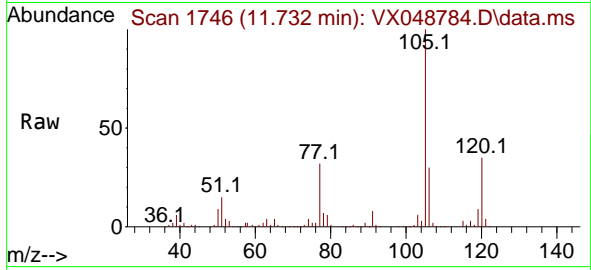




#85
 sec-Butylbenzene
 Concen: 7.847 ug/l
 RT: 11.732 min Scan# 11
 Delta R.T. -0.140 min
 Lab File: VX048784.D
 Acq: 09 Dec 2025 15:08

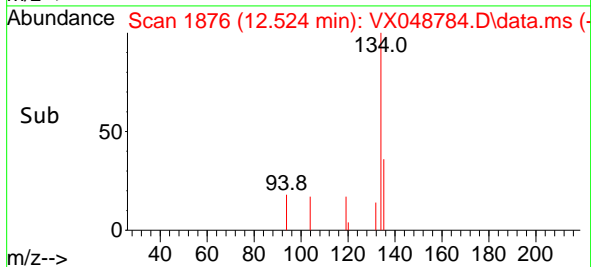
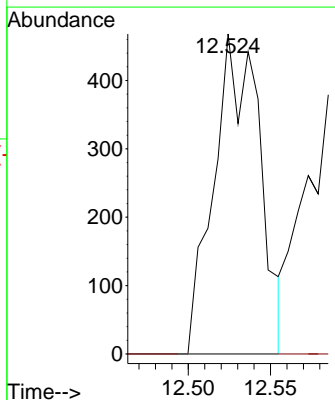
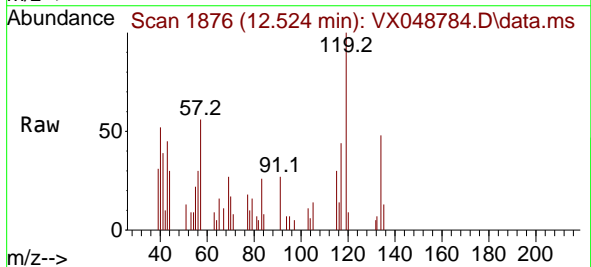
Instrument : MSVOA_X
 ClientSampleId : CHASE-H

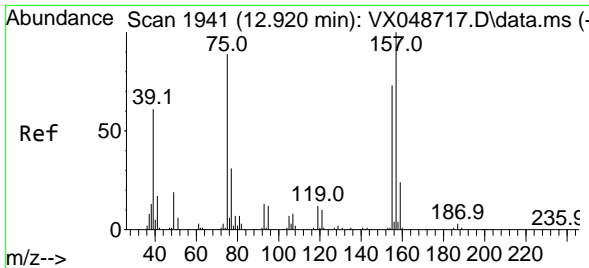
Tgt Ion:105 Resp: 100825
 Ion Ratio Lower Upper
 105 100
 134 0.0 9.8 29.5#



#90
 Hexachloroethane
 Concen: 0.405 ug/l
 RT: 12.524 min Scan# 1876
 Delta R.T. 0.006 min
 Lab File: VX048784.D
 Acq: 09 Dec 2025 15:08

Tgt Ion:117 Resp: 908
 Ion Ratio Lower Upper
 117 100
 201 0.0 36.4 109.1#



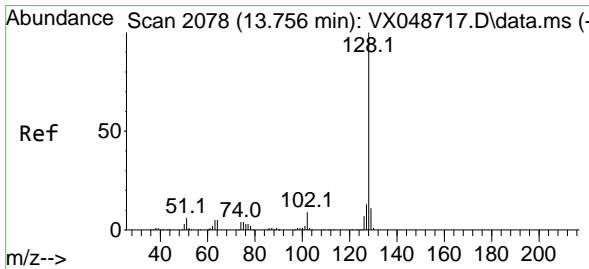
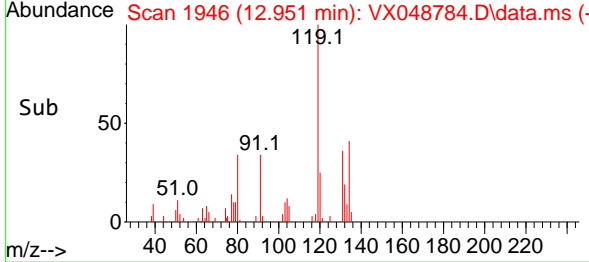
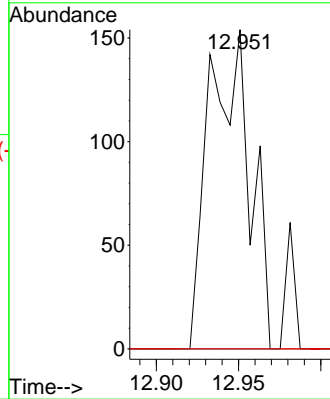
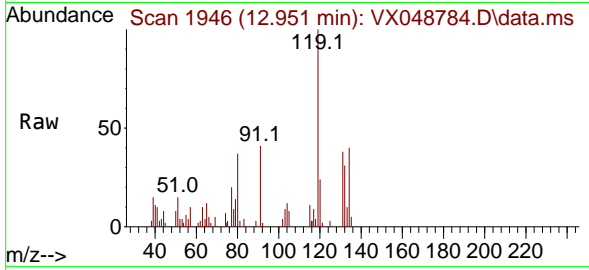


#92
 1,2-Dibromo-3-Chloropropane
 Concen: 0.264 ug/l
 RT: 12.951 min Scan# 1946
 Delta R.T. 0.030 min
 Lab File: VX048784.D
 Acq: 09 Dec 2025 15:08

Instrument : MSVOA_X
 ClientSampleId : CHASE-H

Tgt Ion: 75 Resp: 269

Ion	Ratio	Lower	Upper
75	100		
155	0.0	43.0	129.2#
157	0.0	56.0	168.2#



#95
 Naphthalene
 Concen: 67.852 ug/l
 RT: 13.756 min Scan# 2078
 Delta R.T. -0.000 min
 Lab File: VX048784.D
 Acq: 09 Dec 2025 15:08

Tgt Ion: 128 Resp: 803007

Ion	Ratio	Lower	Upper
128	100		
127	12.9	10.2	15.2
129	10.9	8.6	13.0

