

Data Path : Z:\voasrv\HPCHEM1\MSVOA_X\Data\VX120925\
 Data File : VX048785.D
 Acq On : 09 Dec 2025 15:29
 Operator : JC/MD
 Sample : Q3803-09
 Misc : 5.0mL/MSVOA_X/WATER
 ALS Vial : 19 Sample Multiplier: 1

Instrument :
 MSVOA_X
 ClientSampleId :

Quant Time: Dec 10 00:24:40 2025
 Quant Method : Z:\voasrv\HPCHEM1\MSVOA_X\Method\82X120425W.M
 Quant Title : SW846 8260
 QLast Update : Fri Dec 05 03:27:34 2025
 Response via : Initial Calibration

Compound	R.T.	QIon	Response	Conc	Units	Dev(Min)
Internal Standards						
1) Pentafluorobenzene	5.538	168	156599	50.000	ug/l	0.00
34) 1,4-Difluorobenzene	6.745	114	309105	50.000	ug/l	0.00
63) Chlorobenzene-d5	10.037	117	323314	50.000	ug/l	0.00
72) 1,4-Dichlorobenzene-d4	12.006	152	175708	50.000	ug/l	0.00
System Monitoring Compounds						
33) 1,2-Dichloroethane-d4	5.940	65	105684	50.282	ug/l	0.00
Spiked Amount	50.000	Range 78 - 117	Recovery	=	100.560%	
35) Dibromofluoromethane	5.373	113	95948	45.082	ug/l	0.00
Spiked Amount	50.000	Range 75 - 124	Recovery	=	90.160%	
50) Toluene-d8	8.635	98	343915	46.099	ug/l	0.00
Spiked Amount	50.000	Range 92 - 112	Recovery	=	92.200%	
62) 4-Bromofluorobenzene	11.061	95	148877	57.871	ug/l	0.00
Spiked Amount	50.000	Range 83 - 123	Recovery	=	115.740%	
Target Compounds						
						Qvalue
11) Tert butyl alcohol	2.940	59	9274	27.329	ug/l	95
13) Acrolein	2.233	56	682	41.924	ug/l #	1
15) Acrylonitrile	3.068	53	406	0.384	ug/l #	52
16) Acetone	2.373	43	139304	173.128	ug/l	99
17) Carbon Disulfide	2.520	76	4340	0.822	ug/l	97
18) Methyl Acetate	2.697	43	4416	1.951	ug/l	99
19) Methyl tert-butyl Ether	3.117	73	1221	0.206	ug/l #	39
20) Methylene Chloride	2.794	84	109294	54.343	ug/l	94
25) 2-Butanone	4.550	43	25555	21.519	ug/l #	88
29) Tetrahydrofuran	5.001	42	445	0.491	ug/l #	44
31) Cyclohexane	5.470	56	3656	1.287	ug/l #	84
36) 1,1-Dichloropropene	5.544	75	11820	4.055	ug/l #	49
37) Ethyl Acetate	4.550	43	25555	7.337	ug/l #	71
38) Carbon Tetrachloride	5.538	117	15566	4.714	ug/l #	14
39) Methylcyclohexane	7.373	83	2798	0.812	ug/l	91
40) Benzene	6.025	78	3581776	414.487	ug/l	100
42) 1,2-Dichloroethane	6.025	62	29174	9.539	ug/l #	73
43) Isopropyl Acetate	6.324	43	13870	2.630	ug/l	96
48) Methyl methacrylate	7.781	41	51202	19.298	ug/l #	41
49) 1,4-Dioxane	7.781	88	20	0.548	ug/l #	1
51) 4-Methyl-2-Pentanone	8.555	43	86886	26.540	ug/l #	77
52) Toluene	8.702	92	1272701	244.238	ug/l	99
53) t-1,3-Dichloropropene	8.702	75	14342	4.415	ug/l #	1
54) cis-1,3-Dichloropropene	8.531	75	19131	5.479	ug/l #	59
55) 1,1,2-Trichloroethane	8.994	97	8206	3.914	ug/l #	20
56) Ethyl methacrylate	8.994	69	1112	0.339	ug/l #	19
57) 1,3-Dichloropropane	9.464	76	1469	0.421	ug/l #	45
59) 2-Hexanone	9.415	43	3199	1.392	ug/l	91
67) Ethyl Benzene	10.177	91	116427	10.082	ug/l	99
68) m/p-Xylenes	10.281	106	229008	50.909	ug/l	98
69) o-Xylene	10.622	106	145785	34.585	ug/l	99
70) Styrene	10.640	104	52786	7.295	ug/l #	64
73) Isopropylbenzene	10.945	105	4046	0.342	ug/l	94
74) N-ethyl acetate	10.835	43	3142	0.611	ug/l #	1
76) 1,2,3-Trichloropropane	11.061	75	74527	22.773	ug/l #	30
78) n-propylbenzene	11.286	91	8954	0.653	ug/l	98

Data Path : Z:\voasrv\HPCHEM1\MSVOA_X\Data\VX120925\
 Data File : VX048785.D
 Acq On : 09 Dec 2025 15:29
 Operator : JC/MD
 Sample : Q3803-09
 Misc : 5.0mL/MSVOA_X/WATER
 ALS Vial : 19 Sample Multiplier: 1

Instrument :
 MSVOA_X
 ClientSampleId :

Quant Time: Dec 10 00:24:40 2025
 Quant Method : Z:\voasrv\HPCHEM1\MSVOA_X\Method\82X120425W.M
 Quant Title : SW846 8260
 QLast Update : Fri Dec 05 03:27:34 2025
 Response via : Initial Calibration

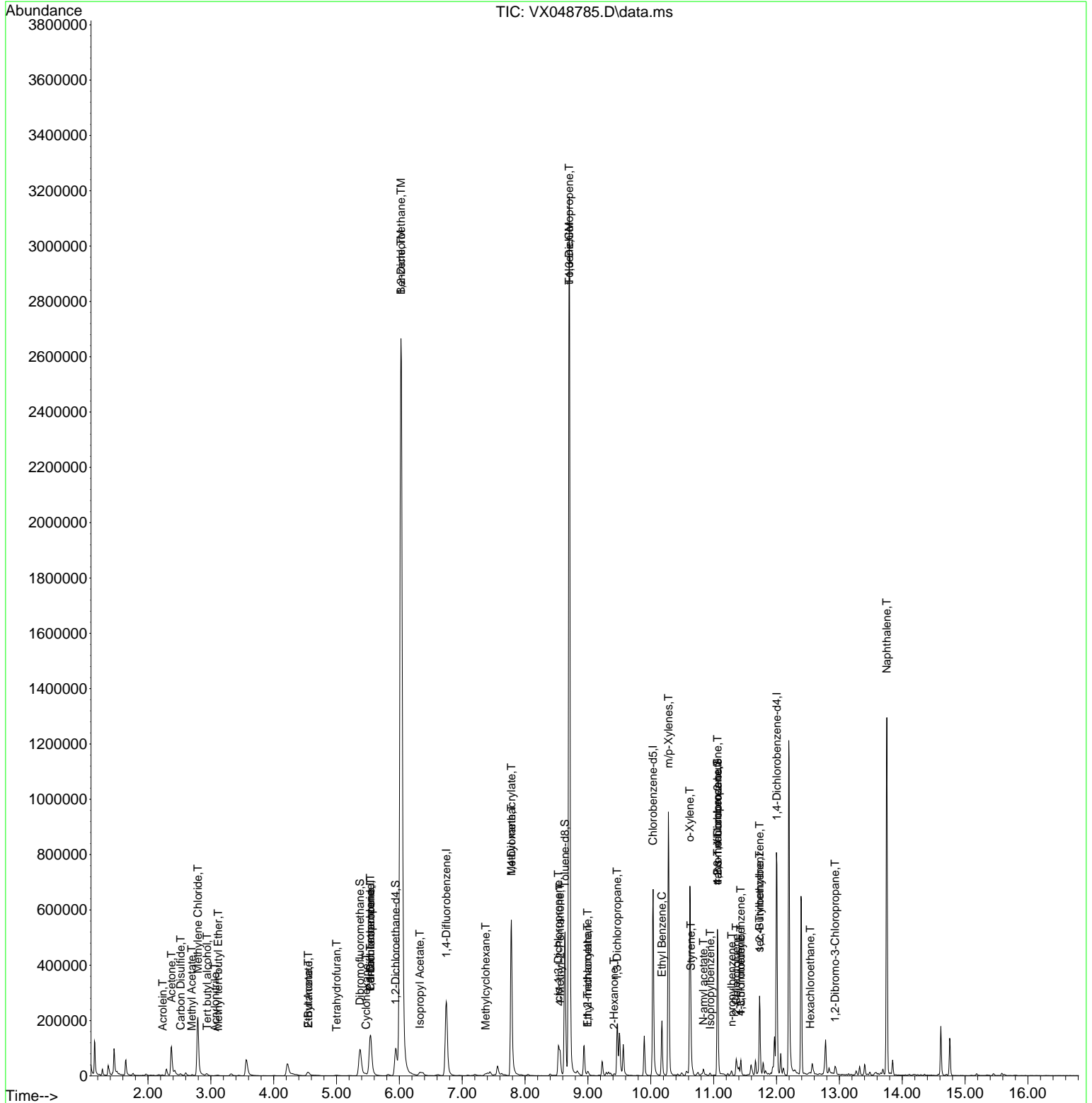
Compound	R.T.	QIon	Response	Conc	Units	Dev(Min)
79) 2-Chlorotoluene	11.360	91	5211	0.623	ug/l #	55
80) 1,3,5-Trimethylbenzene	11.433	105	23157	2.379	ug/l	99
81) trans-1,4-Dichloro-2-b...	11.061	75	74527	54.095	ug/l #	3
82) 4-Chlorotoluene	11.433	91	2806	0.288	ug/l #	45
84) 1,2,4-Trimethylbenzene	11.732	105	107648	10.965	ug/l	76
85) sec-Butylbenzene	11.732	105	107648	8.783	ug/l #	57
90) Hexachloroethane	12.536	117	747	0.349	ug/l #	13
92) 1,2-Dibromo-3-Chloropr...	12.933	75	241	0.248	ug/l #	1
95) Naphthalene	13.756	128	780154	68.853	ug/l	100

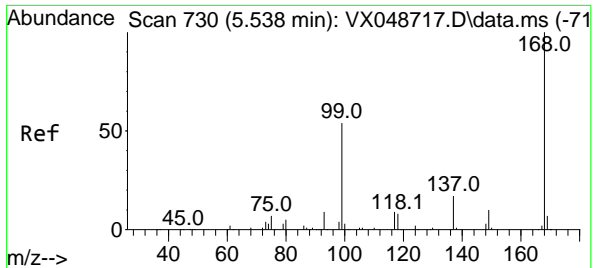
(#) = qualifier out of range (m) = manual integration (+) = signals summed

Data Path : Z:\voasrv\HPCHEM1\MSVOA_X\Data\VX120925\
 Data File : VX048785.D
 Acq On : 09 Dec 2025 15:29
 Operator : JC/MD
 Sample : Q3803-09
 Misc : 5.0mL/MSVOA_X/WATER
 ALS Vial : 19 Sample Multiplier: 1

Instrument :
 MSVOA_X
 ClientSampleId :

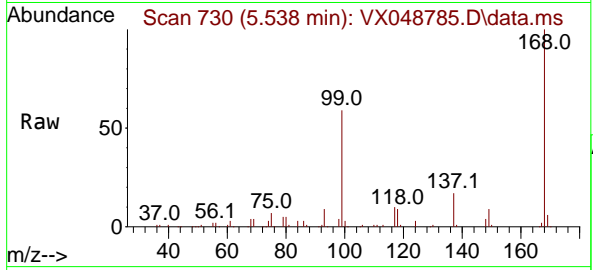
Quant Time: Dec 10 00:24:40 2025
 Quant Method : Z:\voasrv\HPCHEM1\MSVOA_X\Method\82X120425W.M
 Quant Title : SW846 8260
 QLast Update : Fri Dec 05 03:27:34 2025
 Response via : Initial Calibration



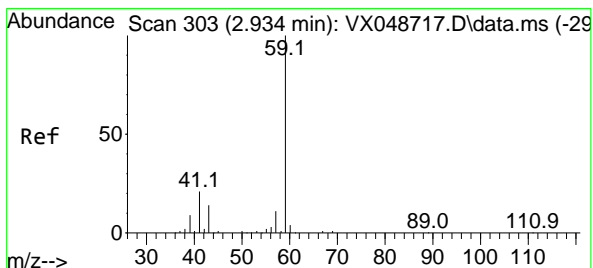
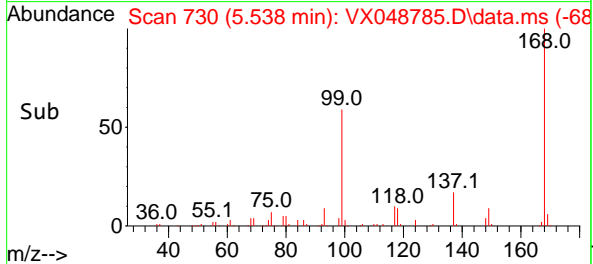
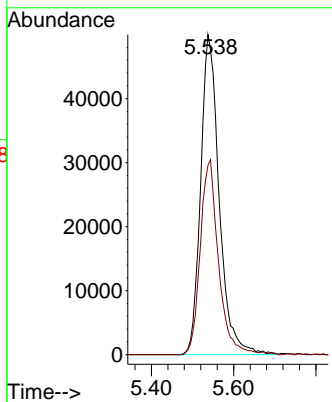


#1
 Pentafluorobenzene
 Concen: 50.000 ug/l
 RT: 5.538 min Scan# 71
 Delta R.T. -0.000 min
 Lab File: VX048785.D
 Acq: 09 Dec 2025 15:29

Instrument : MSVOA_X
 ClientSampleId :

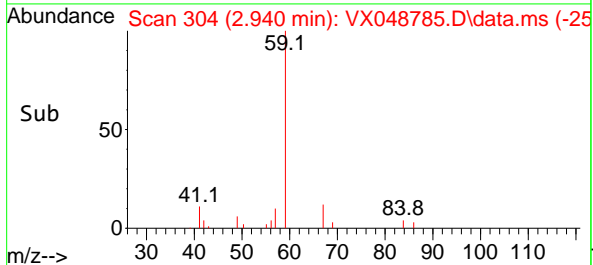
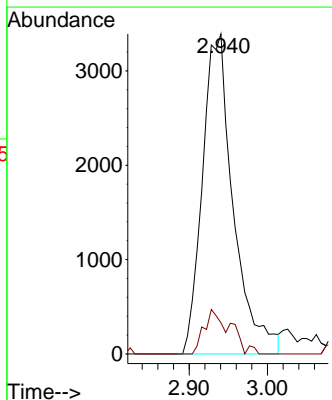
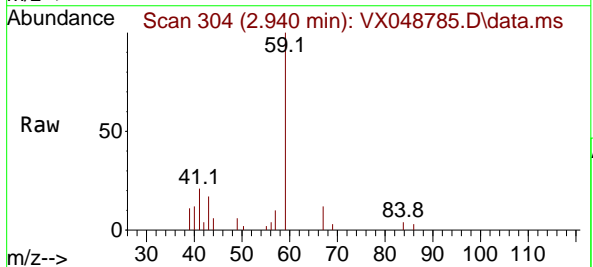


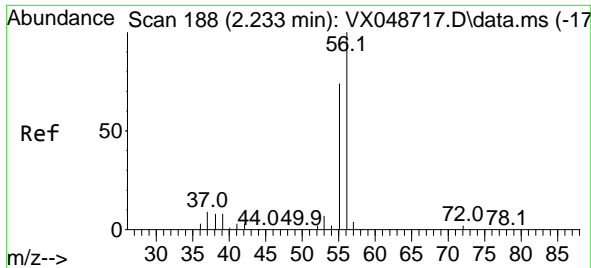
Tgt Ion:168 Resp: 156599
 Ion Ratio Lower Upper
 168 100
 99 59.2 44.2 66.4



#11
 Tert butyl alcohol
 Concen: 27.329 ug/l
 RT: 2.940 min Scan# 304
 Delta R.T. 0.006 min
 Lab File: VX048785.D
 Acq: 09 Dec 2025 15:29

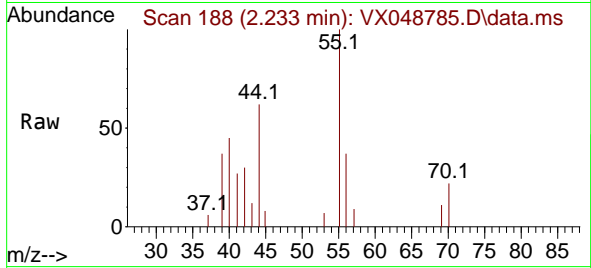
Tgt Ion: 59 Resp: 9274
 Ion Ratio Lower Upper
 59 100
 57 8.1 8.1 12.1



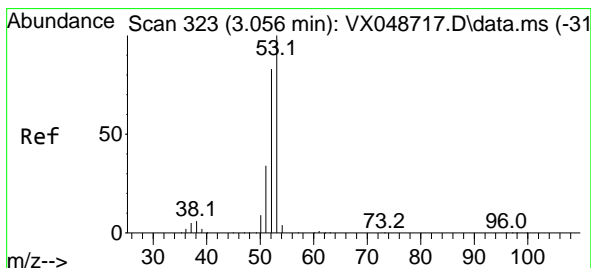
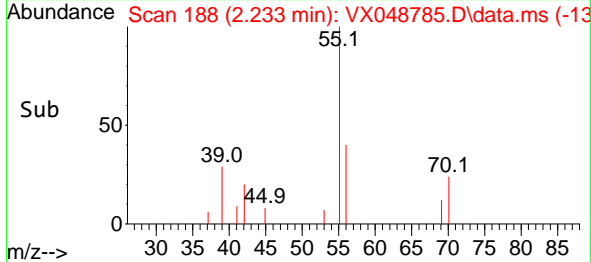
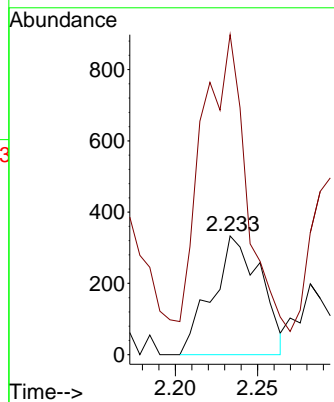


#13
 Acrolein
 Concen: 41.924 ug/l
 RT: 2.233 min Scan# 11
 Delta R.T. -0.000 min
 Lab File: VX048785.D
 Acq: 09 Dec 2025 15:29

Instrument :
 MSVOA_X
 ClientSampleId :

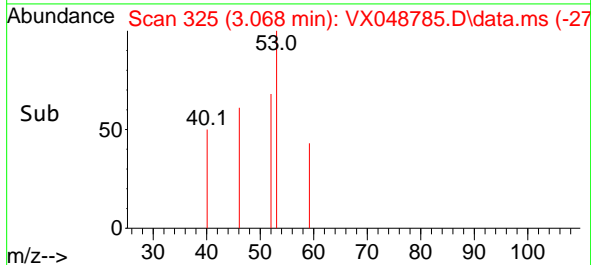
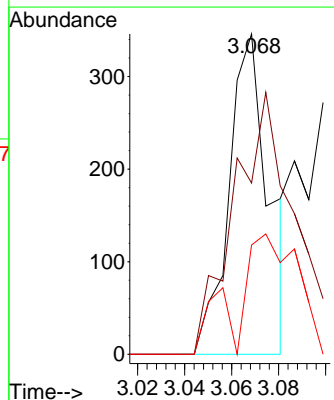
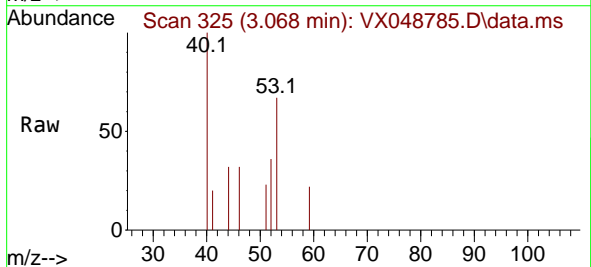


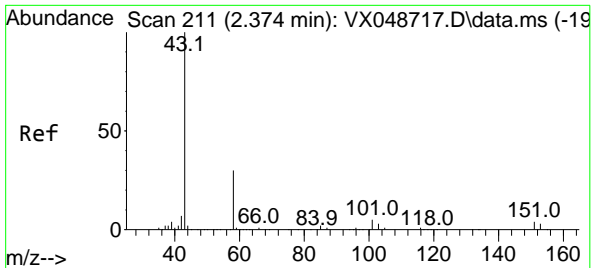
Tgt Ion: 56 Resp: 682
 Ion Ratio Lower Upper
 56 100
 55 263.9 55.8 83.6#



#15
 Acrylonitrile
 Concen: 0.384 ug/l
 RT: 3.068 min Scan# 325
 Delta R.T. 0.012 min
 Lab File: VX048785.D
 Acq: 09 Dec 2025 15:29

Tgt Ion: 53 Resp: 406
 Ion Ratio Lower Upper
 53 100
 52 121.2 66.3 99.5#
 51 0.0 28.7 43.1#

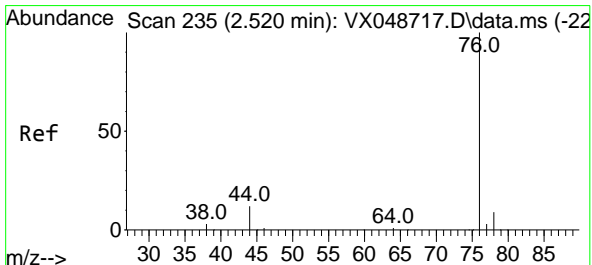
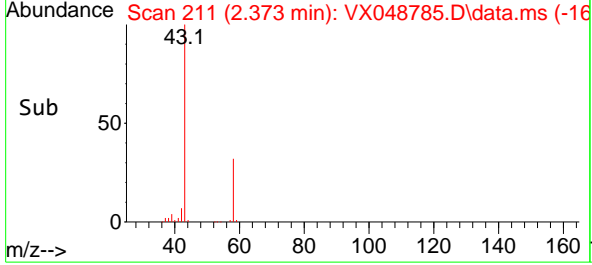
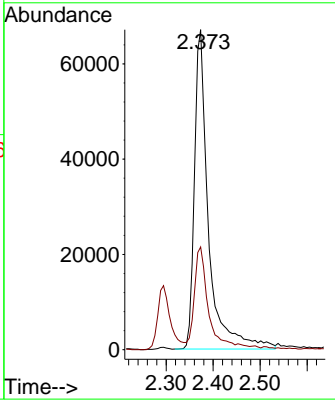
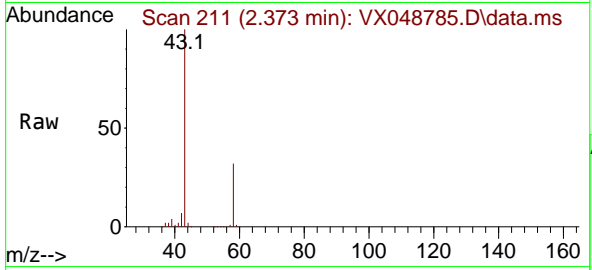




#16
 Acetone
 Concen: 173.128 ug/l
 RT: 2.373 min Scan# 211
 Delta R.T. -0.000 min
 Lab File: VX048785.D
 Acq: 09 Dec 2025 15:29

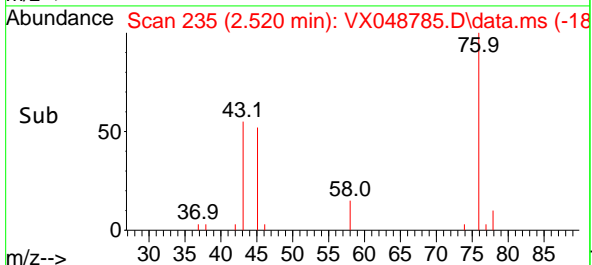
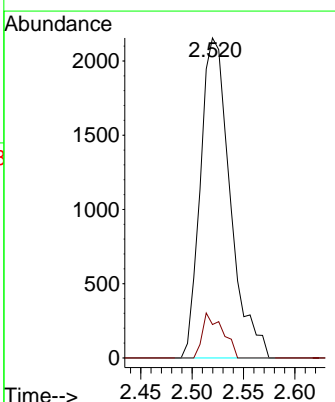
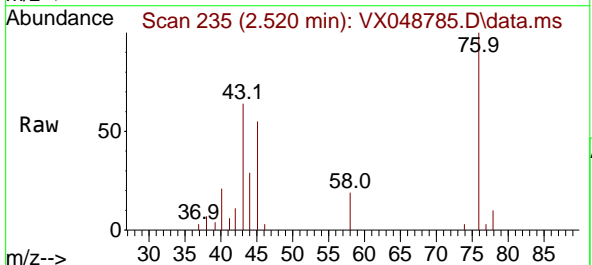
Instrument : MSVOA_X
 ClientSampleId :

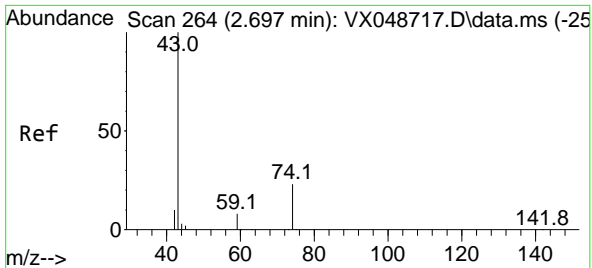
Tgt Ion: 43 Resp: 139304
 Ion Ratio Lower Upper
 43 100
 58 31.7 25.0 37.4



#17
 Carbon Disulfide
 Concen: 0.822 ug/l
 RT: 2.520 min Scan# 235
 Delta R.T. -0.000 min
 Lab File: VX048785.D
 Acq: 09 Dec 2025 15:29

Tgt Ion: 76 Resp: 4340
 Ion Ratio Lower Upper
 76 100
 78 10.4 7.4 11.2

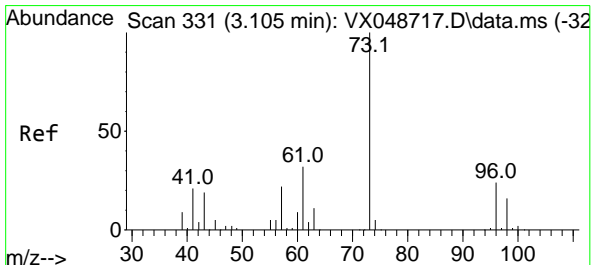
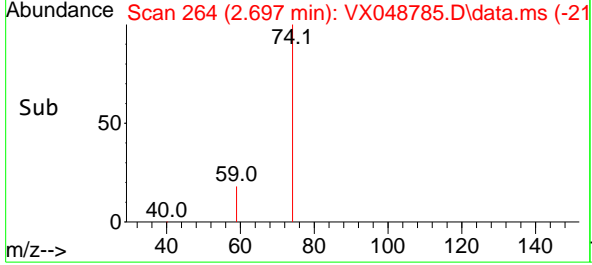
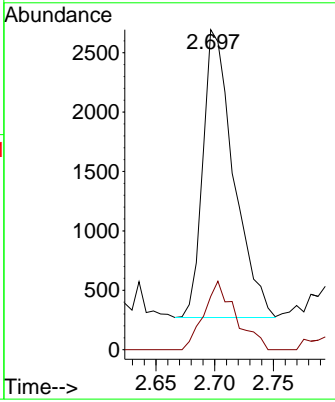
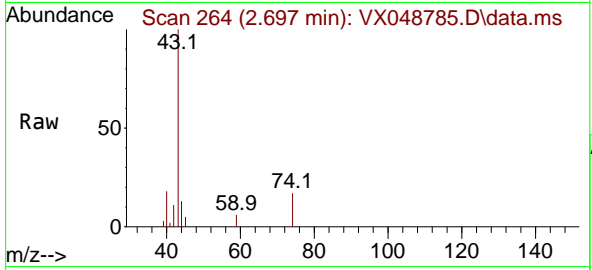




#18
 Methyl Acetate
 Concen: 1.951 ug/l
 RT: 2.697 min Scan# 201
 Delta R.T. -0.000 min
 Lab File: VX048785.D
 Acq: 09 Dec 2025 15:29

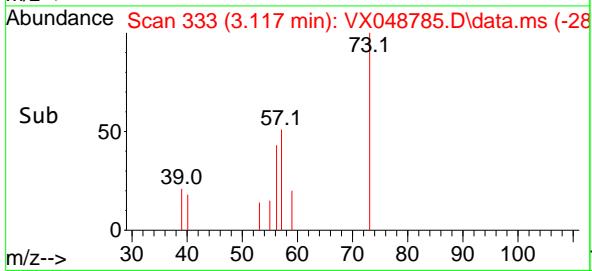
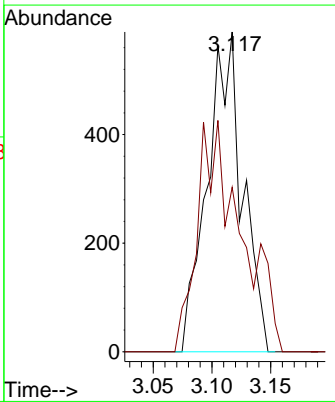
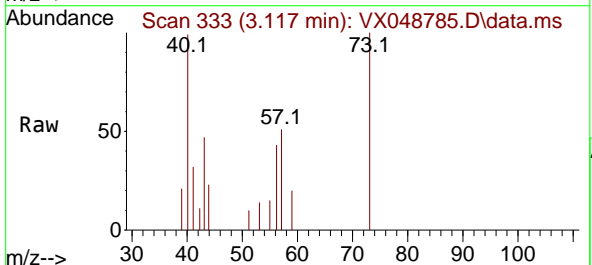
Instrument : MSVOA_X
 ClientSampleId :

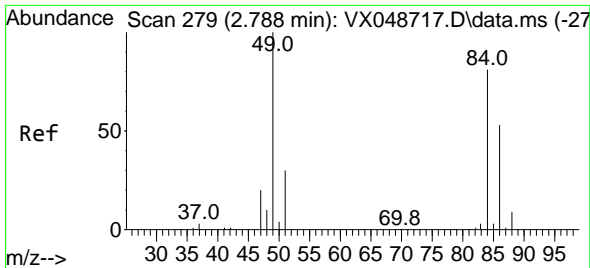
Tgt Ion	43	74	Resp	4416
Ion Ratio	100	24.6	19.2	28.8
Lower				
Upper				



#19
 Methyl tert-butyl Ether
 Concen: 0.206 ug/l
 RT: 3.117 min Scan# 333
 Delta R.T. 0.012 min
 Lab File: VX048785.D
 Acq: 09 Dec 2025 15:29

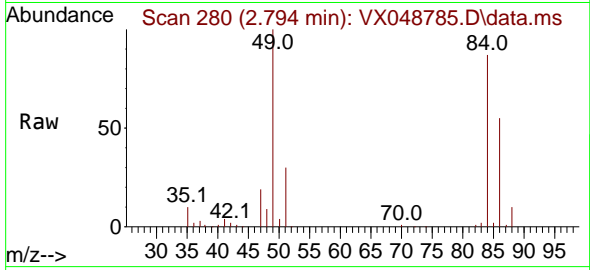
Tgt Ion	73	57	Resp	1221
Ion Ratio	100	51.4	17.8	26.6#
Lower				
Upper				





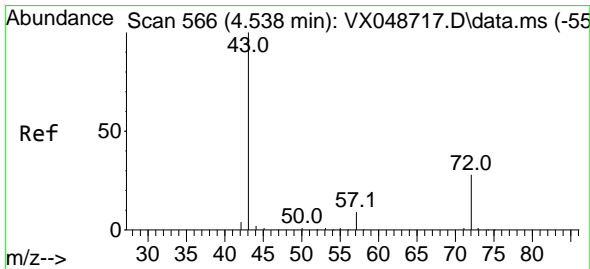
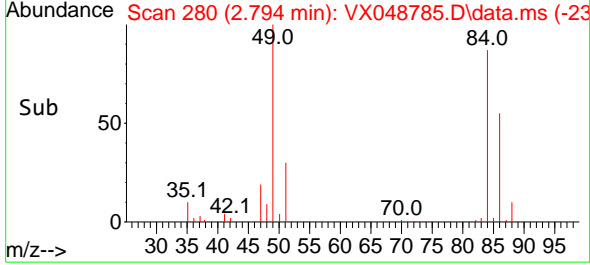
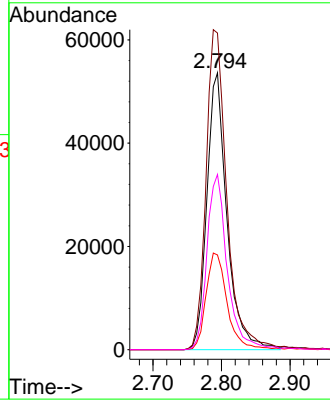
#20
 Methylene Chloride
 Concen: 54.343 ug/l
 RT: 2.794 min Scan# 21
 Delta R.T. 0.006 min
 Lab File: VX048785.D
 Acq: 09 Dec 2025 15:29

Instrument :
 MSVOA_X
 ClientSampleId :



Tgt Ion: 84 Resp: 109294

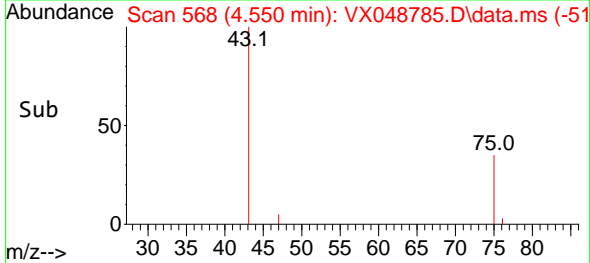
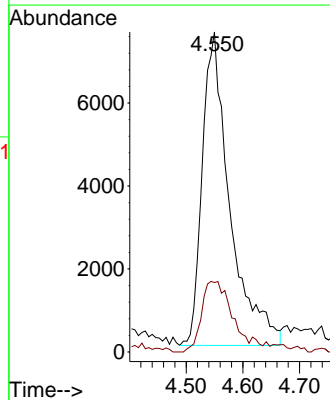
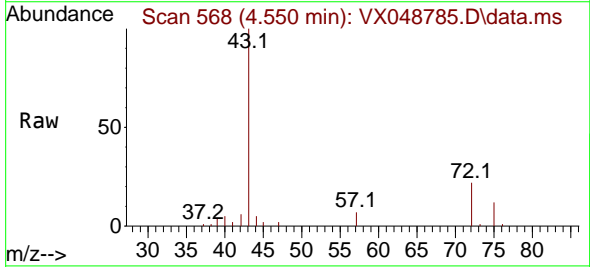
Ion	Ratio	Lower	Upper
84	100		
49	114.4	98.7	148.1
51	34.2	29.4	44.2
86	63.3	52.5	78.7

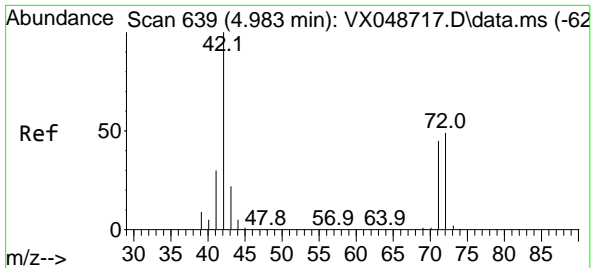


#25
 2-Butanone
 Concen: 21.519 ug/l
 RT: 4.550 min Scan# 568
 Delta R.T. 0.012 min
 Lab File: VX048785.D
 Acq: 09 Dec 2025 15:29

Tgt Ion: 43 Resp: 25555

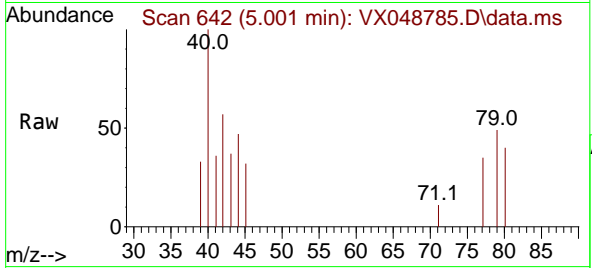
Ion	Ratio	Lower	Upper
43	100		
72	22.1	22.6	34.0



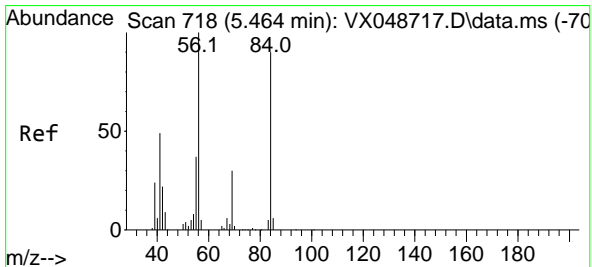
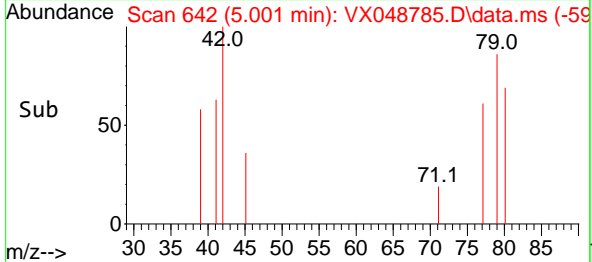
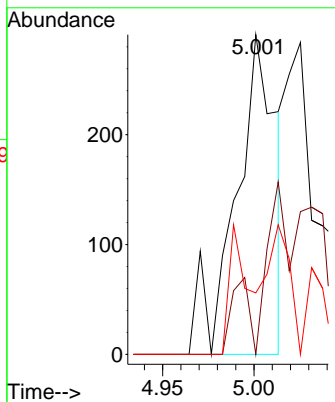


#29
 Tetrahydrofuran
 Concen: 0.491 ug/l
 RT: 5.001 min Scan# 642
 Delta R.T. 0.018 min
 Lab File: VX048785.D
 Acq: 09 Dec 2025 15:29

Instrument : MSVOA_X
 ClientSampleId :

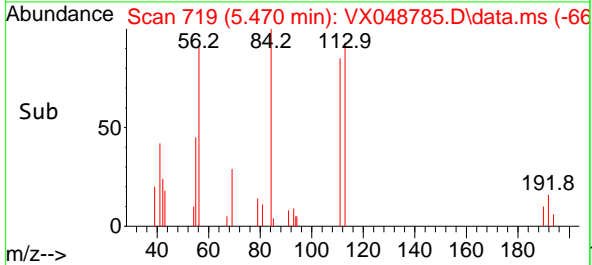
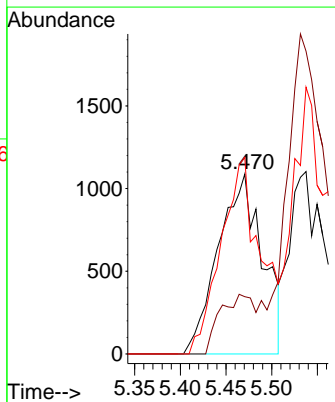
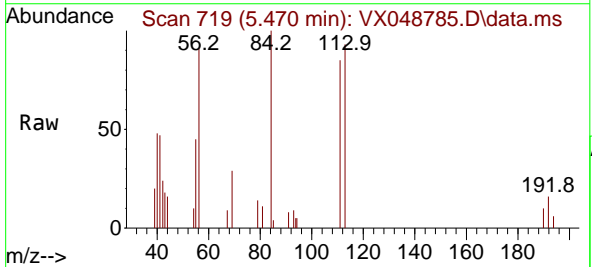


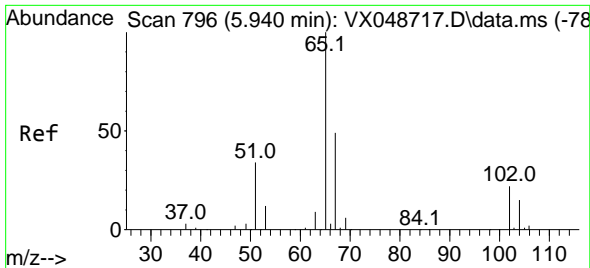
Tgt Ion: 42 Resp: 445
 Ion Ratio Lower Upper
 42 100
 72 0.0 39.4 59.2#
 71 19.3 35.8 53.6#



#31
 Cyclohexane
 Concen: 1.287 ug/l
 RT: 5.470 min Scan# 719
 Delta R.T. 0.006 min
 Lab File: VX048785.D
 Acq: 09 Dec 2025 15:29

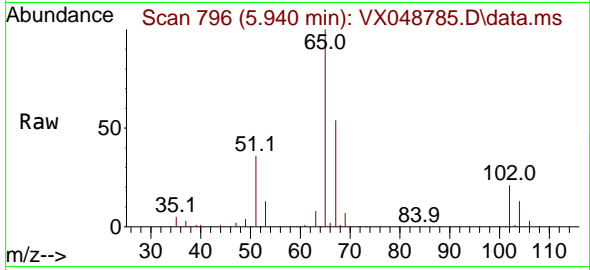
Tgt Ion: 56 Resp: 3656
 Ion Ratio Lower Upper
 56 100
 69 31.8 24.2 36.2
 84 109.4 72.1 108.1#



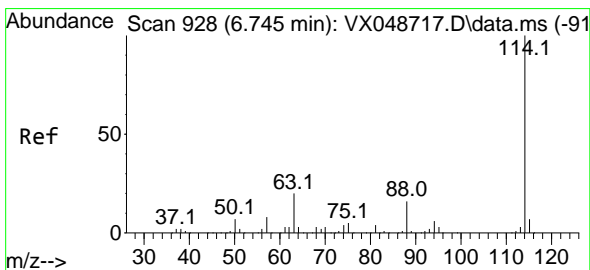
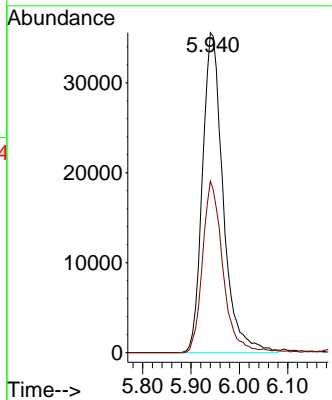
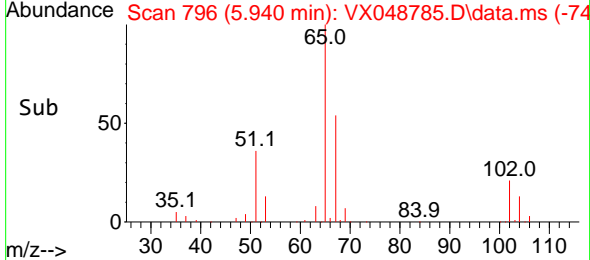


#33
 1,2-Dichloroethane-d4
 Concen: 50.282 ug/l
 RT: 5.940 min Scan# 796
 Delta R.T. -0.000 min
 Lab File: VX048785.D
 Acq: 09 Dec 2025 15:29

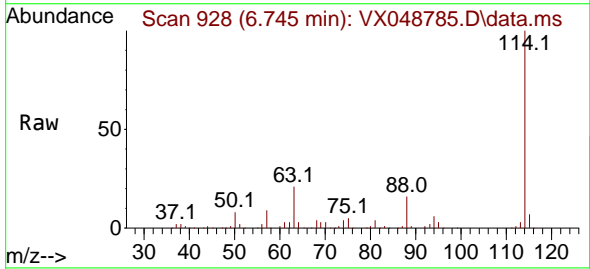
Instrument : MSVOA_X
 ClientSampleId :



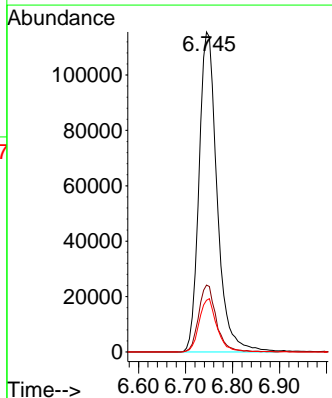
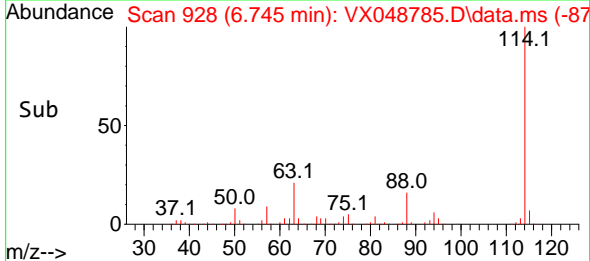
Tgt Ion: 65 Resp: 105684
 Ion Ratio Lower Upper
 65 100
 67 53.2 0.0 107.4

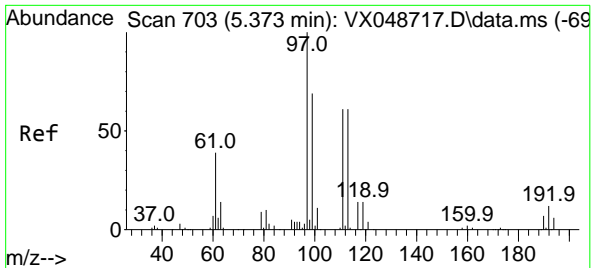


#34
 1,4-Difluorobenzene
 Concen: 50.000 ug/l
 RT: 6.745 min Scan# 928
 Delta R.T. -0.000 min
 Lab File: VX048785.D
 Acq: 09 Dec 2025 15:29



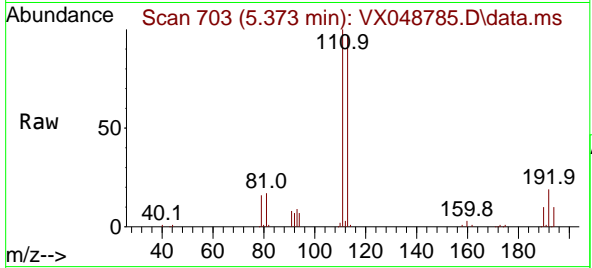
Tgt Ion: 114 Resp: 309105
 Ion Ratio Lower Upper
 114 100
 63 20.9 0.0 39.0
 88 16.1 0.0 31.8



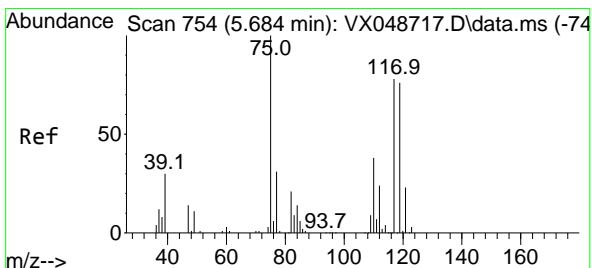
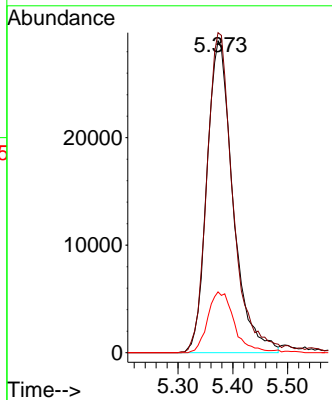
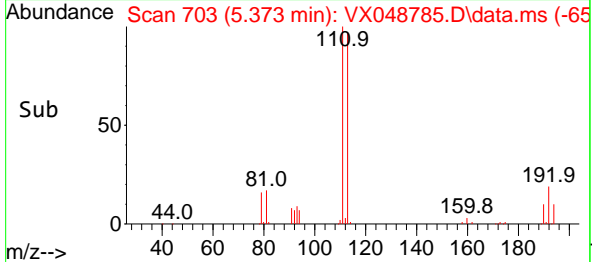


#35
 Dibromofluoromethane
 Concen: 45.082 ug/l
 RT: 5.373 min Scan# 703
 Delta R.T. -0.000 min
 Lab File: VX048785.D
 Acq: 09 Dec 2025 15:29

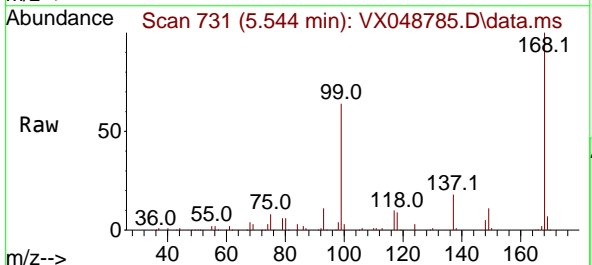
Instrument : MSVOA_X
 ClientSampleId :



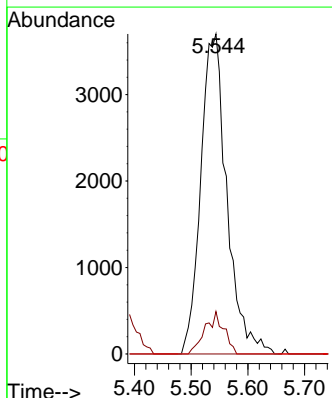
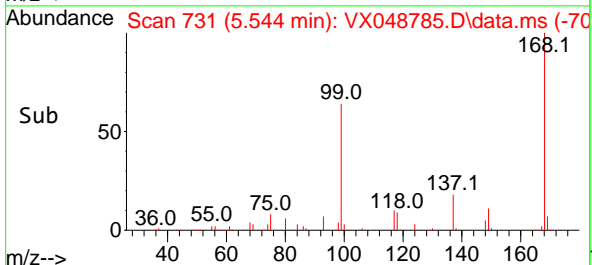
Tgt Ion:113 Resp: 95948
 Ion Ratio Lower Upper
 113 100
 111 101.9 79.5 119.3
 192 19.6 16.1 24.1

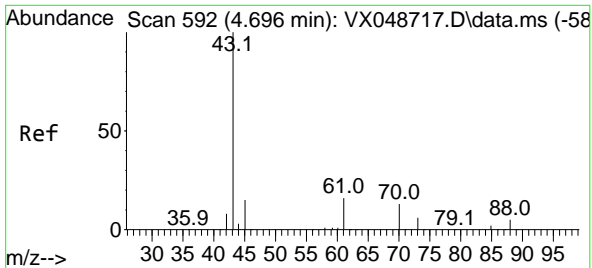


#36
 1,1-Dichloropropene
 Concen: 4.055 ug/l
 RT: 5.544 min Scan# 731
 Delta R.T. -0.140 min
 Lab File: VX048785.D
 Acq: 09 Dec 2025 15:29



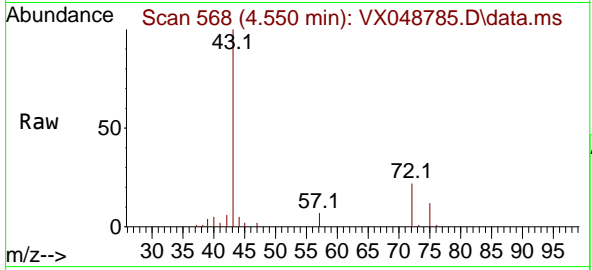
Tgt Ion: 75 Resp: 11820
 Ion Ratio Lower Upper
 75 100
 110 9.6 18.6 55.8#
 77 0.0 25.3 37.9#





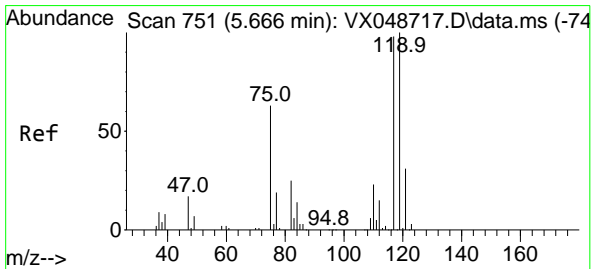
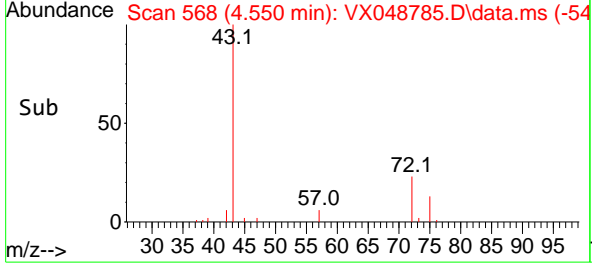
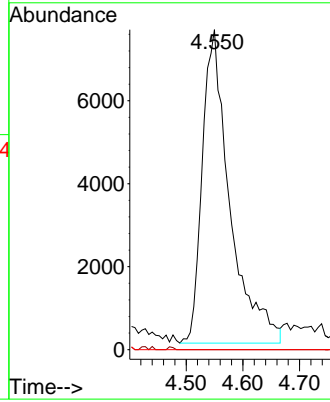
#37
 Ethyl Acetate
 Concen: 7.337 ug/l
 RT: 4.550 min Scan# 50
 Delta R.T. -0.146 min
 Lab File: VX048785.D
 Acq: 09 Dec 2025 15:29

Instrument : MSVOA_X
 ClientSampleId :

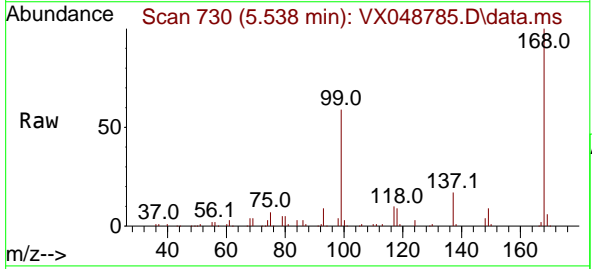


Tgt Ion: 43 Resp: 25555

Ion	Ratio	Lower	Upper
43	100		
61	0.0	9.7	14.5#
70	0.0	8.2	12.4#

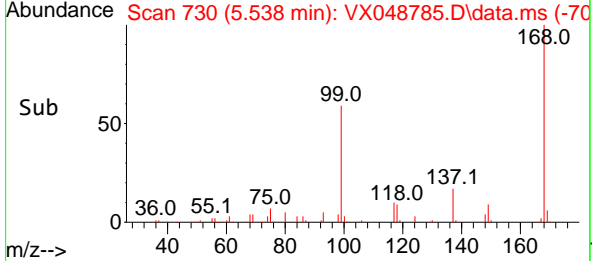
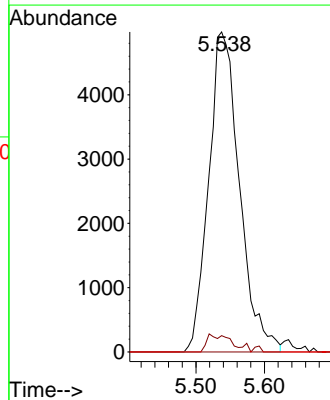


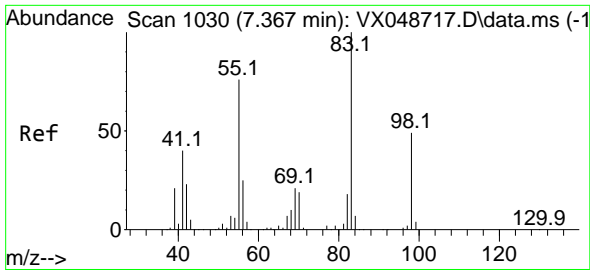
#38
 Carbon Tetrachloride
 Concen: 4.714 ug/l
 RT: 5.538 min Scan# 730
 Delta R.T. -0.128 min
 Lab File: VX048785.D
 Acq: 09 Dec 2025 15:29



Tgt Ion: 117 Resp: 15566

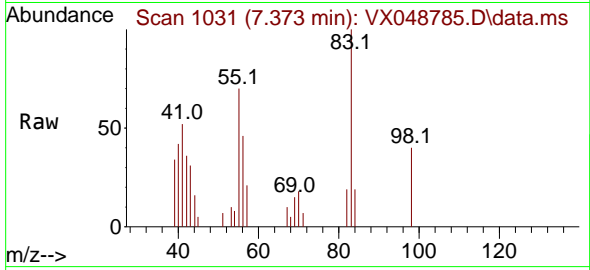
Ion	Ratio	Lower	Upper
117	100		
119	5.1	80.5	120.7#
121	0.0	25.4	38.0#





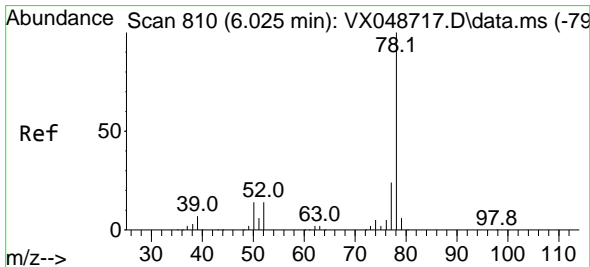
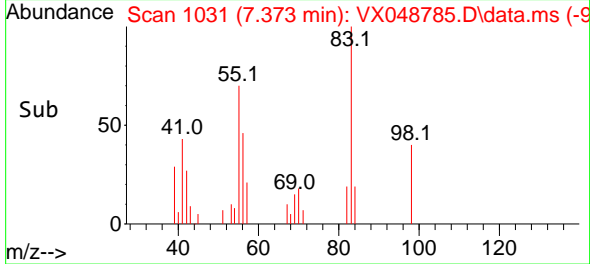
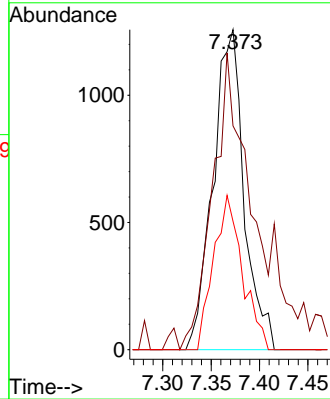
#39
 Methylcyclohexane
 Concen: 0.812 ug/l
 RT: 7.373 min Scan# 1031
 Delta R.T. 0.006 min
 Lab File: VX048785.D
 Acq: 09 Dec 2025 15:29

Instrument :
 MSVOA_X
 ClientSampleId :



Tgt Ion: 83 Resp: 2798

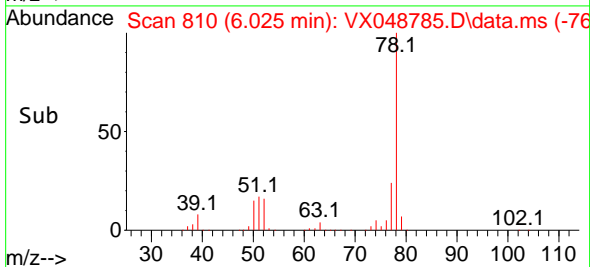
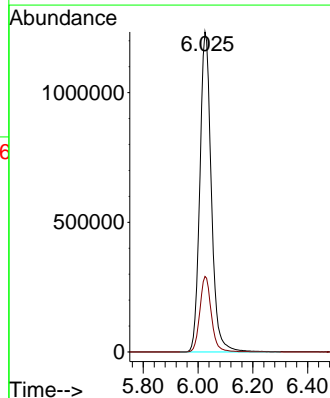
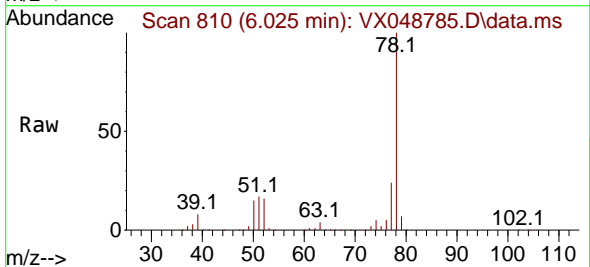
Ion	Ratio	Lower	Upper
83	100		
55	70.0	60.6	90.8
98	40.1	39.3	58.9

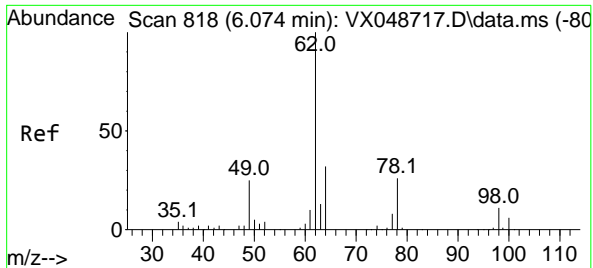


#40
 Benzene
 Concen: 414.487 ug/l
 RT: 6.025 min Scan# 810
 Delta R.T. -0.000 min
 Lab File: VX048785.D
 Acq: 09 Dec 2025 15:29

Tgt Ion: 78 Resp: 3581776

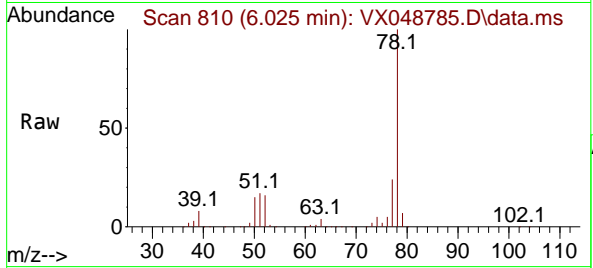
Ion	Ratio	Lower	Upper
78	100		
77	23.6	18.8	28.2



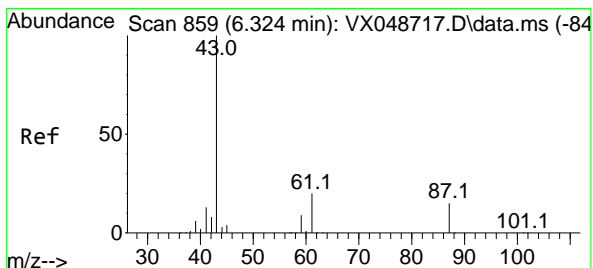
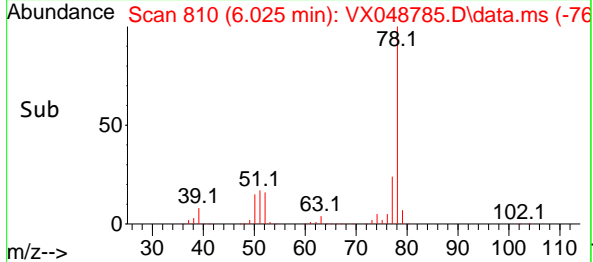
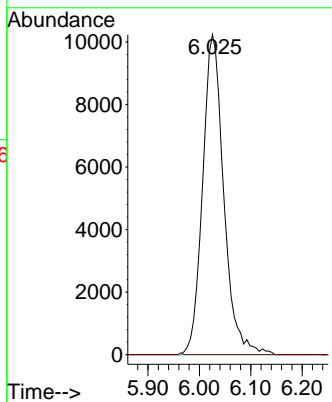


#42
 1,2-Dichloroethane
 Concen: 9.539 ug/l
 RT: 6.025 min Scan# 810
 Delta R.T. -0.049 min
 Lab File: VX048785.D
 Acq: 09 Dec 2025 15:29

Instrument : MSVOA_X
 ClientSampleId :

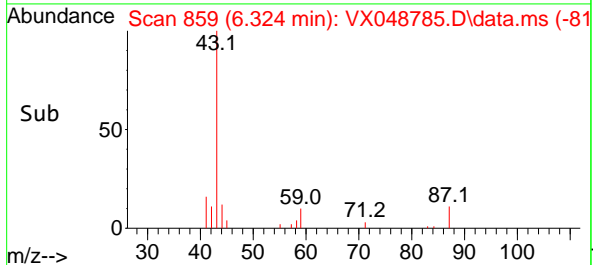
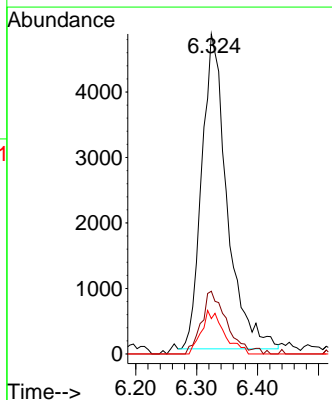
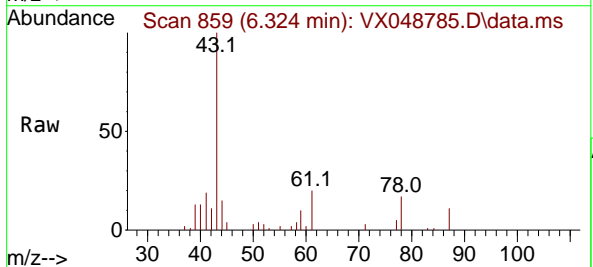


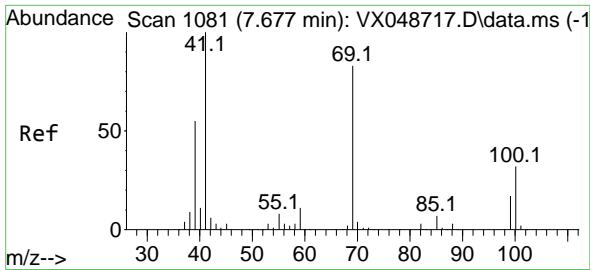
Tgt Ion: 62 Resp: 29174
 Ion Ratio Lower Upper
 62 100
 98 0.0 0.0 20.2



#43
 Isopropyl Acetate
 Concen: 2.630 ug/l
 RT: 6.324 min Scan# 859
 Delta R.T. -0.000 min
 Lab File: VX048785.D
 Acq: 09 Dec 2025 15:29

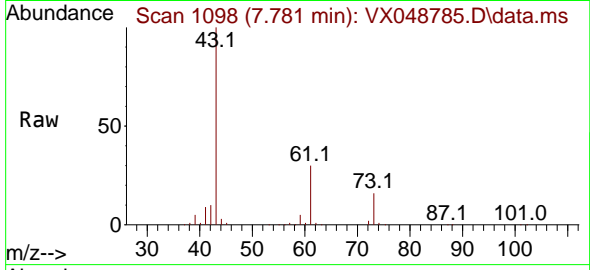
Tgt Ion: 43 Resp: 13870
 Ion Ratio Lower Upper
 43 100
 61 20.1 16.8 25.2
 87 12.3 11.8 17.6



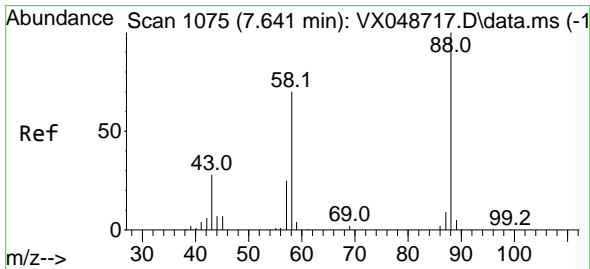
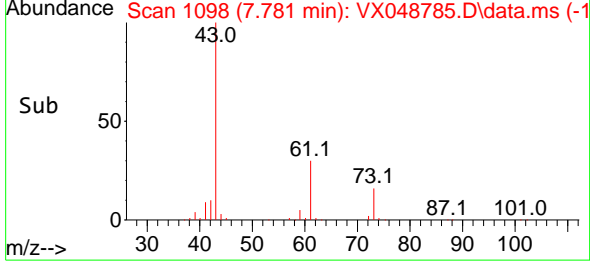
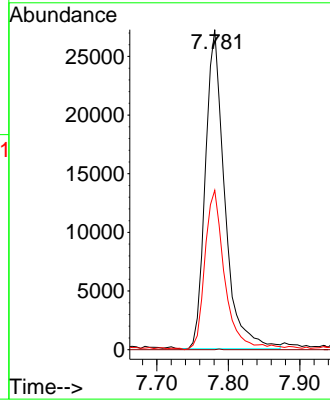


#48
 Methyl methacrylate
 Concen: 19.298 ug/l
 RT: 7.781 min Scan# 1098
 Delta R.T. 0.104 min
 Lab File: VX048785.D
 Acq: 09 Dec 2025 15:29

Instrument : MSVOA_X
 ClientSampleId :

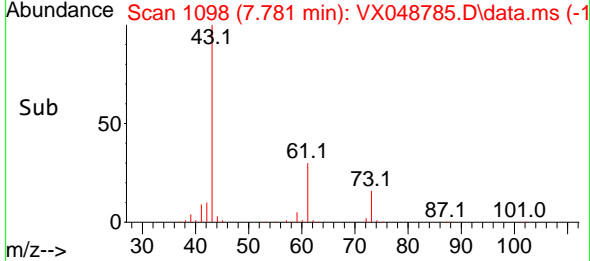
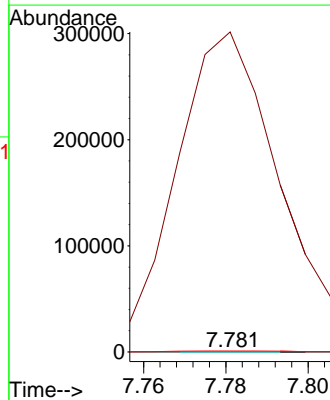
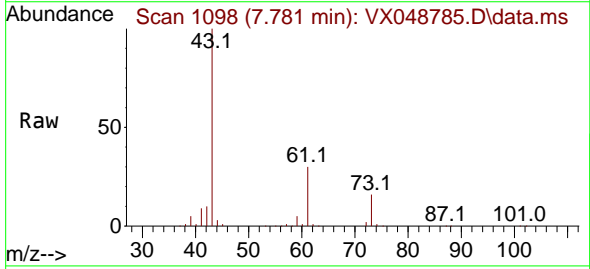


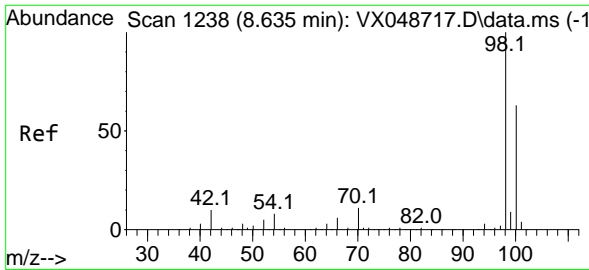
Tgt Ion: 41 Resp: 51202
 Ion Ratio Lower Upper
 41 100
 69 0.0 68.5 102.7#
 39 51.4 43.5 65.3



#49
 1,4-Dioxane
 Concen: 0.548 ug/l
 RT: 7.781 min Scan# 1098
 Delta R.T. 0.140 min
 Lab File: VX048785.D
 Acq: 09 Dec 2025 15:29

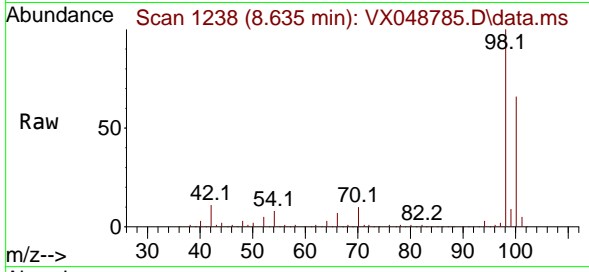
Tgt Ion: 88 Resp: 20
 Ion Ratio Lower Upper
 88 100
 43 2870425.0 28.6 43.0#
 58 11535.0 58.0 87.0#



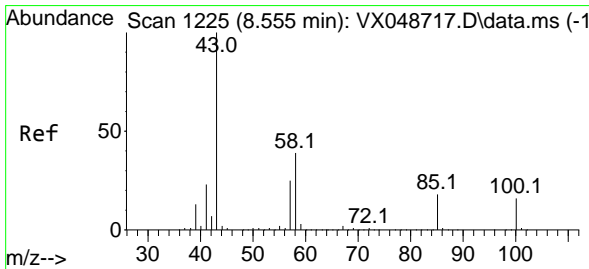
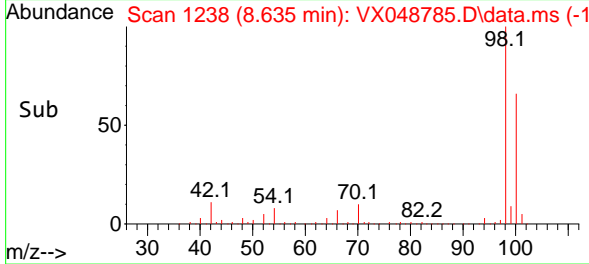
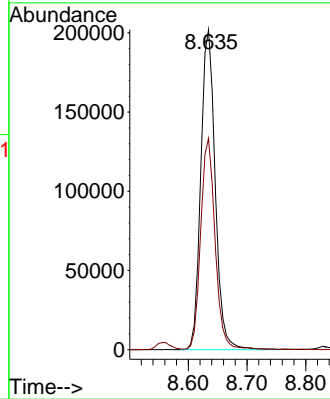


#50
 Toluene-d8
 Concen: 46.099 ug/l
 RT: 8.635 min Scan# 11
 Delta R.T. -0.000 min
 Lab File: VX048785.D
 Acq: 09 Dec 2025 15:29

Instrument :
 MSVOA_X
 ClientSampleId :

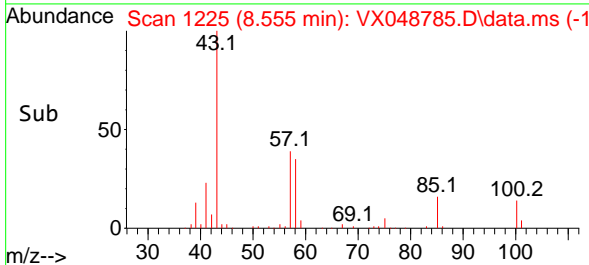
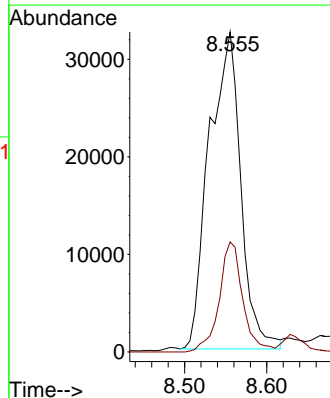
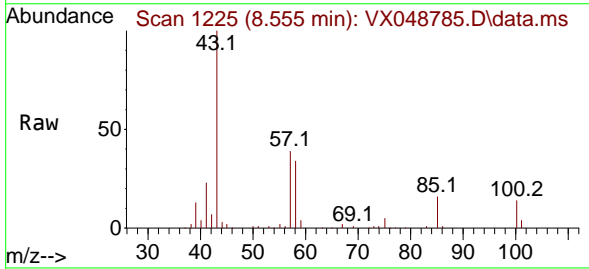


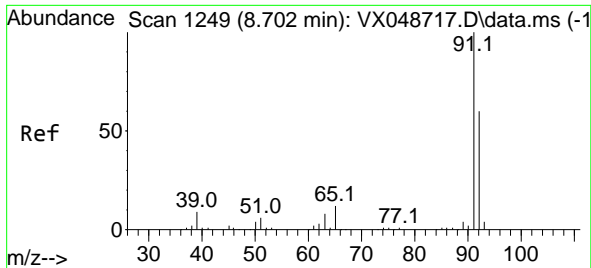
Tgt Ion: 98 Resp: 343915
 Ion Ratio Lower Upper
 98 100
 100 65.8 53.4 80.0



#51
 4-Methyl-2-Pentanone
 Concen: 26.540 ug/l
 RT: 8.555 min Scan# 1225
 Delta R.T. -0.000 min
 Lab File: VX048785.D
 Acq: 09 Dec 2025 15:29

Tgt Ion: 43 Resp: 86886
 Ion Ratio Lower Upper
 43 100
 58 25.9 32.2 48.4#

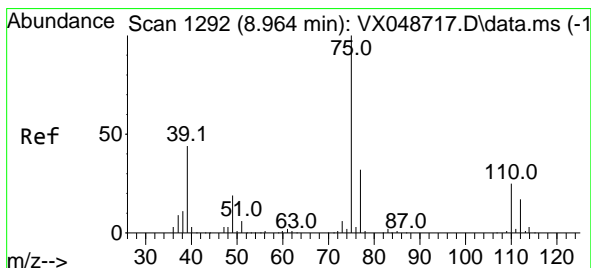
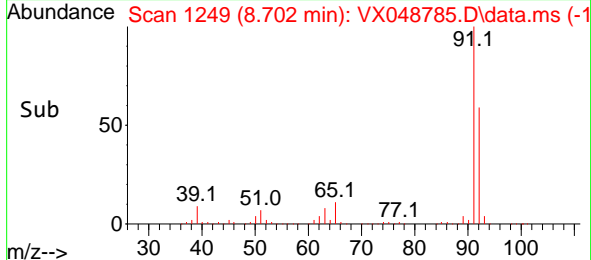
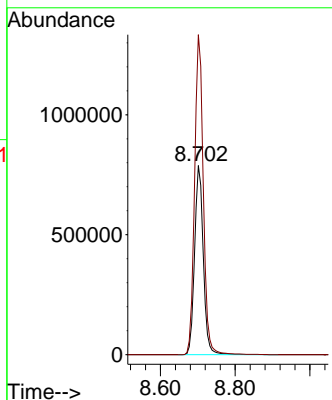
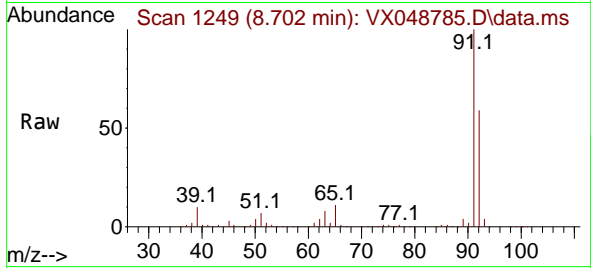




#52
 Toluene
 Concen: 244.238 ug/l
 RT: 8.702 min Scan# 1249
 Delta R.T. -0.000 min
 Lab File: VX048785.D
 Acq: 09 Dec 2025 15:29

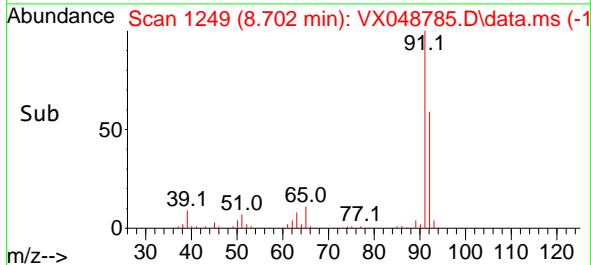
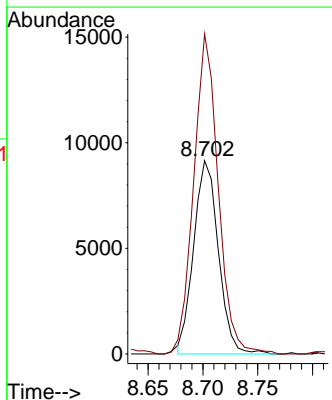
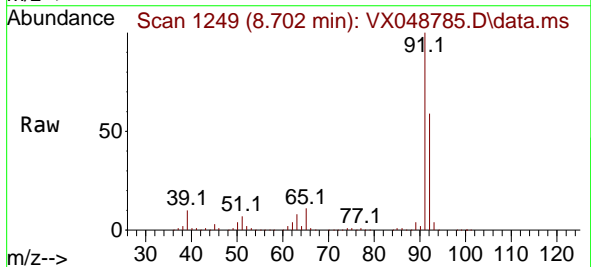
Instrument : MSVOA_X
 ClientSampleId :

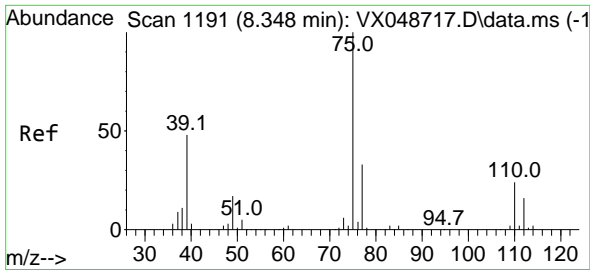
Tgt Ion: 92 Resp: 1272701
 Ion Ratio Lower Upper
 92 100
 91 169.6 136.3 204.5



#53
 t-1,3-Dichloropropene
 Concen: 4.415 ug/l
 RT: 8.702 min Scan# 1249
 Delta R.T. -0.262 min
 Lab File: VX048785.D
 Acq: 09 Dec 2025 15:29

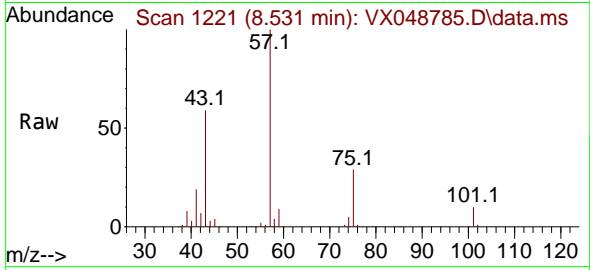
Tgt Ion: 75 Resp: 14342
 Ion Ratio Lower Upper
 75 100
 77 165.6 25.3 37.9#





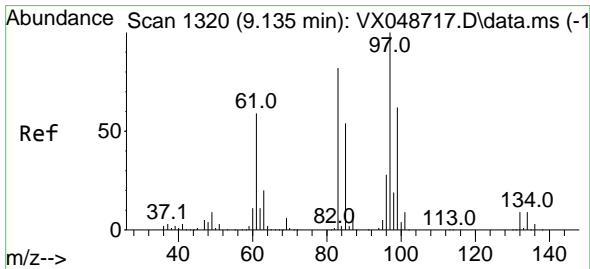
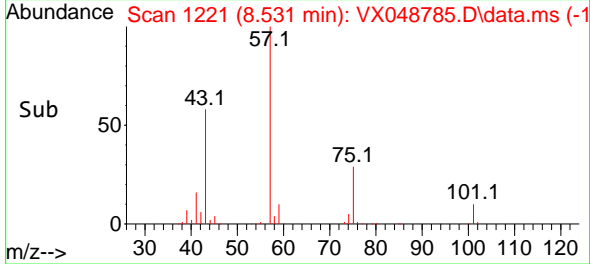
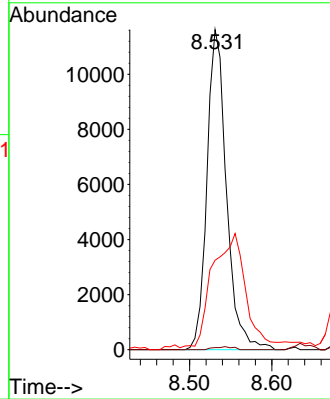
#54
 cis-1,3-Dichloropropene
 Concen: 5.479 ug/l
 RT: 8.531 min Scan# 1191
 Delta R.T. 0.183 min
 Lab File: VX048785.D
 Acq: 09 Dec 2025 15:29

Instrument : MSVOA_X
 ClientSampleId :



Tgt Ion: 75 Resp: 19131

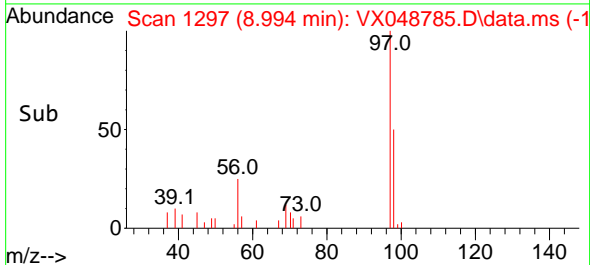
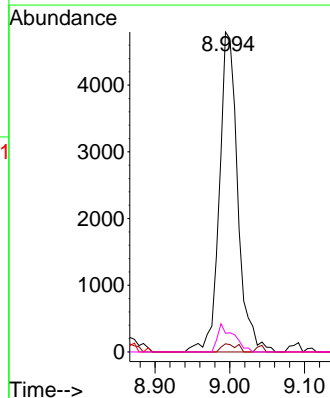
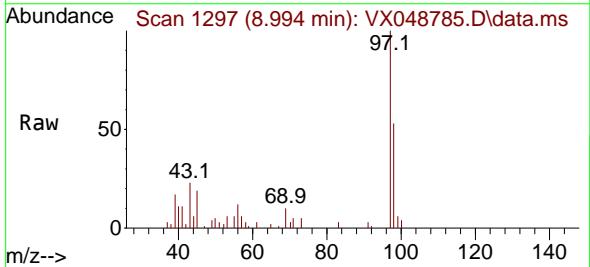
Ion	Ratio	Lower	Upper
75	100		
77	0.7	26.1	39.1#
39	27.4	38.2	57.4#

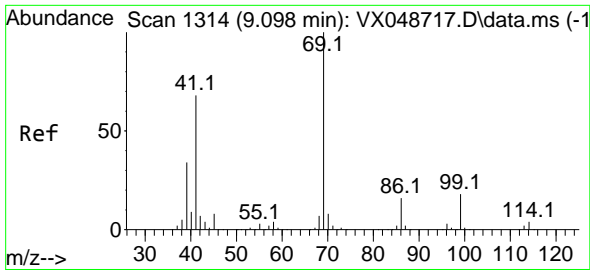


#55
 1,1,2-Trichloroethane
 Concen: 3.914 ug/l
 RT: 8.994 min Scan# 1297
 Delta R.T. -0.140 min
 Lab File: VX048785.D
 Acq: 09 Dec 2025 15:29

Tgt Ion: 97 Resp: 8206

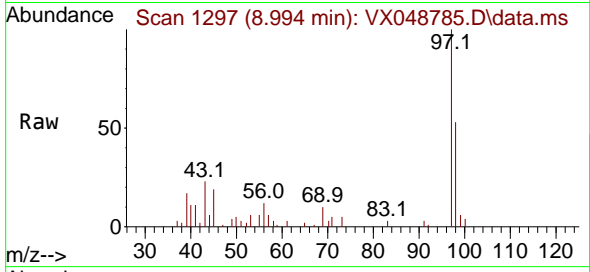
Ion	Ratio	Lower	Upper
97	100		
83	2.5	66.0	99.0#
85	0.0	43.2	64.8#
99	5.8	50.0	75.0#



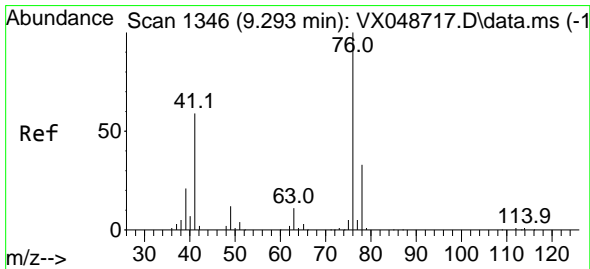
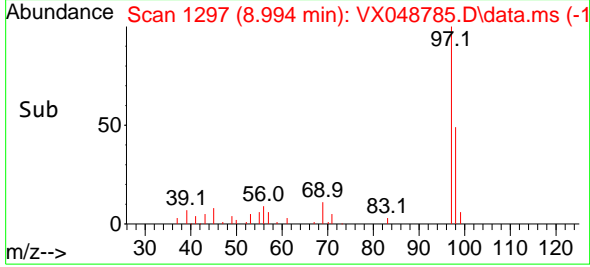
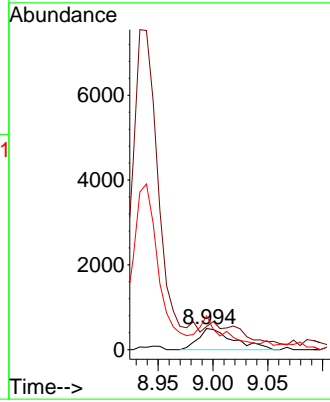


#56
 Ethyl methacrylate
 Concen: 0.339 ug/l
 RT: 8.994 min Scan# 1112
 Delta R.T. -0.104 min
 Lab File: VX048785.D
 Acq: 09 Dec 2025 15:29

Instrument : MSVOA_X
 ClientSampleId :

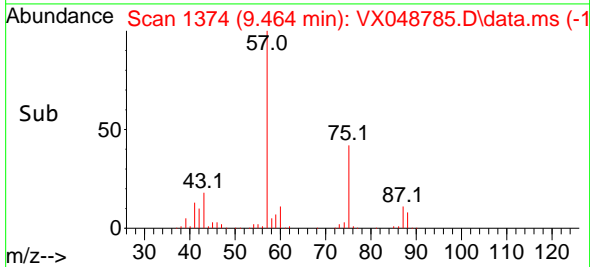
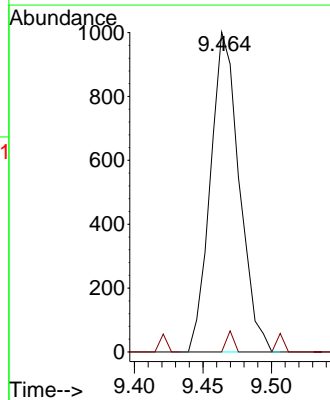
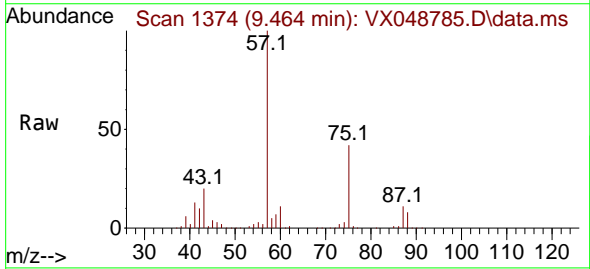


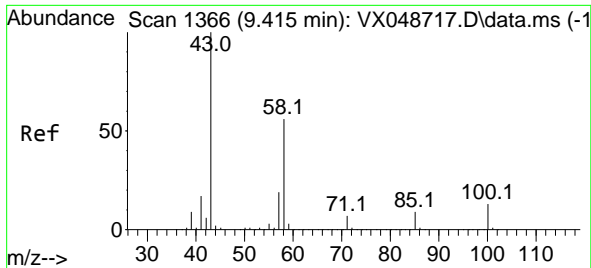
Tgt Ion: 69 Resp: 1112
 Ion Ratio Lower Upper
 69 100
 41 0.0 53.4 80.2#
 39 78.3 27.5 41.3#



#57
 1,3-Dichloropropane
 Concen: 0.421 ug/l
 RT: 9.464 min Scan# 1374
 Delta R.T. 0.171 min
 Lab File: VX048785.D
 Acq: 09 Dec 2025 15:29

Tgt Ion: 76 Resp: 1469
 Ion Ratio Lower Upper
 76 100
 78 1.6 26.0 39.0#

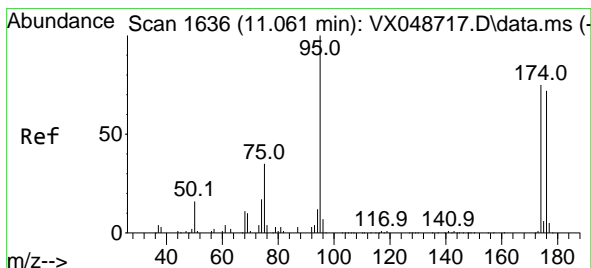
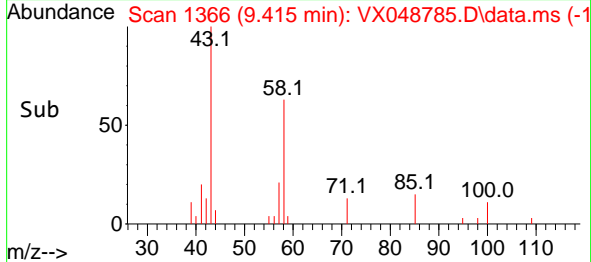
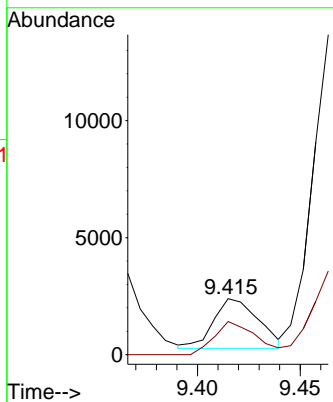
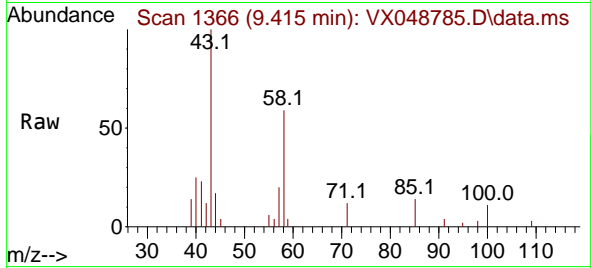




#59
 2-Hexanone
 Concen: 1.392 ug/l
 RT: 9.415 min Scan# 1366
 Delta R.T. -0.000 min
 Lab File: VX048785.D
 Acq: 09 Dec 2025 15:29

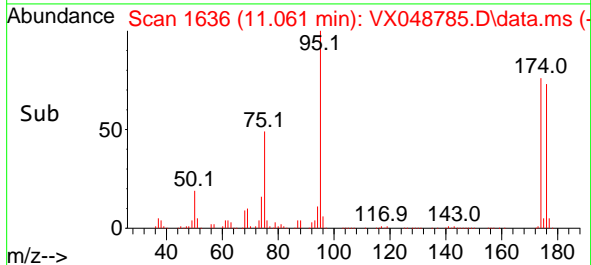
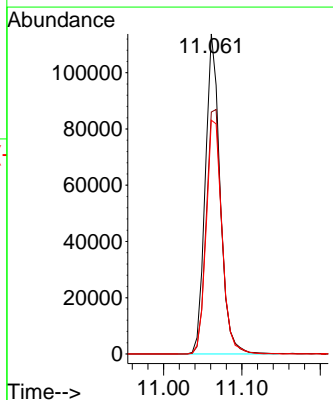
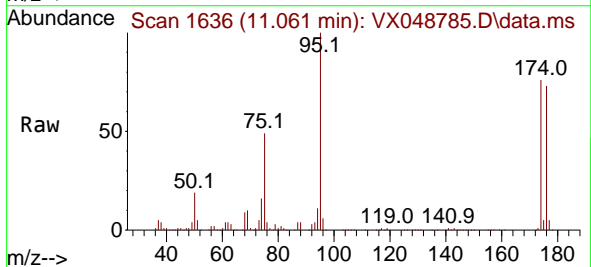
Instrument : MSVOA_X
 ClientSampleId :

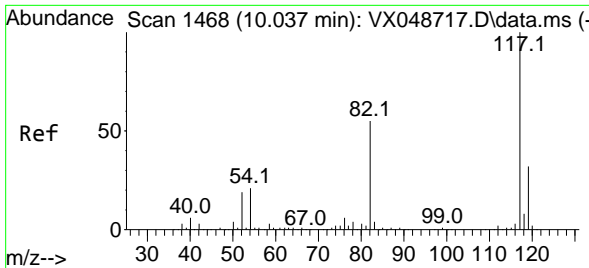
Tgt Ion: 43 Resp: 3199
 Ion Ratio Lower Upper
 43 100
 58 62.1 27.8 83.4



#62
 4-Bromofluorobenzene
 Concen: 57.871 ug/l
 RT: 11.061 min Scan# 1636
 Delta R.T. -0.000 min
 Lab File: VX048785.D
 Acq: 09 Dec 2025 15:29

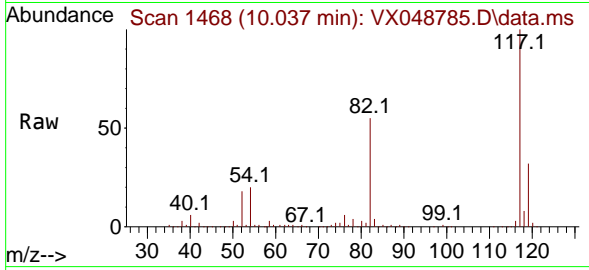
Tgt Ion: 95 Resp: 148877
 Ion Ratio Lower Upper
 95 100
 174 81.3 0.0 157.8
 176 78.1 0.0 154.0





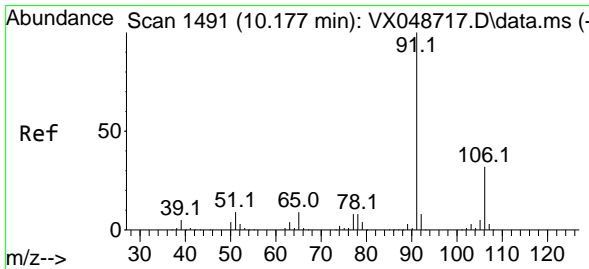
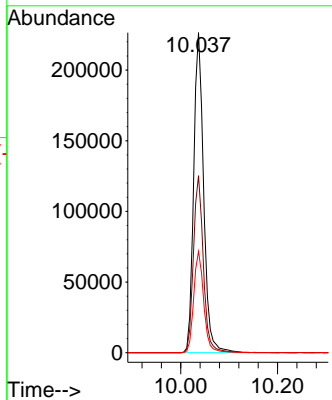
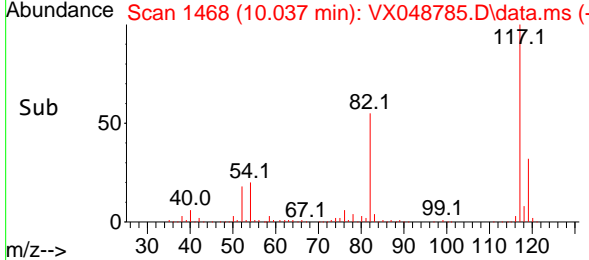
#63
 Chlorobenzene-d5
 Concen: 50.000 ug/l
 RT: 10.037 min Scan# 14
 Delta R.T. -0.000 min
 Lab File: VX048785.D
 Acq: 09 Dec 2025 15:29

Instrument :
 MSVOA_X
 ClientSampleId :

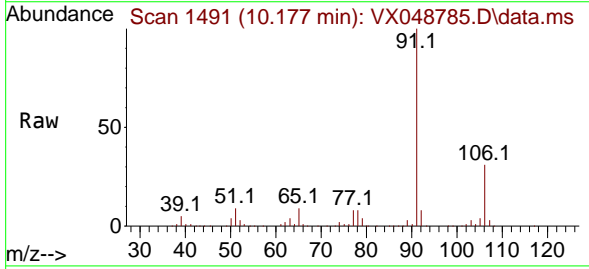


Tgt Ion:117 Resp: 323314

Ion	Ratio	Lower	Upper
117	100		
82	55.3	44.1	66.1
119	31.7	25.2	37.8

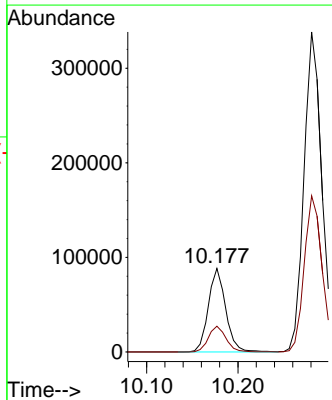
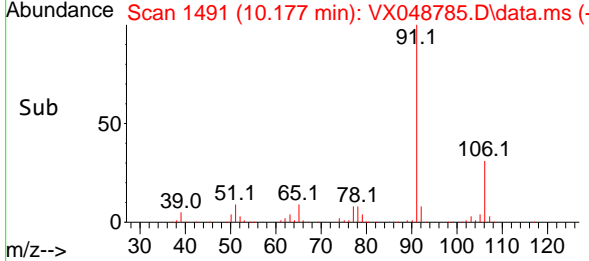


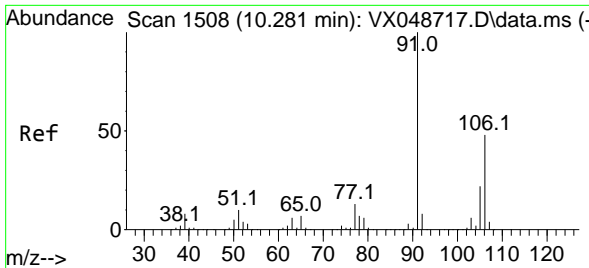
#67
 Ethyl Benzene
 Concen: 10.082 ug/l
 RT: 10.177 min Scan# 1491
 Delta R.T. -0.000 min
 Lab File: VX048785.D
 Acq: 09 Dec 2025 15:29



Tgt Ion: 91 Resp: 116427

Ion	Ratio	Lower	Upper
91	100		
106	30.8	25.3	37.9

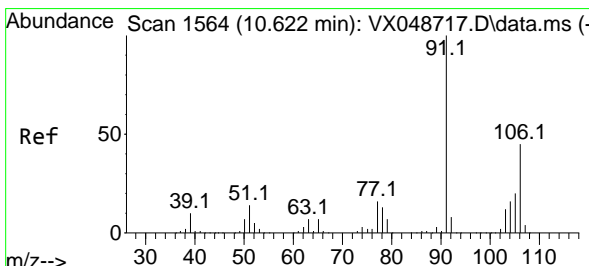
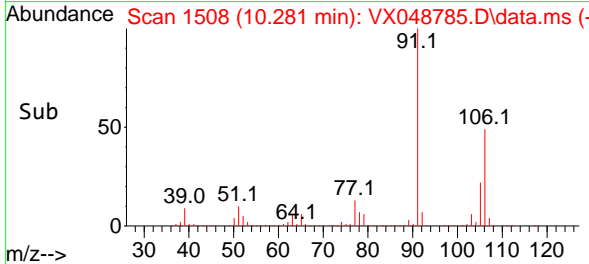
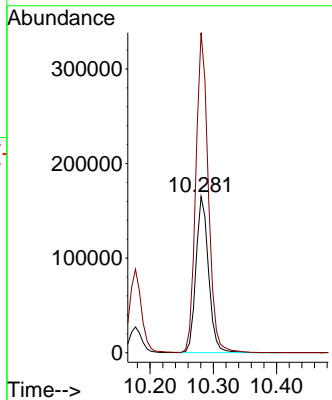
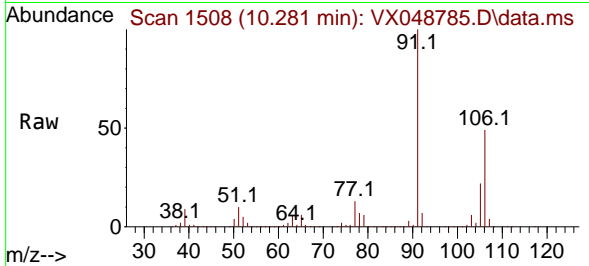




#68
 m/p-Xylenes
 Concen: 50.909 ug/l
 RT: 10.281 min Scan# 11
 Delta R.T. -0.000 min
 Lab File: VX048785.D
 Acq: 09 Dec 2025 15:29

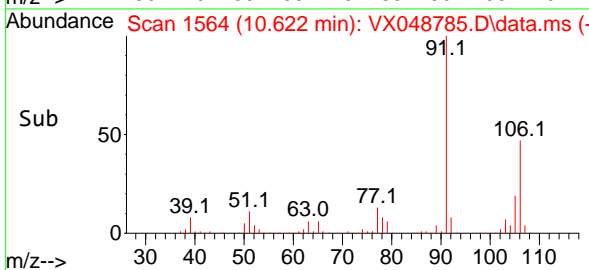
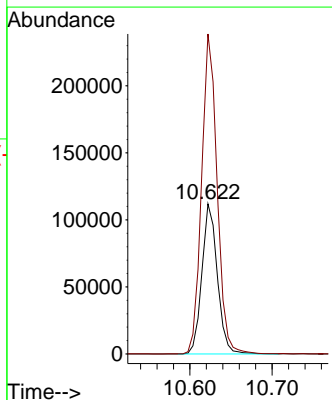
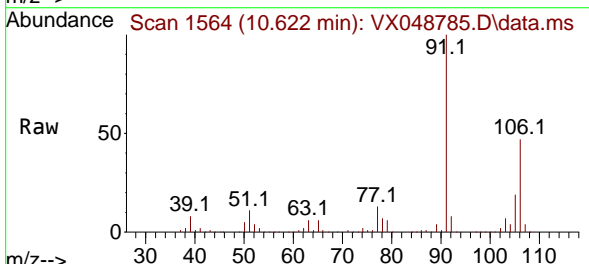
Instrument :
 MSVOA_X
 ClientSampleId :

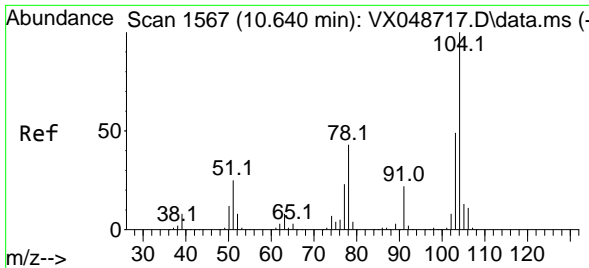
Tgt Ion:106 Resp: 229008
 Ion Ratio Lower Upper
 106 100
 91 202.8 164.2 246.4



#69
 o-Xylene
 Concen: 34.585 ug/l
 RT: 10.622 min Scan# 1564
 Delta R.T. -0.000 min
 Lab File: VX048785.D
 Acq: 09 Dec 2025 15:29

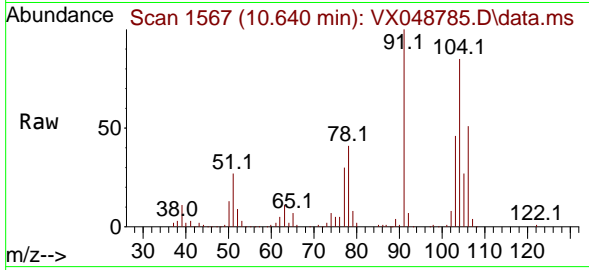
Tgt Ion:106 Resp: 145785
 Ion Ratio Lower Upper
 106 100
 91 214.8 108.1 324.3



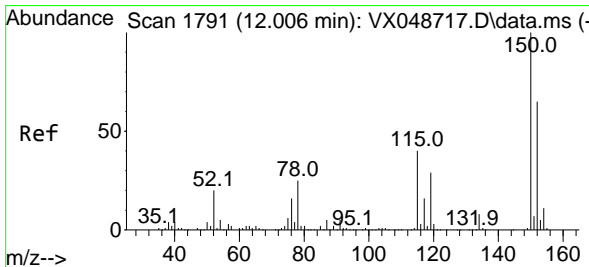
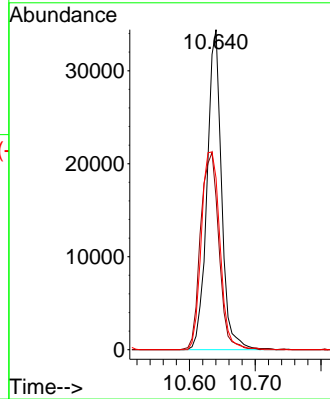
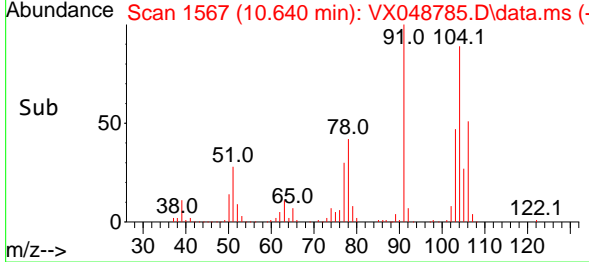


#70
 Styrene
 Concen: 7.295 ug/l
 RT: 10.640 min Scan# 11
 Delta R.T. -0.000 min
 Lab File: VX048785.D
 Acq: 09 Dec 2025 15:29

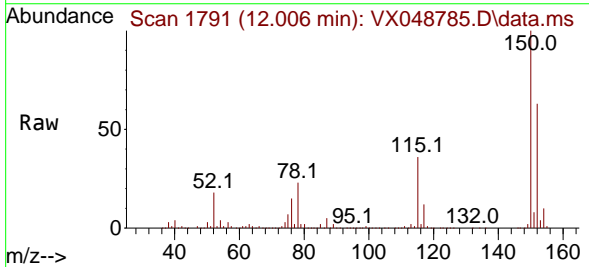
Instrument : MSVOA_X
 ClientSampleId :



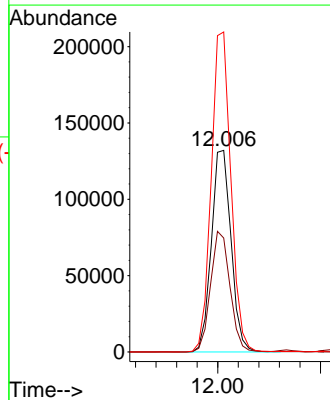
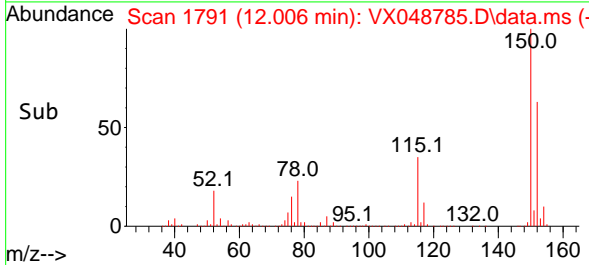
Tgt Ion:104 Resp: 52786
 Ion Ratio Lower Upper
 104 100
 78 77.4 40.6 60.8#
 103 79.0 43.4 65.2#

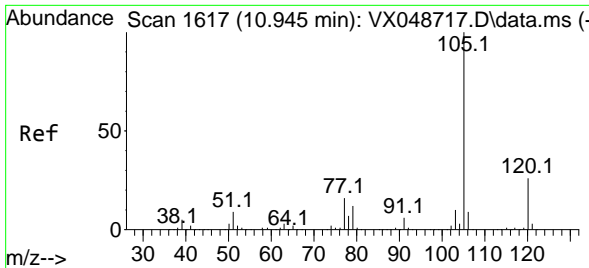


#72
 1,4-Dichlorobenzene-d4
 Concen: 50.000 ug/l
 RT: 12.006 min Scan# 1791
 Delta R.T. -0.000 min
 Lab File: VX048785.D
 Acq: 09 Dec 2025 15:29



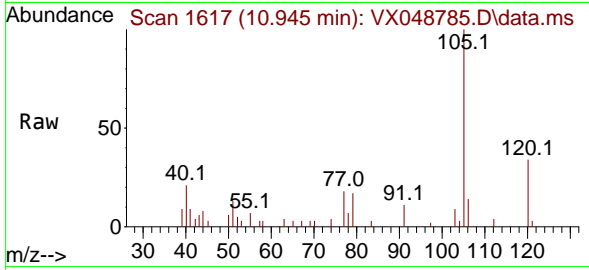
Tgt Ion:152 Resp: 175708
 Ion Ratio Lower Upper
 152 100
 115 58.9 42.1 126.4
 150 157.9 0.0 347.8



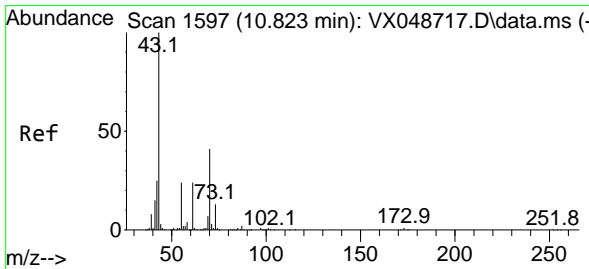
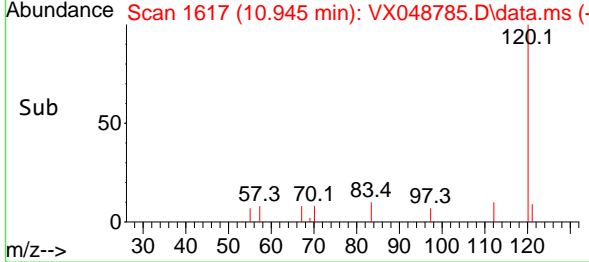
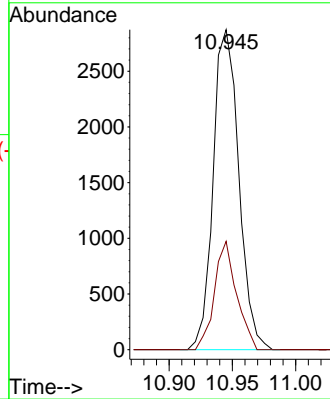


#73
 Isopropylbenzene
 Concen: 0.342 ug/l
 RT: 10.945 min Scan# 1617
 Delta R.T. -0.000 min
 Lab File: VX048785.D
 Acq: 09 Dec 2025 15:29

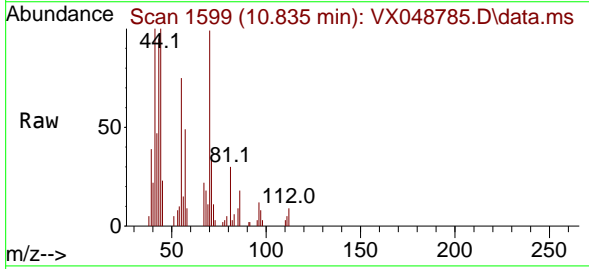
Instrument : MSVOA_X
 ClientSampleId :



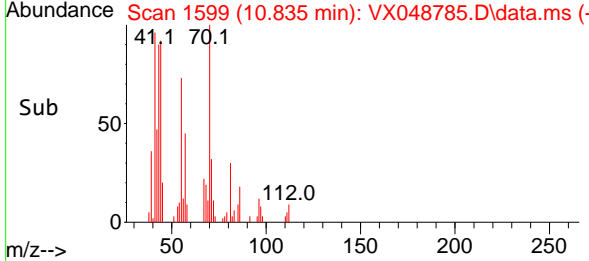
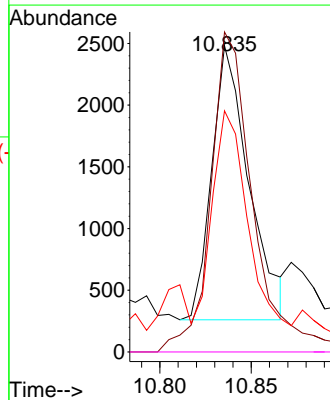
Tgt Ion:105 Resp: 4046
 Ion Ratio Lower Upper
 105 100
 120 29.3 13.2 39.5

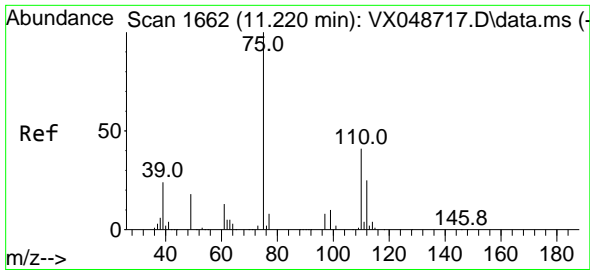


#74
 N-ethyl acetate
 Concen: 0.611 ug/l
 RT: 10.835 min Scan# 1599
 Delta R.T. 0.012 min
 Lab File: VX048785.D
 Acq: 09 Dec 2025 15:29



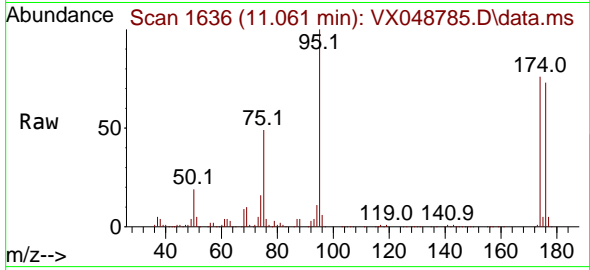
Tgt Ion: 43 Resp: 3142
 Ion Ratio Lower Upper
 43 100
 70 134.8 33.9 50.9#
 55 71.9 19.1 28.7#
 61 0.0 19.0 28.6#



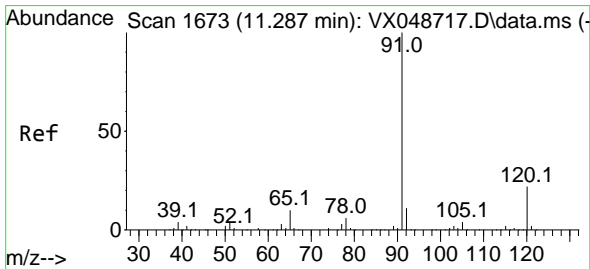
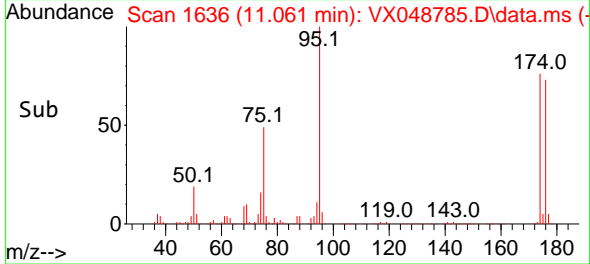
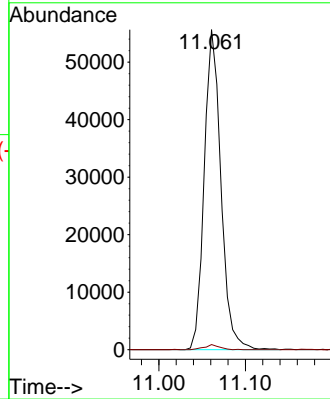


#76
 1,2,3-Trichloropropane
 Concen: 22.773 ug/l
 RT: 11.061 min Scan# 1636
 Delta R.T. -0.159 min
 Lab File: VX048785.D
 Acq: 09 Dec 2025 15:29

Instrument : MSVOA_X
 ClientSampleId :

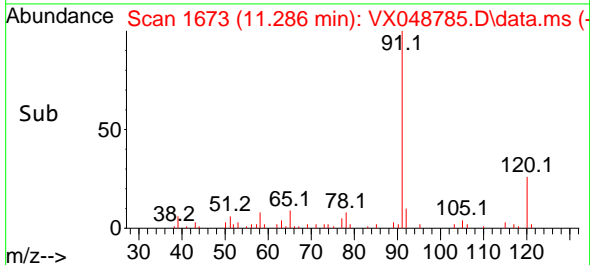
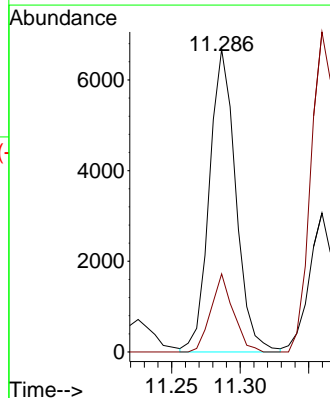
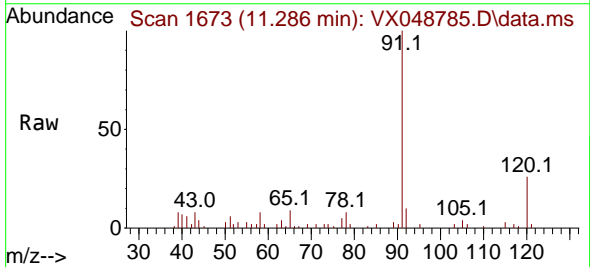


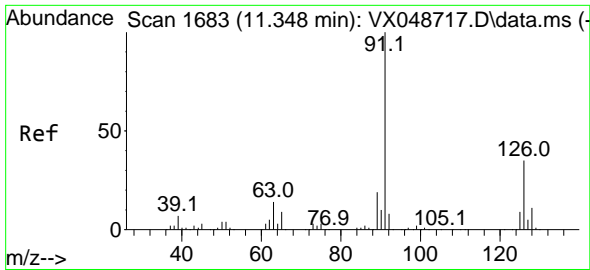
Tgt Ion: 75 Resp: 74527
 Ion Ratio Lower Upper
 75 100
 77 1.4 24.3 73.0#



#78
 n-propylbenzene
 Concen: 0.653 ug/l
 RT: 11.286 min Scan# 1673
 Delta R.T. -0.000 min
 Lab File: VX048785.D
 Acq: 09 Dec 2025 15:29

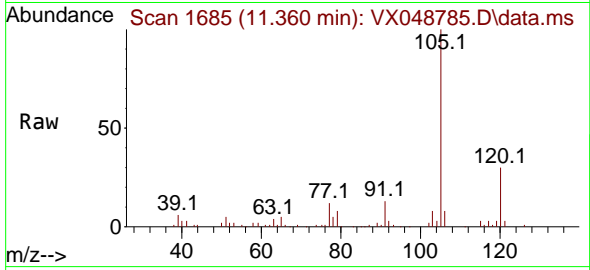
Tgt Ion: 91 Resp: 8954
 Ion Ratio Lower Upper
 91 100
 120 21.7 11.4 34.2



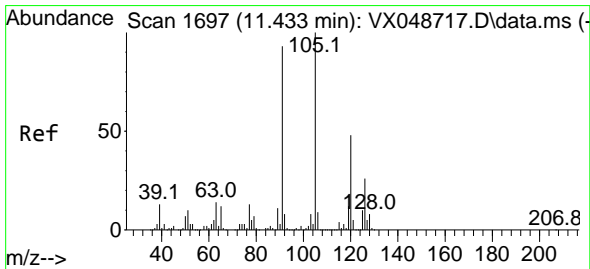
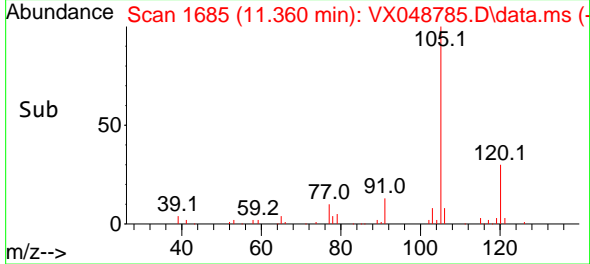
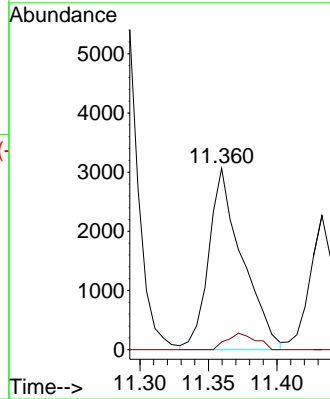


#79
 2-Chlorotoluene
 Concen: 0.623 ug/l
 RT: 11.360 min Scan# 1685
 Delta R.T. 0.012 min
 Lab File: VX048785.D
 Acq: 09 Dec 2025 15:29

Instrument : MSVOA_X
 ClientSampleId :

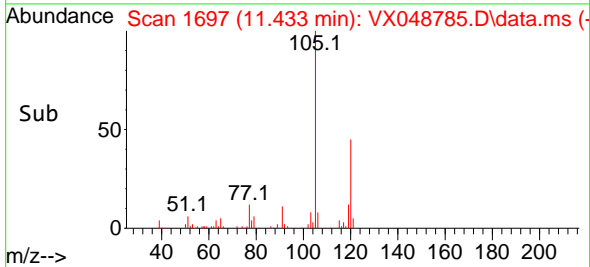
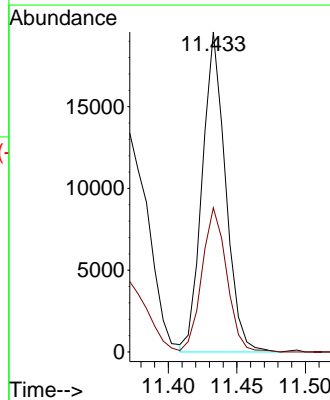
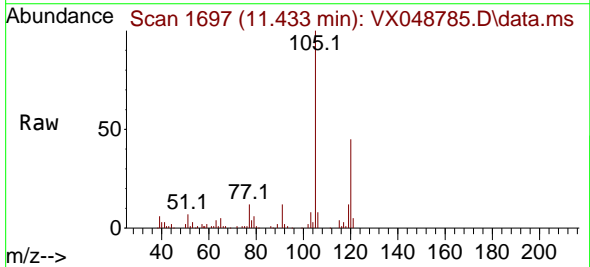


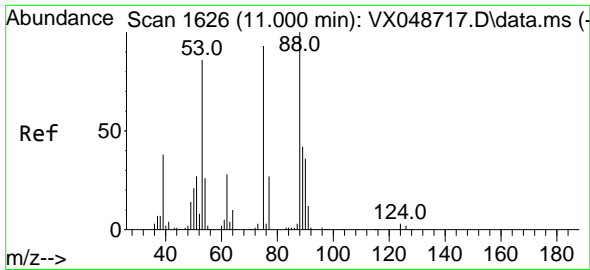
Tgt Ion: 91 Resp: 5211
 Ion Ratio Lower Upper
 91 100
 126 7.9 16.8 50.3#



#80
 1,3,5-Trimethylbenzene
 Concen: 2.379 ug/l
 RT: 11.433 min Scan# 1697
 Delta R.T. -0.000 min
 Lab File: VX048785.D
 Acq: 09 Dec 2025 15:29

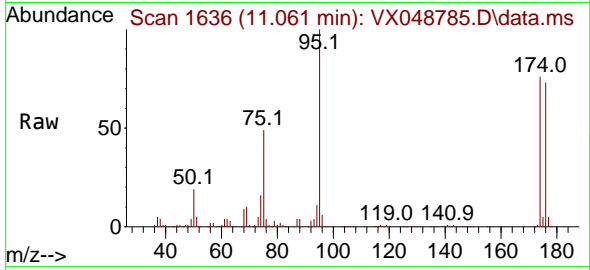
Tgt Ion: 105 Resp: 23157
 Ion Ratio Lower Upper
 105 100
 120 48.0 24.4 73.2



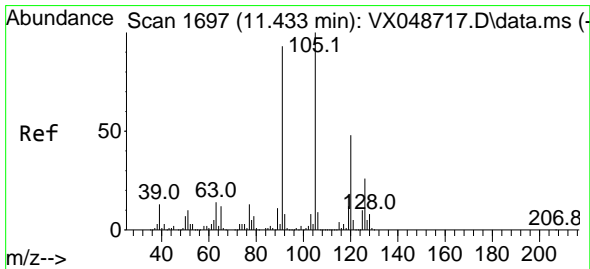
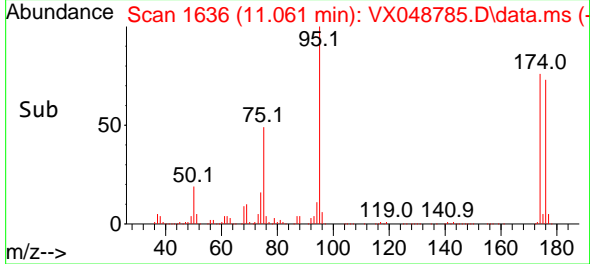
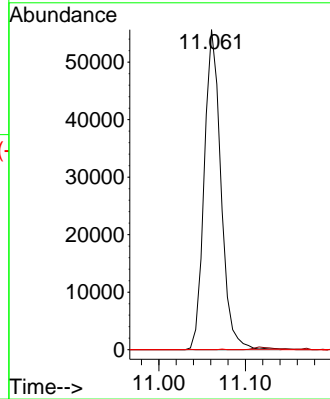


#81
 trans-1,4-Dichloro-2-butene
 Concen: 54.095 ug/l
 RT: 11.061 min Scan# 1636
 Delta R.T. 0.061 min
 Lab File: VX048785.D
 Acq: 09 Dec 2025 15:29

Instrument : MSVOA_X
 ClientSampleId :

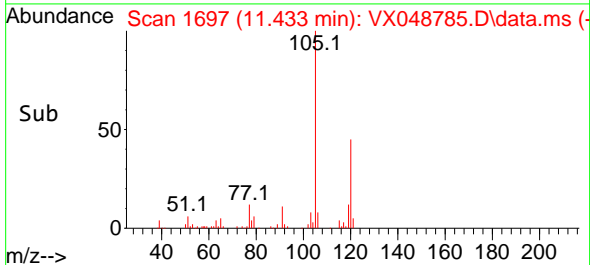
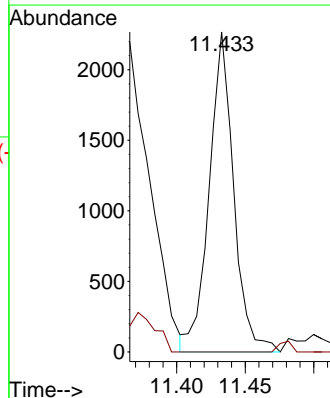
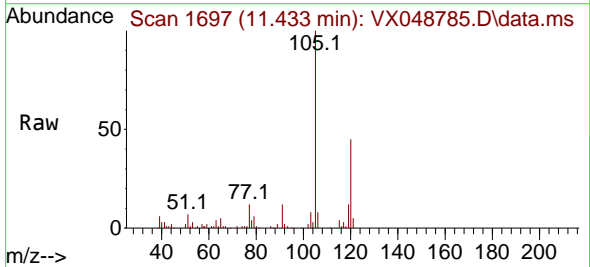


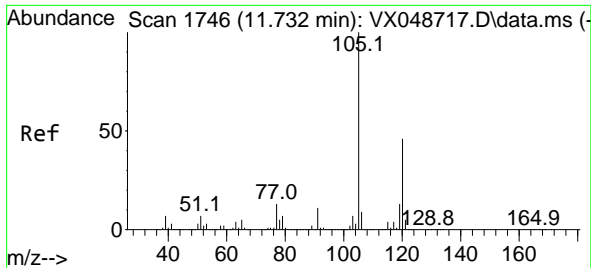
Tgt Ion: 75 Resp: 74527
 Ion Ratio Lower Upper
 75 100
 53 0.0 79.9 119.9#
 89 0.1 67.1 100.7#



#82
 4-Chlorotoluene
 Concen: 0.288 ug/l
 RT: 11.433 min Scan# 1697
 Delta R.T. -0.000 min
 Lab File: VX048785.D
 Acq: 09 Dec 2025 15:29

Tgt Ion: 91 Resp: 2806
 Ion Ratio Lower Upper
 91 100
 126 0.0 14.7 44.1#

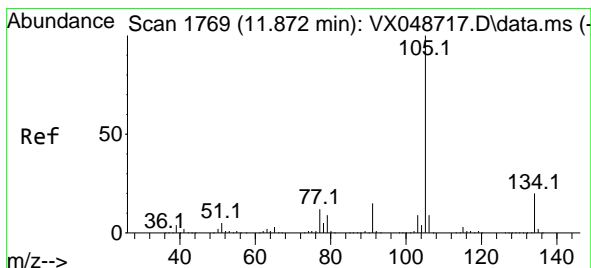
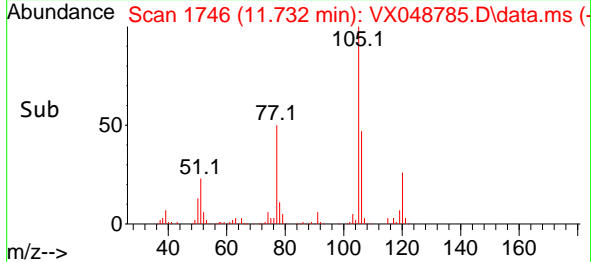
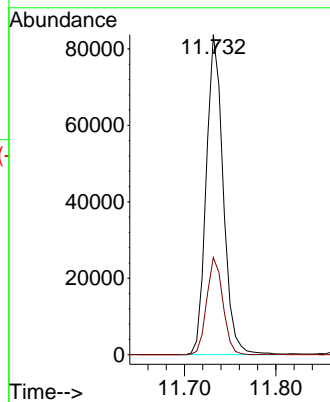
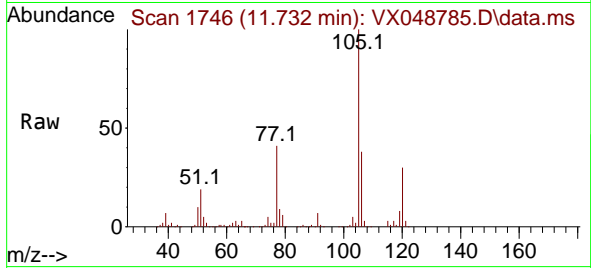




#84
 1,2,4-Trimethylbenzene
 Concen: 10.965 ug/l
 RT: 11.732 min Scan# 1746
 Delta R.T. -0.000 min
 Lab File: VX048785.D
 Acq: 09 Dec 2025 15:29

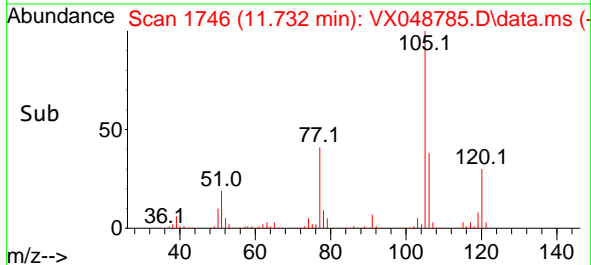
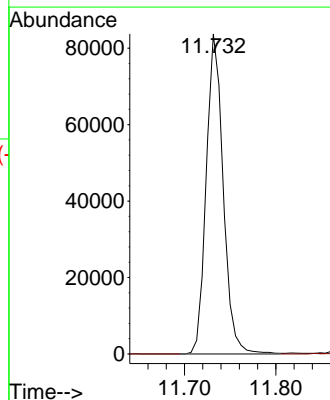
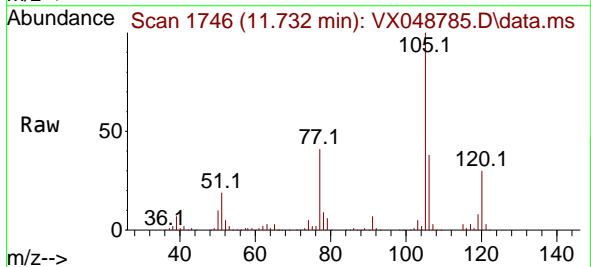
Instrument : MSVOA_X
 ClientSampleId :

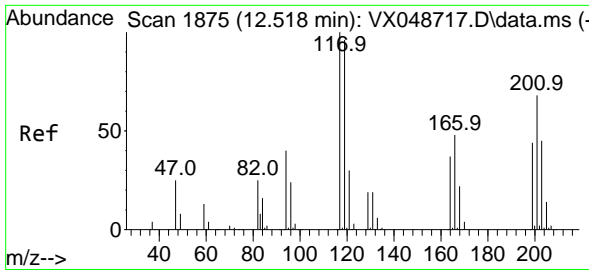
Tgt Ion:105 Resp: 107648
 Ion Ratio Lower Upper
 105 100
 120 28.9 22.3 66.8



#85
 sec-Butylbenzene
 Concen: 8.783 ug/l
 RT: 11.732 min Scan# 1746
 Delta R.T. -0.140 min
 Lab File: VX048785.D
 Acq: 09 Dec 2025 15:29

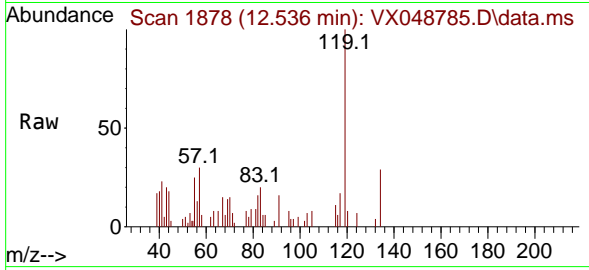
Tgt Ion:105 Resp: 107648
 Ion Ratio Lower Upper
 105 100
 134 0.0 9.8 29.5#



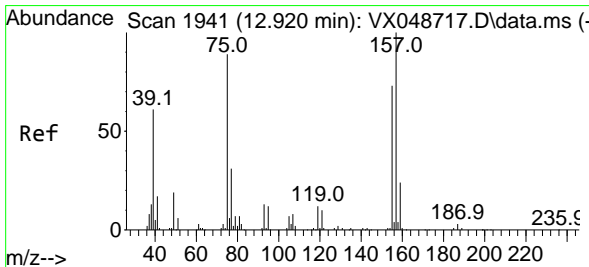
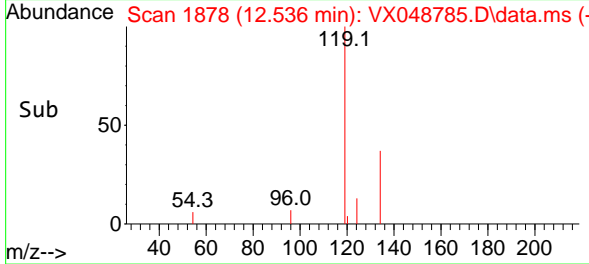
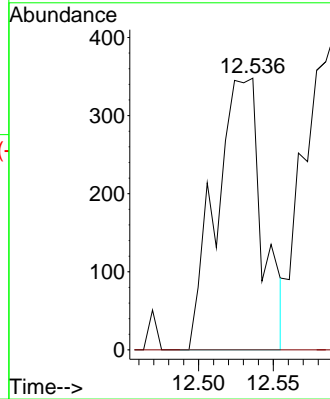


#90
 Hexachloroethane
 Concen: 0.349 ug/l
 RT: 12.536 min Scan# 117
 Delta R.T. 0.018 min
 Lab File: VX048785.D
 Acq: 09 Dec 2025 15:29

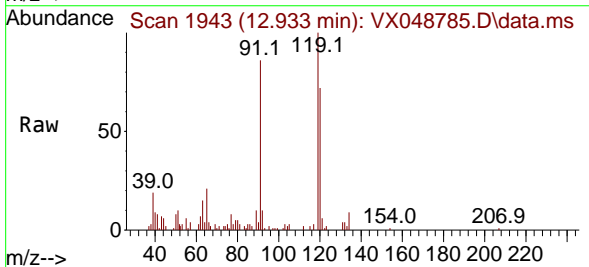
Instrument : MSVOA_X
 ClientSampleId :



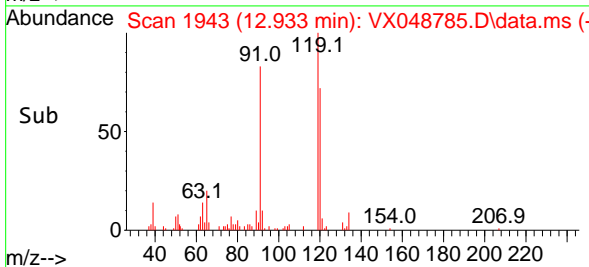
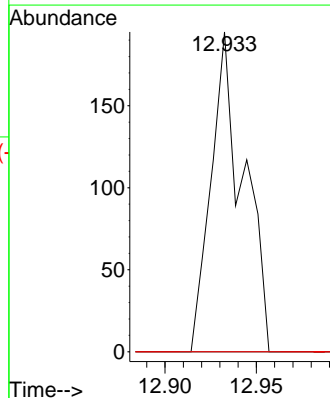
Tgt Ion: 117 Resp: 747
 Ion Ratio Lower Upper
 117 100
 201 0.0 36.4 109.1#

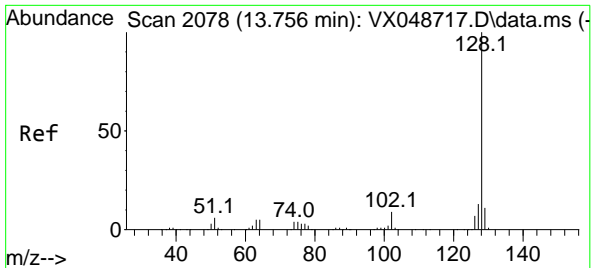


#92
 1,2-Dibromo-3-Chloropropane
 Concen: 0.248 ug/l
 RT: 12.933 min Scan# 1943
 Delta R.T. 0.012 min
 Lab File: VX048785.D
 Acq: 09 Dec 2025 15:29



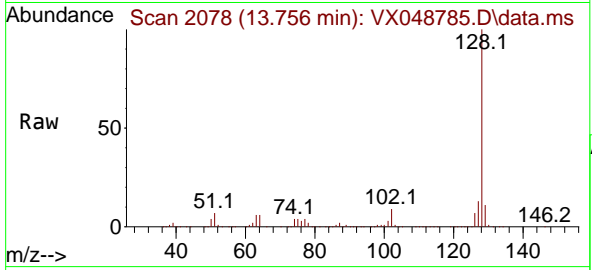
Tgt Ion: 75 Resp: 241
 Ion Ratio Lower Upper
 75 100
 155 0.0 43.0 129.2#
 157 0.0 56.0 168.2#





#95
 Naphthalene
 Concen: 68.853 ug/l
 RT: 13.756 min Scan# 20
 Delta R.T. -0.000 min
 Lab File: VX048785.D
 Acq: 09 Dec 2025 15:29

Instrument :
 MSVOA_X
 ClientSampleId :



Tgt Ion:128 Resp: 780154

Ion	Ratio	Lower	Upper
128	100		
127	12.9	10.2	15.2
129	11.0	8.6	13.0

