

Data Path : Z:\voasrv\HPCHEM1\MSVOA_X\Data\VX120925\
 Data File : VX048787.D
 Acq On : 09 Dec 2025 16:09
 Operator : JC/MD
 Sample : Q3803-11
 Misc : 5.0mL/MSVOA_X/WATER
 ALS Vial : 21 Sample Multiplier: 1

Instrument :
 MSVOA_X
 ClientSampleId :
 CHASE-K

Quant Time: Dec 10 00:26:48 2025
 Quant Method : Z:\voasrv\HPCHEM1\MSVOA_X\Method\82X120425W.M
 Quant Title : SW846 8260
 QLast Update : Fri Dec 05 03:27:34 2025
 Response via : Initial Calibration

Compound	R.T.	QIon	Response	Conc	Units	Dev(Min)
Internal Standards						
1) Pentafluorobenzene	5.537	168	163453	50.000	ug/l	0.00
34) 1,4-Difluorobenzene	6.745	114	336114	50.000	ug/l	0.00
63) Chlorobenzene-d5	10.037	117	341281	50.000	ug/l	0.00
72) 1,4-Dichlorobenzene-d4	12.006	152	185952	50.000	ug/l	0.00
System Monitoring Compounds						
33) 1,2-Dichloroethane-d4	5.940	65	115080	52.456	ug/l	0.00
Spiked Amount	50.000	Range 78 - 117	Recovery	=	104.920%	
35) Dibromofluoromethane	5.373	113	102080	44.109	ug/l	0.00
Spiked Amount	50.000	Range 75 - 124	Recovery	=	88.220%	
50) Toluene-d8	8.634	98	343022	42.284	ug/l	0.00
Spiked Amount	50.000	Range 92 - 112	Recovery	=	84.560%#	
62) 4-Bromofluorobenzene	11.061	95	158542	56.676	ug/l	0.00
Spiked Amount	50.000	Range 83 - 123	Recovery	=	113.360%	
Target Compounds						
						Qvalue
11) Tert butyl alcohol	2.934	59	3392	9.577	ug/l #	94
13) Acrolein	2.239	56	866	42.303	ug/l #	50
16) Acetone	2.373	43	94199	112.162	ug/l	98
18) Methyl Acetate	2.703	43	7151	3.026	ug/l	96
20) Methylene Chloride	2.794	84	136891	65.211	ug/l	97
25) 2-Butanone	4.550	43	26306	21.223	ug/l	97
29) Tetrahydrofuran	5.025	42	602	0.636	ug/l #	62
36) 1,1-Dichloropropene	5.537	75	12240	3.862	ug/l #	49
37) Ethyl Acetate	4.550	43	26306	6.945	ug/l #	71
38) Carbon Tetrachloride	5.544	117	15985	4.452	ug/l #	11
40) Benzene	6.025	78	496793	52.870	ug/l	99
42) 1,2-Dichloroethane	6.025	62	4046	1.217	ug/l #	73
43) Isopropyl Acetate	6.330	43	18648	3.252	ug/l #	89
48) Methyl methacrylate	7.781	41	58516	20.283	ug/l #	40
49) 1,4-Dioxane	7.781	88	55	1.386	ug/l #	1
51) 4-Methyl-2-Pentanone	8.561	43	3955939	1111.282	ug/l	99
52) Toluene	8.701	92	232194	40.979	ug/l	98
54) cis-1,3-Dichloropropene	8.537	75	24909	6.561	ug/l #	1
55) 1,1,2-Trichloroethane	9.000	97	1423	0.624	ug/l #	21
57) 1,3-Dichloropropane	9.470	76	2036	0.537	ug/l #	42
59) 2-Hexanone	9.464	43	25773	10.314	ug/l #	50
67) Ethyl Benzene	10.177	91	95154	7.806	ug/l	99
68) m/p-Xylenes	10.280	106	184444	38.844	ug/l	99
69) o-Xylene	10.622	106	238483	53.598	ug/l	98
70) Styrene	10.628	104	22534	2.950	ug/l #	1
73) Isopropylbenzene	10.945	105	5199	0.415	ug/l	98
74) N-amyl acetate	10.847	43	2070	0.380	ug/l #	22
76) 1,2,3-Trichloropropane	11.061	75	78683	22.718	ug/l #	30
80) 1,3,5-Trimethylbenzene	11.433	105	6594	0.640	ug/l	99
81) trans-1,4-Dichloro-2-b...	11.061	75	78683	53.965	ug/l #	3
84) 1,2,4-Trimethylbenzene	11.597	105	4628	0.445	ug/l	78
85) sec-Butylbenzene	11.731	105	154118	11.882	ug/l #	57
92) 1,2-Dibromo-3-Chloropr...	12.786	75	277	0.269	ug/l #	1
95) Naphthalene	13.755	128	249609	24.098	ug/l	99

Data Path : Z:\voasrv\HPCHEM1\MSVOA_X\Data\VX120925\
Data File : VX048787.D
Acq On : 09 Dec 2025 16:09
Operator : JC/MD
Sample : Q3803-11
Misc : 5.0mL/MSVOA_X/WATER
ALS Vial : 21 Sample Multiplier: 1

Instrument :
MSVOA_X
ClientSampleId :
CHASE-K

Quant Time: Dec 10 00:26:48 2025
Quant Method : Z:\voasrv\HPCHEM1\MSVOA_X\Method\82X120425W.M
Quant Title : SW846 8260
QLast Update : Fri Dec 05 03:27:34 2025
Response via : Initial Calibration

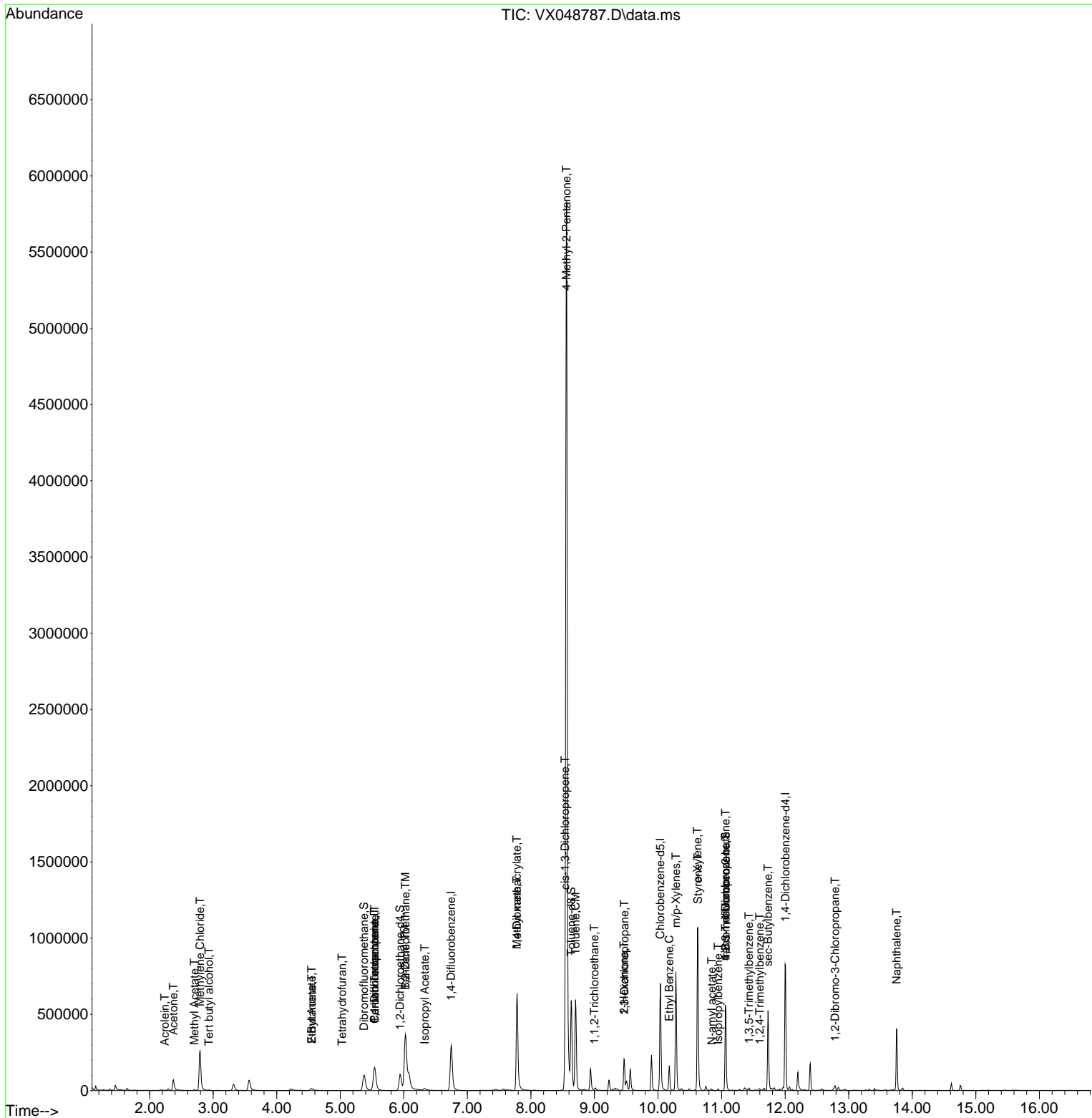
Compound	R.T.	QIon	Response	Conc	Units	Dev(Min)

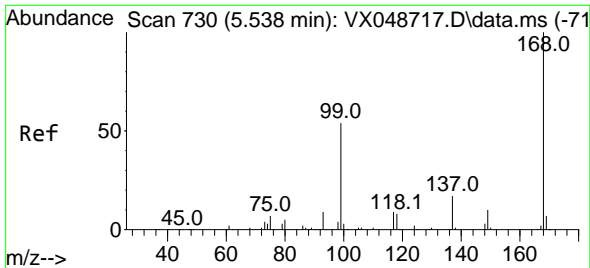
(#) = qualifier out of range (m) = manual integration (+) = signals summed						

Data Path : Z:\voasrv\HPCHEM1\MSVOA_X\Data\VX120925\
 Data File : VX048787.D
 Acq On : 09 Dec 2025 16:09
 Operator : JC/MD
 Sample : Q3803-11
 Misc : 5.0mL/MSVOA_X/WATER
 ALS Vial : 21 Sample Multiplier: 1

Instrument :
 MSVOA_X
 ClientSampleId :
 CHASE-K

Quant Time: Dec 10 00:26:48 2025
 Quant Method : Z:\voasrv\HPCHEM1\MSVOA_X\Method\82X120425W.M
 Quant Title : SW846 8260
 QLast Update : Fri Dec 05 03:27:34 2025
 Response via : Initial Calibration

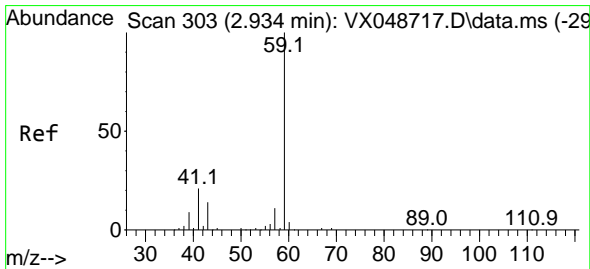
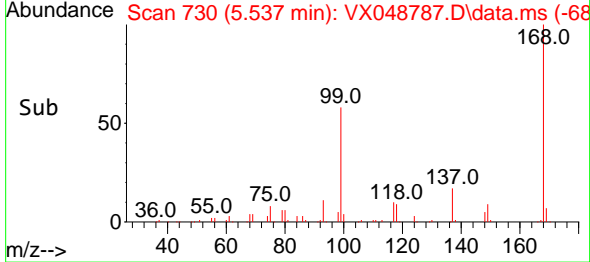
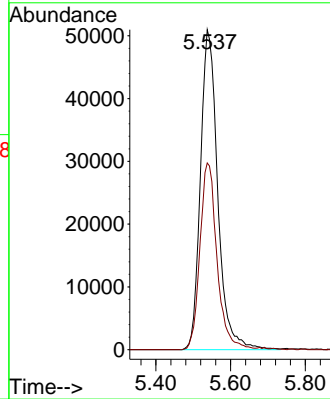
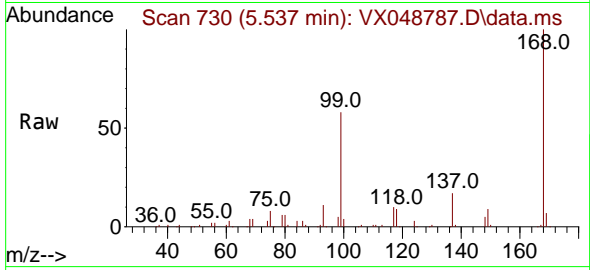




#1
 Pentafluorobenzene
 Concen: 50.000 ug/l
 RT: 5.537 min Scan# 71
 Delta R.T. -0.001 min
 Lab File: VX048787.D
 Acq: 09 Dec 2025 16:09

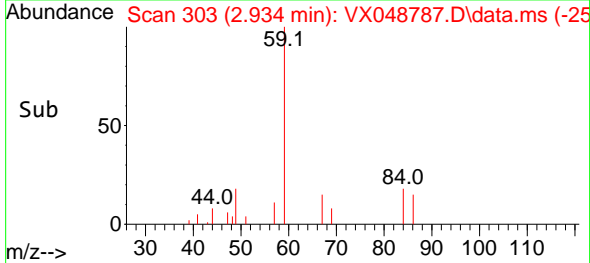
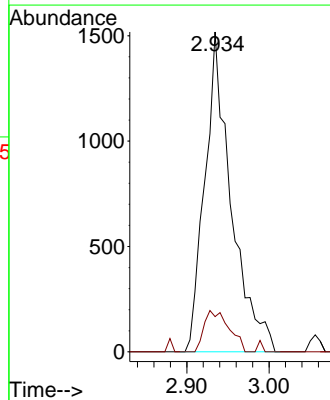
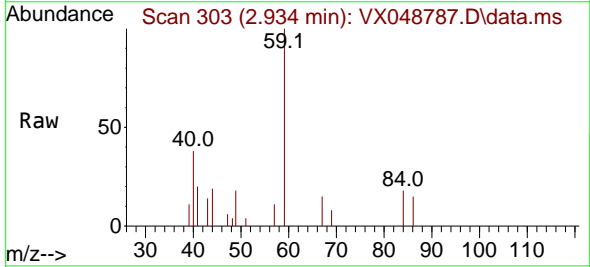
Instrument :
 MSVOA_X
 ClientSampleId :
 CHASE-K

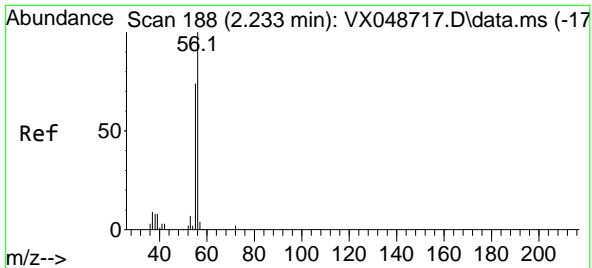
Tgt Ion:168 Resp: 163453
 Ion Ratio Lower Upper
 168 100
 99 58.3 44.2 66.4



#11
 Tert butyl alcohol
 Concen: 9.577 ug/l
 RT: 2.934 min Scan# 303
 Delta R.T. -0.000 min
 Lab File: VX048787.D
 Acq: 09 Dec 2025 16:09

Tgt Ion: 59 Resp: 3392
 Ion Ratio Lower Upper
 59 100
 57 12.2 8.1 12.1#

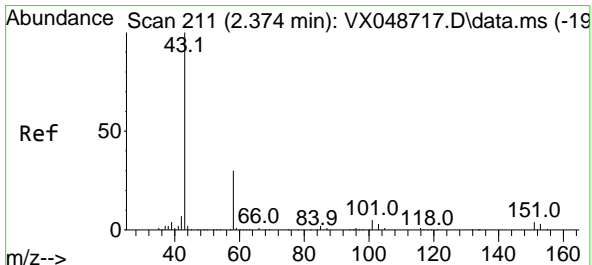
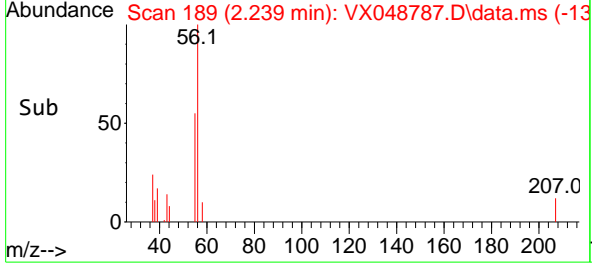
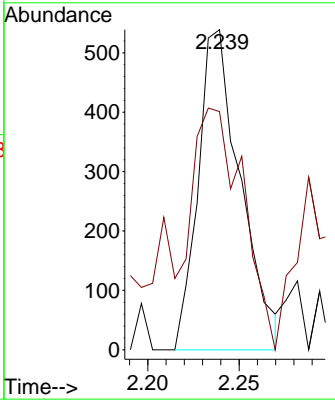
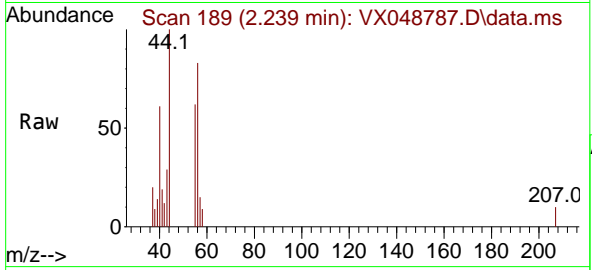




#13
 Acrolein
 Concen: 42.303 ug/l
 RT: 2.239 min Scan# 189
 Delta R.T. 0.006 min
 Lab File: VX048787.D
 Acq: 09 Dec 2025 16:09

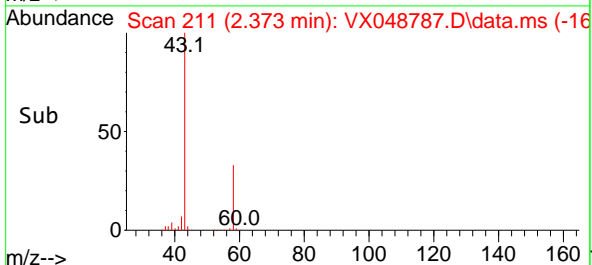
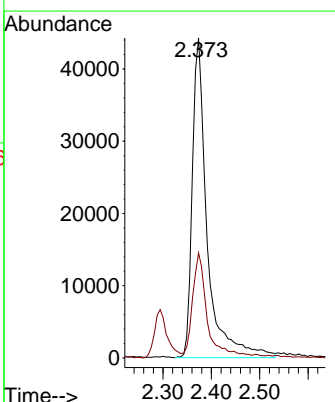
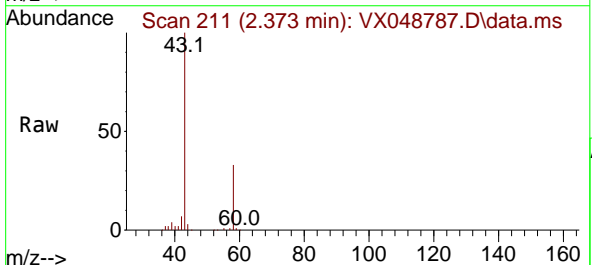
Instrument : MSVOA_X
 ClientSampleId : CHASE-K

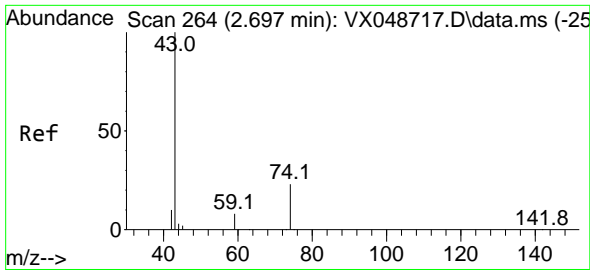
Tgt Ion: 56 Resp: 866
 Ion Ratio Lower Upper
 56 100
 55 110.6 55.8 83.6#



#16
 Acetone
 Concen: 112.162 ug/l
 RT: 2.373 min Scan# 211
 Delta R.T. -0.000 min
 Lab File: VX048787.D
 Acq: 09 Dec 2025 16:09

Tgt Ion: 43 Resp: 94199
 Ion Ratio Lower Upper
 43 100
 58 32.1 25.0 37.4

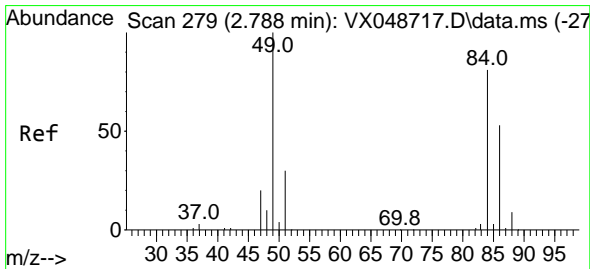
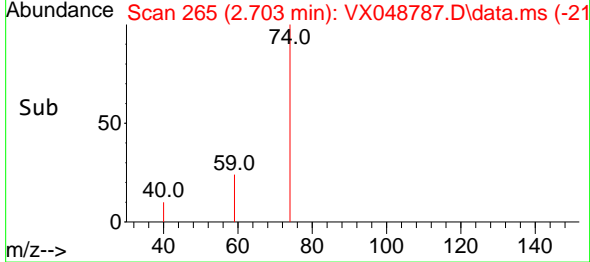
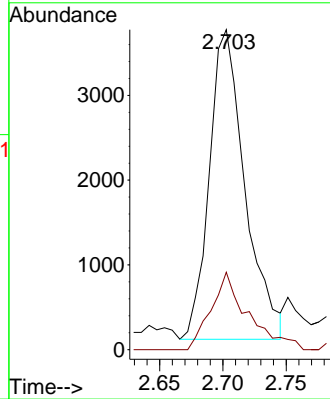
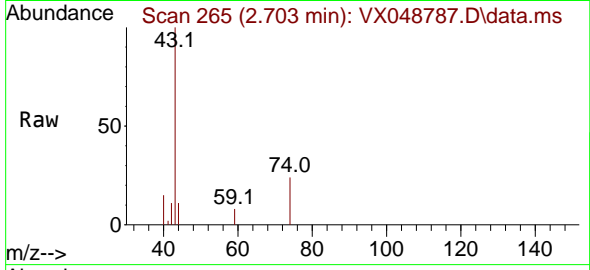




#18
 Methyl Acetate
 Concen: 3.026 ug/l
 RT: 2.703 min Scan# 20
 Delta R.T. 0.006 min
 Lab File: VX048787.D
 Acq: 09 Dec 2025 16:09

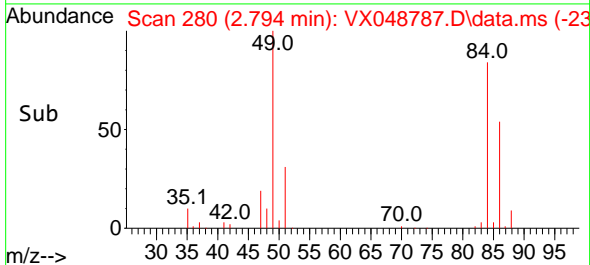
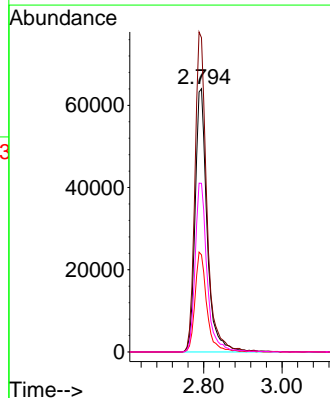
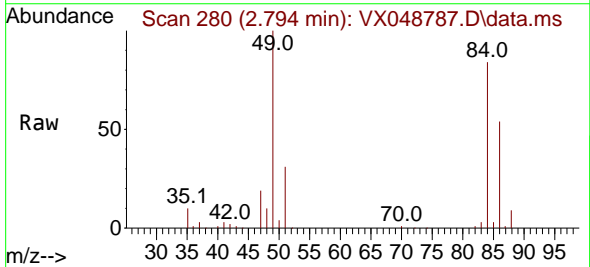
Instrument :
 MSVOA_X
 ClientSampleId :
 CHASE-K

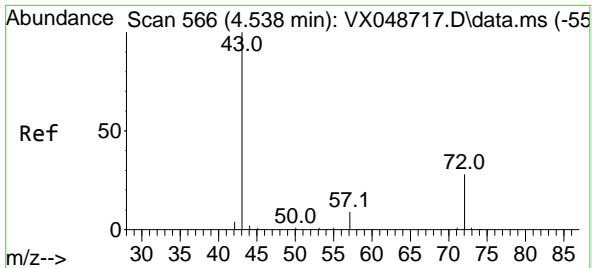
Tgt Ion: 43 Resp: 7151
 Ion Ratio Lower Upper
 43 100
 74 25.9 19.2 28.8



#20
 Methylene Chloride
 Concen: 65.211 ug/l
 RT: 2.794 min Scan# 280
 Delta R.T. 0.006 min
 Lab File: VX048787.D
 Acq: 09 Dec 2025 16:09

Tgt Ion: 84 Resp: 136891
 Ion Ratio Lower Upper
 84 100
 49 119.4 98.7 148.1
 51 36.9 29.4 44.2
 86 64.1 52.5 78.7

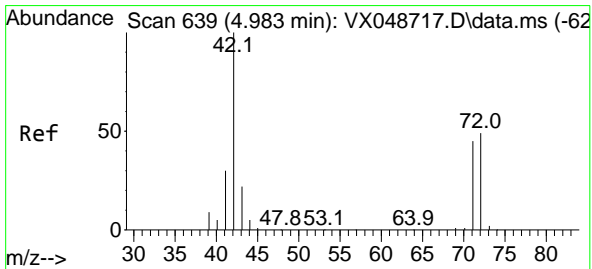
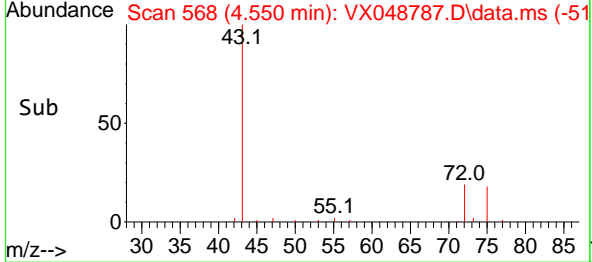
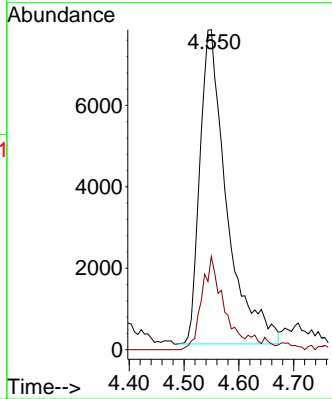
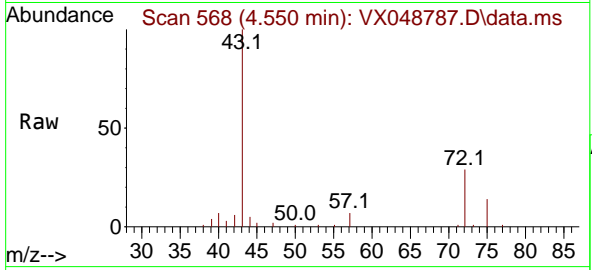




#25
 2-Butanone
 Concen: 21.223 ug/l
 RT: 4.550 min Scan# 50
 Delta R.T. 0.012 min
 Lab File: VX048787.D
 Acq: 09 Dec 2025 16:09

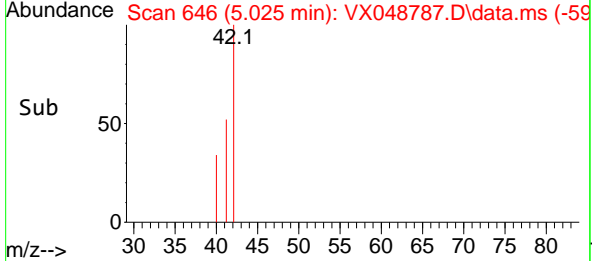
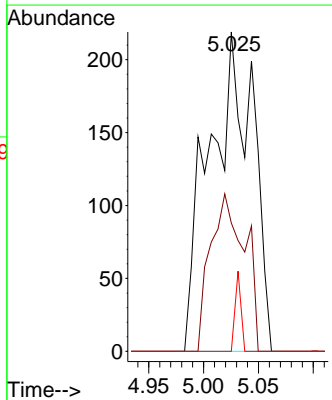
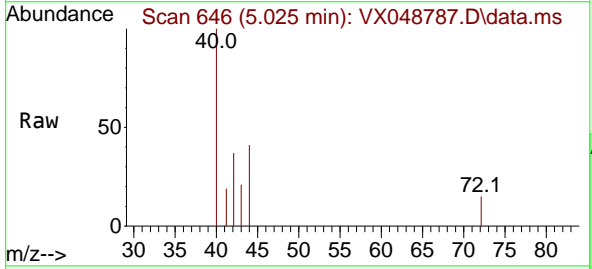
Instrument : MSVOA_X
 ClientSampleId : CHASE-K

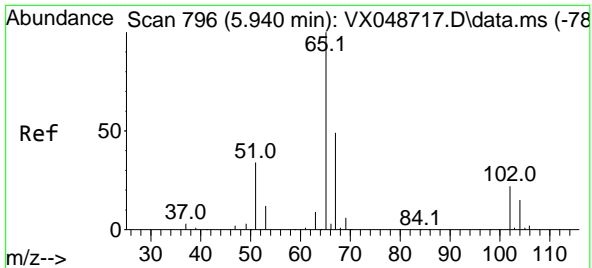
Tgt Ion: 43 Resp: 26306
 Ion Ratio Lower Upper
 43 100
 72 29.7 22.6 34.0



#29
 Tetrahydrofuran
 Concen: 0.636 ug/l
 RT: 5.025 min Scan# 646
 Delta R.T. 0.042 min
 Lab File: VX048787.D
 Acq: 09 Dec 2025 16:09

Tgt Ion: 42 Resp: 602
 Ion Ratio Lower Upper
 42 100
 72 39.0 39.4 59.2#
 71 3.3 35.8 53.6#

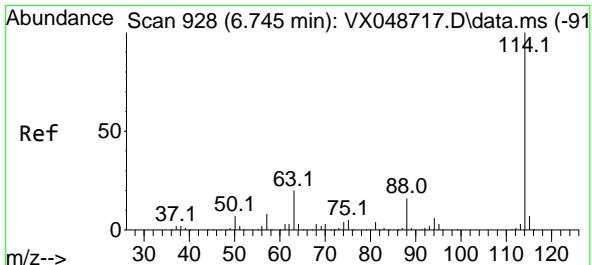
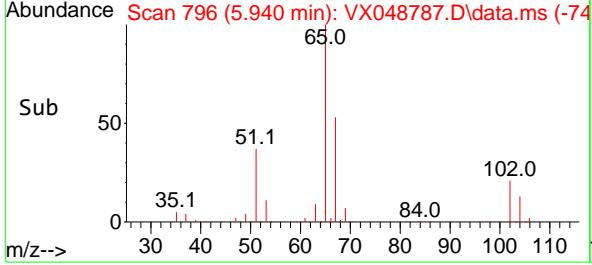
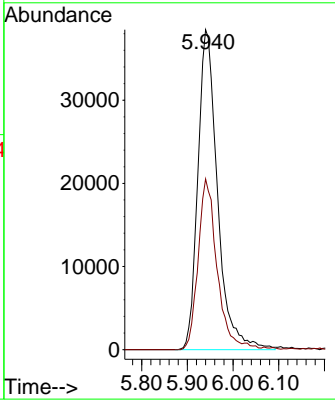
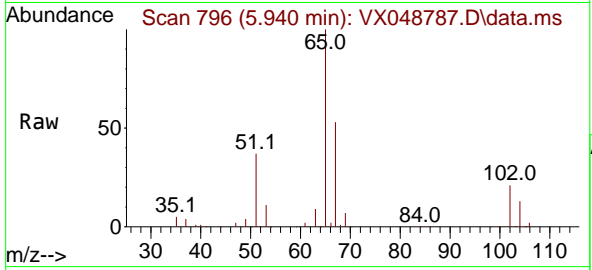




#33
 1,2-Dichloroethane-d4
 Concen: 52.456 ug/l
 RT: 5.940 min Scan# 796
 Delta R.T. -0.000 min
 Lab File: VX048787.D
 Acq: 09 Dec 2025 16:09

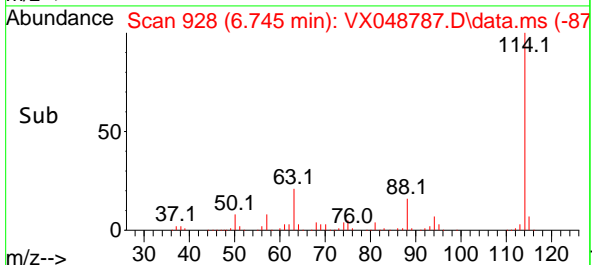
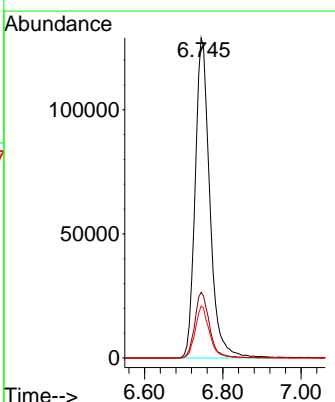
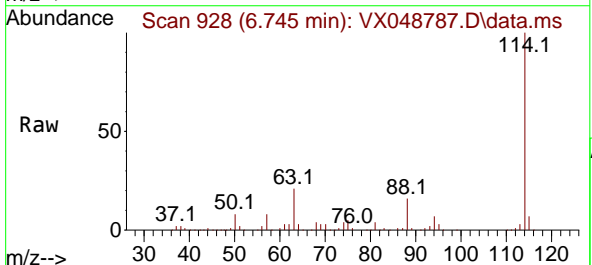
Instrument : MSVOA_X
 ClientSampleId : CHASE-K

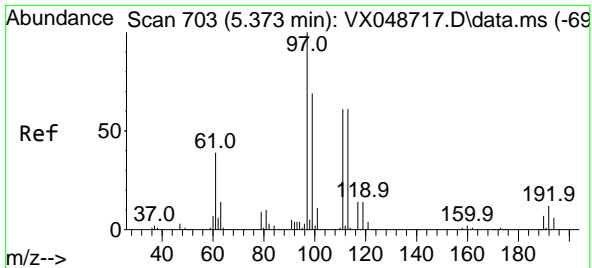
Tgt Ion: 65 Resp: 115080
 Ion Ratio Lower Upper
 65 100
 67 51.5 0.0 107.4



#34
 1,4-Difluorobenzene
 Concen: 50.000 ug/l
 RT: 6.745 min Scan# 928
 Delta R.T. -0.000 min
 Lab File: VX048787.D
 Acq: 09 Dec 2025 16:09

Tgt Ion: 114 Resp: 336114
 Ion Ratio Lower Upper
 114 100
 63 20.5 0.0 39.0
 88 16.2 0.0 31.8



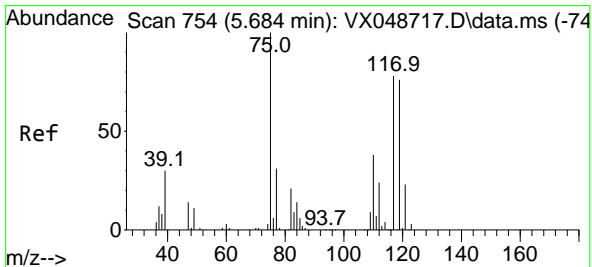
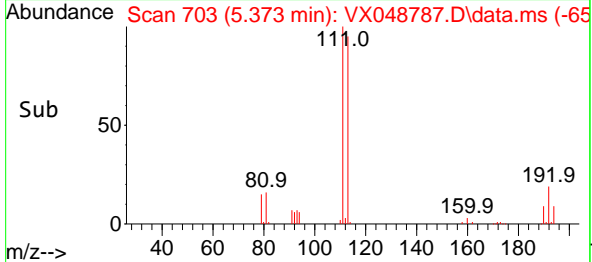
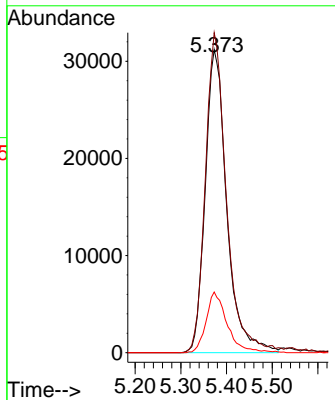
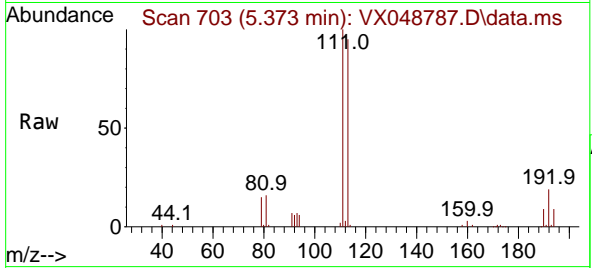


#35
 Dibromofluoromethane
 Concen: 44.109 ug/l
 RT: 5.373 min Scan# 703
 Delta R.T. -0.000 min
 Lab File: VX048787.D
 Acq: 09 Dec 2025 16:09

Instrument : MSVOA_X
 ClientSampleId : CHASE-K

Tgt Ion:113 Resp: 102080

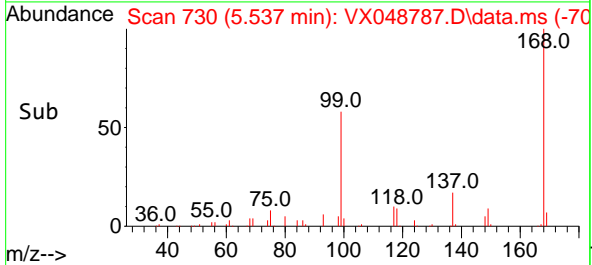
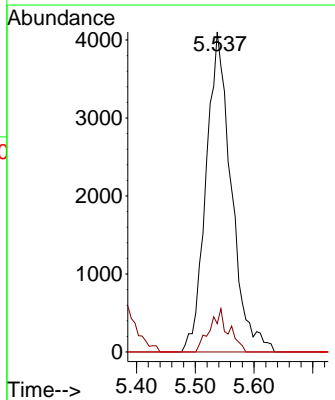
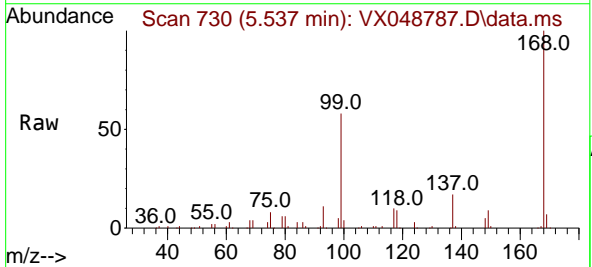
Ion	Ratio	Lower	Upper
113	100		
111	102.8	79.5	119.3
192	19.7	16.1	24.1

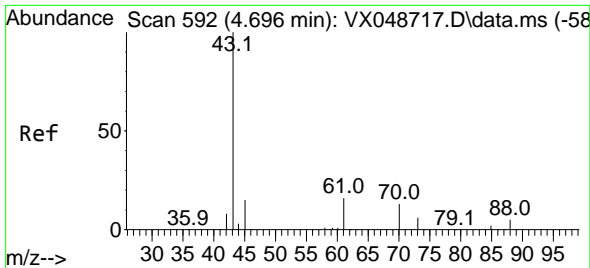


#36
 1,1-Dichloropropene
 Concen: 3.862 ug/l
 RT: 5.537 min Scan# 730
 Delta R.T. -0.147 min
 Lab File: VX048787.D
 Acq: 09 Dec 2025 16:09

Tgt Ion: 75 Resp: 12240

Ion	Ratio	Lower	Upper
75	100		
110	10.1	18.6	55.8#
77	0.0	25.3	37.9#



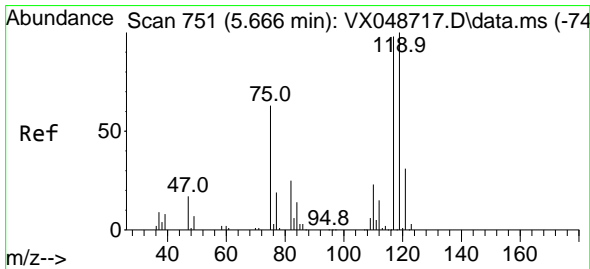
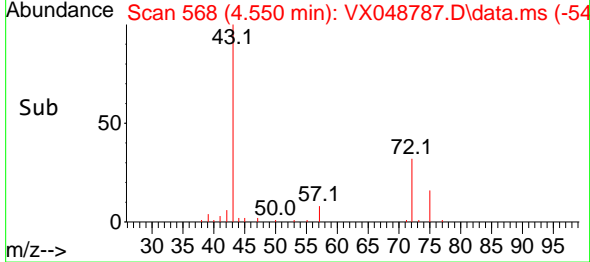
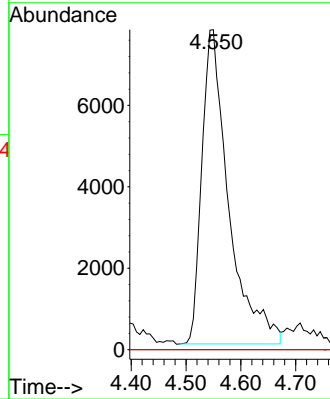
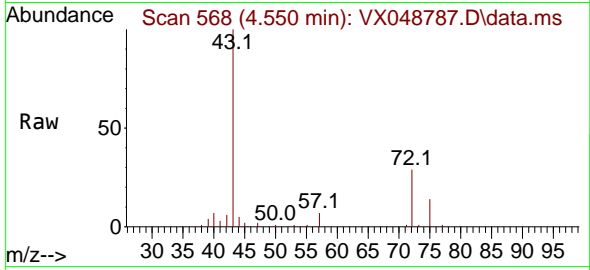


#37
 Ethyl Acetate
 Concen: 6.945 ug/l
 RT: 4.550 min Scan# 509
 Delta R.T. -0.147 min
 Lab File: VX048787.D
 Acq: 09 Dec 2025 16:09

Instrument :
 MSVOA_X
 ClientSampleId :
 CHASE-K

Tgt Ion: 43 Resp: 26306

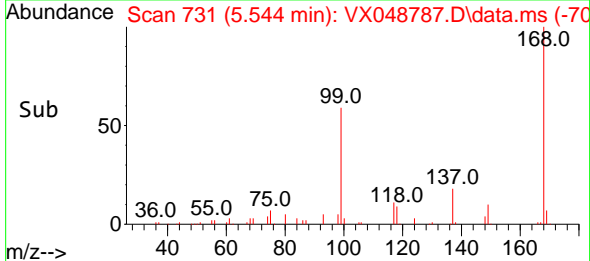
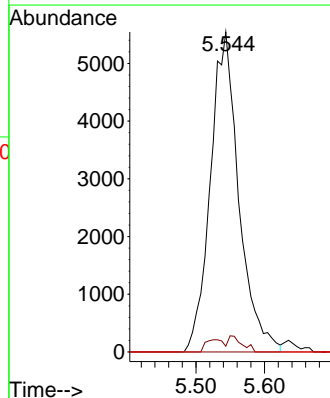
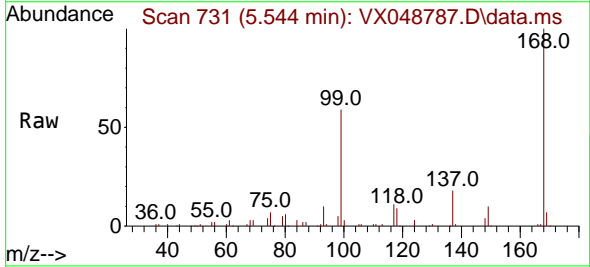
Ion	Ratio	Lower	Upper
43	100		
61	0.0	9.7	14.5#
70	0.0	8.2	12.4#

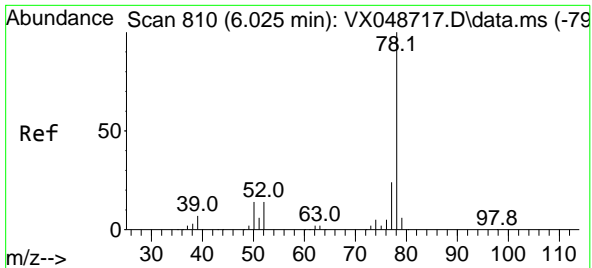


#38
 Carbon Tetrachloride
 Concen: 4.452 ug/l
 RT: 5.544 min Scan# 731
 Delta R.T. -0.122 min
 Lab File: VX048787.D
 Acq: 09 Dec 2025 16:09

Tgt Ion: 117 Resp: 15985

Ion	Ratio	Lower	Upper
117	100		
119	1.8	80.5	120.7#
121	0.0	25.4	38.0#

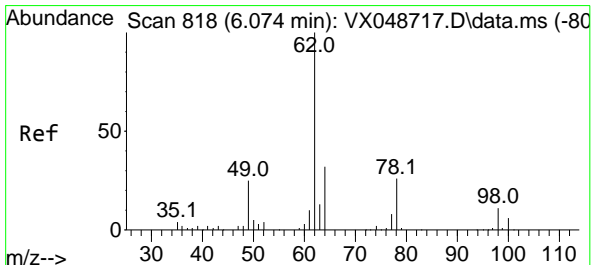
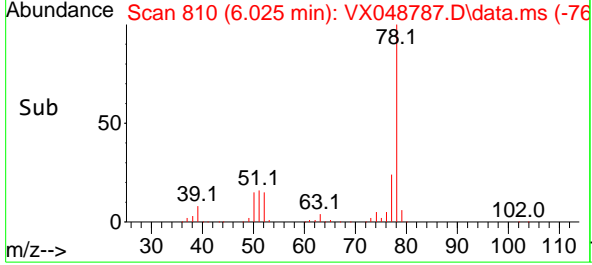
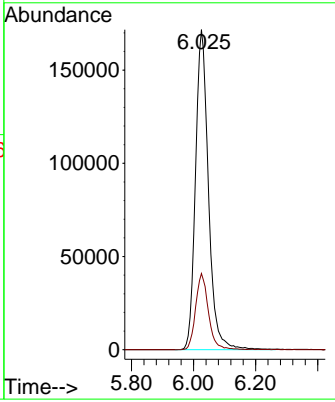
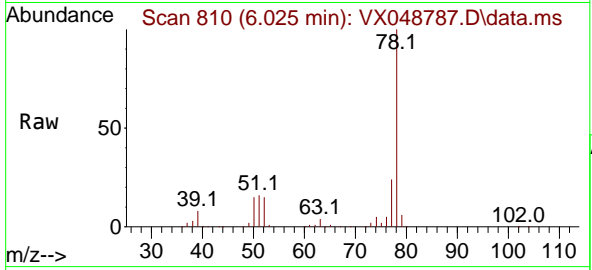




#40
Benzene
Concen: 52.870 ug/l
RT: 6.025 min Scan# 810
Delta R.T. -0.000 min
Lab File: VX048787.D
Acq: 09 Dec 2025 16:09

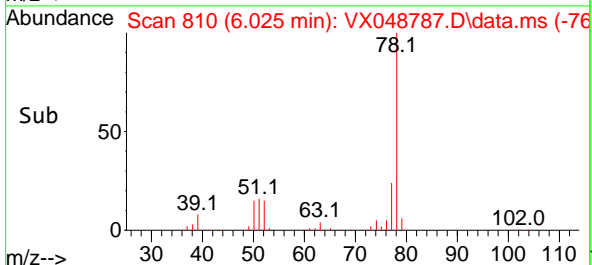
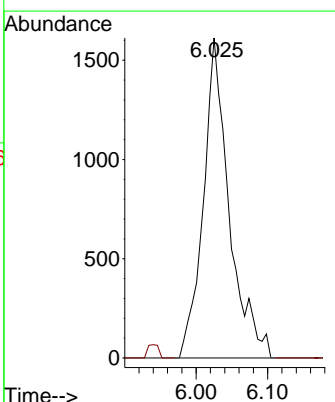
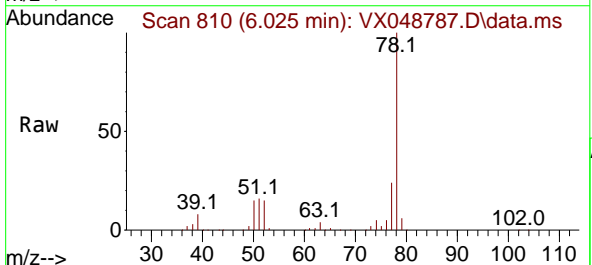
Instrument : MSVOA_X
ClientSampleId : CHASE-K

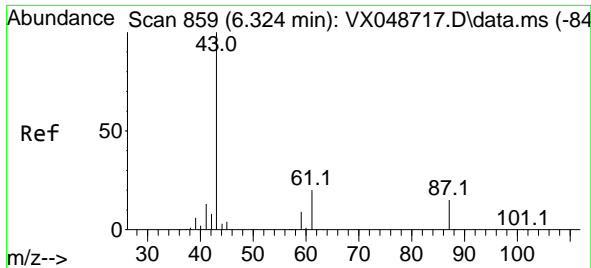
Tgt Ion: 78 Resp: 496793
Ion Ratio Lower Upper
78 100
77 23.8 18.8 28.2



#42
1,2-Dichloroethane
Concen: 1.217 ug/l
RT: 6.025 min Scan# 810
Delta R.T. -0.049 min
Lab File: VX048787.D
Acq: 09 Dec 2025 16:09

Tgt Ion: 62 Resp: 4046
Ion Ratio Lower Upper
62 100
98 0.0 0.0 20.2



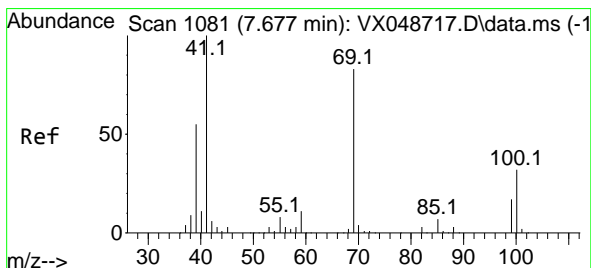
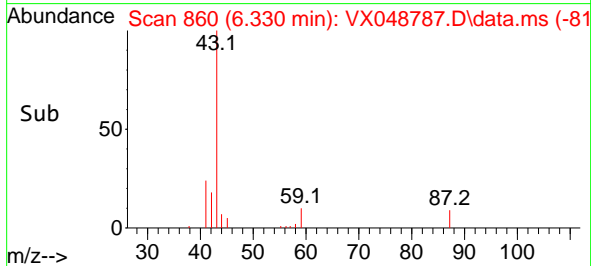
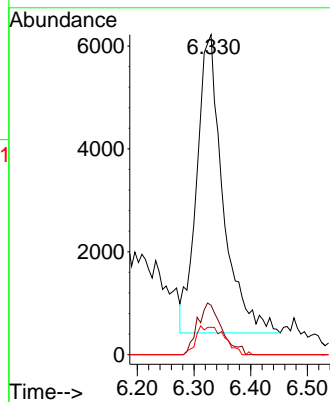
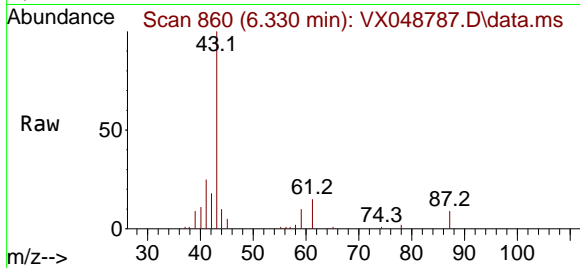


#43
 Isopropyl Acetate
 Concen: 3.252 ug/l
 RT: 6.330 min Scan# 80
 Delta R.T. 0.006 min
 Lab File: VX048787.D
 Acq: 09 Dec 2025 16:09

Instrument :
 MSVOA_X
 ClientSampleId :
 CHASE-K

Tgt Ion: 43 Resp: 18648

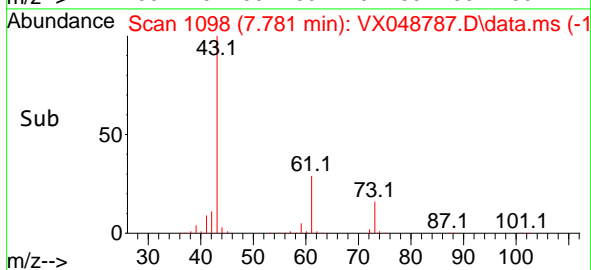
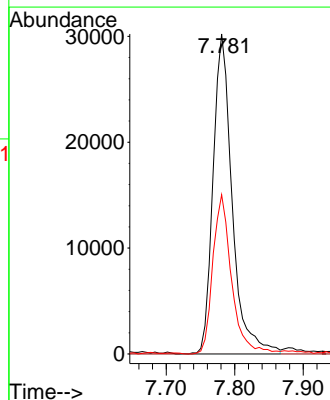
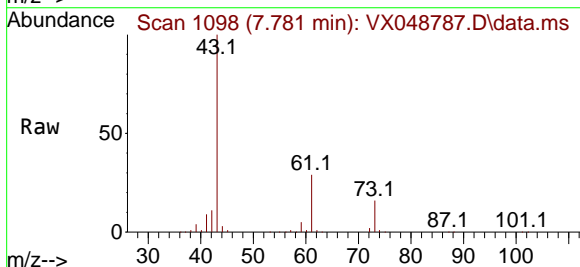
Ion	Ratio	Lower	Upper
43	100		
61	15.9	16.8	25.2#
87	10.2	11.8	17.6#

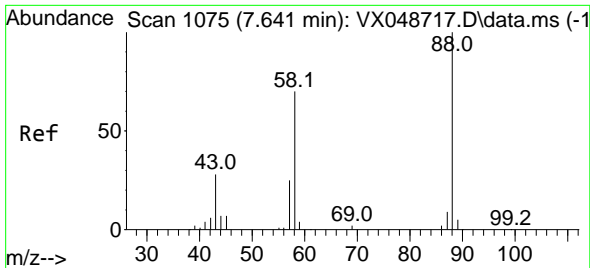


#48
 Methyl methacrylate
 Concen: 20.283 ug/l
 RT: 7.781 min Scan# 1098
 Delta R.T. 0.103 min
 Lab File: VX048787.D
 Acq: 09 Dec 2025 16:09

Tgt Ion: 41 Resp: 58516

Ion	Ratio	Lower	Upper
41	100		
69	0.0	68.5	102.7#
39	48.9	43.5	65.3

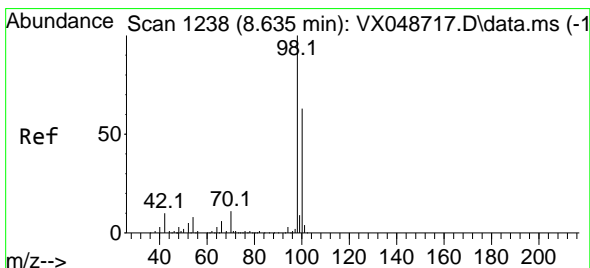
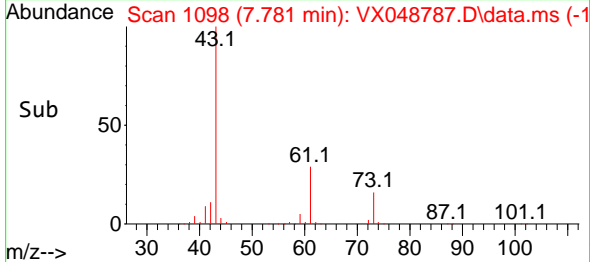
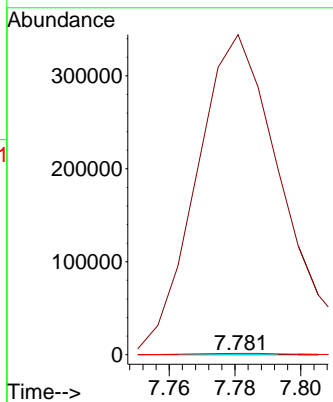
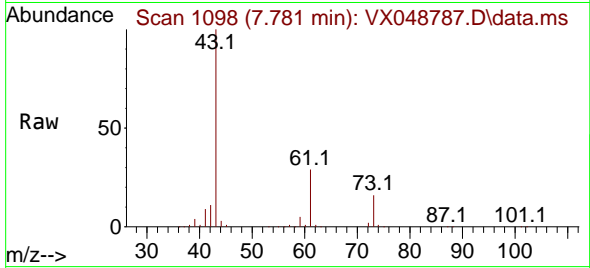




#49
 1,4-Dioxane
 Concen: 1.386 ug/l
 RT: 7.781 min Scan# 1098
 Delta R.T. 0.140 min
 Lab File: VX048787.D
 Acq: 09 Dec 2025 16:09

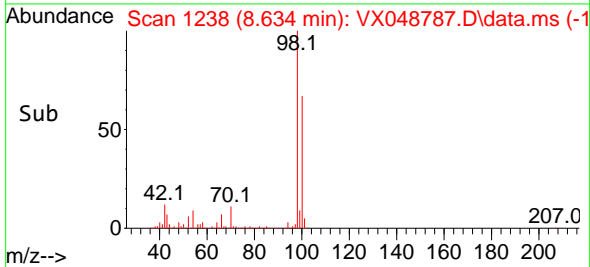
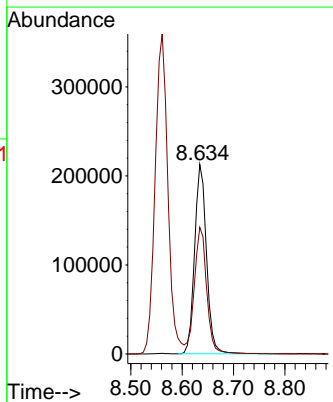
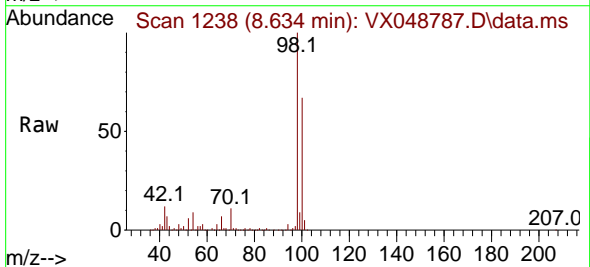
Instrument :
 MSVOA_X
 ClientSampleId :
 CHASE-K

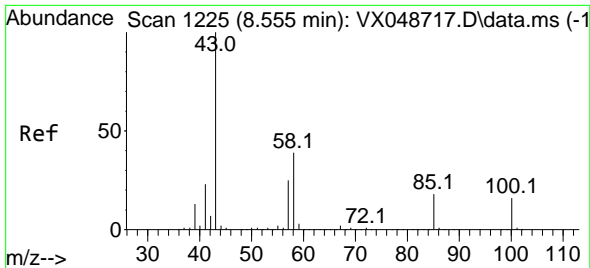
Tgt Ion: 88 Resp: 55
 Ion Ratio Lower Upper
 88 100
 43 1202690.9 28.6 43.0#
 58 5247.3 58.0 87.0#



#50
 Toluene-d8
 Concen: 42.284 ug/l
 RT: 8.634 min Scan# 1238
 Delta R.T. -0.000 min
 Lab File: VX048787.D
 Acq: 09 Dec 2025 16:09

Tgt Ion: 98 Resp: 343022
 Ion Ratio Lower Upper
 98 100
 100 69.2 53.4 80.0

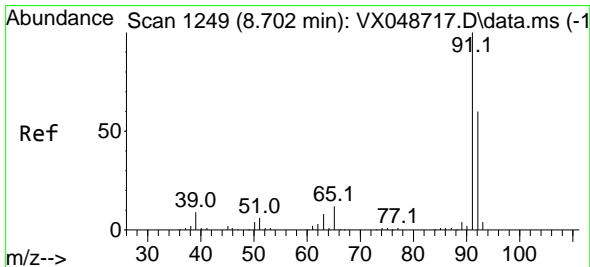
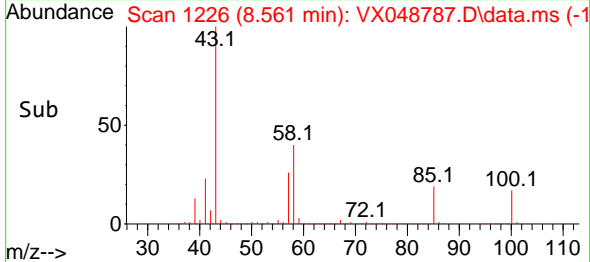
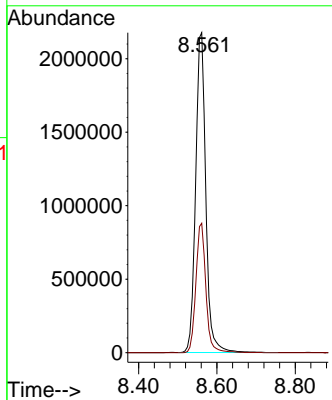
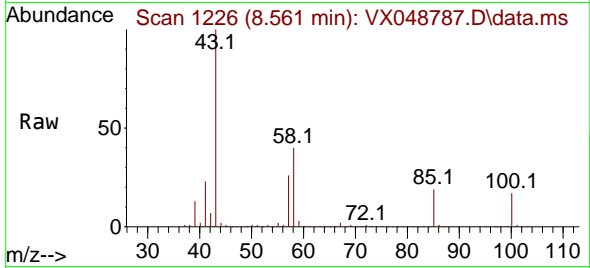




#51
 4-Methyl-2-Pentanone
 Concen: 1111.282 ug/l
 RT: 8.561 min Scan# 11
 Delta R.T. 0.006 min
 Lab File: VX048787.D
 Acq: 09 Dec 2025 16:09

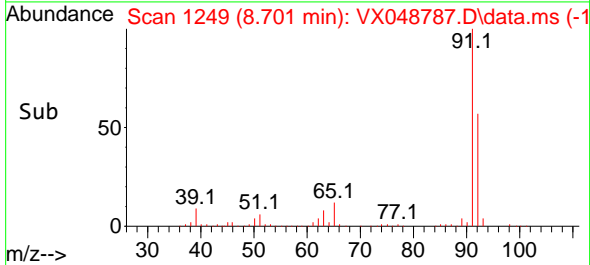
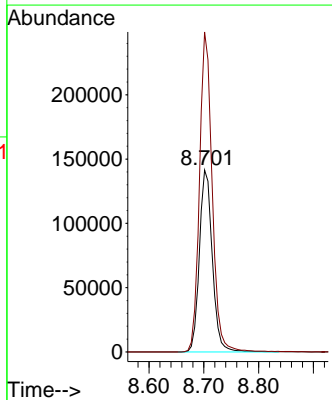
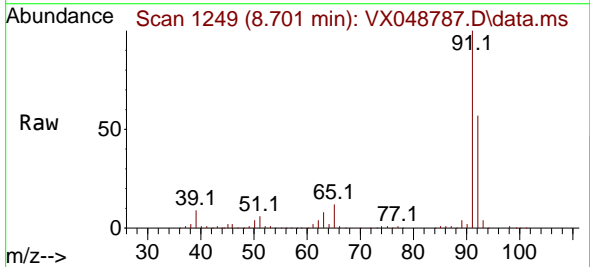
Instrument :
 MSVOA_X
 ClientSampleId :
 CHASE-K

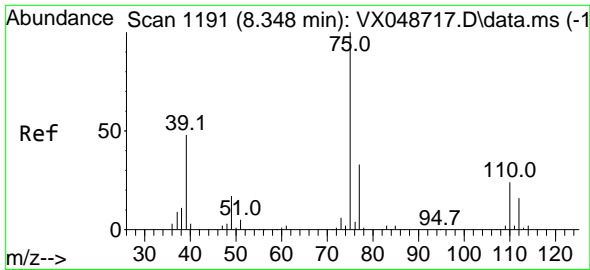
Tgt Ion: 43 Resp: 3955939
 Ion Ratio Lower Upper
 43 100
 58 39.8 32.2 48.4



#52
 Toluene
 Concen: 40.979 ug/l
 RT: 8.701 min Scan# 1249
 Delta R.T. -0.000 min
 Lab File: VX048787.D
 Acq: 09 Dec 2025 16:09

Tgt Ion: 92 Resp: 232194
 Ion Ratio Lower Upper
 92 100
 91 172.5 136.3 204.5

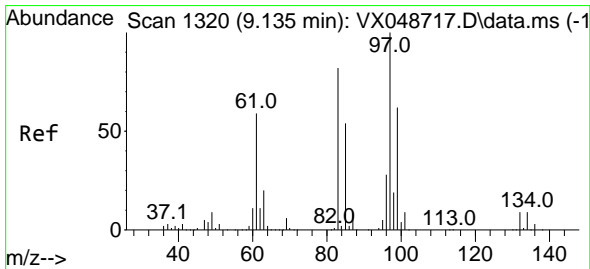
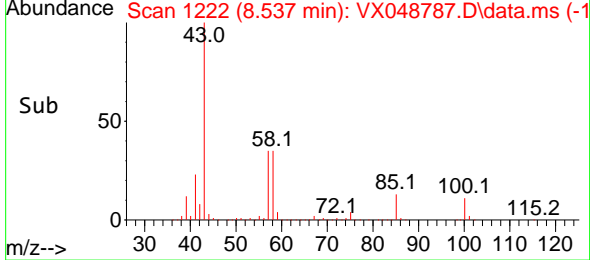
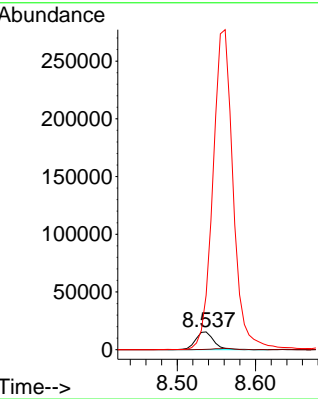
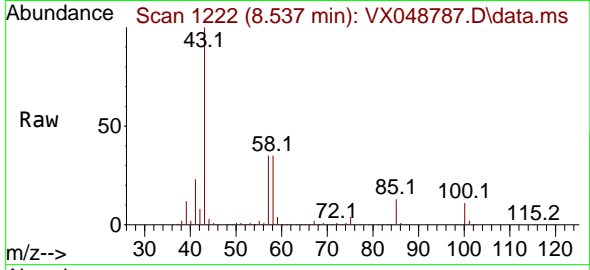




#54
 cis-1,3-Dichloropropene
 Concen: 6.561 ug/l
 RT: 8.537 min Scan# 1191
 Delta R.T. 0.189 min
 Lab File: VX048787.D
 Acq: 09 Dec 2025 16:09

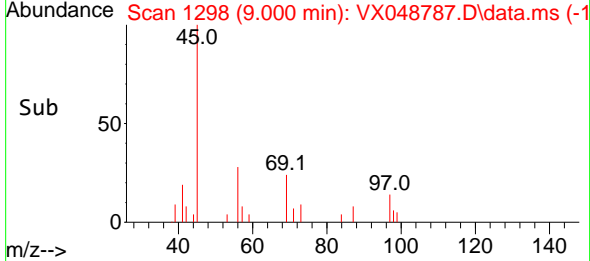
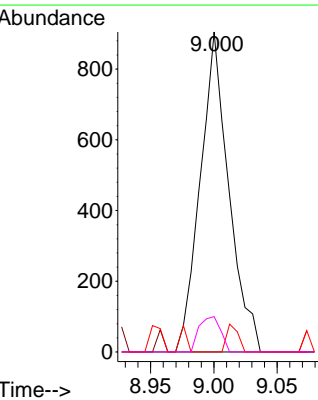
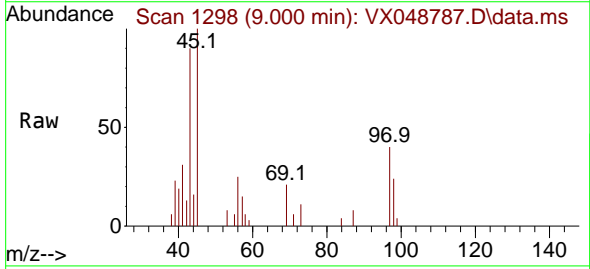
Instrument : MSVOA_X
 ClientSampleId : CHASE-K

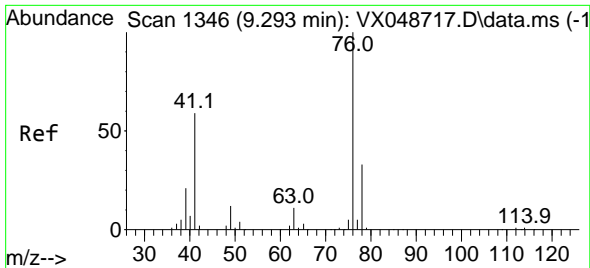
Tgt Ion	Resp	Lower	Upper
75	24909		
77	1.6	26.1	39.1#
39	305.5	38.2	57.4#



#55
 1,1,2-Trichloroethane
 Concen: 0.624 ug/l
 RT: 9.000 min Scan# 1298
 Delta R.T. -0.134 min
 Lab File: VX048787.D
 Acq: 09 Dec 2025 16:09

Tgt Ion	Resp	Lower	Upper
97	1423		
97	100		
83	0.0	66.0	99.0#
85	0.0	43.2	64.8#
99	11.0	50.0	75.0#

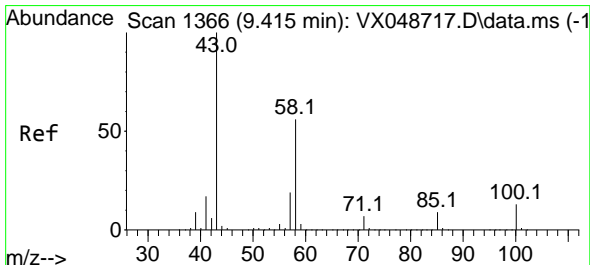
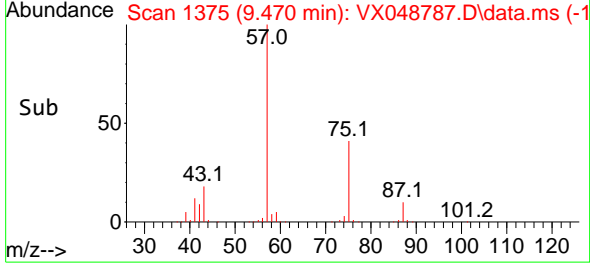
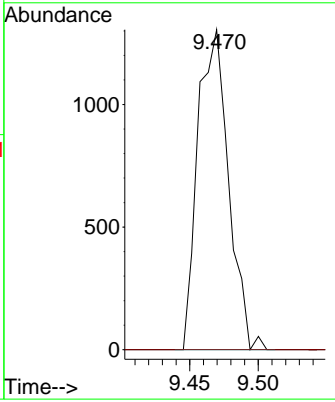
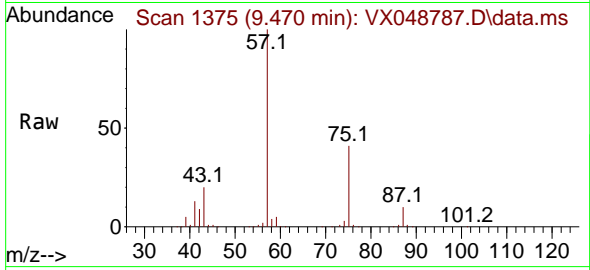




#57
 1,3-Dichloropropane
 Concen: 0.537 ug/l
 RT: 9.470 min Scan# 1375
 Delta R.T. 0.177 min
 Lab File: VX048787.D
 Acq: 09 Dec 2025 16:09

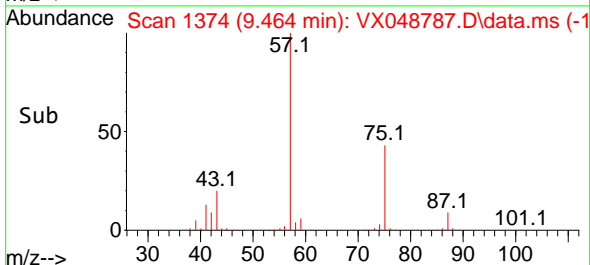
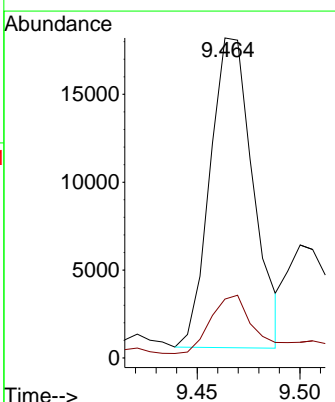
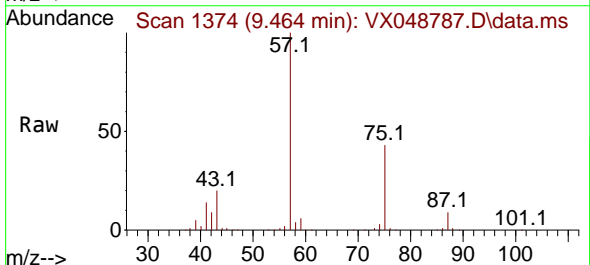
Instrument : MSVOA_X
 ClientSampleId : CHASE-K

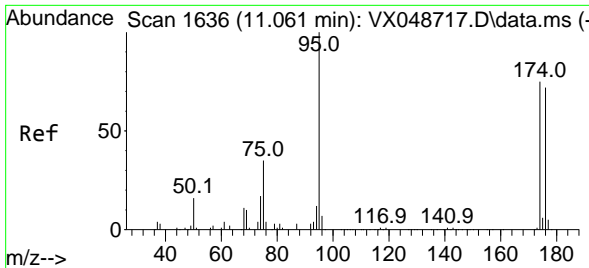
Tgt Ion: 76 Resp: 2036
 Ion Ratio Lower Upper
 76 100
 78 0.0 26.0 39.0#



#59
 2-Hexanone
 Concen: 10.314 ug/l
 RT: 9.464 min Scan# 1374
 Delta R.T. 0.049 min
 Lab File: VX048787.D
 Acq: 09 Dec 2025 16:09

Tgt Ion: 43 Resp: 25773
 Ion Ratio Lower Upper
 43 100
 58 19.0 27.8 83.4#



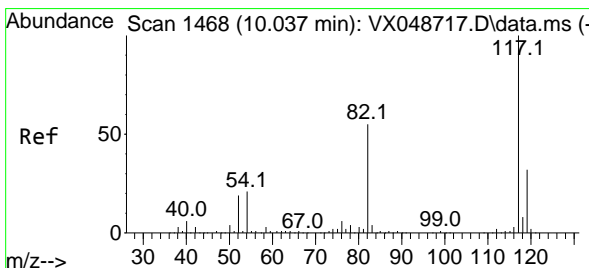
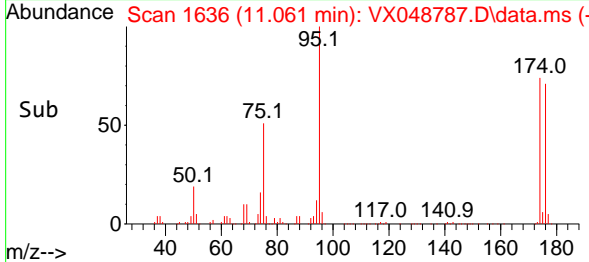
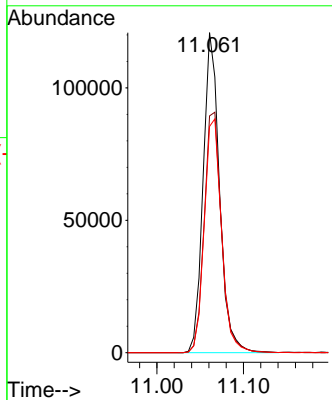
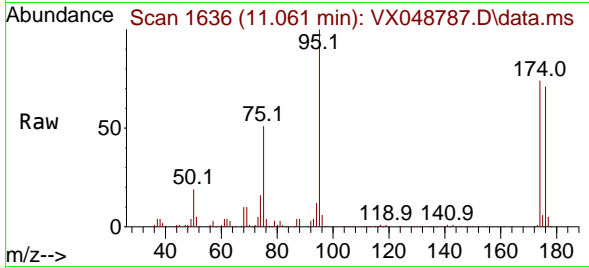


#62
 4-Bromofluorobenzene
 Concen: 56.676 ug/l
 RT: 11.061 min Scan# 1
 Delta R.T. -0.000 min
 Lab File: VX048787.D
 Acq: 09 Dec 2025 16:09

Instrument :
 MSVOA_X
 ClientSampleId :
 CHASE-K

Tgt Ion: 95 Resp: 158542

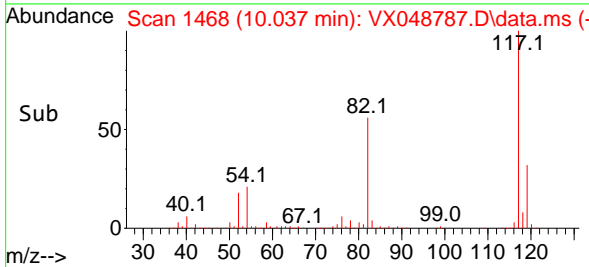
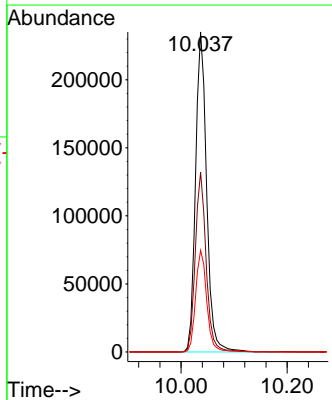
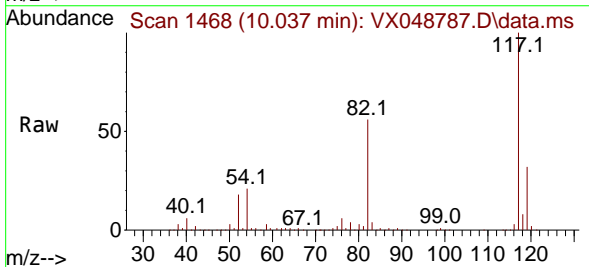
Ion	Ratio	Lower	Upper
95	100		
174	79.9	0.0	157.8
176	77.2	0.0	154.0

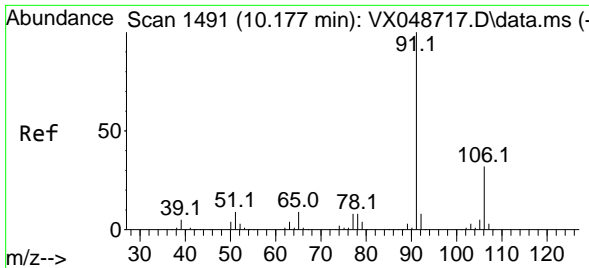


#63
 Chlorobenzene-d5
 Concen: 50.000 ug/l
 RT: 10.037 min Scan# 1468
 Delta R.T. -0.000 min
 Lab File: VX048787.D
 Acq: 09 Dec 2025 16:09

Tgt Ion: 117 Resp: 341281

Ion	Ratio	Lower	Upper
117	100		
82	56.2	44.1	66.1
119	31.8	25.2	37.8

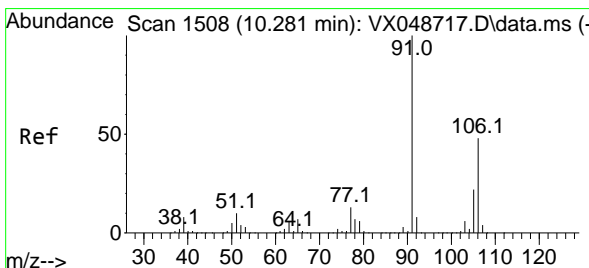
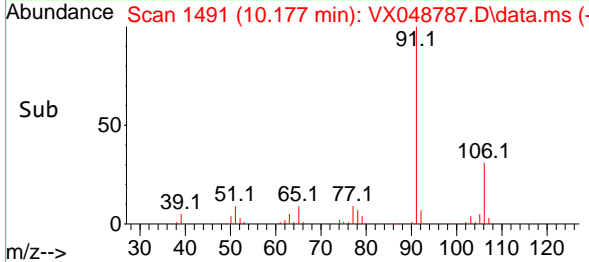
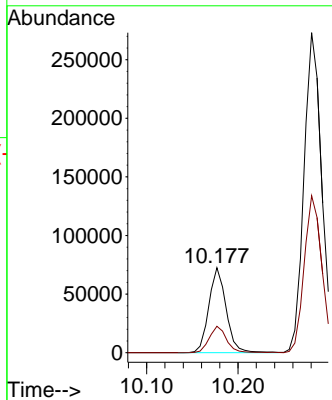
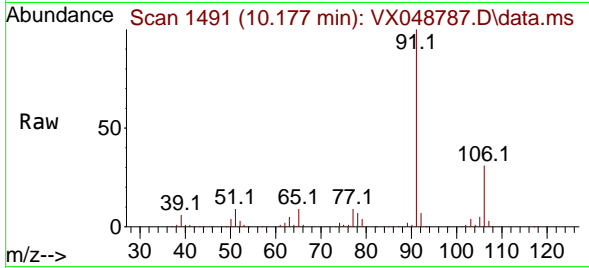




#67
 Ethyl Benzene
 Concen: 7.806 ug/l
 RT: 10.177 min Scan# 1491
 Delta R.T. -0.000 min
 Lab File: VX048787.D
 Acq: 09 Dec 2025 16:09

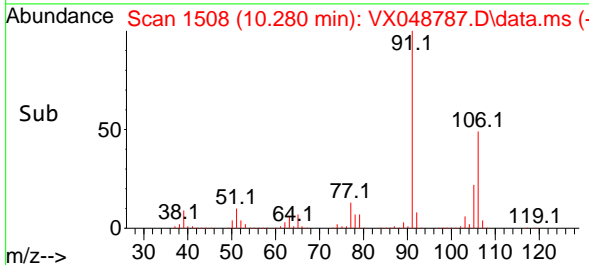
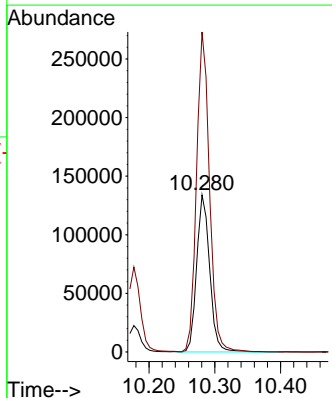
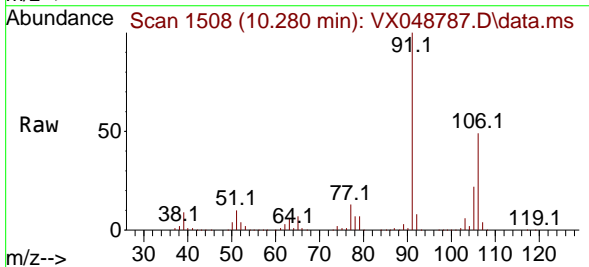
Instrument :
 MSVOA_X
 ClientSampleId :
 CHASE-K

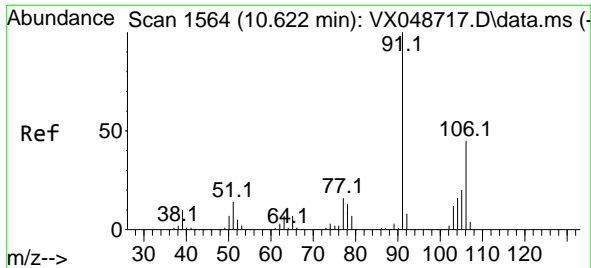
Tgt Ion: 91 Resp: 95154
 Ion Ratio Lower Upper
 91 100
 106 31.2 25.3 37.9



#68
 m/p-Xylenes
 Concen: 38.844 ug/l
 RT: 10.280 min Scan# 1508
 Delta R.T. -0.000 min
 Lab File: VX048787.D
 Acq: 09 Dec 2025 16:09

Tgt Ion: 106 Resp: 184444
 Ion Ratio Lower Upper
 106 100
 91 203.3 164.2 246.4

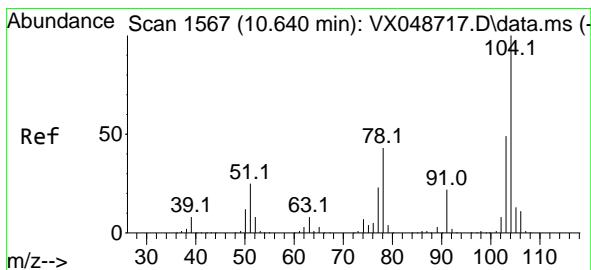
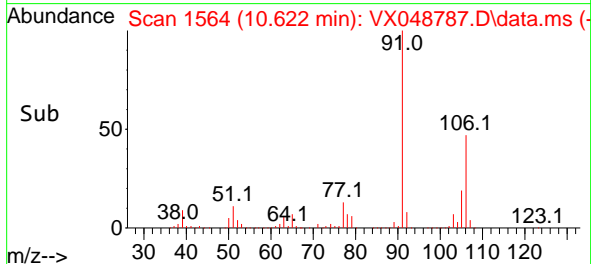
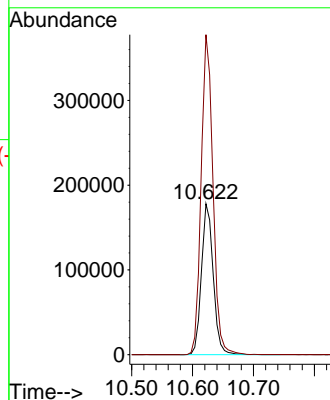
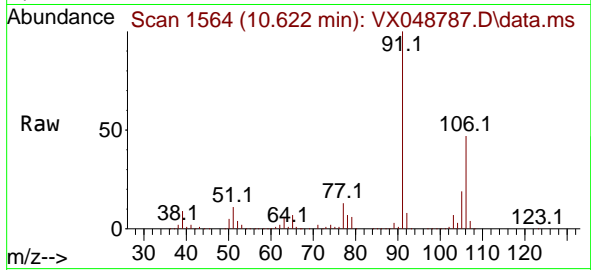




#69
 o-Xylene
 Concen: 53.598 ug/l
 RT: 10.622 min Scan# 1564
 Delta R.T. -0.000 min
 Lab File: VX048787.D
 Acq: 09 Dec 2025 16:09

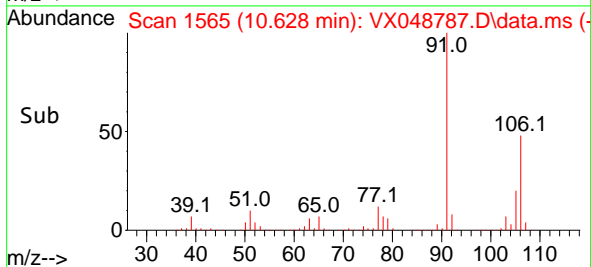
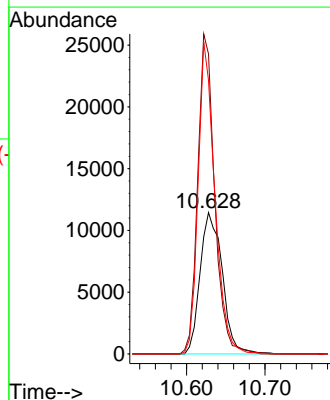
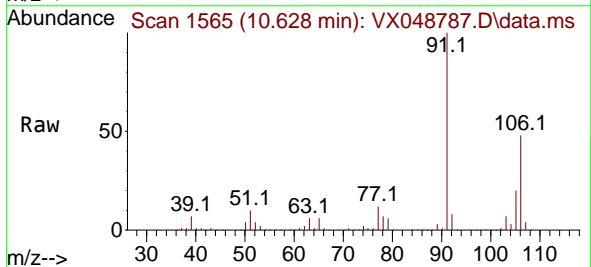
Instrument : MSVOA_X
 ClientSampleId : CHASE-K

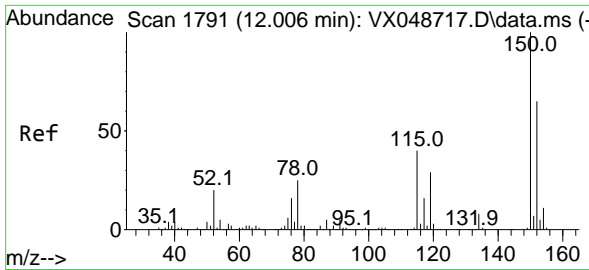
Tgt Ion:106 Resp: 238483
 Ion Ratio Lower Upper
 106 100
 91 213.0 108.1 324.3



#70
 Styrene
 Concen: 2.950 ug/l
 RT: 10.628 min Scan# 1565
 Delta R.T. -0.012 min
 Lab File: VX048787.D
 Acq: 09 Dec 2025 16:09

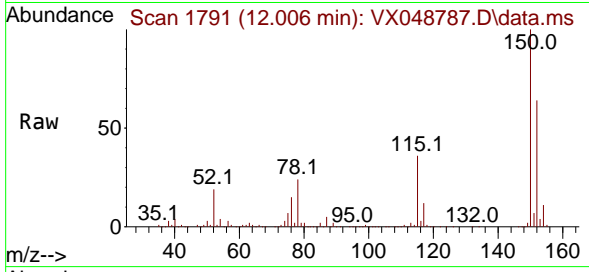
Tgt Ion:104 Resp: 22534
 Ion Ratio Lower Upper
 104 100
 78 173.2 40.6 60.8#
 103 166.8 43.4 65.2#



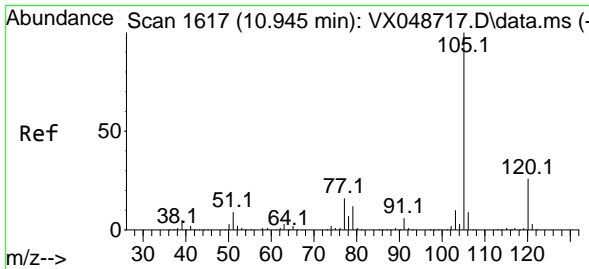
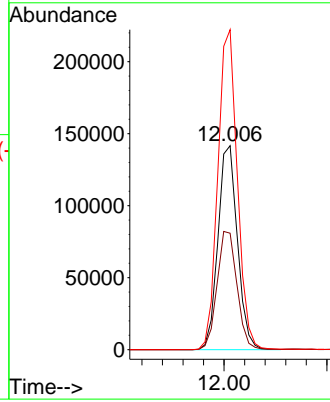
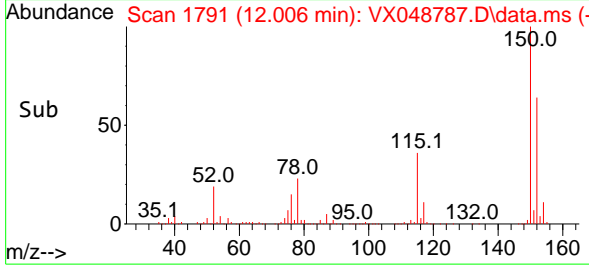


#72
 1,4-Dichlorobenzene-d4
 Concen: 50.000 ug/l
 RT: 12.006 min Scan# 1791
 Delta R.T. -0.000 min
 Lab File: VX048787.D
 Acq: 09 Dec 2025 16:09

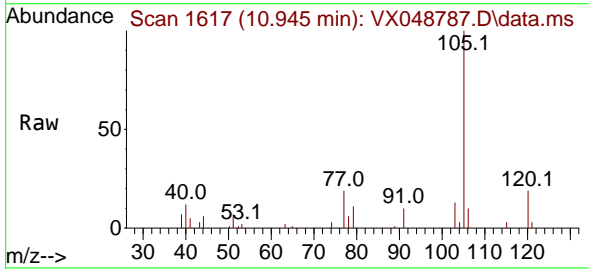
Instrument : MSVOA_X
 ClientSampleId : CHASE-K



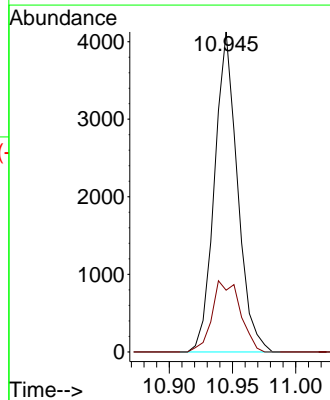
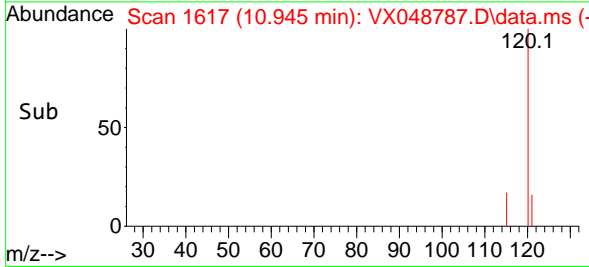
Tgt Ion:152 Resp: 185952
 Ion Ratio Lower Upper
 152 100
 115 59.3 42.1 126.4
 150 157.1 0.0 347.8

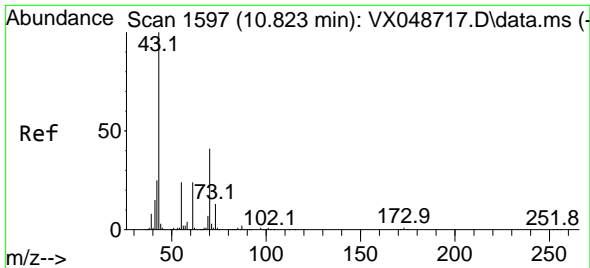


#73
 Isopropylbenzene
 Concen: 0.415 ug/l
 RT: 10.945 min Scan# 1617
 Delta R.T. -0.000 min
 Lab File: VX048787.D
 Acq: 09 Dec 2025 16:09



Tgt Ion:105 Resp: 5199
 Ion Ratio Lower Upper
 105 100
 120 27.3 13.2 39.5



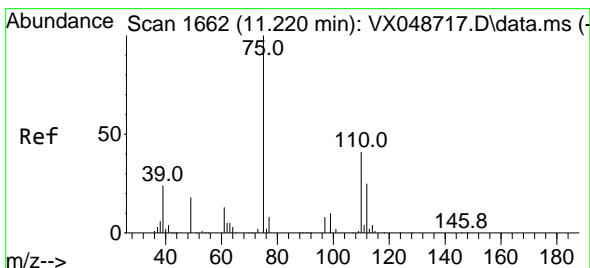
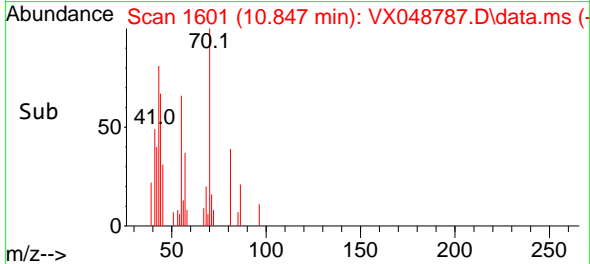
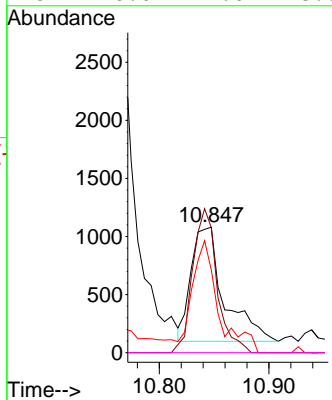
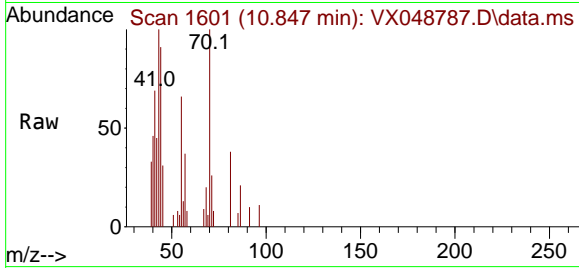


#74
 N-amy1 acetate
 Concen: 0.380 ug/l
 RT: 10.847 min Scan# 1601
 Delta R.T. 0.024 min
 Lab File: VX048787.D
 Acq: 09 Dec 2025 16:09

Instrument :
 MSVOA_X
 ClientSampleId :
 CHASE-K

Tgt Ion: 43 Resp: 2070

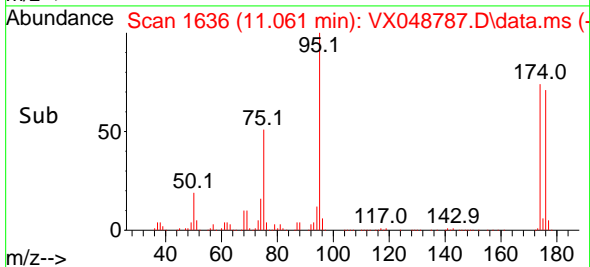
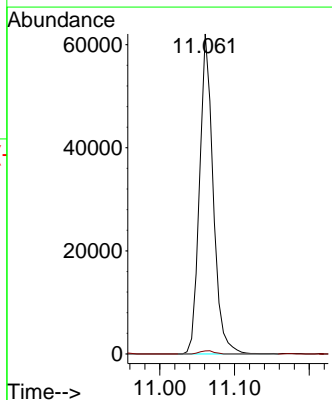
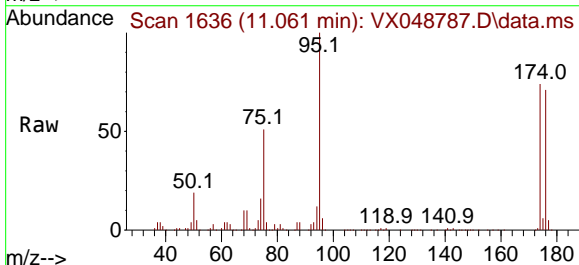
Ion	Ratio	Lower	Upper
43	100		
70	92.5	33.9	50.9#
55	76.5	19.1	28.7#
61	0.0	19.0	28.6#

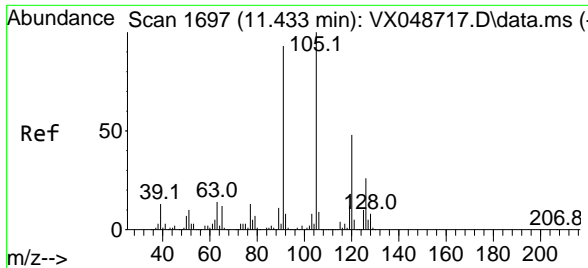


#76
 1,2,3-Trichloropropane
 Concen: 22.718 ug/l
 RT: 11.061 min Scan# 1636
 Delta R.T. -0.159 min
 Lab File: VX048787.D
 Acq: 09 Dec 2025 16:09

Tgt Ion: 75 Resp: 78683

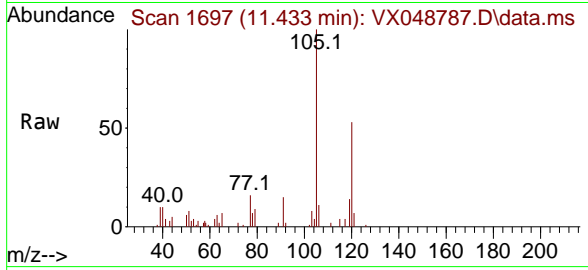
Ion	Ratio	Lower	Upper
75	100		
77	1.0	24.3	73.0#



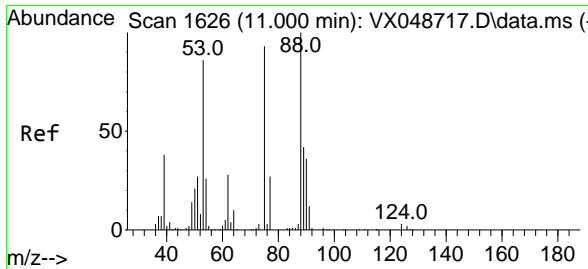
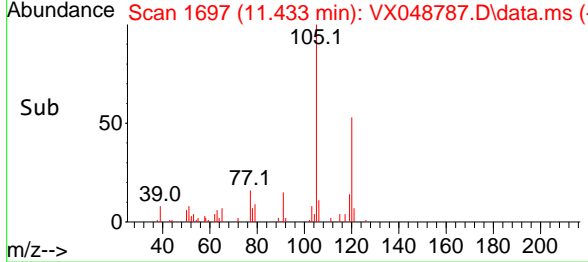
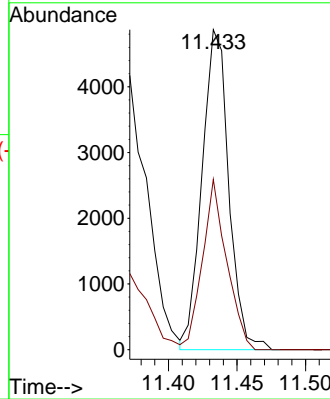


#80
 1,3,5-Trimethylbenzene
 Concen: 0.640 ug/l
 RT: 11.433 min Scan# 11
 Delta R.T. -0.000 min
 Lab File: VX048787.D
 Acq: 09 Dec 2025 16:09

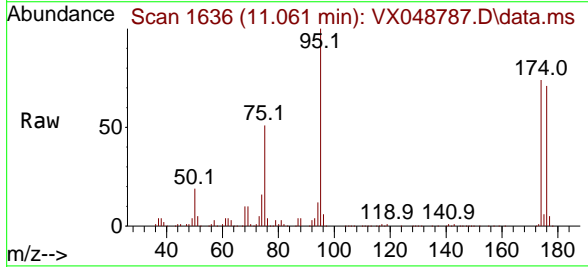
Instrument :
 MSVOA_X
 ClientSampleId :
 CHASE-K



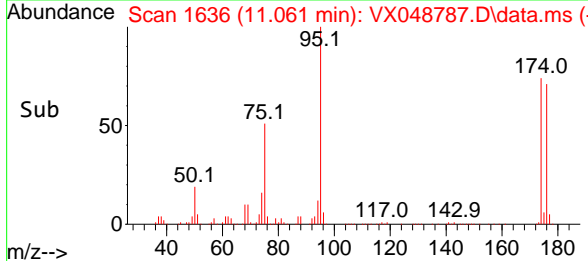
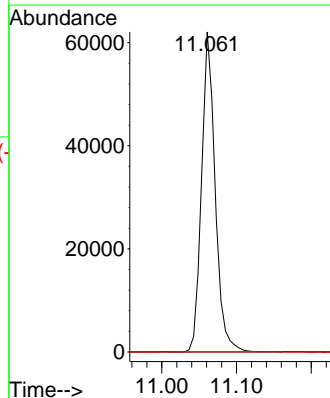
Tgt Ion:105 Resp: 6594
 Ion Ratio Lower Upper
 105 100
 120 48.3 24.4 73.2

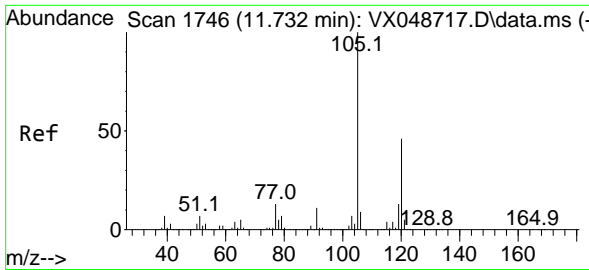


#81
 trans-1,4-Dichloro-2-butene
 Concen: 53.965 ug/l
 RT: 11.061 min Scan# 1636
 Delta R.T. 0.061 min
 Lab File: VX048787.D
 Acq: 09 Dec 2025 16:09



Tgt Ion: 75 Resp: 78683
 Ion Ratio Lower Upper
 75 100
 53 0.0 79.9 119.9#
 89 0.0 67.1 100.7#

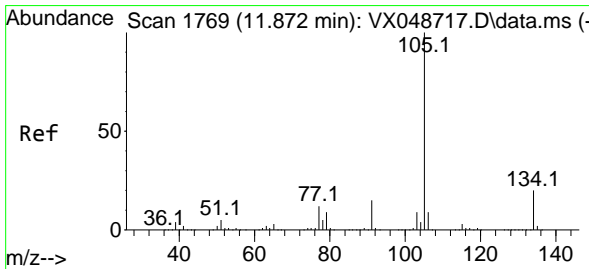
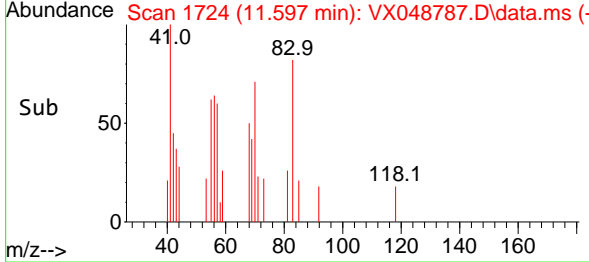
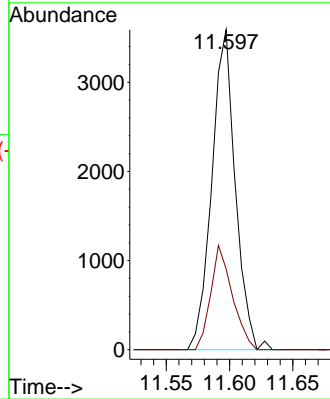
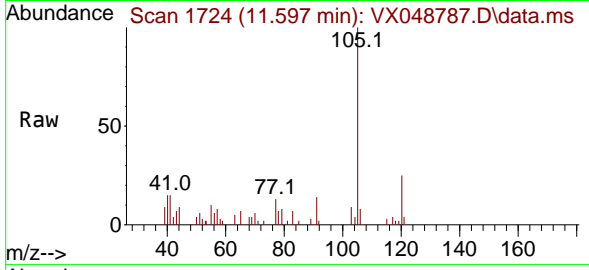




#84
 1,2,4-Trimethylbenzene
 Concen: 0.445 ug/l
 RT: 11.597 min Scan# 1724
 Delta R.T. -0.134 min
 Lab File: VX048787.D
 Acq: 09 Dec 2025 16:09

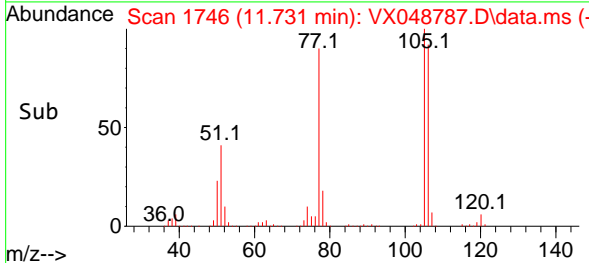
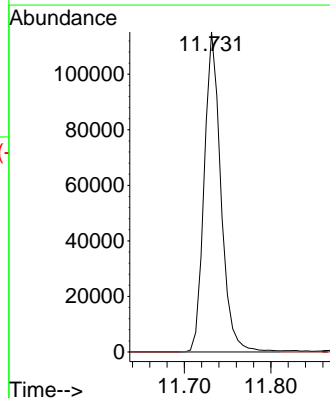
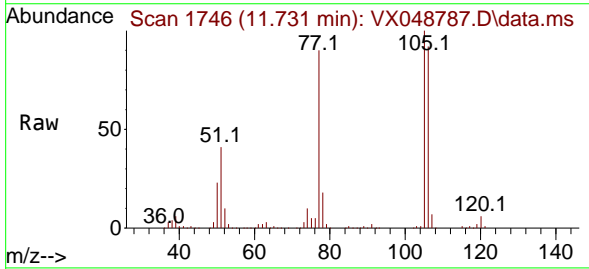
Instrument :
 MSVOA_X
 ClientSampleId :
 CHASE-K

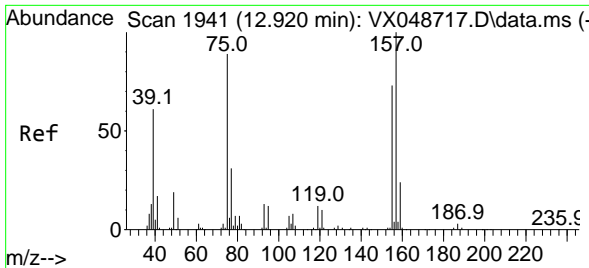
Tgt Ion:105 Resp: 4628
 Ion Ratio Lower Upper
 105 100
 120 30.0 22.3 66.8



#85
 sec-Butylbenzene
 Concen: 11.882 ug/l
 RT: 11.731 min Scan# 1746
 Delta R.T. -0.140 min
 Lab File: VX048787.D
 Acq: 09 Dec 2025 16:09

Tgt Ion:105 Resp: 154118
 Ion Ratio Lower Upper
 105 100
 134 0.0 9.8 29.5#



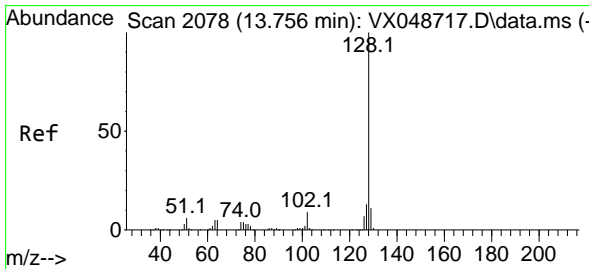
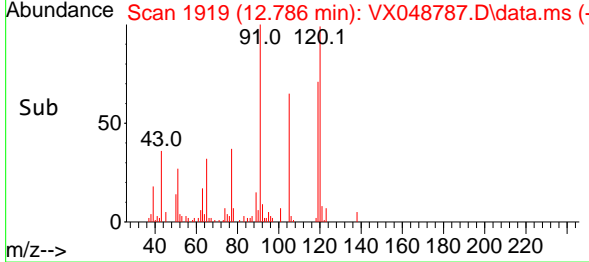
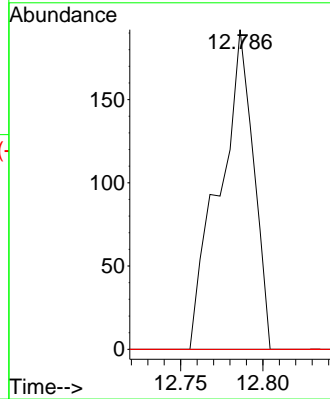
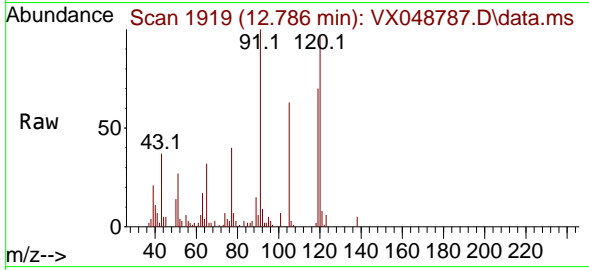


#92
 1,2-Dibromo-3-Chloropropane
 Concen: 0.269 ug/l
 RT: 12.786 min Scan# 1941
 Delta R.T. -0.134 min
 Lab File: VX048787.D
 Acq: 09 Dec 2025 16:09

Instrument : MSVOA_X
 ClientSampleId : CHASE-K

Tgt Ion: 75 Resp: 277

Ion	Ratio	Lower	Upper
75	100		
155	0.0	43.0	129.2#
157	0.0	56.0	168.2#



#95
 Naphthalene
 Concen: 24.098 ug/l
 RT: 13.755 min Scan# 2078
 Delta R.T. -0.000 min
 Lab File: VX048787.D
 Acq: 09 Dec 2025 16:09

Tgt Ion: 128 Resp: 249609

Ion	Ratio	Lower	Upper
128	100		
127	12.5	10.2	15.2
129	10.6	8.6	13.0

