

Data Path : Z:\voasrv\HPCHEM1\MSVOA\_X\Data\VX120925\  
 Data File : VX048789.D  
 Acq On : 09 Dec 2025 16:50  
 Operator : JC/MD  
 Sample : Q3803-13  
 Misc : 5.0mL/MSVOA\_X/WATER  
 ALS Vial : 23 Sample Multiplier: 1

Instrument :  
 MSVOA\_X  
 ClientSampleId :

Quant Time: Dec 10 00:27:55 2025  
 Quant Method : Z:\voasrv\HPCHEM1\MSVOA\_X\Method\82X120425W.M  
 Quant Title : SW846 8260  
 QLast Update : Fri Dec 05 03:27:34 2025  
 Response via : Initial Calibration

Compound	R.T.	QIon	Response	Conc	Units	Dev(Min)
Internal Standards						
1) Pentafluorobenzene	5.544	168	169661	50.000	ug/l	0.00
34) 1,4-Difluorobenzene	6.745	114	346552	50.000	ug/l	0.00
63) Chlorobenzene-d5	10.037	117	370535	50.000	ug/l	0.00
72) 1,4-Dichlorobenzene-d4	12.006	152	203628	50.000	ug/l	0.00
System Monitoring Compounds						
33) 1,2-Dichloroethane-d4	5.940	65	125010	54.897	ug/l	0.00
Spiked Amount	50.000	Range 78 - 117	Recovery	=	109.800%	
35) Dibromofluoromethane	5.373	113	110782	46.427	ug/l	0.00
Spiked Amount	50.000	Range 75 - 124	Recovery	=	92.860%	
50) Toluene-d8	8.635	98	391399	46.795	ug/l	0.00
Spiked Amount	50.000	Range 92 - 112	Recovery	=	93.580%	
62) 4-Bromofluorobenzene	11.061	95	178911	62.031	ug/l	0.00
Spiked Amount	50.000	Range 83 - 123	Recovery	=	124.060%#	
Target Compounds						
						Qvalue
11) Tert butyl alcohol	2.928	59	6458	17.566	ug/l	97
13) Acrolein	2.233	56	627	41.660	ug/l #	1
16) Acetone	2.374	43	111776	128.221	ug/l	98
18) Methyl Acetate	2.703	43	5673	2.313	ug/l	90
20) Methylene Chloride	2.788	84	115503	53.009	ug/l	97
25) 2-Butanone	4.550	43	22417	17.423	ug/l #	86
31) Cyclohexane	5.458	56	2069	0.672	ug/l #	61
36) 1,1-Dichloropropene	5.538	75	12361	3.782	ug/l #	46
37) Ethyl Acetate	4.550	43	22417	5.740	ug/l #	71
38) Carbon Tetrachloride	5.544	117	17459	4.716	ug/l #	12
39) Methylcyclohexane	7.367	83	1446	0.374	ug/l #	90
40) Benzene	6.025	78	1291628	133.318	ug/l	99
42) 1,2-Dichloroethane	6.025	62	10835	3.160	ug/l #	73
43) Isopropyl Acetate	6.330	43	14848	2.511	ug/l	93
48) Methyl methacrylate	7.781	41	52828	17.760	ug/l #	40
49) 1,4-Dioxane	7.775	88	114	2.787	ug/l #	1
51) 4-Methyl-2-Pentanone	8.531	43	54314	14.798	ug/l #	35
52) Toluene	8.702	92	430538	73.695	ug/l	100
54) cis-1,3-Dichloropropene	8.531	75	20960	5.354	ug/l #	57
55) 1,1,2-Trichloroethane	9.000	97	2948	1.254	ug/l #	20
57) 1,3-Dichloropropane	9.464	76	1622	0.415	ug/l #	42
59) 2-Hexanone	9.421	43	2855	1.108	ug/l	100
67) Ethyl Benzene	10.177	91	43720	3.303	ug/l	94
68) m/p-Xylenes	10.281	106	80930	15.698	ug/l	99
69) o-Xylene	10.622	106	50059	10.362	ug/l	99
70) Styrene	10.640	104	18216	2.196	ug/l #	65
74) N-amyl acetate	10.835	43	1800	0.302	ug/l #	1
76) 1,2,3-Trichloropropane	11.061	75	88205	23.257	ug/l #	30
78) n-propylbenzene	11.287	91	3771	0.237	ug/l	97
79) 2-Chlorotoluene	11.360	91	2412	0.249	ug/l	77
80) 1,3,5-Trimethylbenzene	11.433	105	9032	0.801	ug/l	89
81) trans-1,4-Dichloro-2-b...	11.061	75	88205	55.244	ug/l #	3
82) 4-Chlorotoluene	11.360	91	2412	0.213	ug/l	84
84) 1,2,4-Trimethylbenzene	11.732	105	45203	3.973	ug/l	73
85) sec-Butylbenzene	11.732	105	45203	3.182	ug/l #	57
92) 1,2-Dibromo-3-Chloropr...	12.786	75	495	0.439	ug/l #	1

Data Path : Z:\voasrv\HPCHEM1\MSVOA\_X\Data\VX120925\  
Data File : VX048789.D  
Acq On : 09 Dec 2025 16:50  
Operator : JC/MD  
Sample : Q3803-13  
Misc : 5.0mL/MSVOA\_X/WATER  
ALS Vial : 23 Sample Multiplier: 1

Instrument :  
MSVOA\_X  
ClientSampleId :

Quant Time: Dec 10 00:27:55 2025  
Quant Method : Z:\voasrv\HPCHEM1\MSVOA\_X\Method\82X120425W.M  
Quant Title : SW846 8260  
QLast Update : Fri Dec 05 03:27:34 2025  
Response via : Initial Calibration

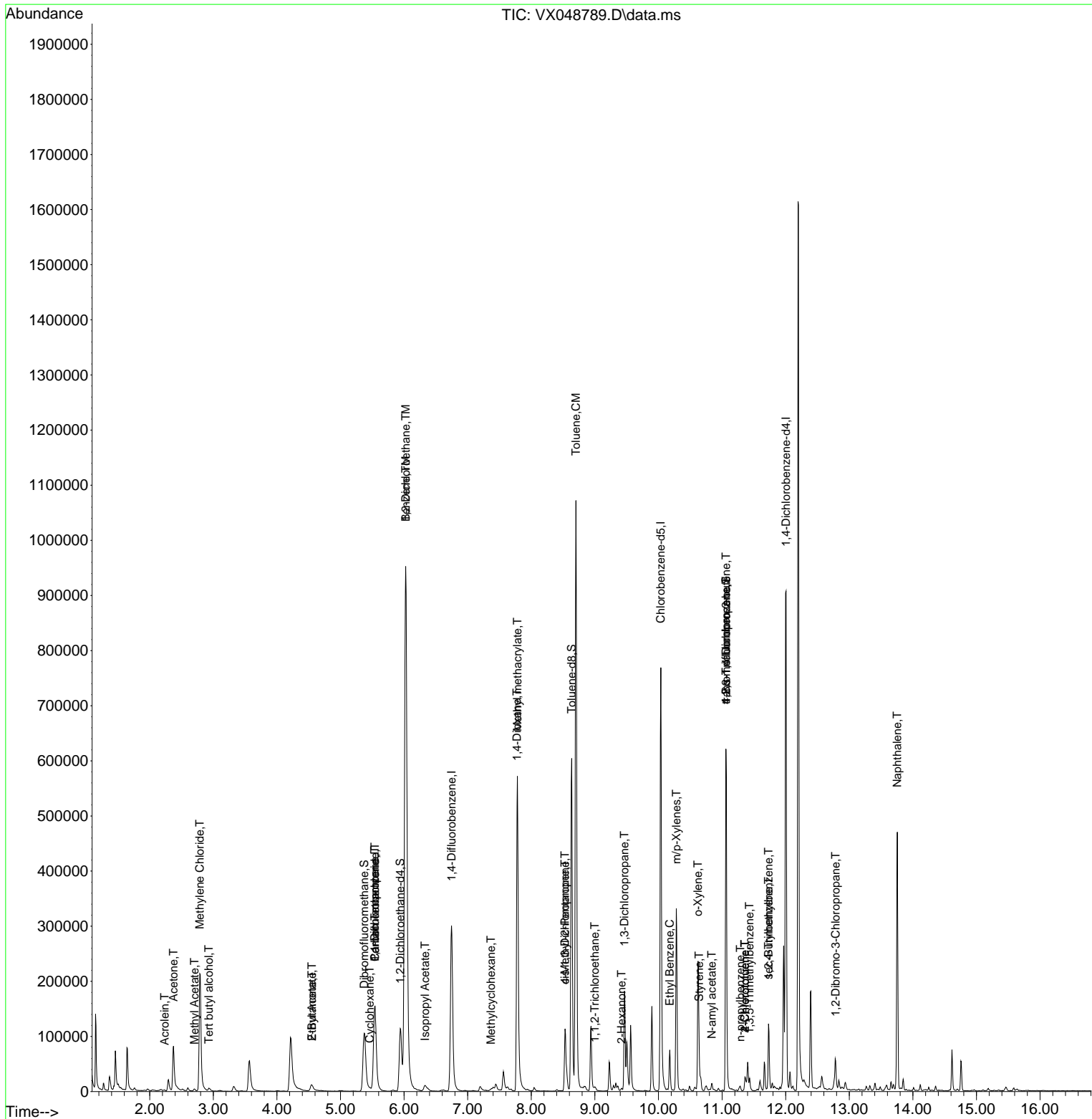
Compound	R.T.	QIon	Response	Conc Units	Dev(Min)
95) Naphthalene	13.756	128	284516	25.050 ug/l	100

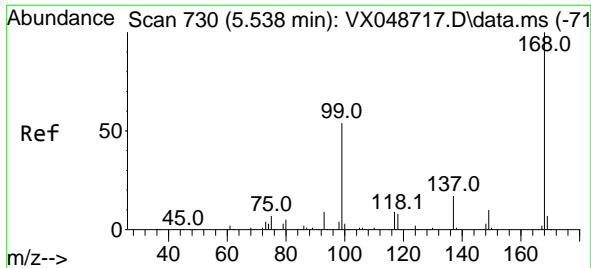
(#) = qualifier out of range (m) = manual integration (+) = signals summed

Data Path : Z:\voasrv\HPCHEM1\MSVOA\_X\Data\VX120925\  
 Data File : VX048789.D  
 Acq On : 09 Dec 2025 16:50  
 Operator : JC/MD  
 Sample : Q3803-13  
 Misc : 5.0mL/MSVOA\_X/WATER  
 ALS Vial : 23 Sample Multiplier: 1

Instrument :  
 MSVOA\_X  
 ClientSampleId :

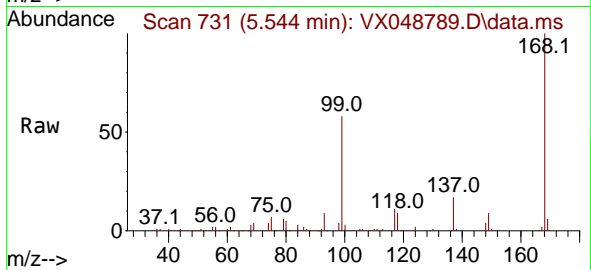
Quant Time: Dec 10 00:27:55 2025  
 Quant Method : Z:\voasrv\HPCHEM1\MSVOA\_X\Method\82X120425W.M  
 Quant Title : SW846 8260  
 QLast Update : Fri Dec 05 03:27:34 2025  
 Response via : Initial Calibration



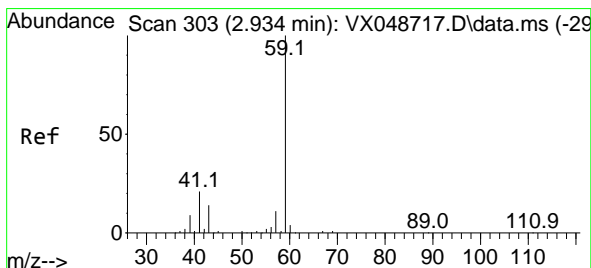
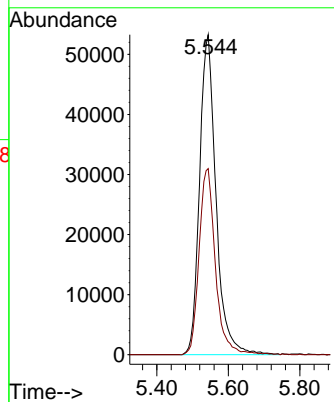
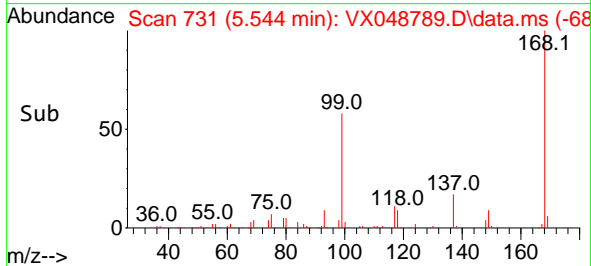


#1  
 Pentafluorobenzene  
 Concen: 50.000 ug/l  
 RT: 5.544 min Scan# 71  
 Delta R.T. 0.006 min  
 Lab File: VX048789.D  
 Acq: 09 Dec 2025 16:50

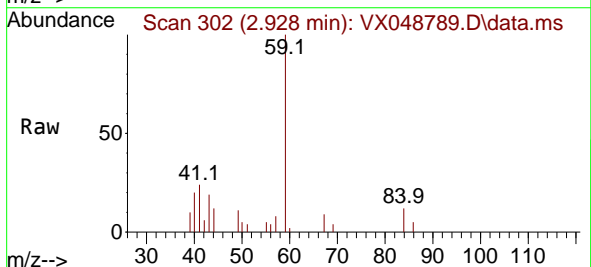
Instrument :  
 MSVOA\_X  
 ClientSampleId :



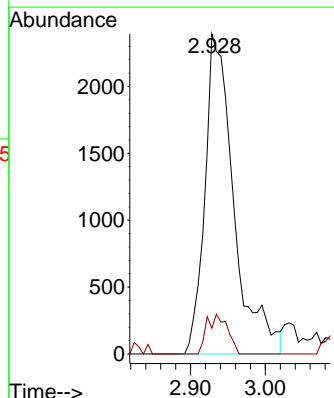
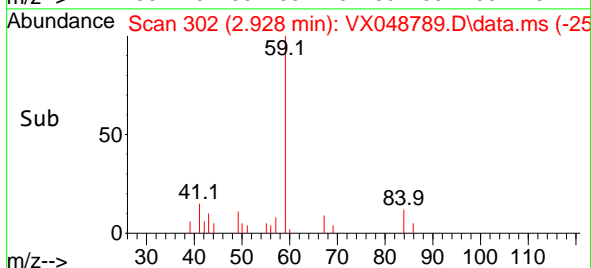
Tgt Ion:168 Resp: 169661  
 Ion Ratio Lower Upper  
 168 100  
 99 58.2 44.2 66.4

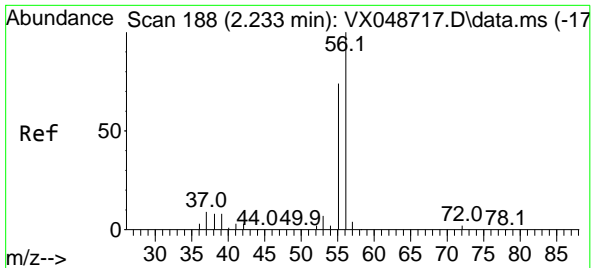


#11  
 Tert butyl alcohol  
 Concen: 17.566 ug/l  
 RT: 2.928 min Scan# 302  
 Delta R.T. -0.006 min  
 Lab File: VX048789.D  
 Acq: 09 Dec 2025 16:50



Tgt Ion: 59 Resp: 6458  
 Ion Ratio Lower Upper  
 59 100  
 57 8.8 8.1 12.1

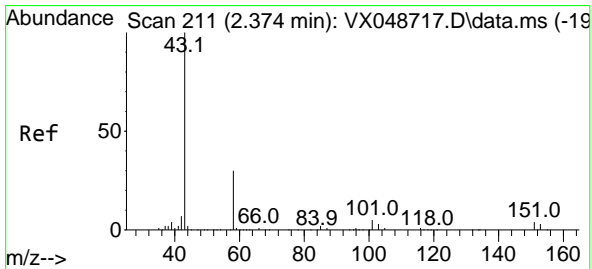
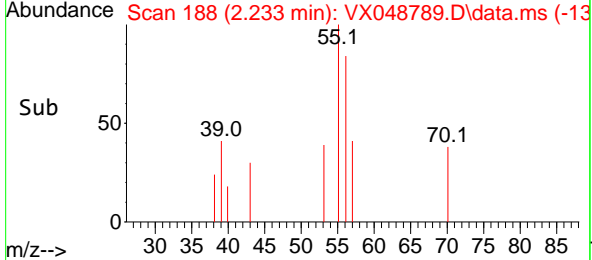
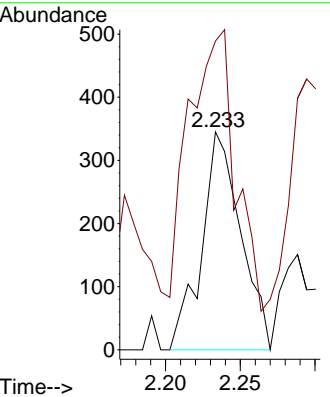
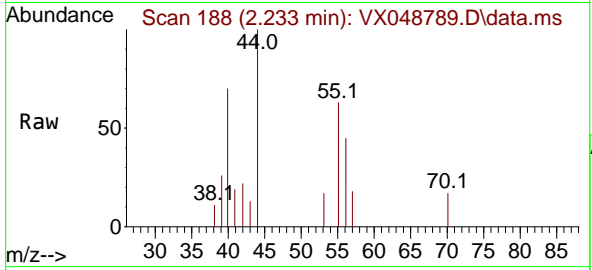




#13  
 Acrolein  
 Concen: 41.660 ug/l  
 RT: 2.233 min Scan# 11  
 Delta R.T. 0.000 min  
 Lab File: VX048789.D  
 Acq: 09 Dec 2025 16:50

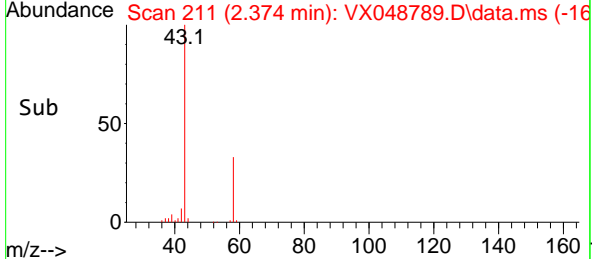
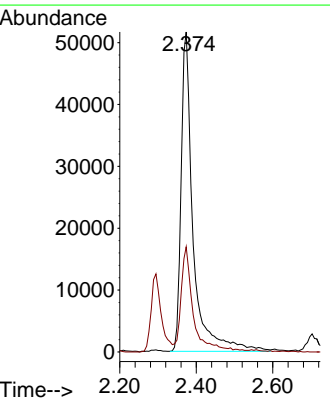
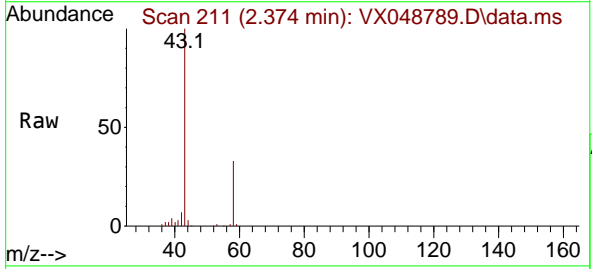
Instrument : MSVOA\_X  
 ClientSampleId :

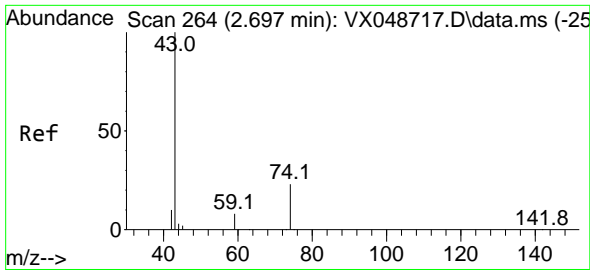
Tgt Ion: 56 Resp: 627  
 Ion Ratio Lower Upper  
 56 100  
 55 188.2 55.8 83.6#



#16  
 Acetone  
 Concen: 128.221 ug/l  
 RT: 2.374 min Scan# 211  
 Delta R.T. 0.000 min  
 Lab File: VX048789.D  
 Acq: 09 Dec 2025 16:50

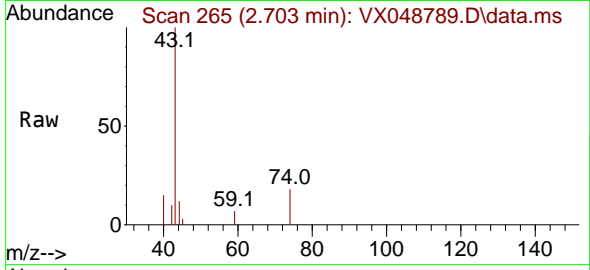
Tgt Ion: 43 Resp: 111776  
 Ion Ratio Lower Upper  
 43 100  
 58 32.5 25.0 37.4



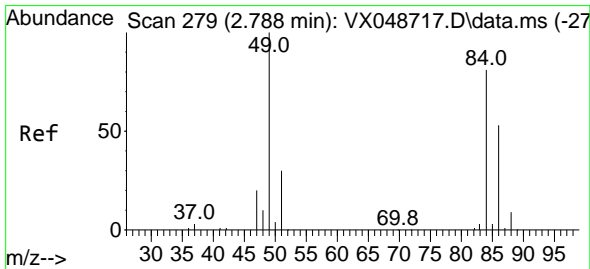
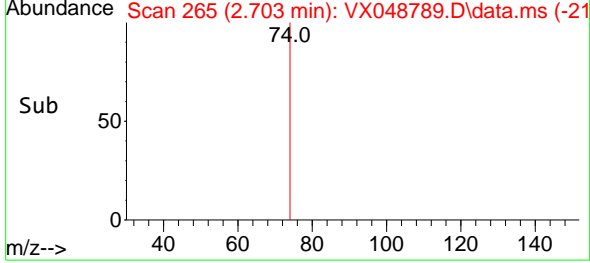
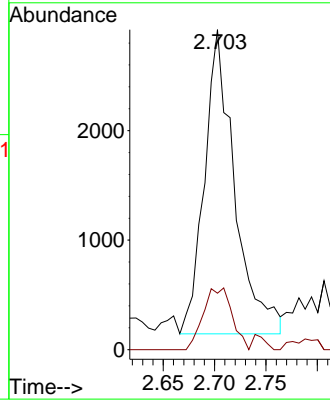


#18  
 Methyl Acetate  
 Concen: 2.313 ug/l  
 RT: 2.703 min Scan# 265  
 Delta R.T. 0.006 min  
 Lab File: VX048789.D  
 Acq: 09 Dec 2025 16:50

Instrument : MSVOA\_X  
 ClientSampleId :

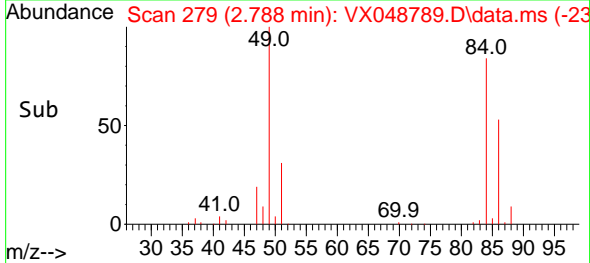
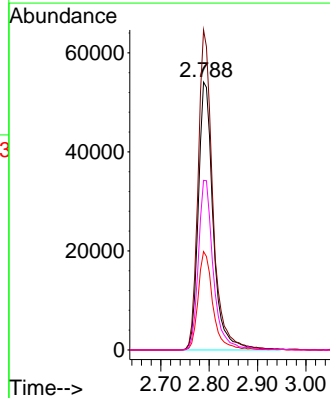
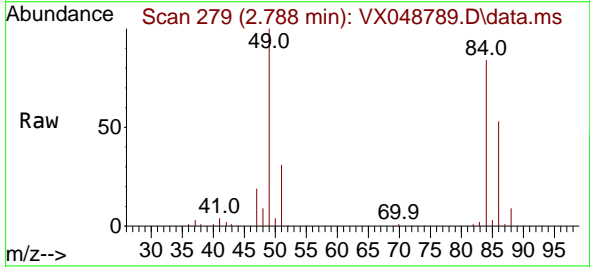


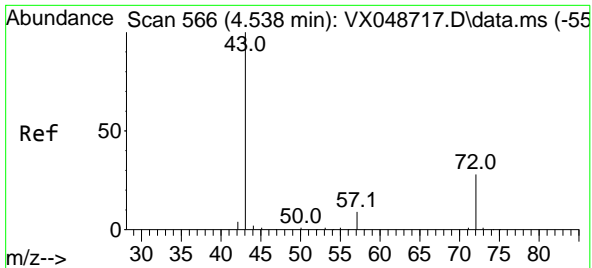
Tgt Ion: 43 Resp: 5673  
 Ion Ratio Lower Upper  
 43 100  
 74 19.3 19.2 28.8



#20  
 Methylene Chloride  
 Concen: 53.009 ug/l  
 RT: 2.788 min Scan# 279  
 Delta R.T. 0.000 min  
 Lab File: VX048789.D  
 Acq: 09 Dec 2025 16:50

Tgt Ion: 84 Resp: 115503  
 Ion Ratio Lower Upper  
 84 100  
 49 119.5 98.7 148.1  
 51 36.8 29.4 44.2  
 86 63.4 52.5 78.7

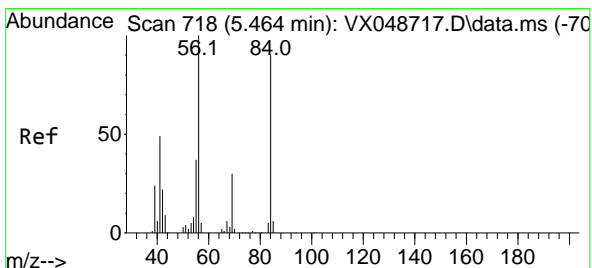
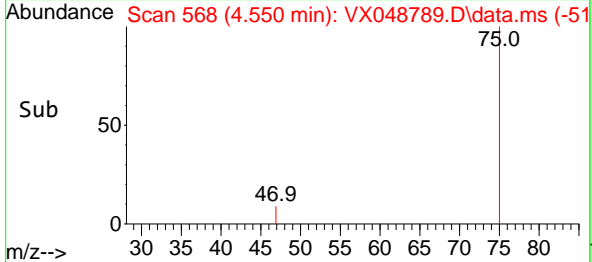
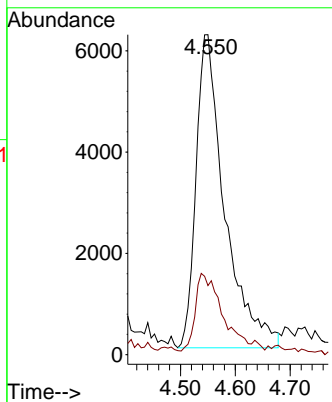
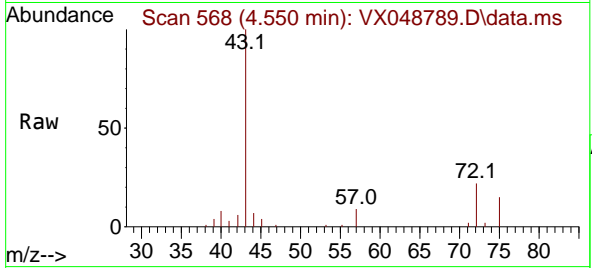




#25  
 2-Butanone  
 Concen: 17.423 ug/l  
 RT: 4.550 min Scan# 50  
 Delta R.T. 0.012 min  
 Lab File: VX048789.D  
 Acq: 09 Dec 2025 16:50

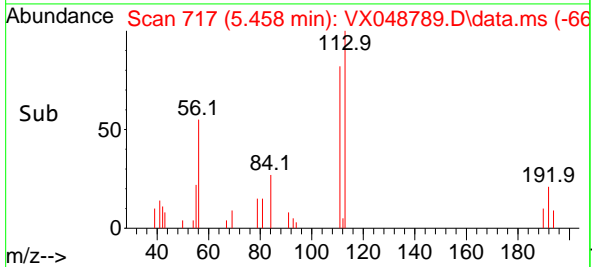
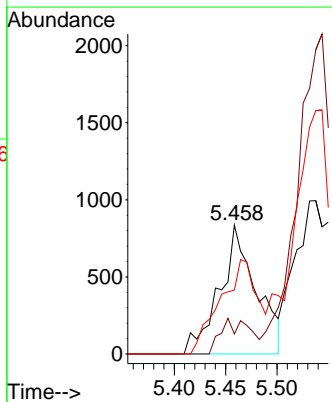
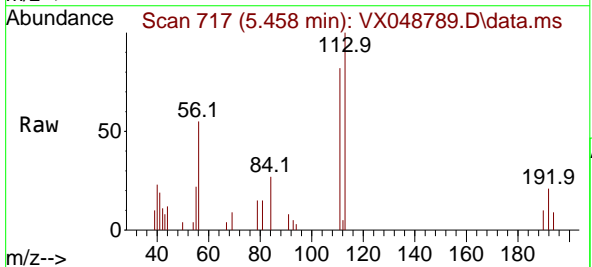
Instrument :  
 MSVOA\_X  
 ClientSampleId :

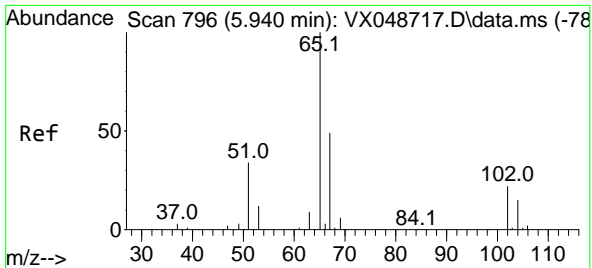
Tgt Ion: 43 Resp: 22417  
 Ion Ratio Lower Upper  
 43 100  
 72 20.8 22.6 34.0#



#31  
 Cyclohexane  
 Concen: 0.672 ug/l  
 RT: 5.458 min Scan# 717  
 Delta R.T. -0.006 min  
 Lab File: VX048789.D  
 Acq: 09 Dec 2025 16:50

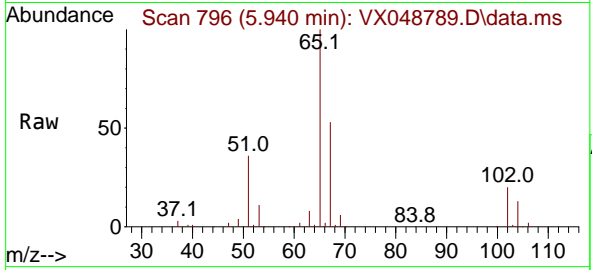
Tgt Ion: 56 Resp: 2069  
 Ion Ratio Lower Upper  
 56 100  
 69 15.5 24.2 36.2#  
 84 49.5 72.1 108.1#



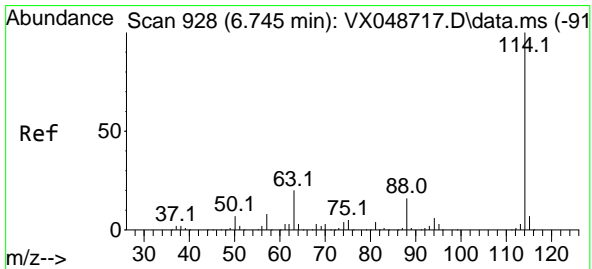
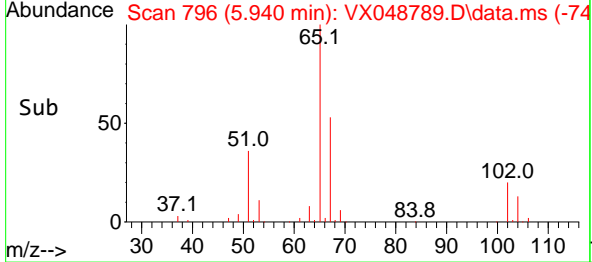
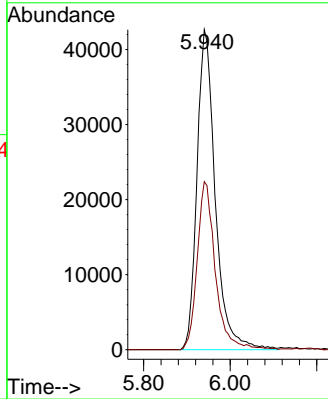


#33  
 1,2-Dichloroethane-d4  
 Concen: 54.897 ug/l  
 RT: 5.940 min Scan# 796  
 Delta R.T. 0.000 min  
 Lab File: VX048789.D  
 Acq: 09 Dec 2025 16:50

Instrument : MSVOA\_X  
 ClientSampleId :

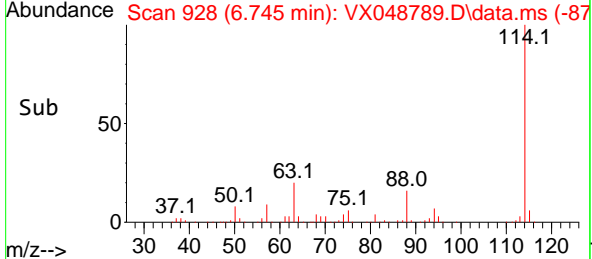
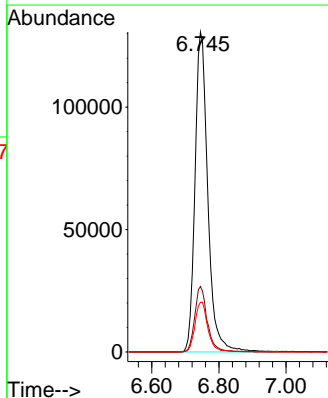
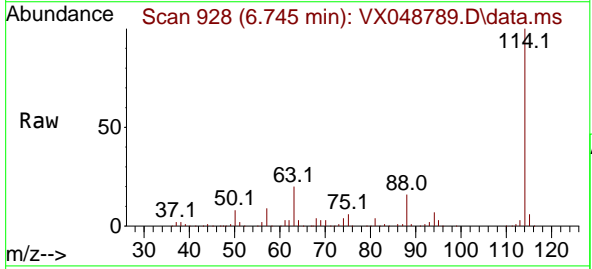


Tgt Ion: 65 Resp: 125010  
 Ion Ratio Lower Upper  
 65 100  
 67 52.2 0.0 107.4

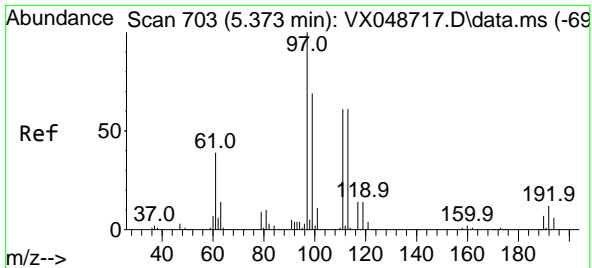


#34  
 1,4-Difluorobenzene  
 Concen: 50.000 ug/l  
 RT: 6.745 min Scan# 928  
 Delta R.T. 0.000 min  
 Lab File: VX048789.D  
 Acq: 09 Dec 2025 16:50

Tgt Ion: 114 Resp: 346552  
 Ion Ratio Lower Upper  
 114 100  
 63 20.4 0.0 39.0  
 88 15.6 0.0 31.8

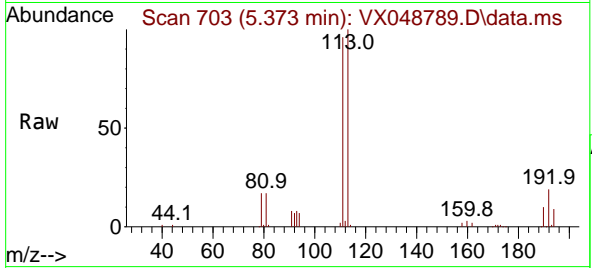




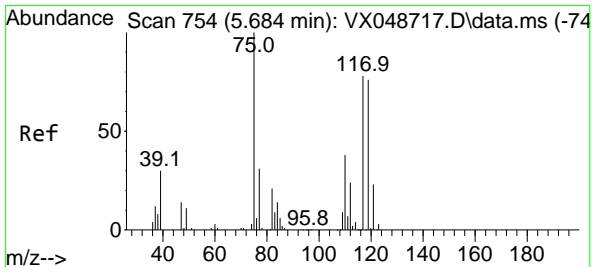
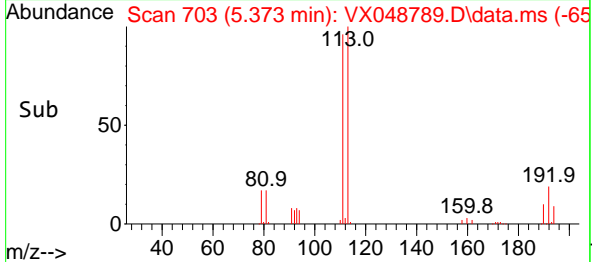
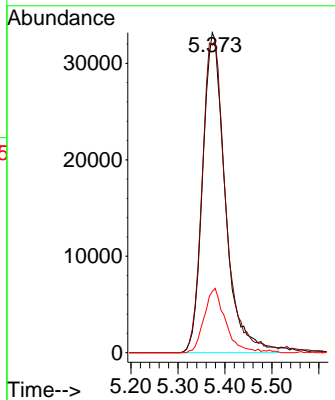


#35  
 Dibromofluoromethane  
 Concen: 46.427 ug/l  
 RT: 5.373 min Scan# 703  
 Delta R.T. 0.000 min  
 Lab File: VX048789.D  
 Acq: 09 Dec 2025 16:50

Instrument : MSVOA\_X  
 ClientSampleId :

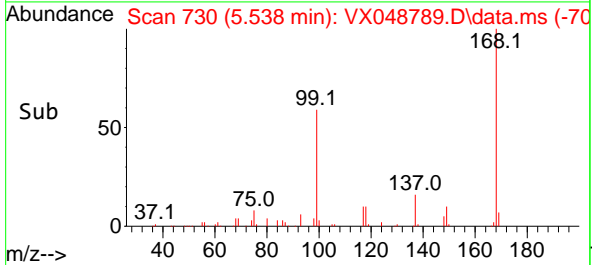
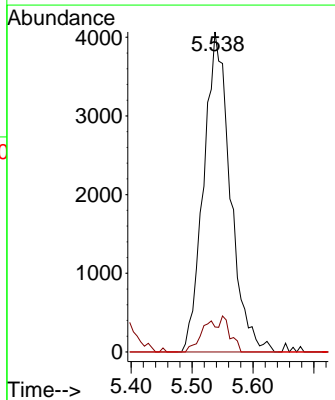
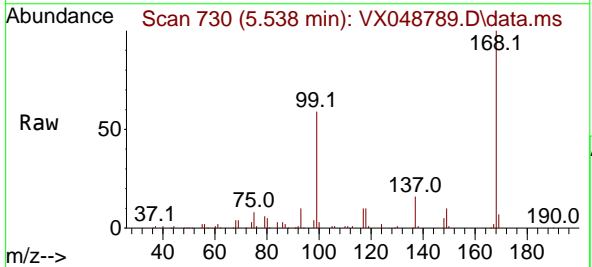


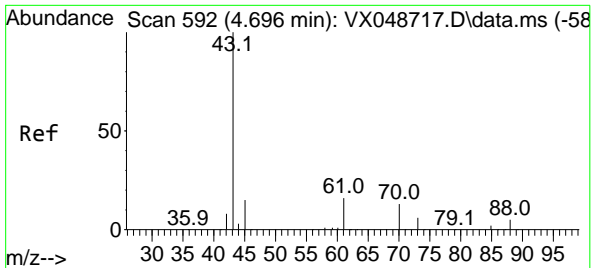
Tgt Ion:113 Resp: 110782  
 Ion Ratio Lower Upper  
 113 100  
 111 101.1 79.5 119.3  
 192 19.1 16.1 24.1



#36  
 1,1-Dichloropropene  
 Concen: 3.782 ug/l  
 RT: 5.538 min Scan# 730  
 Delta R.T. -0.146 min  
 Lab File: VX048789.D  
 Acq: 09 Dec 2025 16:50

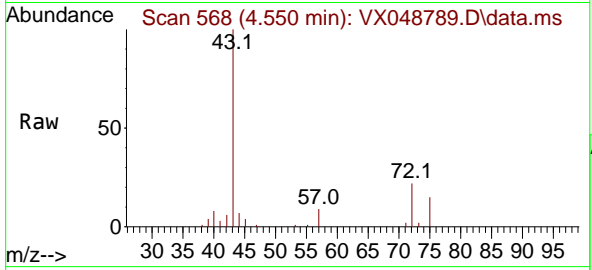
Tgt Ion: 75 Resp: 12361  
 Ion Ratio Lower Upper  
 75 100  
 110 6.4 18.6 55.8#  
 77 0.0 25.3 37.9#





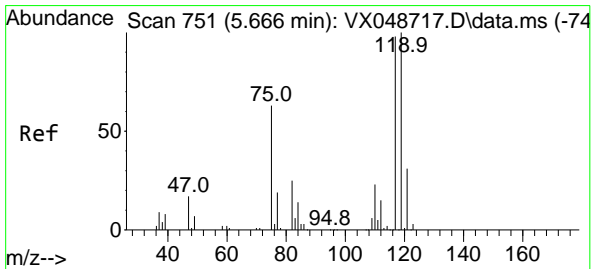
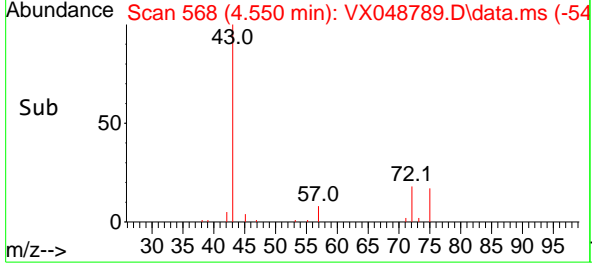
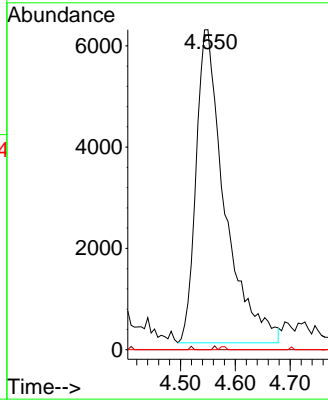
#37  
 Ethyl Acetate  
 Concen: 5.740 ug/l  
 RT: 4.550 min Scan# 50  
 Delta R.T. -0.146 min  
 Lab File: VX048789.D  
 Acq: 09 Dec 2025 16:50

Instrument : MSVOA\_X  
 ClientSampled :



Tgt Ion: 43 Resp: 22417

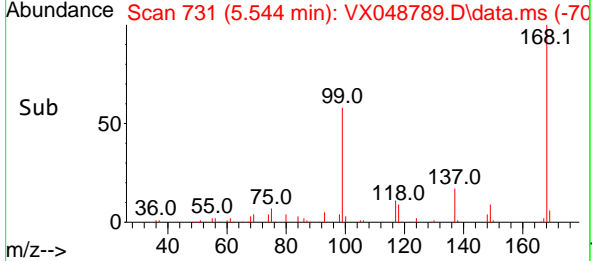
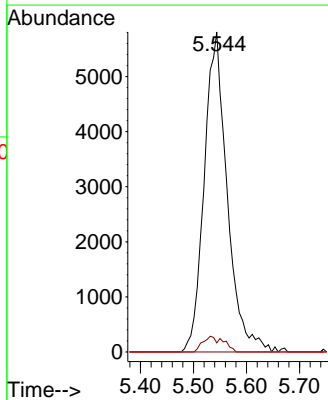
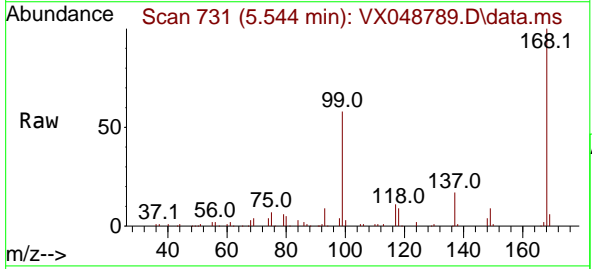
Ion	Ratio	Lower	Upper
43	100		
61	0.1	9.7	14.5#
70	0.0	8.2	12.4#

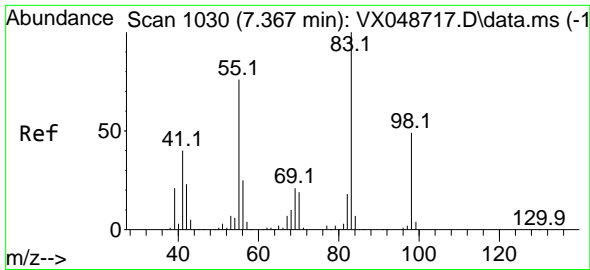


#38  
 Carbon Tetrachloride  
 Concen: 4.716 ug/l  
 RT: 5.544 min Scan# 731  
 Delta R.T. -0.122 min  
 Lab File: VX048789.D  
 Acq: 09 Dec 2025 16:50

Tgt Ion: 117 Resp: 17459

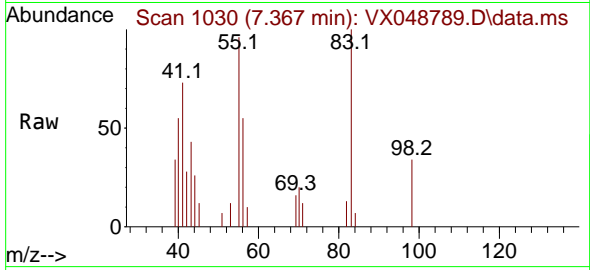
Ion	Ratio	Lower	Upper
117	100		
119	2.8	80.5	120.7#
121	0.0	25.4	38.0#



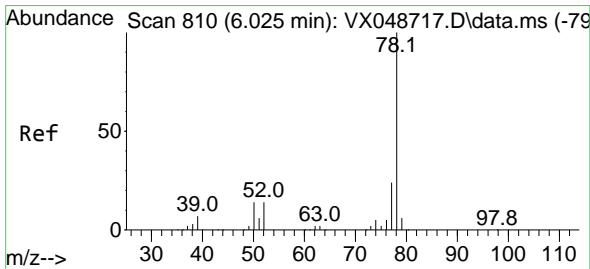
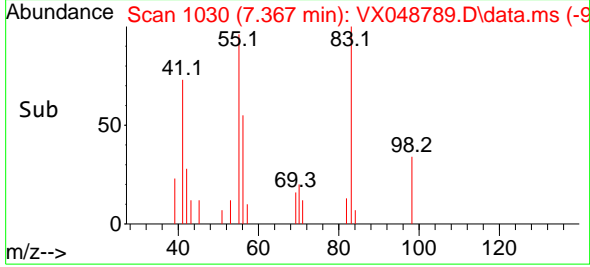
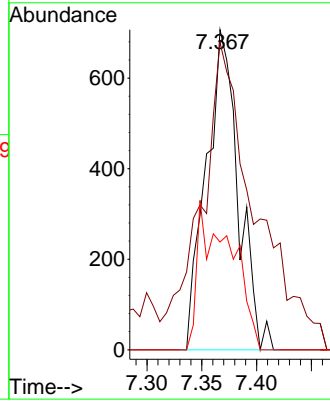


#39  
 Methylcyclohexane  
 Concen: 0.374 ug/l  
 RT: 7.367 min Scan# 10  
 Delta R.T. 0.000 min  
 Lab File: VX048789.D  
 Acq: 09 Dec 2025 16:50

Instrument :  
 MSVOA\_X  
 ClientSampleId :

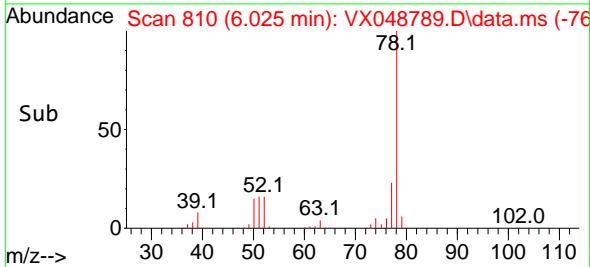
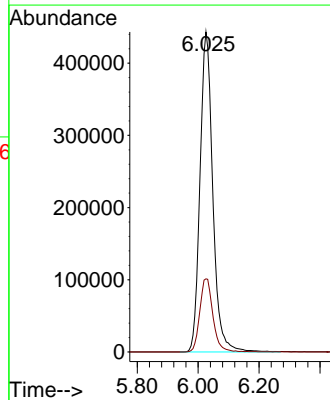
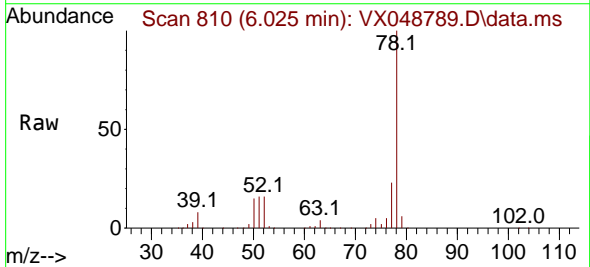


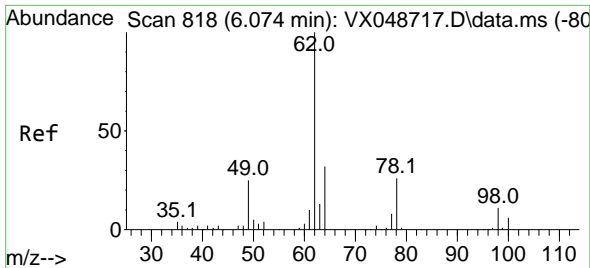
Tgt Ion: 83 Resp: 1446  
 Ion Ratio Lower Upper  
 83 100  
 55 77.4 60.6 90.8  
 98 33.7 39.3 58.9#



#40  
 Benzene  
 Concen: 133.318 ug/l  
 RT: 6.025 min Scan# 810  
 Delta R.T. 0.000 min  
 Lab File: VX048789.D  
 Acq: 09 Dec 2025 16:50

Tgt Ion: 78 Resp: 1291628  
 Ion Ratio Lower Upper  
 78 100  
 77 22.9 18.8 28.2

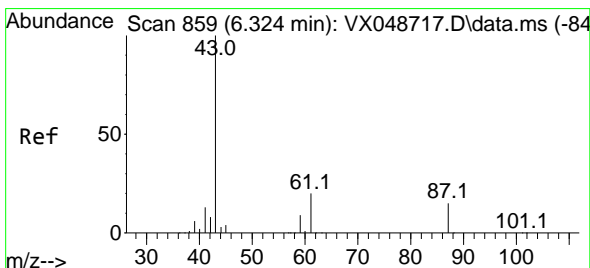
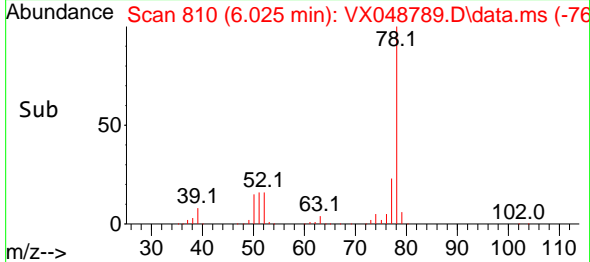
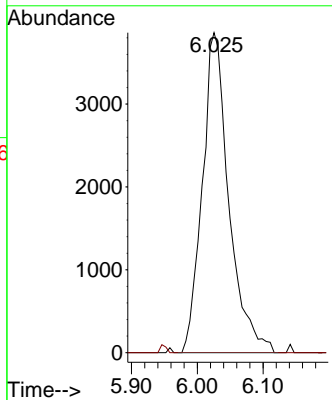
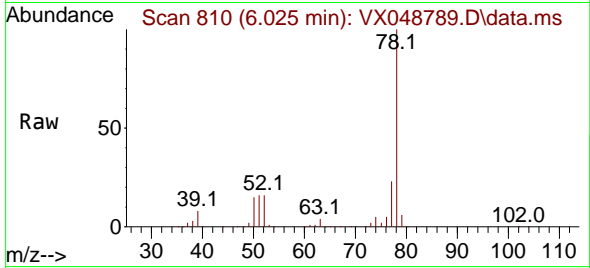




#42  
 1,2-Dichloroethane  
 Concen: 3.160 ug/l  
 RT: 6.025 min Scan# 81  
 Delta R.T. -0.049 min  
 Lab File: VX048789.D  
 Acq: 09 Dec 2025 16:50

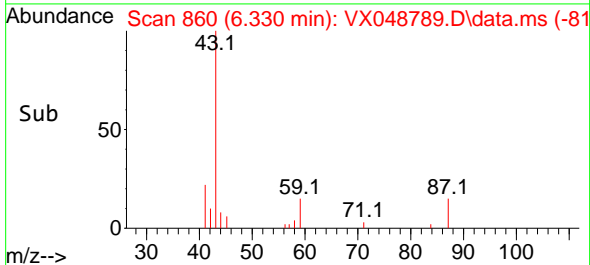
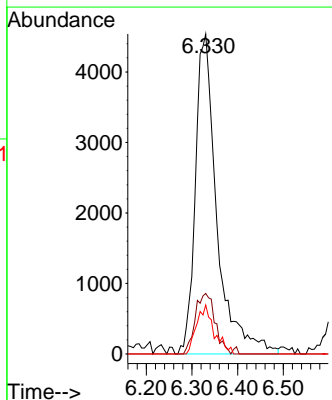
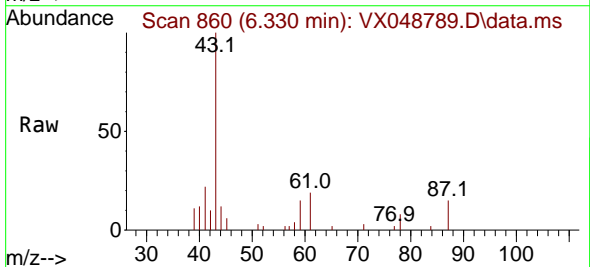
Instrument :  
 MSVOA\_X  
 ClientSampleId :

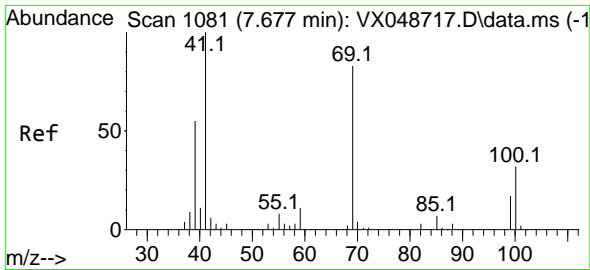
Tgt Ion: 62 Resp: 10835  
 Ion Ratio Lower Upper  
 62 100  
 98 0.0 0.0 20.2



#43  
 Isopropyl Acetate  
 Concen: 2.511 ug/l  
 RT: 6.330 min Scan# 860  
 Delta R.T. 0.006 min  
 Lab File: VX048789.D  
 Acq: 09 Dec 2025 16:50

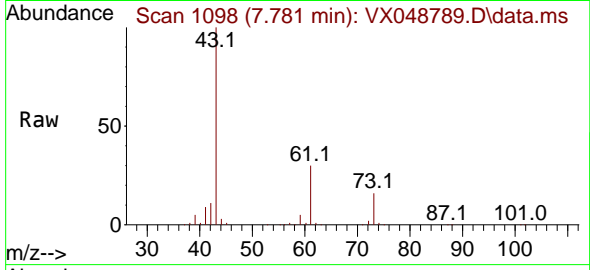
Tgt Ion: 43 Resp: 14848  
 Ion Ratio Lower Upper  
 43 100  
 61 17.4 16.8 25.2  
 87 12.5 11.8 17.6



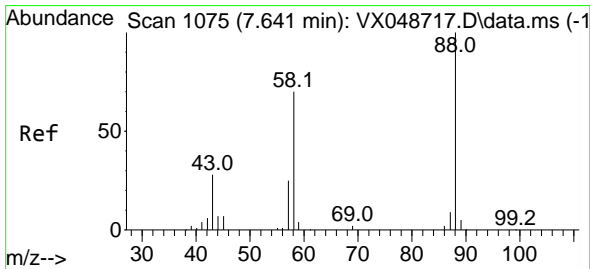
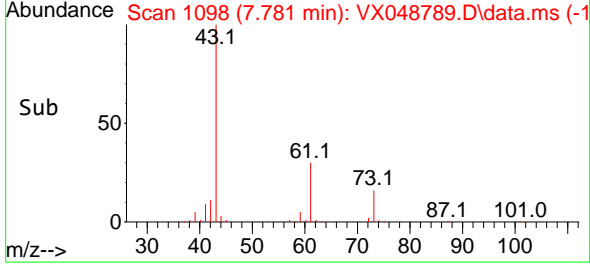
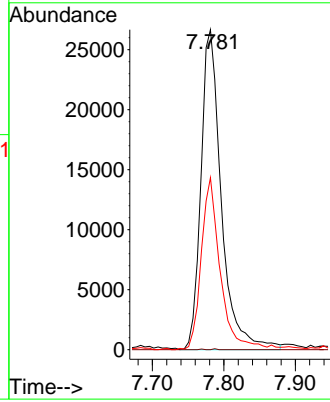


#48  
 Methyl methacrylate  
 Concen: 17.760 ug/l  
 RT: 7.781 min Scan# 1098  
 Delta R.T. 0.104 min  
 Lab File: VX048789.D  
 Acq: 09 Dec 2025 16:50

Instrument : MSVOA\_X  
 ClientSampleId :

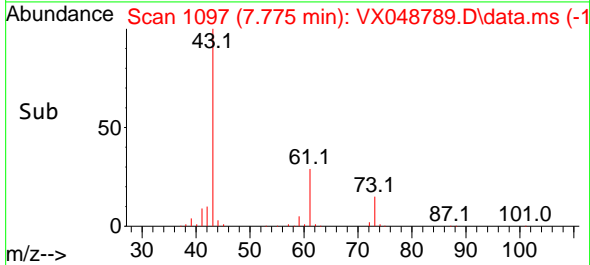
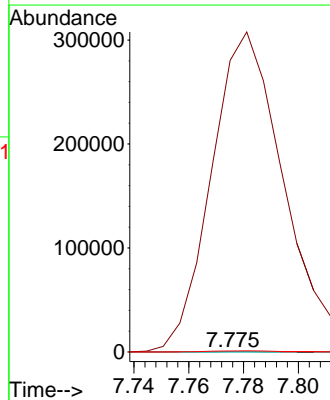
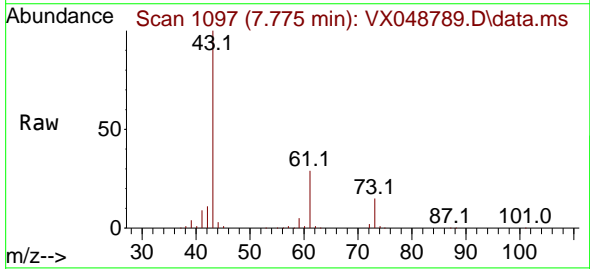


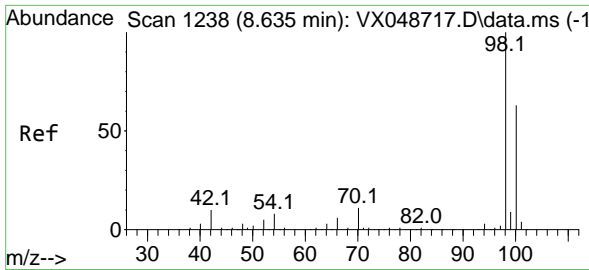
Tgt Ion: 41 Resp: 52828  
 Ion Ratio Lower Upper  
 41 100  
 69 0.1 68.5 102.7#  
 39 49.7 43.5 65.3



#49  
 1,4-Dioxane  
 Concen: 2.787 ug/l  
 RT: 7.775 min Scan# 1097  
 Delta R.T. 0.134 min  
 Lab File: VX048789.D  
 Acq: 09 Dec 2025 16:50

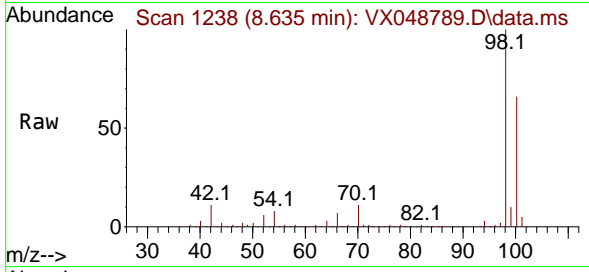
Tgt Ion: 88 Resp: 114  
 Ion Ratio Lower Upper  
 88 100  
 43 525529.8 28.6 43.0#  
 58 1986.0 58.0 87.0#



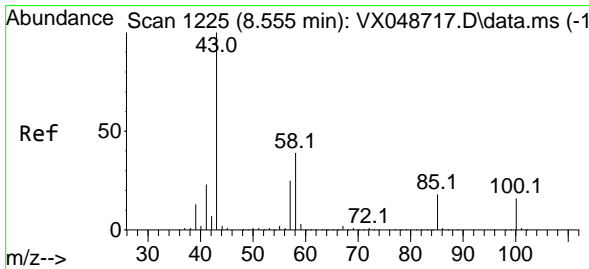
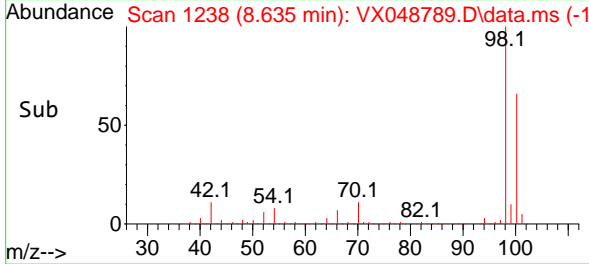
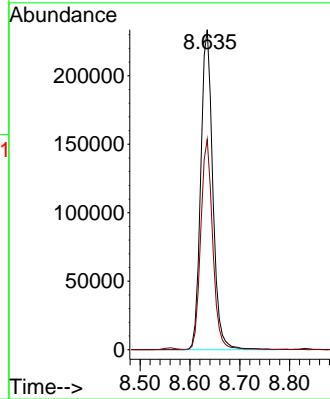


#50  
 Toluene-d8  
 Concen: 46.795 ug/l  
 RT: 8.635 min Scan# 11  
 Delta R.T. 0.000 min  
 Lab File: VX048789.D  
 Acq: 09 Dec 2025 16:50

Instrument :  
 MSVOA\_X  
 ClientSampleId :

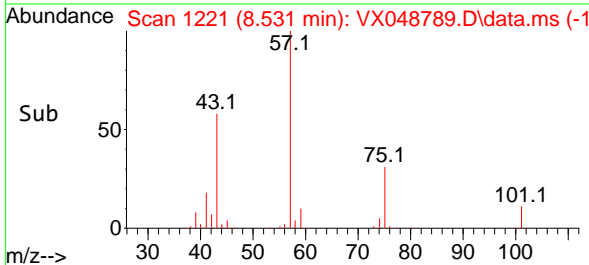
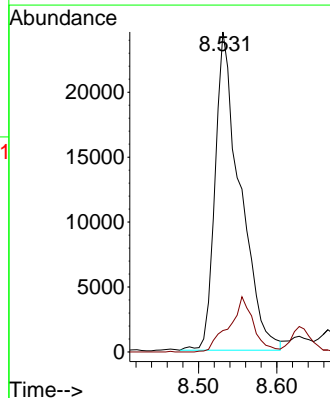
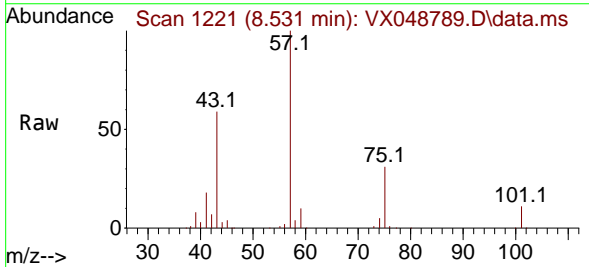


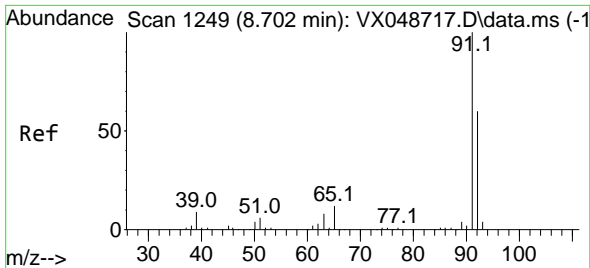
Tgt Ion: 98 Resp: 391399  
 Ion Ratio Lower Upper  
 98 100  
 100 65.0 53.4 80.0



#51  
 4-Methyl-2-Pentanone  
 Concen: 14.798 ug/l  
 RT: 8.531 min Scan# 1221  
 Delta R.T. -0.024 min  
 Lab File: VX048789.D  
 Acq: 09 Dec 2025 16:50

Tgt Ion: 43 Resp: 54314  
 Ion Ratio Lower Upper  
 43 100  
 58 0.0 32.2 48.4#

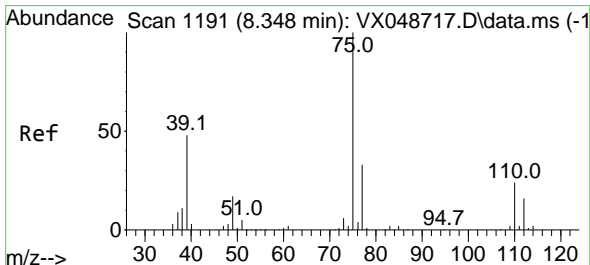
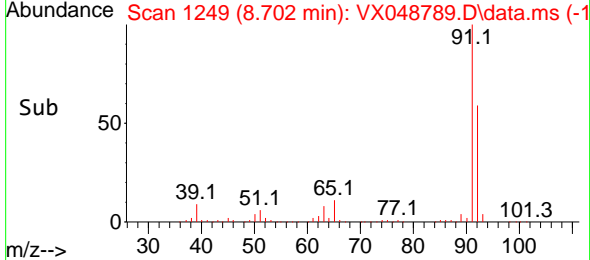
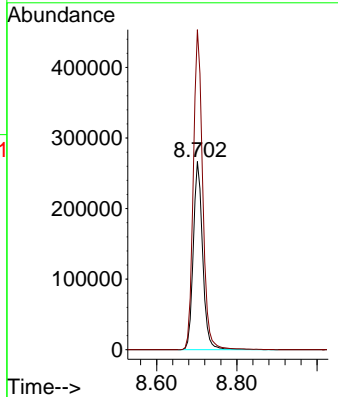
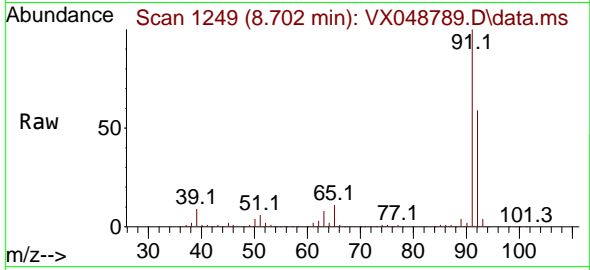




#52  
 Toluene  
 Concen: 73.695 ug/l  
 RT: 8.702 min Scan# 11  
 Delta R.T. 0.000 min  
 Lab File: VX048789.D  
 Acq: 09 Dec 2025 16:50

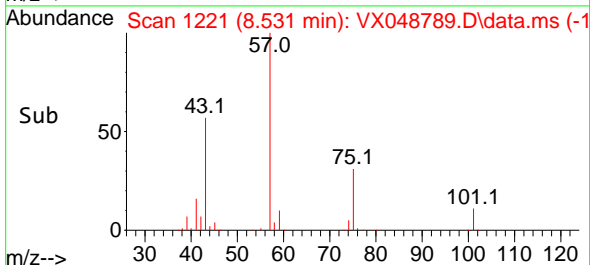
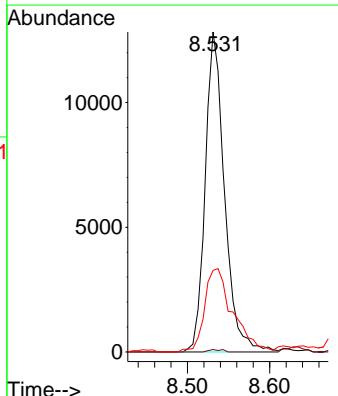
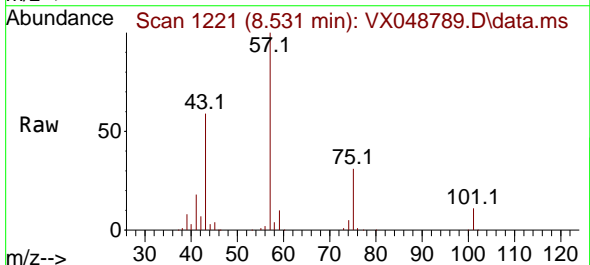
Instrument : MSVOA\_X  
 ClientSampleId :

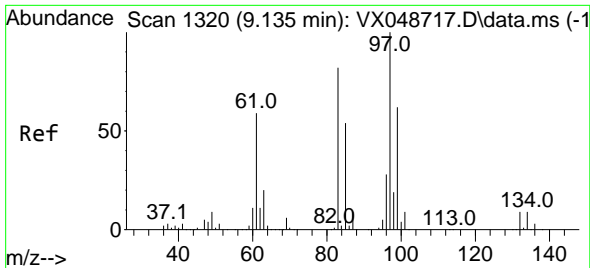
Tgt Ion: 92 Resp: 430538  
 Ion Ratio Lower Upper  
 92 100  
 91 170.4 136.3 204.5



#54  
 cis-1,3-Dichloropropene  
 Concen: 5.354 ug/l  
 RT: 8.531 min Scan# 1221  
 Delta R.T. 0.183 min  
 Lab File: VX048789.D  
 Acq: 09 Dec 2025 16:50

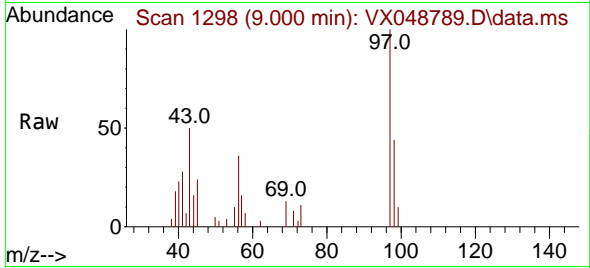
Tgt Ion: 75 Resp: 20960  
 Ion Ratio Lower Upper  
 75 100  
 77 0.8 26.1 39.1#  
 39 25.5 38.2 57.4#





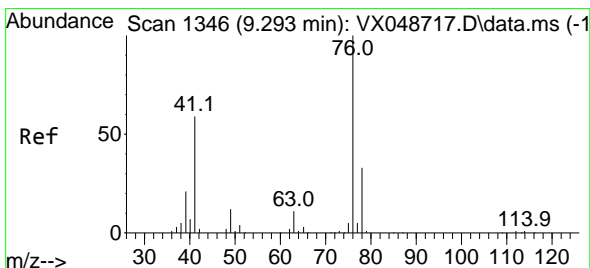
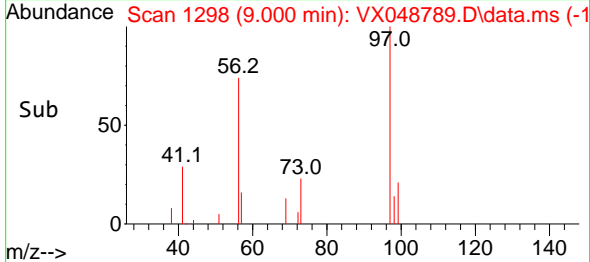
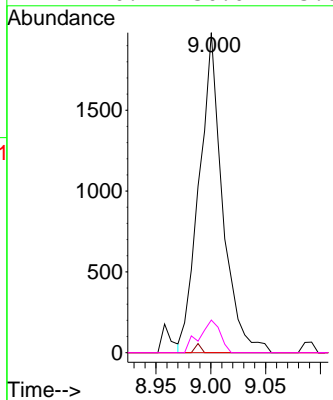
#55  
 1,1,2-Trichloroethane  
 Concen: 1.254 ug/l  
 RT: 9.000 min Scan# 11  
 Delta R.T. -0.134 min  
 Lab File: VX048789.D  
 Acq: 09 Dec 2025 16:50

Instrument :  
 MSVOA\_X  
 ClientSampleId :



Tgt Ion: 97 Resp: 2948

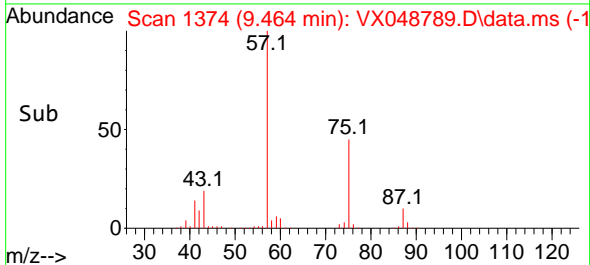
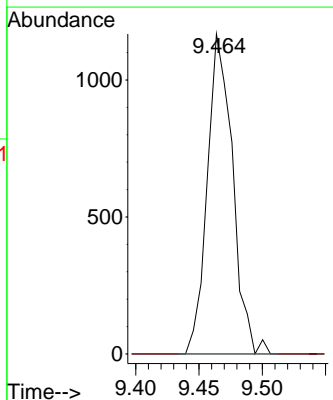
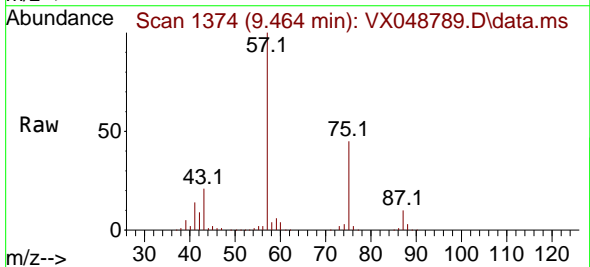
Ion	Ratio	Lower	Upper
97	100		
83	0.0	66.0	99.0#
85	0.0	43.2	64.8#
99	10.2	50.0	75.0#



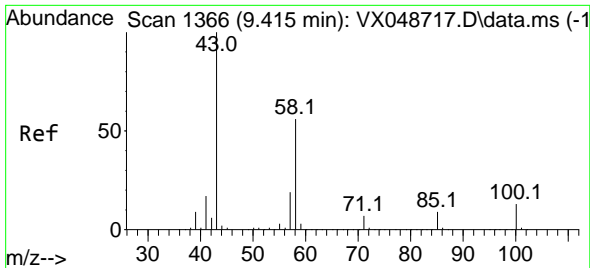
#57  
 1,3-Dichloropropane  
 Concen: 0.415 ug/l  
 RT: 9.464 min Scan# 1374  
 Delta R.T. 0.171 min  
 Lab File: VX048789.D  
 Acq: 09 Dec 2025 16:50

Tgt Ion: 76 Resp: 1622

Ion	Ratio	Lower	Upper
76	100		
78	0.0	26.0	39.0#



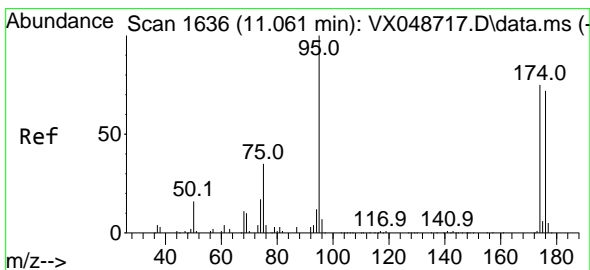
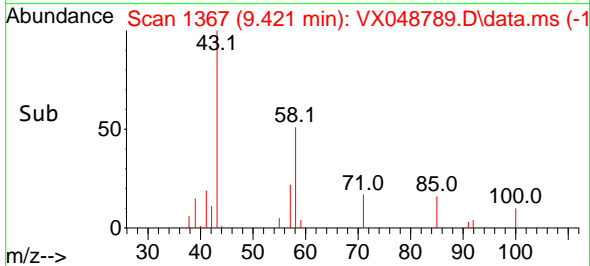
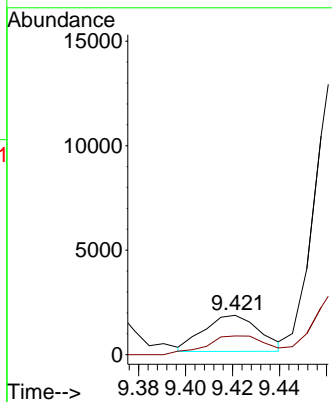
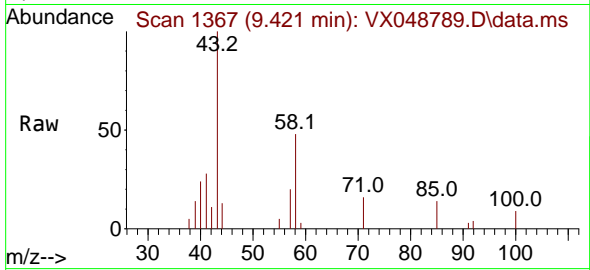




#59  
 2-Hexanone  
 Concen: 1.108 ug/l  
 RT: 9.421 min Scan# 1367  
 Delta R.T. 0.006 min  
 Lab File: VX048789.D  
 Acq: 09 Dec 2025 16:50

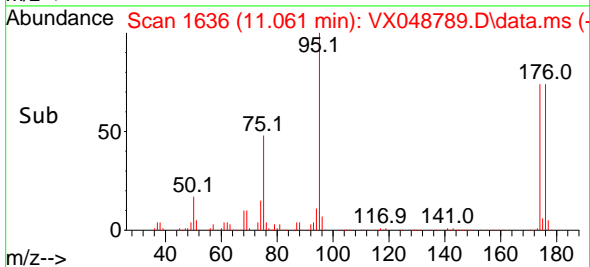
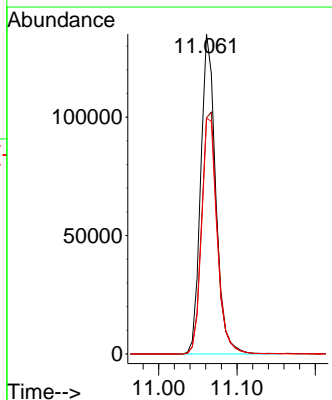
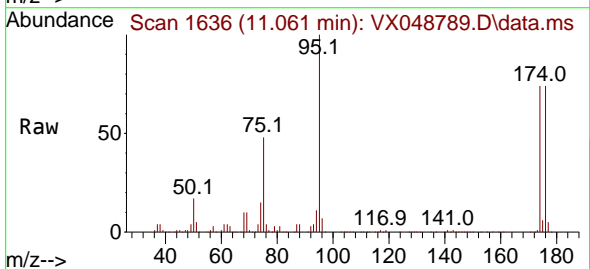
Instrument : MSVOA\_X  
 ClientSampleId :

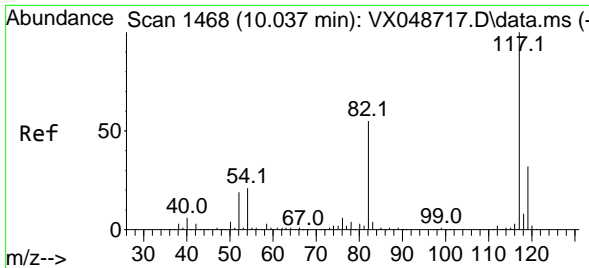
Tgt Ion: 43 Resp: 2855  
 Ion Ratio Lower Upper  
 43 100  
 58 55.6 27.8 83.4



#62  
 4-Bromofluorobenzene  
 Concen: 62.031 ug/l  
 RT: 11.061 min Scan# 1636  
 Delta R.T. 0.000 min  
 Lab File: VX048789.D  
 Acq: 09 Dec 2025 16:50

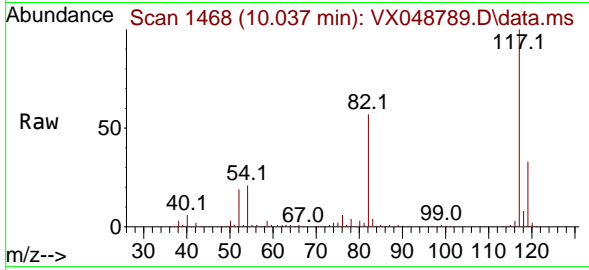
Tgt Ion: 95 Resp: 178911  
 Ion Ratio Lower Upper  
 95 100  
 174 79.4 0.0 157.8  
 176 76.5 0.0 154.0





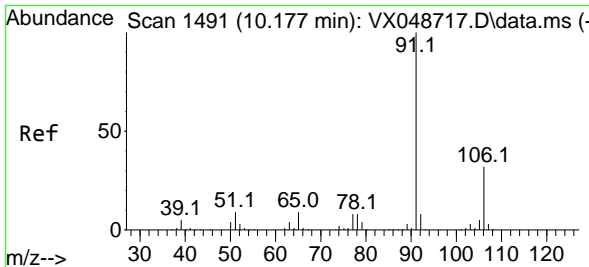
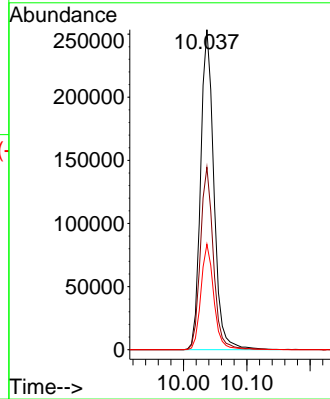
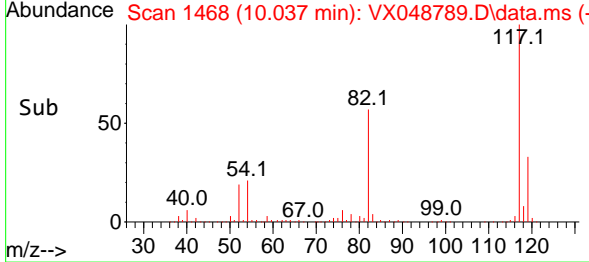
#63  
 Chlorobenzene-d5  
 Concen: 50.000 ug/l  
 RT: 10.037 min Scan# 1468  
 Delta R.T. 0.000 min  
 Lab File: VX048789.D  
 Acq: 09 Dec 2025 16:50

Instrument : MSVOA\_X  
 ClientSampleId :

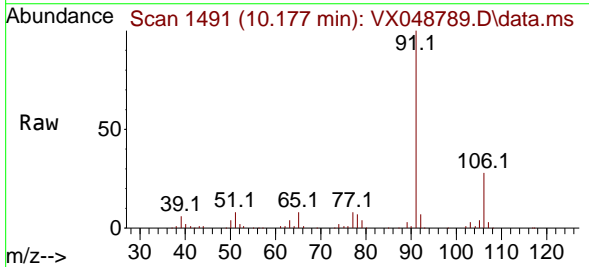


Tgt Ion:117 Resp: 370535

Ion	Ratio	Lower	Upper
117	100		
82	57.0	44.1	66.1
119	33.0	25.2	37.8

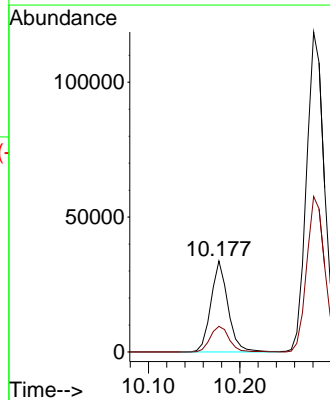
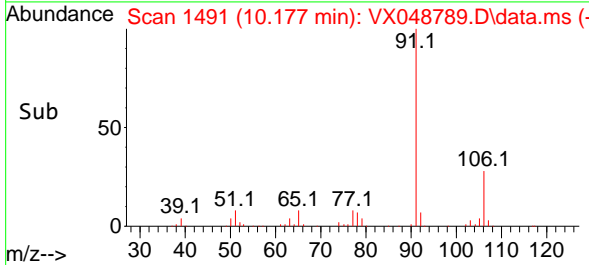


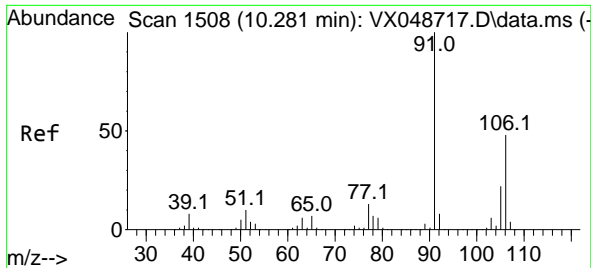
#67  
 Ethyl Benzene  
 Concen: 3.303 ug/l  
 RT: 10.177 min Scan# 1491  
 Delta R.T. 0.000 min  
 Lab File: VX048789.D  
 Acq: 09 Dec 2025 16:50



Tgt Ion: 91 Resp: 43720

Ion	Ratio	Lower	Upper
91	100		
106	28.1	25.3	37.9

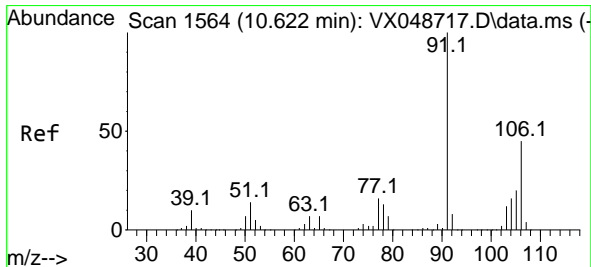
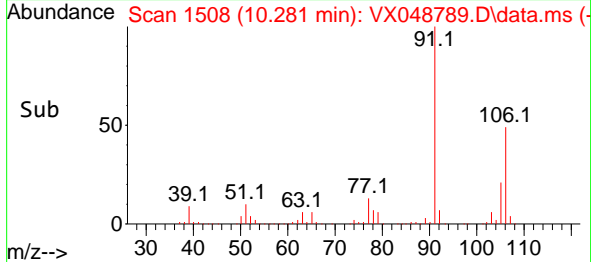
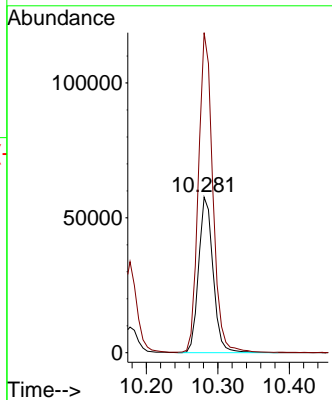
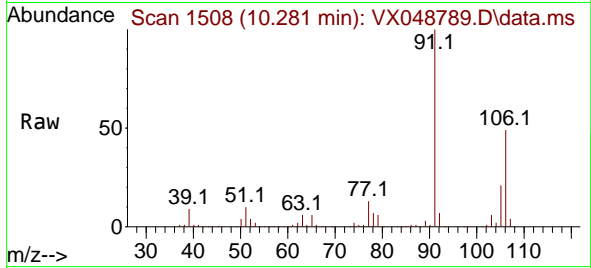




#68  
 m/p-Xylenes  
 Concen: 15.698 ug/l  
 RT: 10.281 min Scan# 11  
 Delta R.T. 0.000 min  
 Lab File: VX048789.D  
 Acq: 09 Dec 2025 16:50

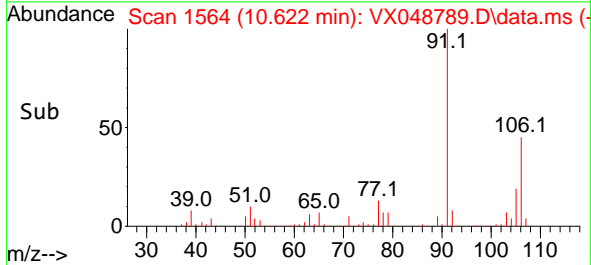
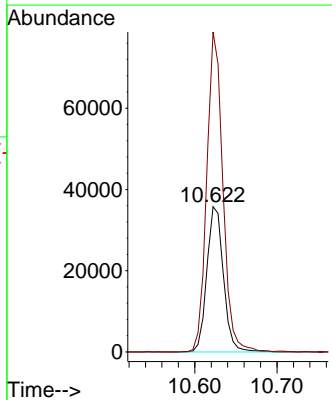
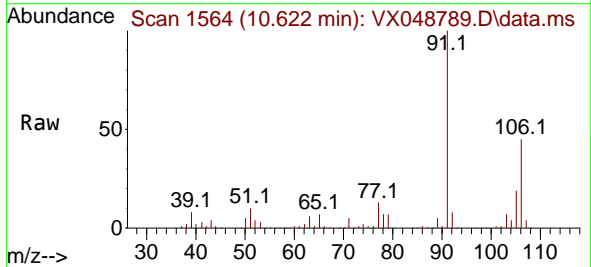
Instrument :  
 MSVOA\_X  
 ClientSampleId :

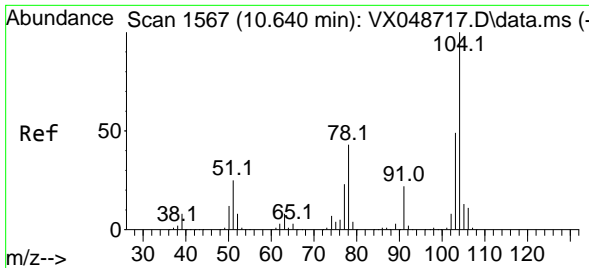
Tgt Ion:106 Resp: 80930  
 Ion Ratio Lower Upper  
 106 100  
 91 203.9 164.2 246.4



#69  
 o-Xylene  
 Concen: 10.362 ug/l  
 RT: 10.622 min Scan# 1564  
 Delta R.T. 0.000 min  
 Lab File: VX048789.D  
 Acq: 09 Dec 2025 16:50

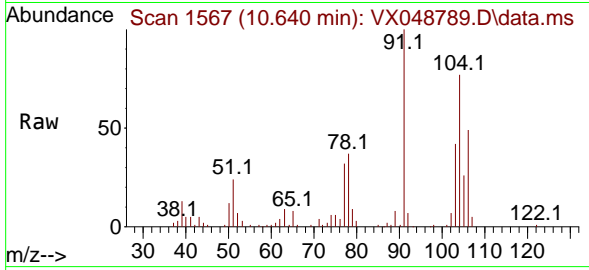
Tgt Ion:106 Resp: 50059  
 Ion Ratio Lower Upper  
 106 100  
 91 214.6 108.1 324.3



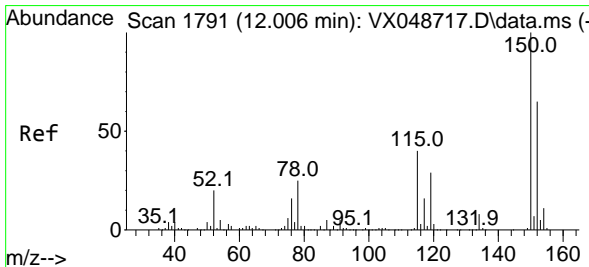
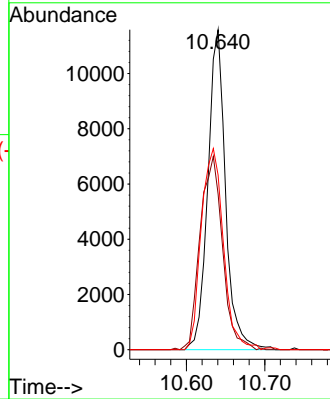
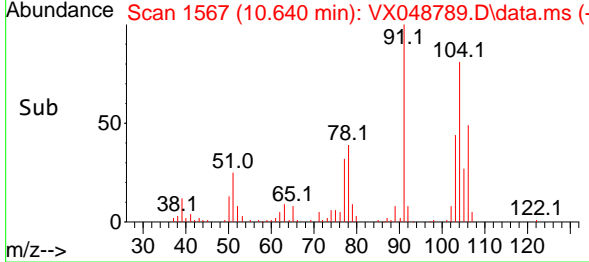


#70  
 Styrene  
 Concen: 2.196 ug/l  
 RT: 10.640 min Scan# 11  
 Delta R.T. 0.000 min  
 Lab File: VX048789.D  
 Acq: 09 Dec 2025 16:50

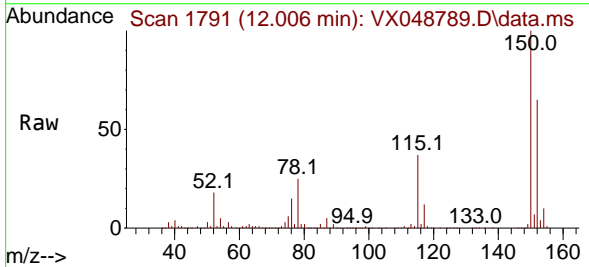
Instrument :  
 MSVOA\_X  
 ClientSampleId :



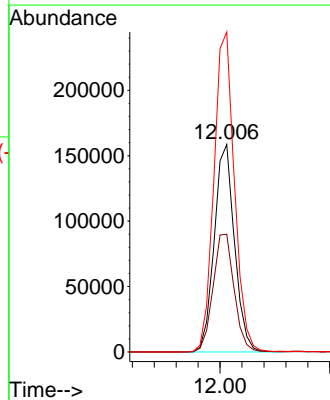
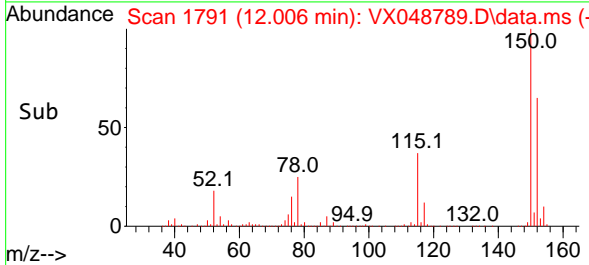
Tgt Ion:104 Resp: 18216  
 Ion Ratio Lower Upper  
 104 100  
 78 76.4 40.6 60.8#  
 103 78.5 43.4 65.2#

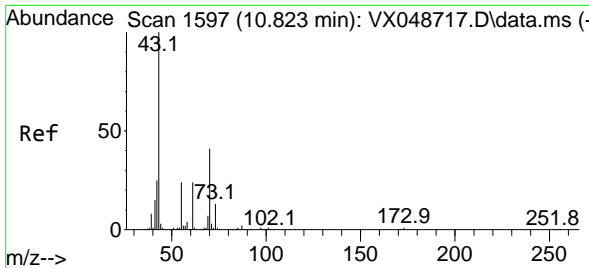


#72  
 1,4-Dichlorobenzene-d4  
 Concen: 50.000 ug/l  
 RT: 12.006 min Scan# 1791  
 Delta R.T. 0.000 min  
 Lab File: VX048789.D  
 Acq: 09 Dec 2025 16:50



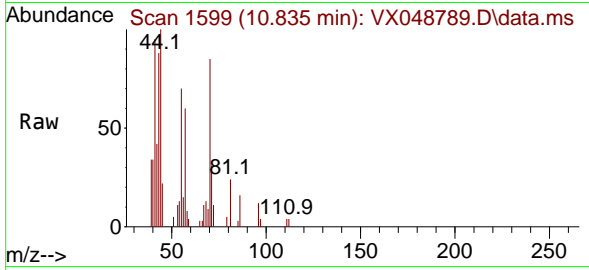
Tgt Ion:152 Resp: 203628  
 Ion Ratio Lower Upper  
 152 100  
 115 59.3 42.1 126.4  
 150 156.6 0.0 347.8





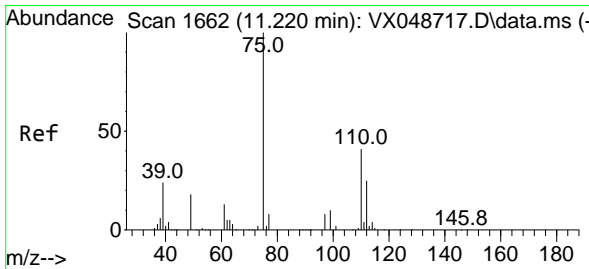
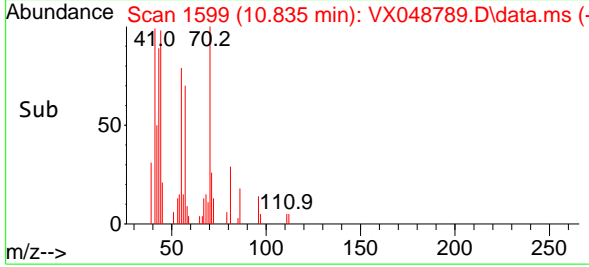
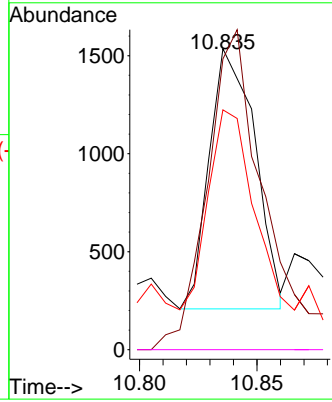
#74  
 N-amy1 acetate  
 Concen: 0.302 ug/l  
 RT: 10.835 min Scan# 1599  
 Delta R.T. 0.012 min  
 Lab File: VX048789.D  
 Acq: 09 Dec 2025 16:50

Instrument : MSVOA\_X  
 ClientSampleId :



Tgt Ion: 43 Resp: 1800

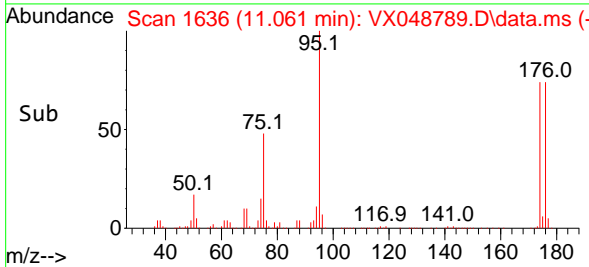
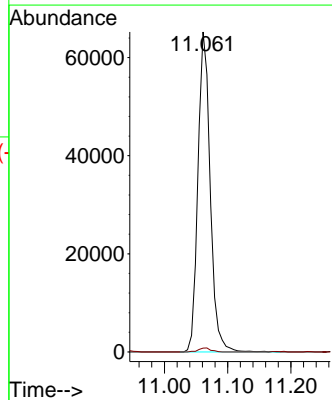
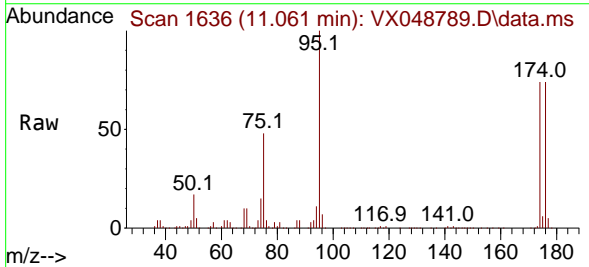
Ion	Ratio	Lower	Upper
43	100		
70	154.3	33.9	50.9#
55	76.8	19.1	28.7#
61	0.0	19.0	28.6#

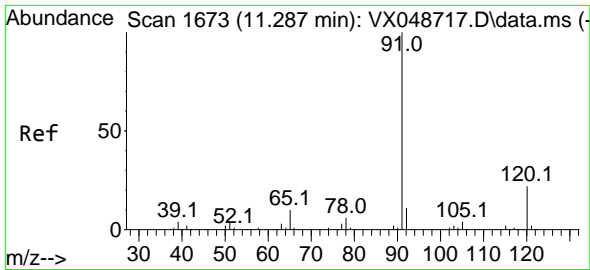


#76  
 1,2,3-Trichloropropane  
 Concen: 23.257 ug/l  
 RT: 11.061 min Scan# 1636  
 Delta R.T. -0.158 min  
 Lab File: VX048789.D  
 Acq: 09 Dec 2025 16:50

Tgt Ion: 75 Resp: 88205

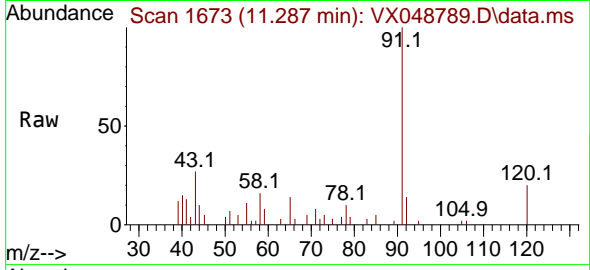
Ion	Ratio	Lower	Upper
75	100		
77	1.3	24.3	73.0#



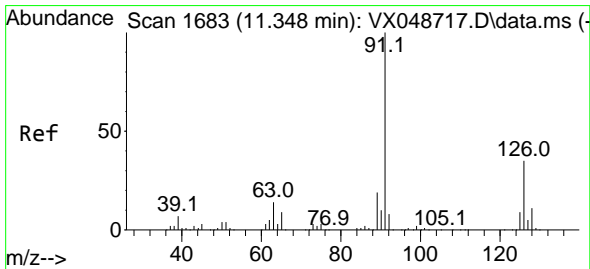
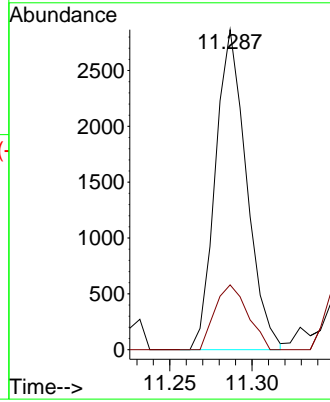
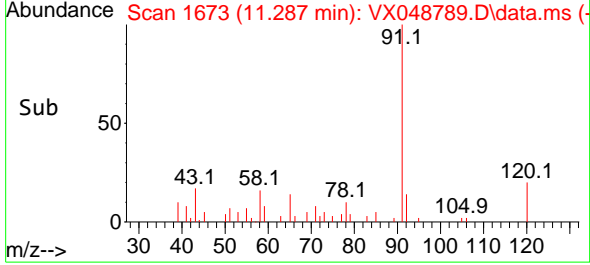


#78  
 n-propylbenzene  
 Concen: 0.237 ug/l  
 RT: 11.287 min Scan# 1673  
 Delta R.T. 0.000 min  
 Lab File: VX048789.D  
 Acq: 09 Dec 2025 16:50

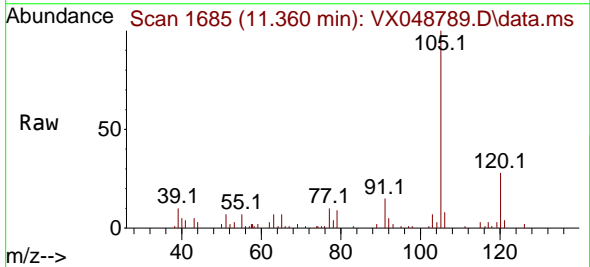
Instrument :  
 MSVOA\_X  
 ClientSampleId :



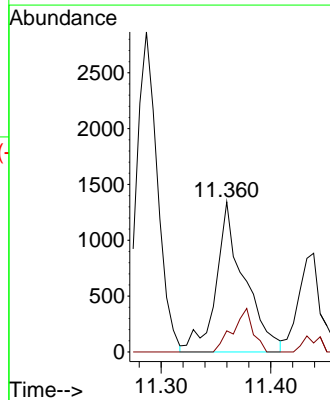
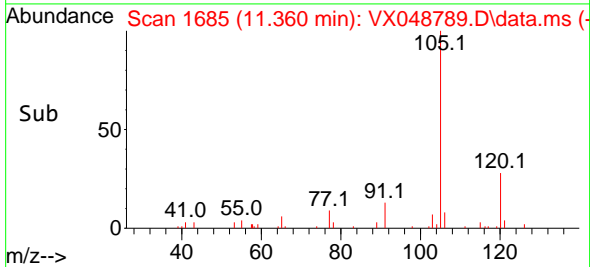
Tgt Ion: 91 Resp: 3771  
 Ion Ratio Lower Upper  
 91 100  
 120 21.3 11.4 34.2

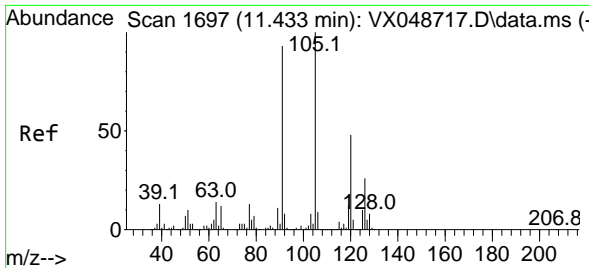


#79  
 2-Chlorotoluene  
 Concen: 0.249 ug/l  
 RT: 11.360 min Scan# 1685  
 Delta R.T. 0.012 min  
 Lab File: VX048789.D  
 Acq: 09 Dec 2025 16:50



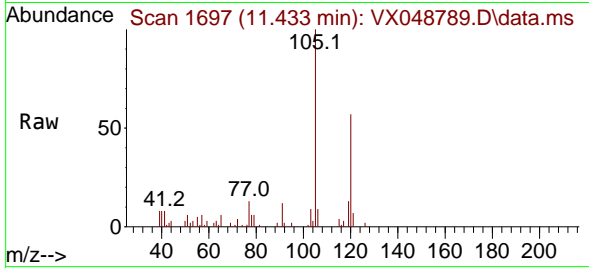
Tgt Ion: 91 Resp: 2412  
 Ion Ratio Lower Upper  
 91 100  
 126 20.7 16.8 50.3



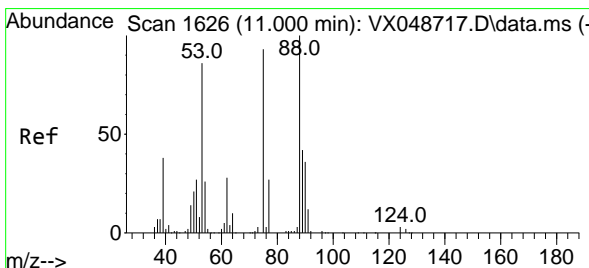
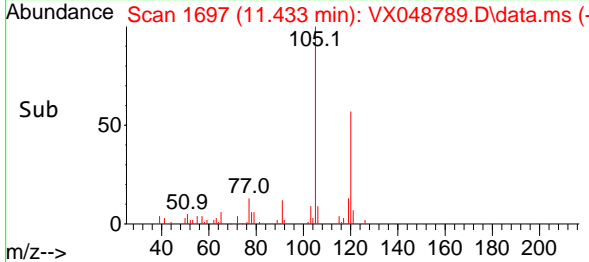
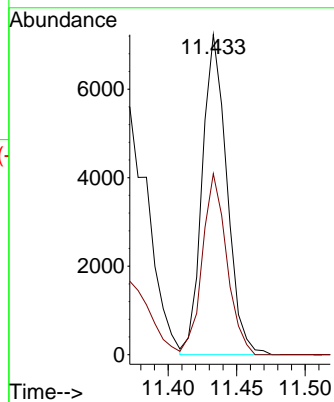


#80  
 1,3,5-Trimethylbenzene  
 Concen: 0.801 ug/l  
 RT: 11.433 min Scan# 1  
 Delta R.T. 0.000 min  
 Lab File: VX048789.D  
 Acq: 09 Dec 2025 16:50

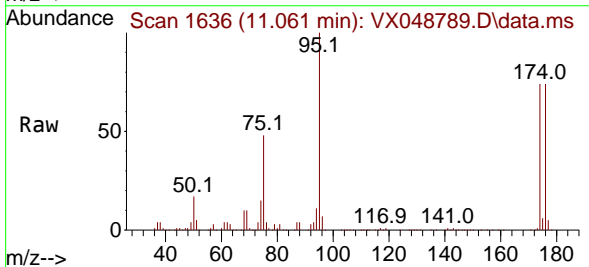
Instrument :  
 MSVOA\_X  
 ClientSampleId :



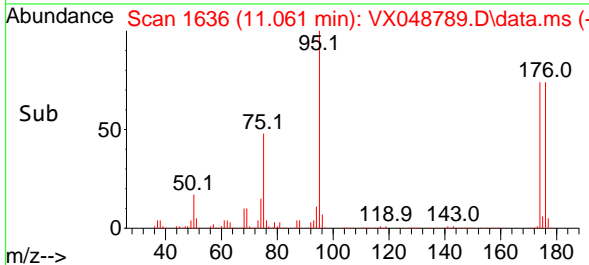
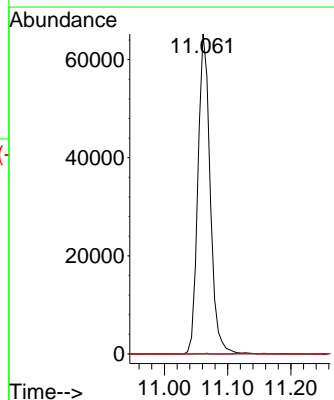
Tgt Ion:105 Resp: 9032  
 Ion Ratio Lower Upper  
 105 100  
 120 56.1 24.4 73.2

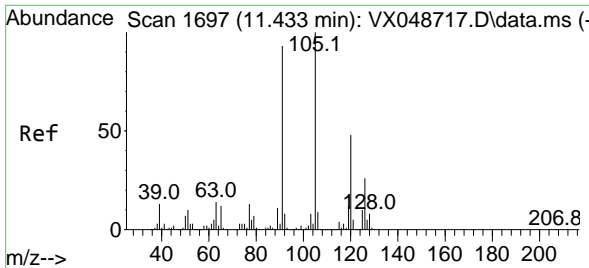


#81  
 trans-1,4-Dichloro-2-butene  
 Concen: 55.244 ug/l  
 RT: 11.061 min Scan# 1636  
 Delta R.T. 0.061 min  
 Lab File: VX048789.D  
 Acq: 09 Dec 2025 16:50



Tgt Ion: 75 Resp: 88205  
 Ion Ratio Lower Upper  
 75 100  
 53 0.0 79.9 119.9#  
 89 0.0 67.1 100.7#

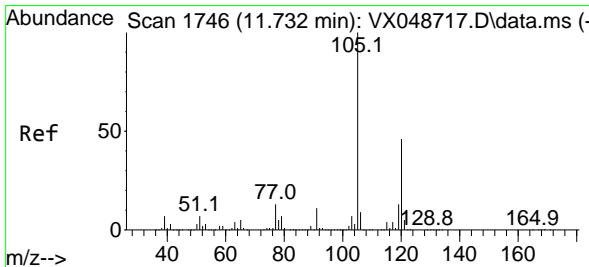
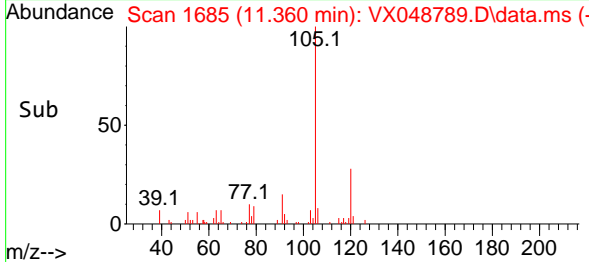
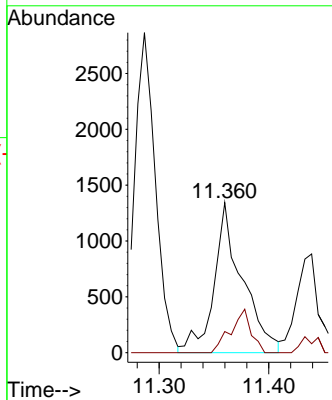
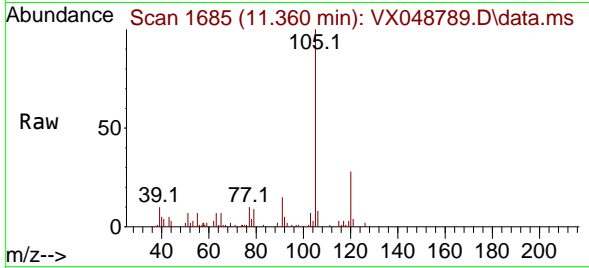




#82  
 4-Chlorotoluene  
 Concen: 0.213 ug/l  
 RT: 11.360 min Scan# 1685  
 Delta R.T. -0.073 min  
 Lab File: VX048789.D  
 Acq: 09 Dec 2025 16:50

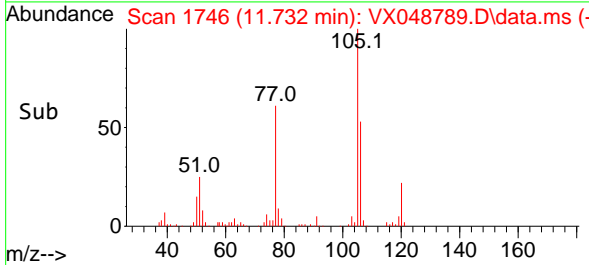
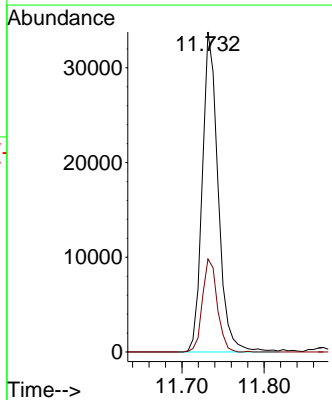
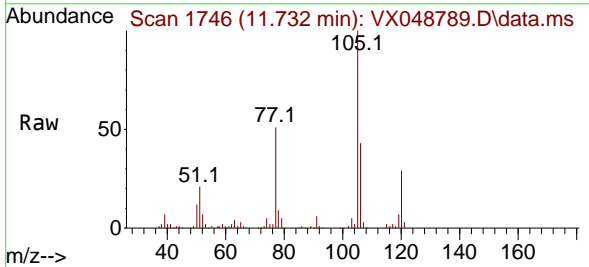
Instrument : MSVOA\_X  
 ClientSampleId :

Tgt Ion: 91 Resp: 2412  
 Ion Ratio Lower Upper  
 91 100  
 126 20.7 14.7 44.1

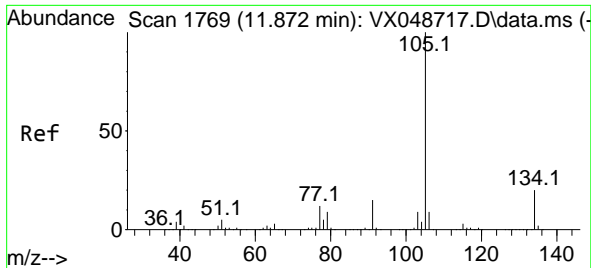


#84  
 1,2,4-Trimethylbenzene  
 Concen: 3.973 ug/l  
 RT: 11.732 min Scan# 1746  
 Delta R.T. 0.000 min  
 Lab File: VX048789.D  
 Acq: 09 Dec 2025 16:50

Tgt Ion: 105 Resp: 45203  
 Ion Ratio Lower Upper  
 105 100  
 120 27.1 22.3 66.8



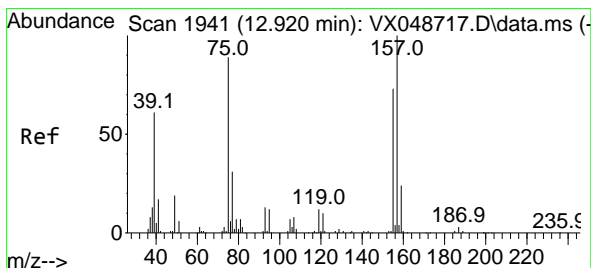
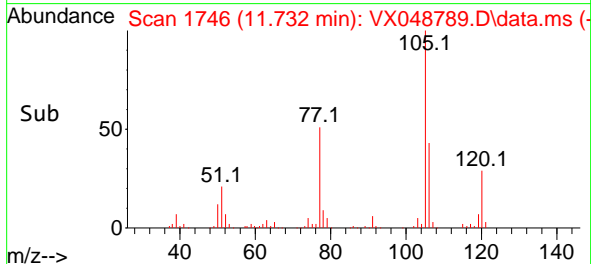
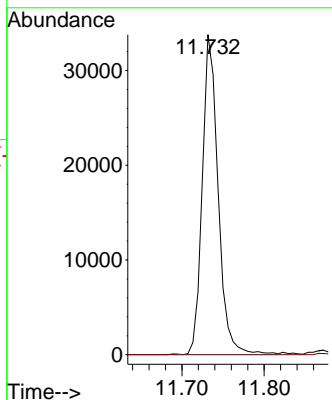
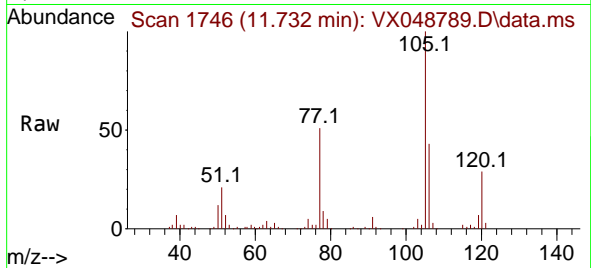




#85  
 sec-Butylbenzene  
 Concen: 3.182 ug/l  
 RT: 11.732 min Scan# 11  
 Delta R.T. -0.140 min  
 Lab File: VX048789.D  
 Acq: 09 Dec 2025 16:50

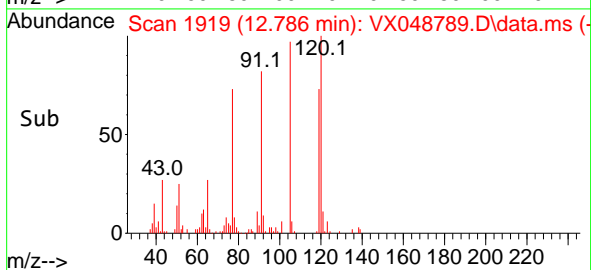
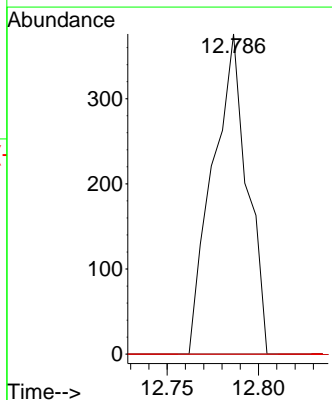
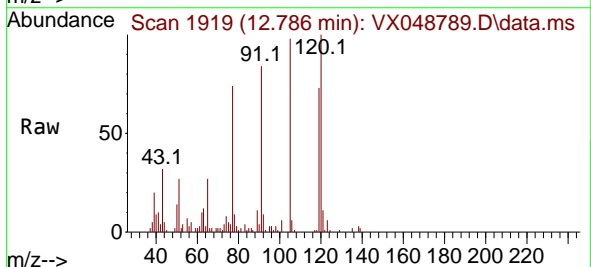
Instrument :  
 MSVOA\_X  
 ClientSampleId :

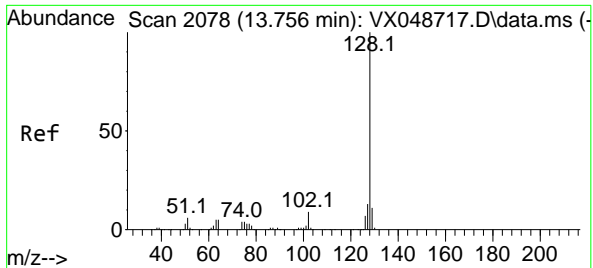
Tgt Ion:105 Resp: 45203  
 Ion Ratio Lower Upper  
 105 100  
 134 0.0 9.8 29.5#



#92  
 1,2-Dibromo-3-Chloropropane  
 Concen: 0.439 ug/l  
 RT: 12.786 min Scan# 1919  
 Delta R.T. -0.134 min  
 Lab File: VX048789.D  
 Acq: 09 Dec 2025 16:50

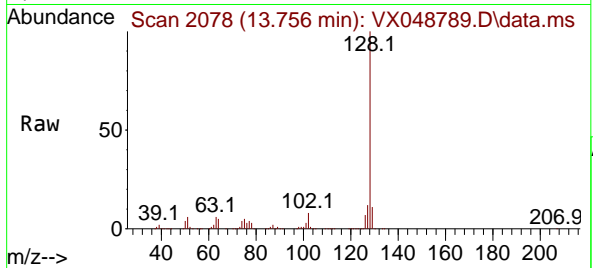
Tgt Ion: 75 Resp: 495  
 Ion Ratio Lower Upper  
 75 100  
 155 0.0 43.0 129.2#  
 157 0.0 56.0 168.2#





#95  
 Naphthalene  
 Concen: 25.050 ug/l  
 RT: 13.756 min Scan# 20  
 Delta R.T. 0.000 min  
 Lab File: VX048789.D  
 Acq: 09 Dec 2025 16:50

Instrument :  
 MSVOA\_X  
 ClientSampleId :



Tgt Ion:128 Resp: 284516

Ion	Ratio	Lower	Upper
128	100		
127	12.6	10.2	15.2
129	11.0	8.6	13.0

