

Data Path : Z:\voasrv\HPCHEM1\MSVOA\_X\Data\VX120925\  
 Data File : VX048790.D  
 Acq On : 09 Dec 2025 17:11  
 Operator : JC/MD  
 Sample : Q3803-14  
 Misc : 5.0mL/MSVOA\_X/WATER  
 ALS Vial : 24 Sample Multiplier: 1

Instrument :  
 MSVOA\_X  
 ClientSampleId :  
 CHASE-N

Quant Time: Dec 10 00:28:28 2025  
 Quant Method : Z:\voasrv\HPCHEM1\MSVOA\_X\Method\82X120425W.M  
 Quant Title : SW846 8260  
 QLast Update : Fri Dec 05 03:27:34 2025  
 Response via : Initial Calibration

Compound	R.T.	QIon	Response	Conc	Units	Dev(Min)
Internal Standards						
1) Pentafluorobenzene	5.538	168	165845	50.000	ug/l	0.00
34) 1,4-Difluorobenzene	6.745	114	334402	50.000	ug/l	0.00
63) Chlorobenzene-d5	10.037	117	356325	50.000	ug/l	0.00
72) 1,4-Dichlorobenzene-d4	12.006	152	195561	50.000	ug/l	0.00
System Monitoring Compounds						
33) 1,2-Dichloroethane-d4	5.940	65	116404	52.294	ug/l	0.00
Spiked Amount	50.000	Range 78 - 117	Recovery	=	104.580%	
35) Dibromofluoromethane	5.373	113	103439	44.925	ug/l	0.00
Spiked Amount	50.000	Range 75 - 124	Recovery	=	89.840%	
50) Toluene-d8	8.635	98	373157	46.235	ug/l	0.00
Spiked Amount	50.000	Range 92 - 112	Recovery	=	92.460%	
62) 4-Bromofluorobenzene	11.061	95	168849	60.669	ug/l	0.00
Spiked Amount	50.000	Range 83 - 123	Recovery	=	121.340%	
Target Compounds						
						Qvalue
11) Tert butyl alcohol	2.928	59	5175	14.400	ug/l	99
13) Acrolein	2.233	56	918	42.398	ug/l #	61
14) Allyl chloride	2.642	41	842	0.260	ug/l #	27
15) Acrylonitrile	3.081	53	1218	1.088	ug/l #	43
16) Acetone	2.374	43	84793	99.506	ug/l	100
18) Methyl Acetate	2.703	43	9183	3.830	ug/l	98
20) Methylene Chloride	2.788	84	131079	61.541	ug/l	97
25) 2-Butanone	4.550	43	14160	11.259	ug/l	98
29) Tetrahydrofuran	5.001	42	290	0.302	ug/l #	71
31) Cyclohexane	5.452	56	1741	0.579	ug/l #	68
36) 1,1-Dichloropropene	5.544	75	12359	3.919	ug/l #	45
38) Carbon Tetrachloride	5.544	117	16244	4.547	ug/l #	14
39) Methylcyclohexane	7.361	83	1702	0.456	ug/l #	70
40) Benzene	6.025	78	934094	99.917	ug/l	100
42) 1,2-Dichloroethane	6.025	62	7623	2.304	ug/l #	73
43) Isopropyl Acetate	6.324	43	15769	2.764	ug/l	94
48) Methyl methacrylate	7.781	41	57650	20.085	ug/l #	40
51) 4-Methyl-2-Pentanone	8.531	43	56540	15.964	ug/l #	35
52) Toluene	8.702	92	351856	62.415	ug/l	100
54) cis-1,3-Dichloropropene	8.531	75	21967	5.816	ug/l #	56
55) 1,1,2-Trichloroethane	9.000	97	2444	1.077	ug/l #	18
57) 1,3-Dichloropropane	9.464	76	1832	0.486	ug/l #	42
59) 2-Hexanone	9.464	43	24964	10.041	ug/l #	46
67) Ethyl Benzene	10.177	91	40078	3.149	ug/l	97
68) m/p-Xylenes	10.281	106	76681	15.467	ug/l	99
69) o-Xylene	10.622	106	46986	10.114	ug/l	99
70) Styrene	10.640	104	16395	2.056	ug/l #	67
74) N-amyl acetate	10.842	43	1507	0.263	ug/l #	1
76) 1,2,3-Trichloropropane	11.061	75	84158	23.105	ug/l #	30
78) n-propylbenzene	11.287	91	4197	0.275	ug/l	98
79) 2-Chlorotoluene	11.360	91	2458	0.264	ug/l #	63
80) 1,3,5-Trimethylbenzene	11.433	105	11734	1.083	ug/l	100
81) trans-1,4-Dichloro-2-b...	11.061	75	84158	54.884	ug/l #	3
84) 1,2,4-Trimethylbenzene	11.732	105	44016	4.028	ug/l	78
85) sec-Butylbenzene	11.732	105	44016	3.227	ug/l #	57
95) Naphthalene	13.756	128	295930	27.036	ug/l	100

Data Path : Z:\voasrv\HPCHEM1\MSVOA\_X\Data\VX120925\  
Data File : VX048790.D  
Acq On : 09 Dec 2025 17:11  
Operator : JC/MD  
Sample : Q3803-14  
Misc : 5.0mL/MSVOA\_X/WATER  
ALS Vial : 24 Sample Multiplier: 1

Instrument :  
MSVOA\_X  
ClientSampleId :  
CHASE-N

Quant Time: Dec 10 00:28:28 2025  
Quant Method : Z:\voasrv\HPCHEM1\MSVOA\_X\Method\82X120425W.M  
Quant Title : SW846 8260  
QLast Update : Fri Dec 05 03:27:34 2025  
Response via : Initial Calibration

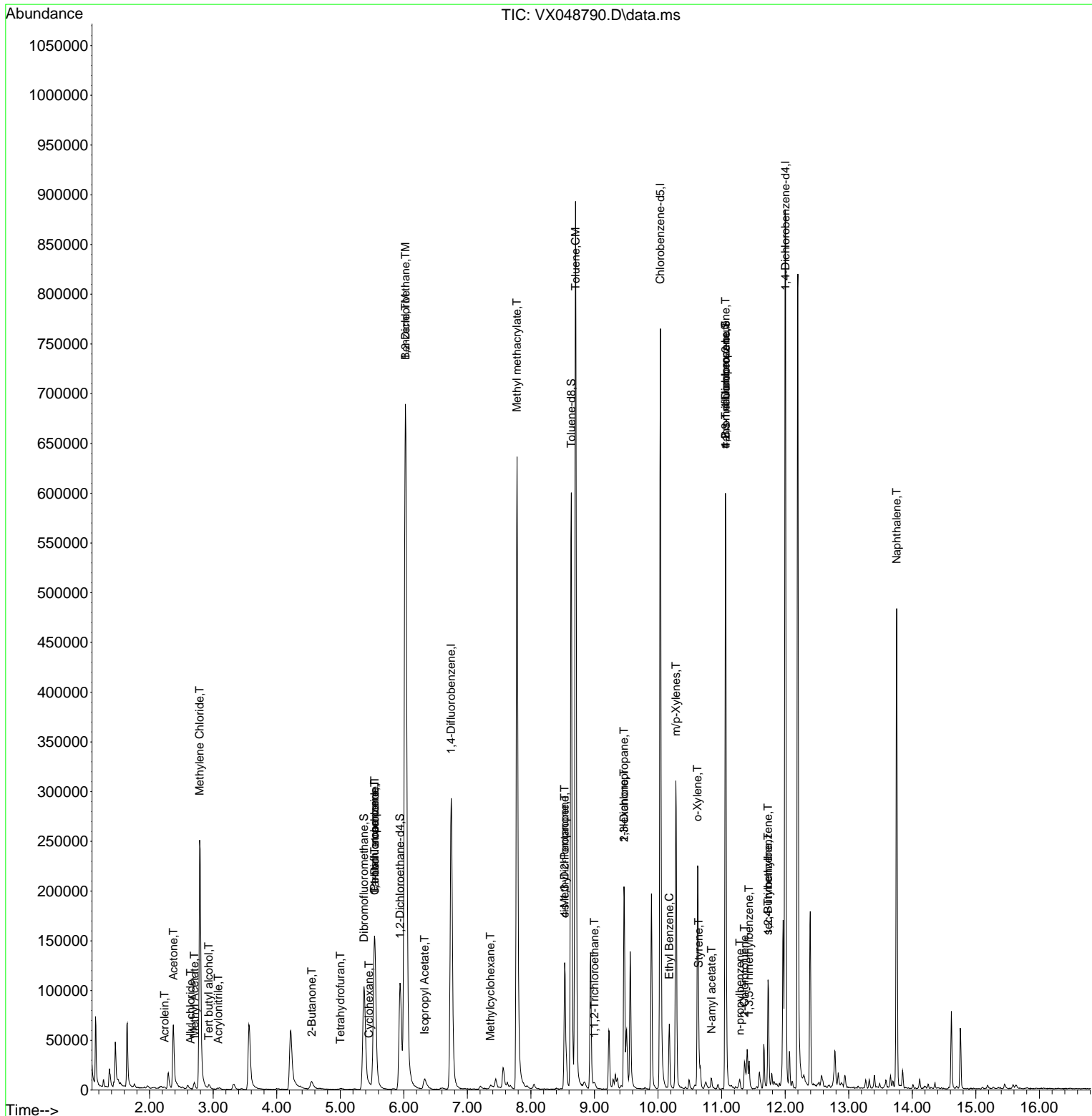
Compound	R.T.	QIon	Response	Conc	Units	Dev(Min)
----------	------	------	----------	------	-------	----------

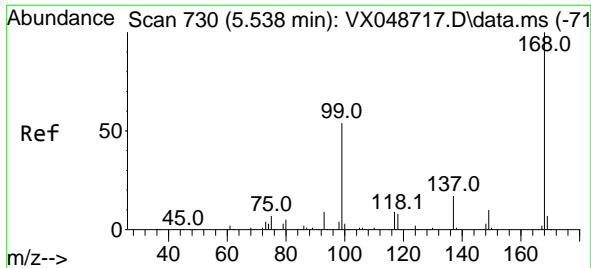
(#) = qualifier out of range (m) = manual integration (+) = signals summed

Data Path : Z:\voasrv\HPCHEM1\MSVOA\_X\Data\VX120925\  
 Data File : VX048790.D  
 Acq On : 09 Dec 2025 17:11  
 Operator : JC/MD  
 Sample : Q3803-14  
 Misc : 5.0mL/MSVOA\_X/WATER  
 ALS Vial : 24 Sample Multiplier: 1

Instrument :  
 MSVOA\_X  
 ClientSampleId :  
 CHASE-N

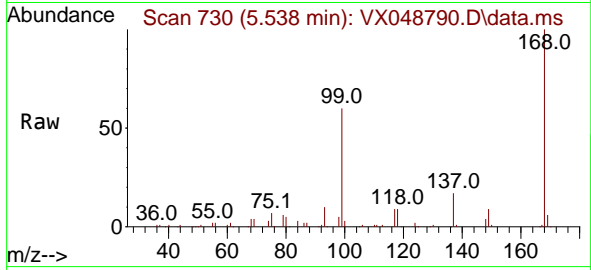
Quant Time: Dec 10 00:28:28 2025  
 Quant Method : Z:\voasrv\HPCHEM1\MSVOA\_X\Method\82X120425W.M  
 Quant Title : SW846 8260  
 QLast Update : Fri Dec 05 03:27:34 2025  
 Response via : Initial Calibration



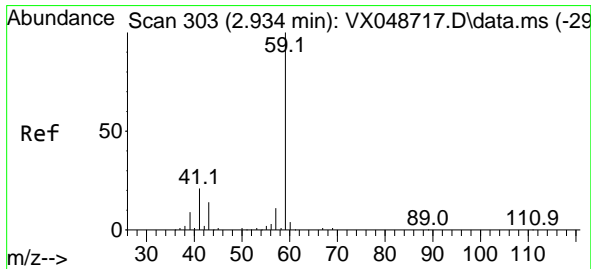
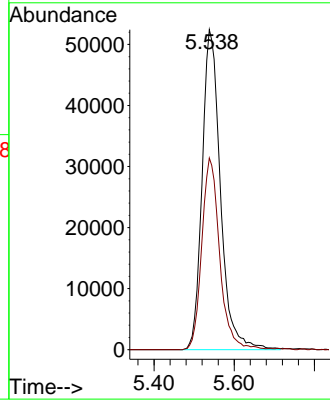
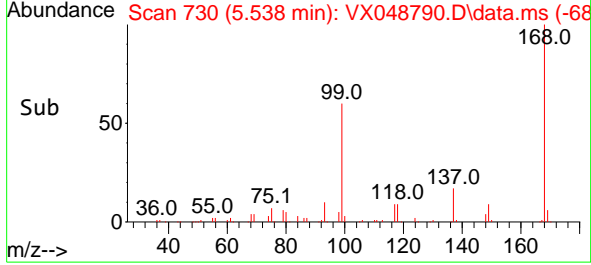


#1  
 Pentafluorobenzene  
 Concen: 50.000 ug/l  
 RT: 5.538 min Scan# 71  
 Delta R.T. -0.000 min  
 Lab File: VX048790.D  
 Acq: 09 Dec 2025 17:11

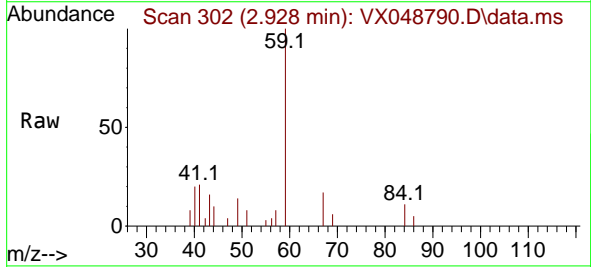
Instrument :  
 MSVOA\_X  
 ClientSampleId :  
 CHASE-N



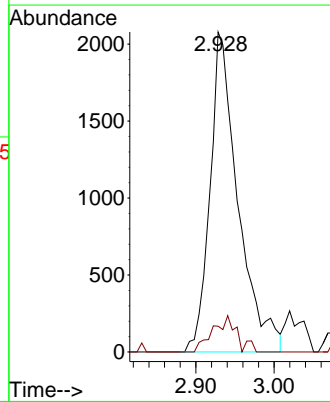
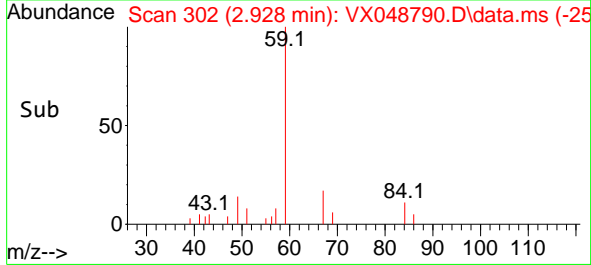
Tgt Ion:168 Resp: 165845  
 Ion Ratio Lower Upper  
 168 100  
 99 59.9 44.2 66.4

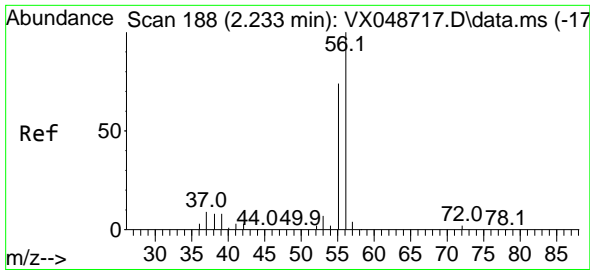


#11  
 Tert butyl alcohol  
 Concen: 14.400 ug/l  
 RT: 2.928 min Scan# 302  
 Delta R.T. -0.006 min  
 Lab File: VX048790.D  
 Acq: 09 Dec 2025 17:11



Tgt Ion: 59 Resp: 5175  
 Ion Ratio Lower Upper  
 59 100  
 57 9.8 8.1 12.1

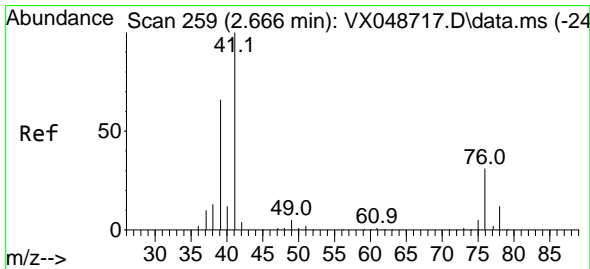
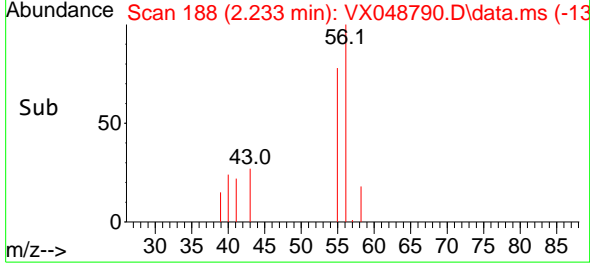
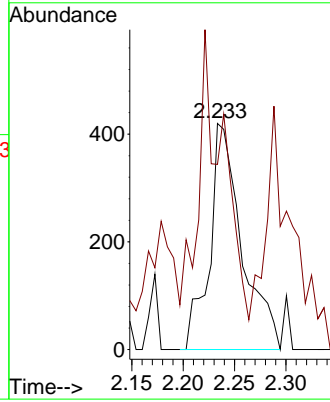
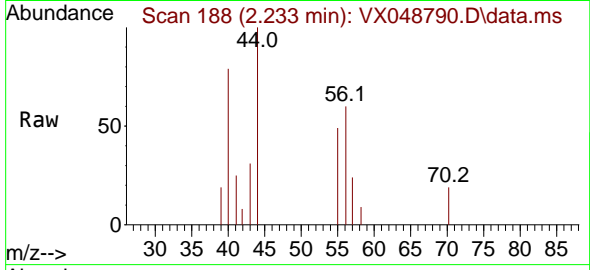




#13  
 Acrolein  
 Concen: 42.398 ug/l  
 RT: 2.233 min Scan# 11  
 Delta R.T. 0.000 min  
 Lab File: VX048790.D  
 Acq: 09 Dec 2025 17:11

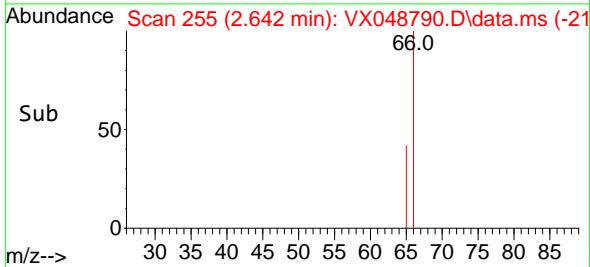
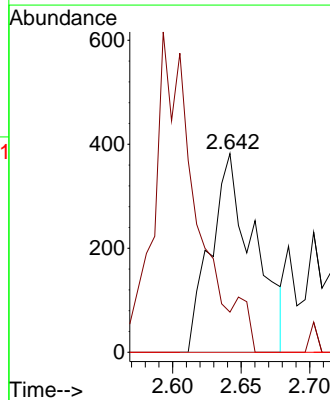
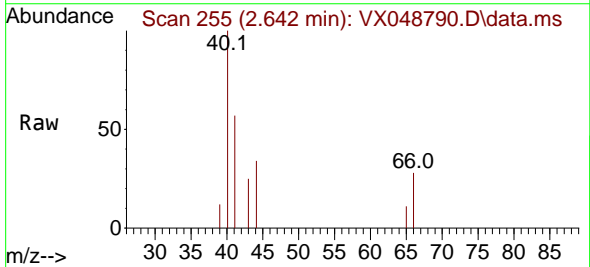
Instrument :  
 MSVOA\_X  
 ClientSampleId :  
 CHASE-N

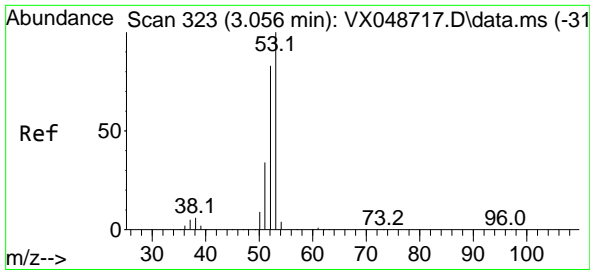
Tgt Ion: 56 Resp: 918  
 Ion Ratio Lower Upper  
 56 100  
 55 101.3 55.8 83.6#



#14  
 Allyl chloride  
 Concen: 0.260 ug/l  
 RT: 2.642 min Scan# 255  
 Delta R.T. -0.024 min  
 Lab File: VX048790.D  
 Acq: 09 Dec 2025 17:11

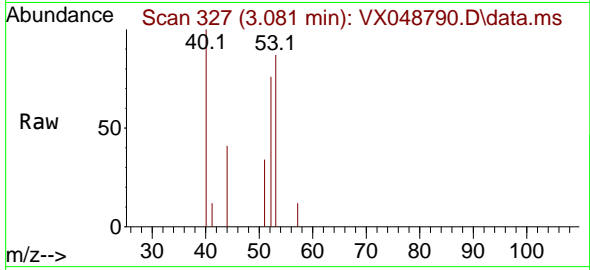
Tgt Ion: 41 Resp: 842  
 Ion Ratio Lower Upper  
 41 100  
 39 0.0 49.8 74.6#  
 76 0.0 27.3 40.9#



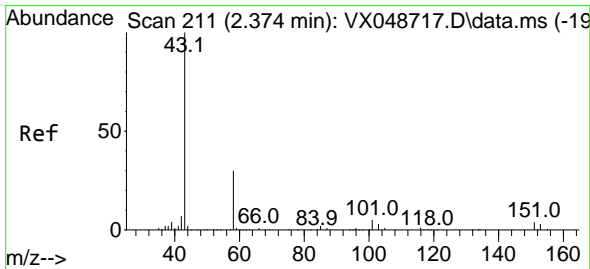
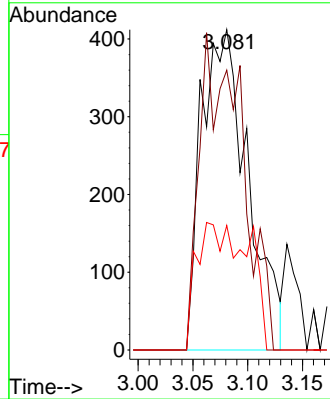
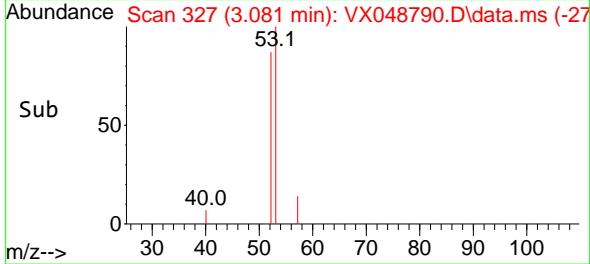


#15  
 Acrylonitrile  
 Concen: 1.088 ug/l  
 RT: 3.081 min Scan# 31  
 Delta R.T. 0.024 min  
 Lab File: VX048790.D  
 Acq: 09 Dec 2025 17:11

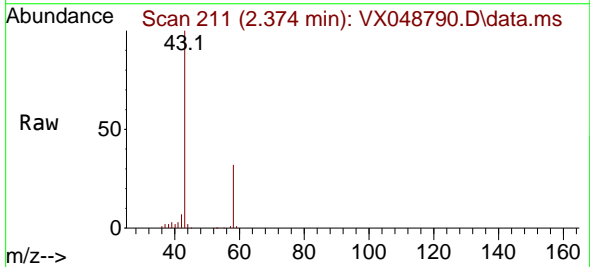
Instrument :  
 MSVOA\_X  
 ClientSampleId :  
 CHASE-N



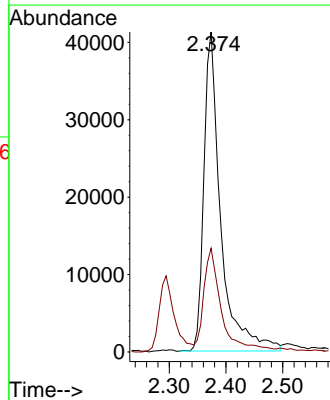
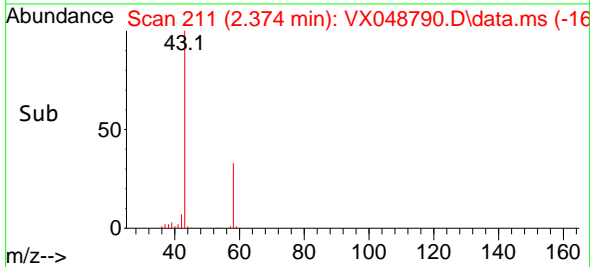
Tgt Ion: 53 Resp: 1218  
 Ion Ratio Lower Upper  
 53 100  
 52 33.2 66.3 99.5#  
 51 0.0 28.7 43.1#

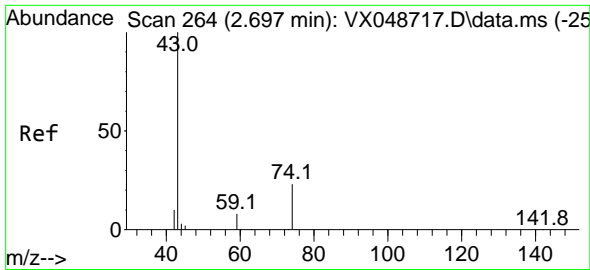


#16  
 Acetone  
 Concen: 99.506 ug/l  
 RT: 2.374 min Scan# 211  
 Delta R.T. 0.000 min  
 Lab File: VX048790.D  
 Acq: 09 Dec 2025 17:11



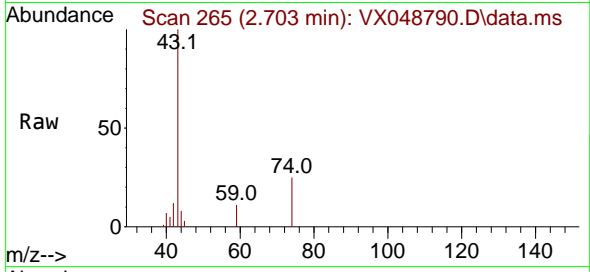
Tgt Ion: 43 Resp: 84793  
 Ion Ratio Lower Upper  
 43 100  
 58 31.3 25.0 37.4



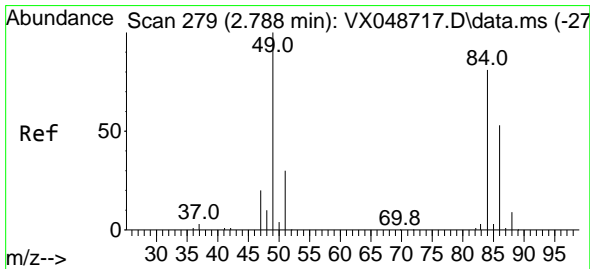
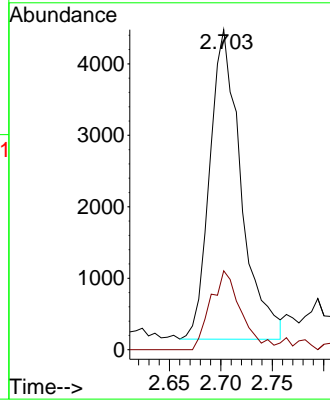
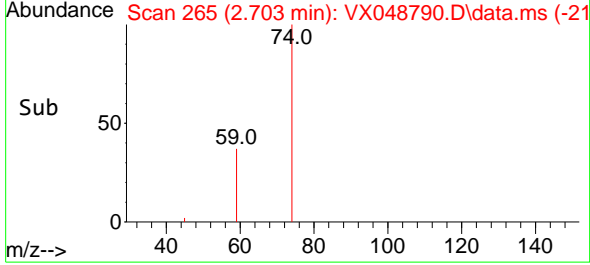


#18  
 Methyl Acetate  
 Concen: 3.830 ug/l  
 RT: 2.703 min Scan# 20  
 Delta R.T. 0.006 min  
 Lab File: VX048790.D  
 Acq: 09 Dec 2025 17:11

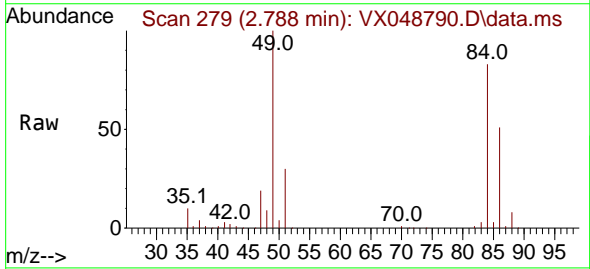
Instrument :  
 MSVOA\_X  
 ClientSampleId :  
 CHASE-N



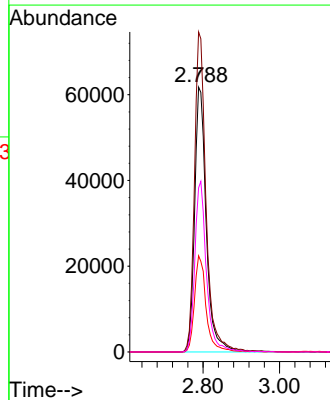
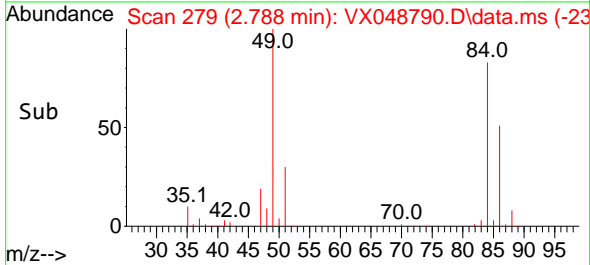
Tgt Ion: 43 Resp: 9183  
 Ion Ratio Lower Upper  
 43 100  
 74 24.7 19.2 28.8

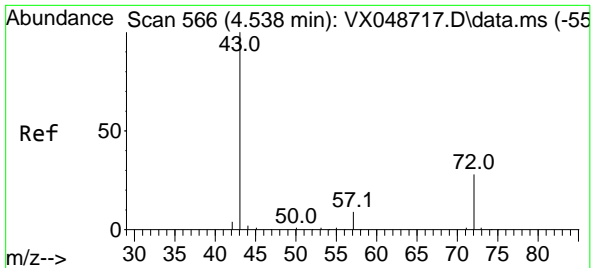


#20  
 Methylene Chloride  
 Concen: 61.541 ug/l  
 RT: 2.788 min Scan# 279  
 Delta R.T. 0.000 min  
 Lab File: VX048790.D  
 Acq: 09 Dec 2025 17:11



Tgt Ion: 84 Resp: 131079  
 Ion Ratio Lower Upper  
 84 100  
 49 120.8 98.7 148.1  
 51 36.3 29.4 44.2  
 86 62.0 52.5 78.7

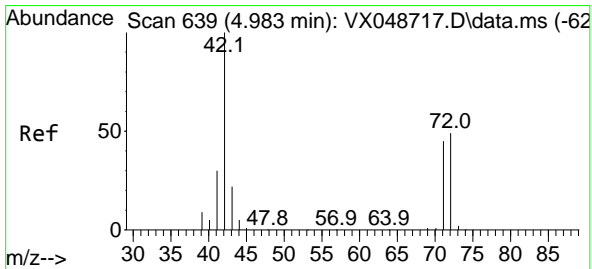
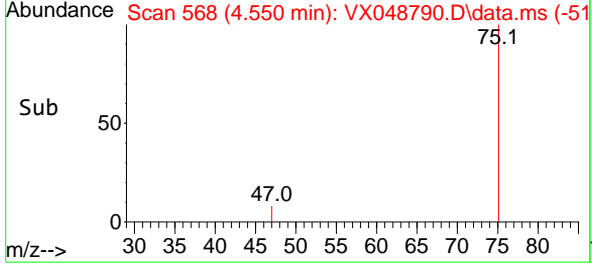
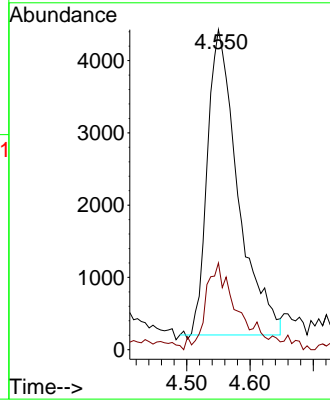
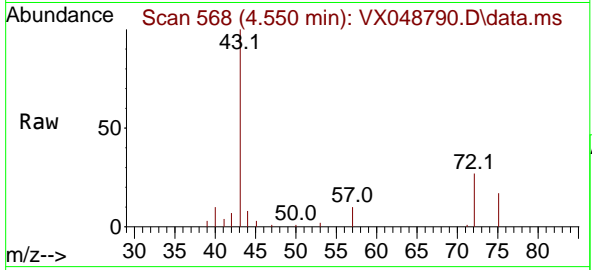




#25  
 2-Butanone  
 Concen: 11.259 ug/l  
 RT: 4.550 min Scan# 50  
 Delta R.T. 0.012 min  
 Lab File: VX048790.D  
 Acq: 09 Dec 2025 17:11

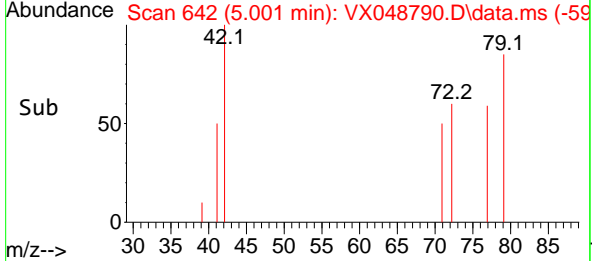
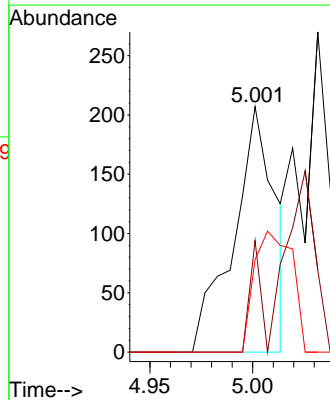
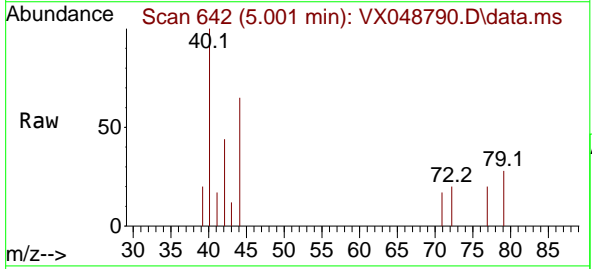
Instrument :  
 MSVOA\_X  
 ClientSampleId :  
 CHASE-N

Tgt Ion: 43 Resp: 14160  
 Ion Ratio Lower Upper  
 43 100  
 72 27.0 22.6 34.0

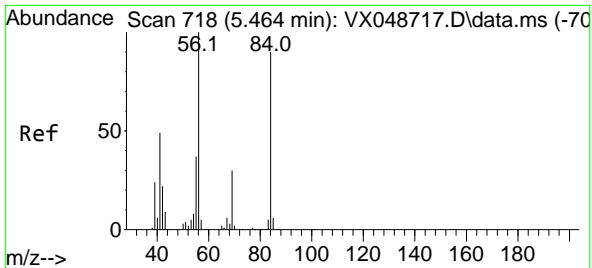


#29  
 Tetrahydrofuran  
 Concen: 0.302 ug/l  
 RT: 5.001 min Scan# 642  
 Delta R.T. 0.018 min  
 Lab File: VX048790.D  
 Acq: 09 Dec 2025 17:11

Tgt Ion: 42 Resp: 290  
 Ion Ratio Lower Upper  
 42 100  
 72 11.7 39.4 59.2#  
 71 45.2 35.8 53.6





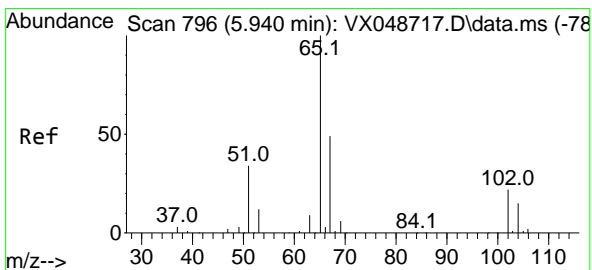
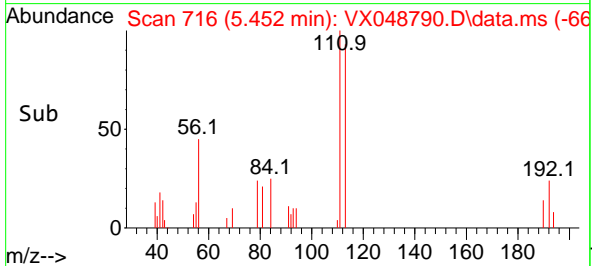
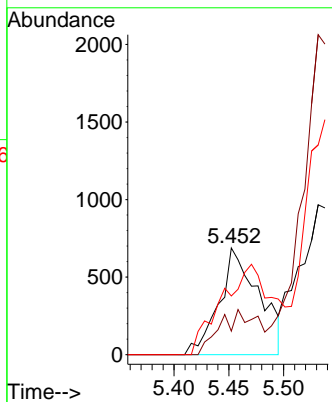
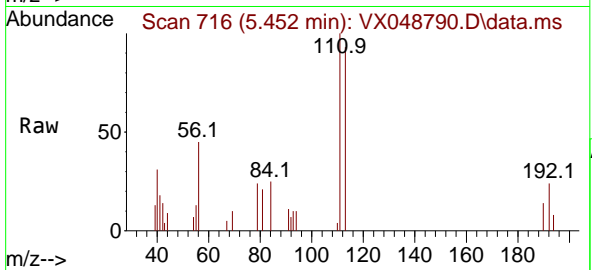


#31  
 Cyclohexane  
 Concen: 0.579 ug/l  
 RT: 5.452 min Scan# 716  
 Delta R.T. -0.012 min  
 Lab File: VX048790.D  
 Acq: 09 Dec 2025 17:11

Instrument : MSVOA\_X  
 ClientSampleId : CHASE-N

Tgt Ion: 56 Resp: 1741

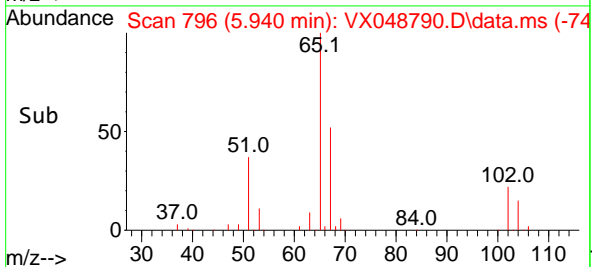
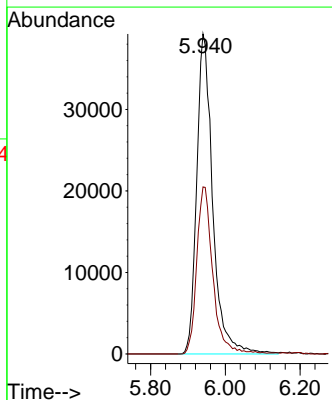
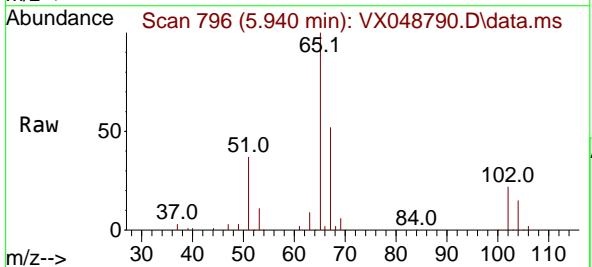
Ion	Ratio	Lower	Upper
56	100		
69	22.1	24.2	36.2#
84	54.9	72.1	108.1#

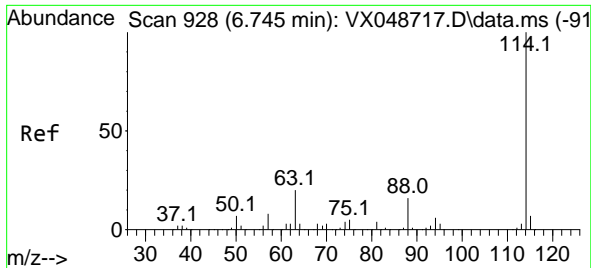


#33  
 1,2-Dichloroethane-d4  
 Concen: 52.294 ug/l  
 RT: 5.940 min Scan# 796  
 Delta R.T. 0.000 min  
 Lab File: VX048790.D  
 Acq: 09 Dec 2025 17:11

Tgt Ion: 65 Resp: 116404

Ion	Ratio	Lower	Upper
65	100		
67	52.5	0.0	107.4

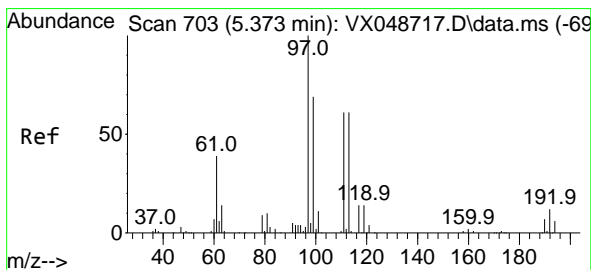
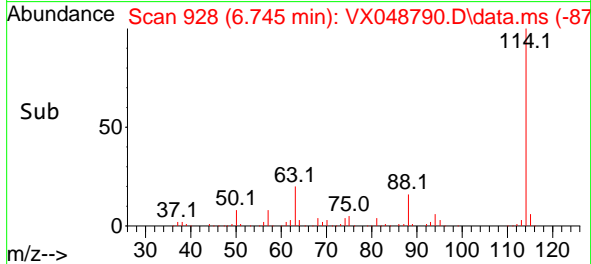
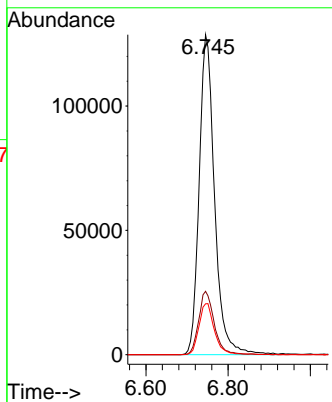
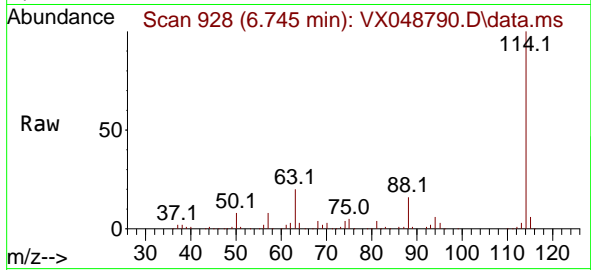




#34  
 1,4-Difluorobenzene  
 Concen: 50.000 ug/l  
 RT: 6.745 min Scan# 91  
 Delta R.T. 0.000 min  
 Lab File: VX048790.D  
 Acq: 09 Dec 2025 17:11

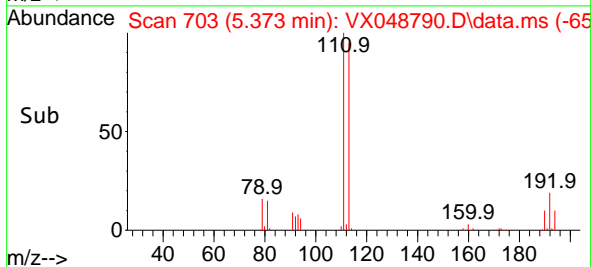
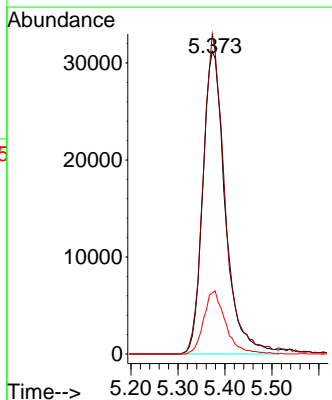
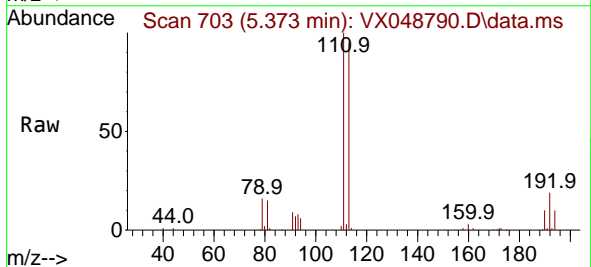
Instrument :  
 MSVOA\_X  
 ClientSampleId :  
 CHASE-N

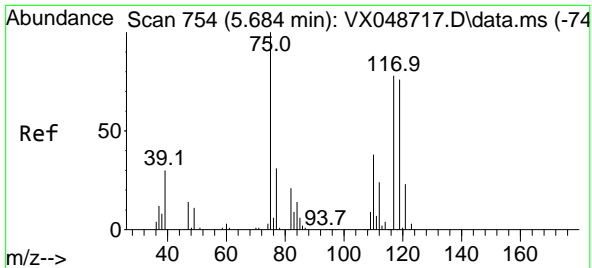
Tgt Ion:114 Resp: 334402  
 Ion Ratio Lower Upper  
 114 100  
 63 19.8 0.0 39.0  
 88 15.9 0.0 31.8



#35  
 Dibromofluoromethane  
 Concen: 44.925 ug/l  
 RT: 5.373 min Scan# 703  
 Delta R.T. 0.000 min  
 Lab File: VX048790.D  
 Acq: 09 Dec 2025 17:11

Tgt Ion:113 Resp: 103439  
 Ion Ratio Lower Upper  
 113 100  
 111 102.3 79.5 119.3  
 192 20.3 16.1 24.1

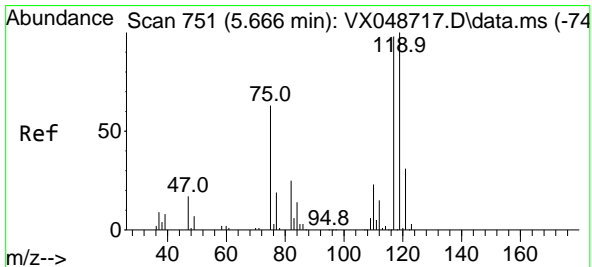
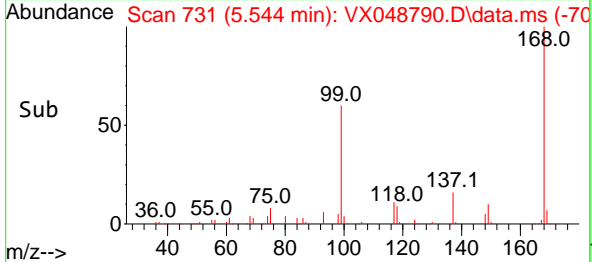
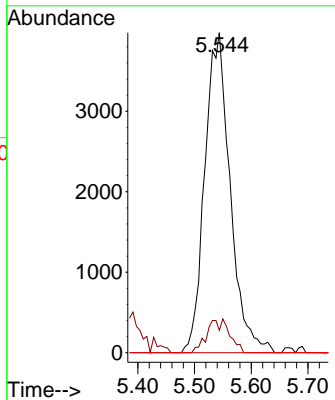
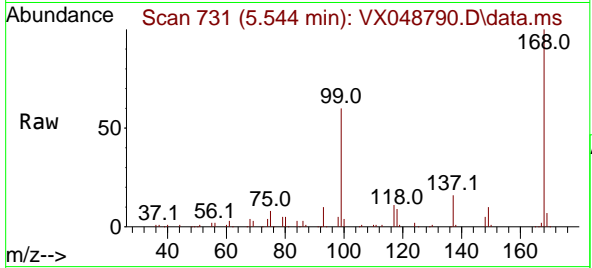




#36  
 1,1-Dichloropropene  
 Concen: 3.919 ug/l  
 RT: 5.544 min Scan# 711  
 Delta R.T. -0.140 min  
 Lab File: VX048790.D  
 Acq: 09 Dec 2025 17:11

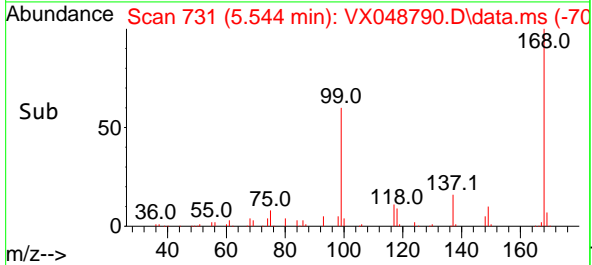
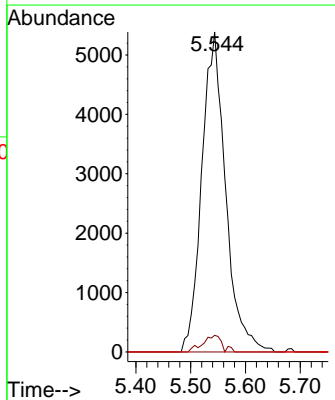
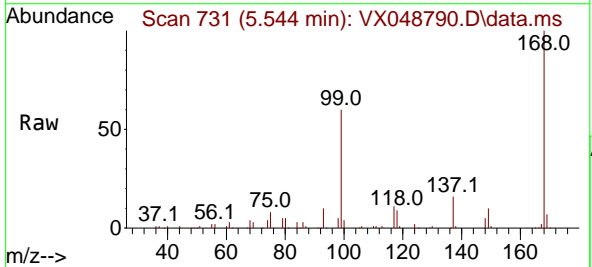
Instrument :  
 MSVOA\_X  
 ClientSampleId :  
 CHASE-N

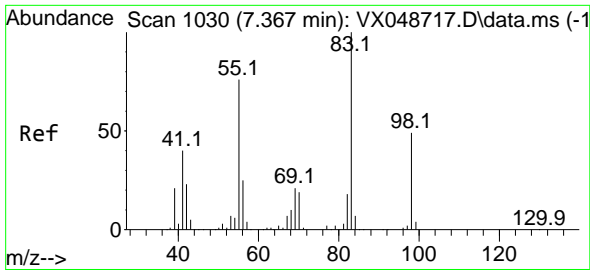
Tgt Ion	Resp	Lower	Upper
75	12359		
75	100		
110	5.4	18.6	55.8#
77	0.0	25.3	37.9#



#38  
 Carbon Tetrachloride  
 Concen: 4.547 ug/l  
 RT: 5.544 min Scan# 731  
 Delta R.T. -0.122 min  
 Lab File: VX048790.D  
 Acq: 09 Dec 2025 17:11

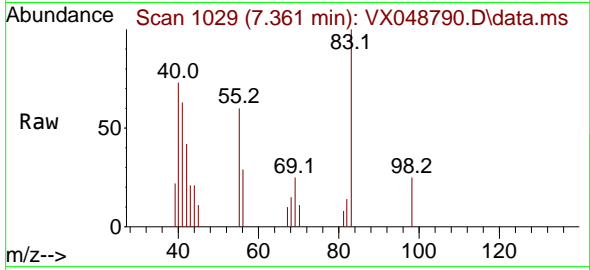
Tgt Ion	Resp	Lower	Upper
117	16244		
117	100		
119	5.2	80.5	120.7#
121	0.0	25.4	38.0#



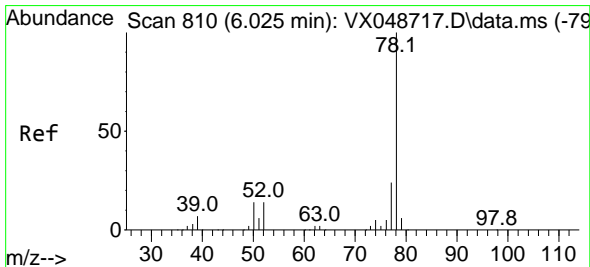
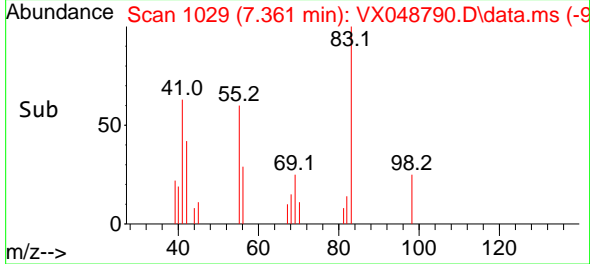
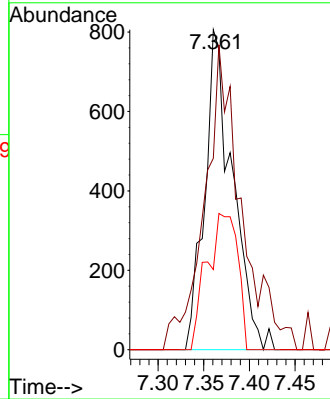


#39  
 Methylcyclohexane  
 Concen: 0.456 ug/l  
 RT: 7.361 min Scan# 10  
 Delta R.T. -0.006 min  
 Lab File: VX048790.D  
 Acq: 09 Dec 2025 17:11

Instrument :  
 MSVOA\_X  
 ClientSampleId :  
 CHASE-N

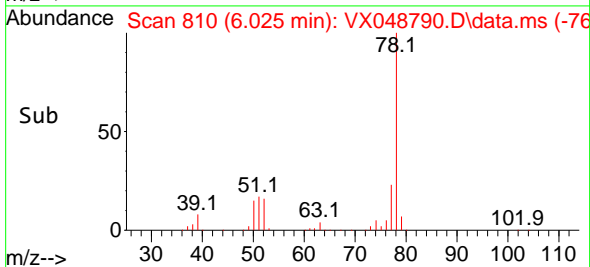
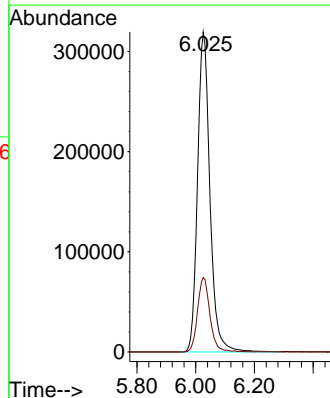
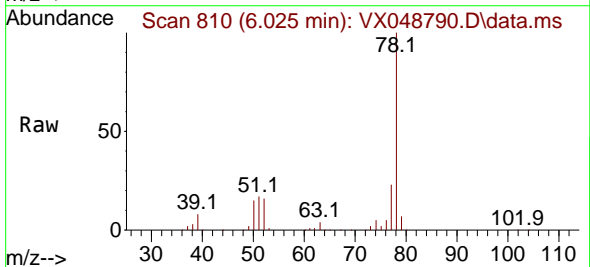


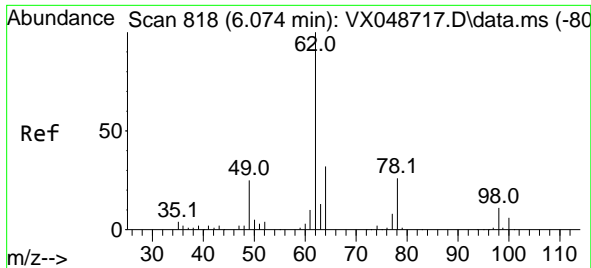
Tgt Ion: 83 Resp: 1702  
 Ion Ratio Lower Upper  
 83 100  
 55 53.6 60.6 90.8#  
 98 25.1 39.3 58.9#



#40  
 Benzene  
 Concen: 99.917 ug/l  
 RT: 6.025 min Scan# 810  
 Delta R.T. 0.000 min  
 Lab File: VX048790.D  
 Acq: 09 Dec 2025 17:11

Tgt Ion: 78 Resp: 934094  
 Ion Ratio Lower Upper  
 78 100  
 77 23.3 18.8 28.2

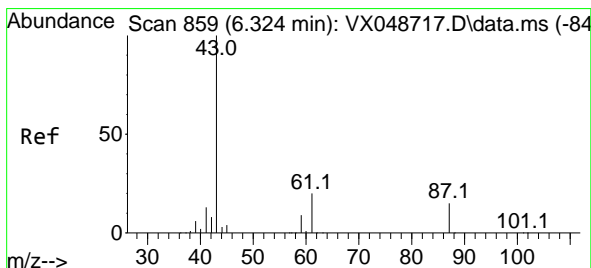
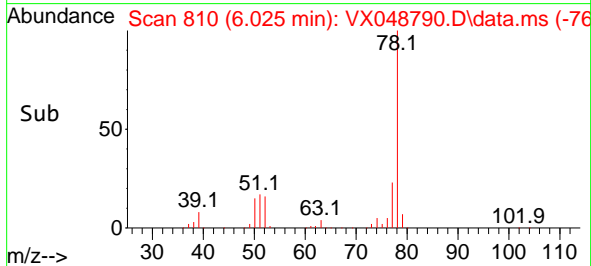
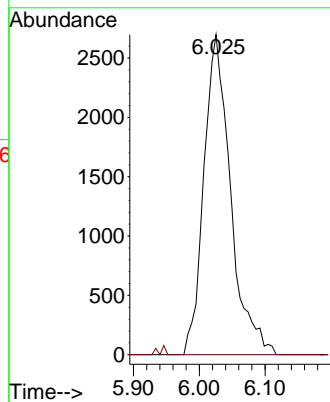
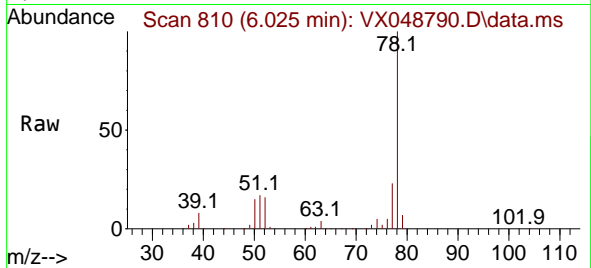




#42  
 1,2-Dichloroethane  
 Concen: 2.304 ug/l  
 RT: 6.025 min Scan# 810  
 Delta R.T. -0.049 min  
 Lab File: VX048790.D  
 Acq: 09 Dec 2025 17:11

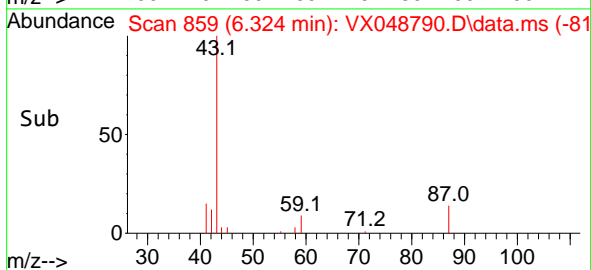
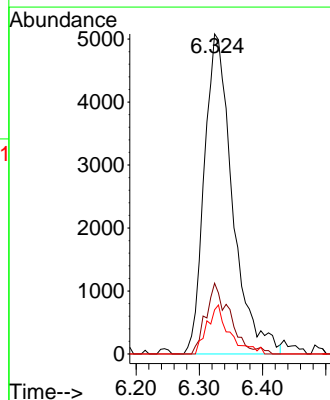
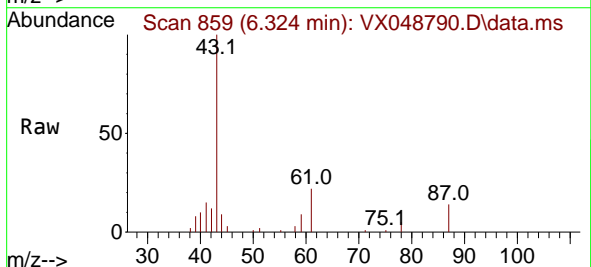
Instrument : MSVOA\_X  
 ClientSampleId : CHASE-N

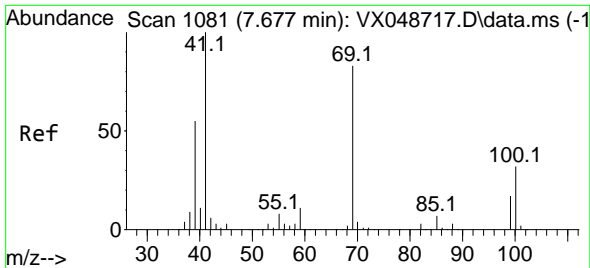
Tgt Ion: 62 Resp: 7623  
 Ion Ratio Lower Upper  
 62 100  
 98 0.0 0.0 20.2



#43  
 Isopropyl Acetate  
 Concen: 2.764 ug/l  
 RT: 6.324 min Scan# 859  
 Delta R.T. 0.000 min  
 Lab File: VX048790.D  
 Acq: 09 Dec 2025 17:11

Tgt Ion: 43 Resp: 15769  
 Ion Ratio Lower Upper  
 43 100  
 61 18.5 16.8 25.2  
 87 12.1 11.8 17.6



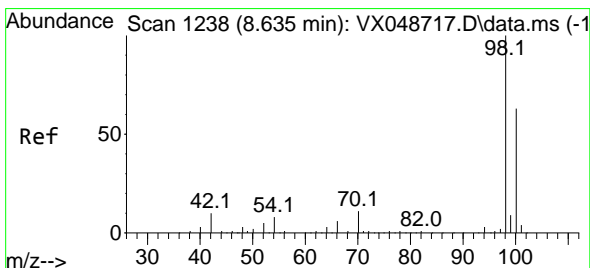
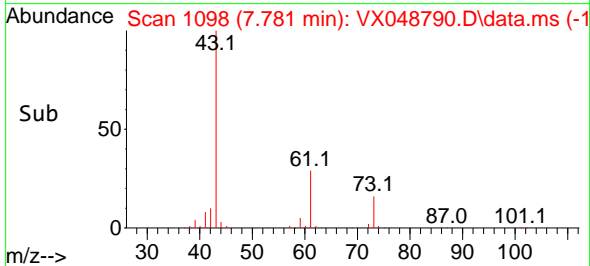
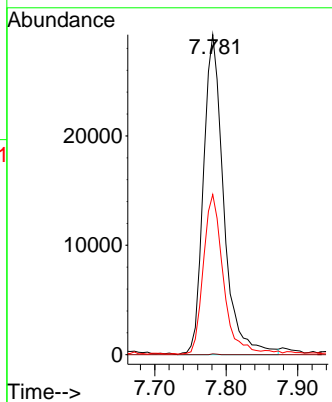
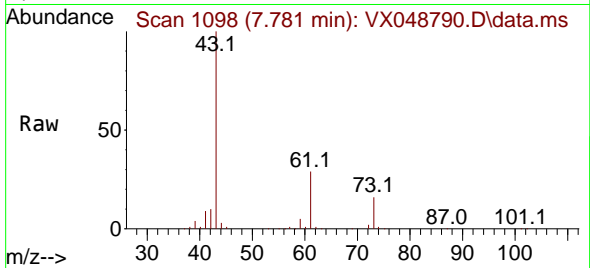


#48  
 Methyl methacrylate  
 Concen: 20.085 ug/l  
 RT: 7.781 min Scan# 1098  
 Delta R.T. 0.104 min  
 Lab File: VX048790.D  
 Acq: 09 Dec 2025 17:11

Instrument :  
 MSVOA\_X  
 ClientSampleId :  
 CHASE-N

Tgt Ion: 41 Resp: 57650

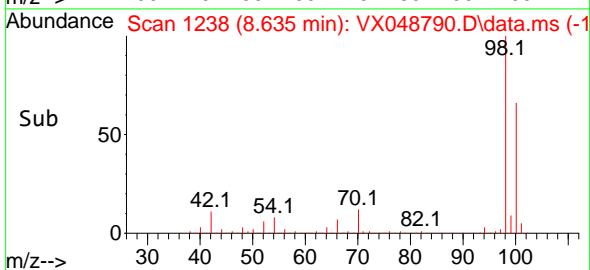
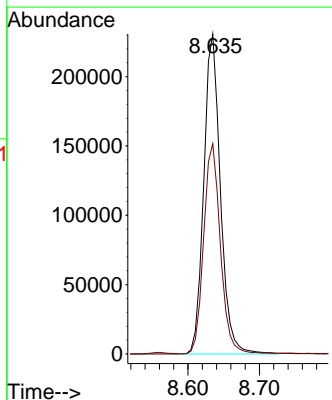
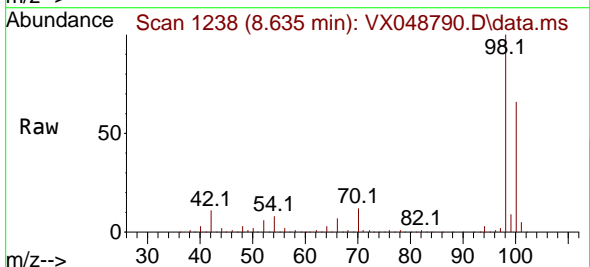
Ion	Ratio	Lower	Upper
41	100		
69	0.1	68.5	102.7#
39	49.3	43.5	65.3

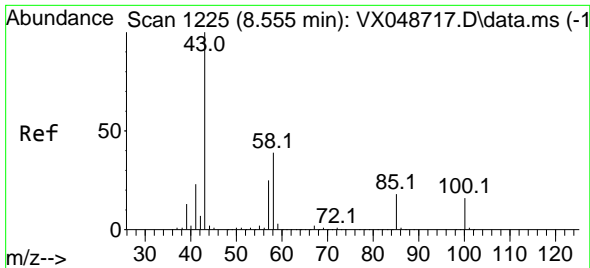


#50  
 Toluene-d8  
 Concen: 46.235 ug/l  
 RT: 8.635 min Scan# 1238  
 Delta R.T. 0.000 min  
 Lab File: VX048790.D  
 Acq: 09 Dec 2025 17:11

Tgt Ion: 98 Resp: 373157

Ion	Ratio	Lower	Upper
98	100		
100	66.1	53.4	80.0

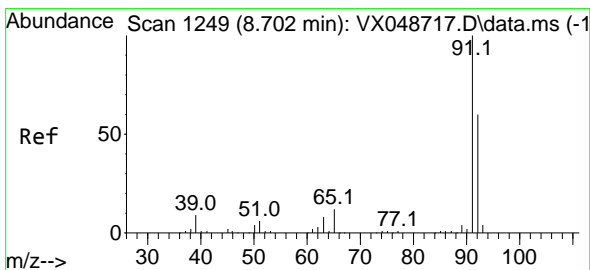
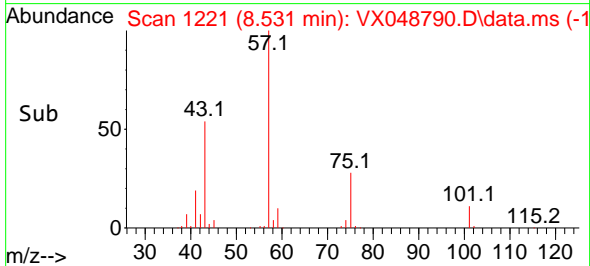
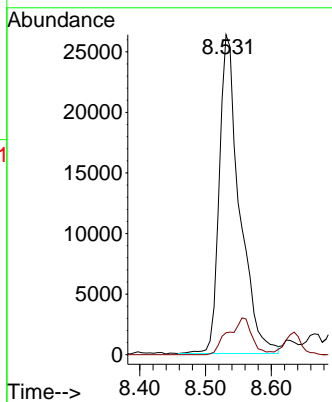
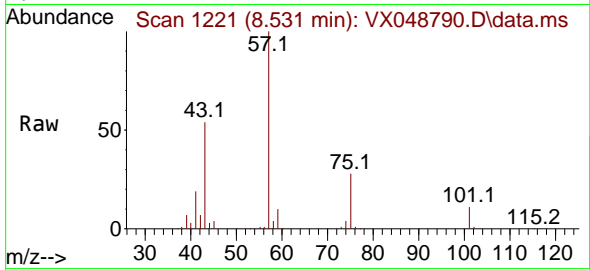




#51  
 4-Methyl-2-Pentanone  
 Concen: 15.964 ug/l  
 RT: 8.531 min Scan# 11  
 Delta R.T. -0.024 min  
 Lab File: VX048790.D  
 Acq: 09 Dec 2025 17:11

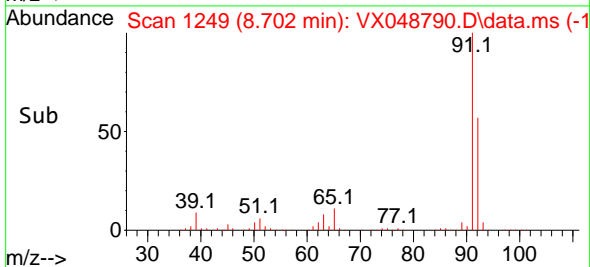
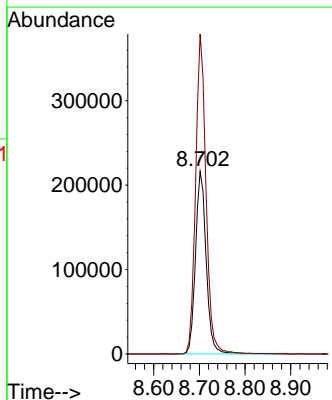
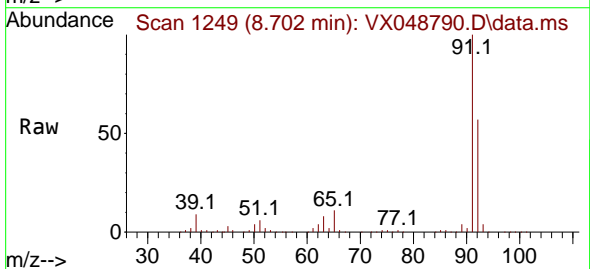
Instrument :  
 MSVOA\_X  
 ClientSampleId :  
 CHASE-N

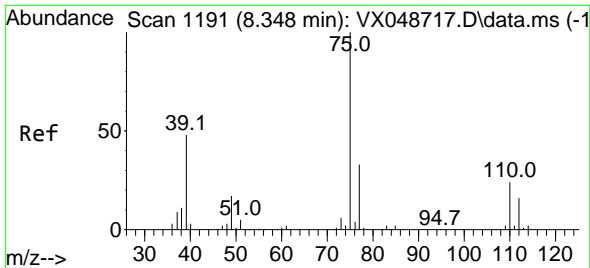
Tgt Ion: 43 Resp: 56540  
 Ion Ratio Lower Upper  
 43 100  
 58 0.0 32.2 48.4#



#52  
 Toluene  
 Concen: 62.415 ug/l  
 RT: 8.702 min Scan# 1249  
 Delta R.T. 0.000 min  
 Lab File: VX048790.D  
 Acq: 09 Dec 2025 17:11

Tgt Ion: 92 Resp: 351856  
 Ion Ratio Lower Upper  
 92 100  
 91 170.8 136.3 204.5

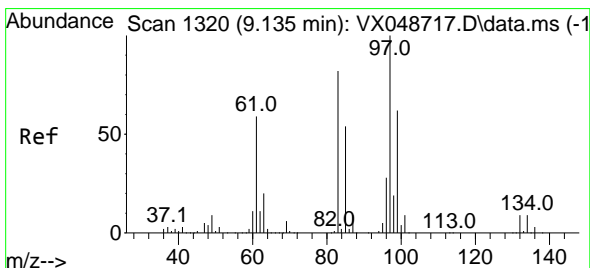
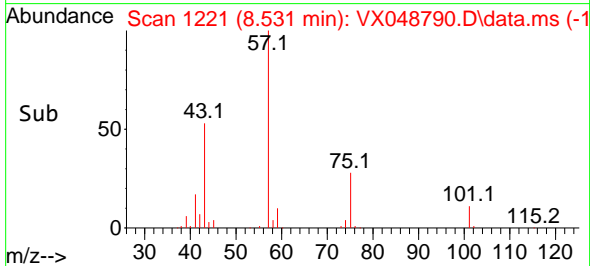
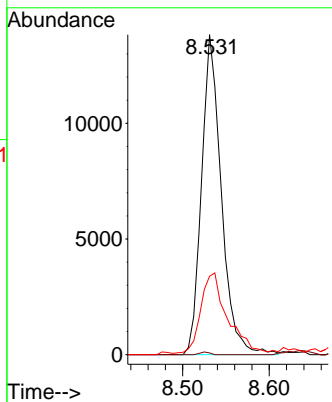
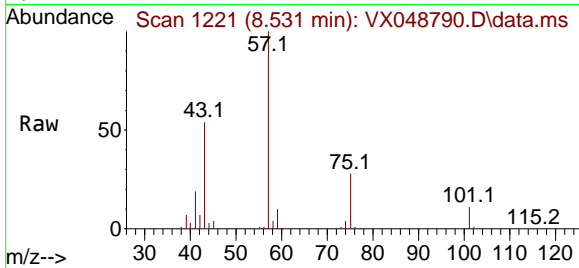




#54  
 cis-1,3-Dichloropropene  
 Concen: 5.816 ug/l  
 RT: 8.531 min Scan# 1191  
 Delta R.T. 0.183 min  
 Lab File: VX048790.D  
 Acq: 09 Dec 2025 17:11

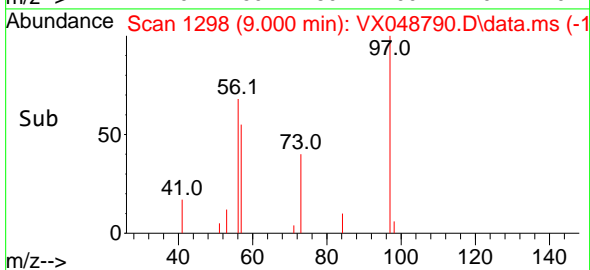
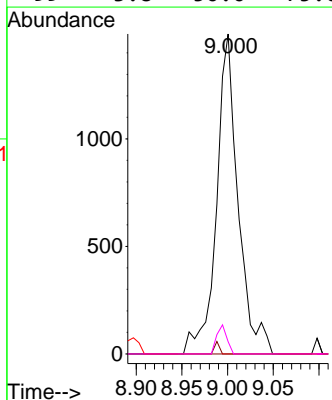
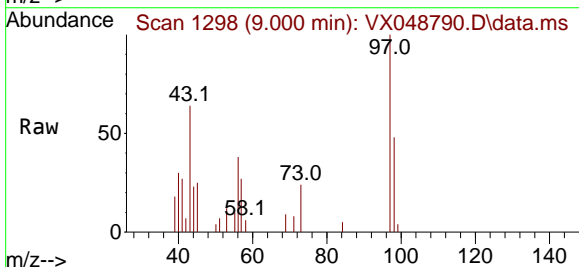
Instrument : MSVOA\_X  
 ClientSampleId : CHASE-N

Tgt Ion	Resp	Lower	Upper
75	21967		
75	100		
77	0.5	26.1	39.1#
39	23.9	38.2	57.4#

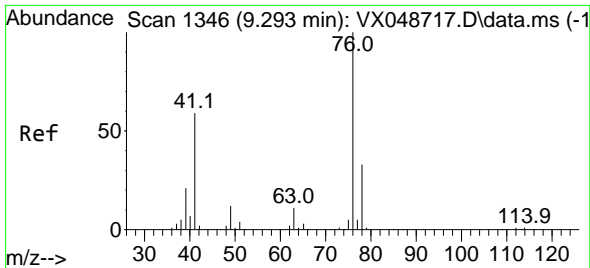


#55  
 1,1,2-Trichloroethane  
 Concen: 1.077 ug/l  
 RT: 9.000 min Scan# 1298  
 Delta R.T. -0.134 min  
 Lab File: VX048790.D  
 Acq: 09 Dec 2025 17:11

Tgt Ion	Resp	Lower	Upper
97	2444		
97	100		
83	0.0	66.0	99.0#
85	0.0	43.2	64.8#
99	3.8	50.0	75.0#



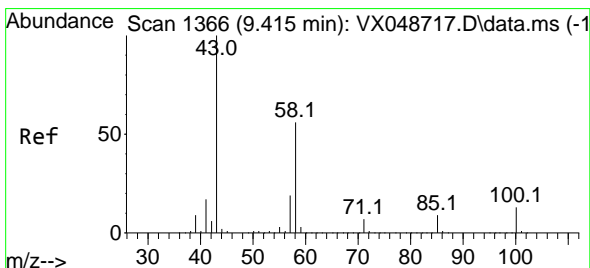
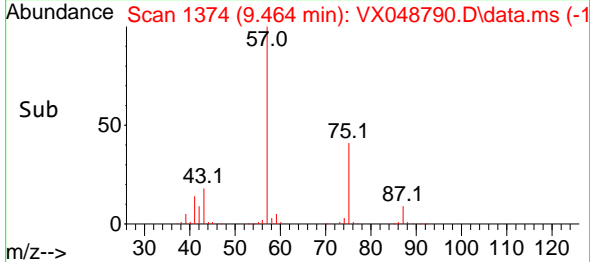
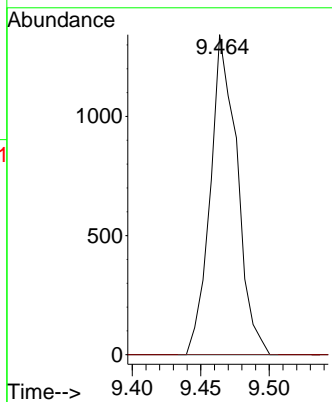
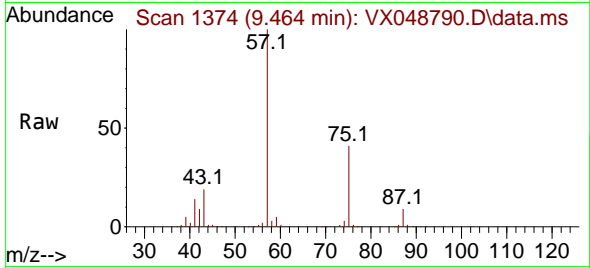




#57  
 1,3-Dichloropropane  
 Concen: 0.486 ug/l  
 RT: 9.464 min Scan# 1374  
 Delta R.T. 0.171 min  
 Lab File: VX048790.D  
 Acq: 09 Dec 2025 17:11

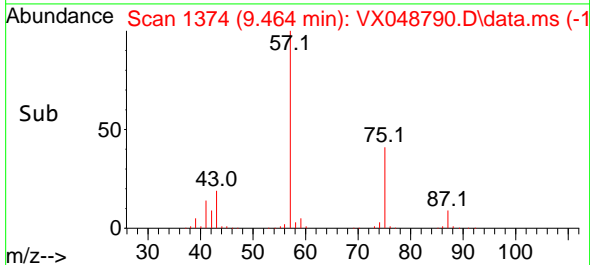
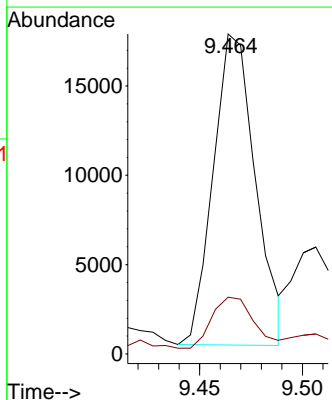
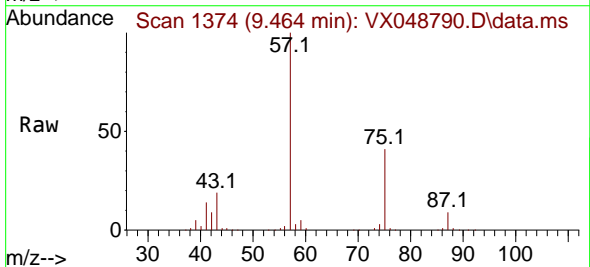
Instrument : MSVOA\_X  
 ClientSampleId : CHASE-N

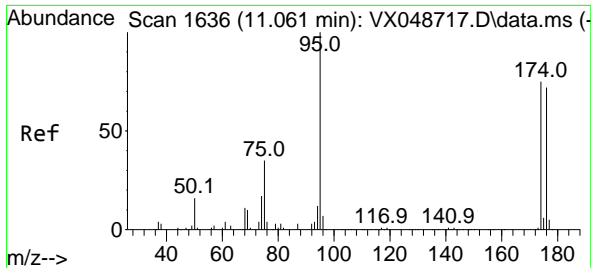
Tgt Ion: 76 Resp: 1832  
 Ion Ratio Lower Upper  
 76 100  
 78 0.0 26.0 39.0#



#59  
 2-Hexanone  
 Concen: 10.041 ug/l  
 RT: 9.464 min Scan# 1374  
 Delta R.T. 0.049 min  
 Lab File: VX048790.D  
 Acq: 09 Dec 2025 17:11

Tgt Ion: 43 Resp: 24964  
 Ion Ratio Lower Upper  
 43 100  
 58 16.3 27.8 83.4#



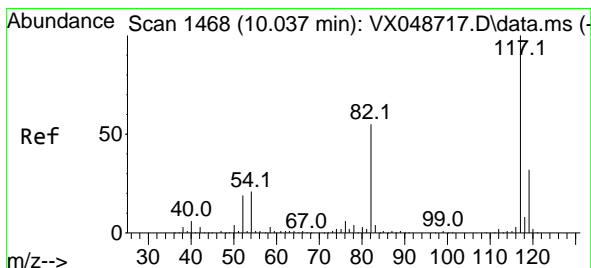
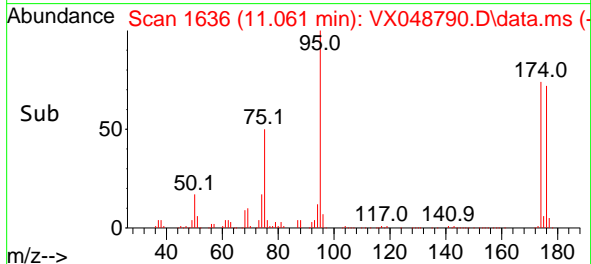
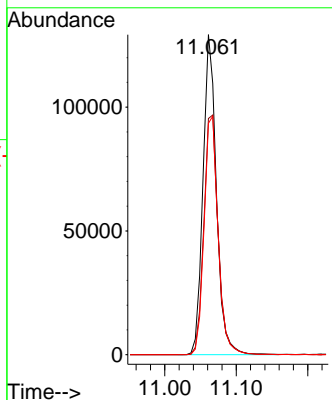
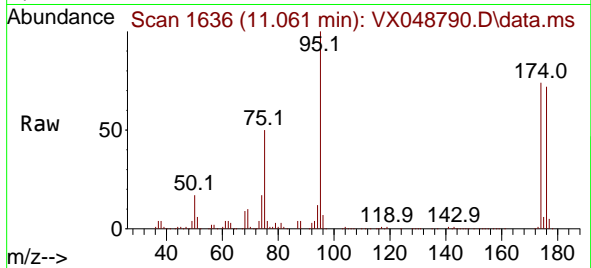


#62  
 4-Bromofluorobenzene  
 Concen: 60.669 ug/l  
 RT: 11.061 min Scan# 11  
 Delta R.T. 0.000 min  
 Lab File: VX048790.D  
 Acq: 09 Dec 2025 17:11

Instrument :  
 MSVOA\_X  
 ClientSampleId :  
 CHASE-N

Tgt Ion: 95 Resp: 168849

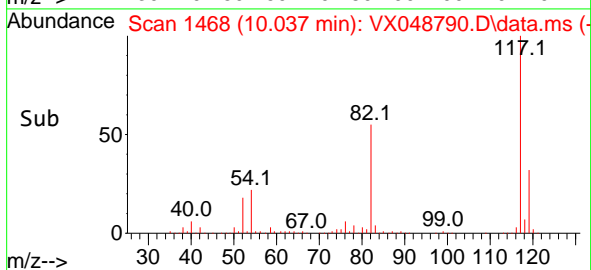
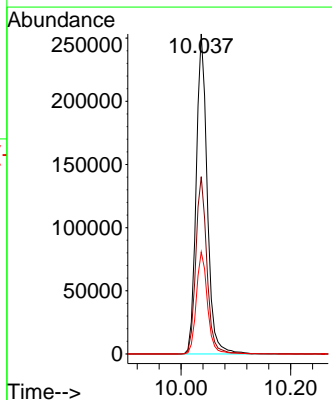
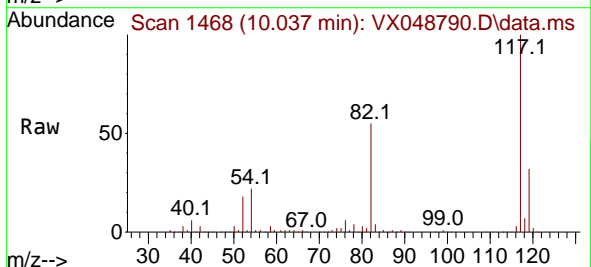
Ion	Ratio	Lower	Upper
95	100		
174	79.9	0.0	157.8
176	77.9	0.0	154.0

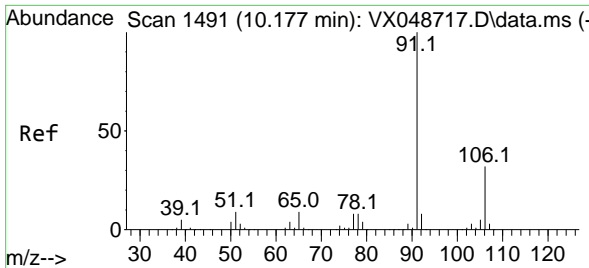


#63  
 Chlorobenzene-d5  
 Concen: 50.000 ug/l  
 RT: 10.037 min Scan# 1468  
 Delta R.T. 0.000 min  
 Lab File: VX048790.D  
 Acq: 09 Dec 2025 17:11

Tgt Ion: 117 Resp: 356325

Ion	Ratio	Lower	Upper
117	100		
82	55.4	44.1	66.1
119	31.8	25.2	37.8

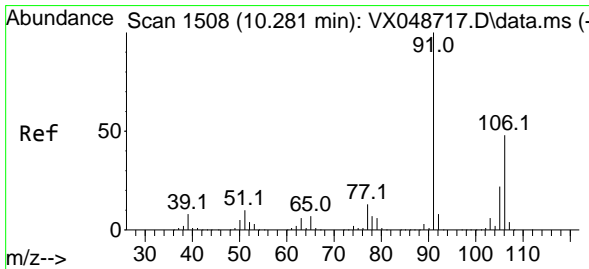
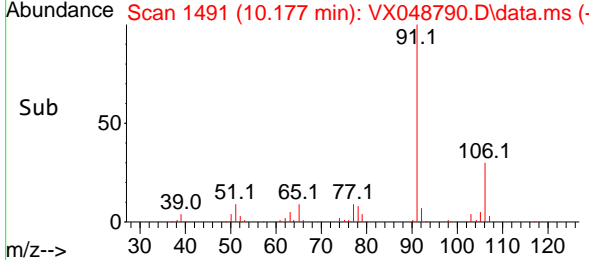
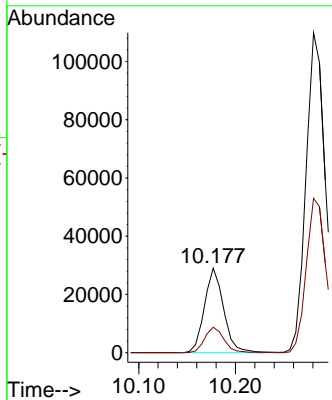
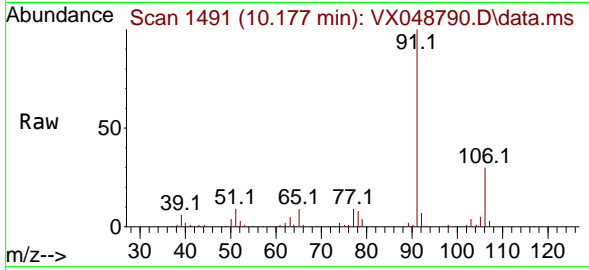




#67  
 Ethyl Benzene  
 Concen: 3.149 ug/l  
 RT: 10.177 min Scan# 1491  
 Delta R.T. 0.000 min  
 Lab File: VX048790.D  
 Acq: 09 Dec 2025 17:11

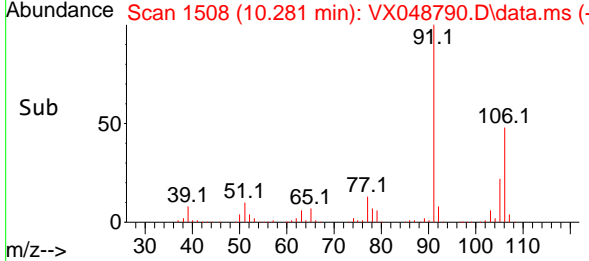
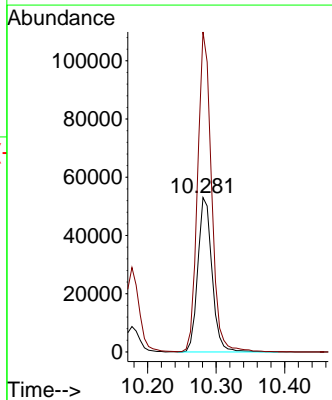
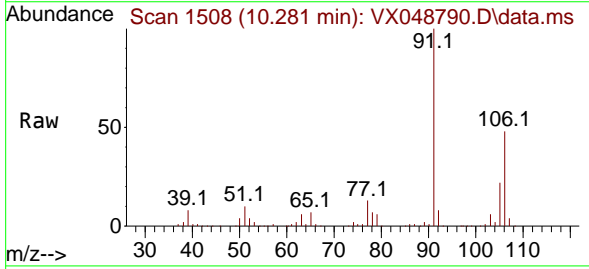
Instrument : MSVOA\_X  
 ClientSampleId : CHASE-N

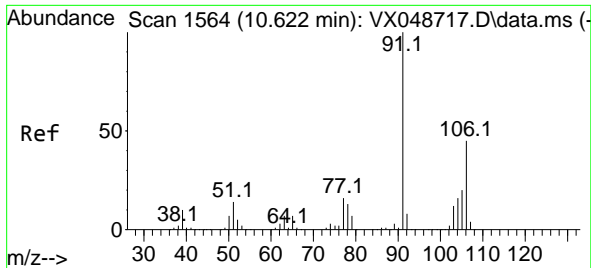
Tgt Ion: 91 Resp: 40078  
 Ion Ratio Lower Upper  
 91 100  
 106 30.1 25.3 37.9



#68  
 m/p-Xylenes  
 Concen: 15.467 ug/l  
 RT: 10.281 min Scan# 1508  
 Delta R.T. 0.000 min  
 Lab File: VX048790.D  
 Acq: 09 Dec 2025 17:11

Tgt Ion: 106 Resp: 76681  
 Ion Ratio Lower Upper  
 106 100  
 91 203.3 164.2 246.4

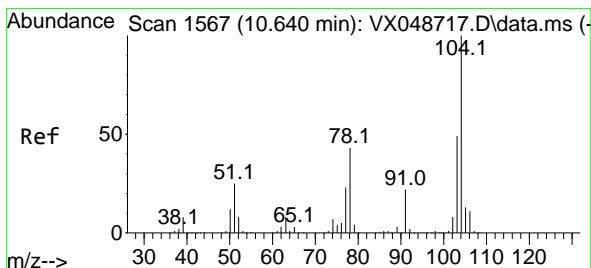
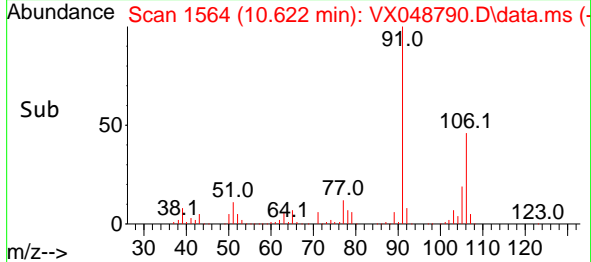
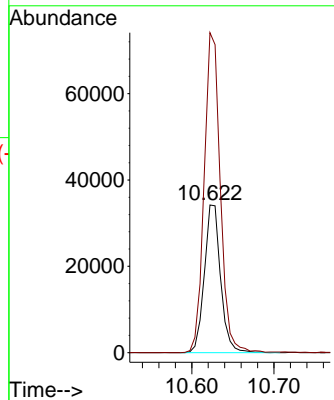
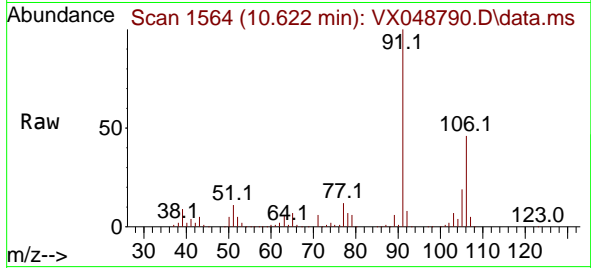




#69  
 o-Xylene  
 Concen: 10.114 ug/l  
 RT: 10.622 min Scan# 1564  
 Delta R.T. 0.000 min  
 Lab File: VX048790.D  
 Acq: 09 Dec 2025 17:11

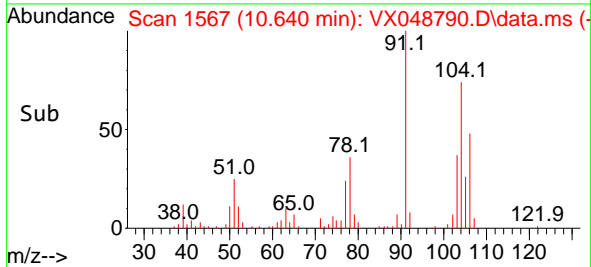
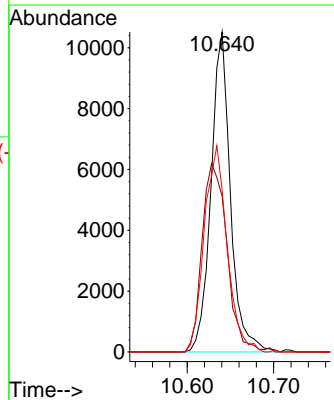
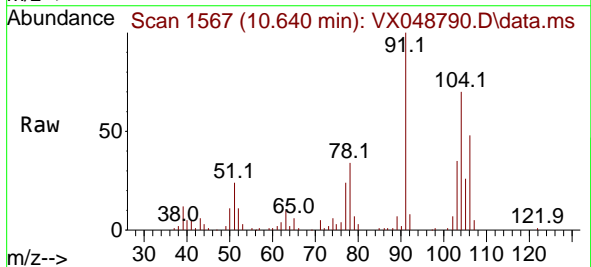
Instrument : MSVOA\_X  
 ClientSampleId : CHASE-N

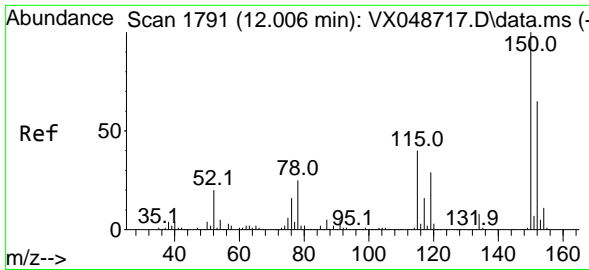
Tgt Ion:106 Resp: 46986  
 Ion Ratio Lower Upper  
 106 100  
 91 215.4 108.1 324.3



#70  
 Styrene  
 Concen: 2.056 ug/l  
 RT: 10.640 min Scan# 1567  
 Delta R.T. 0.000 min  
 Lab File: VX048790.D  
 Acq: 09 Dec 2025 17:11

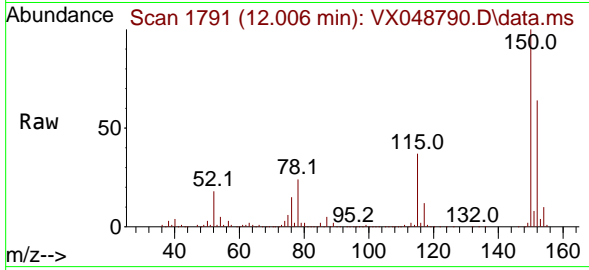
Tgt Ion:104 Resp: 16395  
 Ion Ratio Lower Upper  
 104 100  
 78 75.6 40.6 60.8#  
 103 75.7 43.4 65.2#



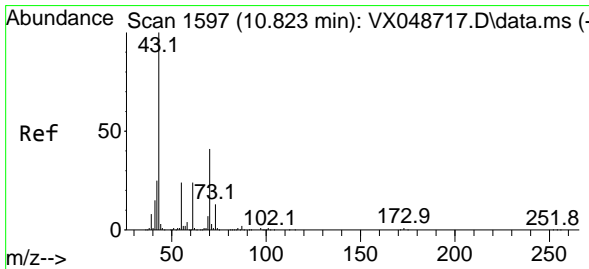
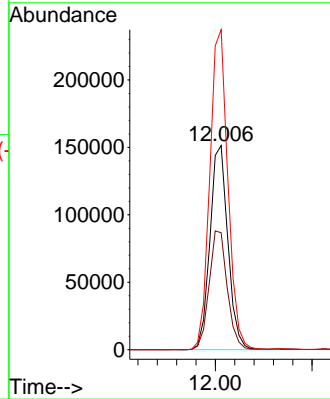
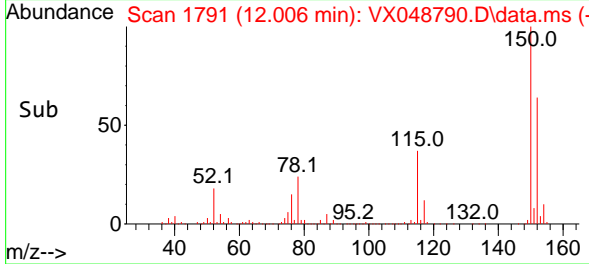


#72  
 1,4-Dichlorobenzene-d4  
 Concen: 50.000 ug/l  
 RT: 12.006 min Scan# 11  
 Delta R.T. 0.000 min  
 Lab File: VX048790.D  
 Acq: 09 Dec 2025 17:11

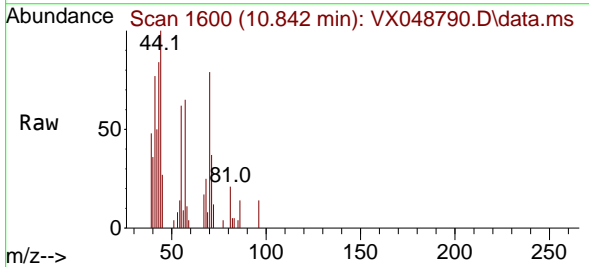
Instrument :  
 MSVOA\_X  
 ClientSampleId :  
 CHASE-N



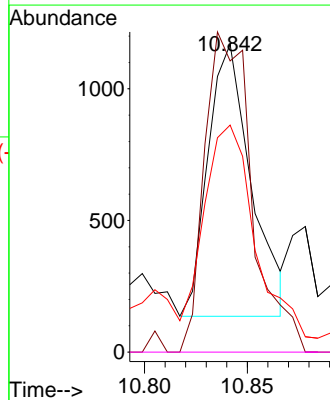
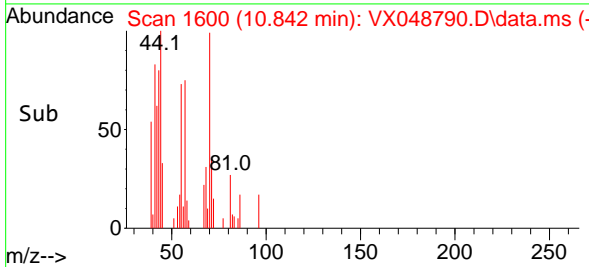
Tgt Ion:152 Resp: 195561  
 Ion Ratio Lower Upper  
 152 100  
 115 59.0 42.1 126.4  
 150 157.4 0.0 347.8

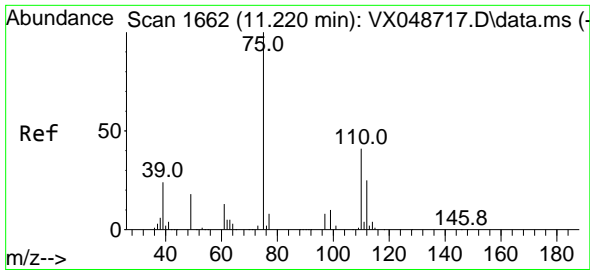


#74  
 N-amy1 acetate  
 Concen: 0.263 ug/l  
 RT: 10.842 min Scan# 1600  
 Delta R.T. 0.018 min  
 Lab File: VX048790.D  
 Acq: 09 Dec 2025 17:11



Tgt Ion: 43 Resp: 1507  
 Ion Ratio Lower Upper  
 43 100  
 70 129.1 33.9 50.9#  
 55 97.1 19.1 28.7#  
 61 0.0 19.0 28.6#

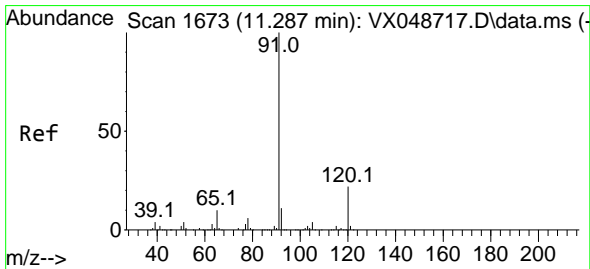
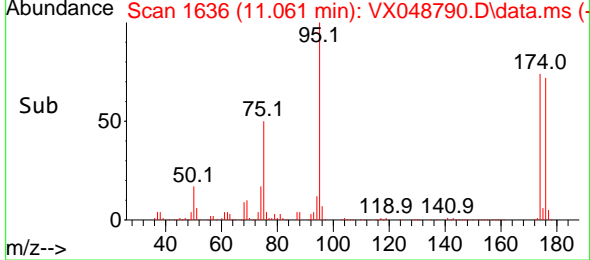
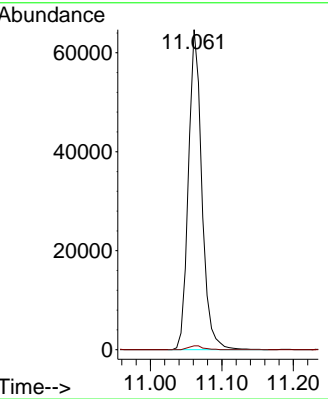
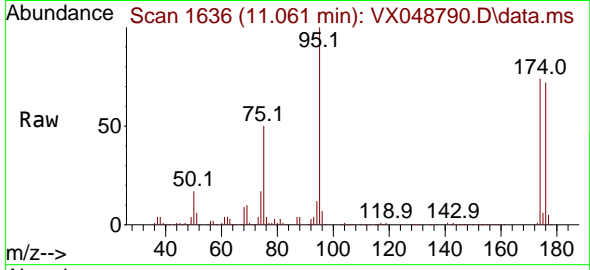




#76  
 1,2,3-Trichloropropane  
 Concen: 23.105 ug/l  
 RT: 11.061 min Scan# 1636  
 Delta R.T. -0.158 min  
 Lab File: VX048790.D  
 Acq: 09 Dec 2025 17:11

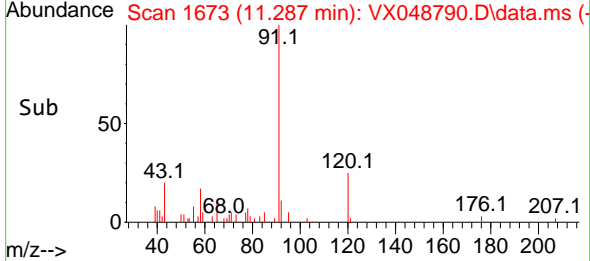
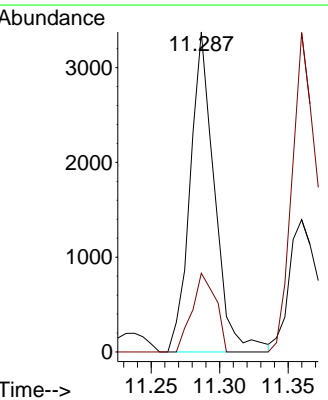
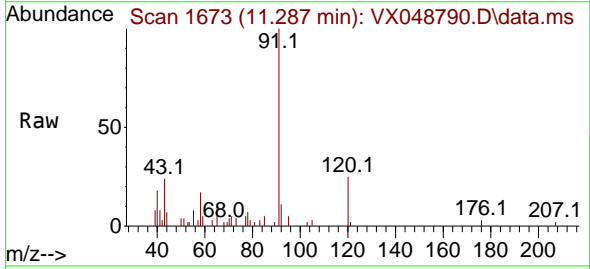
Instrument : MSVOA\_X  
 ClientSampleId : CHASE-N

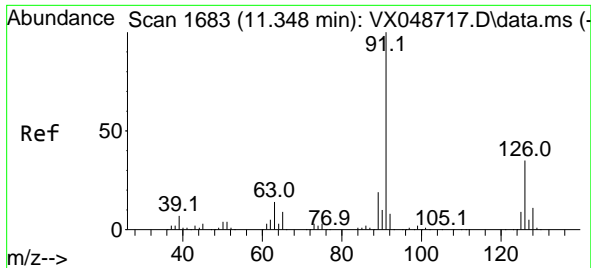
Tgt Ion: 75 Resp: 84158  
 Ion Ratio Lower Upper  
 75 100  
 77 1.4 24.3 73.0#



#78  
 n-propylbenzene  
 Concen: 0.275 ug/l  
 RT: 11.287 min Scan# 1673  
 Delta R.T. 0.000 min  
 Lab File: VX048790.D  
 Acq: 09 Dec 2025 17:11

Tgt Ion: 91 Resp: 4197  
 Ion Ratio Lower Upper  
 91 100  
 120 23.8 11.4 34.2

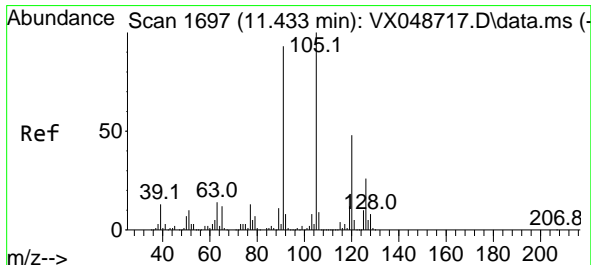
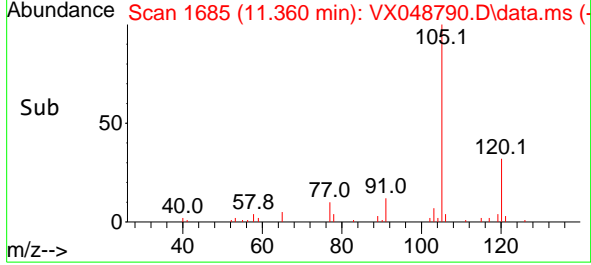
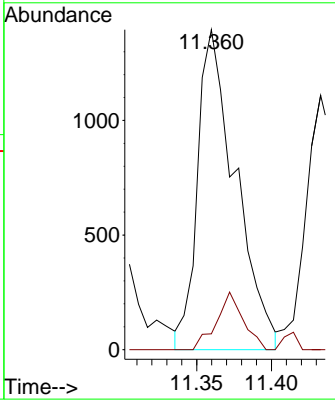
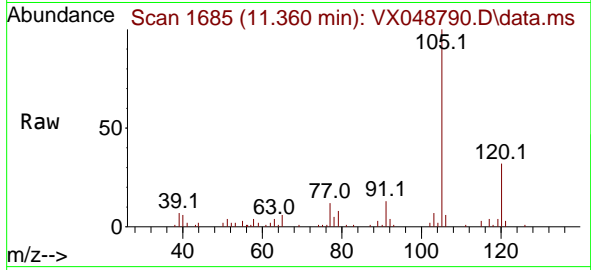




#79  
 2-Chlorotoluene  
 Concen: 0.264 ug/l  
 RT: 11.360 min Scan# 1685  
 Delta R.T. 0.012 min  
 Lab File: VX048790.D  
 Acq: 09 Dec 2025 17:11

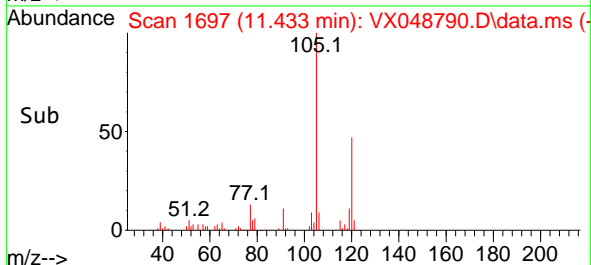
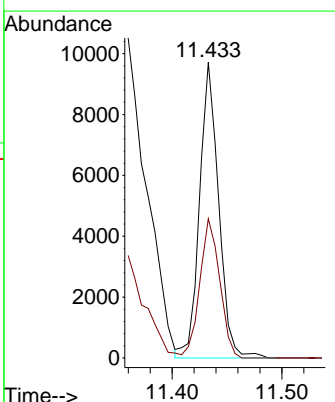
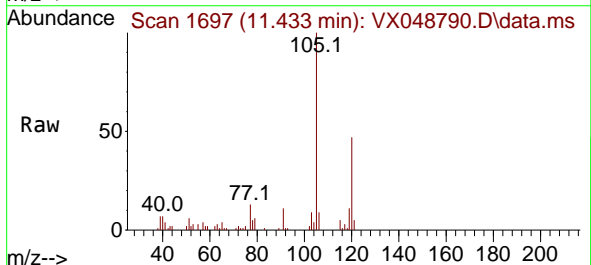
Instrument : MSVOA\_X  
 ClientSampleId : CHASE-N

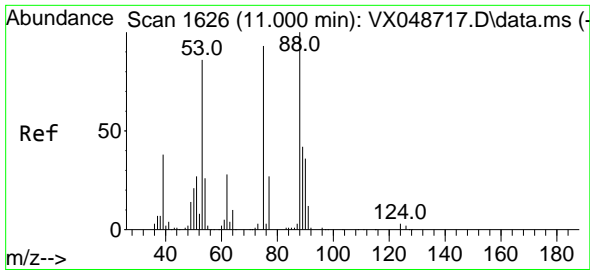
Tgt Ion: 91 Resp: 2458  
 Ion Ratio Lower Upper  
 91 100  
 126 12.7 16.8 50.3#



#80  
 1,3,5-Trimethylbenzene  
 Concen: 1.083 ug/l  
 RT: 11.433 min Scan# 1697  
 Delta R.T. 0.000 min  
 Lab File: VX048790.D  
 Acq: 09 Dec 2025 17:11

Tgt Ion: 105 Resp: 11734  
 Ion Ratio Lower Upper  
 105 100  
 120 49.1 24.4 73.2

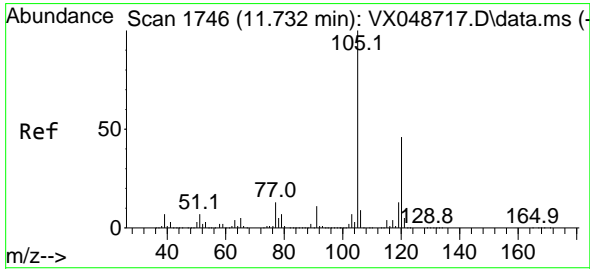
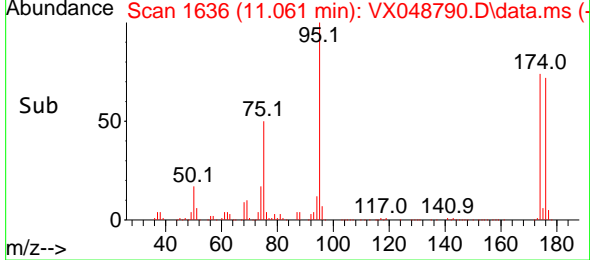
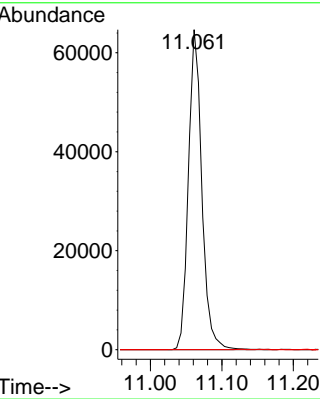
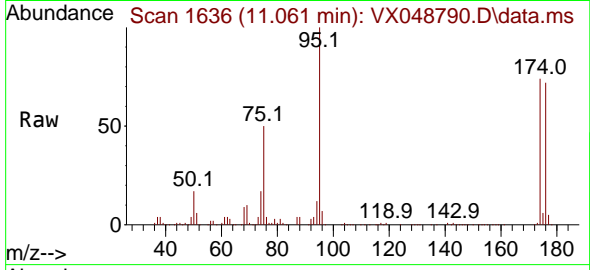




#81  
 trans-1,4-Dichloro-2-butene  
 Concen: 54.884 ug/l  
 RT: 11.061 min Scan# 1106  
 Delta R.T. 0.061 min  
 Lab File: VX048790.D  
 Acq: 09 Dec 2025 17:11

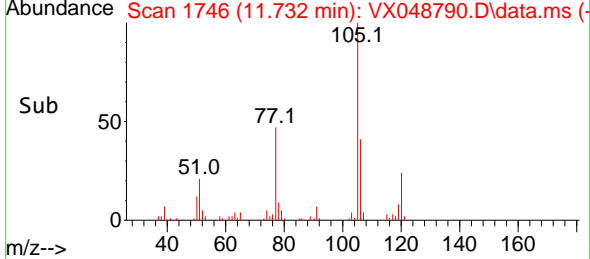
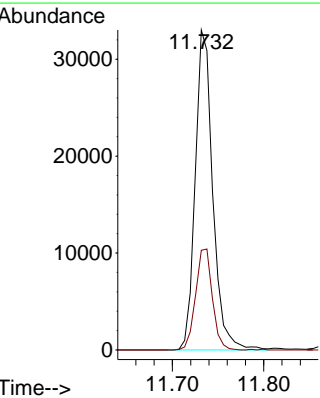
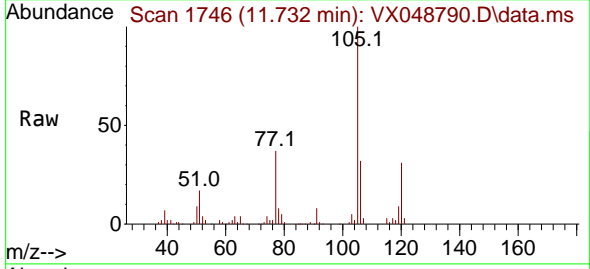
Instrument :  
 MSVOA\_X  
 ClientSampleId :  
 CHASE-N

Tgt Ion: 75 Resp: 84158  
 Ion Ratio Lower Upper  
 75 100  
 53 0.0 79.9 119.9#  
 89 0.0 67.1 100.7#

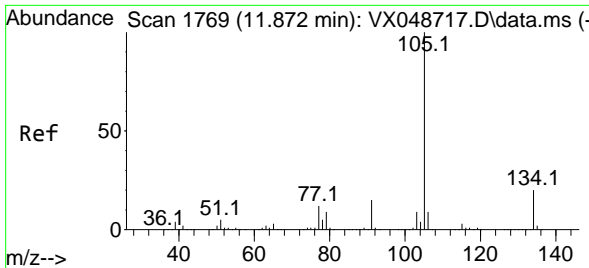


#84  
 1,2,4-Trimethylbenzene  
 Concen: 4.028 ug/l  
 RT: 11.732 min Scan# 1746  
 Delta R.T. 0.000 min  
 Lab File: VX048790.D  
 Acq: 09 Dec 2025 17:11

Tgt Ion: 105 Resp: 44016  
 Ion Ratio Lower Upper  
 105 100  
 120 30.2 22.3 66.8



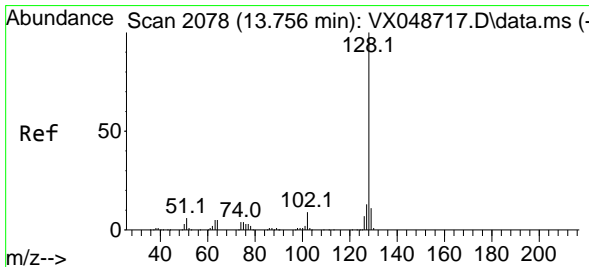
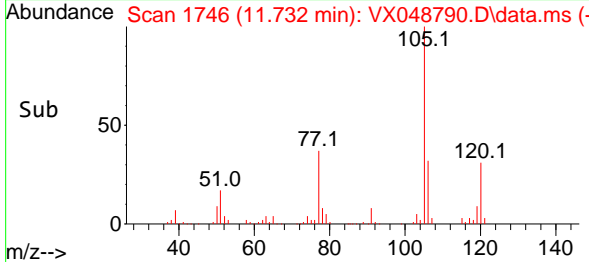
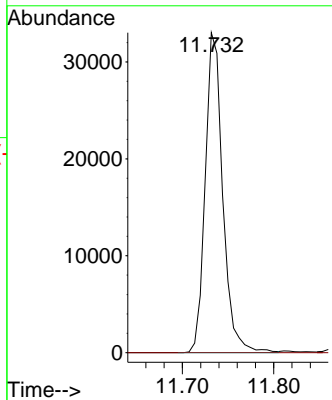
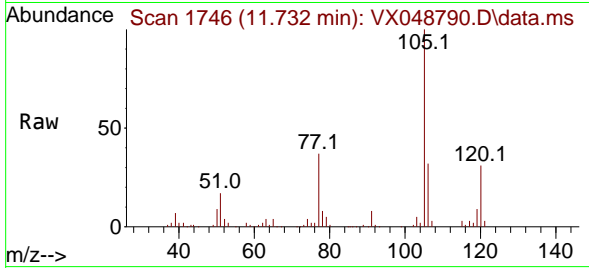




#85  
 sec-Butylbenzene  
 Concen: 3.227 ug/l  
 RT: 11.732 min Scan# 11  
 Delta R.T. -0.140 min  
 Lab File: VX048790.D  
 Acq: 09 Dec 2025 17:11

Instrument :  
 MSVOA\_X  
 ClientSampleId :  
 CHASE-N

Tgt Ion:105 Resp: 44016  
 Ion Ratio Lower Upper  
 105 100  
 134 0.0 9.8 29.5#



#95  
 Naphthalene  
 Concen: 27.036 ug/l  
 RT: 13.756 min Scan# 2078  
 Delta R.T. 0.000 min  
 Lab File: VX048790.D  
 Acq: 09 Dec 2025 17:11

Tgt Ion:128 Resp: 295930  
 Ion Ratio Lower Upper  
 128 100  
 127 12.7 10.2 15.2  
 129 10.9 8.6 13.0

