

Data Path : Z:\voasrv\HPCHEM1\MSVOA_X\Data\VX120925\
 Data File : VX048791.D
 Acq On : 09 Dec 2025 17:31
 Operator : JC/MD
 Sample : IBLK
 Misc : 5.0mL/MSVOA_X/WATER
 ALS Vial : 25 Sample Multiplier: 1

Instrument :
 MSVOA_X
 ClientSampleId :

Quant Time: Dec 10 00:29:02 2025
 Quant Method : Z:\voasrv\HPCHEM1\MSVOA_X\Method\82X120425W.M
 Quant Title : SW846 8260
 QLast Update : Fri Dec 05 03:27:34 2025
 Response via : Initial Calibration

Compound	R.T.	QIon	Response	Conc	Units	Dev(Min)

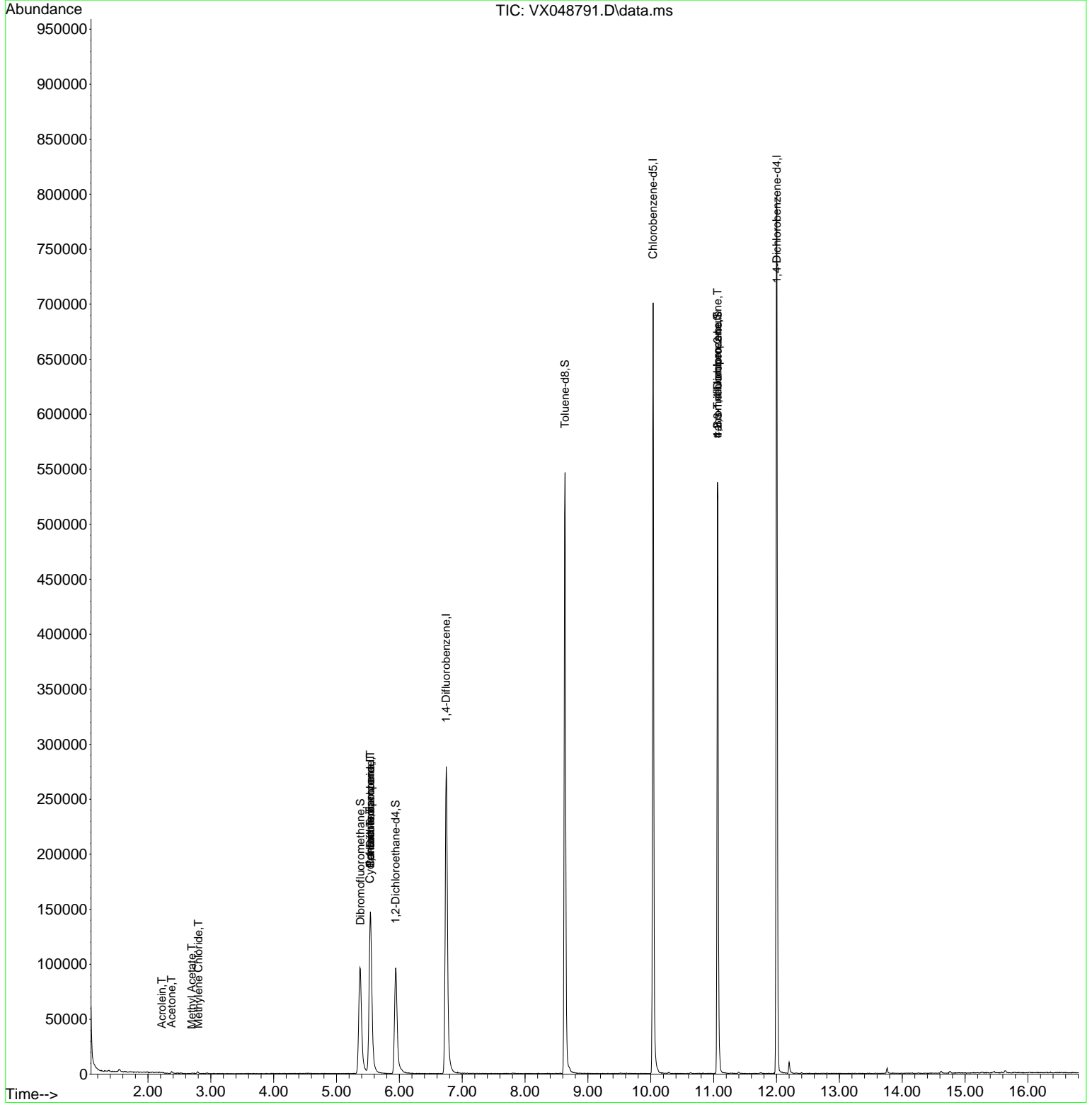
Internal Standards						
1) Pentafluorobenzene	5.538	168	153221	50.000	ug/l	0.00
34) 1,4-Difluorobenzene	6.745	114	318860	50.000	ug/l	0.00
63) Chlorobenzene-d5	10.037	117	342650	50.000	ug/l	0.00
72) 1,4-Dichlorobenzene-d4	12.006	152	185562	50.000	ug/l	0.00
System Monitoring Compounds						
33) 1,2-Dichloroethane-d4	5.940	65	107922	52.478	ug/l	0.00
Spiked Amount	50.000	Range 78 - 117	Recovery	=	104.960%	
35) Dibromofluoromethane	5.379	113	98936	45.064	ug/l	0.00
Spiked Amount	50.000	Range 75 - 124	Recovery	=	90.120%	
50) Toluene-d8	8.635	98	354966	46.124	ug/l	0.00
Spiked Amount	50.000	Range 92 - 112	Recovery	=	92.240%	
62) 4-Bromofluorobenzene	11.061	95	158158	59.598	ug/l	0.00
Spiked Amount	50.000	Range 83 - 123	Recovery	=	119.200%	
Target Compounds						
					Qvalue	
13) Acrolein	2.221	56	131	40.520	ug/l #	15
16) Acetone	2.374	43	2495	3.169	ug/l	95
18) Methyl Acetate	2.697	43	774	0.349	ug/l #	66
20) Methylene Chloride	2.800	84	658	0.334	ug/l #	83
31) Cyclohexane	5.532	56	2975	1.070	ug/l #	1
36) 1,1-Dichloropropene	5.538	75	11746	3.906	ug/l #	47
38) Carbon Tetrachloride	5.538	117	15942	4.680	ug/l #	16
76) 1,2,3-Trichloropropane	11.061	75	78864	22.818	ug/l #	30
81) trans-1,4-Dichloro-2-b...	11.061	75	78864	54.203	ug/l #	3
95) Naphthalene	13.762	128	4027	Below Cal	#	97

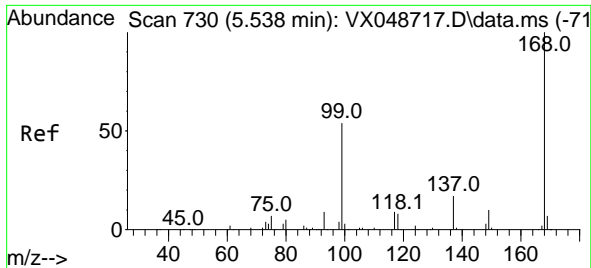
(#) = qualifier out of range (m) = manual integration (+) = signals summed

Data Path : Z:\voasrv\HPCHEM1\MSVOA_X\Data\VX120925\
 Data File : VX048791.D
 Acq On : 09 Dec 2025 17:31
 Operator : JC/MD
 Sample : IBLK
 Misc : 5.0mL/MSVOA_X/WATER
 ALS Vial : 25 Sample Multiplier: 1

Instrument :
 MSVOA_X
 ClientSampleId :

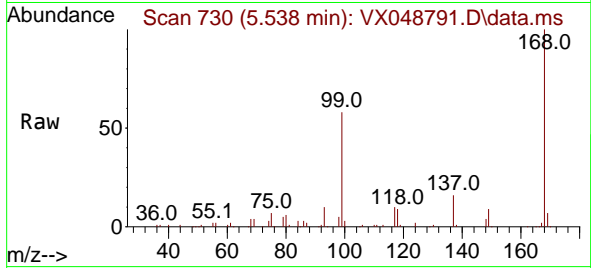
Quant Time: Dec 10 00:29:02 2025
 Quant Method : Z:\voasrv\HPCHEM1\MSVOA_X\Method\82X120425W.M
 Quant Title : SW846 8260
 QLast Update : Fri Dec 05 03:27:34 2025
 Response via : Initial Calibration



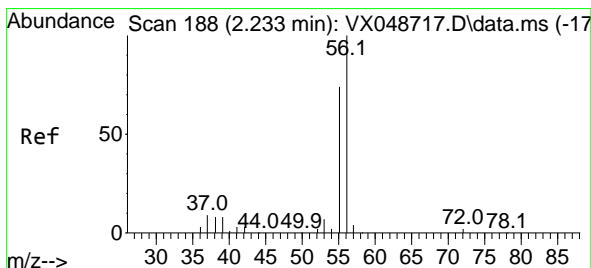
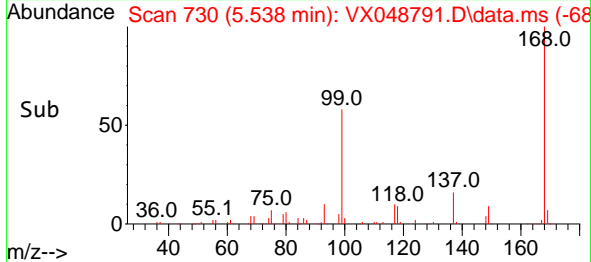
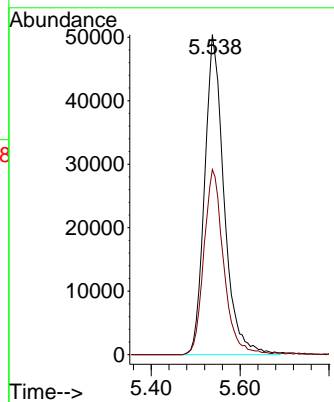


#1
 Pentafluorobenzene
 Concen: 50.000 ug/l
 RT: 5.538 min Scan# 71
 Delta R.T. -0.000 min
 Lab File: VX048791.D
 Acq: 09 Dec 2025 17:31

Instrument :
 MSVOA_X
 ClientSampleId :

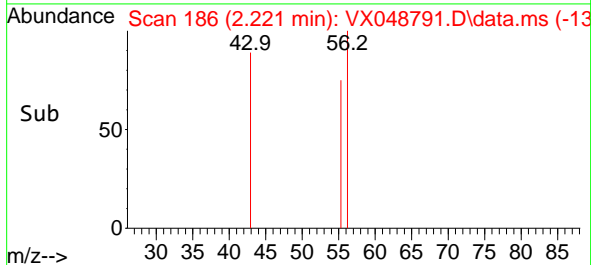
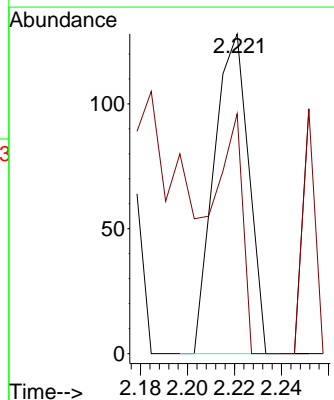
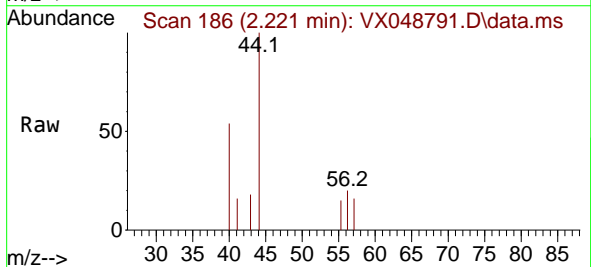


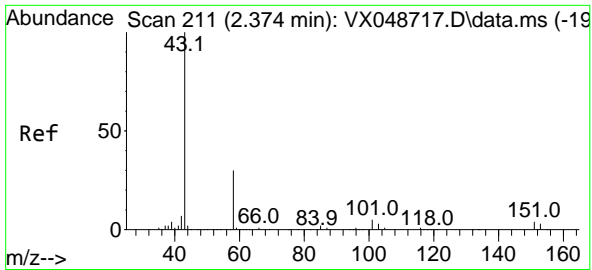
Tgt Ion:168 Resp: 153221
 Ion Ratio Lower Upper
 168 100
 99 57.8 44.2 66.4



#13
 Acrolein
 Concen: 40.520 ug/l
 RT: 2.221 min Scan# 186
 Delta R.T. -0.012 min
 Lab File: VX048791.D
 Acq: 09 Dec 2025 17:31

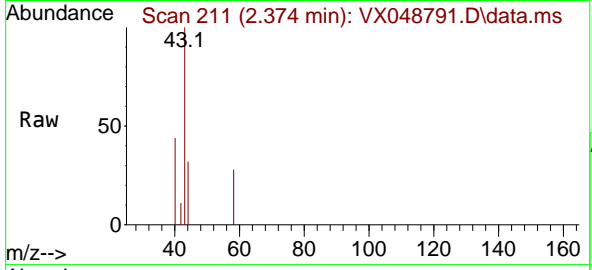
Tgt Ion: 56 Resp: 131
 Ion Ratio Lower Upper
 56 100
 55 0.0 55.8 83.6#



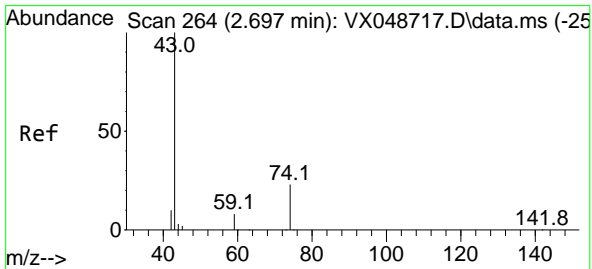
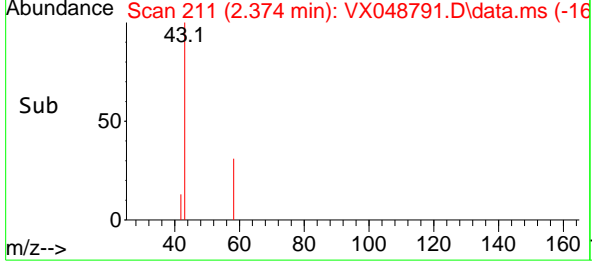
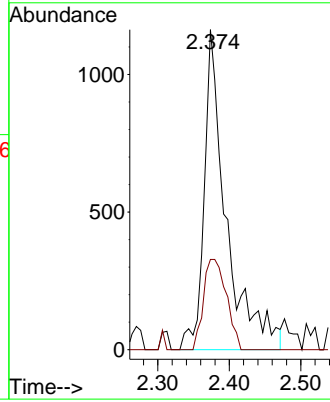


#16
 Acetone
 Concen: 3.169 ug/l
 RT: 2.374 min Scan# 211
 Delta R.T. 0.000 min
 Lab File: VX048791.D
 Acq: 09 Dec 2025 17:31

Instrument :
 MSVOA_X
 ClientSampleId :

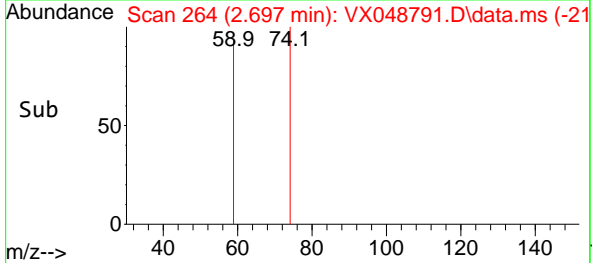
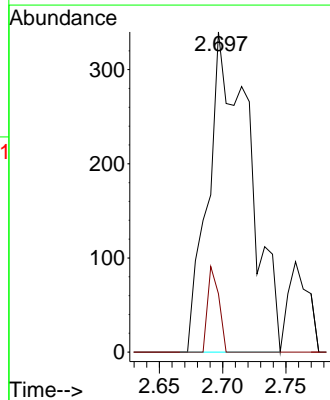
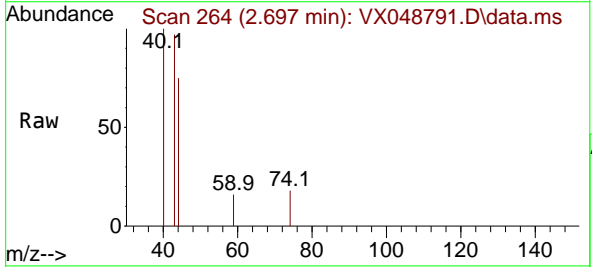


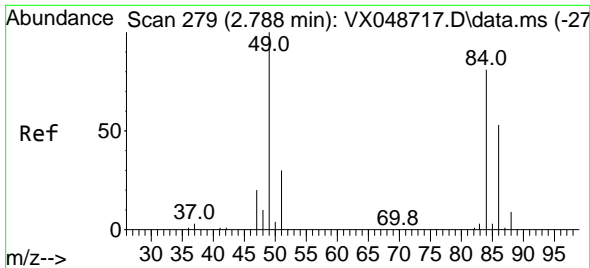
Tgt Ion: 43 Resp: 2495
 Ion Ratio Lower Upper
 43 100
 58 28.2 25.0 37.4



#18
 Methyl Acetate
 Concen: 0.349 ug/l
 RT: 2.697 min Scan# 264
 Delta R.T. -0.000 min
 Lab File: VX048791.D
 Acq: 09 Dec 2025 17:31

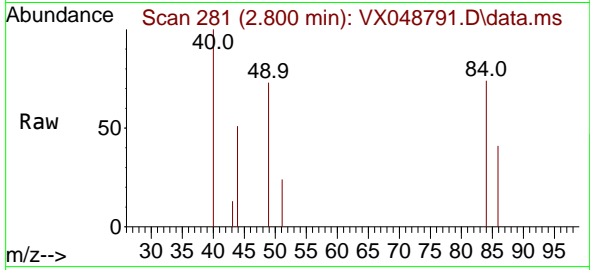
Tgt Ion: 43 Resp: 774
 Ion Ratio Lower Upper
 43 100
 74 7.2 19.2 28.8#





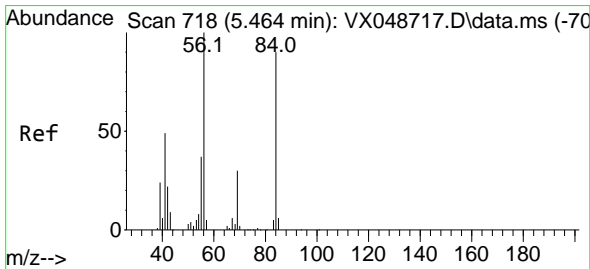
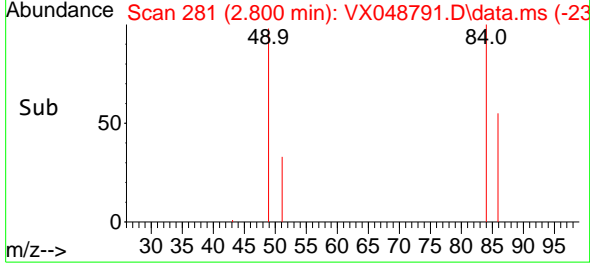
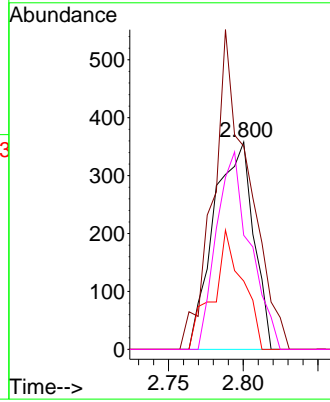
#20
 Methylene Chloride
 Concen: 0.334 ug/l
 RT: 2.800 min Scan# 21
 Delta R.T. 0.012 min
 Lab File: VX048791.D
 Acq: 09 Dec 2025 17:31

Instrument :
 MSVOA_X
 ClientSampleId :



Tgt Ion: 84 Resp: 658

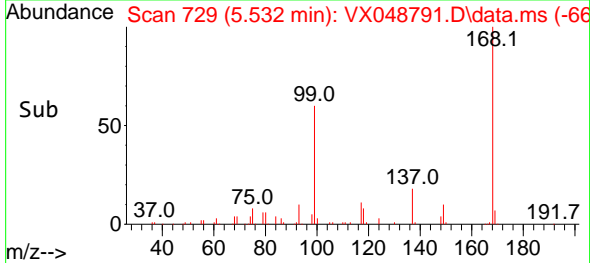
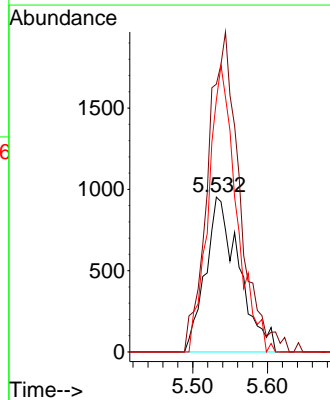
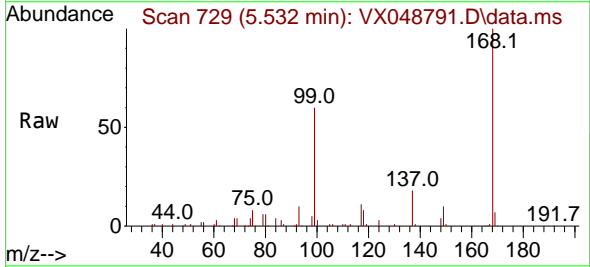
Ion	Ratio	Lower	Upper
84	100		
49	98.0	98.7	148.1#
51	33.0	29.4	44.2
86	55.0	52.5	78.7

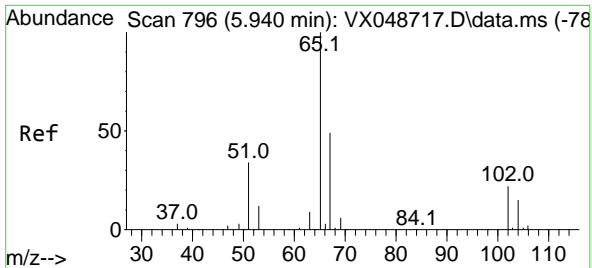


#31
 Cyclohexane
 Concen: 1.070 ug/l
 RT: 5.532 min Scan# 729
 Delta R.T. 0.067 min
 Lab File: VX048791.D
 Acq: 09 Dec 2025 17:31

Tgt Ion: 56 Resp: 2975

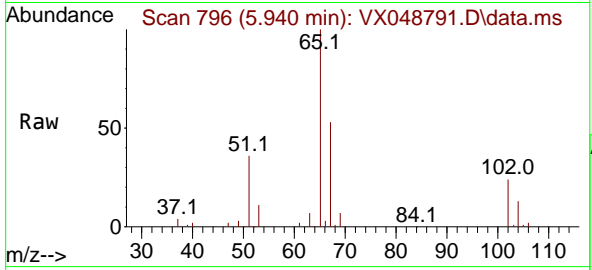
Ion	Ratio	Lower	Upper
56	100		
69	172.8	24.2	36.2#
84	162.6	72.1	108.1#



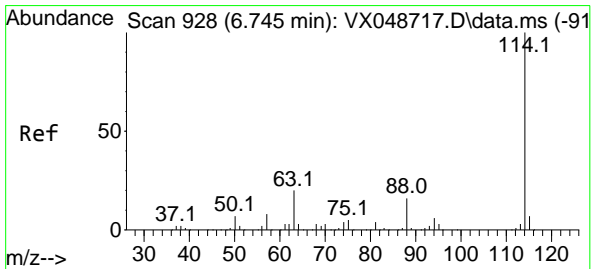
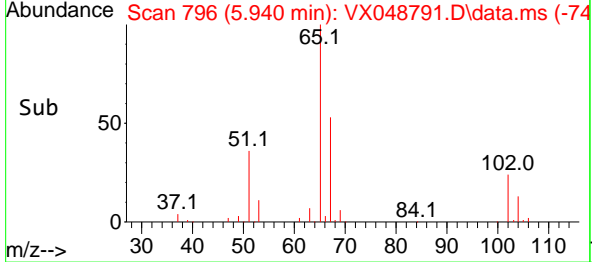
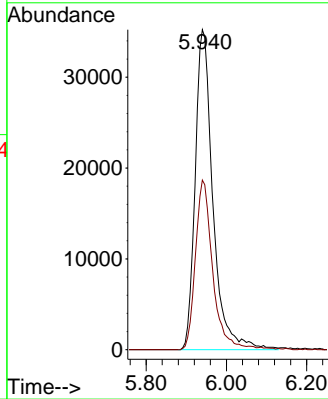


#33
 1,2-Dichloroethane-d4
 Concen: 52.478 ug/l
 RT: 5.940 min Scan# 796
 Delta R.T. 0.000 min
 Lab File: VX048791.D
 Acq: 09 Dec 2025 17:31

Instrument : MSVOA_X
 ClientSampleId :

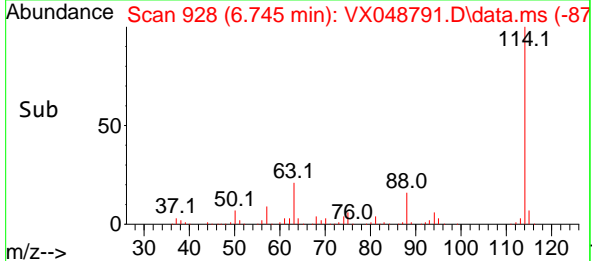
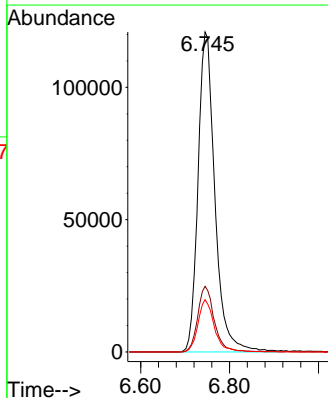
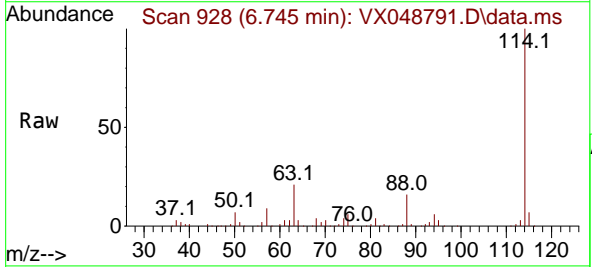


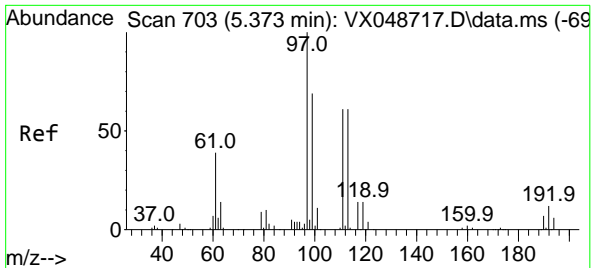
Tgt Ion: 65 Resp: 107922
 Ion Ratio Lower Upper
 65 100
 67 51.9 0.0 107.4



#34
 1,4-Difluorobenzene
 Concen: 50.000 ug/l
 RT: 6.745 min Scan# 928
 Delta R.T. 0.000 min
 Lab File: VX048791.D
 Acq: 09 Dec 2025 17:31

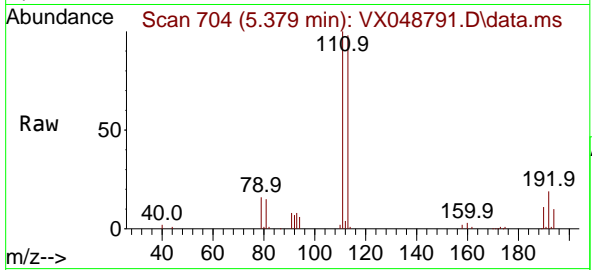
Tgt Ion: 114 Resp: 318860
 Ion Ratio Lower Upper
 114 100
 63 20.5 0.0 39.0
 88 16.4 0.0 31.8



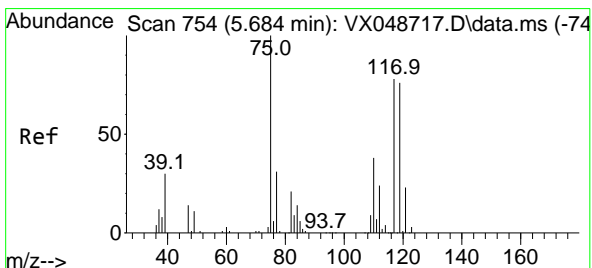
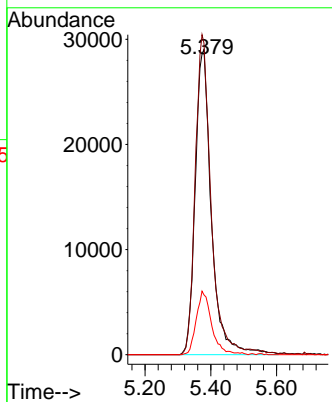
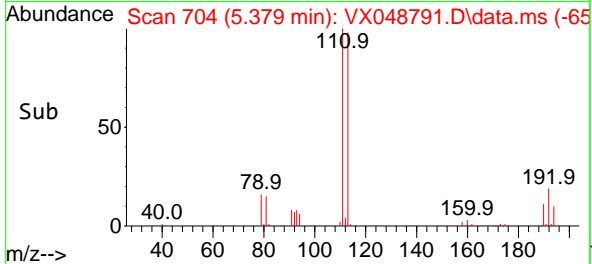


#35
 Dibromofluoromethane
 Concen: 45.064 ug/l
 RT: 5.379 min Scan# 703
 Delta R.T. 0.006 min
 Lab File: VX048791.D
 Acq: 09 Dec 2025 17:31

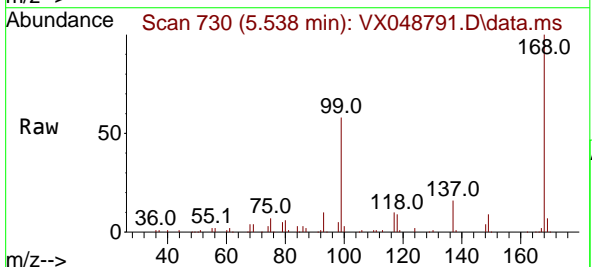
Instrument : MSVOA_X
 ClientSampleId :



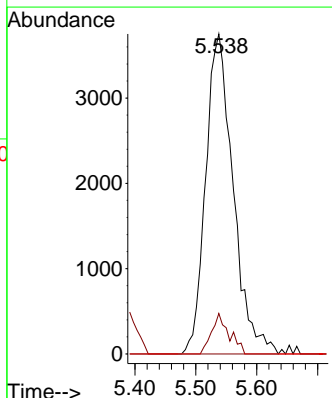
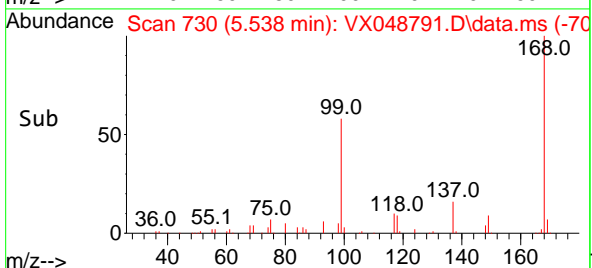
Tgt Ion:113 Resp: 98936
 Ion Ratio Lower Upper
 113 100
 111 101.1 79.5 119.3
 192 19.6 16.1 24.1

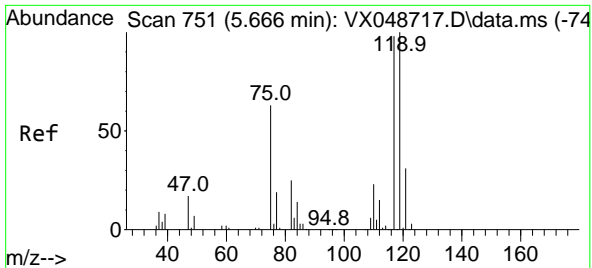


#36
 1,1-Dichloropropene
 Concen: 3.906 ug/l
 RT: 5.538 min Scan# 730
 Delta R.T. -0.146 min
 Lab File: VX048791.D
 Acq: 09 Dec 2025 17:31



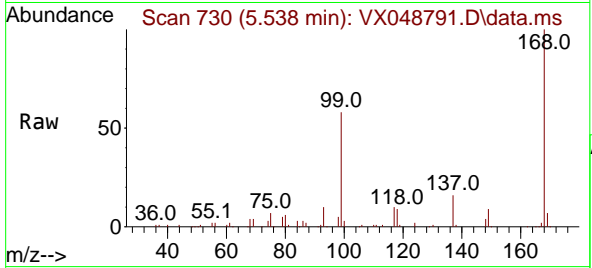
Tgt Ion: 75 Resp: 11746
 Ion Ratio Lower Upper
 75 100
 110 8.1 18.6 55.8#
 77 0.0 25.3 37.9#



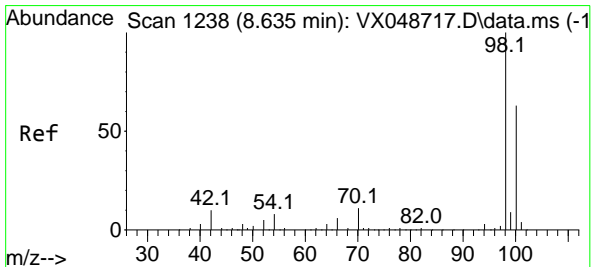
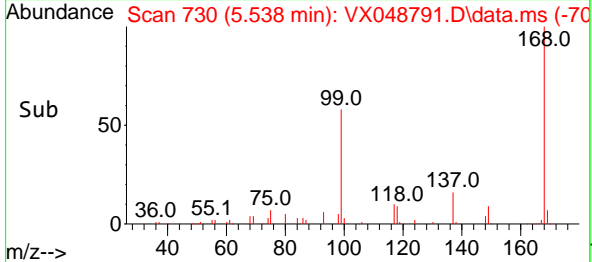
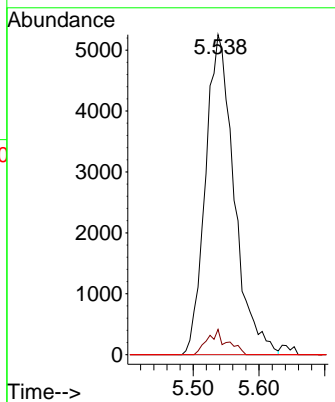


#38
 Carbon Tetrachloride
 Concen: 4.680 ug/l
 RT: 5.538 min Scan# 71
 Delta R.T. -0.128 min
 Lab File: VX048791.D
 Acq: 09 Dec 2025 17:31

Instrument :
 MSVOA_X
 ClientSampleId :

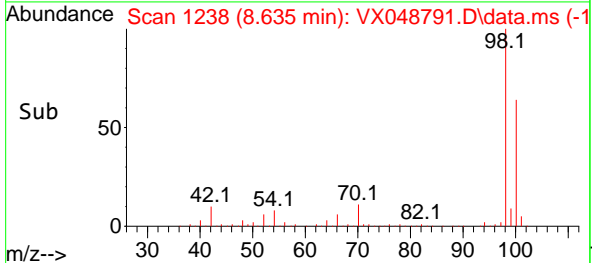
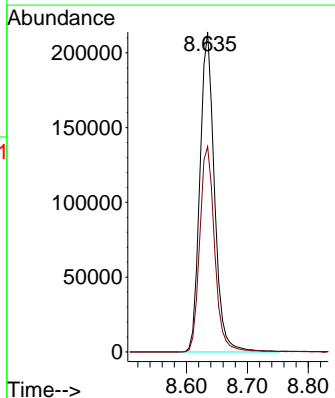
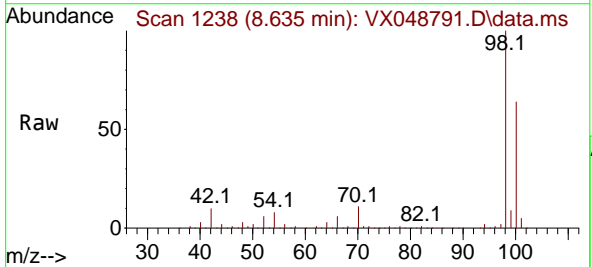


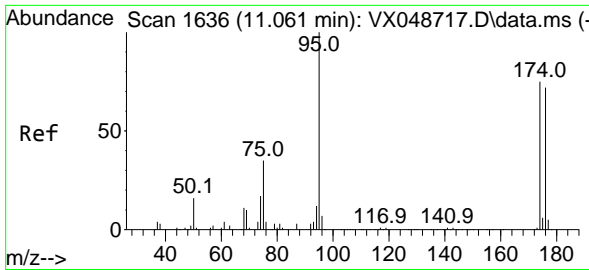
Tgt Ion:117 Resp: 15942
 Ion Ratio Lower Upper
 117 100
 119 7.9 80.5 120.7#
 121 0.0 25.4 38.0#



#50
 Toluene-d8
 Concen: 46.124 ug/l
 RT: 8.635 min Scan# 1238
 Delta R.T. 0.000 min
 Lab File: VX048791.D
 Acq: 09 Dec 2025 17:31

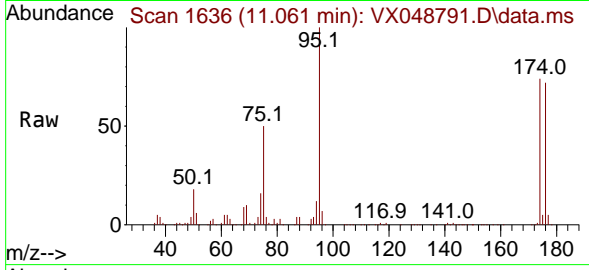
Tgt Ion: 98 Resp: 354966
 Ion Ratio Lower Upper
 98 100
 100 65.9 53.4 80.0



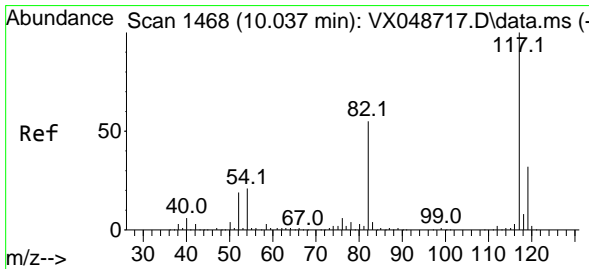
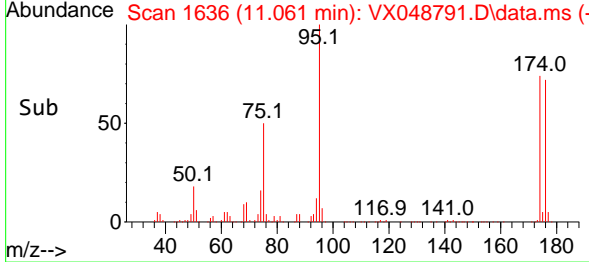
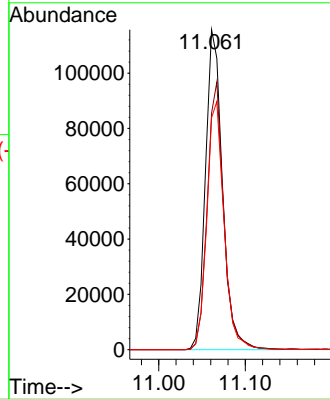


#62
 4-Bromofluorobenzene
 Concen: 59.598 ug/l
 RT: 11.061 min Scan# 1
 Delta R.T. 0.000 min
 Lab File: VX048791.D
 Acq: 09 Dec 2025 17:31

Instrument :
 MSVOA_X
 ClientSampleId :

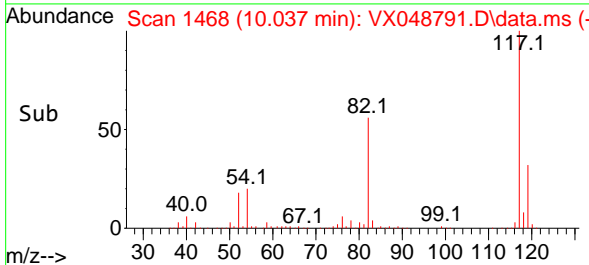
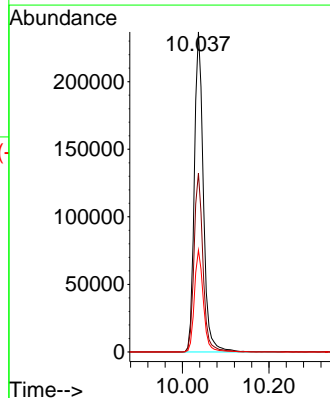
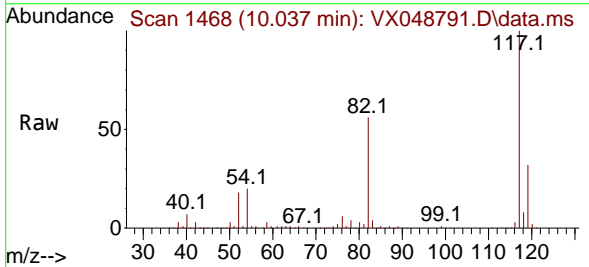


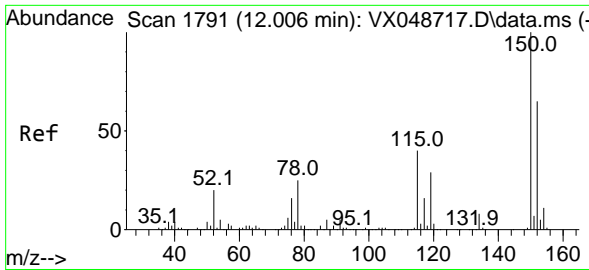
Tgt Ion: 95 Resp: 158158
 Ion Ratio Lower Upper
 95 100
 174 81.9 0.0 157.8
 176 78.3 0.0 154.0



#63
 Chlorobenzene-d5
 Concen: 50.000 ug/l
 RT: 10.037 min Scan# 1468
 Delta R.T. 0.000 min
 Lab File: VX048791.D
 Acq: 09 Dec 2025 17:31

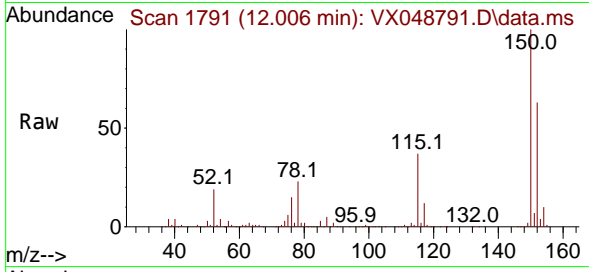
Tgt Ion: 117 Resp: 342650
 Ion Ratio Lower Upper
 117 100
 82 55.9 44.1 66.1
 119 31.8 25.2 37.8



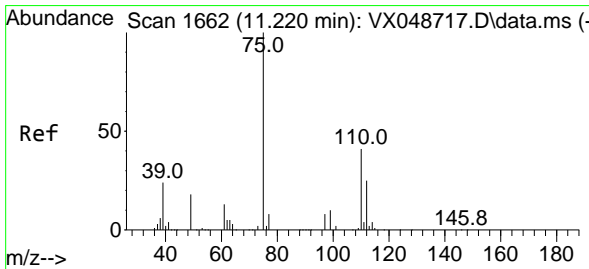
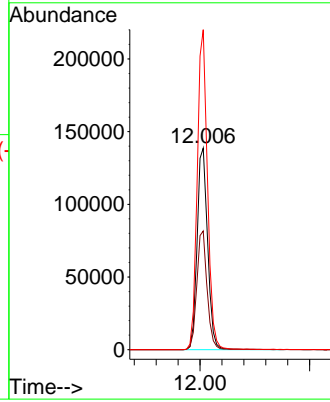
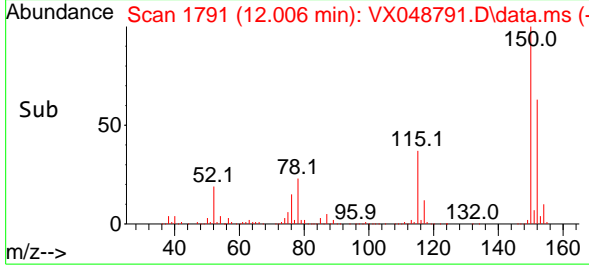


#72
 1,4-Dichlorobenzene-d4
 Concen: 50.000 ug/l
 RT: 12.006 min Scan# 1
 Delta R.T. 0.000 min
 Lab File: VX048791.D
 Acq: 09 Dec 2025 17:31

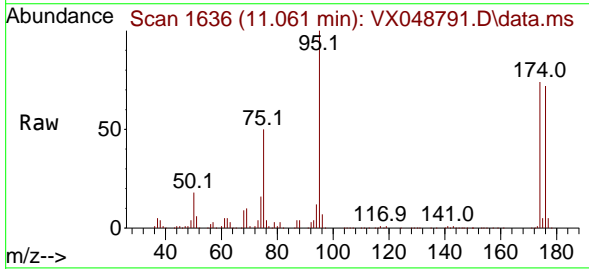
Instrument :
 MSVOA_X
 ClientSampleId :



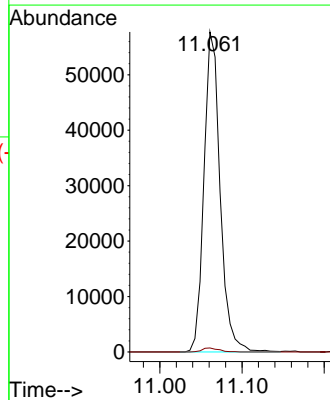
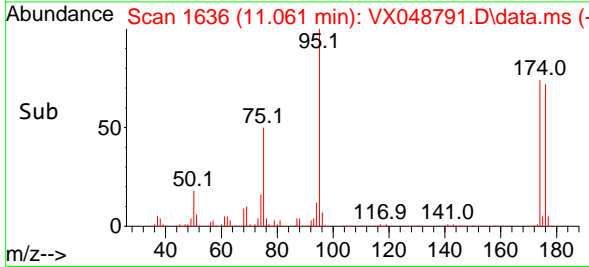
Tgt Ion:152 Resp: 185562
 Ion Ratio Lower Upper
 152 100
 115 58.1 42.1 126.4
 150 155.1 0.0 347.8

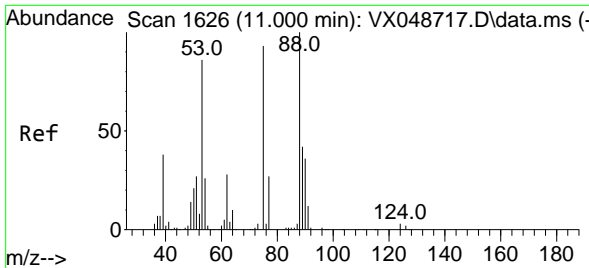


#76
 1,2,3-Trichloropropane
 Concen: 22.818 ug/l
 RT: 11.061 min Scan# 1636
 Delta R.T. -0.159 min
 Lab File: VX048791.D
 Acq: 09 Dec 2025 17:31



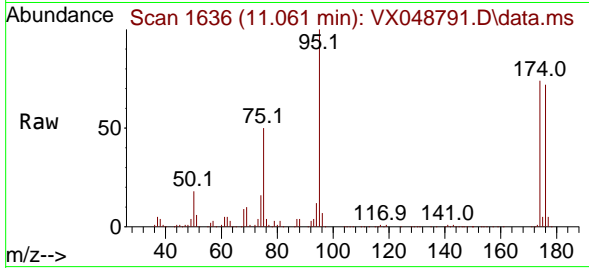
Tgt Ion: 75 Resp: 78864
 Ion Ratio Lower Upper
 75 100
 77 1.3 24.3 73.0#





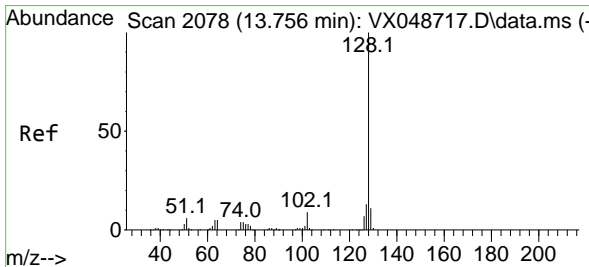
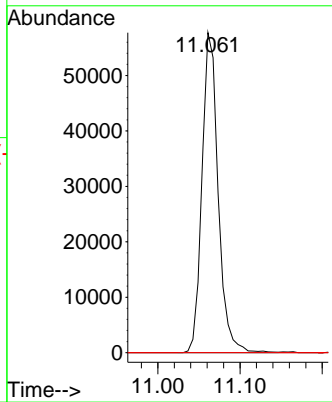
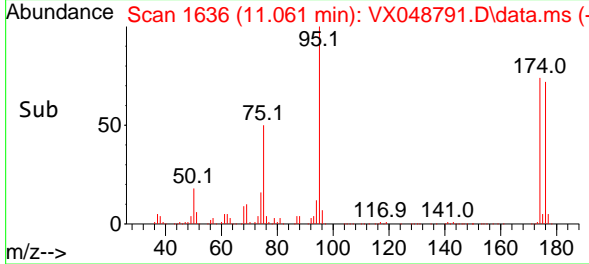
#81
 trans-1,4-Dichloro-2-butene
 Concen: 54.203 ug/l
 RT: 11.061 min Scan# 1
 Delta R.T. 0.061 min
 Lab File: VX048791.D
 Acq: 09 Dec 2025 17:31

Instrument : MSVOA_X
 ClientSampleId :

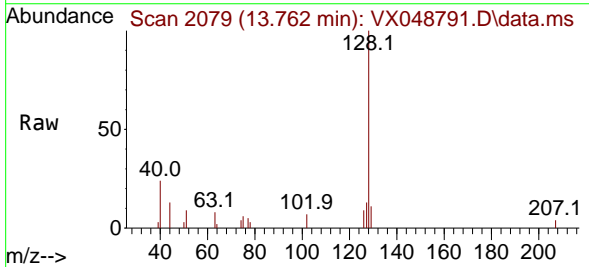


Tgt Ion: 75 Resp: 78864

Ion	Ratio	Lower	Upper
75	100		
53	0.0	79.9	119.9#
89	0.0	67.1	100.7#



#95
 Naphthalene
 Concen: Below Cal
 RT: 13.762 min Scan# 2079
 Delta R.T. 0.006 min
 Lab File: VX048791.D
 Acq: 09 Dec 2025 17:31



Tgt Ion: 128 Resp: 4027

Ion	Ratio	Lower	Upper
128	100		
127	12.3	10.2	15.2
129	8.6	8.6	13.0#

