

Data Path : Z:\VOASRV\HPCHEM1\MSVOA X\DATA\VX121019\  
 Data File : VX013901.D  
 Acq On : 10 Dec 2019 16:23  
 Operator : JC/SP  
 Sample : K6185-03  
 Misc : 5.0mL/MSVOA X/WATER  
 ALS Vial : 16 Sample Multiplier: 1

Instrument :  
 MSVOA\_X  
 ClientSampleId :  
 RE103D3-20191204

Integration Parameters: RTEINT.P  
 Integrator: RTE  
 Smoothing : ON Filtering: 5  
 Sampling : 1 Min Area: 3 % of largest Peak  
 Start Thrs: 0.2 Max Peaks: 100  
 Stop Thrs : 0 Peak Location: TOP

If leading or trailing edge < 100 prefer < Baseline drop else tangent >  
 Peak separation: 5

Method : Z:\VOASRV\HPCHEM1\MSVOA\_X\METHOD\82X112619W.M  
 Title : SW846 8260

Signal : TIC

| peak # | R.T. min | first scan | max scan | last scan | PK TY | peak height | corr. area | corr. % max. | % of total |
|--------|----------|------------|----------|-----------|-------|-------------|------------|--------------|------------|
| 1      | 1.070    | 26         | 30       | 41        | rBV   | 899913      | 1117394    | 7.73%        | 3.783%     |
| 2      | 5.490    | 745        | 755      | 767       | rBV2  | 312058      | 881545     | 6.10%        | 2.985%     |
| 3      | 5.655    | 771        | 782      | 794       | rBV   | 554991      | 1550063    | 10.72%       | 5.248%     |
| 4      | 6.057    | 834        | 848      | 860       | rBV   | 346196      | 930194     | 6.43%        | 3.149%     |
| 5      | 6.849    | 969        | 978      | 990       | rBV   | 850297      | 1978767    | 13.68%       | 6.700%     |
| 6      | 7.209    | 1027       | 1037     | 1050      | rBV   | 6847617     | 14462550   | 100.00%      | 48.968%    |
| 7      | 8.709    | 1277       | 1283     | 1294      | rBV   | 1795870     | 2707214    | 18.72%       | 9.166%     |
| 8      | 10.111   | 1507       | 1513     | 1522      | rBV   | 1671239     | 2280255    | 15.77%       | 7.721%     |
| 9      | 11.135   | 1675       | 1681     | 1689      | rVB   | 1296419     | 1689712    | 11.68%       | 5.721%     |
| 10     | 12.074   | 1830       | 1835     | 1841      | rBV   | 1580648     | 1937093    | 13.39%       | 6.559%     |

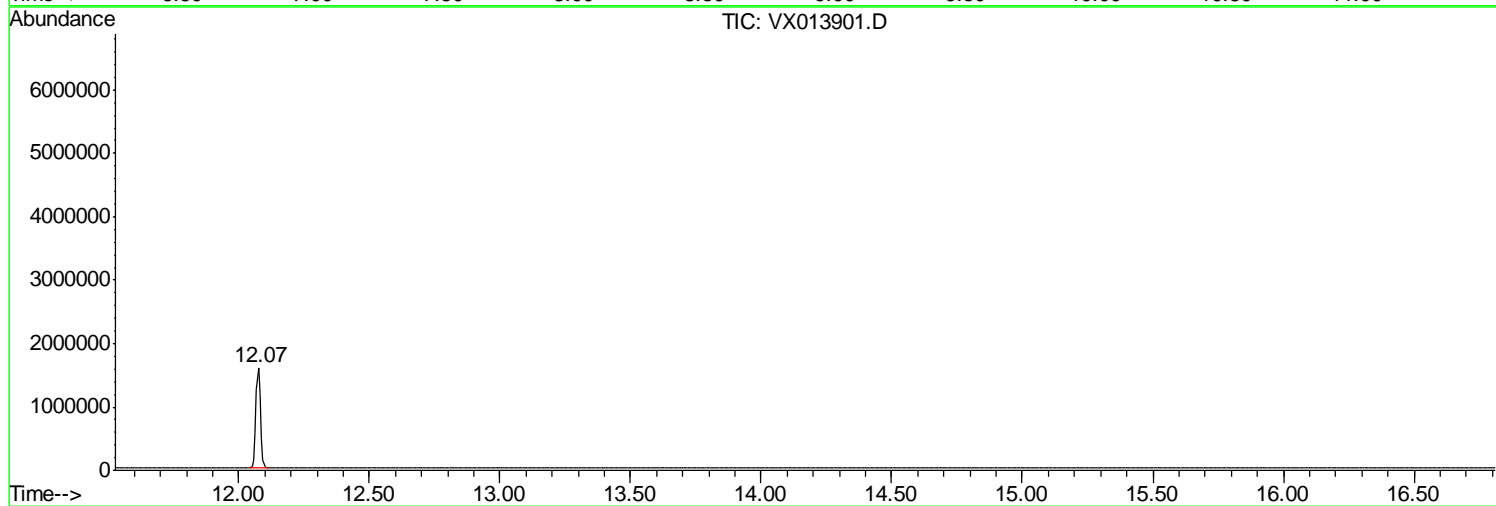
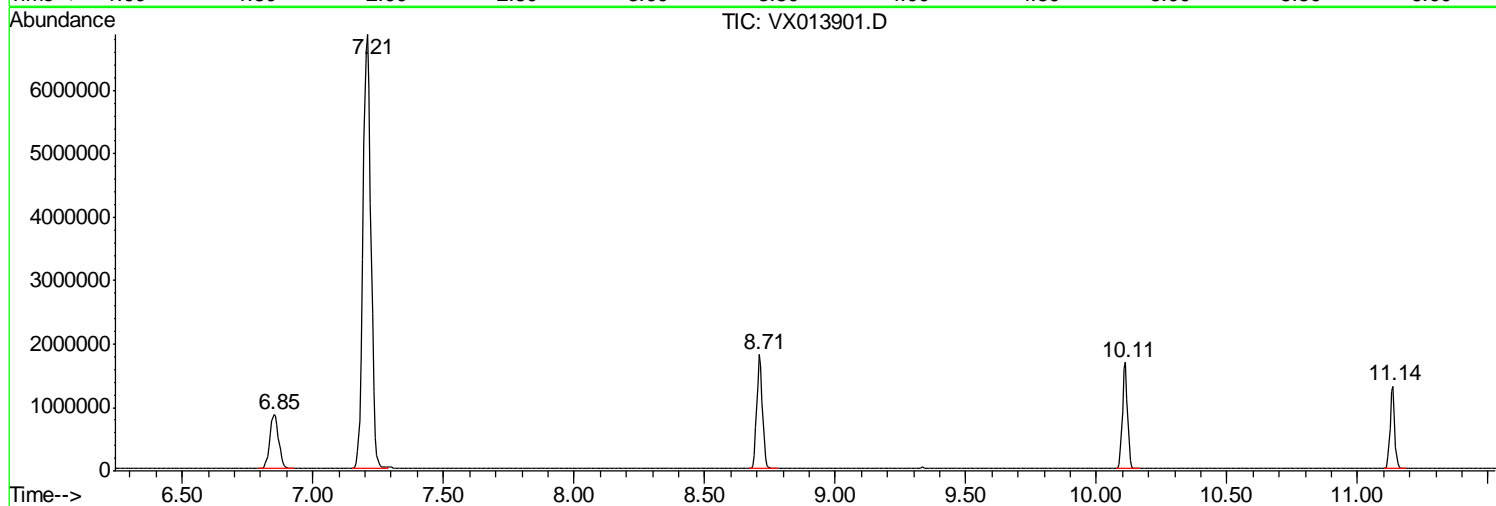
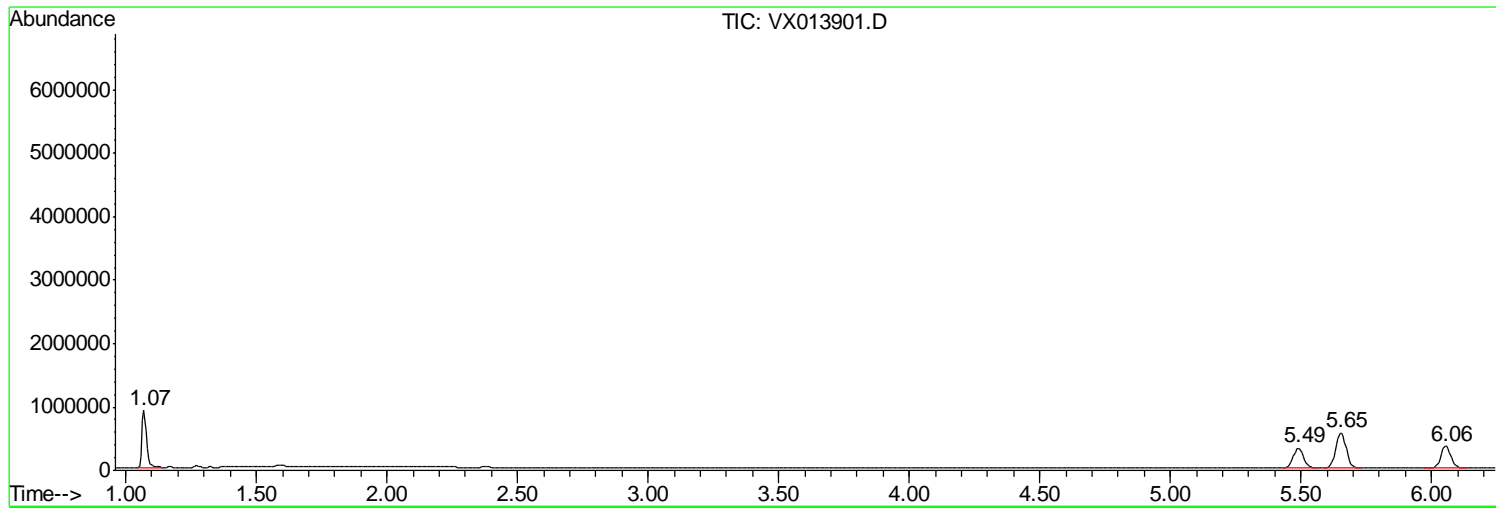
Sum of corrected areas: 29534787

Data Path : Z:\VOASRV\HPCHEM1\MSVOA X\DATA\VX121019\  
Data File : VX013901.D  
Acq On : 10 Dec 2019 16:23  
Operator : JC/SP  
Sample : K6185-03  
Misc : 5.0mL/MSVOA X/WATER  
ALS Vial : 16 Sample Multiplier: 1

Instrument :  
MSVOA\_X  
ClientSampleId :  
RE103D3-20191204

Quant Method : Z:\VOASRV\HPCHEM1\MSVOA\_X\METHOD\82X112619W.M  
Quant Title : SW846 8260

TIC Library : C:\DATABASE\NIST11.L  
TIC Integration Parameters: LSCINT.P



Data Path : Z:\VOASRV\HPCHEM1\MSVOA\_X\DATA\VX121019\  
Data File : VX013901.D  
Acq On : 10 Dec 2019 16:23  
Operator : JC/SP  
Sample : K6185-03  
Misc : 5.0mL/MSVOA\_X/WATER  
ALS Vial : 16 Sample Multiplier: 1

Instrument :  
MSVOA\_X  
ClientSampleId :  
RE103D3-20191204

Quant Method : Z:\VOASRV\HPCHEM1\MSVOA\_X\METHOD\82X112619W.M  
Quant Title : SW846 8260

TIC Library : C:\DATABASE\NIST11.L  
TIC Integration Parameters: LSCINT.P

No Library Search Compounds Detected

\*\*\*\*\*

Data Path : Z:\VOASRV\HPCHEM1\MSVOA\_X\DATA\VX121019\  
Data File : VX013901.D  
Acq On : 10 Dec 2019 16:23  
Operator : JC/SP  
Sample : K6185-03  
Misc : 5.0mL/MSVOA\_X/WATER  
ALS Vial : 16 Sample Multiplier: 1

Instrument :  
MSVOA\_X  
ClientSampleId :  
RE103D3-20191204

Quant Method : Z:\VOASRV\HPCHEM1\MSVOA\_X\METHOD\82X112619W.M  
Quant Title : SW846 8260

TIC Library : C:\DATABASE\NIST11.L  
TIC Integration Parameters: LSCINT.P

| TIC Top Hit name | RT | EstConc | Units | Response | --Internal Standard-- |    |      |      |
|------------------|----|---------|-------|----------|-----------------------|----|------|------|
|                  |    |         |       |          | #                     | RT | Resp | Conc |

---