

Data Path : Z:\VOASRV\HPCHEM1\MSVOA_X\DATA\WX121020\
 Data File : VX019814.D
 Acq On : 10 Dec 2020 10:51
 Operator : JC/MD
 Sample : L5009-08
 Misc : 5.0mL/MSVOA_X/WATER
 ALS Vial : 5 Sample Multiplier: 1

Instrument :
 MSVOA_X
 ClientSampleId :
 TRIP-BLANK

Quant Time: Dec 11 00:49:02 2020
 Quant Method : Z:\VOASRV\HPCHEM1\MSVOA_X\METHOD\82X120420W.M
 Quant Title : SW846 8260
 QLast Update : Fri Dec 04 15:32:53 2020
 Response via : Initial Calibration

Internal Standards	R.T.	QIon	Response	Conc	Units	Dev(Min)
1) Pentafluorobenzene	5.62	168	339295	50.00	ug/l	0.00
34) 1,4-Difluorobenzene	6.82	114	562021	50.00	ug/l	0.00
63) Chlorobenzene-d5	10.09	117	509074	50.00	ug/l	0.00
72) 1,4-Dichlorobenzene-d4	12.06	152	220211	50.00	ug/l	0.00

System Monitoring Compounds

33) 1,2-Dichloroethane-d4	6.03	65	209770	47.04	ug/l	0.00
Spiked Amount	50.000	Range	61 - 141	Recovery	=	94.08%
35) Dibromofluoromethane	5.46	113	170300	46.89	ug/l	0.00
Spiked Amount	50.000	Range	69 - 133	Recovery	=	93.78%
50) Toluene-d8	8.70	98	679531	49.00	ug/l	0.00
Spiked Amount	50.000	Range	65 - 126	Recovery	=	98.00%
62) 4-Bromofluorobenzene	11.12	95	237205	44.94	ug/l	0.00
Spiked Amount	50.000	Range	58 - 135	Recovery	=	89.88%

Target Compounds

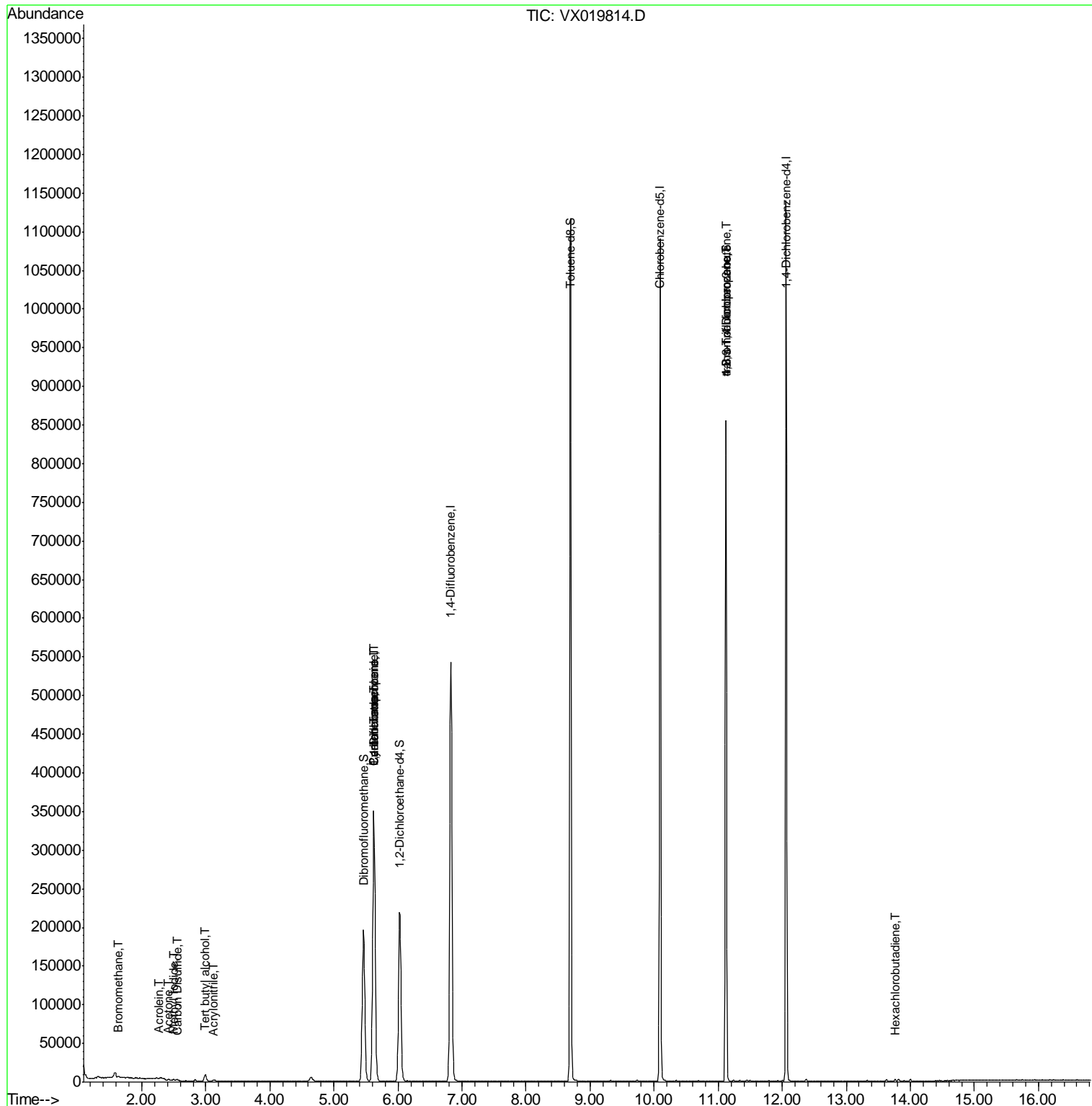
						Qvalue
5) Bromomethane	1.63	94	849	0.664	ug/l	92
10) Methyl Iodide	2.50	142	2118	0.467	ug/l	100
11) Tert butyl alcohol	3.00	59	5011	2.883	ug/l #	73
13) Acrolein	2.27	56	302	0.614	ug/l #	45
15) Acrylonitrile	3.12	53	538	0.267	ug/l #	87
16) Acetone	2.41	43	1214	0.724	ug/l #	82
17) Carbon Disulfide	2.55	76	2006	0.225	ug/l #	80
20) Methylene Chloride	2.84	84	965	Below Cal	#	80
31) Cyclohexane	5.63	56	6682	1.205	ug/l #	1
36) 1,1-Dichloropropene	5.63	75	25639	5.048	ug/l #	49
38) Carbon Tetrachloride	5.62	117	32561	6.547	ug/l #	16
76) 1,2,3-Trichloropropane	11.12	75	115253	23.336	ug/l #	39
81) trans-1,4-Dichloro-2-buten	11.12	75	115253	67.459	ug/l #	12
94) Hexachlorobutadiene	13.77	225	416	0.208	ug/l	98

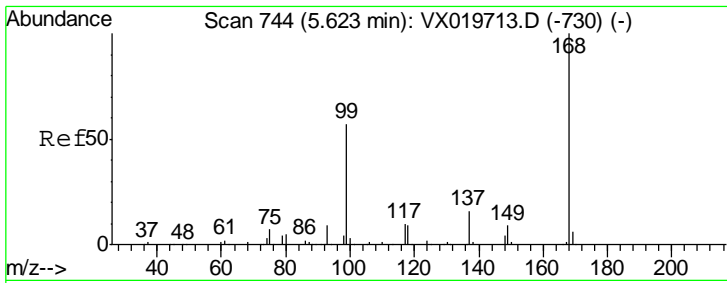
(#) = qualifier out of range (m) = manual integration (+) = signals summed

Data Path : Z:\VOASRV\HPCHEM1\MSVOA_X\DATA\VX121020\
 Data File : VX019814.D
 Acq On : 10 Dec 2020 10:51
 Operator : JC/MD
 Sample : L5009-08
 Misc : 5.0mL/MSVOA_X/WATER
 ALS Vial : 5 Sample Multiplier: 1

Instrument :
 MSVOA_X
 Client Sampled :
 TRIP-BLANK

Quant Time: Dec 11 00:49:02 2020
 Quant Method : Z:\VOASRV\HPCHEM1\MSVOA_X\METHOD\82X120420W.M
 Quant Title : SW846 8260
 QLast Update : Fri Dec 04 15:32:53 2020
 Response via : Initial Calibration

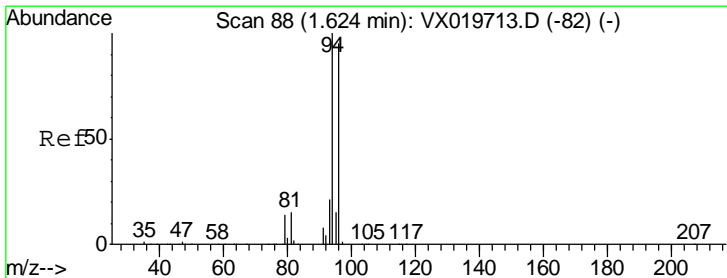
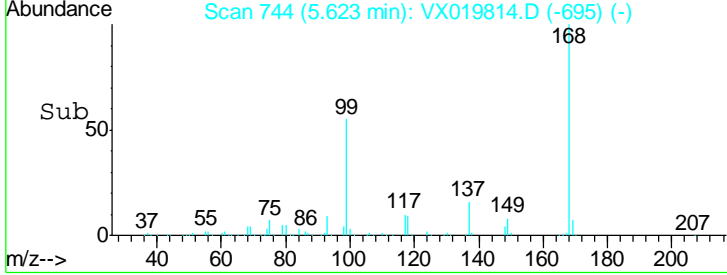
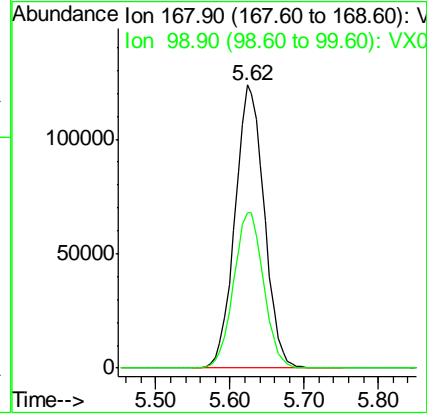
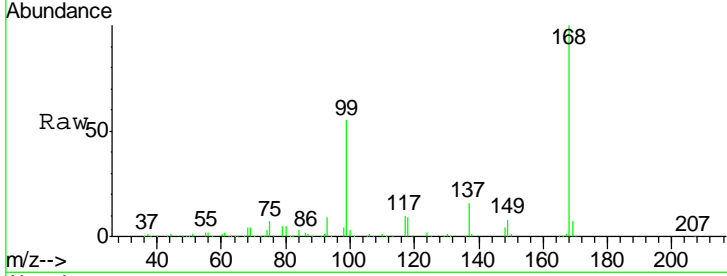




#1
 Pentafluorobenzene
 Concen: 50.000 ug/l
 RT: 5.62 min Scan# 744
 Delta R.T. 0.00 min
 Lab File: VX019814.D
 Acq: 10 Dec 2020 10:51

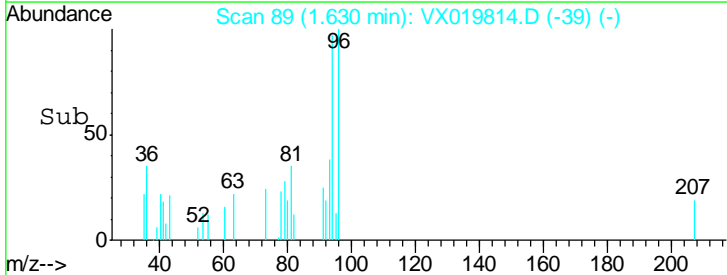
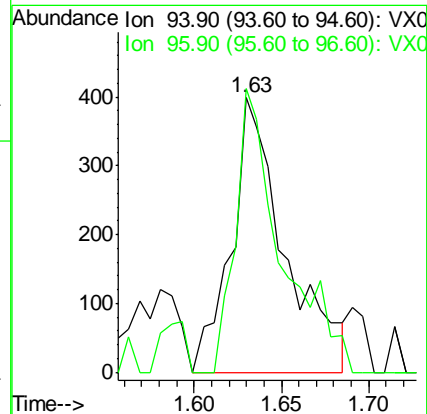
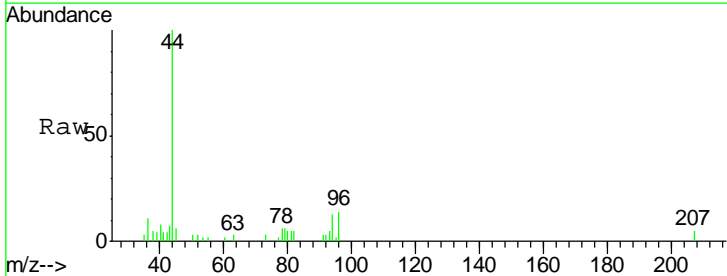
Instrument :
 MSVOA_X
 ClientSampled :
 TRIP-BLANK

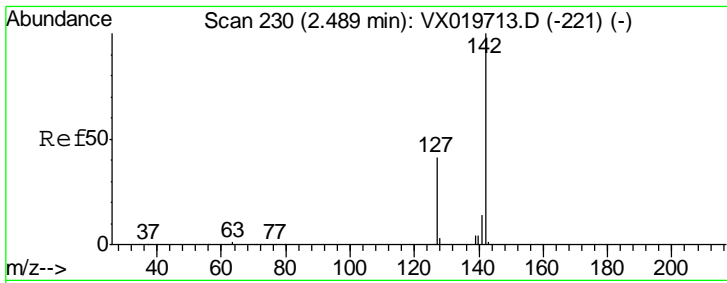
Tgt Ion: 168 Resp: 339295
 Ion Ratio Lower Upper
 168 100
 99 55.1 45.8 68.6



#5
 Bromomethane
 Concen: 0.664 ug/l
 RT: 1.63 min Scan# 89
 Delta R.T. 0.01 min
 Lab File: VX019814.D
 Acq: 10 Dec 2020 10:51

Tgt Ion: 94 Resp: 849
 Ion Ratio Lower Upper
 94 100
 96 103.3 76.4 114.6

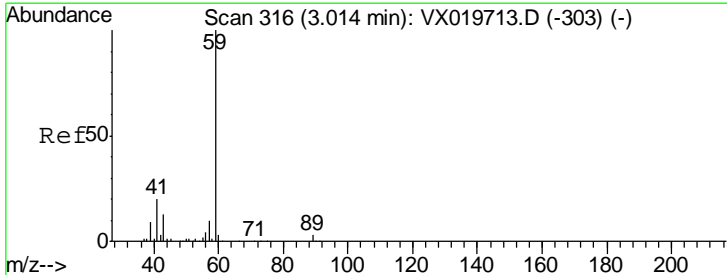
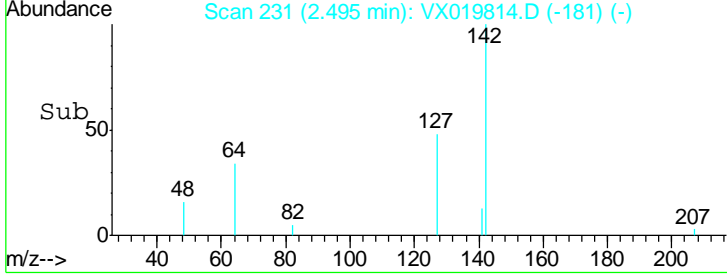
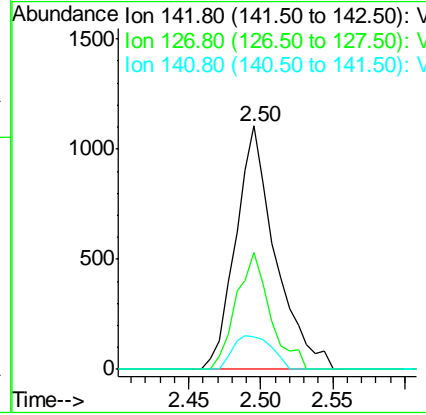
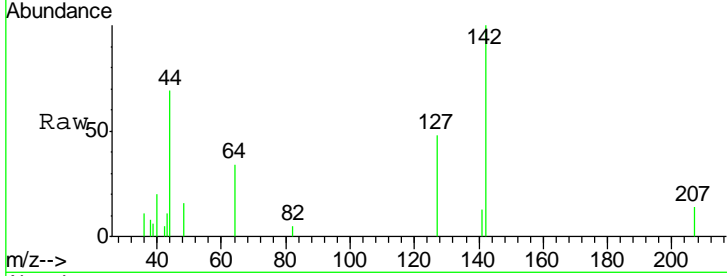




#10
 Methyl Iodide
 Concen: 0.467 ug/l
 RT: 2.50 min Scan# 231
 Delta R.T. 0.01 min
 Lab File: VX019814.D
 Acq: 10 Dec 2020 10:51

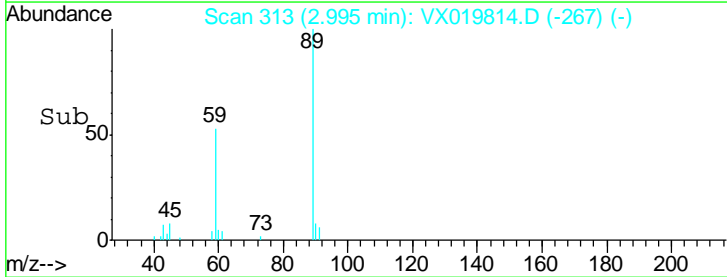
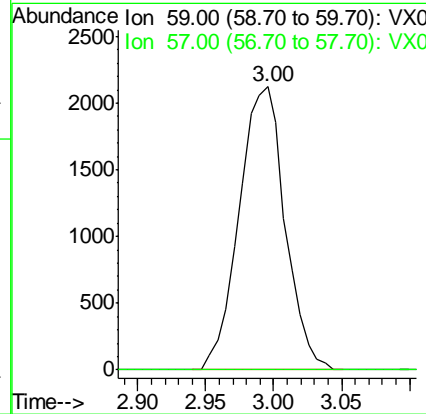
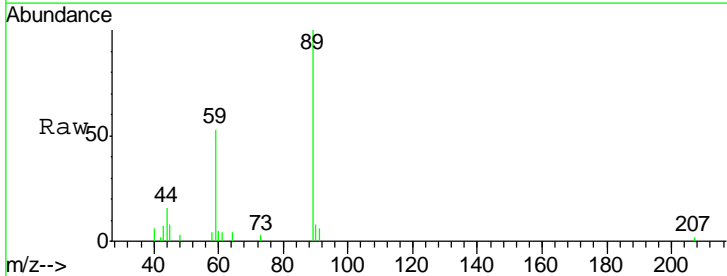
Instrument :
 MSVOA_X
 ClientSampled :
 TRIP-BLANK

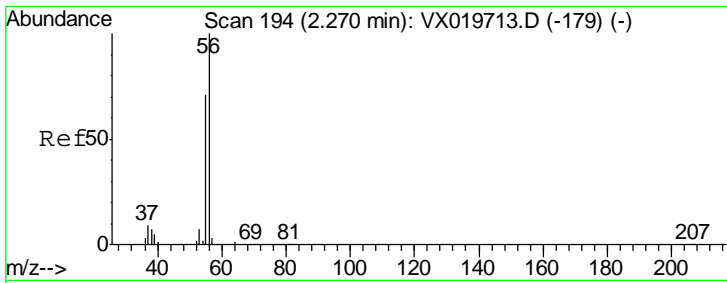
Tgt Ion	Resp	Lower	Upper
142	100		
127	41.6	33.3	49.9
141	13.6	11.4	17.0



#11
 Tert butyl alcohol
 Concen: 2.883 ug/l
 RT: 3.00 min Scan# 313
 Delta R.T. -0.02 min
 Lab File: VX019814.D
 Acq: 10 Dec 2020 10:51

Tgt Ion	Resp	Lower	Upper
59	100		
57	0.0	7.8	11.8#

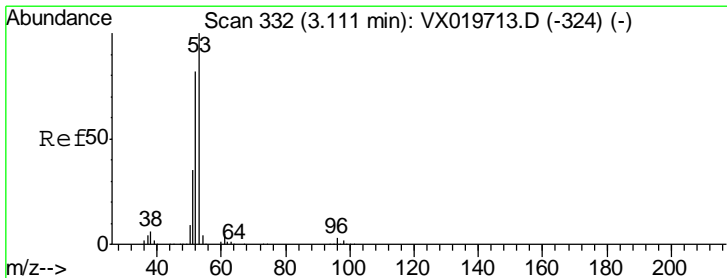
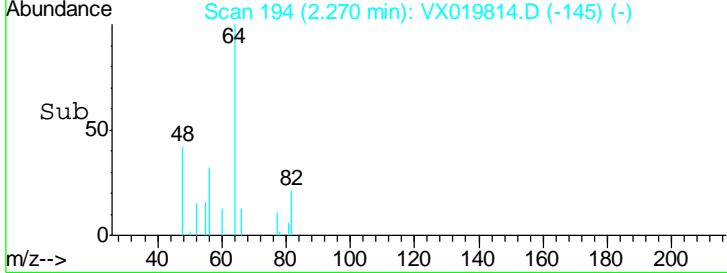
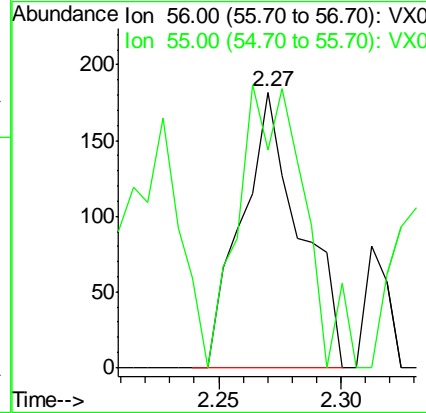
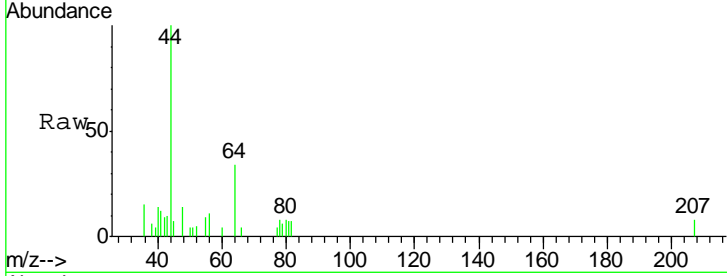




#13
 Acrolein
 Concen: 0.614 ug/l
 RT: 2.27 min Scan# 194
 Delta R.T. 0.00 min
 Lab File: VX019814.D
 Acq: 10 Dec 2020 10:51

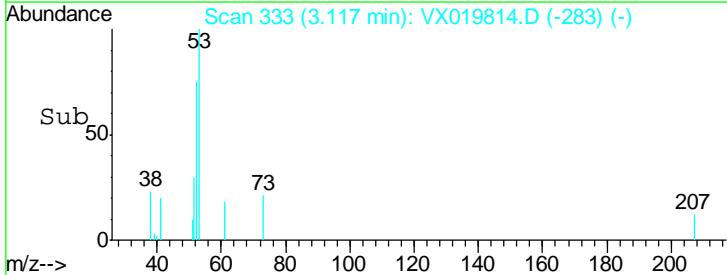
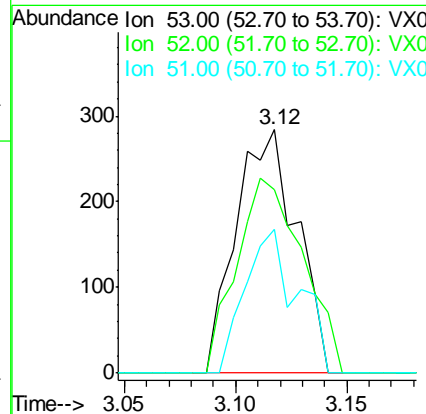
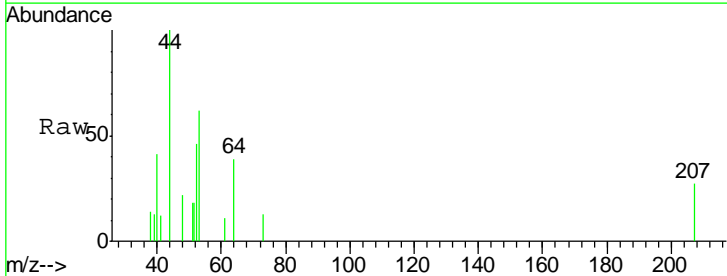
Instrument :
 MSVOA_X
 ClientSampled :
 TRIP-BLANK

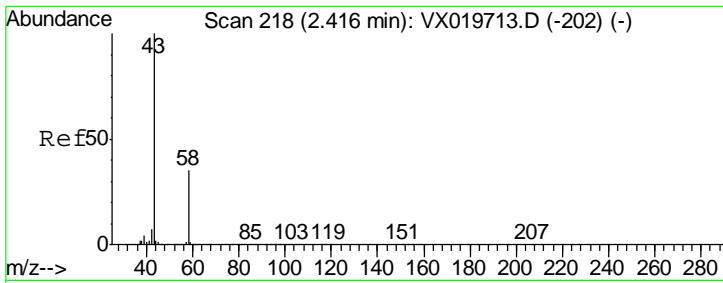
Tgt Ion: 56 Resp: 302
 Ion Ratio Lower Upper
 56 100
 55 115.6 56.4 84.6#



#15
 Acrylonitrile
 Concen: 0.267 ug/l
 RT: 3.12 min Scan# 333
 Delta R.T. 0.01 min
 Lab File: VX019814.D
 Acq: 10 Dec 2020 10:51

Tgt Ion: 53 Resp: 538
 Ion Ratio Lower Upper
 53 100
 52 87.4 65.3 97.9
 51 51.1 28.2 42.2#

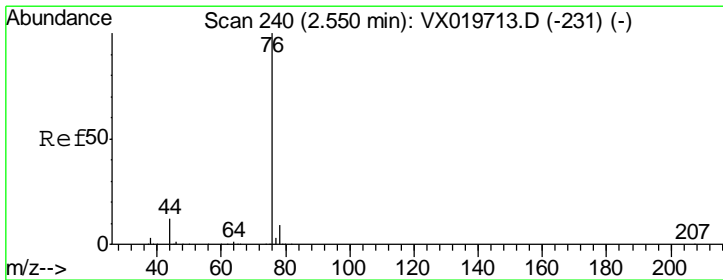
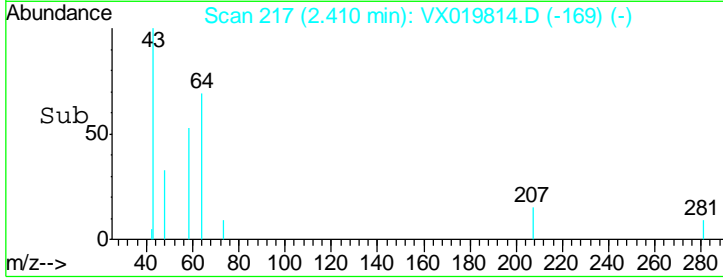
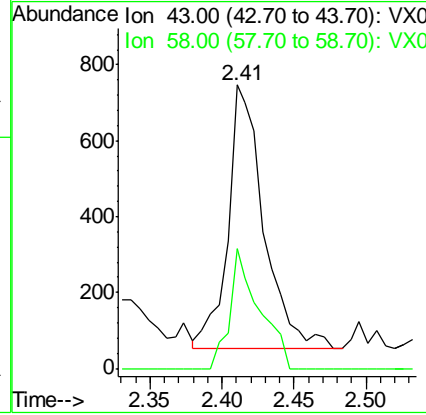
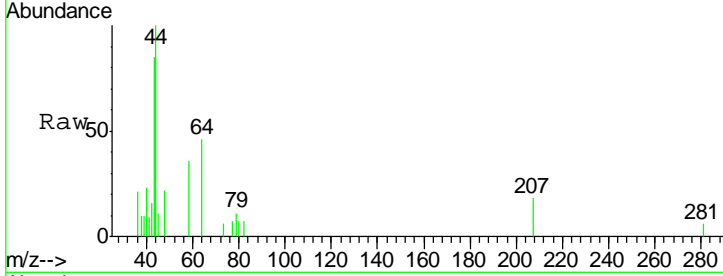




#16
 Acetone
 Concen: 0.724 ug/l
 RT: 2.41 min Scan# 217
 Delta R.T. -0.01 min
 Lab File: VX019814.D
 Acq: 10 Dec 2020 10:51

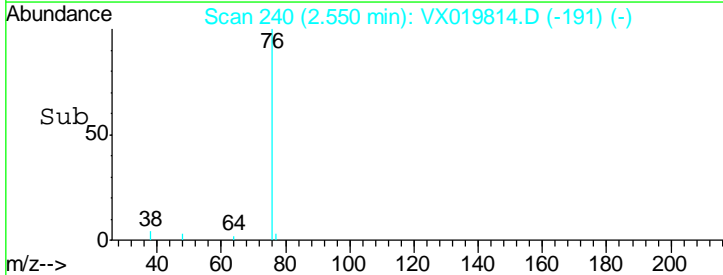
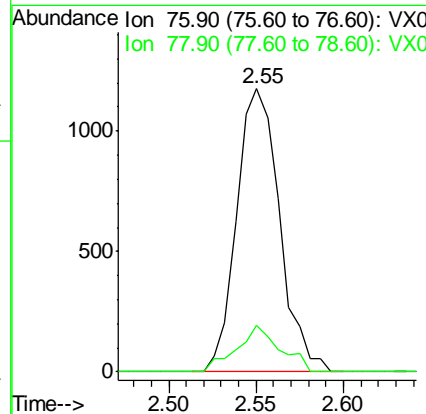
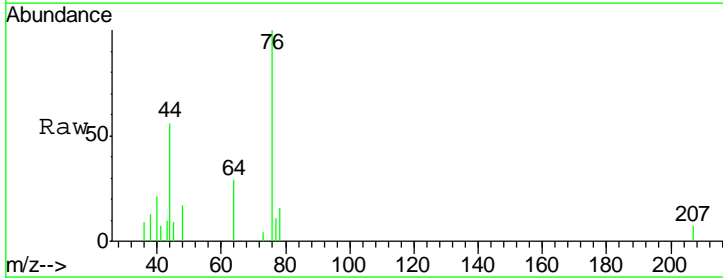
Instrument :
 MSVOA_X
 ClientSampled :
 TRIP-BLANK

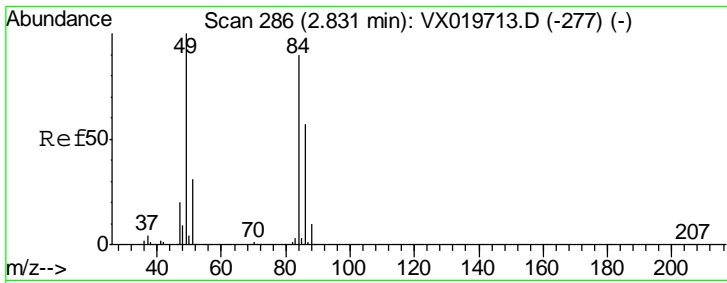
Tgt Ion: 43 Resp: 1214
 Ion Ratio Lower Upper
 43 100
 58 45.2 27.8 41.8#



#17
 Carbon Disulfide
 Concen: 0.225 ug/l
 RT: 2.55 min Scan# 240
 Delta R.T. 0.00 min
 Lab File: VX019814.D
 Acq: 10 Dec 2020 10:51

Tgt Ion: 76 Resp: 2006
 Ion Ratio Lower Upper
 76 100
 78 16.3 7.2 10.8#

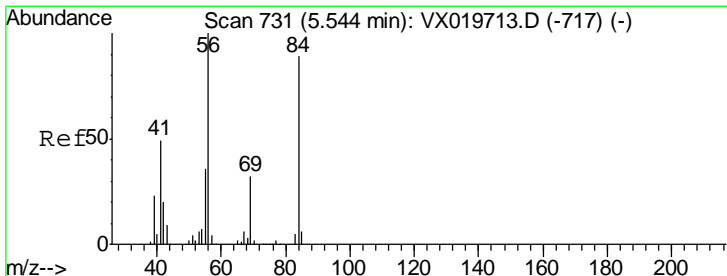
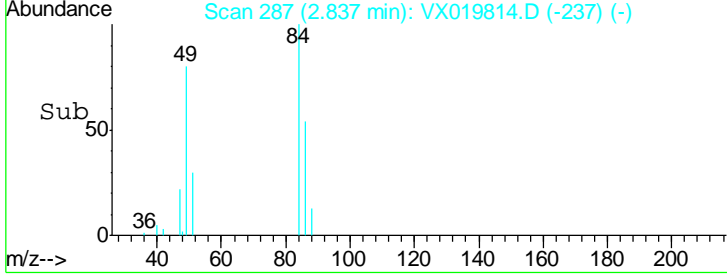
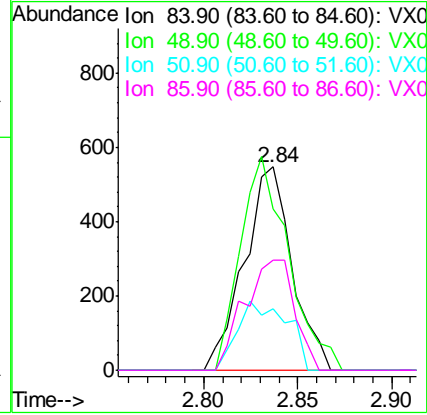
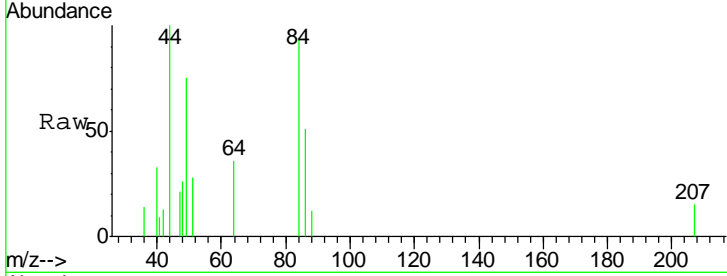




#20
 Methylene Chloride
 Concen: Below Cal
 RT: 2.84 min Scan# 287
 Delta R.T. 0.01 min
 Lab File: VX019814.D
 Acq: 10 Dec 2020 10:51

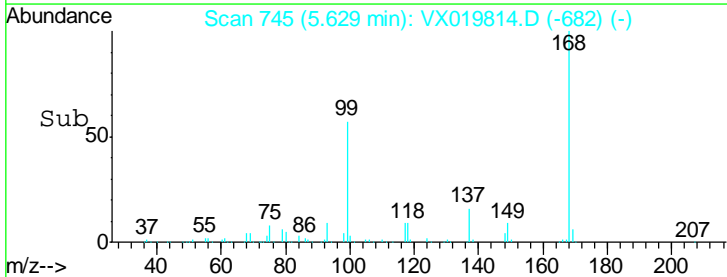
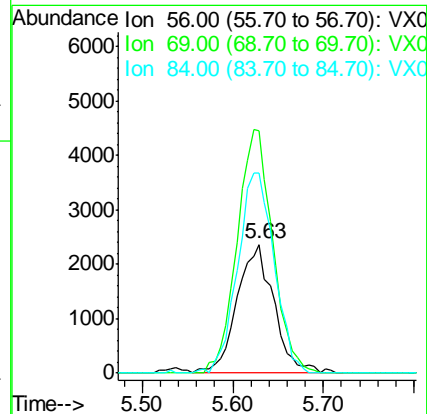
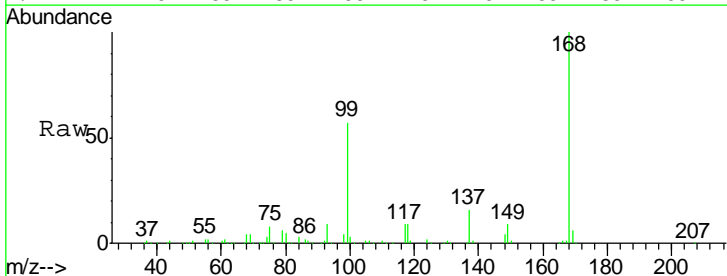
Instrument :
 MSVOA_X
ClientSampled :
 TRIP-BLANK

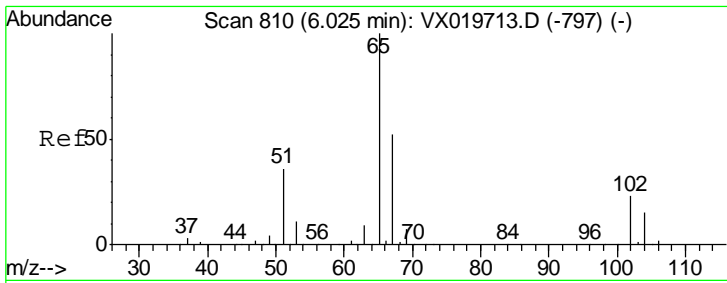
Tgt Ion	Resp	Lower	Upper
84	100		
49	79.5	88.6	132.8#
51	30.2	27.0	40.6
86	53.9	50.3	75.5



#31
 Cyclohexane
 Concen: 1.205 ug/l
 RT: 5.63 min Scan# 745
 Delta R.T. 0.09 min
 Lab File: VX019814.D
 Acq: 10 Dec 2020 10:51

Tgt Ion	Resp	Lower	Upper
56	100		
69	187.8	25.3	37.9#
84	155.1	71.4	107.0#

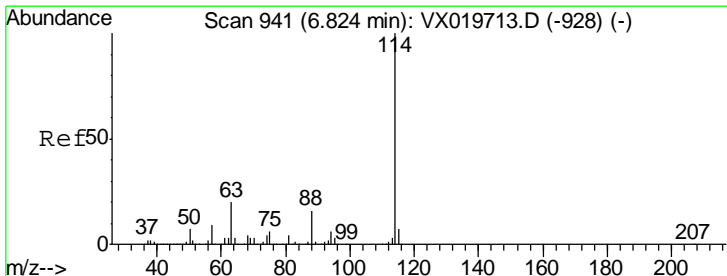
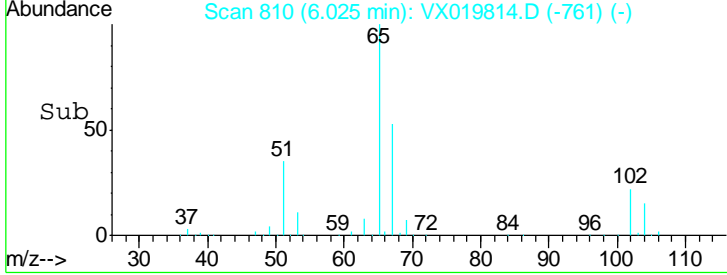
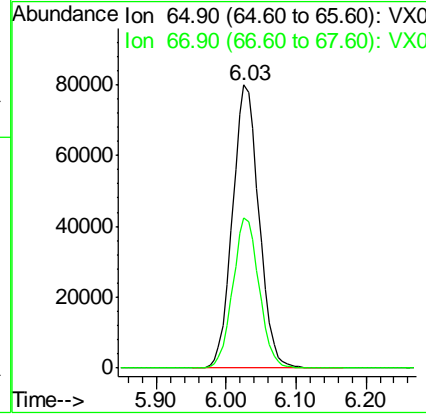
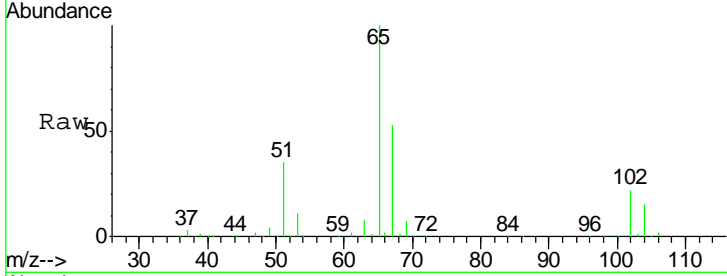




#33
 1,2-Dichloroethane-d4
 Concen: 47.041 ug/l
 RT: 6.03 min Scan# 810
 Delta R.T. 0.00 min
 Lab File: VX019814.D
 Acq: 10 Dec 2020 10:51

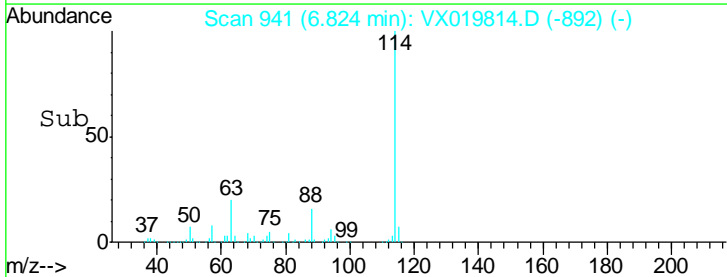
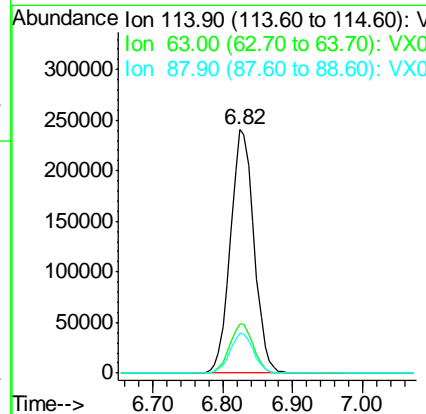
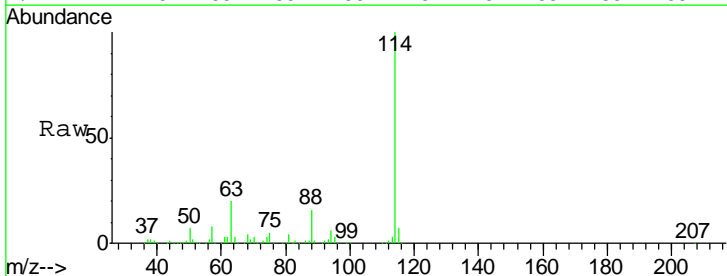
Instrument :
 MSVOA_X
 ClientSampled :
 TRIP-BLANK

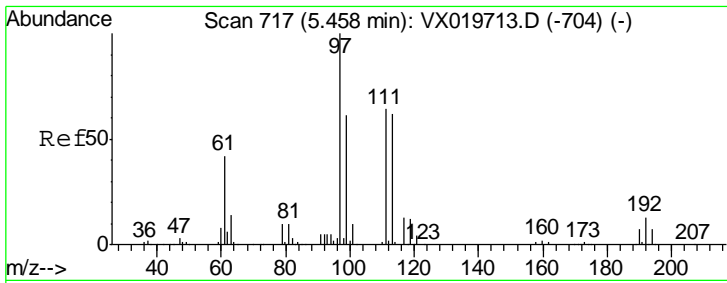
Tgt Ion: 65 Resp: 209770
 Ion Ratio Lower Upper
 65 100
 67 52.8 0.0 105.4



#34
 1,4-Difluorobenzene
 Concen: 50.000 ug/l
 RT: 6.82 min Scan# 941
 Delta R.T. 0.00 min
 Lab File: VX019814.D
 Acq: 10 Dec 2020 10:51

Tgt Ion: 114 Resp: 562021
 Ion Ratio Lower Upper
 114 100
 63 20.0 0.0 40.8
 88 16.3 0.0 32.8

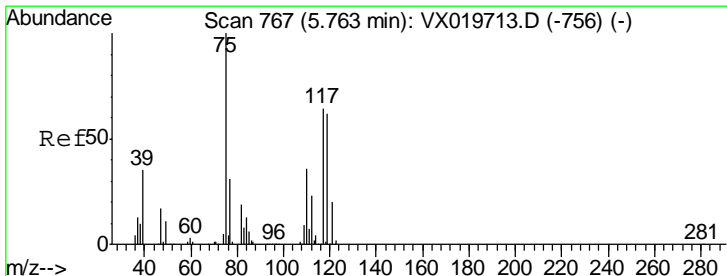
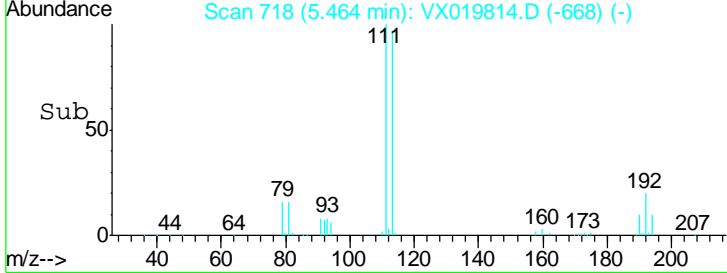
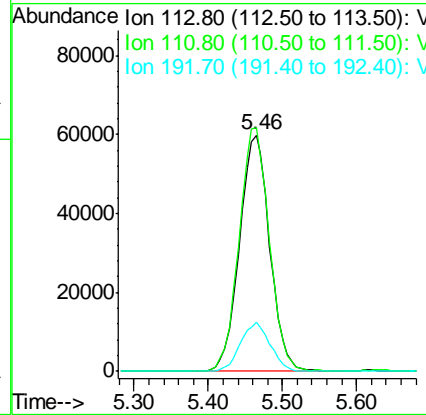
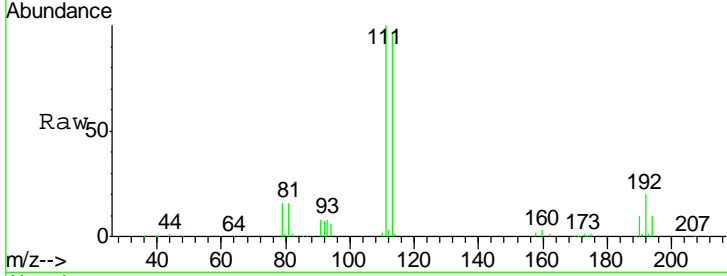




#35
 Dibromofluoromethane
 Concen: 46.885 ug/l
 RT: 5.46 min Scan# 718
 Delta R.T. 0.01 min
 Lab File: VX019814.D
 Acq: 10 Dec 2020 10:51

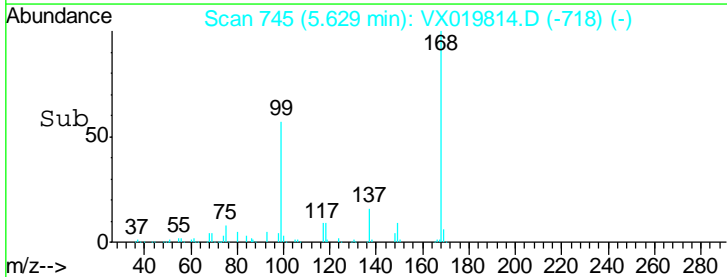
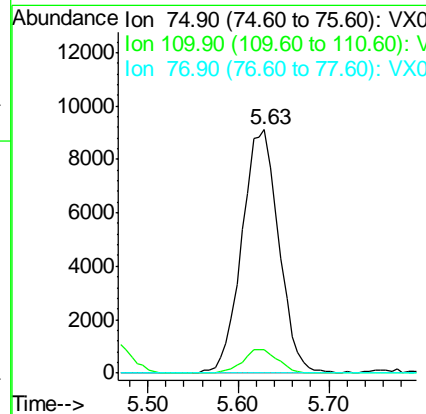
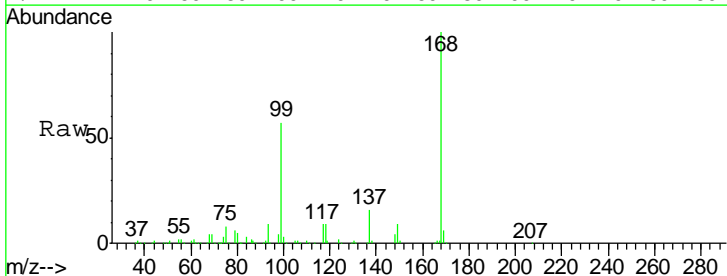
Instrument :
 MSVOA_X
 ClientSampled :
 TRIP-BLANK

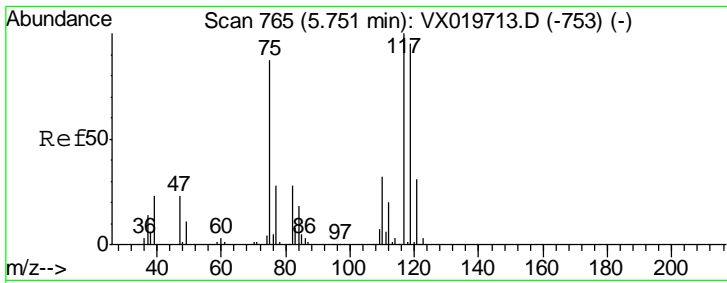
Tgt Ion	Resp	Lower	Upper
113	170300		
111	103.2	81.9	122.9
192	20.6	16.7	25.1



#36
 1,1-Dichloropropene
 Concen: 5.048 ug/l
 RT: 5.63 min Scan# 745
 Delta R.T. -0.13 min
 Lab File: VX019814.D
 Acq: 10 Dec 2020 10:51

Tgt Ion	Resp	Lower	Upper
75	25639		
75	100		
110	9.1	18.1	54.4#
77	0.0	25.3	37.9#

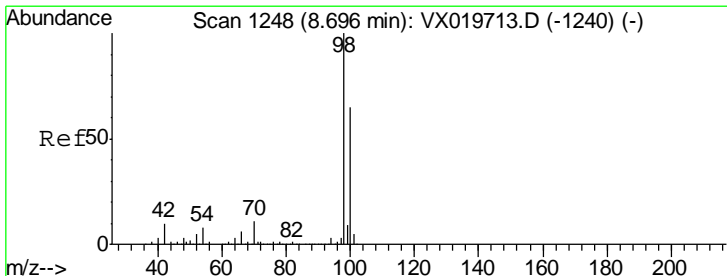
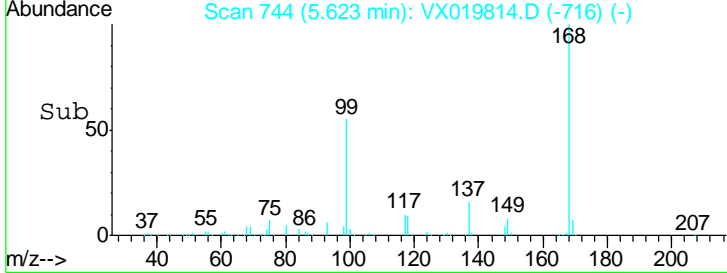
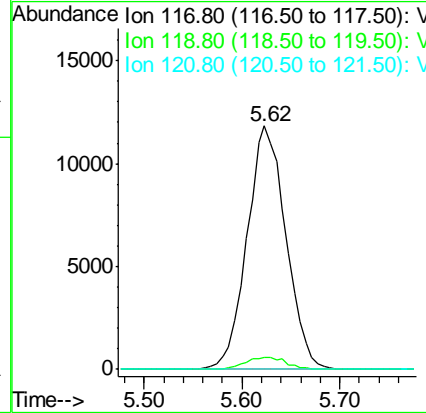
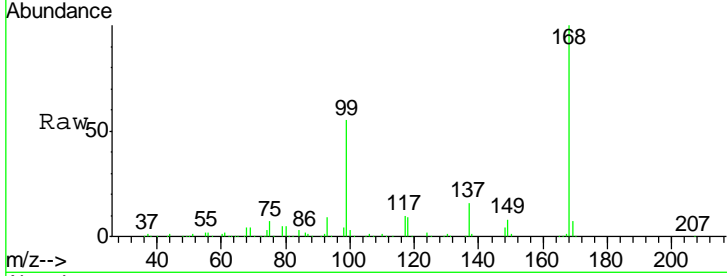




#38
 Carbon Tetrachloride
 Concen: 6.547 ug/l
 RT: 5.62 min Scan# 744
 Delta R.T. -0.13 min
 Lab File: VX019814.D
 Acq: 10 Dec 2020 10:51

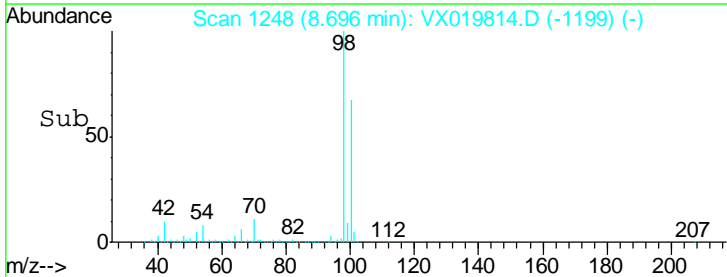
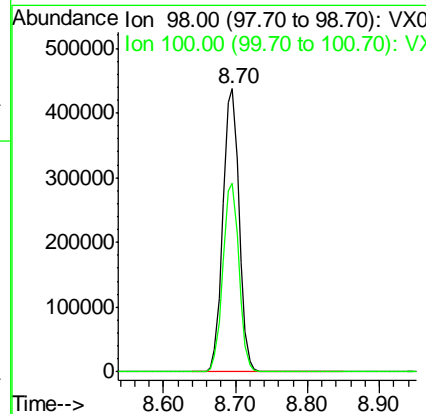
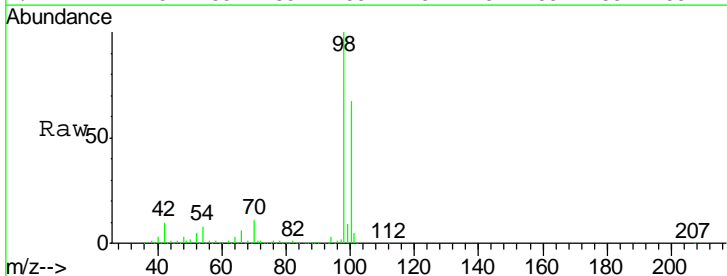
Instrument :
 MSVOA_X
ClientSampled :
 TRIP-BLANK

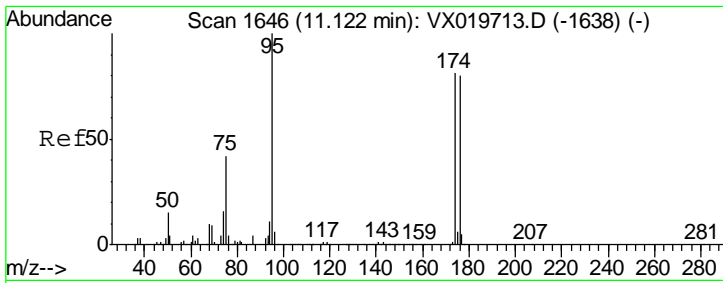
Tgt Ion	Resp	Lower	Upper
117	100		
119	5.1	76.2	114.2#
121	0.0	24.8	37.2#



#50
 Toluene-d8
 Concen: 49.003 ug/l
 RT: 8.70 min Scan# 1248
 Delta R.T. 0.00 min
 Lab File: VX019814.D
 Acq: 10 Dec 2020 10:51

Tgt Ion	Resp	Lower	Upper
98	100		
100	66.0	51.9	77.9

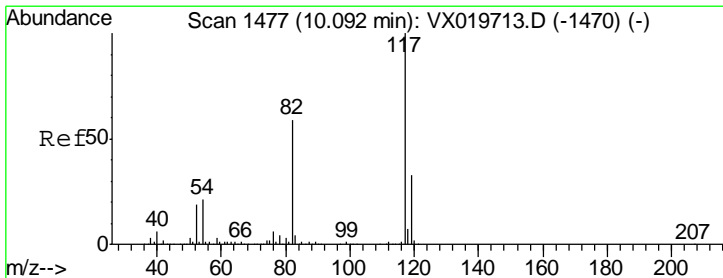
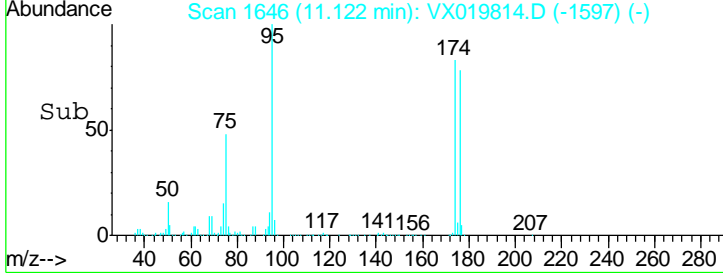
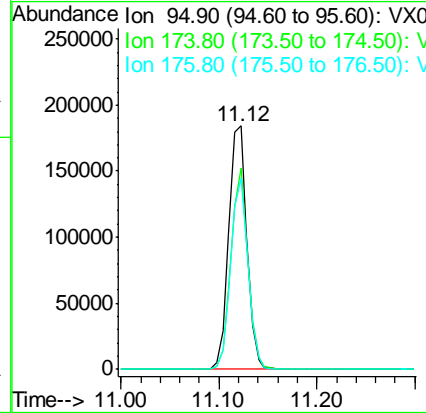
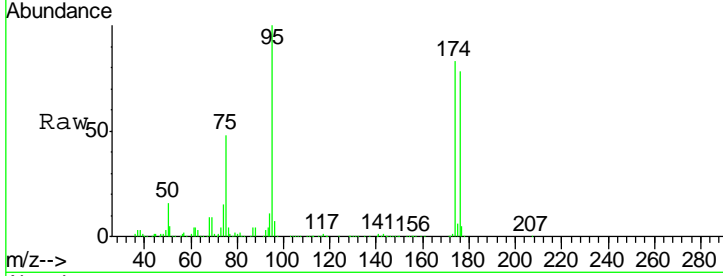




#62
 4-Bromofluorobenzene
 Concen: 44.942 ug/l
 RT: 11.12 min Scan# 1646
 Delta R.T. 0.00 min
 Lab File: VX019814.D
 Acq: 10 Dec 2020 10:51

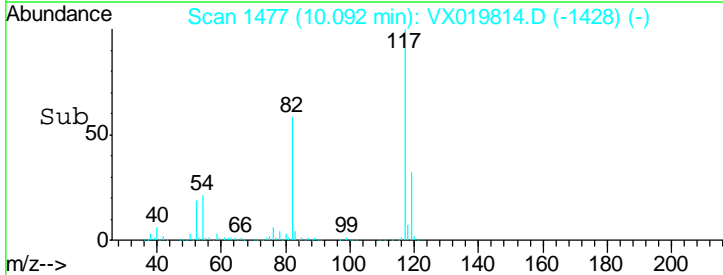
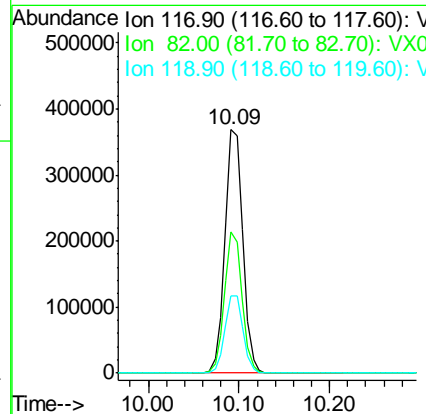
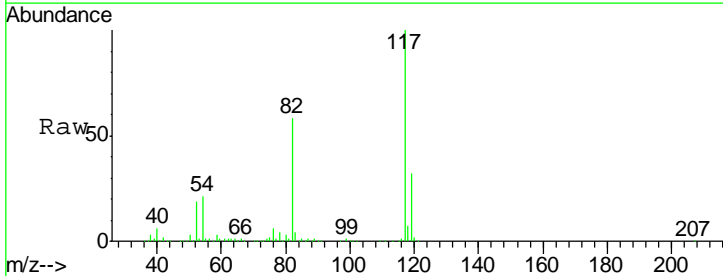
Instrument :
 MSVOA_X
 ClientSampled :
 TRIP-BLANK

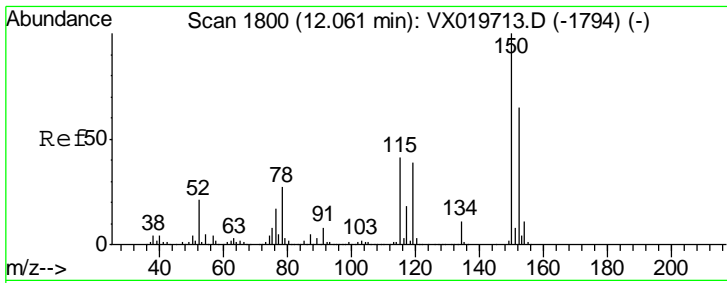
Tgt Ion	Resp	Lower	Upper
95	237205		
174	77.6	0.0	154.6
176	74.9	0.0	155.8



#63
 Chlorobenzene-d5
 Concen: 50.000 ug/l
 RT: 10.09 min Scan# 1477
 Delta R.T. 0.00 min
 Lab File: VX019814.D
 Acq: 10 Dec 2020 10:51

Tgt Ion	Resp	Lower	Upper
117	509074		
82	58.0	47.4	71.2
119	31.8	26.6	39.8

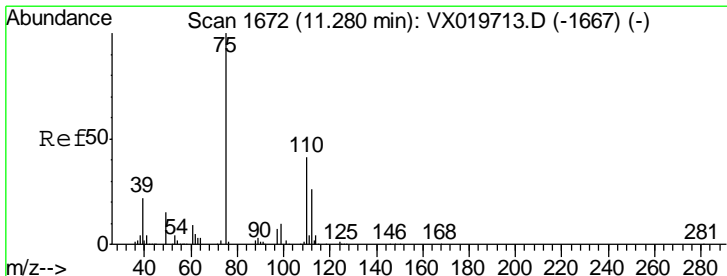
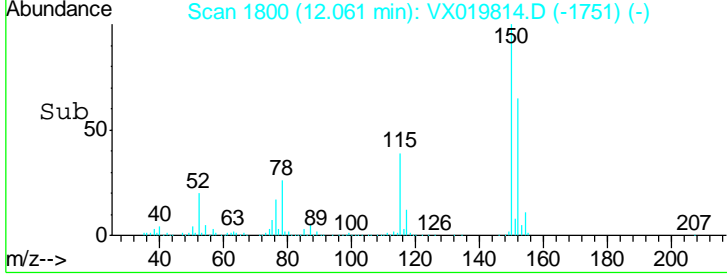
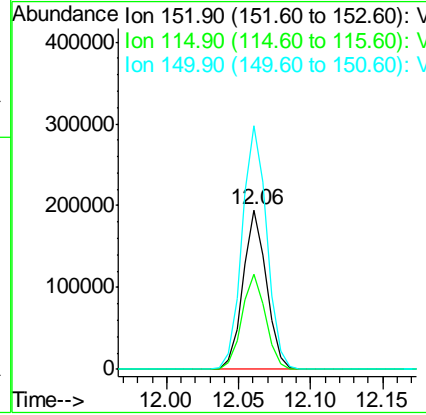
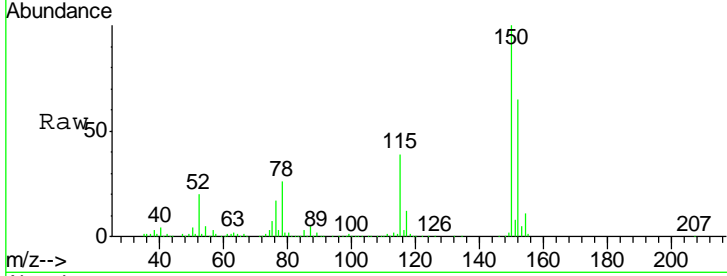




#72
 1,4-Dichlorobenzene-d4
 Concen: 50.000 ug/l
 RT: 12.06 min Scan# 1800
 Delta R.T. 0.00 min
 Lab File: VX019814.D
 Acq: 10 Dec 2020 10:51

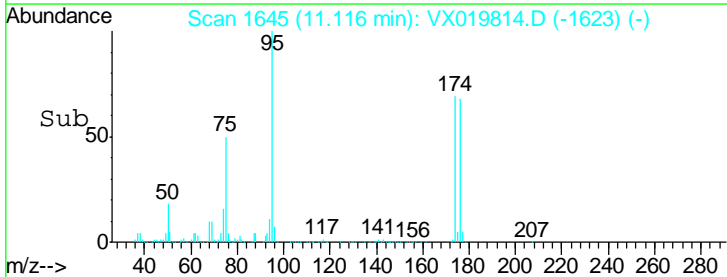
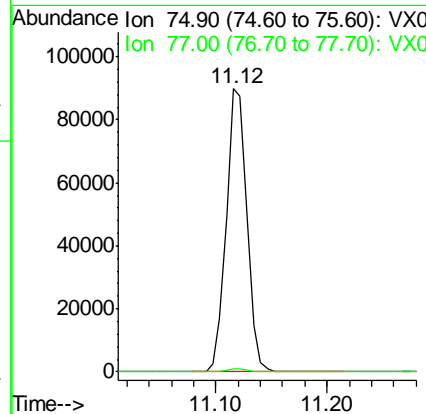
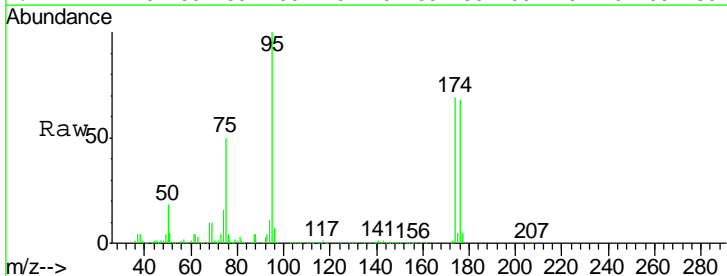
Instrument :
 MSVOA_X
 ClientSampled :
 TRIP-BLANK

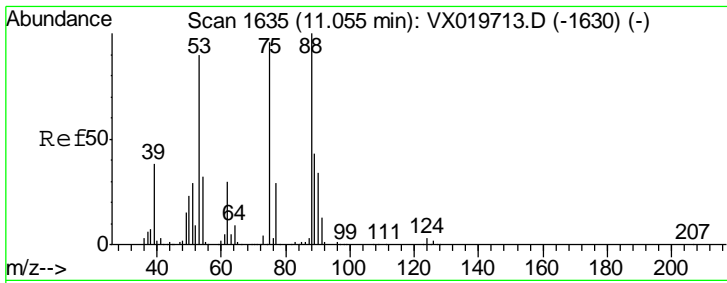
Tgt Ion	Resp	Lower	Upper
152	100		
115	60.8	41.1	123.3
150	161.2	0.0	349.0



#76
 1,2,3-Trichloropropane
 Concen: 23.336 ug/l
 RT: 11.12 min Scan# 1645
 Delta R.T. -0.16 min
 Lab File: VX019814.D
 Acq: 10 Dec 2020 10:51

Tgt Ion	Resp	Lower	Upper
75	100		
77	1.3	19.1	57.5#

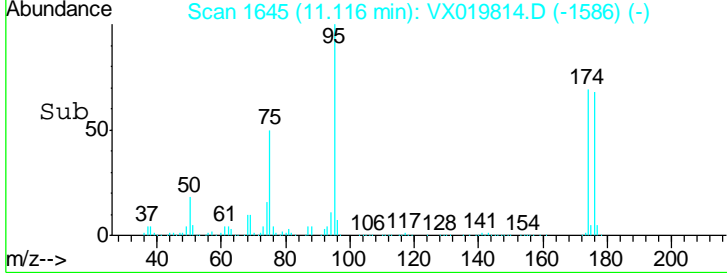
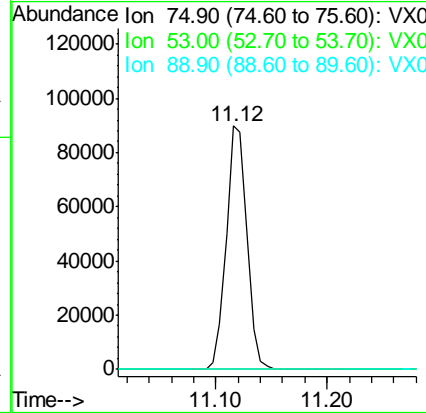
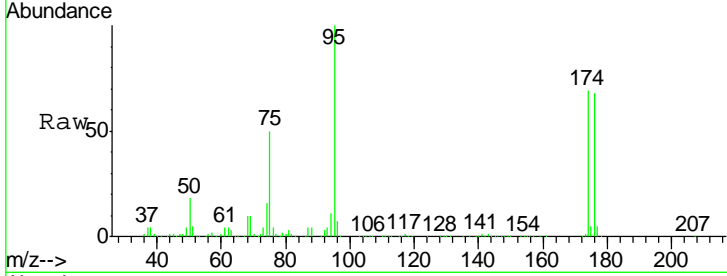




#81
 trans-1,4-Dichloro-2-butene
 Concen: 67.459 ug/l
 RT: 11.12 min Scan# 1645
 Delta R.T. 0.06 min
 Lab File: VX019814.D
 Acq: 10 Dec 2020 10:51

Instrument :
 MSVOA_X
 ClientSampleId :
 TRIP-BLANK

Tgt Ion	Resp	Lower	Upper
75	115253		
53	0.0	74.5	111.7#
89	0.0	37.9	56.9#



#94
 Hexachlorobutadiene
 Concen: 0.208 ug/l
 RT: 13.77 min Scan# 2080
 Delta R.T. 0.01 min
 Lab File: VX019814.D
 Acq: 10 Dec 2020 10:51

Tgt Ion	Resp	Lower	Upper
225	416		
223	62.5	31.1	93.2
227	66.1	31.6	95.0

