

Data Path : Z:\VOASRV\HPCHEM1\MSVOA\_X\DATA\VX121020\  
 Data File : VX019817.D  
 Acq On : 10 Dec 2020 12:01  
 Operator : JC/MD  
 Sample : L4993-09  
 Misc : 5.0mL/MSVOA\_X/WATER  
 ALS Vial : 8 Sample Multiplier: 1

Instrument :  
 MSVOA\_X  
 ClientSampleId :  
 TU032-32-5777-120820

Quant Time: Dec 11 00:49:32 2020  
 Quant Method : Z:\VOASRV\HPCHEM1\MSVOA\_X\METHOD\82X120420W.M  
 Quant Title : SW846 8260  
 QLast Update : Fri Dec 04 15:32:53 2020  
 Response via : Initial Calibration

Internal Standards	R.T.	QIon	Response	Conc	Units	Dev(Min)
1) Pentafluorobenzene	5.63	168	332922	50.00	ug/l	0.00
34) 1,4-Difluorobenzene	6.83	114	545124	50.00	ug/l	0.00
63) Chlorobenzene-d5	10.09	117	499948	50.00	ug/l	0.00
72) 1,4-Dichlorobenzene-d4	12.06	152	220866	50.00	ug/l	0.00

## System Monitoring Compounds

33) 1,2-Dichloroethane-d4	6.03	65	208987	47.76	ug/l	0.00
Spiked Amount	50.000	Range	61 - 141	Recovery	=	95.52%
35) Dibromofluoromethane	5.46	113	170562	48.41	ug/l	0.00
Spiked Amount	50.000	Range	69 - 133	Recovery	=	96.82%
50) Toluene-d8	8.70	98	663615	49.34	ug/l	0.00
Spiked Amount	50.000	Range	65 - 126	Recovery	=	98.68%
62) 4-Bromofluorobenzene	11.12	95	230692	45.06	ug/l	0.00
Spiked Amount	50.000	Range	58 - 135	Recovery	=	90.12%

## Target Compounds

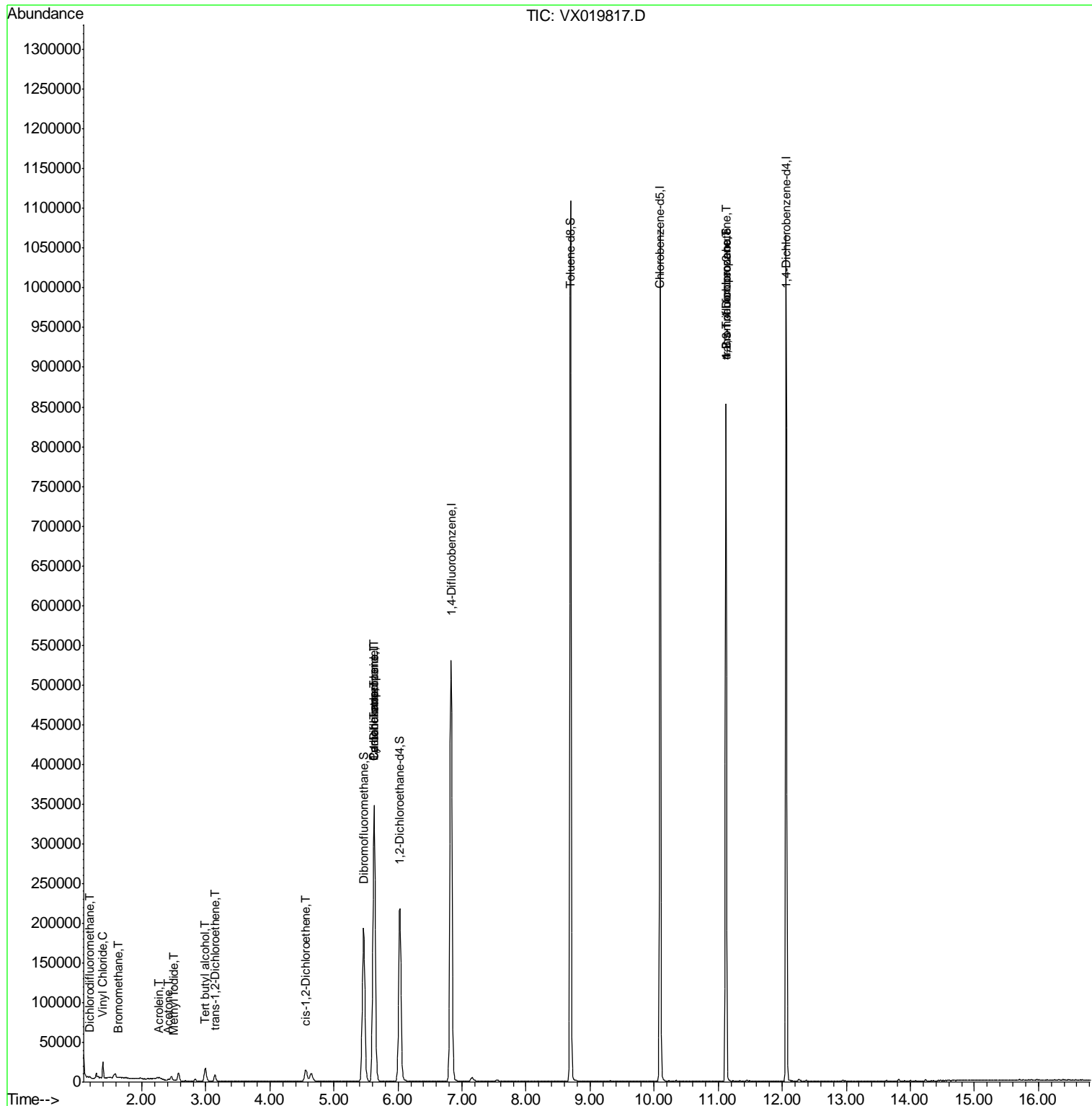
						Qvalue
2) Dichlorodifluoromethane	1.18	85	667	0.219	ug/l	91
4) Vinyl Chloride	1.39	62	11523	3.049	ug/l	100
5) Bromomethane	1.64	94	853	0.680	ug/l #	80
10) Methyl Iodide	2.50	142	1108	0.249	ug/l	96
11) Tert butyl alcohol	2.99	59	10107	8.713	ug/l #	78
13) Acrolein	2.28	56	113	0.234	ug/l #	14
16) Acetone	2.42	43	1699	1.033	ug/l	96
20) Methylene Chloride	2.84	84	917	Below Cal	#	85
21) trans-1,2-Dichloroethene	3.14	96	3265	0.918	ug/l	93
27) cis-1,2-Dichloroethene	4.56	96	9570	2.300	ug/l	88
31) Cyclohexane	5.63	56	6414	1.178	ug/l #	1
36) 1,1-Dichloropropene	5.63	75	25059	5.087	ug/l #	48
38) Carbon Tetrachloride	5.63	117	32856	6.811	ug/l #	16
76) 1,2,3-Trichloropropane	11.12	75	112620	22.735	ug/l #	39
81) trans-1,4-Dichloro-2-buten	11.12	75	112620	65.722	ug/l #	12

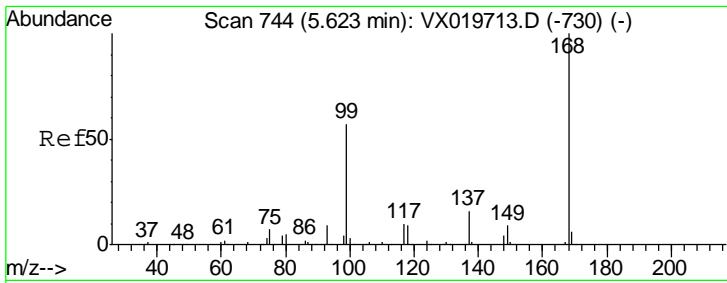
(#) = qualifier out of range (m) = manual integration (+) = signals summed

Data Path : Z:\VOASRV\HPCHEM1\MSVOA\_X\DATA\VX121020\  
 Data File : VX019817.D  
 Acq On : 10 Dec 2020 12:01  
 Operator : JC/MD  
 Sample : L4993-09  
 Misc : 5.0mL/MSVOA\_X/WATER  
 ALS Vial : 8 Sample Multiplier: 1

**Instrument :**  
 MSVOA\_X  
**Client Sampled :**  
 TU032-32-5777-120820

Quant Time: Dec 11 00:49:32 2020  
 Quant Method : Z:\VOASRV\HPCHEM1\MSVOA\_X\METHOD\82X120420W.M  
 Quant Title : SW846 8260  
 QLast Update : Fri Dec 04 15:32:53 2020  
 Response via : Initial Calibration

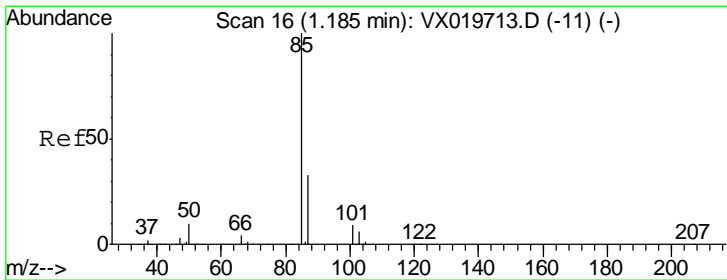
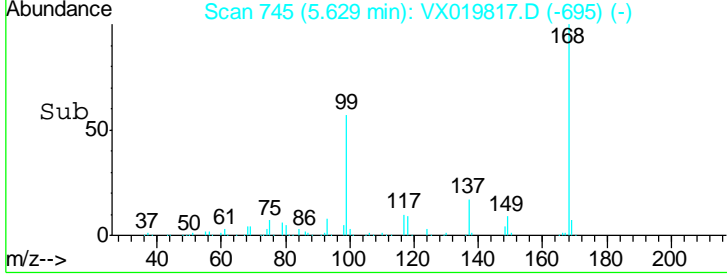
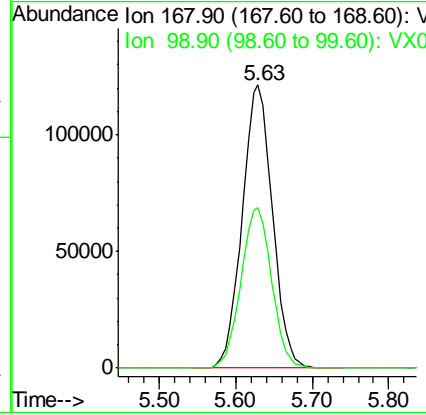
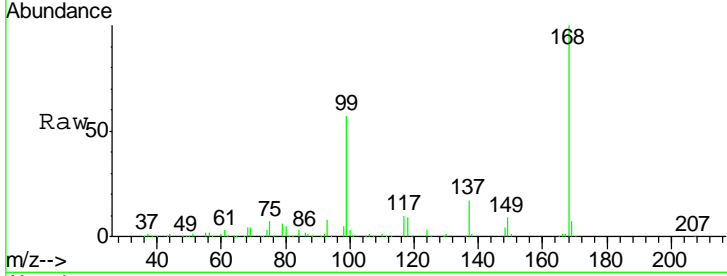




#1  
 Pentafluorobenzene  
 Concen: 50.000 ug/l  
 RT: 5.63 min Scan# 745  
 Delta R.T. 0.01 min  
 Lab File: VX019817.D  
 Acq: 10 Dec 2020 12:01

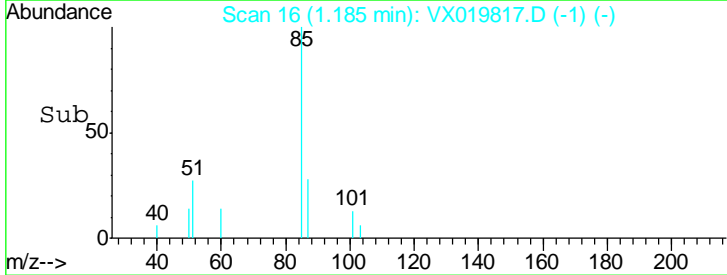
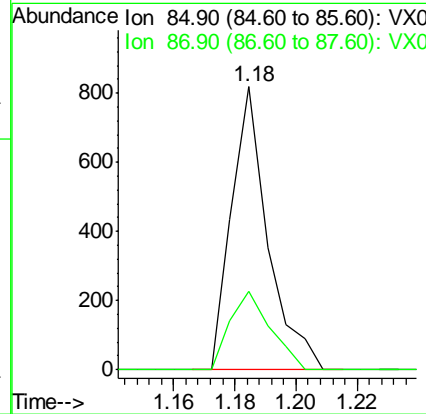
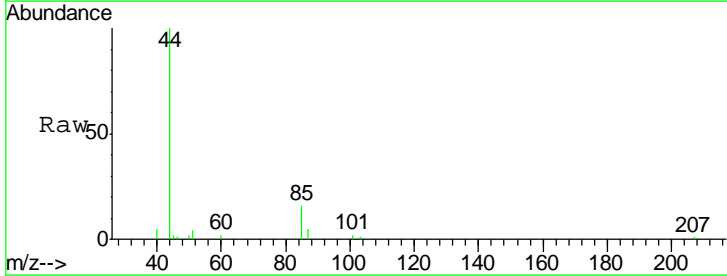
Instrument : MSVOA\_X  
 ClientSampled : TU032-32-5777-120820

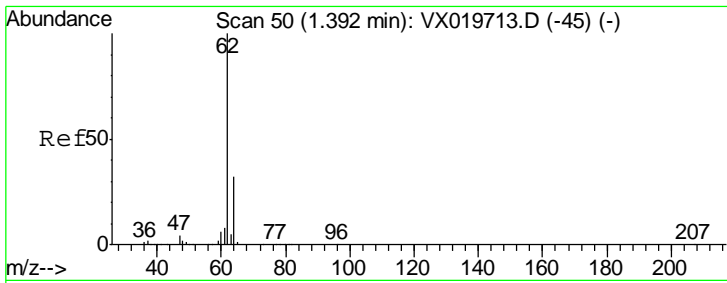
Tgt Ion: 168 Resp: 332922  
 Ion Ratio Lower Upper  
 168 100  
 99 56.8 45.8 68.6



#2  
 Dichlorodifluoromethane  
 Concen: 0.219 ug/l  
 RT: 1.18 min Scan# 16  
 Delta R.T. -0.00 min  
 Lab File: VX019817.D  
 Acq: 10 Dec 2020 12:01

Tgt Ion: 85 Resp: 667  
 Ion Ratio Lower Upper  
 85 100  
 87 27.9 16.4 49.2

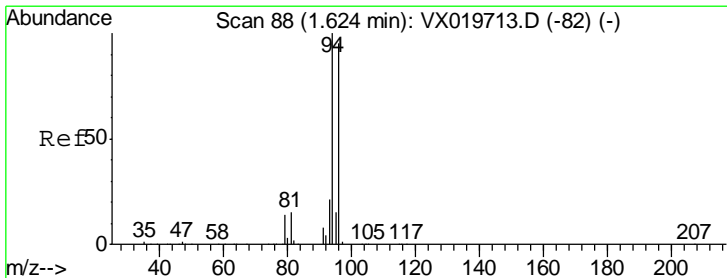
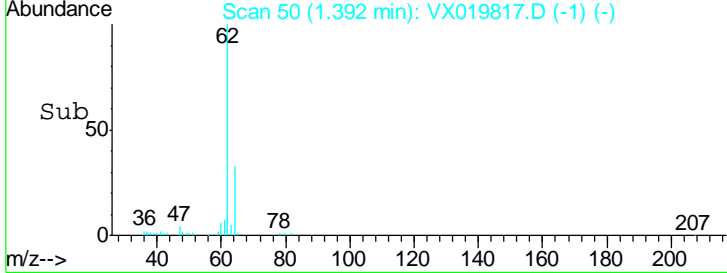
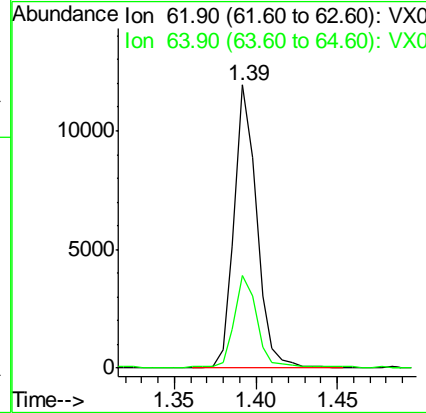
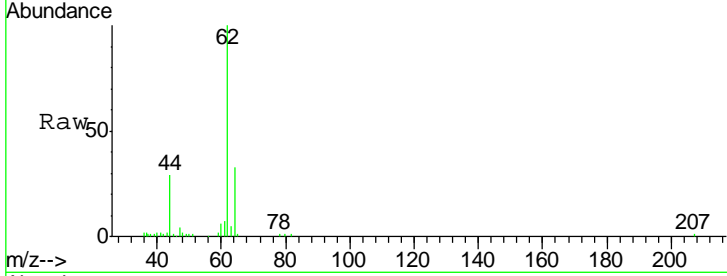




#4  
 Vinyl Chloride  
 Concen: 3.049 ug/l  
 RT: 1.39 min Scan# 50  
 Delta R.T. -0.00 min  
 Lab File: VX019817.D  
 Acq: 10 Dec 2020 12:01

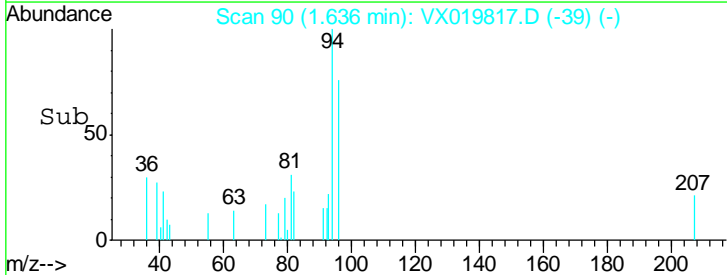
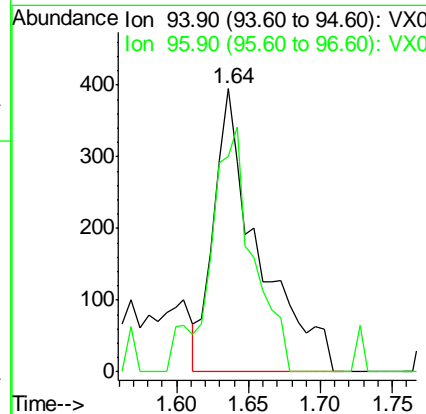
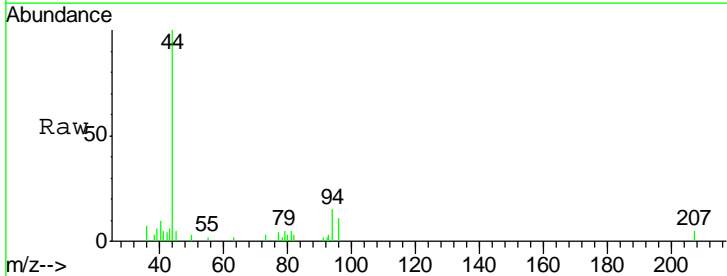
Instrument :  
 MSVOA\_X  
 ClientSampled :  
 TU032-32-5777-120820

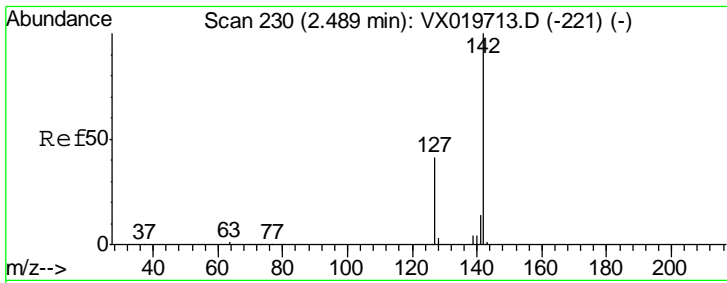
Tgt Ion: 62 Resp: 11523  
 Ion Ratio Lower Upper  
 62 100  
 64 32.3 25.7 38.5



#5  
 Bromomethane  
 Concen: 0.680 ug/l  
 RT: 1.64 min Scan# 90  
 Delta R.T. 0.01 min  
 Lab File: VX019817.D  
 Acq: 10 Dec 2020 12:01

Tgt Ion: 94 Resp: 853  
 Ion Ratio Lower Upper  
 94 100  
 96 75.9 76.4 114.6#

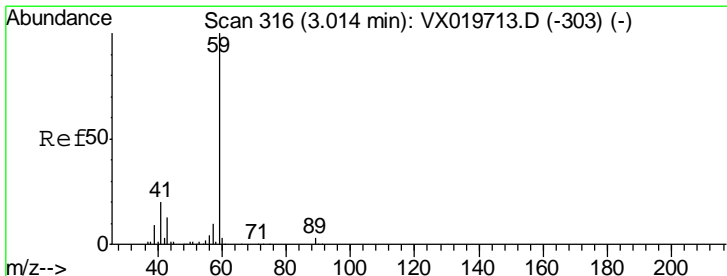
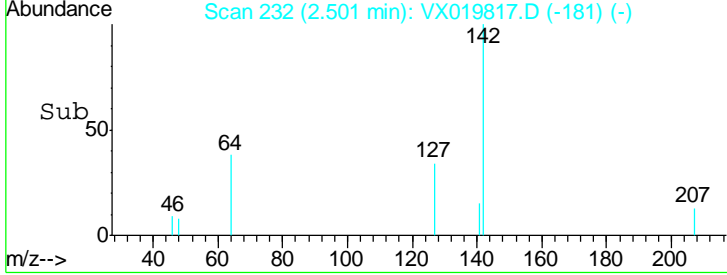
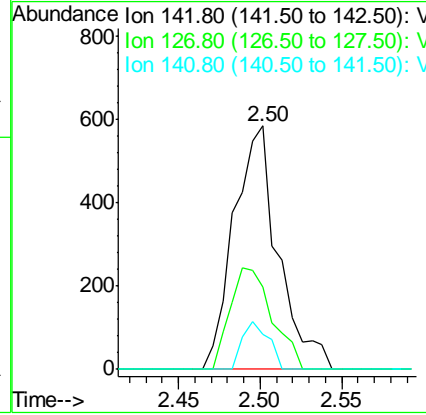
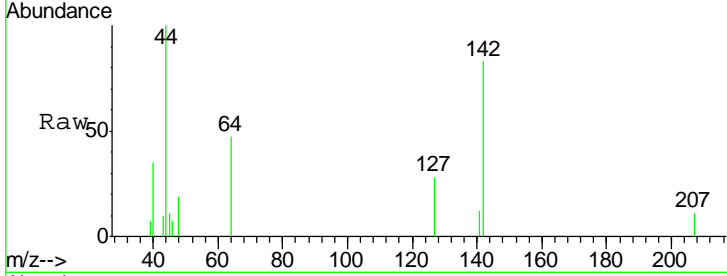




#10  
Methyl Iodide  
Concen: 0.249 ug/l  
RT: 2.50 min Scan# 232  
Delta R.T. 0.01 min  
Lab File: VX019817.D  
Acq: 10 Dec 2020 12:01

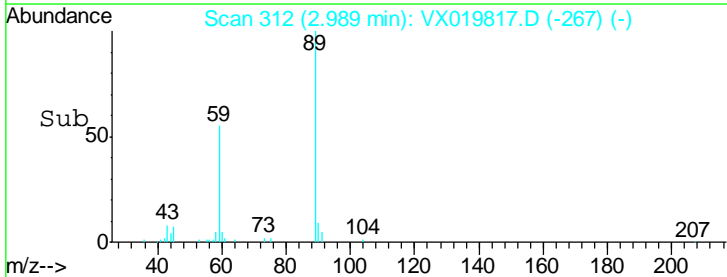
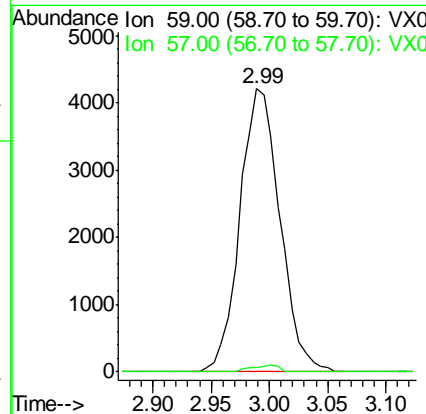
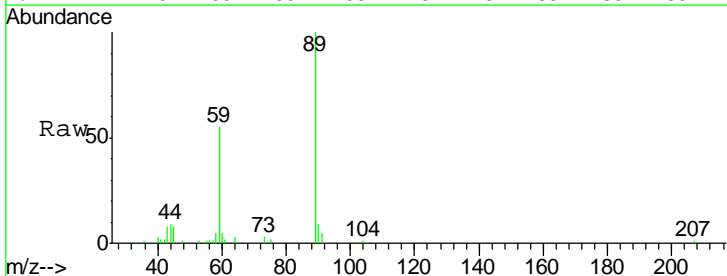
**Instrument :**  
MSVOA\_X  
**ClientSampled :**  
TU032-32-5777-120820

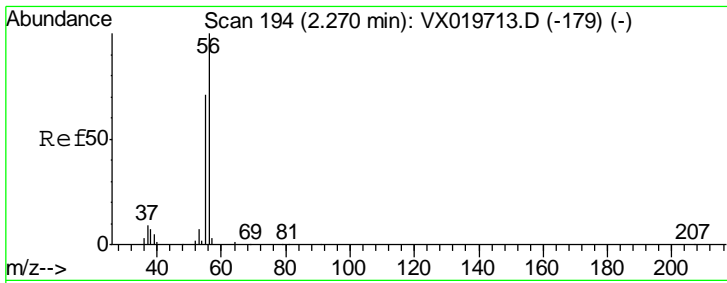
Tgt Ion	Resp	Lower	Upper
142	1108		
127	39.4	33.3	49.9
141	11.5	11.4	17.0



#11  
Tert butyl alcohol  
Concen: 8.713 ug/l  
RT: 2.99 min Scan# 312  
Delta R.T. -0.02 min  
Lab File: VX019817.D  
Acq: 10 Dec 2020 12:01

Tgt Ion	Resp	Lower	Upper
59	10107		
57	1.7	7.8	11.8#

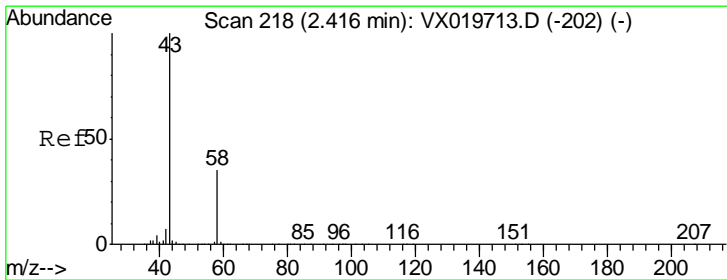
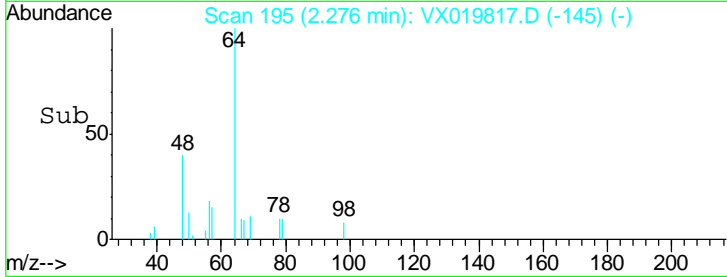
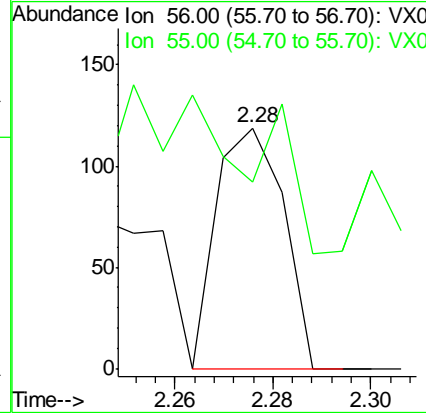
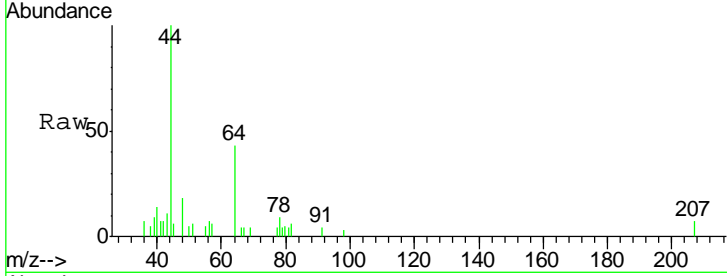




#13  
 Acrolein  
 Concen: 0.234 ug/l  
 RT: 2.28 min Scan# 195  
 Delta R.T. 0.01 min  
 Lab File: VX019817.D  
 Acq: 10 Dec 2020 12:01

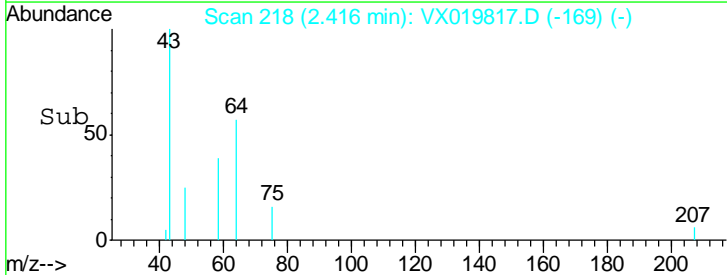
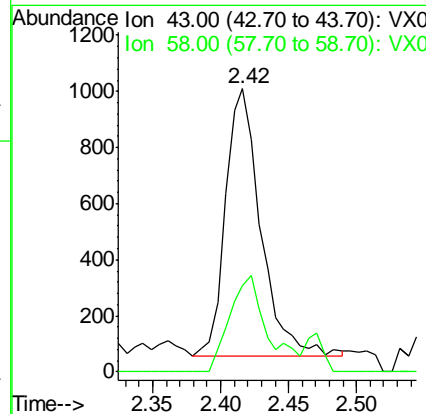
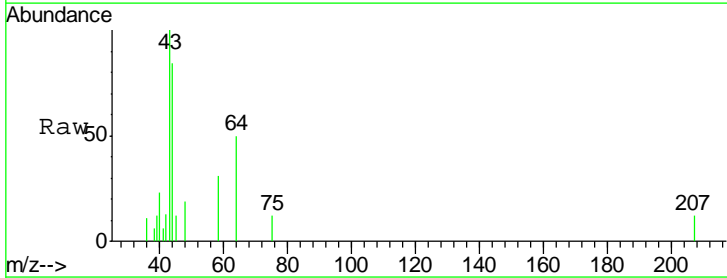
Instrument :  
 MSVOA\_X  
 ClientSampled :  
 TU032-32-5777-120820

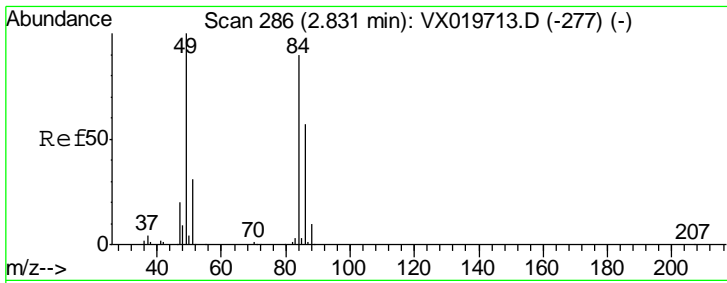
Tgt Ion: 56 Resp: 113  
 Ion Ratio Lower Upper  
 56 100  
 55 0.0 56.4 84.6#



#16  
 Acetone  
 Concen: 1.033 ug/l  
 RT: 2.42 min Scan# 218  
 Delta R.T. -0.00 min  
 Lab File: VX019817.D  
 Acq: 10 Dec 2020 12:01

Tgt Ion: 43 Resp: 1699  
 Ion Ratio Lower Upper  
 43 100  
 58 32.4 27.8 41.8

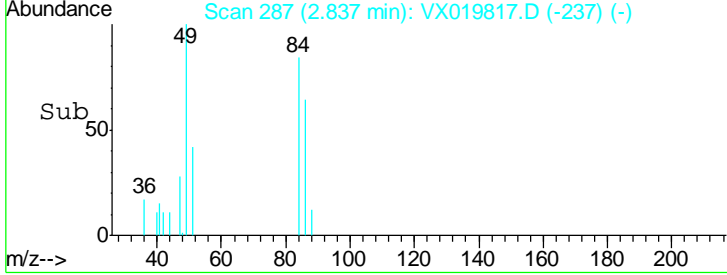
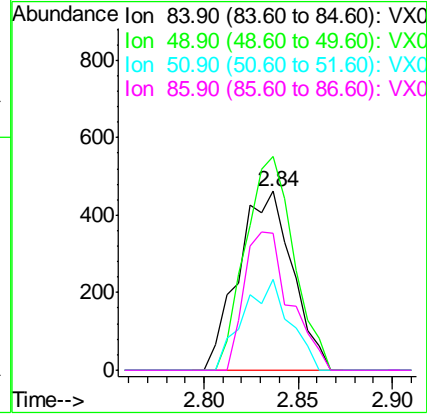
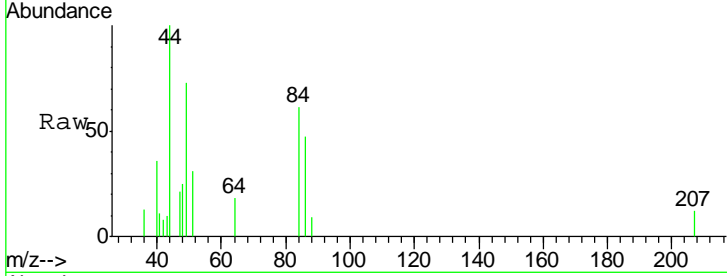




#20  
 Methylene Chloride  
 Concen: Below Cal  
 RT: 2.84 min Scan# 287  
 Delta R.T. 0.01 min  
 Lab File: VX019817.D  
 Acq: 10 Dec 2020 12:01

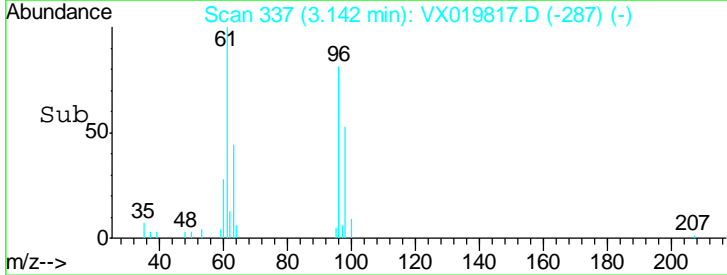
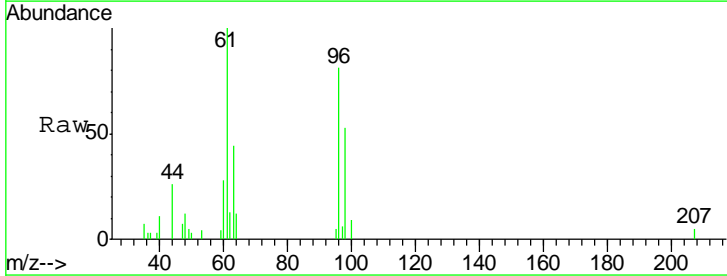
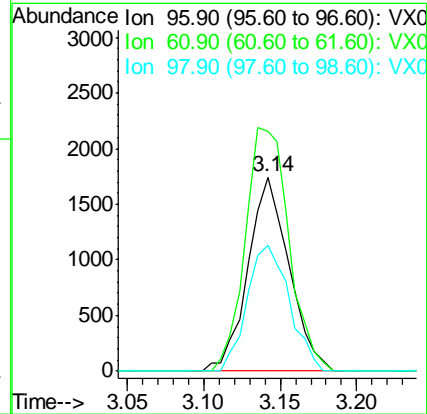
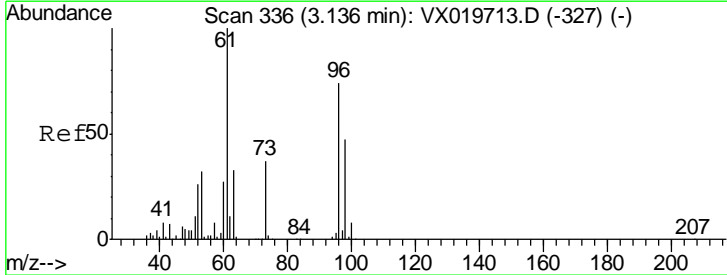
**Instrument :**  
 MSVOA\_X  
**ClientSampled :**  
 TU032-32-5777-120820

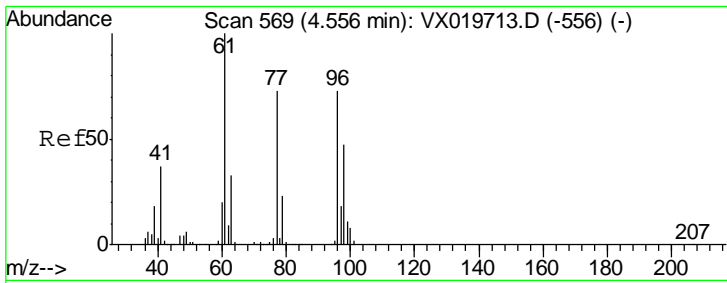
Tgt Ion	Resp	Lower	Upper
84	100		
49	119.5	88.6	132.8
51	50.5	27.0	40.6#
86	76.8	50.3	75.5#



#21  
 trans-1,2-Dichloroethene  
 Concen: 0.918 ug/l  
 RT: 3.14 min Scan# 337  
 Delta R.T. 0.01 min  
 Lab File: VX019817.D  
 Acq: 10 Dec 2020 12:01

Tgt Ion	Resp	Lower	Upper
96	100		
61	123.4	107.7	161.5
98	65.1	50.4	75.6

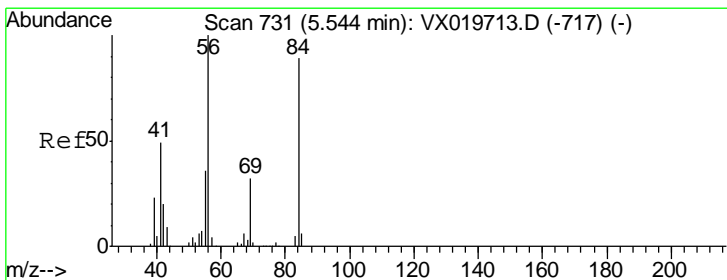
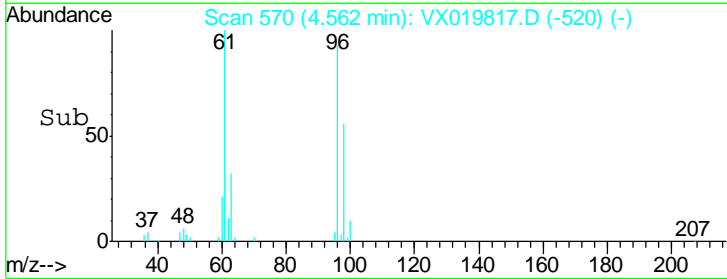
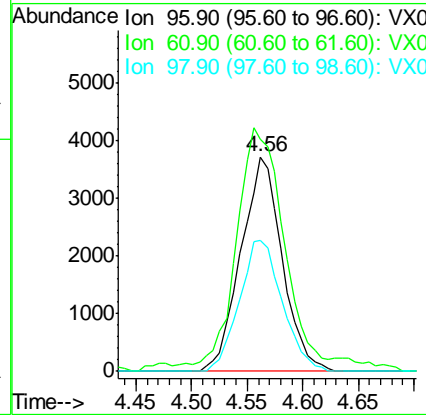
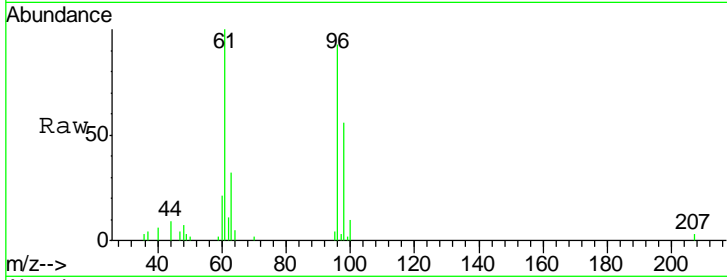




#27  
 cis-1,2-Dichloroethene  
 Concen: 2.300 ug/l  
 RT: 4.56 min Scan# 570  
 Delta R.T. 0.01 min  
 Lab File: VX019817.D  
 Acq: 10 Dec 2020 12:01

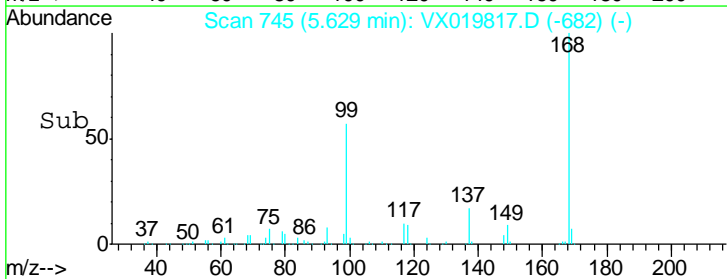
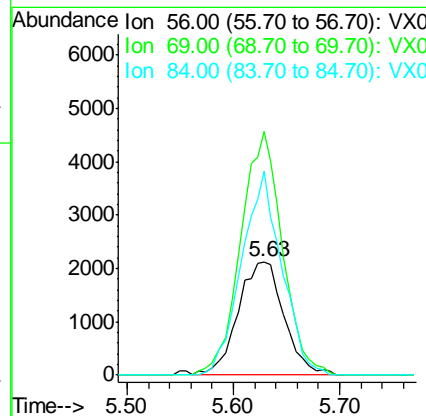
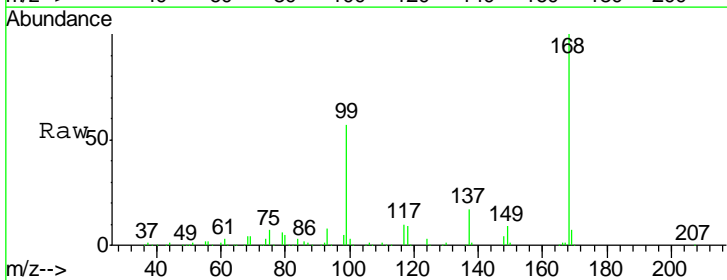
Instrument :  
 MSVOA\_X  
 ClientSampleId :  
 TU032-32-5777-120820

Tgt Ion	Resp	Lower	Upper
96	9570		
96	100		
61	122.8	0.0	285.6
98	63.3	0.0	129.6

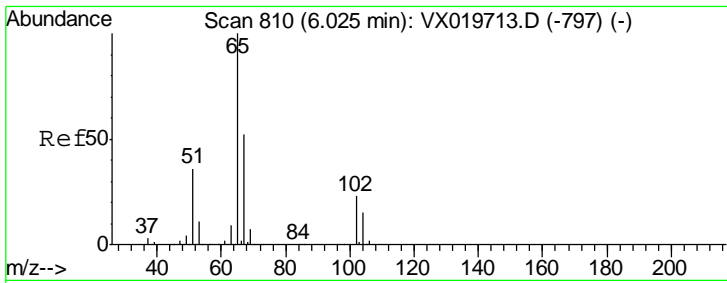


#31  
 Cyclohexane  
 Concen: 1.178 ug/l  
 RT: 5.63 min Scan# 745  
 Delta R.T. 0.09 min  
 Lab File: VX019817.D  
 Acq: 10 Dec 2020 12:01

Tgt Ion	Resp	Lower	Upper
56	6414		
56	100		
69	215.3	25.3	37.9#
84	180.8	71.4	107.0#



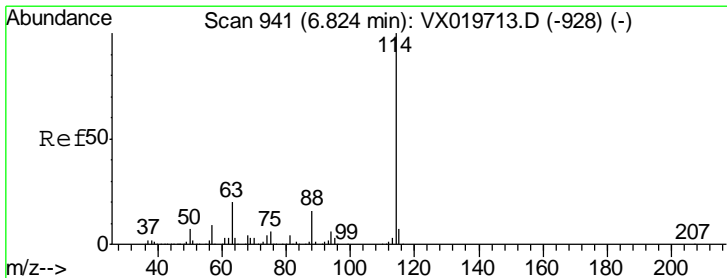
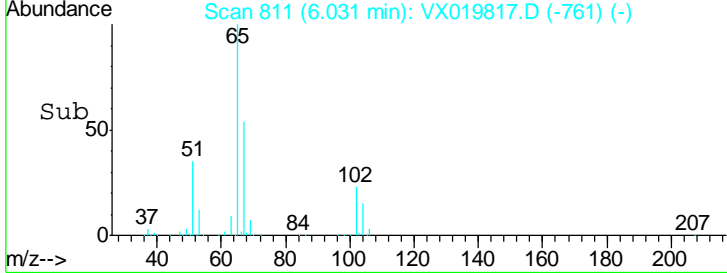
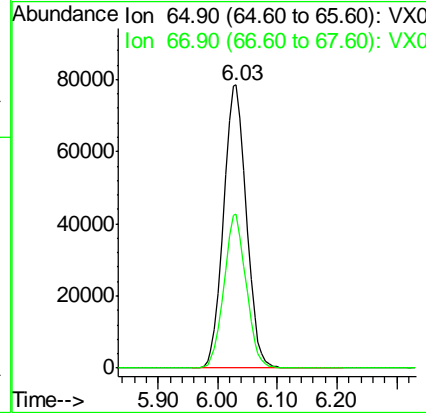
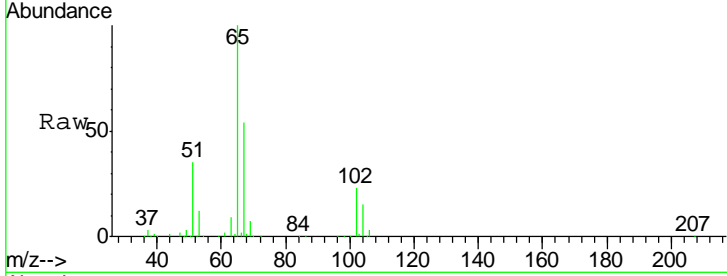




#33  
 1,2-Dichloroethane-d4  
 Concen: 47.762 ug/l  
 RT: 6.03 min Scan# 811  
 Delta R.T. 0.01 min  
 Lab File: VX019817.D  
 Acq: 10 Dec 2020 12:01

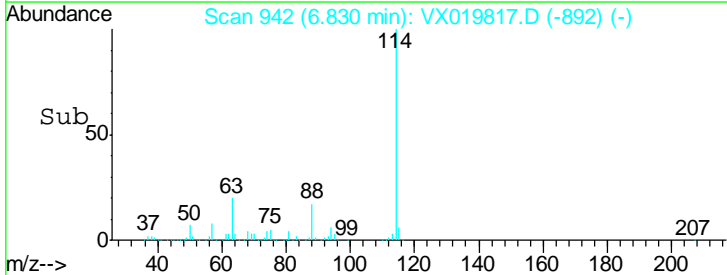
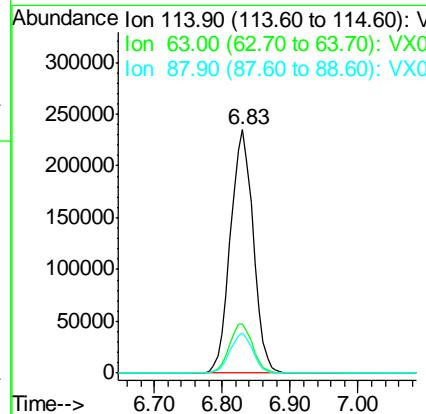
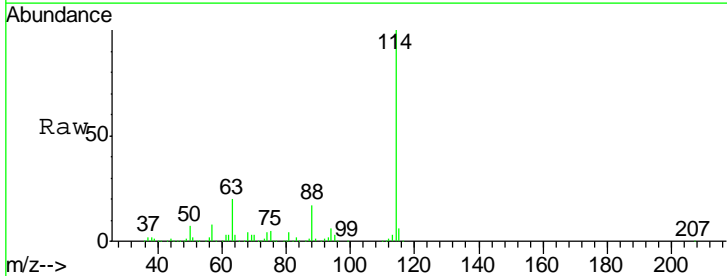
**Instrument :**  
 MSVOA\_X  
**ClientSampled :**  
 TU032-32-5777-120820

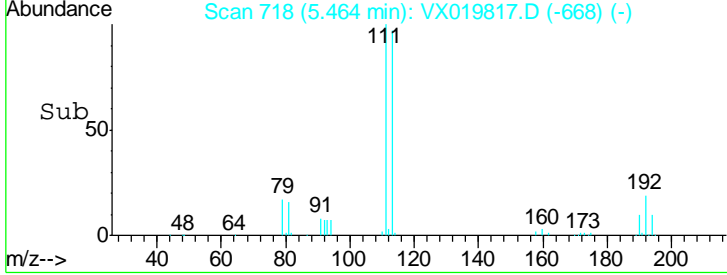
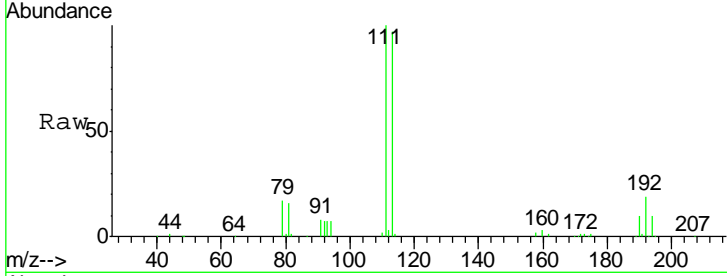
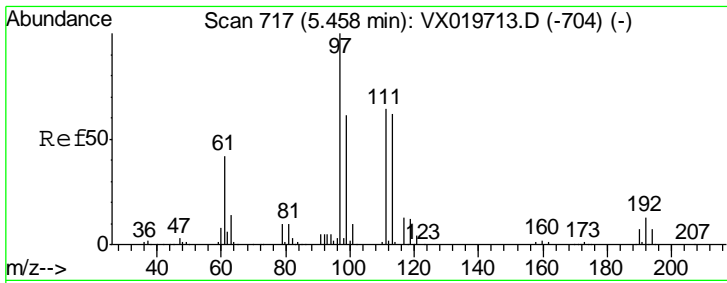
Tgt Ion: 65 Resp: 208987  
 Ion Ratio Lower Upper  
 65 100  
 67 52.7 0.0 105.4



#34  
 1,4-Difluorobenzene  
 Concen: 50.000 ug/l  
 RT: 6.83 min Scan# 942  
 Delta R.T. 0.01 min  
 Lab File: VX019817.D  
 Acq: 10 Dec 2020 12:01

Tgt Ion: 114 Resp: 545124  
 Ion Ratio Lower Upper  
 114 100  
 63 20.2 0.0 40.8  
 88 16.5 0.0 32.8

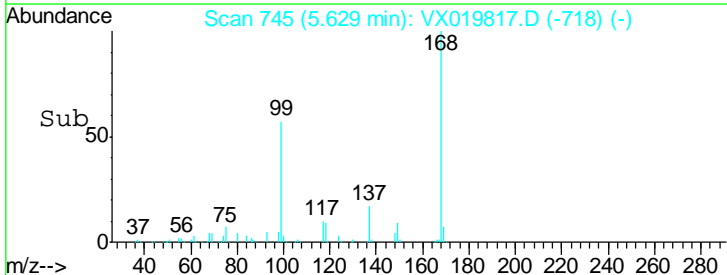
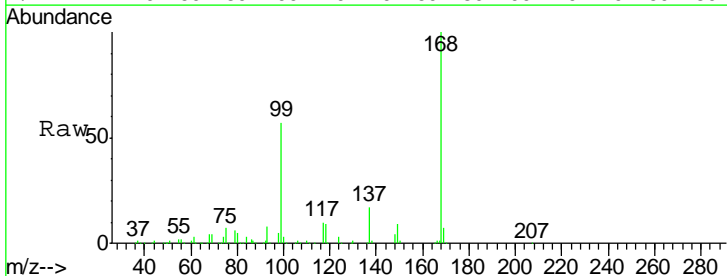
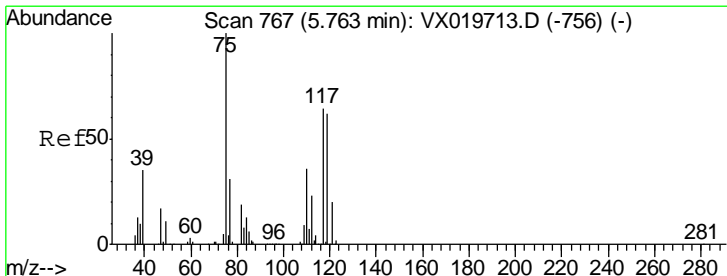
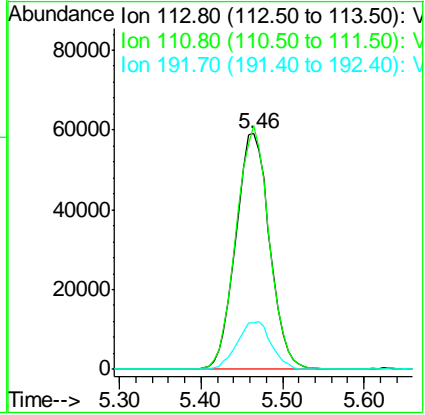




#35  
 Dibromofluoromethane  
 Concen: 48.413 ug/l  
 RT: 5.46 min Scan# 718  
 Delta R.T. 0.01 min  
 Lab File: VX019817.D  
 Acq: 10 Dec 2020 12:01

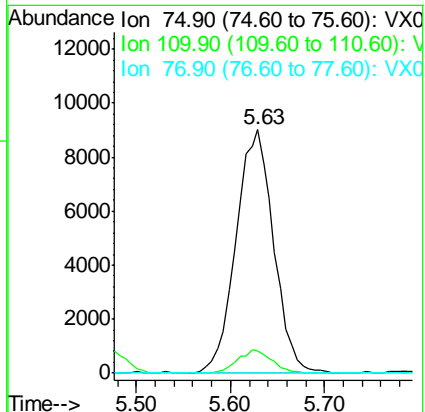
Instrument :  
 MSVOA\_X  
 ClientSampleId :  
 TU032-32-5777-120820

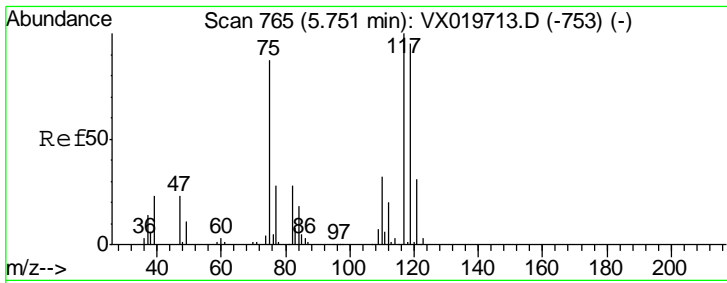
Tgt Ion	Resp	Lower	Upper
113	170562		
111	100.7	81.9	122.9
192	20.5	16.7	25.1



#36  
 1,1-Dichloropropene  
 Concen: 5.087 ug/l  
 RT: 5.63 min Scan# 745  
 Delta R.T. -0.13 min  
 Lab File: VX019817.D  
 Acq: 10 Dec 2020 12:01

Tgt Ion	Resp	Lower	Upper
75	25059		
110	8.7	18.1	54.4#
77	0.0	25.3	37.9#

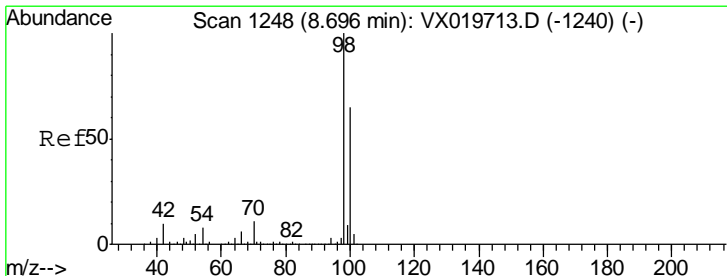
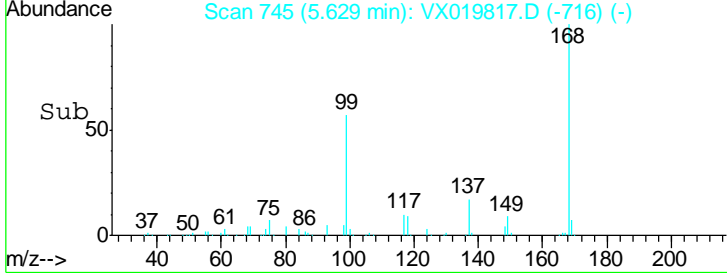
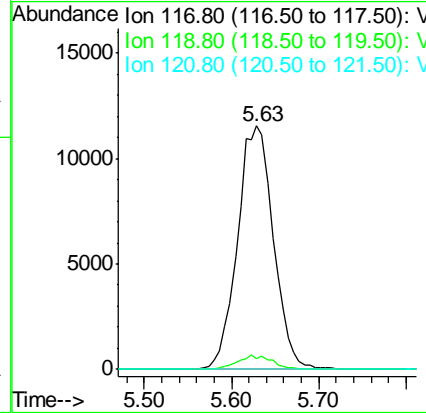
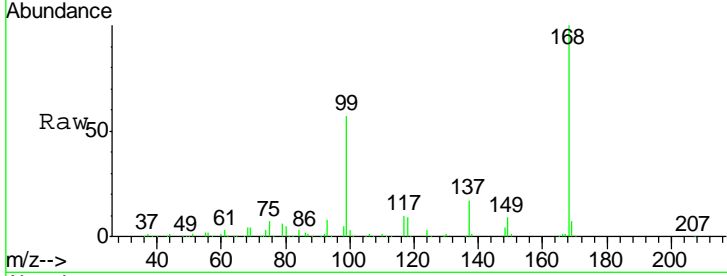




#38  
 Carbon Tetrachloride  
 Concen: 6.811 ug/l  
 RT: 5.63 min Scan# 745  
 Delta R.T. -0.12 min  
 Lab File: VX019817.D  
 Acq: 10 Dec 2020 12:01

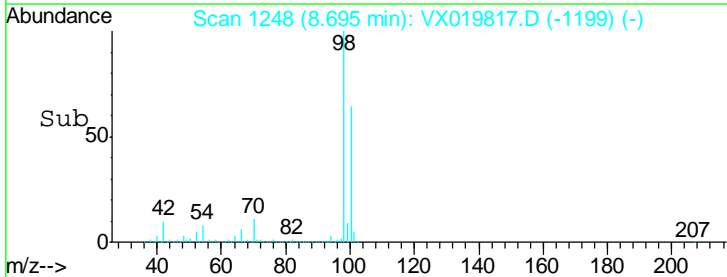
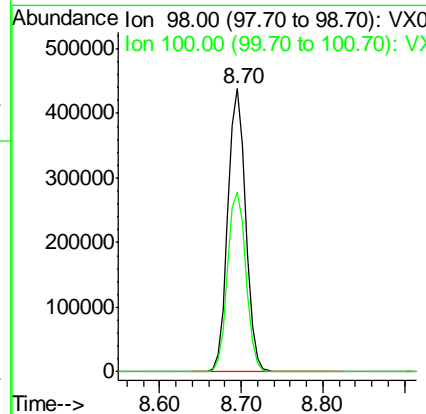
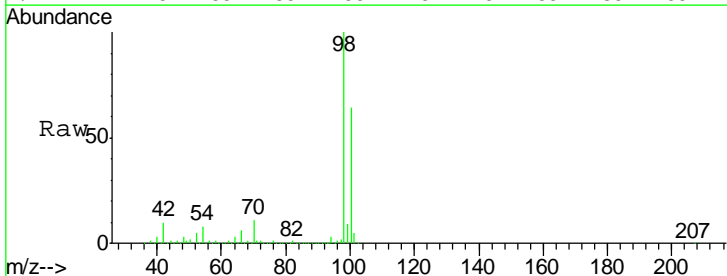
**Instrument :**  
 MSVOA\_X  
**ClientSampled :**  
 TU032-32-5777-120820

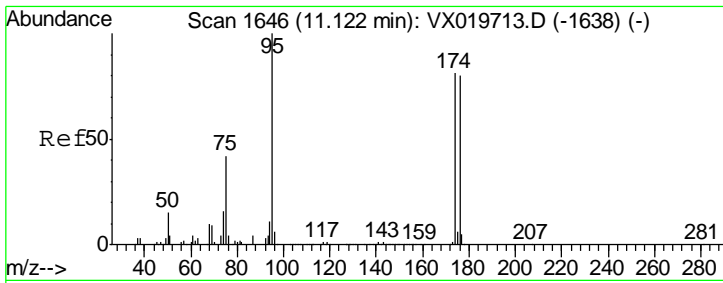
Tgt Ion	Resp	Lower	Upper
117	100		
119	4.3	76.2	114.2#
121	0.0	24.8	37.2#



#50  
 Toluene-d8  
 Concen: 49.339 ug/l  
 RT: 8.70 min Scan# 1248  
 Delta R.T. -0.00 min  
 Lab File: VX019817.D  
 Acq: 10 Dec 2020 12:01

Tgt Ion	Resp	Lower	Upper
98	100		
100	65.5	51.9	77.9

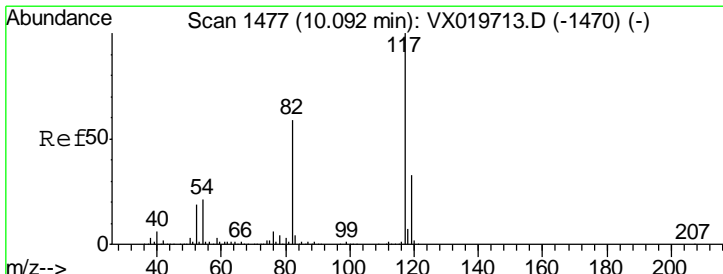
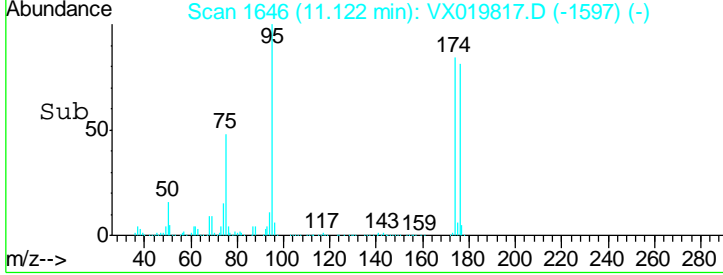
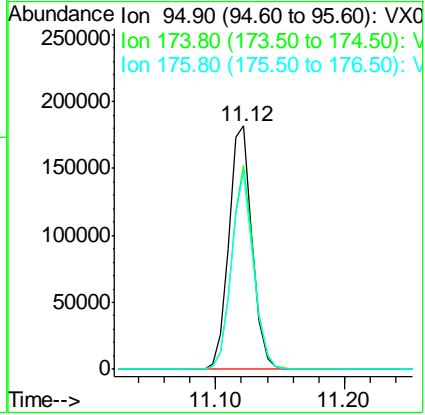
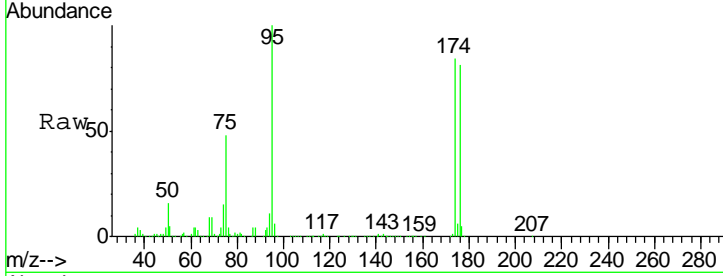




#62  
 4-Bromofluorobenzene  
 Concen: 45.063 ug/l  
 RT: 11.12 min Scan# 1646  
 Delta R.T. -0.00 min  
 Lab File: VX019817.D  
 Acq: 10 Dec 2020 12:01

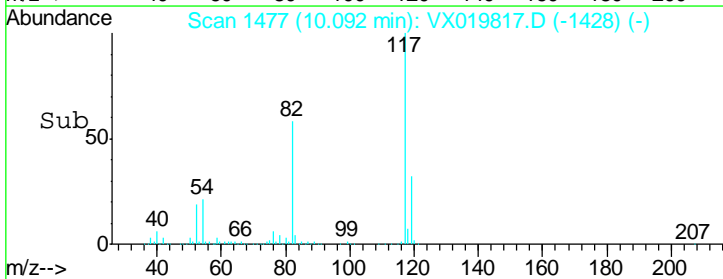
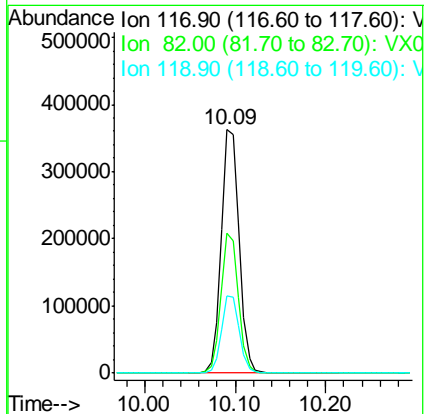
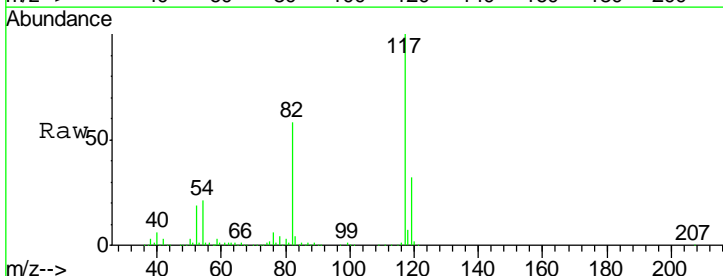
Instrument : MSVOA\_X  
 ClientSampleId : TU032-32-5777-120820

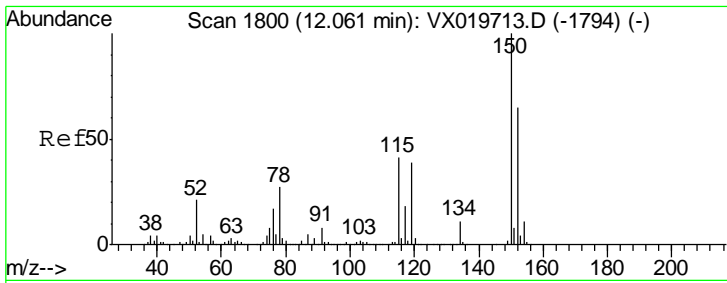
Tgt Ion	Resp	Lower	Upper
95	230692		
174	78.7	0.0	154.6
176	76.3	0.0	155.8



#63  
 Chlorobenzene-d5  
 Concen: 50.000 ug/l  
 RT: 10.09 min Scan# 1477  
 Delta R.T. -0.00 min  
 Lab File: VX019817.D  
 Acq: 10 Dec 2020 12:01

Tgt Ion	Resp	Lower	Upper
117	499948		
82	57.7	47.4	71.2
119	31.8	26.6	39.8

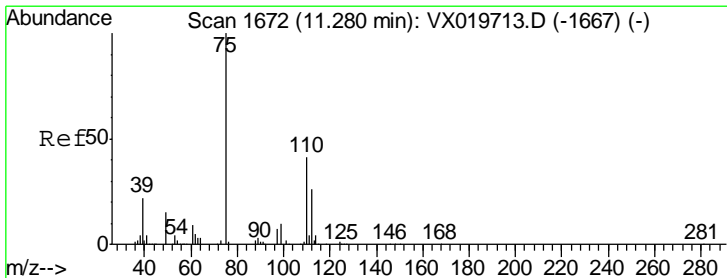
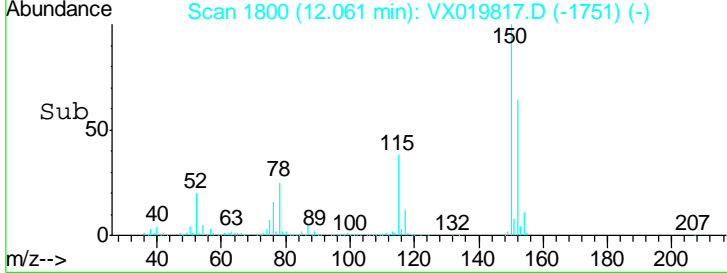
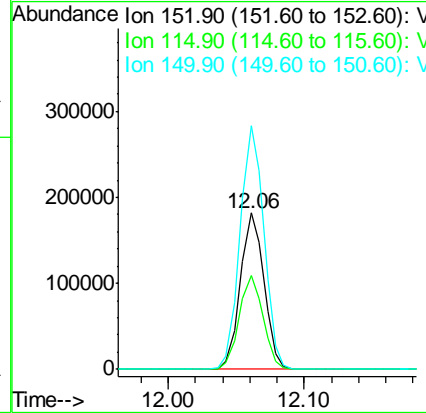
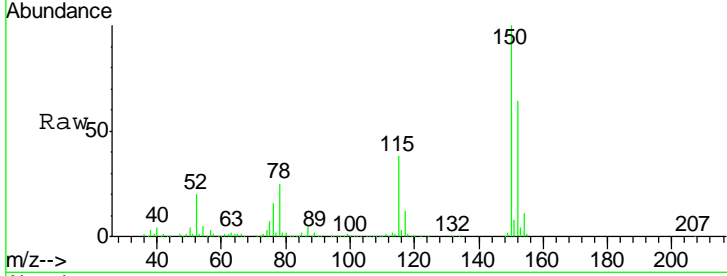




#72  
 1,4-Dichlorobenzene-d4  
 Concen: 50.000 ug/l  
 RT: 12.06 min Scan# 1800  
 Delta R.T. -0.00 min  
 Lab File: VX019817.D  
 Acq: 10 Dec 2020 12:01

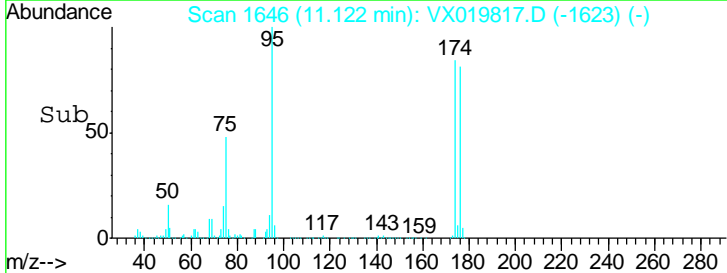
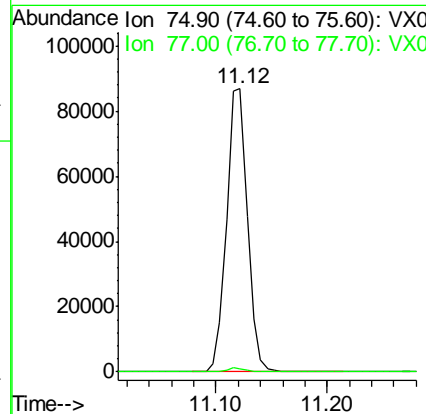
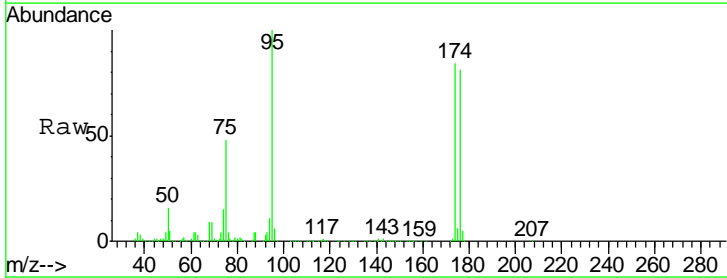
Instrument : MSVOA\_X  
 ClientSampled : TU032-32-5777-120820

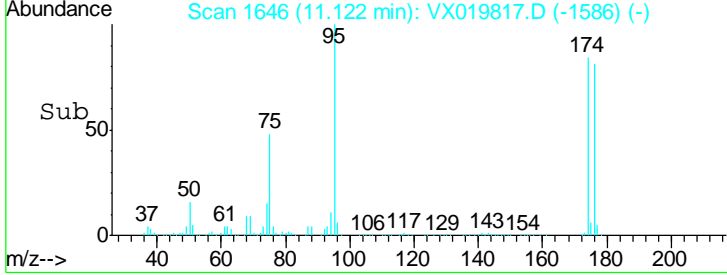
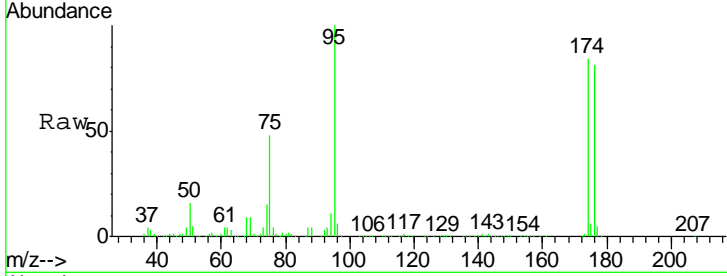
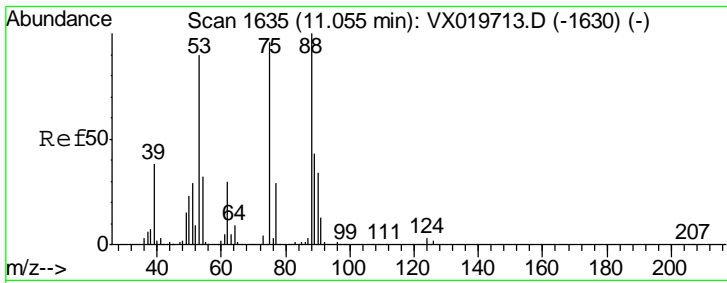
Tgt Ion	Resp	Lower	Upper
152	100		
115	60.0	41.1	123.3
150	157.3	0.0	349.0



#76  
 1,2,3-Trichloropropane  
 Concen: 22.735 ug/l  
 RT: 11.12 min Scan# 1646  
 Delta R.T. -0.16 min  
 Lab File: VX019817.D  
 Acq: 10 Dec 2020 12:01

Tgt Ion	Resp	Lower	Upper
75	100		
77	1.3	19.1	57.5#





#81  
 trans-1,4-Dichloro-2-butene  
 Concen: 65.722 ug/l  
 RT: 11.12 min Scan# 1646  
 Delta R.T. 0.07 min  
 Lab File: VX019817.D  
 Acq: 10 Dec 2020 12:01

Instrument : MSVOA\_X  
 ClientSampleId : TU032-32-5777-120820

Tgt Ion	Resp	Lower	Upper
75	112620		
53	0.0	74.5	111.7#
89	0.0	37.9	56.9#

