

Data Path : Z:\voasrv\HPCHEM1\MSVOA_X\Data\VX121021\
 Data File : VX025709.D
 Acq On : 10 Dec 2021 18:24
 Operator : JC/MD
 Sample : M4981-01
 Misc : 5.0mL/MSVOA_X/WATER
 ALS Vial : 19 Sample Multiplier: 1

Instrument :
 MSVOA_X
 ClientSampleId :
 COCM6

Integration Parameters: LSCINT.P

Integrator: RTE
 Smoothing : OFF
 Sampling : 1
 Start Thrs : 0.2
 Stop Thrs : 0

Filtering: 5
 Min Area: 0 % of largest Peak
 Max Peaks: 100
 Peak Location: TOP

If leading or trailing edge < 100 prefer < Baseline drop else tangent >
 Peak separation: 5

Method : Z:\voasrv\HPCHEM1\MSVOA_X\Method\SFAMXLM112221WMA.M
 Title : VOC Analysis

Signal : TIC: VX025709.D\data.ms

peak #	R.T. min	first scan	max scan	last scan	PK TY	peak height	corr. area	corr. % max.	% of total
1	1.368	43	46	53	rBV	53205	50783	13.71%	1.731%
2	1.666	91	95	104	rVB	39840	53075	14.33%	1.809%
3	2.306	193	200	211	rBV	82077	132105	35.67%	4.503%
4	2.800	277	281	282	rVB	378	400	0.11%	0.014%
5	2.947	300	305	312	rVB3	1407	3087	0.83%	0.105%
6	3.959	470	471	472	rBV	414	198	0.05%	0.007%
7	4.312	528	529	531	rBV	328	157	0.04%	0.005%
8	4.458	545	553	570	rBV	27940	78363	21.16%	2.671%
9	4.739	598	599	601	rBV	274	141	0.04%	0.005%
10	4.861	617	619	621	rBV	338	371	0.10%	0.013%
11	5.062	641	652	668	rVB	49404	151873	41.01%	5.177%
12	5.592	737	739	743	rVB2	283	361	0.10%	0.012%
13	5.757	764	766	767	rBV2	303	219	0.06%	0.007%
14	5.836	777	779	780	rBV	401	242	0.07%	0.008%
15	5.970	790	801	813	rBV2	124558	370364	100.00%	12.624%
16	6.159	830	832	834	rBV	334	361	0.10%	0.012%
17	6.763	923	931	945	rVB	106244	248954	67.22%	8.486%
18	6.958	962	963	964	rBV	447	184	0.05%	0.006%
19	7.117	982	989	994	rBV3	2003	4532	1.22%	0.154%
20	7.184	998	1000	1001	rBV	241	163	0.04%	0.006%
21	7.312	1012	1021	1034	rVB	78256	167195	45.14%	5.699%
22	7.409	1034	1037	1038	rBV	424	435	0.12%	0.015%
23	7.598	1067	1068	1071	rVB	253	136	0.04%	0.005%
24	7.726	1088	1089	1091	rBV2	224	225	0.06%	0.008%
25	7.812	1101	1103	1106	rVB	432	411	0.11%	0.014%
26	7.848	1106	1109	1110	rBV	330	340	0.09%	0.012%
27	7.946	1123	1125	1127	rBV	234	175	0.05%	0.006%
28	7.994	1132	1133	1135	rBV	276	188	0.05%	0.006%
29	8.141	1155	1157	1158	rBV	182	105	0.03%	0.004%
30	8.257	1174	1176	1178	rBV	223	174	0.05%	0.006%
31	8.324	1181	1187	1197	rVB	54450	89060	24.05%	3.036%
32	8.653	1234	1241	1249	rBV	193840	306502	82.76%	10.447%
33	8.860	1274	1275	1277	rBV	295	169	0.05%	0.006%
34	8.952	1284	1290	1300	rVB	39311	57286	15.47%	1.953%
35	9.116	1315	1317	1318	rVB	462	317	0.09%	0.011%
36	9.128	1318	1319	1321	rBV	482	376	0.10%	0.013%

Data Path : Z:\voasrv\HPCHEM1\MSVOA_X\Data\VX121021\
 Data File : VX025709.D
 Acq On : 10 Dec 2021 18:24
 Operator : JC/MD
 Sample : M4981-01
 Misc : 5.0mL/MSVOA_X/WATER
 ALS Vial : 19 Sample Multiplier: 1

Instrument :
 MSVOA_X
 ClientSampleId :
 COCM6

Integration Parameters: LSCINT.P

Integrator: RTE
 Smoothing : OFF
 Sampling : 1
 Start Thrs : 0.2
 Stop Thrs : 0

Filtering: 5
 Min Area: 0 % of largest Peak
 Max Peaks: 100
 Peak Location: TOP

If leading or trailing edge < 100 prefer < Baseline drop else tangent >
 Peak separation: 5

Method : Z:\voasrv\HPCHEM1\MSVOA_X\Method\SFAMXLM112221WMA.M
 Title : VOC Analysis

37	9.147	1321	1322	1325	rVB2	417	388	0.10%	0.013%
38	9.177	1325	1327	1331	rBV	325	428	0.12%	0.015%
39	9.275	1341	1343	1346	rVB2	764	760	0.21%	0.026%
40	9.305	1346	1348	1349	rBV	342	250	0.07%	0.009%
41	9.317	1349	1350	1352	rBV	455	372	0.10%	0.013%
42	9.384	1356	1361	1375	rBV	120147	173928	46.96%	5.928%
43	9.519	1382	1383	1385	rBV	348	167	0.05%	0.006%
44	9.622	1398	1400	1406	rVB	307	357	0.10%	0.012%
45	9.671	1406	1408	1412	rBV	306	300	0.08%	0.010%
46	9.756	1421	1422	1423	rBV	226	90	0.02%	0.003%
47	9.775	1423	1425	1426	rVV	241	110	0.03%	0.004%
48	9.890	1442	1444	1446	rBV	388	383	0.10%	0.013%
49	9.994	1457	1461	1463	rBV	345	421	0.11%	0.014%
50	10.018	1463	1465	1466	rVV	414	338	0.09%	0.012%
51	10.055	1466	1471	1489	rVB	229848	305971	82.61%	10.429%
52	10.177	1489	1491	1492	rBV	248	213	0.06%	0.007%
53	10.250	1499	1503	1506	rBV2	292	559	0.15%	0.019%
54	10.396	1526	1527	1529	rBV	361	213	0.06%	0.007%
55	10.482	1537	1541	1543	rBV	448	390	0.11%	0.013%
56	10.695	1574	1576	1578	rBV	229	134	0.04%	0.005%
57	10.835	1597	1599	1602	rBV	326	416	0.11%	0.014%
58	11.037	1631	1632	1634	rBV	206	125	0.03%	0.004%
59	11.091	1639	1641	1642	rBV2	198	135	0.04%	0.005%
60	11.122	1642	1646	1649	rBV	1390	1677	0.45%	0.057%
61	11.195	1653	1658	1667	rVB	143885	182732	49.34%	6.228%
62	11.396	1690	1691	1693	rBV	233	157	0.04%	0.005%
63	11.475	1700	1704	1706	rBV	355	398	0.11%	0.014%
64	11.567	1718	1719	1721	rVB	236	116	0.03%	0.004%
65	11.725	1743	1745	1746	rBV	369	314	0.08%	0.011%
66	11.750	1746	1749	1754	rVB3	1280	1601	0.43%	0.055%
67	11.969	1783	1785	1786	rBV	231	126	0.03%	0.004%
68	11.988	1786	1788	1789	rVV	210	129	0.03%	0.004%
69	12.024	1789	1794	1804	rVV	224518	276542	74.67%	9.426%
70	12.323	1837	1843	1851	rVB	202747	260275	70.28%	8.871%
71	12.378	1851	1852	1856	rVB	455	338	0.09%	0.012%
72	12.427	1858	1860	1864	rVB2	371	437	0.12%	0.015%
73	12.457	1864	1865	1866	rBV	276	161	0.04%	0.005%
74	12.622	1890	1892	1893	rVB	367	183	0.05%	0.006%
75	14.127	2137	2139	2143	rVB3	756	1007	0.27%	0.034%
76	14.408	2182	2185	2187	rBV	358	399	0.11%	0.014%

Data Path : Z:\voasrv\HPCHEM1\MSVOA_X\Data\VX121021\
Data File : VX025709.D
Acq On : 10 Dec 2021 18:24
Operator : JC/MD
Sample : M4981-01
Misc : 5.0mL/MSVOA_X/WATER
ALS Vial : 19 Sample Multiplier: 1

Instrument :
MSVOA_X
ClientSampleId :
C0CM6

Integration Parameters: LSCINT.P
Integrator: RTE
Smoothing : OFF Filtering: 5
Sampling : 1 Min Area: 0 % of largest Peak
Start Thrs: 0.2 Max Peaks: 100
Stop Thrs : 0 Peak Location: TOP

If leading or trailing edge < 100 prefer < Baseline drop else tangent >
Peak separation: 5

Method : Z:\voasrv\HPCHEM1\MSVOA_X\Method\SFAMXLM112221WMA.M
Title : VOC Analysis

77	14.481	2196	2197	2201	rBV	334	432	0.12%	0.015%
78	15.213	2314	2317	2318	rBV	518	566	0.15%	0.019%
79	15.274	2325	2327	2329	rBV3	340	210	0.06%	0.007%
80	15.365	2339	2342	2343	rBV	324	347	0.09%	0.012%
81	16.395	2510	2511	2513	rBV	359	228	0.06%	0.008%

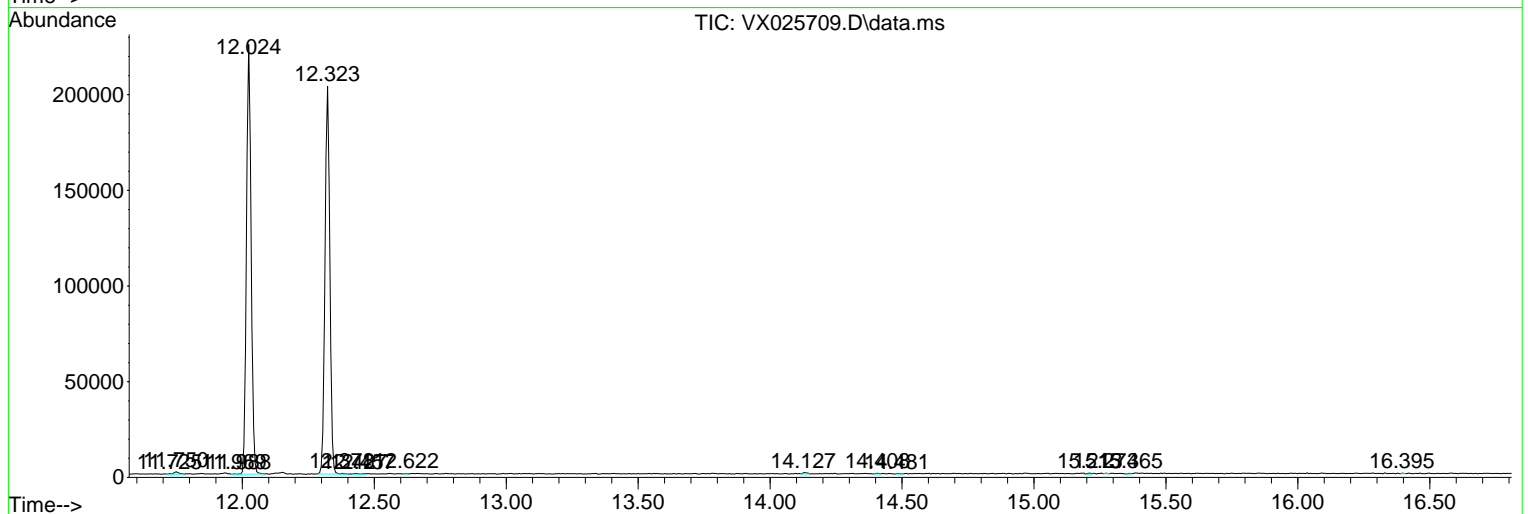
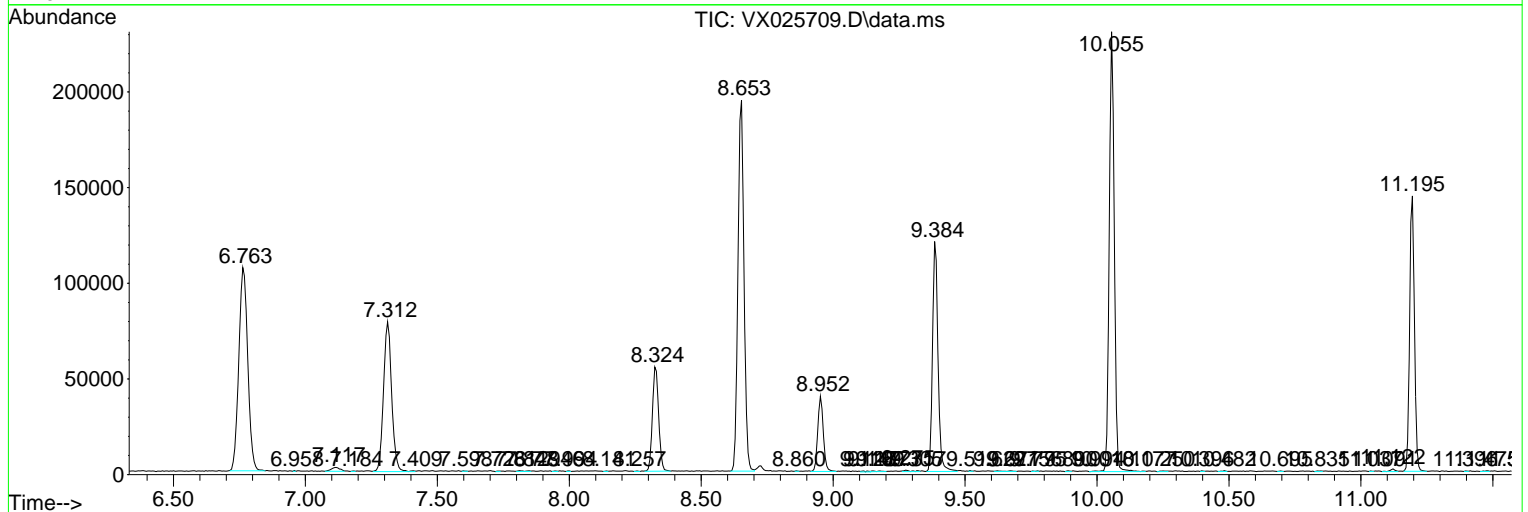
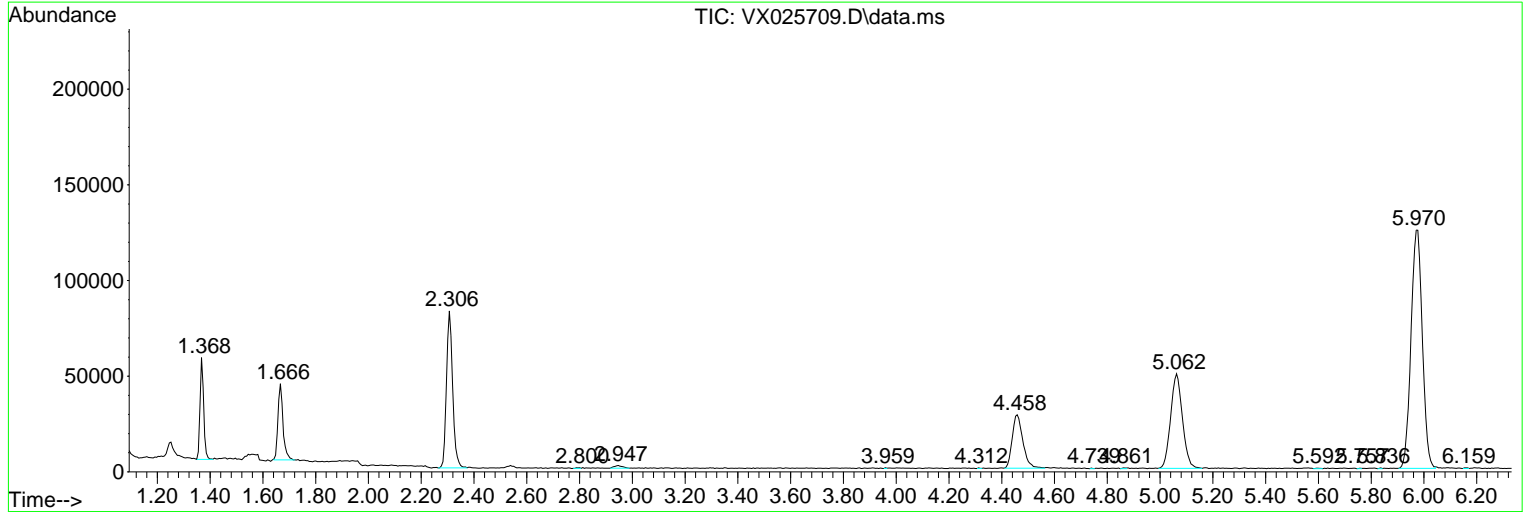
Sum of corrected areas: 2933850

Data Path : Z:\voasrv\HPCHEM1\MSVOA_X\Data\VX121021\
 Data File : VX025709.D
 Acq On : 10 Dec 2021 18:24
 Operator : JC/MD
 Sample : M4981-01
 Misc : 5.0mL/MSVOA_X/WATER
 ALS Vial : 19 Sample Multiplier: 1

Instrument :
 MSVOA_X
 ClientSampleId :
 COCM6

Quant Method : Z:\voasrv\HPCHEM1\MSVOA_X\Method\SFAMXLM112221WMA.M
 Quant Title : VOC Analysis

TIC Library : C:\Database\NIST0.L
 TIC Integration Parameters: LSCINT.P



Data Path : Z:\voasrv\HPCHEM1\MSVOA_X\Data\VX121021\
Data File : VX025709.D
Acq On : 10 Dec 2021 18:24
Operator : JC/MD
Sample : M4981-01
Misc : 5.0mL/MSVOA_X/WATER
ALS Vial : 19 Sample Multiplier: 1

Instrument :
MSVOA_X
ClientSampleId :
C0CM6

Quant Method : Z:\voasrv\HPCHEM1\MSVOA_X\Method\SFAMXLM112221WMA.M
Quant Title : VOC Analysis

TIC Library : C:\Database\NIST0.L
TIC Integration Parameters: LSCINT.P

No Library Search Compounds Detected

Data Path : Z:\voasrv\HPCHEM1\MSVOA_X\Data\VX121021\
Data File : VX025709.D
Acq On : 10 Dec 2021 18:24
Operator : JC/MD
Sample : M4981-01
Misc : 5.0mL/MSVOA_X/WATER
ALS Vial : 19 Sample Multiplier: 1

Instrument :
MSVOA_X
ClientSampleId :
C0CM6

Quant Method : Z:\voasrv\HPCHEM1\MSVOA_X\Method\SFAMXLM112221WMA.M
Quant Title : VOC Analysis

TIC Library : C:\Database\NIST0.L
TIC Integration Parameters: LSCINT.P

TIC Top Hit name	RT	EstConc	Units	Response	--Internal Standard--		
					#	RT	Resp Conc
