

Data Path : Z:\voasrv\HPCHEM1\MSVOA_X\Data\VX121024\
 Data File : VX044200.D
 Acq On : 10 Dec 2024 11:59
 Operator : JC/MD
 Sample : P5164-05RE
 Misc : 5.0mL/MSVOA_X/WATER
 ALS Vial : 5 Sample Multiplier: 1

Instrument :
 MSVOA_X
 ClientSampleId :
 TB

Quant Time: Dec 11 01:28:12 2024
 Quant Method : Z:\voasrv\HPCHEM1\MSVOA_X\Method\82X112124W.M
 Quant Title : SW846 8260
 QLast Update : Fri Nov 22 03:45:52 2024
 Response via : Initial Calibration

Compound	R.T.	QIon	Response	Conc	Units	Dev(Min)

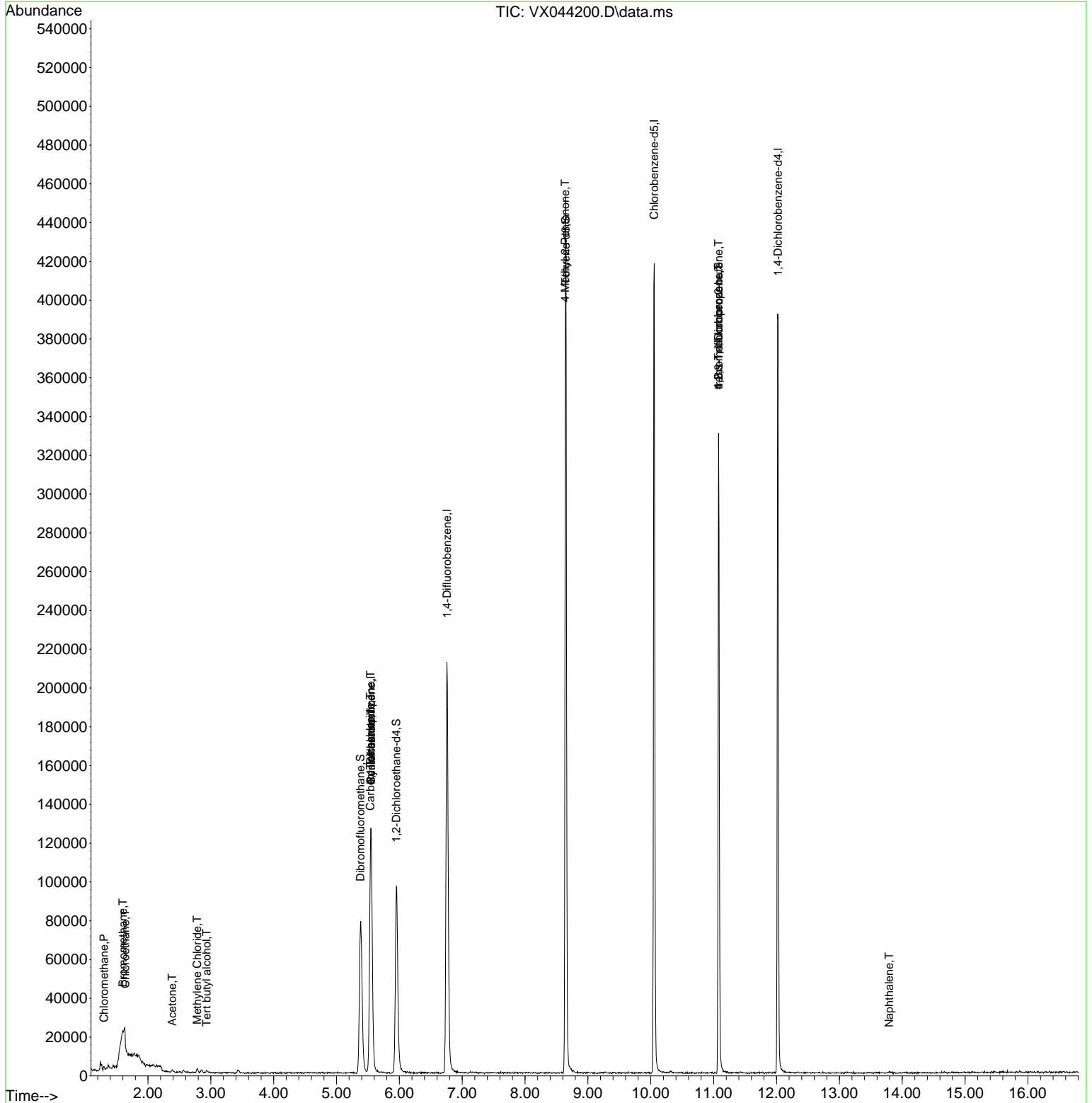
Internal Standards						
1) Pentafluorobenzene	5.550	168	112437	50.000	ug/l	0.01
34) 1,4-Difluorobenzene	6.757	114	211530	50.000	ug/l	0.00
63) Chlorobenzene-d5	10.055	117	185283	50.000	ug/l	0.00
72) 1,4-Dichlorobenzene-d4	12.024	152	76755	50.000	ug/l	0.00
System Monitoring Compounds						
33) 1,2-Dichloroethane-d4	5.952	65	95552	49.548	ug/l	0.00
Spiked Amount	50.000	Range	74 - 125	Recovery	=	99.100%
35) Dibromofluoromethane	5.379	113	68775	45.501	ug/l	0.00
Spiked Amount	50.000	Range	75 - 124	Recovery	=	91.000%
50) Toluene-d8	8.647	98	255312	49.002	ug/l	0.00
Spiked Amount	50.000	Range	86 - 113	Recovery	=	98.000%
62) 4-Bromofluorobenzene	11.079	95	85535	48.238	ug/l	0.00
Spiked Amount	50.000	Range	77 - 121	Recovery	=	96.480%
Target Compounds						
					Qvalue	
3) Chloromethane	1.300	50	1780	1.188	ug/l #	78
5) Bromomethane	1.599	94	501	0.511	ug/l #	76
6) Chloroethane	1.636	64	535	0.551	ug/l #	71
11) Tert butyl alcohol	2.934	59	679	2.194	ug/l #	73
16) Acetone	2.386	43	1228	1.386	ug/l	94
20) Methylene Chloride	2.782	84	872	0.580	ug/l #	47
31) Cyclohexane	5.550	56	3306	1.538	ug/l #	38
36) 1,1-Dichloropropene	5.544	75	9869	5.240	ug/l #	50
38) Carbon Tetrachloride	5.538	117	13122	6.200	ug/l #	15
51) 4-Methyl-2-Pentanone	8.641	43	1412	0.622	ug/l #	1
76) 1,2,3-Trichloropropane	11.079	75	49592	29.462	ug/l #	34
81) trans-1,4-Dichloro-2-b...	11.079	75	49592	80.396	ug/l #	6
95) Naphthalene	13.792	128	1149	0.209	ug/l #	70

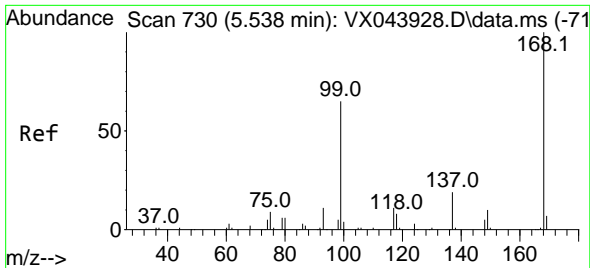
(#) = qualifier out of range (m) = manual integration (+) = signals summed

Data Path : Z:\voasrv\HPCHEM1\MSVOA_X\Data\VX121024\
 Data File : VX044200.D
 Acq On : 10 Dec 2024 11:59
 Operator : JC/MD
 Sample : P5164-05RE
 Misc : 5.0mL/MSVOA_X/WATER
 ALS Vial : 5 Sample Multiplier: 1

Instrument :
 MSVOA_X
 ClientSampleId :
 TB

Quant Time: Dec 11 01:28:12 2024
 Quant Method : Z:\voasrv\HPCHEM1\MSVOA_X\Method\82X112124W.M
 Quant Title : SW846 8260
 QLast Update : Fri Nov 22 03:45:52 2024
 Response via : Initial Calibration

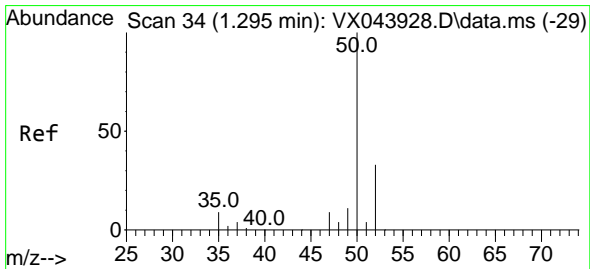
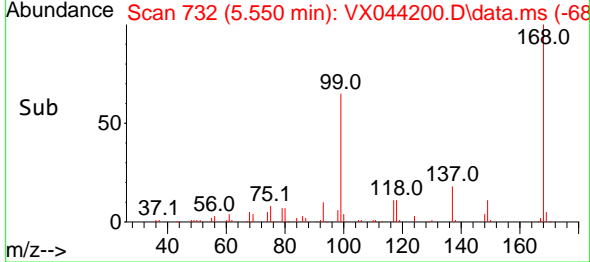
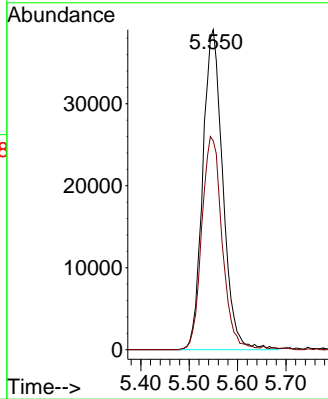
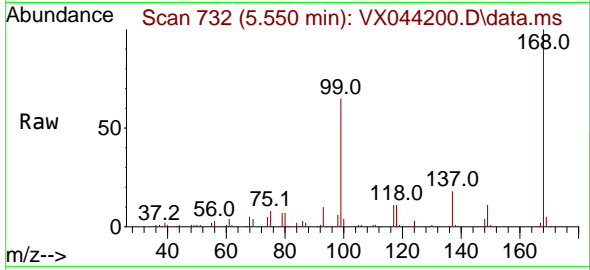




#1
 Pentafluorobenzene
 Concen: 50.000 ug/l
 RT: 5.550 min Scan# 71
 Delta R.T. 0.012 min
 Lab File: VX044200.D
 Acq: 10 Dec 2024 11:59

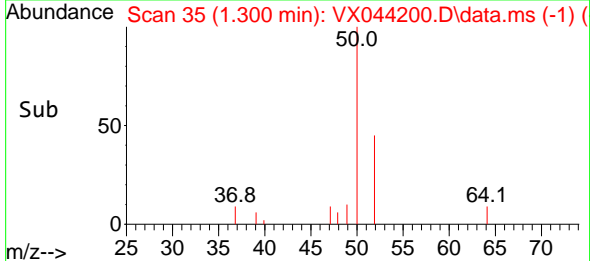
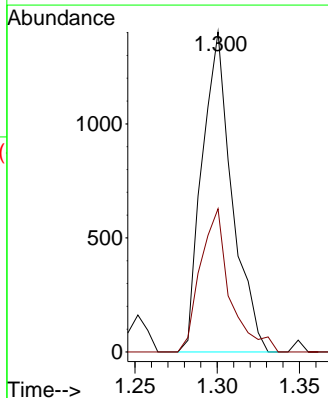
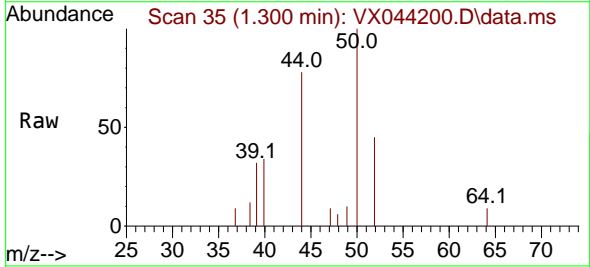
Instrument :
 MSVOA_X
 ClientSampleId :
 TB

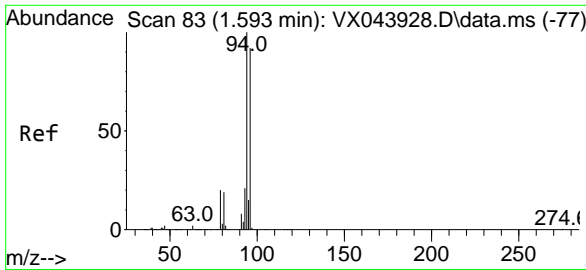
Tgt Ion:168 Resp: 112437
 Ion Ratio Lower Upper
 168 100
 99 65.3 51.8 77.8



#3
 Chloromethane
 Concen: 1.188 ug/l
 RT: 1.300 min Scan# 35
 Delta R.T. 0.006 min
 Lab File: VX044200.D
 Acq: 10 Dec 2024 11:59

Tgt Ion: 50 Resp: 1780
 Ion Ratio Lower Upper
 50 100
 52 44.8 26.1 39.1#

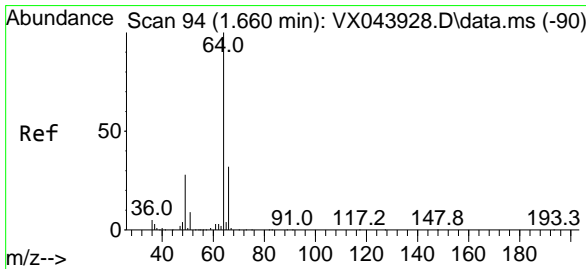
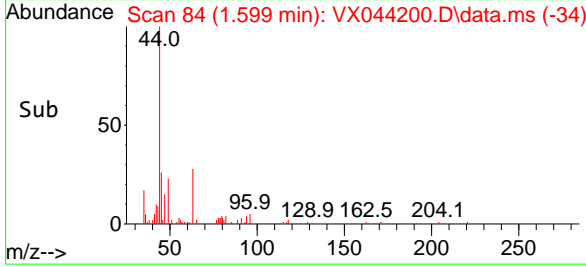
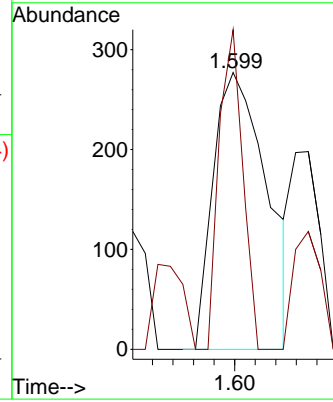
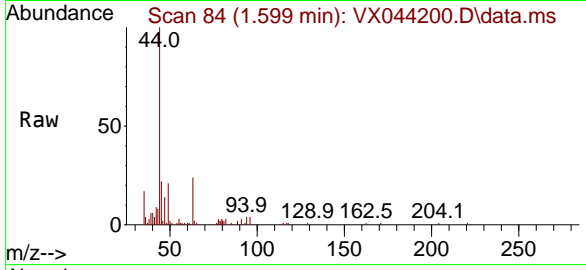




#5
 Bromomethane
 Concen: 0.511 ug/l
 RT: 1.599 min Scan# 84
 Delta R.T. 0.006 min
 Lab File: VX044200.D
 Acq: 10 Dec 2024 11:59

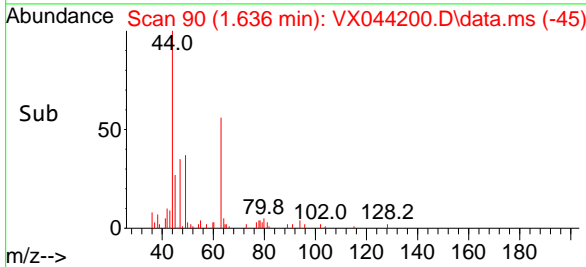
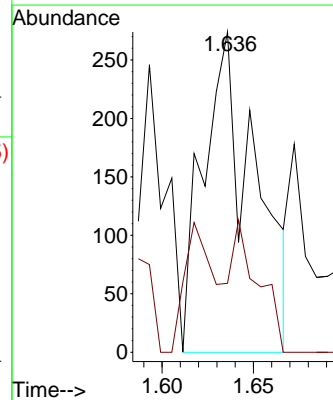
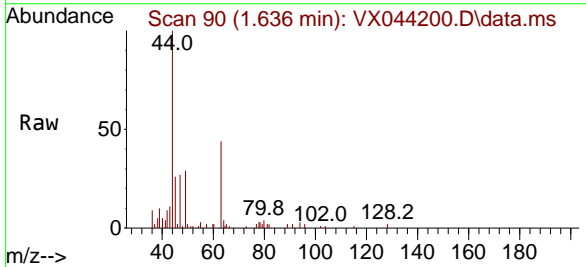
Instrument :
 MSVOA_X
 ClientSampleId :
 TB

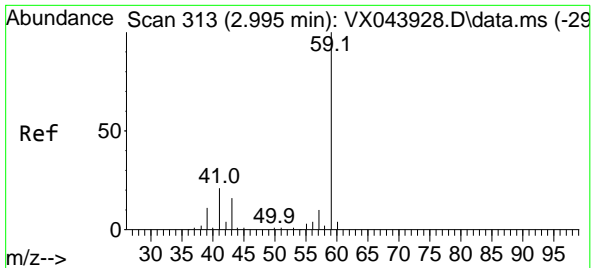
Tgt Ion: 94 Resp: 501
 Ion Ratio Lower Upper
 94 100
 96 115.5 73.9 110.9#



#6
 Chloroethane
 Concen: 0.551 ug/l
 RT: 1.636 min Scan# 90
 Delta R.T. -0.025 min
 Lab File: VX044200.D
 Acq: 10 Dec 2024 11:59

Tgt Ion: 64 Resp: 535
 Ion Ratio Lower Upper
 64 100
 66 16.1 25.9 38.9#

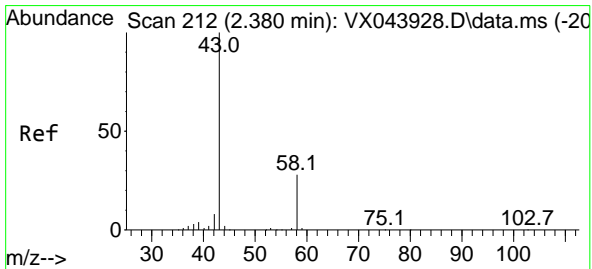
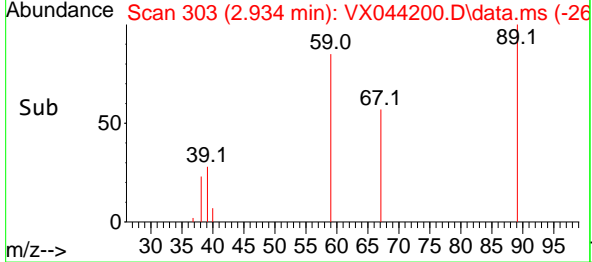
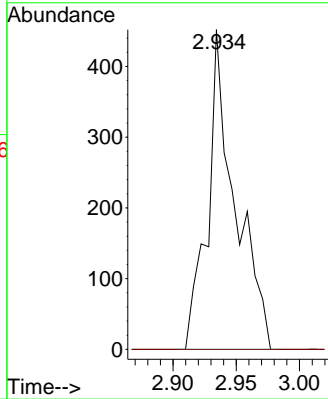
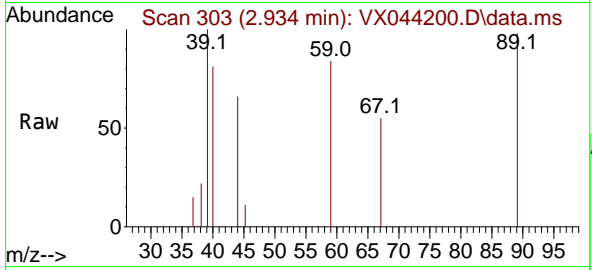




#11
 Tert butyl alcohol
 Concen: 2.194 ug/l
 RT: 2.934 min Scan# 30
 Delta R.T. -0.061 min
 Lab File: VX044200.D
 Acq: 10 Dec 2024 11:59

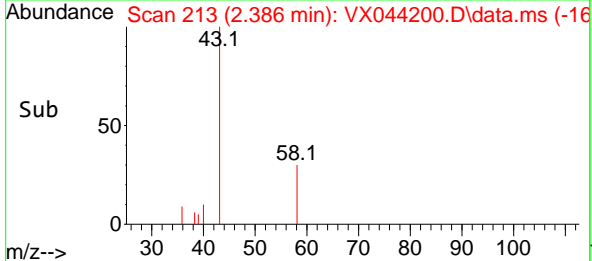
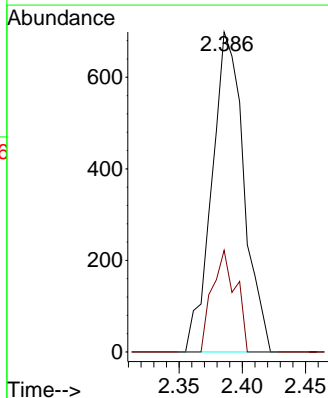
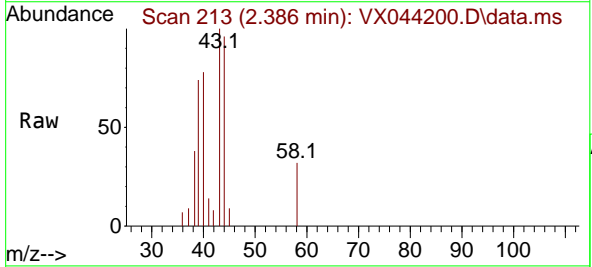
Instrument : MSVOA_X
 ClientSampleId : TB

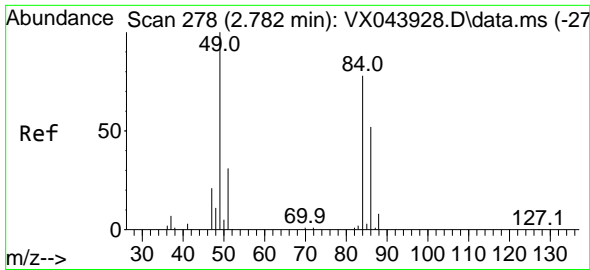
Tgt Ion: 59 Resp: 679
 Ion Ratio Lower Upper
 59 100
 57 0.0 7.9 11.9#



#16
 Acetone
 Concen: 1.386 ug/l
 RT: 2.386 min Scan# 213
 Delta R.T. 0.006 min
 Lab File: VX044200.D
 Acq: 10 Dec 2024 11:59

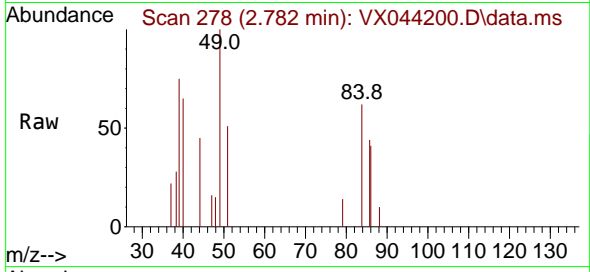
Tgt Ion: 43 Resp: 1228
 Ion Ratio Lower Upper
 43 100
 58 31.8 22.7 34.1





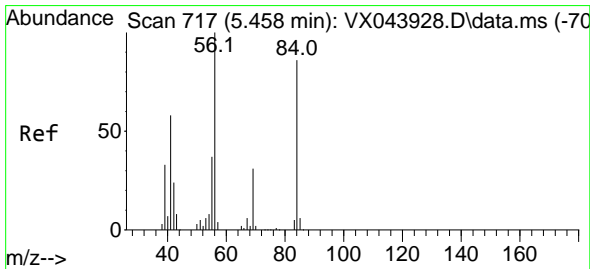
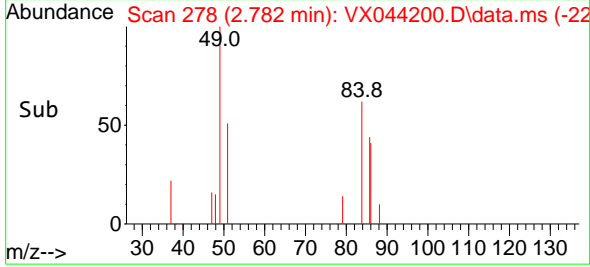
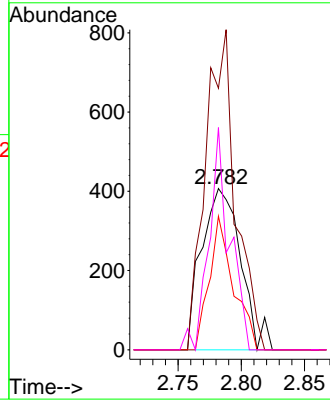
#20
 Methylene Chloride
 Concen: 0.580 ug/l
 RT: 2.782 min Scan# 21
 Delta R.T. -0.000 min
 Lab File: VX044200.D
 Acq: 10 Dec 2024 11:59

Instrument :
 MSVOA_X
 ClientSampleId :
 TB



Tgt Ion: 84 Resp: 872

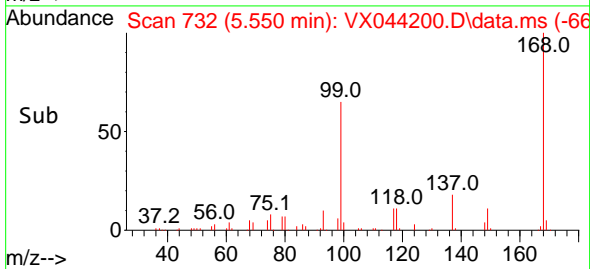
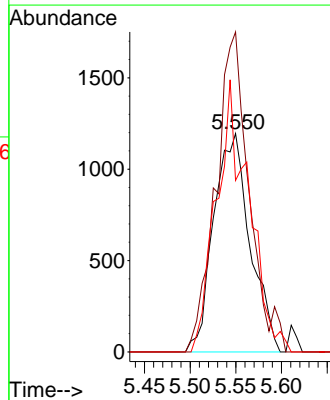
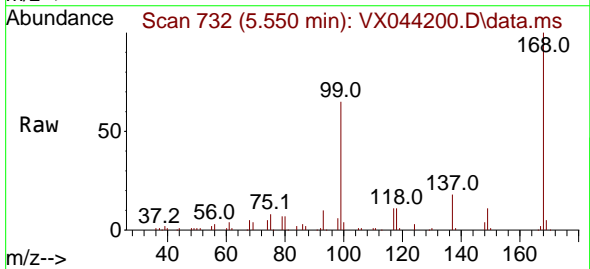
Ion	Ratio	Lower	Upper
84	100		
49	162.2	102.7	154.1#
51	82.8	31.7	47.5#
86	137.8	53.9	80.9#

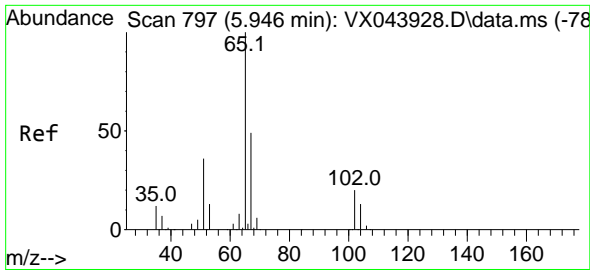


#31
 Cyclohexane
 Concen: 1.538 ug/l
 RT: 5.550 min Scan# 732
 Delta R.T. 0.091 min
 Lab File: VX044200.D
 Acq: 10 Dec 2024 11:59

Tgt Ion: 56 Resp: 3306

Ion	Ratio	Lower	Upper
56	100		
69	146.5	24.7	37.1#
84	78.5	68.7	103.1

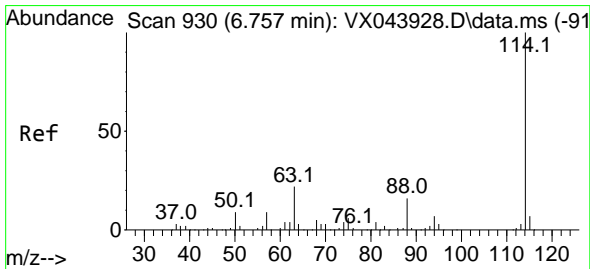
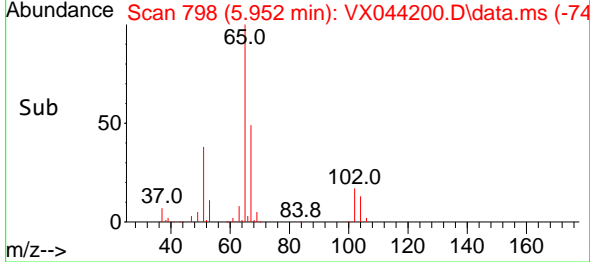
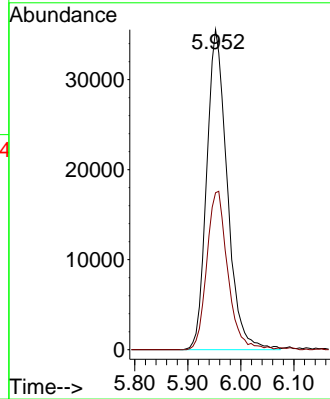
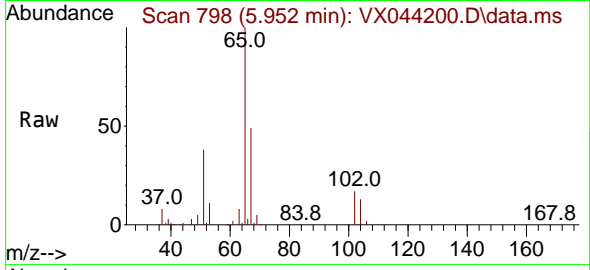




#33
 1,2-Dichloroethane-d4
 Concen: 49.548 ug/l
 RT: 5.952 min Scan# 798
 Delta R.T. 0.006 min
 Lab File: VX044200.D
 Acq: 10 Dec 2024 11:59

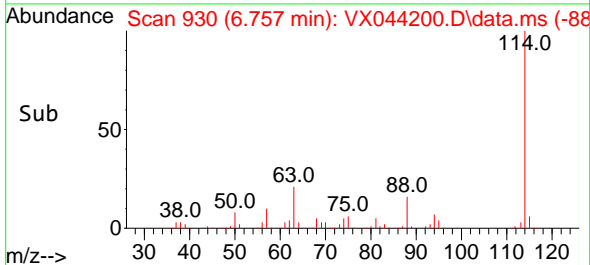
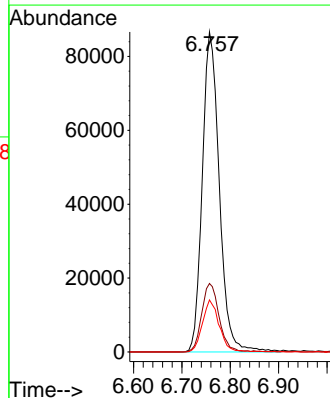
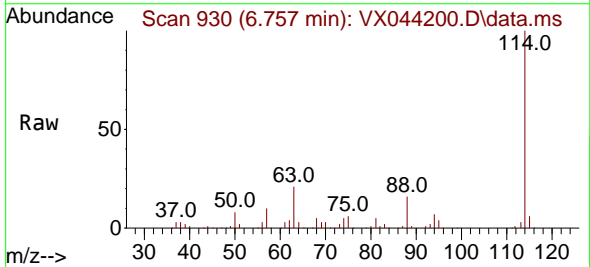
Instrument : MSVOA_X
 ClientSampleId : TB

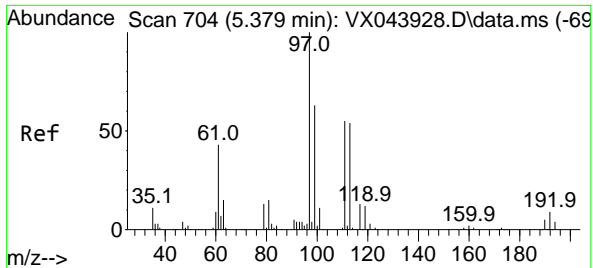
Tgt Ion: 65 Resp: 95552
 Ion Ratio Lower Upper
 65 100
 67 50.5 0.0 100.8



#34
 1,4-Difluorobenzene
 Concen: 50.000 ug/l
 RT: 6.757 min Scan# 930
 Delta R.T. -0.000 min
 Lab File: VX044200.D
 Acq: 10 Dec 2024 11:59

Tgt Ion: 114 Resp: 211530
 Ion Ratio Lower Upper
 114 100
 63 21.4 0.0 44.0
 88 16.3 0.0 32.4

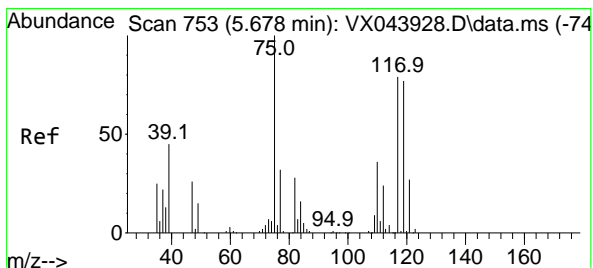
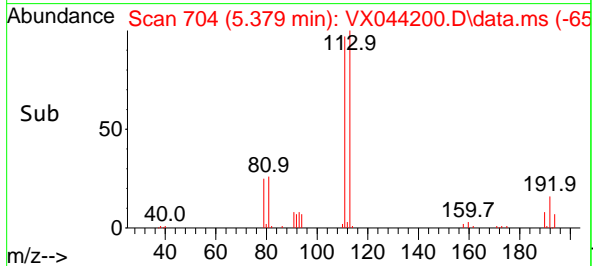
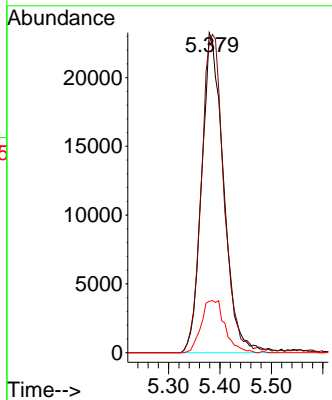
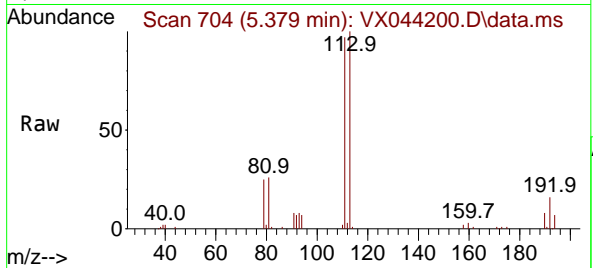




#35
 Dibromofluoromethane
 Concen: 45.501 ug/l
 RT: 5.379 min Scan# 704
 Delta R.T. -0.000 min
 Lab File: VX044200.D
 Acq: 10 Dec 2024 11:59

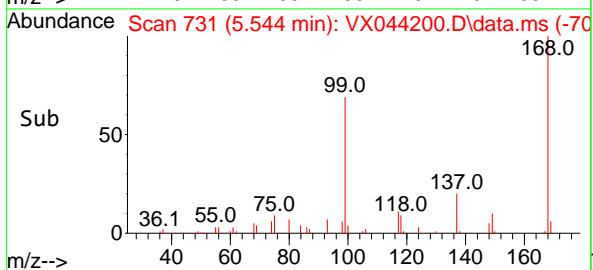
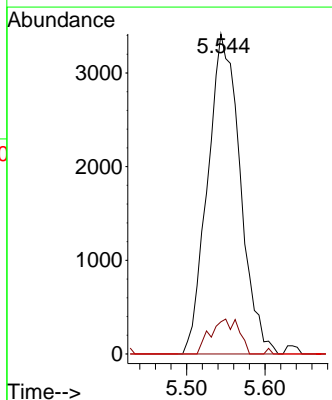
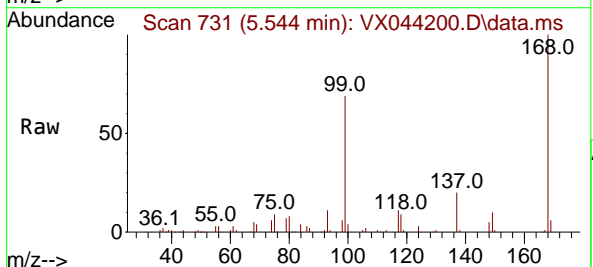
Instrument : MSVOA_X
 ClientSampleId : TB

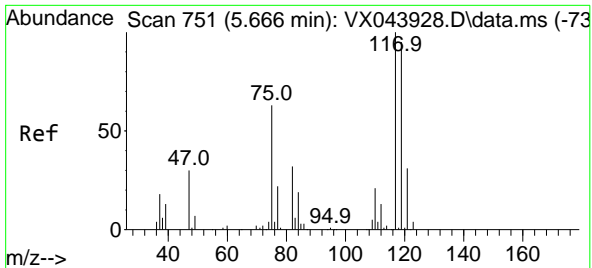
Tgt Ion	Resp	Lower	Upper
113	68775		
113	100		
111	102.5	81.0	121.4
192	17.6	13.0	19.6



#36
 1,1-Dichloropropene
 Concen: 5.240 ug/l
 RT: 5.544 min Scan# 731
 Delta R.T. -0.134 min
 Lab File: VX044200.D
 Acq: 10 Dec 2024 11:59

Tgt Ion	Resp	Lower	Upper
75	9869		
75	100		
110	9.5	17.4	52.2#
77	0.0	25.8	38.8#

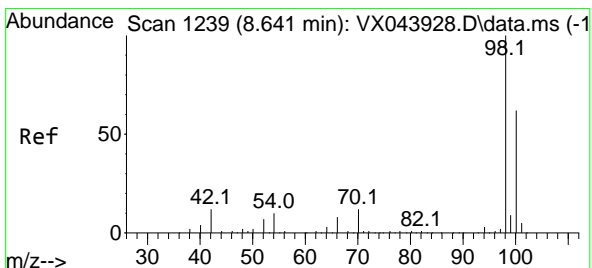
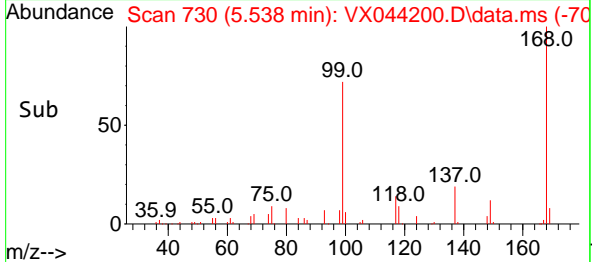
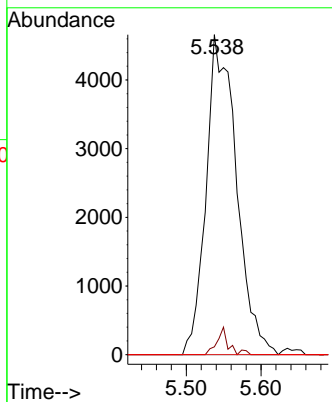
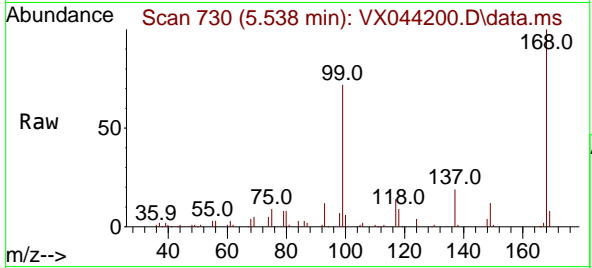




#38
 Carbon Tetrachloride
 Concen: 6.200 ug/l
 RT: 5.538 min Scan# 71
 Delta R.T. -0.128 min
 Lab File: VX044200.D
 Acq: 10 Dec 2024 11:59

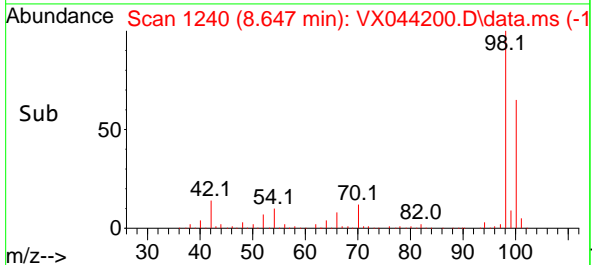
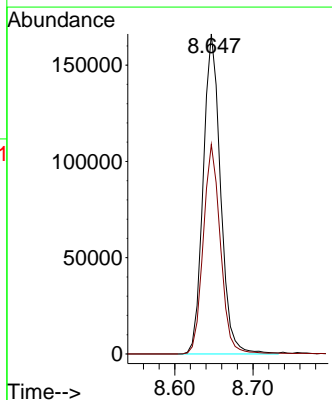
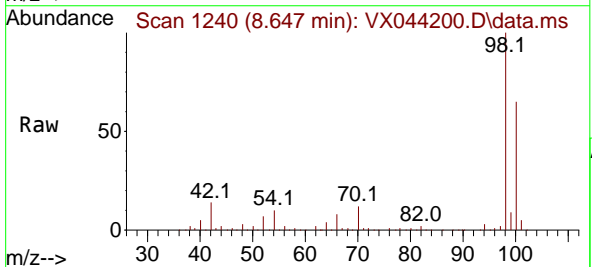
Instrument :
 MSVOA_X
 ClientSampleId :
 TB

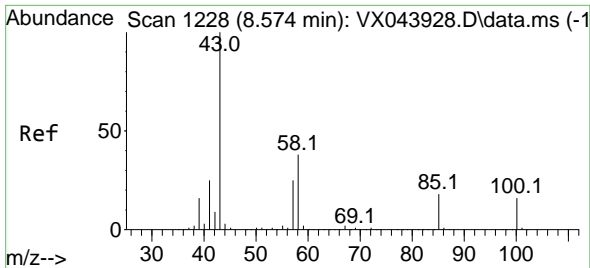
Tgt Ion	Resp	Lower	Upper
117	13122		
119	2.4	75.2	112.8#
121	0.0	24.5	36.7#



#50
 Toluene-d8
 Concen: 49.002 ug/l
 RT: 8.647 min Scan# 1240
 Delta R.T. 0.006 min
 Lab File: VX044200.D
 Acq: 10 Dec 2024 11:59

Tgt Ion	Resp	Lower	Upper
98	255312		
100	64.9	52.6	79.0

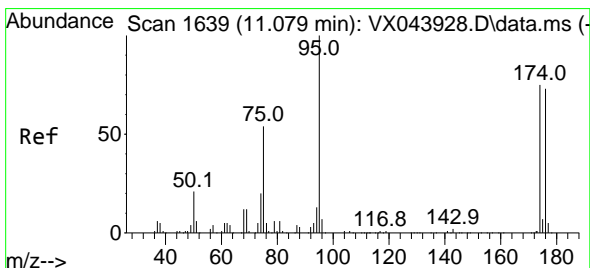
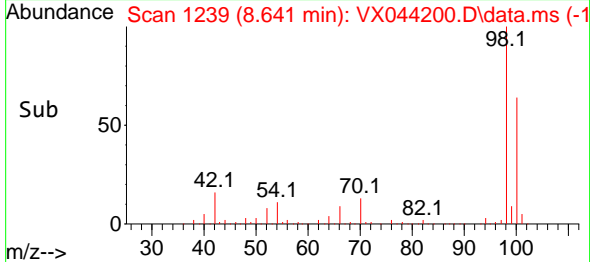
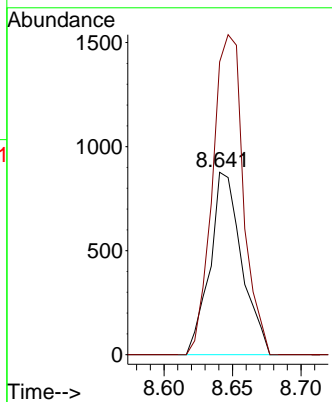
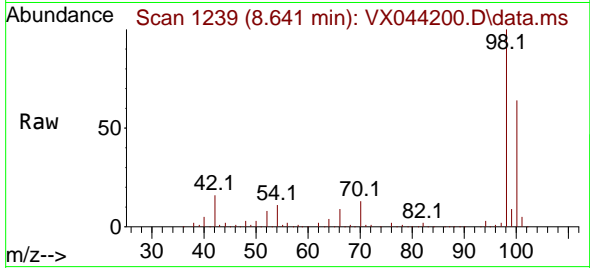




#51
 4-Methyl-2-Pentanone
 Concen: 0.622 ug/l
 RT: 8.641 min Scan# 1239
 Delta R.T. 0.067 min
 Lab File: VX044200.D
 Acq: 10 Dec 2024 11:59

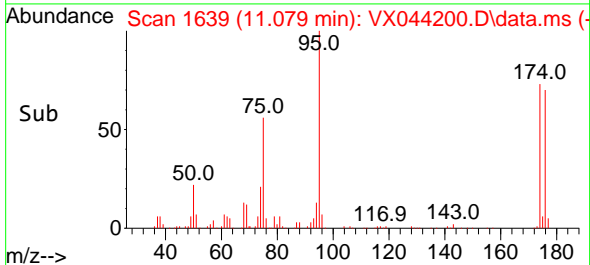
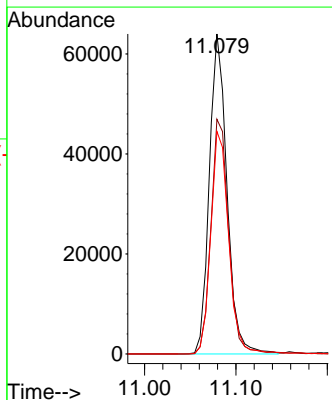
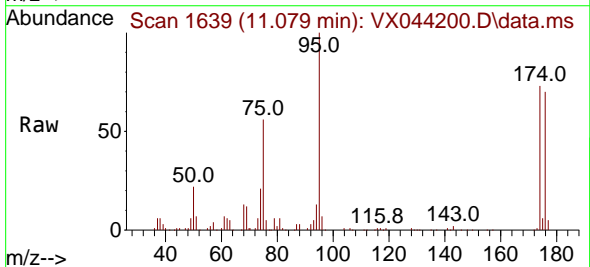
Instrument : MSVOA_X
 ClientSampleId : TB

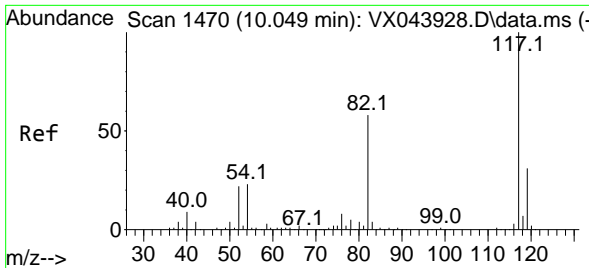
Tgt Ion: 43 Resp: 1412
 Ion Ratio Lower Upper
 43 100
 58 171.3 30.0 45.0#



#62
 4-Bromofluorobenzene
 Concen: 48.238 ug/l
 RT: 11.079 min Scan# 1639
 Delta R.T. -0.000 min
 Lab File: VX044200.D
 Acq: 10 Dec 2024 11:59

Tgt Ion: 95 Resp: 85535
 Ion Ratio Lower Upper
 95 100
 174 74.3 0.0 150.4
 176 71.1 0.0 146.0



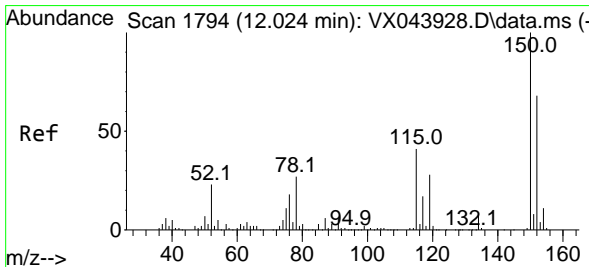
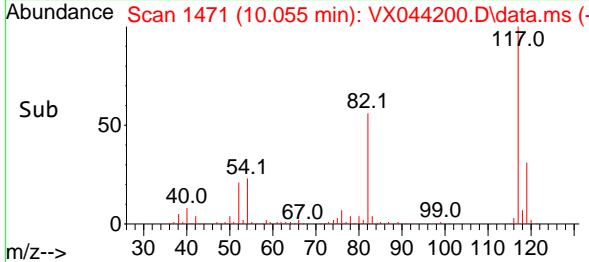
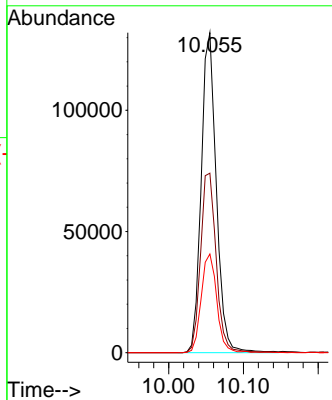
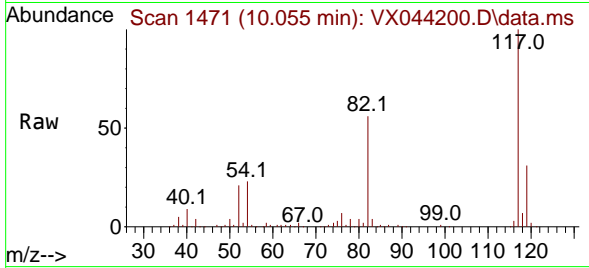


#63
 Chlorobenzene-d5
 Concen: 50.000 ug/l
 RT: 10.055 min Scan# 1471
 Delta R.T. 0.006 min
 Lab File: VX044200.D
 Acq: 10 Dec 2024 11:59

Instrument : MSVOA_X
 ClientSampleId : TB

Tgt Ion:117 Resp: 185283

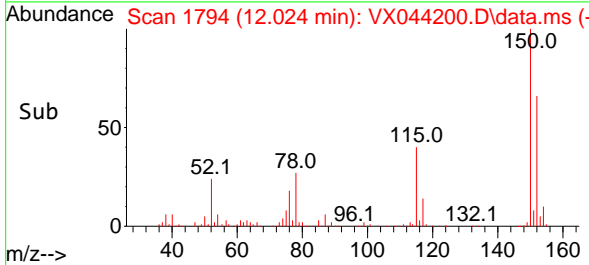
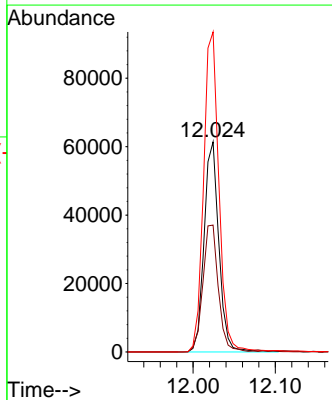
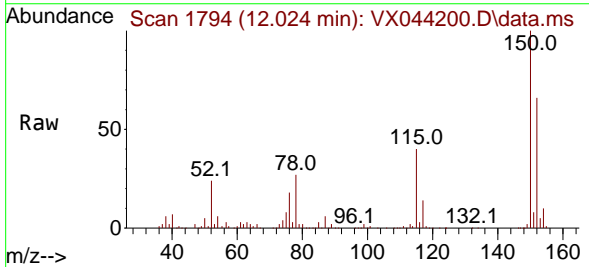
Ion	Ratio	Lower	Upper
117	100		
82	56.1	46.4	69.6
119	30.8	24.6	37.0

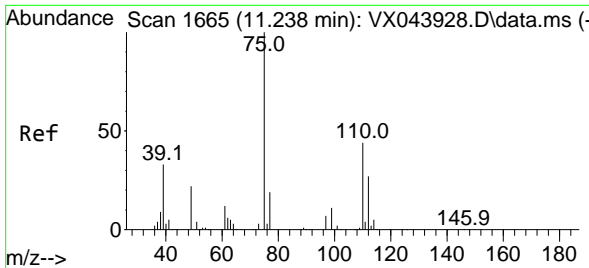


#72
 1,4-Dichlorobenzene-d4
 Concen: 50.000 ug/l
 RT: 12.024 min Scan# 1794
 Delta R.T. -0.000 min
 Lab File: VX044200.D
 Acq: 10 Dec 2024 11:59

Tgt Ion:152 Resp: 76755

Ion	Ratio	Lower	Upper
152	100		
115	63.4	45.4	136.2
150	158.9	0.0	353.0

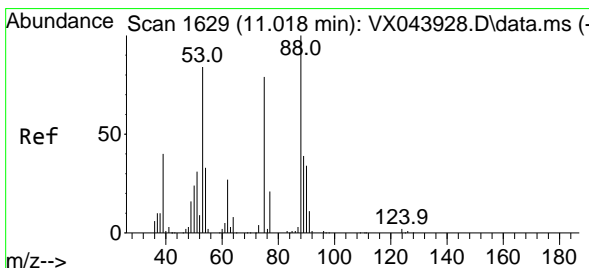
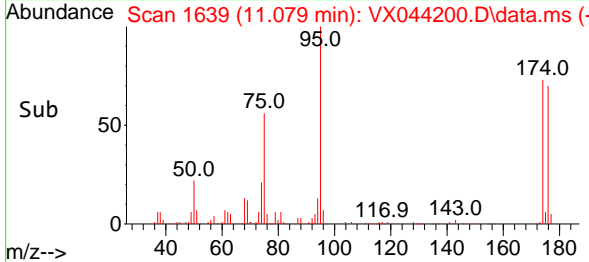
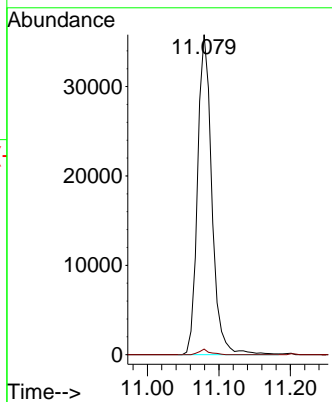
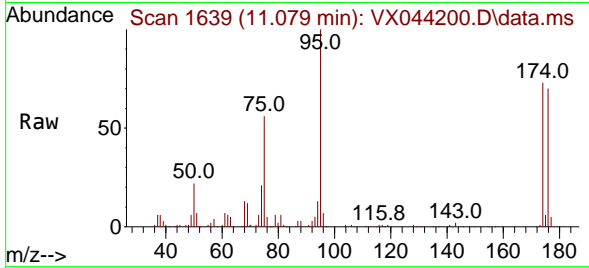




#76
 1,2,3-Trichloropropane
 Concen: 29.462 ug/l
 RT: 11.079 min Scan# 1639
 Delta R.T. -0.159 min
 Lab File: VX044200.D
 Acq: 10 Dec 2024 11:59

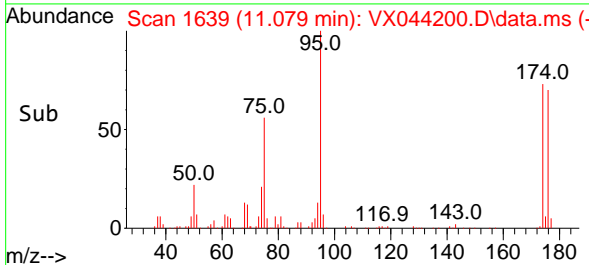
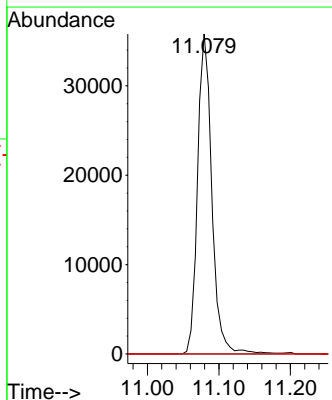
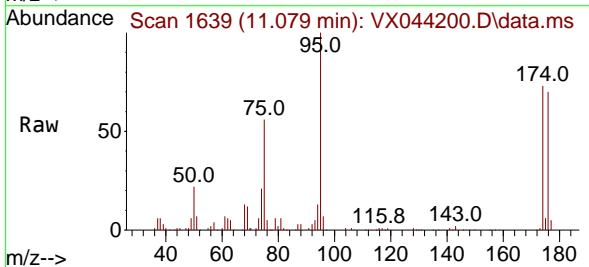
Instrument : MSVOA_X
 ClientSampleId : TB

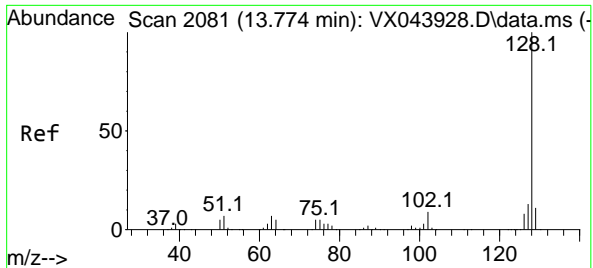
Tgt Ion: 75 Resp: 49592
 Ion Ratio Lower Upper
 75 100
 77 1.3 21.8 65.3#



#81
 trans-1,4-Dichloro-2-butene
 Concen: 80.396 ug/l
 RT: 11.079 min Scan# 1639
 Delta R.T. 0.061 min
 Lab File: VX044200.D
 Acq: 10 Dec 2024 11:59

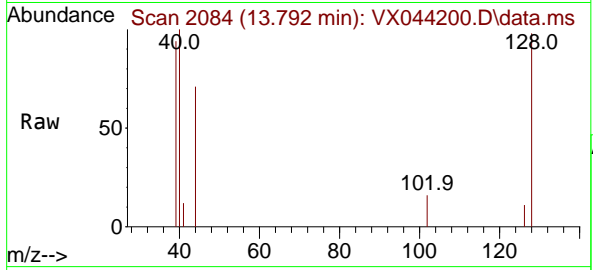
Tgt Ion: 75 Resp: 49592
 Ion Ratio Lower Upper
 75 100
 53 0.0 86.7 130.1#
 89 0.0 38.2 57.2#





#95
 Naphthalene
 Concen: 0.209 ug/l
 RT: 13.792 min Scan# 20
 Delta R.T. 0.018 min
 Lab File: VX044200.D
 Acq: 10 Dec 2024 11:59

Instrument : MSVOA_X
 ClientSampleId : TB



Tgt Ion:128 Resp: 1149

Ion	Ratio	Lower	Upper
128	100		
127	0.0	10.2	15.2#
129	0.0	8.6	12.8#

