

Data File : VX013940.D
 Acq On : 11 Dec 2019 13:34
 Operator : JC/SP
 Sample : K6185-04DL 10X
 Misc : 5.0mL/MSVOA_X/WATER
 ALS Vial : 10 Sample Multiplier: 1

Instrument :
 MSVOA_X
 ClientSampleId :
 RE134D3-20191204DL

Quant Time: Dec 12 03:59:20 2019
 Quant Method : Z:\VOASRV\HPCHEM1\MSVOA_X\METHOD\82X112619W.M
 Quant Title : SW846 8260
 QLast Update : Tue Nov 26 15:53:00 2019
 Response via : Initial Calibration

Internal Standards	R.T.	QIon	Response	Conc	Units	Dev(Min)
1) Pentafluorobenzene	5.65	168	588046	50.00	ug/l	0.00
34) 1,4-Difluorobenzene	6.85	114	902098	50.00	ug/l	0.00
63) Chlorobenzene-d5	10.11	117	809046	50.00	ug/l	0.00
72) 1,4-Dichlorobenzene-d4	12.07	152	350115	50.00	ug/l	0.00

System Monitoring Compounds

33) 1,2-Dichloroethane-d4	6.05	65	334125	48.95	ug/l	0.00
Spiked Amount	50.000		Recovery	=	97.90%	
35) Dibromofluoromethane	5.49	113	267425	47.95	ug/l	0.00
Spiked Amount	50.000		Recovery	=	95.90%	
50) Toluene-d8	8.71	98	1072935	49.38	ug/l	0.00
Spiked Amount	50.000		Recovery	=	98.76%	
62) 4-Bromofluorobenzene	11.14	95	358282	45.73	ug/l	0.00
Spiked Amount	50.000		Recovery	=	91.46%	

Target Compounds

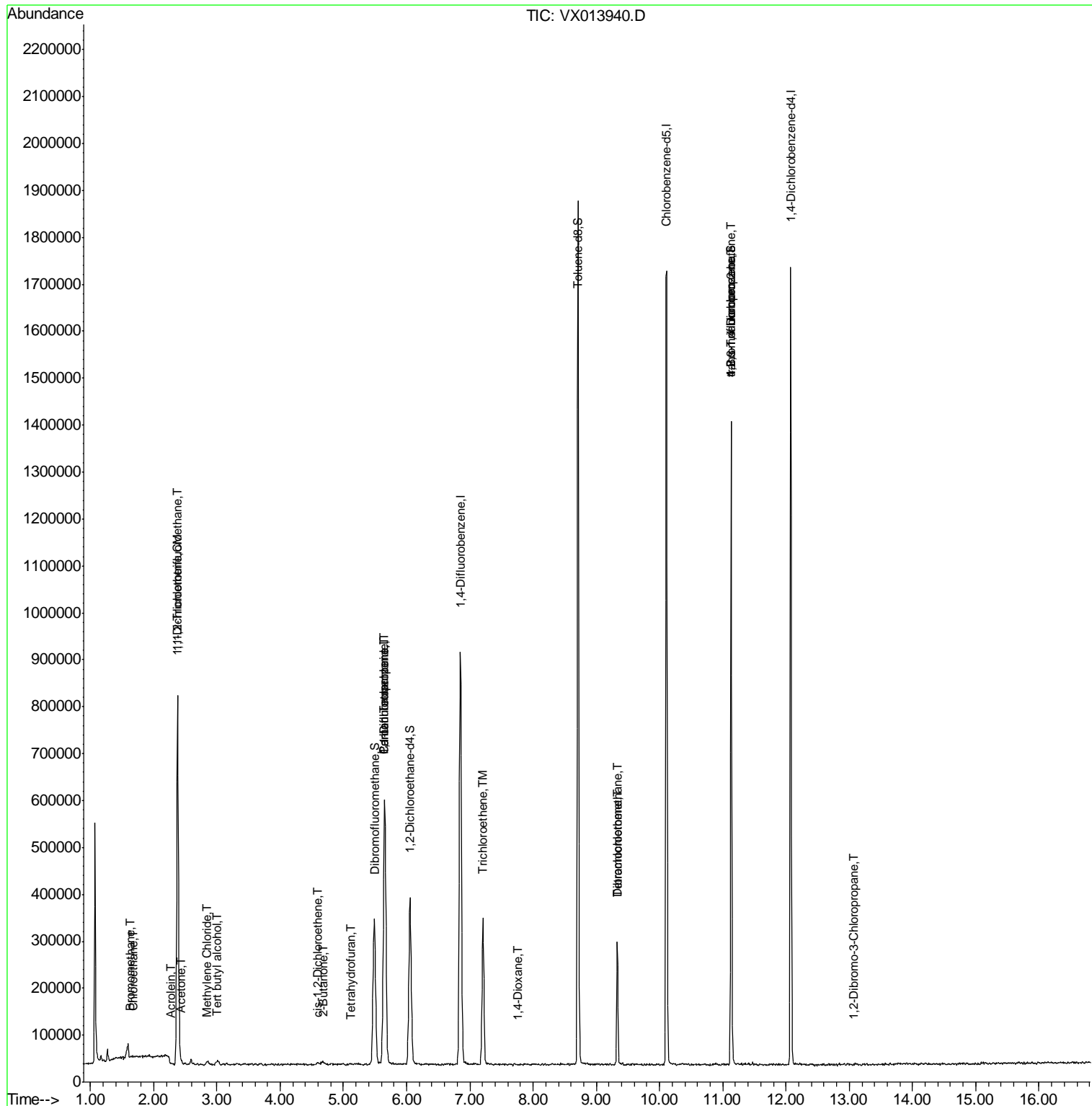
	R.T.	QIon	Response	Conc	Units	Qvalue
5) Bromomethane	1.64	94	1496	0.269	ug/l	93
6) Chloroethane	1.67	64	1652	0.351	ug/l #	53
9) 1,1,2-Trichlorotrifluoroet	2.38	101	322266	57.481	ug/l	99
11) Tert butyl alcohol	3.00	59	7160	4.250	ug/l #	91
12) 1,1-Dichloroethene	2.37	96	2103	0.376	ug/l	85
13) Acrolein	2.28	56	360	6.316	ug/l #	76
16) Acetone	2.44	43	7215	2.141	ug/l #	83
20) Methylene Chloride	2.85	84	4215	0.651	ug/l #	77
25) 2-Butanone	4.68	43	1434	0.286	ug/l #	57
27) cis-1,2-Dichloroethene	4.59	96	4018	0.574	ug/l	51
29) Tetrahydrofuran	5.12	42	716	0.232	ug/l #	59
36) 1,1-Dichloropropene	5.65	75	39860	4.868	ug/l #	52
38) Carbon Tetrachloride	5.65	117	52905	7.007	ug/l #	17
44) Trichloroethene	7.21	130	124604	18.204	ug/l	95
49) 1,4-Dioxane	7.75	88	313	1.903	ug/l #	54
60) Dibromochloromethane	9.33	129	46769	7.218	ug/l #	12
64) Tetrachloroethene	9.33	164	50798	8.419	ug/l	95
76) 1,2,3-Trichloropropane	11.13	75	175963	22.345	ug/l #	39
81) trans-1,4-Dichloro-2-buten	11.13	75	175963	61.133	ug/l #	11
92) 1,2-Dibromo-3-Chloropropan	13.06	75	422	0.228	ug/l	63

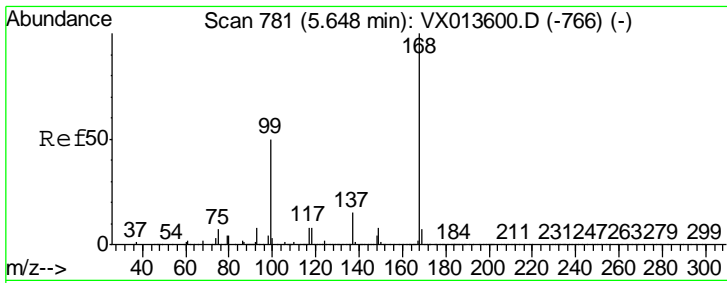
(#) = qualifier out of range (m) = manual integration (+) = signals summed

Data File : VX013940.D
Acq On : 11 Dec 2019 13:34
Operator : JC/SP
Sample : K6185-04DL 10X
Misc : 5.0mL/MSVOA_X/WATER
ALS Vial : 10 Sample Multiplier: 1

Instrument :
MSVOA_X
Client Sampled :
RE134D3-20191204DL

Quant Time: Dec 12 03:59:20 2019
Quant Method : Z:\VOASRV\HPCHEM1\MSVOA_X\METHOD\82X112619W.M
Quant Title : SW846 8260
QLast Update : Tue Nov 26 15:53:00 2019
Response via : Initial Calibration

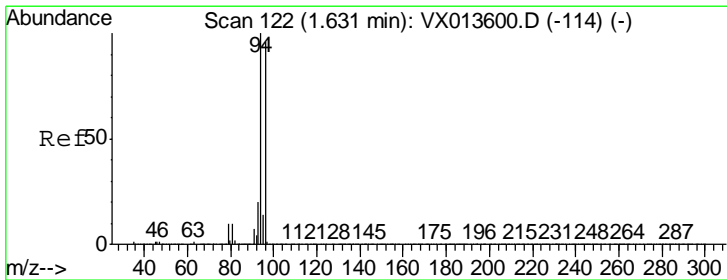
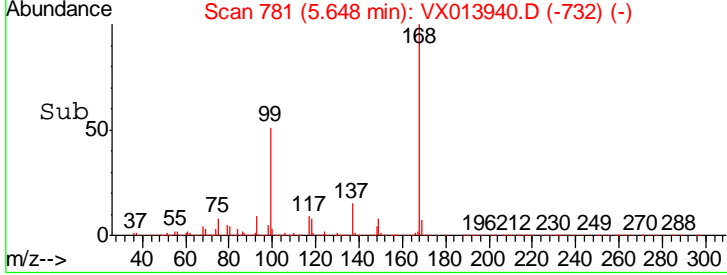
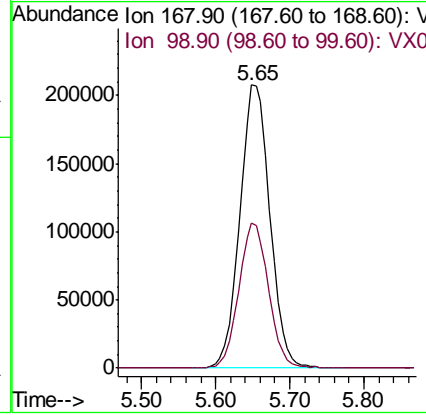
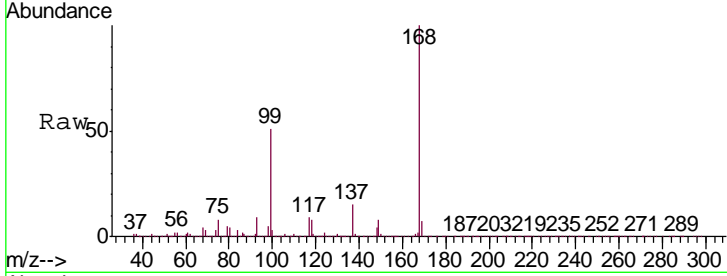




#1
 Pentafluorobenzene
 Concen: 50.000 ug/l
 RT: 5.65 min Scan# 781
 Delta R.T. -0.00 min
 Lab File: VX013940.D
 Acq: 11 Dec 2019 13:34

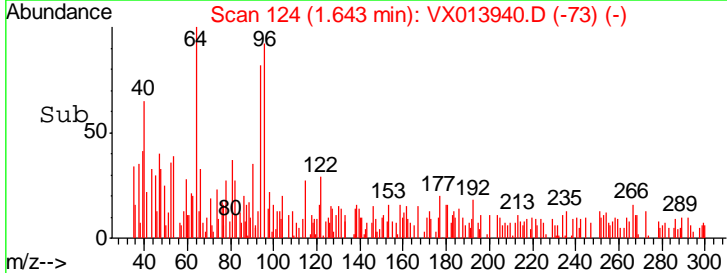
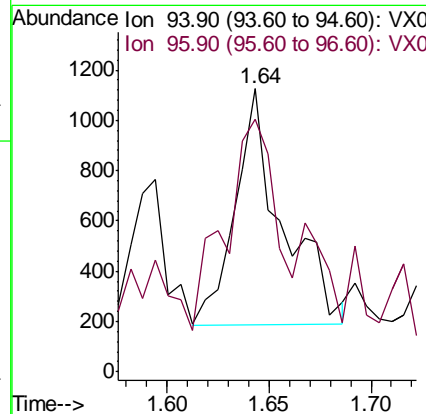
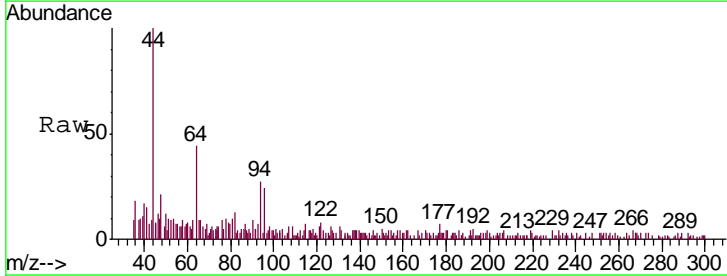
Instrument : MSVOA_X
 ClientSampleID : RE134D3-20191204DL

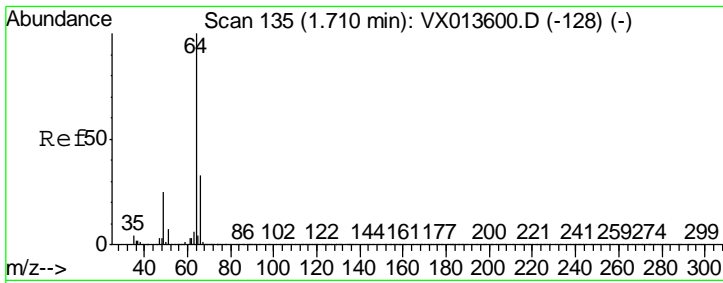
Tgt Ion	Resp	Lower	Upper
168	100		
99	51.2	39.8	59.8



#5
 Bromomethane
 Concen: 0.269 ug/l
 RT: 1.64 min Scan# 124
 Delta R.T. 0.01 min
 Lab File: VX013940.D
 Acq: 11 Dec 2019 13:34

Tgt Ion	Resp	Lower	Upper
94	100		
96	89.6	77.0	115.4

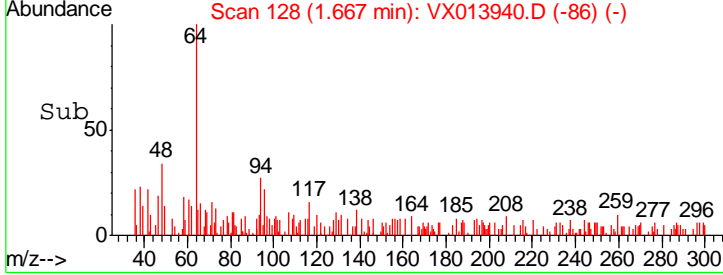
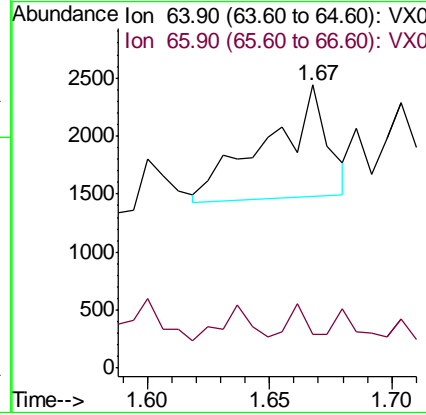
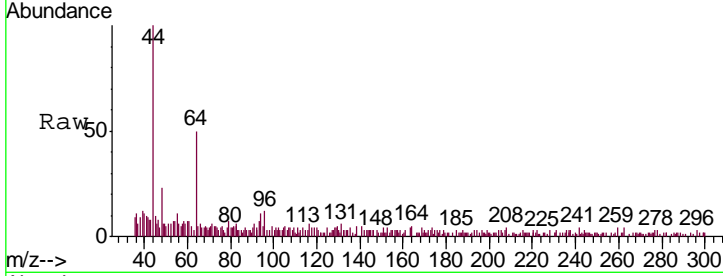




#6
 Chloroethane
 Concen: 0.351 ug/l
 RT: 1.67 min Scan# 128
 Delta R.T. -0.04 min
 Lab File: VX013940.D
 Acq: 11 Dec 2019 13:34

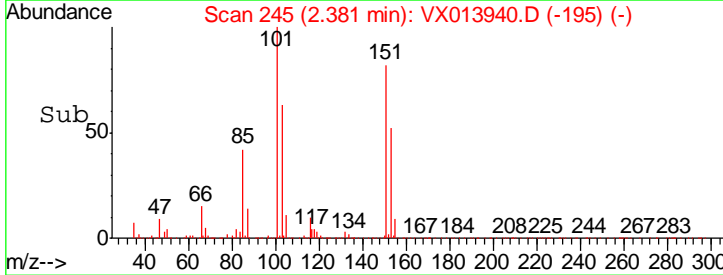
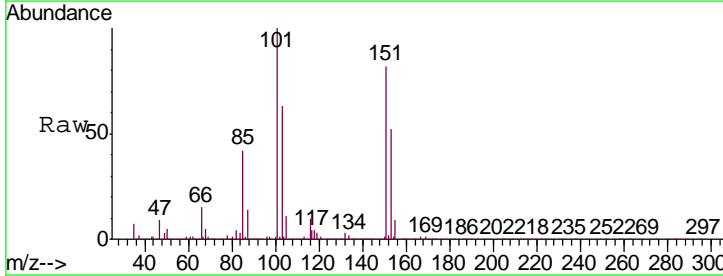
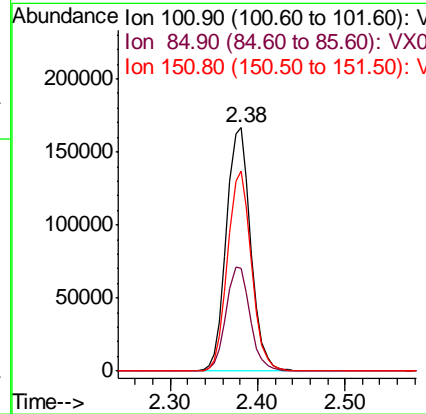
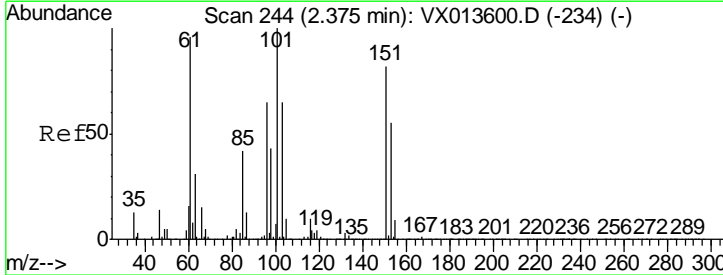
Instrument :
 MSVOA_X
ClientSampleID :
 RE134D3-20191204DL

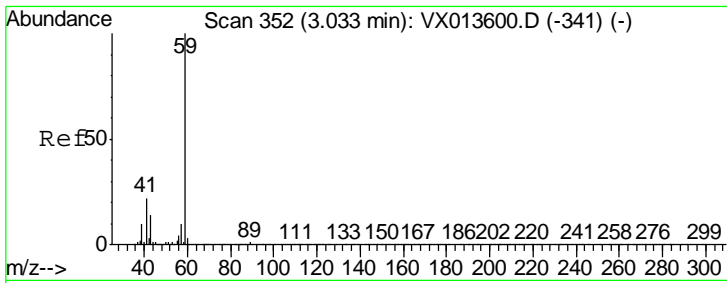
Tgt Ion: 64 Resp: 1652
 Ion Ratio Lower Upper
 64 100
 66 6.7 26.7 40.1#



#9
 1,1,2-Trichlorotrifluoroethane
 Concen: 57.481 ug/l
 RT: 2.38 min Scan# 245
 Delta R.T. 0.01 min
 Lab File: VX013940.D
 Acq: 11 Dec 2019 13:34

Tgt Ion: 101 Resp: 322266
 Ion Ratio Lower Upper
 101 100
 85 42.4 33.9 50.9
 151 80.9 64.2 96.2

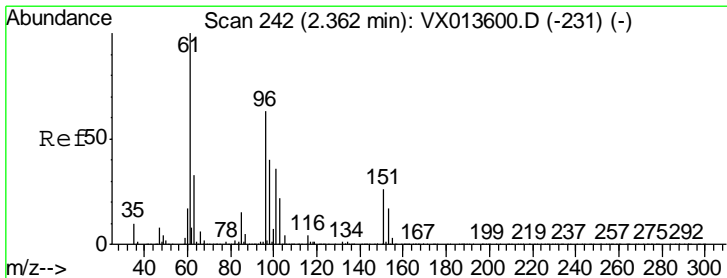
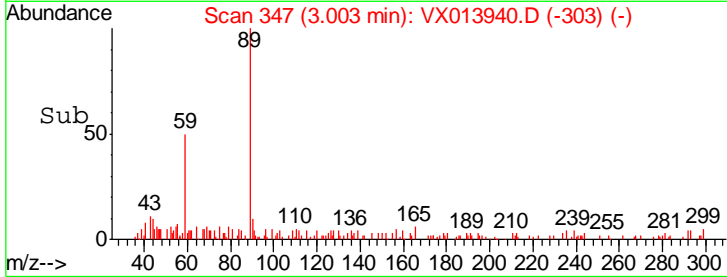
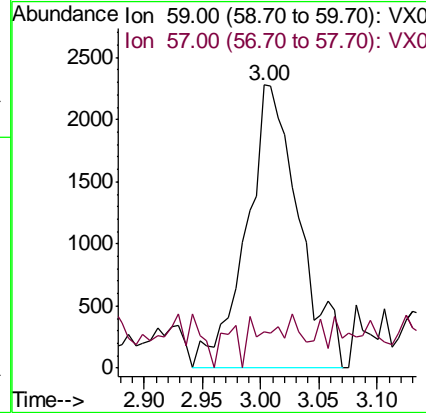
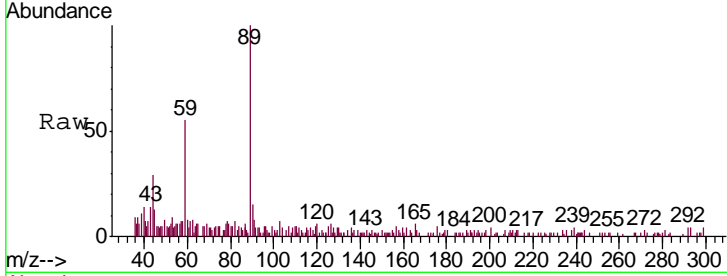




#11
 Tert butyl alcohol
 Concen: 4.250 ug/l
 RT: 3.00 min Scan# 347
 Delta R.T. -0.03 min
 Lab File: VX013940.D
 Acq: 11 Dec 2019 13:34

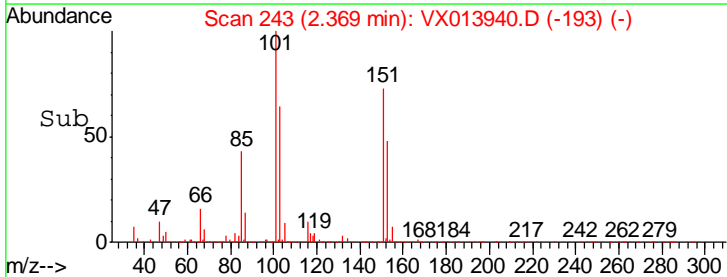
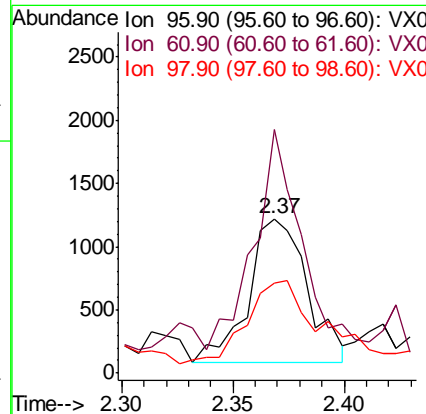
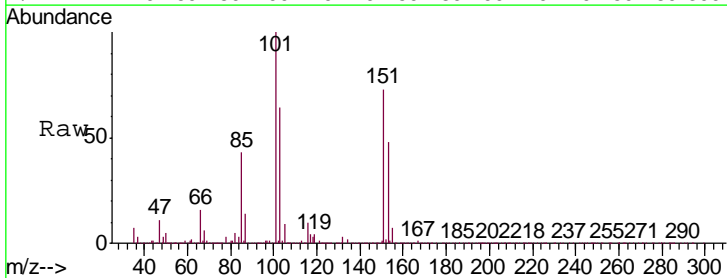
Instrument :
 MSVOA_X
 ClientSampleID :
 RE134D3-20191204DL

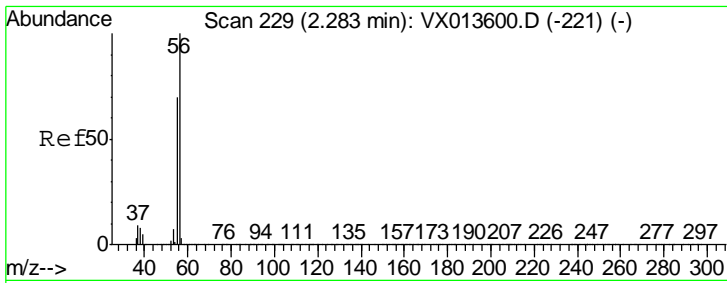
Tgt Ion: 59 Resp: 7160
 Ion Ratio Lower Upper
 59 100
 57 6.4 7.8 11.6#



#12
 1,1-Dichloroethene
 Concen: 0.376 ug/l
 RT: 2.37 min Scan# 243
 Delta R.T. 0.01 min
 Lab File: VX013940.D
 Acq: 11 Dec 2019 13:34

Tgt Ion: 96 Resp: 2103
 Ion Ratio Lower Upper
 96 100
 61 137.3 126.6 190.0
 98 53.3 50.6 76.0

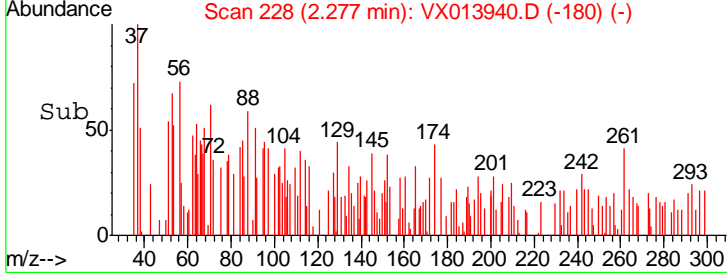
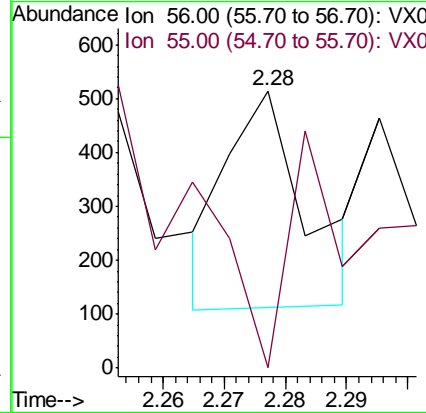
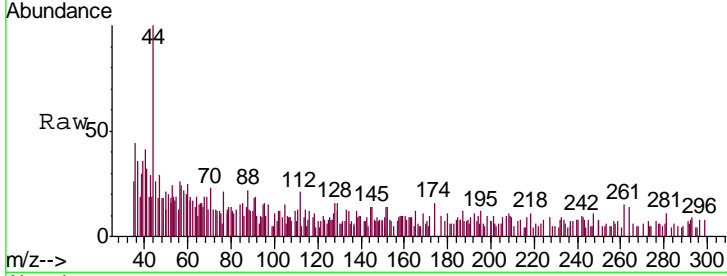




#13
 Acrolein
 Concen: 6.316 ug/l
 RT: 2.28 min Scan# 228
 Delta R.T. -0.01 min
 Lab File: VX013940.D
 Acq: 11 Dec 2019 13:34

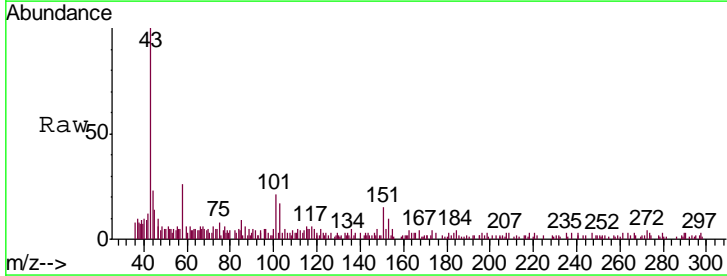
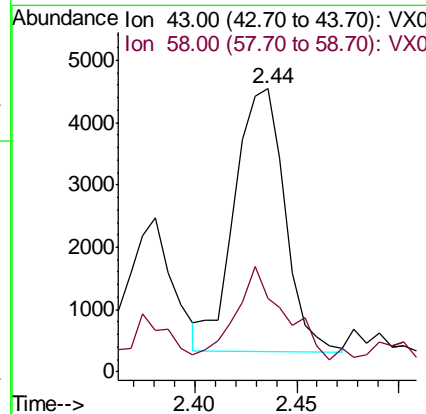
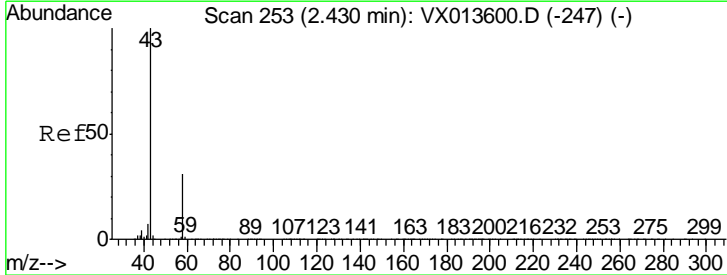
Instrument :
 MSVOA_X
 ClientSampleID :
 RE134D3-20191204DL

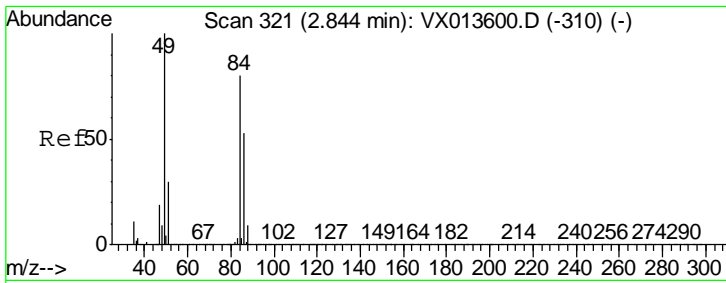
Tgt Ion: 56 Resp: 360
 Ion Ratio Lower Upper
 56 100
 55 90.3 56.2 84.4#



#16
 Acetone
 Concen: 2.141 ug/l
 RT: 2.44 min Scan# 254
 Delta R.T. 0.01 min
 Lab File: VX013940.D
 Acq: 11 Dec 2019 13:34

Tgt Ion: 43 Resp: 7215
 Ion Ratio Lower Upper
 43 100
 58 21.6 24.6 36.8#

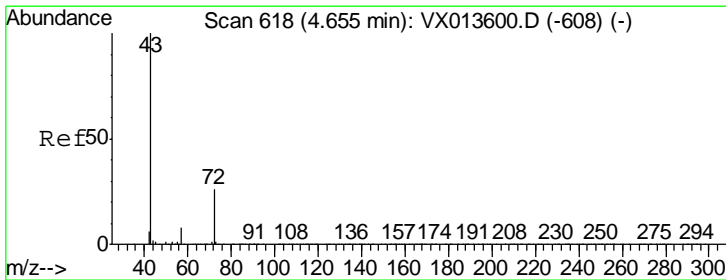
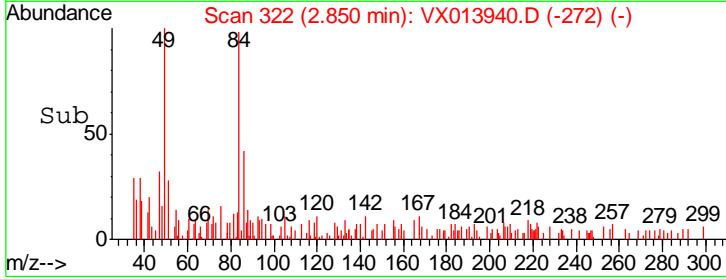
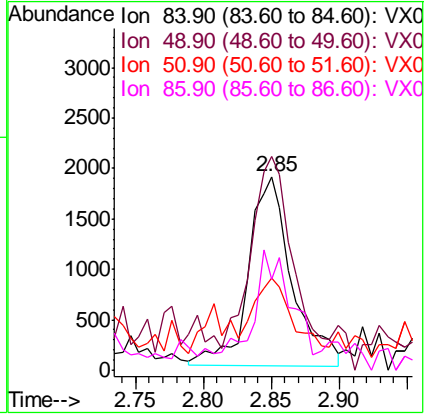
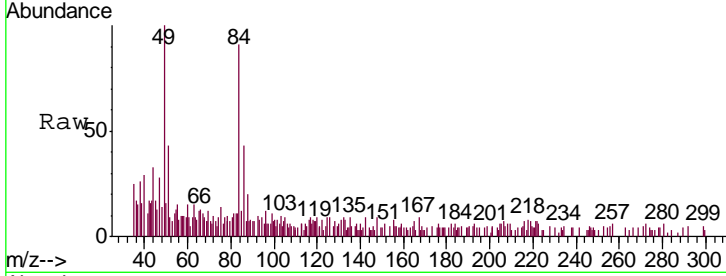




#20
 Methylene Chloride
 Concen: 0.651 ug/l
 RT: 2.85 min Scan# 322
 Delta R.T. 0.01 min
 Lab File: VX013940.D
 Acq: 11 Dec 2019 13:34

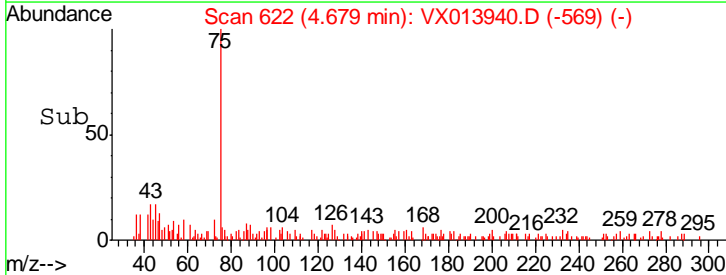
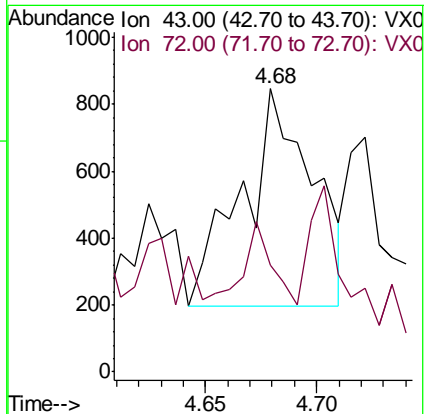
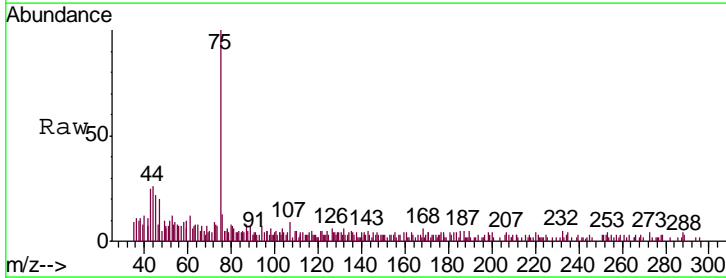
Instrument : MSVOA_X
 ClientSampleId : RE134D3-20191204DL

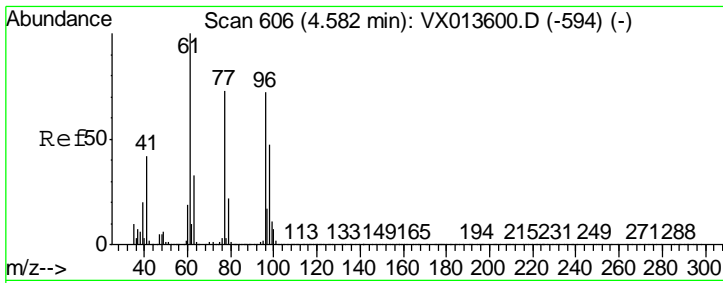
Tgt Ion	Resp	Lower	Upper
84	4215		
84	100		
49	100.9	99.7	149.5
51	43.0	29.9	44.9
86	38.6	52.2	78.4#



#25
 2-Butanone
 Concen: 0.286 ug/l
 RT: 4.68 min Scan# 622
 Delta R.T. 0.02 min
 Lab File: VX013940.D
 Acq: 11 Dec 2019 13:34

Tgt Ion	Resp	Lower	Upper
43	1434		
43	100		
72	4.2	20.6	31.0#

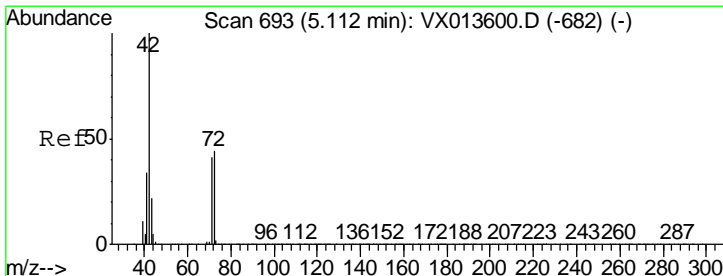
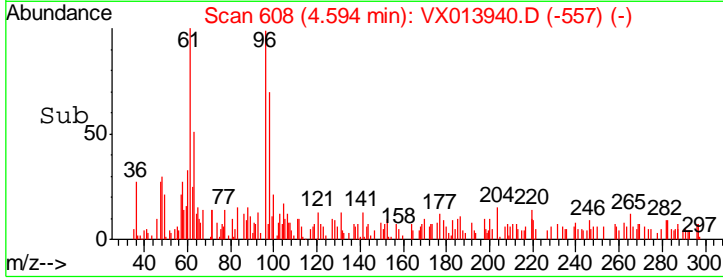
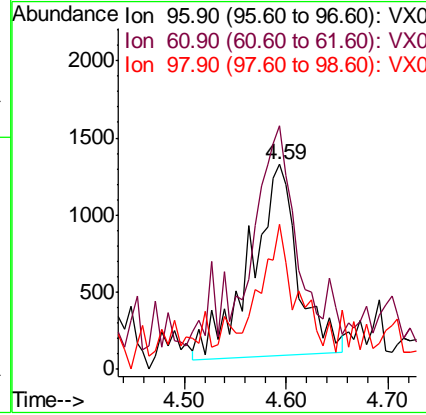
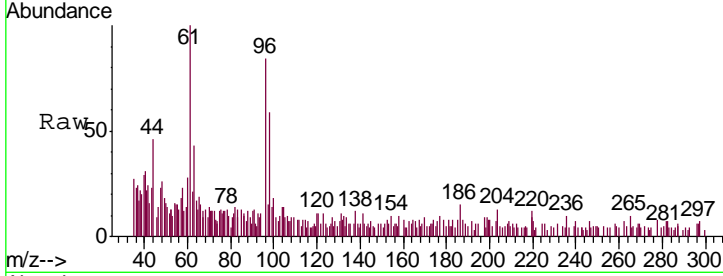




#27
 cis-1,2-Dichloroethene
 Concen: 0.574 ug/l
 RT: 4.59 min Scan# 608
 Delta R.T. 0.01 min
 Lab File: VX013940.D
 Acq: 11 Dec 2019 13:34

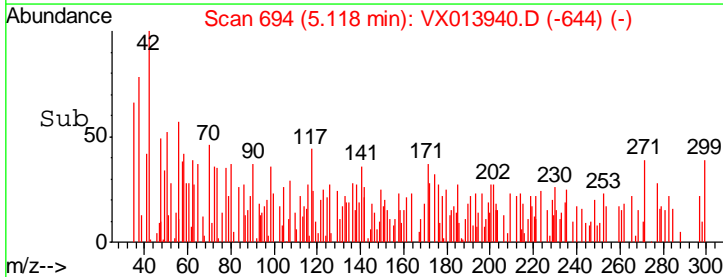
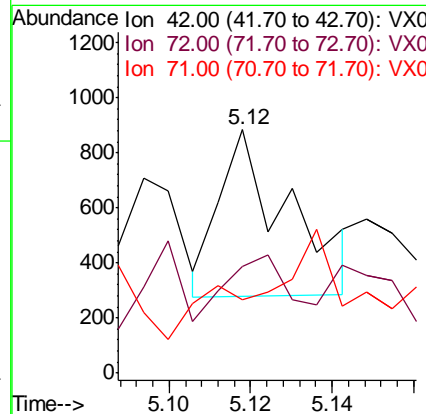
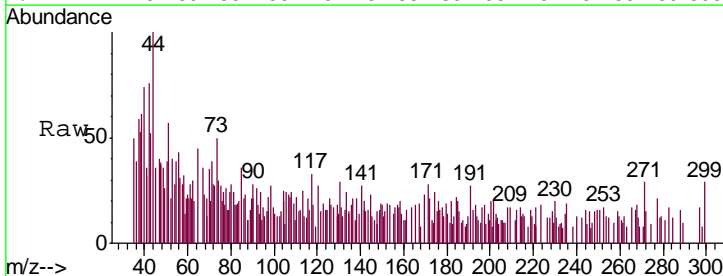
Instrument :
 MSVOA_X
ClientSampleID :
 RE134D3-20191204DL

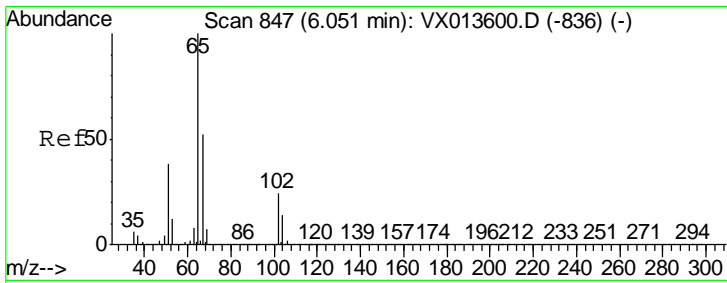
Tgt Ion	Resp	Lower	Upper
96	4018		
61	100	0.0	286.4
98	43.6	0.0	127.4



#29
 Tetrahydrofuran
 Concen: 0.232 ug/l
 RT: 5.12 min Scan# 694
 Delta R.T. 0.01 min
 Lab File: VX013940.D
 Acq: 11 Dec 2019 13:34

Tgt Ion	Resp	Lower	Upper
42	716		
72	100	36.3	54.5#
71	0.0	33.2	49.8#

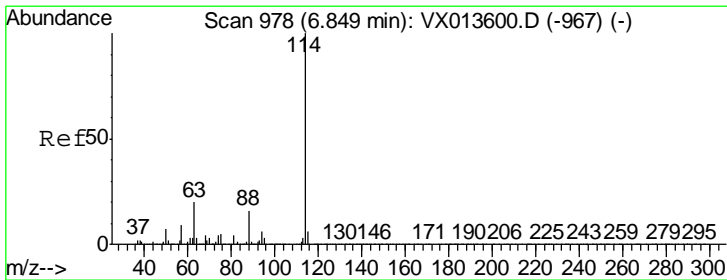
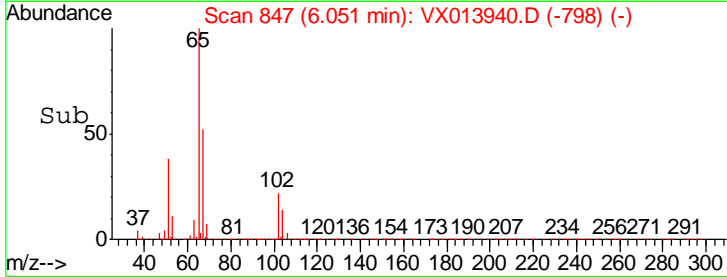
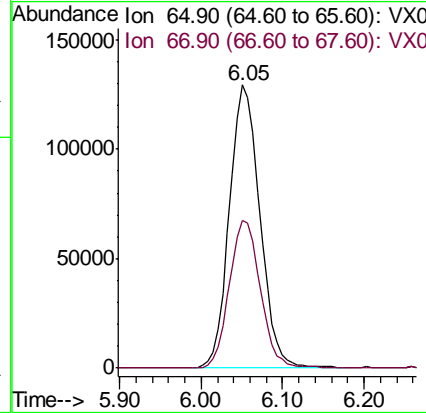
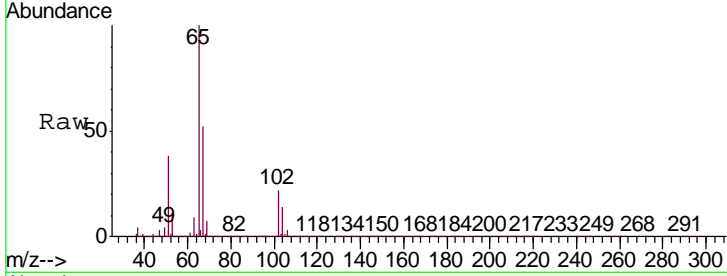




#33
 1,2-Dichloroethane-d4
 Concen: 48.950 ug/l
 RT: 6.05 min Scan# 847
 Delta R.T. -0.00 min
 Lab File: VX013940.D
 Acq: 11 Dec 2019 13:34

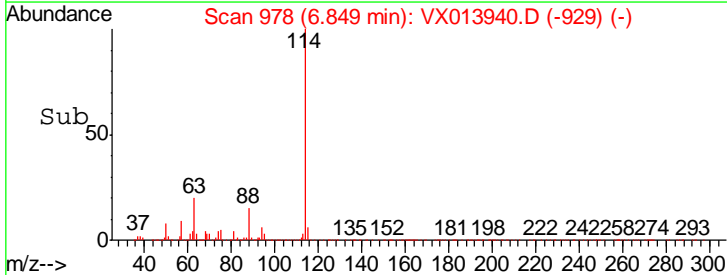
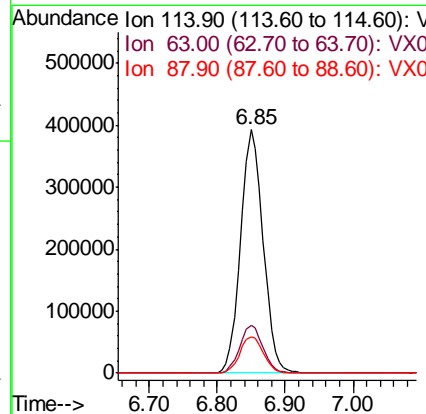
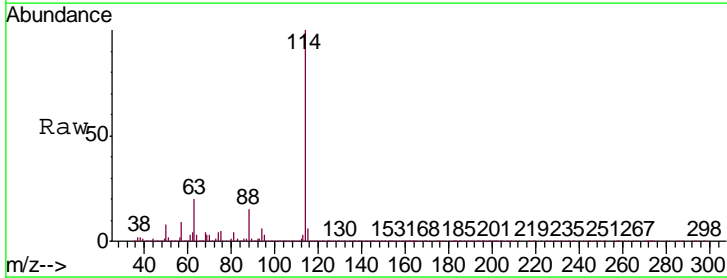
Instrument :
 MSVOA_X
 ClientSampled :
 RE134D3-20191204DL

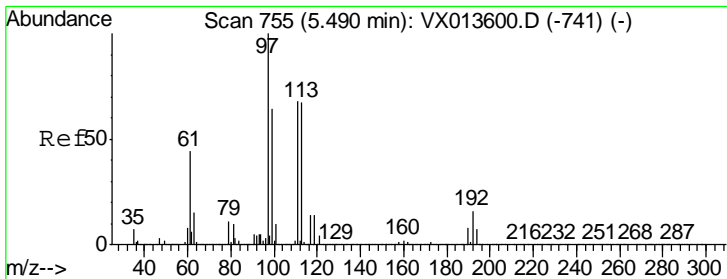
Tgt Ion: 65 Resp: 334125
 Ion Ratio Lower Upper
 65 100
 67 52.6 0.0 104.4



#34
 1,4-Difluorobenzene
 Concen: 50.000 ug/l
 RT: 6.85 min Scan# 978
 Delta R.T. -0.00 min
 Lab File: VX013940.D
 Acq: 11 Dec 2019 13:34

Tgt Ion: 114 Resp: 902098
 Ion Ratio Lower Upper
 114 100
 63 19.8 0.0 39.6
 88 15.0 0.0 31.4

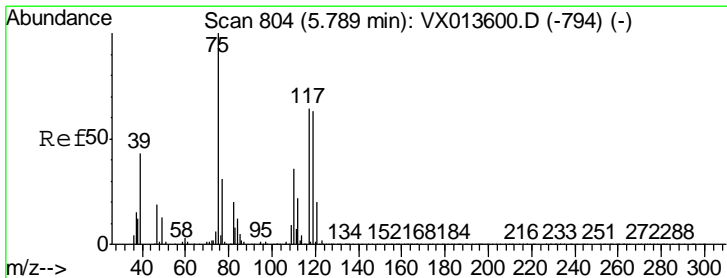
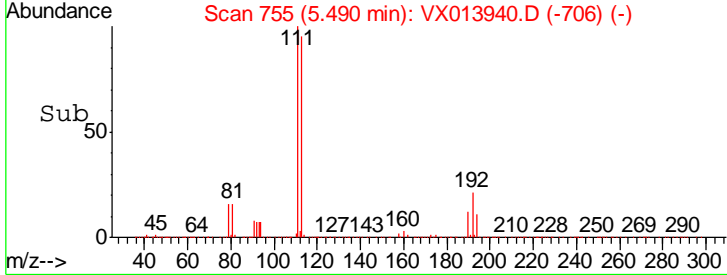
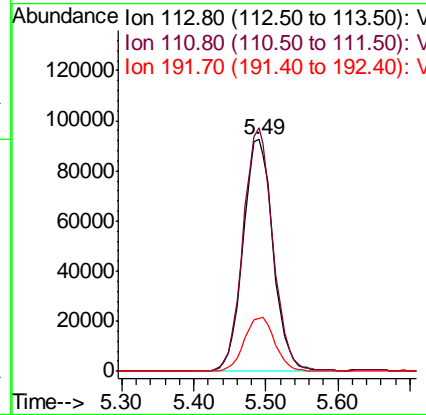
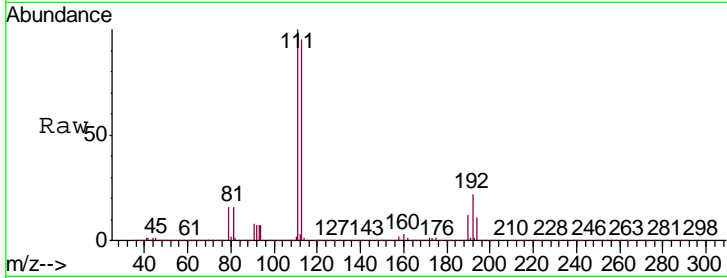




#35
 Dibromofluoromethane
 Concen: 47.952 ug/l
 RT: 5.49 min Scan# 755
 Delta R.T. -0.00 min
 Lab File: VX013940.D
 Acq: 11 Dec 2019 13:34

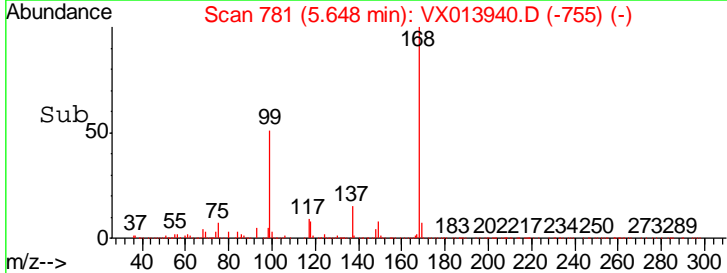
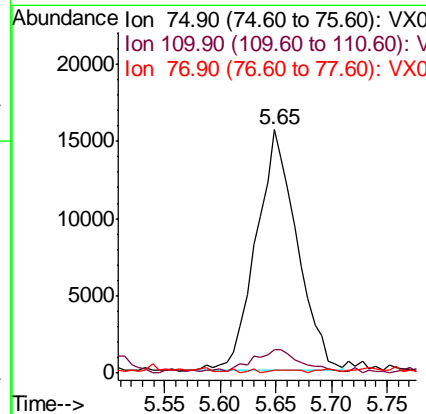
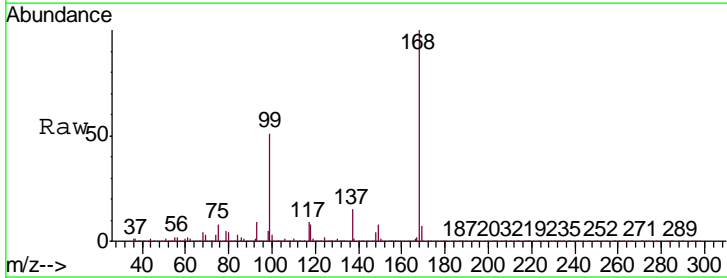
Instrument : MSVOA_X
 ClientSampleID : RE134D3-20191204DL

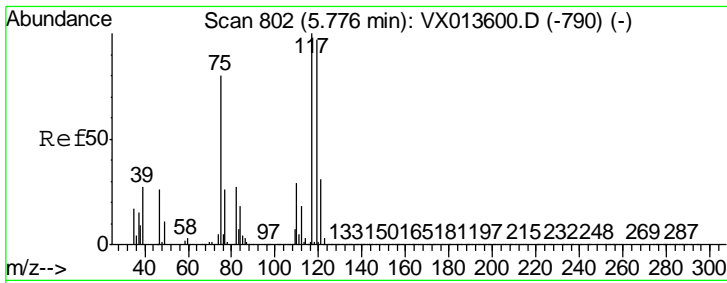
Tgt Ion	Resp	Lower	Upper
113	267425		
111	103.8	83.6	125.4
192	23.7	19.2	28.8



#36
 1,1-Dichloropropene
 Concen: 4.868 ug/l
 RT: 5.65 min Scan# 781
 Delta R.T. -0.14 min
 Lab File: VX013940.D
 Acq: 11 Dec 2019 13:34

Tgt Ion	Resp	Lower	Upper
75	39860		
110	10.9	18.1	54.1#
77	1.1	24.5	36.7#

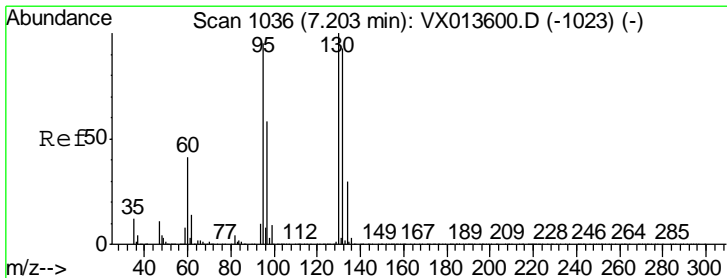
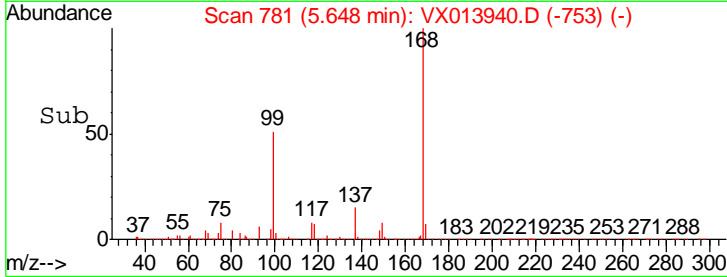
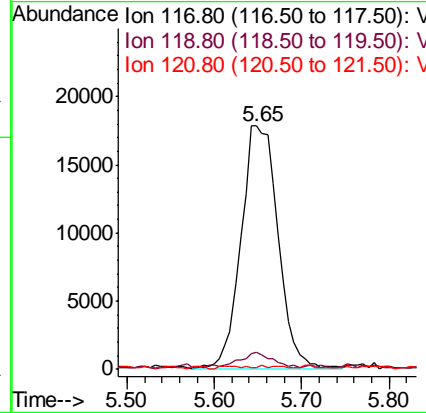
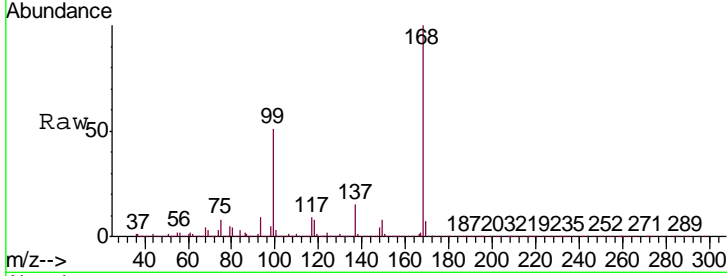




#38
 Carbon Tetrachloride
 Concen: 7.007 ug/l
 RT: 5.65 min Scan# 781
 Delta R.T. -0.13 min
 Lab File: VX013940.D
 Acq: 11 Dec 2019 13:34

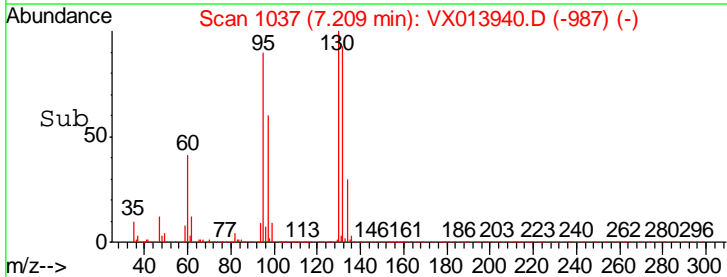
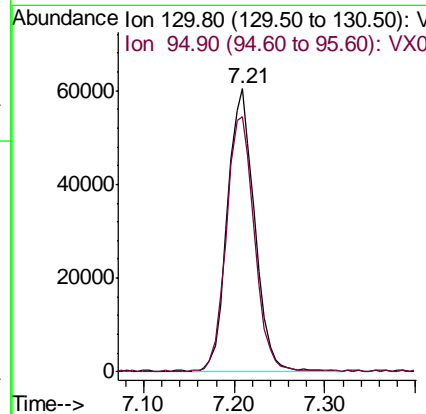
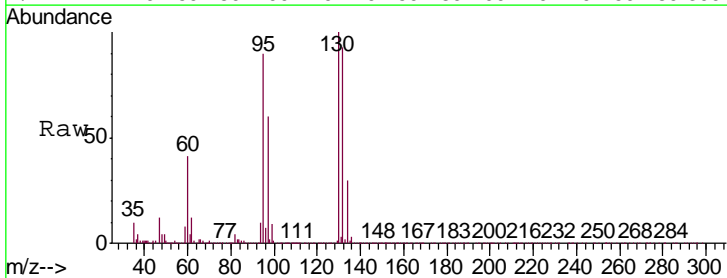
Instrument : MSVOA_X
 ClientSampleID : RE134D3-20191204DL

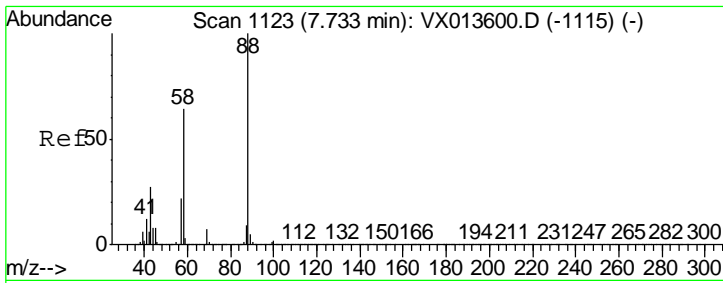
Tgt Ion	Resp	Lower	Upper
117	100		
119	6.6	77.5	116.3#
121	1.0	25.0	37.6#



#44
 Trichloroethene
 Concen: 18.204 ug/l
 RT: 7.21 min Scan# 1037
 Delta R.T. 0.01 min
 Lab File: VX013940.D
 Acq: 11 Dec 2019 13:34

Tgt Ion	Resp	Lower	Upper
130	100		
95	90.1	0.0	190.8

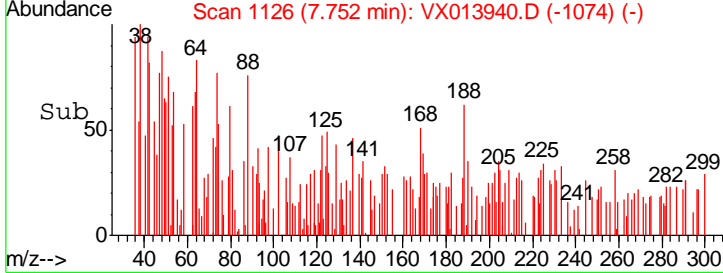
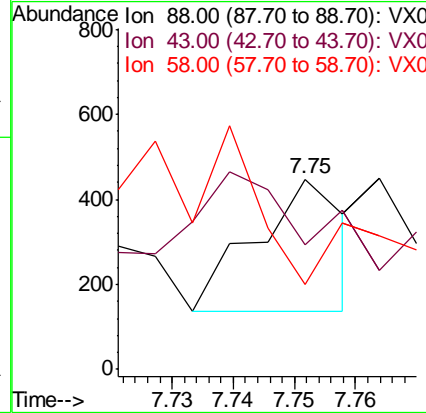
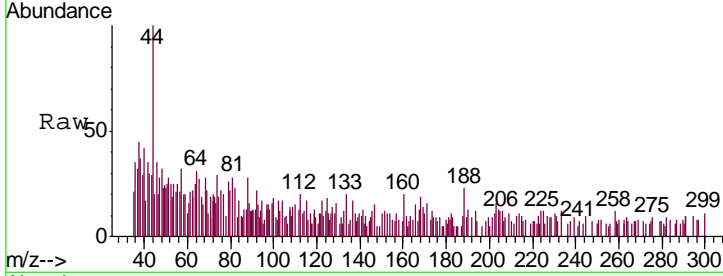




#49
 1,4-Dioxane
 Concen: 1.903 ug/l
 RT: 7.75 min Scan# 1126
 Delta R.T. 0.02 min
 Lab File: VX013940.D
 Acq: 11 Dec 2019 13:34

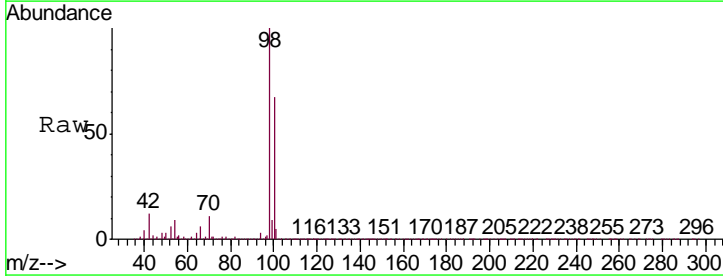
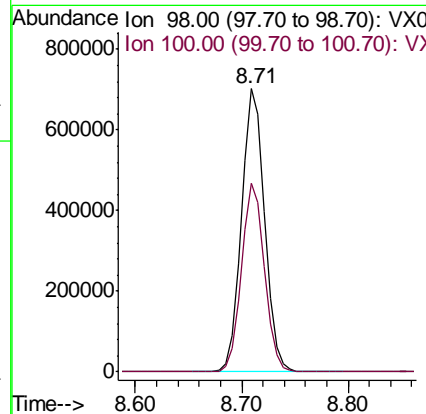
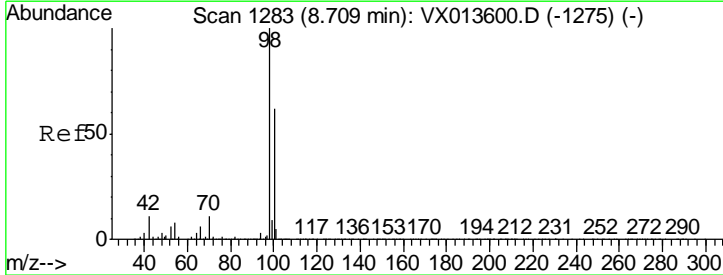
Instrument : MSVOA_X
 Client Sampled : RE134D3-20191204DL

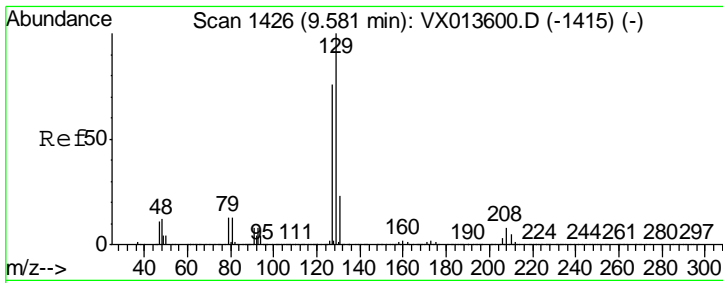
Tgt Ion	Resp	Lower	Upper
88	313		
43	0.0	25.8	38.6#
58	101.0	54.6	82.0#



#50
 Toluene-d8
 Concen: 49.380 ug/l
 RT: 8.71 min Scan# 1283
 Delta R.T. -0.00 min
 Lab File: VX013940.D
 Acq: 11 Dec 2019 13:34

Tgt Ion	Resp	Lower	Upper
98	1072935		
100	66.0	53.1	79.7

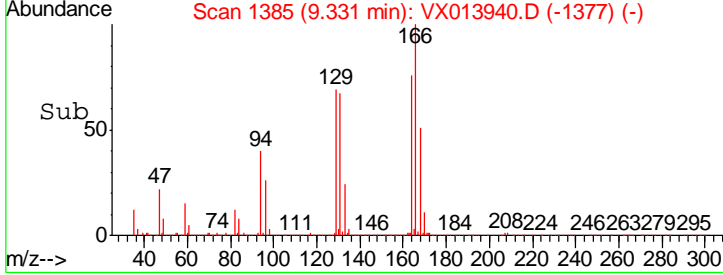
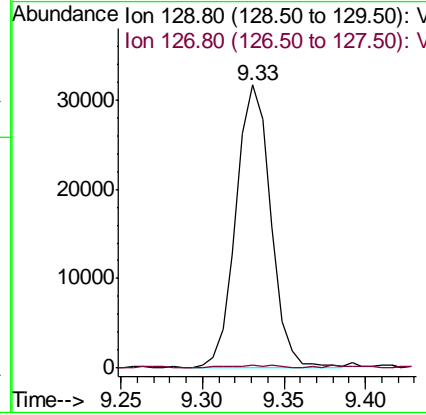
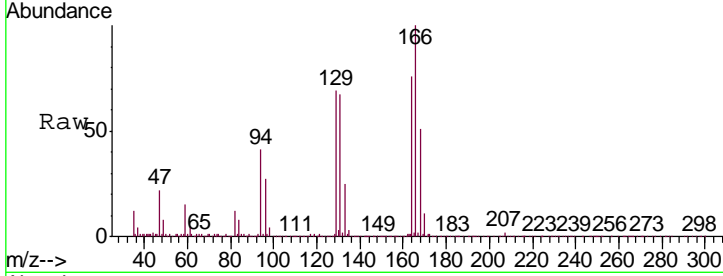




#60
 Dibromochloromethane
 Concen: 7.218 ug/l
 RT: 9.33 min Scan# 1385
 Delta R.T. -0.25 min
 Lab File: VX013940.D
 Acq: 11 Dec 2019 13:34

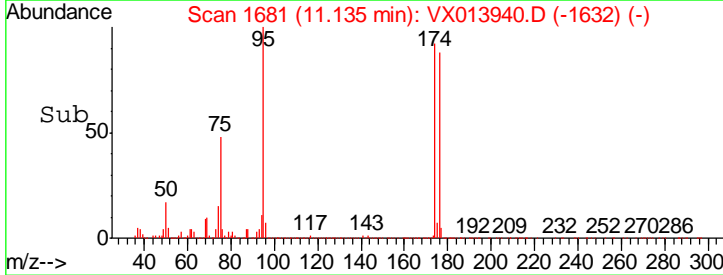
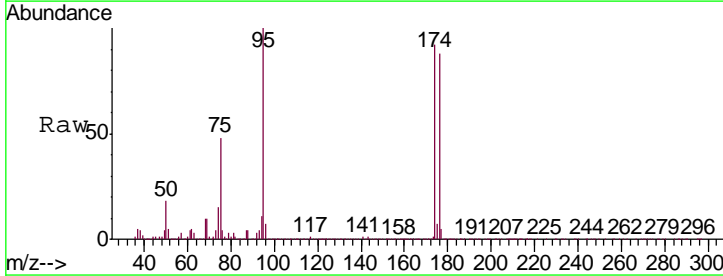
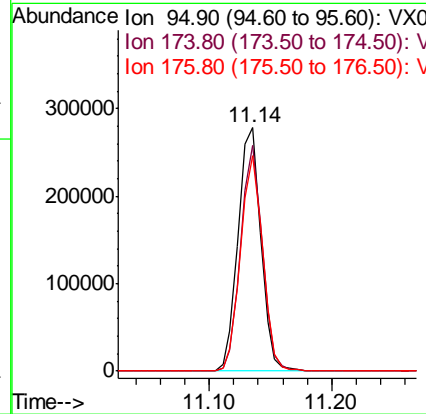
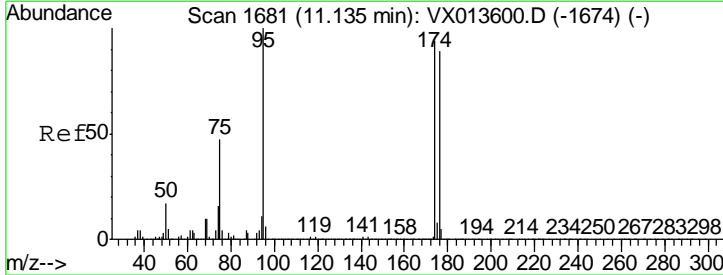
Instrument :
 MSVOA_X
ClientSampled :
 RE134D3-20191204DL

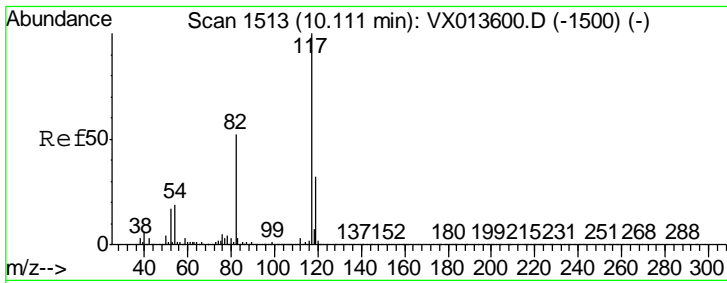
Tgt Ion: 129 Resp: 46769
 Ion Ratio Lower Upper
 129 100
 127 0.9 38.5 115.5#



#62
 4-Bromofluorobenzene
 Concen: 45.727 ug/l
 RT: 11.14 min Scan# 1681
 Delta R.T. -0.00 min
 Lab File: VX013940.D
 Acq: 11 Dec 2019 13:34

Tgt Ion: 95 Resp: 358282
 Ion Ratio Lower Upper
 95 100
 174 87.8 0.0 180.0
 176 85.8 0.0 173.6

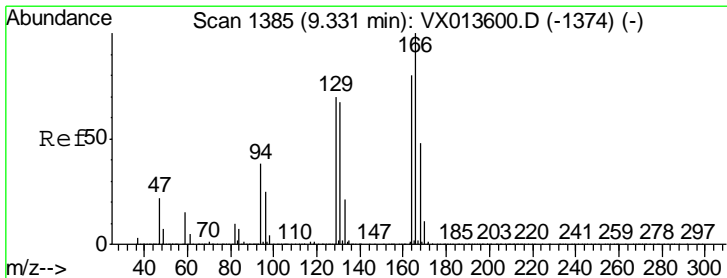
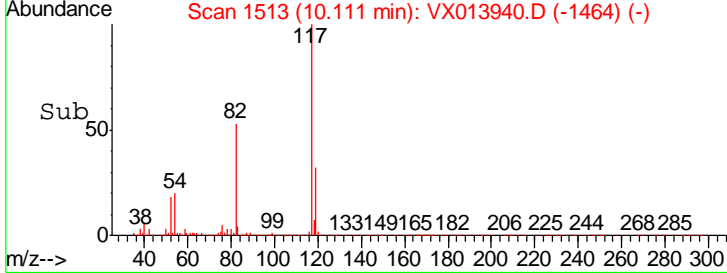
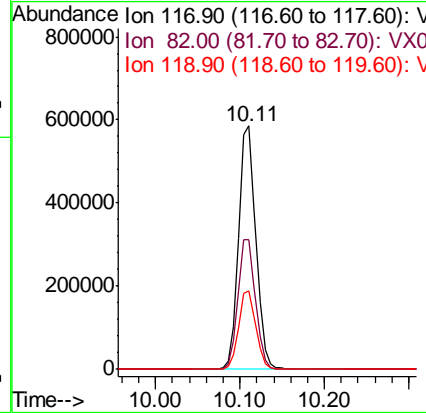
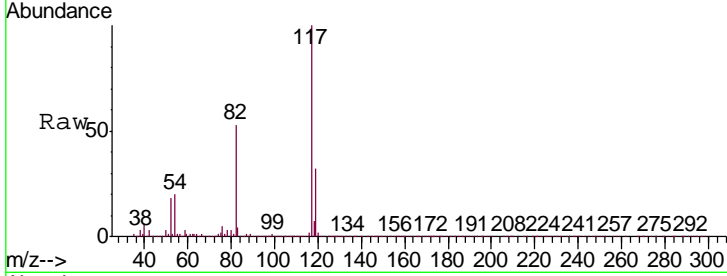




#63
 Chlorobenzene-d5
 Concen: 50.000 ug/l
 RT: 10.11 min Scan# 1513
 Delta R.T. -0.00 min
 Lab File: VX013940.D
 Acq: 11 Dec 2019 13:34

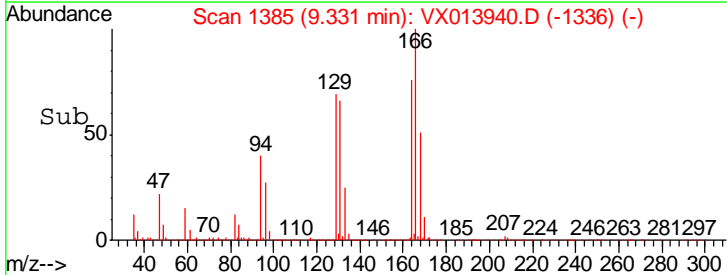
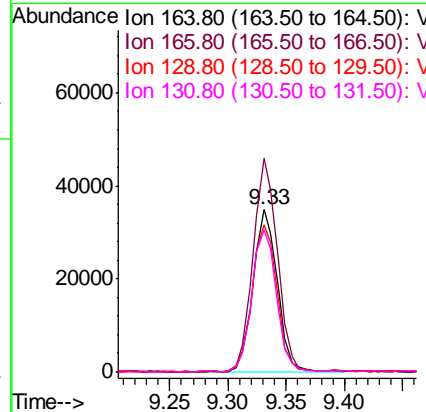
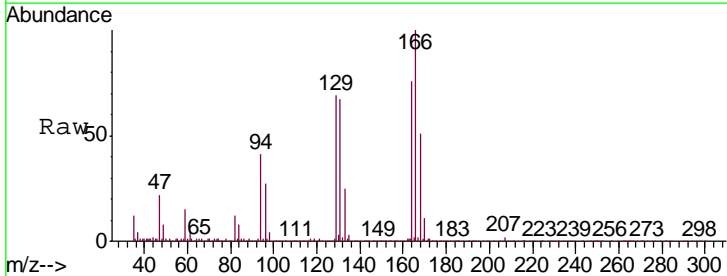
Instrument : MSVOA_X
 ClientSampleID : RE134D3-20191204DL

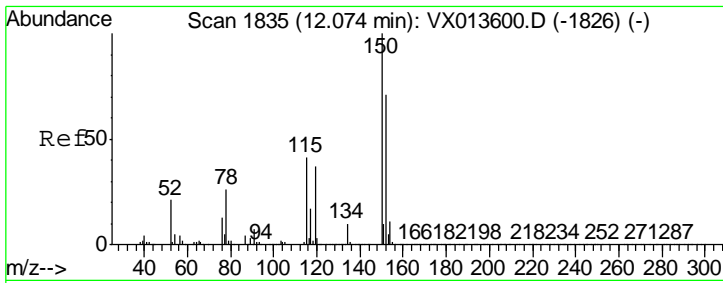
Tgt Ion	Resp	Lower	Upper
117	100		
82	53.3	41.8	62.8
119	32.4	25.8	38.8



#64
 Tetrachloroethene
 Concen: 8.419 ug/l
 RT: 9.33 min Scan# 1385
 Delta R.T. -0.00 min
 Lab File: VX013940.D
 Acq: 11 Dec 2019 13:34

Tgt Ion	Resp	Lower	Upper
164	100		
166	131.5	99.7	149.5
129	90.5	70.1	105.1
131	87.3	66.9	100.3

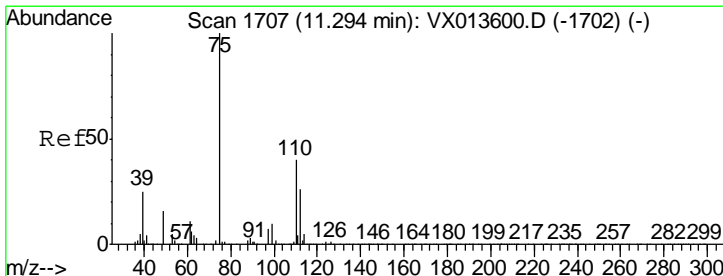
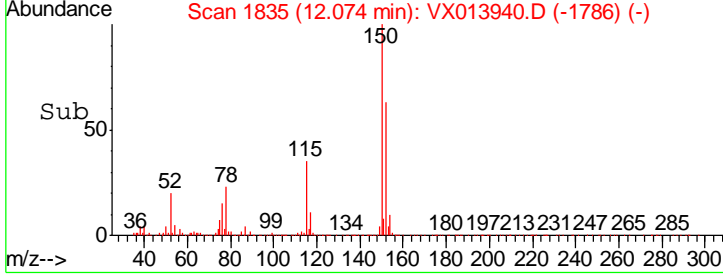
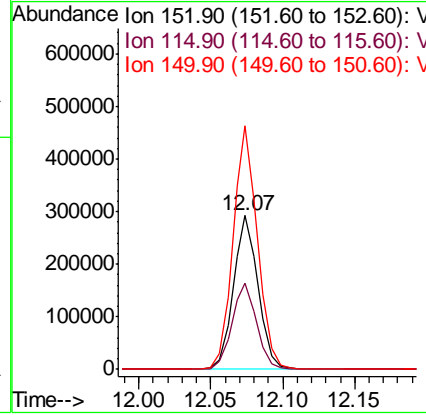
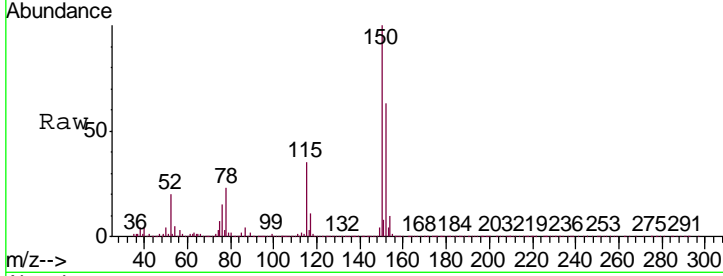




#72
 1,4-Dichlorobenzene-d4
 Concen: 50.000 ug/l
 RT: 12.07 min Scan# 1835
 Delta R.T. -0.00 min
 Lab File: VX013940.D
 Acq: 11 Dec 2019 13:34

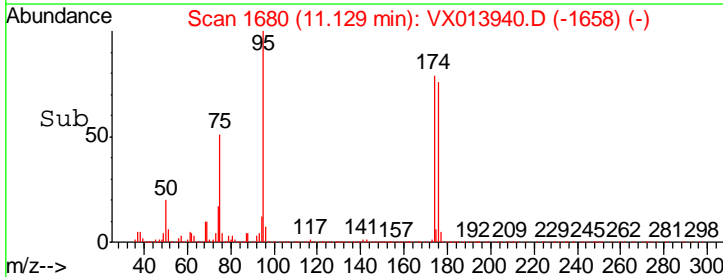
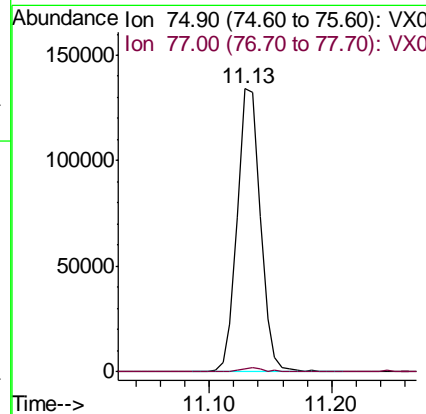
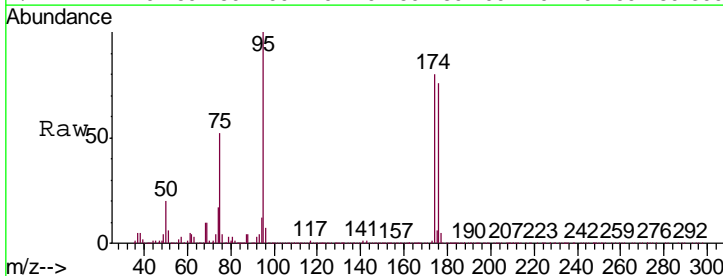
Instrument : MSVOA_X
 ClientSampleID : RE134D3-20191204DL

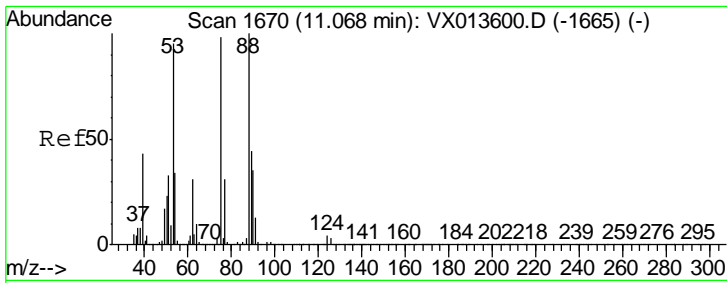
Tgt Ion	Resp	Lower	Upper
152	100		
115	56.4	38.4	115.1
150	156.9	0.0	346.8



#76
 1,2,3-Trichloropropane
 Concen: 22.345 ug/l
 RT: 11.13 min Scan# 1680
 Delta R.T. -0.16 min
 Lab File: VX013940.D
 Acq: 11 Dec 2019 13:34

Tgt Ion	Resp	Lower	Upper
75	100		
77	1.6	19.1	57.5#

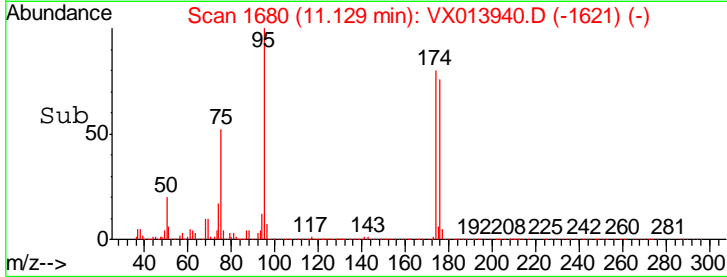
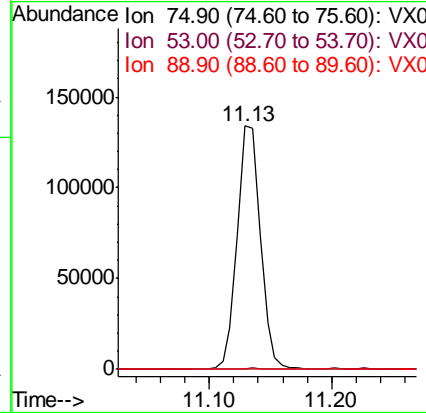
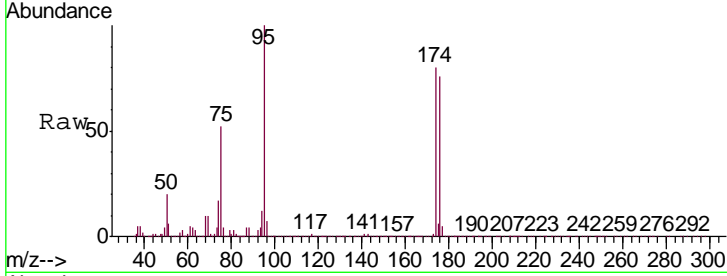




#81
 trans-1,4-Dichloro-2-butene
 Concen: 61.133 ug/l
 RT: 11.13 min Scan# 1680
 Delta R.T. 0.06 min
 Lab File: VX013940.D
 Acq: 11 Dec 2019 13:34

Instrument :
 MSVOA_X
 ClientSampleID :
 RE134D3-20191204DL

Tgt Ion	Resp	Lower	Upper
75	100		
53	0.2	78.2	117.2#
89	0.3	35.4	53.2#



#92
 1,2-Dibromo-3-Chloropropane
 Concen: 0.228 ug/l
 RT: 13.06 min Scan# 1997
 Delta R.T. 0.07 min
 Lab File: VX013940.D
 Acq: 11 Dec 2019 13:34

Tgt Ion	Resp	Lower	Upper
75	100		
155	56.4	47.6	142.8
157	84.4	62.1	186.2

