

Data Path : Z:\voasrv\HPCHEM1\MSVOA_X\Data\VX121120\
 Data File : VX019867.D
 Acq On : 11 Dec 2020 10:26
 Operator : JC/MD
 Sample : VX1211WBL01
 Misc : 5.0mL/MSVOA_X/WATER
 ALS Vial : 4 Sample Multiplier: 1

Instrument :
 MSVOA_X
ClientSampleId :
 VX1211WBL01

Quant Time: Dec 12 00:20:39 2020
 Quant Method : Z:\VOASRV\HPCHEM1\MSVOA_X\METHOD\624X120820W.M
 Quant Title : METHOD 624 VOLATILE ORGANIC ANALYSIS
 QLast Update : Wed Dec 09 06:09:21 2020
 Response via : Initial Calibration

Compound	R. T.	QI on	Response	Conc	Units	Dev(Min)

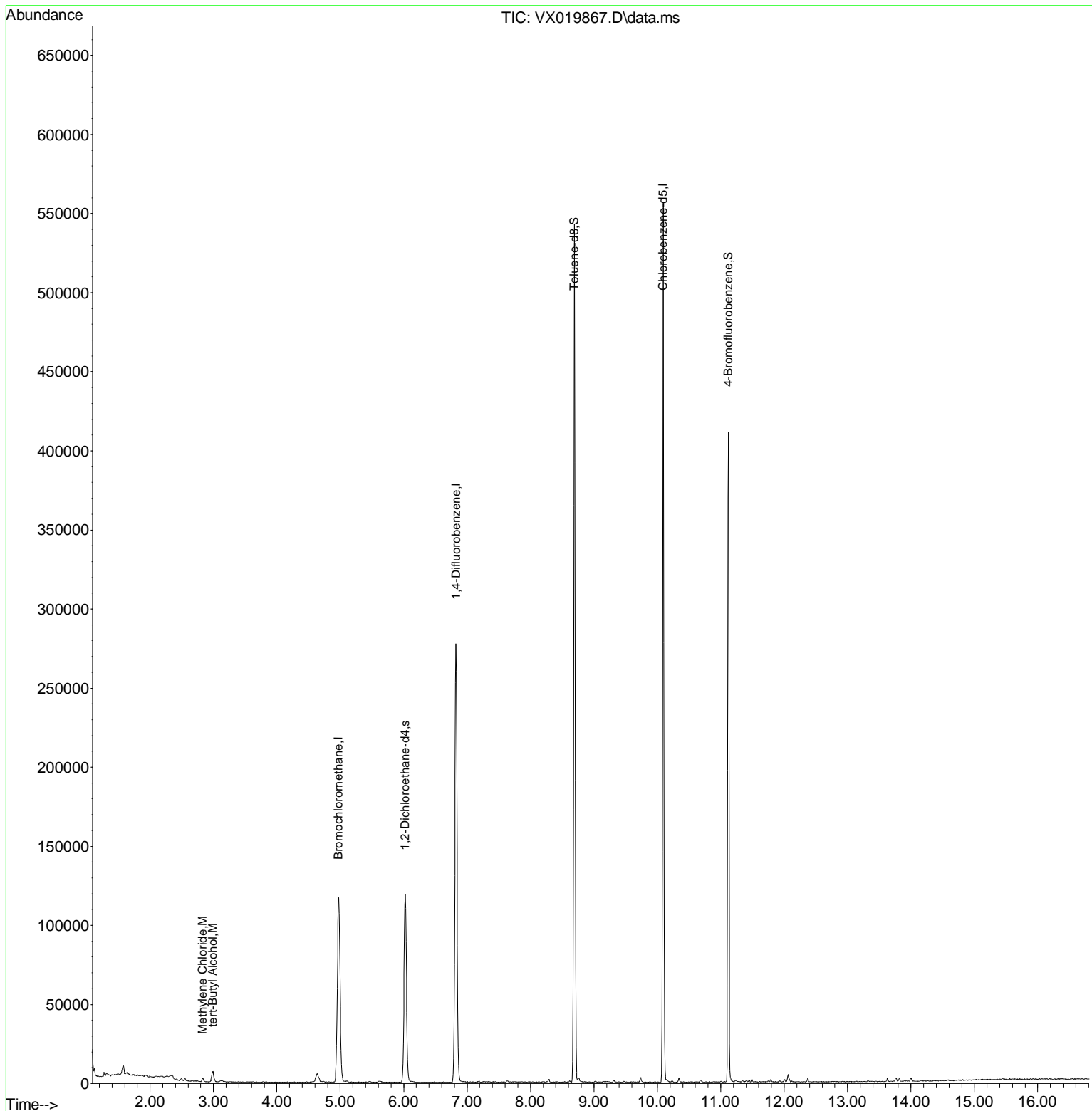
Internal Standards						
1) Bromochloromethane	4.970	128	52614	30.00	ug/l	0.00
28) 1,4-Difluorobenzene	6.824	114	285338	30.00	ug/l	0.00
57) Chlorobenzene-d5	10.091	117	253702	30.00	ug/l	0.00
System Monitoring Compounds						
27) 1,2-Dichloroethane-d4	6.025	65	113013	30.99	ug/l	0.00
Spiked Amount	30.000	Range 91 - 110	Recovery =	103.30%		
60) 4-Bromofluorobenzene	11.122	95	115249	27.05	ug/l	0.00
Spiked Amount	30.000	Range 63 - 112	Recovery =	90.17%		
63) Toluene-d8	8.689	98	334776	30.12	ug/l	0.00
Spiked Amount	30.000	Range 91 - 112	Recovery =	100.40%		
Target Compounds						
18) Methylene Chloride	2.830	84	1029	0.29	ug/l	91
23) tert-Butyl Alcohol	2.989	59	4231	5.00	ug/l	# 98

(#) = qualifier out of range (m) = manual integration (+) = signals summed

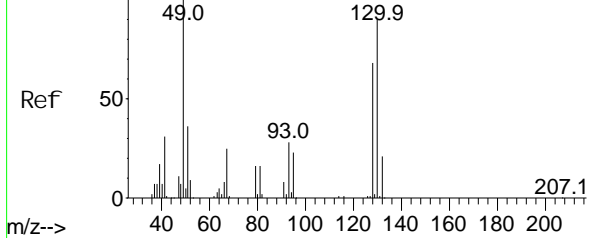
Data Path : Z:\voasrv\HPCHEM1\MSVOA_X\Data\VX121120\
 Data File : VX019867.D
 Acq On : 11 Dec 2020 10:26
 Operator : JC/MD
 Sample : VX1211WBL01
 Misc : 5.0mL/MSVOA_X/WATER
 ALS Vial : 4 Sample Multiplier: 1

Instrument :
 MSVOA_X
 ClientSampleID :
 VX1211WBL01

Quant Time: Dec 12 00:20:39 2020
 Quant Method : Z:\VOASRV\HPCHEM1\MSVOA_X\METHOD\624X120820W.M
 Quant Title : METHOD 624 VOLATILE ORGANIC ANALYSIS
 QLast Update : Wed Dec 09 06:09:21 2020
 Response via : Initial Calibration



Abundance Scan 637 (4.971 min): VX019757.D\data.ms (-626)#(4)

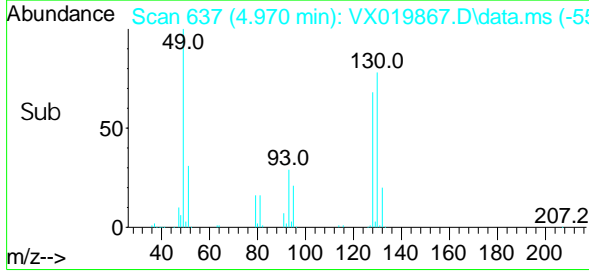
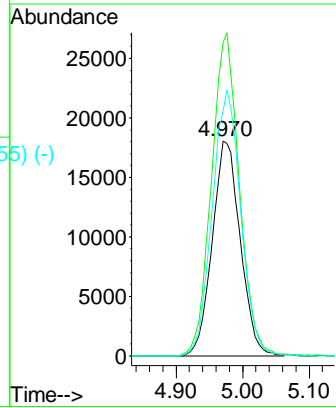
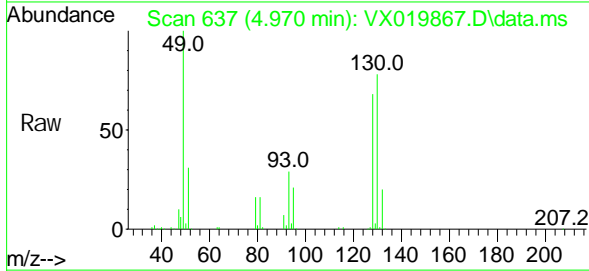


Bromochloromethane
Concen: 30.00 ug/l
RT: 4.970 min Scan# 637
Delta R.T. -0.001 min
Lab File: VX019867.D
Acq: 11 Dec 2020 10:26

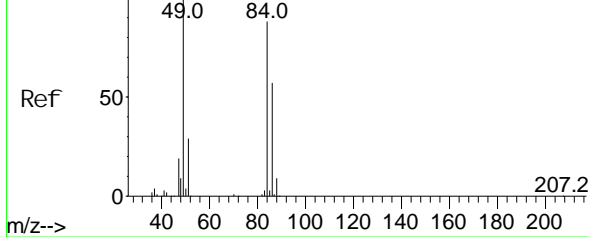
Instrument : MSVOA_X
Client Sampled : VX1211WBL01

Tgt Ion: 128 Resp: 52614

Ion	Ratio	Lower	Upper
128	100		
49	149.6	0.0	367.5
130	126.3	0.0	318.8



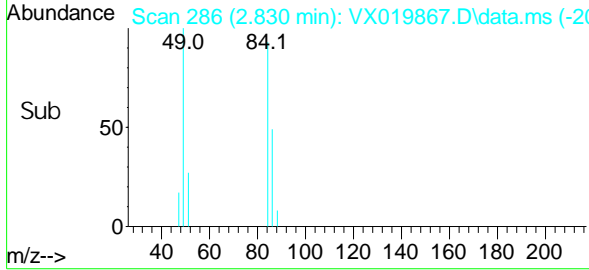
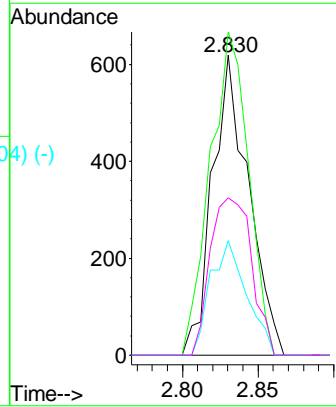
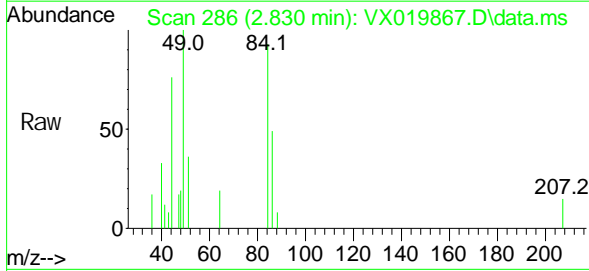
Abundance Scan 286 (2.831 min): VX019757.D\data.ms (-279)#(18)

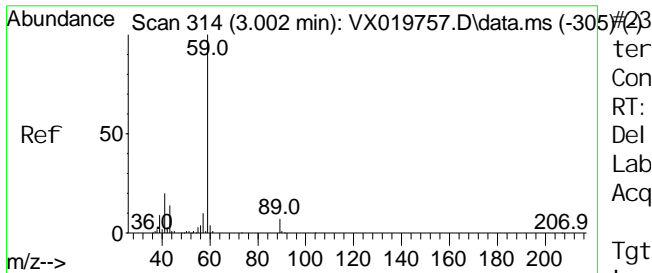


Methylene Chloride
Concen: 0.29 ug/l
RT: 2.830 min Scan# 286
Delta R.T. -0.001 min
Lab File: VX019867.D
Acq: 11 Dec 2020 10:26

Tgt Ion: 84 Resp: 1029

Ion	Ratio	Lower	Upper
84	100		
49	107.6	90.6	136.0
51	38.2	26.3	39.5
86	52.4	51.3	76.9

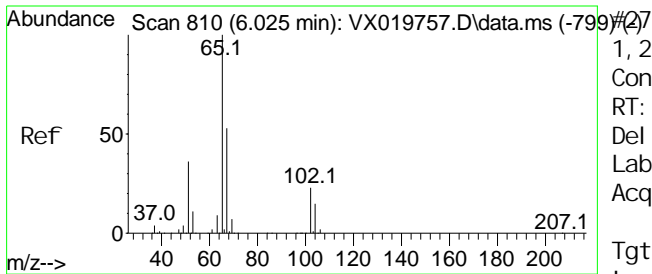
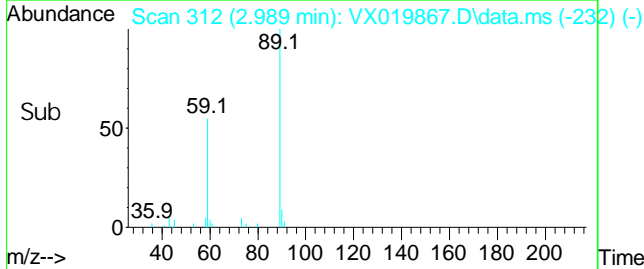
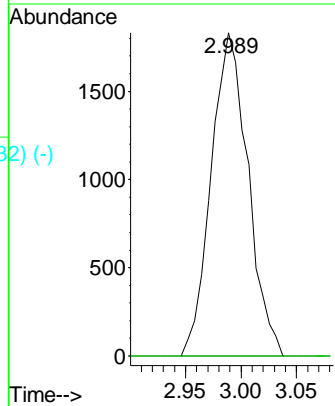
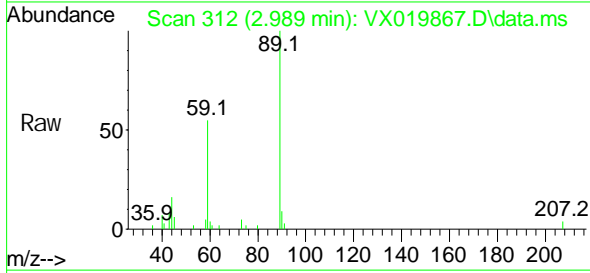




tert-Butyl Alcohol
 Concen: 5.00 ug/l
 RT: 2.989 min Scan# 312
 Delta R.T. -0.013 min
 Lab File: VX019867.D
 Acq: 11 Dec 2020 10:26

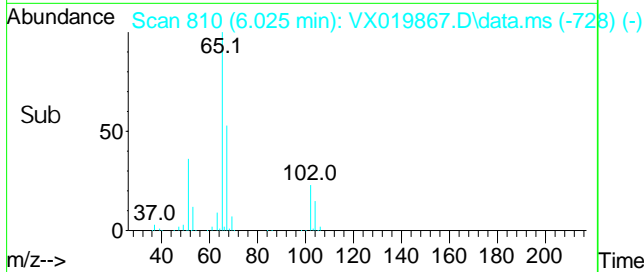
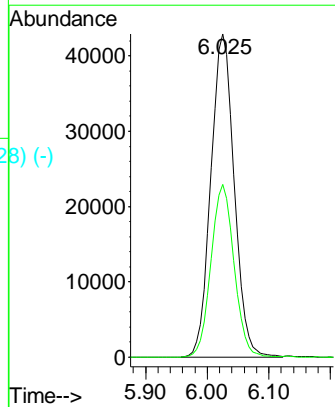
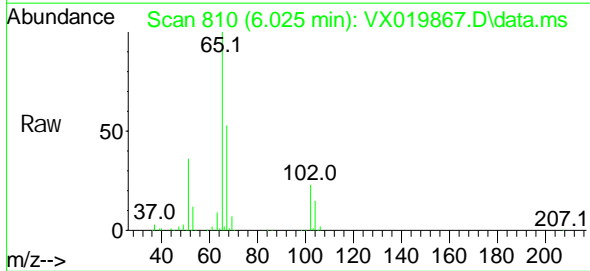
Instrument :
 MSVOA_X
Client Sampled :
 VX1211WBL01

Tgt Ion: 59 Resp: 4231
 Ion Ratio Lower Upper
 59 100
 52 5.9 0.1 0.1#

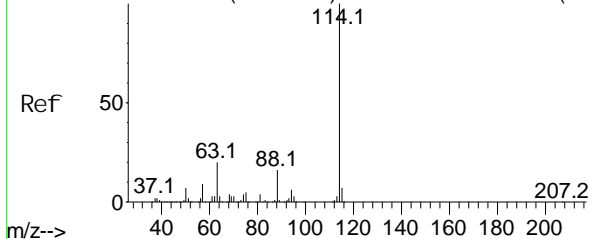


1,2-Dichloroethane-d4
 Concen: 30.99 ug/l
 RT: 6.025 min Scan# 810
 Delta R.T. -0.000 min
 Lab File: VX019867.D
 Acq: 11 Dec 2020 10:26

Tgt Ion: 65 Resp: 113013
 Ion Ratio Lower Upper
 65 100
 67 52.7 41.9 62.9



Abundance Scan 941 (6.824 min): VX019757.D\data.ms (-930) #28

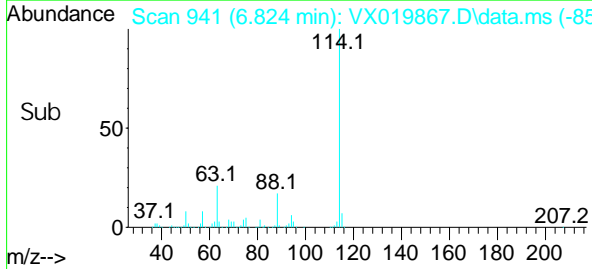
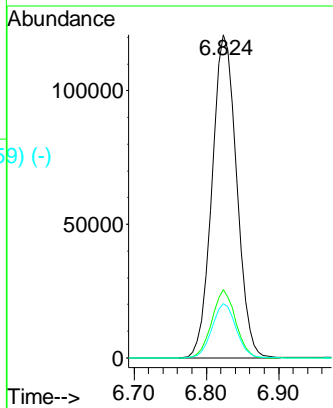
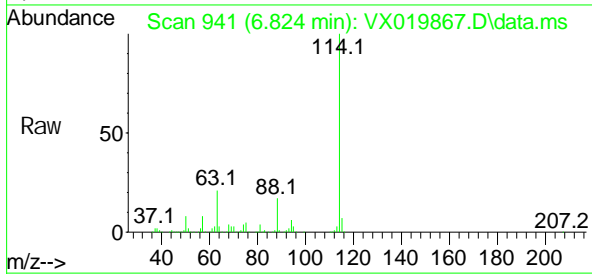


1,4-Difluorobenzene
Concen: 30.00 ug/l
RT: 6.824 min Scan# 941
Delta R.T. -0.000 min
Lab File: VX019867.D
Acq: 11 Dec 2020 10:26

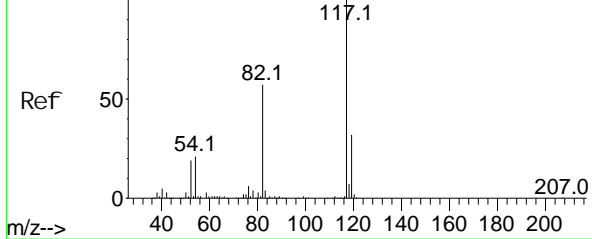
Instrument : MSVOA_X
Client Sampled : VX1211WBL01

Tgt Ion: 114 Resp: 285338

Ion	Ratio	Lower	Upper
114	100		
63	20.4	16.2	24.2
88	16.4	13.0	19.6



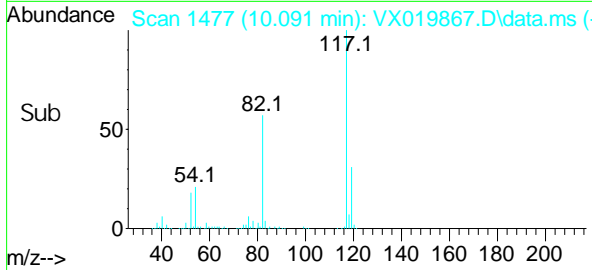
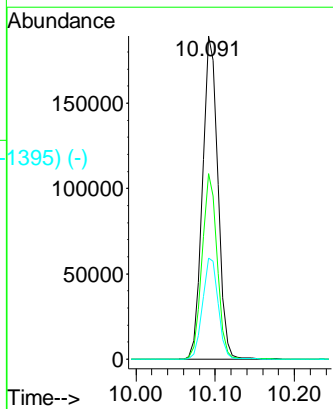
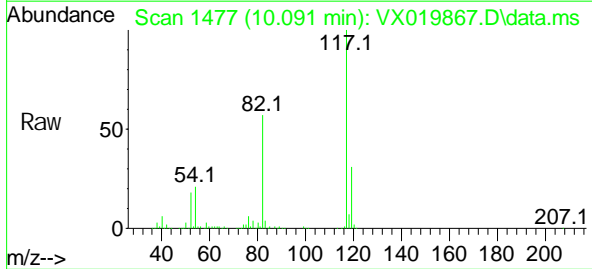
Abundance Scan 1477 (10.092 min): VX019757.D\data.ms (-1451) (-)

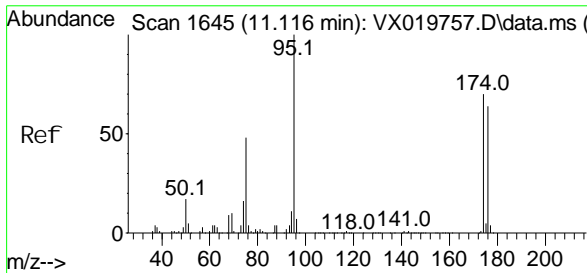


Chlorobenzene-d5
Concen: 30.00 ug/l
RT: 10.091 min Scan# 1477
Delta R.T. -0.001 min
Lab File: VX019867.D
Acq: 11 Dec 2020 10:26

Tgt Ion: 117 Resp: 253702

Ion	Ratio	Lower	Upper
117	100		
82	56.0	45.0	67.6
119	31.7	25.6	38.4

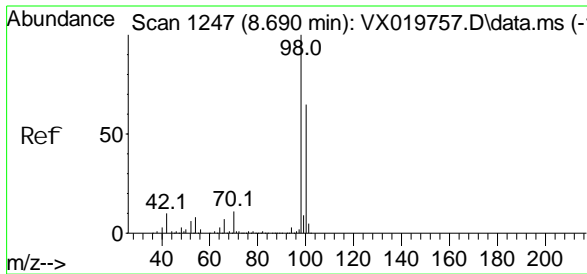
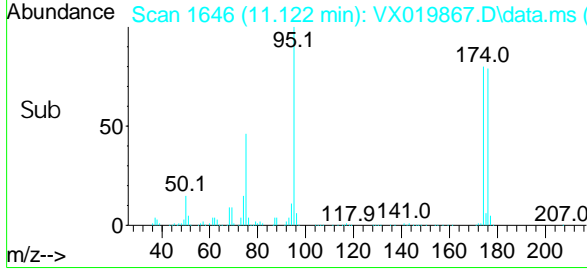
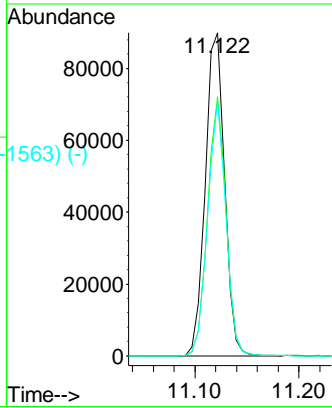
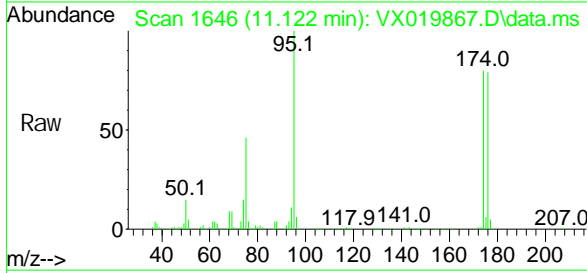




4-Bromofluorobenzene
 Concn: 27.05 ug/l
 RT: 11.122 min Scan# 1646
 Delta R.T. 0.006 min
 Lab File: VX019867.D
 Acq: 11 Dec 2020 10:26

Instrument :
 MSVOA_X
ClientSampleId :
 VX1211WBL01

Tgt Ion	Resp	Lower	Upper
95	115249		
174	77.1	63.0	94.4
176	74.4	59.9	89.9



Toluene-d8
 Concn: 30.12 ug/l
 RT: 8.689 min Scan# 1247
 Delta R.T. -0.000 min
 Lab File: VX019867.D
 Acq: 11 Dec 2020 10:26

Tgt Ion	Resp	Lower	Upper
98	334776		
100	66.0	53.0	79.4

