

Data Path : Z:\voasrv\HPCHEM1\MSVOA_X\Data\VX121121\
 Data File : VX025753.D
 Acq On : 11 Dec 2021 19:06
 Operator : JC/MD
 Sample : M5026-08
 Misc : 5.0mL/MSVOA_X/WATER
 ALS Vial : 24 Sample Multiplier: 1

Instrument :
 MSVOA_X
 ClientSampleId :
 COD10

Integration Parameters: LSCINT.P

Integrator: RTE
 Smoothing : OFF
 Sampling : 1
 Start Thrs : 0.2
 Stop Thrs : 0

Filtering: 5
 Min Area: 0 % of largest Peak
 Max Peaks: 100
 Peak Location: TOP

If leading or trailing edge < 100 prefer < Baseline drop else tangent >
 Peak separation: 5

Method : Z:\voasrv\HPCHEM1\MSVOA_X\Method\SFAMXLM112221WMA.M
 Title : VOC Analysis

Signal : TIC: VX025753.D\data.ms

peak #	R.T. min	first scan	max scan	last scan	PK TY	peak height	corr. area	corr. % max.	% of total
1	1.246	23	26	29	rBV2	7249	10467	3.66%	0.455%
2	1.367	43	46	53	rVB	38115	36887	12.91%	1.604%
3	1.666	91	95	103	rVB	28052	37232	13.03%	1.619%
4	2.306	194	200	210	rBV	57055	92879	32.51%	4.040%
5	2.825	283	285	287	rBV	274	276	0.10%	0.012%
6	2.940	300	304	312	rVB3	517	1402	0.49%	0.061%
7	3.007	312	315	319	rBV2	334	531	0.19%	0.023%
8	3.233	351	352	353	rBV	392	230	0.08%	0.010%
9	3.337	364	369	376	rBV2	1306	2904	1.02%	0.126%
10	3.715	429	431	435	rVB	220	207	0.07%	0.009%
11	4.147	500	502	507	rVB	372	426	0.15%	0.019%
12	4.208	510	512	514	rVB2	267	238	0.08%	0.010%
13	4.239	514	517	518	rBV2	313	307	0.11%	0.013%
14	4.464	545	554	566	rBV	24556	70134	24.55%	3.051%
15	4.867	617	620	623	rBV	302	344	0.12%	0.015%
16	4.989	638	640	641	rBV2	289	264	0.09%	0.011%
17	5.068	641	653	668	rVB	38701	121012	42.35%	5.263%
18	5.263	683	685	689	rVB2	229	309	0.11%	0.013%
19	5.544	729	731	733	rBV	408	286	0.10%	0.012%
20	5.562	733	734	739	rVB3	329	443	0.16%	0.019%
21	5.836	776	779	780	rBV	274	245	0.09%	0.011%
22	5.885	785	787	791	rVV	218	298	0.10%	0.013%
23	5.976	791	802	815	rVV2	96780	285735	100.00%	12.428%
24	6.196	836	838	841	rVB	230	222	0.08%	0.010%
25	6.251	844	847	848	rBV2	243	232	0.08%	0.010%
26	6.446	877	879	884	rBV2	233	348	0.12%	0.015%
27	6.482	884	885	887	rVB2	386	226	0.08%	0.010%
28	6.507	887	889	890	rBV	293	245	0.09%	0.011%
29	6.769	922	932	942	rBV	81739	193237	67.63%	8.405%
30	6.921	956	957	959	rBV	281	232	0.08%	0.010%
31	6.982	965	967	968	rBV	302	221	0.08%	0.010%
32	7.031	974	975	978	rBV2	229	239	0.08%	0.010%
33	7.116	984	989	997	rVB5	2128	4865	1.70%	0.212%
34	7.232	1004	1008	1010	rBV2	234	291	0.10%	0.013%
35	7.312	1013	1021	1036	rVV	60772	131692	46.09%	5.728%
36	7.482	1047	1049	1052	rBV2	337	496	0.17%	0.022%

Data Path : Z:\voasrv\HPCHEM1\MSVOA_X\Data\VX121121\
 Data File : VX025753.D
 Acq On : 11 Dec 2021 19:06
 Operator : JC/MD
 Sample : M5026-08
 Misc : 5.0mL/MSVOA_X/WATER
 ALS Vial : 24 Sample Multiplier: 1

Instrument :
 MSVOA_X
 ClientSampleId :
 COD10

Integration Parameters: LSCINT.P
 Integrator: RTE
 Smoothing : OFF
 Sampling : 1
 Start Thrs : 0.2
 Stop Thrs : 0
 Filtering: 5
 Min Area: 0 % of largest Peak
 Max Peaks: 100
 Peak Location: TOP

If leading or trailing edge < 100 prefer < Baseline drop else tangent >
 Peak separation: 5

Method : Z:\voasrv\HPCHEM1\MSVOA_X\Method\SFAMXLM112221WMA.M
 Title : VOC Analysis

37	7.592	1061	1067	1074	rVB4	1985	3861	1.35%	0.168%
38	7.677	1078	1081	1082	rBV	233	209	0.07%	0.009%
39	8.007	1133	1135	1140	rBV2	269	365	0.13%	0.016%
40	8.074	1145	1146	1150	rBV	341	371	0.13%	0.016%
41	8.220	1169	1170	1173	rBV	267	202	0.07%	0.009%
42	8.269	1177	1178	1180	rBV	271	200	0.07%	0.009%
43	8.330	1182	1188	1195	rBV	41885	67373	23.58%	2.930%
44	8.610	1230	1234	1235	rBV2	364	518	0.18%	0.023%
45	8.653	1235	1241	1249	rVV	146365	228201	79.86%	9.926%
46	8.726	1249	1253	1258	rVB3	1981	3308	1.16%	0.144%
47	8.836	1269	1271	1273	rBV	227	211	0.07%	0.009%
48	8.951	1285	1290	1298	rBV	28464	42805	14.98%	1.862%
49	9.116	1314	1317	1320	rBV	562	540	0.19%	0.023%
50	9.171	1323	1326	1327	rBV2	277	276	0.10%	0.012%
51	9.275	1341	1343	1346	rVB3	306	380	0.13%	0.017%
52	9.390	1356	1362	1374	rBV	102074	151383	52.98%	6.584%
53	9.476	1374	1376	1378	rVB	488	319	0.11%	0.014%
54	9.525	1380	1384	1388	rVB5	1232	1869	0.65%	0.081%
55	9.787	1425	1427	1430	rVV	274	245	0.09%	0.011%
56	9.829	1432	1434	1436	rBV	287	208	0.07%	0.009%
57	9.860	1438	1439	1442	rBV	244	206	0.07%	0.009%
58	10.055	1466	1471	1481	rBV	178604	237362	83.07%	10.324%
59	10.299	1509	1511	1515	rVB	499	591	0.21%	0.026%
60	10.470	1537	1539	1542	rBV2	216	290	0.10%	0.013%
61	10.634	1564	1566	1571	rBV	288	295	0.10%	0.013%
62	10.732	1580	1582	1584	rVB2	272	208	0.07%	0.009%
63	10.921	1609	1613	1614	rVB	224	246	0.09%	0.011%
64	11.116	1643	1645	1649	rBV3	469	668	0.23%	0.029%
65	11.195	1653	1658	1665	rBV	126786	149950	52.48%	6.522%
66	11.597	1722	1724	1727	rBV	343	417	0.15%	0.018%
67	11.725	1743	1745	1747	rBV2	250	236	0.08%	0.010%
68	11.756	1747	1750	1753	rVB3	474	560	0.20%	0.024%
69	11.847	1764	1765	1769	rBV2	409	574	0.20%	0.025%
70	12.024	1789	1794	1804	rVB	163415	203905	71.36%	8.869%
71	12.128	1808	1811	1812	rBV	421	355	0.12%	0.015%
72	12.152	1812	1815	1817	rVB3	436	369	0.13%	0.016%
73	12.225	1824	1827	1829	rBV2	218	238	0.08%	0.010%
74	12.323	1838	1843	1850	rVB	155036	195613	68.46%	8.508%
75	12.603	1887	1889	1891	rBV2	354	310	0.11%	0.013%
76	13.048	1961	1962	1964	rBV	322	237	0.08%	0.010%

Data Path : Z:\voasrv\HPCHEM1\MSVOA_X\Data\VX121121\
 Data File : VX025753.D
 Acq On : 11 Dec 2021 19:06
 Operator : JC/MD
 Sample : M5026-08
 Misc : 5.0mL/MSVOA_X/WATER
 ALS Vial : 24 Sample Multiplier: 1

Instrument :
 MSVOA_X
 ClientSampleId :
 COD10

Integration Parameters: LSCINT.P

Integrator: RTE
 Smoothing : OFF
 Sampling : 1
 Start Thrs : 0.2
 Stop Thrs : 0

Filtering: 5
 Min Area: 0 % of largest Peak
 Max Peaks: 100
 Peak Location: TOP

If leading or trailing edge < 100 prefer < Baseline drop else tangent >
 Peak separation: 5

Method : Z:\voasrv\HPCHEM1\MSVOA_X\Method\SFAMXML112221WMA.M
 Title : VOC Analysis

77	13.079	1964	1967	1969	rVV	360	408	0.14%	0.018%
78	13.103	1969	1971	1975	rVV2	375	464	0.16%	0.020%
79	13.152	1978	1979	1983	rVV	347	301	0.11%	0.013%
80	13.182	1983	1984	1986	rVV	290	202	0.07%	0.009%
81	13.225	1989	1991	1995	rVB2	285	319	0.11%	0.014%
82	13.262	1995	1997	1999	rBV2	181	219	0.08%	0.010%
83	13.829	2089	2090	2092	rBV	342	310	0.11%	0.013%
84	14.237	2155	2157	2159	rBV	276	221	0.08%	0.010%
85	14.377	2178	2180	2183	rBV2	286	286	0.10%	0.012%
86	14.566	2207	2211	2213	rBV	240	297	0.10%	0.013%
87	14.646	2222	2224	2226	rBV2	399	351	0.12%	0.015%
88	15.011	2283	2284	2286	rBV	420	368	0.13%	0.016%
89	15.213	2315	2317	2319	rVB	280	223	0.08%	0.010%
90	15.286	2327	2329	2331	rVB	370	281	0.10%	0.012%
91	15.420	2349	2351	2353	rBV2	294	313	0.11%	0.014%
92	15.566	2373	2375	2376	rVB2	474	291	0.10%	0.013%
93	15.591	2376	2379	2381	rBV2	420	570	0.20%	0.025%
94	15.712	2397	2399	2403	rVB2	282	309	0.11%	0.013%
95	15.792	2410	2412	2415	rVB	387	439	0.15%	0.019%
96	15.865	2422	2424	2425	rBV2	267	227	0.08%	0.010%
97	16.115	2463	2465	2466	rBV	331	257	0.09%	0.011%
98	16.401	2510	2512	2516	rVB2	443	543	0.19%	0.024%
99	16.432	2516	2517	2518	rBV	434	250	0.09%	0.011%
100	16.621	2546	2548	2553	rBV2	342	565	0.20%	0.025%

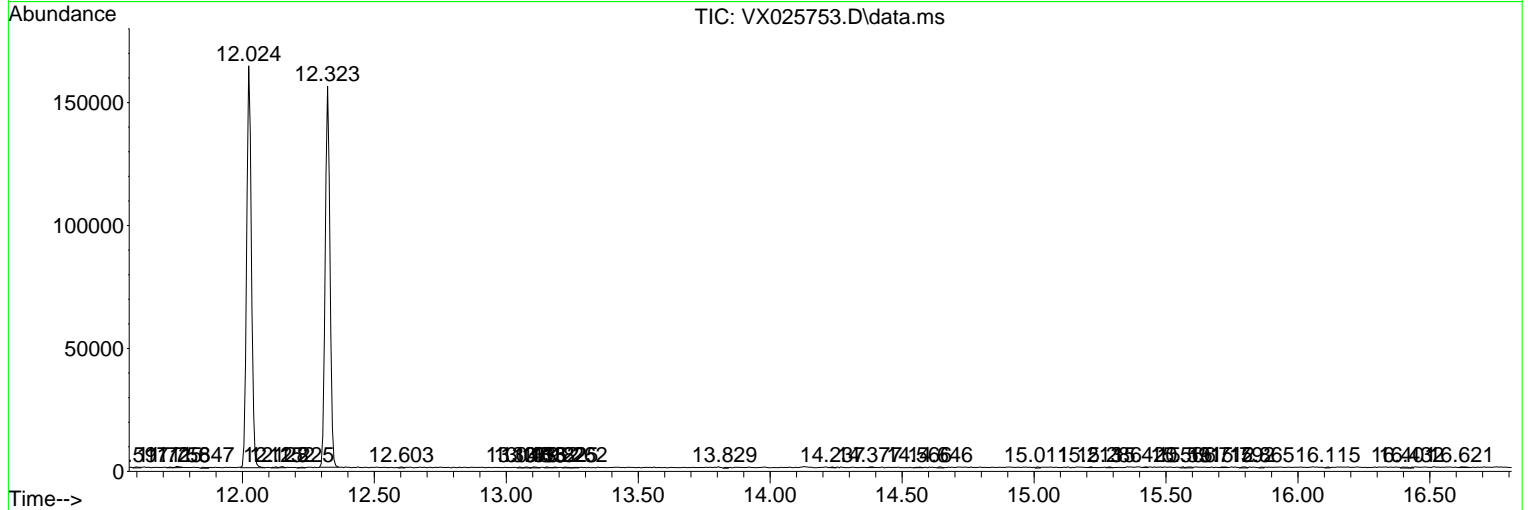
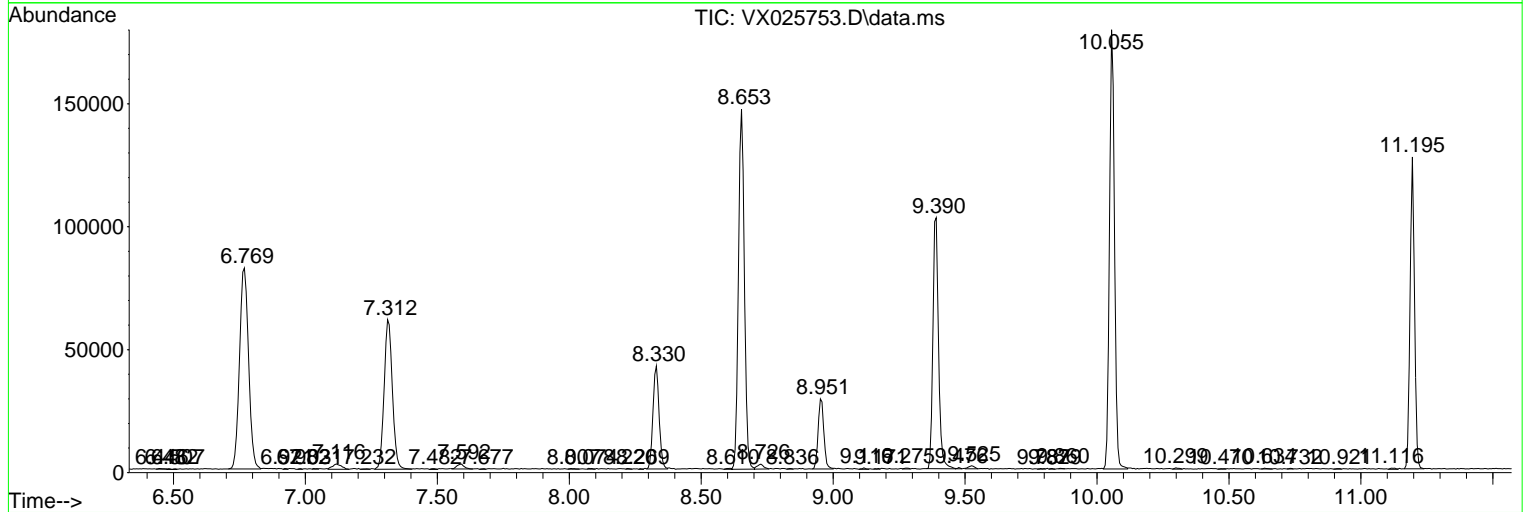
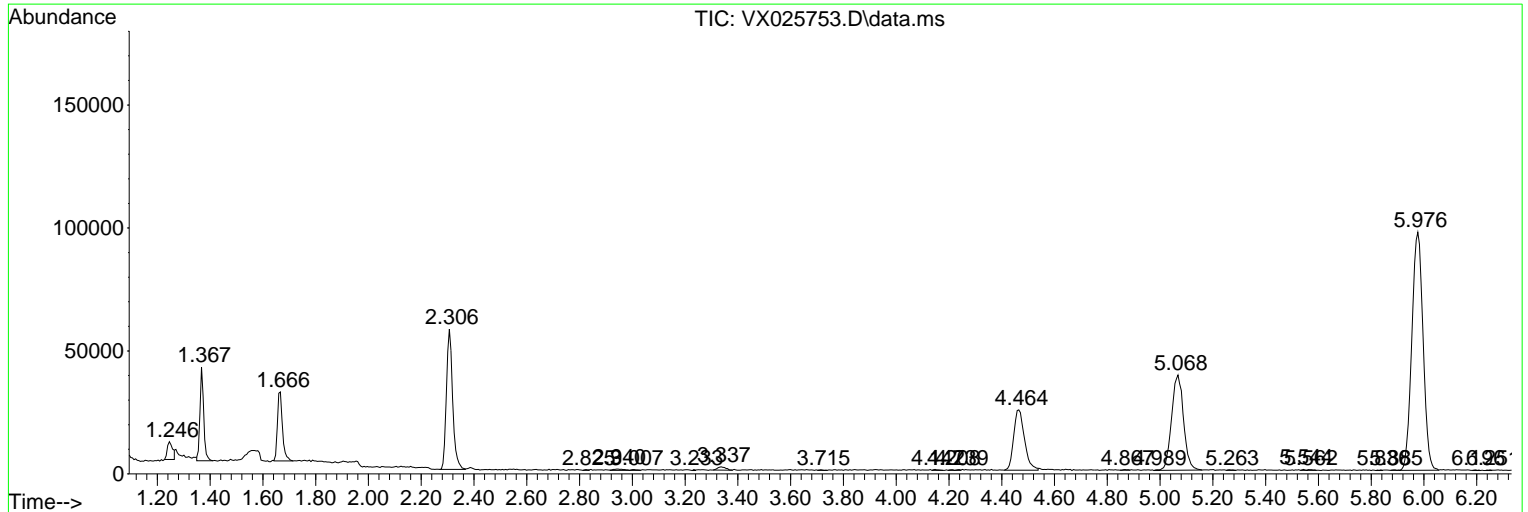
Sum of corrected areas: 2299090

Data Path : Z:\voasrv\HPCHEM1\MSVOA_X\Data\VX121121\
 Data File : VX025753.D
 Acq On : 11 Dec 2021 19:06
 Operator : JC/MD
 Sample : M5026-08
 Misc : 5.0mL/MSVOA_X/WATER
 ALS Vial : 24 Sample Multiplier: 1

Instrument :
 MSVOA_X
ClientSampleId :
 COD10

Quant Method : Z:\voasrv\HPCHEM1\MSVOA_X\Method\SFAMXLM112221WMA.M
 Quant Title : VOC Analysis

TIC Library : C:\Database\NIST20.L
 TIC Integration Parameters: LSCINT.P



Library Search Compound Report

Data Path : Z:\voasrv\HPCHEM1\MSVOA_X\Data\VX121121\
Data File : VX025753.D
Acq On : 11 Dec 2021 19:06
Operator : JC/MD
Sample : M5026-08
Misc : 5.0mL/MSVOA_X/WATER
ALS Vial : 24 Sample Multiplier: 1

Instrument :
MSVOA_X
ClientSampleId :
C0D10

Quant Method : Z:\voasrv\HPCHEM1\MSVOA_X\Method\SFAMXML112221WMA.M
Quant Title : VOC Analysis

TIC Library : C:\Database\NIST20.L
TIC Integration Parameters: LSCINT.P

No Library Search Compounds Detected

Data Path : Z:\voasrv\HPCHEM1\MSVOA_X\Data\VX121121\
Data File : VX025753.D
Acq On : 11 Dec 2021 19:06
Operator : JC/MD
Sample : M5026-08
Misc : 5.0mL/MSVOA_X/WATER
ALS Vial : 24 Sample Multiplier: 1

Instrument :
MSVOA_X
ClientSampleId :
C0D10

Quant Method : Z:\voasrv\HPCHEM1\MSVOA_X\Method\SFAMXLM112221WMA.M
Quant Title : VOC Analysis

TIC Library : C:\Database\NIST0.L
TIC Integration Parameters: LSCINT.P

TIC Top Hit name	RT	EstConc	Units	Response	--Internal Standard--			
					#	RT	Resp	Conc
