

Data Path : Z:\voasrv\HPCHEM1\MSVOA_X\Data\VX121123\
 Data File : VX039131.D
 Acq On : 11 Dec 2023 10:24
 Operator : JC/MD
 Sample : 05646-04MERE
 Misc : 3.39g/5.0mL/100uL/5.0mL/MSVOA_X/MEOH
 ALS Vial : 2 Sample Multiplier: 1

Instrument :
 MSVOA_X
 ClientSampleId :
 COAT8ME

Quant Time: Dec 12 03:51:49 2023
 Quant Method : Z:\voasrv\HPCHEM1\MSVOA_X\Method\SFAMXML120523WMA.M
 Quant Title : VOC Analysis
 QLast Update : Tue Dec 12 03:50:51 2023
 Response via : Initial Calibration

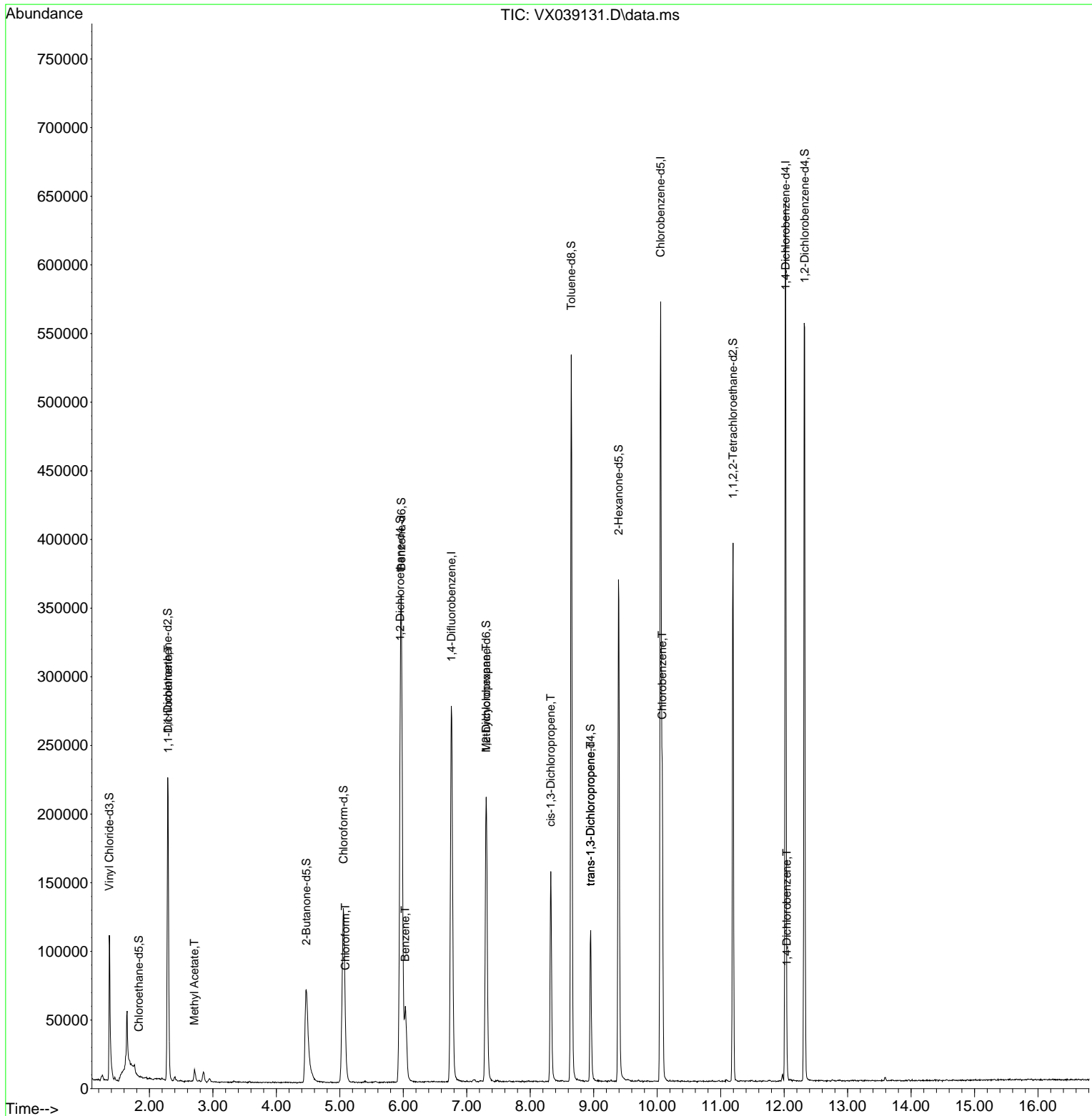
Compound	R.T.	QIon	Response	Conc	Units	Dev(Min)
Internal Standards						
1) 1,4-Difluorobenzene	6.757	114	280477	50.000	ug/L	0.00
28) Chlorobenzene-d5	10.055	117	254031	50.000	ug/L	0.00
58) 1,4-Dichlorobenzene-d4	12.024	152	122547	50.000	ug/L	0.00
System Monitoring Compounds						
4) Vinyl Chloride-d3	1.368	65	88599	40.274	ug/L	0.00
Spiked Amount	50.000	Range 60 - 135	Recovery =	80.540%		
7) Chloroethane-d5	1.831	69	188	0.116	ug/L	0.16
Spiked Amount	50.000	Range 70 - 130	Recovery =	0.240%#		
11) 1,1-Dichloroethene-d2	2.288	65	40763	42.212	ug/L	-0.02
Spiked Amount	50.000	Range 60 - 125	Recovery =	84.420%		
21) 2-Butanone-d5	4.471	46	163282	81.996	ug/L	0.03
Spiked Amount	100.000	Range 40 - 130	Recovery =	82.000%		
24) Chloroform-d	5.056	84	158610	40.728	ug/L	0.00
Spiked Amount	50.000	Range 70 - 125	Recovery =	81.460%		
26) 1,2-Dichloroethane-d4	5.952	65	112687	44.680	ug/L	0.00
Spiked Amount	50.000	Range 70 - 125	Recovery =	89.360%		
32) Benzene-d6	5.970	84	343887	43.864	ug/L	0.00
Spiked Amount	50.000	Range 70 - 125	Recovery =	87.720%		
36) 1,2-Dichloropropane-d6	7.306	67	111582	44.225	ug/L	0.00
Spiked Amount	50.000	Range 70 - 120	Recovery =	88.460%		
41) Toluene-d8	8.647	98	314022	44.199	ug/L	0.00
Spiked Amount	50.000	Range 80 - 120	Recovery =	88.400%		
43) trans-1,3-Dichloroprop...	8.952	79	54148	42.173	ug/L	0.00
Spiked Amount	50.000	Range 60 - 125	Recovery =	84.340%		
47) 2-Hexanone-d5	9.391	63	122739	81.450	ug/L	0.01
Spiked Amount	100.000	Range 45 - 130	Recovery =	81.450%		
56) 1,1,2,2-Tetrachloroeth...	11.195	84	155283	43.385	ug/L	0.00
Spiked Amount	50.000	Range 65 - 120	Recovery =	86.780%		
66) 1,2-Dichlorobenzene-d4	12.323	152	106576	46.010	ug/L	0.00
Spiked Amount	50.000	Range 80 - 120	Recovery =	92.020%		
Target Compounds						
12) 1,1-Dichloroethene	2.294	96	1024	0.567	ug/L #	1
15) Methyl Acetate	2.709	43	10018	3.664	ug/L	99
25) Chloroform	5.086	83	6278	1.672	ug/L	100
33) Benzene	6.031	78	64933	8.043	ug/L	100
35) Methylcyclohexane	7.306	83	25435	7.158	ug/L #	19
39) cis-1,3-Dichloropropene	8.324	75	3980	1.115	ug/L #	71
44) trans-1,3-Dichloropropene	8.952	75	2801	0.845	ug/L #	77
51) Chlorobenzene	10.079	112	87935	16.629	ug/L	97
65) 1,4-Dichlorobenzene	12.043	146	3472	0.894	ug/L	97

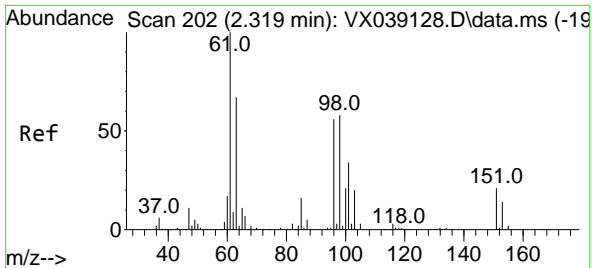
(#) = qualifier out of range (m) = manual integration (+) = signals summed

Data Path : Z:\voasrv\HPCHEM1\MSVOA_X\Data\VX121123\
 Data File : VX039131.D
 Acq On : 11 Dec 2023 10:24
 Operator : JC/MD
 Sample : 05646-04MERE
 Misc : 3.39g/5.0mL/100uL/5.0mL/MSVOA_X/MEOH
 ALS Vial : 2 Sample Multiplier: 1

Instrument :
 MSVOA_X
 ClientSampleId :
 COAT8ME

Quant Time: Dec 12 03:51:49 2023
 Quant Method : Z:\voasrv\HPCHEM1\MSVOA_X\Method\SFAMXML120523WMA.M
 Quant Title : VOC Analysis
 QLast Update : Tue Dec 12 03:50:51 2023
 Response via : Initial Calibration

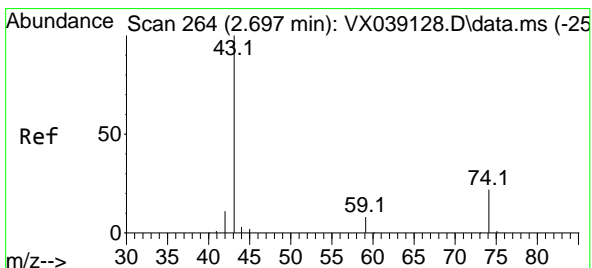
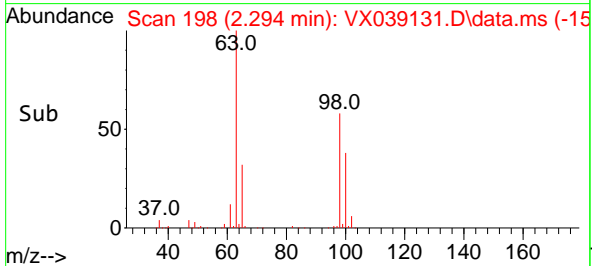
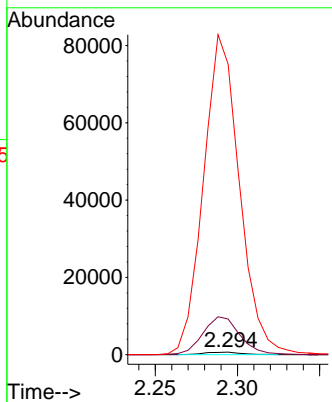
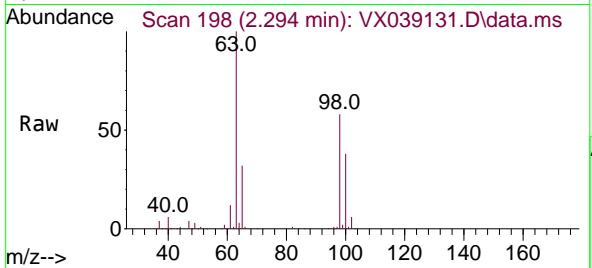




#12
 1,1-Dichloroethene
 Concen: 0.567 ug/L
 RT: 2.294 min Scan# 198
 Delta R.T. -0.025 min
 Lab File: VX039131.D
 Acq: 11 Dec 2023 10:24

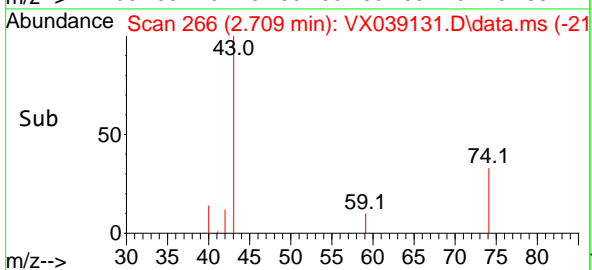
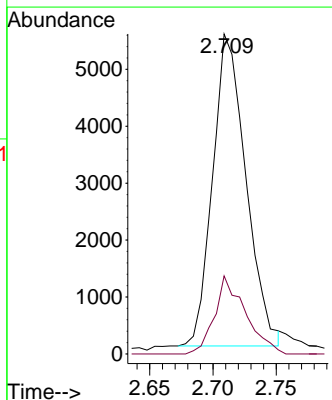
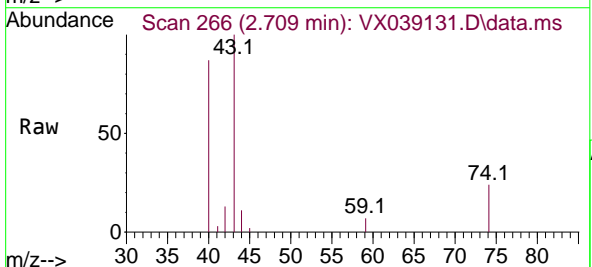
Instrument : MSVOA_X
 ClientSampleId : COAT8ME

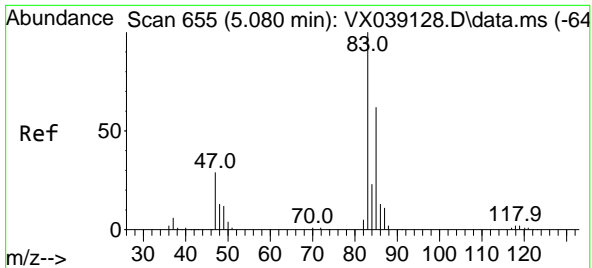
Tgt Ion: 96 Resp: 1024
 Ion Ratio Lower Upper
 96 100
 61 1414.6 128.0 237.6#
 63 11532.5 101.5 188.5#



#15
 Methyl Acetate
 Concen: 3.664 ug/L
 RT: 2.709 min Scan# 266
 Delta R.T. 0.012 min
 Lab File: VX039131.D
 Acq: 11 Dec 2023 10:24

Tgt Ion: 43 Resp: 10018
 Ion Ratio Lower Upper
 43 100
 74 23.3 18.2 27.4

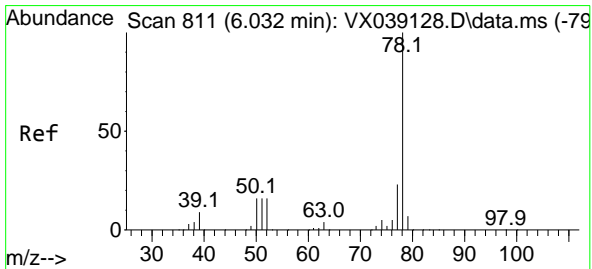
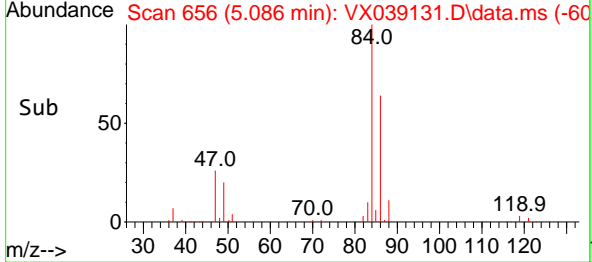
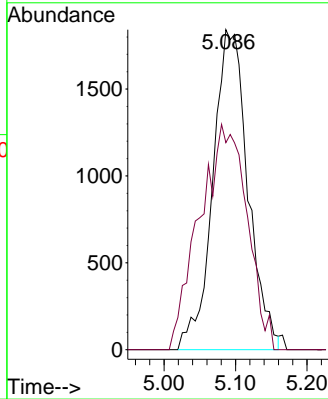
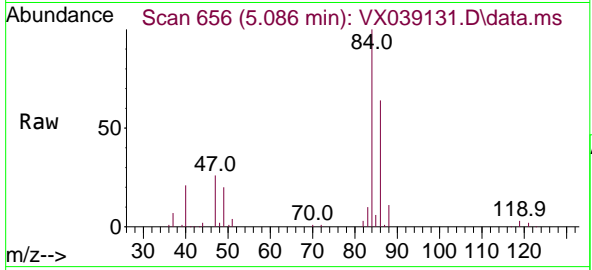




#25
 Chloroform
 Concen: 1.672 ug/L
 RT: 5.086 min Scan# 611
 Delta R.T. 0.006 min
 Lab File: VX039131.D
 Acq: 11 Dec 2023 10:24

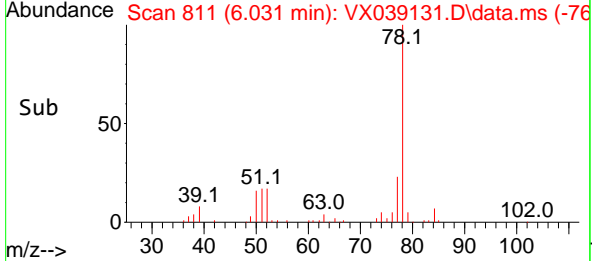
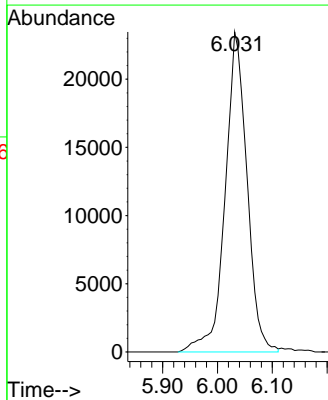
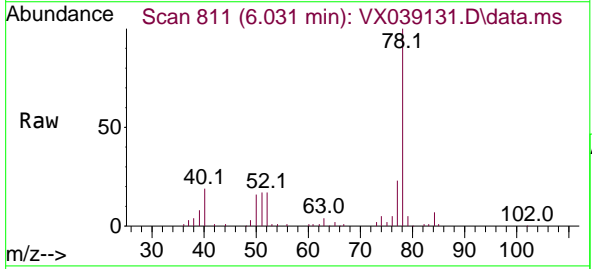
Instrument : MSVOA_X
 ClientSampleId : COAT8ME

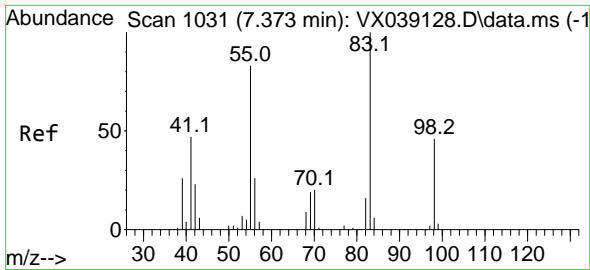
Tgt Ion: 83 Resp: 6278
 Ion Ratio Lower Upper
 83 100
 85 64.7 45.1 83.7



#33
 Benzene
 Concen: 8.043 ug/L
 RT: 6.031 min Scan# 811
 Delta R.T. -0.000 min
 Lab File: VX039131.D
 Acq: 11 Dec 2023 10:24

Tgt Ion: 78 Resp: 64933

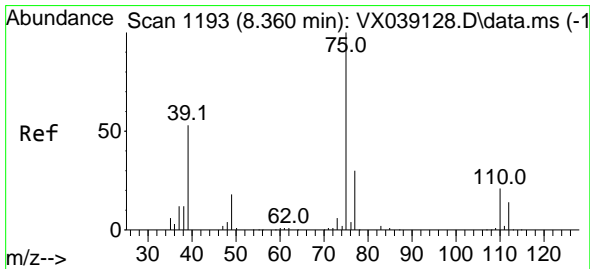
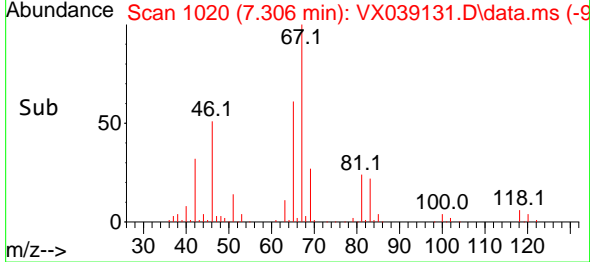
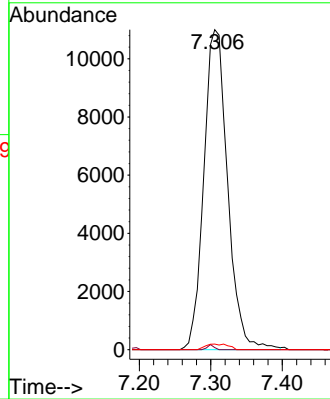
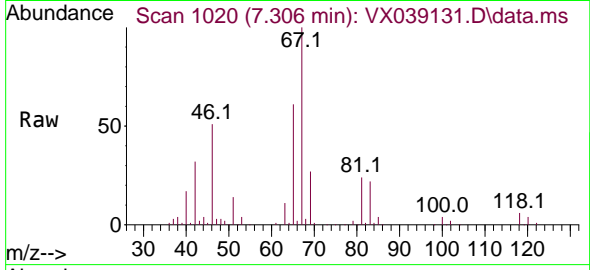




#35
 Methylcyclohexane
 Concen: 7.158 ug/L
 RT: 7.306 min Scan# 1187
 Delta R.T. -0.067 min
 Lab File: VX039131.D
 Acq: 11 Dec 2023 10:24

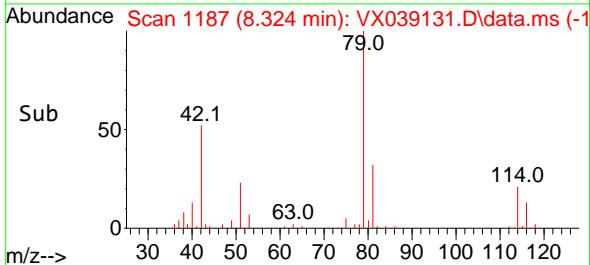
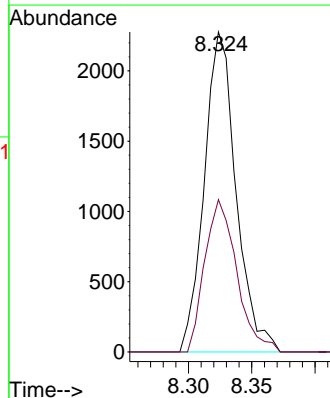
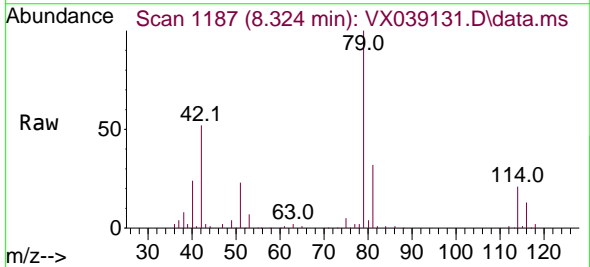
Instrument : MSVOA_X
 ClientSampleId : COAT8ME

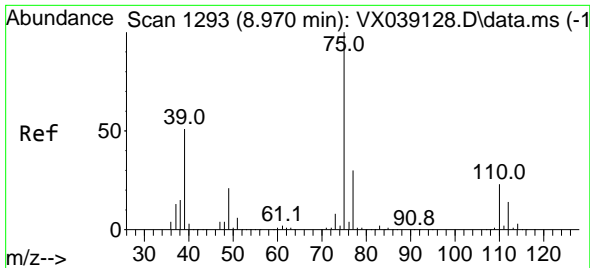
Tgt Ion: 83 Resp: 25435
 Ion Ratio Lower Upper
 83 100
 55 0.4 62.5 93.7#
 98 1.1 36.1 54.1#



#39
 cis-1,3-Dichloropropene
 Concen: 1.115 ug/L
 RT: 8.324 min Scan# 1187
 Delta R.T. -0.037 min
 Lab File: VX039131.D
 Acq: 11 Dec 2023 10:24

Tgt Ion: 75 Resp: 3980
 Ion Ratio Lower Upper
 75 100
 77 47.6 22.0 40.8#

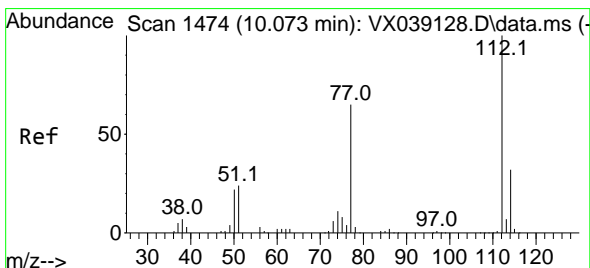
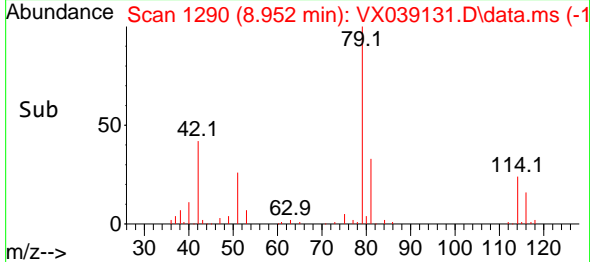
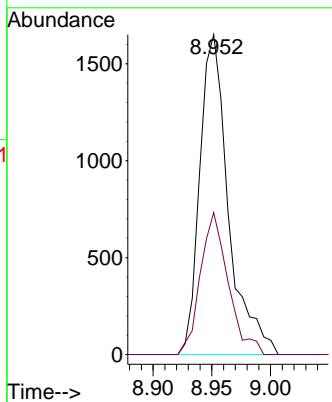
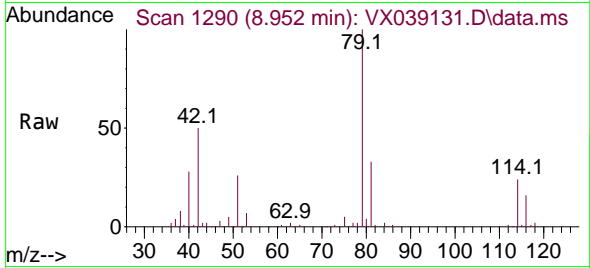




#44
 trans-1,3-Dichloropropene
 Concen: 0.845 ug/L
 RT: 8.952 min Scan# 111
 Delta R.T. -0.018 min
 Lab File: VX039131.D
 Acq: 11 Dec 2023 10:24

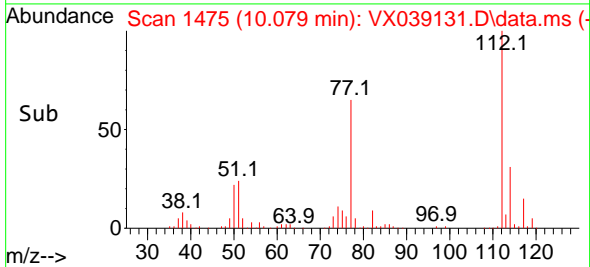
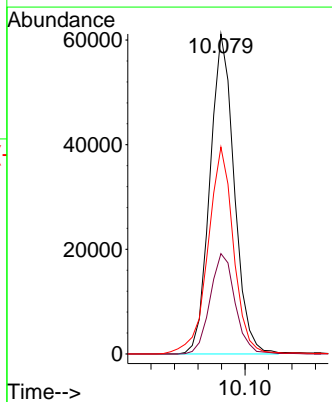
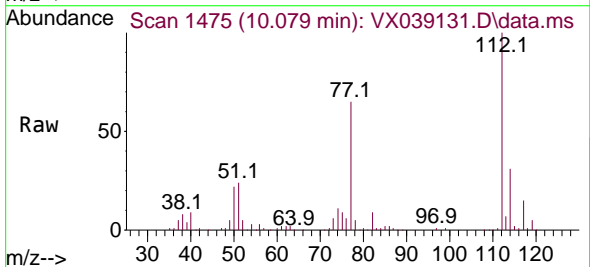
Instrument : MSVOA_X
 ClientSampleId : COAT8ME

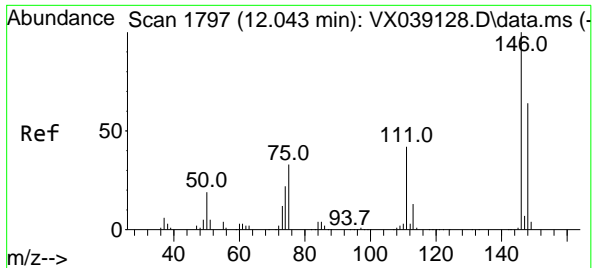
Tgt Ion: 75 Resp: 2801
 Ion Ratio Lower Upper
 75 100
 77 44.4 22.0 40.8#



#51
 Chlorobenzene
 Concen: 16.629 ug/L
 RT: 10.079 min Scan# 1475
 Delta R.T. 0.006 min
 Lab File: VX039131.D
 Acq: 11 Dec 2023 10:24

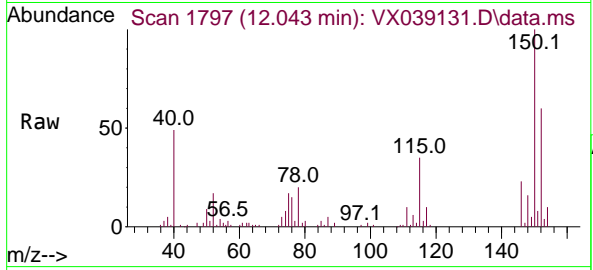
Tgt Ion:112 Resp: 87935
 Ion Ratio Lower Upper
 112 100
 114 31.4 21.8 40.4
 77 64.7 49.0 73.6





#65
 1,4-Dichlorobenzene
 Concen: 0.894 ug/L
 RT: 12.043 min Scan# 11
 Delta R.T. -0.000 min
 Lab File: VX039131.D
 Acq: 11 Dec 2023 10:24

Instrument :
 MSVOA_X
 ClientSampleId :
 COAT8ME



Tgt Ion:146 Resp: 3472

Ion	Ratio	Lower	Upper
146	100		
111	44.7	29.7	55.1
148	67.3	45.8	85.2

