

Data Path : Z:\VOASRV\HPCHEM1\MSVOA X\DATA\VX121218\
 Data File : VX006481.D
 Acq On : 13 Dec 2018 08:13
 Operator : JC/MD
 Sample : J6347-09
 Misc : 5.0mL/MSVOA X/WATER
 ALS Vial : 48 Sample Multiplier: 1

Instrument :
 MSVOA_X
 ClientSampleId :
 P001-SW001-02

Integration Parameters: RTEINT.P
 Integrator: RTE
 Smoothing : ON Filtering: 5
 Sampling : 1 Min Area: 3 % of largest Peak
 Start Thrs: 0.2 Max Peaks: 100
 Stop Thrs : 0 Peak Location: TOP

If leading or trailing edge < 100 prefer < Baseline drop else tangent >
 Peak separation: 5

Method : Z:\VOASRV\HPCHEM1\MSVOA_X\METHOD\82X112918W.M
 Title : SW846 8260

Signal : TIC

peak #	R.T. min	first scan	max scan	last scan	PK TY	peak height	corr. area	corr. % max.	% of total
1	1.623	65	77	80	rBV2	44531	115373	3.82%	0.706%
2	2.782	262	267	273	rBV2	20204	36653	1.21%	0.224%
3	4.397	524	532	540	rVB4	9951	30542	1.01%	0.187%
4	5.507	701	714	727	rBV	353270	1010910	33.45%	6.184%
5	5.665	729	740	753	rVV	639878	1758877	58.19%	10.760%
6	6.068	796	806	818	rBV	366312	947546	31.35%	5.797%
7	6.860	926	936	954	rBV	920354	2169146	71.77%	13.270%
8	8.713	1229	1240	1252	rBV	1963896	3022460	100.00%	18.490%
9	10.116	1461	1470	1480	rBV	1846963	2597300	85.93%	15.889%
10	11.140	1629	1638	1645	rBV	1554192	2068801	68.45%	12.656%
11	12.079	1785	1792	1800	rBV	2078723	2520302	83.39%	15.418%
12	14.694	2216	2221	2226	rBV	25361	32899	1.09%	0.201%
13	14.840	2238	2245	2251	rBV	23157	35959	1.19%	0.220%

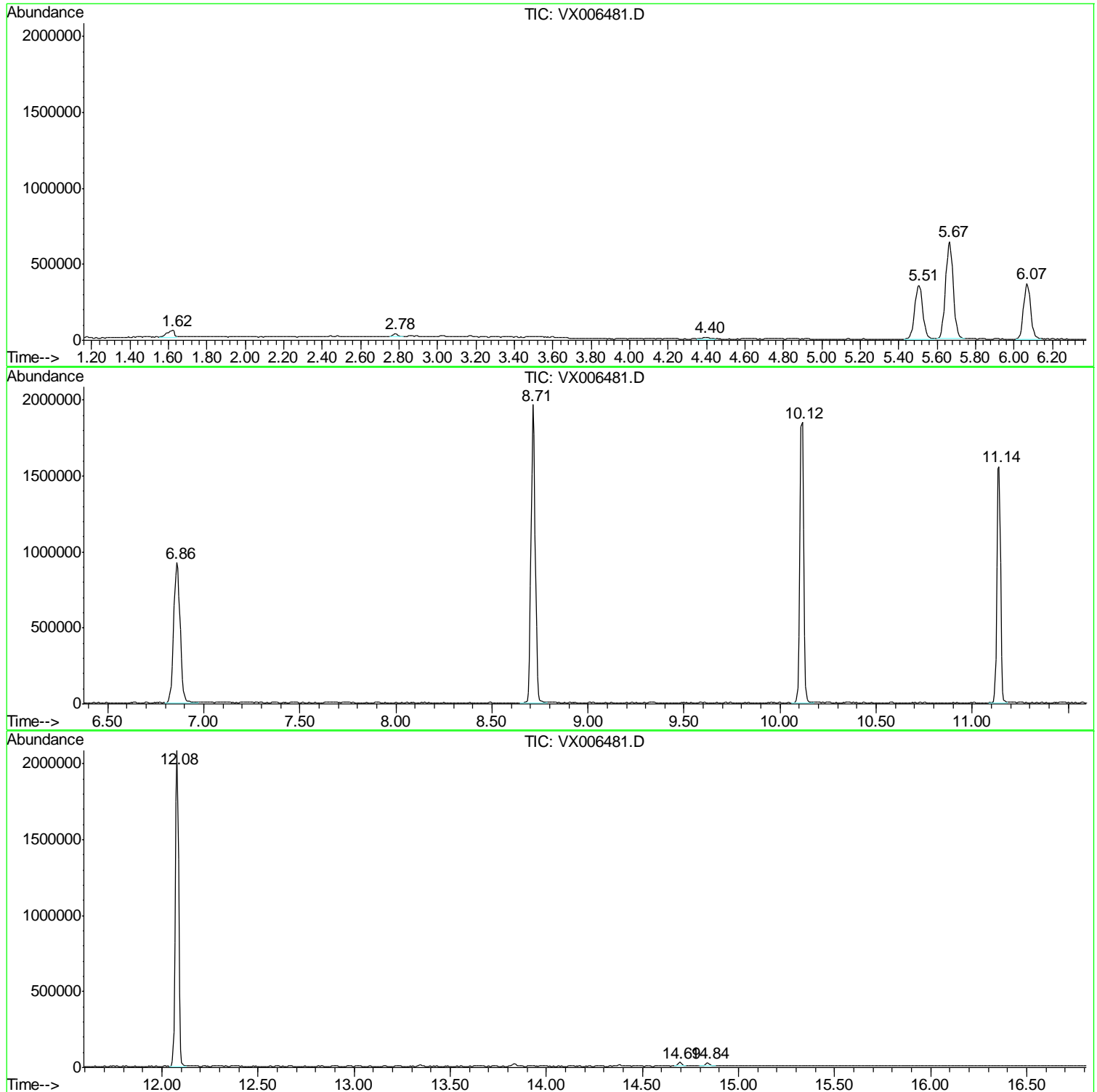
Sum of corrected areas: 16346768

Data Path : Z:\VOASRV\HPCHEM1\MSVOA X\DATA\VX121218\
Data File : VX006481.D
Acq On : 13 Dec 2018 08:13
Operator : JC/MD
Sample : J6347-09
Misc : 5.0mL/MSVOA X/WATER
ALS Vial : 48 Sample Multiplier: 1

Instrument :
MSVOA_X
ClientSampled :
P001-SW001-02

Quant Method : Z:\VOASRV\HPCHEM1\MSVOA_X\METHOD\82X112918W.M
Quant Title : SW846 8260

TIC Library : C:\DATABASE\NIST11.L
TIC Integration Parameters: LSCINT.P



Data Path : Z:\VOASRV\HPCHEM1\MSVOA_X\DATA\VX121218\
Data File : VX006481.D
Acq On : 13 Dec 2018 08:13
Operator : JC/MD
Sample : J6347-09
Misc : 5.0mL/MSVOA_X/WATER
ALS Vial : 48 Sample Multiplier: 1

Instrument :
MSVOA_X
ClientSampleId :
P001-SW001-02

Quant Method : Z:\VOASRV\HPCHEM1\MSVOA_X\METHOD\82X112918W.M
Quant Title : SW846 8260

TIC Library : C:\DATABASE\NIST11.L
TIC Integration Parameters: LSCINT.P

No Library Search Compounds Detected

Data Path : Z:\VOASRV\HPCHEM1\MSVOA_X\DATA\VX121218\
Data File : VX006481.D
Acq On : 13 Dec 2018 08:13
Operator : JC/MD
Sample : J6347-09
Misc : 5.0mL/MSVOA_X/WATER
ALS Vial : 48 Sample Multiplier: 1

Instrument :
MSVOA_X
ClientSampleId :
P001-SW001-02

Quant Method : Z:\VOASRV\HPCHEM1\MSVOA_X\METHOD\82X112918W.M
Quant Title : SW846 8260

TIC Library : C:\DATABASE\NIST11.L
TIC Integration Parameters: LSCINT.P

TIC Top Hit name	RT	EstConc	Units	Response	--Internal Standard--			
					#	RT	Resp	Conc
