

Data Path : Z:\VOASRV\HPCHEM1\MSVOA X\DATA\VX121219\
 Data File : VX013976.D
 Acq On : 12 Dec 2019 15:36
 Operator : JC/SP
 Sample : K6252-06
 Misc : 5.0mL/MSVOA X/WATER
 ALS Vial : 11 Sample Multiplier: 1

Instrument :
 MSVOA_X
 ClientSampleId :
 EB02-20191209

Quant Time: Dec 13 03:42:49 2019
 Quant Method : Z:\VOASRV\HPCHEM1\MSVOA_X\METHOD\82X112619W.M
 Quant Title : SW846 8260
 QLast Update : Tue Nov 26 15:53:00 2019
 Response via : Initial Calibration

Internal Standards	R.T.	QIon	Response	Conc	Units	Dev(Min)
1) Pentafluorobenzene	5.65	168	565342	50.00	ug/l	0.00
34) 1,4-Difluorobenzene	6.85	114	867524	50.00	ug/l	0.00
63) Chlorobenzene-d5	10.11	117	774837	50.00	ug/l	0.00
72) 1,4-Dichlorobenzene-d4	12.07	152	330620	50.00	ug/l	0.00

System Monitoring Compounds

33) 1,2-Dichloroethane-d4	6.05	65	318652	48.56	ug/l	0.00
Spiked Amount	50.000		Recovery	=	97.12%	
35) Dibromofluoromethane	5.49	113	253989	47.36	ug/l	0.00
Spiked Amount	50.000		Recovery	=	94.72%	
50) Toluene-d8	8.71	98	1025838	49.09	ug/l	0.00
Spiked Amount	50.000		Recovery	=	98.18%	
62) 4-Bromofluorobenzene	11.14	95	334377	44.38	ug/l	0.00
Spiked Amount	50.000		Recovery	=	88.76%	

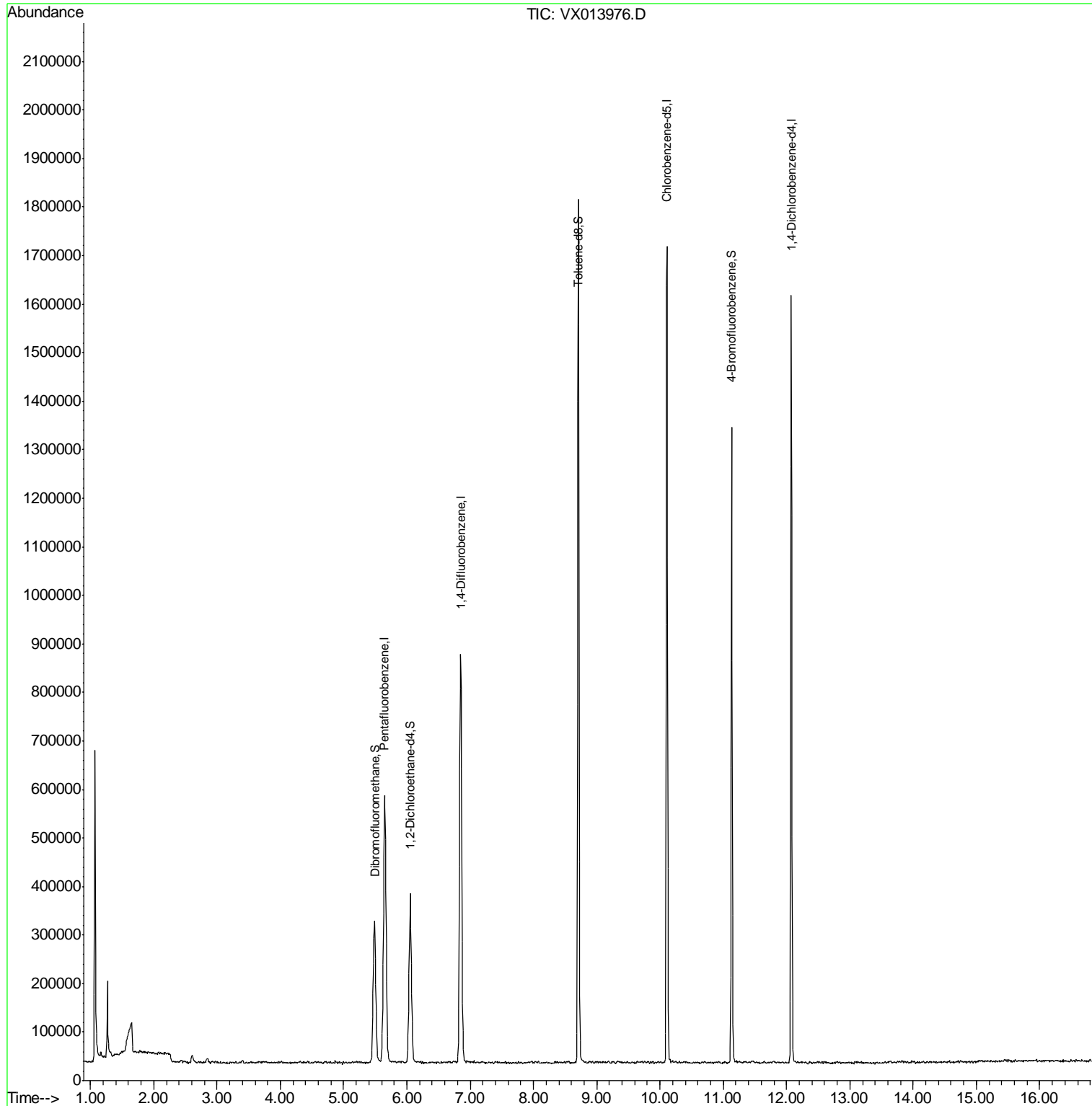
Target Compounds Qvalue

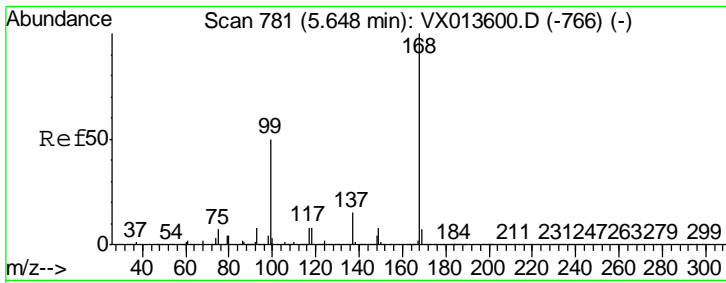
(#) = qualifier out of range (m) = manual integration (+) = signals summed

Data Path : Z:\VOASRV\HPCHEM1\MSVOA X\DATA\VX121219\
Data File : VX013976.D
Acq On : 12 Dec 2019 15:36
Operator : JC/SP
Sample : K6252-06
Misc : 5.0mL/MSVOA X/WATER
ALS Vial : 11 Sample Multiplier: 1

Instrument :
MSVOA_X
ClientSampled :
EB02-20191209

Quant Time: Dec 13 03:42:49 2019
Quant Method : Z:\VOASRV\HPCHEM1\MSVOA_X\METHOD\82X112619W.M
Quant Title : SW846 8260
QLast Update : Tue Nov 26 15:53:00 2019
Response via : Initial Calibration

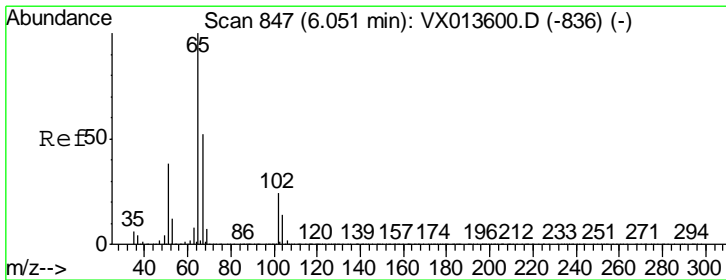
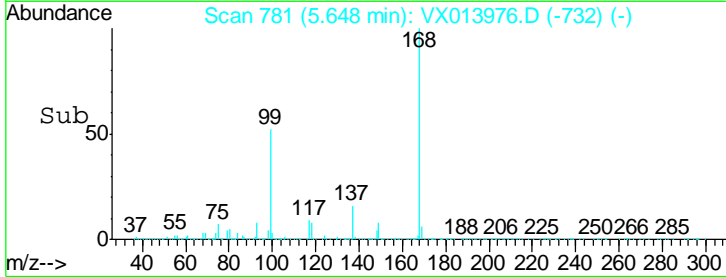
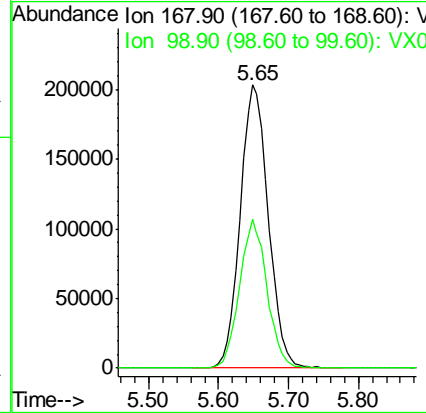
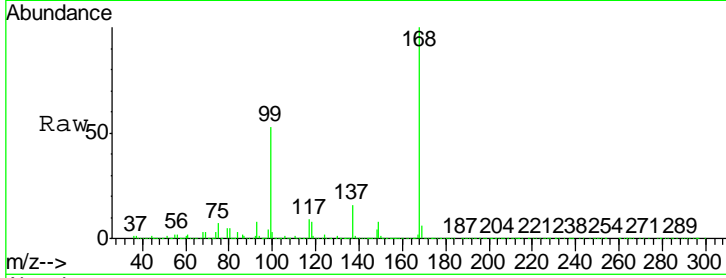




#1
 Pentafluorobenzene
 Concen: 50.000 ug/l
 RT: 5.65 min Scan# 781
 Delta R.T. -0.00 min
 Lab File: VX013976.D
 Acq: 12 Dec 2019 15:36

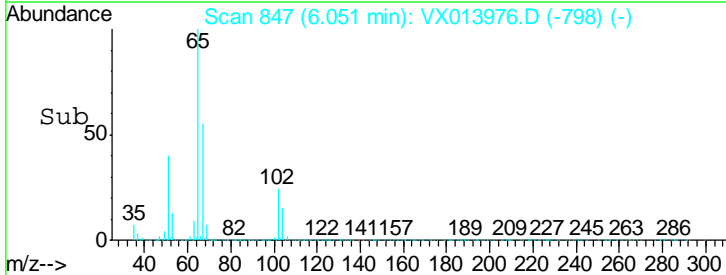
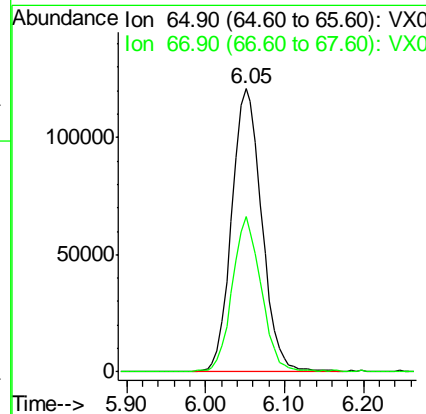
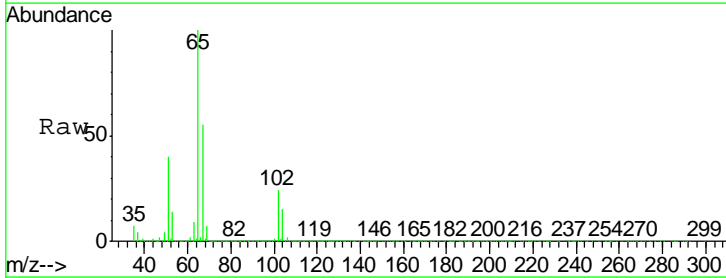
Instrument : MSVOA_X
 ClientSampled : EB02-20191209

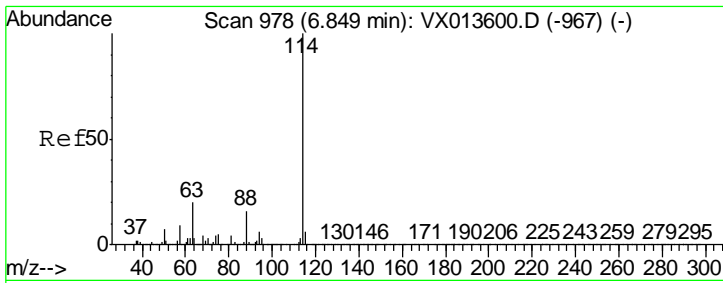
Tgt Ion	Resp	Lower	Upper
168	100		
99	52.5	39.8	59.8



#33
 1,2-Dichloroethane-d4
 Concen: 48.558 ug/l
 RT: 6.05 min Scan# 847
 Delta R.T. -0.00 min
 Lab File: VX013976.D
 Acq: 12 Dec 2019 15:36

Tgt Ion	Resp	Lower	Upper
65	100		
67	52.6	0.0	104.4

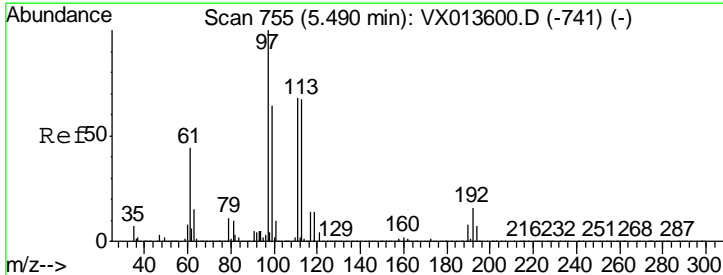
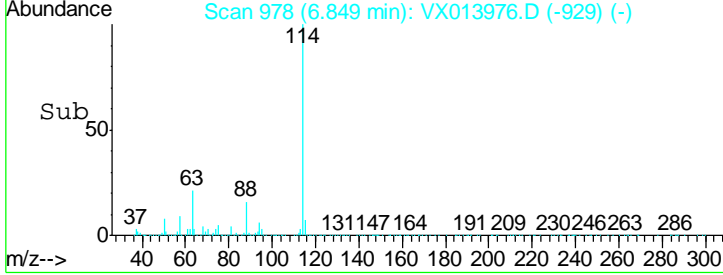
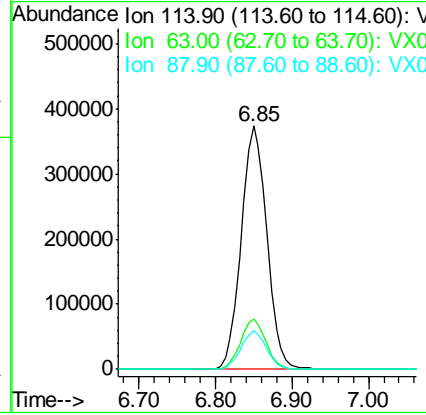
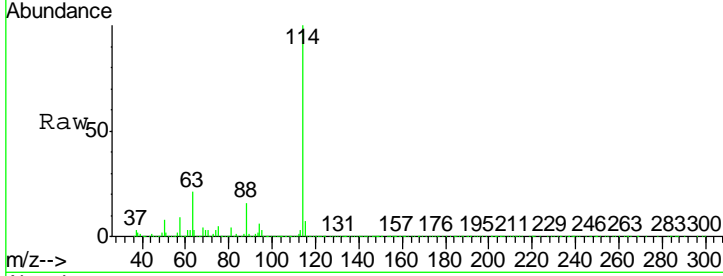




#34
 1,4-Difluorobenzene
 Concen: 50.000 ug/l
 RT: 6.85 min Scan# 978
 Delta R.T. -0.00 min
 Lab File: VX013976.D
 Acq: 12 Dec 2019 15:36

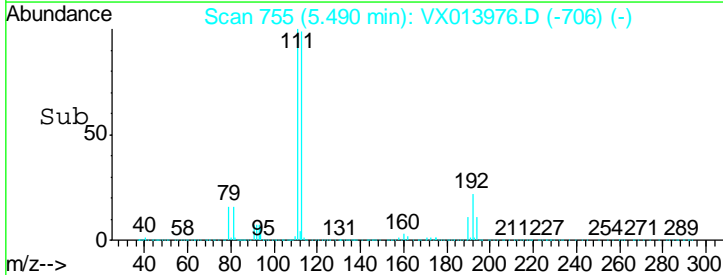
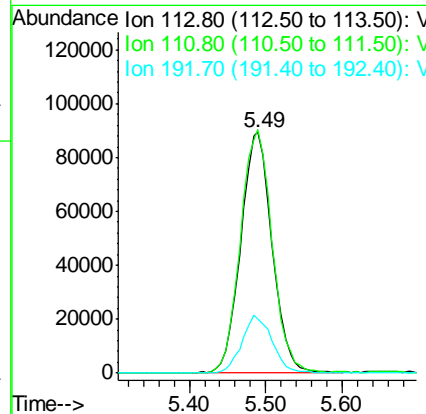
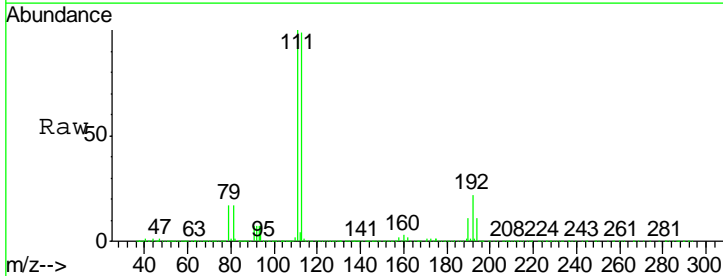
Instrument : MSVOA_X
 ClientSampleID : EB02-20191209

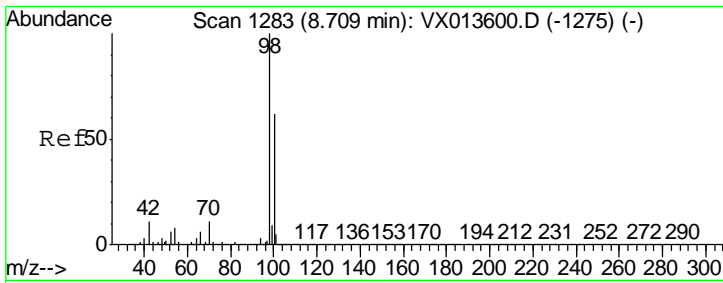
Tgt Ion	Resp	Lower	Upper
114	100		
63	20.6	0.0	39.6
88	16.1	0.0	31.4



#35
 Dibromofluoromethane
 Concen: 47.358 ug/l
 RT: 5.49 min Scan# 755
 Delta R.T. -0.00 min
 Lab File: VX013976.D
 Acq: 12 Dec 2019 15:36

Tgt Ion	Resp	Lower	Upper
113	100		
111	101.9	83.6	125.4
192	22.8	19.2	28.8

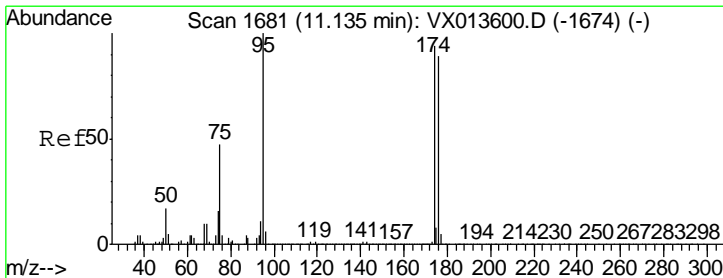
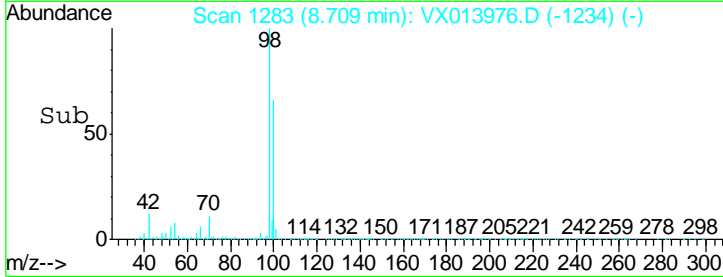
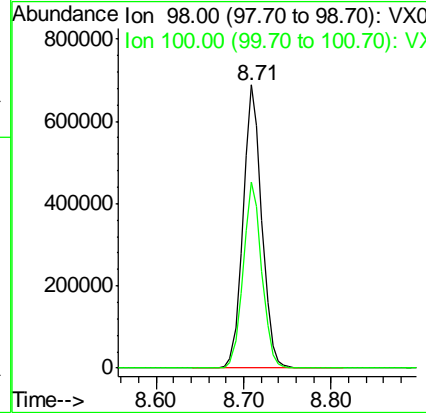
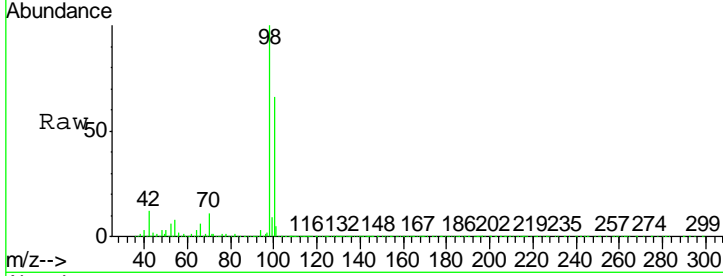




#50
Toluene-d8
Concen: 49.094 ug/l
RT: 8.71 min Scan# 1283
Delta R.T. -0.00 min
Lab File: VX013976.D
Acq: 12 Dec 2019 15:36

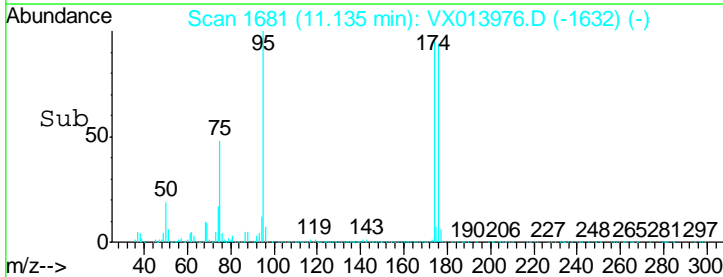
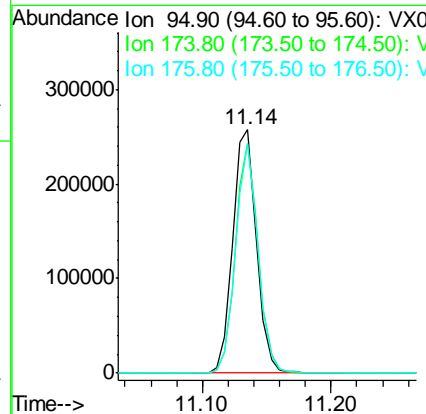
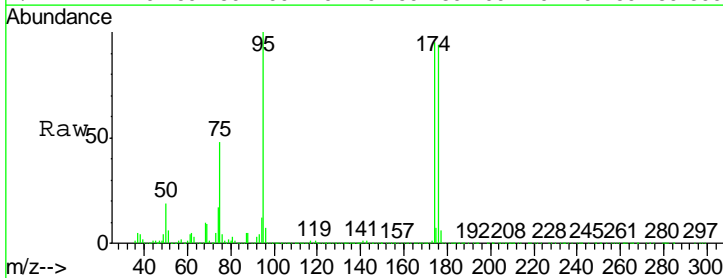
Instrument :
MSVOA_X
ClientSampleId :
EB02-20191209

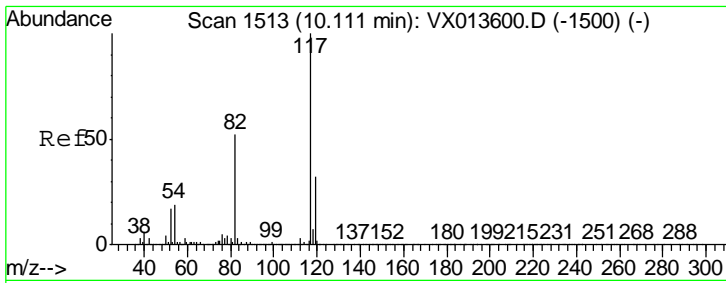
Tgt Ion: 98 Resp: 1025838
Ion Ratio Lower Upper
98 100
100 65.4 53.1 79.7



#62
4-Bromofluorobenzene
Concen: 44.377 ug/l
RT: 11.14 min Scan# 1681
Delta R.T. -0.00 min
Lab File: VX013976.D
Acq: 12 Dec 2019 15:36

Tgt Ion: 95 Resp: 334377
Ion Ratio Lower Upper
95 100
174 90.1 0.0 180.0
176 88.5 0.0 173.6

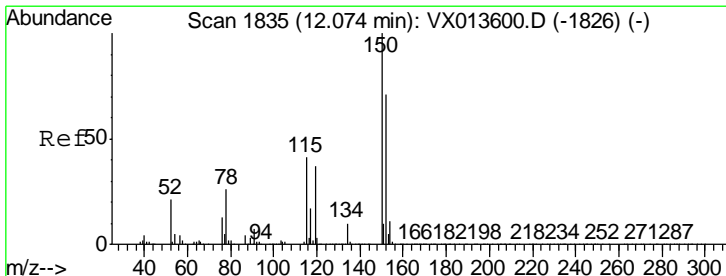
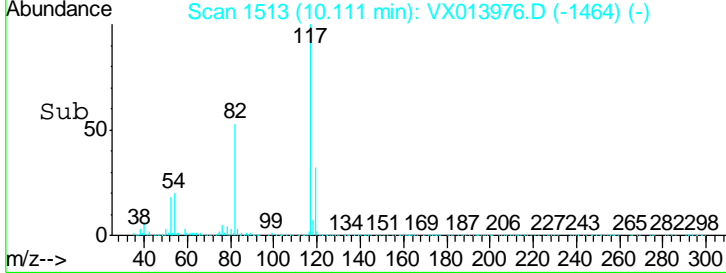
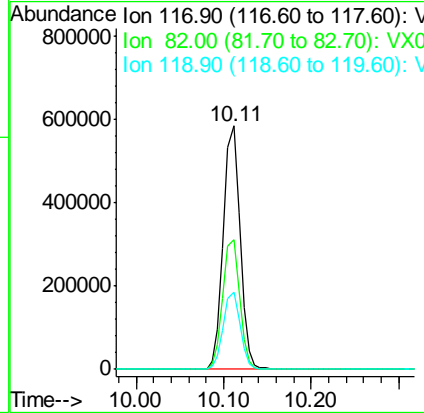
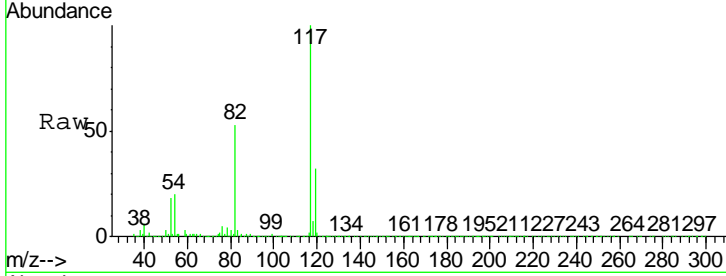




#63
 Chlorobenzene-d5
 Concen: 50.000 ug/l
 RT: 10.11 min Scan# 1513
 Delta R.T. -0.00 min
 Lab File: VX013976.D
 Acq: 12 Dec 2019 15:36

Instrument : MSVOA_X
 ClientSampleId : EB02-20191209

Tgt Ion	Resp	Lower	Upper
117	100		
82	53.3	41.8	62.8
119	31.7	25.8	38.8



#72
 1,4-Dichlorobenzene-d4
 Concen: 50.000 ug/l
 RT: 12.07 min Scan# 1835
 Delta R.T. -0.00 min
 Lab File: VX013976.D
 Acq: 12 Dec 2019 15:36

Tgt Ion	Resp	Lower	Upper
152	100		
115	56.2	38.4	115.1
150	154.4	0.0	346.8

