

Data Path : Z:\voasrv\HPCHEM1\MSVOA\_X\Data\VX121223\  
 Data File : VX039171.D  
 Acq On : 12 Dec 2023 17:20  
 Operator : JC/MD  
 Sample : 05757-01  
 Misc : 5.0mL/MSVOA\_X/WATER  
 ALS Vial : 19 Sample Multiplier: 1

Instrument :  
 MSVOA\_X  
 ClientSampleId :  
 OF-1

Quant Time: Dec 13 04:18:44 2023  
 Quant Method : Z:\voasrv\HPCHEM1\MSVOA\_X\Method\82X111623W.M  
 Quant Title : SW846 8260  
 QLast Update : Thu Nov 16 22:59:22 2023  
 Response via : Initial Calibration

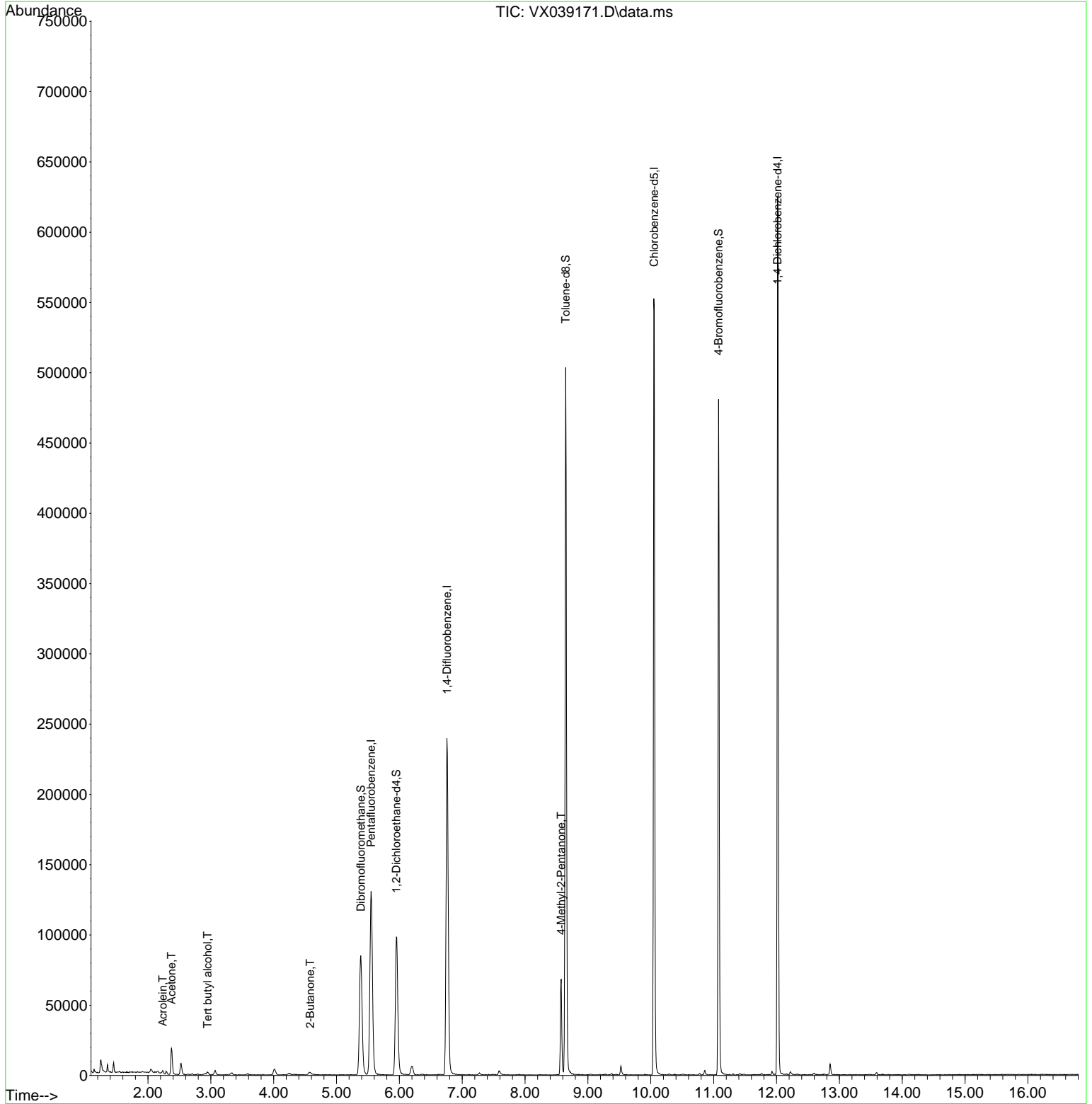
Compound	R.T.	QIon	Response	Conc	Units	Dev(Min)
-----						
Internal Standards						
1) Pentafluorobenzene	5.550	168	112458	50.000	ug/l	0.00
34) 1,4-Difluorobenzene	6.757	114	231070	50.000	ug/l	0.00
63) Chlorobenzene-d5	10.055	117	237592	50.000	ug/l	0.00
72) 1,4-Dichlorobenzene-d4	12.018	152	118356	50.000	ug/l	0.00
System Monitoring Compounds						
33) 1,2-Dichloroethane-d4	5.952	65	98833	54.541	ug/l	0.00
Spiked Amount	50.000	Range	78 - 117	Recovery	=	109.080%
35) Dibromofluoromethane	5.385	113	75257	45.095	ug/l	0.00
Spiked Amount	50.000	Range	75 - 124	Recovery	=	90.200%
50) Toluene-d8	8.647	98	290751	45.536	ug/l	0.00
Spiked Amount	50.000	Range	92 - 112	Recovery	=	91.080%#
62) 4-Bromofluorobenzene	11.079	95	130799	51.174	ug/l	0.00
Spiked Amount	50.000	Range	83 - 123	Recovery	=	102.340%
Target Compounds						
					Qvalue	
11) Tert butyl alcohol	2.947	59	2278	4.520	ug/l #	93
13) Acrolein	2.233	56	1492	5.595	ug/l	90
16) Acetone	2.374	43	20322	21.067	ug/l	96
25) 2-Butanone	4.580	43	3961	2.532	ug/l #	79
51) 4-Methyl-2-Pentanone	8.574	43	41580	13.065	ug/l	98
-----						

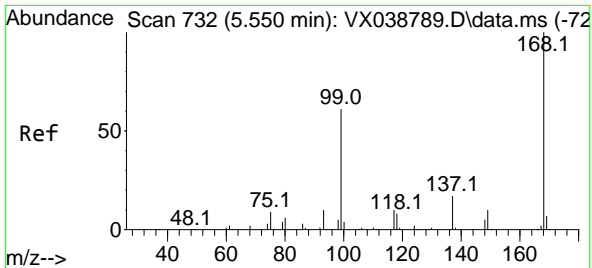
(#) = qualifier out of range (m) = manual integration (+) = signals summed

Data Path : Z:\voasrv\HPCHEM1\MSVOA\_X\Data\VX121223\  
 Data File : VX039171.D  
 Acq On : 12 Dec 2023 17:20  
 Operator : JC/MD  
 Sample : 05757-01  
 Misc : 5.0mL/MSVOA\_X/WATER  
 ALS Vial : 19 Sample Multiplier: 1

Instrument :  
 MSVOA\_X  
 ClientSampleId :  
 OF-1

Quant Time: Dec 13 04:18:44 2023  
 Quant Method : Z:\voasrv\HPCHEM1\MSVOA\_X\Method\82X111623W.M  
 Quant Title : SW846 8260  
 QLast Update : Thu Nov 16 22:59:22 2023  
 Response via : Initial Calibration

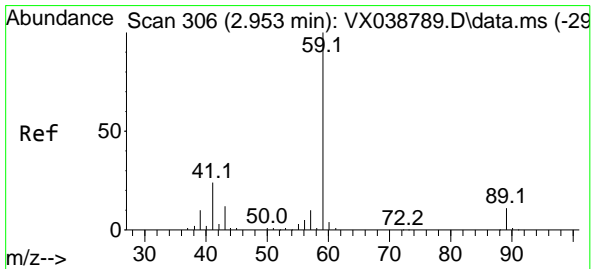
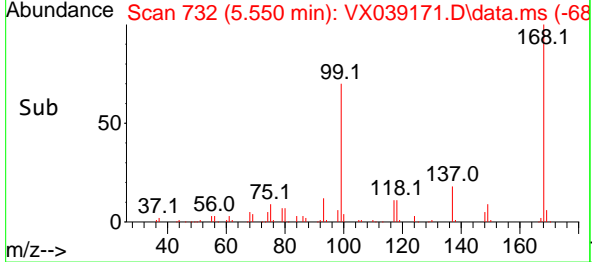
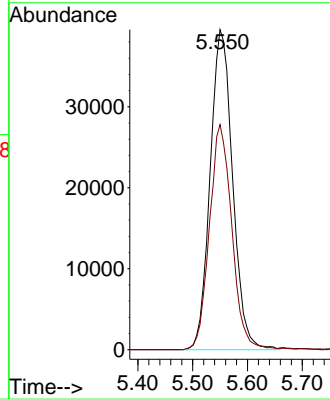
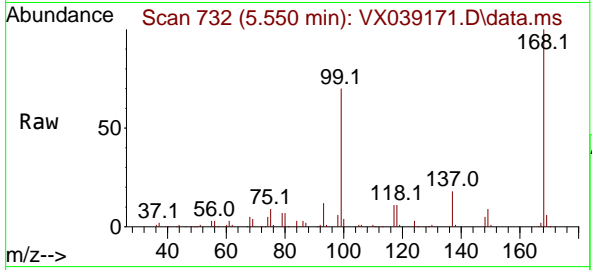




#1  
 Pentafluorobenzene  
 Concen: 50.000 ug/l  
 RT: 5.550 min Scan# 71  
 Delta R.T. -0.000 min  
 Lab File: VX039171.D  
 Acq: 12 Dec 2023 17:20

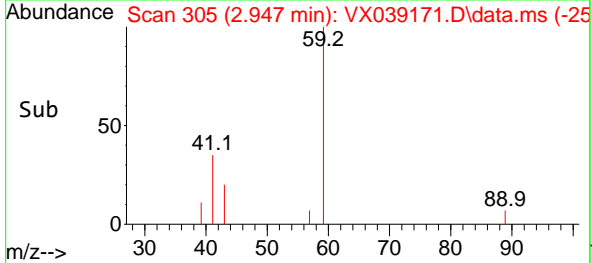
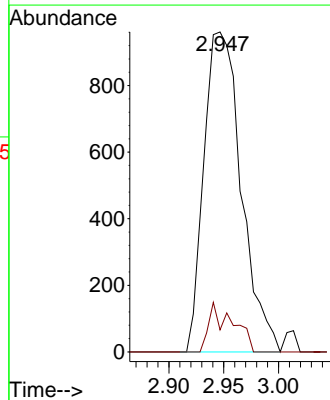
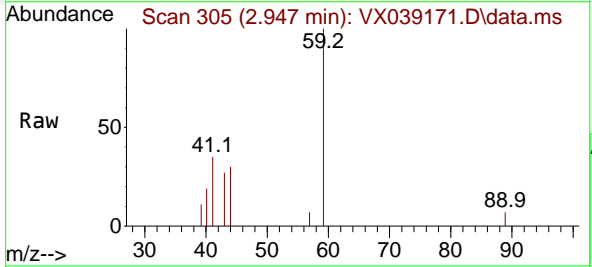
Instrument : MSVOA\_X  
 ClientSampleId : OF-1

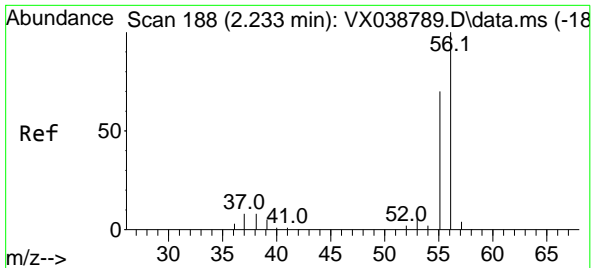
Tgt Ion:168 Resp: 112458  
 Ion Ratio Lower Upper  
 168 100  
 99 70.4 56.6 85.0



#11  
 Tert butyl alcohol  
 Concen: 4.520 ug/l  
 RT: 2.947 min Scan# 305  
 Delta R.T. -0.006 min  
 Lab File: VX039171.D  
 Acq: 12 Dec 2023 17:20

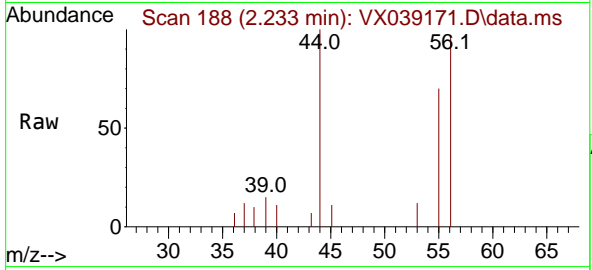
Tgt Ion: 59 Resp: 2278  
 Ion Ratio Lower Upper  
 59 100  
 57 9.9 6.0 9.0#



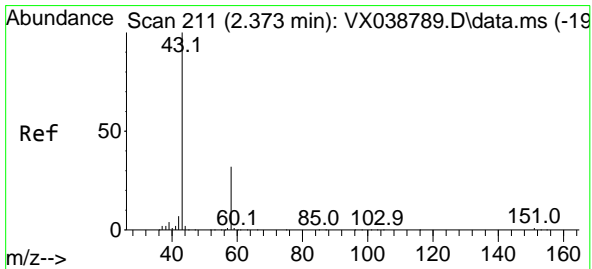
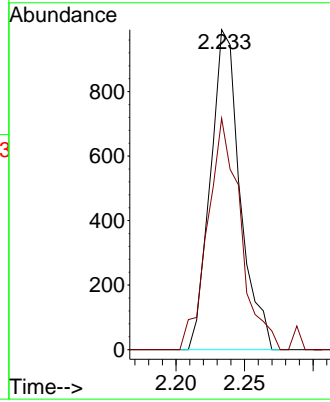
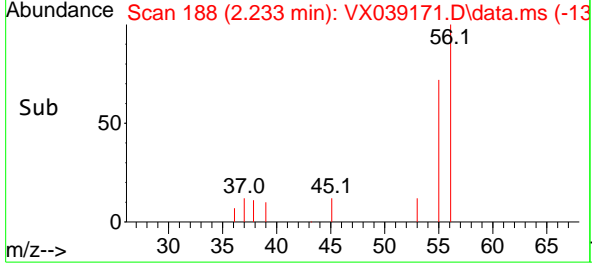


#13  
 Acrolein  
 Concen: 5.595 ug/l  
 RT: 2.233 min Scan# 118  
 Delta R.T. 0.000 min  
 Lab File: VX039171.D  
 Acq: 12 Dec 2023 17:20

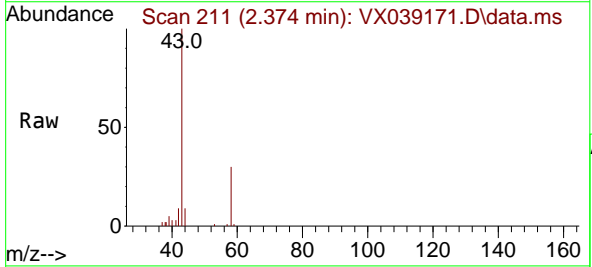
Instrument : MSVOA\_X  
 ClientSampleId : OF-1



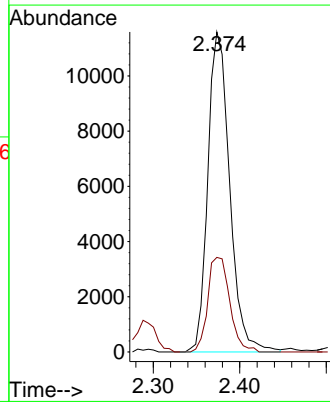
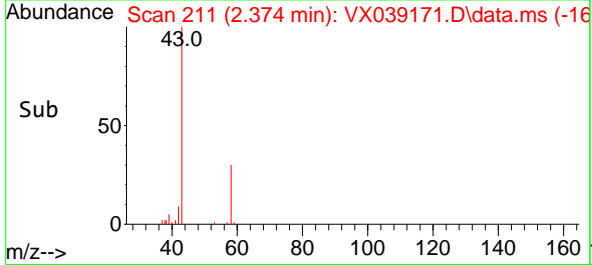
Tgt Ion: 56 Resp: 1492  
 Ion Ratio Lower Upper  
 56 100  
 55 80.0 57.1 85.7

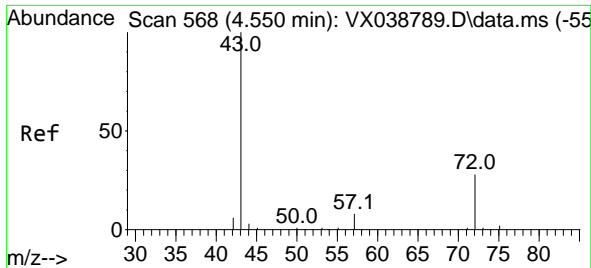


#16  
 Acetone  
 Concen: 21.067 ug/l  
 RT: 2.374 min Scan# 211  
 Delta R.T. 0.000 min  
 Lab File: VX039171.D  
 Acq: 12 Dec 2023 17:20



Tgt Ion: 43 Resp: 20322  
 Ion Ratio Lower Upper  
 43 100  
 58 29.5 21.9 32.9

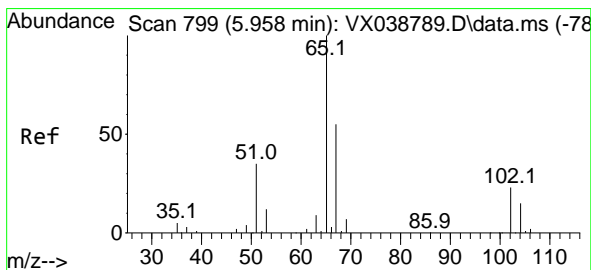
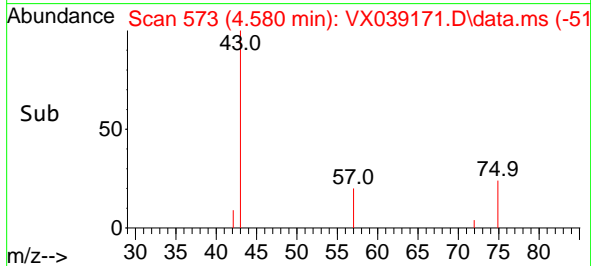
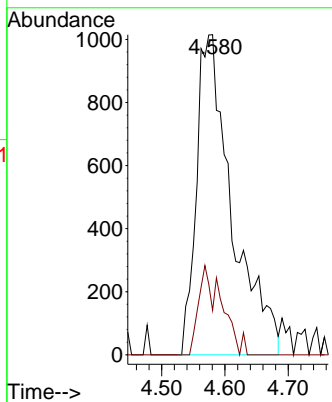
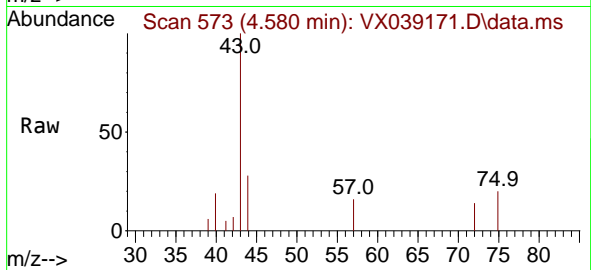




#25  
 2-Butanone  
 Concen: 2.532 ug/l  
 RT: 4.580 min Scan# 51  
 Delta R.T. 0.031 min  
 Lab File: VX039171.D  
 Acq: 12 Dec 2023 17:20

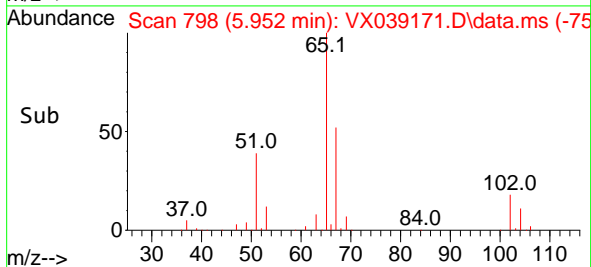
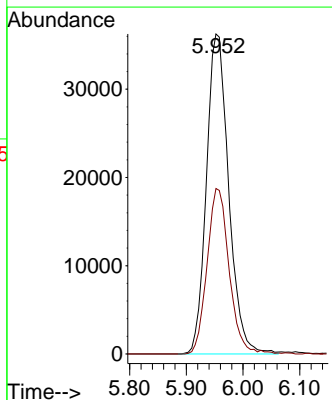
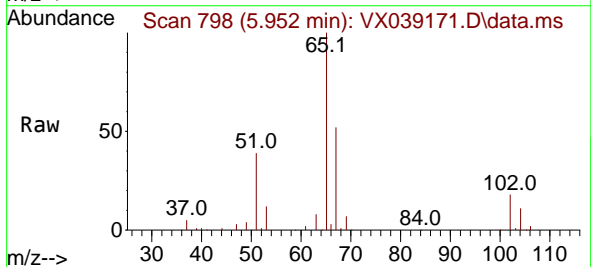
Instrument :  
 MSVOA\_X  
 ClientSampleId :  
 OF-1

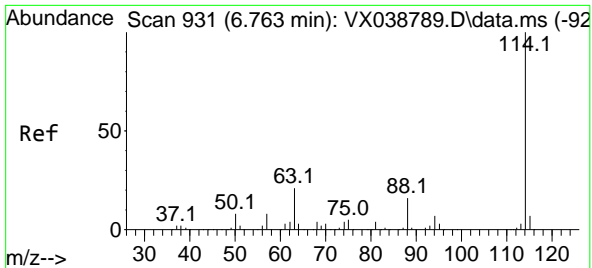
Tgt Ion: 43 Resp: 3961  
 Ion Ratio Lower Upper  
 43 100  
 72 13.9 19.4 29.2#



#33  
 1,2-Dichloroethane-d4  
 Concen: 54.541 ug/l  
 RT: 5.952 min Scan# 798  
 Delta R.T. -0.006 min  
 Lab File: VX039171.D  
 Acq: 12 Dec 2023 17:20

Tgt Ion: 65 Resp: 98833  
 Ion Ratio Lower Upper  
 65 100  
 67 51.2 0.0 100.2



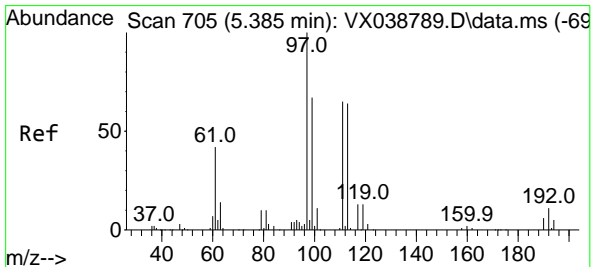
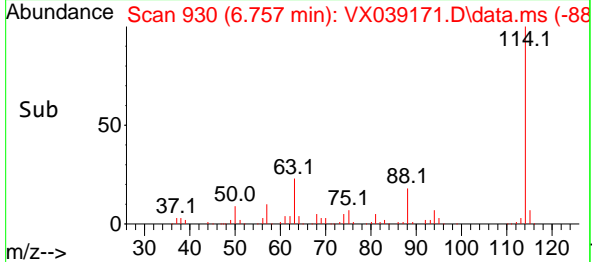
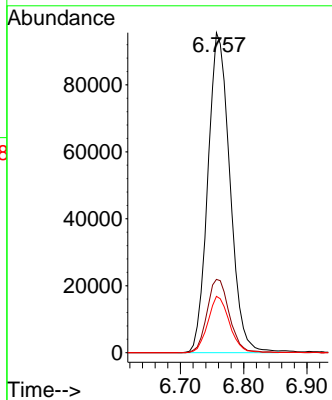
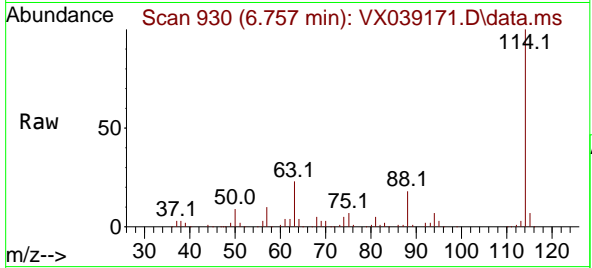


#34  
 1,4-Difluorobenzene  
 Concen: 50.000 ug/l  
 RT: 6.757 min Scan# 911  
 Delta R.T. -0.006 min  
 Lab File: VX039171.D  
 Acq: 12 Dec 2023 17:20

Instrument : MSVOA\_X  
 ClientSampleId : OF-1

Tgt Ion:114 Resp: 231070

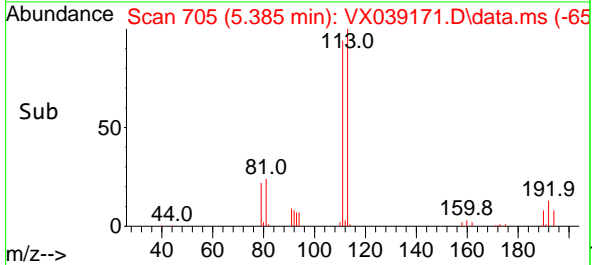
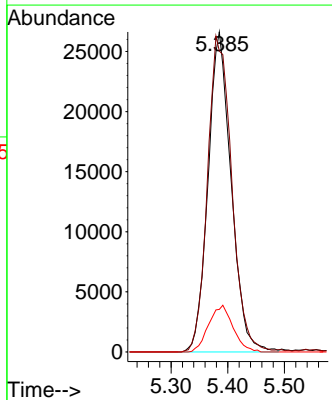
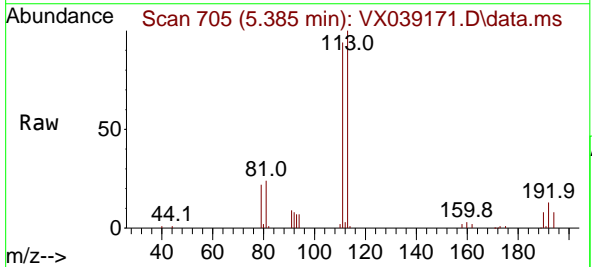
Ion	Ratio	Lower	Upper
114	100		
63	22.9	0.0	45.0
88	17.6	0.0	36.6

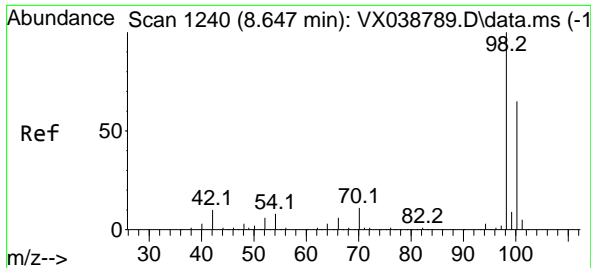


#35  
 Dibromofluoromethane  
 Concen: 45.095 ug/l  
 RT: 5.385 min Scan# 705  
 Delta R.T. 0.000 min  
 Lab File: VX039171.D  
 Acq: 12 Dec 2023 17:20

Tgt Ion:113 Resp: 75257

Ion	Ratio	Lower	Upper
113	100		
111	103.2	82.9	124.3
192	15.4	13.3	19.9

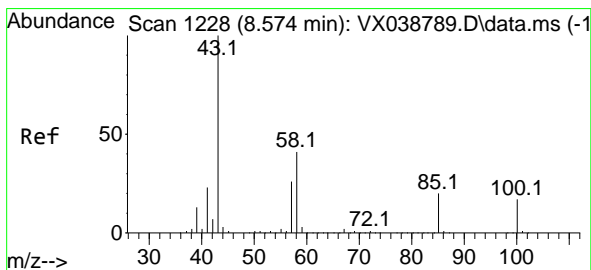
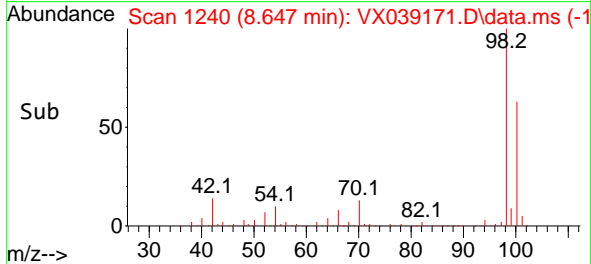
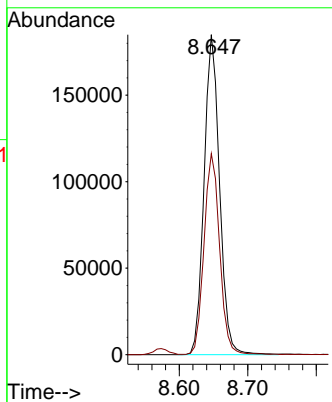
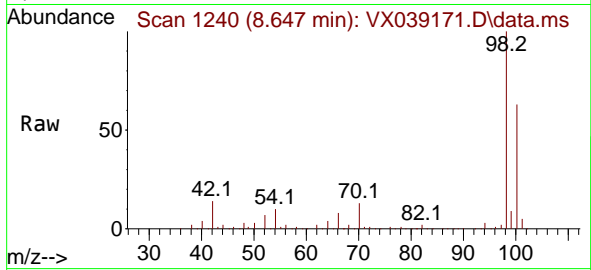




#50  
 Toluene-d8  
 Concen: 45.536 ug/l  
 RT: 8.647 min Scan# 11  
 Delta R.T. 0.000 min  
 Lab File: VX039171.D  
 Acq: 12 Dec 2023 17:20

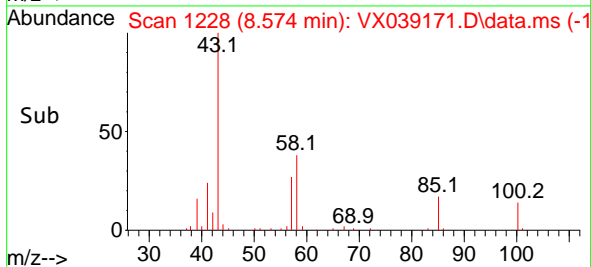
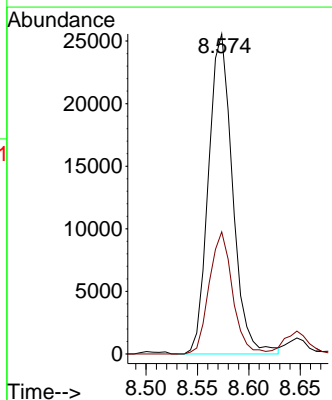
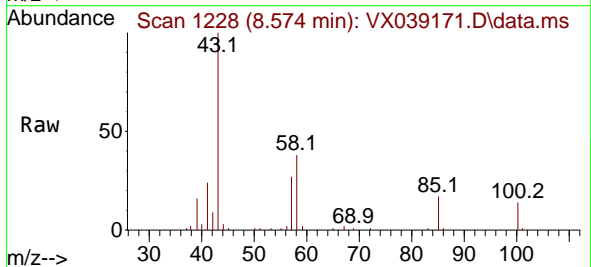
Instrument :  
 MSVOA\_X  
 ClientSampleId :  
 OF-1

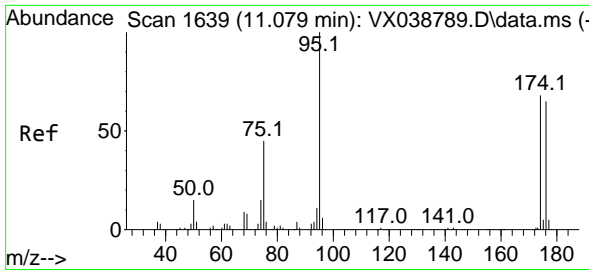
Tgt Ion: 98 Resp: 290751  
 Ion Ratio Lower Upper  
 98 100  
 100 63.2 53.1 79.7



#51  
 4-Methyl-2-Pentanone  
 Concen: 13.065 ug/l  
 RT: 8.574 min Scan# 1228  
 Delta R.T. 0.000 min  
 Lab File: VX039171.D  
 Acq: 12 Dec 2023 17:20

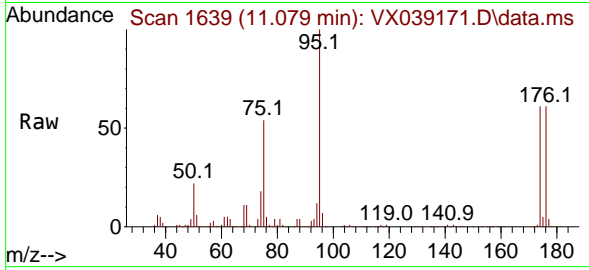
Tgt Ion: 43 Resp: 41580  
 Ion Ratio Lower Upper  
 43 100  
 58 36.8 30.4 45.6



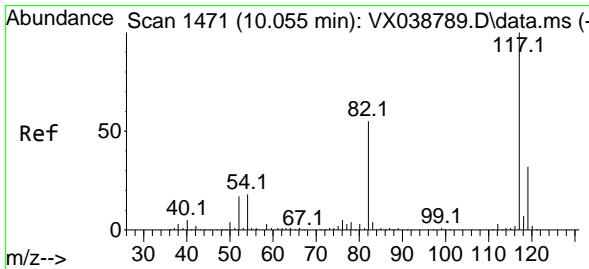
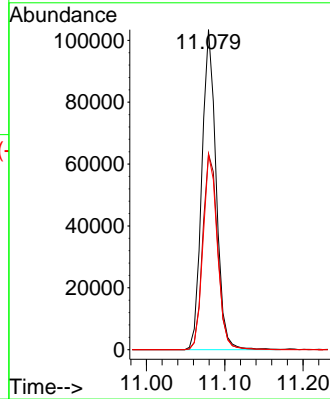
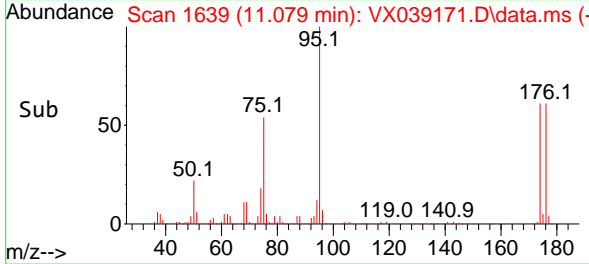


#62  
 4-Bromofluorobenzene  
 Concen: 51.174 ug/l  
 RT: 11.079 min Scan# 1639  
 Delta R.T. 0.000 min  
 Lab File: VX039171.D  
 Acq: 12 Dec 2023 17:20

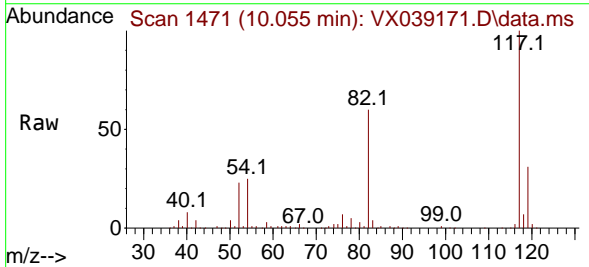
Instrument :  
 MSVOA\_X  
 ClientSampleId :  
 OF-1



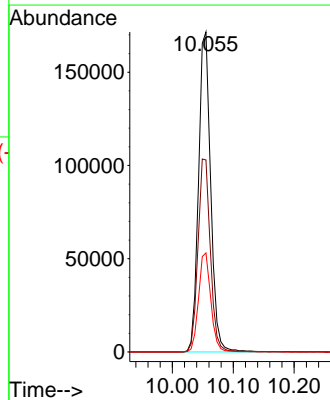
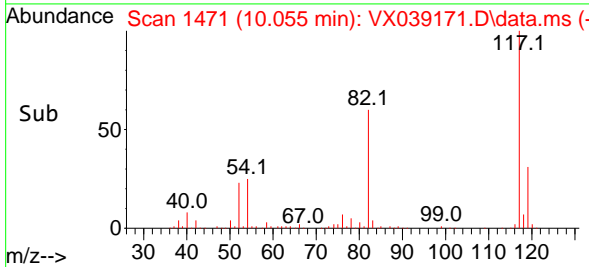
Tgt Ion: 95 Resp: 130799  
 Ion Ratio Lower Upper  
 95 100  
 174 63.8 0.0 135.6  
 176 61.5 0.0 131.0



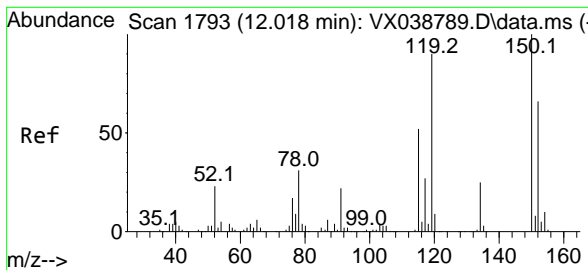
#63  
 Chlorobenzene-d5  
 Concen: 50.000 ug/l  
 RT: 10.055 min Scan# 1471  
 Delta R.T. 0.000 min  
 Lab File: VX039171.D  
 Acq: 12 Dec 2023 17:20



Tgt Ion: 117 Resp: 237592  
 Ion Ratio Lower Upper  
 117 100  
 82 60.0 46.2 69.4  
 119 31.0 25.5 38.3

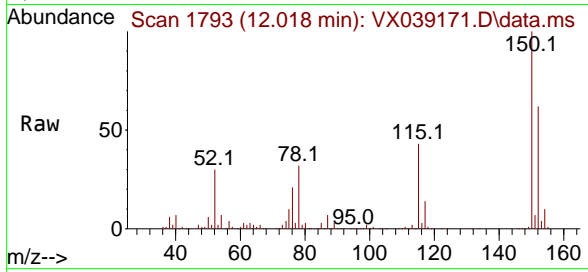






#72  
 1,4-Dichlorobenzene-d4  
 Concen: 50.000 ug/l  
 RT: 12.018 min Scan# 11  
 Delta R.T. 0.000 min  
 Lab File: VX039171.D  
 Acq: 12 Dec 2023 17:20

Instrument :  
 MSVOA\_X  
 ClientSampleId :  
 OF-1



Tgt Ion:152 Resp: 118356

Ion	Ratio	Lower	Upper
152	100		
115	67.7	43.3	129.9
150	158.3	0.0	345.0

