

Data Path : Z:\VOASRV\HPCHEM1\MSVOA X\DATA\VX121318\
 Data File : VX006503.D
 Acq On : 13 Dec 2018 18:51
 Operator : JC/MD
 Sample : J6199-08
 Misc : 5.0mL/MSVOA X/WATER
 ALS Vial : 19 Sample Multiplier: 1

Instrument :
 MSVOA_X
 ClientSampled :
 SU-04-121218-B

Quant Time: Dec 14 00:18:49 2018
 Quant Method : Z:\VOASRV\HPCHEM1\MSVOA_X\METHOD\82X112918W.M
 Quant Title : SW846 8260
 QLast Update : Fri Nov 30 03:55:33 2018
 Response via : Initial Calibration

Internal Standards	R.T.	QIon	Response	Conc	Units	Dev(Min)
1) Pentafluorobenzene	5.67	168	634302	50.00	ug/l	0.00
34) 1,4-Difluorobenzene	6.86	114	1021015	50.00	ug/l	0.00
63) Chlorobenzene-d5	10.12	117	952496	50.00	ug/l	0.00
72) 1,4-Dichlorobenzene-d4	12.08	152	458862	50.00	ug/l	0.00

System Monitoring Compounds

33) 1,2-Dichloroethane-d4	6.07	65	347308	53.64	ug/l	0.00
Spiked Amount	50.000		Recovery	=	107.28%	
35) Dibromofluoromethane	5.51	113	304690	46.09	ug/l	0.00
Spiked Amount	50.000		Recovery	=	92.18%	
50) Toluene-d8	8.71	98	1218581	50.68	ug/l	0.00
Spiked Amount	50.000		Recovery	=	101.36%	
62) 4-Bromofluorobenzene	11.13	95	452583	49.95	ug/l	0.00
Spiked Amount	50.000		Recovery	=	99.90%	

Target Compounds

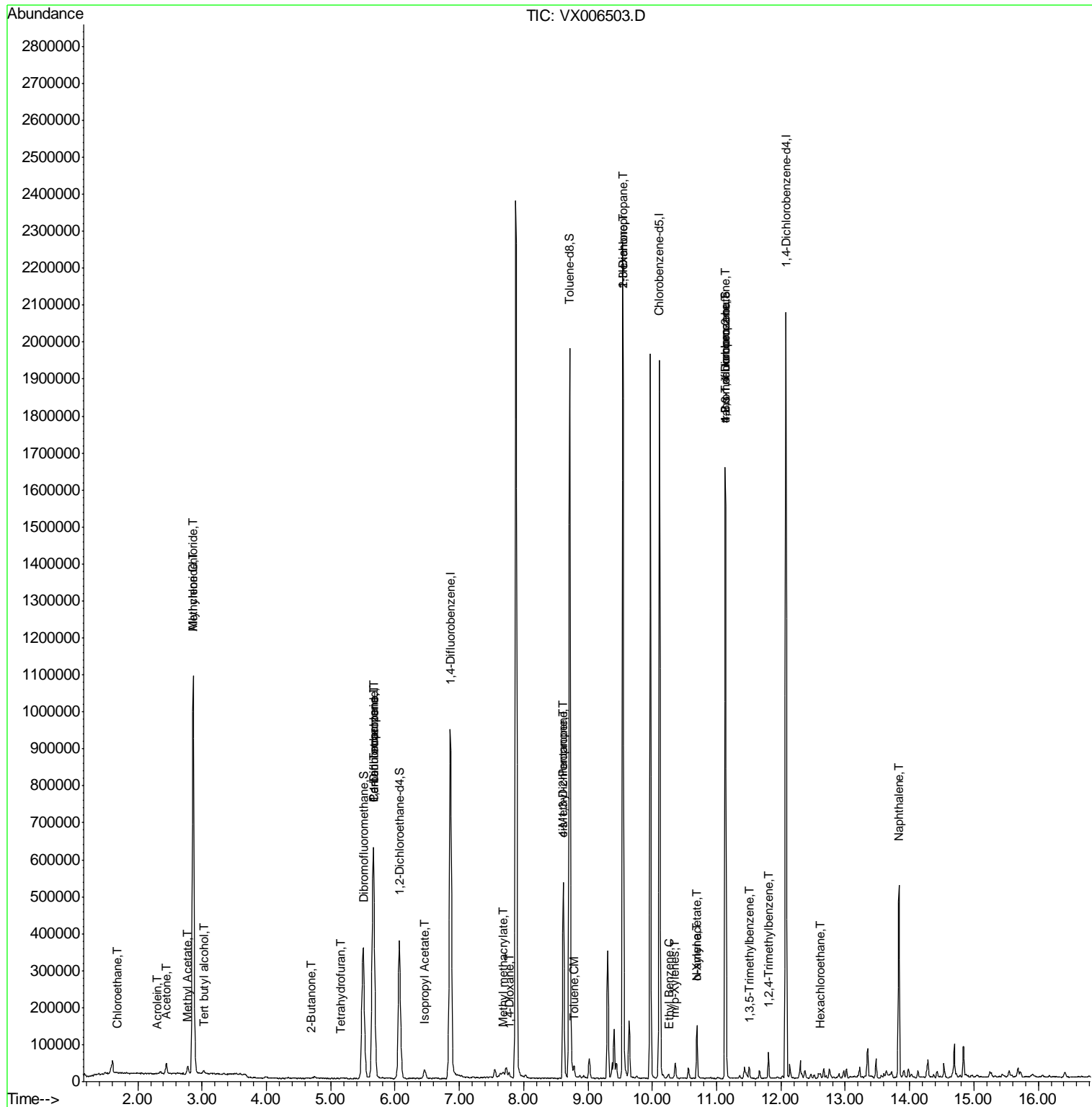
						Qvalue
6) Chloroethane	1.70	64	1132	0.269	ug/l #	84
11) Tert butyl alcohol	3.03	59	6734	3.803	ug/l #	81
13) Acrolein	2.30	56	474	0.490	ug/l #	66
14) Allyl chloride	2.86	41	16954	1.495	ug/l #	27
16) Acetone	2.45	43	28999	9.543	ug/l	92
18) Methyl Acetate	2.78	43	25210	2.481	ug/l	98
20) Methylene Chloride	2.86	84	503676	77.881	ug/l	95
25) 2-Butanone	4.70	43	3370	0.777	ug/l #	76
29) Tetrahydrofuran	5.16	42	2442	0.810	ug/l #	75
36) 1,1-Dichloropropene	5.67	75	42799	4.978	ug/l #	47
38) Carbon Tetrachloride	5.67	117	60735	6.005	ug/l #	17
43) Isopropyl Acetate	6.46	43	33319	2.075	ug/l	94
48) Methyl methacrylate	7.68	41	17118	2.192	ug/l #	13
49) 1,4-Dioxane	7.77	88	151	0.784	ug/l #	1
51) 4-Methyl-2-Pentanone	8.62	43	167813	17.956	ug/l #	49
52) Toluene	8.78	92	9496	0.561	ug/l	87
54) cis-1,3-Dichloropropene	8.62	75	92157	8.290	ug/l #	59
57) 1,3-Dichloropropane	9.54	76	19864	1.825	ug/l #	44
59) 2-Hexanone	9.54	43	244195	34.201	ug/l #	52
67) Ethyl Benzene	10.25	91	6924	0.206	ug/l #	84
68) m/p-Xylenes	10.36	106	10427	0.774	ug/l	88
69) o-Xylene	10.69	106	5879	0.442	ug/l	100
74) N-amyl acetate	10.69	43	24741	1.813	ug/l #	57
76) 1,2,3-Trichloropropane	11.13	75	206442	23.309	ug/l #	38
80) 1,3,5-Trimethylbenzene	11.51	105	13532	0.513	ug/l	92
81) trans-1,4-Dichloro-2-buten	11.13	75	206442	54.700	ug/l #	15
84) 1,2,4-Trimethylbenzene	11.80	105	31037	1.140	ug/l	98
90) Hexachloroethane	12.60	117	1438	0.245	ug/l #	11
95) Naphthalene	13.83	128	336246	9.541	ug/l	100

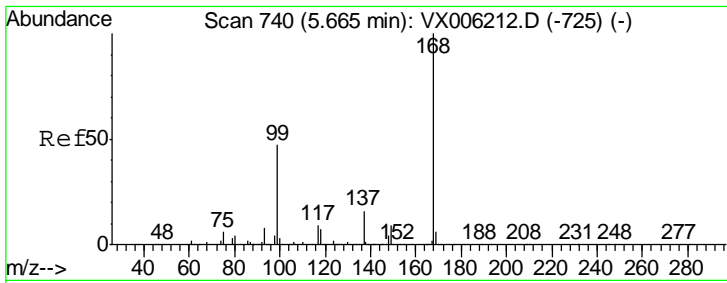
(#) = qualifier out of range (m) = manual integration (+) = signals summed

Data Path : Z:\VOASRV\HPCHEM1\MSVOA X\DATA\VX121318\
 Data File : VX006503.D
 Acq On : 13 Dec 2018 18:51
 Operator : JC/MD
 Sample : J6199-08
 Misc : 5.0mL/MSVOA X/WATER
 ALS Vial : 19 Sample Multiplier: 1

Instrument :
 MSVOA_X
 Client Sampled :
 SU-04-121218-B

Quant Time: Dec 14 00:18:49 2018
 Quant Method : Z:\VOASRV\HPCHEM1\MSVOA_X\METHOD\82X112918W.M
 Quant Title : SW846 8260
 QLast Update : Fri Nov 30 03:55:33 2018
 Response via : Initial Calibration

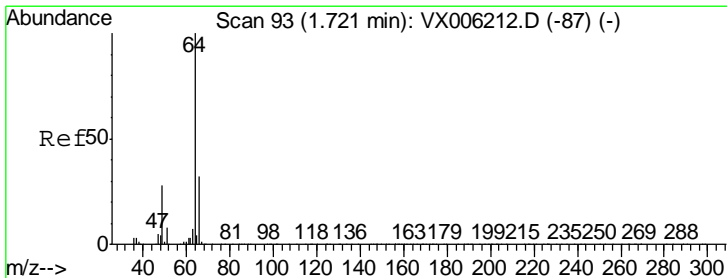
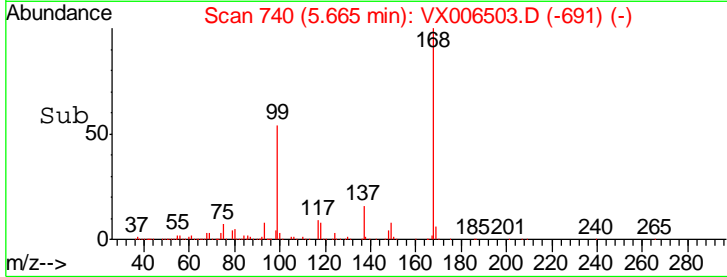
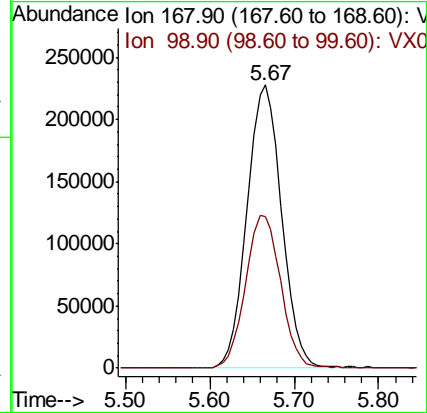
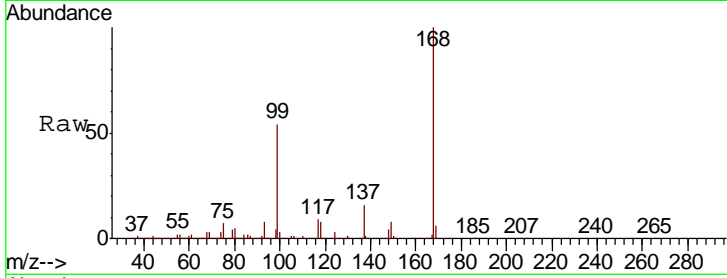




#1
 Pentafluorobenzene
 Concen: 50.000 ug/l
 RT: 5.67 min Scan# 740
 Delta R.T. 0.00 min
 Lab File: VX006503.D
 Acq: 13 Dec 2018 18:51

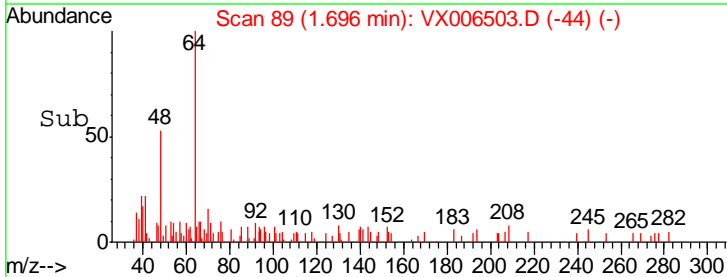
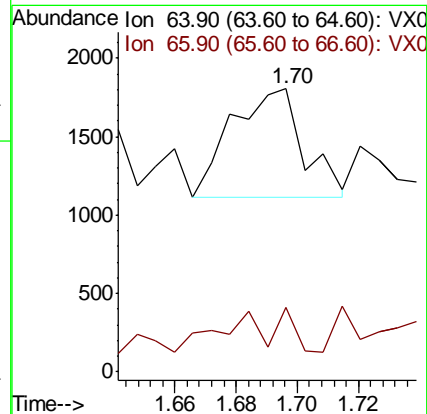
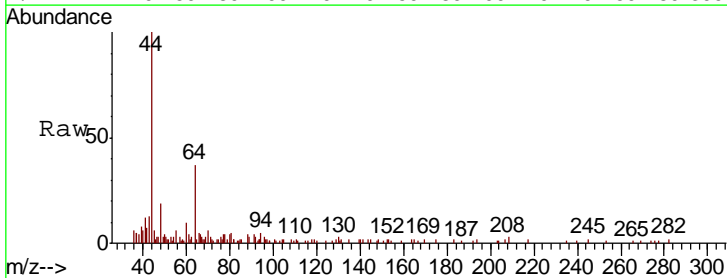
Instrument :
 MSVOA_X
 ClientSampleID :
 SU-04-121218-B

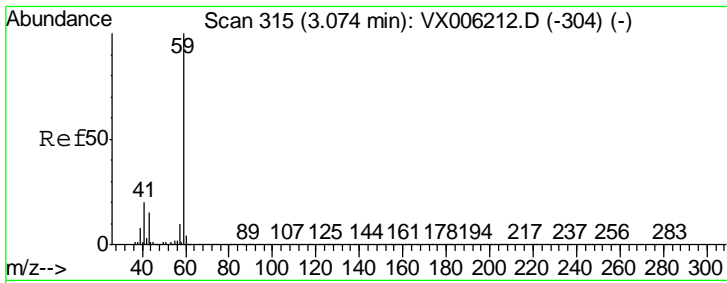
Tgt Ion	Resp	Lower	Upper
168	100		
99	53.5	37.8	56.8



#6
 Chloroethane
 Concen: 0.269 ug/l
 RT: 1.70 min Scan# 89
 Delta R.T. -0.02 min
 Lab File: VX006503.D
 Acq: 13 Dec 2018 18:51

Tgt Ion	Resp	Lower	Upper
64	100		
66	23.7	25.9	38.9#

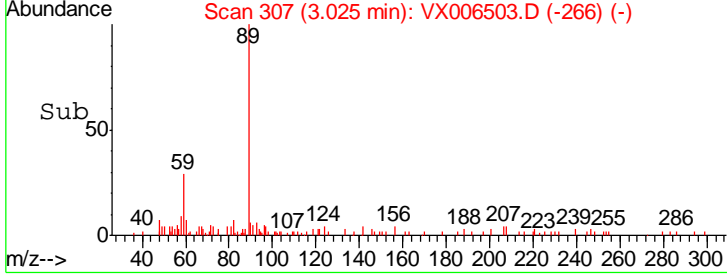
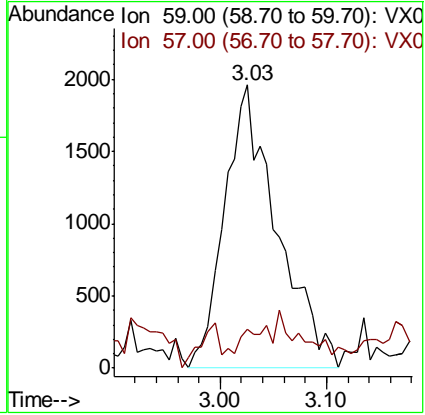
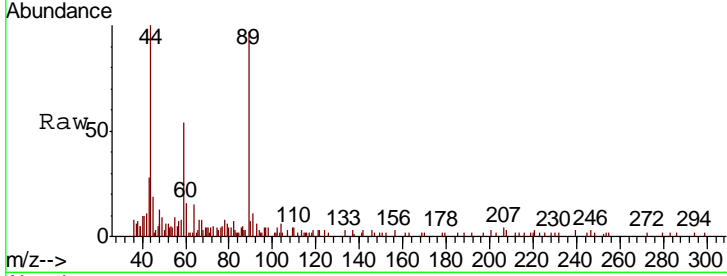




#11
 Tert butyl alcohol
 Concen: 3.803 ug/l
 RT: 3.03 min Scan# 307
 Delta R.T. -0.05 min
 Lab File: VX006503.D
 Acq: 13 Dec 2018 18:51

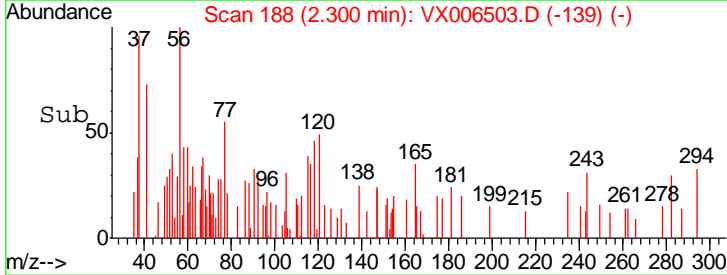
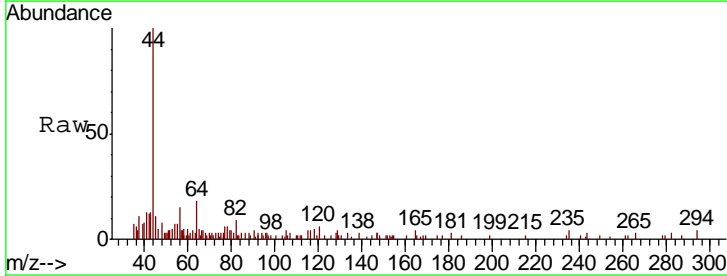
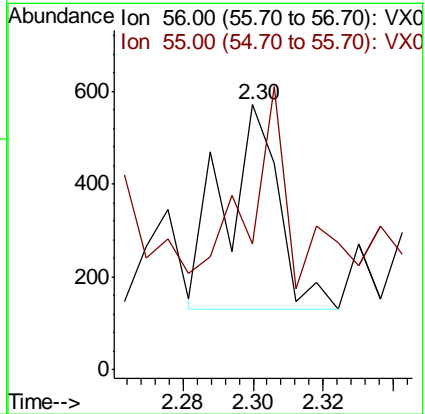
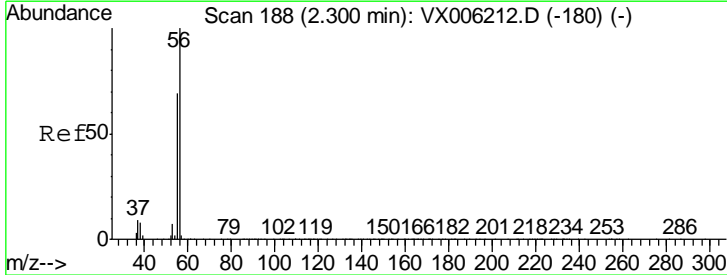
Instrument : MSVOA_X
 ClientSampled : SU-04-121218-B

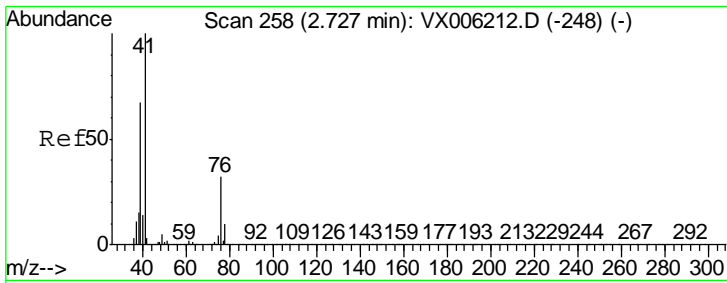
Tgt Ion: 59 Resp: 6734
 Ion Ratio Lower Upper
 59 100
 57 3.0 8.2 12.2#



#13
 Acrolein
 Concen: 0.490 ug/l
 RT: 2.30 min Scan# 188
 Delta R.T. 0.00 min
 Lab File: VX006503.D
 Acq: 13 Dec 2018 18:51

Tgt Ion: 56 Resp: 474
 Ion Ratio Lower Upper
 56 100
 55 100.4 57.8 86.6#

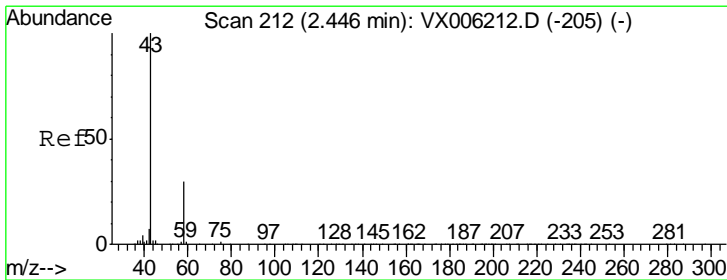
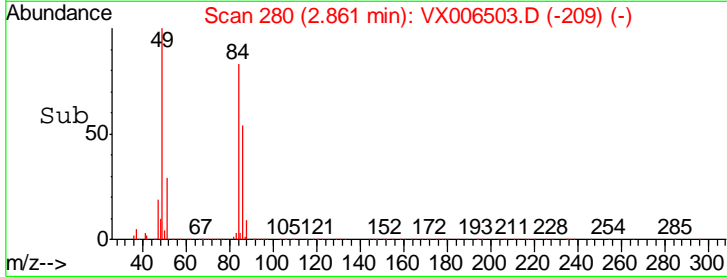
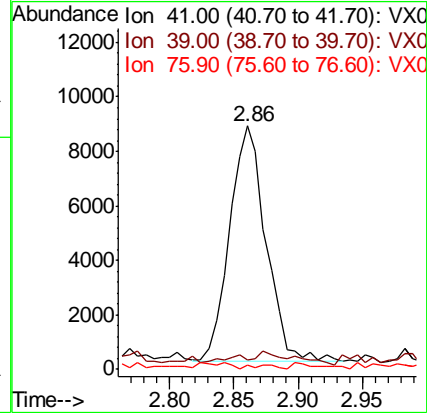
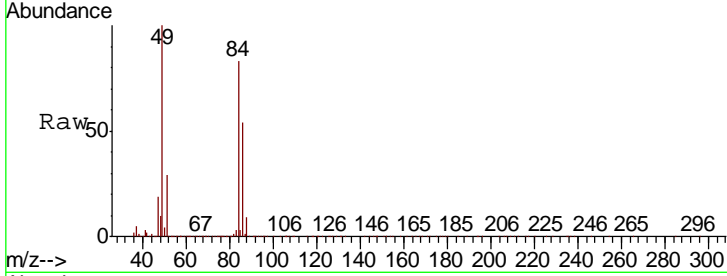




#14
 Allvl chloride
 Concen: 1.495 ug/l
 RT: 2.86 min Scan# 280
 Delta R.T. 0.13 min
 Lab File: VX006503.D
 Acq: 13 Dec 2018 18:51

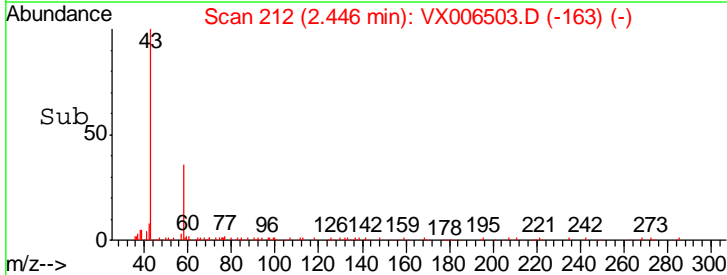
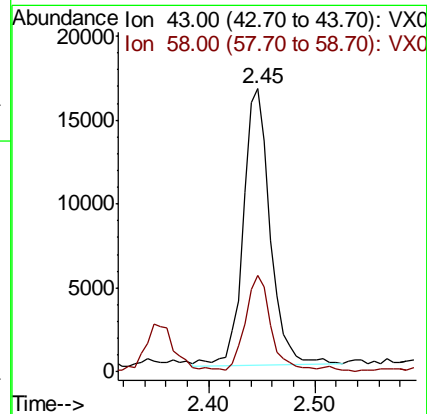
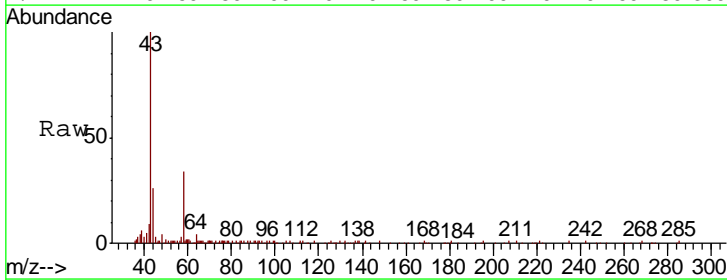
Instrument :
 MSVOA_X
 ClientSampled :
 SU-04-121218-B

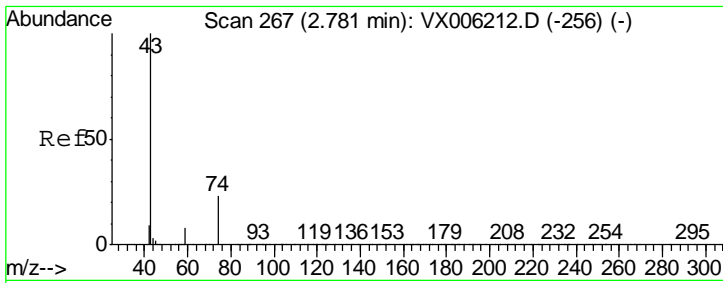
Tgt Ion	Resp	Lower	Upper
41	16954		
39	1.0	52.4	78.6#
76	1.4	25.4	38.0#



#16
 Acetone
 Concen: 9.543 ug/l
 RT: 2.45 min Scan# 212
 Delta R.T. 0.00 min
 Lab File: VX006503.D
 Acq: 13 Dec 2018 18:51

Tgt Ion	Resp	Lower	Upper
43	28999		
58	34.6	24.0	36.0

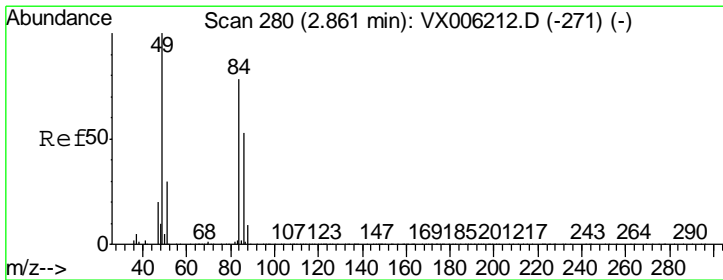
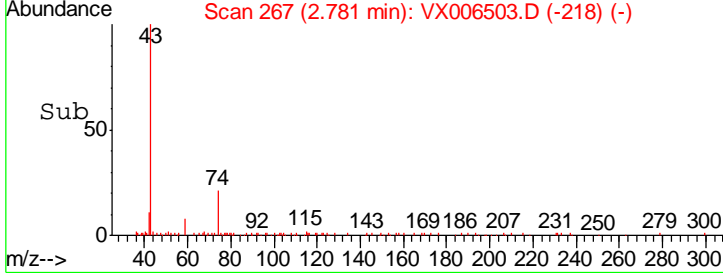
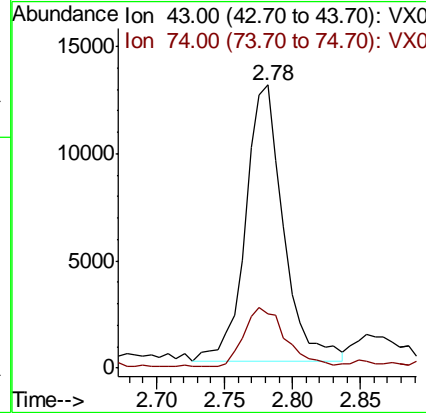
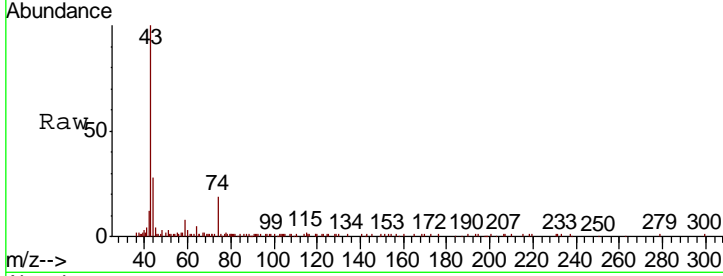




#18
 Methyl Acetate
 Concen: 2.481 ug/l
 RT: 2.78 min Scan# 267
 Delta R.T. 0.00 min
 Lab File: VX006503.D
 Acq: 13 Dec 2018 18:51

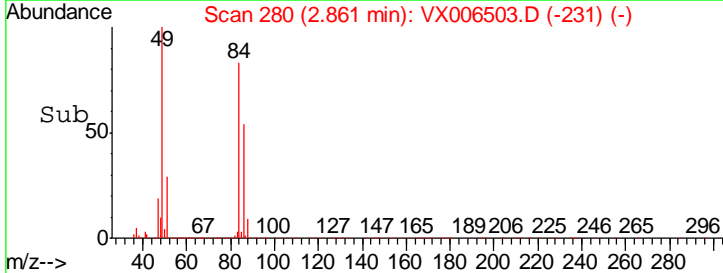
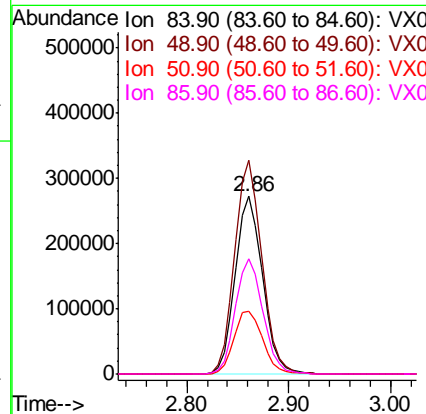
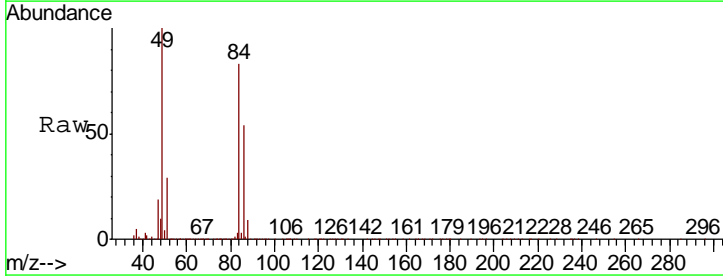
Instrument :
 MSVOA_X
 ClientSampled :
 SU-04-121218-B

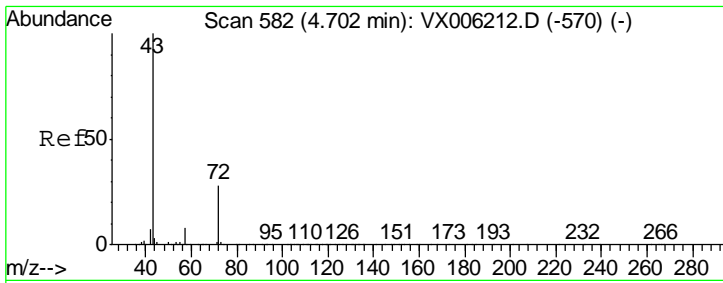
Tgt Ion	Resp	Lower	Upper
43	25210		
74	23.1	17.9	26.9



#20
 Methylene Chloride
 Concen: 77.881 ug/l
 RT: 2.86 min Scan# 280
 Delta R.T. 0.00 min
 Lab File: VX006503.D
 Acq: 13 Dec 2018 18:51

Tgt Ion	Resp	Lower	Upper
84	503676		
49	120.2	102.2	153.4
51	35.3	31.1	46.7
86	64.9	53.7	80.5

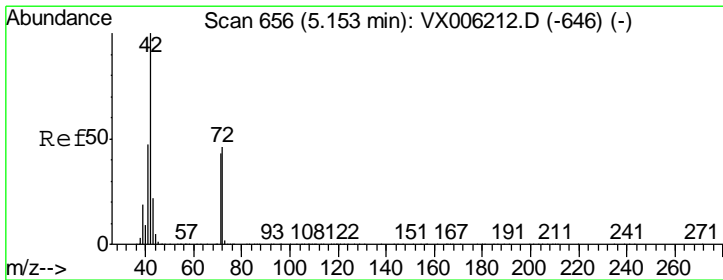
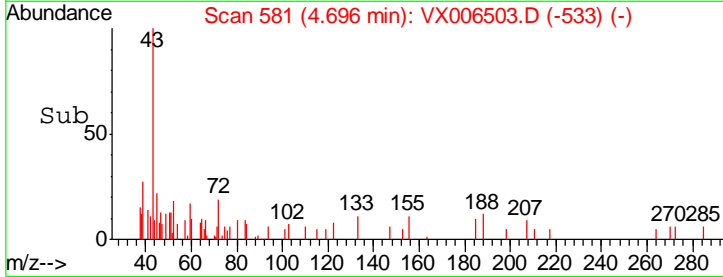
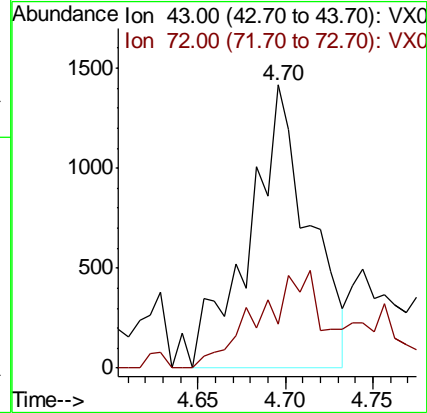
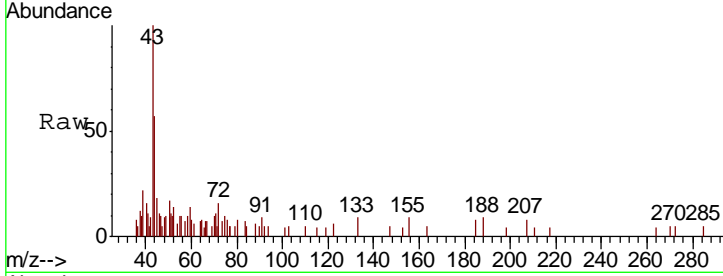




#25
 2-Butanone
 Concen: 0.777 ug/l
 RT: 4.70 min Scan# 581
 Delta R.T. -0.01 min
 Lab File: VX006503.D
 Acq: 13 Dec 2018 18:51

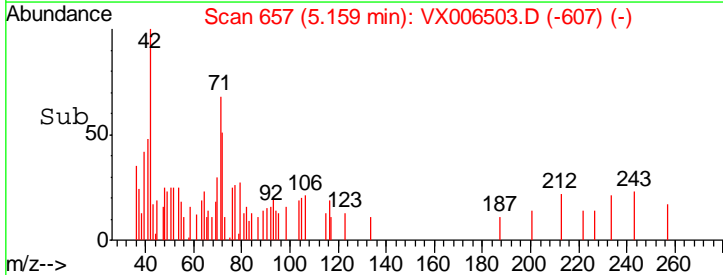
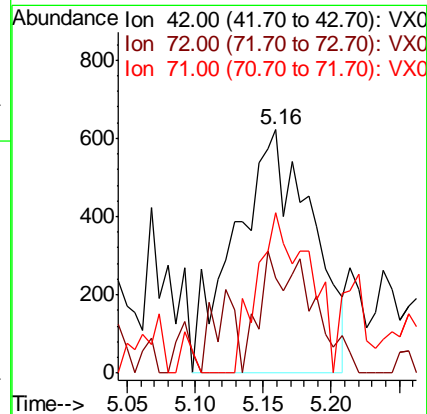
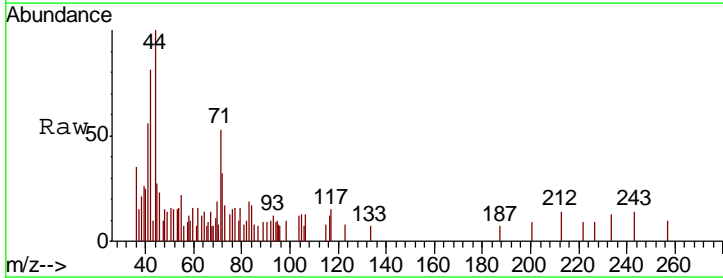
Instrument :
 MSVOA_X
 ClientSampled :
 SU-04-121218-B

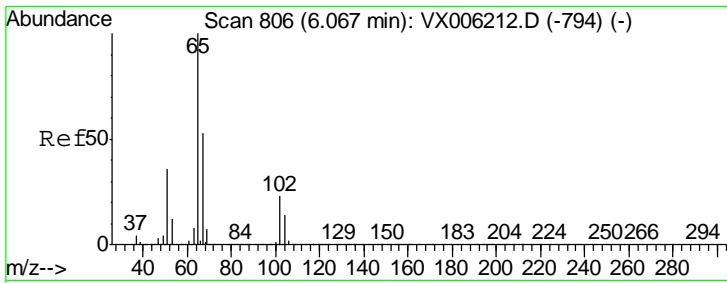
Tgt Ion	Resp	Lower	Upper
43	100		
72	15.8	22.6	33.8#



#29
 Tetrahydrofuran
 Concen: 0.810 ug/l
 RT: 5.16 min Scan# 657
 Delta R.T. 0.01 min
 Lab File: VX006503.D
 Acq: 13 Dec 2018 18:51

Tgt Ion	Resp	Lower	Upper
42	100		
72	15.4	37.8	56.8#
71	44.6	35.2	52.8

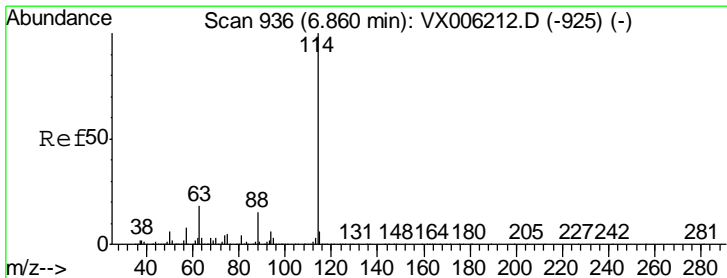
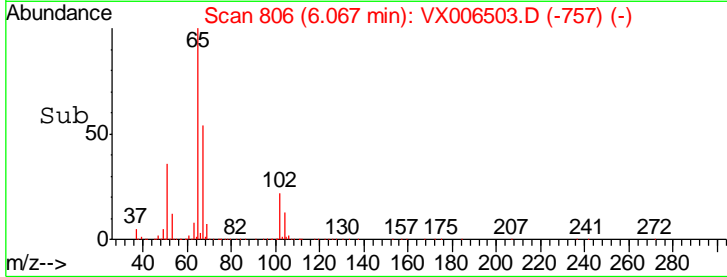
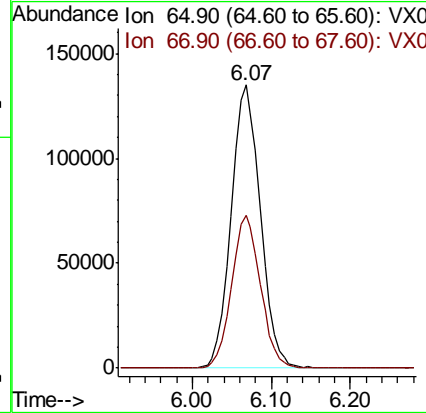
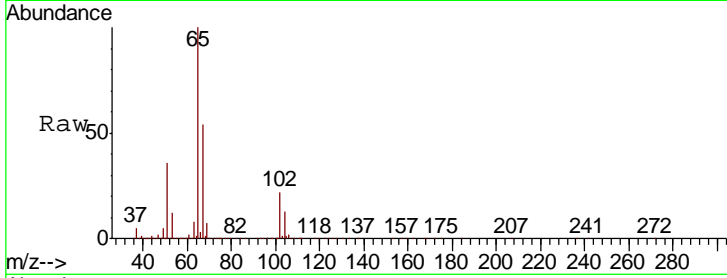




#33
 1,2-Dichloroethane-d4
 Concen: 53.637 ug/l
 RT: 6.07 min Scan# 806
 Delta R.T. 0.00 min
 Lab File: VX006503.D
 Acq: 13 Dec 2018 18:51

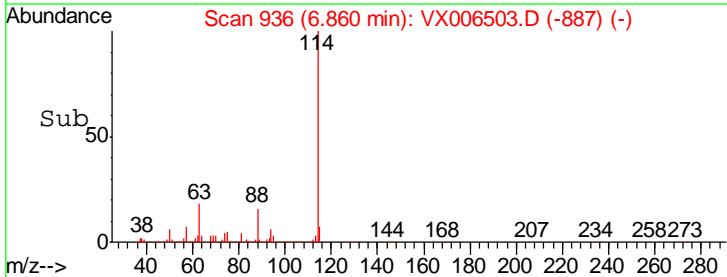
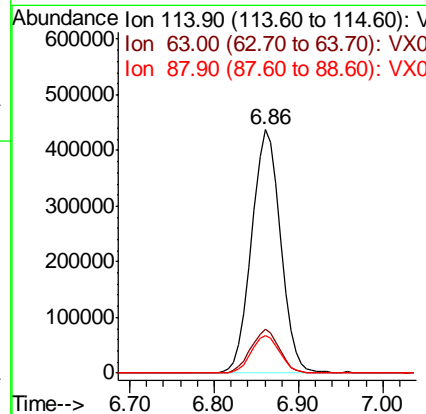
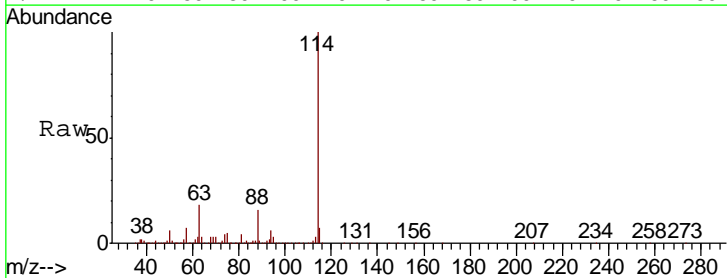
Instrument :
 MSVOA_X
 ClientSampleId :
 SU-04-121218-B

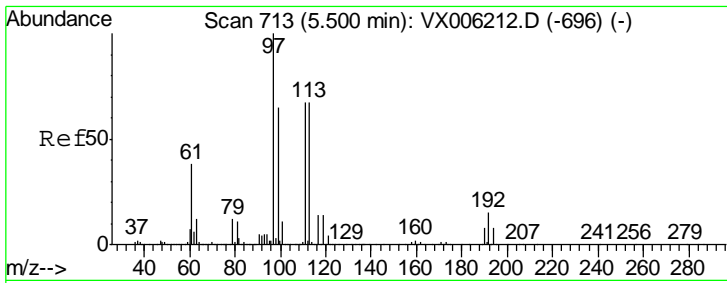
Tgt Ion: 65 Resp: 347308
 Ion Ratio Lower Upper
 65 100
 67 53.5 0.0 107.2



#34
 1,4-Difluorobenzene
 Concen: 50.000 ug/l
 RT: 6.86 min Scan# 936
 Delta R.T. 0.00 min
 Lab File: VX006503.D
 Acq: 13 Dec 2018 18:51

Tgt Ion: 114 Resp: 1021015
 Ion Ratio Lower Upper
 114 100
 63 18.2 0.0 36.6
 88 15.6 0.0 29.0

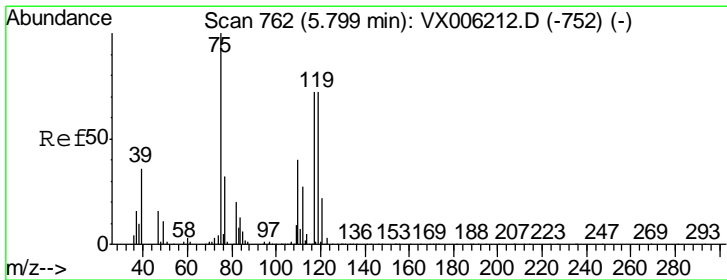
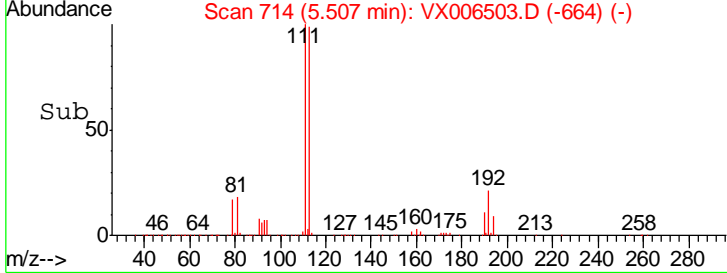
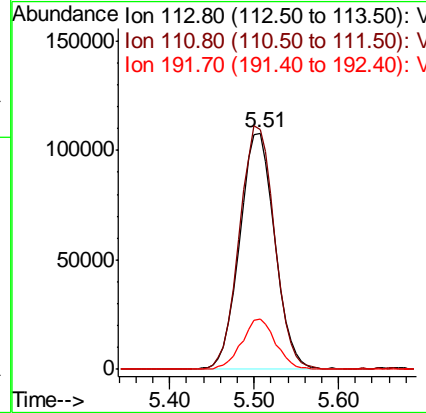
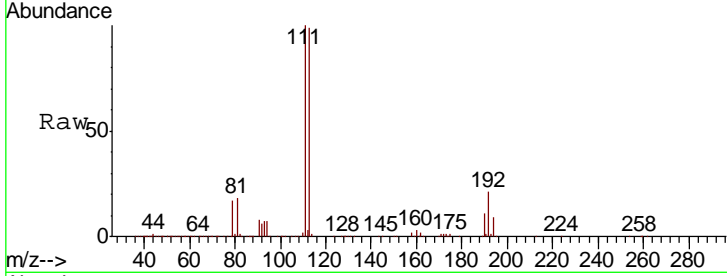




#35
 Dibromofluoromethane
 Concen: 46.091 ug/l
 RT: 5.51 min Scan# 714
 Delta R.T. 0.01 min
 Lab File: VX006503.D
 Acq: 13 Dec 2018 18:51

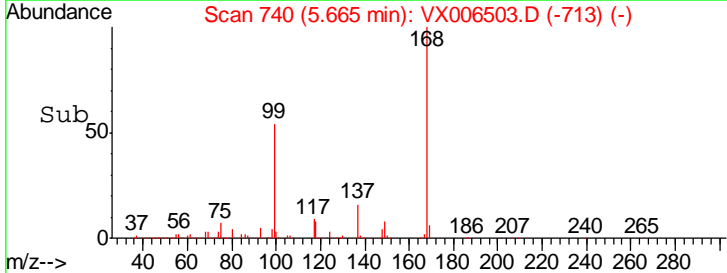
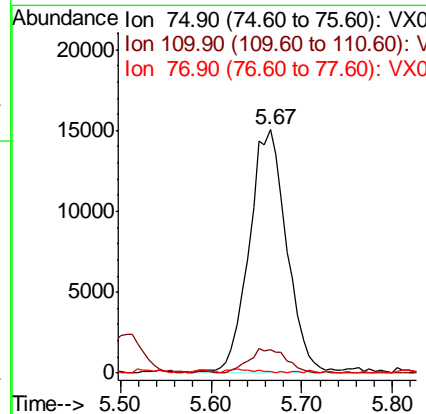
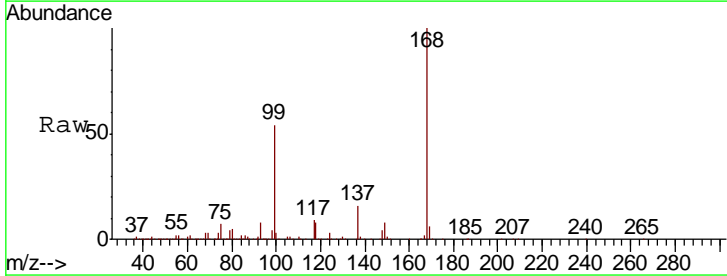
Instrument :
 MSVOA_X
 ClientSampled :
 SU-04-121218-B

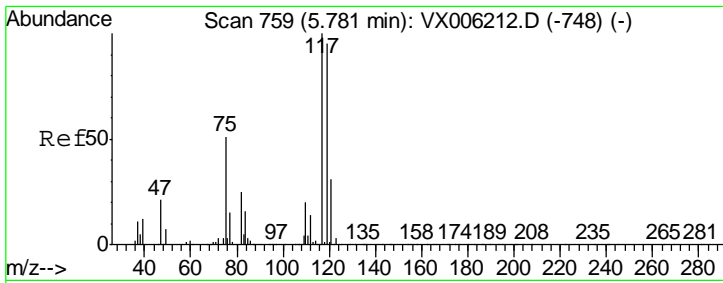
Tgt Ion	Resp	Lower	Upper
113	304690		
113	100		
111	102.8	81.1	121.7
192	20.5	18.2	27.2



#36
 1,1-Dichloropropene
 Concen: 4.978 ug/l
 RT: 5.67 min Scan# 740
 Delta R.T. -0.13 min
 Lab File: VX006503.D
 Acq: 13 Dec 2018 18:51

Tgt Ion	Resp	Lower	Upper
75	42799		
75	100		
110	10.0	20.4	61.3#
77	0.0	24.9	37.3#

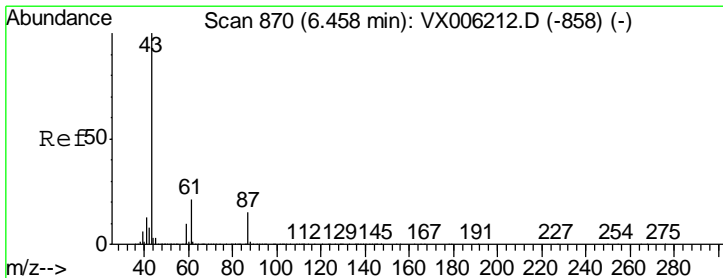
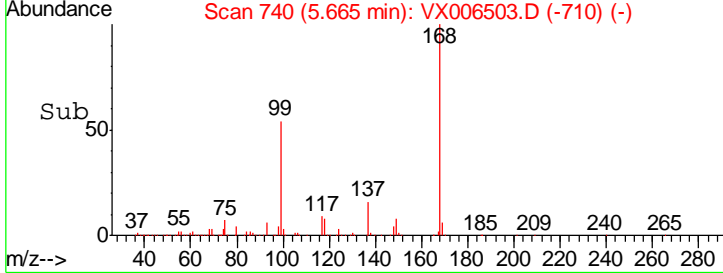
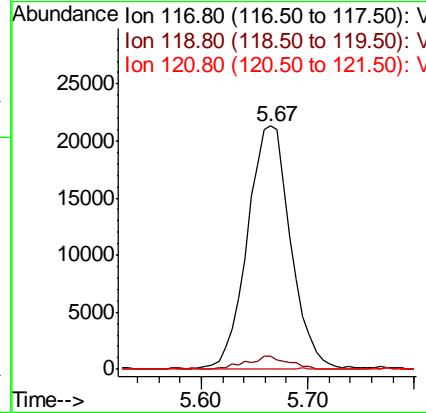
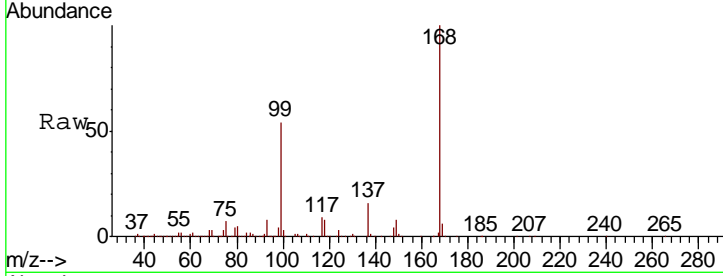




#38
 Carbon Tetrachloride
 Concen: 6.005 ug/l
 RT: 5.67 min Scan# 740
 Delta R.T. -0.12 min
 Lab File: VX006503.D
 Acq: 13 Dec 2018 18:51

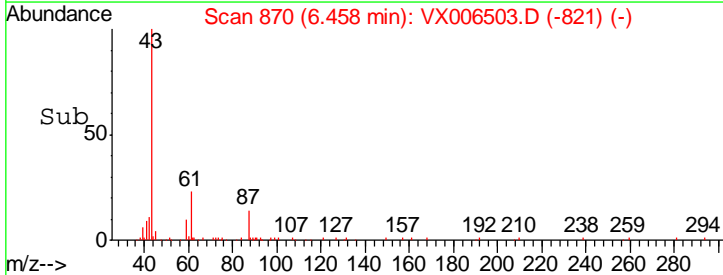
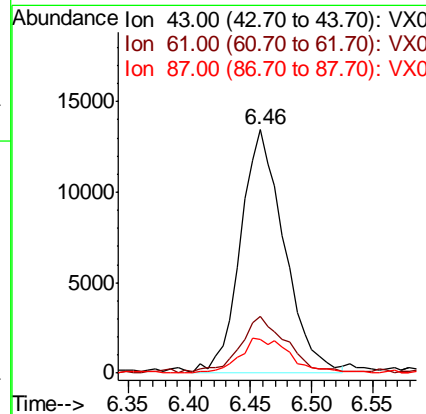
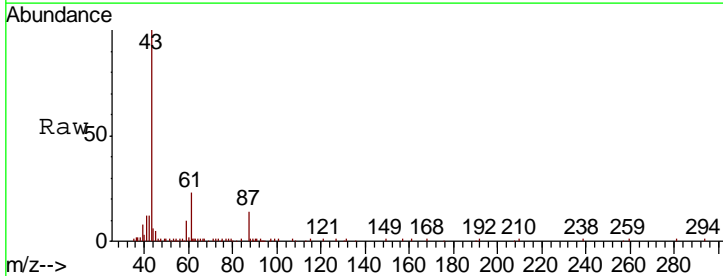
Instrument :
 MSVOA_X
 ClientSampled :
 SU-04-121218-B

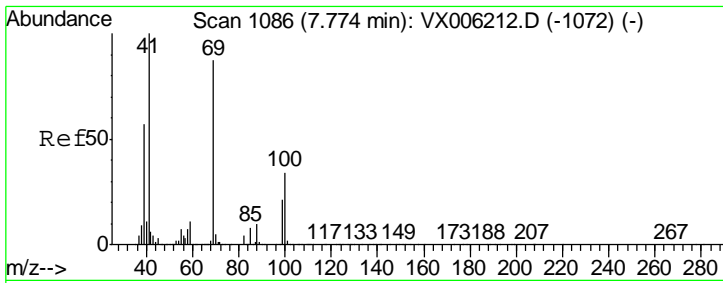
Tgt Ion	Resp	Lower	Upper
117	60735		
119	5.2	75.8	113.8#
121	0.0	24.6	37.0#



#43
 Isopropyl Acetate
 Concen: 2.075 ug/l
 RT: 6.46 min Scan# 870
 Delta R.T. 0.00 min
 Lab File: VX006503.D
 Acq: 13 Dec 2018 18:51

Tgt Ion	Resp	Lower	Upper
43	33319		
61	24.6	16.8	25.2
87	16.7	11.9	17.9

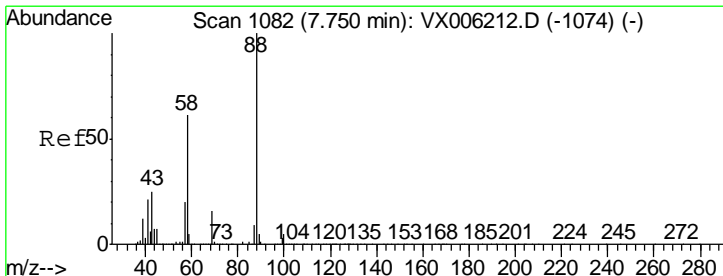
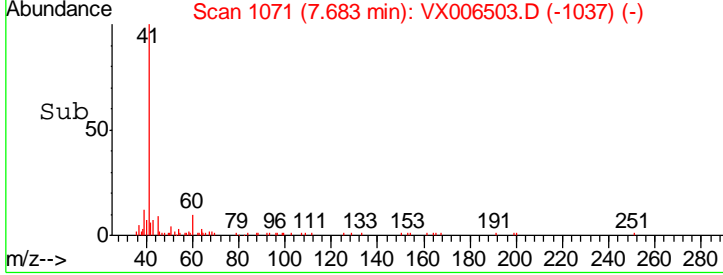
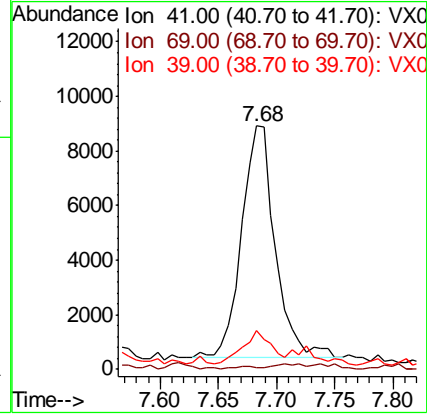
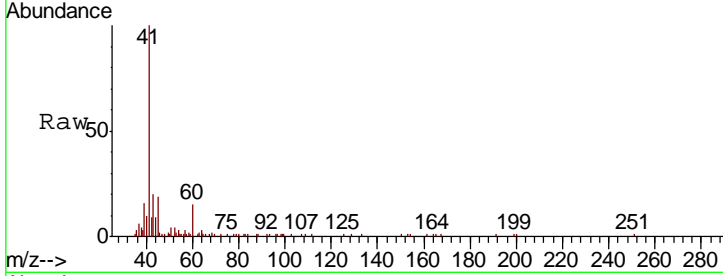




#48
 Methyl methacrylate
 Concen: 2.192 ug/l
 RT: 7.68 min Scan# 1071
 Delta R.T. -0.09 min
 Lab File: VX006503.D
 Acq: 13 Dec 2018 18:51

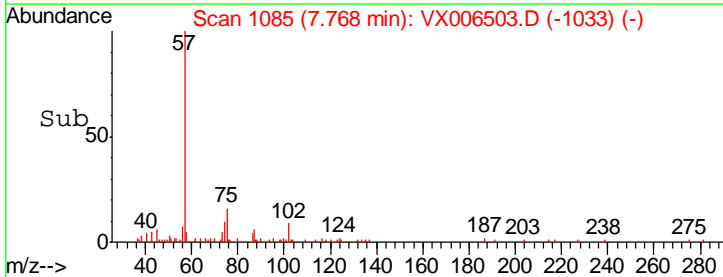
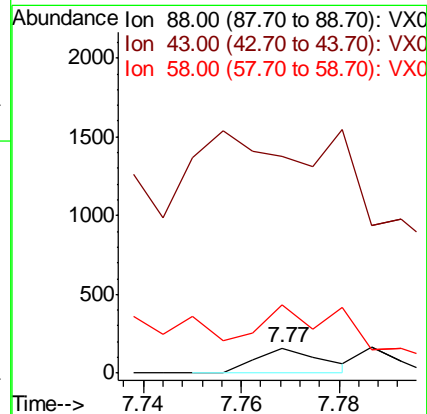
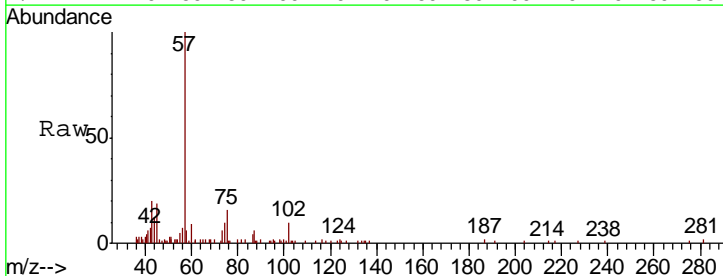
Instrument :
 MSVOA_X
 ClientSampled :
 SU-04-121218-B

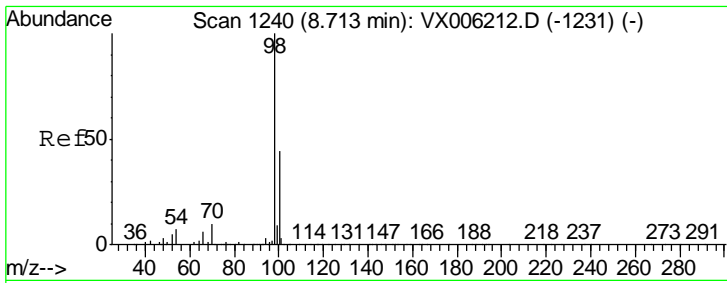
Tgt Ion	Resp	Lower	Upper
41	17118		
69	100	70.3	105.5#
39	0.0	45.3	67.9#



#49
 1,4-Dioxane
 Concen: 0.784 ug/l
 RT: 7.77 min Scan# 1085
 Delta R.T. 0.02 min
 Lab File: VX006503.D
 Acq: 13 Dec 2018 18:51

Tgt Ion	Resp	Lower	Upper
88	151		
43	100	23.2	34.8#
58	266.9	51.4	77.0#

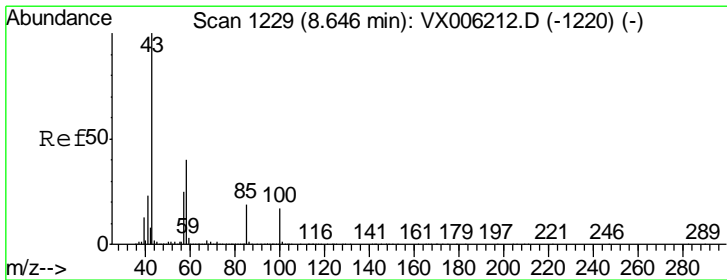
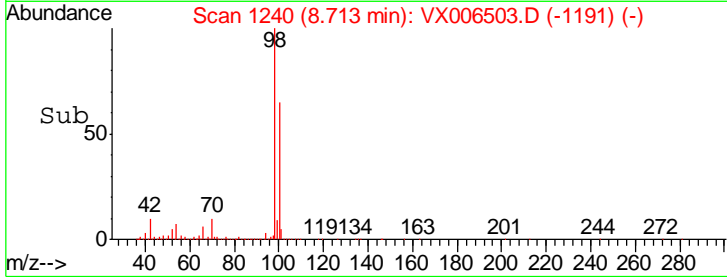
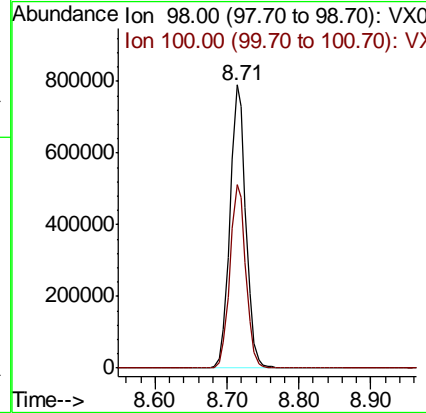
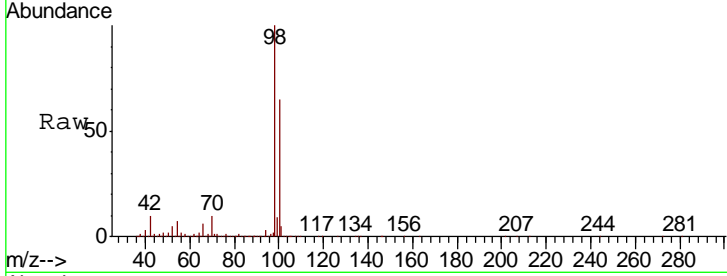




#50
 Toluene-d8
 Concen: 50.678 ug/l
 RT: 8.71 min Scan# 1240
 Delta R.T. 0.00 min
 Lab File: VX006503.D
 Acq: 13 Dec 2018 18:51

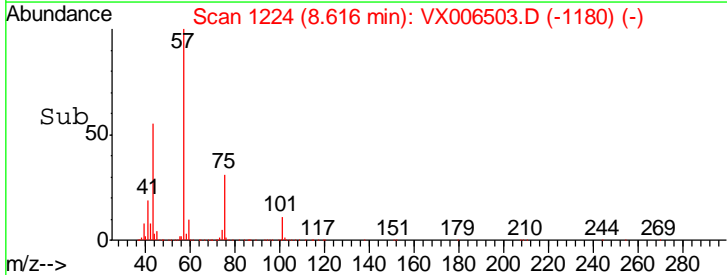
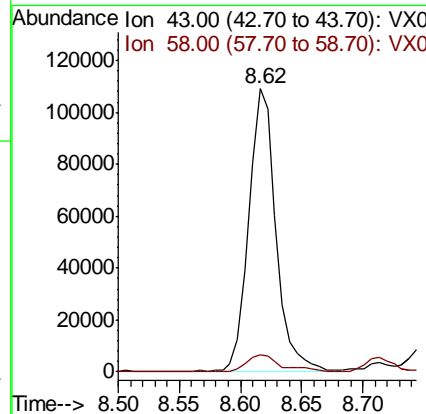
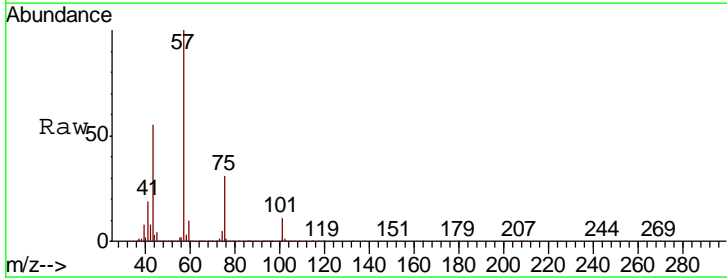
Instrument : MSVOA_X
 ClientSampled : SU-04-121218-B

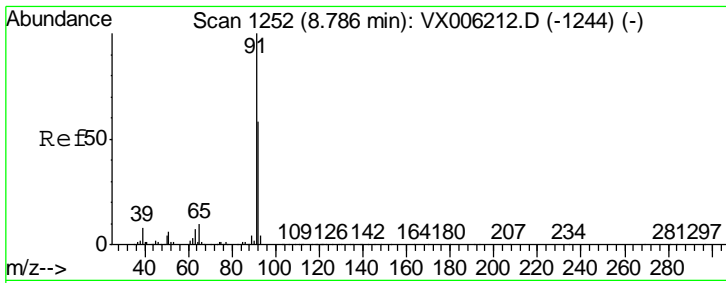
Tgt Ion: 98 Resp: 1218581
 Ion Ratio Lower Upper
 98 100
 100 65.1 52.2 78.2



#51
 4-Methyl-2-Pentanone
 Concen: 17.956 ug/l
 RT: 8.62 min Scan# 1224
 Delta R.T. -0.03 min
 Lab File: VX006503.D
 Acq: 13 Dec 2018 18:51

Tgt Ion: 43 Resp: 167813
 Ion Ratio Lower Upper
 43 100
 58 8.1 31.3 46.9#

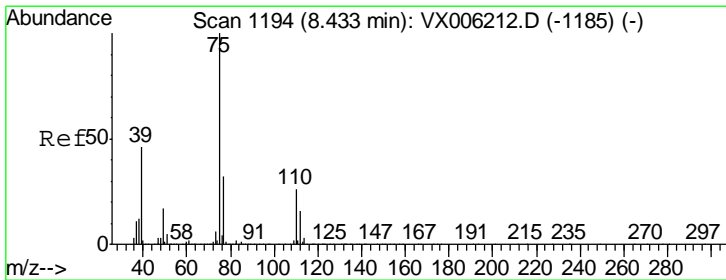
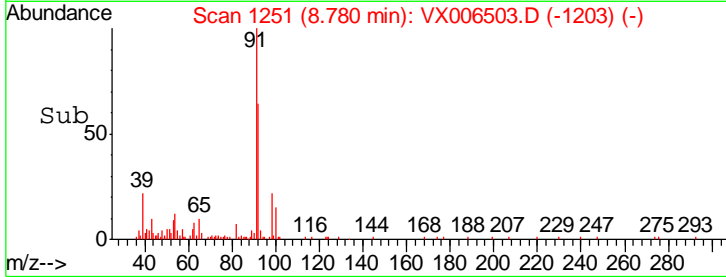
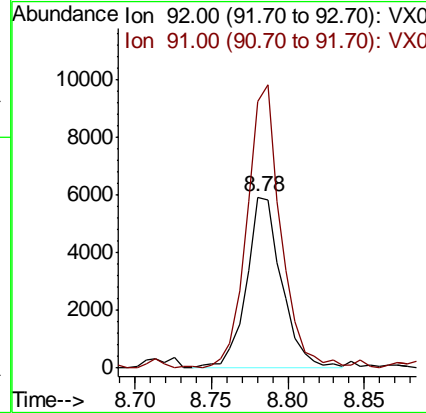
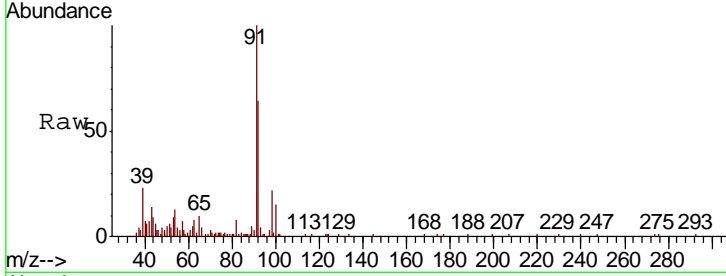




#52
 Toluene
 Concen: 0.561 ug/l
 RT: 8.78 min Scan# 1251
 Delta R.T. -0.01 min
 Lab File: VX006503.D
 Acq: 13 Dec 2018 18:51

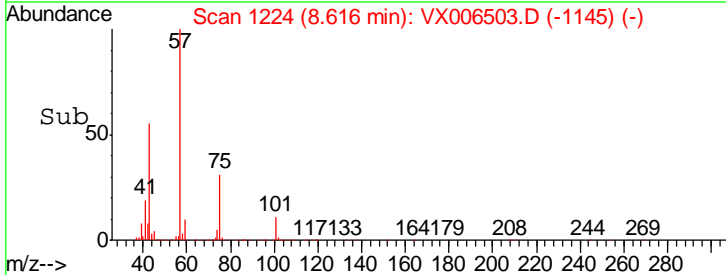
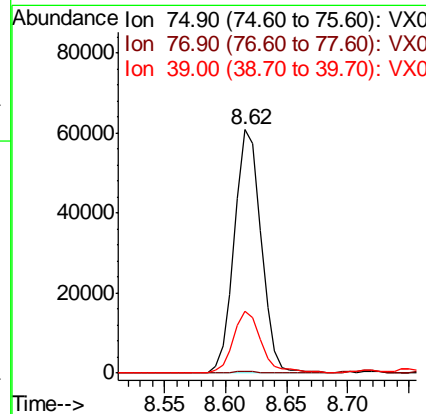
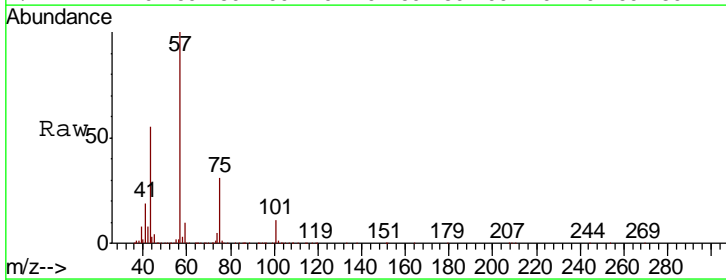
Instrument :
 MSVOA_X
 ClientSampled :
 SU-04-121218-B

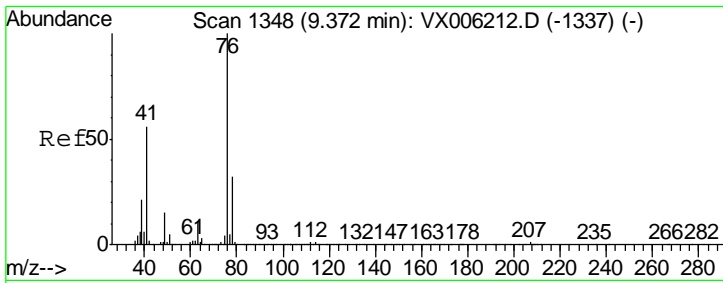
Tgt Ion	Resp	Lower	Upper
92	9496		
92	100		
91	156.3	139.2	208.8



#54
 cis-1,3-Dichloropropene
 Concen: 8.290 ug/l
 RT: 8.62 min Scan# 1224
 Delta R.T. 0.18 min
 Lab File: VX006503.D
 Acq: 13 Dec 2018 18:51

Tgt Ion	Resp	Lower	Upper
75	92157		
75	100		
77	0.7	25.6	38.4#
39	25.2	36.5	54.7#

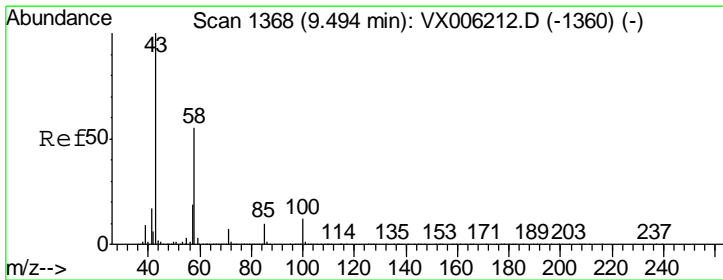
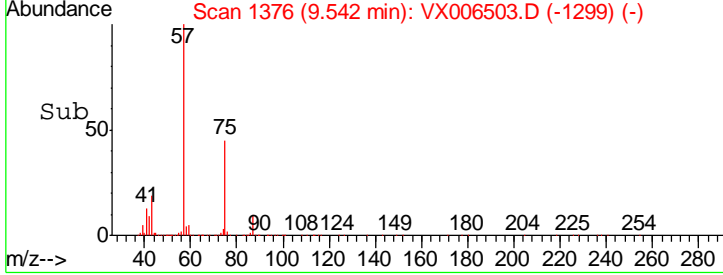
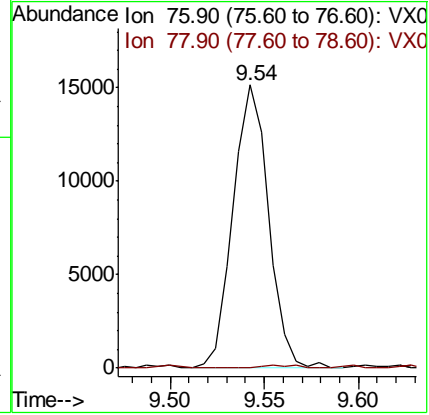
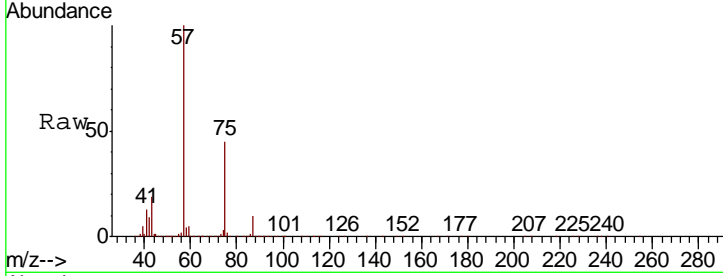




#57
 1,3-Dichloropropane
 Concen: 1.825 ug/l
 RT: 9.54 min Scan# 1376
 Delta R.T. 0.17 min
 Lab File: VX006503.D
 Acq: 13 Dec 2018 18:51

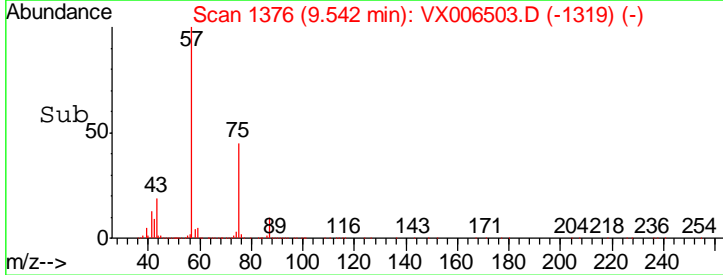
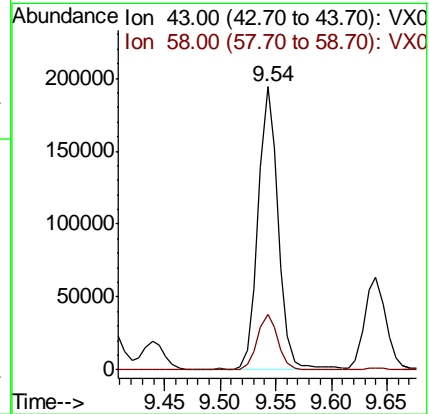
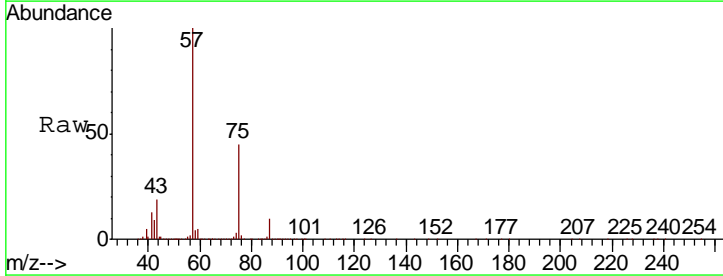
Instrument :
 MSVOA_X
 ClientSampled :
 SU-04-121218-B

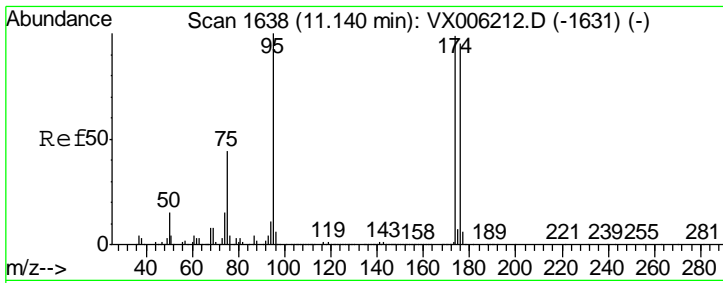
Tgt Ion: 76 Resp: 19864
 Ion Ratio Lower Upper
 76 100
 78 1.0 26.1 39.1#



#59
 2-Hexanone
 Concen: 34.201 ug/l
 RT: 9.54 min Scan# 1376
 Delta R.T. 0.05 min
 Lab File: VX006503.D
 Acq: 13 Dec 2018 18:51

Tgt Ion: 43 Resp: 244195
 Ion Ratio Lower Upper
 43 100
 58 20.5 27.7 83.1#

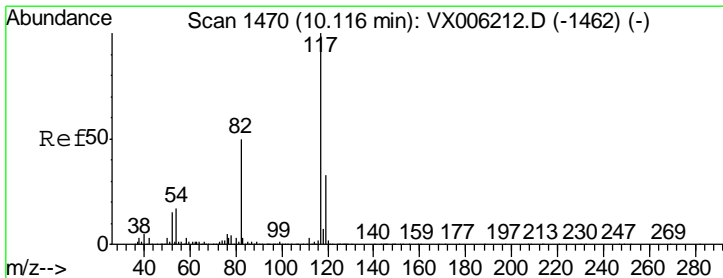
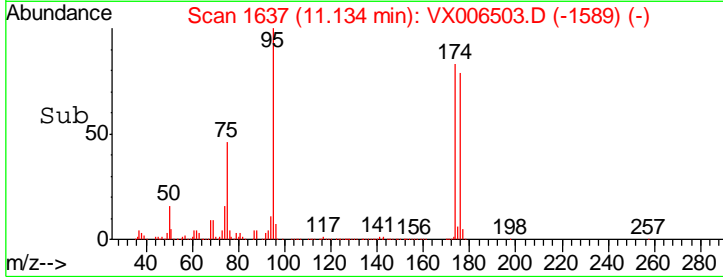
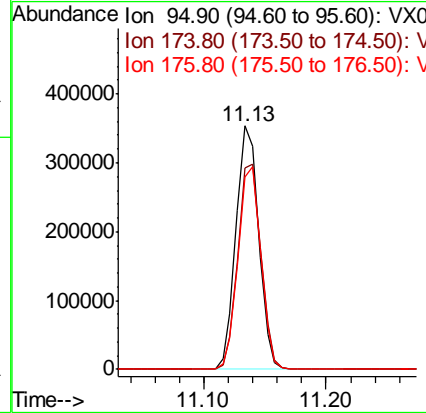
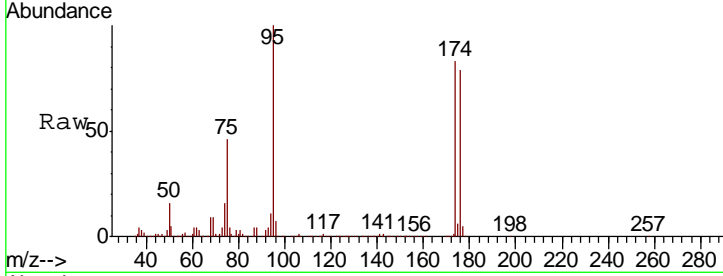




#62
 4-Bromofluorobenzene
 Concen: 49.948 ug/l
 RT: 11.13 min Scan# 1637
 Delta R.T. -0.01 min
 Lab File: VX006503.D
 Acq: 13 Dec 2018 18:51

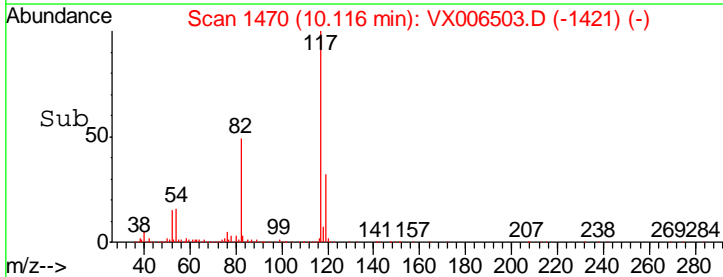
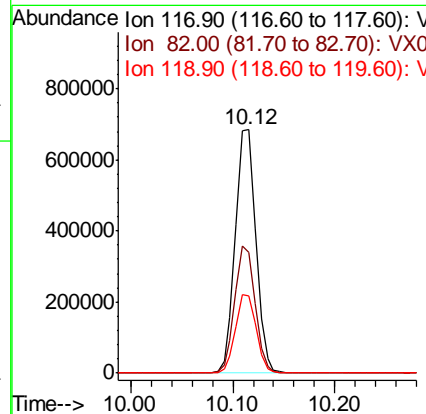
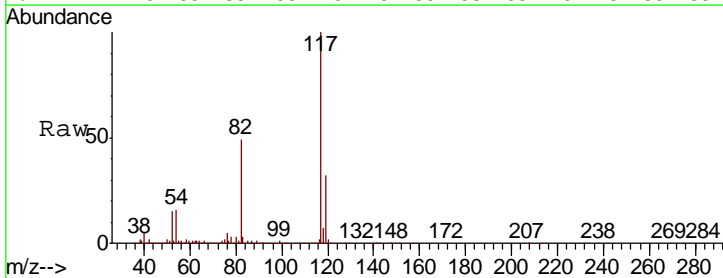
Instrument :
 MSVOA_X
 ClientSampled :
 SU-04-121218-B

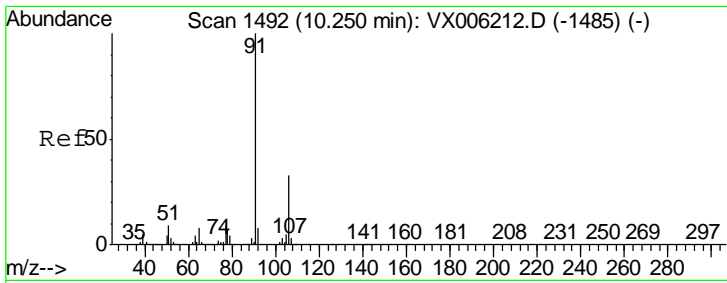
Tgt Ion	Resp	Lower	Upper
95	452583		
174	85.8	0.0	187.0
176	83.4	0.0	181.8



#63
 Chlorobenzene-d5
 Concen: 50.000 ug/l
 RT: 10.12 min Scan# 1470
 Delta R.T. 0.00 min
 Lab File: VX006503.D
 Acq: 13 Dec 2018 18:51

Tgt Ion	Resp	Lower	Upper
117	952496		
82	49.3	39.6	59.4
119	31.5	26.3	39.5

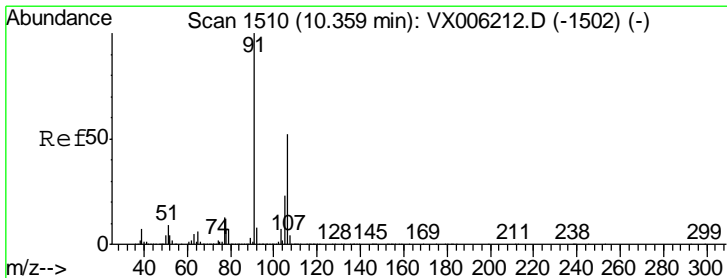
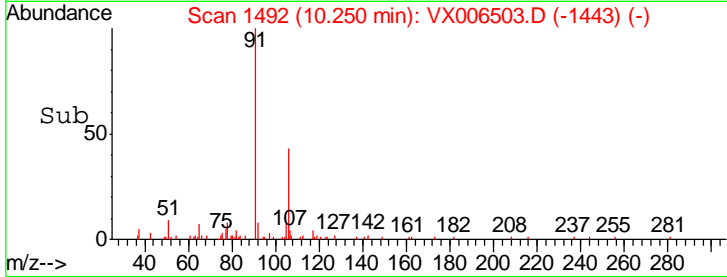
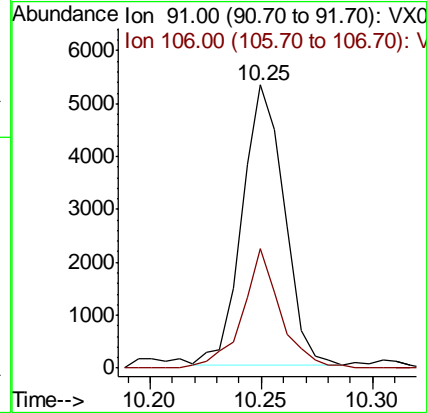
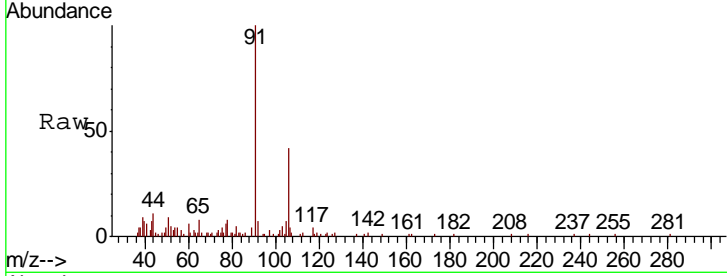




#67
 Ethyl Benzene
 Concen: 0.206 ug/l
 RT: 10.25 min Scan# 1492
 Delta R.T. 0.00 min
 Lab File: VX006503.D
 Acq: 13 Dec 2018 18:51

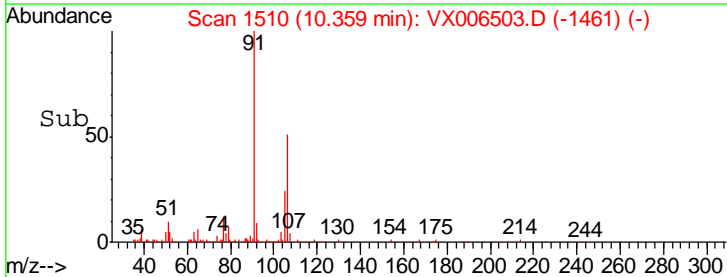
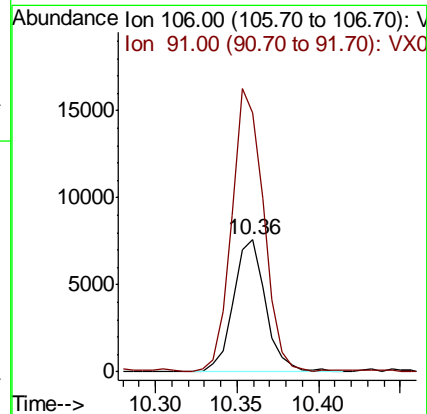
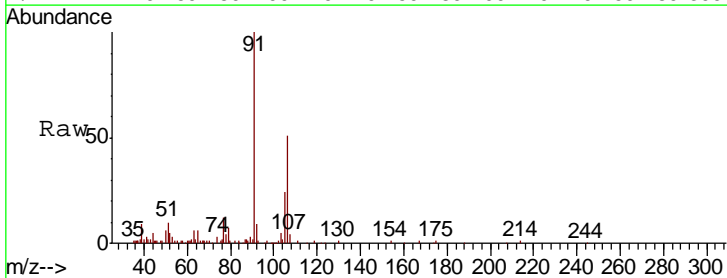
Instrument :
 MSVOA_X
 ClientSampled :
 SU-04-121218-B

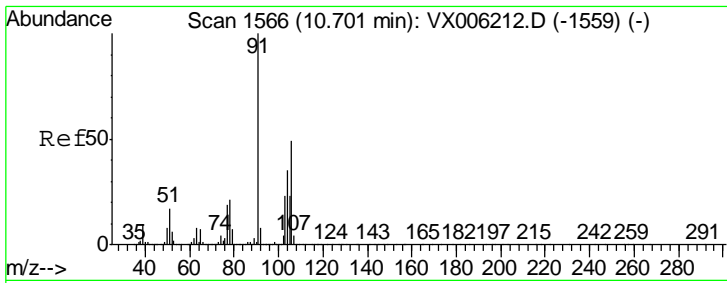
Tgt Ion: 91 Resp: 6924
 Ion Ratio Lower Upper
 91 100
 106 41.9 26.5 39.7#



#68
 m/p-Xylenes
 Concen: 0.774 ug/l
 RT: 10.36 min Scan# 1510
 Delta R.T. 0.00 min
 Lab File: VX006503.D
 Acq: 13 Dec 2018 18:51

Tgt Ion: 106 Resp: 10427
 Ion Ratio Lower Upper
 106 100
 91 211.3 155.2 232.8

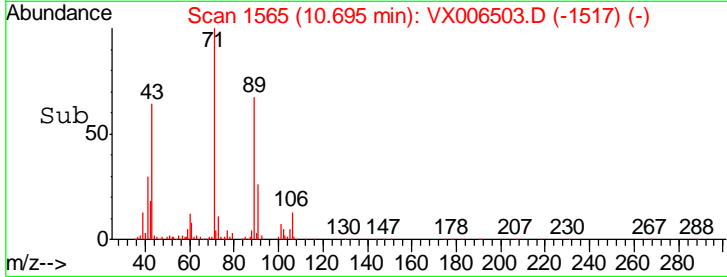
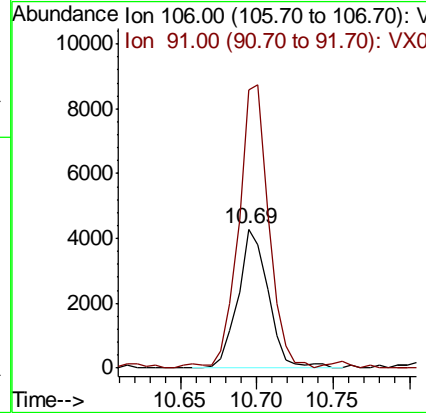
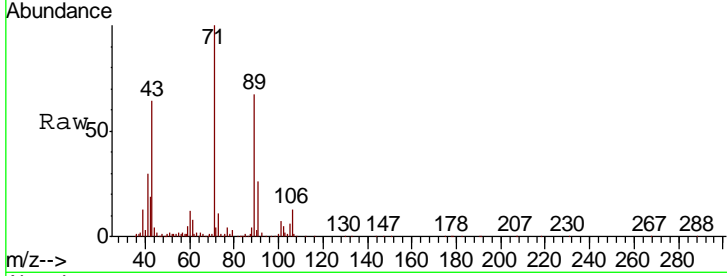




#69
 o-Xylene
 Concen: 0.442 ug/l
 RT: 10.69 min Scan# 1565
 Delta R.T. -0.01 min
 Lab File: VX006503.D
 Acq: 13 Dec 2018 18:51

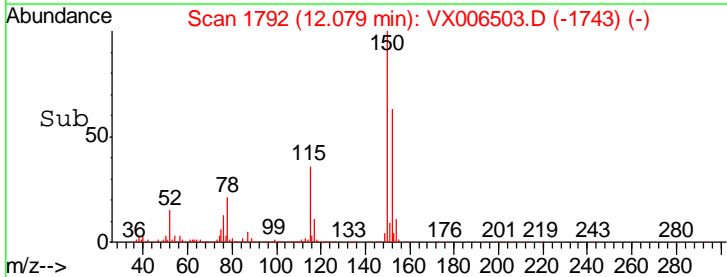
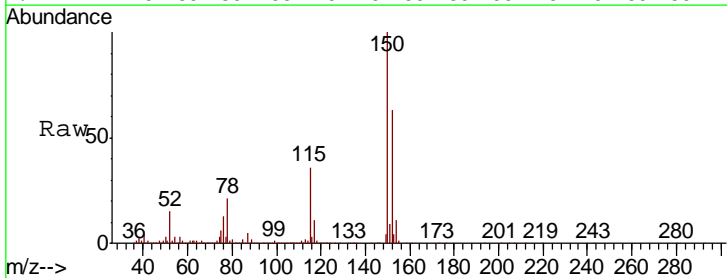
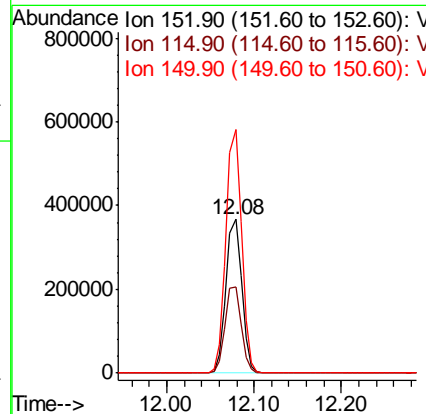
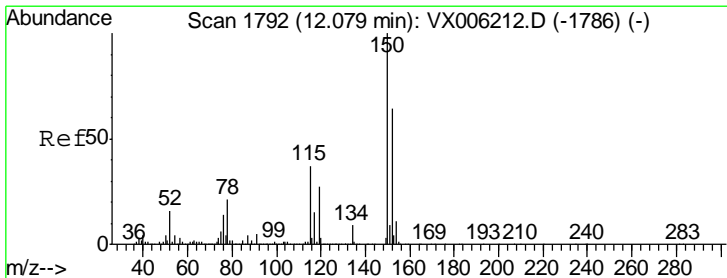
Instrument :
 MSVOA_X
 ClientSampled :
 SU-04-121218-B

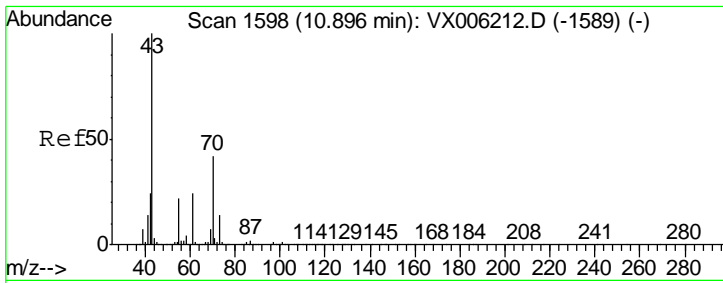
Tot Ion: 106 Resp: 5879
 Ion Ratio Lower Upper
 106 100
 91 203.4 101.8 305.6



#72
 1,4-Dichlorobenzene-d4
 Concen: 50.000 ug/l
 RT: 12.08 min Scan# 1792
 Delta R.T. 0.00 min
 Lab File: VX006503.D
 Acq: 13 Dec 2018 18:51

Tgt Ion: 152 Resp: 458862
 Ion Ratio Lower Upper
 152 100
 115 57.2 39.0 116.9
 150 156.7 0.0 345.8

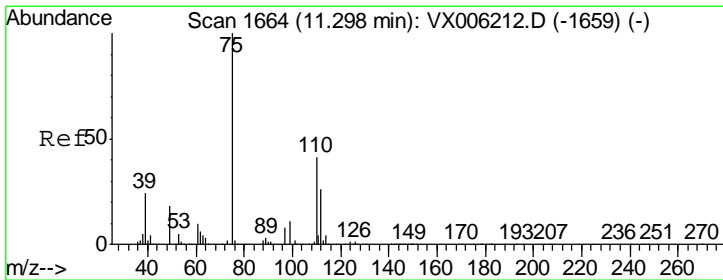
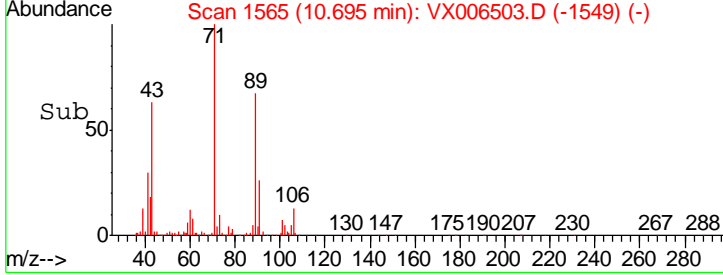
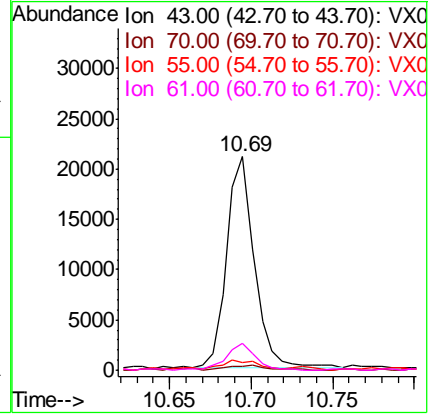
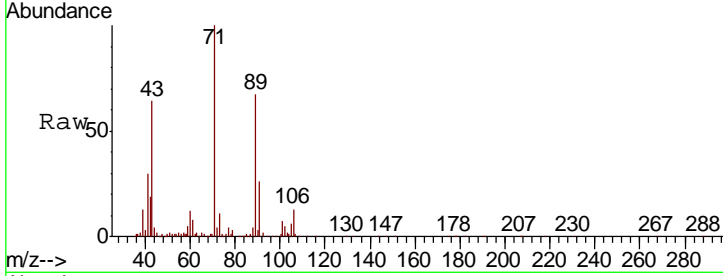




#74
 N-amyl acetate
 Concen: 1.813 ug/l
 RT: 10.69 min Scan# 1565
 Delta R.T. -0.20 min
 Lab File: VX006503.D
 Acq: 13 Dec 2018 18:51

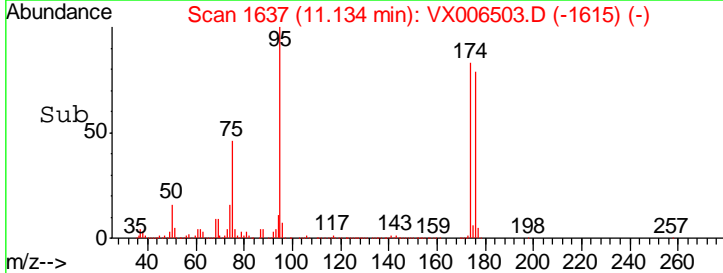
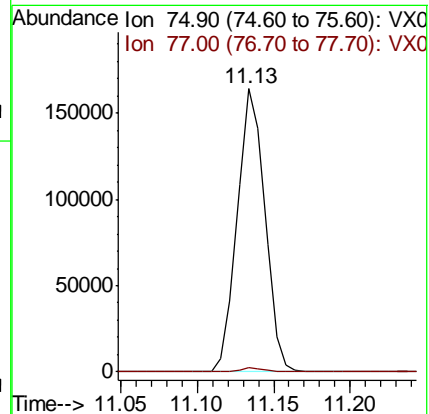
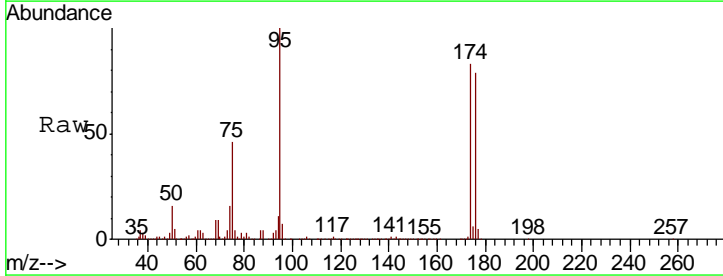
Instrument : MSVOA_X
 ClientSampled : SU-04-121218-B

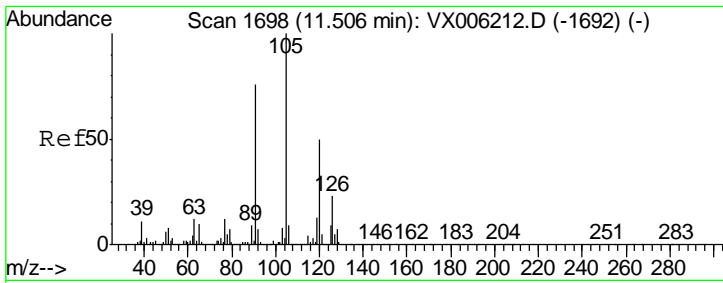
Tgt Ion	Resp	Lower	Upper
43	100		
70	3.5	34.1	51.1#
55	6.4	17.8	26.8#
61	13.8	19.7	29.5#



#76
 1,2,3-Trichloropropane
 Concen: 23.309 ug/l
 RT: 11.13 min Scan# 1637
 Delta R.T. -0.16 min
 Lab File: VX006503.D
 Acq: 13 Dec 2018 18:51

Tgt Ion	Resp	Lower	Upper
75	100		
77	1.3	19.9	59.7#

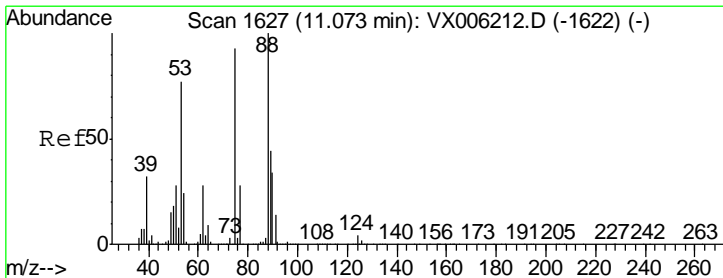
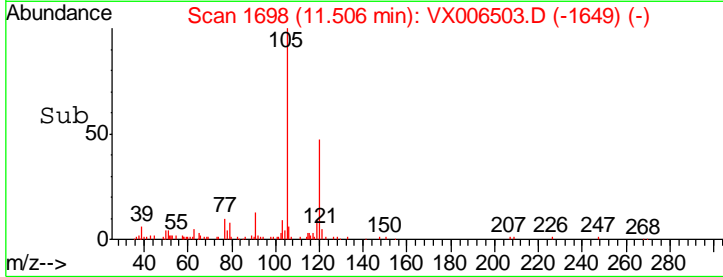
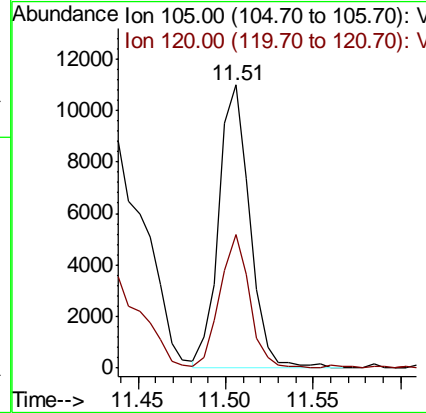
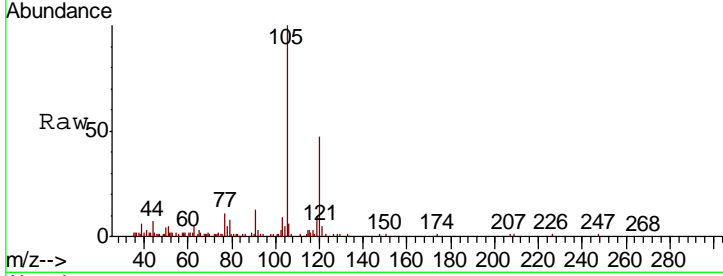




#80
 1,3,5-Trimethylbenzene
 Concen: 0.513 ug/l
 RT: 11.51 min Scan# 1698
 Delta R.T. 0.00 min
 Lab File: VX006503.D
 Acq: 13 Dec 2018 18:51

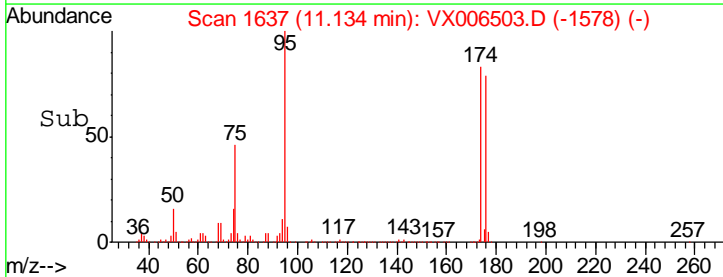
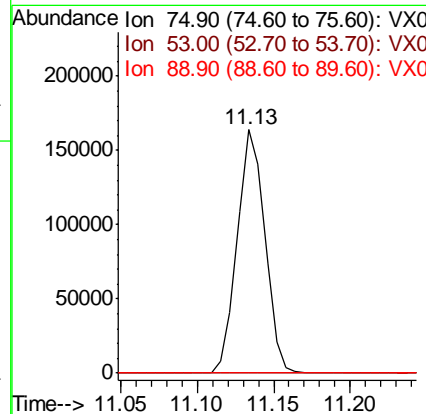
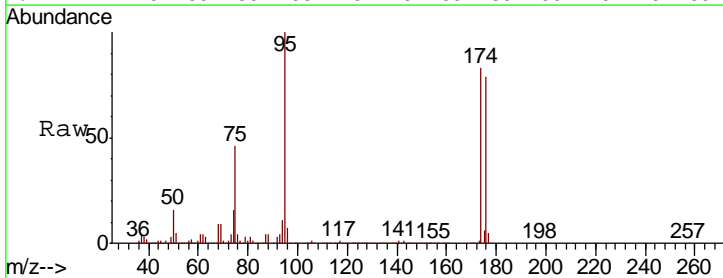
Instrument :
 MSVOA_X
 ClientSampled :
 SU-04-121218-B

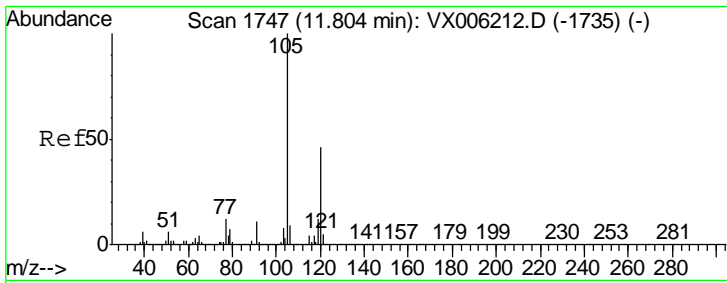
Tgt Ion	Resp	Lower	Upper
105	13532		
120	45.2	25.4	76.0



#81
 trans-1,4-Dichloro-2-butene
 Concen: 54.700 ug/l
 RT: 11.13 min Scan# 1637
 Delta R.T. 0.06 min
 Lab File: VX006503.D
 Acq: 13 Dec 2018 18:51

Tgt Ion	Resp	Lower	Upper
75	206442		
53	0.1	64.4	96.6#
89	0.0	44.2	66.4#

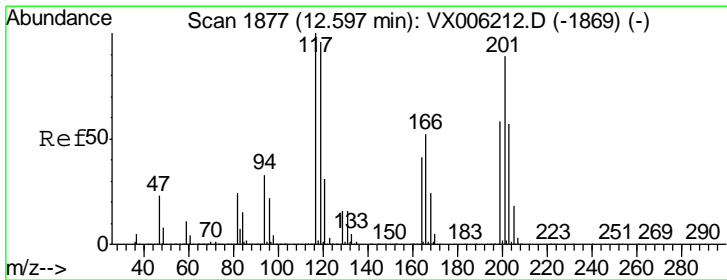
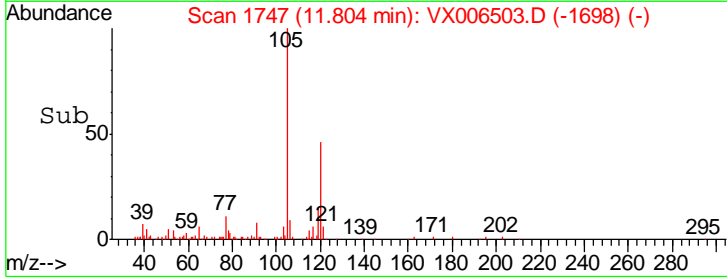
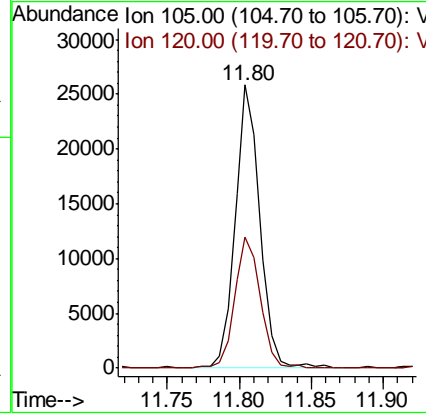
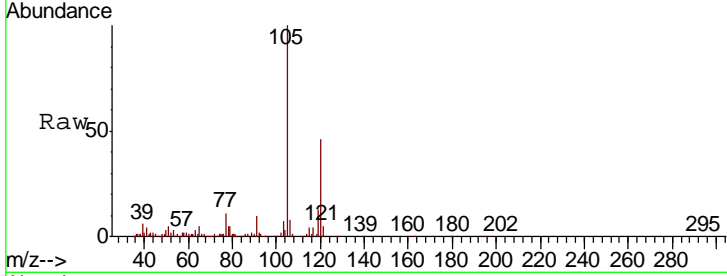




#84
 1,2,4-Trimethylbenzene
 Concen: 1.140 ug/l
 RT: 11.80 min Scan# 1747
 Delta R.T. 0.00 min
 Lab File: VX006503.D
 Acq: 13 Dec 2018 18:51

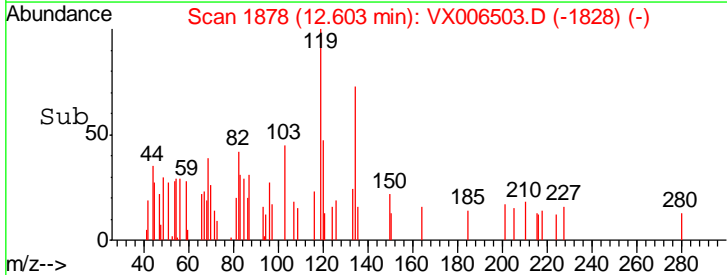
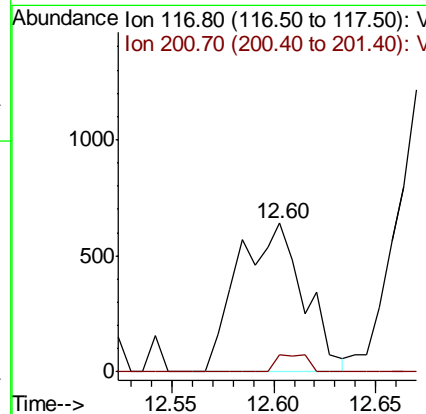
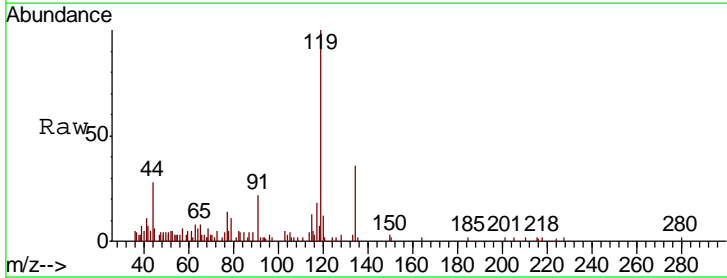
Instrument :
 MSVOA_X
 ClientSampled :
 SU-04-121218-B

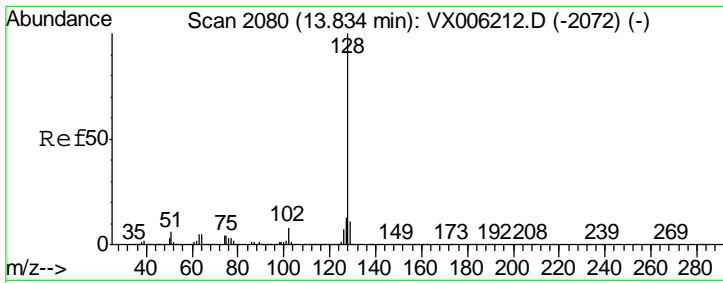
Tgt Ion:105 Resp: 31037
 Ion Ratio Lower Upper
 105 100
 120 48.0 23.4 70.0



#90
 Hexachloroethane
 Concen: 0.245 ug/l
 RT: 12.60 min Scan# 1878
 Delta R.T. 0.01 min
 Lab File: VX006503.D
 Acq: 13 Dec 2018 18:51

Tgt Ion:117 Resp: 1438
 Ion Ratio Lower Upper
 117 100
 201 5.4 44.7 134.1#





#95
 Naphthalene
 Concen: 9.541 ug/l
 RT: 13.83 min Scan# 2080
 Delta R.T. 0.00 min
 Lab File: VX006503.D
 Acq: 13 Dec 2018 18:51

Instrument :
 MSVOA_X
 ClientSampled :
 SU-04-121218-B

Tot Ion	Ion	Ratio	Lower	Upper
336246	128	100		
	127	13.0	10.2	15.4
	129	11.2	8.9	13.3

