

Data Path : Z:\voasrv\HPCHEM1\MSVOA_X\Data\VX121322\
 Data File : VX033402.D
 Acq On : 13 Dec 2022 18:58
 Operator : JC/MD
 Sample : N6001-17
 Misc : 5.0mL/MSVOA_X/WATER
 ALS Vial : 24 Sample Multiplier: 1

Instrument :
 MSVOA_X
 ClientSampleId :
 MW-16

Integration Parameters: RTEINT.P

Integrator: RTE
 Smoothing : ON Filtering: 5
 Sampling : 1 Min Area: 3 % of largest Peak
 Start Thrs: 0.2 Max Peaks: 100
 Stop Thrs : 0 Peak Location: TOP

If leading or trailing edge < 100 prefer < Baseline drop else tangent >
 Peak separation: 5

Method : Z:\voasrv\HPCHEM1\MSVOA_X\Method\82X120722W.M
 Title : SW846 8260

Signal : TIC: VX033402.D\data.ms

peak #	R.T. min	first scan	max scan	last scan	PK TY	peak height	corr. area	corr. % max.	% of total
1	1.252	21	27	44	rBV	17531	46074	9.18%	1.777%
2	2.081	156	163	176	rVB	3063	8534	1.70%	0.329%
3	5.391	693	706	719	rBV2	46906	137138	27.33%	5.289%
4	5.556	721	733	747	rVV	123037	351218	69.99%	13.546%
5	5.958	789	799	808	rBV	36189	96854	19.30%	3.735%
6	6.037	809	812	823	rVB3	2394	5584	1.11%	0.215%
7	6.763	921	931	943	rBV	184279	435519	86.79%	16.797%
8	8.647	1234	1240	1250	rBV	140665	221473	44.14%	8.542%
9	10.055	1465	1471	1479	rBV	367869	501806	100.00%	19.354%
10	11.079	1634	1639	1652	rBV	254807	320150	63.80%	12.347%
11	12.024	1788	1794	1801	rBV	373491	468484	93.36%	18.068%

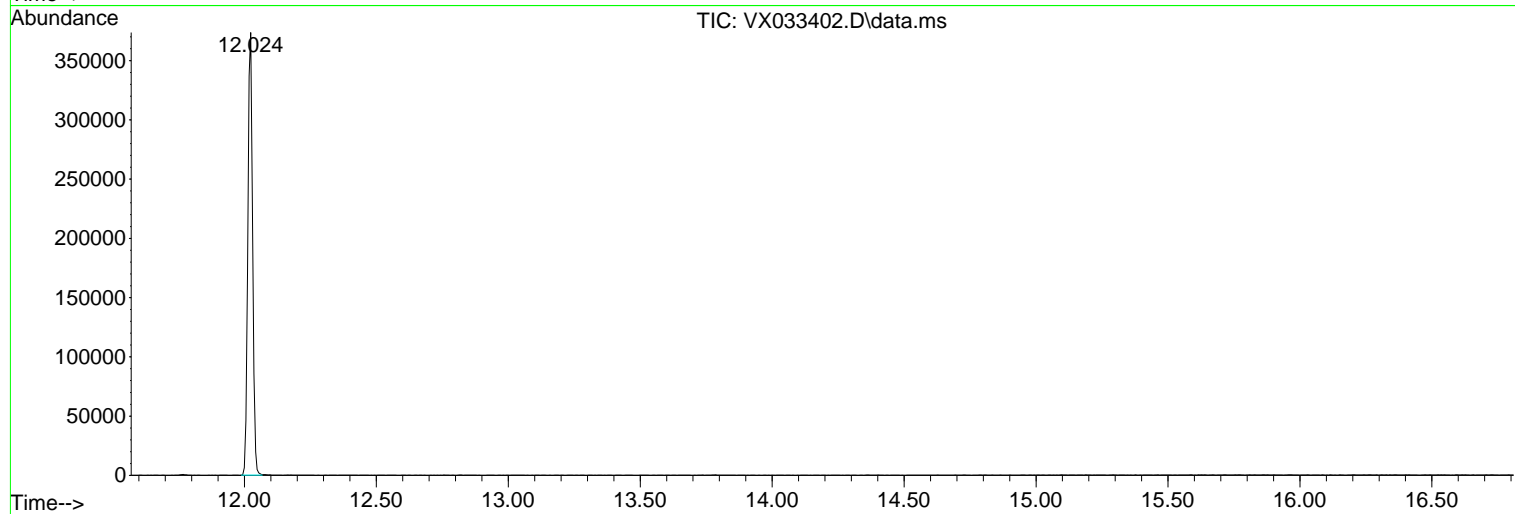
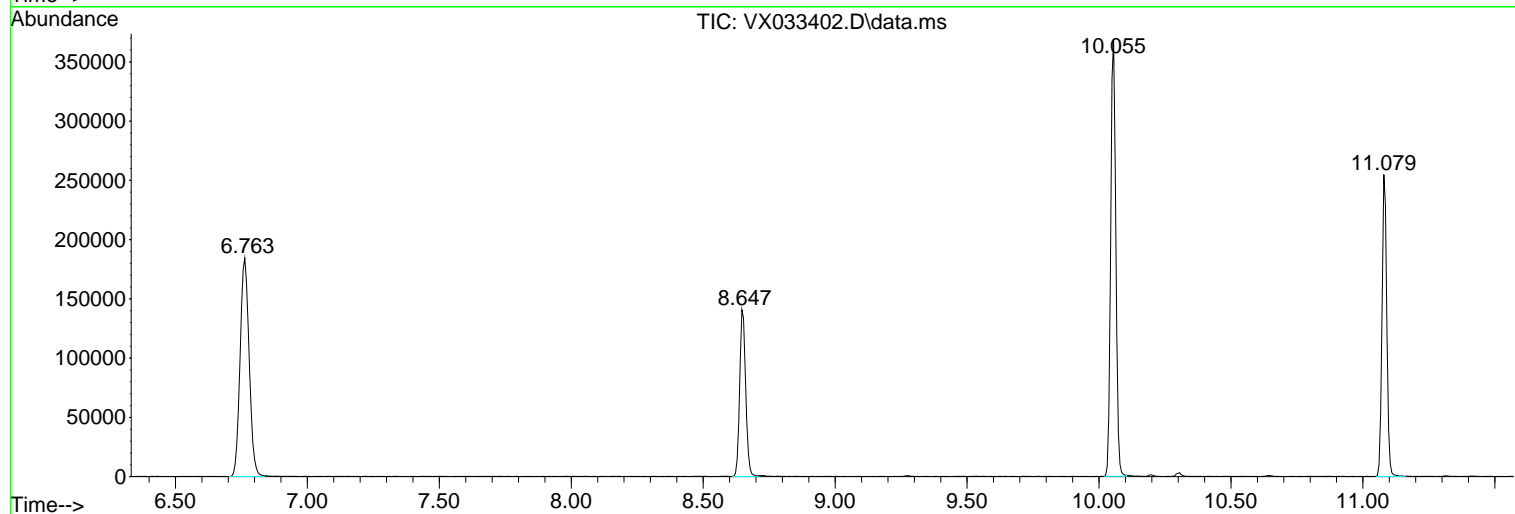
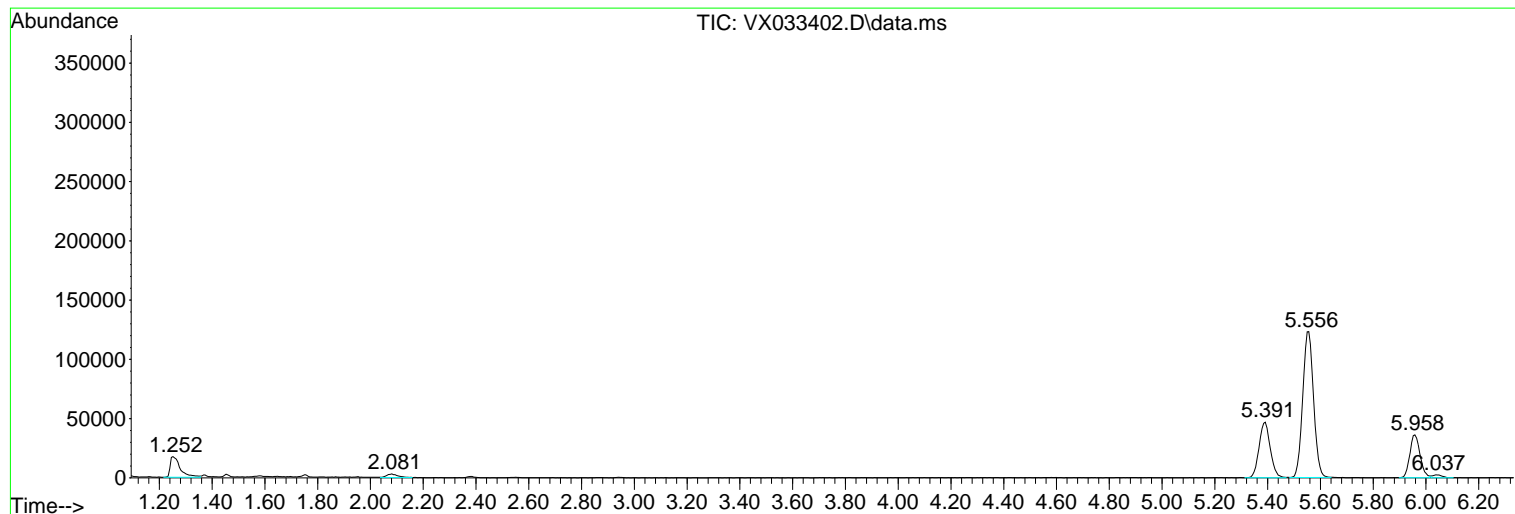
Sum of corrected areas: 2592834

Data Path : Z:\voasrv\HPCHEM1\MSVOA_X\Data\VX121322\
 Data File : VX033402.D
 Acq On : 13 Dec 2022 18:58
 Operator : JC/MD
 Sample : N6001-17
 Misc : 5.0mL/MSVOA_X/WATER
 ALS Vial : 24 Sample Multiplier: 1

Instrument :
 MSVOA_X
 ClientSampleId :
 MW-16

Quant Method : Z:\voasrv\HPCHEM1\MSVOA_X\Method\82X120722W.M
 Quant Title : SW846 8260

TIC Library : C:\Database\NIST20.L
 TIC Integration Parameters: LSCINT.P



Data Path : Z:\voasrv\HPCHEM1\MSVOA_X\Data\VX121322\
 Data File : VX033402.D
 Acq On : 13 Dec 2022 18:58
 Operator : JC/MD
 Sample : N6001-17
 Misc : 5.0mL/MSVOA_X/WATER
 ALS Vial : 24 Sample Multiplier: 1

Instrument :
 MSVOA_X
 ClientSampleId :
 MW-16

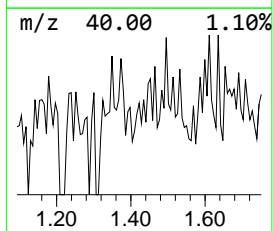
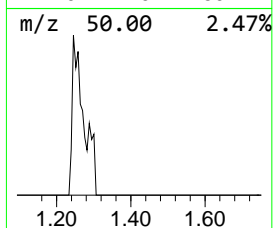
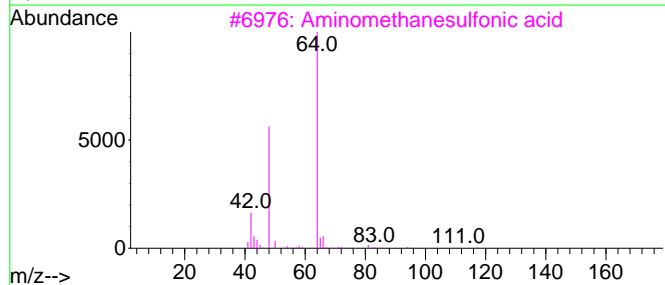
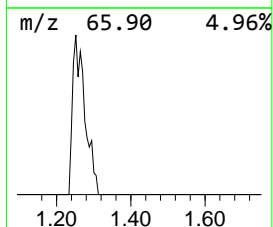
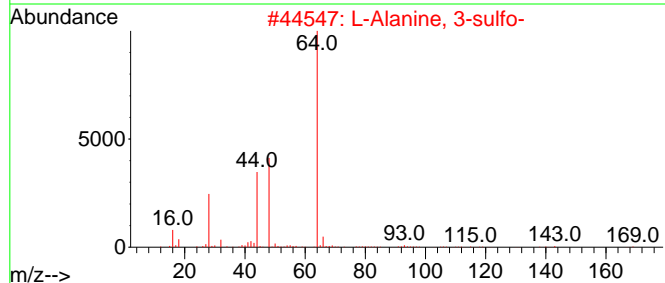
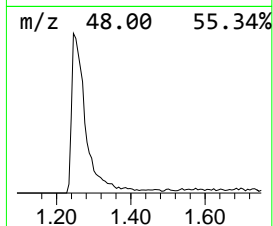
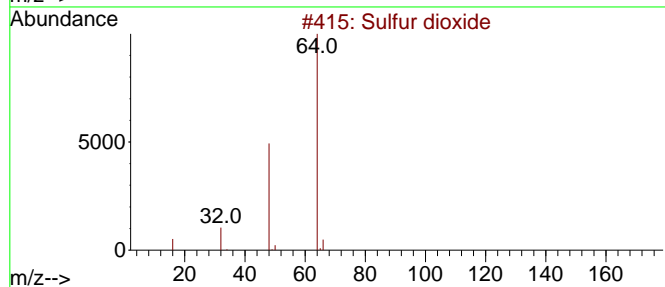
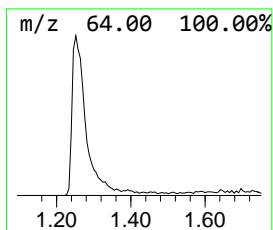
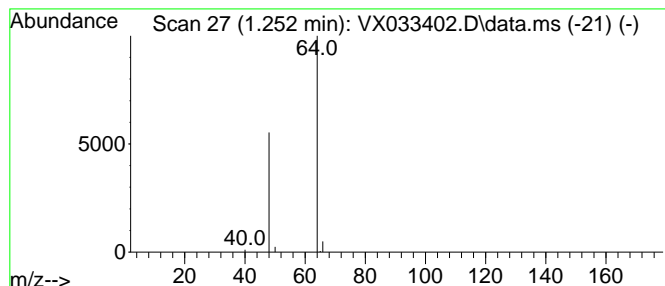
Quant Method : Z:\voasrv\HPCHEM1\MSVOA_X\Method\82X120722W.M
 Quant Title : SW846 8260

TIC Library : C:\Database\NIST20.L
 TIC Integration Parameters: LSCINT.P

 Peak Number 1 Sulfur dioxide Concentration Rank 1

R.T.	EstConc	Area	Relative to ISTD	R.T.
1.252	6.56 ug/l	46074	Pentafluorobenzene	5.550

Hit#	of 5	Tentative ID	MW	MolForm	CAS#	Qual
1		Sulfur dioxide	64	O2S	007446-09-5	74
2		L-Alanine, 3-sulfo-	169	C3H7NO5S	000498-40-8	9
3		Aminomethanesulfonic acid	111	CH5NO3S	013881-91-9	9
4		Ethene, 1,1-difluoro-	64	C2H2F2	000075-38-7	4
5		Ethyl Chloride	64	C2H5Cl	000075-00-3	3



Data Path : Z:\voasrv\HPCHEM1\MSVOA_X\Data\VX121322\
Data File : VX033402.D
Acq On : 13 Dec 2022 18:58
Operator : JC/MD
Sample : N6001-17
Misc : 5.0mL/MSVOA_X/WATER
ALS Vial : 24 Sample Multiplier: 1

Instrument :
MSVOA_X
ClientSampleId :
MW-16

Quant Method : Z:\voasrv\HPCHEM1\MSVOA_X\Method\82X120722W.M
Quant Title : SW846 8260

TIC Library : C:\Database\NIST20.L
TIC Integration Parameters: LSCINT.P

TIC Top Hit name	RT	EstConc	Units	Response	--Internal Standard--			
					#	RT	Resp	Conc
Sulfur dioxide	1.252	6.6	ug/l	46074	1	5.550	351218	50.0