

Data Path : Z:\VOASRV\HPCHEM1\MSVOA_X\DATA\VX121420\
 Data File : VX019992.D
 Acq On : 14 Dec 2020 17:25
 Operator : JC/MD
 Sample : L5022-02
 Misc : 5.0mL/MSVOA_X/WATER
 ALS Vial : 18 Sample Multiplier: 1

Instrument :
 MSVOA_X
 ClientSampleId :
 WCS-OH-E6

Quant Time: Dec 15 00:25:01 2020
 Quant Method : Z:\VOASRV\HPCHEM1\MSVOA_X\METHOD\82X120420W.M
 Quant Title : SW846 8260
 QLast Update : Fri Dec 04 15:32:53 2020
 Response via : Initial Calibration

Internal Standards	R.T.	QIon	Response	Conc	Units	Dev(Min)
1) Pentafluorobenzene	5.62	168	331530	50.00	ug/l	0.00
34) 1,4-Difluorobenzene	6.83	114	551795	50.00	ug/l	0.00
63) Chlorobenzene-d5	10.09	117	516298	50.00	ug/l	0.00
72) 1,4-Dichlorobenzene-d4	12.06	152	226927	50.00	ug/l	0.00

System Monitoring Compounds

33) 1,2-Dichloroethane-d4	6.03	65	208363	47.82	ug/l	0.00
Spiked Amount	50.000	Range	61 - 141	Recovery	=	95.64%
35) Dibromofluoromethane	5.46	113	169232	47.45	ug/l	0.00
Spiked Amount	50.000	Range	69 - 133	Recovery	=	94.90%
50) Toluene-d8	8.70	98	673542	49.47	ug/l	0.00
Spiked Amount	50.000	Range	65 - 126	Recovery	=	98.94%
62) 4-Bromofluorobenzene	11.12	95	241844	46.67	ug/l	0.00
Spiked Amount	50.000	Range	58 - 135	Recovery	=	93.34%

Target Compounds

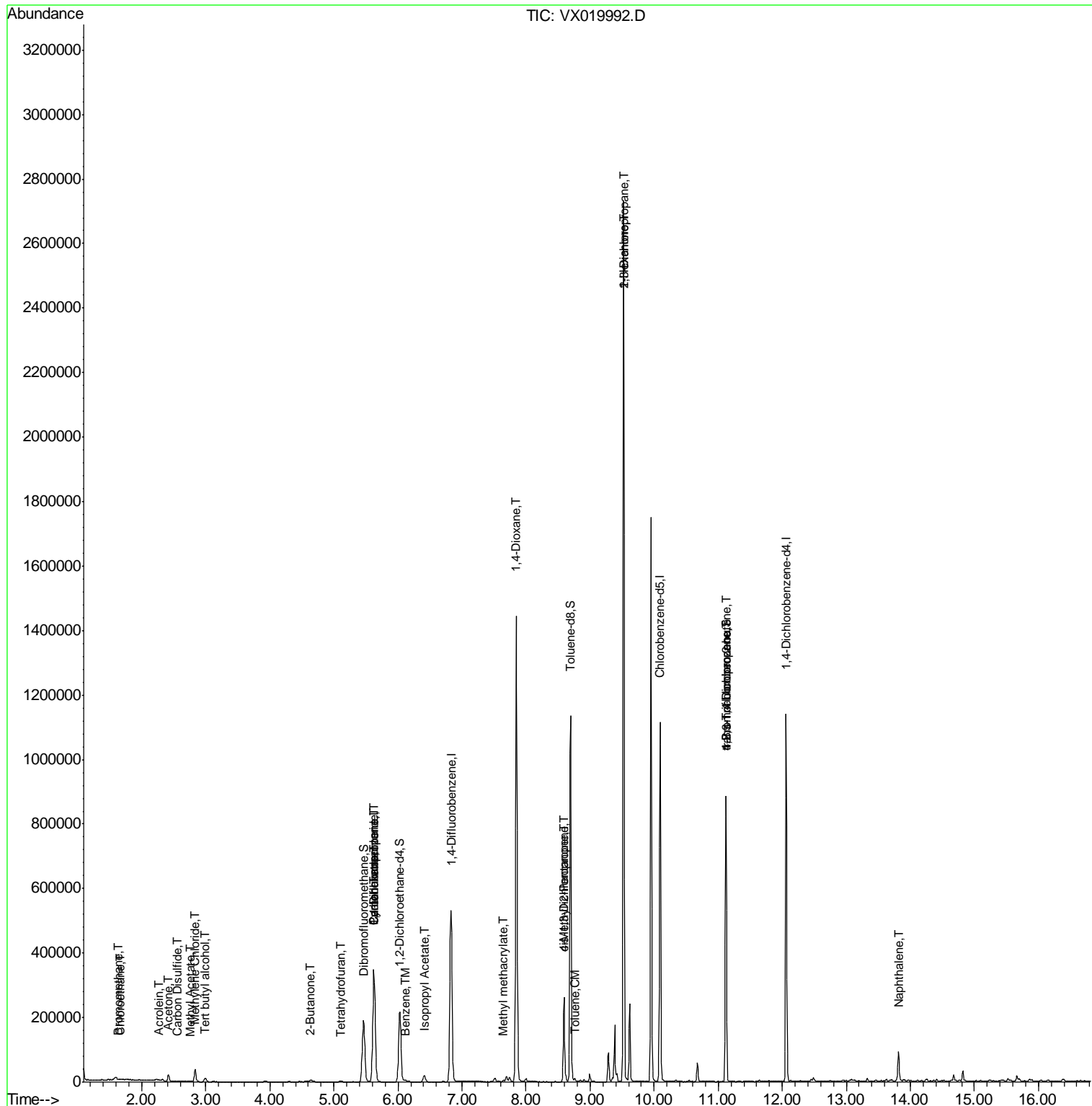
						Qvalue
5) Bromomethane	1.64	94	274	0.219	ug/l	89
6) Chloroethane	1.67	64	1208	0.534	ug/l #	43
11) Tert butyl alcohol	2.99	59	6582	4.785	ug/l #	78
13) Acrolein	2.26	56	184	0.383	ug/l #	59
16) Acetone	2.42	43	21129	12.901	ug/l	98
17) Carbon Disulfide	2.55	76	2241	0.257	ug/l #	94
18) Methyl Acetate	2.75	43	1967	0.491	ug/l	97
20) Methylene Chloride	2.83	84	18156	3.534	ug/l	95
25) 2-Butanone	4.64	43	5140	2.042	ug/l	97
29) Tetrahydrofuran	5.09	42	1905	1.175	ug/l #	85
31) Cyclohexane	5.62	56	6298	1.162	ug/l #	1
36) 1,1-Dichloropropene	5.63	75	25605	5.135	ug/l #	48
38) Carbon Tetrachloride	5.62	117	33017	6.762	ug/l #	17
40) Benzene	6.11	78	4689	0.308	ug/l	98
43) Isopropyl Acetate	6.41	43	25238	3.083	ug/l	99
48) Methyl methacrylate	7.65	41	6570	1.632	ug/l #	10
49) 1,4-Dioxane	7.84	88	253	2.594	ug/l #	1
51) 4-Methyl-2-Pentanone	8.59	43	84592	16.928	ug/l #	47
52) Toluene	8.77	92	2647	0.278	ug/l	93
54) cis-1,3-Dichloropropene	8.59	75	43865	7.133	ug/l #	60
57) 1,3-Dichloropropane	9.52	76	24201	3.692	ug/l #	43
59) 2-Hexanone	9.52	43	297876	76.902	ug/l #	46
76) 1,2,3-Trichloropropane	11.12	75	116560	22.902	ug/l #	39
81) trans-1,4-Dichloro-2-buten	11.12	75	116560	66.205	ug/l #	12
95) Naphthalene	13.82	128	63834	4.261	ug/l	99

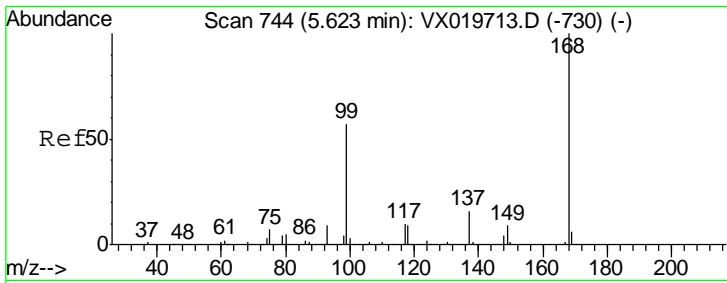
(#) = qualifier out of range (m) = manual integration (+) = signals summed

Data Path : Z:\VOASRV\HPCHEM1\MSVOA_X\DATA\VX121420\
 Data File : VX019992.D
 Acq On : 14 Dec 2020 17:25
 Operator : JC/MD
 Sample : L5022-02
 Misc : 5.0mL/MSVOA_X/WATER
 ALS Vial : 18 Sample Multiplier: 1

Instrument :
 MSVOA_X
 ClientSampleId :
 WCS-OH-E6

Quant Time: Dec 15 00:25:01 2020
 Quant Method : Z:\VOASRV\HPCHEM1\MSVOA_X\METHOD\82X120420W.M
 Quant Title : SW846 8260
 QLast Update : Fri Dec 04 15:32:53 2020
 Response via : Initial Calibration

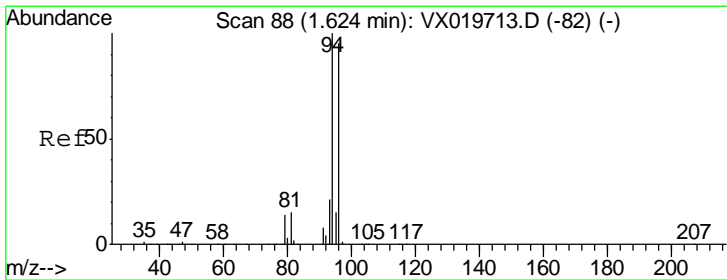
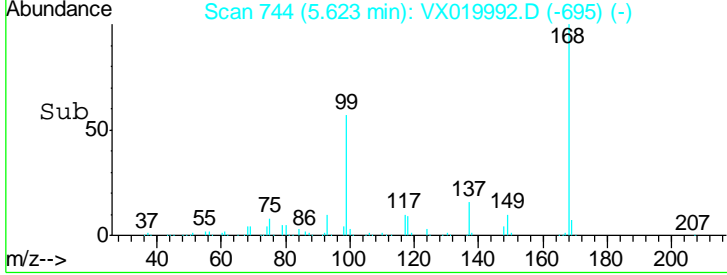
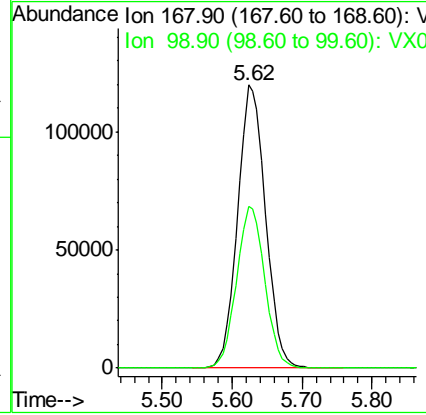
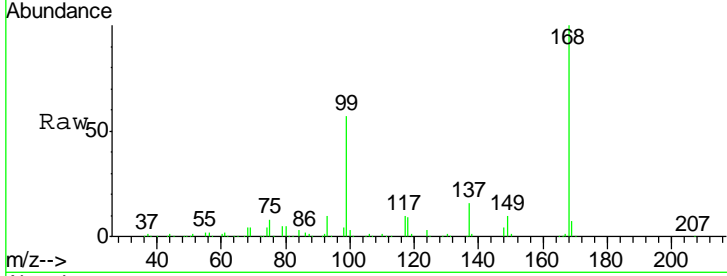




#1
 Pentafluorobenzene
 Concen: 50.000 ug/l
 RT: 5.62 min Scan# 744
 Delta R.T. -0.00 min
 Lab File: VX019992.D
 Acq: 14 Dec 2020 17:25

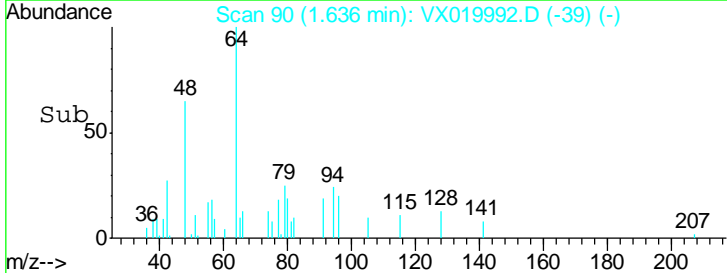
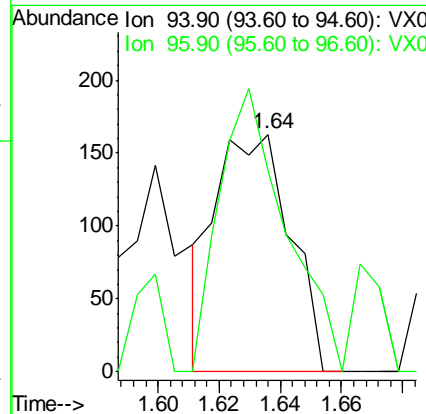
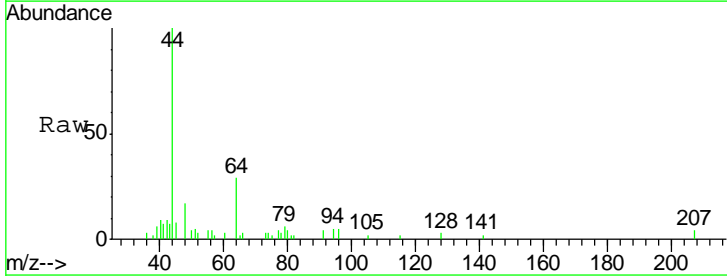
Instrument : MSVOA_X
 ClientSampled : WCS-OH-E6

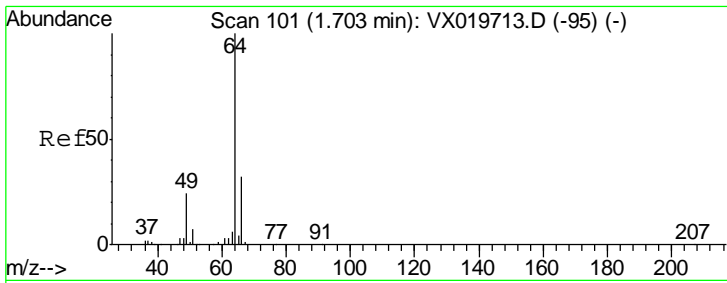
Tgt Ion: 168 Resp: 331530
 Ion Ratio Lower Upper
 168 100
 99 57.1 45.8 68.6



#5
 Bromomethane
 Concen: 0.219 ug/l
 RT: 1.64 min Scan# 90
 Delta R.T. 0.01 min
 Lab File: VX019992.D
 Acq: 14 Dec 2020 17:25

Tgt Ion: 94 Resp: 274
 Ion Ratio Lower Upper
 94 100
 96 84.7 76.4 114.6

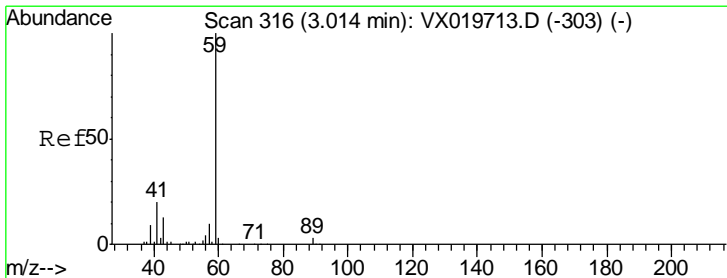
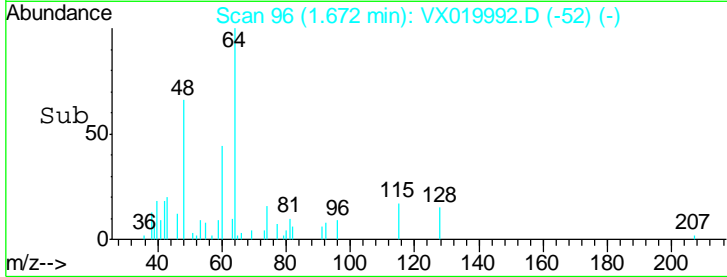
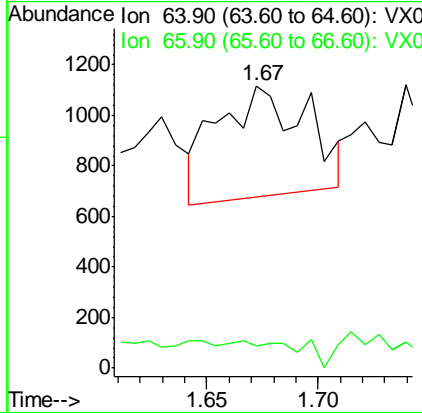
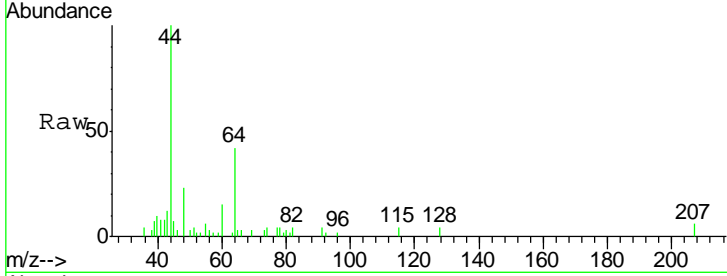




#6
 Chloroethane
 Concen: 0.534 ug/l
 RT: 1.67 min Scan# 96
 Delta R.T. -0.03 min
 Lab File: VX019992.D
 Acq: 14 Dec 2020 17:25

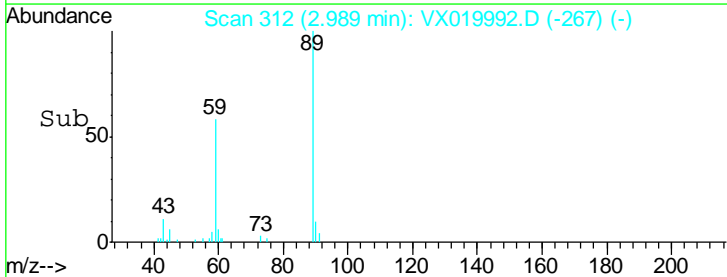
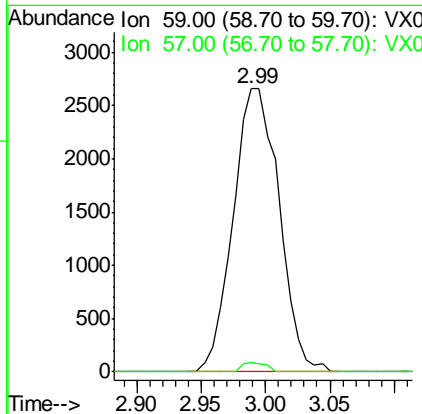
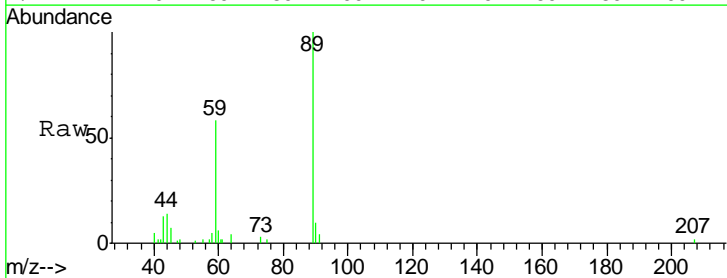
Instrument :
 MSVOA_X
 ClientSampled :
 WCS-OH-E6

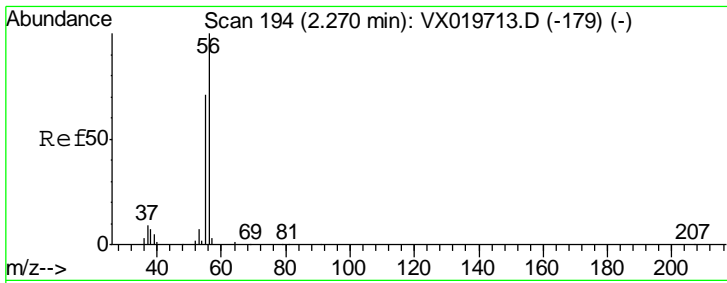
Tgt Ion: 64 Resp: 1208
 Ion Ratio Lower Upper
 64 100
 66 0.0 25.4 38.0#



#11
 Tert butyl alcohol
 Concen: 4.785 ug/l
 RT: 2.99 min Scan# 312
 Delta R.T. -0.02 min
 Lab File: VX019992.D
 Acq: 14 Dec 2020 17:25

Tgt Ion: 59 Resp: 6582
 Ion Ratio Lower Upper
 59 100
 57 1.6 7.8 11.8#

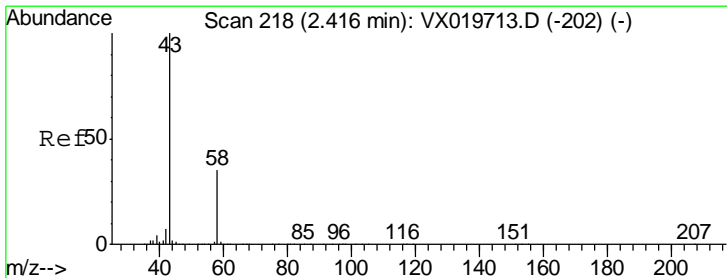
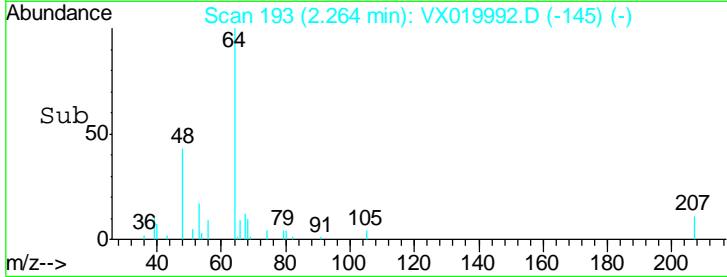
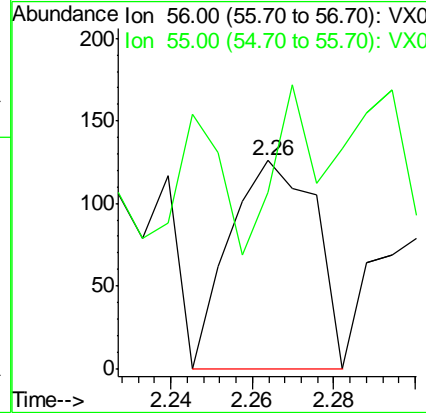
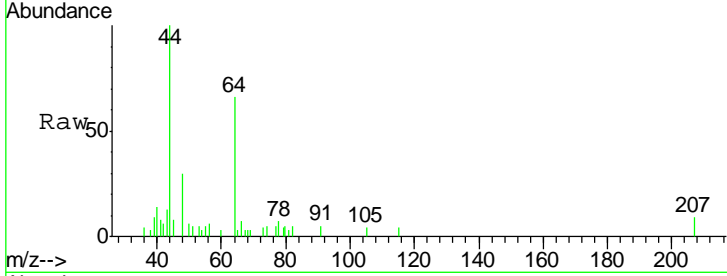




#13
 Acrolein
 Concen: 0.383 ug/l
 RT: 2.26 min Scan# 193
 Delta R.T. -0.01 min
 Lab File: VX019992.D
 Acq: 14 Dec 2020 17:25

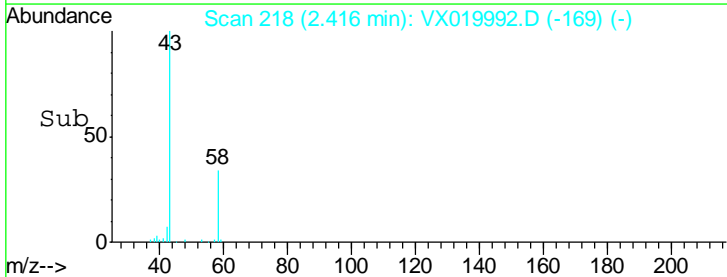
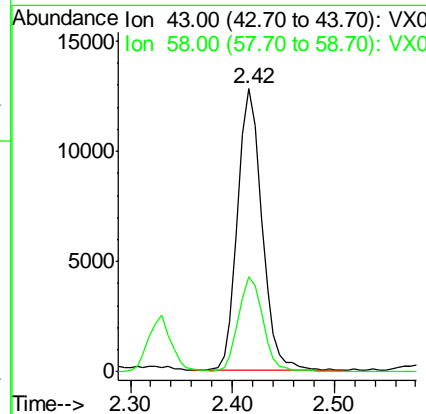
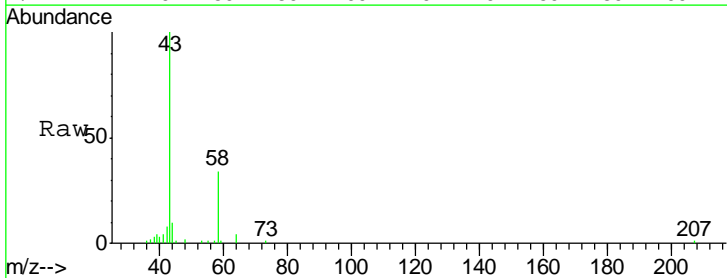
Instrument :
 MSVOA_X
 ClientSampled :
 WCS-OH-E6

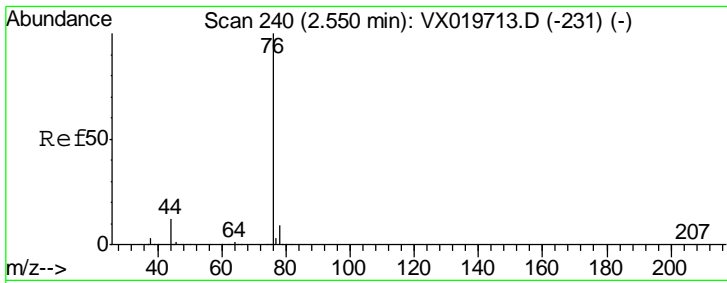
Tgt Ion: 56 Resp: 184
 Ion Ratio Lower Upper
 56 100
 55 36.4 56.4 84.6#



#16
 Acetone
 Concen: 12.901 ug/l
 RT: 2.42 min Scan# 218
 Delta R.T. -0.00 min
 Lab File: VX019992.D
 Acq: 14 Dec 2020 17:25

Tgt Ion: 43 Resp: 21129
 Ion Ratio Lower Upper
 43 100
 58 33.8 27.8 41.8

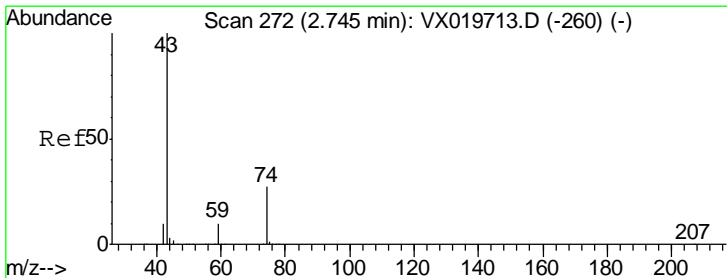
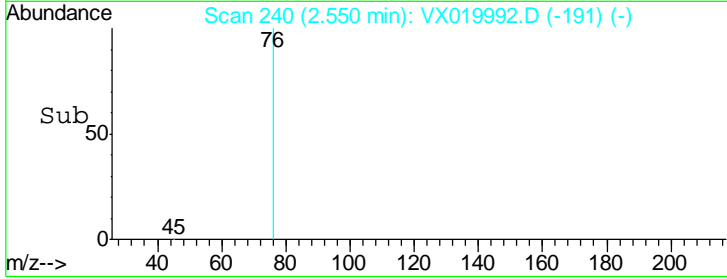
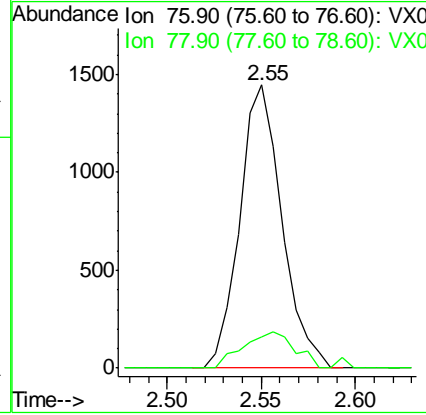
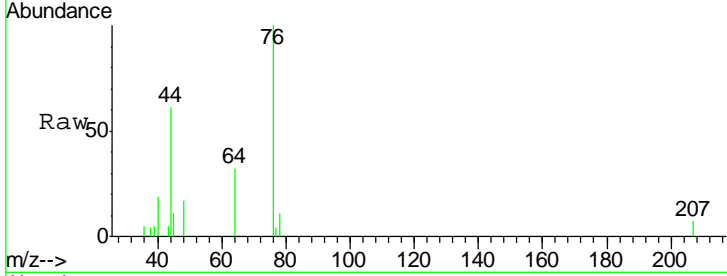




#17
 Carbon Disulfide
 Concen: 0.257 ug/l
 RT: 2.55 min Scan# 240
 Delta R.T. -0.00 min
 Lab File: VX019992.D
 Acq: 14 Dec 2020 17:25

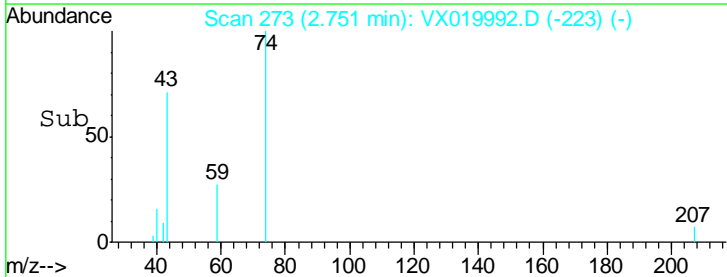
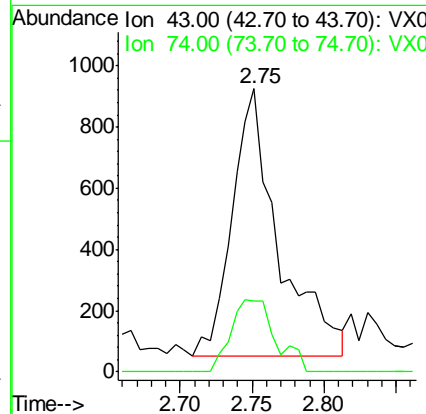
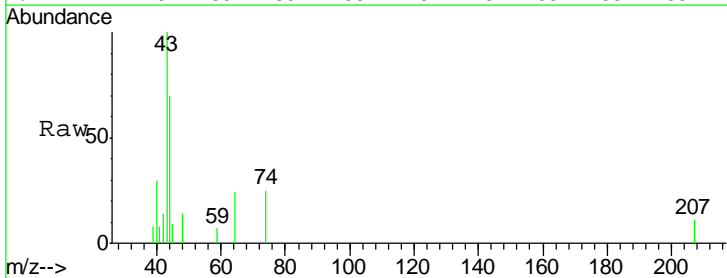
Instrument :
 MSVOA_X
 ClientSampled :
 WCS-OH-E6

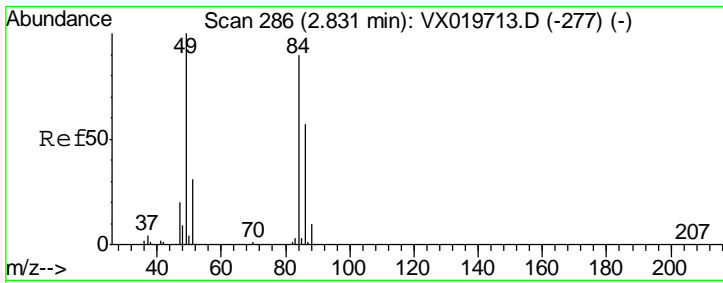
Tgt Ion: 76 Resp: 2241
 Ion Ratio Lower Upper
 76 100
 78 11.0 7.2 10.8#



#18
 Methyl Acetate
 Concen: 0.491 ug/l
 RT: 2.75 min Scan# 273
 Delta R.T. 0.01 min
 Lab File: VX019992.D
 Acq: 14 Dec 2020 17:25

Tgt Ion: 43 Resp: 1967
 Ion Ratio Lower Upper
 43 100
 74 25.9 21.9 32.9

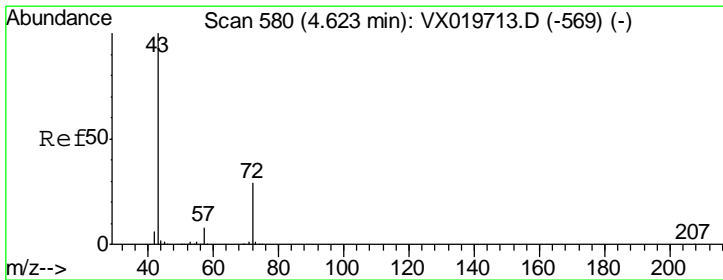
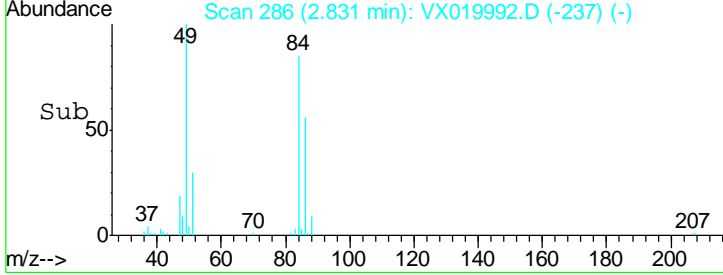
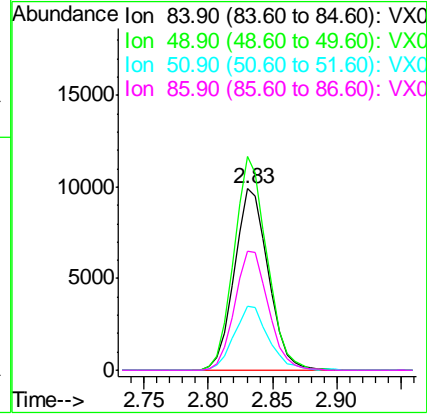
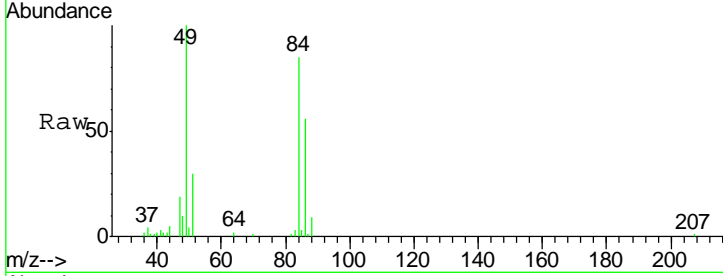




#20
 Methylene Chloride
 Concen: 3.534 ug/l
 RT: 2.83 min Scan# 286
 Delta R.T. 0.00 min
 Lab File: VX019992.D
 Acq: 14 Dec 2020 17:25

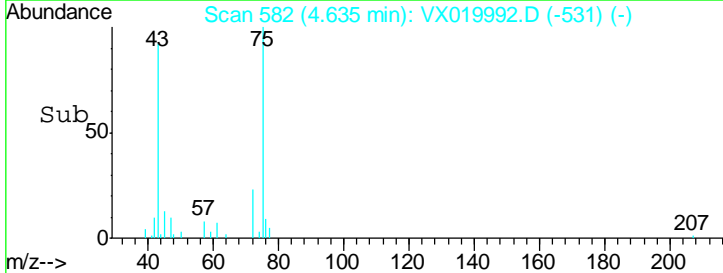
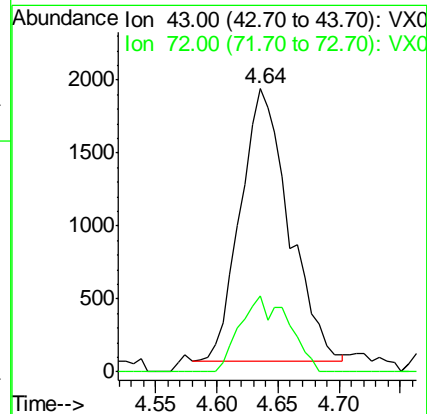
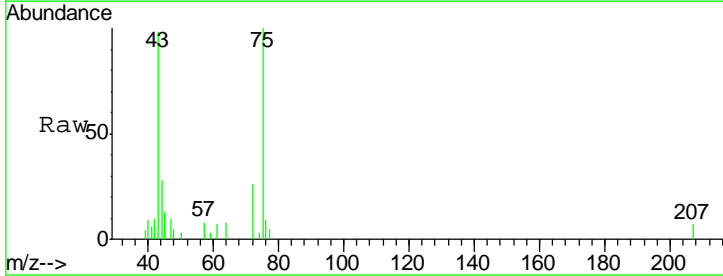
Instrument : MSVOA_X
 ClientSampled : WCS-OH-E6

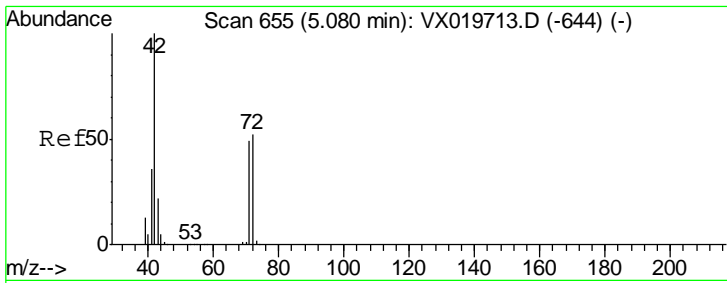
Tgt Ion	Resp	Lower	Upper
84	18156		
49	117.8	88.6	132.8
51	35.4	27.0	40.6
86	66.0	50.3	75.5



#25
 2-Butanone
 Concen: 2.042 ug/l
 RT: 4.64 min Scan# 582
 Delta R.T. 0.01 min
 Lab File: VX019992.D
 Acq: 14 Dec 2020 17:25

Tgt Ion	Resp	Lower	Upper
43	5140		
72	27.8	23.7	35.5

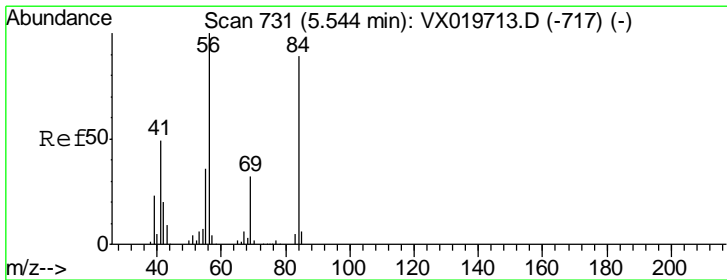
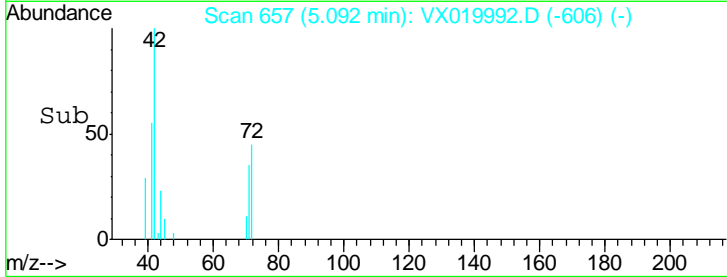
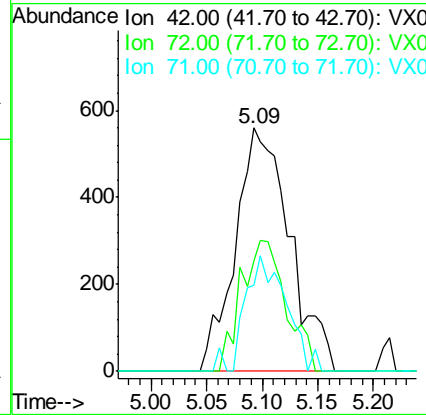
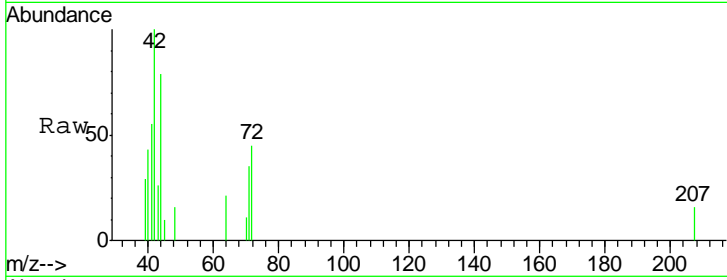




#29
 Tetrahydrofuran
 Concen: 1.175 ug/l
 RT: 5.09 min Scan# 657
 Delta R.T. 0.01 min
 Lab File: VX019992.D
 Acq: 14 Dec 2020 17:25

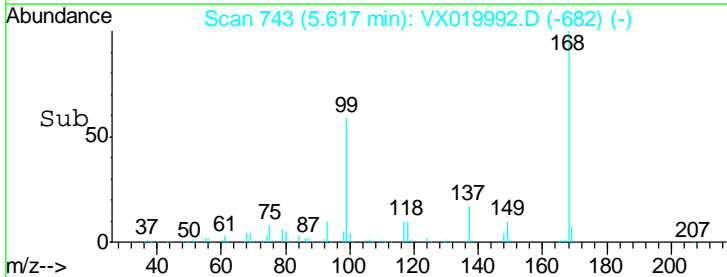
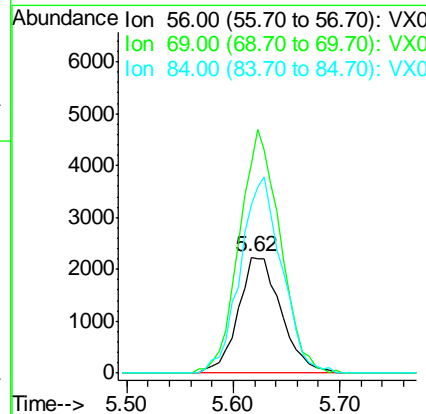
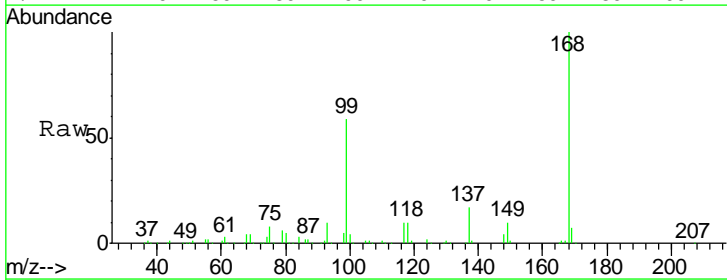
Instrument :
 MSVOA_X
 ClientSampled :
 WCS-OH-E6

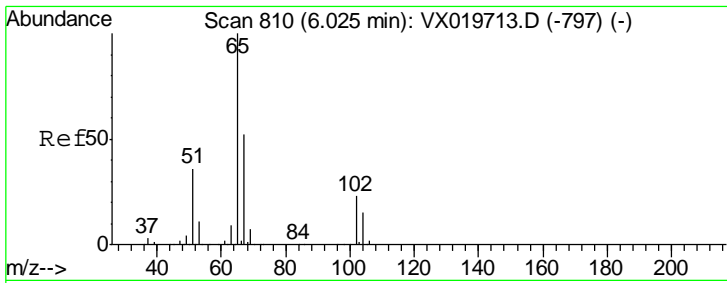
Tgt Ion	Resp	Lower	Upper
42	1905		
72	44.1	41.7	62.5
71	34.6	38.4	57.6#



#31
 Cyclohexane
 Concen: 1.162 ug/l
 RT: 5.62 min Scan# 743
 Delta R.T. 0.07 min
 Lab File: VX019992.D
 Acq: 14 Dec 2020 17:25

Tgt Ion	Resp	Lower	Upper
56	6298		
69	180.1	25.3	37.9#
84	144.3	71.4	107.0#

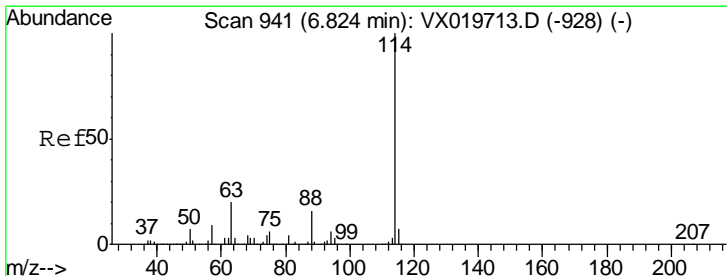
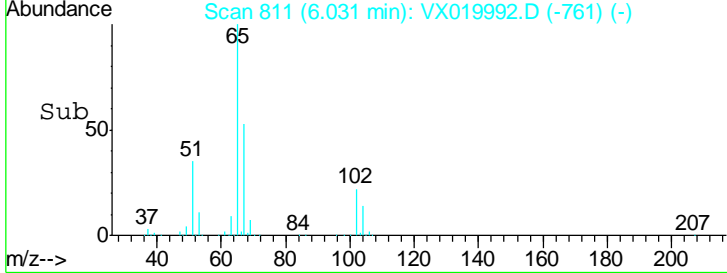
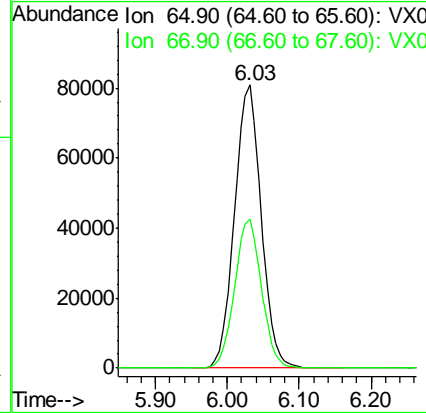
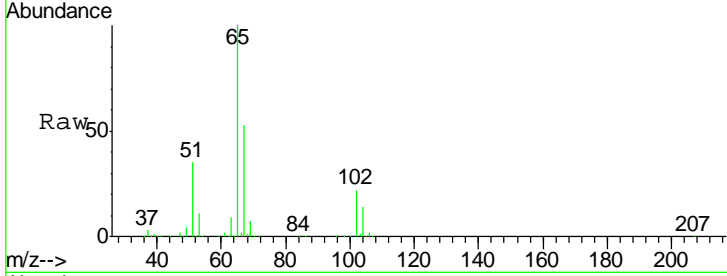




#33
 1,2-Dichloroethane-d4
 Concen: 47.820 ug/l
 RT: 6.03 min Scan# 811
 Delta R.T. 0.01 min
 Lab File: VX019992.D
 Acq: 14 Dec 2020 17:25

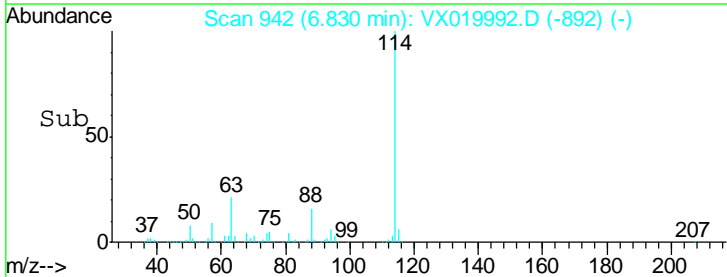
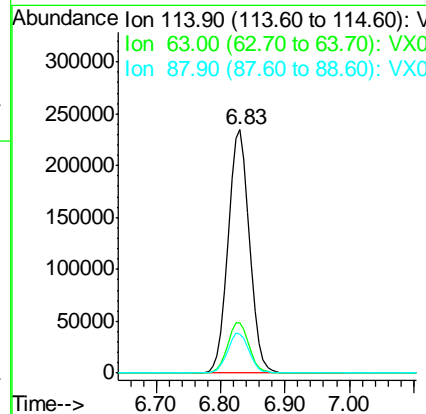
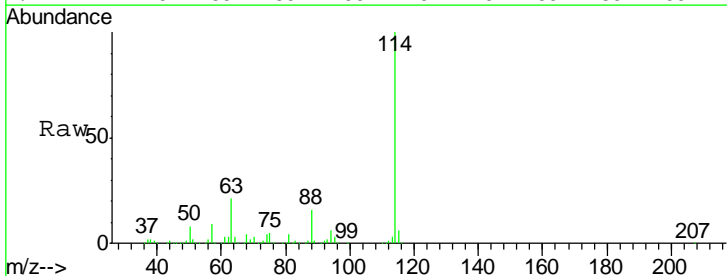
Instrument :
 MSVOA_X
ClientSampled :
 WCS-OH-E6

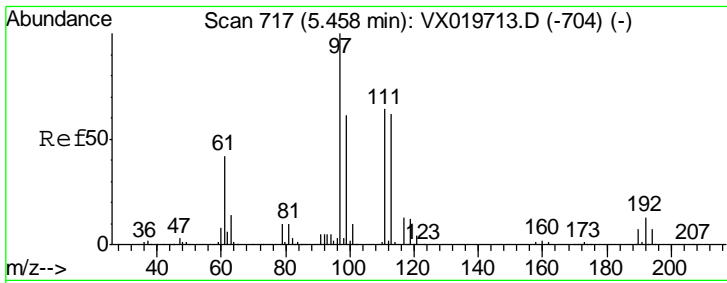
Tgt Ion: 65 Resp: 208363
 Ion Ratio Lower Upper
 65 100
 67 52.9 0.0 105.4



#34
 1,4-Difluorobenzene
 Concen: 50.000 ug/l
 RT: 6.83 min Scan# 942
 Delta R.T. 0.01 min
 Lab File: VX019992.D
 Acq: 14 Dec 2020 17:25

Tgt Ion: 114 Resp: 551795
 Ion Ratio Lower Upper
 114 100
 63 20.9 0.0 40.8
 88 16.1 0.0 32.8

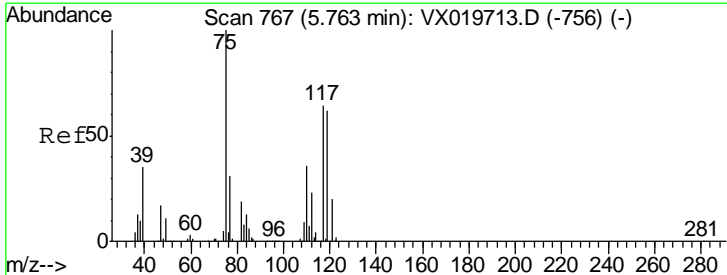
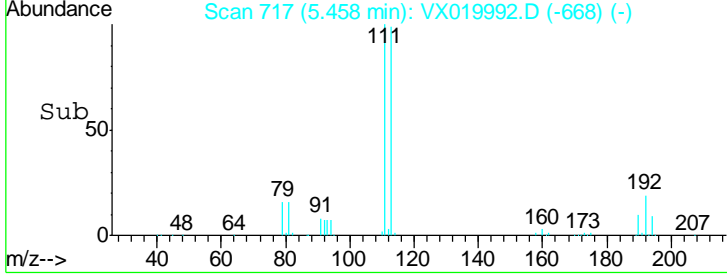
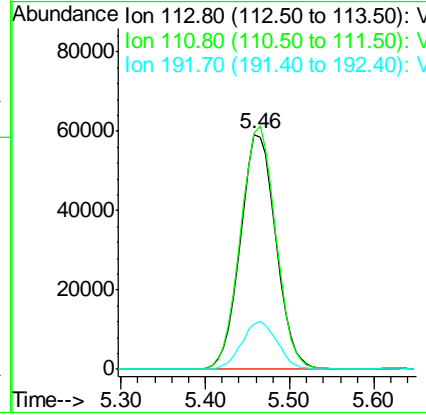
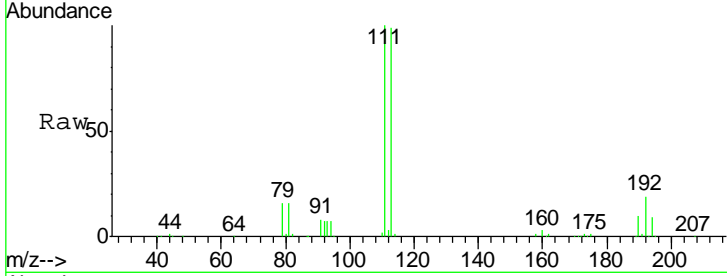




#35
 Dibromofluoromethane
 Concen: 47.455 ug/l
 RT: 5.46 min Scan# 717
 Delta R.T. -0.00 min
 Lab File: VX019992.D
 Acq: 14 Dec 2020 17:25

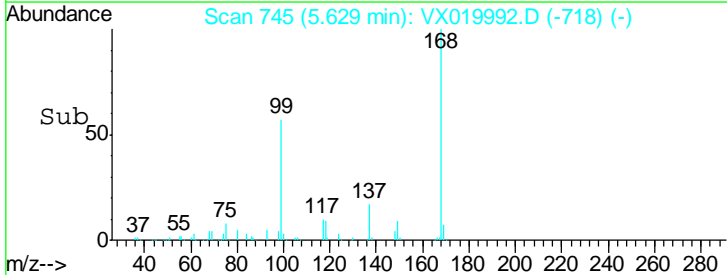
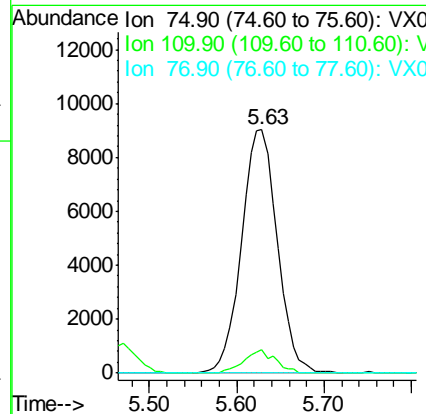
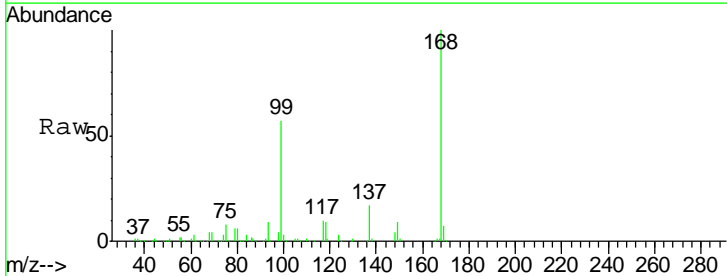
Instrument :
 MSVOA_X
 ClientSampled :
 WCS-OH-E6

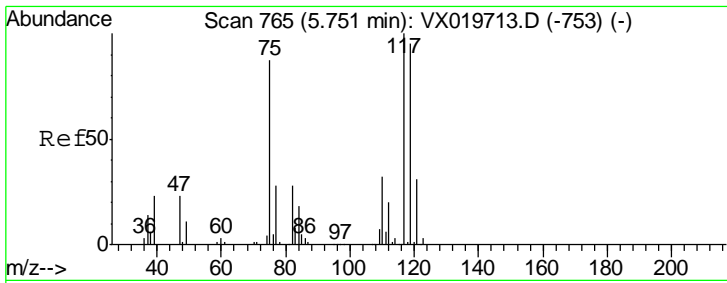
Tgt Ion	Resp	Lower	Upper
113	169232		
111	102.8	81.9	122.9
192	20.3	16.7	25.1



#36
 1,1-Dichloropropene
 Concen: 5.135 ug/l
 RT: 5.63 min Scan# 745
 Delta R.T. -0.13 min
 Lab File: VX019992.D
 Acq: 14 Dec 2020 17:25

Tgt Ion	Resp	Lower	Upper
75	25605		
110	8.5	18.1	54.4#
77	0.0	25.3	37.9#

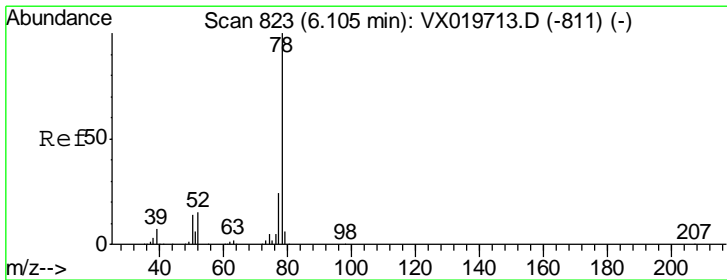
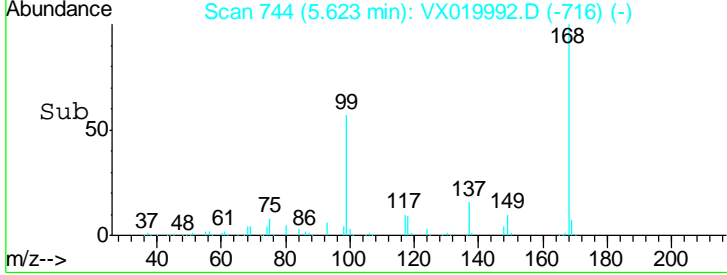
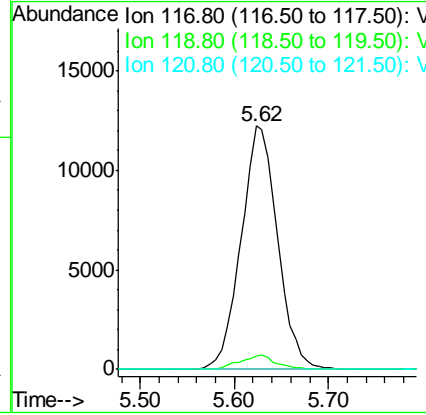
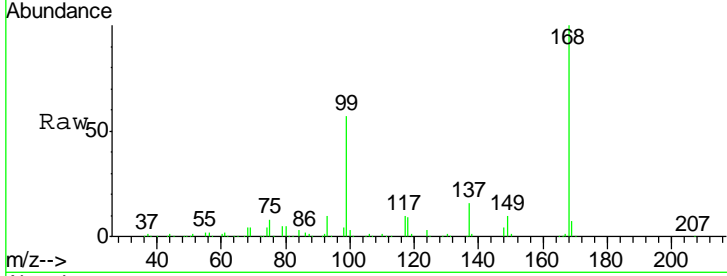




#38
 Carbon Tetrachloride
 Concen: 6.762 ug/l
 RT: 5.62 min Scan# 744
 Delta R.T. -0.13 min
 Lab File: VX019992.D
 Acq: 14 Dec 2020 17:25

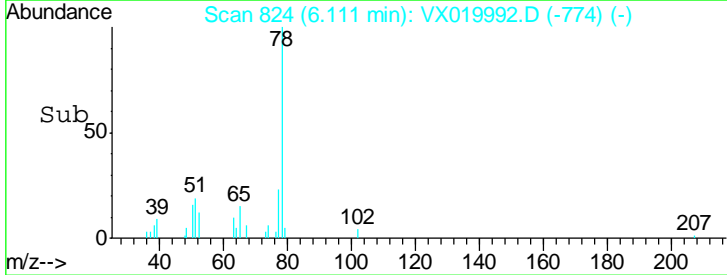
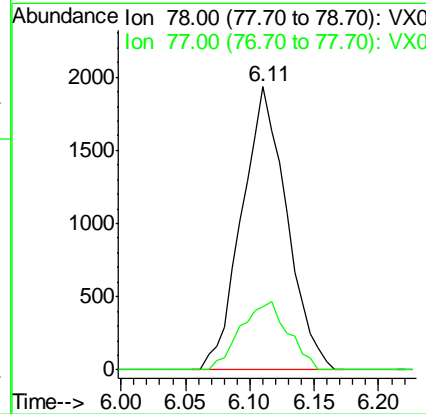
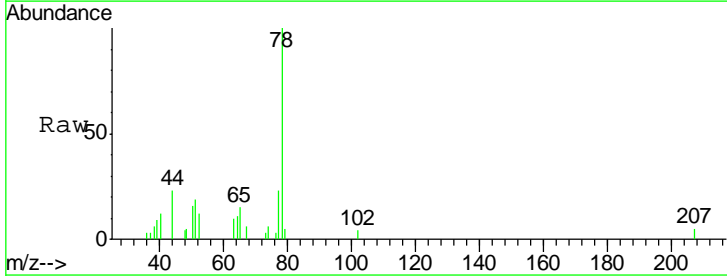
Instrument :
 MSVOA_X
ClientSampled :
 WCS-OH-E6

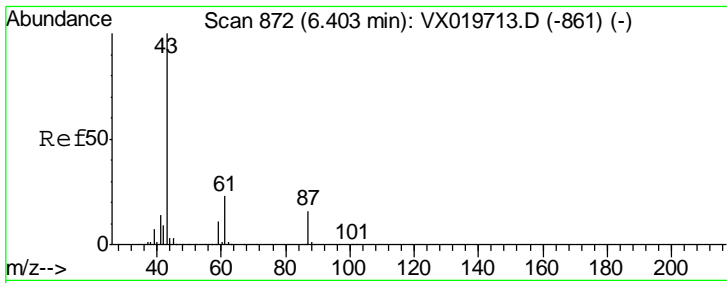
Tgt Ion	Resp	Lower	Upper
117	33017		
117	100		
119	5.7	76.2	114.2#
121	0.0	24.8	37.2#



#40
 Benzene
 Concen: 0.308 ug/l
 RT: 6.11 min Scan# 824
 Delta R.T. 0.01 min
 Lab File: VX019992.D
 Acq: 14 Dec 2020 17:25

Tgt Ion	Resp	Lower	Upper
78	4689		
78	100		
77	22.5	18.9	28.3

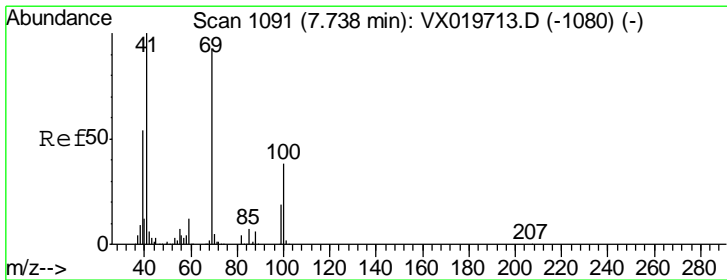
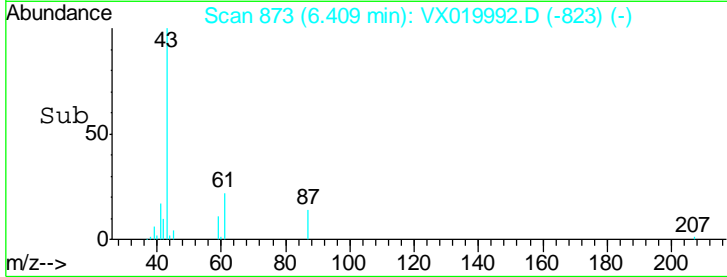
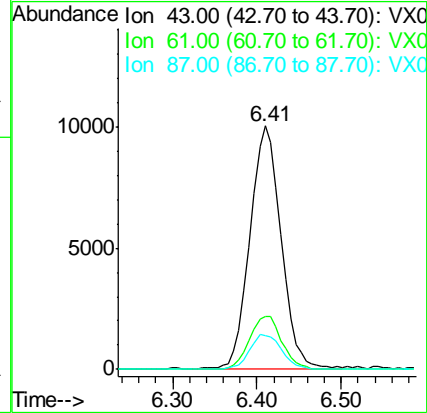
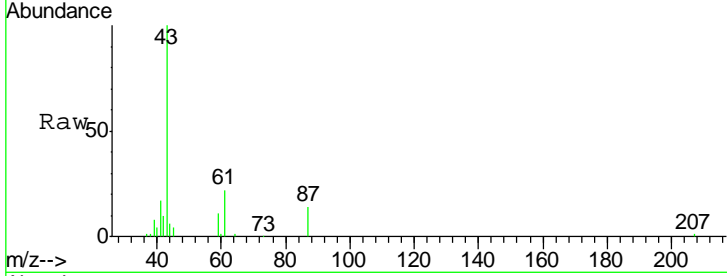




#43
 Isopropyl Acetate
 Concen: 3.083 ug/l
 RT: 6.41 min Scan# 873
 Delta R.T. 0.01 min
 Lab File: VX019992.D
 Acq: 14 Dec 2020 17:25

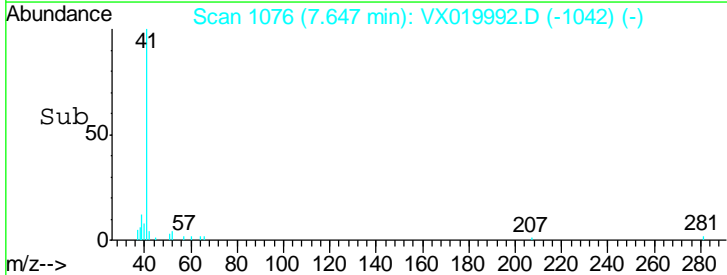
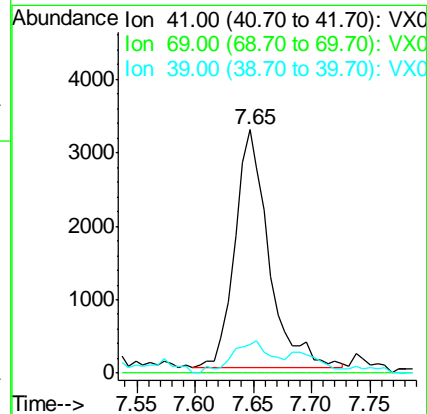
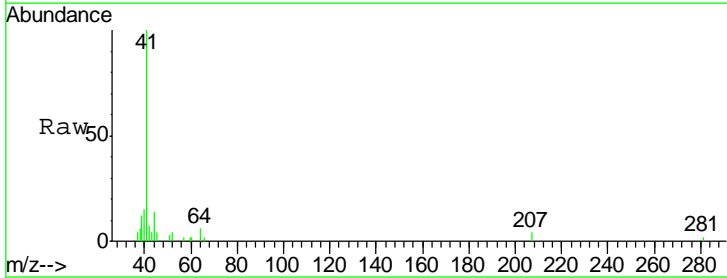
Instrument :
 MSVOA_X
 ClientSampled :
 WCS-OH-E6

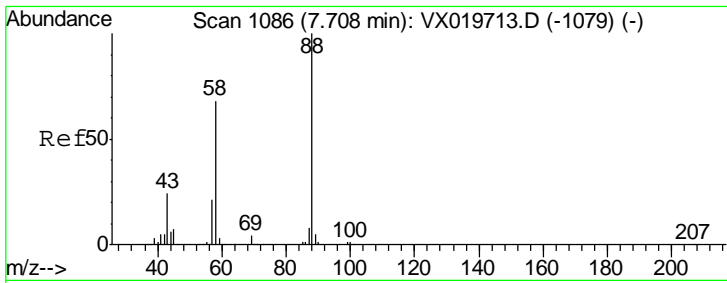
Tgt Ion	Resp	Lower	Upper
43	100		
61	22.6	18.2	27.4
87	14.5	12.5	18.7



#48
 Methyl methacrylate
 Concen: 1.632 ug/l
 RT: 7.65 min Scan# 1076
 Delta R.T. -0.09 min
 Lab File: VX019992.D
 Acq: 14 Dec 2020 17:25

Tgt Ion	Resp	Lower	Upper
41	100		
69	0.0	76.0	114.0#
39	0.0	44.6	67.0#

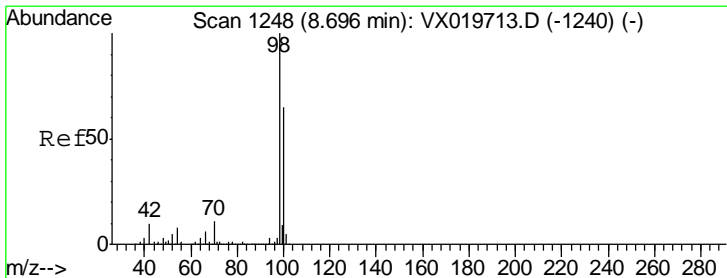
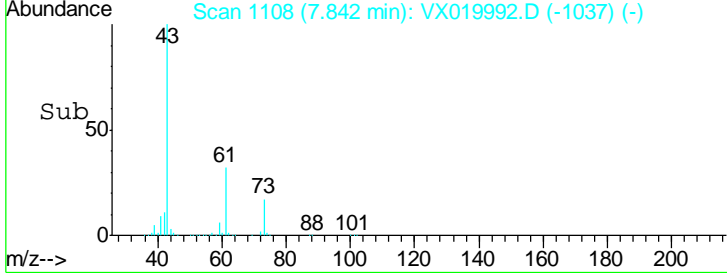
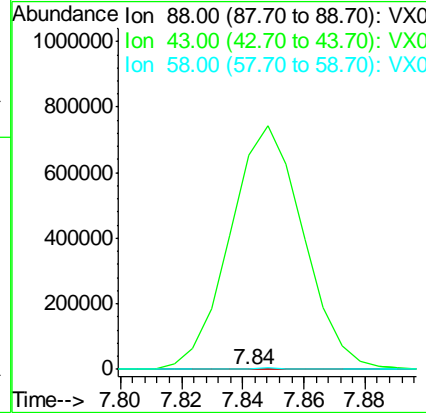
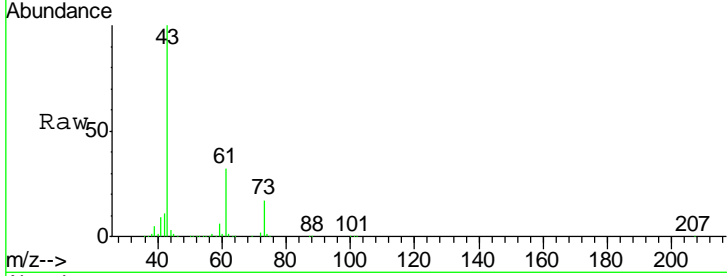




#49
 1,4-Dioxane
 Concen: 2.594 ug/l
 RT: 7.84 min Scan# 1108
 Delta R.T. 0.13 min
 Lab File: VX019992.D
 Acq: 14 Dec 2020 17:25

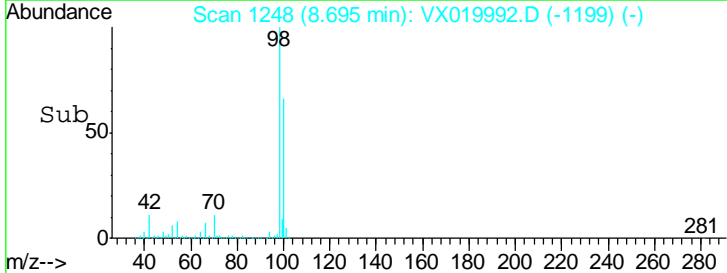
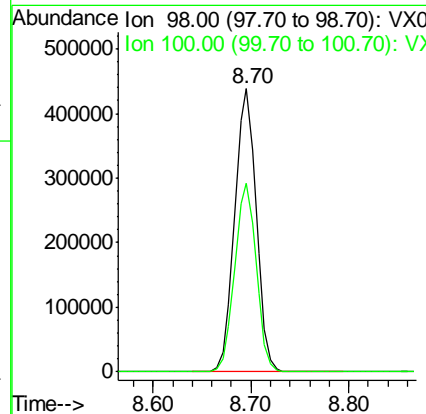
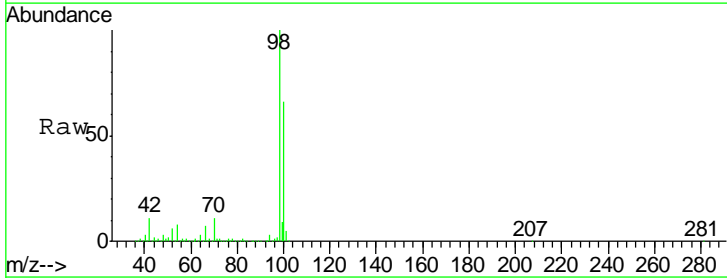
Instrument :
 MSVOA_X
ClientSampled :
 WCS-OH-E6

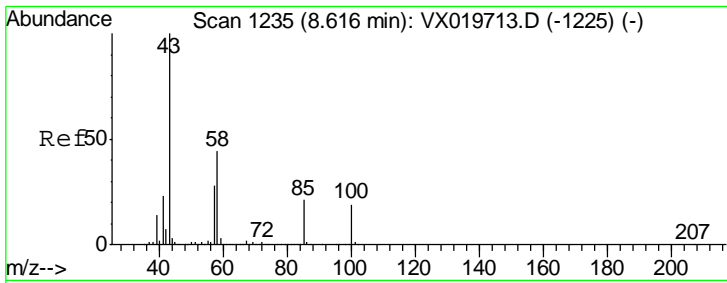
Tgt Ion	Resp	Lower	Upper
88	100		
43	492571.1	23.2	34.8#
58	2410.7	55.0	82.4#



#50
 Toluene-d8
 Concen: 49.472 ug/l
 RT: 8.70 min Scan# 1248
 Delta R.T. -0.00 min
 Lab File: VX019992.D
 Acq: 14 Dec 2020 17:25

Tgt Ion	Resp	Lower	Upper
98	100		
100	66.3	51.9	77.9

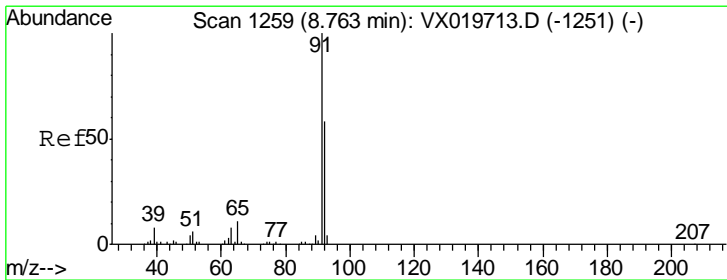
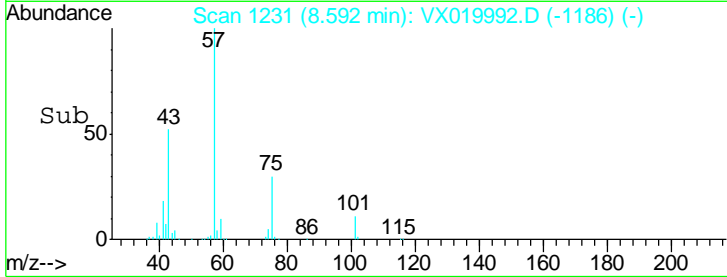
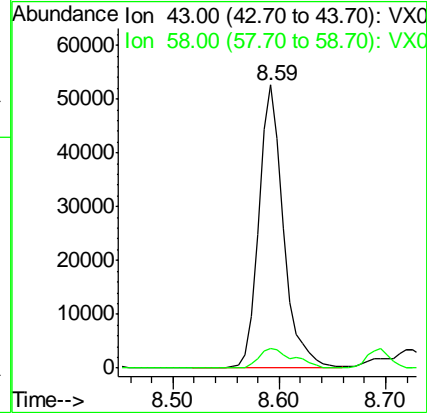
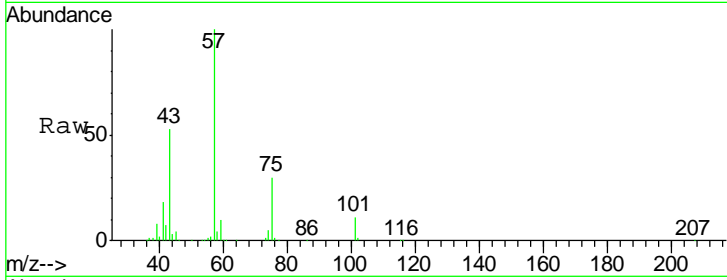




#51
 4-Methyl-2-Pentanone
 Concen: 16.928 ug/l
 RT: 8.59 min Scan# 1231
 Delta R.T. -0.02 min
 Lab File: VX019992.D
 Acq: 14 Dec 2020 17:25

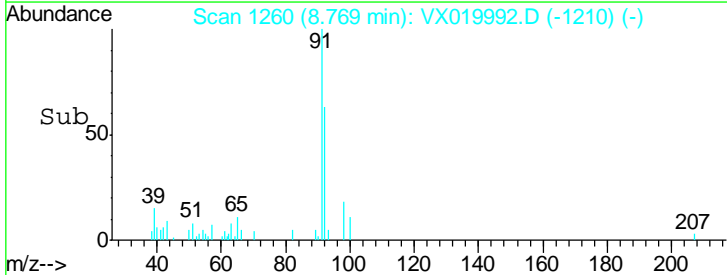
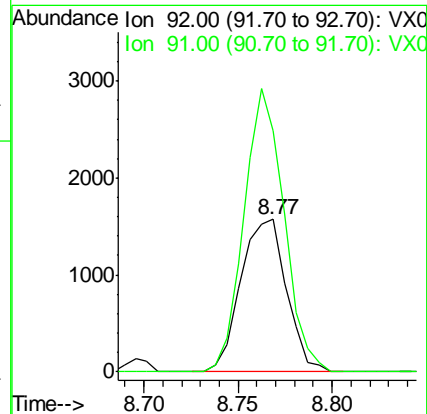
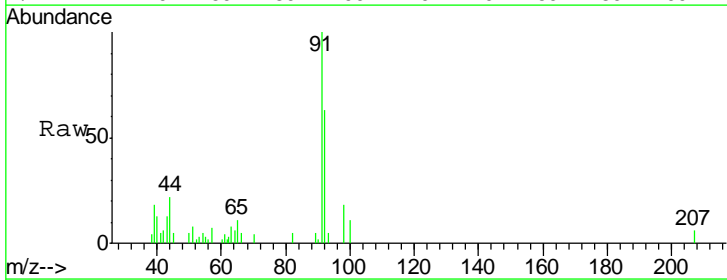
Instrument :
 MSVOA_X
 ClientSampleId :
 WCS-OH-E6

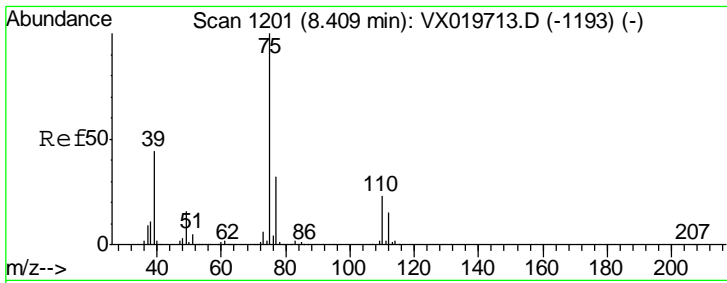
Tgt Ion: 43 Resp: 84592
 Ion Ratio Lower Upper
 43 100
 58 10.0 35.4 53.0#



#52
 Toluene
 Concen: 0.278 ug/l
 RT: 8.77 min Scan# 1260
 Delta R.T. 0.01 min
 Lab File: VX019992.D
 Acq: 14 Dec 2020 17:25

Tgt Ion: 92 Resp: 2647
 Ion Ratio Lower Upper
 92 100
 91 162.1 137.1 205.7

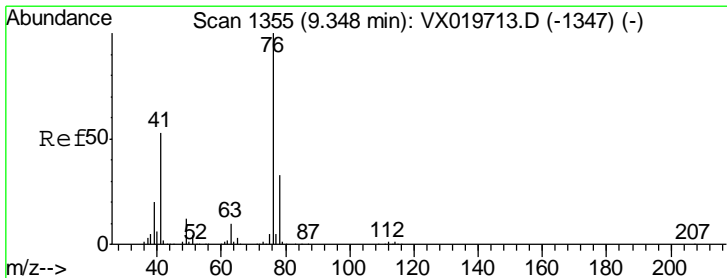
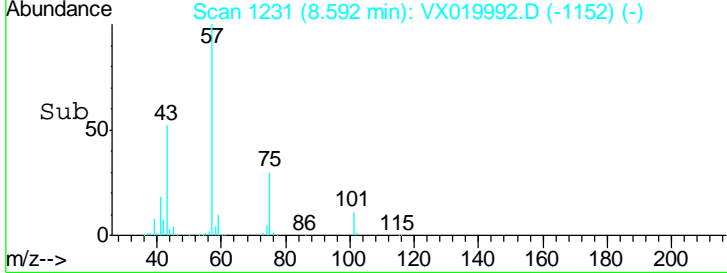
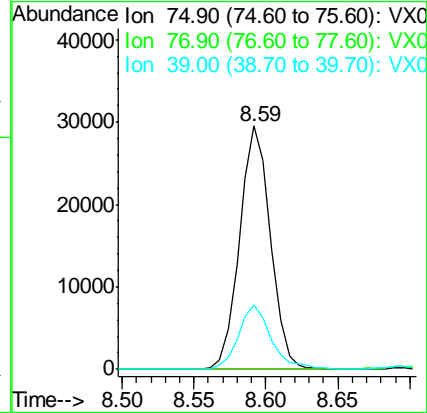
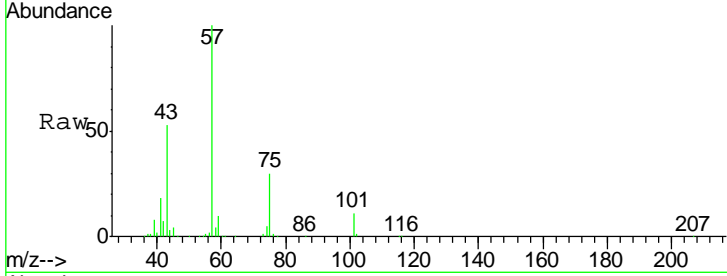




#54
 cis-1,3-Dichloropropene
 Concen: 7.133 ug/l
 RT: 8.59 min Scan# 1231
 Delta R.T. 0.18 min
 Lab File: VX019992.D
 Acq: 14 Dec 2020 17:25

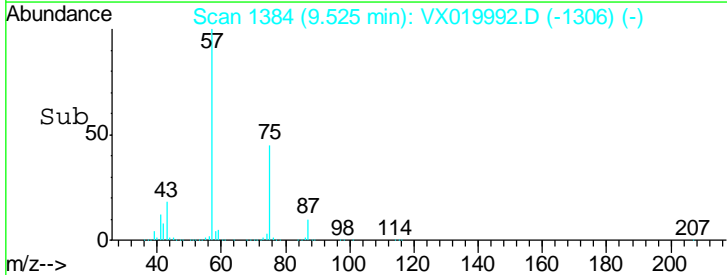
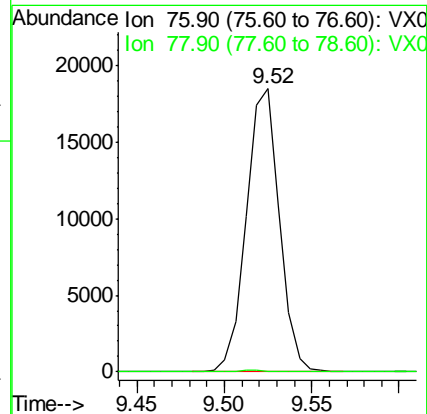
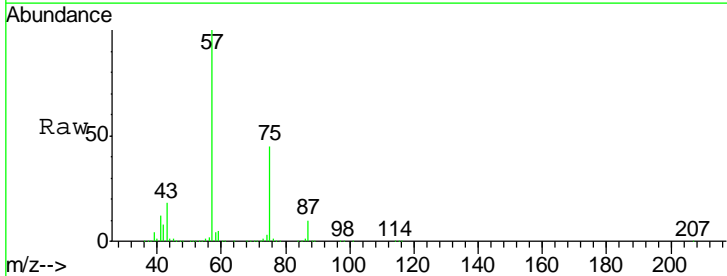
Instrument :
 MSVOA_X
 ClientSampled :
 WCS-OH-E6

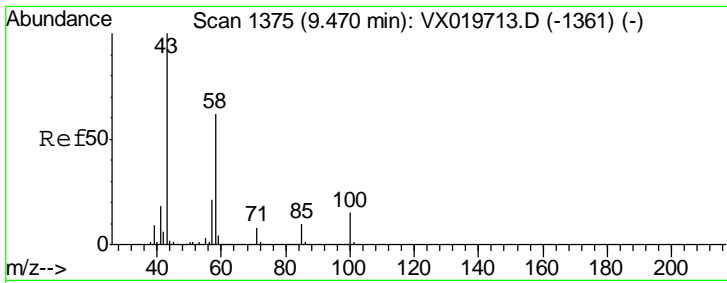
Tgt Ion	Resp	Lower	Upper
75	43865		
77	0.4	25.7	38.5#
39	26.2	35.1	52.7#



#57
 1,3-Dichloropropane
 Concen: 3.692 ug/l
 RT: 9.52 min Scan# 1384
 Delta R.T. 0.18 min
 Lab File: VX019992.D
 Acq: 14 Dec 2020 17:25

Tgt Ion	Resp	Lower	Upper
76	24201		
78	0.5	26.2	39.2#

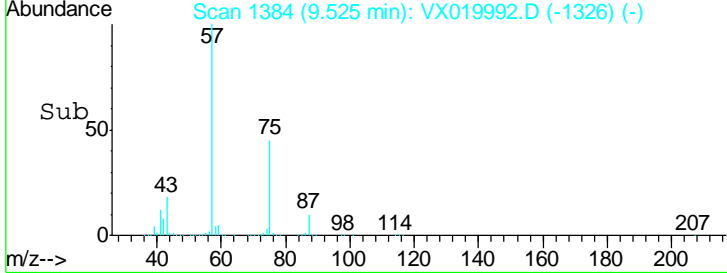
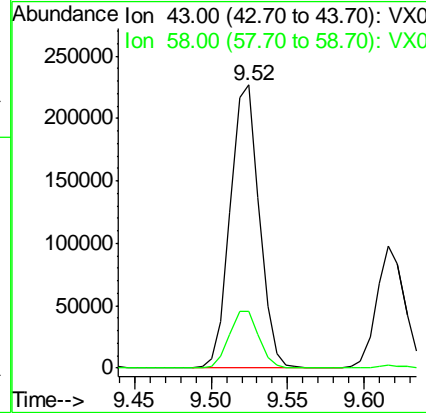
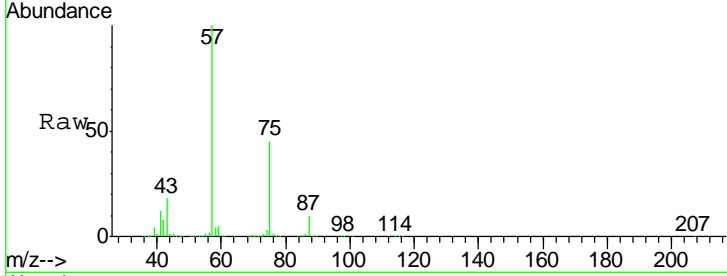




#59
 2-Hexanone
 Concen: 76.902 ug/l
 RT: 9.52 min Scan# 1384
 Delta R.T. 0.05 min
 Lab File: VX019992.D
 Acq: 14 Dec 2020 17:25

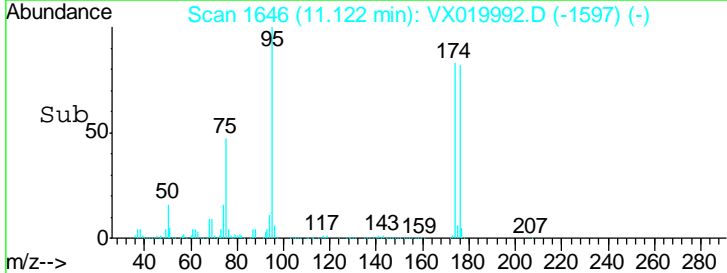
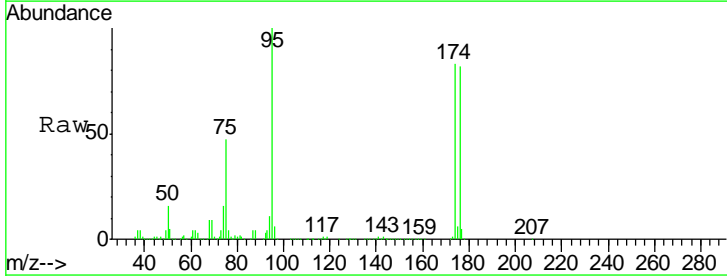
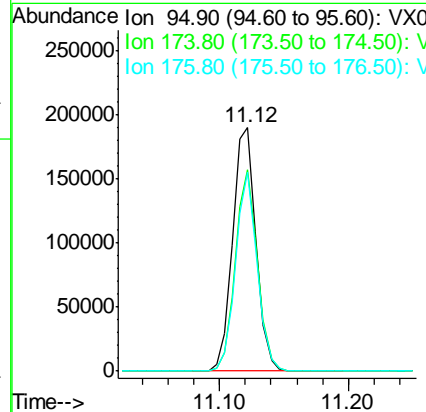
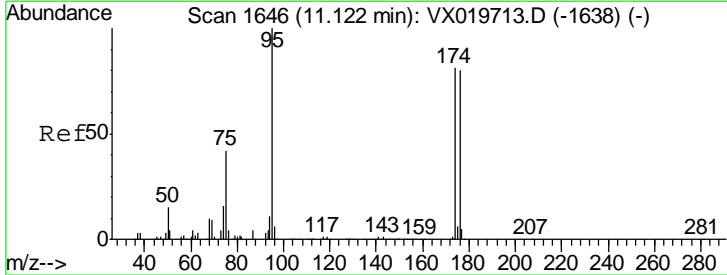
Instrument :
 MSVOA_X
ClientSampled :
 WCS-OH-E6

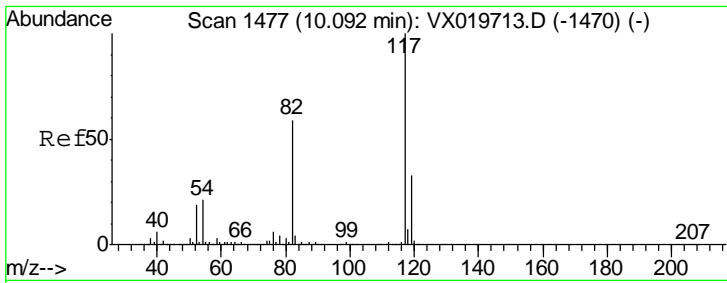
Tgt Ion: 43 Resp: 297876
 Ion Ratio Lower Upper
 43 100
 58 20.7 30.9 92.8#



#62
 4-Bromofluorobenzene
 Concen: 46.671 ug/l
 RT: 11.12 min Scan# 1646
 Delta R.T. -0.00 min
 Lab File: VX019992.D
 Acq: 14 Dec 2020 17:25

Tgt Ion: 95 Resp: 241844
 Ion Ratio Lower Upper
 95 100
 174 78.7 0.0 154.6
 176 75.4 0.0 155.8

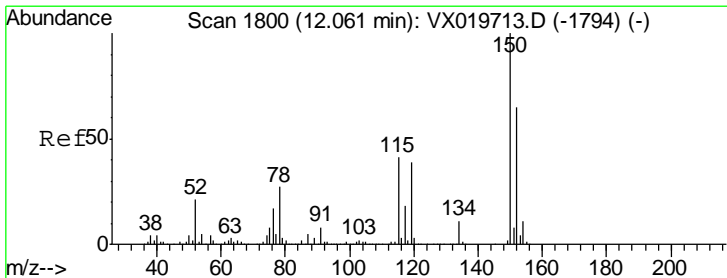
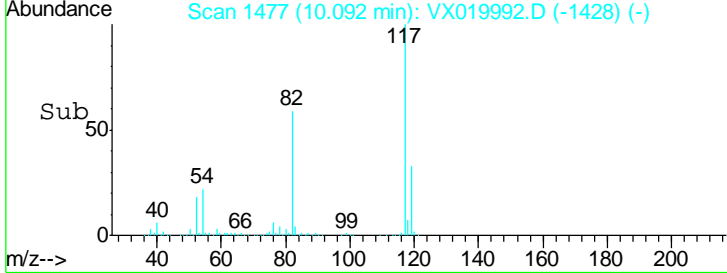
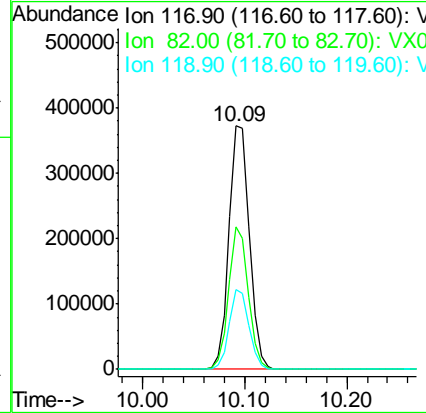
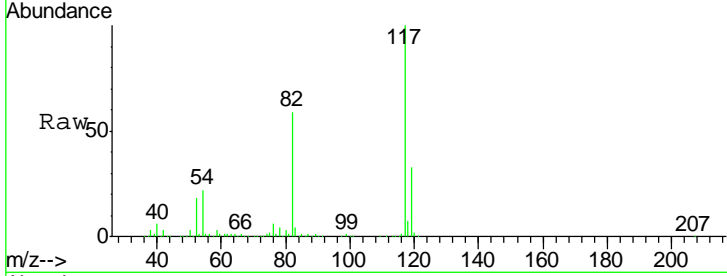




#63
 Chlorobenzene-d5
 Concen: 50.000 ug/l
 RT: 10.09 min Scan# 1477
 Delta R.T. -0.00 min
 Lab File: VX019992.D
 Acq: 14 Dec 2020 17:25

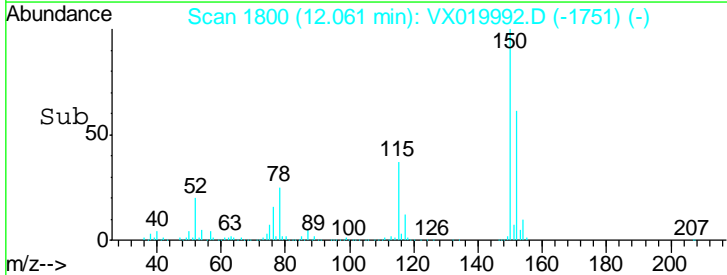
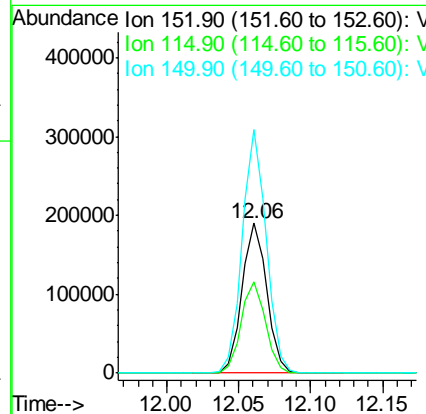
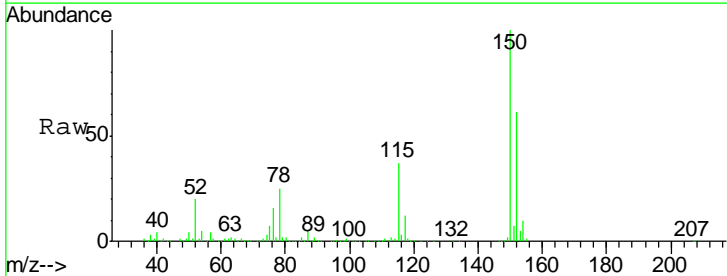
Instrument :
 MSVOA_X
 ClientSampled :
 WCS-OH-E6

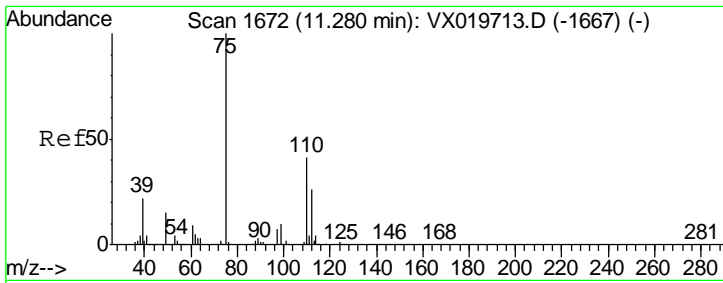
Tgt Ion	Resp	Lower	Upper
117	100		
82	58.6	47.4	71.2
119	32.6	26.6	39.8



#72
 1,4-Dichlorobenzene-d4
 Concen: 50.000 ug/l
 RT: 12.06 min Scan# 1800
 Delta R.T. -0.00 min
 Lab File: VX019992.D
 Acq: 14 Dec 2020 17:25

Tgt Ion	Resp	Lower	Upper
152	100		
115	60.2	41.1	123.3
150	158.2	0.0	349.0

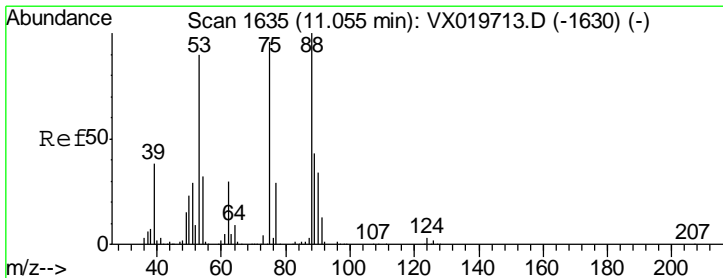
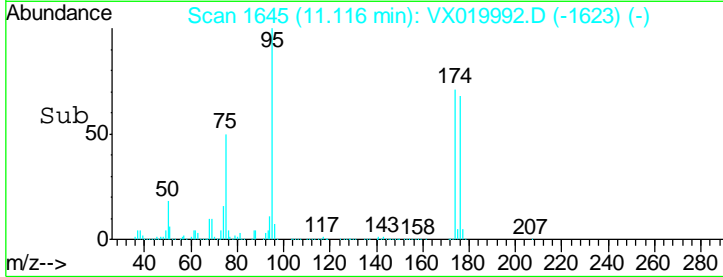
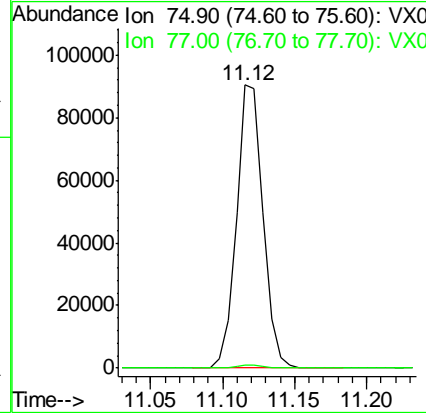
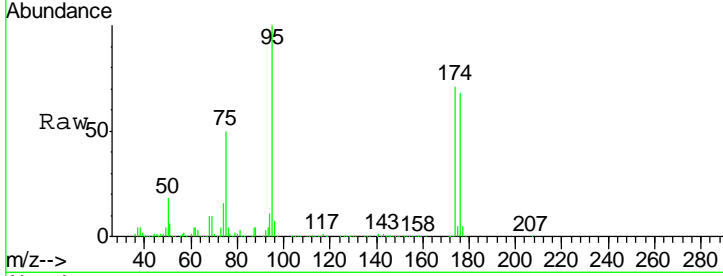




#76
 1,2,3-Trichloropropane
 Concen: 22.902 ug/l
 RT: 11.12 min Scan# 1645
 Delta R.T. -0.16 min
 Lab File: VX019992.D
 Acq: 14 Dec 2020 17:25

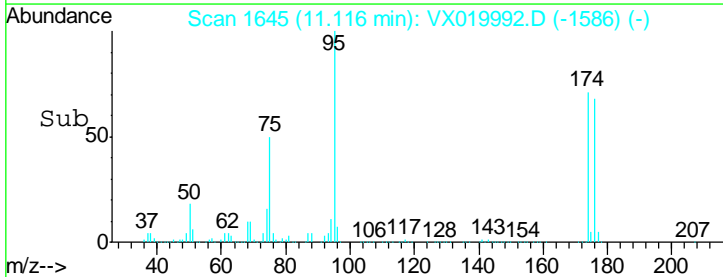
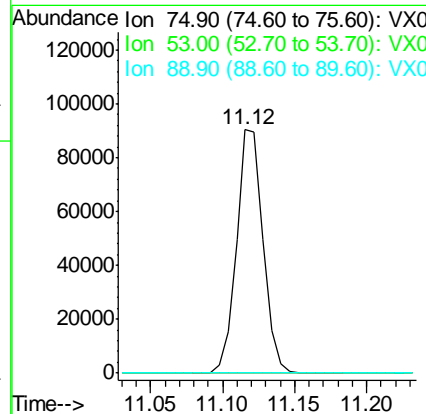
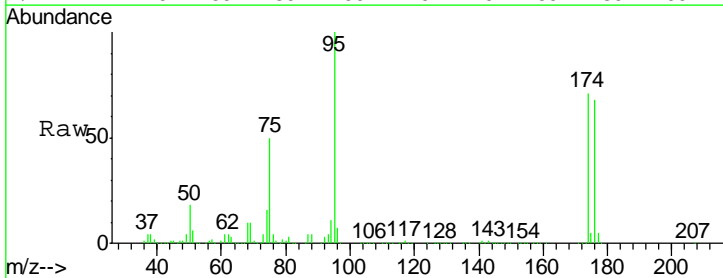
Instrument :
 MSVOA_X
 ClientSampled :
 WCS-OH-E6

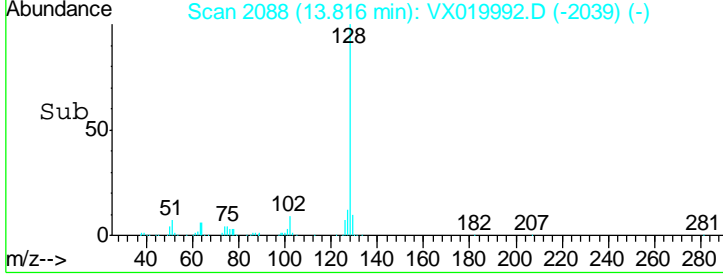
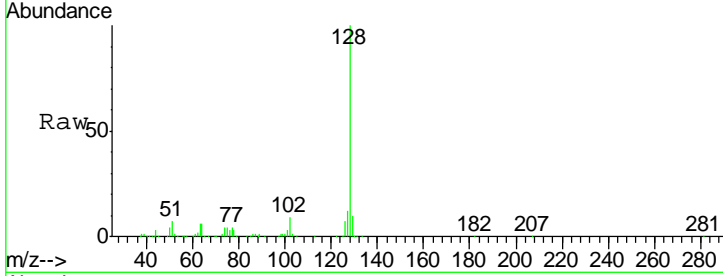
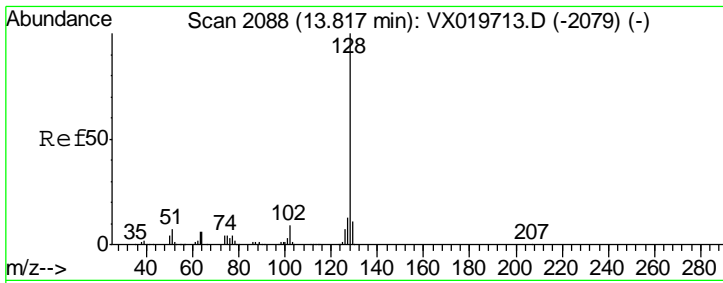
Tgt Ion: 75 Resp: 116560
 Ion Ratio Lower Upper
 75 100
 77 1.3 19.1 57.5#



#81
 trans-1,4-Dichloro-2-butene
 Concen: 66.205 ug/l
 RT: 11.12 min Scan# 1645
 Delta R.T. 0.06 min
 Lab File: VX019992.D
 Acq: 14 Dec 2020 17:25

Tgt Ion: 75 Resp: 116560
 Ion Ratio Lower Upper
 75 100
 53 0.1 74.5 111.7#
 89 0.0 37.9 56.9#





#95
 Naphthalene
 Concen: 4.261 ug/l
 RT: 13.82 min Scan# 2088
 Delta R.T. -0.00 min
 Lab File: VX019992.D
 Acq: 14 Dec 2020 17:25

Instrument : MSVOA_X
 ClientSampleId : WCS-OH-E6

Tgt Ion: 128 Resp: 63834

Ion	Ratio	Lower	Upper
128	100		
127	13.3	10.3	15.5
129	11.2	8.8	13.2

