

Data Path : Z:\voasrv\HPCHEM1\MSVOA_X\Data\VX121421\
 Data File : VX025771.D
 Acq On : 14 Dec 2021 12:14
 Operator : JC/MD
 Sample : VX1214WBL01
 Misc : 5.0mL/MSVOA_X/WATER
 ALS Vial : 4 Sample Multiplier: 1

Instrument :
 MSVOA_X
 ClientSampleId :

Quant Time: Dec 15 07:01:33 2021
 Quant Method : Z:\voasrv\HPCHEM1\MSVOA_X\Method\82X121321W.M
 Quant Title : SW846 8260
 QLast Update : Tue Dec 14 07:02:11 2021
 Response via : Initial Calibration

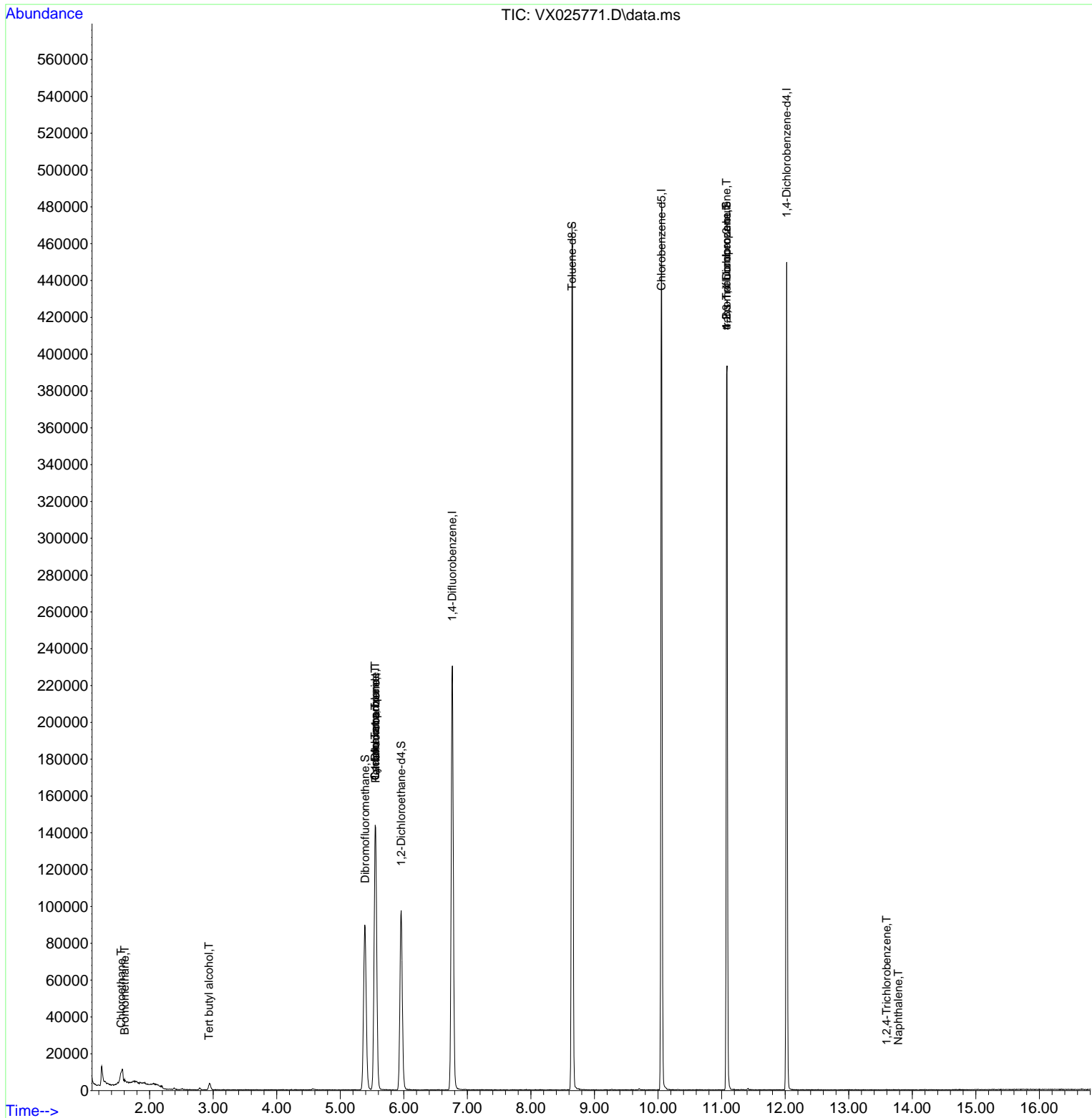
| Compound | R.T. | QIon | Response | Conc | Units | Dev(Min) |
|-------------------------------|--------|----------------|----------|-----------|---------|----------|
| ----- | | | | | | |
| Internal Standards | | | | | | |
| 1) Pentafluorobenzene | 5.556 | 168 | 135880 | 50.000 | ug/l | 0.00 |
| 34) 1,4-Difluorobenzene | 6.763 | 114 | 236891 | 50.000 | ug/l | 0.00 |
| 63) Chlorobenzene-d5 | 10.055 | 117 | 215953 | 50.000 | ug/l | 0.00 |
| 72) 1,4-Dichlorobenzene-d4 | 12.024 | 152 | 89591 | 50.000 | ug/l | 0.00 |
| System Monitoring Compounds | | | | | | |
| 33) 1,2-Dichloroethane-d4 | 5.958 | 65 | 91839 | 46.975 | ug/l | 0.00 |
| Spiked Amount | 50.000 | Range 78 - 117 | Recovery | = | 93.940% | |
| 35) Dibromofluoromethane | 5.391 | 113 | 77755 | 47.064 | ug/l | 0.00 |
| Spiked Amount | 50.000 | Range 75 - 124 | Recovery | = | 94.120% | |
| 50) Toluene-d8 | 8.647 | 98 | 281837 | 46.821 | ug/l | 0.00 |
| Spiked Amount | 50.000 | Range 92 - 112 | Recovery | = | 93.640% | |
| 62) 4-Bromofluorobenzene | 11.079 | 95 | 109080 | 47.704 | ug/l | 0.00 |
| Spiked Amount | 50.000 | Range 83 - 123 | Recovery | = | 95.400% | |
| Target Compounds | | | | | | |
| | | | | | | Qvalue |
| 5) Bromomethane | 1.605 | 94 | 267 | 0.222 | ug/l # | 17 |
| 6) Chloroethane | 1.551 | 64 | 4401 | 3.610 | ug/l # | 57 |
| 11) Tert butyl alcohol | 2.934 | 59 | 2134 | 5.441 | ug/l # | 73 |
| 16) Acetone | 2.374 | 43 | 840 | Below Cal | # | 76 |
| 20) Methylene Chloride | 2.788 | 84 | 431 | Below Cal | # | 93 |
| 31) Cyclohexane | 5.550 | 56 | 2858 | 1.202 | ug/l # | 1 |
| 36) 1,1-Dichloropropene | 5.550 | 75 | 11016 | 4.917 | ug/l # | 50 |
| 38) Carbon Tetrachloride | 5.550 | 117 | 14046 | 5.388 | ug/l # | 15 |
| 76) 1,2,3-Trichloropropane | 11.079 | 75 | 55720 | 27.145 | ug/l # | 39 |
| 81) trans-1,4-Dichloro-2-b... | 11.079 | 75 | 55720 | 84.157 | ug/l # | 10 |
| 93) 1,2,4-Trichlorobenzene | 13.597 | 180 | 80 | 3.412 | ug/l # | 56 |
| 95) Naphthalene | 13.780 | 128 | 184 | 2.440 | ug/l # | 69 |
| ----- | | | | | | |

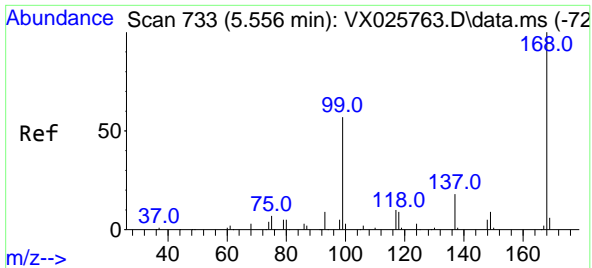
(#) = qualifier out of range (m) = manual integration (+) = signals summed

Data Path : Z:\voasrv\HPCHEM1\MSVOA_X\Data\VX121421\
 Data File : VX025771.D
 Acq On : 14 Dec 2021 12:14
 Operator : JC/MD
 Sample : VX1214WBL01
 Misc : 5.0mL/MSVOA_X/WATER
 ALS Vial : 4 Sample Multiplier: 1

Instrument :
 MSVOA_X
 ClientSampleId :

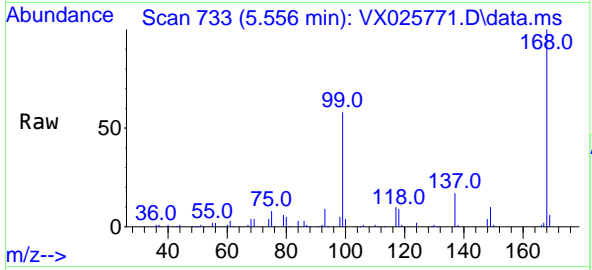
Quant Time: Dec 15 07:01:33 2021
 Quant Method : Z:\voasrv\HPCHEM1\MSVOA_X\Method\82X121321W.M
 Quant Title : SW846 8260
 QLast Update : Tue Dec 14 07:02:11 2021
 Response via : Initial Calibration



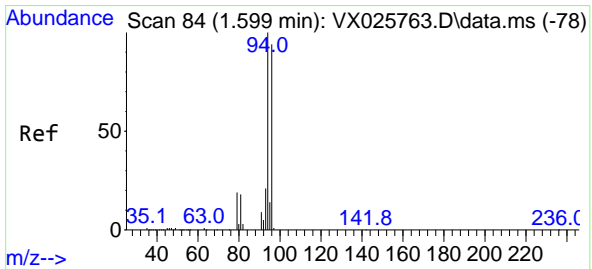
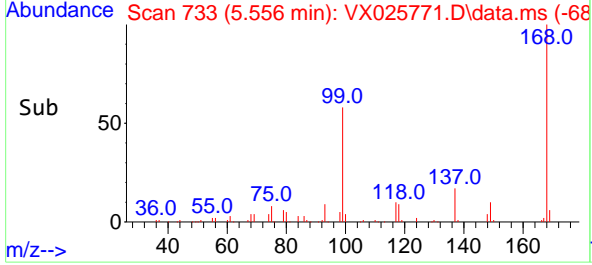
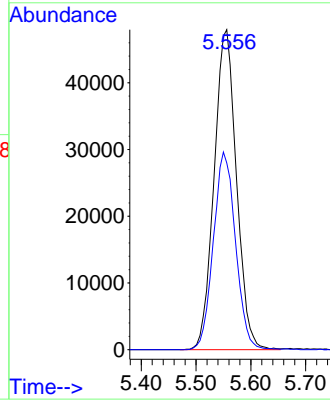


#1
 Pentafluorobenzene
 Concen: 50.000 ug/l
 RT: 5.556 min Scan# 71
 Delta R.T. -0.000 min
 Lab File: VX025771.D
 Acq: 14 Dec 2021 12:14

Instrument :
 MSVOA_X
 ClientSampleId :

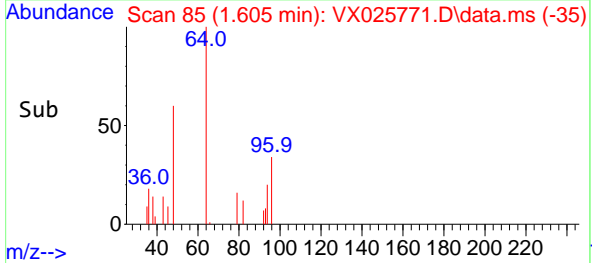
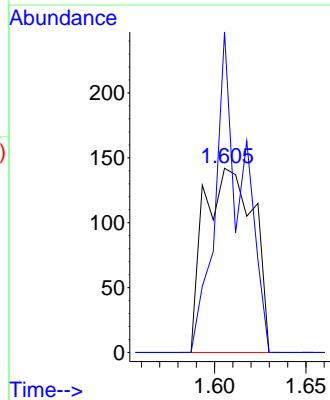
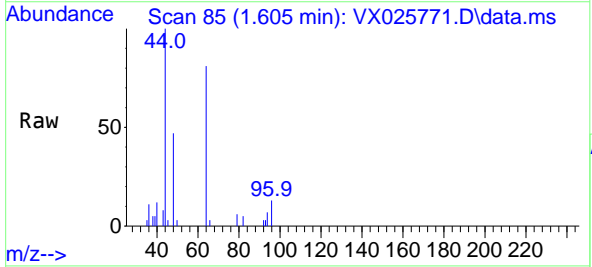


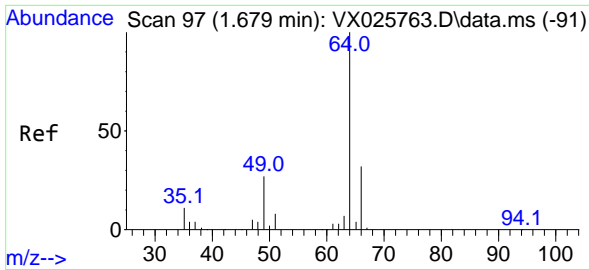
Tgt Ion:168 Resp: 135880
 Ion Ratio Lower Upper
 168 100
 99 58.4 45.8 68.8



#5
 Bromomethane
 Concen: 0.222 ug/l
 RT: 1.605 min Scan# 85
 Delta R.T. 0.006 min
 Lab File: VX025771.D
 Acq: 14 Dec 2021 12:14

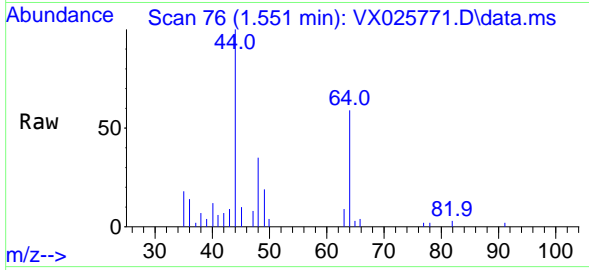
Tgt Ion: 94 Resp: 267
 Ion Ratio Lower Upper
 94 100
 96 173.9 75.0 112.4#



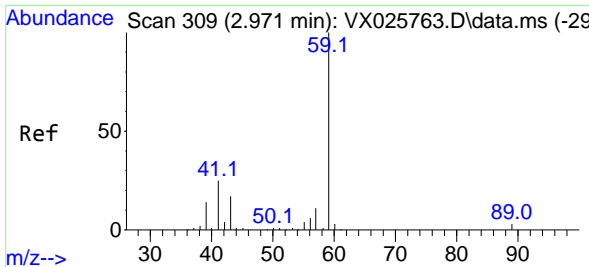
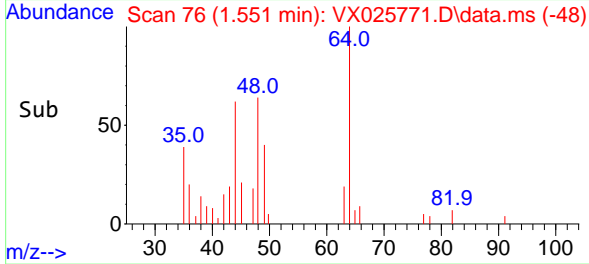
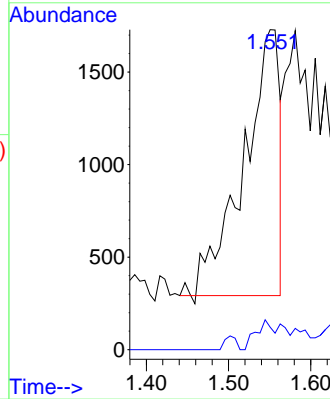


#6
 Chloroethane
 Concen: 3.610 ug/l
 RT: 1.551 min Scan# 70
 Delta R.T. -0.128 min
 Lab File: VX025771.D
 Acq: 14 Dec 2021 12:14

Instrument : MSVOA_X
 ClientSampleId :

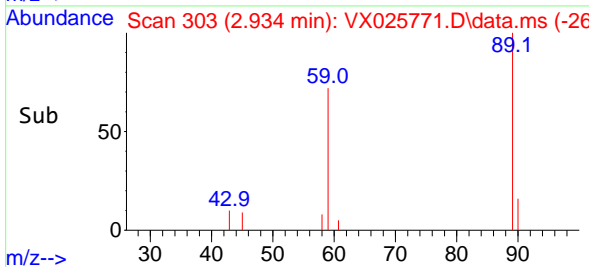
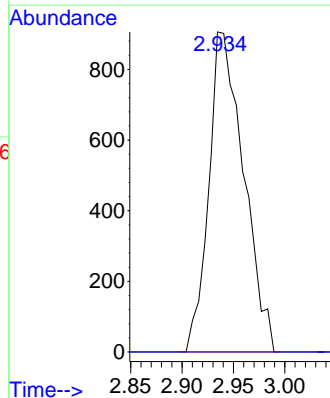
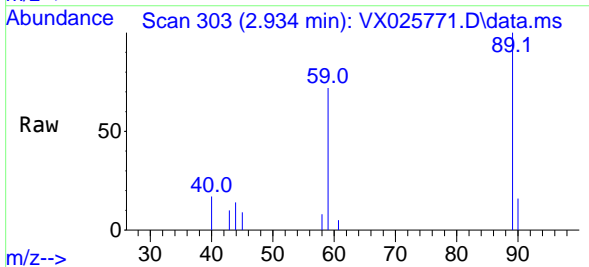


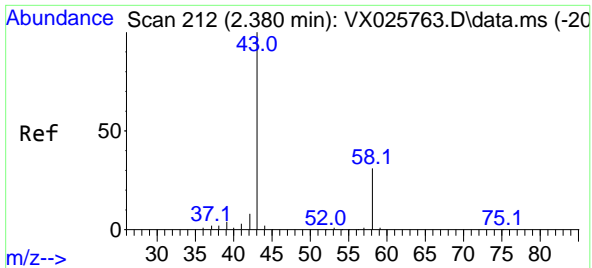
Tgt Ion: 64 Resp: 4401
 Ion Ratio Lower Upper
 64 100
 66 8.5 25.9 38.9#



#11
 Tert butyl alcohol
 Concen: 5.441 ug/l
 RT: 2.934 min Scan# 303
 Delta R.T. -0.037 min
 Lab File: VX025771.D
 Acq: 14 Dec 2021 12:14

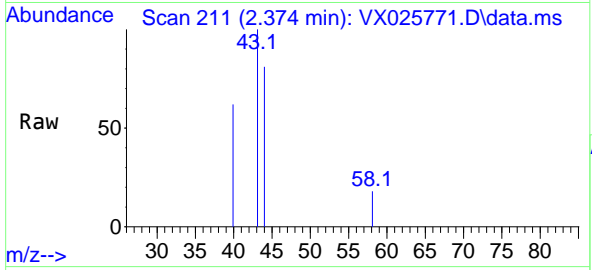
Tgt Ion: 59 Resp: 2134
 Ion Ratio Lower Upper
 59 100
 57 0.0 8.2 12.2#



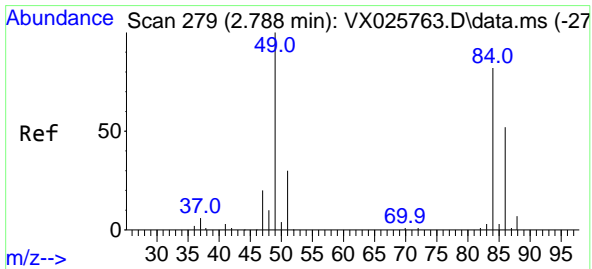
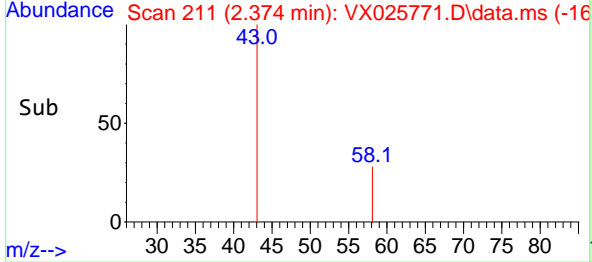
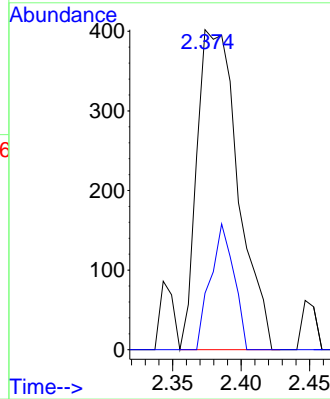


#16
 Acetone
 Concen: Below Cal
 RT: 2.374 min Scan# 211
 Delta R.T. -0.006 min
 Lab File: VX025771.D
 Acq: 14 Dec 2021 12:14

Instrument :
 MSVOA_X
 ClientSampleId :

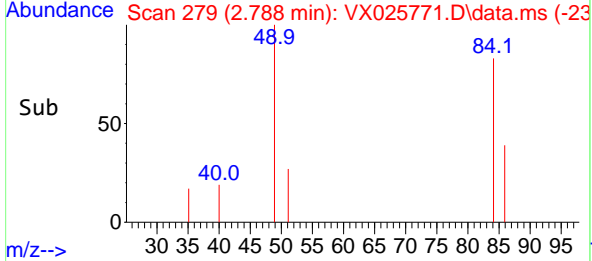
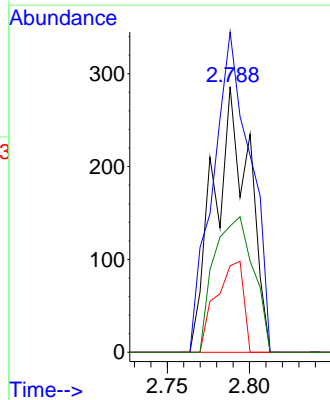
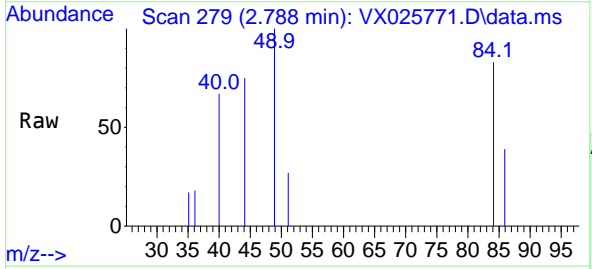


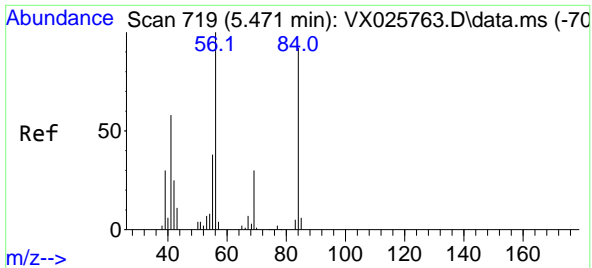
Tgt Ion: 43 Resp: 840
 Ion Ratio Lower Upper
 43 100
 58 17.7 24.8 37.2#



#20
 Methylene Chloride
 Concen: Below Cal
 RT: 2.788 min Scan# 279
 Delta R.T. 0.000 min
 Lab File: VX025771.D
 Acq: 14 Dec 2021 12:14

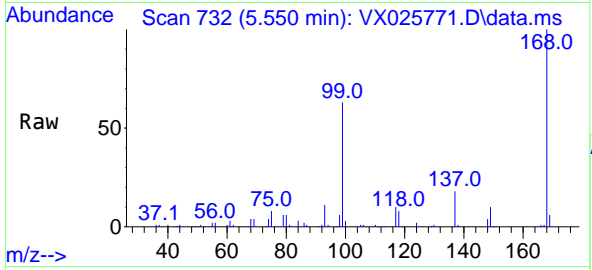
Tgt Ion: 84 Resp: 431
 Ion Ratio Lower Upper
 84 100
 49 120.6 97.1 145.7
 51 32.5 29.3 43.9
 86 47.6 50.8 76.2#



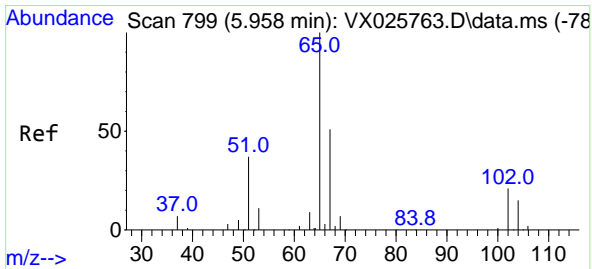
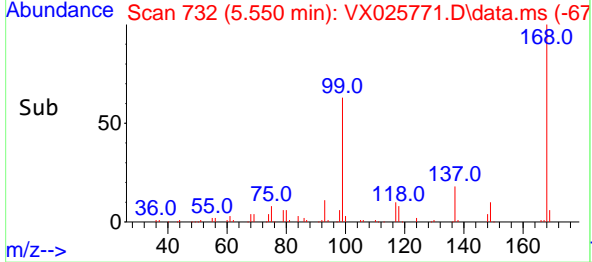
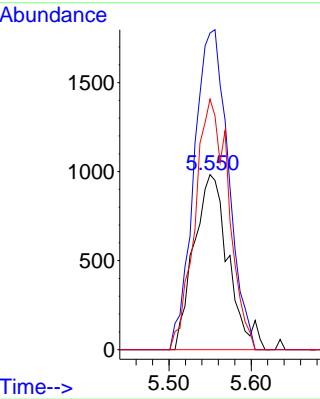


#31
 Cyclohexane
 Concen: 1.202 ug/l
 RT: 5.550 min Scan# 719
 Delta R.T. 0.079 min
 Lab File: VX025771.D
 Acq: 14 Dec 2021 12:14

Instrument : MSVOA_X
 ClientSampleId :

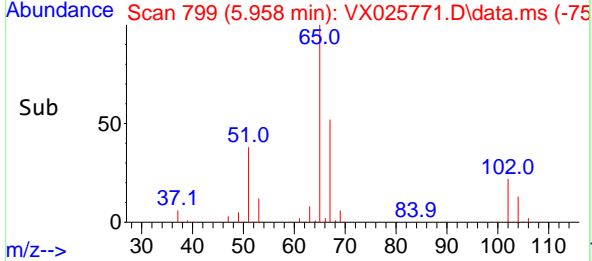
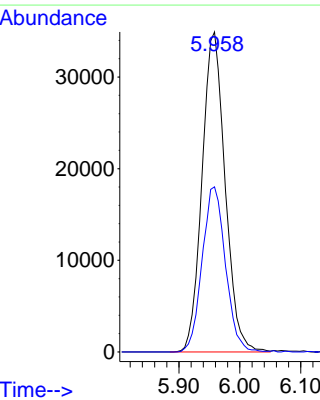
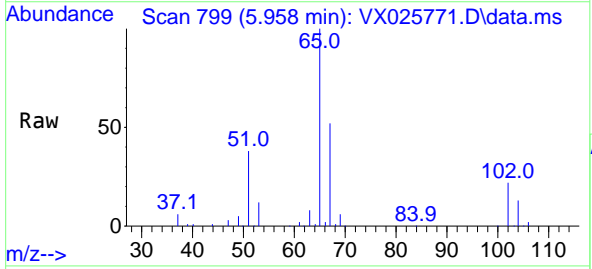


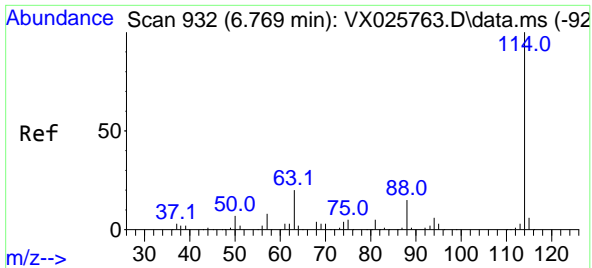
Tgt Ion: 56 Resp: 2858
 Ion Ratio Lower Upper
 56 100
 69 180.9 23.9 35.9#
 84 143.1 73.2 109.8#



#33
 1,2-Dichloroethane-d4
 Concen: 46.975 ug/l
 RT: 5.958 min Scan# 799
 Delta R.T. -0.000 min
 Lab File: VX025771.D
 Acq: 14 Dec 2021 12:14

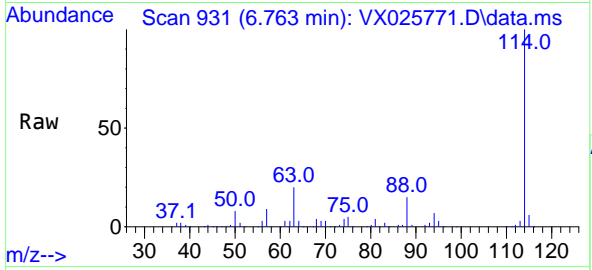
Tgt Ion: 65 Resp: 91839
 Ion Ratio Lower Upper
 65 100
 67 52.0 0.0 103.4



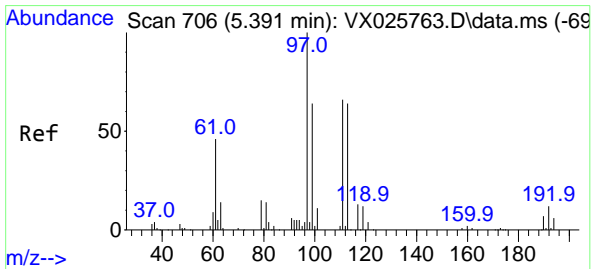
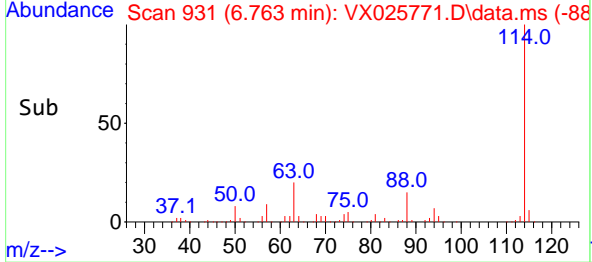
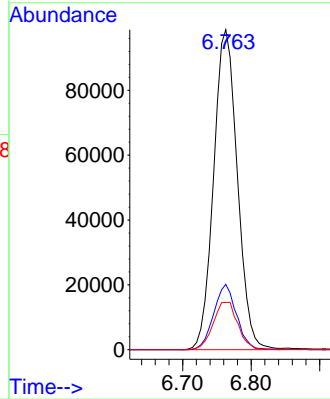


#34
 1,4-Difluorobenzene
 Concen: 50.000 ug/l
 RT: 6.763 min Scan# 911
 Delta R.T. -0.006 min
 Lab File: VX025771.D
 Acq: 14 Dec 2021 12:14

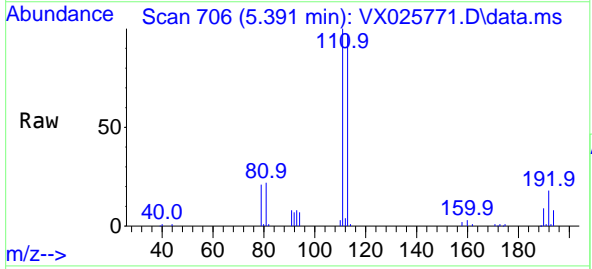
Instrument : MSVOA_X
 ClientSampleId :



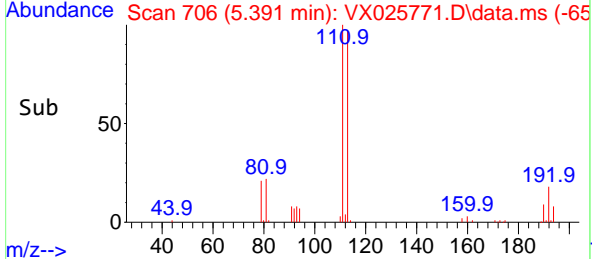
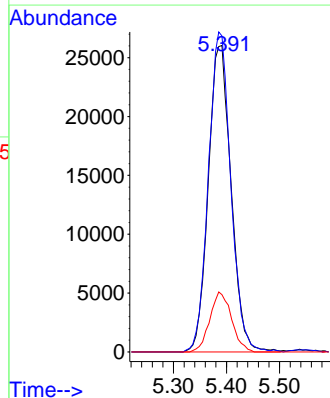
Tgt Ion:114 Resp: 236891
 Ion Ratio Lower Upper
 114 100
 63 20.4 0.0 40.0
 88 14.7 0.0 30.6

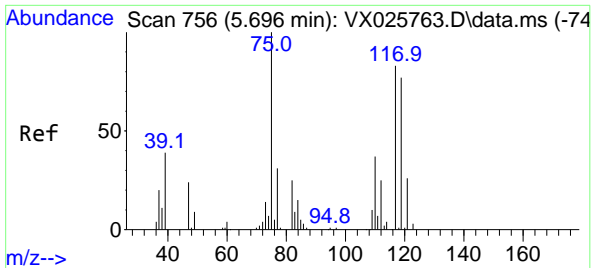


#35
 Dibromofluoromethane
 Concen: 47.064 ug/l
 RT: 5.391 min Scan# 706
 Delta R.T. -0.000 min
 Lab File: VX025771.D
 Acq: 14 Dec 2021 12:14



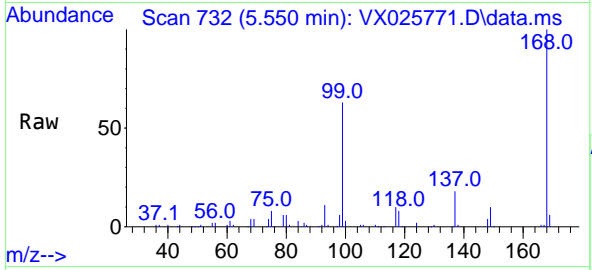
Tgt Ion:113 Resp: 77755
 Ion Ratio Lower Upper
 113 100
 111 102.2 81.8 122.8
 192 18.6 15.0 22.4



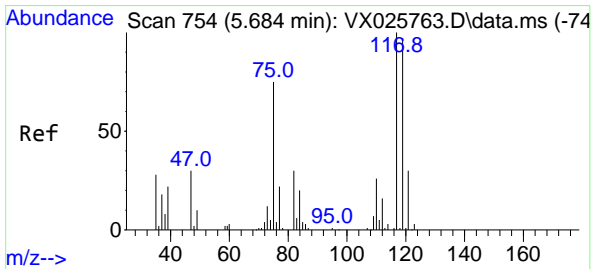
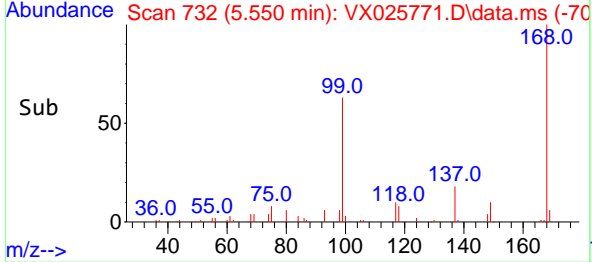
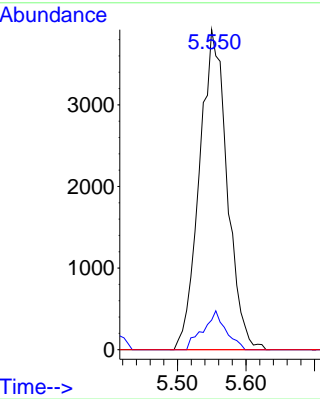


#36
 1,1-Dichloropropene
 Concen: 4.917 ug/l
 RT: 5.550 min Scan# 711
 Delta R.T. -0.146 min
 Lab File: VX025771.D
 Acq: 14 Dec 2021 12:14

Instrument : MSVOA_X
 ClientSampleId :

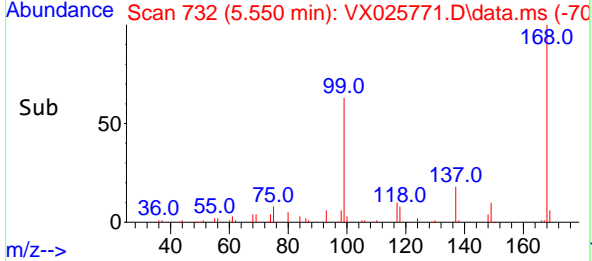
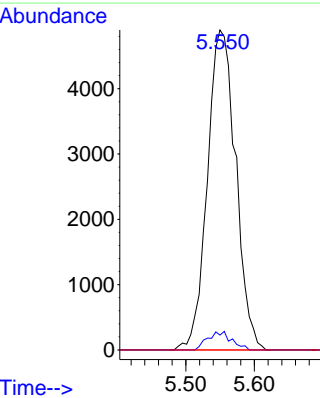
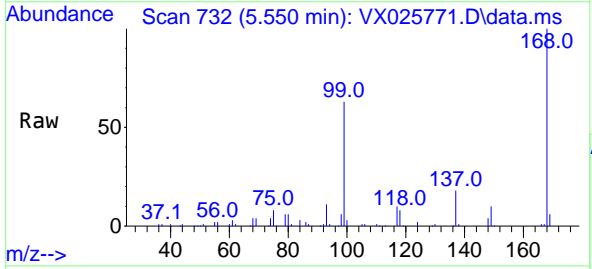


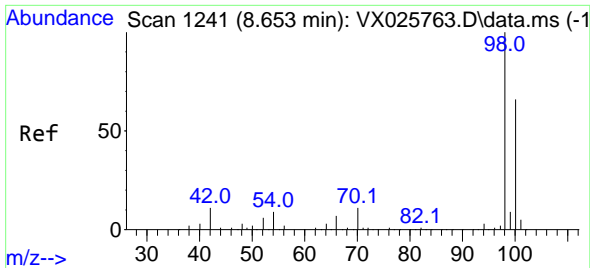
Tgt Ion: 75 Resp: 11016
 Ion Ratio Lower Upper
 75 100
 110 9.9 18.2 54.6#
 77 0.0 24.7 37.1#



#38
 Carbon Tetrachloride
 Concen: 5.388 ug/l
 RT: 5.550 min Scan# 732
 Delta R.T. -0.134 min
 Lab File: VX025771.D
 Acq: 14 Dec 2021 12:14

Tgt Ion: 117 Resp: 14046
 Ion Ratio Lower Upper
 117 100
 119 4.6 77.2 115.8#
 121 0.0 23.8 35.8#

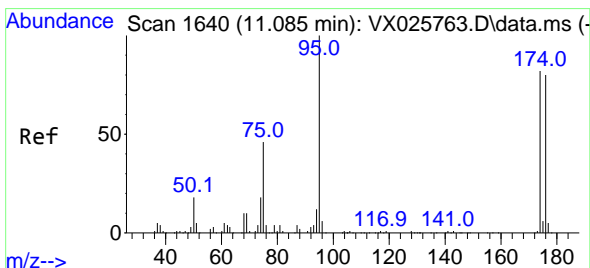
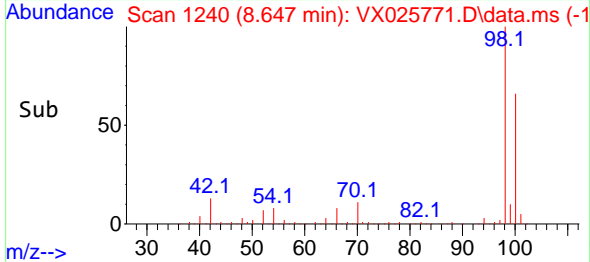
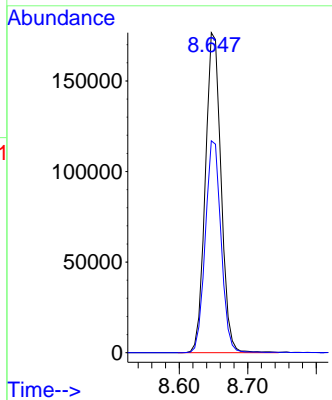
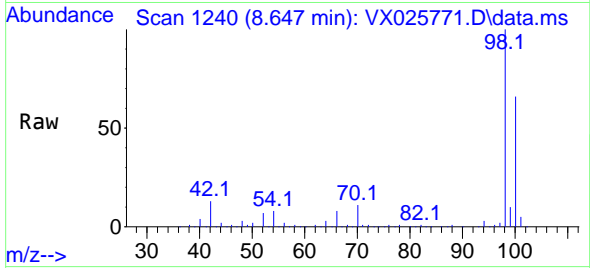




#50
 Toluene-d8
 Concen: 46.821 ug/l
 RT: 8.647 min Scan# 11
 Delta R.T. -0.006 min
 Lab File: VX025771.D
 Acq: 14 Dec 2021 12:14

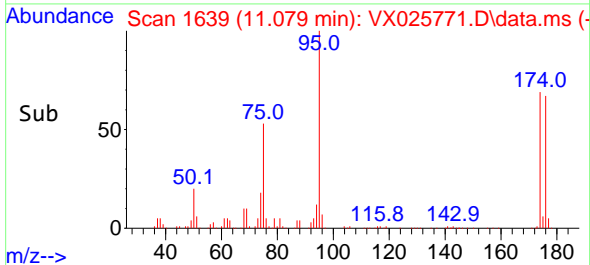
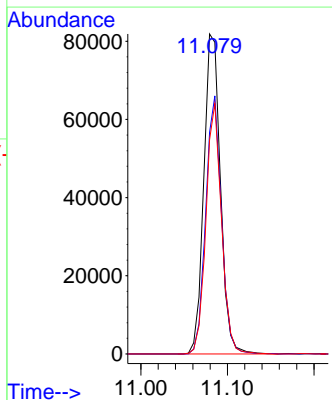
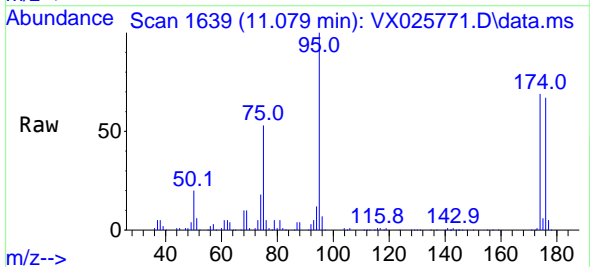
Instrument :
 MSVOA_X
 ClientSampleId :

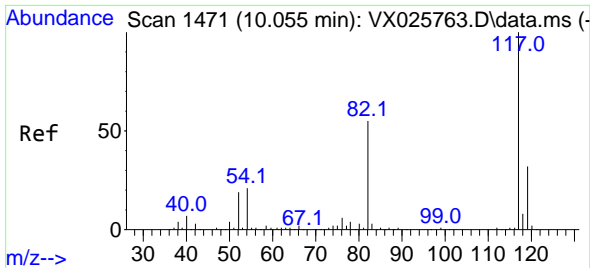
Tgt Ion: 98 Resp: 281837
 Ion Ratio Lower Upper
 98 100
 100 66.3 52.6 78.8



#62
 4-Bromofluorobenzene
 Concen: 47.704 ug/l
 RT: 11.079 min Scan# 1639
 Delta R.T. -0.006 min
 Lab File: VX025771.D
 Acq: 14 Dec 2021 12:14

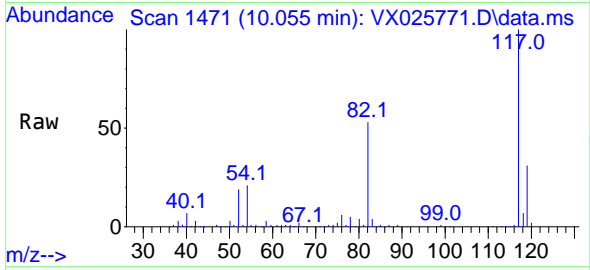
Tgt Ion: 95 Resp: 109080
 Ion Ratio Lower Upper
 95 100
 174 76.5 0.0 157.4
 176 73.4 0.0 154.6



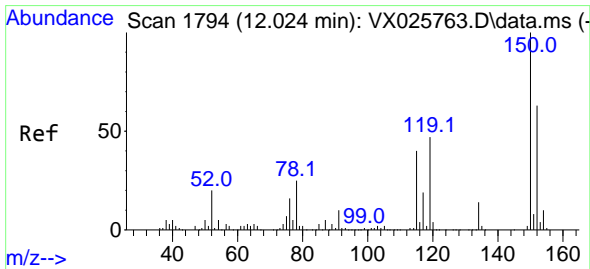
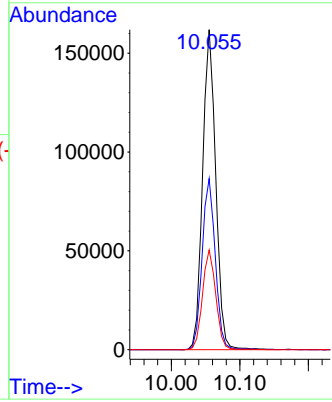
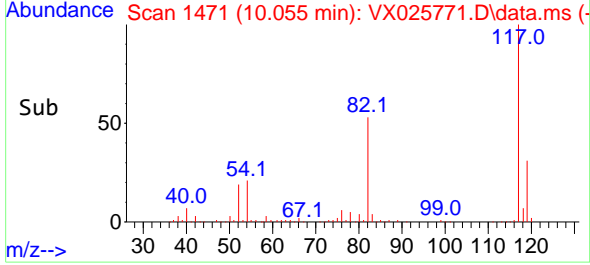


#63
 Chlorobenzene-d5
 Concen: 50.000 ug/l
 RT: 10.055 min Scan# 1471
 Delta R.T. -0.000 min
 Lab File: VX025771.D
 Acq: 14 Dec 2021 12:14

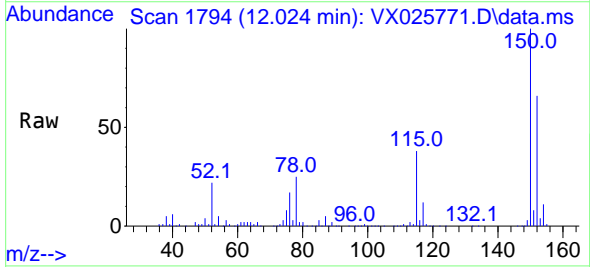
Instrument : MSVOA_X
 ClientSampleId :



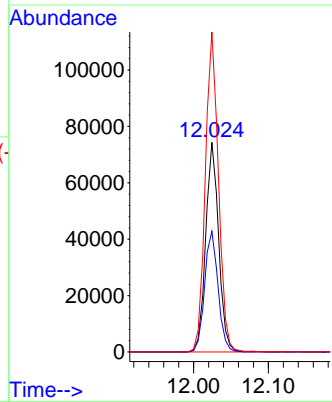
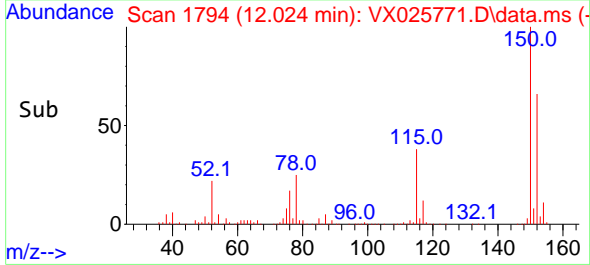
Tgt Ion:117 Resp: 215953
 Ion Ratio Lower Upper
 117 100
 82 53.4 43.8 65.6
 119 31.2 25.2 37.8

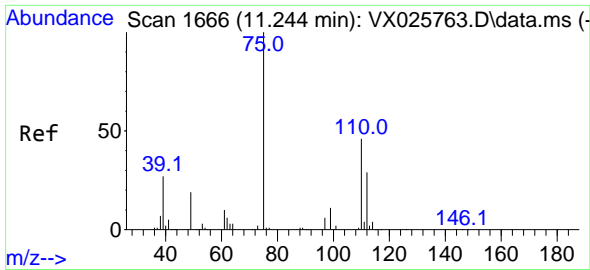


#72
 1,4-Dichlorobenzene-d4
 Concen: 50.000 ug/l
 RT: 12.024 min Scan# 1794
 Delta R.T. -0.000 min
 Lab File: VX025771.D
 Acq: 14 Dec 2021 12:14



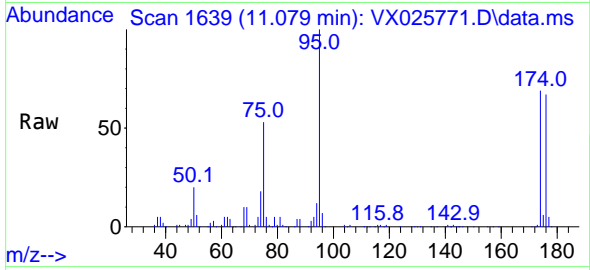
Tgt Ion:152 Resp: 89591
 Ion Ratio Lower Upper
 152 100
 115 59.6 41.3 123.9
 150 154.7 0.0 351.8



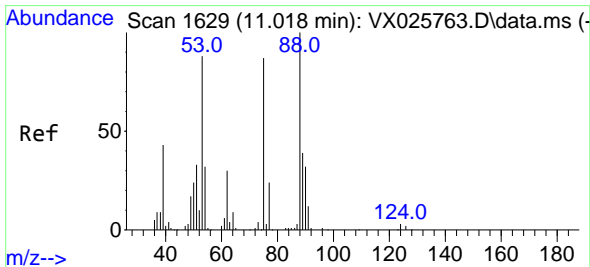
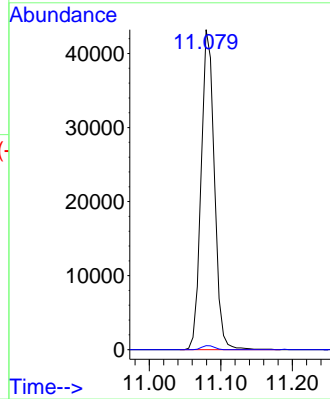
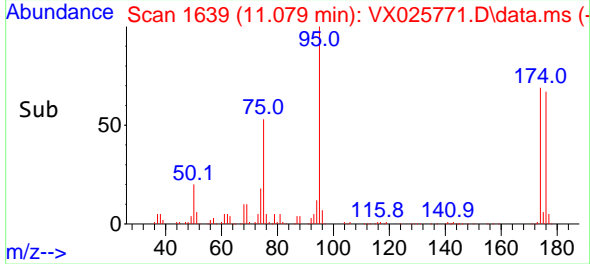


#76
 1,2,3-Trichloropropane
 Concen: 27.145 ug/l
 RT: 11.079 min Scan# 1639
 Delta R.T. -0.165 min
 Lab File: VX025771.D
 Acq: 14 Dec 2021 12:14

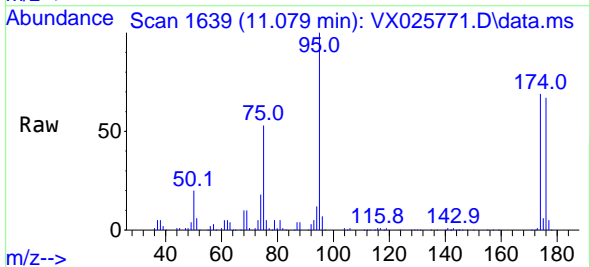
Instrument : MSVOA_X
 ClientSampleId :



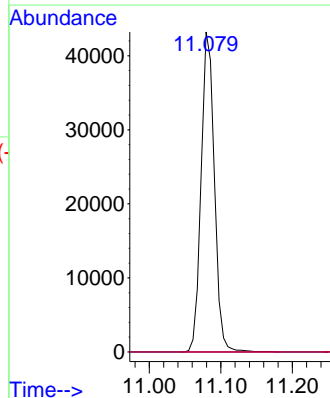
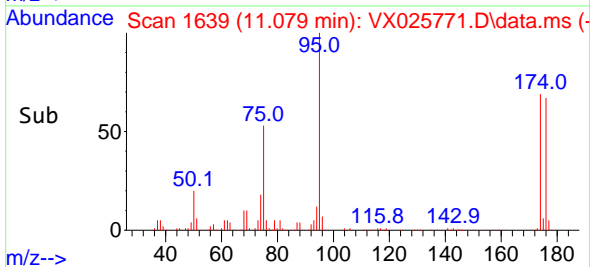
Tgt Ion: 75 Resp: 55720
 Ion Ratio Lower Upper
 75 100
 77 1.2 19.0 57.0#

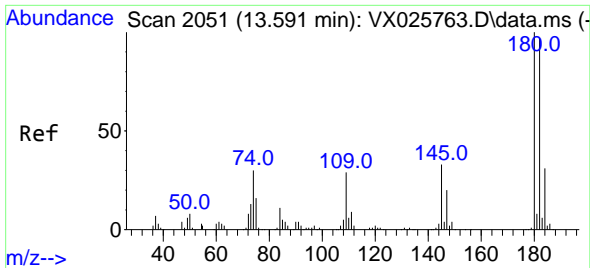


#81
 trans-1,4-Dichloro-2-butene
 Concen: 84.157 ug/l
 RT: 11.079 min Scan# 1639
 Delta R.T. 0.061 min
 Lab File: VX025771.D
 Acq: 14 Dec 2021 12:14



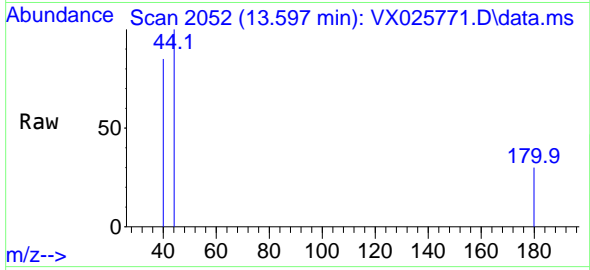
Tgt Ion: 75 Resp: 55720
 Ion Ratio Lower Upper
 75 100
 53 0.0 79.5 119.3#
 89 0.0 38.3 57.5#



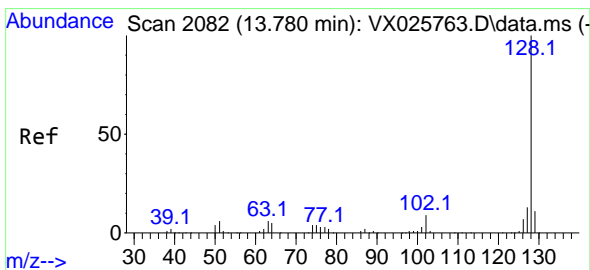
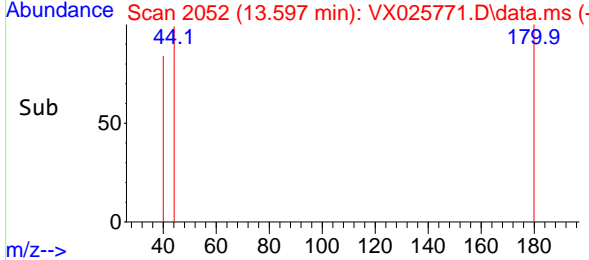
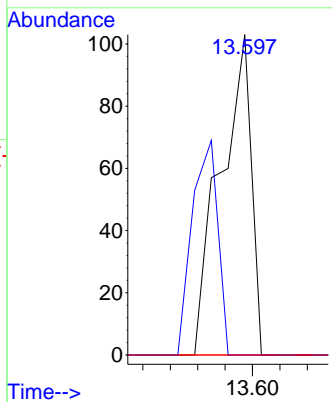


#93
 1,2,4-Trichlorobenzene
 Concen: 3.412 ug/l
 RT: 13.597 min Scan# 2051
 Delta R.T. 0.006 min
 Lab File: VX025771.D
 Acq: 14 Dec 2021 12:14

Instrument : MSVOA_X
 ClientSampleId :



Tgt Ion:180 Resp: 80
 Ion Ratio Lower Upper
 180 100
 182 56.3 47.2 141.6
 145 0.0 16.3 48.9#



#95
 Naphthalene
 Concen: 2.440 ug/l
 RT: 13.780 min Scan# 2082
 Delta R.T. 0.000 min
 Lab File: VX025771.D
 Acq: 14 Dec 2021 12:14

Tgt Ion:128 Resp: 184
 Ion Ratio Lower Upper
 128 100
 127 0.0 10.3 15.5#
 129 0.0 8.8 13.2#

