

Data Path : Z:\voasrv\HPCHEM1\MSVOA\_X\Data\VX121421\  
 Data File : VX025777.D  
 Acq On : 14 Dec 2021 15:22  
 Operator : JC/MD  
 Sample : M5031-03  
 Misc : 5.0mL/MSVOA\_X/WATER  
 ALS Vial : 10 Sample Multiplier: 1

Instrument :  
 MSVOA\_X  
 ClientSampleId :

Quant Time: Dec 15 07:04:42 2021  
 Quant Method : Z:\voasrv\HPCHEM1\MSVOA\_X\Method\82X121321W.M  
 Quant Title : SW846 8260  
 QLast Update : Tue Dec 14 07:02:11 2021  
 Response via : Initial Calibration

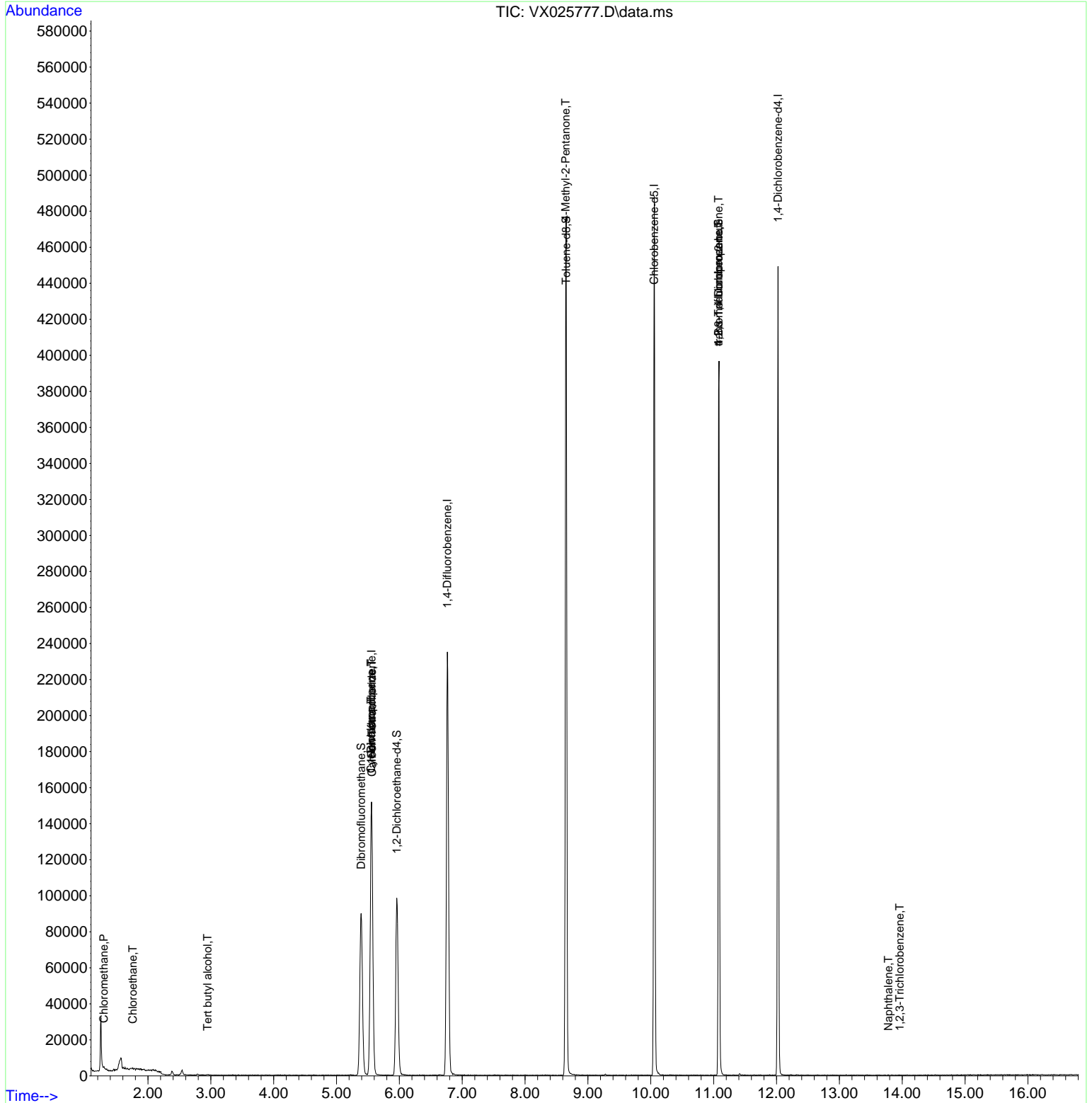
Compound	R.T.	QIon	Response	Conc	Units	Dev(Min)
-----						
Internal Standards						
1) Pentafluorobenzene	5.556	168	140379	50.000	ug/l	0.00
34) 1,4-Difluorobenzene	6.763	114	241396	50.000	ug/l	0.00
63) Chlorobenzene-d5	10.055	117	218522	50.000	ug/l	0.00
72) 1,4-Dichlorobenzene-d4	12.024	152	91566	50.000	ug/l	0.00
System Monitoring Compounds						
33) 1,2-Dichloroethane-d4	5.958	65	93534	46.308	ug/l	0.00
Spiked Amount	50.000	Range 78 - 117	Recovery	=	92.620%	
35) Dibromofluoromethane	5.391	113	79205	47.047	ug/l	0.00
Spiked Amount	50.000	Range 75 - 124	Recovery	=	94.100%	
50) Toluene-d8	8.653	98	283938	46.290	ug/l	0.00
Spiked Amount	50.000	Range 92 - 112	Recovery	=	92.580%	
62) 4-Bromofluorobenzene	11.079	95	108055	46.374	ug/l	0.00
Spiked Amount	50.000	Range 83 - 123	Recovery	=	92.740%	
Target Compounds						
						Qvalue
3) Chloromethane	1.295	50	595	0.364	ug/l #	74
6) Chloroethane	1.758	64	386	0.306	ug/l #	42
11) Tert butyl alcohol	2.947	59	157	0.387	ug/l #	73
16) Acetone	2.380	43	2108	Below Cal		95
20) Methylene Chloride	2.794	84	297	Below Cal		49
31) Cyclohexane	5.550	56	3088	1.257	ug/l #	1
36) 1,1-Dichloropropene	5.550	75	11298	4.949	ug/l #	50
38) Carbon Tetrachloride	5.562	117	14837	5.585	ug/l #	15
51) 4-Methyl-2-Pentanone	8.647	43	1326	0.496	ug/l #	1
76) 1,2,3-Trichloropropane	11.079	75	55155	26.290	ug/l #	39
81) trans-1,4-Dichloro-2-b...	11.079	75	55155	81.506	ug/l #	10
95) Naphthalene	13.780	128	82	2.424	ug/l #	69
96) 1,2,3-Trichlorobenzene	13.963	180	19	3.003	ug/l #	12

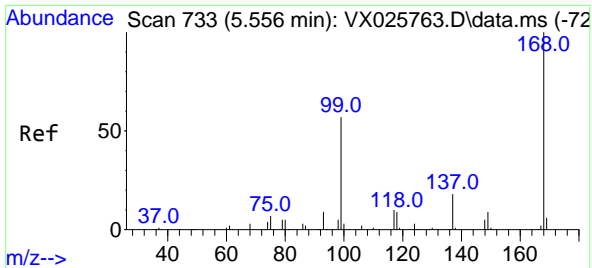
(#) = qualifier out of range (m) = manual integration (+) = signals summed

Data Path : Z:\voasrv\HPCHEM1\MSVOA\_X\Data\VX121421\  
 Data File : VX025777.D  
 Acq On : 14 Dec 2021 15:22  
 Operator : JC/MD  
 Sample : M5031-03  
 Misc : 5.0mL/MSVOA\_X/WATER  
 ALS Vial : 10 Sample Multiplier: 1

Instrument :  
 MSVOA\_X  
 ClientSampleId :

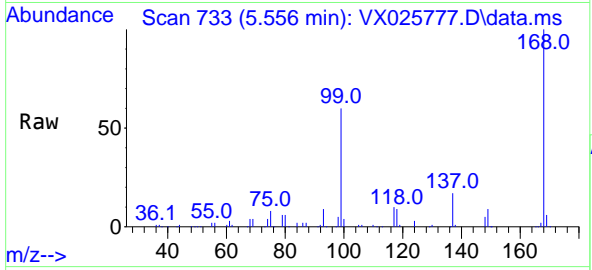
Quant Time: Dec 15 07:04:42 2021  
 Quant Method : Z:\voasrv\HPCHEM1\MSVOA\_X\Method\82X121321W.M  
 Quant Title : SW846 8260  
 QLast Update : Tue Dec 14 07:02:11 2021  
 Response via : Initial Calibration



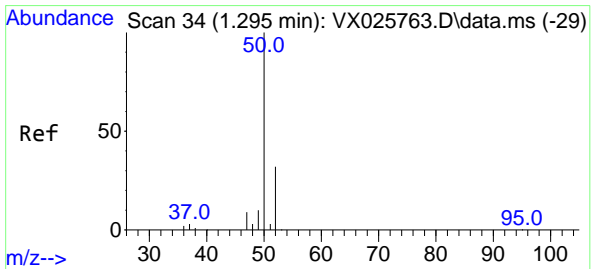
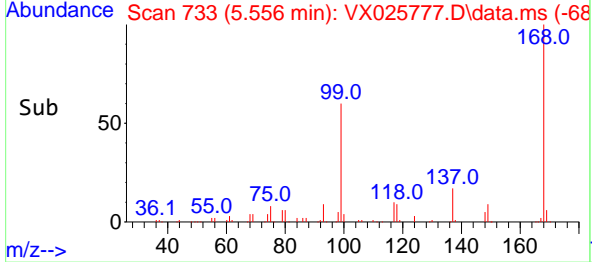
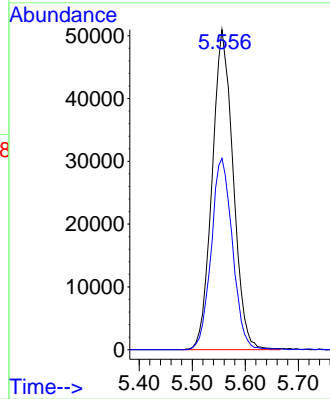


#1  
 Pentafluorobenzene  
 Concen: 50.000 ug/l  
 RT: 5.556 min Scan# 71  
 Delta R.T. -0.000 min  
 Lab File: VX025777.D  
 Acq: 14 Dec 2021 15:22

Instrument :  
 MSVOA\_X  
 ClientSampleId :

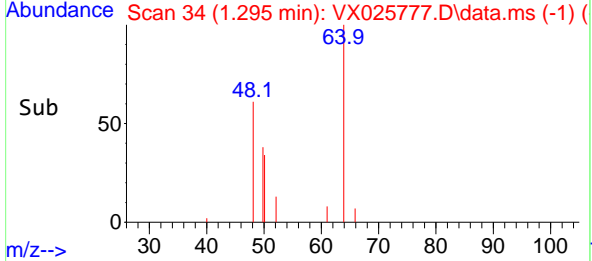
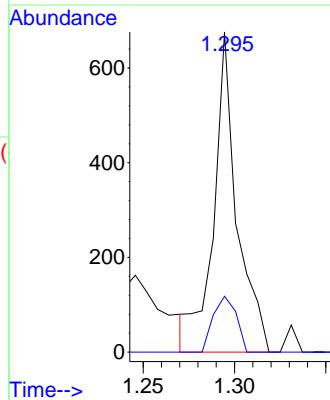
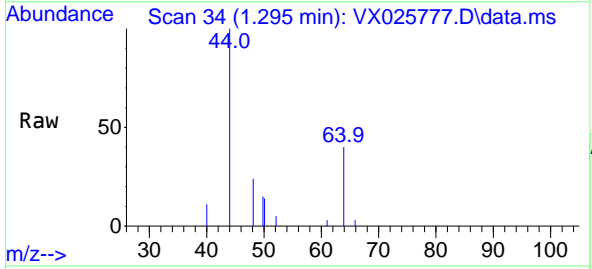


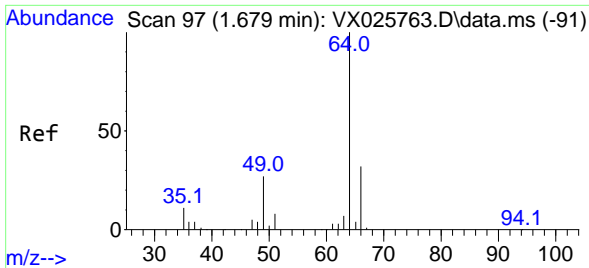
Tgt Ion:168 Resp: 140379  
 Ion Ratio Lower Upper  
 168 100  
 99 59.8 45.8 68.8



#3  
 Chloromethane  
 Concen: 0.364 ug/l  
 RT: 1.295 min Scan# 34  
 Delta R.T. -0.000 min  
 Lab File: VX025777.D  
 Acq: 14 Dec 2021 15:22

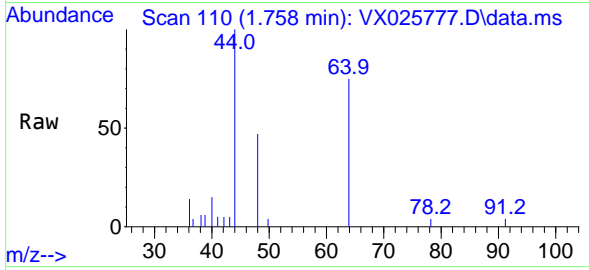
Tgt Ion: 50 Resp: 595  
 Ion Ratio Lower Upper  
 50 100  
 52 17.5 25.4 38.0#



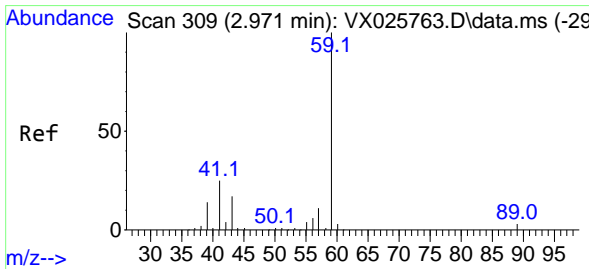
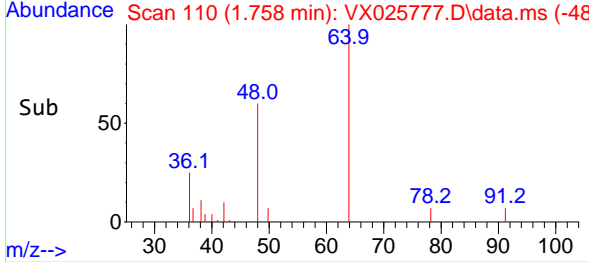
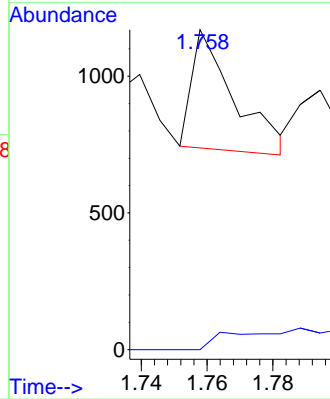


#6  
 Chloroethane  
 Concen: 0.306 ug/l  
 RT: 1.758 min Scan# 11  
 Delta R.T. 0.079 min  
 Lab File: VX025777.D  
 Acq: 14 Dec 2021 15:22

Instrument : MSVOA\_X  
 ClientSampleId :

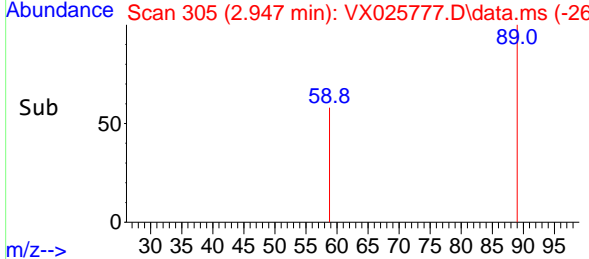
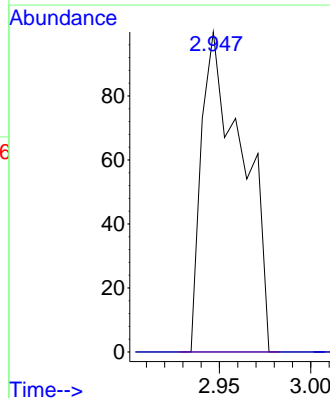
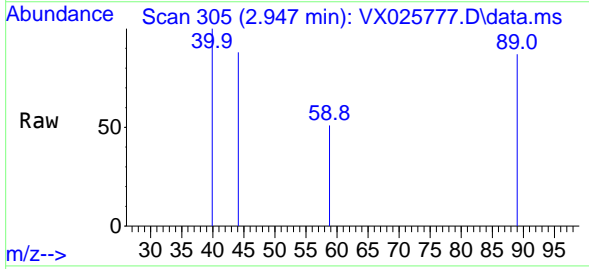


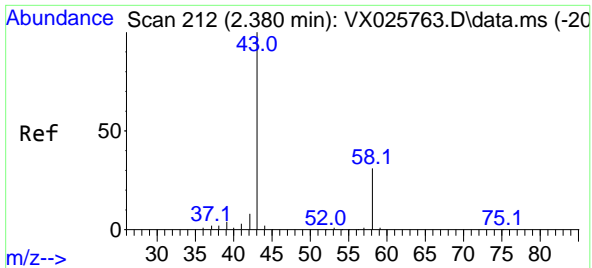
Tgt Ion: 64 Resp: 386  
 Ion Ratio Lower Upper  
 64 100  
 66 0.0 25.9 38.9#



#11  
 Tert butyl alcohol  
 Concen: 0.387 ug/l  
 RT: 2.947 min Scan# 305  
 Delta R.T. -0.024 min  
 Lab File: VX025777.D  
 Acq: 14 Dec 2021 15:22

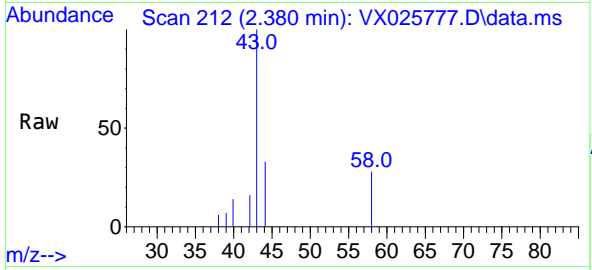
Tgt Ion: 59 Resp: 157  
 Ion Ratio Lower Upper  
 59 100  
 57 0.0 8.2 12.2#



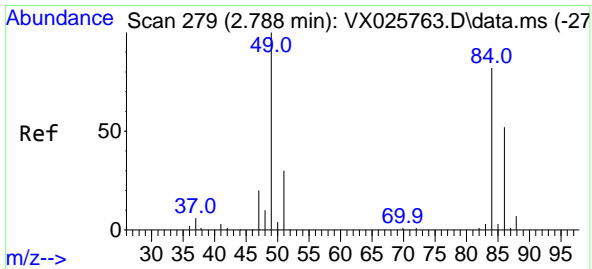
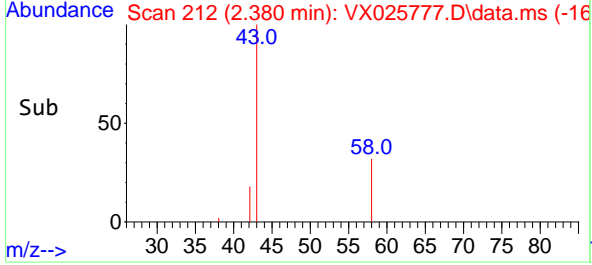
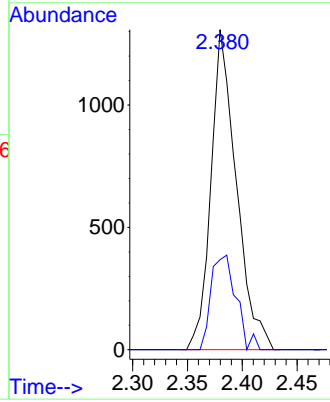


#16  
 Acetone  
 Concen: Below Cal  
 RT: 2.380 min Scan# 212  
 Delta R.T. -0.000 min  
 Lab File: VX025777.D  
 Acq: 14 Dec 2021 15:22

Instrument : MSVOA\_X  
 ClientSampleId :

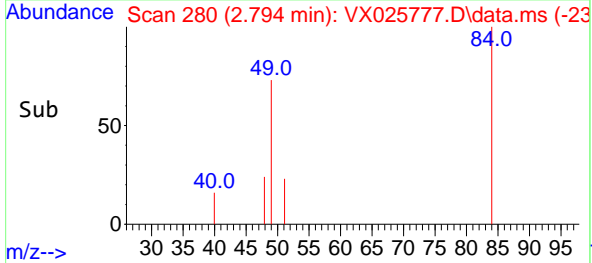
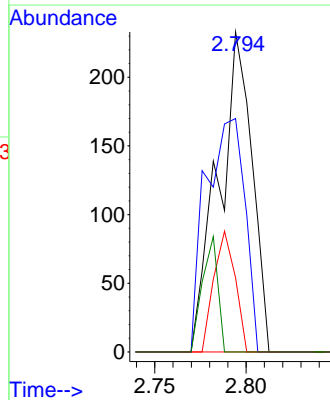
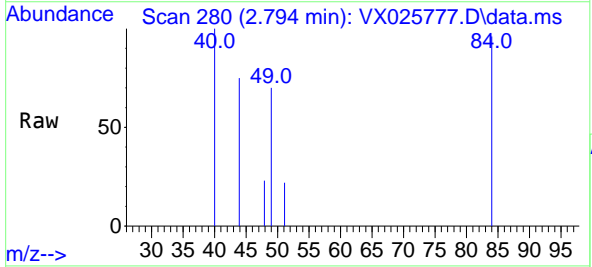


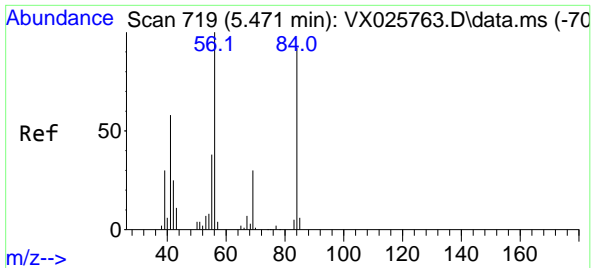
Tgt Ion: 43 Resp: 2108  
 Ion Ratio Lower Upper  
 43 100  
 58 28.1 24.8 37.2



#20  
 Methylene Chloride  
 Concen: Below Cal  
 RT: 2.794 min Scan# 280  
 Delta R.T. 0.006 min  
 Lab File: VX025777.D  
 Acq: 14 Dec 2021 15:22

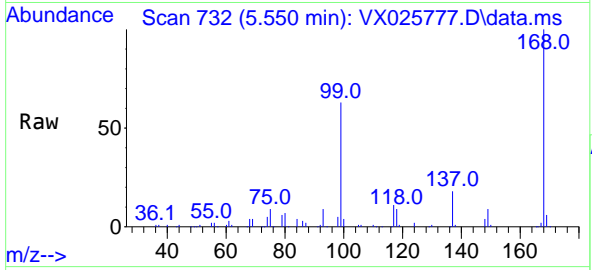
Tgt Ion: 84 Resp: 297  
 Ion Ratio Lower Upper  
 84 100  
 49 73.0 97.1 145.7#  
 51 23.2 29.3 43.9#  
 86 0.0 50.8 76.2#



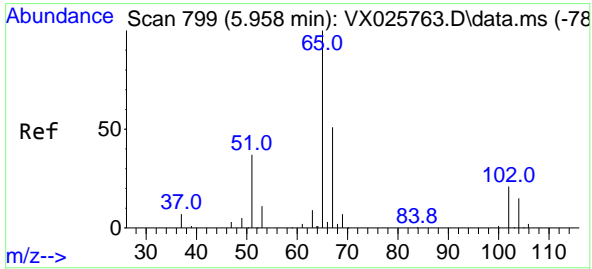
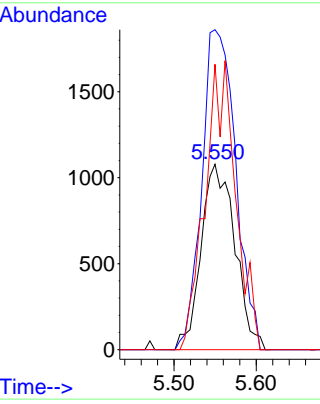
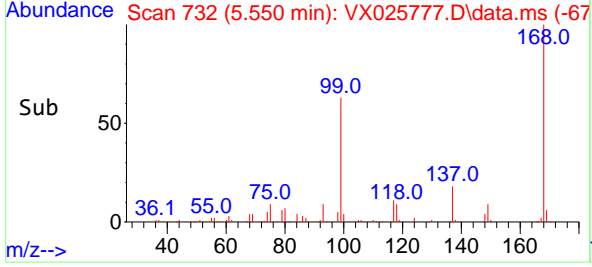


#31  
 Cyclohexane  
 Concen: 1.257 ug/l  
 RT: 5.550 min Scan# 719  
 Delta R.T. 0.079 min  
 Lab File: VX025777.D  
 Acq: 14 Dec 2021 15:22

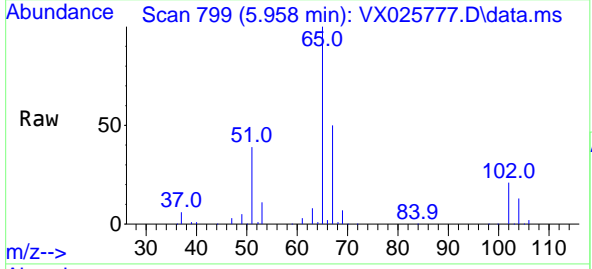
Instrument : MSVOA\_X  
 ClientSampleId :



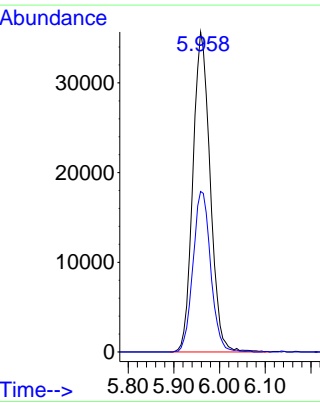
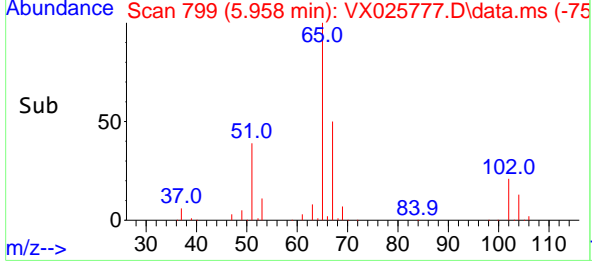
Tgt Ion: 56 Resp: 3088  
 Ion Ratio Lower Upper  
 56 100  
 69 172.6 23.9 35.9#  
 84 154.0 73.2 109.8#

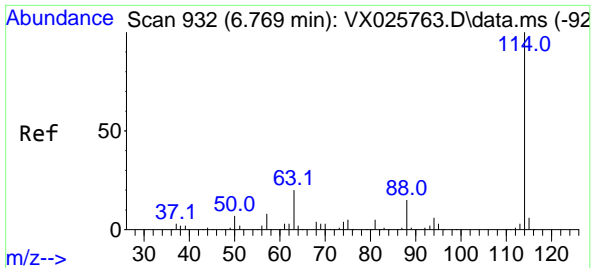


#33  
 1,2-Dichloroethane-d4  
 Concen: 46.308 ug/l  
 RT: 5.958 min Scan# 799  
 Delta R.T. -0.000 min  
 Lab File: VX025777.D  
 Acq: 14 Dec 2021 15:22



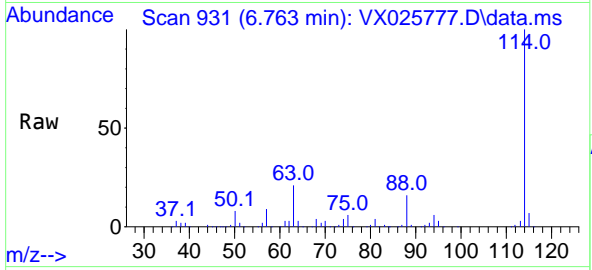
Tgt Ion: 65 Resp: 93534  
 Ion Ratio Lower Upper  
 65 100  
 67 51.4 0.0 103.4





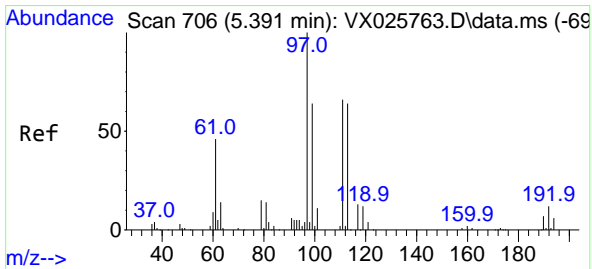
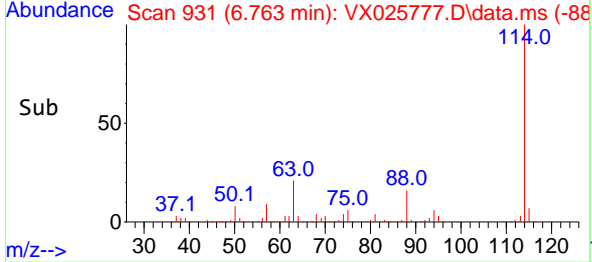
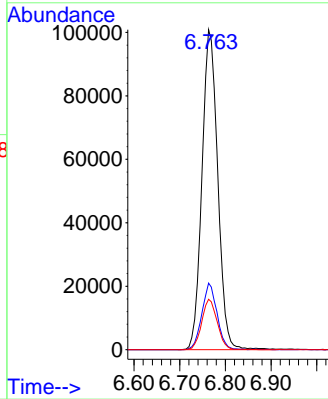
#34  
 1,4-Difluorobenzene  
 Concen: 50.000 ug/l  
 RT: 6.763 min Scan# 911  
 Delta R.T. -0.006 min  
 Lab File: VX025777.D  
 Acq: 14 Dec 2021 15:22

Instrument : MSVOA\_X  
 ClientSampleId :



Tgt Ion:114 Resp: 241396

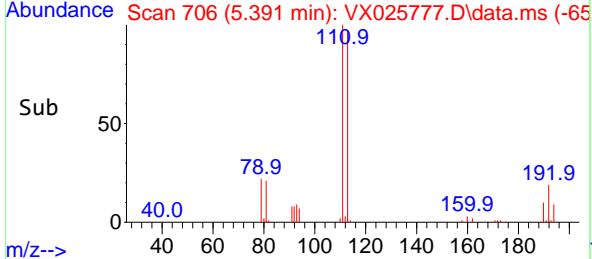
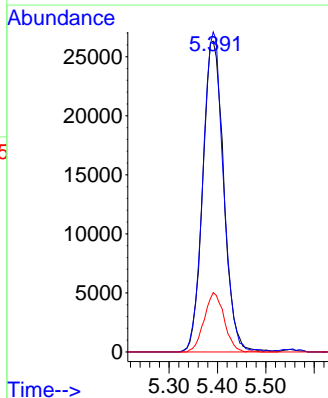
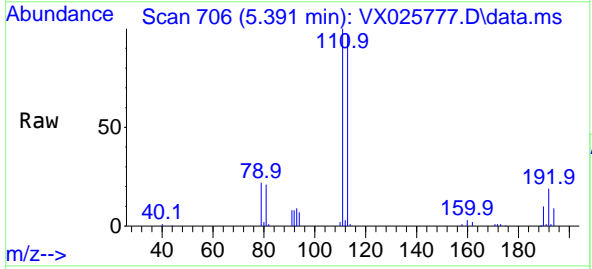
Ion	Ratio	Lower	Upper
114	100		
63	20.8	0.0	40.0
88	15.7	0.0	30.6

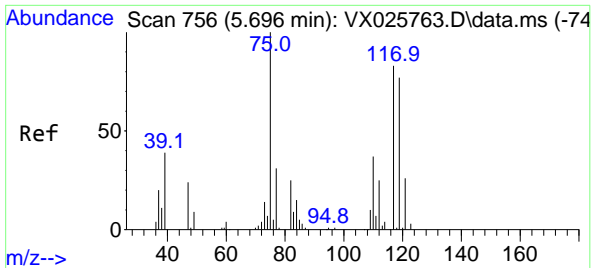


#35  
 Dibromofluoromethane  
 Concen: 47.047 ug/l  
 RT: 5.391 min Scan# 706  
 Delta R.T. -0.000 min  
 Lab File: VX025777.D  
 Acq: 14 Dec 2021 15:22

Tgt Ion:113 Resp: 79205

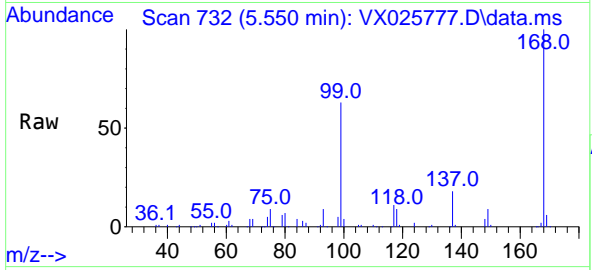
Ion	Ratio	Lower	Upper
113	100		
111	100.6	81.8	122.8
192	18.2	15.0	22.4



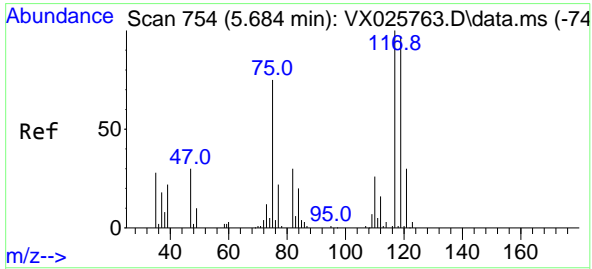
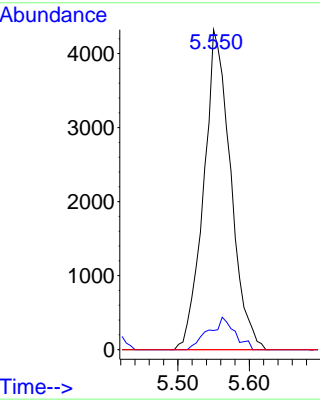
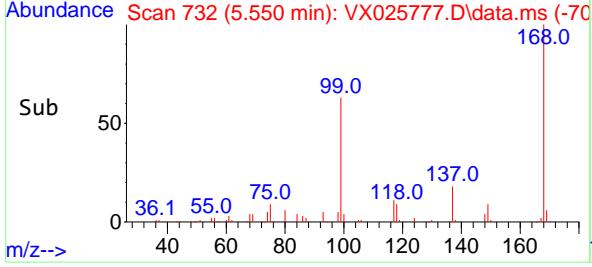


#36  
 1,1-Dichloropropene  
 Concen: 4.949 ug/l  
 RT: 5.550 min Scan# 711  
 Delta R.T. -0.146 min  
 Lab File: VX025777.D  
 Acq: 14 Dec 2021 15:22

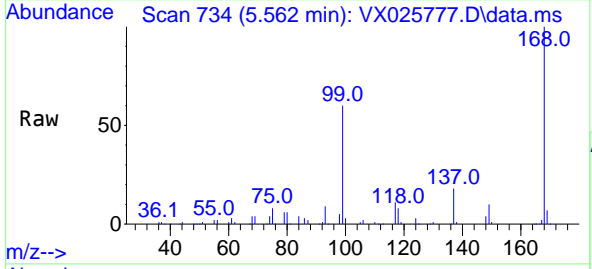
Instrument :  
 MSVOA\_X  
 ClientSampleId :



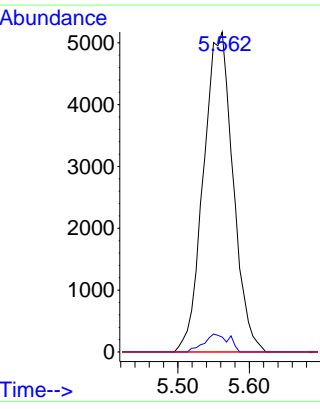
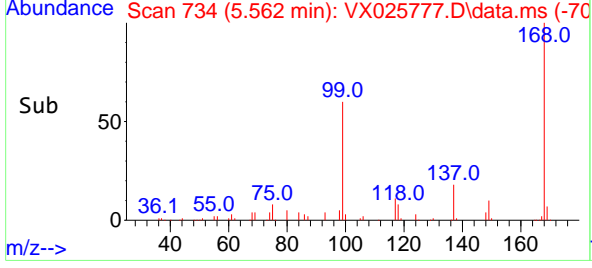
Tgt Ion: 75 Resp: 11298  
 Ion Ratio Lower Upper  
 75 100  
 110 9.8 18.2 54.6#  
 77 0.0 24.7 37.1#



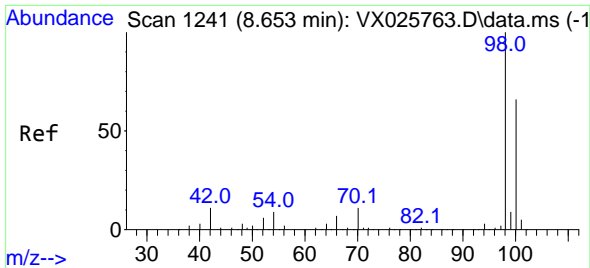
#38  
 Carbon Tetrachloride  
 Concen: 5.585 ug/l  
 RT: 5.562 min Scan# 734  
 Delta R.T. -0.122 min  
 Lab File: VX025777.D  
 Acq: 14 Dec 2021 15:22



Tgt Ion: 117 Resp: 14837  
 Ion Ratio Lower Upper  
 117 100  
 119 4.7 77.2 115.8#  
 121 0.0 23.8 35.8#

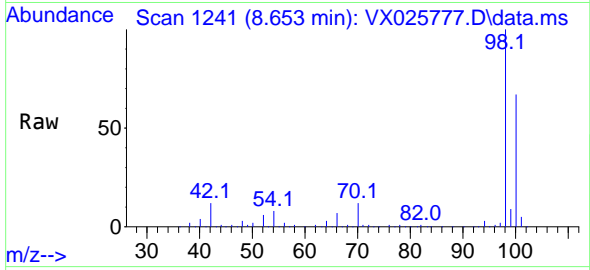




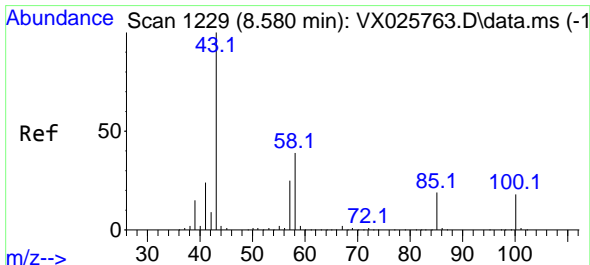
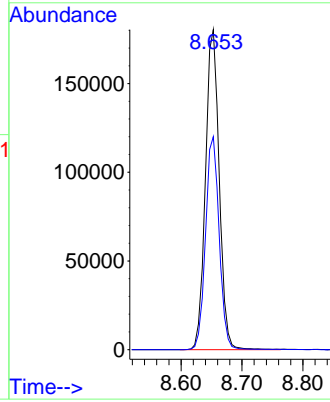
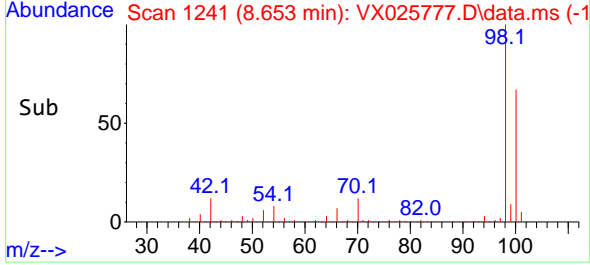


#50  
 Toluene-d8  
 Concen: 46.290 ug/l  
 RT: 8.653 min Scan# 11  
 Delta R.T. -0.000 min  
 Lab File: VX025777.D  
 Acq: 14 Dec 2021 15:22

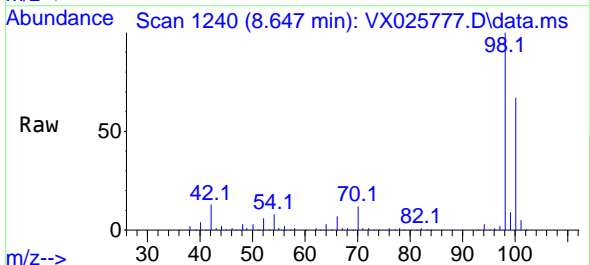
Instrument :  
 MSVOA\_X  
 ClientSampleId :



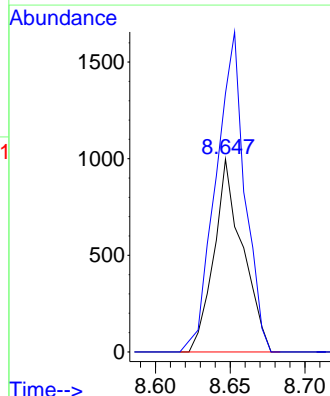
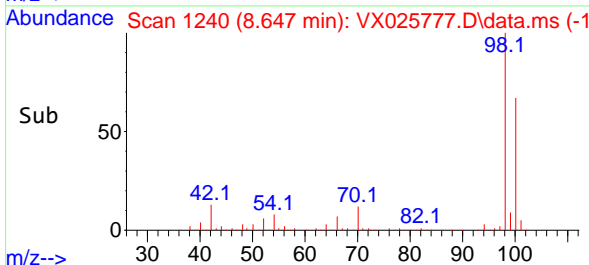
Tgt Ion: 98 Resp: 283938  
 Ion Ratio Lower Upper  
 98 100  
 100 65.8 52.6 78.8

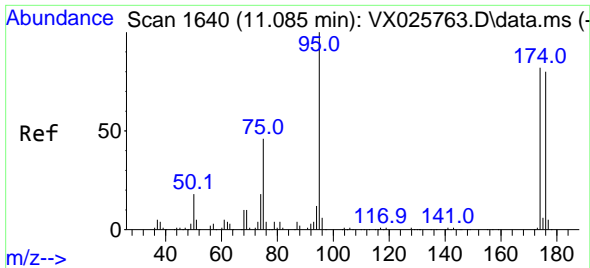


#51  
 4-Methyl-2-Pentanone  
 Concen: 0.496 ug/l  
 RT: 8.647 min Scan# 1240  
 Delta R.T. 0.067 min  
 Lab File: VX025777.D  
 Acq: 14 Dec 2021 15:22



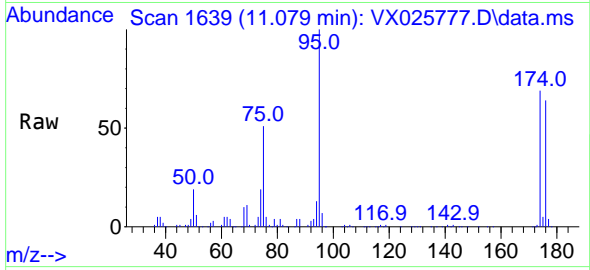
Tgt Ion: 43 Resp: 1326  
 Ion Ratio Lower Upper  
 43 100  
 58 168.9 30.8 46.2#



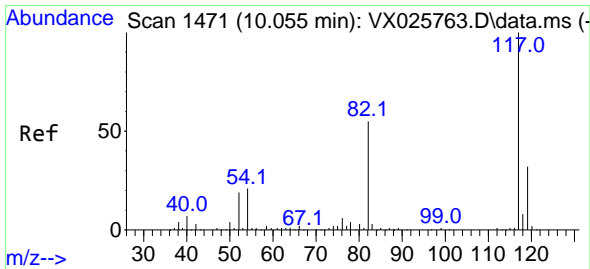
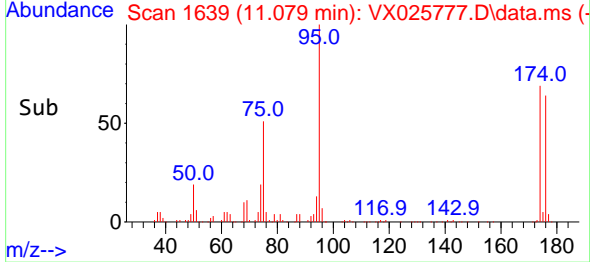
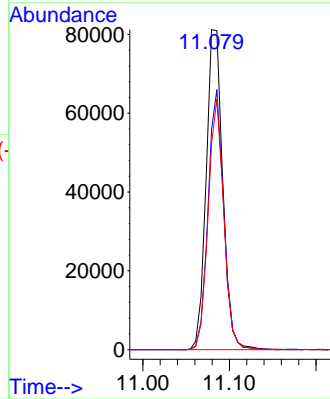


#62  
 4-Bromofluorobenzene  
 Concen: 46.374 ug/l  
 RT: 11.079 min Scan# 1639  
 Delta R.T. -0.006 min  
 Lab File: VX025777.D  
 Acq: 14 Dec 2021 15:22

Instrument : MSVOA\_X  
 ClientSampleId :

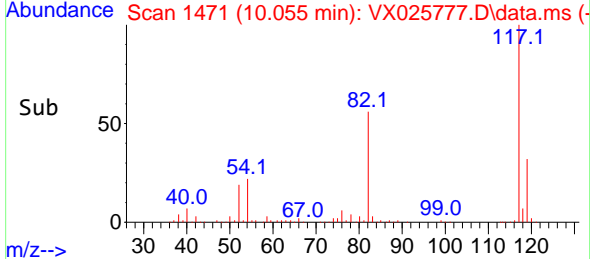
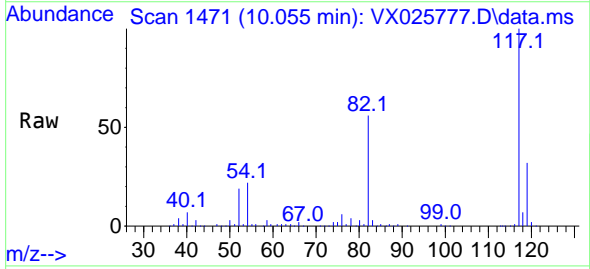
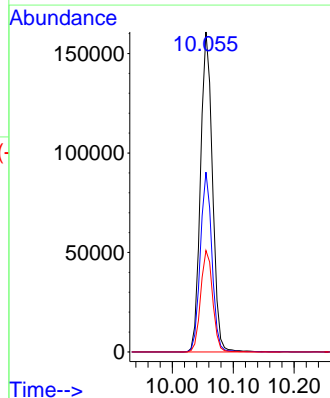


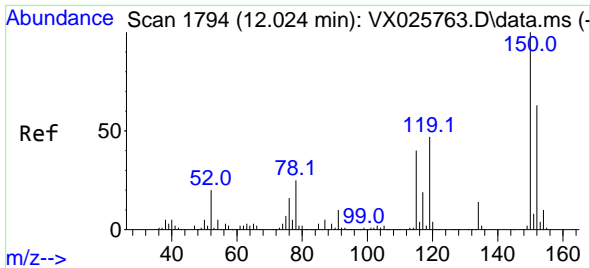
Tgt Ion: 95 Resp: 108055  
 Ion Ratio Lower Upper  
 95 100  
 174 76.9 0.0 157.4  
 176 73.6 0.0 154.6



#63  
 Chlorobenzene-d5  
 Concen: 50.000 ug/l  
 RT: 10.055 min Scan# 1471  
 Delta R.T. -0.000 min  
 Lab File: VX025777.D  
 Acq: 14 Dec 2021 15:22

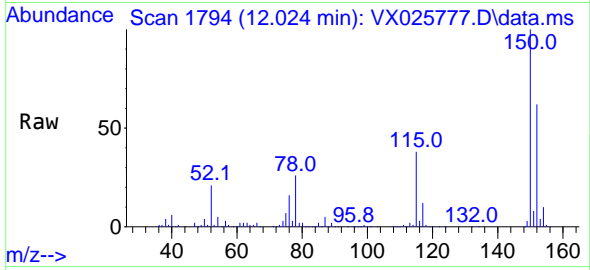
Tgt Ion: 117 Resp: 218522  
 Ion Ratio Lower Upper  
 117 100  
 82 56.2 43.8 65.6  
 119 31.7 25.2 37.8



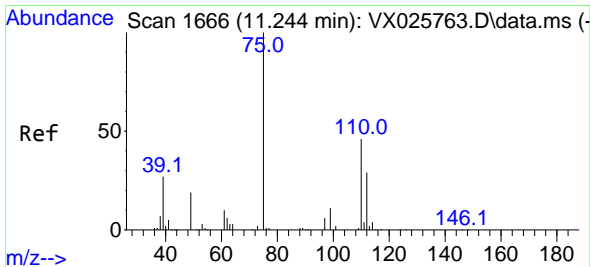
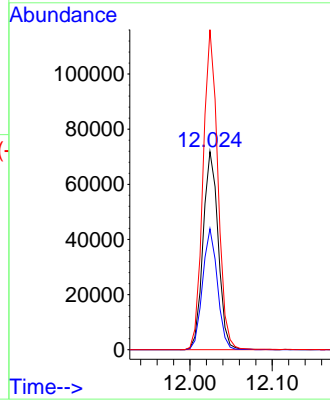
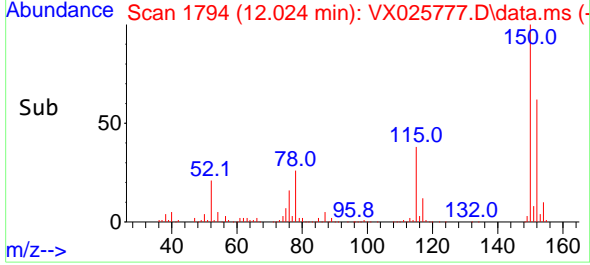


#72  
 1,4-Dichlorobenzene-d4  
 Concen: 50.000 ug/l  
 RT: 12.024 min Scan# 1  
 Delta R.T. -0.000 min  
 Lab File: VX025777.D  
 Acq: 14 Dec 2021 15:22

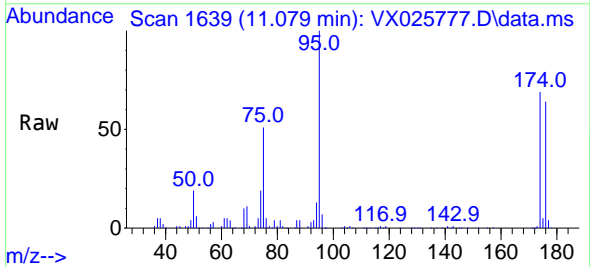
Instrument :  
 MSVOA\_X  
 ClientSampleId :



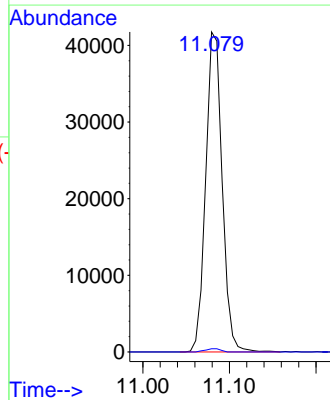
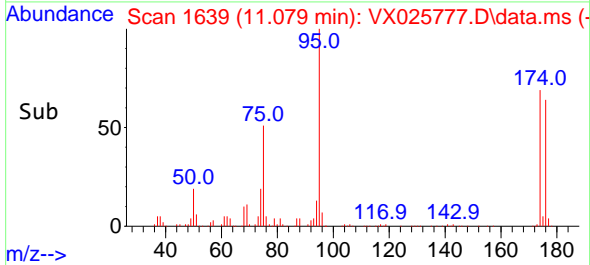
Tgt Ion:152 Resp: 91566  
 Ion Ratio Lower Upper  
 152 100  
 115 59.8 41.3 123.9  
 150 158.5 0.0 351.8

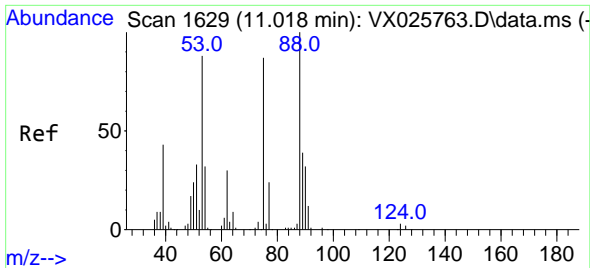


#76  
 1,2,3-Trichloropropane  
 Concen: 26.290 ug/l  
 RT: 11.079 min Scan# 1639  
 Delta R.T. -0.165 min  
 Lab File: VX025777.D  
 Acq: 14 Dec 2021 15:22



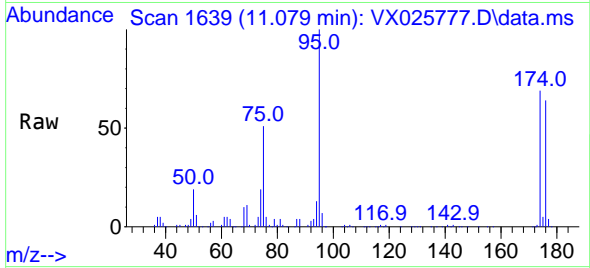
Tgt Ion: 75 Resp: 55155  
 Ion Ratio Lower Upper  
 75 100  
 77 1.0 19.0 57.0#



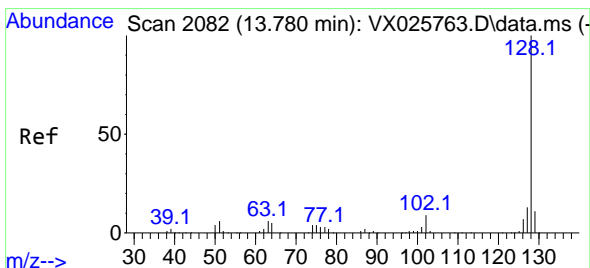
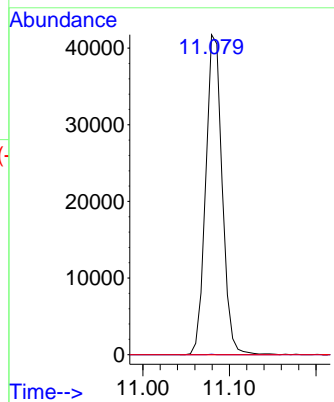
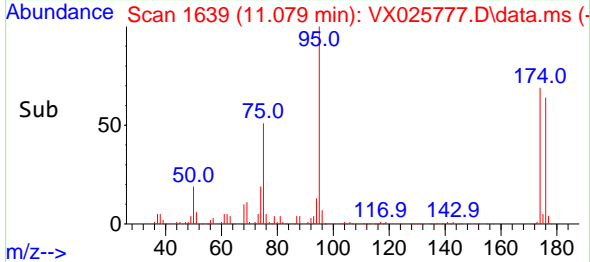


#81  
 trans-1,4-Dichloro-2-butene  
 Concen: 81.506 ug/l  
 RT: 11.079 min Scan# 1  
 Delta R.T. 0.061 min  
 Lab File: VX025777.D  
 Acq: 14 Dec 2021 15:22

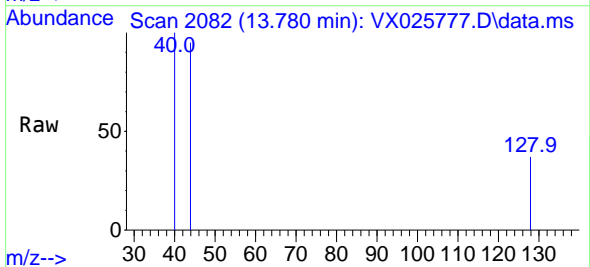
Instrument :  
 MSVOA\_X  
 ClientSampleId :



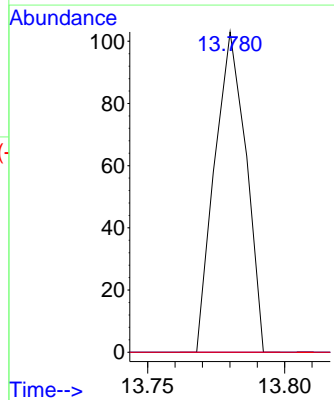
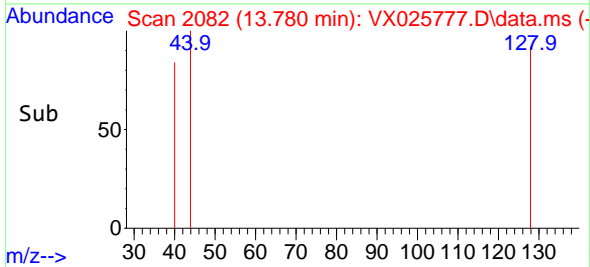
Tgt Ion: 75 Resp: 55155  
 Ion Ratio Lower Upper  
 75 100  
 53 0.0 79.5 119.3#  
 89 0.0 38.3 57.5#

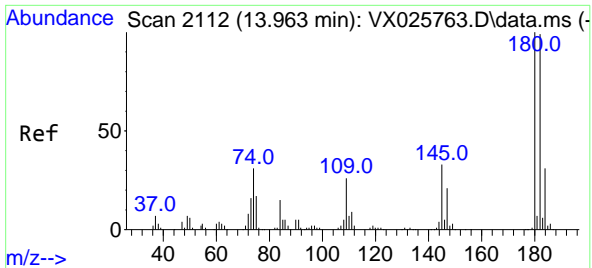


#95  
 Naphthalene  
 Concen: 2.424 ug/l  
 RT: 13.780 min Scan# 2082  
 Delta R.T. 0.000 min  
 Lab File: VX025777.D  
 Acq: 14 Dec 2021 15:22



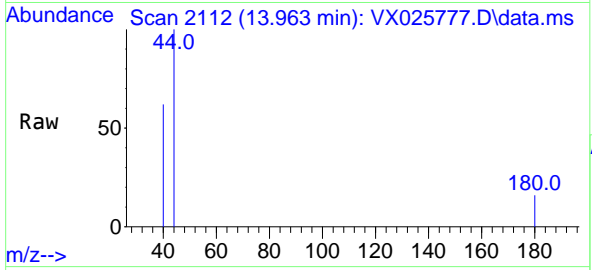
Tgt Ion: 128 Resp: 82  
 Ion Ratio Lower Upper  
 128 100  
 127 0.0 10.3 15.5#  
 129 0.0 8.8 13.2#





#96  
 1,2,3-Trichlorobenzene  
 Concen: 3.003 ug/l  
 RT: 13.963 min Scan# 21  
 Delta R.T. -0.000 min  
 Lab File: VX025777.D  
 Acq: 14 Dec 2021 15:22

Instrument :  
 MSVOA\_X  
 ClientSampleId :



Tgt Ion:180 Resp: 19

Ion	Ratio	Lower	Upper
180	100		
182	0.0	47.5	142.6#
145	0.0	16.7	50.1#

