

Data Path : Z:\voasrv\HPCHEM1\MSVOA\_X\Data\VX121522\  
 Data File : VX033438.D  
 Acq On : 15 Dec 2022 13:41  
 Operator : JC/MD  
 Sample : N6070-05  
 Misc : 5.0mL/MSVOA\_X/WATER  
 ALS Vial : 10 Sample Multiplier: 1

Instrument :  
 MSVOA\_X  
 ClientSampleId :  
 OWBR-03-128-148-121422

Quant Time: Dec 16 01:02:02 2022  
 Quant Method : Z:\voasrv\HPCHEM1\MSVOA\_X\Method\82X120722W.M  
 Quant Title : SW846 8260  
 QLast Update : Wed Dec 07 12:43:54 2022  
 Response via : Initial Calibration

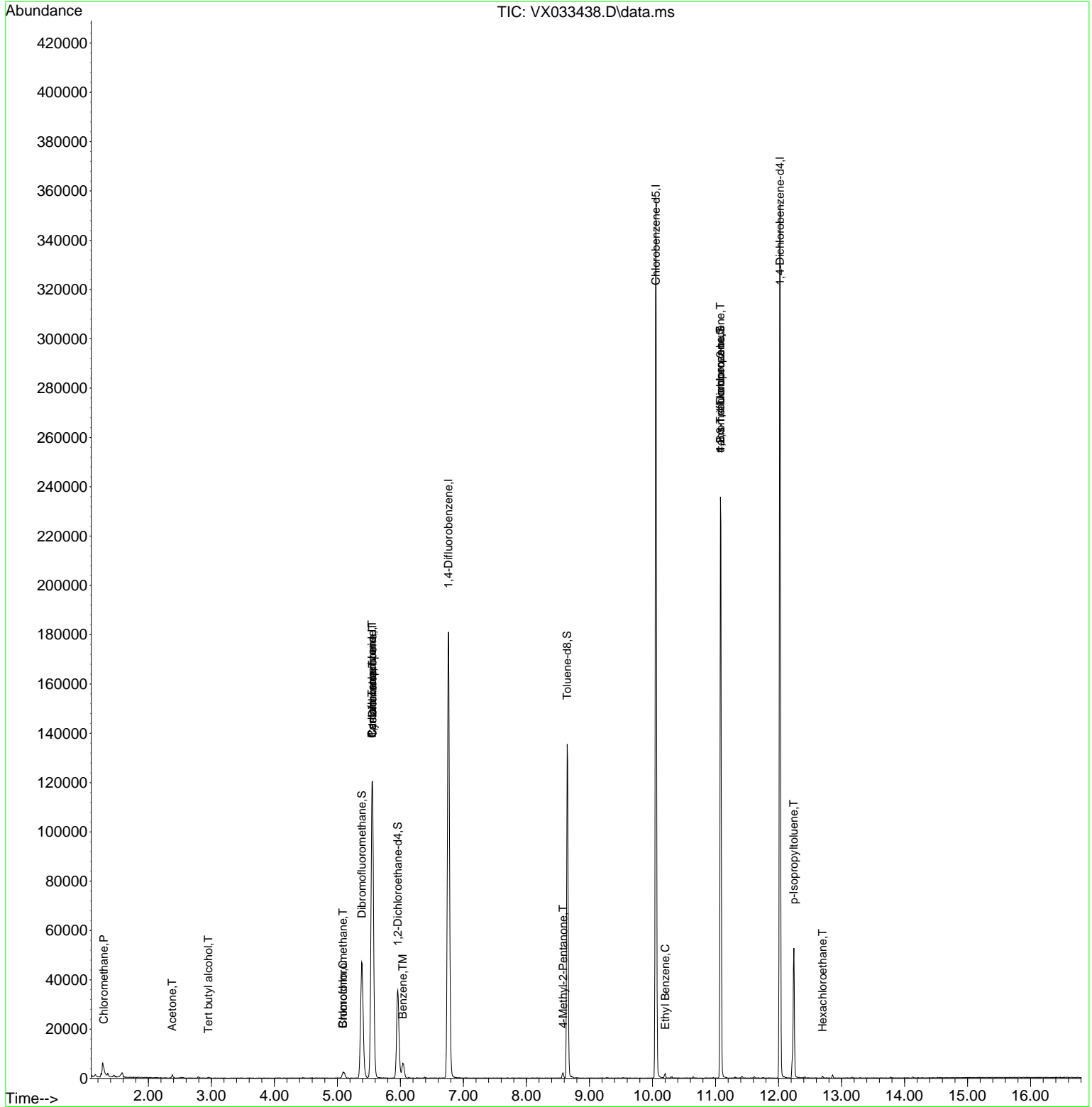
Compound	R.T.	QIon	Response	Conc	Units	Dev(Min)
-----						
Internal Standards						
1) Pentafluorobenzene	5.550	168	117851	50.000	ug/l	0.00
34) 1,4-Difluorobenzene	6.763	114	187379	50.000	ug/l	0.00
63) Chlorobenzene-d5	10.055	117	166169	50.000	ug/l	0.00
72) 1,4-Dichlorobenzene-d4	12.024	152	76359	50.000	ug/l	0.00
System Monitoring Compounds						
33) 1,2-Dichloroethane-d4	5.958	65	37285	49.315	ug/l	0.00
Spiked Amount	50.000	Range 78 - 117	Recovery	=	98.640%	
35) Dibromofluoromethane	5.385	113	41086	48.750	ug/l	0.00
Spiked Amount	50.000	Range 75 - 124	Recovery	=	97.500%	
50) Toluene-d8	8.647	98	83471	47.344	ug/l	0.00
Spiked Amount	50.000	Range 92 - 112	Recovery	=	94.680%	
62) 4-Bromofluorobenzene	11.079	95	62777	46.568	ug/l	0.00
Spiked Amount	50.000	Range 83 - 123	Recovery	=	93.140%	
Target Compounds						
						Qvalue
3) Chloromethane	1.294	50	304	0.319	ug/l #	43
11) Tert butyl alcohol	2.953	59	361	1.562	ug/l #	72
16) Acetone	2.380	43	1295	2.315	ug/l	100
28) Bromochloromethane	5.086	49	204	0.227	ug/l #	9
30) Chloroform	5.086	83	3369	1.413	ug/l	90
31) Cyclohexane	5.556	56	2158	1.201	ug/l #	1
36) 1,1-Dichloropropene	5.556	75	8826	5.371	ug/l #	50
38) Carbon Tetrachloride	5.550	117	12082	6.563	ug/l #	17
40) Benzene	6.037	78	7449	1.555	ug/l	98
51) 4-Methyl-2-Pentanone	8.580	43	1434	0.907	ug/l	93
67) Ethyl Benzene	10.201	91	1522	0.260	ug/l	91
76) 1,2,3-Trichloropropane	11.079	75	33072	21.288	ug/l #	37
81) trans-1,4-Dichloro-2-b...	11.079	75	33072	66.221	ug/l #	6
86) p-Isopropyltoluene	12.244	119	1116	0.241	ug/l #	1
90) Hexachloroethane	12.701	117	530	0.675	ug/l #	12
-----						

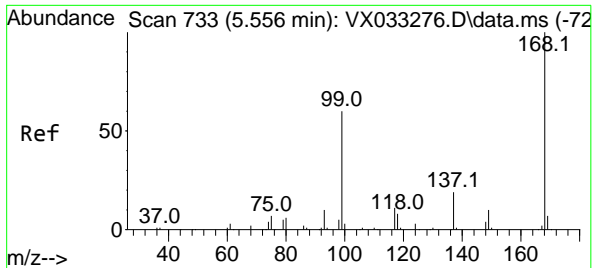
(#) = qualifier out of range (m) = manual integration (+) = signals summed

Data Path : Z:\voasrv\HPCHEM1\MSVOA\_X\Data\VX121522\  
 Data File : VX033438.D  
 Acq On : 15 Dec 2022 13:41  
 Operator : JC/MD  
 Sample : N6070-05  
 Misc : 5.0mL/MSVOA\_X/WATER  
 ALS Vial : 10 Sample Multiplier: 1

Instrument :  
 MSVOA\_X  
 ClientSampleId :  
 OWBR-03-128-148-121422

Quant Time: Dec 16 01:02:02 2022  
 Quant Method : Z:\voasrv\HPCHEM1\MSVOA\_X\Method\82X120722W.M  
 Quant Title : SW846 8260  
 QLast Update : Wed Dec 07 12:43:54 2022  
 Response via : Initial Calibration

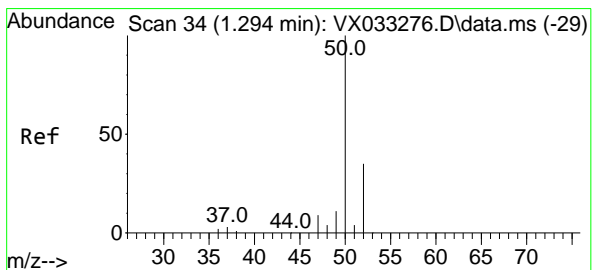
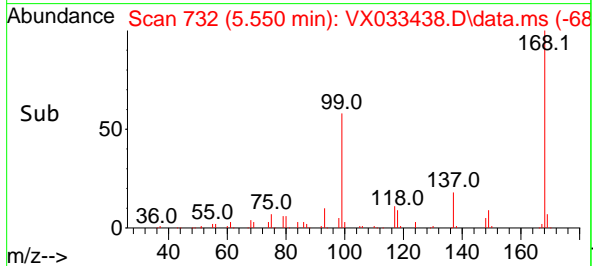
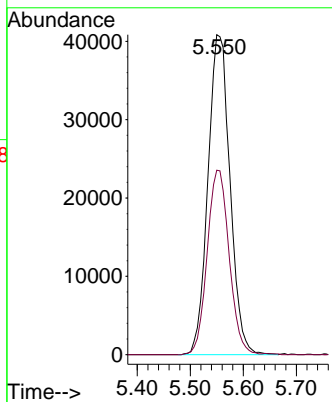
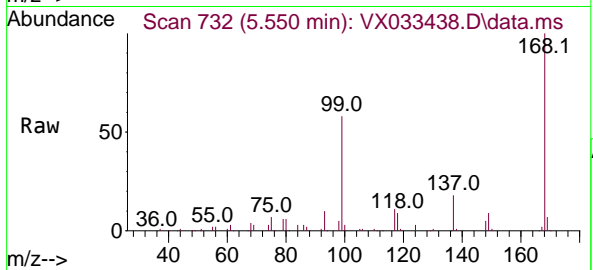




#1  
 Pentafluorobenzene  
 Concen: 50.000 ug/l  
 RT: 5.550 min Scan# 71  
 Delta R.T. -0.006 min  
 Lab File: VX033438.D  
 Acq: 15 Dec 2022 13:41

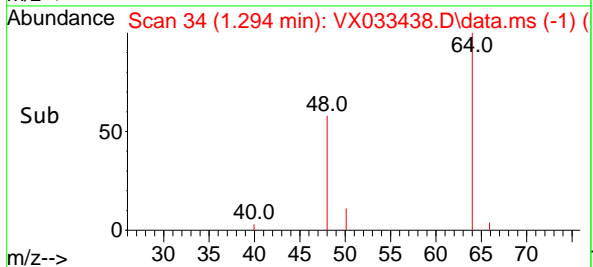
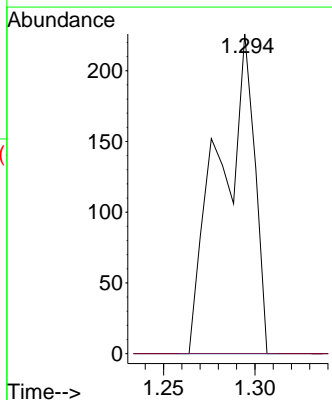
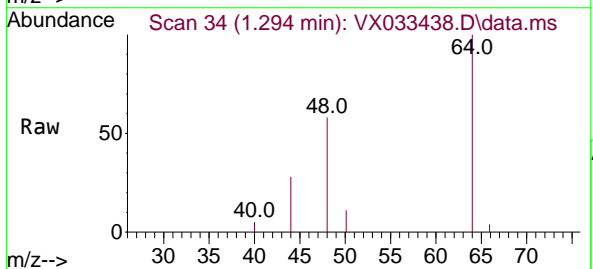
Instrument : MSVOA\_X  
 ClientSampleId : OWBR-03-128-148-121422

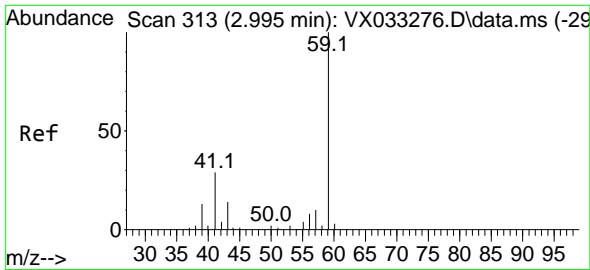
Tgt Ion:168 Resp: 117851  
 Ion Ratio Lower Upper  
 168 100  
 99 57.6 46.1 69.1



#3  
 Chloromethane  
 Concen: 0.319 ug/l  
 RT: 1.294 min Scan# 34  
 Delta R.T. 0.000 min  
 Lab File: VX033438.D  
 Acq: 15 Dec 2022 13:41

Tgt Ion: 50 Resp: 304  
 Ion Ratio Lower Upper  
 50 100  
 52 0.0 25.4 38.2#

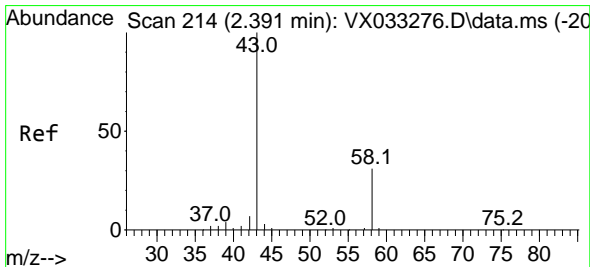
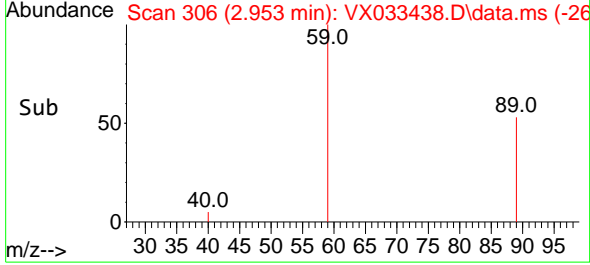
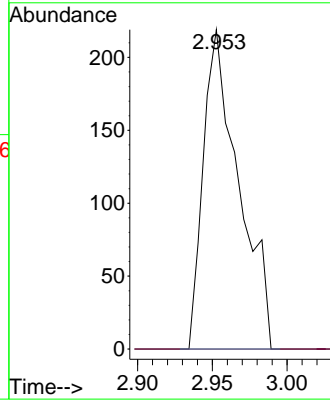
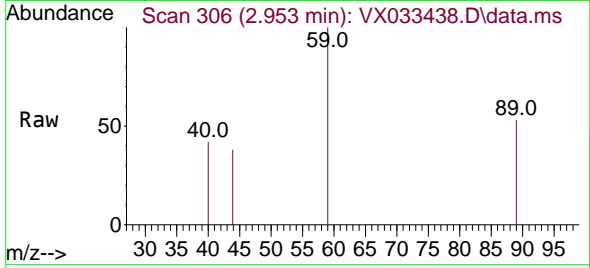




#11  
 Tert butyl alcohol  
 Concen: 1.562 ug/l  
 RT: 2.953 min Scan# 306  
 Delta R.T. -0.042 min  
 Lab File: VX033438.D  
 Acq: 15 Dec 2022 13:41

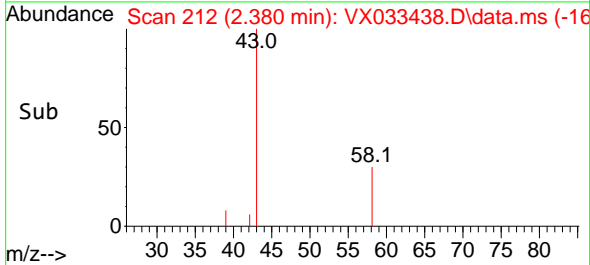
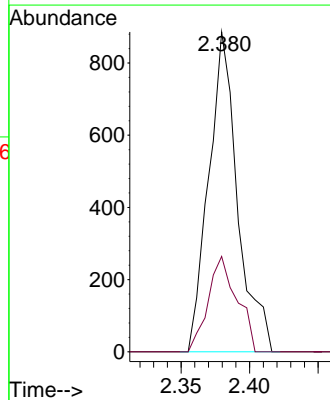
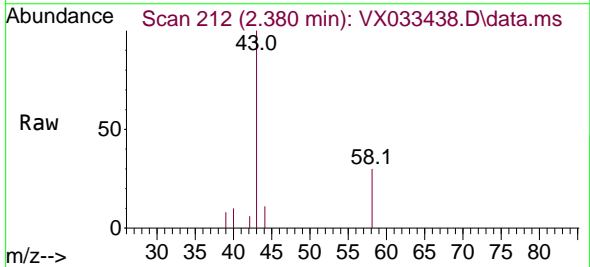
Instrument : MSVOA\_X  
 ClientSampleId : OWBR-03-128-148-121422

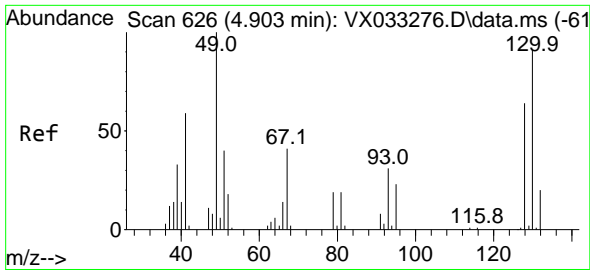
Tgt Ion: 59 Resp: 361  
 Ion Ratio Lower Upper  
 59 100  
 57 0.0 8.2 12.4#



#16  
 Acetone  
 Concen: 2.315 ug/l  
 RT: 2.380 min Scan# 212  
 Delta R.T. -0.012 min  
 Lab File: VX033438.D  
 Acq: 15 Dec 2022 13:41

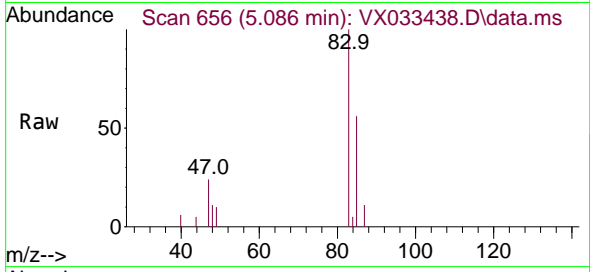
Tgt Ion: 43 Resp: 1295  
 Ion Ratio Lower Upper  
 43 100  
 58 29.8 23.8 35.8



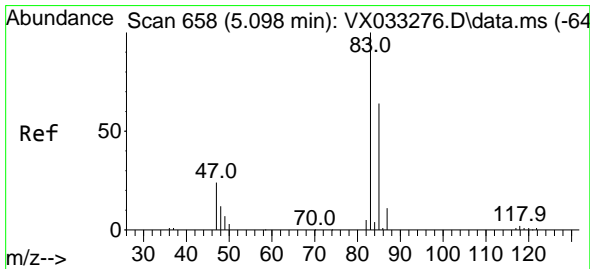
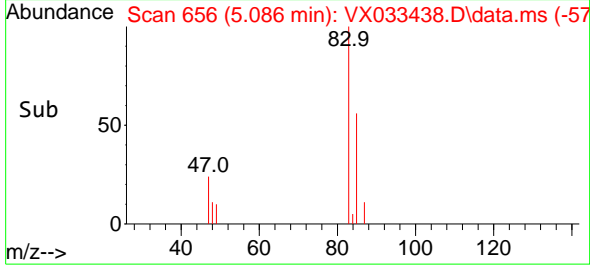
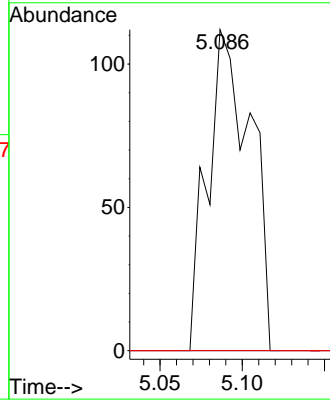


#28  
 Bromochloromethane  
 Concen: 0.227 ug/l  
 RT: 5.086 min Scan# 61  
 Delta R.T. 0.183 min  
 Lab File: VX033438.D  
 Acq: 15 Dec 2022 13:41

Instrument : MSVOA\_X  
 ClientSampleId : OWBR-03-128-148-121422

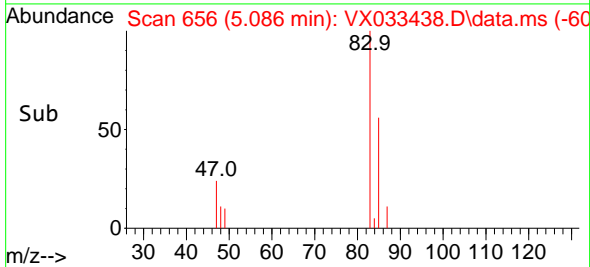
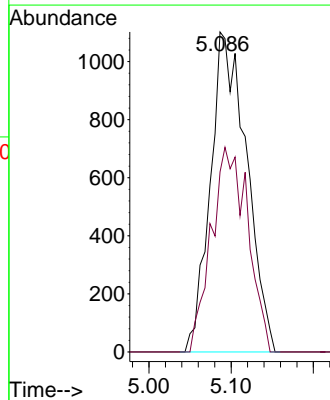
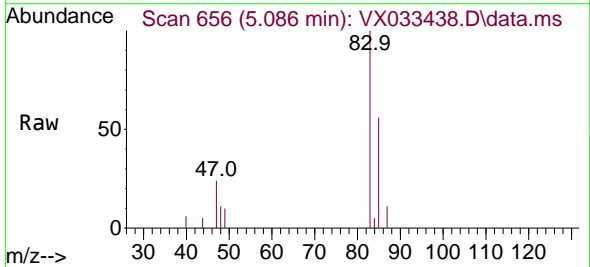


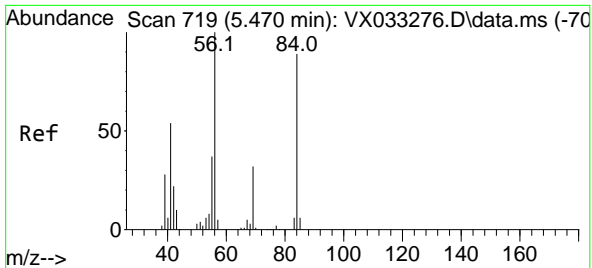
Tgt Ion: 49 Resp: 204  
 Ion Ratio Lower Upper  
 49 100  
 129 0.0 0.0 3.8  
 130 0.0 67.5 101.3#



#30  
 Chloroform  
 Concen: 1.413 ug/l  
 RT: 5.086 min Scan# 656  
 Delta R.T. -0.012 min  
 Lab File: VX033438.D  
 Acq: 15 Dec 2022 13:41

Tgt Ion: 83 Resp: 3369  
 Ion Ratio Lower Upper  
 83 100  
 85 56.3 51.1 76.7

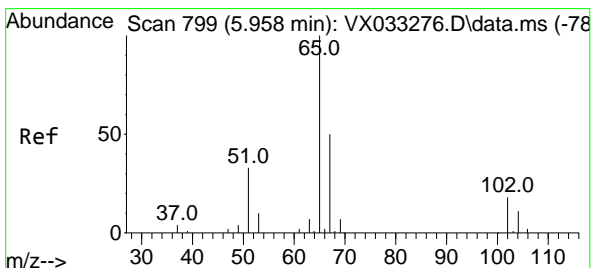
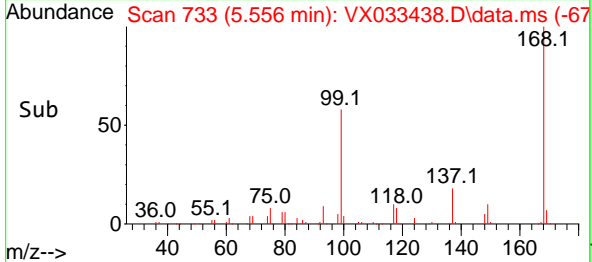
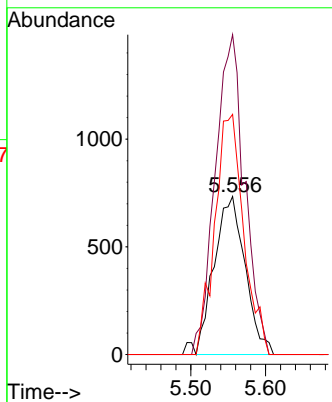
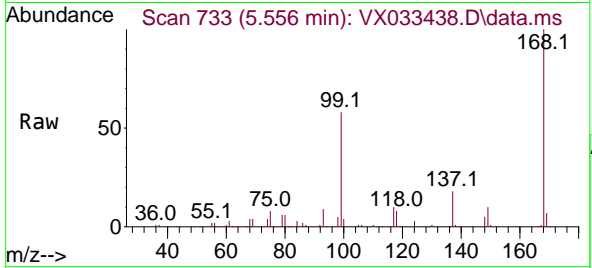




#31  
 Cyclohexane  
 Concen: 1.201 ug/l  
 RT: 5.556 min Scan# 719  
 Delta R.T. 0.086 min  
 Lab File: VX033438.D  
 Acq: 15 Dec 2022 13:41

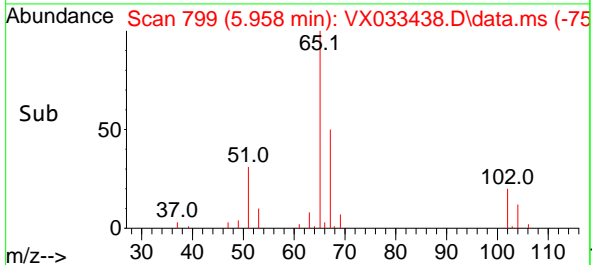
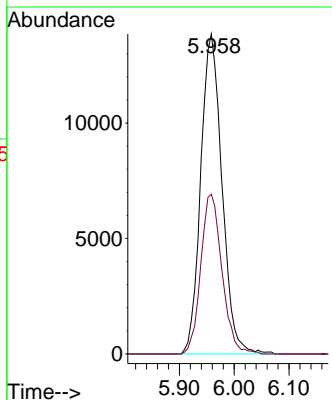
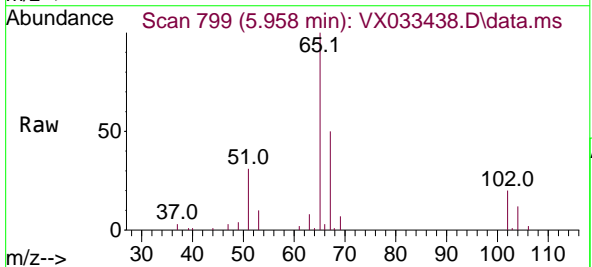
Instrument : MSVOA\_X  
 ClientSampleId : OWBR-03-128-148-121422

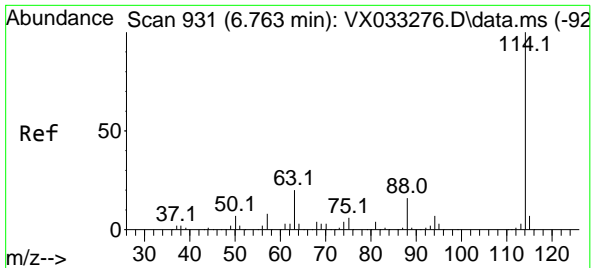
Tgt Ion	Resp	Ion Ratio	Lower	Upper
56	2158	100		
69		202.3	24.1	36.1#
84		151.9	66.9	100.3#



#33  
 1,2-Dichloroethane-d4  
 Concen: 49.315 ug/l  
 RT: 5.958 min Scan# 799  
 Delta R.T. 0.000 min  
 Lab File: VX033438.D  
 Acq: 15 Dec 2022 13:41

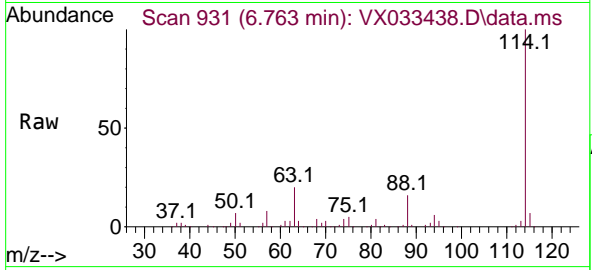
Tgt Ion	Resp	Ion Ratio	Lower	Upper
65	37285	100		
67		49.7	0.0	101.8





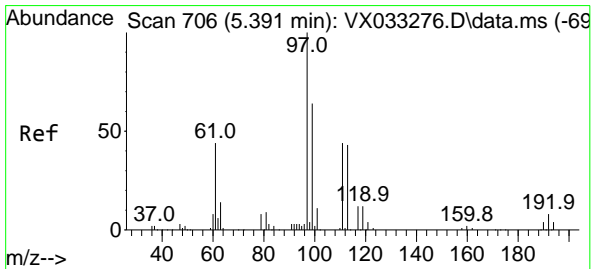
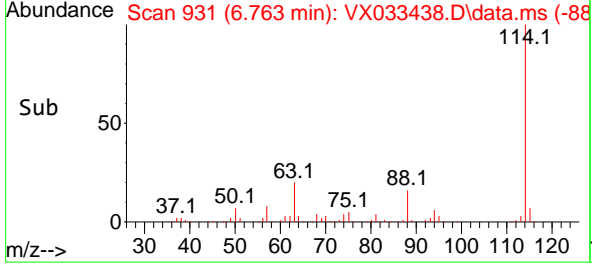
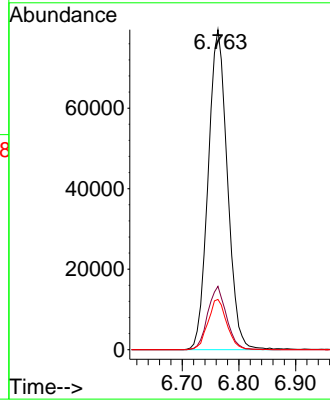
#34  
 1,4-Difluorobenzene  
 Concen: 50.000 ug/l  
 RT: 6.763 min Scan# 91  
 Delta R.T. 0.000 min  
 Lab File: VX033438.D  
 Acq: 15 Dec 2022 13:41

Instrument : MSVOA\_X  
 ClientSampleId : OWBR-03-128-148-121422

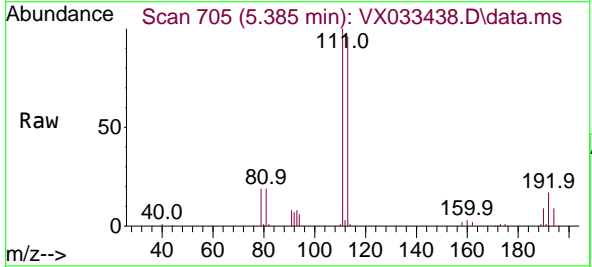


Tgt Ion:114 Resp: 187379

Ion	Ratio	Lower	Upper
114	100		
63	19.8	0.0	41.6
88	15.7	0.0	33.4

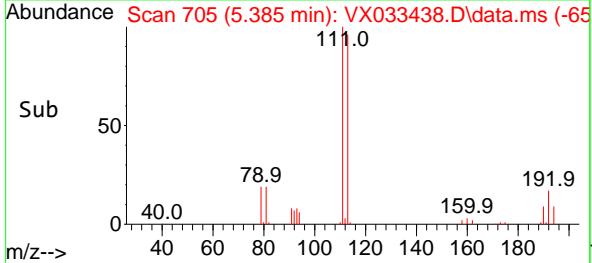
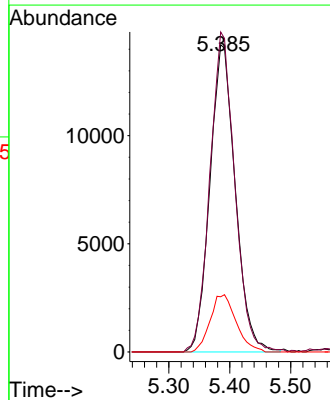


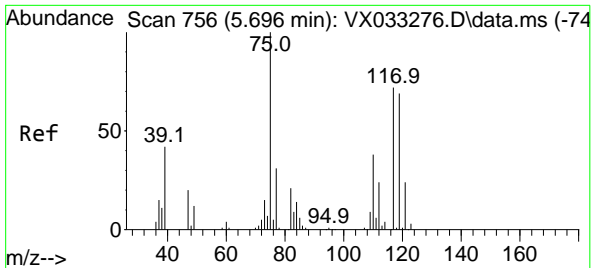
#35  
 Dibromofluoromethane  
 Concen: 48.750 ug/l  
 RT: 5.385 min Scan# 705  
 Delta R.T. -0.006 min  
 Lab File: VX033438.D  
 Acq: 15 Dec 2022 13:41



Tgt Ion:113 Resp: 41086

Ion	Ratio	Lower	Upper
113	100		
111	102.0	82.4	123.6
192	19.1	15.4	23.2

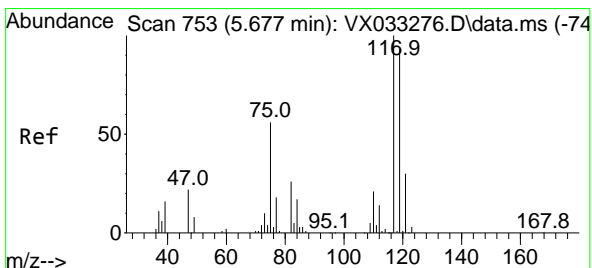
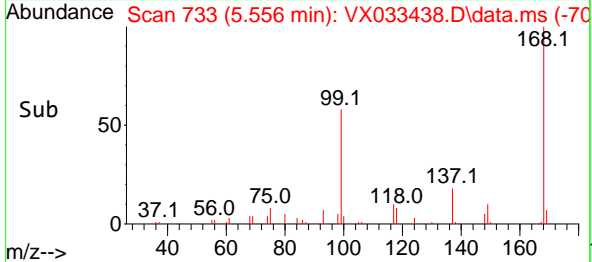
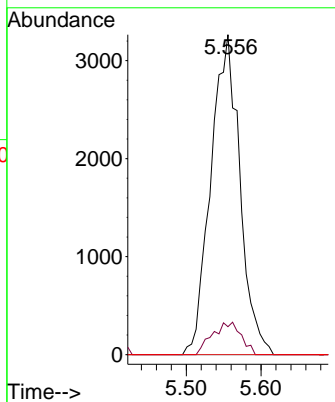
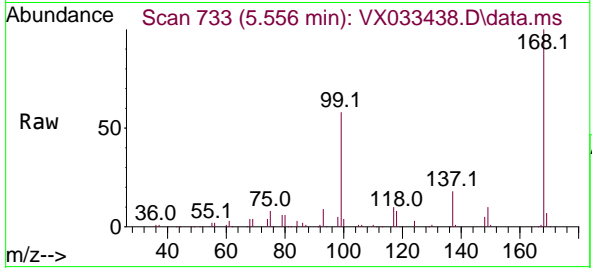




#36  
 1,1-Dichloropropene  
 Concen: 5.371 ug/l  
 RT: 5.556 min Scan# 711  
 Delta R.T. -0.140 min  
 Lab File: VX033438.D  
 Acq: 15 Dec 2022 13:41

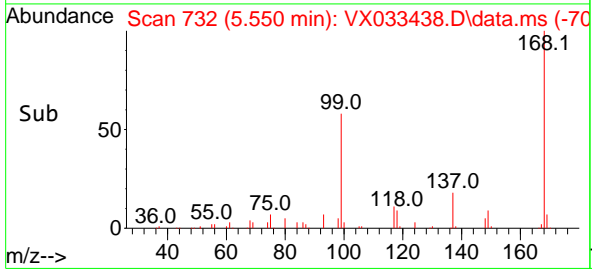
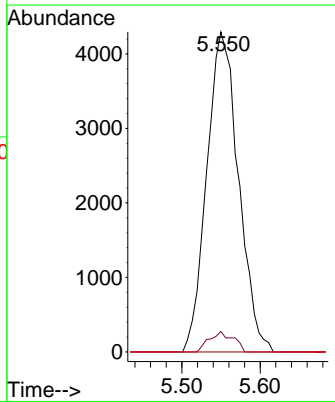
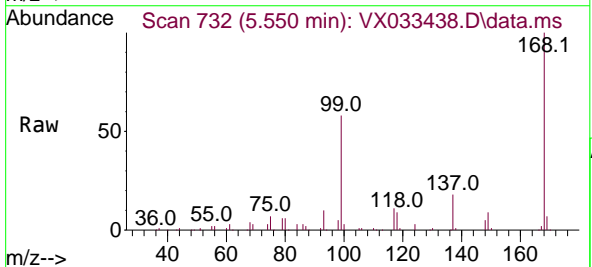
Instrument : MSVOA\_X  
 ClientSampleId : OWBR-03-128-148-121422

Tgt Ion	Resp	Lower	Upper
75	8826		
75	100		
110	10.0	18.4	55.2#
77	0.0	24.5	36.7#

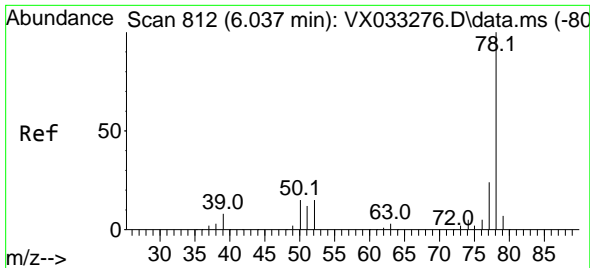


#38  
 Carbon Tetrachloride  
 Concen: 6.563 ug/l  
 RT: 5.550 min Scan# 732  
 Delta R.T. -0.128 min  
 Lab File: VX033438.D  
 Acq: 15 Dec 2022 13:41

Tgt Ion	Resp	Lower	Upper
117	12082		
117	100		
119	6.4	77.2	115.8#
121	0.0	25.8	38.6#

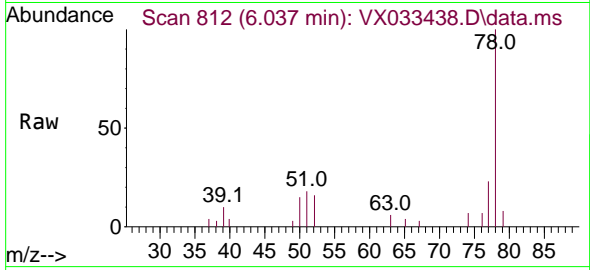




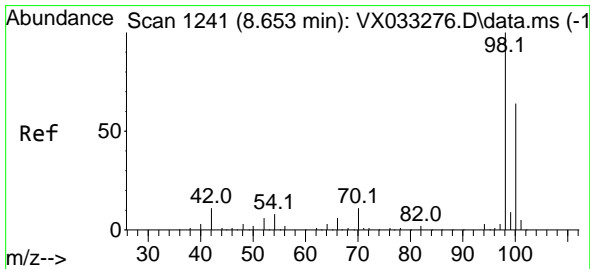
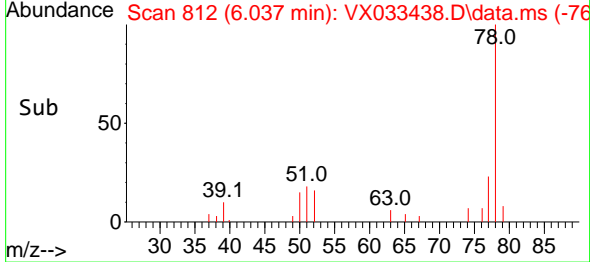
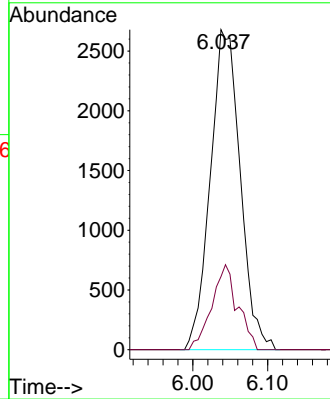


#40  
Benzene  
Concen: 1.555 ug/l  
RT: 6.037 min Scan# 812  
Delta R.T. 0.000 min  
Lab File: VX033438.D  
Acq: 15 Dec 2022 13:41

Instrument : MSVOA\_X  
ClientSampleId : OWBR-03-128-148-121422

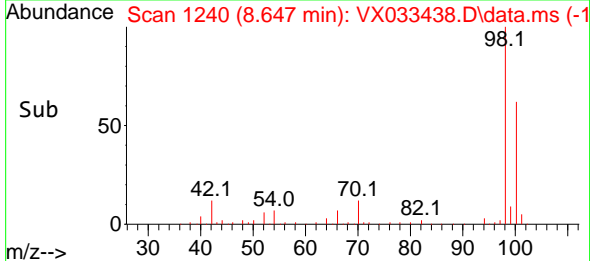
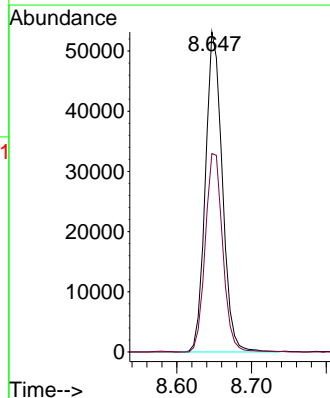
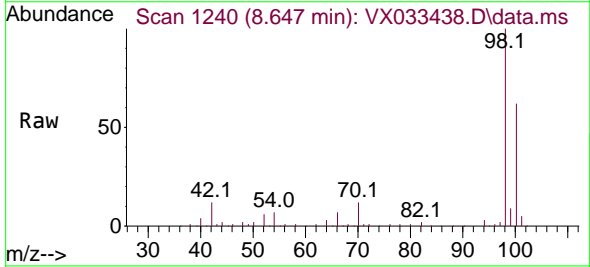


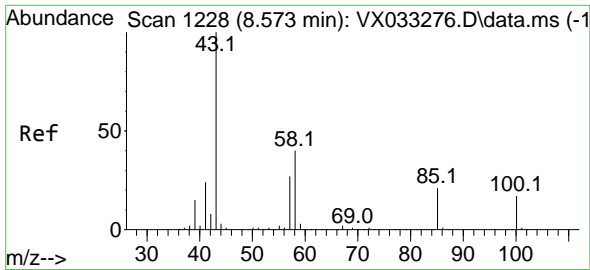
Tgt Ion: 78 Resp: 7449  
Ion Ratio Lower Upper  
78 100  
77 22.9 19.0 28.4



#50  
Toluene-d8  
Concen: 47.344 ug/l  
RT: 8.647 min Scan# 1240  
Delta R.T. -0.006 min  
Lab File: VX033438.D  
Acq: 15 Dec 2022 13:41

Tgt Ion: 98 Resp: 83471  
Ion Ratio Lower Upper  
98 100  
100 64.1 50.9 76.3

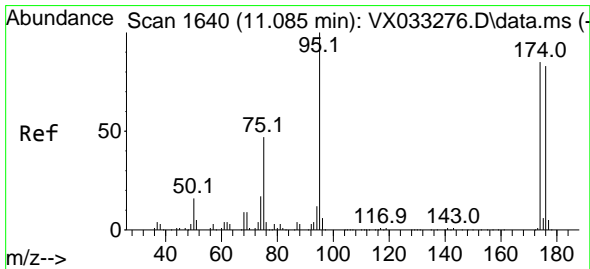
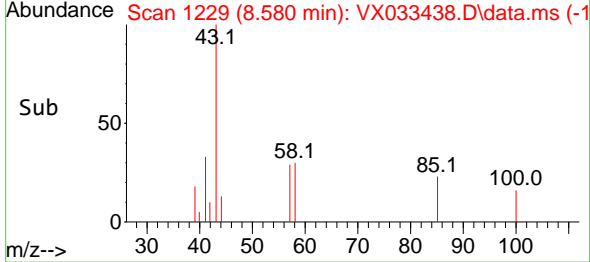
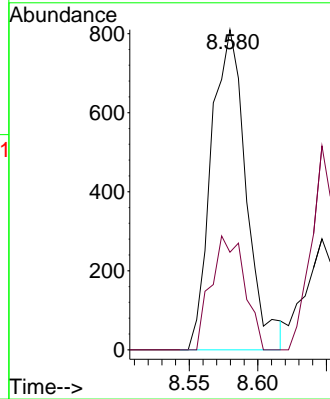
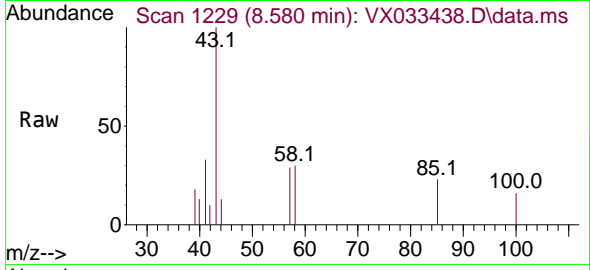




#51  
 4-Methyl-2-Pentanone  
 Concen: 0.907 ug/l  
 RT: 8.580 min Scan# 1111  
 Delta R.T. 0.006 min  
 Lab File: VX033438.D  
 Acq: 15 Dec 2022 13:41

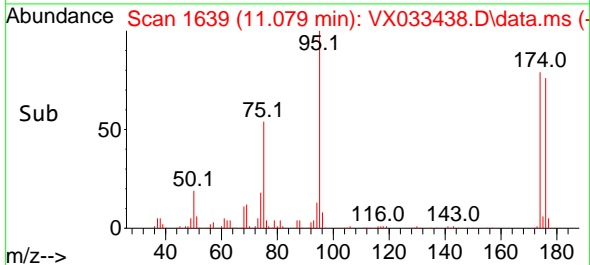
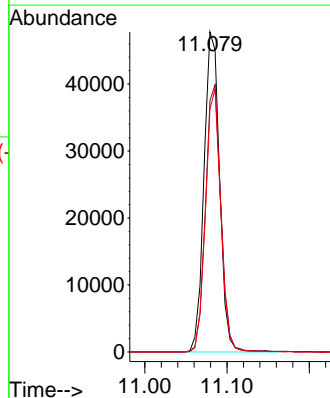
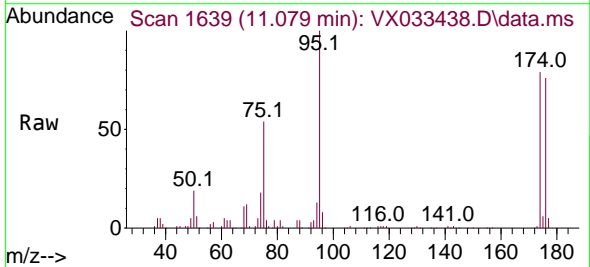
Instrument : MSVOA\_X  
 ClientSampleId : OWBR-03-128-148-121422

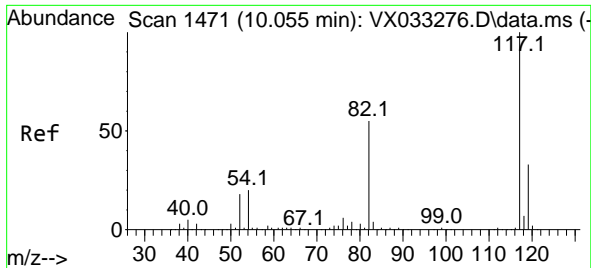
Tgt Ion: 43 Resp: 1434  
 Ion Ratio Lower Upper  
 43 100  
 58 34.2 30.9 46.3



#62  
 4-Bromofluorobenzene  
 Concen: 46.568 ug/l  
 RT: 11.079 min Scan# 1639  
 Delta R.T. -0.006 min  
 Lab File: VX033438.D  
 Acq: 15 Dec 2022 13:41

Tgt Ion: 95 Resp: 62777  
 Ion Ratio Lower Upper  
 95 100  
 174 83.2 0.0 164.0  
 176 80.4 0.0 154.4

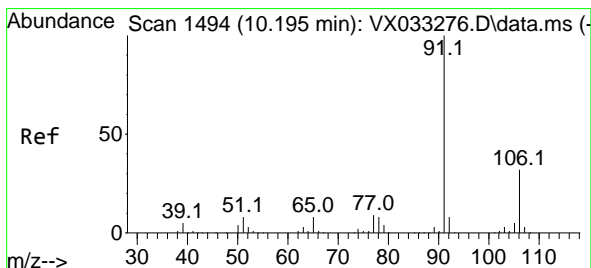
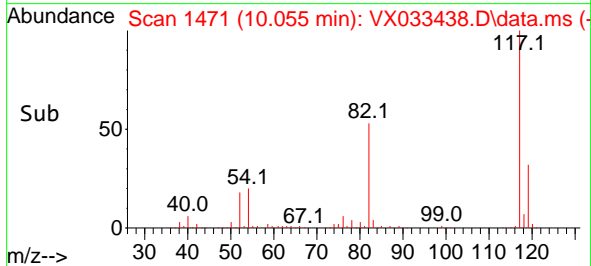
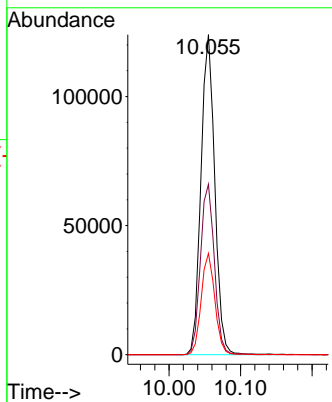
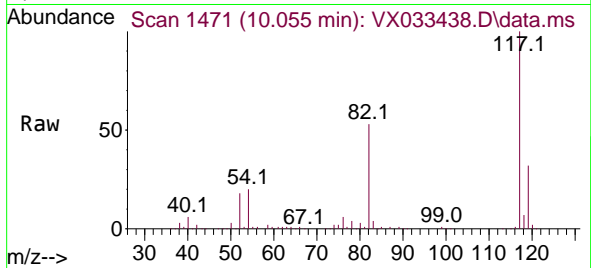




#63  
 Chlorobenzene-d5  
 Concen: 50.000 ug/l  
 RT: 10.055 min Scan# 14  
 Delta R.T. 0.000 min  
 Lab File: VX033438.D  
 Acq: 15 Dec 2022 13:41

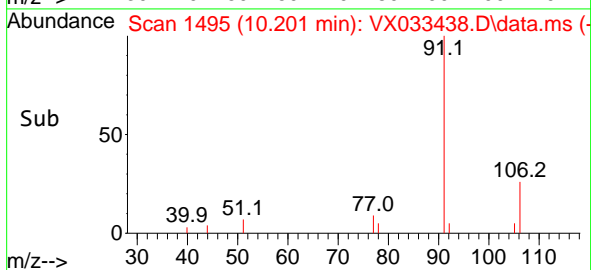
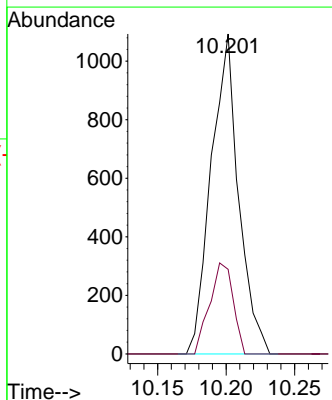
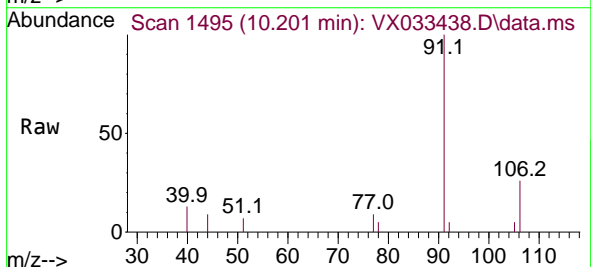
Instrument : MSVOA\_X  
 ClientSampleId : OWBR-03-128-148-121422

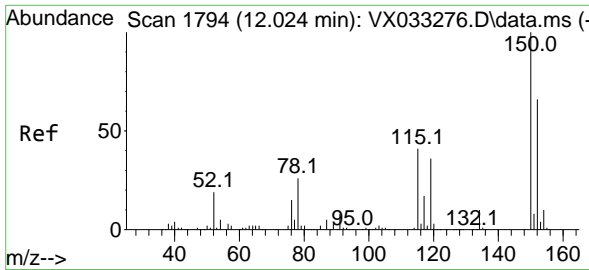
Tgt Ion	Resp	Lower	Upper
117	166169		
117	100		
82	53.3	44.3	66.5
119	31.6	25.7	38.5



#67  
 Ethyl Benzene  
 Concen: 0.260 ug/l  
 RT: 10.201 min Scan# 1495  
 Delta R.T. 0.006 min  
 Lab File: VX033438.D  
 Acq: 15 Dec 2022 13:41

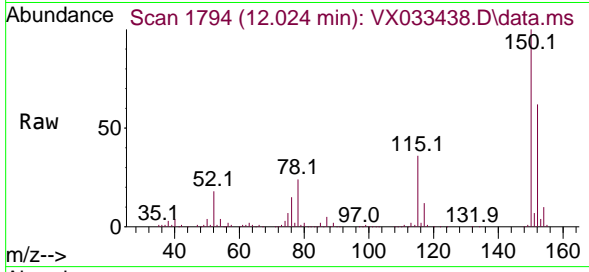
Tgt Ion	Resp	Lower	Upper
91	1522		
91	100		
106	26.4	25.0	37.6



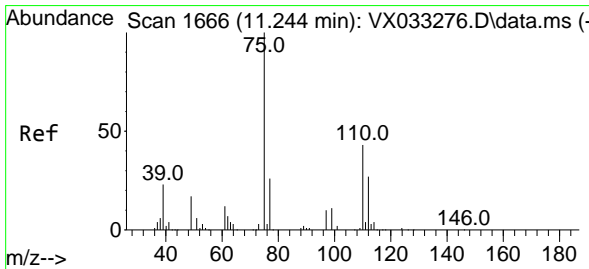
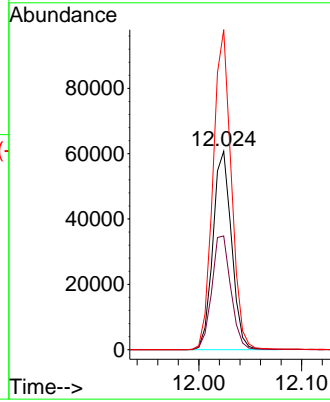
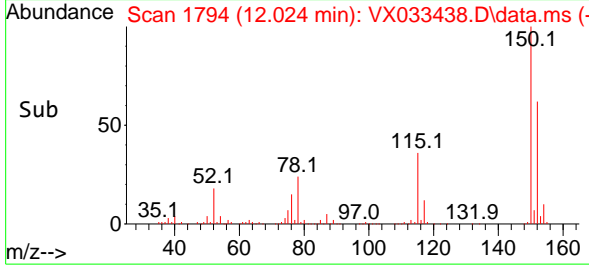


#72  
 1,4-Dichlorobenzene-d4  
 Concen: 50.000 ug/l  
 RT: 12.024 min Scan# 1  
 Delta R.T. 0.000 min  
 Lab File: VX033438.D  
 Acq: 15 Dec 2022 13:41

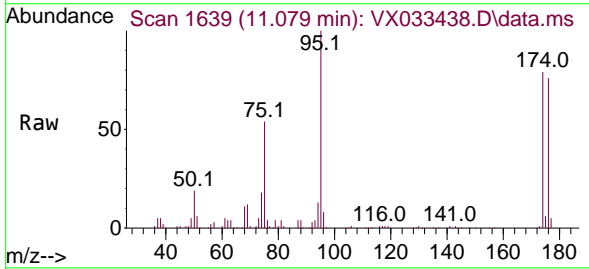
Instrument : MSVOA\_X  
 ClientSampleId : OWBR-03-128-148-121422



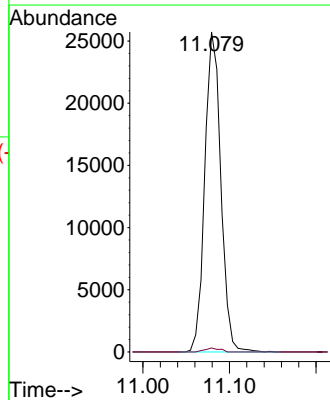
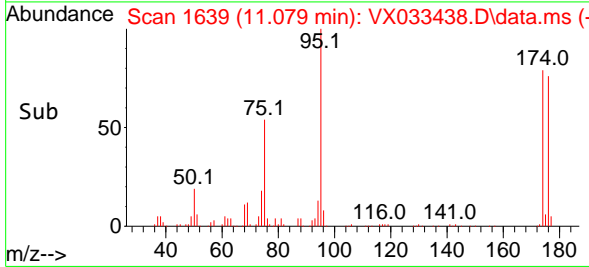
Tgt Ion:152 Resp: 76359  
 Ion Ratio Lower Upper  
 152 100  
 115 59.1 44.0 132.0  
 150 158.8 0.0 351.8

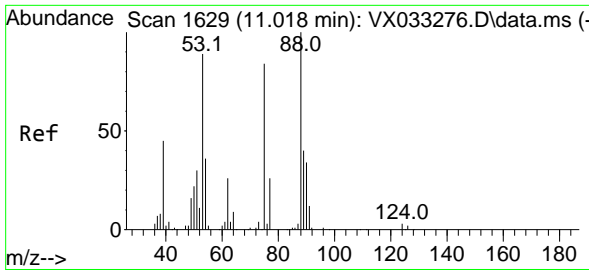


#76  
 1,2,3-Trichloropropane  
 Concen: 21.288 ug/l  
 RT: 11.079 min Scan# 1639  
 Delta R.T. -0.164 min  
 Lab File: VX033438.D  
 Acq: 15 Dec 2022 13:41



Tgt Ion: 75 Resp: 33072  
 Ion Ratio Lower Upper  
 75 100  
 77 1.2 20.0 60.0#



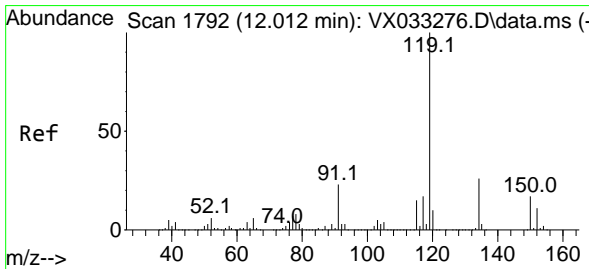
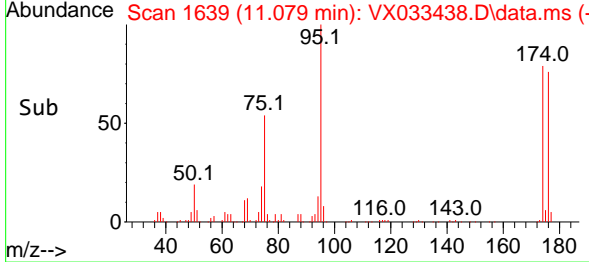
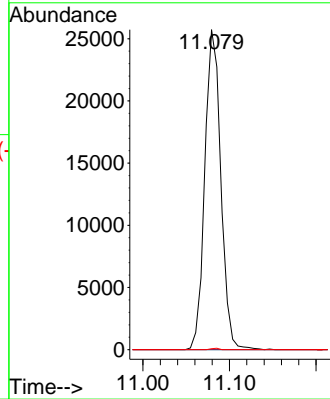
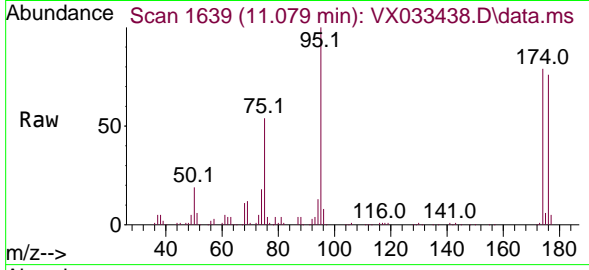


#81  
 trans-1,4-Dichloro-2-butene  
 Concen: 66.221 ug/l  
 RT: 11.079 min Scan# 1100  
 Delta R.T. 0.061 min  
 Lab File: VX033438.D  
 Acq: 15 Dec 2022 13:41

Instrument : MSVOA\_X  
 ClientSampleId : OWBR-03-128-148-121422

Tgt Ion: 75 Resp: 33072

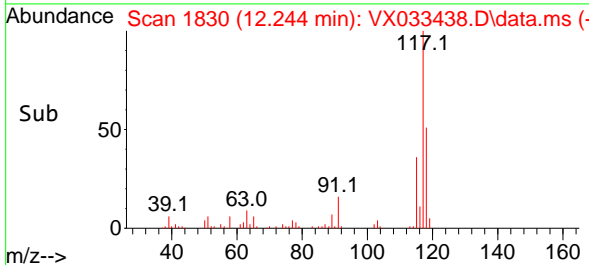
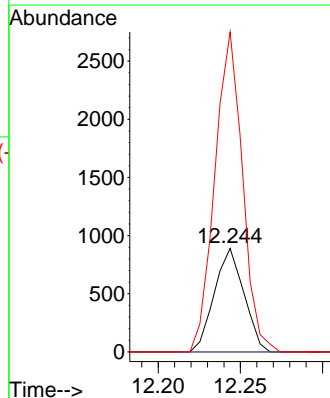
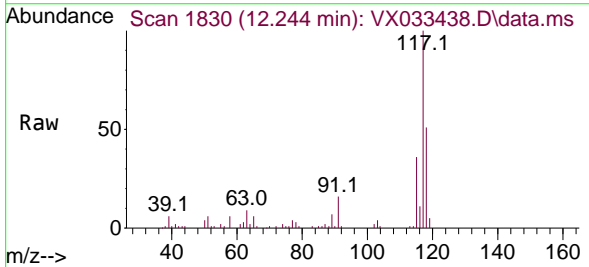
Ion	Ratio	Lower	Upper
75	100		
53	0.0	86.9	130.3#
89	0.2	38.3	57.5#

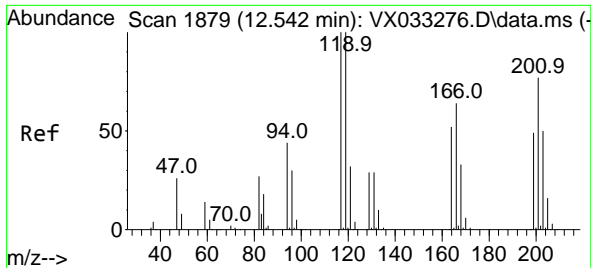


#86  
 p-Isopropyltoluene  
 Concen: 0.241 ug/l  
 RT: 12.244 min Scan# 1830  
 Delta R.T. 0.232 min  
 Lab File: VX033438.D  
 Acq: 15 Dec 2022 13:41

Tgt Ion: 119 Resp: 1116

Ion	Ratio	Lower	Upper
119	100		
134	0.0	12.9	38.7#
91	288.0	12.5	37.5#





#90  
 Hexachloroethane  
 Concen: 0.675 ug/l  
 RT: 12.701 min Scan# 1905  
 Delta R.T. 0.159 min  
 Lab File: VX033438.D  
 Acq: 15 Dec 2022 13:41

Instrument : MSVOA\_X  
 ClientSampleId : OWBR-03-128-148-121422

Tgt Ion:117 Resp: 530  
 Ion Ratio Lower Upper  
 117 100  
 201 0.0 37.6 112.9#

