

Data Path : Z:\voasrv\HPCHEM1\MSVOA\_X\Data\VX121525\  
 Data File : VX048867.D  
 Acq On : 15 Dec 2025 09:42  
 Operator : JC/MD  
 Sample : VX1215MBL01  
 Misc : 5.00g/10mL/100uL/5.0mL/MSVOA\_X/MEOH  
 ALS Vial : 3 Sample Multiplier: 1

Instrument :  
 MSVOA\_X  
 ClientSampleId :  
 VX1215MBL01

Integration Parameters: RTEINT.P

Integrator: RTE  
 Smoothing : ON Filtering: 5  
 Sampling : 1 Min Area: 3 % of largest Peak  
 Start Thrs: 0.2 Max Peaks: 100  
 Stop Thrs : 0 Peak Location: TOP

If leading or trailing edge < 100 prefer < Baseline drop else tangent >  
 Peak separation: 5

Method : Z:\voasrv\HPCHEM1\MSVOA\_X\Method\82X120425W.M  
 Title : SW846 8260

Signal : TIC: VX048867.D\data.ms

peak #	R.T. min	first scan	max scan	last scan	PK TY	peak height	corr. area	corr. % max.	% of total
1	5.361	690	701	716	rBV3	99442	329749	34.08%	6.581%
2	5.525	718	728	749	rVB2	181559	556828	57.56%	11.112%
3	5.928	784	794	816	rBV2	106597	323943	33.48%	6.465%
4	6.732	916	926	946	rBV	276203	719641	74.38%	14.361%
5	8.628	1229	1237	1254	rBV	590848	967469	100.00%	19.307%
6	10.031	1462	1467	1484	rBV	534694	818779	84.63%	16.340%
7	11.061	1631	1636	1651	rVB	411441	558726	57.75%	11.150%
8	12.000	1785	1790	1802	rBV	560810	735842	76.06%	14.685%

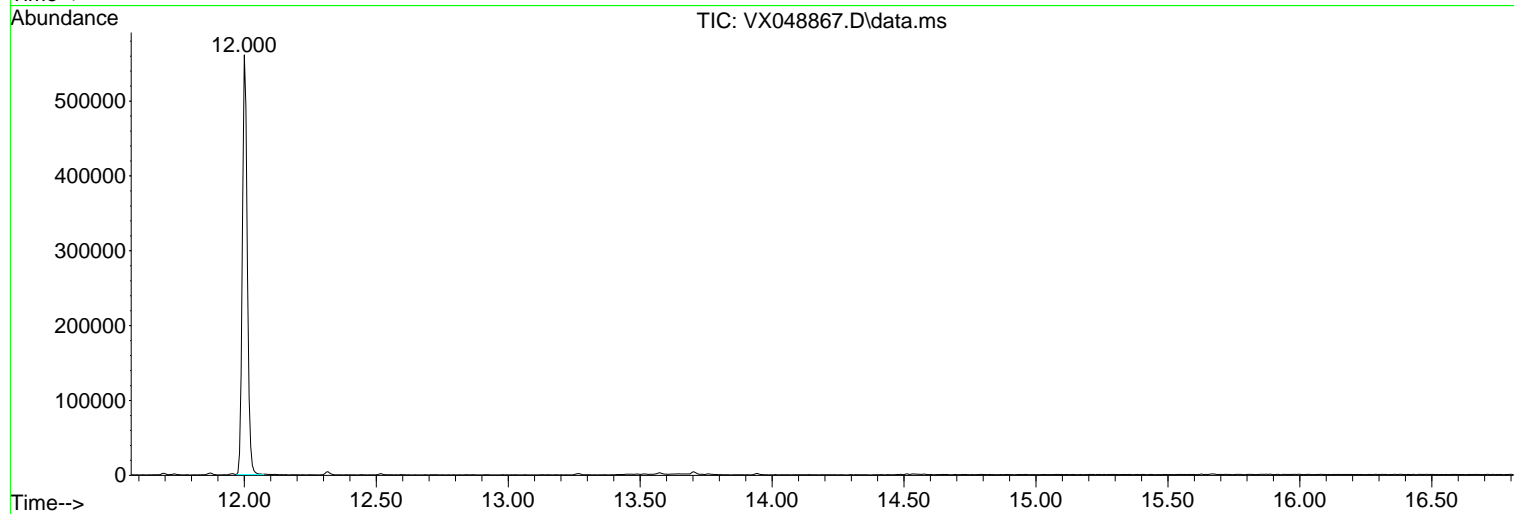
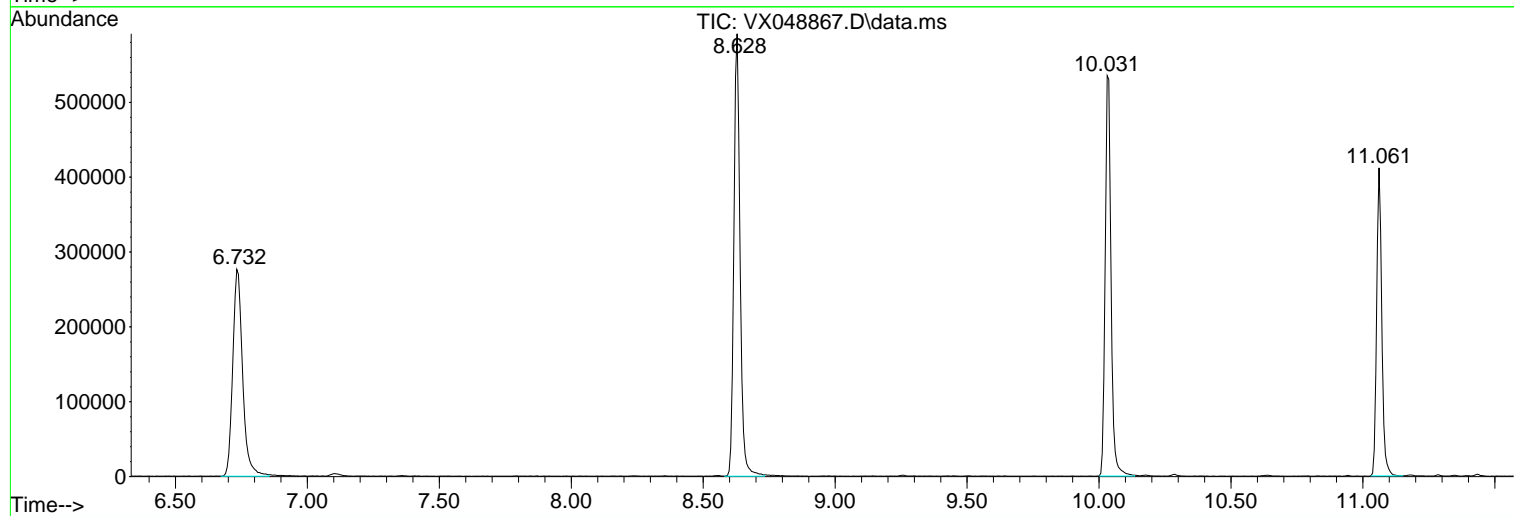
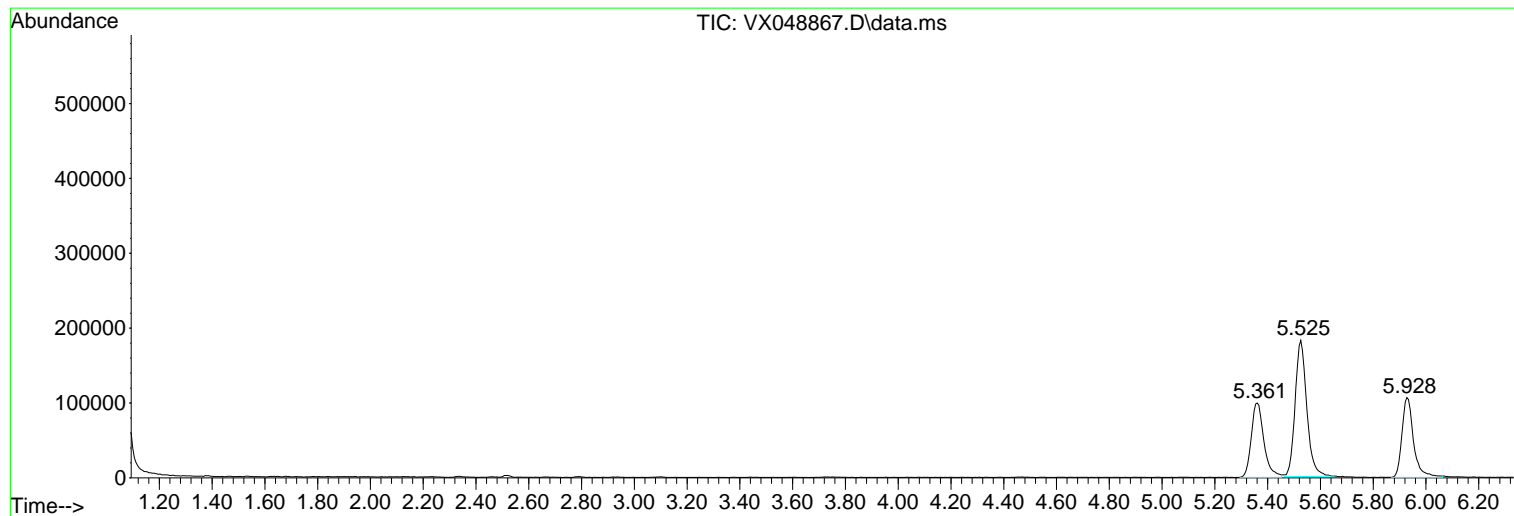
Sum of corrected areas: 5010977

Data Path : Z:\voasrv\HPCHEM1\MSVOA\_X\Data\VX121525\  
Data File : VX048867.D  
Acq On : 15 Dec 2025 09:42  
Operator : JC/MD  
Sample : VX1215MBL01  
Misc : 5.00g/10mL/100uL/5.0mL/MSVOA\_X/MEOH  
ALS Vial : 3 Sample Multiplier: 1

Instrument :  
MSVOA\_X  
ClientSampleId :  
VX1215MBL01

Quant Method : Z:\voasrv\HPCHEM1\MSVOA\_X\Method\82X120425W.M  
Quant Title : SW846 8260

TIC Library : C:\Database\NIST20.L  
TIC Integration Parameters: LSCINT.P



Data Path : Z:\voasrv\HPCHEM1\MSVOA\_X\Data\VX121525\  
Data File : VX048867.D  
Acq On : 15 Dec 2025 09:42  
Operator : JC/MD  
Sample : VX1215MBL01  
Misc : 5.00g/10mL/100uL/5.0mL/MSVOA\_X/MEOH  
ALS Vial : 3 Sample Multiplier: 1

**Instrument :**  
MSVOA\_X  
**ClientSampleId :**  
VX1215MBL01

Quant Method : Z:\voasrv\HPCHEM1\MSVOA\_X\Method\82X120425W.M  
Quant Title : SW846 8260

TIC Library : C:\Database\NIST20.L  
TIC Integration Parameters: LSCINT.P

No Library Search Compounds Detected

\*\*\*\*\*

Data Path : Z:\voasrv\HPCHEM1\MSVOA\_X\Data\VX121525\  
Data File : VX048867.D  
Acq On : 15 Dec 2025 09:42  
Operator : JC/MD  
Sample : VX1215MBL01  
Misc : 5.00g/10mL/100uL/5.0mL/MSVOA\_X/MEOH  
ALS Vial : 3 Sample Multiplier: 1

Instrument :  
MSVOA\_X  
ClientSampleId :  
VX1215MBL01

Quant Method : Z:\voasrv\HPCHEM1\MSVOA\_X\Method\82X120425W.M  
Quant Title : SW846 8260

TIC Library : C:\Database\NIST20.L  
TIC Integration Parameters: LSCINT.P

TIC Top Hit name	RT	EstConc	Units	Response	--Internal Standard--		
					#	RT	Resp Conc

---