

Data Path : Z:\voasrv\HPCHEM1\MSVOA_X\Data\VX121525\
 Data File : VX048868.D
 Acq On : 15 Dec 2025 10:03
 Operator : JC/MD
 Sample : VX1215WBL01
 Misc : 5.0mL/MSVOA_X/WATER
 ALS Vial : 4 Sample Multiplier: 1

Instrument :
 MSVOA_X
 ClientSampleId :
 VX1215WBL01

Integration Parameters: RTEINT.P

Integrator: RTE
 Smoothing : ON Filtering: 5
 Sampling : 1 Min Area: 3 % of largest Peak
 Start Thrs: 0.2 Max Peaks: 100
 Stop Thrs : 0 Peak Location: TOP

If leading or trailing edge < 100 prefer < Baseline drop else tangent >
 Peak separation: 5

Method : Z:\voasrv\HPCHEM1\MSVOA_X\Method\82X120425W.M
 Title : SW846 8260

Signal : TIC: VX048868.D\data.ms

peak #	R.T. min	first scan	max scan	last scan	PK TY	peak height	corr. area	corr. % max.	% of total
1	5.367	689	702	719	rBV2	141811	462780	33.72%	6.533%
2	5.538	719	730	753	rVB	252143	788331	57.45%	11.130%
3	5.940	786	796	816	rBV	154364	451385	32.89%	6.373%
4	6.745	917	928	950	rBV	386653	1015026	73.97%	14.330%
5	8.628	1230	1237	1257	rBV	806758	1372292	100.00%	19.374%
6	10.037	1462	1468	1485	rBV	806035	1163395	84.78%	16.425%
7	11.061	1631	1636	1650	rBV	584533	808431	58.91%	11.413%
8	12.000	1785	1790	1807	rBV	753069	1021547	74.44%	14.422%

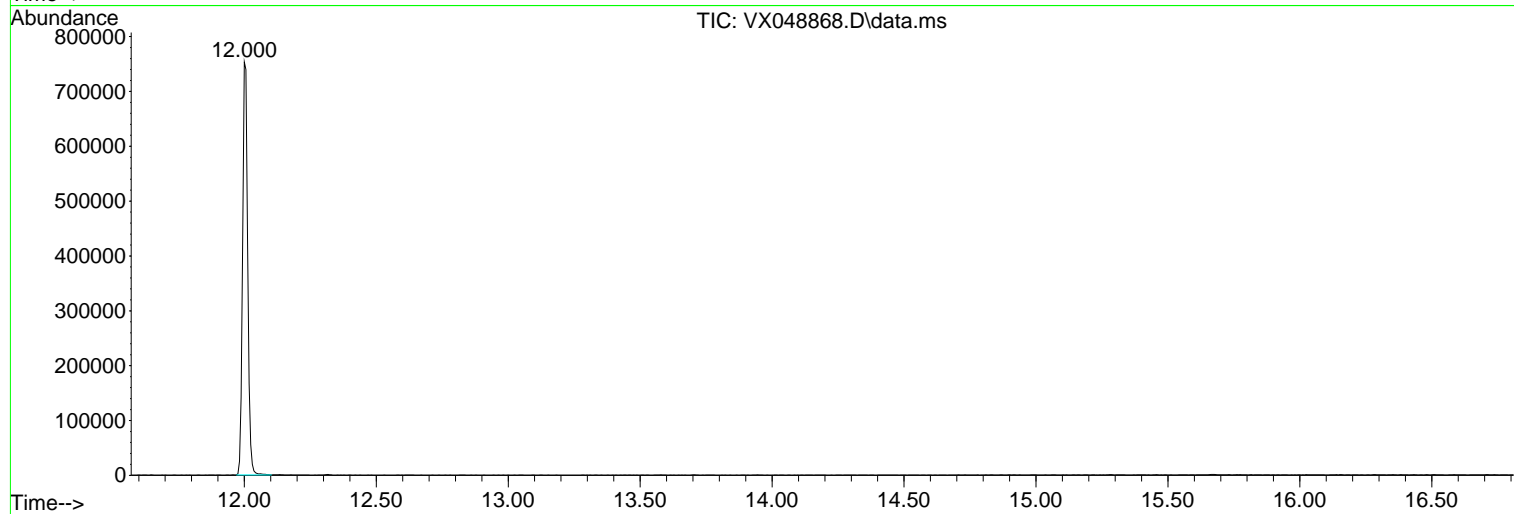
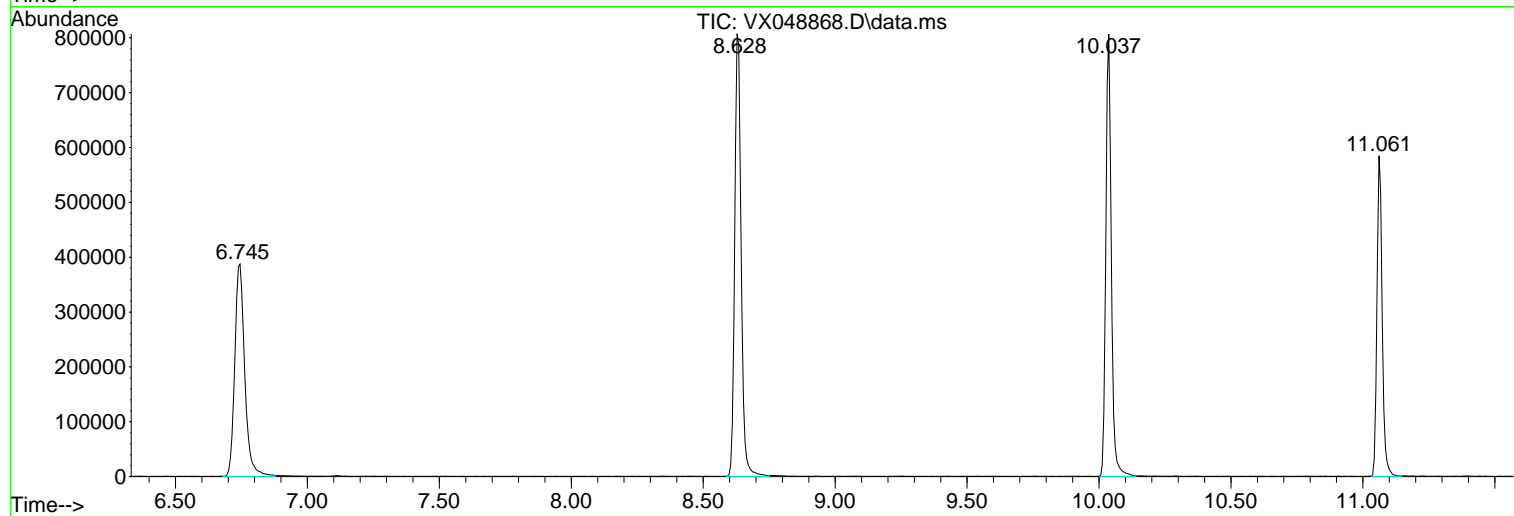
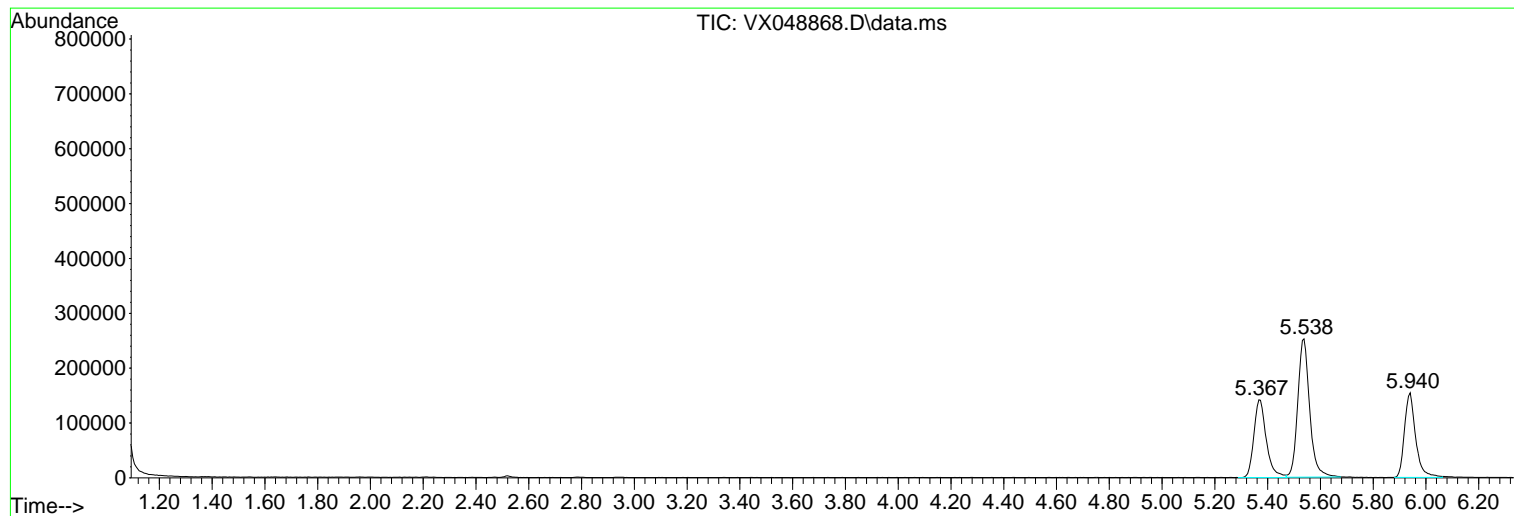
Sum of corrected areas: 7083187

Data Path : Z:\voasrv\HPCHEM1\MSVOA_X\Data\VX121525\
Data File : VX048868.D
Acq On : 15 Dec 2025 10:03
Operator : JC/MD
Sample : VX1215WBL01
Misc : 5.0mL/MSVOA_X/WATER
ALS Vial : 4 Sample Multiplier: 1

Instrument :
MSVOA_X
ClientSampleId :
VX1215WBL01

Quant Method : Z:\voasrv\HPCHEM1\MSVOA_X\Method\82X120425W.M
Quant Title : SW846 8260

TIC Library : C:\Database\NIST20.L
TIC Integration Parameters: LSCINT.P



Library Search Compound Report

Data Path : Z:\voasrv\HPCHEM1\MSVOA_X\Data\VX121525\
Data File : VX048868.D
Acq On : 15 Dec 2025 10:03
Operator : JC/MD
Sample : VX1215WBL01
Misc : 5.0mL/MSVOA_X/WATER
ALS Vial : 4 Sample Multiplier: 1

Instrument :
MSVOA_X
ClientSampleId :
VX1215WBL01

Quant Method : Z:\voasrv\HPCHEM1\MSVOA_X\Method\82X120425W.M
Quant Title : SW846 8260

TIC Library : C:\Database\NIST20.L
TIC Integration Parameters: LSCINT.P

No Library Search Compounds Detected

Data Path : Z:\voasrv\HPCHEM1\MSVOA_X\Data\VX121525\
Data File : VX048868.D
Acq On : 15 Dec 2025 10:03
Operator : JC/MD
Sample : VX1215WBL01
Misc : 5.0mL/MSVOA_X/WATER
ALS Vial : 4 Sample Multiplier: 1

Instrument :
MSVOA_X
ClientSampleId :
VX1215WBL01

Quant Method : Z:\voasrv\HPCHEM1\MSVOA_X\Method\82X120425W.M
Quant Title : SW846 8260

TIC Library : C:\Database\NIST20.L
TIC Integration Parameters: LSCINT.P

TIC Top Hit name	RT	EstConc	Units	Response	--Internal Standard--		
					#	RT	Resp Conc
