

Data Path : Z:\voasrv\HPCHEM1\MSVOA_X\Data\VX121525\
 Data File : VX048872.D
 Acq On : 15 Dec 2025 12:10
 Operator : JC/MD
 Sample : Q3835-02
 Misc : 5.0mL/MSVOA_X/WATER
 ALS Vial : 8 Sample Multiplier: 1

Instrument :
 MSVOA_X
 ClientSampleId :
 OWBR-01-170-121025

Integration Parameters: RTEINT.P

Integrator: RTE
 Smoothing : ON Filtering: 5
 Sampling : 1 Min Area: 3 % of largest Peak
 Start Thrs: 0.2 Max Peaks: 100
 Stop Thrs : 0 Peak Location: TOP

If leading or trailing edge < 100 prefer < Baseline drop else tangent >
 Peak separation: 5

Method : Z:\voasrv\HPCHEM1\MSVOA_X\Method\82X120425W.M
 Title : SW846 8260

Signal : TIC: VX048872.D\data.ms

peak #	R.T. min	first scan	max scan	last scan	PK TY	peak height	corr. area	corr. % max.	% of total
1	2.514	229	234	243	rBV2	5842	12109	1.13%	0.213%
2	4.532	552	565	574	rBV3	5137	20692	1.93%	0.365%
3	5.373	692	703	719	rBV	110315	363922	34.03%	6.416%
4	5.538	720	730	756	rVB2	193791	603955	56.47%	10.648%
5	5.940	784	796	820	rBV	117877	359710	33.63%	6.342%
6	6.745	918	928	952	rBV	300356	787201	73.60%	13.879%
7	7.110	981	988	999	rBV3	8676	20044	1.87%	0.353%
8	8.628	1230	1237	1253	rBV	615625	1069539	100.00%	18.857%
9	10.037	1462	1468	1486	rBV	646598	926637	86.64%	16.337%
10	11.061	1631	1636	1653	rBV	493597	666223	62.29%	11.746%
11	12.000	1785	1790	1803	rBV	632566	841933	78.72%	14.844%

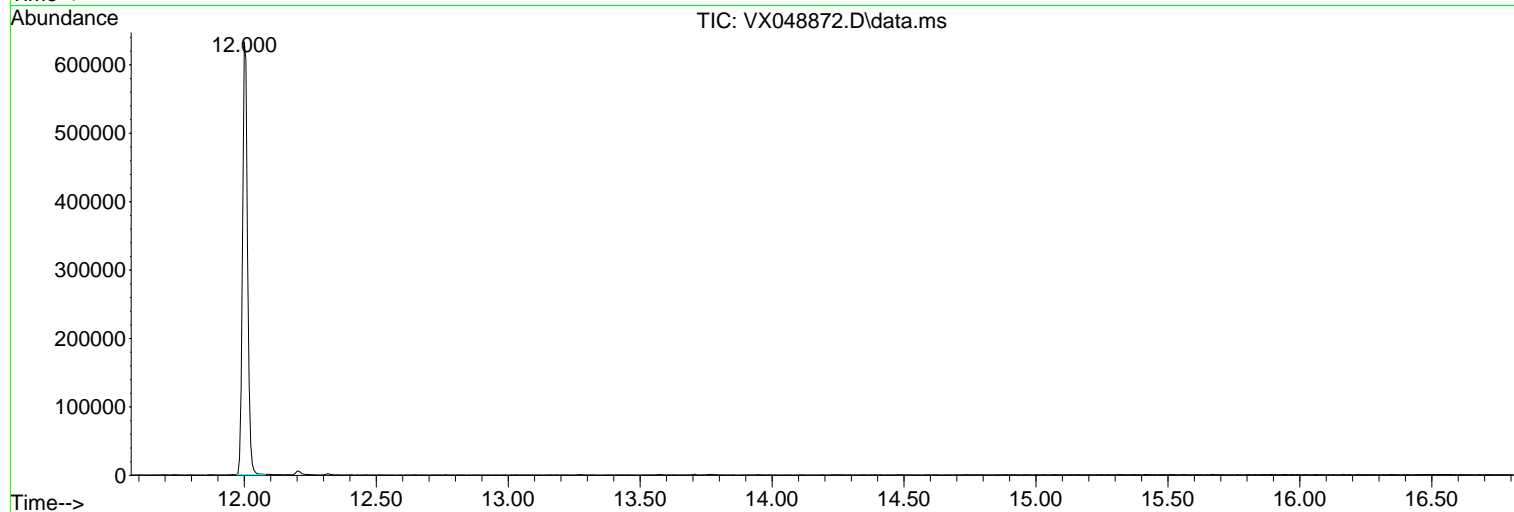
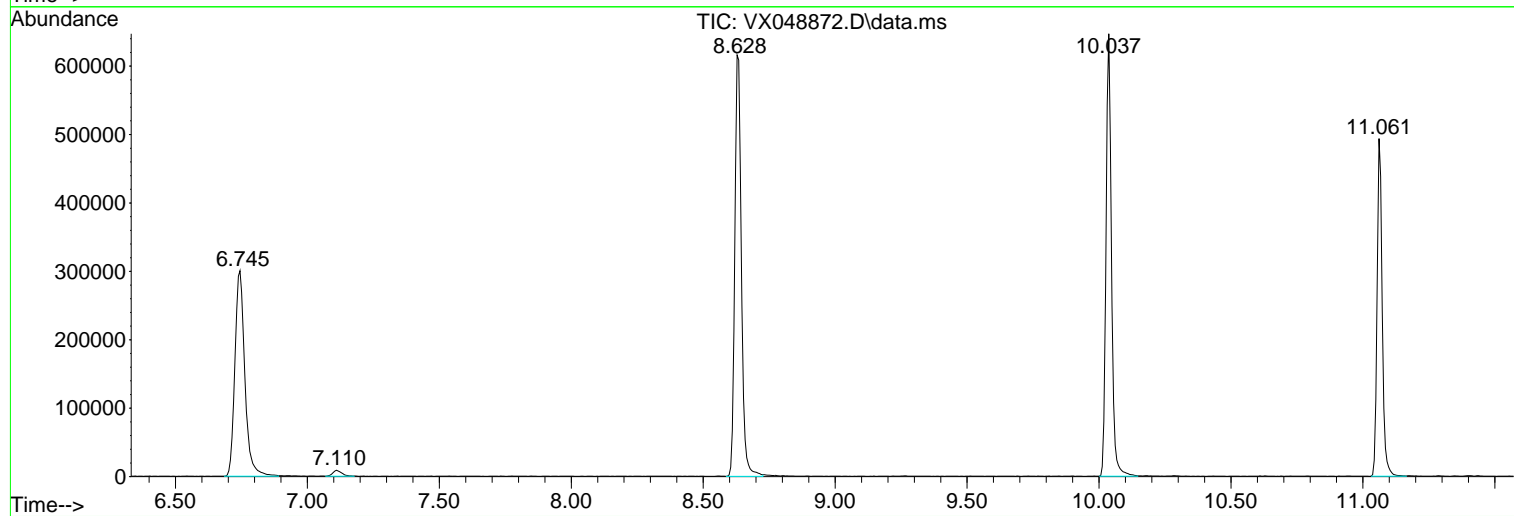
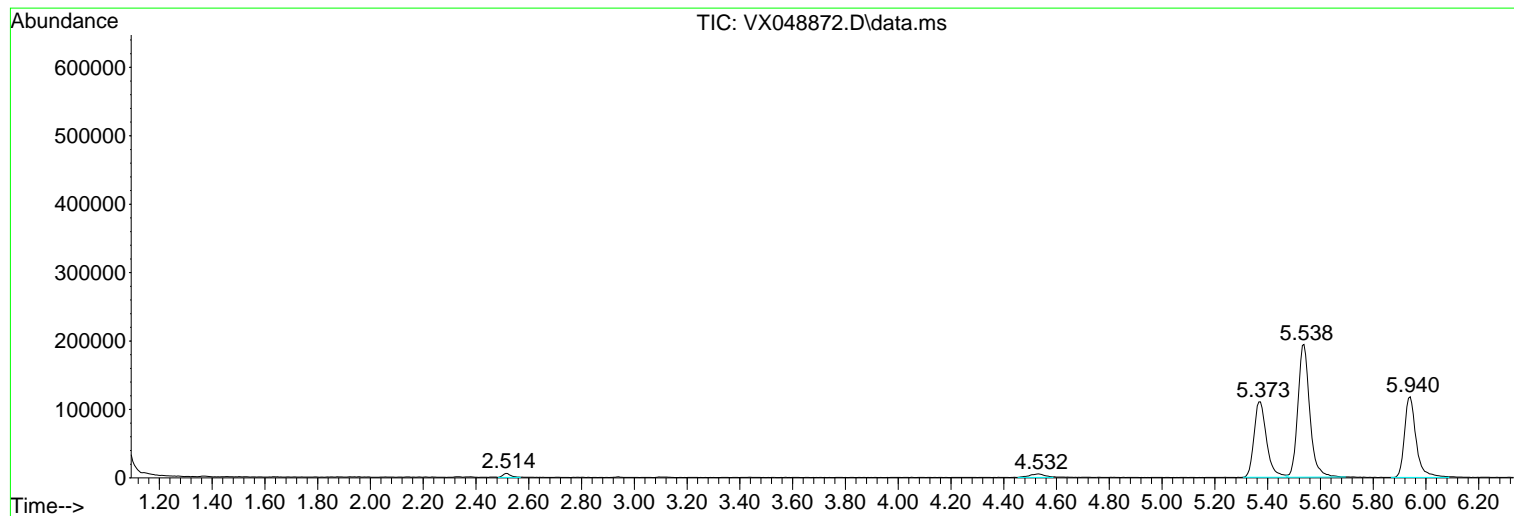
Sum of corrected areas: 5671965

Data Path : Z:\voasrv\HPCHEM1\MSVOA_X\Data\VX121525\
Data File : VX048872.D
Acq On : 15 Dec 2025 12:10
Operator : JC/MD
Sample : Q3835-02
Misc : 5.0mL/MSVOA_X/WATER
ALS Vial : 8 Sample Multiplier: 1

Instrument :
MSVOA_X
ClientSampleId :
OWBR-01-170-121025

Quant Method : Z:\voasrv\HPCHEM1\MSVOA_X\Method\82X120425W.M
Quant Title : SW846 8260

TIC Library : C:\Database\NIST20.L
TIC Integration Parameters: LSCINT.P



Library Search Compound Report

Data Path : Z:\voasrv\HPCHEM1\MSVOA_X\Data\VX121525\
Data File : VX048872.D
Acq On : 15 Dec 2025 12:10
Operator : JC/MD
Sample : Q3835-02
Misc : 5.0mL/MSVOA_X/WATER
ALS Vial : 8 Sample Multiplier: 1

Instrument :
MSVOA_X
ClientSampleId :
OWBR-01-170-121025

Quant Method : Z:\voasrv\HPCHEM1\MSVOA_X\Method\82X120425W.M
Quant Title : SW846 8260

TIC Library : C:\Database\NIST20.L
TIC Integration Parameters: LSCINT.P

No Library Search Compounds Detected

Data Path : Z:\voasrv\HPCHEM1\MSVOA_X\Data\VX121525\
Data File : VX048872.D
Acq On : 15 Dec 2025 12:10
Operator : JC/MD
Sample : Q3835-02
Misc : 5.0mL/MSVOA_X/WATER
ALS Vial : 8 Sample Multiplier: 1

Instrument :
MSVOA_X
ClientSampleId :
OWBR-01-170-121025

Quant Method : Z:\voasrv\HPCHEM1\MSVOA_X\Method\82X120425W.M
Quant Title : SW846 8260

TIC Library : C:\Database\NIST20.L
TIC Integration Parameters: LSCINT.P

TIC Top Hit name	RT	EstConc	Units	Response	--Internal Standard--		
					#	RT	Resp Conc
