

Data Path : Z:\voasrv\HPCHEM1\MSVOA_X\Data\VX121525\
 Data File : VX048874.D
 Acq On : 15 Dec 2025 12:52
 Operator : JC/MD
 Sample : Q3863-01
 Misc : 5.0mL/MSVOA_X/WATER
 ALS Vial : 10 Sample Multiplier: 1

Instrument :
 MSVOA_X
 ClientSampleId :
 MW-17B-55-121225

Integration Parameters: RTEINT.P

Integrator: RTE
 Smoothing : ON Filtering: 5
 Sampling : 1 Min Area: 3 % of largest Peak
 Start Thrs: 0.2 Max Peaks: 100
 Stop Thrs : 0 Peak Location: TOP

If leading or trailing edge < 100 prefer < Baseline drop else tangent >
 Peak separation: 5

Method : Z:\voasrv\HPCHEM1\MSVOA_X\Method\82X120425W.M
 Title : SW846 8260

Signal : TIC: VX048874.D\data.ms

peak #	R.T. min	first scan	max scan	last scan	PK TY	peak height	corr. area	corr. % max.	% of total
1	2.337	196	205	230	rBV2	684038	1549740	2.49%	1.608%
2	4.477	541	556	602	rBV	9087991	28127737	45.14%	29.194%
3	6.745	917	928	950	rBV	287685	740552	1.19%	0.769%
4	7.129	976	991	1048	rBV	23635986	62312805	100.00%	64.674%
5	8.634	1231	1238	1247	rBV	525476	874288	1.40%	0.907%
6	9.256	1333	1340	1357	rBV	822480	1252507	2.01%	1.300%
7	10.037	1462	1468	1486	rBV	557133	787084	1.26%	0.817%
8	12.000	1785	1790	1801	rBV	511808	704467	1.13%	0.731%

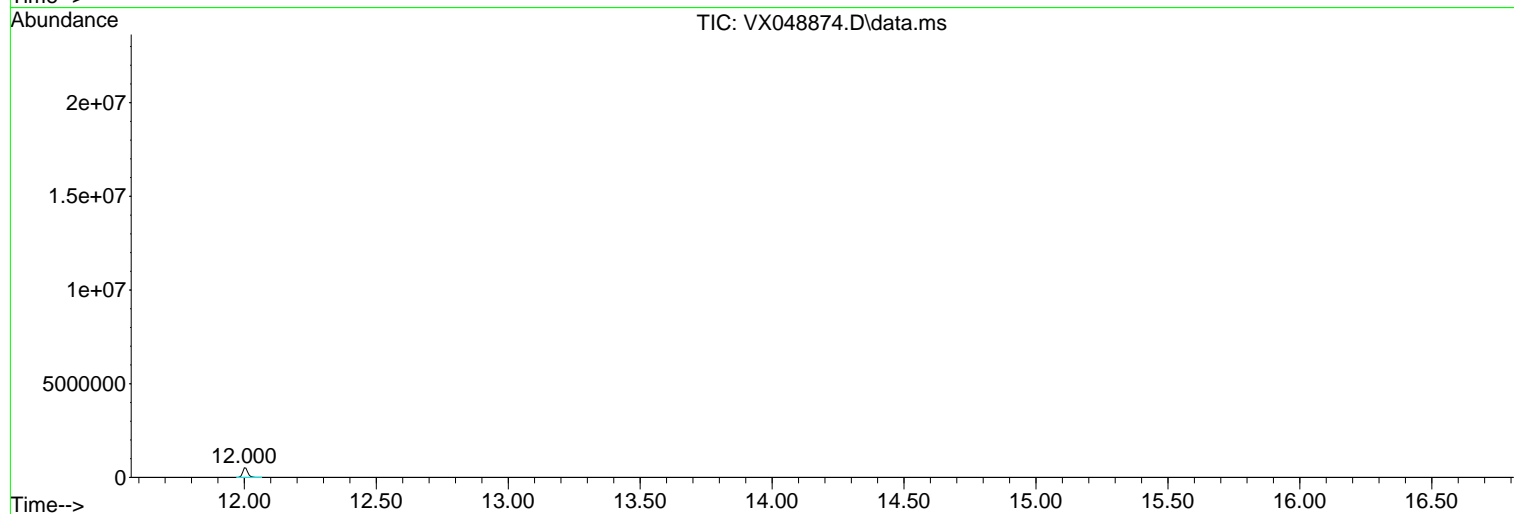
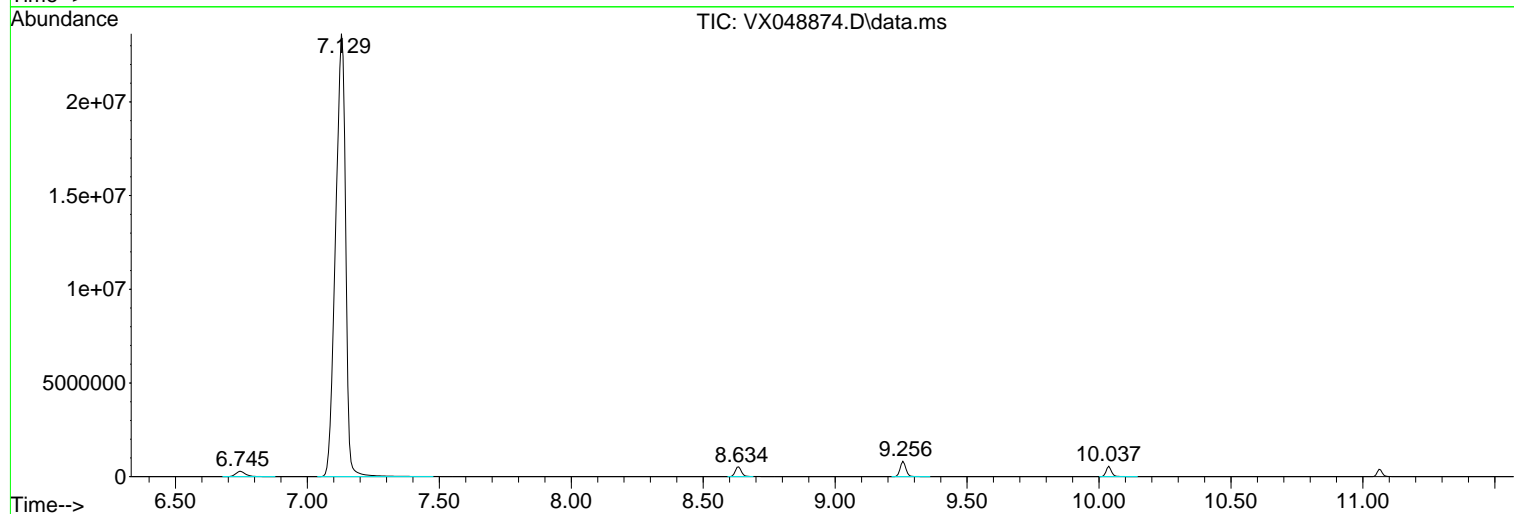
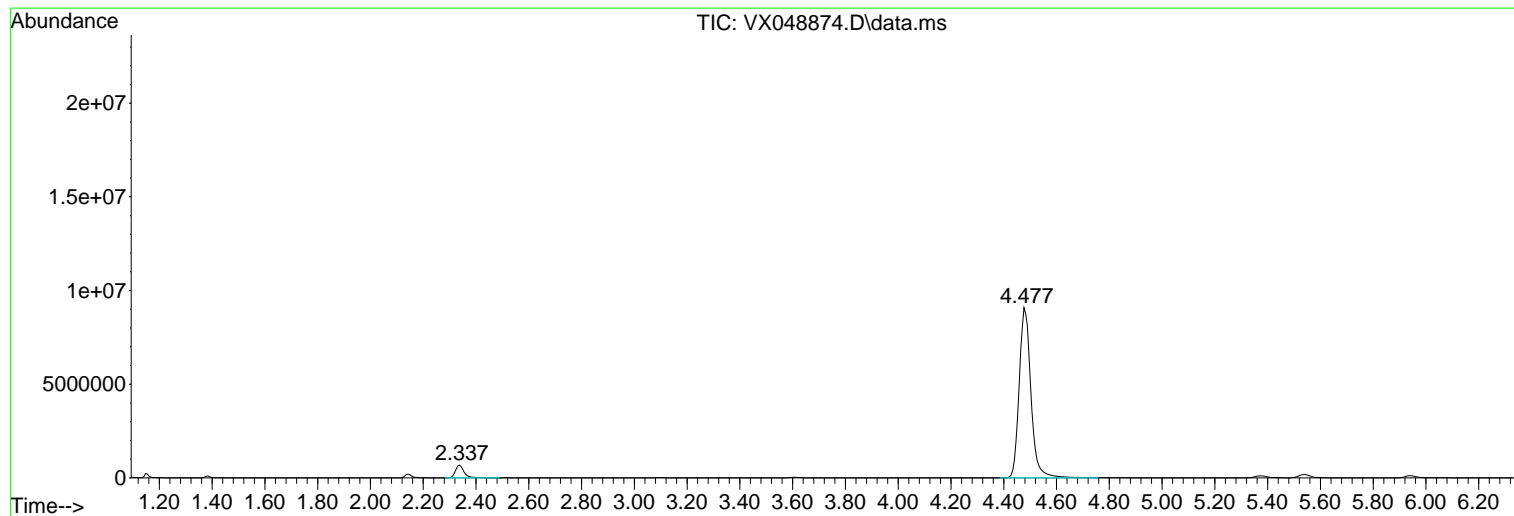
Sum of corrected areas: 96349180

Data Path : Z:\voasrv\HPCHEM1\MSVOA_X\Data\VX121525\
Data File : VX048874.D
Acq On : 15 Dec 2025 12:52
Operator : JC/MD
Sample : Q3863-01
Misc : 5.0mL/MSVOA_X/WATER
ALS Vial : 10 Sample Multiplier: 1

Instrument :
MSVOA_X
ClientSampleId :
MW-17B-55-121225

Quant Method : Z:\voasrv\HPCHEM1\MSVOA_X\Method\82X120425W.M
Quant Title : SW846 8260

TIC Library : C:\Database\NIST20.L
TIC Integration Parameters: LSCINT.P



Library Search Compound Report

Data Path : Z:\voasrv\HPCHEM1\MSVOA_X\Data\VX121525\
Data File : VX048874.D
Acq On : 15 Dec 2025 12:52
Operator : JC/MD
Sample : Q3863-01
Misc : 5.0mL/MSVOA_X/WATER
ALS Vial : 10 Sample Multiplier: 1

Instrument :
MSVOA_X
ClientSampleId :
MW-17B-55-121225

Quant Method : Z:\voasrv\HPCHEM1\MSVOA_X\Method\82X120425W.M
Quant Title : SW846 8260

TIC Library : C:\Database\NIST20.L
TIC Integration Parameters: LSCINT.P

No Library Search Compounds Detected

Data Path : Z:\voasrv\HPCHEM1\MSVOA_X\Data\VX121525\
Data File : VX048874.D
Acq On : 15 Dec 2025 12:52
Operator : JC/MD
Sample : Q3863-01
Misc : 5.0mL/MSVOA_X/WATER
ALS Vial : 10 Sample Multiplier: 1

Instrument :
MSVOA_X
ClientSampleId :
MW-17B-55-121225

Quant Method : Z:\voasrv\HPCHEM1\MSVOA_X\Method\82X120425W.M
Quant Title : SW846 8260

TIC Library : C:\Database\NIST20.L
TIC Integration Parameters: LSCINT.P

TIC Top Hit name	RT	EstConc	Units	Response	--Internal Standard--			
					#	RT	Resp	Conc
