

Data Path : Z:\voasrv\HPCHEM1\MSVOA_X\Data\VX121525\
 Data File : VX048876.D
 Acq On : 15 Dec 2025 14:20
 Operator : JC/MD
 Sample : VIBLK
 Misc : 5.0mL/MSVOA_X/WATER
 ALS Vial : 12 Sample Multiplier: 1

Instrument :
 MSVOA_X
 ClientSampleId :
 VIBLK

Integration Parameters: RTEINT.P
 Integrator: RTE
 Smoothing : ON Filtering: 5
 Sampling : 1 Min Area: 3 % of largest Peak
 Start Thrs: 0.2 Max Peaks: 100
 Stop Thrs : 0 Peak Location: TOP

If leading or trailing edge < 100 prefer < Baseline drop else tangent >
 Peak separation: 5

Method : Z:\voasrv\HPCHEM1\MSVOA_X\Method\82X120425W.M
 Title : SW846 8260

Signal : TIC: VX048876.D\data.ms

| peak # | R.T. min | first scan | max scan | last scan | PK TY | peak height | corr. area | corr. % max. | % of total |
|--------|----------|------------|----------|-----------|-------|-------------|------------|--------------|------------|
| 1 | 5.361 | 689 | 701 | 718 | rBV2 | 129890 | 431303 | 34.79% | 7.243% |
| 2 | 5.525 | 718 | 728 | 754 | rVB | 227109 | 740360 | 59.72% | 12.433% |
| 3 | 5.928 | 782 | 794 | 825 | rBV | 143327 | 434939 | 35.08% | 7.304% |
| 4 | 6.739 | 916 | 927 | 955 | rBV | 351749 | 935282 | 75.44% | 15.706% |
| 5 | 7.104 | 976 | 987 | 999 | rBV4 | 7872 | 20122 | 1.62% | 0.338% |
| 6 | 8.628 | 1230 | 1237 | 1259 | rBV | 749168 | 1239694 | 100.00% | 20.818% |
| 7 | 10.037 | 1462 | 1468 | 1489 | rBV | 645660 | 953279 | 76.90% | 16.008% |
| 8 | 11.061 | 1631 | 1636 | 1650 | rBV | 417751 | 572037 | 46.14% | 9.606% |
| 9 | 12.000 | 1785 | 1790 | 1803 | rBV | 455222 | 627844 | 50.65% | 10.543% |

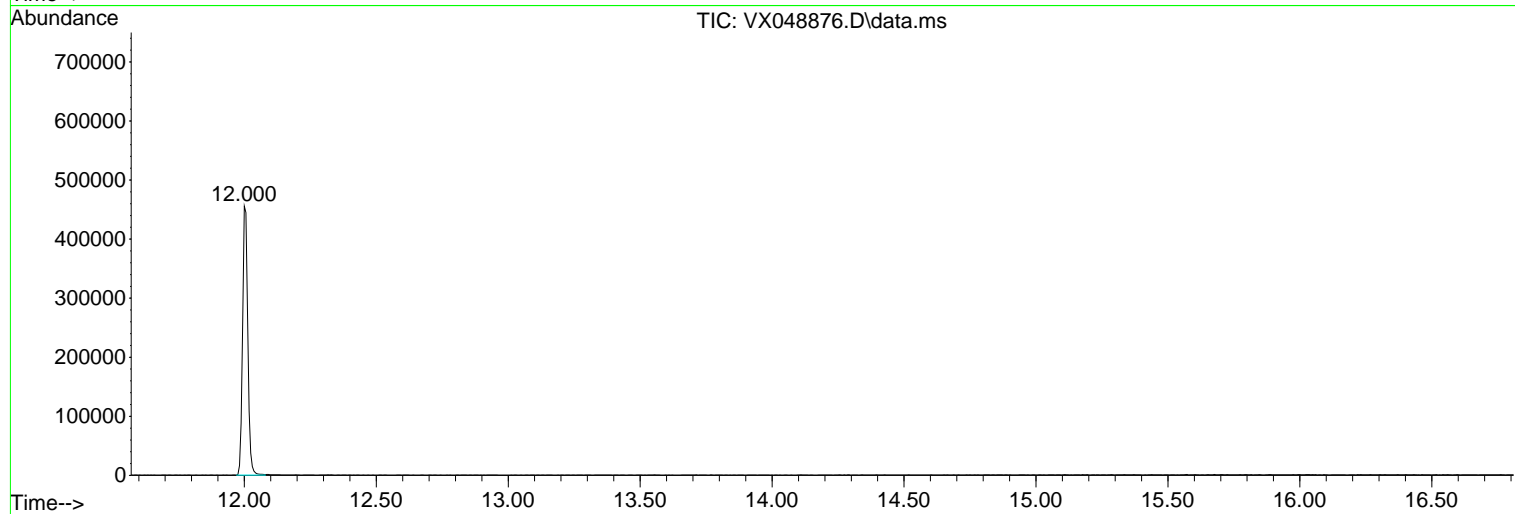
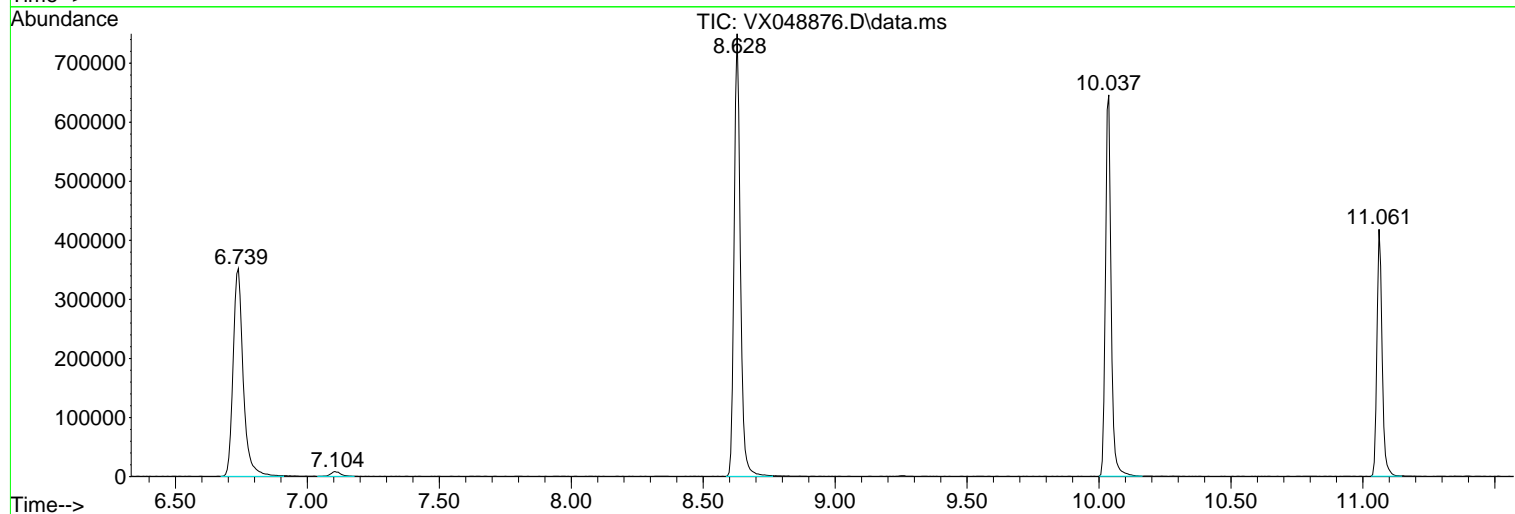
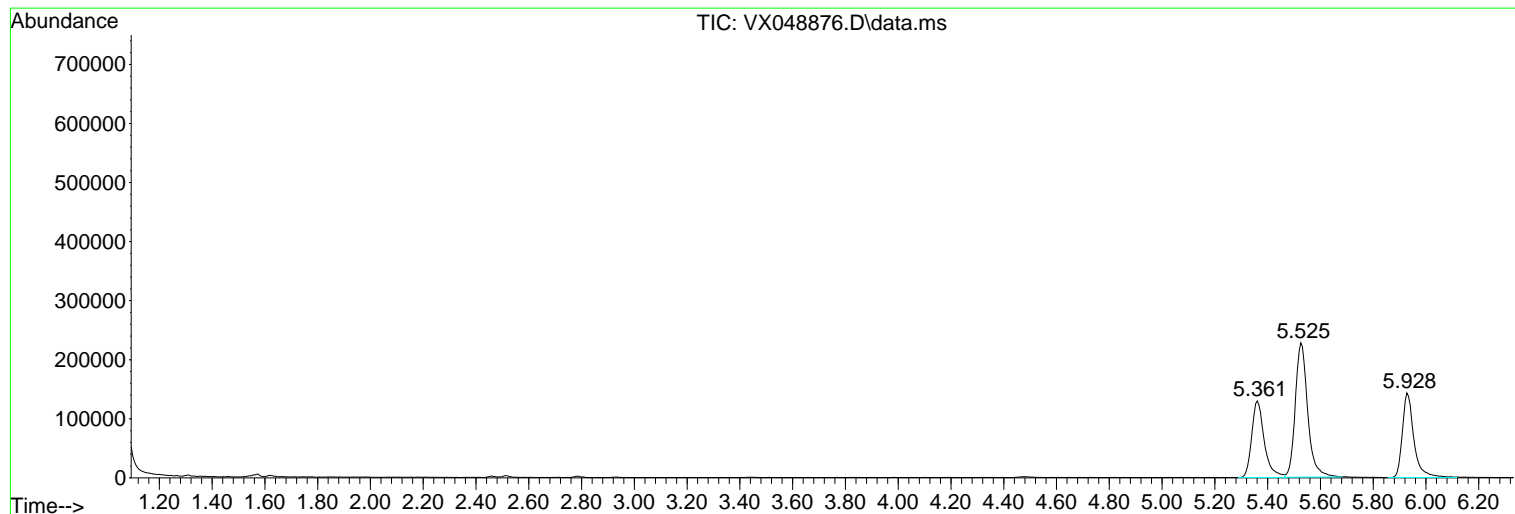
Sum of corrected areas: 5954860

Data Path : Z:\voasrv\HPCHEM1\MSVOA_X\Data\VX121525\
 Data File : VX048876.D
 Acq On : 15 Dec 2025 14:20
 Operator : JC/MD
 Sample : VIBLK
 Misc : 5.0mL/MSVOA_X/WATER
 ALS Vial : 12 Sample Multiplier: 1

Instrument :
 MSVOA_X
 ClientSampleId :
 VIBLK

Quant Method : Z:\voasrv\HPCHEM1\MSVOA_X\Method\82X120425W.M
 Quant Title : SW846 8260

TIC Library : C:\Database\NIST20.L
 TIC Integration Parameters: LSCINT.P



Library Search Compound Report

Data Path : Z:\voasrv\HPCHEM1\MSVOA_X\Data\VX121525\
Data File : VX048876.D
Acq On : 15 Dec 2025 14:20
Operator : JC/MD
Sample : VIBLK
Misc : 5.0mL/MSVOA_X/WATER
ALS Vial : 12 Sample Multiplier: 1

Instrument :
MSVOA_X
ClientSampleId :
VIBLK

Quant Method : Z:\voasrv\HPCHEM1\MSVOA_X\Method\82X120425W.M
Quant Title : SW846 8260

TIC Library : C:\Database\NIST20.L
TIC Integration Parameters: LSCINT.P

No Library Search Compounds Detected

Data Path : Z:\voasrv\HPCHEM1\MSVOA_X\Data\VX121525\
Data File : VX048876.D
Acq On : 15 Dec 2025 14:20
Operator : JC/MD
Sample : VIBLK
Misc : 5.0mL/MSVOA_X/WATER
ALS Vial : 12 Sample Multiplier: 1

Instrument :
MSVOA_X
ClientSampleId :
VIBLK

Quant Method : Z:\voasrv\HPCHEM1\MSVOA_X\Method\82X120425W.M
Quant Title : SW846 8260

TIC Library : C:\Database\NIST20.L
TIC Integration Parameters: LSCINT.P

| TIC Top Hit name | RT | EstConc | Units | Response | --Internal Standard-- | | |
|------------------|----|---------|-------|----------|-----------------------|----|-----------|
| | | | | | # | RT | Resp Conc |
